



Full wwPDB X-ray Structure Validation Report ⓘ

Feb 1, 2016 – 05:40 PM GMT

PDB ID : 4J36
Title : Cocrystal Structure of kynurenine 3-monooxygenase in complex with UPF 648 inhibitor(KMO-394UPF)
Authors : Amaral, M.; Levy, C.; Heyes, D.J.; Lafite, P.; Outeiro, T.F.; Giorgini, F.; Leys, D.; Scrutton, N.S.
Deposited on : 2013-02-05
Resolution : 2.13 Å(reported)

This is a Full wwPDB X-ray Structure Validation Report for a publicly released PDB entry.
We welcome your comments at validation@mail.wwpdb.org
A user guide is available at
<http://wwpdb.org/validation/2016/XrayValidationReportHelp>
with specific help available everywhere you see the ⓘ symbol.

The following versions of software and data (see [references ⓘ](#)) were used in the production of this report:

MolProbity : 4.02b-467
Mogul : 1.7 (RC4), CSD as536be (2015)
Xtriage (Phenix) : 1.9-1692
EDS : rb-20026688
Percentile statistics : 20151230.v01 (using entries in the PDB archive December 30th 2015)
Refmac : 5.8.0135
CCP4 : 6.5.0
Ideal geometry (proteins) : Engh & Huber (2001)
Ideal geometry (DNA, RNA) : Parkinson et al. (1996)
Validation Pipeline (wwPDB-VP) : trunk26865

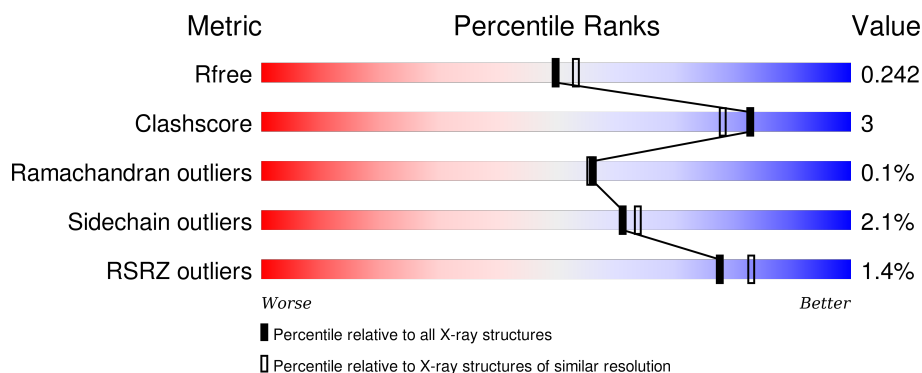
1 Overall quality at a glance

The following experimental techniques were used to determine the structure:

X-RAY DIFFRACTION

The reported resolution of this entry is 2.13 Å.

Percentile scores (ranging between 0-100) for global validation metrics of the entry are shown in the following graphic. The table shows the number of entries on which the scores are based.



Metric	Whole archive (#Entries)	Similar resolution (#Entries, resolution range(Å))
R_{free}	91344	1693 (2.16-2.12)
Clashscore	102246	1824 (2.16-2.12)
Ramachandran outliers	100387	1798 (2.16-2.12)
Sidechain outliers	100360	1798 (2.16-2.12)
RSRZ outliers	91569	1699 (2.16-2.12)

The table below summarises the geometric issues observed across the polymeric chains and their fit to the electron density. The red, orange, yellow and green segments on the lower bar indicate the fraction of residues that contain outliers for ≥ 3 , 2, 1 and 0 types of geometric quality criteria. A grey segment represents the fraction of residues that are not modelled. The numeric value for each fraction is indicated below the corresponding segment, with a dot representing fractions $\leq 5\%$. The upper red bar (where present) indicates the fraction of residues that have poor fit to the electron density. The numeric value is given above the bar.

Mol	Chain	Length	Quality of chain
1	A	415	<div> <div style="width: 100%; height: 10px; background: linear-gradient(to right, red 1%, orange 1%, yellow 1%, green 81%, grey 11%);"></div> <div style="display: flex; justify-content: space-between; width: 100%;"> % 81% 7% • 11% </div> </div>
1	B	415	<div> <div style="width: 100%; height: 10px; background: linear-gradient(to right, red 1%, orange 1%, yellow 6%, green 80%, grey 14%);"></div> <div style="display: flex; justify-content: space-between; width: 100%;"> % 80% 6% 14% </div> </div>

2 Entry composition

There are 4 unique types of molecules in this entry. The entry contains 6257 atoms, of which 0 are hydrogens and 0 are deuteriums.

In the tables below, the ZeroOcc column contains the number of atoms modelled with zero occupancy, the AltConf column contains the number of residues with at least one atom in alternate conformation and the Trace column contains the number of residues modelled with at most 2 atoms.

- Molecule 1 is a protein called Kynurenine 3-monooxygenase.

Mol	Chain	Residues	Atoms					ZeroOcc	AltConf	Trace
1	A	371	Total	C	N	O	S	0	0	0
			2956	1875	505	557	19			
1	B	356	Total	C	N	O	S	0	0	0
			2820	1789	482	529	20			

There are 42 discrepancies between the modelled and reference sequences:

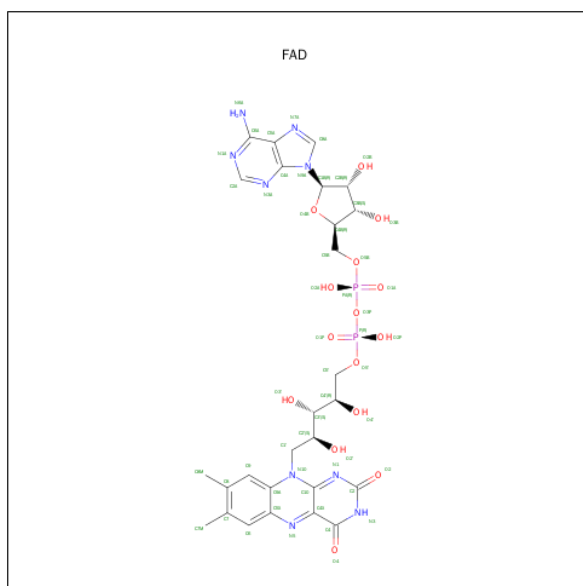
Chain	Residue	Modelled	Actual	Comment	Reference
A	-20	MET	-	EXPRESSION TAG	UNP P38169
A	-19	GLY	-	EXPRESSION TAG	UNP P38169
A	-18	SER	-	EXPRESSION TAG	UNP P38169
A	-17	SER	-	EXPRESSION TAG	UNP P38169
A	-16	HIS	-	EXPRESSION TAG	UNP P38169
A	-15	HIS	-	EXPRESSION TAG	UNP P38169
A	-14	HIS	-	EXPRESSION TAG	UNP P38169
A	-13	HIS	-	EXPRESSION TAG	UNP P38169
A	-12	HIS	-	EXPRESSION TAG	UNP P38169
A	-11	HIS	-	EXPRESSION TAG	UNP P38169
A	-10	SER	-	EXPRESSION TAG	UNP P38169
A	-9	SER	-	EXPRESSION TAG	UNP P38169
A	-8	GLY	-	EXPRESSION TAG	UNP P38169
A	-7	LEU	-	EXPRESSION TAG	UNP P38169
A	-6	VAL	-	EXPRESSION TAG	UNP P38169
A	-5	PRO	-	EXPRESSION TAG	UNP P38169
A	-4	ARG	-	EXPRESSION TAG	UNP P38169
A	-3	GLY	-	EXPRESSION TAG	UNP P38169
A	-2	SER	-	EXPRESSION TAG	UNP P38169
A	-1	HIS	-	EXPRESSION TAG	UNP P38169
A	0	MET	-	EXPRESSION TAG	UNP P38169
B	-20	MET	-	EXPRESSION TAG	UNP P38169
B	-19	GLY	-	EXPRESSION TAG	UNP P38169
B	-18	SER	-	EXPRESSION TAG	UNP P38169
B	-17	SER	-	EXPRESSION TAG	UNP P38169

Continued on next page...

Continued from previous page...

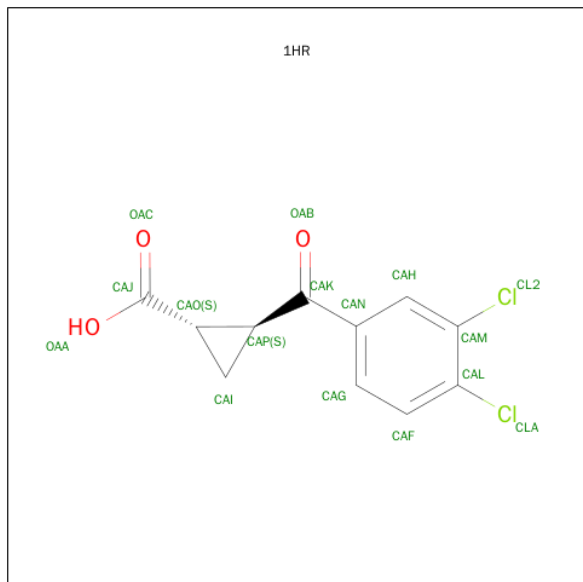
Chain	Residue	Modelled	Actual	Comment	Reference
B	-16	HIS	-	EXPRESSION TAG	UNP P38169
B	-15	HIS	-	EXPRESSION TAG	UNP P38169
B	-14	HIS	-	EXPRESSION TAG	UNP P38169
B	-13	HIS	-	EXPRESSION TAG	UNP P38169
B	-12	HIS	-	EXPRESSION TAG	UNP P38169
B	-11	HIS	-	EXPRESSION TAG	UNP P38169
B	-10	SER	-	EXPRESSION TAG	UNP P38169
B	-9	SER	-	EXPRESSION TAG	UNP P38169
B	-8	GLY	-	EXPRESSION TAG	UNP P38169
B	-7	LEU	-	EXPRESSION TAG	UNP P38169
B	-6	VAL	-	EXPRESSION TAG	UNP P38169
B	-5	PRO	-	EXPRESSION TAG	UNP P38169
B	-4	ARG	-	EXPRESSION TAG	UNP P38169
B	-3	GLY	-	EXPRESSION TAG	UNP P38169
B	-2	SER	-	EXPRESSION TAG	UNP P38169
B	-1	HIS	-	EXPRESSION TAG	UNP P38169
B	0	MET	-	EXPRESSION TAG	UNP P38169

- Molecule 2 is FLAVIN-ADENINE DINUCLEOTIDE (three-letter code: FAD) (formula: $C_{27}H_{33}N_9O_{15}P_2$).



Mol	Chain	Residues	Atoms					ZeroOcc	AltConf
2	A	1	Total	C	N	O	P	0	0
			53	27	9	15	2		
2	B	1	Total	C	N	O	P	0	0
			53	27	9	15	2		

- Molecule 3 is (1S,2S)-2-(3,4-DICHLOROBENZOYL)CYCLOPROPANECARBOXYLIC ACID (three-letter code: 1HR) (formula: C₁₁H₈Cl₂O₃).



Mol	Chain	Residues	Atoms				ZeroOcc	AltConf
3	B	1	Total	C	Cl	O	0	0
			16	11	2	3		

- Molecule 4 is water.

Mol	Chain	Residues	Atoms		ZeroOcc	AltConf
4	A	219	Total	O	0	0
			219	219		
4	B	140	Total	O	0	0
			140	140		

4 Data and refinement statistics

Property	Value	Source
Space group	P 1 21 1	Depositor
Cell constants a, b, c, α , β , γ	72.97Å 89.81Å 82.80Å 90.00° 110.60° 90.00°	Depositor
Resolution (Å)	58.68 – 2.13 58.68 – 2.13	Depositor EDS
% Data completeness (in resolution range)	99.2 (58.68-2.13) 99.2 (58.68-2.13)	Depositor EDS
R_{merge}	(Not available)	Depositor
R_{sym}	(Not available)	Depositor
$\langle I/\sigma(I) \rangle$ ¹	2.83 (at 2.12Å)	Xtriage
Refinement program	PHENIX (phenix.refine: 1.8_1069)	Depositor
R, R_{free}	0.198 , 0.239 0.207 , 0.242	Depositor DCC
R_{free} test set	2821 reflections (5.35%)	DCC
Wilson B-factor (Å ²)	39.9	Xtriage
Anisotropy	0.165	Xtriage
Bulk solvent k_{sol} (e/Å ³), B_{sol} (Å ²)	0.33 , 30.8	EDS
Estimated twinning fraction	No twinning to report.	Xtriage
L-test for twinning ²	$\langle L \rangle = 0.49$, $\langle L^2 \rangle = 0.32$	Xtriage
Outliers	0 of 55578 reflections	Xtriage
F_o, F_c correlation	0.95	EDS
Total number of atoms	6257	wwPDB-VP
Average B, all atoms (Å ²)	13.0	wwPDB-VP

Xtriage's analysis on translational NCS is as follows: *The largest off-origin peak in the Patterson function is 4.24% of the height of the origin peak. No significant pseudotranslation is detected.*

¹Intensities estimated from amplitudes.

²Theoretical values of $\langle |L| \rangle$, $\langle L^2 \rangle$ for acentric reflections are 0.5, 0.375 respectively for untwinned datasets, and 0.333, 0.2 for perfectly twinned datasets.

5 Model quality [i](#)

5.1 Standard geometry [i](#)

Bond lengths and bond angles in the following residue types are not validated in this section: 1HR, FAD

The Z score for a bond length (or angle) is the number of standard deviations the observed value is removed from the expected value. A bond length (or angle) with $|Z| > 5$ is considered an outlier worth inspection. RMSZ is the root-mean-square of all Z scores of the bond lengths (or angles).

Mol	Chain	Bond lengths		Bond angles	
		RMSZ	$\# Z > 5$	RMSZ	$\# Z > 5$
1	A	0.37	2/3015 (0.1%)	0.44	0/4063
1	B	0.24	0/2878	0.42	0/3880
All	All	0.31	2/5893 (0.0%)	0.43	0/7943

All (2) bond length outliers are listed below:

Mol	Chain	Res	Type	Atoms	Z	Observed(Å)	Ideal(Å)
1	A	302	TYR	CZ-OH	-7.04	1.25	1.37
1	A	299	CYS	CB-SG	-5.37	1.73	1.81

There are no bond angle outliers.

There are no chirality outliers.

There are no planarity outliers.

5.2 Too-close contacts [i](#)

In the following table, the Non-H and H(model) columns list the number of non-hydrogen atoms and hydrogen atoms in the chain respectively. The H(added) column lists the number of hydrogen atoms added and optimized by MolProbity. The Clashes column lists the number of clashes within the asymmetric unit, whereas Symm-Clashes lists symmetry related clashes.

Mol	Chain	Non-H	H(model)	H(added)	Clashes	Symm-Clashes
1	A	2956	0	2938	20	0
1	B	2820	0	2795	15	0
2	A	53	0	31	0	0
2	B	53	0	31	2	0
3	B	16	0	7	0	0
4	A	219	0	0	2	0
4	B	140	0	0	4	0

Continued on next page...

Continued from previous page...

Mol	Chain	Non-H	H(model)	H(added)	Clashes	Symm-Clashes
All	All	6257	0	5802	36	0

The all-atom clashscore is defined as the number of clashes found per 1000 atoms (including hydrogen atoms). The all-atom clashscore for this structure is 3.

All (36) close contacts within the same asymmetric unit are listed below, sorted by their clash magnitude.

Atom-1	Atom-2	Interatomic distance (Å)	Clash overlap (Å)
1:A:300:LYS:HE3	1:A:360:HIS:CD2	1.84	1.11
1:A:300:LYS:CE	1:A:360:HIS:CD2	2.59	0.85
1:B:44:ASN:O	4:B:556:HOH:O	2.13	0.67
1:A:300:LYS:HE2	1:A:360:HIS:CG	2.32	0.65
1:B:326:GLY:HA3	2:B:401:FAD:H1'2	1.77	0.65
1:A:3:GLU:N	4:A:702:HOH:O	2.29	0.63
1:A:300:LYS:CE	1:A:360:HIS:CG	2.82	0.62
1:A:194:ARG:NH2	1:A:293:SER:OG	2.33	0.61
1:A:202:PRO:HD3	1:A:240:SER:HB3	1.83	0.60
1:A:263:ARG:HG3	1:A:279:LEU:HD12	1.85	0.59
1:A:44:ASN:O	4:A:527:HOH:O	2.17	0.58
1:B:139:THR:HG22	1:B:141:ASP:H	1.69	0.56
1:A:200:ILE:HB	1:A:241:PHE:HB2	1.89	0.55
1:A:319:MET:HG3	1:A:367:THR:HG22	1.87	0.55
1:A:168:ASP:N	1:A:168:ASP:OD1	2.36	0.55
1:B:200:ILE:HB	1:B:241:PHE:HB2	1.90	0.53
1:B:202:PRO:HD3	1:B:240:SER:HB3	1.91	0.52
1:B:44:ASN:ND2	4:B:609:HOH:O	2.37	0.50
1:B:334:VAL:O	1:B:338:MET:HG2	2.11	0.50
1:B:155:THR:N	4:B:584:HOH:O	2.46	0.47
1:B:317:HIS:O	1:B:317:HIS:ND1	2.47	0.46
1:A:59:ILE:HD11	1:A:77:MET:HE1	1.99	0.45
1:A:194:ARG:HB2	1:A:252:ILE:HD12	1.99	0.45
1:A:325:GLN:HG2	1:A:328:ASN:HD22	1.82	0.45
1:B:20:ALA:HB2	1:B:65:ILE:HD13	1.99	0.44
1:A:334:VAL:O	1:A:338:MET:HG2	2.18	0.43
2:B:401:FAD:H1'1	2:B:401:FAD:H9	1.80	0.43
1:B:291:LYS:H	1:B:291:LYS:HD2	1.85	0.42
1:B:207:LYS:HA	1:B:208:PRO:HD2	1.89	0.42
1:A:363:LEU:HD12	1:A:363:LEU:HA	1.88	0.41
1:B:227:HIS:CE1	1:B:228:LYS:HG2	2.55	0.41
1:A:207:LYS:HA	1:A:208:PRO:HD2	1.89	0.41
1:B:320:VAL:HA	1:B:321:PRO:HD3	1.90	0.41

Continued on next page...

Continued from previous page...

Atom-1	Atom-2	Interatomic distance (Å)	Clash overlap (Å)
1:B:226:ARG:O	4:B:631:HOH:O	2.22	0.41
1:A:3:GLU:OE1	1:A:348:ARG:NH1	2.54	0.40
1:A:228:LYS:HE2	1:A:377:MET:SD	2.61	0.40

There are no symmetry-related clashes.

5.3 Torsion angles [i](#)

5.3.1 Protein backbone [i](#)

In the following table, the Percentiles column shows the percent Ramachandran outliers of the chain as a percentile score with respect to all X-ray entries followed by that with respect to entries of similar resolution.

The Analysed column shows the number of residues for which the backbone conformation was analysed, and the total number of residues.

Mol	Chain	Analysed	Favoured	Allowed	Outliers	Percentiles	
1	A	367/415 (88%)	355 (97%)	12 (3%)	0	100	100
1	B	352/415 (85%)	341 (97%)	10 (3%)	1 (0%)	46	41
All	All	719/830 (87%)	696 (97%)	22 (3%)	1 (0%)	56	56

All (1) Ramachandran outliers are listed below:

Mol	Chain	Res	Type
1	B	326	GLY

5.3.2 Protein sidechains [i](#)

In the following table, the Percentiles column shows the percent sidechain outliers of the chain as a percentile score with respect to all X-ray entries followed by that with respect to entries of similar resolution.

The Analysed column shows the number of residues for which the sidechain conformation was analysed, and the total number of residues.

Mol	Chain	Analysed	Rotameric	Outliers	Percentiles	
1	A	324/362 (90%)	316 (98%)	8 (2%)	55	56
1	B	308/362 (85%)	303 (98%)	5 (2%)	70	74

Continued on next page...

Continued from previous page...

Mol	Chain	Analysed	Rotameric	Outliers	Percentiles
All	All	632/724 (87%)	619 (98%)	13 (2%)	61 64

All (13) residues with a non-rotameric sidechain are listed below:

Mol	Chain	Res	Type
1	A	96	LEU
1	A	113	ASN
1	A	191	MET
1	A	279	LEU
1	A	299	CYS
1	A	325	GLN
1	A	363	LEU
1	A	372	ARG
1	B	44	ASN
1	B	113	ASN
1	B	122	LYS
1	B	191	MET
1	B	286	PHE

Some sidechains can be flipped to improve hydrogen bonding and reduce clashes. All (2) such sidechains are listed below:

Mol	Chain	Res	Type
1	A	46	ASN
1	A	360	HIS

5.3.3 RNA ⓘ

There are no RNA molecules in this entry.

5.4 Non-standard residues in protein, DNA, RNA chains ⓘ

There are no non-standard protein/DNA/RNA residues in this entry.

5.5 Carbohydrates ⓘ

There are no carbohydrates in this entry.

5.6 Ligand geometry

3 ligands are modelled in this entry.

In the following table, the Counts columns list the number of bonds (or angles) for which Mogul statistics could be retrieved, the number of bonds (or angles) that are observed in the model and the number of bonds (or angles) that are defined in the chemical component dictionary. The Link column lists molecule types, if any, to which the group is linked. The Z score for a bond length (or angle) is the number of standard deviations the observed value is removed from the expected value. A bond length (or angle) with $|Z| > 2$ is considered an outlier worth inspection. RMSZ is the root-mean-square of all Z scores of the bond lengths (or angles).

Mol	Type	Chain	Res	Link	Bond lengths			Bond angles		
					Counts	RMSZ	# $ Z > 2$	Counts	RMSZ	# $ Z > 2$
2	FAD	A	401	-	48,58,58	1.15	4 (8%)	54,89,89	2.01	5 (9%)
2	FAD	B	401	-	48,58,58	1.16	5 (10%)	54,89,89	2.07	6 (11%)
3	1HR	B	402	-	14,17,17	1.57	1 (7%)	19,25,25	1.00	1 (5%)

In the following table, the Chirals column lists the number of chiral outliers, the number of chiral centers analysed, the number of these observed in the model and the number defined in the chemical component dictionary. Similar counts are reported in the Torsion and Rings columns. '-' means no outliers of that kind were identified.

Mol	Type	Chain	Res	Link	Chirals	Torsions	Rings
2	FAD	A	401	-	-	0/30/50/50	0/6/6/6
2	FAD	B	401	-	-	0/30/50/50	0/6/6/6
3	1HR	B	402	-	-	0/8/17/17	0/1/2/2

All (10) bond length outliers are listed below:

Mol	Chain	Res	Type	Atoms	Z	Observed(Å)	Ideal(Å)
3	B	402	1HR	CAN-CAK	-5.53	1.40	1.49
2	B	401	FAD	C5X-N5	2.16	1.38	1.35
2	B	401	FAD	C2A-N1A	2.26	1.38	1.33
2	A	401	FAD	C2A-N1A	2.29	1.38	1.33
2	A	401	FAD	C4-N3	2.59	1.37	1.33
2	B	401	FAD	C4-N3	2.67	1.38	1.33
2	A	401	FAD	C4X-N5	3.01	1.38	1.33
2	B	401	FAD	C4X-N5	3.28	1.38	1.33
2	B	401	FAD	C2A-N3A	3.42	1.38	1.32
2	A	401	FAD	C2A-N3A	3.55	1.38	1.32

All (12) bond angle outliers are listed below:

Mol	Chain	Res	Type	Atoms	Z	Observed(°)	Ideal(°)
2	A	401	FAD	N3A-C2A-N1A	-11.87	119.81	128.89
2	B	401	FAD	N3A-C2A-N1A	-11.85	119.82	128.89
2	B	401	FAD	P-O3P-PA	-3.01	124.29	132.73
2	B	401	FAD	C4X-C4-N3	-2.84	119.71	123.59
2	A	401	FAD	C4X-C4-N3	-2.68	119.93	123.59
3	B	402	1HR	CAI-CAP-CAK	-2.51	113.00	118.67
2	A	401	FAD	C5X-C9A-N10	2.63	119.62	117.62
2	B	401	FAD	C4X-N5-C5X	2.76	119.94	116.76
2	A	401	FAD	C4X-N5-C5X	2.90	120.10	116.76
2	B	401	FAD	C5X-C9A-N10	3.01	119.91	117.62
2	A	401	FAD	C4-N3-C2	5.36	119.88	115.25
2	B	401	FAD	C4-N3-C2	5.73	120.20	115.25

There are no chirality outliers.

There are no torsion outliers.

There are no ring outliers.

1 monomer is involved in 2 short contacts:

Mol	Chain	Res	Type	Clashes	Symm-Clashes
2	B	401	FAD	2	0

5.7 Other polymers [i](#)

There are no such residues in this entry.

5.8 Polymer linkage issues [i](#)

There are no chain breaks in this entry.

6 Fit of model and data [i](#)

6.1 Protein, DNA and RNA chains [i](#)

In the following table, the column labelled ‘#RSRZ> 2’ contains the number (and percentage) of RSRZ outliers, followed by percent RSRZ outliers for the chain as percentile scores relative to all X-ray entries and entries of similar resolution. The OWAB column contains the minimum, median, 95th percentile and maximum values of the occupancy-weighted average B-factor per residue. The column labelled ‘Q< 0.9’ lists the number of (and percentage) of residues with an average occupancy less than 0.9.

Mol	Chain	Analysed	<RSRZ>	#RSRZ>2	OWAB(Å ²)	Q<0.9
1	A	371/415 (89%)	-0.11	4 (1%) 82 86	1, 10, 30, 51	0
1	B	356/415 (85%)	-0.03	6 (1%) 73 79	1, 11, 35, 49	0
All	All	727/830 (87%)	-0.07	10 (1%) 78 83	1, 10, 33, 51	0

All (10) RSRZ outliers are listed below:

Mol	Chain	Res	Type	RSRZ
1	B	99	LEU	3.8
1	B	289	TYR	3.5
1	B	155	THR	2.8
1	B	323	TYR	2.7
1	A	292	GLU	2.4
1	A	208	PRO	2.4
1	A	291	LYS	2.4
1	A	374	TYR	2.3
1	B	325	GLN	2.3
1	B	43	LYS	2.0

6.2 Non-standard residues in protein, DNA, RNA chains [i](#)

There are no non-standard protein/DNA/RNA residues in this entry.

6.3 Carbohydrates [i](#)

There are no carbohydrates in this entry.

6.4 Ligands [i](#)

In the following table, the Atoms column lists the number of modelled atoms in the group and the number defined in the chemical component dictionary. LLDF column lists the quality of electron density of the group with respect to its neighbouring residues in protein, DNA or RNA chains. The B-factors column lists the minimum, median, 95th percentile and maximum values of B factors of atoms in the group. The column labelled 'Q< 0.9' lists the number of atoms with occupancy less than 0.9.

Mol	Type	Chain	Res	Atoms	RSCC	RSR	LLDF	B-factors(\AA^2)	Q<0.9
2	FAD	A	401	53/53	0.97	0.13	0.33	0,1,3,5	0
2	FAD	B	401	53/53	0.98	0.11	-0.28	1,5,10,12	0
3	1HR	B	402	16/16	0.97	0.11	-0.52	6,13,17,31	0

6.5 Other polymers [i](#)

There are no such residues in this entry.