



# Full wwPDB X-ray Structure Validation Report ⓘ

Feb 21, 2017 – 07:05 PM EST

PDB ID : 5JFW  
Title : Crystal structure of TrkA in complex with PF-05247452  
Authors : Jayasankar, J.; Kurumbail, R.; Skerratt, S.; Brown, D.  
Deposited on : 2016-04-19  
Resolution : 1.52 Å(reported)

This is a Full wwPDB X-ray Structure Validation Report for a publicly released PDB entry.

We welcome your comments at [validation@mail.wwpdb.org](mailto:validation@mail.wwpdb.org)

A user guide is available at

<http://wwpdb.org/validation/2016/XrayValidationReportHelp>

with specific help available everywhere you see the ⓘ symbol.

---

The following versions of software and data (see [references ⓘ](#)) were used in the production of this report:

MolProbity : 4.02b-467  
Mogul : 1.7.1 (RC1), CSD as537be (2016)  
Xtriage (Phenix) : 1.9-1692  
EDS : rb-20028442  
Percentile statistics : 20151230.v01 (using entries in the PDB archive December 30th 2015)  
Refmac : 5.8.0135  
CCP4 : 6.5.0  
Ideal geometry (proteins) : Engh & Huber (2001)  
Ideal geometry (DNA, RNA) : Parkinson et al. (1996)  
Validation Pipeline (wwPDB-VP) : rb-20028442

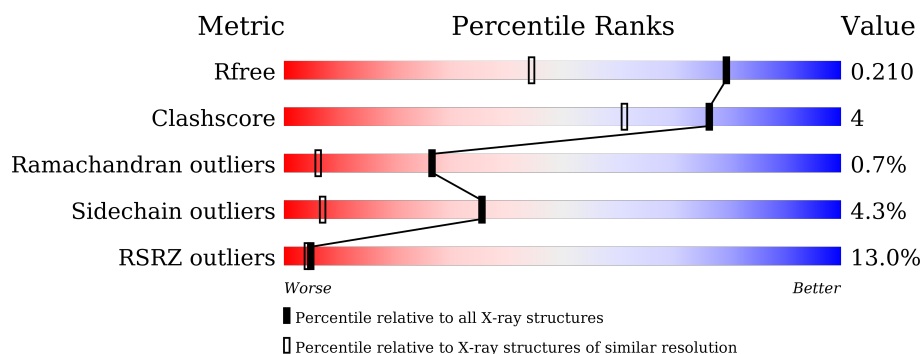
# 1 Overall quality at a glance

The following experimental techniques were used to determine the structure:

*X-RAY DIFFRACTION*

The reported resolution of this entry is 1.52 Å.

Percentile scores (ranging between 0-100) for global validation metrics of the entry are shown in the following graphic. The table shows the number of entries on which the scores are based.



Metric	Whole archive (#Entries)	Similar resolution (#Entries, resolution range(Å))
$R_{free}$	91344	2658 (1.54-1.50)
Clashscore	102246	2887 (1.54-1.50)
Ramachandran outliers	100387	2818 (1.54-1.50)
Sidechain outliers	100360	2816 (1.54-1.50)
RSRZ outliers	91569	2660 (1.54-1.50)

The table below summarises the geometric issues observed across the polymeric chains and their fit to the electron density. The red, orange, yellow and green segments on the lower bar indicate the fraction of residues that contain outliers for  $\geq 3$ , 2, 1 and 0 types of geometric quality criteria. A grey segment represents the fraction of residues that are not modelled. The numeric value for each fraction is indicated below the corresponding segment, with a dot representing fractions  $\leq 5\%$ . The upper red bar (where present) indicates the fraction of residues that have poor fit to the electron density. The numeric value is given above the bar.

Mol	Chain	Length	Quality of chain
1	A	308	<div> <div>12%</div> <div> <div></div> <div>79%</div> <div>9%</div> <div>10%</div> </div> </div>

## 2 Entry composition

There are 3 unique types of molecules in this entry. The entry contains 2706 atoms, of which 0 are hydrogens and 0 are deuteriums.

In the tables below, the ZeroOcc column contains the number of atoms modelled with zero occupancy, the AltConf column contains the number of residues with at least one atom in alternate conformation and the Trace column contains the number of residues modelled with at most 2 atoms.

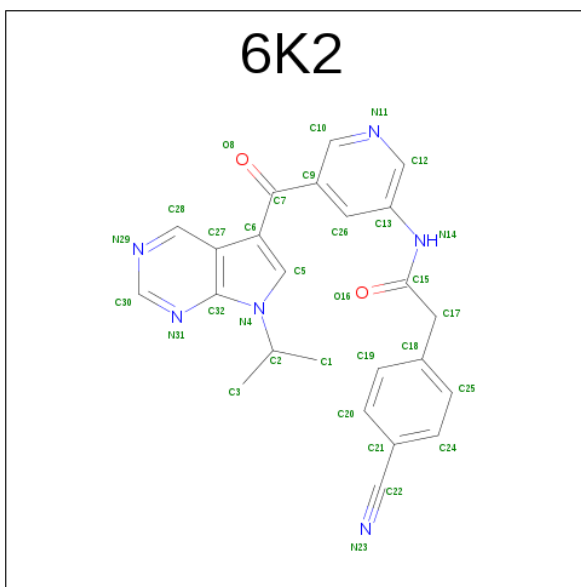
- Molecule 1 is a protein called High affinity nerve growth factor receptor.

Mol	Chain	Residues	Atoms					ZeroOcc	AltConf	Trace
			Total	C	N	O	S			
1	A	277	2245	1437	412	380	16	0	2	0

There are 13 discrepancies between the modelled and reference sequences:

Chain	Residue	Modelled	Actual	Comment	Reference
A	489	MET	-	initiating methionine	UNP P04629
A	490	HIS	-	expression tag	UNP P04629
A	491	HIS	-	expression tag	UNP P04629
A	492	HIS	-	expression tag	UNP P04629
A	493	HIS	-	expression tag	UNP P04629
A	494	HIS	-	expression tag	UNP P04629
A	495	HIS	-	expression tag	UNP P04629
A	496	LEU	-	expression tag	UNP P04629
A	497	VAL	-	expression tag	UNP P04629
A	498	PRO	-	expression tag	UNP P04629
A	499	ARG	-	expression tag	UNP P04629
A	500	GLY	-	expression tag	UNP P04629
A	501	SER	-	expression tag	UNP P04629

- Molecule 2 is 2-(4-cyanophenyl)-N-{5-[7-(propan-2-yl)-7H-pyrrolo[2,3-d]pyrimidine-5-carbonyl]pyridin-3-yl}acetamide (three-letter code: 6K2) (formula: C<sub>24</sub>H<sub>20</sub>N<sub>6</sub>O<sub>2</sub>).



Mol	Chain	Residues	Atoms				ZeroOcc	AltConf
2	A	1	Total	C	N	O	0	0
			32	24	6	2		

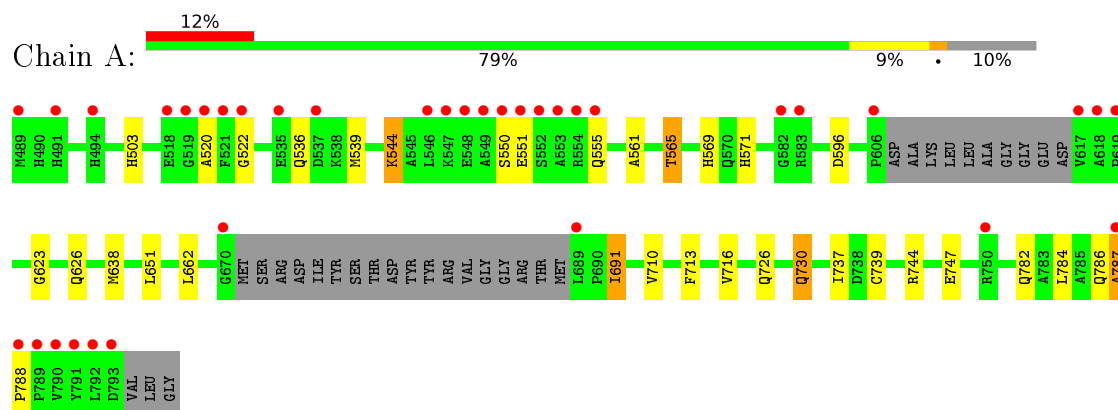
- Molecule 3 is water.

Mol	Chain	Residues	Atoms		ZeroOcc	AltConf
3	A	429	Total	O	0	0
			429	429		

### 3 Residue-property plots [i](#)

These plots are drawn for all protein, RNA and DNA chains in the entry. The first graphic for a chain summarises the proportions of errors displayed in the second graphic. The second graphic shows the sequence view annotated by issues in geometry and electron density. Residues are color-coded according to the number of geometric quality criteria for which they contain at least one outlier: green = 0, yellow = 1, orange = 2 and red = 3 or more. A red dot above a residue indicates a poor fit to the electron density ( $RSRZ > 2$ ). Stretches of 2 or more consecutive residues without any outlier are shown as a green connector. Residues present in the sample, but not in the model, are shown in grey.

- Molecule 1: High affinity nerve growth factor receptor



## 4 Data and refinement statistics

Property	Value	Source
Space group	P 64	Depositor
Cell constants a, b, c, $\alpha$ , $\beta$ , $\gamma$	124.33 Å 124.33 Å 46.19 Å 90.00° 90.00° 120.00°	Depositor
Resolution (Å)	107.67 – 1.52 107.67 – 1.52	Depositor EDS
% Data completeness (in resolution range)	81.7 (107.67-1.52) 82.3 (107.67-1.52)	Depositor EDS
$R_{merge}$	(Not available)	Depositor
$R_{sym}$	(Not available)	Depositor
$\langle I/\sigma(I) \rangle$ <sup>1</sup>	1.93 (at 1.52 Å)	Xtriage
Refinement program	BUSTER 2.9.3	Depositor
R, $R_{free}$	0.179 , 0.209 0.182 , 0.210	Depositor DCC
$R_{free}$ test set	2648 reflections (5.43%)	DCC
Wilson B-factor (Å <sup>2</sup> )	15.0	Xtriage
Anisotropy	0.190	Xtriage
Bulk solvent $k_{sol}$ (e/Å <sup>3</sup> ), $B_{sol}$ (Å <sup>2</sup> )	0.33 , 53.8	EDS
L-test for twinning <sup>2</sup>	$\langle  L  \rangle = 0.48$ , $\langle L^2 \rangle = 0.32$	Xtriage
Estimated twinning fraction	0.036 for h,-h-k,-l	Xtriage
$F_o, F_c$ correlation	0.96	EDS
Total number of atoms	2706	wwPDB-VP
Average B, all atoms (Å <sup>2</sup> )	25.0	wwPDB-VP

Xtriage's analysis on translational NCS is as follows: *The largest off-origin peak in the Patterson function is 4.57% of the height of the origin peak. No significant pseudotranslation is detected.*

<sup>1</sup>Intensities estimated from amplitudes.

<sup>2</sup>Theoretical values of  $\langle |L| \rangle$ ,  $\langle L^2 \rangle$  for acentric reflections are 0.5, 0.333 respectively for untwinned datasets, and 0.375, 0.2 for perfectly twinned datasets.

## 5 Model quality

### 5.1 Standard geometry

Bond lengths and bond angles in the following residue types are not validated in this section: 6K2

The Z score for a bond length (or angle) is the number of standard deviations the observed value is removed from the expected value. A bond length (or angle) with  $|Z| > 5$  is considered an outlier worth inspection. RMSZ is the root-mean-square of all Z scores of the bond lengths (or angles).

Mol	Chain	Bond lengths		Bond angles	
		RMSZ	$\# Z  > 5$	RMSZ	$\# Z  > 5$
1	A	0.49	0/2306	0.64	0/3121

There are no bond length outliers.

There are no bond angle outliers.

There are no chirality outliers.

There are no planarity outliers.

### 5.2 Too-close contacts

In the following table, the Non-H and H(model) columns list the number of non-hydrogen atoms and hydrogen atoms in the chain respectively. The H(added) column lists the number of hydrogen atoms added and optimized by MolProbity. The Clashes column lists the number of clashes within the asymmetric unit, whereas Symm-Clashes lists symmetry related clashes.

Mol	Chain	Non-H	H(model)	H(added)	Clashes	Symm-Clashes
1	A	2245	0	2230	17	0
2	A	32	0	0	0	0
3	A	429	0	0	1	1
All	All	2706	0	2230	17	1

The all-atom clashscore is defined as the number of clashes found per 1000 atoms (including hydrogen atoms). The all-atom clashscore for this structure is 4.

All (17) close contacts within the same asymmetric unit are listed below, sorted by their clash magnitude.

Atom-1	Atom-2	Interatomic distance (Å)	Clash overlap (Å)
1:A:730:GLN:H	1:A:730:GLN:HE21	1.16	0.94

*Continued on next page...*

Continued from previous page...

Atom-1	Atom-2	Interatomic distance (Å)	Clash overlap (Å)
1:A:550:SER:H	1:A:551:GLU:HA	1.47	0.78
1:A:782:GLN:O	1:A:786:GLN:HG2	1.94	0.67
1:A:569:HIS:CD2	1:A:571:HIS:H	2.15	0.62
1:A:569:HIS:HD2	1:A:571:HIS:H	1.52	0.58
1:A:623:GLY:H	1:A:626:GLN:HE21	1.51	0.57
1:A:651:LEU:HG	1:A:716:VAL:HG21	1.87	0.57
1:A:784:LEU:O	1:A:788:PRO:HA	2.04	0.56
1:A:561:ALA:O	1:A:565:THR:HG23	2.06	0.55
1:A:787:ALA:HB3	1:A:788:PRO:HA	1.88	0.54
1:A:691:ILE:HG12	1:A:737:ILE:HG12	1.89	0.53
1:A:739[B]:CYS:SG	1:A:744:ARG:HB2	2.52	0.50
1:A:520:ALA:O	1:A:544:LYS:NZ	2.44	0.49
1:A:536:GLN:HG3	1:A:539:MET:HB3	1.93	0.49
1:A:638[B]:MET:SD	1:A:713:PHE:HB2	2.55	0.46
1:A:503:HIS:HE1	3:A:4288:HOH:O	2.01	0.43
1:A:638[B]:MET:SD	1:A:651:LEU:HD22	2.60	0.42

All (1) symmetry-related close contacts are listed below. The label for Atom-2 includes the symmetry operator and encoded unit-cell translations to be applied.

Atom-1	Atom-2	Interatomic distance (Å)	Clash overlap (Å)
3:A:4285:HOH:O	3:A:4285:HOH:O[4_445]	0.62	1.58

## 5.3 Torsion angles ⓘ

### 5.3.1 Protein backbone ⓘ

In the following table, the Percentiles column shows the percent Ramachandran outliers of the chain as a percentile score with respect to all X-ray entries followed by that with respect to entries of similar resolution.

The Analysed column shows the number of residues for which the backbone conformation was analysed, and the total number of residues.

Mol	Chain	Analysed	Favoured	Allowed	Outliers	Percentiles
1	A	273/308 (89%)	263 (96%)	8 (3%)	2 (1%)	26 6

All (2) Ramachandran outliers are listed below:



Mol	Chain	Res	Type
1	A	522	GLY
1	A	787	ALA

### 5.3.2 Protein sidechains ⓘ

In the following table, the Percentiles column shows the percent sidechain outliers of the chain as a percentile score with respect to all X-ray entries followed by that with respect to entries of similar resolution.

The Analysed column shows the number of residues for which the sidechain conformation was analysed, and the total number of residues.

Mol	Chain	Analysed	Rotameric	Outliers	Percentiles
1	A	237/259 (92%)	227 (96%)	10 (4%)	36 7

All (10) residues with a non-rotameric sidechain are listed below:

Mol	Chain	Res	Type
1	A	544	LYS
1	A	555	GLN
1	A	565	THR
1	A	596	ASP
1	A	662	LEU
1	A	691	ILE
1	A	710	VAL
1	A	726	GLN
1	A	730	GLN
1	A	747	GLU

Some sidechains can be flipped to improve hydrogen bonding and reduce clashes. All (8) such sidechains are listed below:

Mol	Chain	Res	Type
1	A	490	HIS
1	A	503	HIS
1	A	558	GLN
1	A	568	GLN
1	A	569	HIS
1	A	626	GLN
1	A	730	GLN
1	A	769	GLN

### 5.3.3 RNA ⓘ

There are no RNA molecules in this entry.

## 5.4 Non-standard residues in protein, DNA, RNA chains ⓘ

There are no non-standard protein/DNA/RNA residues in this entry.

## 5.5 Carbohydrates ⓘ

There are no carbohydrates in this entry.

## 5.6 Ligand geometry ⓘ

1 ligand is modelled in this entry.

In the following table, the Counts columns list the number of bonds (or angles) for which Mogul statistics could be retrieved, the number of bonds (or angles) that are observed in the model and the number of bonds (or angles) that are defined in the chemical component dictionary. The Link column lists molecule types, if any, to which the group is linked. The Z score for a bond length (or angle) is the number of standard deviations the observed value is removed from the expected value. A bond length (or angle) with  $|Z| > 2$  is considered an outlier worth inspection. RMSZ is the root-mean-square of all Z scores of the bond lengths (or angles).

Mol	Type	Chain	Res	Link	Bond lengths			Bond angles		
					Counts	RMSZ	# $ Z  > 2$	Counts	RMSZ	# $ Z  > 2$
2	6K2	A	4000	-	33,35,35	1.66	5 (15%)	37,49,49	2.72	10 (27%)

In the following table, the Chirals column lists the number of chiral outliers, the number of chiral centers analysed, the number of these observed in the model and the number defined in the chemical component dictionary. Similar counts are reported in the Torsion and Rings columns. '-' means no outliers of that kind were identified.

Mol	Type	Chain	Res	Link	Chirals	Torsions	Rings
2	6K2	A	4000	-	-	0/18/22/22	0/4/4/4

All (5) bond length outliers are listed below:

Mol	Chain	Res	Type	Atoms	Z	Observed(Å)	Ideal(Å)
2	A	4000	6K2	C5-N4	-2.05	1.35	1.38
2	A	4000	6K2	C20-C21	2.10	1.43	1.39
2	A	4000	6K2	O16-C15	2.26	1.28	1.23
2	A	4000	6K2	C10-C9	2.98	1.43	1.39

*Continued on next page...*

*Continued from previous page...*

Mol	Chain	Res	Type	Atoms	Z	Observed(Å)	Ideal(Å)
2	A	4000	6K2	C6-C27	5.78	1.47	1.42

All (10) bond angle outliers are listed below:

Mol	Chain	Res	Type	Atoms	Z	Observed(°)	Ideal(°)
2	A	4000	6K2	C2-N4-C32	-9.52	118.44	127.05
2	A	4000	6K2	N29-C30-N31	-3.89	122.55	127.66
2	A	4000	6K2	C13-N14-C15	-2.71	122.30	127.49
2	A	4000	6K2	C25-C18-C19	2.28	121.91	118.15
2	A	4000	6K2	C12-N11-C10	2.65	121.50	117.51
2	A	4000	6K2	C3-C2-N4	3.18	115.61	110.15
2	A	4000	6K2	C28-N29-C30	3.21	120.62	115.99
2	A	4000	6K2	C26-C13-C12	5.11	120.96	117.94
2	A	4000	6K2	C5-N4-C2	5.54	129.78	125.45
2	A	4000	6K2	C6-C7-C9	5.87	123.58	119.54

There are no chirality outliers.

There are no torsion outliers.

There are no ring outliers.

No monomer is involved in short contacts.

## 5.7 Other polymers [i](#)

There are no such residues in this entry.

## 5.8 Polymer linkage issues [i](#)

There are no chain breaks in this entry.

## 6 Fit of model and data ⓘ

### 6.1 Protein, DNA and RNA chains ⓘ

In the following table, the column labelled ‘#RSRZ> 2’ contains the number (and percentage) of RSRZ outliers, followed by percent RSRZ outliers for the chain as percentile scores relative to all X-ray entries and entries of similar resolution. The OWAB column contains the minimum, median, 95<sup>th</sup> percentile and maximum values of the occupancy-weighted average B-factor per residue. The column labelled ‘Q< 0.9’ lists the number of (and percentage) of residues with an average occupancy less than 0.9.

Mol	Chain	Analysed	<RSRZ>	#RSRZ>2	OWAB(Å <sup>2</sup> )	Q<0.9
1	A	277/308 (89%)	0.66	36 (12%) 5 4	9, 17, 63, 88	0

All (36) RSRZ outliers are listed below:

Mol	Chain	Res	Type	RSRZ
1	A	617	VAL	19.5
1	A	521	PHE	16.6
1	A	549	ALA	13.8
1	A	520	ALA	8.5
1	A	619	PRO	7.4
1	A	550	SER	7.3
1	A	553	ALA	6.7
1	A	618	ALA	6.6
1	A	537	ASP	6.4
1	A	788	PRO	6.1
1	A	689	LEU	5.6
1	A	792	LEU	5.5
1	A	552	SER	5.0
1	A	789	PRO	5.0
1	A	535	GLU	4.9
1	A	606	PRO	4.9
1	A	551	GLU	4.8
1	A	787	ALA	4.6
1	A	670	GLY	4.5
1	A	519	GLY	4.3
1	A	548	GLU	4.3
1	A	489	MET	3.8
1	A	522	GLY	3.5
1	A	547	LYS	3.5
1	A	790	VAL	3.2
1	A	494	HIS	3.1
1	A	491	HIS	3.0

*Continued on next page...*

*Continued from previous page...*

Mol	Chain	Res	Type	RSRZ
1	A	582	GLY	2.8
1	A	791	TYR	2.7
1	A	555	GLN	2.4
1	A	793	ASP	2.3
1	A	518	GLU	2.2
1	A	583	ARG	2.2
1	A	546	LEU	2.1
1	A	554	ARG	2.1
1	A	750	ARG	2.0

## 6.2 Non-standard residues in protein, DNA, RNA chains [i](#)

There are no non-standard protein/DNA/RNA residues in this entry.

## 6.3 Carbohydrates [i](#)

There are no carbohydrates in this entry.

## 6.4 Ligands [i](#)

In the following table, the Atoms column lists the number of modelled atoms in the group and the number defined in the chemical component dictionary. LLDF column lists the quality of electron density of the group with respect to its neighbouring residues in protein, DNA or RNA chains. The B-factors column lists the minimum, median, 95<sup>th</sup> percentile and maximum values of B factors of atoms in the group. The column labelled 'Q < 0.9' lists the number of atoms with occupancy less than 0.9.

Mol	Type	Chain	Res	Atoms	RSCC	RSR	LLDF	B-factors(Å <sup>2</sup> )	Q<0.9
2	6K2	A	4000	32/32	0.97	0.08	-0.16	8,11,17,20	0

## 6.5 Other polymers [i](#)

There are no such residues in this entry.