



Full wwPDB X-ray Structure Validation Report ⓘ

Jan 31, 2016 – 08:17 PM GMT

PDB ID : 1JKJ
Title : E. coli SCS
Authors : Fraser, M.E.
Deposited on : 2001-07-12
Resolution : 2.35 Å(reported)

This is a Full wwPDB X-ray Structure Validation Report for a publicly released PDB entry.
We welcome your comments at validation@mail.wwpdb.org
A user guide is available at
<http://wwpdb.org/validation/2016/XrayValidationReportHelp>
with specific help available everywhere you see the ⓘ symbol.

The following versions of software and data (see [references ⓘ](#)) were used in the production of this report:

MolProbity : 4.02b-467
Mogul : 1.7 (RC4), CSD as536be (2015)
Xtriage (Phenix) : 1.9-1692
EDS : rb-20026688
Percentile statistics : 20151230.v01 (using entries in the PDB archive December 30th 2015)
Refmac : 5.8.0135
CCP4 : 6.5.0
Ideal geometry (proteins) : Engh & Huber (2001)
Ideal geometry (DNA, RNA) : Parkinson et al. (1996)
Validation Pipeline (wwPDB-VP) : trunk26865

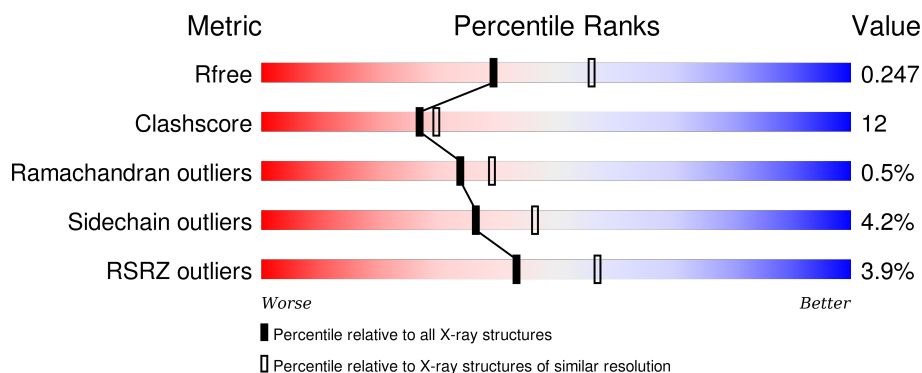
1 Overall quality at a glance

The following experimental techniques were used to determine the structure:

X-RAY DIFFRACTION

The reported resolution of this entry is 2.35 Å.

Percentile scores (ranging between 0-100) for global validation metrics of the entry are shown in the following graphic. The table shows the number of entries on which the scores are based.



Metric	Whole archive (#Entries)	Similar resolution (#Entries, resolution range(Å))
R_{free}	91344	1352 (2.38-2.34)
Clashscore	102246	1456 (2.38-2.34)
Ramachandran outliers	100387	1435 (2.38-2.34)
Sidechain outliers	100360	1436 (2.38-2.34)
RSRZ outliers	91569	1358 (2.38-2.34)

The table below summarises the geometric issues observed across the polymeric chains and their fit to the electron density. The red, orange, yellow and green segments on the lower bar indicate the fraction of residues that contain outliers for ≥ 3 , 2, 1 and 0 types of geometric quality criteria. A grey segment represents the fraction of residues that are not modelled. The numeric value for each fraction is indicated below the corresponding segment, with a dot representing fractions $\leq 5\%$. The upper red bar (where present) indicates the fraction of residues that have poor fit to the electron density. The numeric value is given above the bar.

Mol	Chain	Length	Quality of chain
1	A	288	<div> <div>0%</div> <div> <div></div> <div>79%</div> <div>18%</div> <div>.</div> </div> </div>
1	D	288	<div> <div>2%</div> <div> <div></div> <div>76%</div> <div>22%</div> <div>.</div> </div> </div>
2	B	388	<div> <div>4%</div> <div> <div></div> <div>74%</div> <div>23%</div> <div>.</div> </div> </div>
2	E	388	<div> <div>8%</div> <div> <div></div> <div>76%</div> <div>21%</div> <div>..</div> </div> </div>

The following table lists non-polymeric compounds, carbohydrate monomers and non-standard

residues in protein, DNA, RNA chains that are outliers for geometric or electron-density-fit criteria:

Mol	Type	Chain	Res	Chirality	Geometry	Clashes	Electron density
6	GOL	A	1700	-	-	-	X

2 Entry composition [i](#)

There are 7 unique types of molecules in this entry. The entry contains 10691 atoms, of which 0 are hydrogens and 0 are deuteriums.

In the tables below, the ZeroOcc column contains the number of atoms modelled with zero occupancy, the AltConf column contains the number of residues with at least one atom in alternate conformation and the Trace column contains the number of residues modelled with at most 2 atoms.

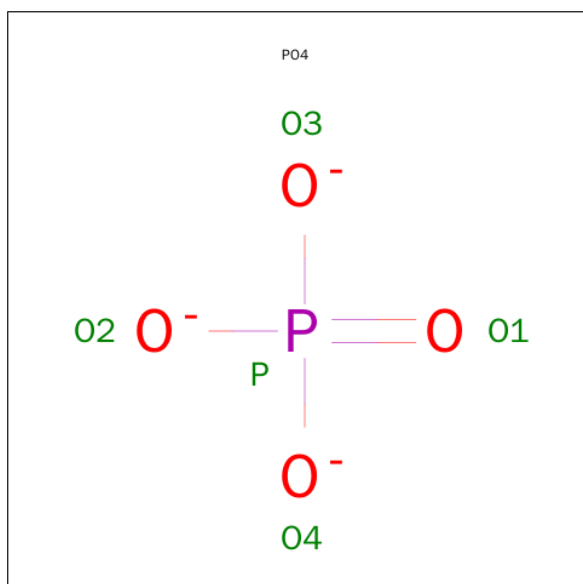
- Molecule 1 is a protein called succinyl-CoA synthetase alpha subunit.

Mol	Chain	Residues	Atoms					ZeroOcc	AltConf	Trace
1	A	287	Total	C	N	O	S	0	0	0
			2069	1313	346	399	11			
1	D	287	Total	C	N	O	S	0	0	0
			2069	1313	346	399	11			

- Molecule 2 is a protein called succinyl-CoA synthetase beta subunit.

Mol	Chain	Residues	Atoms					ZeroOcc	AltConf	Trace
2	B	388	Total	C	N	O	S	0	0	0
			2908	1836	509	550	13			
2	E	385	Total	C	N	O	S	0	0	0
			2885	1823	505	544	13			

- Molecule 3 is PHOSPHATE ION (three-letter code: PO4) (formula: O₄P).



Mol	Chain	Residues	Atoms			ZeroOcc	AltConf
3	A	1	Total	O	P	0	0
			5	4	1		
3	D	1	Total	O	P	0	0
			5	4	1		

- Molecule 4 is SULFATE ION (three-letter code: SO4) (formula: O₄S).



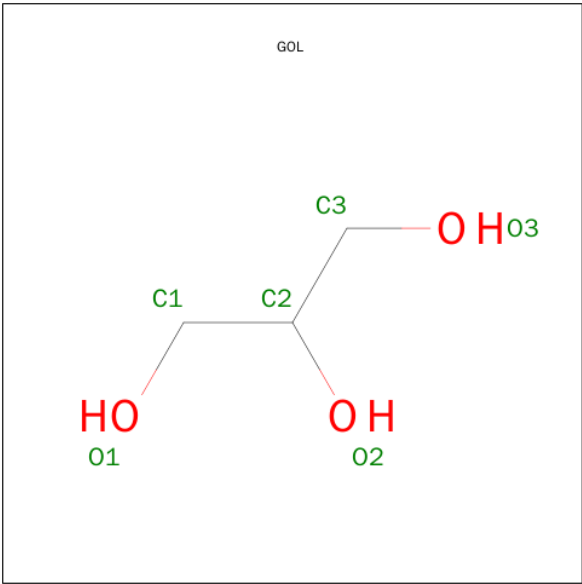
Mol	Chain	Residues	Atoms			ZeroOcc	AltConf
4	B	1	Total	O	S	0	0
			5	4	1		
4	B	1	Total	O	S	0	0
			5	4	1		
4	E	1	Total	O	S	0	0
			5	4	1		
4	E	1	Total	O	S	0	0
			5	4	1		

- Molecule 5 is COENZYME A (three-letter code: COA) (formula: C₂₁H₃₆N₇O₁₆P₃S).



Mol	Chain	Residues	Atoms						ZeroOcc	AltConf
5	A	1	Total	C	N	O	P	S	0	0
			48	21	7	16	3	1		
5	D	1	Total	C	N	O	P	S	0	0
			48	21	7	16	3	1		
5	B	1	Total	C	N	O	S	0	0	
			27	16	7	3	1			
5	E	1	Total	C	N	O	S	0	0	
			8	5	1	1	1			

- Molecule 6 is GLYCEROL (three-letter code: GOL) (formula: C₃H₈O₃).



Mol	Chain	Residues	Atoms			ZeroOcc	AltConf
6	A	1	Total	C	O	0	0
			6	3	3		

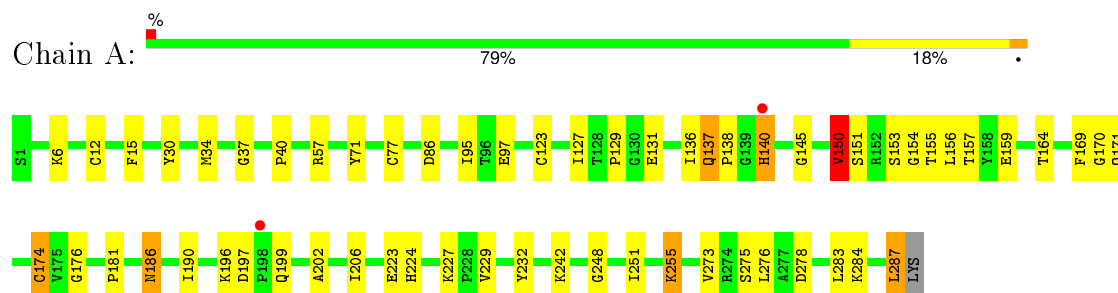
- Molecule 7 is water.

Mol	Chain	Residues	Atoms		ZeroOcc	AltConf
7	A	146	Total	O	0	0
			146	146		
7	B	191	Total	O	0	0
			191	191		
7	D	96	Total	O	0	0
			96	96		
7	E	160	Total	O	0	0
			160	160		

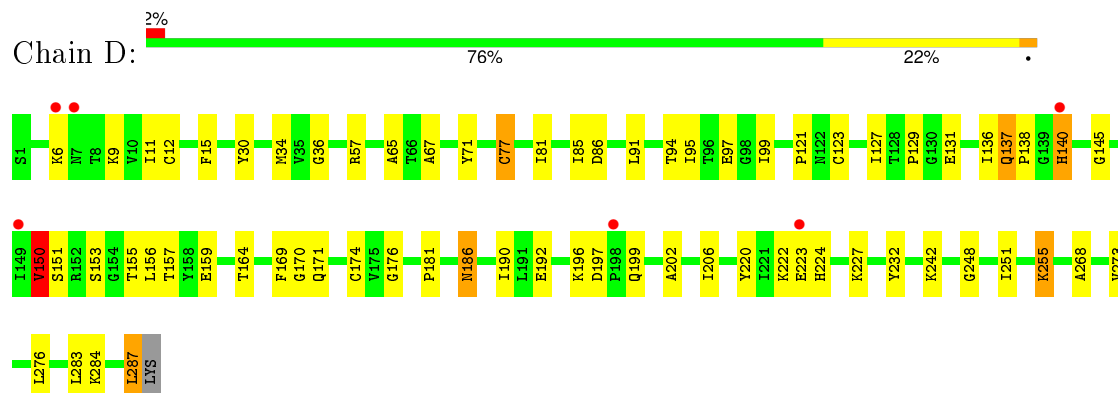
3 Residue-property plots

These plots are drawn for all protein, RNA and DNA chains in the entry. The first graphic for a chain summarises the proportions of errors displayed in the second graphic. The second graphic shows the sequence view annotated by issues in geometry and electron density. Residues are color-coded according to the number of geometric quality criteria for which they contain at least one outlier: green = 0, yellow = 1, orange = 2 and red = 3 or more. A red dot above a residue indicates a poor fit to the electron density ($RSRZ > 2$). Stretches of 2 or more consecutive residues without any outlier are shown as a green connector. Residues present in the sample, but not in the model, are shown in grey.

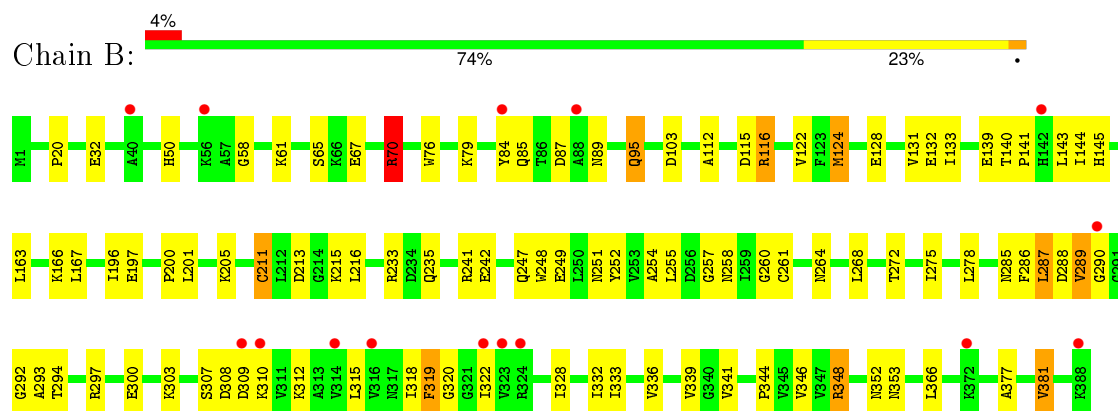
- Molecule 1: succinyl-CoA synthetase alpha subunit



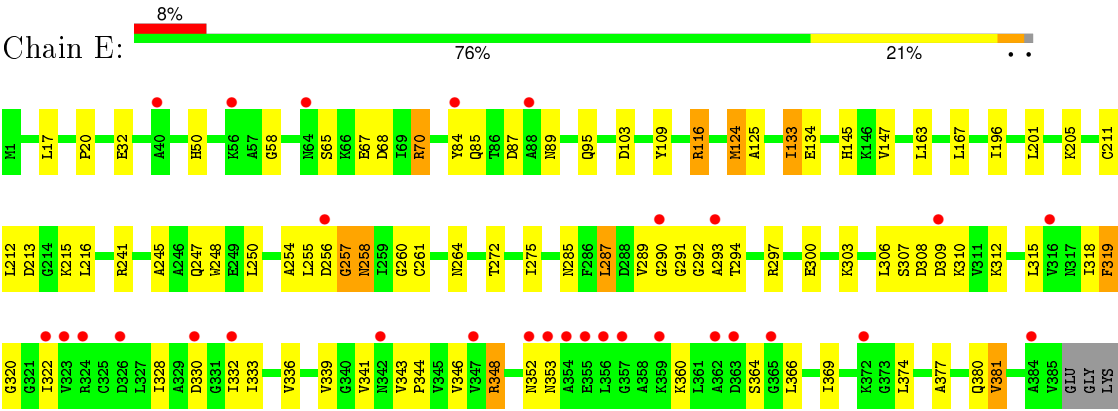
- Molecule 1: succinyl-CoA synthetase alpha subunit



- Molecule 2: succinyl-CoA synthetase beta subunit



- Molecule 2: succinyl-CoA synthetase beta subunit



4 Data and refinement statistics

Property	Value	Source
Space group	P 43 2 2	Depositor
Cell constants a, b, c, α , β , γ	96.63 Å 96.63 Å 386.80 Å 90.00° 90.00° 90.00°	Depositor
Resolution (Å)	19.64 – 2.35 19.63 – 2.36	Depositor EDS
% Data completeness (in resolution range)	87.7 (19.64-2.35) 88.5 (19.63-2.36)	Depositor EDS
R_{merge}	0.05	Depositor
R_{sym}	(Not available)	Depositor
$\langle I/\sigma(I) \rangle$ ¹	2.89 (at 2.35 Å)	Xtriage
Refinement program	CNS 1.0	Depositor
R, R_{free}	0.192 , 0.238 0.207 , 0.247	Depositor DCC
R_{free} test set	1063 reflections (1.56%)	DCC
Wilson B-factor (Å ²)	30.5	Xtriage
Anisotropy	0.066	Xtriage
Bulk solvent k_{sol} (e/Å ³), B_{sol} (Å ²)	0.34 , 39.2	EDS
Estimated twinning fraction	No twinning to report.	Xtriage
L-test for twinning ²	$\langle L \rangle = 0.48$, $\langle L^2 \rangle = 0.32$	Xtriage
Outliers	0 of 68151 reflections	Xtriage
F_o, F_c correlation	0.94	EDS
Total number of atoms	10691	wwPDB-VP
Average B, all atoms (Å ²)	35.0	wwPDB-VP

Xtriage's analysis on translational NCS is as follows: *The largest off-origin peak in the Patterson function is 1.90% of the height of the origin peak. No significant pseudotranslation is detected.*

¹Intensities estimated from amplitudes.

²Theoretical values of $\langle |L| \rangle$, $\langle L^2 \rangle$ for acentric reflections are 0.5, 0.375 respectively for untwinned datasets, and 0.333, 0.2 for perfectly twinned datasets.

5 Model quality [i](#)

5.1 Standard geometry [i](#)

Bond lengths and bond angles in the following residue types are not validated in this section: COA, GOL, PO4, SO4

The Z score for a bond length (or angle) is the number of standard deviations the observed value is removed from the expected value. A bond length (or angle) with $|Z| > 5$ is considered an outlier worth inspection. RMSZ is the root-mean-square of all Z scores of the bond lengths (or angles).

Mol	Chain	Bond lengths		Bond angles	
		RMSZ	# $ Z > 5$	RMSZ	# $ Z > 5$
1	A	0.81	2/2103 (0.1%)	0.84	1/2849 (0.0%)
1	D	0.76	1/2103 (0.0%)	0.82	1/2849 (0.0%)
2	B	0.80	1/2950 (0.0%)	0.87	5/3989 (0.1%)
2	E	0.73	0/2927	0.85	3/3961 (0.1%)
All	All	0.77	4/10083 (0.0%)	0.85	10/13648 (0.1%)

Chiral center outliers are detected by calculating the chiral volume of a chiral center and verifying if the center is modelled as a planar moiety or with the opposite hand. A planarity outlier is detected by checking planarity of atoms in a peptide group, atoms in a mainchain group or atoms of a sidechain that are expected to be planar.

Mol	Chain	#Chirality outliers	#Planarity outliers
1	A	0	1
1	D	0	1
All	All	0	2

All (4) bond length outliers are listed below:

Mol	Chain	Res	Type	Atoms	Z	Observed(Å)	Ideal(Å)
1	A	174	CYS	CB-SG	-6.24	1.71	1.82
1	A	77	CYS	CB-SG	-5.89	1.72	1.81
1	D	77	CYS	CB-SG	-5.70	1.72	1.81
2	B	211	CYS	CB-SG	5.02	1.90	1.82

All (10) bond angle outliers are listed below:

Mol	Chain	Res	Type	Atoms	Z	Observed(°)	Ideal(°)
1	D	150	VAL	CB-CA-C	-6.67	98.73	111.40
2	E	201	LEU	N-CA-C	-6.19	94.30	111.00
1	A	150	VAL	CB-CA-C	-5.81	100.37	111.40

Continued on next page...

Continued from previous page...

Mol	Chain	Res	Type	Atoms	Z	Observed(°)	Ideal(°)
2	B	116	ARG	CB-CG-CD	-5.59	97.07	111.60
2	E	116	ARG	CB-CG-CD	-5.58	97.09	111.60
2	B	201	LEU	N-CA-C	-5.56	95.98	111.00
2	B	115	ASP	CB-CG-OD1	5.30	123.07	118.30
2	B	70	ARG	NE-CZ-NH2	-5.28	117.66	120.30
2	B	286	PHE	N-CA-C	-5.09	97.25	111.00
2	E	290	GLY	N-CA-C	5.08	125.80	113.10

There are no chirality outliers.

All (2) planarity outliers are listed below:

Mol	Chain	Res	Type	Group
1	A	232	TYR	Sidechain
1	D	232	TYR	Sidechain

5.2 Too-close contacts

In the following table, the Non-H and H(model) columns list the number of non-hydrogen atoms and hydrogen atoms in the chain respectively. The H(added) column lists the number of hydrogen atoms added and optimized by MolProbity. The Clashes column lists the number of clashes within the asymmetric unit, whereas Symm-Clashes lists symmetry related clashes.

Mol	Chain	Non-H	H(model)	H(added)	Clashes	Symm-Clashes
1	A	2069	0	2129	50	0
1	D	2069	0	2129	50	0
2	B	2908	0	2962	87	0
2	E	2885	0	2940	73	0
3	A	5	0	0	0	0
3	D	5	0	0	0	0
4	B	10	0	0	0	0
4	E	10	0	0	0	0
5	A	48	0	32	6	0
5	B	27	0	22	8	0
5	D	48	0	32	4	0
5	E	8	0	7	1	0
6	A	6	0	7	3	0
7	A	146	0	0	2	1
7	B	191	0	0	6	1
7	D	96	0	0	2	0
7	E	160	0	0	7	0
All	All	10691	0	10260	247	1

The all-atom clashscore is defined as the number of clashes found per 1000 atoms (including hydrogen atoms). The all-atom clashscore for this structure is 12.

All (247) close contacts within the same asymmetric unit are listed below, sorted by their clash magnitude.

Atom-1	Atom-2	Interatomic distance (Å)	Clash overlap (Å)
2:B:124:MET:CE	2:B:124:MET:SD	2.05	1.45
2:B:320:GLY:HA2	5:B:1903:COA:H32	1.55	0.88
2:E:346:VAL:HB	2:E:381:VAL:HG13	1.61	0.83
2:E:312:LYS:O	2:E:343:VAL:HB	1.79	0.82
2:B:289:VAL:O	2:B:289:VAL:HG12	1.80	0.82
2:B:248:TRP:CD2	2:B:300:GLU:HG3	2.17	0.79
2:E:248:TRP:CD2	2:E:300:GLU:HG3	2.18	0.78
1:A:229:VAL:H	6:A:1700:GOL:H11	1.51	0.76
2:B:346:VAL:HB	2:B:381:VAL:HG13	1.66	0.76
1:D:9:LYS:HE3	7:D:1688:HOH:O	1.88	0.74
2:B:128:GLU:OE2	7:B:1958:HOH:O	2.07	0.73
2:B:352:ASN:HD22	5:B:1903:COA:H72	1.54	0.72
1:A:57:ARG:NH1	1:A:86:ASP:OD2	2.22	0.72
2:B:320:GLY:CA	5:B:1903:COA:H32	2.21	0.71
2:B:318:ILE:HG21	2:B:328:ILE:CD1	2.21	0.71
2:E:241:ARG:HH12	2:E:308:ASP:HB2	1.56	0.70
2:B:352:ASN:ND2	5:B:1903:COA:H72	2.06	0.70
2:E:68:ASP:OD2	7:E:1959:HOH:O	2.10	0.69
2:E:318:ILE:HG21	2:E:328:ILE:HD13	1.74	0.68
1:D:248:GLY:O	2:E:116:ARG:NH2	2.27	0.68
2:E:318:ILE:HG21	2:E:328:ILE:CD1	2.24	0.68
2:B:248:TRP:CE2	2:B:300:GLU:HG3	2.28	0.68
1:D:136:ILE:HD11	5:D:1301:COA:H21	1.75	0.68
2:E:248:TRP:CE2	2:E:300:GLU:HG3	2.30	0.67
2:B:315:LEU:HB2	2:B:381:VAL:HG11	1.76	0.67
1:A:248:GLY:O	2:B:116:ARG:NH2	2.27	0.67
2:B:124:MET:CE	2:B:124:MET:CB	2.73	0.67
2:B:322:ILE:HG22	5:B:1903:COA:H61A	1.61	0.66
1:A:155:THR:HG21	2:B:264:ASN:O	1.96	0.66
1:D:57:ARG:NH1	1:D:86:ASP:OD2	2.28	0.65
2:E:315:LEU:HB2	2:E:381:VAL:HG11	1.79	0.65
2:B:292:GLY:O	2:B:294:THR:N	2.27	0.64
1:D:186:ASN:HB2	7:D:1636:HOH:O	1.97	0.64
1:A:229:VAL:N	6:A:1700:GOL:H11	2.12	0.64
2:B:141:PRO:HD2	7:B:2065:HOH:O	1.97	0.64
2:E:32:GLU:OE1	2:E:70:ARG:HD2	1.98	0.64
2:E:260:GLY:HA2	2:E:285:ASN:OD1	1.99	0.63

Continued on next page...

Continued from previous page...

Atom-1	Atom-2	Interatomic distance (Å)	Clash overlap (Å)
2:E:289:VAL:HG12	2:E:289:VAL:O	1.98	0.62
1:A:181:PRO:O	2:B:116:ARG:HD3	1.99	0.62
2:B:318:ILE:HG21	2:B:328:ILE:HD13	1.80	0.62
2:B:213:ASP:HB3	7:B:1911:HOH:O	1.99	0.62
1:A:137:GLN:OE1	1:A:137:GLN:N	2.33	0.61
1:A:123:CYS:C	5:A:1300:COA:H22	2.21	0.61
2:E:336:VAL:HG12	2:E:366:LEU:HD22	1.82	0.60
1:D:155:THR:HG21	2:E:264:ASN:O	2.01	0.60
1:A:150:VAL:HG13	1:A:190:ILE:HG21	1.83	0.60
1:D:150:VAL:HG13	1:D:190:ILE:HG21	1.84	0.60
2:B:241:ARG:HH12	2:B:308:ASP:HB2	1.67	0.60
2:E:320:GLY:HA2	5:E:1904:COA:H32	1.83	0.60
2:B:348:ARG:C	2:B:348:ARG:HD2	2.22	0.59
2:B:140:THR:HB	2:B:143:LEU:HD12	1.84	0.59
2:E:346:VAL:CB	2:E:381:VAL:HG13	2.31	0.59
1:A:136:ILE:HD11	5:A:1300:COA:H21	1.84	0.59
2:B:352:ASN:HD22	5:B:1903:COA:C7P	2.15	0.59
2:E:343:VAL:HB	2:E:344:PRO:HD2	1.85	0.59
2:E:297:ARG:NH2	7:E:1953:HOH:O	2.36	0.58
2:E:124:MET:HA	2:E:145:HIS:O	2.03	0.58
2:E:103:ASP:HB3	2:E:205:LYS:HG3	1.85	0.58
1:D:136:ILE:CD1	5:D:1301:COA:H21	2.33	0.58
2:E:377:ALA:O	2:E:381:VAL:HG22	2.04	0.57
2:B:260:GLY:HA2	2:B:285:ASN:OD1	2.03	0.57
2:E:348:ARG:HD2	2:E:348:ARG:C	2.24	0.57
2:E:303:LYS:HG3	2:E:339:VAL:HG22	1.86	0.57
2:E:84:TYR:CE1	2:E:85:GLN:HG3	2.39	0.57
2:B:124:MET:HE2	2:B:124:MET:HB2	1.85	0.57
2:B:303:LYS:HG3	2:B:339:VAL:HG22	1.87	0.57
1:A:186:ASN:C	1:A:186:ASN:HD22	2.08	0.56
2:B:124:MET:CE	2:B:124:MET:HB2	2.35	0.56
2:E:134:GLU:HB2	7:E:2047:HOH:O	2.06	0.56
2:B:289:VAL:O	2:B:289:VAL:CG1	2.50	0.56
2:B:103:ASP:HB3	2:B:205:LYS:HG3	1.88	0.56
2:E:312:LYS:O	2:E:344:PRO:HD2	2.07	0.55
2:B:32:GLU:OE1	2:B:70:ARG:HD2	2.06	0.55
1:A:199:GLN:O	1:A:199:GLN:HG2	2.05	0.55
2:E:292:GLY:O	2:E:294:THR:HG23	2.07	0.55
1:D:223:GLU:HG2	1:D:224:HIS:CD2	2.42	0.55
1:D:196:LYS:HG2	1:D:196:LYS:O	2.06	0.54
2:E:58:GLY:HA2	7:E:2016:HOH:O	2.07	0.54

Continued on next page...

Continued from previous page...

Atom-1	Atom-2	Interatomic distance (Å)	Clash overlap (Å)
1:D:151:SER:HB3	1:D:157:THR:OG1	2.08	0.54
1:D:137:GLN:N	1:D:137:GLN:OE1	2.41	0.54
2:B:352:ASN:O	2:B:353:ASN:HB2	2.08	0.54
1:A:123:CYS:O	5:A:1300:COA:H22	2.08	0.54
2:B:84:TYR:CE1	2:B:85:GLN:HG3	2.43	0.54
2:E:306:LEU:CD1	2:E:341:VAL:HG22	2.37	0.54
2:B:333:ILE:HG23	2:B:366:LEU:CD1	2.38	0.54
1:A:129:PRO:HG2	1:A:171:GLN:HB2	1.90	0.53
1:A:202:ALA:HB2	1:A:287:LEU:HD11	1.90	0.53
1:A:151:SER:HB3	1:A:157:THR:OG1	2.08	0.53
2:E:297:ARG:NH1	2:E:297:ARG:HB2	2.23	0.53
1:A:12:CYS:HB2	1:A:34:MET:HE1	1.91	0.53
1:D:186:ASN:HD22	1:D:186:ASN:C	2.12	0.53
1:A:123:CYS:HB2	1:A:176:GLY:O	2.09	0.53
1:A:196:LYS:HG2	1:A:196:LYS:O	2.08	0.53
2:E:352:ASN:O	2:E:353:ASN:HB2	2.08	0.53
1:D:145:GLY:HA3	1:D:170:GLY:HA3	1.91	0.52
2:E:50:HIS:HD2	7:E:1906:HOH:O	1.93	0.52
1:D:202:ALA:HB2	1:D:287:LEU:HD11	1.91	0.52
2:E:213:ASP:HB3	7:E:2010:HOH:O	2.08	0.52
1:D:199:GLN:O	1:D:199:GLN:HG2	2.10	0.52
2:E:196:ILE:HG12	2:E:216:LEU:HD22	1.92	0.51
2:B:292:GLY:O	2:B:294:THR:HG23	2.11	0.51
1:A:151:SER:HB2	1:A:206:ILE:HB	1.92	0.51
1:D:123:CYS:HB2	1:D:176:GLY:O	2.11	0.51
2:B:87:ASP:OD1	2:B:89:ASN:N	2.31	0.51
2:B:312:LYS:O	2:B:344:PRO:HD2	2.10	0.50
2:B:336:VAL:HA	2:B:341:VAL:CG2	2.41	0.50
1:D:169:PHE:HZ	1:D:284:LYS:HA	1.76	0.50
2:E:241:ARG:HD3	2:E:307:SER:OG	2.12	0.50
2:B:124:MET:HG3	2:B:144:ILE:HG23	1.94	0.50
1:D:192:GLU:HB2	1:D:220:TYR:OH	2.12	0.50
2:E:87:ASP:OD1	2:E:89:ASN:N	2.32	0.50
2:E:289:VAL:O	2:E:289:VAL:CG1	2.59	0.50
2:B:346:VAL:CB	2:B:381:VAL:HG13	2.38	0.50
2:B:310:LYS:HE2	2:B:310:LYS:HA	1.93	0.50
2:E:215:LYS:O	2:E:216:LEU:HD23	2.12	0.49
2:B:251:ASN:HB2	2:B:288:ASP:HB3	1.94	0.49
2:B:58:GLY:HA2	7:B:1949:HOH:O	2.12	0.49
2:B:242:GLU:HG2	2:B:252:TYR:O	2.11	0.49
2:B:140:THR:CB	2:B:143:LEU:HD12	2.42	0.49

Continued on next page...

Continued from previous page...

Atom-1	Atom-2	Interatomic distance (Å)	Clash overlap (Å)
1:D:159:GLU:OE2	2:E:319:PHE:HD2	1.94	0.49
1:A:6:LYS:N	1:A:131:GLU:HB3	2.27	0.49
1:D:11:ILE:HA	1:D:36:GLY:O	2.12	0.49
1:D:129:PRO:HG2	1:D:171:GLN:HB2	1.94	0.49
2:B:50:HIS:HD2	7:B:1918:HOH:O	1.96	0.49
2:B:215:LYS:O	2:B:216:LEU:HD23	2.12	0.49
1:D:67:ALA:HA	1:D:91:LEU:O	2.13	0.49
1:D:71:TYR:CE1	1:D:95:ILE:HG13	2.48	0.49
1:D:251:ILE:HG23	1:D:255:LYS:O	2.13	0.48
1:A:164:THR:HG22	1:A:283:LEU:CD1	2.44	0.48
2:B:333:ILE:HG23	2:B:366:LEU:HD12	1.94	0.48
2:B:254:ALA:C	2:B:255:LEU:HD12	2.34	0.48
2:E:133:ILE:O	2:E:133:ILE:HG12	2.14	0.48
2:B:249:GLU:OE1	2:E:70:ARG:NH2	2.46	0.48
1:A:97:GLU:HB3	5:A:1300:COA:H71	1.96	0.48
2:B:131:VAL:HG12	2:B:132:GLU:N	2.29	0.48
2:E:330:ASP:OD1	2:E:360:LYS:HD3	2.13	0.48
2:B:163:LEU:O	2:B:167:LEU:HG	2.14	0.48
1:A:275:SER:HB2	2:B:278:LEU:CD2	2.44	0.48
2:E:272:THR:O	2:E:275:ILE:HG22	2.14	0.47
2:B:249:GLU:CD	2:E:70:ARG:HH22	2.17	0.47
2:B:292:GLY:HA3	2:B:322:ILE:HD11	1.96	0.47
2:E:292:GLY:HA2	2:E:322:ILE:HD11	1.97	0.47
2:B:87:ASP:OD1	2:B:87:ASP:C	2.52	0.47
2:E:346:VAL:CG2	2:E:381:VAL:HG13	2.44	0.47
2:E:87:ASP:C	2:E:87:ASP:OD1	2.53	0.47
2:B:261:CYS:O	2:B:287:LEU:HB3	2.15	0.47
1:D:164:THR:HG22	1:D:283:LEU:CD1	2.45	0.47
1:D:199:GLN:O	1:D:199:GLN:CG	2.63	0.47
2:E:254:ALA:C	2:E:255:LEU:HD12	2.35	0.47
1:D:12:CYS:O	1:D:15:PHE:HB2	2.15	0.47
2:E:67:GLU:H	2:E:67:GLU:CD	2.18	0.47
2:B:297:ARG:NH1	2:B:297:ARG:HB2	2.29	0.46
2:E:261:CYS:O	2:E:287:LEU:HB3	2.16	0.46
1:A:229:VAL:H	6:A:1700:GOL:C1	2.25	0.46
1:D:197:ASP:O	1:D:227:LYS:NZ	2.49	0.46
2:E:292:GLY:O	2:E:294:THR:N	2.42	0.46
2:B:196:ILE:HG12	2:B:216:LEU:HD22	1.97	0.46
2:B:112:ALA:HA	2:B:122:VAL:O	2.16	0.46
2:B:233:ARG:HD3	2:B:235:GLN:HE21	1.81	0.46
1:A:137:GLN:H	1:A:137:GLN:CD	2.19	0.45

Continued on next page...

Continued from previous page...

Atom-1	Atom-2	Interatomic distance (Å)	Clash overlap (Å)
1:A:12:CYS:O	1:A:15:PHE:HB2	2.17	0.45
1:D:94:THR:O	1:D:121:PRO:HA	2.16	0.45
1:A:145:GLY:HA3	1:A:170:GLY:HA3	1.98	0.45
2:E:20:PRO:HD3	2:E:211:CYS:O	2.15	0.45
1:D:123:CYS:C	5:D:1301:COA:H22	2.37	0.45
1:A:71:TYR:CE1	1:A:95:ILE:HG13	2.51	0.45
2:B:65:SER:HB2	2:B:67:GLU:OE1	2.17	0.45
2:E:275:ILE:HD13	2:E:374:LEU:HG	1.98	0.45
2:B:319:PHE:C	2:B:319:PHE:CD1	2.90	0.45
2:E:17:LEU:N	2:E:17:LEU:HD23	2.32	0.45
2:B:322:ILE:HB	5:B:1903:COA:N6A	2.32	0.45
1:A:199:GLN:CG	1:A:199:GLN:O	2.64	0.45
1:A:138:PRO:HA	1:A:140:HIS:CE1	2.52	0.45
2:B:145:HIS:ND1	2:B:166:LYS:HD3	2.32	0.45
1:A:127:ILE:HG22	1:A:174:CYS:HB2	2.00	0.44
1:D:81:ILE:O	1:D:85:ILE:HG13	2.17	0.44
2:E:328:ILE:O	2:E:332:ILE:HG13	2.17	0.44
1:D:138:PRO:HA	1:D:140:HIS:CE1	2.53	0.44
2:B:197:GLU:HB3	2:B:215:LYS:HB3	1.99	0.44
1:D:151:SER:CB	1:D:157:THR:OG1	2.66	0.44
1:A:223:GLU:HG2	1:A:224:HIS:CD2	2.52	0.44
1:D:6:LYS:N	1:D:131:GLU:HB3	2.33	0.44
2:B:377:ALA:O	2:B:381:VAL:HG22	2.17	0.44
1:D:30:TYR:OH	1:D:129:PRO:HA	2.17	0.44
2:E:258:ASN:HD22	2:E:258:ASN:H	1.65	0.44
1:D:151:SER:HA	1:D:206:ILE:O	2.18	0.44
2:E:241:ARG:CD	2:E:307:SER:OG	2.65	0.43
1:A:15:PHE:CD2	1:A:37:GLY:HA3	2.53	0.43
1:A:278:ASP:OD2	7:A:1729:HOH:O	2.21	0.43
2:B:322:ILE:CG2	5:B:1903:COA:H61A	2.30	0.43
1:A:30:TYR:OH	1:A:129:PRO:HA	2.19	0.43
2:B:95:GLN:HB2	2:B:95:GLN:HE21	1.39	0.43
1:A:136:ILE:CD1	5:A:1300:COA:H21	2.48	0.43
1:D:159:GLU:OE1	2:E:348:ARG:NH2	2.51	0.43
1:D:127:ILE:HG22	1:D:174:CYS:HB2	1.99	0.43
2:B:61:LYS:HD3	7:B:2078:HOH:O	2.19	0.43
2:E:65:SER:HB2	2:E:67:GLU:OE1	2.18	0.43
1:D:181:PRO:O	2:E:116:ARG:HD3	2.17	0.43
2:B:139:GLU:C	2:B:141:PRO:HD3	2.39	0.43
2:B:241:ARG:HD3	2:B:307:SER:OG	2.19	0.43
1:A:154:GLY:O	1:A:157:THR:HB	2.19	0.43

Continued on next page...

Continued from previous page...

Atom-1	Atom-2	Interatomic distance (Å)	Clash overlap (Å)
1:A:151:SER:CB	1:A:206:ILE:HB	2.50	0.42
1:A:169:PHE:HZ	1:A:284:LYS:HA	1.84	0.42
2:B:20:PRO:HD3	2:B:211:CYS:O	2.19	0.42
1:D:151:SER:HB2	1:D:206:ILE:HB	2.00	0.42
2:E:306:LEU:HD11	2:E:341:VAL:HG22	2.02	0.42
1:D:99:ILE:HD12	1:D:121:PRO:CB	2.50	0.42
2:B:76:TRP:O	2:B:79:LYS:HB3	2.19	0.42
1:A:151:SER:CB	1:A:157:THR:OG1	2.68	0.42
1:A:155:THR:OG1	2:B:268:LEU:HB2	2.19	0.42
2:E:285:ASN:HB3	7:E:1943:HOH:O	2.19	0.42
2:B:241:ARG:CD	2:B:307:SER:OG	2.67	0.42
2:B:310:LYS:HE2	2:B:310:LYS:CA	2.50	0.42
1:D:11:ILE:HG23	1:D:65:ALA:CB	2.50	0.42
1:D:138:PRO:HB2	1:D:140:HIS:ND1	2.35	0.42
2:E:256:ASP:O	2:E:257:GLY:O	2.38	0.42
1:A:251:ILE:HG23	1:A:255:LYS:O	2.20	0.42
1:A:155:THR:HB	2:B:268:LEU:HB2	2.01	0.42
2:B:133:ILE:HA	2:B:133:ILE:HD12	1.81	0.42
1:A:197:ASP:O	1:A:227:LYS:NZ	2.53	0.42
1:D:12:CYS:HB2	1:D:34:MET:HE1	2.02	0.41
1:A:151:SER:HA	1:A:206:ILE:O	2.20	0.41
1:A:156:LEU:CD2	1:A:276:LEU:HD22	2.50	0.41
2:E:310:LYS:HA	2:E:310:LYS:HE2	2.01	0.41
2:E:32:GLU:CD	2:E:70:ARG:HH11	2.23	0.41
5:A:1300:COA:H2B	7:A:1817:HOH:O	2.20	0.41
2:E:333:ILE:HG23	2:E:366:LEU:HD12	2.02	0.41
1:A:138:PRO:HB2	1:A:140:HIS:ND1	2.36	0.41
2:E:369:ILE:HG21	2:E:380:GLN:OE1	2.20	0.41
1:D:287:LEU:HA	1:D:287:LEU:HD12	1.89	0.41
1:D:222:LYS:HB2	1:D:268:ALA:HB1	2.03	0.41
2:B:328:ILE:O	2:B:332:ILE:HG13	2.20	0.41
1:D:255:LYS:HA	1:D:255:LYS:HE2	2.03	0.41
2:E:147:VAL:HG22	2:E:163:LEU:HD11	2.02	0.41
2:E:245:ALA:HB1	2:E:250:LEU:HB2	2.02	0.41
1:A:57:ARG:NH1	1:A:86:ASP:O	2.53	0.41
1:D:97:GLU:HB3	5:D:1301:COA:H71	2.02	0.41
2:B:67:GLU:CD	2:B:67:GLU:H	2.24	0.41
1:D:156:LEU:CD2	1:D:276:LEU:HD22	2.51	0.40
2:E:212:LEU:HA	2:E:212:LEU:HD12	1.86	0.40
2:B:124:MET:CE	2:B:124:MET:HB3	2.51	0.40
1:A:159:GLU:OE1	2:B:348:ARG:NH2	2.55	0.40

Continued on next page...

Continued from previous page...

Atom-1	Atom-2	Interatomic distance (Å)	Clash overlap (Å)
2:B:319:PHE:HD1	2:B:319:PHE:C	2.24	0.40
2:E:109:TYR:O	2:E:125:ALA:HA	2.21	0.40
2:B:287:LEU:CD1	2:B:287:LEU:C	2.90	0.40
2:B:272:THR:O	2:B:275:ILE:HG22	2.20	0.40
2:E:163:LEU:O	2:E:167:LEU:HG	2.22	0.40

All (1) symmetry-related close contacts are listed below. The label for Atom-2 includes the symmetry operator and encoded unit-cell translations to be applied.

Atom-1	Atom-2	Interatomic distance (Å)	Clash overlap (Å)
7:A:1753:HOH:O	7:B:2072:HOH:O[7_555]	2.16	0.04

5.3 Torsion angles ⓘ

5.3.1 Protein backbone ⓘ

In the following table, the Percentiles column shows the percent Ramachandran outliers of the chain as a percentile score with respect to all X-ray entries followed by that with respect to entries of similar resolution.

The Analysed column shows the number of residues for which the backbone conformation was analysed, and the total number of residues.

Mol	Chain	Analysed	Favoured	Allowed	Outliers	Percentiles	
1	A	285/288 (99%)	279 (98%)	6 (2%)	0	100	100
1	D	285/288 (99%)	275 (96%)	10 (4%)	0	100	100
2	B	386/388 (100%)	374 (97%)	8 (2%)	4 (1%)	19	20
2	E	383/388 (99%)	371 (97%)	9 (2%)	3 (1%)	24	26
All	All	1339/1352 (99%)	1299 (97%)	33 (2%)	7 (0%)	34	39

All (7) Ramachandran outliers are listed below:

Mol	Chain	Res	Type
2	B	293	ALA
2	E	293	ALA
2	B	257	GLY
2	B	289	VAL
2	B	290	GLY

Continued on next page...

Continued from previous page...

Mol	Chain	Res	Type
2	E	257	GLY
2	E	291	GLY

5.3.2 Protein sidechains ⓘ

In the following table, the Percentiles column shows the percent sidechain outliers of the chain as a percentile score with respect to all X-ray entries followed by that with respect to entries of similar resolution.

The Analysed column shows the number of residues for which the sidechain conformation was analysed, and the total number of residues.

Mol	Chain	Analysed	Rotameric	Outliers	Percentiles	
1	A	217/218 (100%)	207 (95%)	10 (5%)	33	42
1	D	217/218 (100%)	207 (95%)	10 (5%)	33	42
2	B	298/298 (100%)	287 (96%)	11 (4%)	41	53
2	E	296/298 (99%)	284 (96%)	12 (4%)	37	48
All	All	1028/1032 (100%)	985 (96%)	43 (4%)	36	46

All (43) residues with a non-rotameric sidechain are listed below:

Mol	Chain	Res	Type
1	A	40	PRO
1	A	137	GLN
1	A	140	HIS
1	A	150	VAL
1	A	153	SER
1	A	186	ASN
1	A	242	LYS
1	A	255	LYS
1	A	273	VAL
1	A	287	LEU
2	B	70	ARG
2	B	95	GLN
2	B	124	MET
2	B	200	PRO
2	B	247	GLN
2	B	258	ASN
2	B	287	LEU
2	B	309	ASP
2	B	319	PHE

Continued on next page...

Continued from previous page...

Mol	Chain	Res	Type
2	B	348	ARG
2	B	381	VAL
1	D	77	CYS
1	D	137	GLN
1	D	140	HIS
1	D	150	VAL
1	D	153	SER
1	D	186	ASN
1	D	242	LYS
1	D	255	LYS
1	D	273	VAL
1	D	287	LEU
2	E	70	ARG
2	E	95	GLN
2	E	124	MET
2	E	133	ILE
2	E	247	GLN
2	E	258	ASN
2	E	287	LEU
2	E	309	ASP
2	E	319	PHE
2	E	348	ARG
2	E	364	SER
2	E	381	VAL

Some sidechains can be flipped to improve hydrogen bonding and reduce clashes. All (15) such sidechains are listed below:

Mol	Chain	Res	Type
1	A	186	ASN
2	B	50	HIS
2	B	85	GLN
2	B	95	GLN
2	B	235	GLN
2	B	258	ASN
2	B	342	ASN
2	B	352	ASN
2	E	50	HIS
2	E	95	GLN
2	E	235	GLN
2	E	258	ASN
2	E	279	HIS
2	E	342	ASN

Continued on next page...

Continued from previous page...

Mol	Chain	Res	Type
2	E	353	ASN

5.3.3 RNA ⓘ

There are no RNA molecules in this entry.

5.4 Non-standard residues in protein, DNA, RNA chains ⓘ

There are no non-standard protein/DNA/RNA residues in this entry.

5.5 Carbohydrates ⓘ

There are no carbohydrates in this entry.

5.6 Ligand geometry ⓘ

11 ligands are modelled in this entry.

In the following table, the Counts columns list the number of bonds (or angles) for which Mogul statistics could be retrieved, the number of bonds (or angles) that are observed in the model and the number of bonds (or angles) that are defined in the chemical component dictionary. The Link column lists molecule types, if any, to which the group is linked. The Z score for a bond length (or angle) is the number of standard deviations the observed value is removed from the expected value. A bond length (or angle) with $|Z| > 2$ is considered an outlier worth inspection. RMSZ is the root-mean-square of all Z scores of the bond lengths (or angles).

Mol	Type	Chain	Res	Link	Bond lengths			Bond angles		
					Counts	RMSZ	# Z > 2	Counts	RMSZ	# Z > 2
5	COA	A	1300	-	40,50,50	1.01	1 (2%)	50,75,75	1.77	7 (14%)
3	PO4	A	1600	-	4,4,4	0.96	0	6,6,6	0.28	0
6	GOL	A	1700	-	5,5,5	0.48	0	5,5,5	1.91	3 (60%)
4	SO4	B	1400	-	4,4,4	0.42	0	6,6,6	0.19	0
4	SO4	B	1500	-	4,4,4	0.60	0	6,6,6	0.28	0
5	COA	B	1903	2	23,27,50	4.59	6 (26%)	22,36,75	3.75	12 (54%)
5	COA	D	1301	-	40,50,50	0.90	1 (2%)	50,75,75	1.81	9 (18%)
3	PO4	D	1601	-	4,4,4	1.02	0	6,6,6	0.27	0
4	SO4	E	1401	-	4,4,4	0.47	0	6,6,6	0.23	0
4	SO4	E	1501	-	4,4,4	0.50	0	6,6,6	0.24	0
5	COA	E	1904	2	7,7,50	2.16	3 (42%)	5,7,75	3.01	4 (80%)

In the following table, the Chirals column lists the number of chiral outliers, the number of chiral centers analysed, the number of these observed in the model and the number defined in the chemical component dictionary. Similar counts are reported in the Torsion and Rings columns. '-' means no outliers of that kind were identified.

Mol	Type	Chain	Res	Link	Chirals	Torsions	Rings
5	COA	A	1300	-	-	0/44/64/64	0/3/3/3
3	PO4	A	1600	-	-	0/0/0/0	0/0/0/0
6	GOL	A	1700	-	-	0/4/4/4	0/0/0/0
4	SO4	B	1400	-	-	0/0/0/0	0/0/0/0
4	SO4	B	1500	-	-	0/0/0/0	0/0/0/0
5	COA	B	1903	2	-	0/20/20/64	0/2/2/3
5	COA	D	1301	-	-	0/44/64/64	0/3/3/3
3	PO4	D	1601	-	-	0/0/0/0	0/0/0/0
4	SO4	E	1401	-	-	0/0/0/0	0/0/0/0
4	SO4	E	1501	-	-	0/0/0/0	0/0/0/0
5	COA	E	1904	2	-	0/6/6/64	0/0/0/3

All (11) bond length outliers are listed below:

Mol	Chain	Res	Type	Atoms	Z	Observed(Å)	Ideal(Å)
5	D	1301	COA	CDP-CBP	-2.03	1.49	1.53
5	B	1903	COA	C4A-N9A	2.00	1.38	1.34
5	A	1300	COA	C6P-C5P	2.69	1.56	1.51
5	E	1904	COA	C3P-N4P	2.84	1.52	1.46
5	E	1904	COA	C2P-S1P	2.93	1.91	1.80
5	B	1903	COA	C2P-S1P	2.93	1.91	1.80
5	E	1904	COA	C6P-C5P	3.28	1.62	1.51
5	B	1903	COA	C7P-N8P	3.63	1.54	1.46
5	B	1903	COA	C3P-N4P	3.87	1.55	1.46
5	B	1903	COA	C6P-C5P	6.78	1.64	1.51
5	B	1903	COA	CBP-CAP	19.38	1.69	1.55

All (35) bond angle outliers are listed below:

Mol	Chain	Res	Type	Atoms	Z	Observed(°)	Ideal(°)
5	B	1903	COA	OAP-CAP-CBP	-8.22	94.34	110.04
5	B	1903	COA	CEP-CBP-CCP	-5.51	97.53	108.75
5	A	1300	COA	O5P-C5P-C6P	-5.29	112.85	121.98
5	B	1903	COA	O5P-C5P-N4P	-5.18	112.66	122.94
5	D	1301	COA	O5P-C5P-C6P	-4.92	113.50	121.98
5	A	1300	COA	CDP-CBP-CAP	-4.73	100.72	109.34
5	D	1301	COA	O3B-P3B-O7A	-4.20	96.63	107.11
5	D	1301	COA	C2P-C3P-N4P	-4.19	104.10	112.37

Continued on next page...

Continued from previous page...

Mol	Chain	Res	Type	Atoms	Z	Observed(°)	Ideal(°)
5	A	1300	COA	C2P-C3P-N4P	-3.79	104.89	112.37
5	A	1300	COA	P2A-O3A-P1A	-3.74	122.24	132.73
5	D	1301	COA	P2A-O3A-P1A	-3.69	122.37	132.73
5	B	1903	COA	O9P-C9P-N8P	-2.63	117.81	123.08
5	E	1904	COA	O5P-C5P-N4P	-2.51	117.95	122.94
5	D	1301	COA	CDP-CBP-CAP	-2.29	105.17	109.34
5	D	1301	COA	O6A-CCP-CBP	-2.26	106.92	110.55
5	D	1301	COA	C4B-O4B-C1B	-2.03	107.48	109.72
5	B	1903	COA	O5P-C5P-C6P	2.03	125.48	121.98
6	A	1700	GOL	C3-C2-C1	2.23	119.86	111.12
6	A	1700	GOL	O2-C2-C3	2.44	119.85	108.65
5	E	1904	COA	C2P-C3P-N4P	2.46	117.23	112.37
5	A	1300	COA	CEP-CBP-CDP	2.49	114.28	109.28
6	A	1700	GOL	O2-C2-C1	2.54	120.28	108.65
5	B	1903	COA	C3P-N4P-C5P	2.54	127.79	122.79
5	B	1903	COA	CDP-CBP-CAP	2.60	114.85	109.53
5	B	1903	COA	C6P-C5P-N4P	3.10	121.84	116.46
5	D	1301	COA	CEP-CBP-CAP	3.27	115.31	109.34
5	A	1300	COA	CEP-CBP-CAP	3.27	115.32	109.34
5	B	1903	COA	C7P-N8P-C9P	3.40	129.26	122.53
5	B	1903	COA	CAP-C9P-N8P	3.58	124.40	116.47
5	E	1904	COA	C7P-C6P-C5P	3.97	126.70	113.45
5	E	1904	COA	C3P-N4P-C5P	4.15	130.96	122.79
5	A	1300	COA	C6P-C5P-N4P	4.41	124.12	116.46
5	B	1903	COA	C6P-C7P-N8P	6.07	125.20	111.88
5	D	1301	COA	C6P-C5P-N4P	6.25	127.32	116.46
5	B	1903	COA	C7P-C6P-C5P	8.86	126.91	112.31

There are no chirality outliers.

There are no torsion outliers.

There are no ring outliers.

5 monomers are involved in 22 short contacts:

Mol	Chain	Res	Type	Clashes	Symm-Clashes
5	A	1300	COA	6	0
6	A	1700	GOL	3	0
5	B	1903	COA	8	0
5	D	1301	COA	4	0
5	E	1904	COA	1	0

5.7 Other polymers

There are no such residues in this entry.

5.8 Polymer linkage issues

There are no chain breaks in this entry.

6 Fit of model and data ⓘ

6.1 Protein, DNA and RNA chains ⓘ

In the following table, the column labelled ‘#RSRZ> 2’ contains the number (and percentage) of RSRZ outliers, followed by percent RSRZ outliers for the chain as percentile scores relative to all X-ray entries and entries of similar resolution. The OWAB column contains the minimum, median, 95th percentile and maximum values of the occupancy-weighted average B-factor per residue. The column labelled ‘Q< 0.9’ lists the number of (and percentage) of residues with an average occupancy less than 0.9.

Mol	Chain	Analysed	<RSRZ>	#RSRZ>2	OWAB(Å ²)	Q<0.9
1	A	287/288 (99%)	-0.21	2 (0%) 89 94	13, 26, 44, 63	0
1	D	287/288 (99%)	0.12	6 (2%) 67 79	17, 36, 57, 66	0
2	B	388/388 (100%)	-0.00	15 (3%) 43 57	14, 33, 56, 68	0
2	E	385/388 (99%)	0.25	30 (7%) 16 25	17, 36, 70, 93	0
All	All	1347/1352 (99%)	0.05	53 (3%) 43 57	13, 33, 60, 93	0

All (53) RSRZ outliers are listed below:

Mol	Chain	Res	Type	RSRZ
2	E	363	ASP	5.7
2	E	88	ALA	4.8
2	E	356	LEU	4.4
2	E	324	ARG	4.4
2	E	322	ILE	4.3
2	E	352	ASN	4.1
2	E	293	ALA	4.1
2	E	372	LYS	4.0
2	E	353	ASN	3.9
2	B	309	ASP	3.7
2	E	84	TYR	3.7
2	E	323	VAL	3.6
2	E	355	GLU	3.3
1	A	140	HIS	3.2
2	E	256	ASP	3.2
2	E	342	ASN	3.2
2	E	362	ALA	3.0
2	E	316	VAL	2.9
2	B	322	ILE	2.9
1	D	7	ASN	2.9
2	E	40	ALA	2.9

Continued on next page...

Continued from previous page...

Mol	Chain	Res	Type	RSRZ
1	D	198	PRO	2.9
2	B	84	TYR	2.9
2	E	326	ASP	2.8
2	E	56	LYS	2.7
2	E	357	GLY	2.7
2	B	324	ARG	2.7
2	B	88	ALA	2.6
2	E	347	VAL	2.6
2	B	142	HIS	2.5
1	D	149	ILE	2.5
2	E	384	ALA	2.5
2	B	290	GLY	2.4
2	B	314	VAL	2.4
2	B	316	VAL	2.4
2	B	310	LYS	2.4
2	B	56	LYS	2.4
2	B	323	VAL	2.4
2	E	290	GLY	2.4
1	D	140	HIS	2.4
2	B	372	LYS	2.3
1	A	198	PRO	2.3
2	B	388	LYS	2.3
2	E	359	LYS	2.3
2	E	354	ALA	2.3
1	D	6	LYS	2.3
2	B	40	ALA	2.2
1	D	223	GLU	2.2
2	E	330	ASP	2.1
2	E	365	GLY	2.1
2	E	64	ASN	2.1
2	E	309	ASP	2.0
2	E	332	ILE	2.0

6.2 Non-standard residues in protein, DNA, RNA chains ⓘ

There are no non-standard protein/DNA/RNA residues in this entry.

6.3 Carbohydrates ⓘ

There are no carbohydrates in this entry.

6.4 Ligands [i](#)

In the following table, the Atoms column lists the number of modelled atoms in the group and the number defined in the chemical component dictionary. LLDF column lists the quality of electron density of the group with respect to its neighbouring residues in protein, DNA or RNA chains. The B-factors column lists the minimum, median, 95th percentile and maximum values of B factors of atoms in the group. The column labelled 'Q< 0.9' lists the number of atoms with occupancy less than 0.9.

Mol	Type	Chain	Res	Atoms	RSCC	RSR	LLDF	B-factors(Å ²)	Q<0.9
6	GOL	A	1700	6/6	0.77	0.29	4.25	72,73,74,74	0
5	COA	B	1903	27/48	0.64	0.25	1.00	67,79,90,90	0
4	SO4	B	1500	5/5	0.96	0.11	-0.01	55,56,57,57	0
3	PO4	A	1600	5/5	0.98	0.10	-0.04	30,35,37,37	0
4	SO4	B	1400	5/5	0.94	0.15	-0.13	75,75,76,76	0
5	COA	E	1904	8/48	0.71	0.23	-0.18	79,82,83,83	0
3	PO4	D	1601	5/5	0.99	0.10	-0.19	42,42,43,43	0
5	COA	A	1300	48/48	0.98	0.09	-0.45	22,25,43,53	0
4	SO4	E	1401	5/5	0.94	0.12	-0.50	70,71,73,73	0
5	COA	D	1301	48/48	0.98	0.10	-0.63	18,27,44,51	0
4	SO4	E	1501	5/5	0.93	0.22	-	65,68,68,69	0

6.5 Other polymers [i](#)

There are no such residues in this entry.