



# Full wwPDB X-ray Structure Validation Report ⓘ

Jan 31, 2016 – 08:16 PM GMT

PDB ID : 1JLG  
Title : CRYSTAL STRUCTURE OF Y188C MUTANT HIV-1 REVERSE TRANSCRIPTASE IN COMPLEX WITH UC-781  
Authors : Ren, J.; Nichols, C.; Bird, L.; Chamberlain, P.; Weaver, K.; Short, S.; Stuart, D.I.; Stammers, D.K.  
Deposited on : 2001-07-16  
Resolution : 2.60 Å(reported)

This is a Full wwPDB X-ray Structure Validation Report for a publicly released PDB entry.  
We welcome your comments at [validation@mail.wwpdb.org](mailto:validation@mail.wwpdb.org)  
A user guide is available at  
<http://wwpdb.org/validation/2016/XrayValidationReportHelp>  
with specific help available everywhere you see the ⓘ symbol.

---

The following versions of software and data (see [references ⓘ](#)) were used in the production of this report:

MolProbity : 4.02b-467  
Mogul : 1.7 (RC4), CSD as536be (2015)  
Xtriage (Phenix) : 1.9-1692  
EDS : rb-20026688  
Percentile statistics : 20151230.v01 (using entries in the PDB archive December 30th 2015)  
Refmac : 5.8.0135  
CCP4 : 6.5.0  
Ideal geometry (proteins) : Engh & Huber (2001)  
Ideal geometry (DNA, RNA) : Parkinson et al. (1996)  
Validation Pipeline (wwPDB-VP) : trunk26865

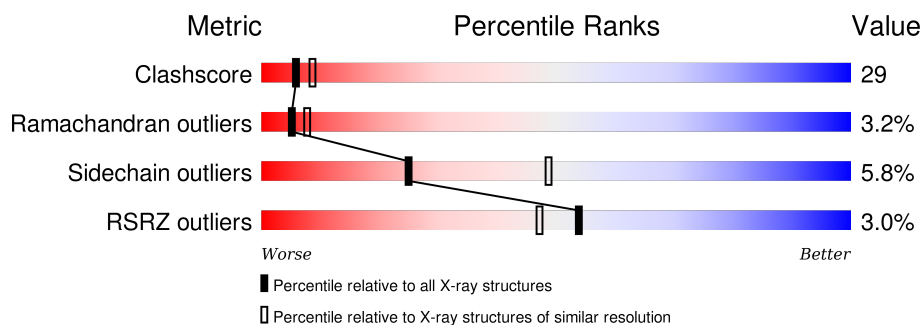
# 1 Overall quality at a glance

The following experimental techniques were used to determine the structure:

*X-RAY DIFFRACTION*

The reported resolution of this entry is 2.60 Å.

Percentile scores (ranging between 0-100) for global validation metrics of the entry are shown in the following graphic. The table shows the number of entries on which the scores are based.



Metric	Whole archive (#Entries)	Similar resolution (#Entries, resolution range(Å))
Clashscore	102246	2679 (2.60-2.60)
Ramachandran outliers	100387	2635 (2.60-2.60)
Sidechain outliers	100360	2635 (2.60-2.60)
RSRZ outliers	91569	2334 (2.60-2.60)

The table below summarises the geometric issues observed across the polymeric chains and their fit to the electron density. The red, orange, yellow and green segments on the lower bar indicate the fraction of residues that contain outliers for  $\geq 3$ , 2, 1 and 0 types of geometric quality criteria. A grey segment represents the fraction of residues that are not modelled. The numeric value for each fraction is indicated below the corresponding segment, with a dot representing fractions  $\leq 5\%$ . The upper red bar (where present) indicates the fraction of residues that have poor fit to the electron density. The numeric value is given above the bar.

Mol	Chain	Length	Quality of chain
1	A	560	
2	B	440	

## 2 Entry composition

There are 4 unique types of molecules in this entry. The entry contains 7744 atoms, of which 0 are hydrogens and 0 are deuteriums.

In the tables below, the ZeroOcc column contains the number of atoms modelled with zero occupancy, the AltConf column contains the number of residues with at least one atom in alternate conformation and the Trace column contains the number of residues modelled with at most 2 atoms.

- Molecule 1 is a protein called HIV-1 RT A-chain.

Mol	Chain	Residues	Atoms					ZeroOcc	AltConf	Trace
1	A	531	Total	C	N	O	S	0	0	0
			4335	2802	720	804	9			

There are 2 discrepancies between the modelled and reference sequences:

Chain	Residue	Modelled	Actual	Comment	Reference
A	188	CSD	TYR	ENGINEERED AND OXIDIZED CYS	UNP P04585
A	280	CSD	CYS	OXIDIZED CYS	UNP P04585

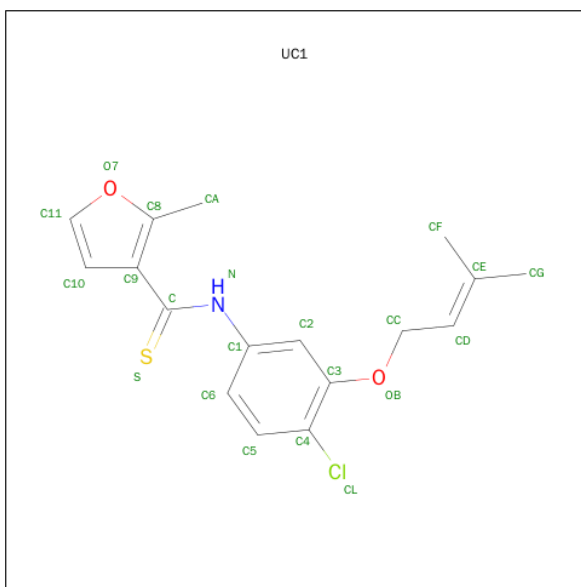
- Molecule 2 is a protein called HIV-1 RT B-chain.

Mol	Chain	Residues	Atoms					ZeroOcc	AltConf	Trace
2	B	405	Total	C	N	O	S	0	0	0
			3344	2171	558	607	8			

There is a discrepancy between the modelled and reference sequences:

Chain	Residue	Modelled	Actual	Comment	Reference
B	188	CYS	TYR	ENGINEERED	UNP P04585

- Molecule 3 is 2-METHYL-FURAN-3-CARBOTHIOIC ACID [4-CHLORO-3-(3-METHYL-BUT-2-ENYLOXY)-PHENYL]-AMIDE (three-letter code: UC1) (formula: C<sub>17</sub>H<sub>18</sub>ClNO<sub>2</sub>S).



Mol	Chain	Residues	Atoms						ZeroOcc	AltConf
3	A	1	Total	C	Cl	N	O	S	0	0
			22	17	1	1	2	1		

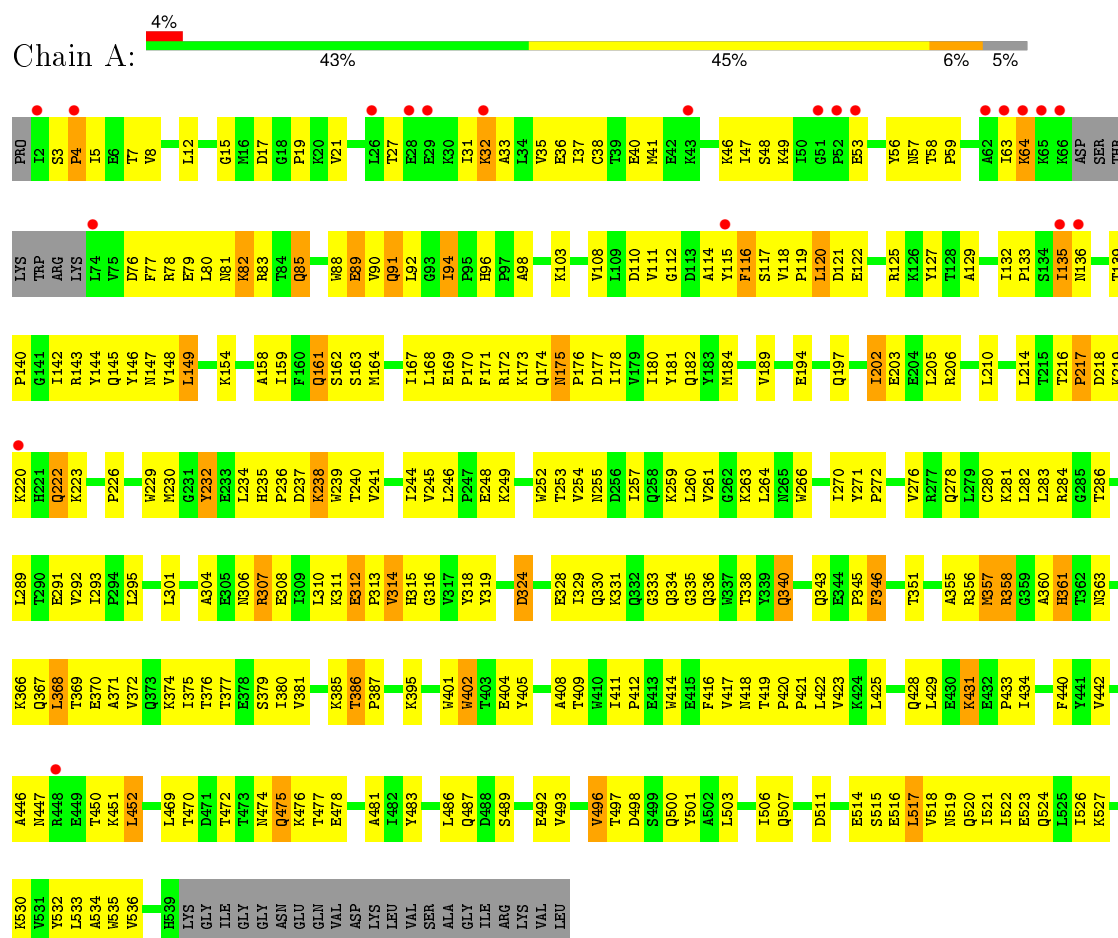
- Molecule 4 is water.

Mol	Chain	Residues	Atoms		ZeroOcc	AltConf
4	A	18	Total	O	0	0
			18	18		
4	B	25	Total	O	0	0
			25	25		

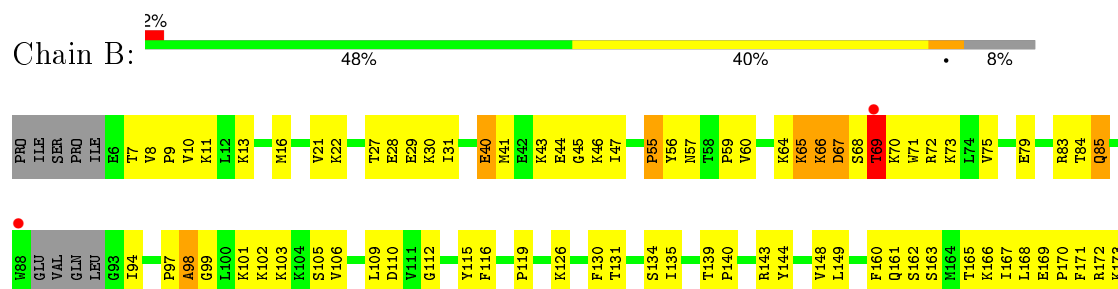
### 3 Residue-property plots

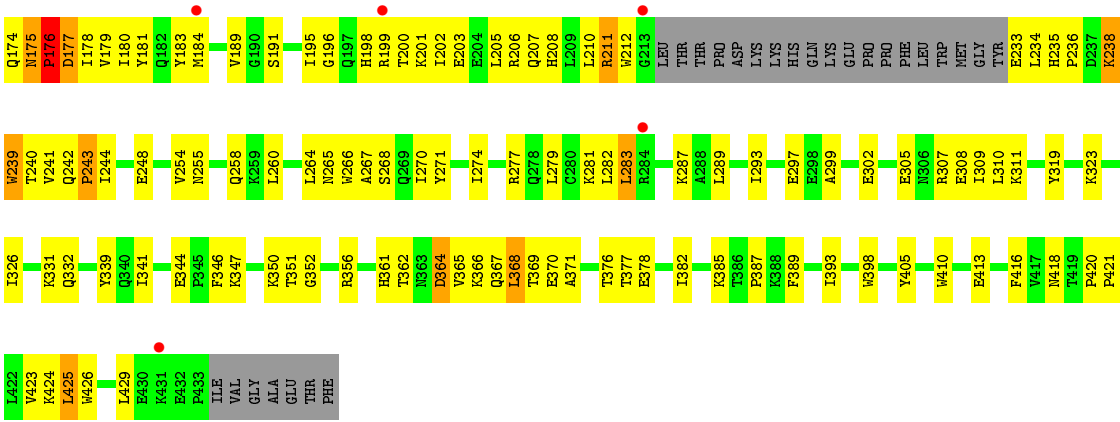
These plots are drawn for all protein, RNA and DNA chains in the entry. The first graphic for a chain summarises the proportions of errors displayed in the second graphic. The second graphic shows the sequence view annotated by issues in geometry and electron density. Residues are color-coded according to the number of geometric quality criteria for which they contain at least one outlier: green = 0, yellow = 1, orange = 2 and red = 3 or more. A red dot above a residue indicates a poor fit to the electron density ( $RSRZ > 2$ ). Stretches of 2 or more consecutive residues without any outlier are shown as a green connector. Residues present in the sample, but not in the model, are shown in grey.

#### • Molecule 1: HIV-1 RT A-chain



#### • Molecule 2: HIV-1 RT B-chain





## 4 Data and refinement statistics

Property	Value	Source
Space group	P 21 21 21	Depositor
Cell constants a, b, c, $\alpha$ , $\beta$ , $\gamma$	138.00 Å   109.80 Å   73.00 Å 90.00°   90.00°   90.00°	Depositor
Resolution (Å)	29.68 – 2.60 29.68 – 2.59	Depositor EDS
% Data completeness (in resolution range)	95.7 (29.68-2.60) 95.8 (29.68-2.59)	Depositor EDS
$R_{merge}$	0.06	Depositor
$R_{sym}$	(Not available)	Depositor
$\langle I/\sigma(I) \rangle$ <sup>1</sup>	1.42 (at 2.61 Å)	Xtriage
Refinement program	CNS 1.0	Depositor
R, $R_{free}$	0.220 ,   0.292 0.216 ,   (Not available)	Depositor DCC
$R_{free}$ test set	No test flags present.	DCC
Wilson B-factor (Å <sup>2</sup> )	59.4	Xtriage
Anisotropy	0.540	Xtriage
Bulk solvent $k_{sol}$ (e/Å <sup>3</sup> ), $B_{sol}$ (Å <sup>2</sup> )	0.30 , 73.7	EDS
Estimated twinning fraction	No twinning to report.	Xtriage
L-test for twinning <sup>2</sup>	$\langle  L  \rangle = 0.49$ , $\langle L^2 \rangle = 0.33$	Xtriage
Outliers	0 of 33690 reflections	Xtriage
$F_o, F_c$ correlation	0.95	EDS
Total number of atoms	7744	wwPDB-VP
Average B, all atoms (Å <sup>2</sup> )	71.0	wwPDB-VP

Xtriage's analysis on translational NCS is as follows: *The largest off-origin peak in the Patterson function is 3.04% of the height of the origin peak. No significant pseudotranslation is detected.*

<sup>1</sup>Intensities estimated from amplitudes.

<sup>2</sup>Theoretical values of  $\langle |L| \rangle$ ,  $\langle L^2 \rangle$  for acentric reflections are 0.5, 0.375 respectively for untwinned datasets, and 0.333, 0.2 for perfectly twinned datasets.

## 5 Model quality [i](#)

### 5.1 Standard geometry [i](#)

Bond lengths and bond angles in the following residue types are not validated in this section: CSD, UC1

The Z score for a bond length (or angle) is the number of standard deviations the observed value is removed from the expected value. A bond length (or angle) with  $|Z| > 5$  is considered an outlier worth inspection. RMSZ is the root-mean-square of all Z scores of the bond lengths (or angles).

Mol	Chain	Bond lengths		Bond angles	
		RMSZ	# Z  >5	RMSZ	# Z  >5
1	A	0.43	0/4431	0.67	0/6023
2	B	0.42	0/3437	0.69	1/4666 (0.0%)
All	All	0.43	0/7868	0.68	1/10689 (0.0%)

There are no bond length outliers.

All (1) bond angle outliers are listed below:

Mol	Chain	Res	Type	Atoms	Z	Observed(°)	Ideal(°)
2	B	69	THR	N-CA-C	-6.36	93.83	111.00

There are no chirality outliers.

There are no planarity outliers.

### 5.2 Too-close contacts [i](#)

In the following table, the Non-H and H(model) columns list the number of non-hydrogen atoms and hydrogen atoms in the chain respectively. The H(added) column lists the number of hydrogen atoms added and optimized by MolProbity. The Clashes column lists the number of clashes within the asymmetric unit, whereas Symm-Clashes lists symmetry related clashes.

Mol	Chain	Non-H	H(model)	H(added)	Clashes	Symm-Clashes
1	A	4335	0	4374	260	0
2	B	3344	0	3374	192	0
3	A	22	0	18	2	0
4	A	18	0	0	1	0
4	B	25	0	0	3	0
All	All	7744	0	7766	445	0

The all-atom clashscore is defined as the number of clashes found per 1000 atoms (including



hydrogen atoms). The all-atom clashscore for this structure is 29.

All (445) close contacts within the same asymmetric unit are listed below, sorted by their clash magnitude.

Atom-1	Atom-2	Interatomic distance (Å)	Clash overlap (Å)
1:A:333:GLY:HA3	1:A:336:GLN:HE21	1.28	0.99
1:A:110:ASP:HB3	1:A:217:PRO:HG3	1.48	0.95
2:B:169:GLU:HG2	2:B:173:LYS:HZ3	1.34	0.93
2:B:175:ASN:HD21	2:B:201:LYS:HD2	1.32	0.91
2:B:238:LYS:HZ3	2:B:239:TRP:HD1	1.11	0.91
1:A:358:ARG:HD3	1:A:358:ARG:H	1.40	0.87
2:B:175:ASN:O	2:B:177:ASP:N	2.09	0.84
1:A:206:ARG:HG3	1:A:216:THR:HG21	1.57	0.84
1:A:132:ILE:HB	1:A:142:ILE:HB	1.61	0.82
2:B:365:VAL:O	2:B:369:THR:HG23	1.80	0.82
2:B:168:LEU:HD13	2:B:180:ILE:HG21	1.62	0.82
1:A:96:HIS:HD2	1:A:98:ALA:H	1.26	0.80
1:A:226:PRO:HB3	1:A:235:HIS:CE1	2.17	0.79
1:A:241:VAL:HB	1:A:314:VAL:HG23	1.64	0.79
2:B:106:VAL:HB	2:B:234:LEU:HB2	1.65	0.79
1:A:238:LYS:HB2	1:A:316:GLY:O	1.84	0.78
2:B:172:ARG:O	2:B:176:PRO:HD3	1.85	0.77
2:B:169:GLU:HA	2:B:173:LYS:HZ2	1.46	0.77
1:A:239:TRP:CZ2	1:A:316:GLY:HA3	2.20	0.77
1:A:289:LEU:HD22	1:A:289:LEU:H	1.50	0.76
2:B:56:TYR:HE2	2:B:126:LYS:HE2	1.51	0.76
1:A:31:ILE:O	1:A:35:VAL:HG23	1.85	0.76
2:B:241:VAL:HG22	2:B:350:LYS:HG3	1.66	0.75
2:B:163:SER:O	2:B:167:ILE:HG23	1.85	0.75
2:B:169:GLU:HB2	2:B:170:PRO:HD3	1.68	0.74
1:A:168:LEU:HD12	1:A:172:ARG:HH21	1.53	0.74
2:B:387:PRO:HG2	2:B:389:PHE:CE1	2.23	0.74
1:A:164:MET:HB3	1:A:182:GLN:NE2	2.03	0.72
2:B:169:GLU:O	2:B:173:LYS:HD3	1.87	0.72
1:A:418:ASN:O	1:A:420:PRO:HD3	1.89	0.72
1:A:244:ILE:CG2	1:A:310:LEU:HD22	2.20	0.72
2:B:420:PRO:HB2	2:B:423:VAL:HG23	1.72	0.72
1:A:312:GLU:OE1	1:A:312:GLU:HA	1.91	0.71
1:A:206:ARG:HG3	1:A:216:THR:CG2	2.20	0.71
1:A:475:GLN:HG3	1:A:476:LYS:N	2.05	0.71
2:B:279:LEU:HD23	2:B:299:ALA:HB1	1.72	0.71
2:B:332:GLN:NE2	2:B:424:LYS:HE2	2.05	0.71
2:B:277:ARG:HH11	2:B:281:LYS:HE3	1.54	0.71

*Continued on next page...*

*Continued from previous page...*

Atom-1	Atom-2	Interatomic distance (Å)	Clash overlap (Å)
1:A:219:LYS:O	1:A:222:GLN:HB2	1.91	0.70
2:B:56:TYR:CE2	2:B:126:LYS:HE2	2.26	0.70
1:A:331:LYS:HE2	1:A:334:GLN:HA	1.73	0.69
2:B:175:ASN:ND2	2:B:201:LYS:HD2	2.06	0.69
1:A:257:ILE:O	1:A:261:VAL:HG23	1.92	0.69
2:B:426:TRP:O	2:B:429:LEU:HB2	1.90	0.69
2:B:68:SER:O	2:B:69:THR:HG23	1.92	0.69
1:A:31:ILE:HG12	1:A:133:PRO:HG2	1.74	0.69
1:A:79:GLU:HA	1:A:82:LYS:HG2	1.72	0.69
1:A:492:GLU:HG2	1:A:530:LYS:HB2	1.74	0.69
1:A:253:THR:O	1:A:257:ILE:HG13	1.93	0.69
1:A:94:ILE:H	1:A:94:ILE:HD13	1.55	0.68
2:B:189:VAL:HG11	2:B:202:ILE:HD11	1.75	0.68
1:A:358:ARG:HD3	1:A:358:ARG:N	2.09	0.68
1:A:244:ILE:HG21	1:A:310:LEU:HD22	1.76	0.68
1:A:236:PRO:HA	3:A:999:UC1:H5	1.77	0.67
1:A:46:LYS:HE2	1:A:116:PHE:HB3	1.76	0.67
1:A:194:GLU:HG3	4:A:1004:HOH:O	1.94	0.66
2:B:308:GLU:O	2:B:311:LYS:HB2	1.96	0.66
1:A:218:ASP:CG	1:A:219:LYS:H	2.00	0.66
1:A:122:GLU:CD	1:A:122:GLU:H	1.99	0.65
1:A:516:GLU:O	1:A:520:GLN:HG3	1.95	0.65
1:A:32:LYS:NZ	1:A:135:ILE:HD11	2.10	0.65
2:B:238:LYS:O	2:B:240:THR:HG23	1.95	0.65
2:B:254:VAL:O	2:B:258:GLN:HG3	1.96	0.65
1:A:226:PRO:HB3	1:A:235:HIS:ND1	2.11	0.65
1:A:180:ILE:HG23	1:A:189:VAL:HG22	1.79	0.65
1:A:79:GLU:HB3	1:A:83:ARG:HH12	1.62	0.64
1:A:114:ALA:HB1	1:A:214:LEU:HD22	1.80	0.64
1:A:497:THR:O	1:A:535:TRP:HA	1.97	0.64
2:B:425:LEU:O	2:B:429:LEU:HD13	1.98	0.64
2:B:28:GLU:HG3	2:B:135:ILE:CD1	2.27	0.64
2:B:366:LYS:O	2:B:370:GLU:HG3	1.98	0.64
2:B:279:LEU:HG	2:B:302:GLU:OE2	1.97	0.63
2:B:178:ILE:HG12	2:B:191:SER:HB3	1.81	0.63
2:B:287:LYS:HE2	2:B:293:ILE:CD1	2.29	0.63
1:A:503:LEU:HA	1:A:506:ILE:HD12	1.80	0.62
2:B:211:ARG:HG3	2:B:212:TRP:CD1	2.35	0.62
1:A:311:LYS:O	1:A:311:LYS:HG2	2.00	0.62
2:B:277:ARG:HH11	2:B:281:LYS:CE	2.12	0.62
2:B:161:GLN:HA	2:B:161:GLN:NE2	2.14	0.62

*Continued on next page...*

*Continued from previous page...*

Atom-1	Atom-2	Interatomic distance (Å)	Clash overlap (Å)
1:A:37:ILE:O	1:A:40:GLU:HB3	1.99	0.62
1:A:149:LEU:HD11	1:A:159:ILE:HG21	1.79	0.62
2:B:169:GLU:CG	2:B:173:LYS:HZ3	2.10	0.62
2:B:266:TRP:HZ3	2:B:426:TRP:CD1	2.18	0.62
1:A:363:ASN:HA	1:A:511:ASP:OD1	1.99	0.62
1:A:293:ILE:N	1:A:293:ILE:HD12	2.14	0.62
1:A:330:GLN:HB2	1:A:338:THR:OG1	1.99	0.62
1:A:254:VAL:HB	1:A:289:LEU:O	2.00	0.61
1:A:90:VAL:HG12	1:A:158:ALA:HB2	1.82	0.61
1:A:253:THR:HA	1:A:291:GLU:O	2.01	0.61
2:B:94:ILE:HD11	2:B:181:TYR:HD2	1.66	0.61
1:A:516:GLU:HA	1:A:519:ASN:ND2	2.15	0.61
2:B:195:ILE:HG23	2:B:196:GLY:H	1.66	0.61
2:B:28:GLU:HG3	2:B:135:ILE:HD11	1.82	0.61
1:A:239:TRP:CE2	1:A:316:GLY:HA3	2.34	0.61
1:A:324:ASP:O	1:A:343:GLN:HG2	2.01	0.60
1:A:366:LYS:O	1:A:369:THR:HB	2.01	0.60
1:A:161:GLN:HG2	1:A:182:GLN:NE2	2.17	0.60
2:B:162:SER:O	2:B:166:LYS:HB2	2.01	0.60
2:B:175:ASN:N	2:B:176:PRO:CD	2.65	0.60
2:B:195:ILE:O	2:B:198:HIS:HB3	2.01	0.60
1:A:21:VAL:CG1	1:A:59:PRO:HD3	2.32	0.60
2:B:418:ASN:HB3	4:B:1043:HOH:O	2.02	0.60
1:A:90:VAL:O	1:A:91:GLN:C	2.39	0.59
1:A:64:LYS:O	1:A:64:LYS:HD2	2.02	0.59
2:B:248:GLU:HG3	2:B:307:ARG:NH2	2.17	0.59
2:B:65:LYS:HD2	2:B:72:ARG:HD2	1.84	0.59
1:A:346:PHE:N	1:A:346:PHE:CD2	2.67	0.59
1:A:333:GLY:CA	1:A:336:GLN:HE21	2.09	0.59
1:A:370:GLU:O	1:A:374:LYS:HG3	2.01	0.59
2:B:339:TYR:CE1	2:B:352:GLY:HA3	2.37	0.59
1:A:330:GLN:HB2	1:A:338:THR:HG1	1.68	0.59
2:B:7:THR:HG22	2:B:119:PRO:HG2	1.83	0.59
2:B:46:LYS:HE2	2:B:116:PHE:CD1	2.38	0.59
1:A:139:THR:HB	1:A:140:PRO:HD2	1.85	0.59
1:A:506:ILE:HG12	1:A:533:LEU:HB3	1.84	0.59
2:B:195:ILE:HG23	2:B:196:GLY:N	2.18	0.58
2:B:361:HIS:HD2	2:B:361:HIS:O	1.86	0.58
2:B:361:HIS:CD2	2:B:361:HIS:C	2.77	0.58
1:A:252:TRP:NE1	1:A:295:LEU:HD11	2.18	0.58
1:A:46:LYS:HE2	1:A:116:PHE:CB	2.33	0.58

*Continued on next page...*

*Continued from previous page...*

Atom-1	Atom-2	Interatomic distance (Å)	Clash overlap (Å)
2:B:65:LYS:HE3	2:B:110:ASP:OD1	2.03	0.58
2:B:162:SER:HA	2:B:165:THR:CG2	2.33	0.58
1:A:408:ALA:HB3	2:B:393:ILE:HG13	1.86	0.58
1:A:235:HIS:HB2	1:A:238:LYS:O	2.02	0.58
2:B:195:ILE:HD11	2:B:199:ARG:NE	2.19	0.58
1:A:246:LEU:HD22	1:A:260:LEU:HD11	1.85	0.58
2:B:421:PRO:O	2:B:425:LEU:HD22	2.04	0.58
2:B:205:LEU:C	2:B:205:LEU:HD13	2.24	0.58
1:A:474:ASN:O	1:A:478:GLU:HG3	2.04	0.57
2:B:323:LYS:NZ	2:B:323:LYS:HB2	2.19	0.57
1:A:289:LEU:CD2	1:A:289:LEU:H	2.17	0.57
1:A:77:PHE:CD2	1:A:80:LEU:HD23	2.38	0.57
2:B:235:HIS:O	2:B:238:LYS:HG2	2.05	0.57
1:A:358:ARG:HH11	1:A:358:ARG:H	1.51	0.57
2:B:98:ALA:HA	2:B:101:LYS:HZ3	1.69	0.57
1:A:21:VAL:HG11	1:A:59:PRO:HD3	1.87	0.57
2:B:94:ILE:HD11	2:B:181:TYR:CD2	2.39	0.57
1:A:469:LEU:HD12	1:A:477:THR:HG22	1.87	0.57
2:B:79:GLU:O	2:B:83:ARG:HG3	2.05	0.57
2:B:270:ILE:HG12	2:B:346:PHE:HB3	1.86	0.57
1:A:376:THR:O	1:A:380:ILE:HG12	2.04	0.57
1:A:380:ILE:HD11	1:A:386:THR:HB	1.86	0.57
1:A:169:GLU:HB3	1:A:170:PRO:HD3	1.85	0.57
2:B:267:ALA:HB2	2:B:426:TRP:CZ3	2.40	0.56
2:B:376:THR:HG23	2:B:387:PRO:HD2	1.86	0.56
2:B:418:ASN:CB	4:B:1043:HOH:O	2.54	0.56
2:B:171:PHE:CD2	2:B:205:LEU:HD23	2.40	0.56
2:B:170:PRO:O	2:B:174:GLN:HG3	2.04	0.56
2:B:183:TYR:CE1	2:B:184:MET:HG2	2.41	0.56
1:A:245:VAL:O	1:A:245:VAL:HG23	2.06	0.56
1:A:266:TRP:HZ3	1:A:270:ILE:HD12	1.70	0.56
2:B:109:LEU:HD11	2:B:205:LEU:HD12	1.88	0.56
2:B:175:ASN:CB	2:B:178:ILE:HD12	2.36	0.56
2:B:161:GLN:O	2:B:165:THR:HG22	2.05	0.56
1:A:19:PRO:O	1:A:56:TYR:HA	2.05	0.56
1:A:46:LYS:HB3	1:A:46:LYS:HZ3	1.68	0.56
2:B:27:THR:CG2	2:B:29:GLU:HG2	2.36	0.56
1:A:371:ALA:O	1:A:375:ILE:HG13	2.05	0.55
2:B:103:LYS:HE2	2:B:179:VAL:HG23	1.87	0.55
2:B:326:ILE:O	2:B:341:ILE:HA	2.06	0.55
1:A:358:ARG:CD	1:A:358:ARG:H	2.16	0.55

*Continued on next page...*

*Continued from previous page...*

Atom-1	Atom-2	Interatomic distance (Å)	Clash overlap (Å)
1:A:125:ARG:HD3	1:A:147:ASN:HA	1.89	0.55
1:A:149:LEU:HD21	1:A:159:ILE:HG22	1.89	0.55
2:B:189:VAL:HG11	2:B:202:ILE:CD1	2.37	0.55
1:A:170:PRO:O	1:A:174:GLN:HG3	2.06	0.55
2:B:130:PHE:CZ	2:B:144:TYR:HB2	2.41	0.55
2:B:65:LYS:O	2:B:66:LYS:C	2.45	0.55
1:A:108:VAL:HG13	1:A:223:LYS:HB2	1.88	0.55
2:B:175:ASN:HB3	2:B:178:ILE:HD12	1.87	0.55
1:A:32:LYS:HZ2	1:A:135:ILE:HD11	1.69	0.55
1:A:164:MET:O	1:A:168:LEU:HG	2.08	0.54
1:A:218:ASP:CG	1:A:219:LYS:N	2.61	0.54
2:B:339:TYR:CZ	2:B:352:GLY:HA3	2.42	0.54
2:B:189:VAL:CG1	2:B:202:ILE:HD11	2.36	0.54
2:B:57:ASN:HD22	2:B:143:ARG:NH1	2.05	0.54
1:A:395:LYS:HD3	1:A:414:TRP:CZ2	2.41	0.54
2:B:319:TYR:OH	2:B:385:LYS:HD3	2.07	0.54
2:B:64:LYS:HE2	2:B:71:TRP:CE2	2.42	0.54
1:A:129:ALA:HB1	1:A:143:ARG:HH12	1.72	0.54
1:A:161:GLN:HA	1:A:182:GLN:HE21	1.72	0.54
1:A:79:GLU:HB3	1:A:83:ARG:NH1	2.22	0.54
1:A:41:MET:HB3	1:A:47:ILE:HG23	1.89	0.54
2:B:271:TYR:CD1	2:B:309:ILE:HG22	2.43	0.54
1:A:360:ALA:HA	1:A:514:GLU:HB3	1.88	0.54
1:A:117:SER:CB	1:A:214:LEU:HD23	2.38	0.54
2:B:162:SER:HA	2:B:165:THR:HG22	1.89	0.54
2:B:175:ASN:H	2:B:176:PRO:HD3	1.72	0.54
2:B:344:GLU:CB	2:B:347:LYS:HE3	2.38	0.54
1:A:91:GLN:OE1	2:B:140:PRO:HA	2.07	0.54
1:A:12:LEU:HD11	1:A:127:TYR:CE1	2.43	0.53
1:A:17:ASP:O	1:A:83:ARG:HD3	2.08	0.53
2:B:287:LYS:HE2	2:B:293:ILE:HD12	1.88	0.53
2:B:271:TYR:HB3	2:B:309:ILE:HG21	1.90	0.53
2:B:178:ILE:HG12	2:B:191:SER:CB	2.38	0.53
1:A:161:GLN:HA	1:A:182:GLN:NE2	2.24	0.53
2:B:103:LYS:HD2	2:B:191:SER:HA	1.89	0.53
2:B:173:LYS:N	2:B:173:LYS:HD2	2.23	0.53
1:A:139:THR:HB	1:A:140:PRO:CD	2.39	0.53
1:A:63:ILE:HD12	1:A:63:ILE:C	2.28	0.53
2:B:98:ALA:CA	2:B:101:LYS:HZ3	2.21	0.53
1:A:85:GLN:O	1:A:154:LYS:NZ	2.41	0.53
2:B:369:THR:HG22	2:B:398:TRP:CZ3	2.43	0.53

*Continued on next page...*

*Continued from previous page...*

Atom-1	Atom-2	Interatomic distance (Å)	Clash overlap (Å)
1:A:169:GLU:O	1:A:173:LYS:HG2	2.09	0.53
2:B:115:TYR:HB3	2:B:149:LEU:HB2	1.91	0.52
1:A:27:THR:O	1:A:31:ILE:HG13	2.10	0.52
1:A:125:ARG:CD	1:A:147:ASN:HA	2.40	0.52
1:A:46:LYS:CB	1:A:46:LYS:HZ3	2.23	0.52
1:A:440:PHE:CE1	1:A:489:SER:HB3	2.45	0.52
2:B:172:ARG:O	2:B:176:PRO:CD	2.55	0.52
2:B:27:THR:HG22	2:B:28:GLU:N	2.24	0.52
1:A:447:ASN:HB3	1:A:450:THR:OG1	2.09	0.52
2:B:175:ASN:N	2:B:176:PRO:HD3	2.25	0.52
1:A:115:TYR:C	1:A:117:SER:H	2.11	0.52
1:A:58:THR:CG2	1:A:59:PRO:HD2	2.40	0.52
1:A:114:ALA:O	1:A:117:SER:HB2	2.10	0.52
2:B:66:LYS:O	2:B:67:ASP:CB	2.57	0.52
2:B:60:VAL:HG12	2:B:75:VAL:HG22	1.90	0.52
1:A:7:THR:HG22	1:A:119:PRO:HB2	1.92	0.52
2:B:350:LYS:HG2	2:B:351:THR:N	2.24	0.52
2:B:27:THR:O	2:B:31:ILE:HG13	2.09	0.52
1:A:328:GLU:HG2	1:A:330:GLN:NE2	2.25	0.52
2:B:266:TRP:CZ3	2:B:426:TRP:CD1	2.97	0.52
1:A:181:TYR:CD1	3:A:999:UC1:HF3	2.45	0.52
2:B:29:GLU:CG	2:B:30:LYS:N	2.73	0.51
2:B:98:ALA:HA	2:B:101:LYS:NZ	2.24	0.51
2:B:413:GLU:OE2	2:B:413:GLU:HA	2.10	0.51
1:A:330:GLN:NE2	1:A:340:GLN:OE1	2.42	0.51
1:A:433:PRO:HG3	1:A:532:TYR:CE2	2.46	0.51
2:B:13:LYS:HE3	2:B:84:THR:O	2.09	0.51
2:B:105:SER:HA	2:B:234:LEU:O	2.11	0.51
1:A:3:SER:HB3	1:A:5:ILE:HG13	1.92	0.51
1:A:328:GLU:HG2	1:A:330:GLN:HE21	1.76	0.51
2:B:169:GLU:HG2	2:B:173:LYS:NZ	2.15	0.51
2:B:238:LYS:O	2:B:240:THR:N	2.44	0.51
1:A:409:THR:O	2:B:364:ASP:HB2	2.11	0.51
2:B:169:GLU:HA	2:B:173:LYS:NZ	2.22	0.51
1:A:232:TYR:N	1:A:232:TYR:CD1	2.79	0.51
1:A:416:PHE:CD1	1:A:417:VAL:N	2.79	0.51
1:A:358:ARG:HH11	1:A:358:ARG:N	2.09	0.51
1:A:202:ILE:HG22	1:A:203:GLU:N	2.26	0.51
2:B:210:LEU:C	2:B:212:TRP:H	2.14	0.50
2:B:57:ASN:ND2	2:B:131:THR:OG1	2.45	0.50
2:B:169:GLU:C	2:B:173:LYS:HD3	2.32	0.50

*Continued on next page...*

*Continued from previous page...*

Atom-1	Atom-2	Interatomic distance (Å)	Clash overlap (Å)
1:A:89:GLU:HG3	1:A:89:GLU:O	2.11	0.50
1:A:33:ALA:O	1:A:36:GLU:HB3	2.10	0.50
1:A:312:GLU:OE1	1:A:313:PRO:HD2	2.11	0.50
1:A:355:ALA:O	1:A:357:MET:N	2.44	0.50
2:B:332:GLN:HE22	2:B:424:LYS:CD	2.24	0.50
2:B:160:PHE:CD1	2:B:160:PHE:O	2.65	0.50
1:A:368:LEU:HD12	1:A:423:VAL:HG21	1.94	0.50
1:A:283:LEU:O	1:A:286:THR:HG23	2.12	0.49
1:A:408:ALA:HB3	2:B:393:ILE:CG1	2.42	0.49
1:A:377:THR:O	1:A:381:VAL:HG23	2.11	0.49
1:A:120:LEU:O	1:A:121:ASP:C	2.49	0.49
1:A:248:GLU:C	1:A:249:LYS:HG3	2.32	0.49
1:A:358:ARG:O	1:A:358:ARG:HG2	2.12	0.49
2:B:277:ARG:O	2:B:281:LYS:HG3	2.12	0.49
1:A:8:VAL:O	1:A:121:ASP:HB2	2.11	0.49
2:B:350:LYS:HE2	2:B:378:GLU:OE1	2.12	0.49
2:B:393:ILE:O	2:B:416:PHE:HB3	2.12	0.49
1:A:96:HIS:CD2	1:A:98:ALA:H	2.18	0.49
1:A:5:ILE:HD13	1:A:167:ILE:HD11	1.95	0.48
1:A:38:CYS:HB3	1:A:144:TYR:CE1	2.49	0.48
1:A:440:PHE:CZ	1:A:489:SER:HB3	2.49	0.48
1:A:122:GLU:CD	1:A:122:GLU:N	2.67	0.48
2:B:29:GLU:HG3	2:B:30:LYS:N	2.28	0.48
1:A:500:GLN:O	1:A:503:LEU:HB3	2.13	0.48
1:A:402:TRP:CD1	1:A:402:TRP:C	2.85	0.48
1:A:483:TYR:O	1:A:487:GLN:HG3	2.14	0.48
1:A:363:ASN:HB2	1:A:511:ASP:OD2	2.12	0.48
2:B:196:GLY:O	2:B:200:THR:HG23	2.13	0.48
1:A:12:LEU:HD11	1:A:127:TYR:CZ	2.49	0.48
2:B:10:VAL:HG12	2:B:11:LYS:N	2.29	0.48
1:A:90:VAL:CG2	1:A:90:VAL:O	2.61	0.48
2:B:101:LYS:O	2:B:236:PRO:HB2	2.14	0.48
1:A:229:TRP:HB2	1:A:234:LEU:HD22	1.96	0.48
1:A:194:GLU:HB2	1:A:197:GLN:OE1	2.12	0.48
1:A:516:GLU:O	1:A:519:ASN:HB2	2.14	0.48
1:A:53:GLU:HG3	1:A:53:GLU:O	2.14	0.48
1:A:234:LEU:CD1	1:A:234:LEU:N	2.77	0.47
1:A:116:PHE:HA	1:A:148:VAL:HG21	1.96	0.47
1:A:118:VAL:HB	1:A:149:LEU:HD22	1.96	0.47
1:A:260:LEU:HG	1:A:264:LEU:HD12	1.96	0.47
2:B:112:GLY:HA2	2:B:115:TYR:CE2	2.49	0.47

*Continued on next page...*

*Continued from previous page...*

Atom-1	Atom-2	Interatomic distance (Å)	Clash overlap (Å)
1:A:77:PHE:O	1:A:78:ARG:C	2.52	0.47
1:A:431:LYS:HE3	1:A:431:LYS:HA	1.96	0.47
1:A:266:TRP:CZ3	1:A:270:ILE:HD12	2.49	0.47
1:A:289:LEU:N	1:A:289:LEU:HD22	2.24	0.47
1:A:88:TRP:CE3	1:A:88:TRP:HA	2.50	0.47
1:A:475:GLN:HG3	1:A:476:LYS:H	1.79	0.47
2:B:344:GLU:HB3	2:B:347:LYS:NZ	2.30	0.47
2:B:202:ILE:O	2:B:205:LEU:HB3	2.15	0.47
1:A:108:VAL:O	1:A:108:VAL:HG13	2.15	0.47
1:A:129:ALA:HB1	1:A:143:ARG:NH1	2.30	0.47
2:B:255:ASN:HB2	2:B:289:LEU:HG	1.95	0.47
1:A:46:LYS:HE2	1:A:116:PHE:CG	2.49	0.47
1:A:143:ARG:HH11	1:A:143:ARG:HG2	1.80	0.47
2:B:344:GLU:HB3	2:B:347:LYS:HE3	1.95	0.47
1:A:429:LEU:CD1	1:A:506:ILE:HA	2.45	0.47
2:B:208:HIS:O	2:B:211:ARG:HG2	2.15	0.47
1:A:90:VAL:O	1:A:90:VAL:HG23	2.14	0.47
2:B:260:LEU:HG	2:B:264:LEU:HD12	1.97	0.47
1:A:240:THR:HG22	1:A:315:HIS:HB3	1.96	0.47
2:B:101:LYS:HD3	2:B:382:ILE:HG23	1.96	0.47
1:A:278:GLN:O	1:A:282:LEU:HD13	2.15	0.47
1:A:81:ASN:C	1:A:83:ARG:H	2.18	0.46
2:B:206:ARG:O	2:B:210:LEU:N	2.42	0.46
1:A:420:PRO:HA	1:A:421:PRO:C	2.34	0.46
2:B:332:GLN:NE2	2:B:424:LYS:CE	2.76	0.46
2:B:308:GLU:OE1	2:B:311:LYS:HD2	2.14	0.46
2:B:244:ILE:HG21	2:B:426:TRP:CH2	2.50	0.46
1:A:103:LYS:O	1:A:236:PRO:HB2	2.15	0.46
1:A:515:SER:HB3	1:A:518:VAL:CG2	2.45	0.46
2:B:116:PHE:HA	2:B:148:VAL:HG21	1.98	0.46
1:A:241:VAL:HG21	1:A:270:ILE:HD13	1.97	0.46
2:B:162:SER:CA	2:B:165:THR:HG22	2.45	0.46
1:A:240:THR:HA	1:A:315:HIS:HA	1.96	0.46
1:A:405:TYR:O	2:B:331:LYS:HD3	2.15	0.46
2:B:97:PRO:O	2:B:99:GLY:N	2.49	0.46
2:B:21:VAL:HB	2:B:59:PRO:HD3	1.97	0.46
1:A:372:VAL:HG11	1:A:411:ILE:HG23	1.98	0.46
2:B:168:LEU:HD22	2:B:180:ILE:HD13	1.97	0.46
1:A:226:PRO:HA	1:A:234:LEU:O	2.16	0.46
1:A:292:VAL:C	1:A:293:ILE:HD12	2.36	0.46
2:B:97:PRO:C	2:B:99:GLY:N	2.68	0.46

*Continued on next page...*



*Continued from previous page...*

Atom-1	Atom-2	Interatomic distance (Å)	Clash overlap (Å)
2:B:40:GLU:O	2:B:43:LYS:HB2	2.16	0.46
1:A:254:VAL:O	1:A:255:ASN:C	2.54	0.45
2:B:332:GLN:HE22	2:B:424:LYS:HD3	1.82	0.45
1:A:80:LEU:HD12	1:A:80:LEU:O	2.17	0.45
2:B:116:PHE:HA	2:B:148:VAL:CG2	2.46	0.45
1:A:175:ASN:HA	1:A:176:PRO:HD2	1.70	0.45
1:A:125:ARG:NE	1:A:147:ASN:HA	2.31	0.45
1:A:489:SER:OG	1:A:493:VAL:HG21	2.16	0.45
1:A:496:VAL:HA	1:A:534:ALA:O	2.16	0.45
1:A:79:GLU:OE2	1:A:82:LYS:HD3	2.16	0.45
1:A:452:LEU:CD1	1:A:470:THR:HG22	2.46	0.45
1:A:171:PHE:O	1:A:175:ASN:ND2	2.49	0.45
2:B:169:GLU:O	2:B:173:LYS:CD	2.62	0.45
2:B:279:LEU:HA	2:B:282:LEU:HD12	1.99	0.45
1:A:218:ASP:OD2	1:A:220:LYS:HG3	2.16	0.45
1:A:125:ARG:HG2	1:A:146:TYR:O	2.17	0.45
1:A:76:ASP:OD2	1:A:78:ARG:HG3	2.16	0.45
1:A:498:ASP:HA	1:A:536:VAL:O	2.16	0.45
2:B:27:THR:HG21	2:B:29:GLU:OE2	2.17	0.45
1:A:271:TYR:HA	1:A:272:PRO:HD3	1.70	0.45
1:A:246:LEU:HB2	1:A:307:ARG:NH1	2.32	0.45
2:B:344:GLU:HB2	2:B:347:LYS:HE3	1.99	0.45
1:A:218:ASP:O	1:A:222:GLN:HG2	2.18	0.45
2:B:206:ARG:O	2:B:207:GLN:C	2.54	0.44
1:A:293:ILE:CD1	1:A:293:ILE:N	2.79	0.44
1:A:447:ASN:O	1:A:451:LYS:N	2.50	0.44
2:B:297:GLU:HG2	4:B:1035:HOH:O	2.17	0.44
2:B:287:LYS:HE2	2:B:293:ILE:HD11	1.98	0.44
2:B:238:LYS:HG3	2:B:239:TRP:N	2.32	0.44
2:B:43:LYS:C	2:B:45:GLY:H	2.20	0.44
2:B:279:LEU:CD2	2:B:299:ALA:HB1	2.45	0.44
2:B:356:ARG:HB2	2:B:367:GLN:HG2	1.98	0.44
2:B:368:LEU:O	2:B:371:ALA:HB3	2.18	0.44
1:A:418:ASN:C	1:A:420:PRO:HD3	2.37	0.44
1:A:206:ARG:NH2	1:A:216:THR:O	2.51	0.44
1:A:379:SER:HB3	1:A:387:PRO:HD3	1.99	0.44
1:A:386:THR:HA	1:A:387:PRO:HD3	1.74	0.44
2:B:332:GLN:HE21	2:B:424:LYS:HE2	1.83	0.43
1:A:237:ASP:N	1:A:237:ASP:OD2	2.48	0.43
1:A:116:PHE:HE1	1:A:146:TYR:HE1	1.65	0.43
2:B:203:GLU:OE2	2:B:206:ARG:NH2	2.52	0.43

*Continued on next page...*

*Continued from previous page...*

Atom-1	Atom-2	Interatomic distance (Å)	Clash overlap (Å)
1:A:452:LEU:HD13	1:A:469:LEU:O	2.18	0.43
1:A:57:ASN:HA	1:A:129:ALA:O	2.18	0.43
1:A:301:LEU:O	1:A:304:ALA:N	2.50	0.43
2:B:361:HIS:CD2	2:B:361:HIS:O	2.66	0.43
2:B:41:MET:HE2	2:B:47:ILE:HG23	1.99	0.43
1:A:379:SER:CB	1:A:387:PRO:HD3	2.49	0.43
1:A:416:PHE:HE1	1:A:422:LEU:HD22	1.83	0.43
2:B:242:GLN:HB3	2:B:243:PRO:HD2	2.00	0.43
1:A:229:TRP:O	1:A:230:MET:C	2.56	0.43
1:A:380:ILE:HD13	1:A:385:LYS:O	2.18	0.43
1:A:425:LEU:HD13	1:A:428:GLN:NE2	2.34	0.43
1:A:176:PRO:C	1:A:178:ILE:H	2.21	0.43
2:B:134:SER:CB	2:B:139:THR:HB	2.48	0.43
1:A:58:THR:HG23	1:A:59:PRO:HD2	1.99	0.43
2:B:279:LEU:C	2:B:281:LYS:H	2.21	0.43
1:A:248:GLU:O	1:A:249:LYS:HG3	2.19	0.43
1:A:81:ASN:C	1:A:83:ARG:N	2.72	0.43
1:A:517:LEU:O	1:A:517:LEU:HD23	2.19	0.42
1:A:235:HIS:O	1:A:318:TYR:HE2	2.01	0.42
1:A:63:ILE:O	1:A:63:ILE:HD12	2.19	0.42
1:A:331:LYS:CE	1:A:334:GLN:HA	2.45	0.42
2:B:57:ASN:HD22	2:B:143:ARG:HH11	1.66	0.42
1:A:32:LYS:HD3	1:A:32:LYS:HA	1.93	0.42
1:A:486:LEU:HB3	1:A:524:GLN:HB3	2.00	0.42
1:A:259:LYS:O	1:A:263:LYS:HG3	2.19	0.42
1:A:335:GLY:HA2	1:A:367:GLN:OE1	2.19	0.42
1:A:110:ASP:CB	1:A:217:PRO:HG3	2.34	0.42
1:A:59:PRO:HG2	1:A:76:ASP:HB3	2.01	0.42
1:A:452:LEU:HD11	1:A:470:THR:HG22	2.02	0.42
1:A:402:TRP:CH2	2:B:362:THR:HA	2.54	0.42
2:B:168:LEU:O	2:B:169:GLU:C	2.57	0.42
2:B:103:LYS:HD2	2:B:191:SER:CA	2.49	0.42
2:B:7:THR:HG22	2:B:119:PRO:O	2.20	0.42
1:A:108:VAL:CG1	1:A:223:LYS:HB2	2.49	0.42
2:B:271:TYR:HB2	2:B:274:ILE:HG13	2.02	0.42
1:A:281:LYS:O	1:A:284:ARG:HG3	2.19	0.42
2:B:68:SER:HB3	2:B:70:LYS:O	2.19	0.42
1:A:368:LEU:HD23	1:A:368:LEU:O	2.19	0.42
1:A:135:ILE:N	1:A:135:ILE:HD12	2.35	0.41
1:A:21:VAL:HG13	1:A:59:PRO:HD3	2.01	0.41
1:A:48:SER:O	1:A:145:GLN:HG2	2.20	0.41

*Continued on next page...*

*Continued from previous page...*

Atom-1	Atom-2	Interatomic distance (Å)	Clash overlap (Å)
1:A:81:ASN:O	1:A:83:ARG:N	2.53	0.41
1:A:114:ALA:CB	1:A:214:LEU:HD22	2.48	0.41
1:A:319:TYR:CE2	1:A:343:GLN:NE2	2.88	0.41
1:A:446:ALA:HB2	1:A:477:THR:HG21	2.02	0.41
1:A:331:LYS:HG2	1:A:333:GLY:O	2.21	0.41
2:B:274:ILE:HD11	2:B:310:LEU:HD21	2.01	0.41
1:A:49:LYS:HA	1:A:144:TYR:CD2	2.55	0.41
1:A:161:GLN:O	1:A:162:SER:C	2.58	0.41
2:B:99:GLY:HA2	2:B:102:LYS:HE3	2.02	0.41
1:A:419:THR:HG22	1:A:419:THR:O	2.20	0.41
1:A:163:SER:O	1:A:164:MET:C	2.58	0.41
1:A:167:ILE:O	1:A:170:PRO:HD2	2.21	0.41
1:A:329:ILE:HD11	1:A:375:ILE:HD12	2.01	0.41
2:B:8:VAL:HG23	2:B:9:PRO:HD2	2.03	0.41
1:A:522:ILE:O	1:A:526:ILE:HG13	2.21	0.41
1:A:206:ARG:HG2	1:A:206:ARG:HH11	1.86	0.41
1:A:507:GLN:OE1	2:B:421:PRO:HG3	2.21	0.41
1:A:340:GLN:CB	1:A:351:THR:HG22	2.51	0.41
1:A:276:VAL:O	1:A:280:CSD:HB3	2.20	0.41
2:B:169:GLU:HB2	2:B:170:PRO:CD	2.46	0.41
2:B:46:LYS:HE2	2:B:116:PHE:HD1	1.85	0.41
1:A:306:ASN:O	1:A:308:GLU:N	2.54	0.41
1:A:523:GLU:O	1:A:527:LYS:HG3	2.21	0.41
1:A:442:VAL:HB	1:A:481:ALA:HB1	2.03	0.41
2:B:244:ILE:HG13	2:B:426:TRP:CZ2	2.56	0.40
1:A:434:ILE:CD1	1:A:530:LYS:HB3	2.51	0.40
2:B:271:TYR:HB3	2:B:309:ILE:CG2	2.51	0.40
2:B:281:LYS:C	2:B:283:LEU:N	2.74	0.40
1:A:469:LEU:HB2	1:A:472:THR:HG21	2.02	0.40
2:B:305:GLU:O	2:B:309:ILE:HG13	2.21	0.40
2:B:11:LYS:N	2:B:85:GLN:OE1	2.54	0.40
1:A:486:LEU:CD1	1:A:521:ILE:HG23	2.52	0.40
2:B:377:THR:HG22	2:B:410:TRP:HZ2	1.86	0.40
1:A:235:HIS:O	1:A:318:TYR:CE2	2.75	0.40
2:B:101:LYS:O	2:B:236:PRO:CB	2.69	0.40
2:B:13:LYS:HB2	2:B:16:MET:HG3	2.03	0.40
1:A:357:MET:HG2	1:A:357:MET:O	2.21	0.40
2:B:265:ASN:O	2:B:268:SER:OG	2.24	0.40

There are no symmetry-related clashes.

## 5.3 Torsion angles

### 5.3.1 Protein backbone

In the following table, the Percentiles column shows the percent Ramachandran outliers of the chain as a percentile score with respect to all X-ray entries followed by that with respect to entries of similar resolution.

The Analysed column shows the number of residues for which the backbone conformation was analysed, and the total number of residues.

Mol	Chain	Analysed	Favoured	Allowed	Outliers	Percentiles	
1	A	525/560 (94%)	448 (85%)	59 (11%)	18 (3%)	5	7
2	B	399/440 (91%)	353 (88%)	34 (8%)	12 (3%)	5	8
All	All	924/1000 (92%)	801 (87%)	93 (10%)	30 (3%)	5	8

All (30) Ramachandran outliers are listed below:

Mol	Chain	Res	Type
1	A	356	ARG
2	B	67	ASP
2	B	69	THR
2	B	176	PRO
2	B	239	TRP
1	A	112	GLY
1	A	135	ILE
1	A	217	PRO
1	A	222	GLN
1	A	345	PRO
2	B	66	LYS
2	B	85	GLN
1	A	4	PRO
1	A	91	GLN
1	A	401	TRP
2	B	44	GLU
2	B	65	LYS
1	A	82	LYS
1	A	85	GLN
1	A	177	ASP
1	A	307	ARG
1	A	361	HIS
2	B	98	ALA
2	B	175	ASN
2	B	211	ARG

*Continued on next page...*

*Continued from previous page...*

Mol	Chain	Res	Type
1	A	111	VAL
1	A	116	PHE
1	A	412	PRO
1	A	15	GLY
2	B	55	PRO

### 5.3.2 Protein sidechains ⓘ

In the following table, the Percentiles column shows the percent sidechain outliers of the chain as a percentile score with respect to all X-ray entries followed by that with respect to entries of similar resolution.

The Analysed column shows the number of residues for which the sidechain conformation was analysed, and the total number of residues.

Mol	Chain	Analysed	Rotameric	Outliers	Percentiles	
1	A	474/498 (95%)	439 (93%)	35 (7%)	17	34
2	B	368/400 (92%)	354 (96%)	14 (4%)	40	68
All	All	842/898 (94%)	793 (94%)	49 (6%)	25	49

All (49) residues with a non-rotameric sidechain are listed below:

Mol	Chain	Res	Type
1	A	4	PRO
1	A	32	LYS
1	A	64	LYS
1	A	89	GLU
1	A	92	LEU
1	A	94	ILE
1	A	120	LEU
1	A	136	ASN
1	A	149	LEU
1	A	161	GLN
1	A	175	ASN
1	A	184	MET
1	A	202	ILE
1	A	205	LEU
1	A	210	LEU
1	A	232	TYR
1	A	238	LYS
1	A	312	GLU

*Continued on next page...*

*Continued from previous page...*

Mol	Chain	Res	Type
1	A	314	VAL
1	A	324	ASP
1	A	340	GLN
1	A	346	PHE
1	A	357	MET
1	A	358	ARG
1	A	361	HIS
1	A	368	LEU
1	A	386	THR
1	A	402	TRP
1	A	404	GLU
1	A	431	LYS
1	A	452	LEU
1	A	475	GLN
1	A	496	VAL
1	A	501	TYR
1	A	517	LEU
2	B	22	LYS
2	B	40	GLU
2	B	55	PRO
2	B	73	LYS
2	B	176	PRO
2	B	177	ASP
2	B	233	GLU
2	B	238	LYS
2	B	243	PRO
2	B	283	LEU
2	B	364	ASP
2	B	368	LEU
2	B	405	TYR
2	B	425	LEU

Some sidechains can be flipped to improve hydrogen bonding and reduce clashes. All (33) such sidechains are listed below:

Mol	Chain	Res	Type
1	A	57	ASN
1	A	96	HIS
1	A	136	ASN
1	A	147	ASN
1	A	174	GLN
1	A	175	ASN
1	A	182	GLN

*Continued on next page...*

*Continued from previous page...*

Mol	Chain	Res	Type
1	A	255	ASN
1	A	278	GLN
1	A	332	GLN
1	A	336	GLN
1	A	361	HIS
1	A	394	GLN
1	A	428	GLN
1	A	475	GLN
1	A	487	GLN
1	A	500	GLN
1	A	519	ASN
2	B	57	ASN
2	B	161	GLN
2	B	175	ASN
2	B	182	GLN
2	B	197	GLN
2	B	208	HIS
2	B	235	HIS
2	B	330	GLN
2	B	332	GLN
2	B	336	GLN
2	B	340	GLN
2	B	361	HIS
2	B	394	GLN
2	B	407	GLN
2	B	428	GLN

### 5.3.3 RNA ⓘ

There are no RNA molecules in this entry.

## 5.4 Non-standard residues in protein, DNA, RNA chains ⓘ

2 non-standard protein/DNA/RNA residues are modelled in this entry.

In the following table, the Counts columns list the number of bonds (or angles) for which Mogul statistics could be retrieved, the number of bonds (or angles) that are observed in the model and the number of bonds (or angles) that are defined in the chemical component dictionary. The Link column lists molecule types, if any, to which the group is linked. The Z score for a bond length (or angle) is the number of standard deviations the observed value is removed from the expected value. A bond length (or angle) with  $|Z| > 2$  is considered an outlier worth inspection. RMSZ is the root-mean-square of all Z scores of the bond lengths (or angles).

Mol	Type	Chain	Res	Link	Bond lengths			Bond angles		
					Counts	RMSZ	# Z  > 2	Counts	RMSZ	# Z  > 2
1	CSD	A	188	1	3,7,8	0.90	0	3,8,10	1.27	0
1	CSD	A	280	1	3,7,8	0.86	0	3,8,10	4.74	1 (33%)

In the following table, the Chirals column lists the number of chiral outliers, the number of chiral centers analysed, the number of these observed in the model and the number defined in the chemical component dictionary. Similar counts are reported in the Torsion and Rings columns. '-' means no outliers of that kind were identified.

Mol	Type	Chain	Res	Link	Chirals	Torsions	Rings
1	CSD	A	188	1	-	0/2/6/8	0/0/0/0
1	CSD	A	280	1	-	1/2/6/8	0/0/0/0

There are no bond length outliers.

All (1) bond angle outliers are listed below:

Mol	Chain	Res	Type	Atoms	Z	Observed(°)	Ideal(°)
1	A	280	CSD	OD1-SG-CB	8.04	118.81	105.40

There are no chirality outliers.

All (1) torsion outliers are listed below:

Mol	Chain	Res	Type	Atoms
1	A	280	CSD	CA-CB-SG-OD1

There are no ring outliers.

1 monomer is involved in 1 short contact:

Mol	Chain	Res	Type	Clashes	Symm-Clashes
1	A	280	CSD	1	0

## 5.5 Carbohydrates [i](#)

There are no carbohydrates in this entry.

## 5.6 Ligand geometry [i](#)

1 ligand is modelled in this entry.

In the following table, the Counts columns list the number of bonds (or angles) for which Mogul



statistics could be retrieved, the number of bonds (or angles) that are observed in the model and the number of bonds (or angles) that are defined in the chemical component dictionary. The Link column lists molecule types, if any, to which the group is linked. The Z score for a bond length (or angle) is the number of standard deviations the observed value is removed from the expected value. A bond length (or angle) with  $|Z| > 2$  is considered an outlier worth inspection. RMSZ is the root-mean-square of all Z scores of the bond lengths (or angles).

Mol	Type	Chain	Res	Link	Bond lengths			Bond angles		
					Counts	RMSZ	# $ Z  > 2$	Counts	RMSZ	# $ Z  > 2$
3	UC1	A	999	-	19,23,23	1.54	2 (10%)	21,31,31	1.69	4 (19%)

In the following table, the Chirals column lists the number of chiral outliers, the number of chiral centers analysed, the number of these observed in the model and the number defined in the chemical component dictionary. Similar counts are reported in the Torsion and Rings columns. '-' means no outliers of that kind were identified.

Mol	Type	Chain	Res	Link	Chirals	Torsions	Rings
3	UC1	A	999	-	-	1/10/14/14	0/1/2/2

All (2) bond length outliers are listed below:

Mol	Chain	Res	Type	Atoms	Z	Observed(Å)	Ideal(Å)
3	A	999	UC1	C9-C	2.71	1.53	1.49
3	A	999	UC1	CA-C8	3.13	1.53	1.48

All (4) bond angle outliers are listed below:

Mol	Chain	Res	Type	Atoms	Z	Observed(°)	Ideal(°)
3	A	999	UC1	CC-OB-C3	2.04	121.79	117.59
3	A	999	UC1	C3-C4-CL	2.25	122.19	119.42
3	A	999	UC1	OB-C3-C4	3.55	121.01	116.36
3	A	999	UC1	C9-C-N	5.33	120.81	114.12

There are no chirality outliers.

All (1) torsion outliers are listed below:

Mol	Chain	Res	Type	Atoms
3	A	999	UC1	S-C-N-C1

There are no ring outliers.

1 monomer is involved in 2 short contacts:

Mol	Chain	Res	Type	Clashes	Symm-Clashes
3	A	999	UC1	2	0

## 5.7 Other polymers [i](#)

There are no such residues in this entry.

## 5.8 Polymer linkage issues [i](#)

There are no chain breaks in this entry.

## 6 Fit of model and data

### 6.1 Protein, DNA and RNA chains

In the following table, the column labelled ‘#RSRZ> 2’ contains the number (and percentage) of RSRZ outliers, followed by percent RSRZ outliers for the chain as percentile scores relative to all X-ray entries and entries of similar resolution. The OWAB column contains the minimum, median, 95<sup>th</sup> percentile and maximum values of the occupancy-weighted average B-factor per residue. The column labelled ‘Q< 0.9’ lists the number of (and percentage) of residues with an average occupancy less than 0.9.

Mol	Chain	Analysed	<RSRZ>	#RSRZ>2	OWAB(Å <sup>2</sup> )	Q<0.9
1	A	529/560 (94%)	-0.16	21 (3%) 42 34	31, 67, 127, 150	0
2	B	405/440 (92%)	-0.24	7 (1%) 73 68	32, 63, 117, 146	0
All	All	934/1000 (93%)	-0.20	28 (2%) 54 47	31, 66, 121, 150	0

All (28) RSRZ outliers are listed below:

Mol	Chain	Res	Type	RSRZ
1	A	135	ILE	5.2
2	B	88	TRP	5.0
1	A	52	PRO	4.8
1	A	66	LYS	4.4
1	A	136	ASN	4.2
2	B	69	THR	4.1
1	A	64	LYS	3.9
1	A	2	ILE	3.8
1	A	448	ARG	3.8
1	A	51	GLY	3.5
1	A	65	LYS	3.5
1	A	220	LYS	3.3
1	A	74	LEU	3.3
1	A	43	LYS	3.0
1	A	53	GLU	2.9
2	B	284	ARG	2.9
2	B	199	ARG	2.8
1	A	115	TYR	2.8
1	A	29	GLU	2.8
1	A	4	PRO	2.6
2	B	213	GLY	2.5
1	A	62	ALA	2.4
1	A	28	GLU	2.3
1	A	26	LEU	2.3

*Continued on next page...*

*Continued from previous page...*

Mol	Chain	Res	Type	RSRZ
2	B	431	LYS	2.2
1	A	63	ILE	2.2
2	B	184	MET	2.0
1	A	32	LYS	2.0

## 6.2 Non-standard residues in protein, DNA, RNA chains [i](#)

In the following table, the Atoms column lists the number of modelled atoms in the group and the number defined in the chemical component dictionary. LLDF column lists the quality of electron density of the group with respect to its neighbouring residues in protein, DNA or RNA chains. The B-factors column lists the minimum, median, 95<sup>th</sup> percentile and maximum values of B factors of atoms in the group. The column labelled 'Q< 0.9' lists the number of atoms with occupancy less than 0.9.

Mol	Type	Chain	Res	Atoms	RSCC	RSR	LLDF	B-factors(Å <sup>2</sup> )	Q<0.9
1	CSD	A	280	8/9	0.94	0.13	-	72,80,85,91	0
1	CSD	A	188	8/9	0.98	0.12	-	39,48,53,53	0

## 6.3 Carbohydrates [i](#)

There are no carbohydrates in this entry.

## 6.4 Ligands [i](#)

In the following table, the Atoms column lists the number of modelled atoms in the group and the number defined in the chemical component dictionary. LLDF column lists the quality of electron density of the group with respect to its neighbouring residues in protein, DNA or RNA chains. The B-factors column lists the minimum, median, 95<sup>th</sup> percentile and maximum values of B factors of atoms in the group. The column labelled 'Q< 0.9' lists the number of atoms with occupancy less than 0.9.

Mol	Type	Chain	Res	Atoms	RSCC	RSR	LLDF	B-factors(Å <sup>2</sup> )	Q<0.9
3	UC1	A	999	22/22	0.97	0.15	0.21	28,44,57,67	0

## 6.5 Other polymers [i](#)

There are no such residues in this entry.