



# Full wwPDB X-ray Structure Validation Report ⓘ

Feb 1, 2016 – 05:50 PM GMT

PDB ID : 4JOA  
Title : Crystal Structure of Human Anaplastic Lymphoma Kinase in complex with 7-azaindole based inhibitor  
Authors : Hosahalli, S.; Krishnamurthy, N.R.; Lakshminarasimhan, A.  
Deposited on : 2013-03-18  
Resolution : 2.70 Å(reported)

This is a Full wwPDB X-ray Structure Validation Report for a publicly released PDB entry.  
We welcome your comments at [validation@mail.wwpdb.org](mailto:validation@mail.wwpdb.org)  
A user guide is available at  
<http://wwpdb.org/validation/2016/XrayValidationReportHelp>  
with specific help available everywhere you see the ⓘ symbol.

---

The following versions of software and data (see [references ⓘ](#)) were used in the production of this report:

MolProbity : 4.02b-467  
Mogul : 1.7 (RC4), CSD as536be (2015)  
Xtriage (Phenix) : 1.9-1692  
EDS : rb-20026688  
Percentile statistics : 20151230.v01 (using entries in the PDB archive December 30th 2015)  
Refmac : 5.8.0135  
CCP4 : 6.5.0  
Ideal geometry (proteins) : Engh & Huber (2001)  
Ideal geometry (DNA, RNA) : Parkinson et al. (1996)  
Validation Pipeline (wwPDB-VP) : trunk26865

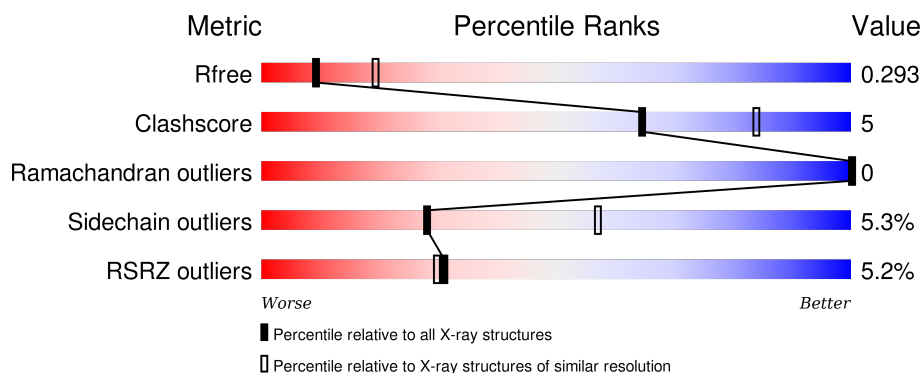
# 1 Overall quality at a glance

The following experimental techniques were used to determine the structure:

## *X-RAY DIFFRACTION*


The reported resolution of this entry is 2.70 Å.

Percentile scores (ranging between 0-100) for global validation metrics of the entry are shown in the following graphic. The table shows the number of entries on which the scores are based.



Metric	Whole archive (#Entries)	Similar resolution (#Entries, resolution range(Å))
$R_{free}$	91344	2103 (2.70-2.70)
Clashscore	102246	2422 (2.70-2.70)
Ramachandran outliers	100387	2382 (2.70-2.70)
Sidechain outliers	100360	2382 (2.70-2.70)
RSRZ outliers	91569	2107 (2.70-2.70)

The table below summarises the geometric issues observed across the polymeric chains and their fit to the electron density. The red, orange, yellow and green segments on the lower bar indicate the fraction of residues that contain outliers for  $\geq 3$ , 2, 1 and 0 types of geometric quality criteria. A grey segment represents the fraction of residues that are not modelled. The numeric value for each fraction is indicated below the corresponding segment, with a dot representing fractions  $\leq 5\%$ . The upper red bar (where present) indicates the fraction of residues that have poor fit to the electron density. The numeric value is given above the bar.

Mol	Chain	Length	Quality of chain
1	A	344	

## 2 Entry composition [i](#)

There are 3 unique types of molecules in this entry. The entry contains 2001 atoms, of which 0 are hydrogens and 0 are deuteriums.

In the tables below, the ZeroOcc column contains the number of atoms modelled with zero occupancy, the AltConf column contains the number of residues with at least one atom in alternate conformation and the Trace column contains the number of residues modelled with at most 2 atoms.

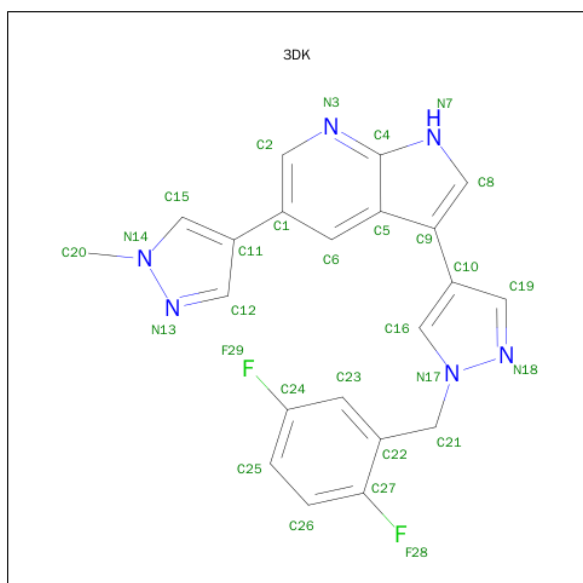
- Molecule 1 is a protein called ALK tyrosine kinase receptor.

Mol	Chain	Residues	Atoms					ZeroOcc	AltConf	Trace
1	A	251	Total	C	N	O	S	0	5	0
			1946	1248	331	351	16			

There are 6 discrepancies between the modelled and reference sequences:

Chain	Residue	Modelled	Actual	Comment	Reference
A	1067	GLY	-	EXPRESSION TAG	UNP Q9UM73
A	1068	ALA	-	EXPRESSION TAG	UNP Q9UM73
A	1069	MET	-	EXPRESSION TAG	UNP Q9UM73
A	1070	GLY	-	EXPRESSION TAG	UNP Q9UM73
A	1071	SER	-	EXPRESSION TAG	UNP Q9UM73
A	1281	GLY	SER	ENGINEERED MUTATION	UNP Q9UM73

- Molecule 2 is 3-[1-(2,5-DIFLUOROBENZYL)-1H-PYRAZOL-4-YL]-5-(1-METHYL-1H-PYRAZOL-4-YL)-1H-PYRROLO[2,3-B]PYRIDINE (three-letter code: 3DK) (formula: C<sub>21</sub>H<sub>16</sub>F<sub>2</sub>N<sub>6</sub>).



Mol	Chain	Residues	Atoms				ZeroOcc	AltConf
2	A	1	Total	C	F	N	0	0
			29	21	2	6		

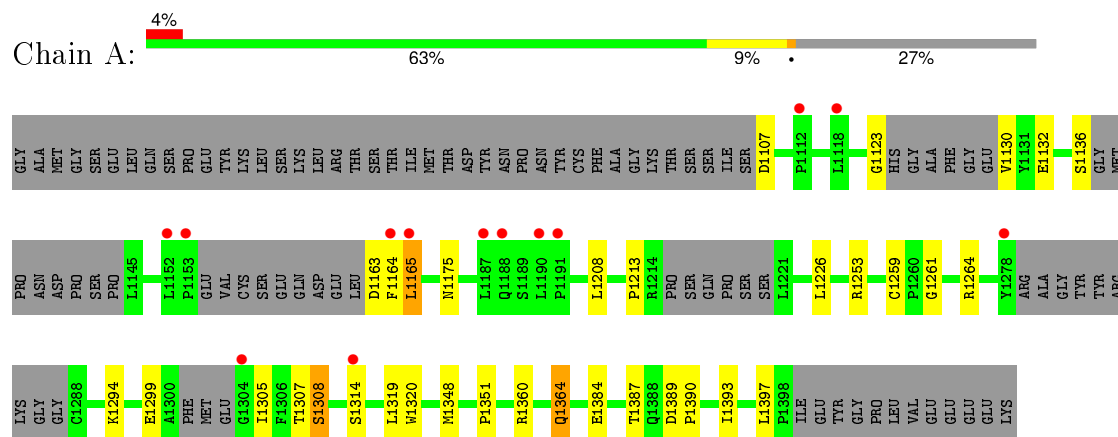
- Molecule 3 is water.

Mol	Chain	Residues	Atoms		ZeroOcc	AltConf
3	A	26	Total	O	0	0
			26	26		

### 3 Residue-property plots [i](#)

These plots are drawn for all protein, RNA and DNA chains in the entry. The first graphic for a chain summarises the proportions of errors displayed in the second graphic. The second graphic shows the sequence view annotated by issues in geometry and electron density. Residues are color-coded according to the number of geometric quality criteria for which they contain at least one outlier: green = 0, yellow = 1, orange = 2 and red = 3 or more. A red dot above a residue indicates a poor fit to the electron density ( $\text{RSRZ} > 2$ ). Stretches of 2 or more consecutive residues without any outlier are shown as a green connector. Residues present in the sample, but not in the model, are shown in grey.

- Molecule 1: ALK tyrosine kinase receptor



## 4 Data and refinement statistics

Property	Value	Source
Space group	P 21 21 21	Depositor
Cell constants a, b, c, $\alpha$ , $\beta$ , $\gamma$	51.79 Å 56.50 Å 104.54 Å 90.00° 90.00° 90.00°	Depositor
Resolution (Å)	50.00 – 2.70 36.79 – 2.70	Depositor EDS
% Data completeness (in resolution range)	87.0 (50.00-2.70) 87.0 (36.79-2.70)	Depositor EDS
$R_{merge}$	0.08	Depositor
$R_{sym}$	(Not available)	Depositor
$\langle I/\sigma(I) \rangle$ <sup>1</sup>	2.09 (at 2.68 Å)	Xtriage
Refinement program	REFMAC 5.2.0001	Depositor
R, $R_{free}$	0.251 , 0.290 0.246 , 0.293	Depositor DCC
$R_{free}$ test set	423 reflections (5.75%)	DCC
Wilson B-factor (Å <sup>2</sup> )	50.5	Xtriage
Anisotropy	0.061	Xtriage
Bulk solvent $k_{sol}$ (e/Å <sup>3</sup> ), $B_{sol}$ (Å <sup>2</sup> )	0.35 , 38.0	EDS
Estimated twinning fraction	No twinning to report.	Xtriage
L-test for twinning <sup>2</sup>	$\langle  L  \rangle = 0.47$ , $\langle L^2 \rangle = 0.30$	Xtriage
Outliers	0 of 7728 reflections	Xtriage
$F_o, F_c$ correlation	0.90	EDS
Total number of atoms	2001	wwPDB-VP
Average B, all atoms (Å <sup>2</sup> )	48.0	wwPDB-VP

Xtriage's analysis on translational NCS is as follows: *The largest off-origin peak in the Patterson function is 6.59% of the height of the origin peak. No significant pseudotranslation is detected.*

<sup>1</sup>Intensities estimated from amplitudes.

<sup>2</sup>Theoretical values of  $\langle |L| \rangle$ ,  $\langle L^2 \rangle$  for acentric reflections are 0.5, 0.375 respectively for untwinned datasets, and 0.333, 0.2 for perfectly twinned datasets.

## 5 Model quality [i](#)

### 5.1 Standard geometry [i](#)

Bond lengths and bond angles in the following residue types are not validated in this section: 3DK

The Z score for a bond length (or angle) is the number of standard deviations the observed value is removed from the expected value. A bond length (or angle) with  $|Z| > 5$  is considered an outlier worth inspection. RMSZ is the root-mean-square of all Z scores of the bond lengths (or angles).

Mol	Chain	Bond lengths		Bond angles	
		RMSZ	$\# Z  > 5$	RMSZ	$\# Z  > 5$
1	A	0.45	1/1988 (0.1%)	0.55	2/2695 (0.1%)

Chiral center outliers are detected by calculating the chiral volume of a chiral center and verifying if the center is modelled as a planar moiety or with the opposite hand. A planarity outlier is detected by checking planarity of atoms in a peptide group, atoms in a mainchain group or atoms of a sidechain that are expected to be planar.

Mol	Chain	#Chirality outliers	#Planarity outliers
1	A	0	1

All (1) bond length outliers are listed below:

Mol	Chain	Res	Type	Atoms	Z	Observed(Å)	Ideal(Å)
1	A	1165	LEU	C-N	10.66	1.58	1.34

All (2) bond angle outliers are listed below:

Mol	Chain	Res	Type	Atoms	Z	Observed(°)	Ideal(°)
1	A	1164	PHE	CB-CA-C	-6.80	96.80	110.40
1	A	1165	LEU	C-N-CA	-6.27	106.02	121.70

There are no chirality outliers.

All (1) planarity outliers are listed below:

Mol	Chain	Res	Type	Group
1	A	1165	LEU	Mainchain

## 5.2 Too-close contacts ⓘ

In the following table, the Non-H and H(model) columns list the number of non-hydrogen atoms and hydrogen atoms in the chain respectively. The H(added) column lists the number of hydrogen atoms added and optimized by MolProbity. The Clashes column lists the number of clashes within the asymmetric unit, whereas Symm-Clashes lists symmetry related clashes.

Mol	Chain	Non-H	H(model)	H(added)	Clashes	Symm-Clashes
1	A	1946	0	1904	20	0
2	A	29	0	16	0	0
3	A	26	0	0	8	0
All	All	2001	0	1920	20	0

The all-atom clashscore is defined as the number of clashes found per 1000 atoms (including hydrogen atoms). The all-atom clashscore for this structure is 5.

All (20) close contacts within the same asymmetric unit are listed below, sorted by their clash magnitude.

Atom-1	Atom-2	Interatomic distance (Å)	Clash overlap (Å)
1:A:1130:VAL:CB	3:A:1618:HOH:O	2.13	0.94
1:A:1123:GLY:C	3:A:1618:HOH:O	2.21	0.78
1:A:1307:THR:HG22	3:A:1609:HOH:O	1.96	0.65
1:A:1136:SER:C	3:A:1613:HOH:O	2.35	0.63
1:A:1320:TRP:CE2	1:A:1348:MET:HE2	2.37	0.59
1:A:1387:THR:O	1:A:1393:ILE:HD11	2.07	0.54
1:A:1307:THR:HG22	1:A:1308:SER:H	1.74	0.53
1:A:1294:LYS:O	3:A:1617:HOH:O	2.20	0.49
1:A:1213:PRO:HG3	3:A:1615:HOH:O	2.14	0.48
1:A:1299:GLU:O	1:A:1305:ILE:N	2.46	0.47
1:A:1360:ARG:O	1:A:1364:GLN:HG2	2.15	0.46
1:A:1308:SER:HB2	3:A:1609:HOH:O	2.18	0.44
1:A:1320:TRP:CE2	1:A:1348:MET:CE	3.01	0.44
1:A:1175:ASN:HB3	3:A:1624:HOH:O	2.18	0.43
1:A:1259:CYS:O	1:A:1264:ARG:HG2	2.19	0.43
1:A:1307:THR:HG22	1:A:1308:SER:N	2.34	0.42
1:A:1320:TRP:CD1	1:A:1351:PRO:HG3	2.55	0.40
1:A:1319:LEU:HD12	1:A:1319:LEU:HA	1.93	0.40
1:A:1261:GLY:O	1:A:1264:ARG:HG3	2.21	0.40
1:A:1389:ASP:HA	1:A:1390:PRO:HD3	1.98	0.40

There are no symmetry-related clashes.



## 5.3 Torsion angles [i](#)

### 5.3.1 Protein backbone [i](#)

In the following table, the Percentiles column shows the percent Ramachandran outliers of the chain as a percentile score with respect to all X-ray entries followed by that with respect to entries of similar resolution.

The Analysed column shows the number of residues for which the backbone conformation was analysed, and the total number of residues.

Mol	Chain	Analysed	Favoured	Allowed	Outliers	Percentiles	
1	A	237/344 (69%)	228 (96%)	9 (4%)	0	100	100

There are no Ramachandran outliers to report.

### 5.3.2 Protein sidechains [i](#)

In the following table, the Percentiles column shows the percent sidechain outliers of the chain as a percentile score with respect to all X-ray entries followed by that with respect to entries of similar resolution.

The Analysed column shows the number of residues for which the sidechain conformation was analysed, and the total number of residues.

Mol	Chain	Analysed	Rotameric	Outliers	Percentiles	
1	A	208/299 (70%)	197 (95%)	11 (5%)	28	57

All (11) residues with a non-rotameric sidechain are listed below:

Mol	Chain	Res	Type
1	A	1107	ASP
1	A	1132	GLU
1	A	1163	ASP
1	A	1208	LEU
1	A	1226	LEU
1	A	1253	ARG
1	A	1308	SER
1	A	1314[A]	SER
1	A	1364	GLN
1	A	1384	GLU
1	A	1397	LEU

Some sidechains can be flipped to improve hydrogen bonding and reduce clashes. All (3) such sidechains are listed below:

Mol	Chain	Res	Type
1	A	1115	ASN
1	A	1238	GLN
1	A	1394	ASN

### 5.3.3 RNA [i](#)

There are no RNA molecules in this entry.

## 5.4 Non-standard residues in protein, DNA, RNA chains [i](#)

There are no non-standard protein/DNA/RNA residues in this entry.

## 5.5 Carbohydrates [i](#)

There are no carbohydrates in this entry.

## 5.6 Ligand geometry [i](#)

1 ligand is modelled in this entry.

In the following table, the Counts columns list the number of bonds (or angles) for which Mogul statistics could be retrieved, the number of bonds (or angles) that are observed in the model and the number of bonds (or angles) that are defined in the chemical component dictionary. The Link column lists molecule types, if any, to which the group is linked. The Z score for a bond length (or angle) is the number of standard deviations the observed value is removed from the expected value. A bond length (or angle) with  $|Z| > 2$  is considered an outlier worth inspection. RMSZ is the root-mean-square of all Z scores of the bond lengths (or angles).

Mol	Type	Chain	Res	Link	Bond lengths			Bond angles		
					Counts	RMSZ	$\# Z  > 2$	Counts	RMSZ	$\# Z  > 2$
2	3DK	A	1501	-	28,33,33	1.23	2 (7%)	34,48,48	2.09	10 (29%)

In the following table, the Chirals column lists the number of chiral outliers, the number of chiral centers analysed, the number of these observed in the model and the number defined in the chemical component dictionary. Similar counts are reported in the Torsion and Rings columns. '-' means no outliers of that kind were identified.

Mol	Type	Chain	Res	Link	Chirals	Torsions	Rings
2	3DK	A	1501	-	-	0/10/12/12	0/5/5/5

All (2) bond length outliers are listed below:

Mol	Chain	Res	Type	Atoms	Z	Observed(Å)	Ideal(Å)
2	A	1501	3DK	C20-N14	2.00	1.49	1.46
2	A	1501	3DK	N18-N17	4.00	1.41	1.35

All (10) bond angle outliers are listed below:

Mol	Chain	Res	Type	Atoms	Z	Observed(°)	Ideal(°)
2	A	1501	3DK	C16-C10-C9	-3.66	123.18	127.84
2	A	1501	3DK	C19-C10-C9	-3.65	123.19	127.84
2	A	1501	3DK	C1-C2-N3	-3.32	121.27	125.46
2	A	1501	3DK	C25-C24-C23	-2.55	120.06	123.35
2	A	1501	3DK	C1-C6-C5	-2.51	117.72	122.53
2	A	1501	3DK	C19-N18-N17	3.03	107.38	104.24
2	A	1501	3DK	C21-N17-C16	3.49	133.64	129.19
2	A	1501	3DK	C2-N3-C4	3.65	121.23	116.93
2	A	1501	3DK	C23-C22-C27	3.68	119.38	116.52
2	A	1501	3DK	C16-C10-C19	4.26	113.62	104.60

There are no chirality outliers.

There are no torsion outliers.

There are no ring outliers.

No monomer is involved in short contacts.

## 5.7 Other polymers [i](#)

There are no such residues in this entry.

## 5.8 Polymer linkage issues [i](#)

There are no chain breaks in this entry.

## 6 Fit of model and data [i](#)

### 6.1 Protein, DNA and RNA chains [i](#)

In the following table, the column labelled ‘#RSRZ> 2’ contains the number (and percentage) of RSRZ outliers, followed by percent RSRZ outliers for the chain as percentile scores relative to all X-ray entries and entries of similar resolution. The OWAB column contains the minimum, median, 95<sup>th</sup> percentile and maximum values of the occupancy-weighted average B-factor per residue. The column labelled ‘Q< 0.9’ lists the number of (and percentage) of residues with an average occupancy less than 0.9.

Mol	Chain	Analysed	<RSRZ>	#RSRZ>2	OWAB(Å <sup>2</sup> )	Q<0.9
1	A	251/344 (72%)	0.31	13 (5%) 31 30	34, 47, 70, 72	5 (1%)

All (13) RSRZ outliers are listed below:

Mol	Chain	Res	Type	RSRZ
1	A	1165	LEU	8.6
1	A	1278	TYR	5.0
1	A	1112	PRO	4.6
1	A	1190	LEU	4.3
1	A	1187	LEU	3.9
1	A	1188	GLN	3.4
1	A	1191	PRO	3.2
1	A	1164	PHE	2.8
1	A	1152	LEU	2.7
1	A	1118	LEU	2.2
1	A	1314[A]	SER	2.1
1	A	1304	GLY	2.0
1	A	1153	PRO	2.0

### 6.2 Non-standard residues in protein, DNA, RNA chains [i](#)

There are no non-standard protein/DNA/RNA residues in this entry.

### 6.3 Carbohydrates [i](#)

There are no carbohydrates in this entry.

## 6.4 Ligands [i](#)

In the following table, the Atoms column lists the number of modelled atoms in the group and the number defined in the chemical component dictionary. LLDF column lists the quality of electron density of the group with respect to its neighbouring residues in protein, DNA or RNA chains. The B-factors column lists the minimum, median, 95<sup>th</sup> percentile and maximum values of B factors of atoms in the group. The column labelled 'Q< 0.9' lists the number of atoms with occupancy less than 0.9.

Mol	Type	Chain	Res	Atoms	RSCC	RSR	LLDF	B-factors( $\text{\AA}^2$ )	Q<0.9
2	3DK	A	1501	29/29	0.88	0.26	1.38	63,63,66,67	0

## 6.5 Other polymers [i](#)

There are no such residues in this entry.