



# wwPDB X-ray Structure Validation Summary Report ⓘ

Feb 1, 2016 – 09:48 AM GMT

PDB ID : 3JRX  
Title : Crystal structure of the BC domain of ACC2 in complex with soraphen A  
Authors : Cho, Y.S.; Lee, J.I.; Shin, D.; Kim, H.T.; Lee, T.G.; Heo, Y.S.  
Deposited on : 2009-09-09  
Resolution : 2.50 Å(reported)

This is a wwPDB X-ray Structure Validation Summary Report for a publicly released PDB entry.  
We welcome your comments at [validation@mail.wwpdb.org](mailto:validation@mail.wwpdb.org)  
A user guide is available at  
<http://wwpdb.org/validation/2016/XrayValidationReportHelp>  
with specific help available everywhere you see the ⓘ symbol.

---

The following versions of software and data (see [references ⓘ](#)) were used in the production of this report:

MolProbity : 4.02b-467  
Mogul : 1.7 (RC4), CSD as536be (2015)  
Xtriage (Phenix) : 1.9-1692  
EDS : rb-20026688  
Percentile statistics : 20151230.v01 (using entries in the PDB archive December 30th 2015)  
Refmac : 5.8.0135  
CCP4 : 6.5.0  
Ideal geometry (proteins) : Engh & Huber (2001)  
Ideal geometry (DNA, RNA) : Parkinson et al. (1996)  
Validation Pipeline (wwPDB-VP) : trunk26865

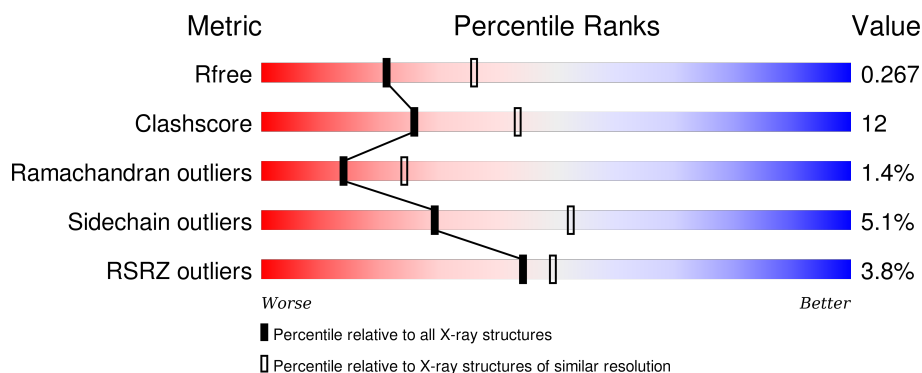
# 1 Overall quality at a glance

The following experimental techniques were used to determine the structure:

## *X-RAY DIFFRACTION*

The reported resolution of this entry is 2.50 Å.

Percentile scores (ranging between 0-100) for global validation metrics of the entry are shown in the following graphic. The table shows the number of entries on which the scores are based.



Metric	Whole archive (#Entries)	Similar resolution (#Entries, resolution range(Å))
$R_{free}$	91344	3553 (2.50-2.50)
Clashscore	102246	4242 (2.50-2.50)
Ramachandran outliers	100387	4156 (2.50-2.50)
Sidechain outliers	100360	4158 (2.50-2.50)
RSRZ outliers	91569	3562 (2.50-2.50)

The table below summarises the geometric issues observed across the polymeric chains and their fit to the electron density. The red, orange, yellow and green segments on the lower bar indicate the fraction of residues that contain outliers for  $\geq 3$ , 2, 1 and 0 types of geometric quality criteria. A grey segment represents the fraction of residues that are not modelled. The numeric value for each fraction is indicated below the corresponding segment, with a dot representing fractions  $\leq 5\%$ . The upper red bar (where present) indicates the fraction of residues that have poor fit to the electron density. The numeric value is given above the bar.

Mol	Chain	Length	Quality of chain
1	A	587	<div> <div>3%</div> <div>62%</div> <div>20%</div> <div>•</div> <div>16%</div> </div>

## 2 Entry composition

There are 3 unique types of molecules in this entry. The entry contains 4011 atoms, of which 0 are hydrogens and 0 are deuteriums.

In the tables below, the ZeroOcc column contains the number of atoms modelled with zero occupancy, the AltConf column contains the number of residues with at least one atom in alternate conformation and the Trace column contains the number of residues modelled with at most 2 atoms.

- Molecule 1 is a protein called Acetyl-CoA carboxylase 2.

Mol	Chain	Residues	Atoms					ZeroOcc	AltConf	Trace
1	A	496	Total	C	N	O	S	0	0	0
			3881	2473	673	717	18			

There are 28 discrepancies between the modelled and reference sequences:

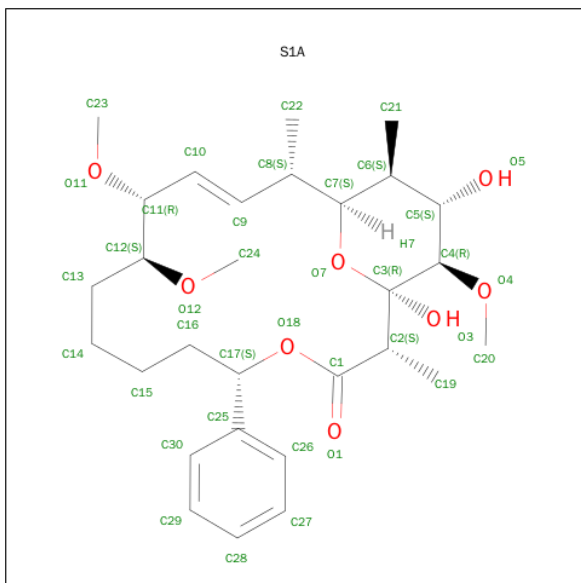
Chain	Residue	Modelled	Actual	Comment	Reference
A	205	MET	-	EXPRESSION TAG	UNP O00763
A	206	ARG	-	EXPRESSION TAG	UNP O00763
A	207	GLY	-	EXPRESSION TAG	UNP O00763
A	208	SER	-	EXPRESSION TAG	UNP O00763
A	209	GLY	-	EXPRESSION TAG	UNP O00763
A	210	SER	-	EXPRESSION TAG	UNP O00763
A	211	MET	-	EXPRESSION TAG	UNP O00763
A	212	ARG	-	EXPRESSION TAG	UNP O00763
A	213	GLY	-	EXPRESSION TAG	UNP O00763
A	214	SER	-	EXPRESSION TAG	UNP O00763
A	215	GLY	-	EXPRESSION TAG	UNP O00763
A	216	SER	-	EXPRESSION TAG	UNP O00763
A	776	LEU	-	EXPRESSION TAG	UNP O00763
A	777	GLU	-	EXPRESSION TAG	UNP O00763
A	778	HIS	-	EXPRESSION TAG	UNP O00763
A	779	HIS	-	EXPRESSION TAG	UNP O00763
A	780	HIS	-	EXPRESSION TAG	UNP O00763
A	781	HIS	-	EXPRESSION TAG	UNP O00763
A	782	HIS	-	EXPRESSION TAG	UNP O00763
A	783	HIS	-	EXPRESSION TAG	UNP O00763
A	784	LEU	-	EXPRESSION TAG	UNP O00763
A	785	GLU	-	EXPRESSION TAG	UNP O00763
A	786	HIS	-	EXPRESSION TAG	UNP O00763
A	787	HIS	-	EXPRESSION TAG	UNP O00763
A	788	HIS	-	EXPRESSION TAG	UNP O00763
A	789	HIS	-	EXPRESSION TAG	UNP O00763
A	790	HIS	-	EXPRESSION TAG	UNP O00763

*Continued on next page...*

*Continued from previous page...*

Chain	Residue	Modelled	Actual	Comment	Reference
A	791	HIS	-	EXPRESSION TAG	UNP O00763

- Molecule 2 is SORAPHEN A (three-letter code: S1A) (formula:  $C_{29}H_{44}O_8$ ).



Mol	Chain	Residues	Atoms	ZeroOcc	AltConf
2	A	1	Total C O 37 29 8	0	0

- Molecule 3 is water.

Mol	Chain	Residues	Atoms	ZeroOcc	AltConf
3	A	93	Total O 93 93	0	0



## 4 Data and refinement statistics

Property	Value	Source
Space group	P 32 2 1	Depositor
Cell constants a, b, c, $\alpha$ , $\beta$ , $\gamma$	74.74Å 74.74Å 179.41Å 90.00° 90.00° 120.00°	Depositor
Resolution (Å)	29.90 – 2.50 43.93 – 2.30	Depositor EDS
% Data completeness (in resolution range)	95.7 (29.90-2.50) 94.2 (43.93-2.30)	Depositor EDS
$R_{merge}$	(Not available)	Depositor
$R_{sym}$	(Not available)	Depositor
$\langle I/\sigma(I) \rangle$ <sup>1</sup>	1.30 (at 2.29Å)	Xtriage
Refinement program	CNS 1.1	Depositor
R, $R_{free}$	0.221 , 0.266 0.221 , 0.267	Depositor DCC
$R_{free}$ test set	960 reflections (4.82%)	DCC
Wilson B-factor (Å <sup>2</sup> )	39.0	Xtriage
Anisotropy	0.180	Xtriage
Bulk solvent $k_{sol}$ (e/Å <sup>3</sup> ), $B_{sol}$ (Å <sup>2</sup> )	0.37 , 46.1	EDS
Estimated twinning fraction	0.037 for -h,-k,l	Xtriage
L-test for twinning <sup>2</sup>	$\langle  L  \rangle = 0.49$ , $\langle L^2 \rangle = 0.32$	Xtriage
Outliers	0 of 26204 reflections	Xtriage
$F_o, F_c$ correlation	0.93	EDS
Total number of atoms	4011	wwPDB-VP
Average B, all atoms (Å <sup>2</sup> )	42.0	wwPDB-VP

Xtriage's analysis on translational NCS is as follows: *The largest off-origin peak in the Patterson function is 7.10% of the height of the origin peak. No significant pseudotranslation is detected.*

<sup>1</sup>Intensities estimated from amplitudes.

<sup>2</sup>Theoretical values of  $\langle |L| \rangle$ ,  $\langle L^2 \rangle$  for acentric reflections are 0.5, 0.375 respectively for untwinned datasets, and 0.333, 0.2 for perfectly twinned datasets.

## 5 Model quality [i](#)

### 5.1 Standard geometry [i](#)

Bond lengths and bond angles in the following residue types are not validated in this section: S1A

The Z score for a bond length (or angle) is the number of standard deviations the observed value is removed from the expected value. A bond length (or angle) with  $|Z| > 5$  is considered an outlier worth inspection. RMSZ is the root-mean-square of all Z scores of the bond lengths (or angles).

Mol	Chain	Bond lengths		Bond angles	
		RMSZ	# Z  >5	RMSZ	# Z  >5
1	A	0.40	0/3971	0.58	0/5390

Chiral center outliers are detected by calculating the chiral volume of a chiral center and verifying if the center is modelled as a planar moiety or with the opposite hand. A planarity outlier is detected by checking planarity of atoms in a peptide group, atoms in a mainchain group or atoms of a sidechain that are expected to be planar.

Mol	Chain	#Chirality outliers	#Planarity outliers
1	A	0	1

There are no bond length outliers.

There are no bond angle outliers.

There are no chirality outliers.

All (1) planarity outliers are listed below:

Mol	Chain	Res	Type	Group
1	A	683	TYR	Sidechain

### 5.2 Too-close contacts [i](#)

In the following table, the Non-H and H(model) columns list the number of non-hydrogen atoms and hydrogen atoms in the chain respectively. The H(added) column lists the number of hydrogen atoms added and optimized by MolProbity. The Clashes column lists the number of clashes within the asymmetric unit, whereas Symm-Clashes lists symmetry related clashes.

Mol	Chain	Non-H	H(model)	H(added)	Clashes	Symm-Clashes
1	A	3881	0	3834	97	0
2	A	37	0	44	0	0

*Continued on next page...*

*Continued from previous page...*

Mol	Chain	Non-H	H(model)	H(added)	Clashes	Symm-Clashes
3	A	93	0	0	1	0
All	All	4011	0	3878	97	0

The all-atom clashscore is defined as the number of clashes found per 1000 atoms (including hydrogen atoms). The all-atom clashscore for this structure is 12.

The worst 5 of 97 close contacts within the same asymmetric unit are listed below, sorted by their clash magnitude.

Atom-1	Atom-2	Interatomic distance (Å)	Clash overlap (Å)
1:A:267:ASN:HD22	1:A:268:ASN:H	1.20	0.85
1:A:276:MET:HE3	1:A:314:ALA:HA	1.60	0.81
1:A:237:ASP:OD2	1:A:239:HIS:HD2	1.65	0.79
1:A:276:MET:CE	1:A:314:ALA:HA	2.13	0.78
1:A:475:ILE:HD12	1:A:475:ILE:H	1.57	0.70

There are no symmetry-related clashes.

## 5.3 Torsion angles [i](#)

### 5.3.1 Protein backbone [i](#)

In the following table, the Percentiles column shows the percent Ramachandran outliers of the chain as a percentile score with respect to all X-ray entries followed by that with respect to entries of similar resolution.

The Analysed column shows the number of residues for which the backbone conformation was analysed, and the total number of residues.

Mol	Chain	Analysed	Favoured	Allowed	Outliers	Percentiles
1	A	488/587 (83%)	465 (95%)	16 (3%)	7 (1%)	<b>14</b> <b>24</b>

5 of 7 Ramachandran outliers are listed below:

Mol	Chain	Res	Type
1	A	496	GLN
1	A	562	SER
1	A	732	THR
1	A	574	GLY
1	A	676	SER

### 5.3.2 Protein sidechains ⓘ

In the following table, the Percentiles column shows the percent sidechain outliers of the chain as a percentile score with respect to all X-ray entries followed by that with respect to entries of similar resolution.

The Analysed column shows the number of residues for which the sidechain conformation was analysed, and the total number of residues.

Mol	Chain	Analysed	Rotameric	Outliers	Percentiles
1	A	413/490 (84%)	392 (95%)	21 (5%)	29 52

5 of 21 residues with a non-rotameric sidechain are listed below:

Mol	Chain	Res	Type
1	A	465	ARG
1	A	562	SER
1	A	709	ASN
1	A	382	LEU
1	A	711	GLU

Some sidechains can be flipped to improve hydrogen bonding and reduce clashes. 5 of 20 such sidechains are listed below:

Mol	Chain	Res	Type
1	A	512	ASN
1	A	572	GLN
1	A	716	ASN
1	A	481	GLN
1	A	496	GLN

### 5.3.3 RNA ⓘ

There are no RNA molecules in this entry.

## 5.4 Non-standard residues in protein, DNA, RNA chains ⓘ

There are no non-standard protein/DNA/RNA residues in this entry.

## 5.5 Carbohydrates ⓘ

There are no carbohydrates in this entry.

## 5.6 Ligand geometry ⓘ

1 ligand is modelled in this entry.

In the following table, the Counts columns list the number of bonds (or angles) for which Mogul statistics could be retrieved, the number of bonds (or angles) that are observed in the model and the number of bonds (or angles) that are defined in the chemical component dictionary. The Link column lists molecule types, if any, to which the group is linked. The Z score for a bond length (or angle) is the number of standard deviations the observed value is removed from the expected value. A bond length (or angle) with  $|Z| > 2$  is considered an outlier worth inspection. RMSZ is the root-mean-square of all Z scores of the bond lengths (or angles).

Mol	Type	Chain	Res	Link	Bond lengths			Bond angles		
					Counts	RMSZ	# Z  > 2	Counts	RMSZ	# Z  > 2
2	S1A	A	1000	-	38,39,39	1.82	11 (28%)	42,55,55	1.25	5 (11%)

In the following table, the Chirals column lists the number of chiral outliers, the number of chiral centers analysed, the number of these observed in the model and the number defined in the chemical component dictionary. Similar counts are reported in the Torsion and Rings columns. '-' means no outliers of that kind were identified.

Mol	Type	Chain	Res	Link	Chirals	Torsions	Rings
2	S1A	A	1000	-	-	0/44/67/67	0/1/3/3

The worst 5 of 11 bond length outliers are listed below:

Mol	Chain	Res	Type	Atoms	Z	Observed(Å)	Ideal(Å)
2	A	1000	S1A	C29-C30	2.09	1.43	1.38
2	A	1000	S1A	C29-C28	2.10	1.43	1.38
2	A	1000	S1A	C12-C11	2.28	1.57	1.52
2	A	1000	S1A	C6-C7	2.31	1.58	1.53
2	A	1000	S1A	O3-C3	2.43	1.45	1.40

All (5) bond angle outliers are listed below:

Mol	Chain	Res	Type	Atoms	Z	Observed(°)	Ideal(°)
2	A	1000	S1A	C16-C17-C25	-4.57	104.66	112.98
2	A	1000	S1A	O18-C1-O1	-2.83	118.06	123.89
2	A	1000	S1A	C8-C7-C6	-2.43	111.54	115.69
2	A	1000	S1A	C21-C6-C5	-2.11	109.45	111.93
2	A	1000	S1A	O18-C1-C2	2.06	113.38	110.83

There are no chirality outliers.

There are no torsion outliers.

There are no ring outliers.

No monomer is involved in short contacts.

## 5.7 Other polymers

There are no such residues in this entry.

## 5.8 Polymer linkage issues

There are no chain breaks in this entry.

## 6 Fit of model and data [i](#)

### 6.1 Protein, DNA and RNA chains [i](#)

In the following table, the column labelled ‘#RSRZ> 2’ contains the number (and percentage) of RSRZ outliers, followed by percent RSRZ outliers for the chain as percentile scores relative to all X-ray entries and entries of similar resolution. The OWAB column contains the minimum, median, 95<sup>th</sup> percentile and maximum values of the occupancy-weighted average B-factor per residue. The column labelled ‘Q< 0.9’ lists the number of (and percentage) of residues with an average occupancy less than 0.9.

Mol	Chain	Analysed	<RSRZ>	#RSRZ>2	OWAB(Å <sup>2</sup> )	Q<0.9
1	A	496/587 (84%)	0.05	19 (3%) 44 49	22, 39, 65, 79	0

The worst 5 of 19 RSRZ outliers are listed below:

Mol	Chain	Res	Type	RSRZ
1	A	731	ARG	4.2
1	A	381	ALA	3.8
1	A	699	GLN	3.7
1	A	420	LYS	3.7
1	A	240	ARG	3.6

### 6.2 Non-standard residues in protein, DNA, RNA chains [i](#)

There are no non-standard protein/DNA/RNA residues in this entry.

### 6.3 Carbohydrates [i](#)

There are no carbohydrates in this entry.

### 6.4 Ligands [i](#)

In the following table, the Atoms column lists the number of modelled atoms in the group and the number defined in the chemical component dictionary. LLDF column lists the quality of electron density of the group with respect to its neighbouring residues in protein, DNA or RNA chains. The B-factors column lists the minimum, median, 95<sup>th</sup> percentile and maximum values of B factors of atoms in the group. The column labelled ‘Q< 0.9’ lists the number of atoms with occupancy less than 0.9.

Mol	Type	Chain	Res	Atoms	RSCC	RSR	LLDF	B-factors(Å <sup>2</sup> )	Q<0.9
2	S1A	A	1000	37/37	0.91	0.16	0.96	29,34,40,43	0

## 6.5 Other polymers [i](#)

There are no such residues in this entry.