



wwPDB X-ray Structure Validation Summary Report ⓘ

Dec 28, 2016 – 07:58 PM EST

PDB ID : 5JY3
Title : CRYSTAL STRUCTURE OF LXRbeta (NUCLEAR RECEPTOR SUBFAMILY 1, GROUP H, MEMBER 2) COMPLEXED WITH BMS-852927
Authors : Muckelbauer, J.K.
Deposited on : 2016-05-13
Resolution : 2.40 Å(reported)

This is a wwPDB X-ray Structure Validation Summary Report for a publicly released PDB entry.

We welcome your comments at validation@mail.wwpdb.org

A user guide is available at

<http://wwpdb.org/validation/2016/XrayValidationReportHelp>

with specific help available everywhere you see the ⓘ symbol.

The following versions of software and data (see [references ⓘ](#)) were used in the production of this report:

MolProbity	:	4.02b-467
Mogul	:	1.7.1 (RC1), CSD as537be (2016)
Xtriage (Phenix)	:	1.9-1692
EDS	:	rb-20028442
Percentile statistics	:	20151230.v01 (using entries in the PDB archive December 30th 2015)
Refmac	:	5.8.0135
CCP4	:	6.5.0
Ideal geometry (proteins)	:	Engh & Huber (2001)
Ideal geometry (DNA, RNA)	:	Parkinson et al. (1996)
Validation Pipeline (wwPDB-VP)	:	rb-20028442

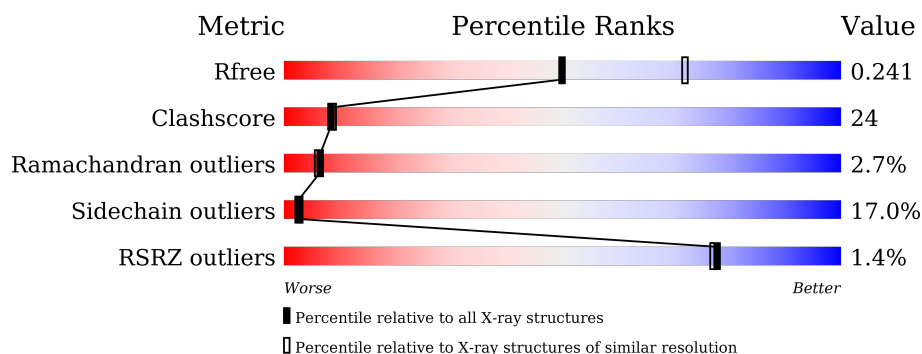
1 Overall quality at a glance ⓘ

The following experimental techniques were used to determine the structure:

X-RAY DIFFRACTION

The reported resolution of this entry is 2.40 Å.

Percentile scores (ranging between 0-100) for global validation metrics of the entry are shown in the following graphic. The table shows the number of entries on which the scores are based.



Metric	Whole archive (#Entries)	Similar resolution (#Entries, resolution range(Å))
R_{free}	91344	2919 (2.40-2.40)
Clashscore	102246	3407 (2.40-2.40)
Ramachandran outliers	100387	3351 (2.40-2.40)
Sidechain outliers	100360	3352 (2.40-2.40)
RSRZ outliers	91569	2928 (2.40-2.40)

The table below summarises the geometric issues observed across the polymeric chains and their fit to the electron density. The red, orange, yellow and green segments on the lower bar indicate the fraction of residues that contain outliers for ≥ 3 , 2, 1 and 0 types of geometric quality criteria. A grey segment represents the fraction of residues that are not modelled. The numeric value for each fraction is indicated below the corresponding segment, with a dot representing fractions $\leq 5\%$. The upper red bar (where present) indicates the fraction of residues that have poor fit to the electron density. The numeric value is given above the bar.

Mol	Chain	Length	Quality of chain
1	A	264	<div> <div> <div></div> <div>48%</div> <div>27%</div> <div>11%</div> <div>•</div> <div>14%</div> </div> </div>
1	B	264	<div> <div>2%</div> <div> <div></div> <div>42%</div> <div>35%</div> <div>8%</div> <div>•</div> <div>13%</div> </div> </div>
1	C	264	<div> <div>2%</div> <div> <div></div> <div>44%</div> <div>32%</div> <div>11%</div> <div>•</div> <div>13%</div> </div> </div>
1	D	264	<div> <div> <div></div> <div>40%</div> <div>35%</div> <div>10%</div> <div>•</div> <div>14%</div> </div> </div>

The following table lists non-polymeric compounds, carbohydrate monomers and non-standard residues in protein, DNA, RNA chains that are outliers for geometric or electron-density-fit crite-

ria:

Mol	Type	Chain	Res	Chirality	Geometry	Clashes	Electron density
3	BU1	B	502	-	-	-	X
3	BU1	D	502	-	-	X	-

2 Entry composition

There are 4 unique types of molecules in this entry. The entry contains 7798 atoms, of which 0 are hydrogens and 0 are deuteriums.

In the tables below, the ZeroOcc column contains the number of atoms modelled with zero occupancy, the AltConf column contains the number of residues with at least one atom in alternate conformation and the Trace column contains the number of residues modelled with at most 2 atoms.

- Molecule 1 is a protein called Oxysterols receptor LXR-beta.

Mol	Chain	Residues	Atoms					ZeroOcc	AltConf	Trace
1	A	228	Total	C	N	O	S	0	0	0
			1862	1192	329	334	7			
1	B	230	Total	C	N	O	S	0	1	0
			1876	1204	329	336	7			
1	C	231	Total	C	N	O	S	0	1	0
			1883	1205	333	338	7			
1	D	227	Total	C	N	O	S	0	0	0
			1855	1187	328	333	7			

There are 64 discrepancies between the modelled and reference sequences:

Chain	Residue	Modelled	Actual	Comment	Reference
A	198	MET	-	initiating methionine	UNP P55055
A	199	HIS	-	expression tag	UNP P55055
A	200	HIS	-	expression tag	UNP P55055
A	201	HIS	-	expression tag	UNP P55055
A	202	HIS	-	expression tag	UNP P55055
A	203	HIS	-	expression tag	UNP P55055
A	204	HIS	-	expression tag	UNP P55055
A	205	GLY	-	expression tag	UNP P55055
A	206	GLU	-	expression tag	UNP P55055
A	207	ASN	-	expression tag	UNP P55055
A	208	LEU	-	expression tag	UNP P55055
A	209	TYR	-	expression tag	UNP P55055
A	210	PHE	-	expression tag	UNP P55055
A	211	GLN	-	expression tag	UNP P55055
A	212	GLY	-	expression tag	UNP P55055
A	213	SER	-	expression tag	UNP P55055
B	198	MET	-	initiating methionine	UNP P55055
B	199	HIS	-	expression tag	UNP P55055
B	200	HIS	-	expression tag	UNP P55055
B	201	HIS	-	expression tag	UNP P55055
B	202	HIS	-	expression tag	UNP P55055

Continued on next page...

Continued from previous page...

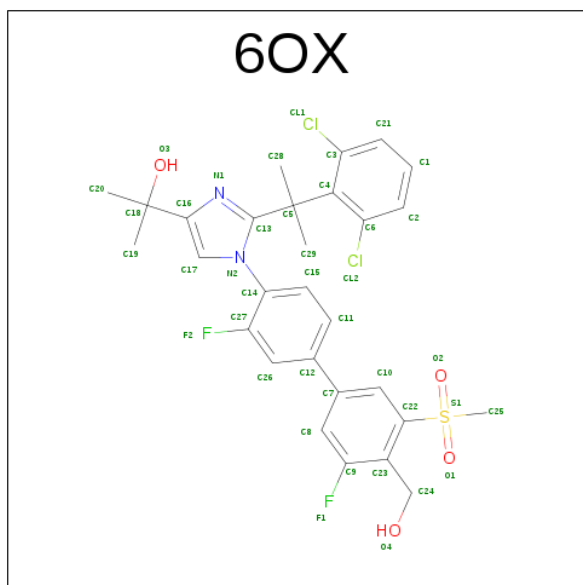
Chain	Residue	Modelled	Actual	Comment	Reference
B	203	HIS	-	expression tag	UNP P55055
B	204	HIS	-	expression tag	UNP P55055
B	205	GLY	-	expression tag	UNP P55055
B	206	GLU	-	expression tag	UNP P55055
B	207	ASN	-	expression tag	UNP P55055
B	208	LEU	-	expression tag	UNP P55055
B	209	TYR	-	expression tag	UNP P55055
B	210	PHE	-	expression tag	UNP P55055
B	211	GLN	-	expression tag	UNP P55055
B	212	GLY	-	expression tag	UNP P55055
B	213	SER	-	expression tag	UNP P55055
C	198	MET	-	initiating methionine	UNP P55055
C	199	HIS	-	expression tag	UNP P55055
C	200	HIS	-	expression tag	UNP P55055
C	201	HIS	-	expression tag	UNP P55055
C	202	HIS	-	expression tag	UNP P55055
C	203	HIS	-	expression tag	UNP P55055
C	204	HIS	-	expression tag	UNP P55055
C	205	GLY	-	expression tag	UNP P55055
C	206	GLU	-	expression tag	UNP P55055
C	207	ASN	-	expression tag	UNP P55055
C	208	LEU	-	expression tag	UNP P55055
C	209	TYR	-	expression tag	UNP P55055
C	210	PHE	-	expression tag	UNP P55055
C	211	GLN	-	expression tag	UNP P55055
C	212	GLY	-	expression tag	UNP P55055
C	213	SER	-	expression tag	UNP P55055
D	198	MET	-	initiating methionine	UNP P55055
D	199	HIS	-	expression tag	UNP P55055
D	200	HIS	-	expression tag	UNP P55055
D	201	HIS	-	expression tag	UNP P55055
D	202	HIS	-	expression tag	UNP P55055
D	203	HIS	-	expression tag	UNP P55055
D	204	HIS	-	expression tag	UNP P55055
D	205	GLY	-	expression tag	UNP P55055
D	206	GLU	-	expression tag	UNP P55055
D	207	ASN	-	expression tag	UNP P55055
D	208	LEU	-	expression tag	UNP P55055
D	209	TYR	-	expression tag	UNP P55055
D	210	PHE	-	expression tag	UNP P55055
D	211	GLN	-	expression tag	UNP P55055
D	212	GLY	-	expression tag	UNP P55055

Continued on next page...

Continued from previous page...

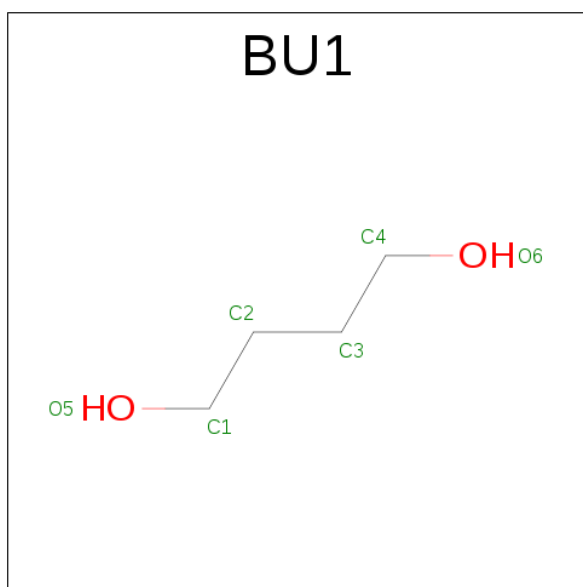
Chain	Residue	Modelled	Actual	Comment	Reference
D	213	SER	-	expression tag	UNP P55055

- Molecule 2 is 2-[2-[2-[2,6-bis(chloranyl)phenyl]propan-2-yl]-1-[2-fluoranyl-4-[3-fluoranyl-4-(hydroxymethyl)-5-methylsulfonyl-phenyl]phenyl]imidazol-4-yl]propan-2-ol (three-letter code: 6OX) (formula: $C_{29}H_{28}Cl_2F_2N_2O_4S$).



Mol	Chain	Residues	Atoms							ZeroOcc	AltConf
2	A	1	Total	C	Cl	F	N	O	S	0	0
			40	29	2	2	2	4	1		
2	B	1	Total	C	Cl	F	N	O	S	0	0
			40	29	2	2	2	4	1		
2	C	1	Total	C	Cl	F	N	O	S	0	0
			40	29	2	2	2	4	1		
2	D	1	Total	C	Cl	F	N	O	S	0	0
			40	29	2	2	2	4	1		

- Molecule 3 is 1,4-BUTANEDIOL (three-letter code: BU1) (formula: $C_4H_{10}O_2$).



Mol	Chain	Residues	Atoms			ZeroOcc	AltConf
3	B	1	Total	C	O	0	0
			6	4	2		
3	D	1	Total	C	O	0	0
			6	4	2		

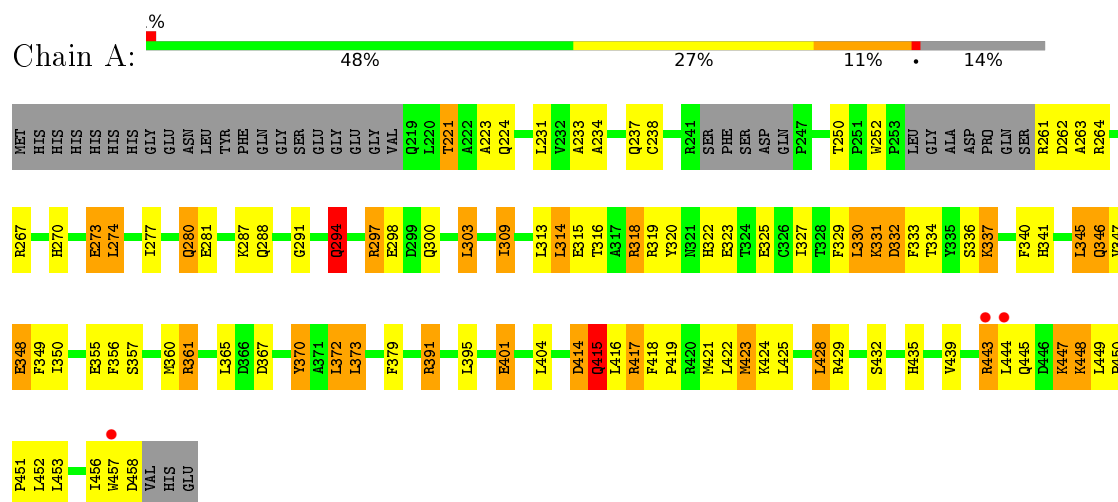
- Molecule 4 is water.

Mol	Chain	Residues	Atoms		ZeroOcc	AltConf
4	A	35	Total	O	0	0
			35	35		
4	B	37	Total	O	0	0
			37	37		
4	C	37	Total	O	0	0
			37	37		
4	D	41	Total	O	0	0
			41	41		

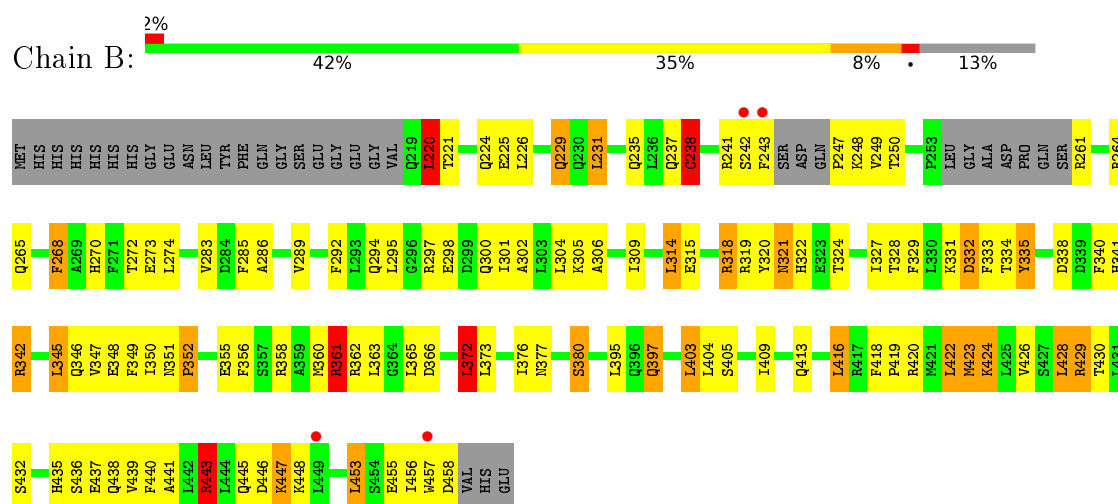
3 Residue-property plots

These plots are drawn for all protein, RNA and DNA chains in the entry. The first graphic for a chain summarises the proportions of errors displayed in the second graphic. The second graphic shows the sequence view annotated by issues in geometry and electron density. Residues are color-coded according to the number of geometric quality criteria for which they contain at least one outlier: green = 0, yellow = 1, orange = 2 and red = 3 or more. A red dot above a residue indicates a poor fit to the electron density ($RSRZ > 2$). Stretches of 2 or more consecutive residues without any outlier are shown as a green connector. Residues present in the sample, but not in the model, are shown in grey.

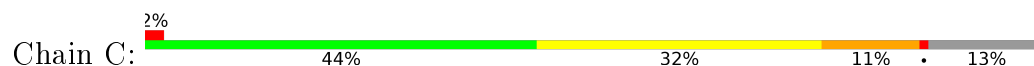
• Molecule 1: Oxysterols receptor LXR-beta

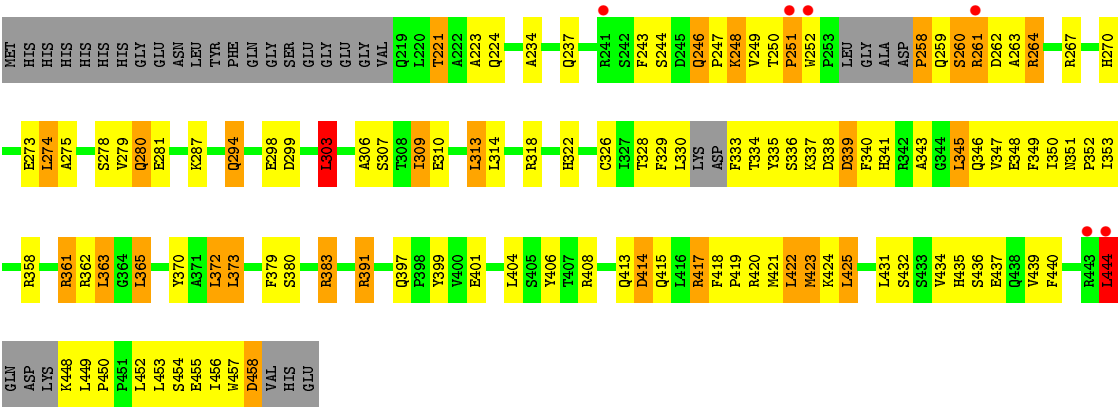


• Molecule 1: Oxysterols receptor LXR-beta

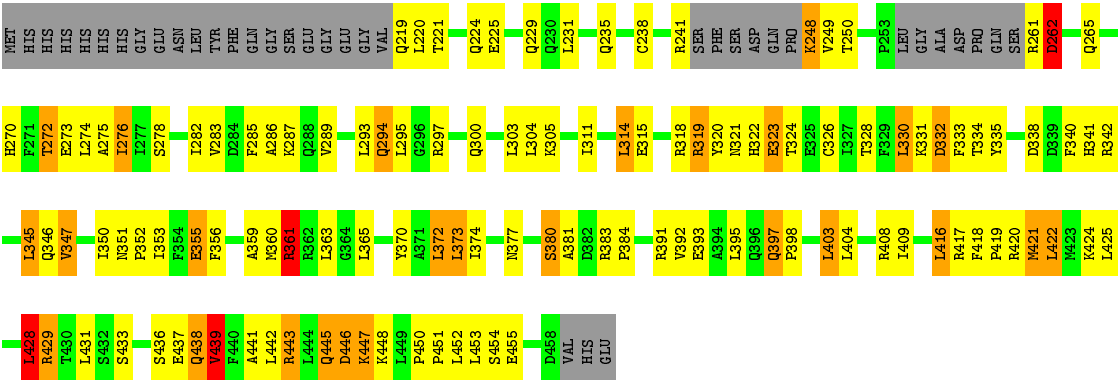
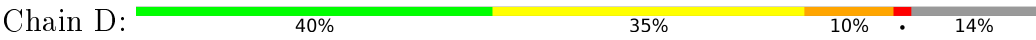


• Molecule 1: Oxysterols receptor LXR-beta





● Molecule 1: Oxysterols receptor LXR-beta



4 Data and refinement statistics

Property	Value	Source
Space group	C 1 2 1	Depositor
Cell constants a, b, c, α , β , γ	183.66Å 120.35Å 55.72Å 90.00° 107.49° 90.00°	Depositor
Resolution (Å)	99.01 – 2.40 33.64 – 2.40	Depositor EDS
% Data completeness (in resolution range)	98.5 (99.01-2.40) 97.7 (33.64-2.40)	Depositor EDS
R_{merge}	0.18	Depositor
R_{sym}	(Not available)	Depositor
$\langle I/\sigma(I) \rangle$ ¹	1.41 (at 2.39Å)	Xtriage
Refinement program	REFMAC	Depositor
R, R_{free}	0.225 , 0.268 0.219 , 0.241	Depositor DCC
R_{free} test set	3493 reflections (8.52%)	DCC
Wilson B-factor (Å ²)	50.1	Xtriage
Anisotropy	0.041	Xtriage
Bulk solvent k_{sol} (e/Å ³), B_{sol} (Å ²)	0.30 , 22.4	EDS
L-test for twinning ²	$\langle L \rangle = 0.50$, $\langle L^2 \rangle = 0.34$	Xtriage
Estimated twinning fraction	0.479 for -h-2*k,l	Xtriage
F_o, F_c correlation	0.95	EDS
Total number of atoms	7798	wwPDB-VP
Average B, all atoms (Å ²)	50.0	wwPDB-VP

Xtriage's analysis on translational NCS is as follows: *The largest off-origin peak in the Patterson function is 4.76% of the height of the origin peak. No significant pseudotranslation is detected.*

¹Intensities estimated from amplitudes.

²Theoretical values of $\langle |L| \rangle$, $\langle L^2 \rangle$ for acentric reflections are 0.5, 0.333 respectively for untwinned datasets, and 0.375, 0.2 for perfectly twinned datasets.

5 Model quality ⓘ

5.1 Standard geometry ⓘ

Bond lengths and bond angles in the following residue types are not validated in this section: BU1, 6OX

The Z score for a bond length (or angle) is the number of standard deviations the observed value is removed from the expected value. A bond length (or angle) with $|Z| > 5$ is considered an outlier worth inspection. RMSZ is the root-mean-square of all Z scores of the bond lengths (or angles).

Mol	Chain	Bond lengths		Bond angles	
		RMSZ	# Z >5	RMSZ	# Z >5
1	A	1.22	8/1897 (0.4%)	1.17	12/2562 (0.5%)
1	B	1.28	6/1915 (0.3%)	1.24	19/2588 (0.7%)
1	C	1.18	3/1921 (0.2%)	1.19	15/2596 (0.6%)
1	D	1.24	4/1889 (0.2%)	1.25	16/2551 (0.6%)
All	All	1.23	21/7622 (0.3%)	1.21	62/10297 (0.6%)

Chiral center outliers are detected by calculating the chiral volume of a chiral center and verifying if the center is modelled as a planar moiety or with the opposite hand. A planarity outlier is detected by checking planarity of atoms in a peptide group, atoms in a mainchain group or atoms of a sidechain that are expected to be planar.

Mol	Chain	#Chirality outliers	#Planarity outliers
1	D	0	1

The worst 5 of 21 bond length outliers are listed below:

Mol	Chain	Res	Type	Atoms	Z	Observed(Å)	Ideal(Å)
1	B	238	CYS	CB-SG	-10.70	1.64	1.82
1	A	401	GLU	CD-OE2	8.00	1.34	1.25
1	A	273	GLU	CG-CD	6.22	1.61	1.51
1	A	355	GLU	CG-CD	6.18	1.61	1.51
1	B	355	GLU	CG-CD	5.85	1.60	1.51

The worst 5 of 62 bond angle outliers are listed below:

Mol	Chain	Res	Type	Atoms	Z	Observed(°)	Ideal(°)
1	B	373	LEU	CB-CG-CD2	-8.35	96.80	111.00
1	D	314	LEU	CA-CB-CG	8.02	133.74	115.30
1	C	373	LEU	CB-CG-CD2	-7.97	97.46	111.00
1	A	373	LEU	CB-CG-CD2	-7.83	97.68	111.00

Continued on next page...

Continued from previous page...

Mol	Chain	Res	Type	Atoms	Z	Observed(°)	Ideal(°)
1	D	361	ARG	NE-CZ-NH1	7.55	124.07	120.30

There are no chirality outliers.

All (1) planarity outliers are listed below:

Mol	Chain	Res	Type	Group
1	D	262	ASP	Peptide

5.2 Too-close contacts [i](#)

In the following table, the Non-H and H(model) columns list the number of non-hydrogen atoms and hydrogen atoms in the chain respectively. The H(added) column lists the number of hydrogen atoms added and optimized by MolProbity. The Clashes column lists the number of clashes within the asymmetric unit, whereas Symm-Clashes lists symmetry related clashes.

Mol	Chain	Non-H	H(model)	H(added)	Clashes	Symm-Clashes
1	A	1862	0	1895	94	0
1	B	1876	0	1904	101	0
1	C	1883	0	1904	121	0
1	D	1855	0	1887	100	0
2	A	40	0	0	4	0
2	B	40	0	0	5	0
2	C	40	0	0	4	0
2	D	40	0	0	4	0
3	B	6	0	10	1	0
3	D	6	0	10	5	0
4	A	35	0	0	1	0
4	B	37	0	0	1	0
4	C	37	0	0	3	0
4	D	41	0	0	1	0
All	All	7798	0	7610	368	0

The all-atom clashscore is defined as the number of clashes found per 1000 atoms (including hydrogen atoms). The all-atom clashscore for this structure is 24.

The worst 5 of 368 close contacts within the same asymmetric unit are listed below, sorted by their clash magnitude.

Atom-1	Atom-2	Interatomic distance (Å)	Clash overlap (Å)
2:B:501:6OX:CL2	2:B:501:6OX:C28	2.11	1.35

Continued on next page...

Continued from previous page...

Atom-1	Atom-2	Interatomic distance (Å)	Clash overlap (Å)
2:D:501:6OX:C28	2:D:501:6OX:CL2	2.17	1.29
1:D:341:HIS:CE1	1:D:347:VAL:HG23	1.79	1.18
1:C:408:ARG:HH22	1:D:408:ARG:NH2	1.43	1.14
1:A:261:ARG:NH2	4:A:601:HOH:O	1.83	1.11

There are no symmetry-related clashes.

5.3 Torsion angles [i](#)

5.3.1 Protein backbone [i](#)

In the following table, the Percentiles column shows the percent Ramachandran outliers of the chain as a percentile score with respect to all X-ray entries followed by that with respect to entries of similar resolution.

The Analysed column shows the number of residues for which the backbone conformation was analysed, and the total number of residues.

Mol	Chain	Analysed	Favoured	Allowed	Outliers	Percentiles	
1	A	222/264 (84%)	197 (89%)	17 (8%)	8 (4%)	4	3
1	B	225/264 (85%)	209 (93%)	14 (6%)	2 (1%)	21	30
1	C	224/264 (85%)	202 (90%)	15 (7%)	7 (3%)	5	4
1	D	221/264 (84%)	202 (91%)	12 (5%)	7 (3%)	5	4
All	All	892/1056 (84%)	810 (91%)	58 (6%)	24 (3%)	6	6

5 of 24 Ramachandran outliers are listed below:

Mol	Chain	Res	Type
1	A	332	ASP
1	A	444	LEU
1	A	447	LYS
1	C	260	SER
1	C	261	ARG

5.3.2 Protein sidechains [i](#)

In the following table, the Percentiles column shows the percent sidechain outliers of the chain as a percentile score with respect to all X-ray entries followed by that with respect to entries of similar resolution.

The Analysed column shows the number of residues for which the sidechain conformation was analysed, and the total number of residues.

Mol	Chain	Analysed	Rotameric	Outliers	Percentiles	
1	A	202/233 (87%)	172 (85%)	30 (15%)	4	4
1	B	203/233 (87%)	165 (81%)	38 (19%)	2	2
1	C	204/233 (88%)	169 (83%)	35 (17%)	2	3
1	D	201/233 (86%)	166 (83%)	35 (17%)	2	2
All	All	810/932 (87%)	672 (83%)	138 (17%)	2	3

5 of 138 residues with a non-rotameric sidechain are listed below:

Mol	Chain	Res	Type
1	B	429	ARG
1	C	309	ILE
1	D	422	LEU
1	B	443	ARG
1	C	248	LYS

Some sidechains can be flipped to improve hydrogen bonding and reduce clashes. 5 of 34 such sidechains are listed below:

Mol	Chain	Res	Type
1	B	341	HIS
1	C	239	ASN
1	D	346	GLN
1	B	435	HIS
1	A	387	GLN

5.3.3 RNA ⓘ

There are no RNA molecules in this entry.

5.4 Non-standard residues in protein, DNA, RNA chains ⓘ

There are no non-standard protein/DNA/RNA residues in this entry.

5.5 Carbohydrates ⓘ

There are no carbohydrates in this entry.

5.6 Ligand geometry

6 ligands are modelled in this entry.

In the following table, the Counts columns list the number of bonds (or angles) for which Mogul statistics could be retrieved, the number of bonds (or angles) that are observed in the model and the number of bonds (or angles) that are defined in the chemical component dictionary. The Link column lists molecule types, if any, to which the group is linked. The Z score for a bond length (or angle) is the number of standard deviations the observed value is removed from the expected value. A bond length (or angle) with $|Z| > 2$ is considered an outlier worth inspection. RMSZ is the root-mean-square of all Z scores of the bond lengths (or angles).

Mol	Type	Chain	Res	Link	Bond lengths			Bond angles		
					Counts	RMSZ	# Z > 2	Counts	RMSZ	# Z > 2
2	6OX	A	501	-	37,43,43	1.87	7 (18%)	53,68,68	2.36	17 (32%)
2	6OX	B	501	-	37,43,43	1.66	7 (18%)	53,68,68	2.71	23 (43%)
3	BU1	B	502	-	5,5,5	0.59	0	4,4,4	0.54	0
2	6OX	C	501	-	37,43,43	1.34	5 (13%)	53,68,68	2.01	14 (26%)
2	6OX	D	501	-	37,43,43	1.69	8 (21%)	53,68,68	2.59	18 (33%)
3	BU1	D	502	-	5,5,5	0.30	0	4,4,4	1.27	0

In the following table, the Chirals column lists the number of chiral outliers, the number of chiral centers analysed, the number of these observed in the model and the number defined in the chemical component dictionary. Similar counts are reported in the Torsion and Rings columns. '-' means no outliers of that kind were identified.

Mol	Type	Chain	Res	Link	Chirals	Torsions	Rings
2	6OX	A	501	-	-	0/28/34/34	0/4/4/4
2	6OX	B	501	-	-	1/28/34/34	0/4/4/4
3	BU1	B	502	-	-	0/3/3/3	0/0/0/0
2	6OX	C	501	-	-	0/28/34/34	0/4/4/4
2	6OX	D	501	-	-	0/28/34/34	0/4/4/4
3	BU1	D	502	-	-	0/3/3/3	0/0/0/0

The worst 5 of 27 bond length outliers are listed below:

Mol	Chain	Res	Type	Atoms	Z	Observed(Å)	Ideal(Å)
2	A	501	6OX	C22-S1	-6.62	1.68	1.77
2	B	501	6OX	C7-C12	-4.24	1.38	1.49
2	B	501	6OX	C17-N2	-4.16	1.34	1.39
2	A	501	6OX	C7-C12	-4.16	1.38	1.49
2	D	501	6OX	C17-N2	-4.10	1.34	1.39

The worst 5 of 72 bond angle outliers are listed below:

Mol	Chain	Res	Type	Atoms	Z	Observed(°)	Ideal(°)
2	D	501	6OX	C5-C13-N1	-8.46	116.27	123.02
2	B	501	6OX	C5-C13-N1	-7.24	117.24	123.02
2	C	501	6OX	F2-C27-C14	-6.53	117.19	121.19
2	B	501	6OX	C29-C5-C4	-6.46	97.61	111.28
2	B	501	6OX	C28-C5-C13	-5.69	100.85	110.57

There are no chirality outliers.

All (1) torsion outliers are listed below:

Mol	Chain	Res	Type	Atoms
2	B	501	6OX	C23-C22-S1-C25

There are no ring outliers.

6 monomers are involved in 23 short contacts:

Mol	Chain	Res	Type	Clashes	Symm-Clashes
2	A	501	6OX	4	0
2	B	501	6OX	5	0
3	B	502	BU1	1	0
2	C	501	6OX	4	0
2	D	501	6OX	4	0
3	D	502	BU1	5	0

5.7 Other polymers [i](#)

There are no such residues in this entry.

5.8 Polymer linkage issues [i](#)

There are no chain breaks in this entry.

6 Fit of model and data [i](#)

6.1 Protein, DNA and RNA chains [i](#)

In the following table, the column labelled ‘#RSRZ> 2’ contains the number (and percentage) of RSRZ outliers, followed by percent RSRZ outliers for the chain as percentile scores relative to all X-ray entries and entries of similar resolution. The OWAB column contains the minimum, median, 95th percentile and maximum values of the occupancy-weighted average B-factor per residue. The column labelled ‘Q< 0.9’ lists the number of (and percentage) of residues with an average occupancy less than 0.9.

Mol	Chain	Analysed	<RSRZ>	#RSRZ>2	OWAB(Å ²)	Q<0.9
1	A	228/264 (86%)	-0.07	3 (1%) 79 79	28, 47, 83, 95	0
1	B	230/264 (87%)	-0.17	4 (1%) 73 72	30, 46, 75, 85	0
1	C	231/264 (87%)	-0.04	6 (2%) 59 58	27, 47, 86, 99	0
1	D	227/264 (85%)	-0.15	0 100 100	29, 46, 70, 83	0
All	All	916/1056 (86%)	-0.10	13 (1%) 78 77	27, 47, 79, 99	0

The worst 5 of 13 RSRZ outliers are listed below:

Mol	Chain	Res	Type	RSRZ
1	C	444	LEU	4.7
1	A	444	LEU	3.7
1	C	443	ARG	3.4
1	C	241	ARG	3.0
1	C	252	TRP	3.0

6.2 Non-standard residues in protein, DNA, RNA chains [i](#)

There are no non-standard protein/DNA/RNA residues in this entry.

6.3 Carbohydrates [i](#)

There are no carbohydrates in this entry.

6.4 Ligands [i](#)

In the following table, the Atoms column lists the number of modelled atoms in the group and the number defined in the chemical component dictionary. LLDF column lists the quality of electron density of the group with respect to its neighbouring residues in protein, DNA or RNA chains. The B-factors column lists the minimum, median, 95th percentile and maximum values of B factors

of atoms in the group. The column labelled 'Q< 0.9' lists the number of atoms with occupancy less than 0.9.

Mol	Type	Chain	Res	Atoms	RSCC	RSR	LLDF	B-factors(\AA^2)	Q<0.9
3	BU1	B	502	6/6	0.93	0.21	2.77	46,49,58,62	0
3	BU1	D	502	6/6	0.95	0.19	1.26	44,46,50,55	0
2	6OX	A	501	40/40	0.92	0.18	0.53	36,56,76,78	0
2	6OX	B	501	40/40	0.97	0.15	-0.35	40,47,65,68	0
2	6OX	D	501	40/40	0.95	0.15	-0.47	35,48,60,64	0
2	6OX	C	501	40/40	0.96	0.14	-1.02	44,58,69,72	0

6.5 Other polymers [i](#)

There are no such residues in this entry.