



Full wwPDB X-ray Structure Validation Report ⓘ

Jan 31, 2016 – 08:23 PM GMT

PDB ID : 1K3Y
Title : Crystal Structure Analysis of human Glutathione S-transferase with S-hexyl glutathione and glycerol at 1.3 Angstrom
Authors : Le Trong, I.; Stenkamp, R.E.; Ibarra, C.; Atkins, W.M.; Adman, E.T.
Deposited on : 2001-10-04
Resolution : 1.30 Å(reported)

This is a Full wwPDB X-ray Structure Validation Report for a publicly released PDB entry.
We welcome your comments at validation@mail.wwpdb.org
A user guide is available at
<http://wwpdb.org/validation/2016/XrayValidationReportHelp>
with specific help available everywhere you see the ⓘ symbol.

The following versions of software and data (see [references ⓘ](#)) were used in the production of this report:

MolProbity : 4.02b-467
Mogul : 1.7 (RC4), CSD as536be (2015)
Xtriage (Phenix) : 1.9-1692
EDS : rb-20026688
Percentile statistics : 20151230.v01 (using entries in the PDB archive December 30th 2015)
Refmac : 5.8.0135
CCP4 : 6.5.0
Ideal geometry (proteins) : Engh & Huber (2001)
Ideal geometry (DNA, RNA) : Parkinson et al. (1996)
Validation Pipeline (wwPDB-VP) : trunk26865

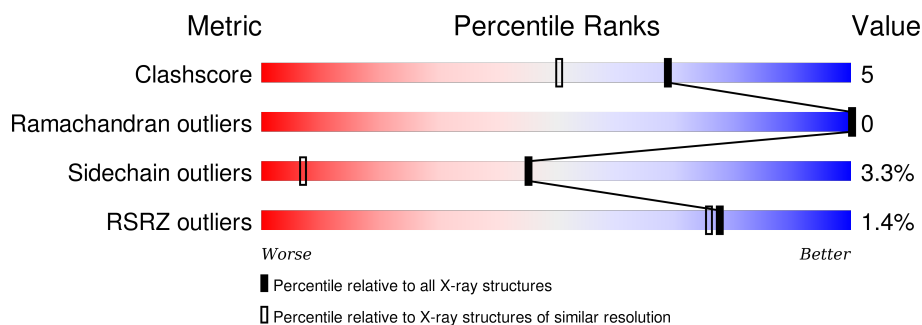
1 Overall quality at a glance

The following experimental techniques were used to determine the structure:

X-RAY DIFFRACTION

The reported resolution of this entry is 1.30 Å.

Percentile scores (ranging between 0-100) for global validation metrics of the entry are shown in the following graphic. The table shows the number of entries on which the scores are based.



Metric	Whole archive (#Entries)	Similar resolution (#Entries, resolution range(Å))
Clashscore	102246	1031 (1.32-1.28)
Ramachandran outliers	100387	1504 (1.34-1.26)
Sidechain outliers	100360	1503 (1.34-1.26)
RSRZ outliers	91569	1476 (1.34-1.26)

The table below summarises the geometric issues observed across the polymeric chains and their fit to the electron density. The red, orange, yellow and green segments on the lower bar indicate the fraction of residues that contain outliers for ≥ 3 , 2, 1 and 0 types of geometric quality criteria. A grey segment represents the fraction of residues that are not modelled. The numeric value for each fraction is indicated below the corresponding segment, with a dot representing fractions $\leq 5\%$. The upper red bar (where present) indicates the fraction of residues that have poor fit to the electron density. The numeric value is given above the bar.

Mol	Chain	Length	Quality of chain
1	A	221	<div> <div>2%</div> <div>83%</div> <div>15%</div> <div>.</div> </div>
1	B	221	<div> <div>%</div> <div>82%</div> <div>16%</div> <div>.</div> </div>

The following table lists non-polymeric compounds, carbohydrate monomers and non-standard residues in protein, DNA, RNA chains that are outliers for geometric or electron-density-fit criteria:

Mol	Type	Chain	Res	Chirality	Geometry	Clashes	Electron density
3	GOL	A	3001	-	-	-	X
3	GOL	A	3002	-	-	-	X

Continued on next page...

Continued from previous page...

Mol	Type	Chain	Res	Chirality	Geometry	Clashes	Electron density
3	GOL	B	3003	-	-	-	X

2 Entry composition [i](#)

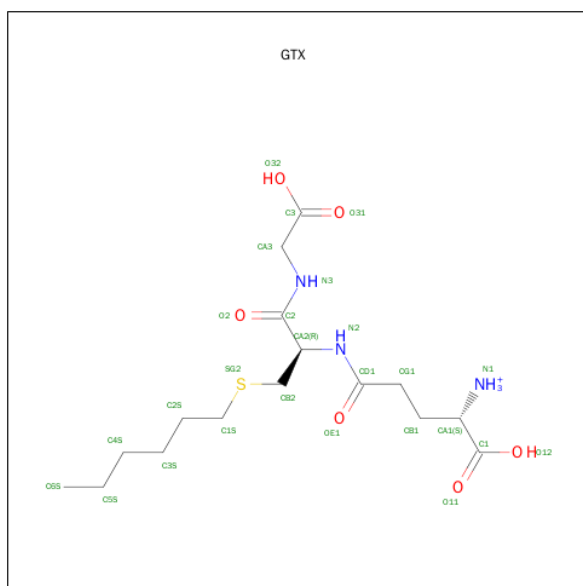
There are 4 unique types of molecules in this entry. The entry contains 4313 atoms, of which 0 are hydrogens and 0 are deuteriums.

In the tables below, the ZeroOcc column contains the number of atoms modelled with zero occupancy, the AltConf column contains the number of residues with at least one atom in alternate conformation and the Trace column contains the number of residues modelled with at most 2 atoms.

- Molecule 1 is a protein called GLUTATHIONE S-TRANSFERASE A1.

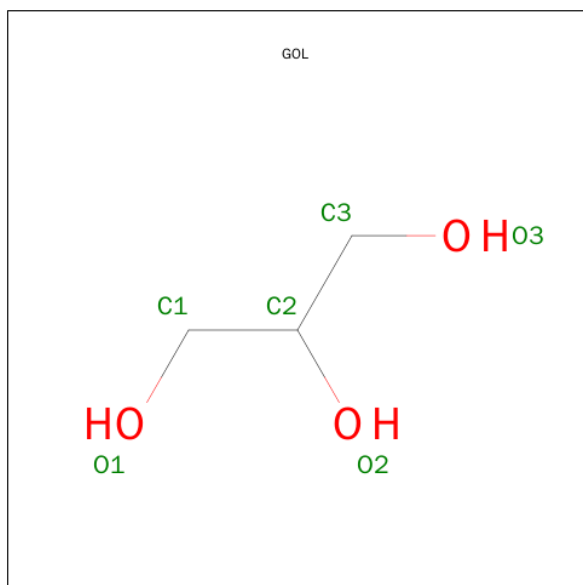
Mol	Chain	Residues	Atoms					ZeroOcc	AltConf	Trace
1	A	221	Total	C	N	O	S	4	9	0
			1827	1185	300	330	12			
1	B	221	Total	C	N	O	S	0	6	0
			1814	1176	302	326	10			

- Molecule 2 is S-HEXYLGLUTATHIONE (three-letter code: GTX) (formula: $C_{16}H_{30}N_3O_6S$).



Mol	Chain	Residues	Atoms					ZeroOcc	AltConf
2	A	1	Total	C	N	O	S	0	0
			26	16	3	6	1		
2	B	1	Total	C	N	O	S	0	0
			26	16	3	6	1		

- Molecule 3 is GLYCEROL (three-letter code: GOL) (formula: $C_3H_8O_3$).



Mol	Chain	Residues	Atoms			ZeroOcc	AltConf
3	A	1	Total	C	O	0	0
			6	3	3		
3	A	1	Total	C	O	0	0
			6	3	3		
3	B	1	Total	C	O	0	0
			6	3	3		

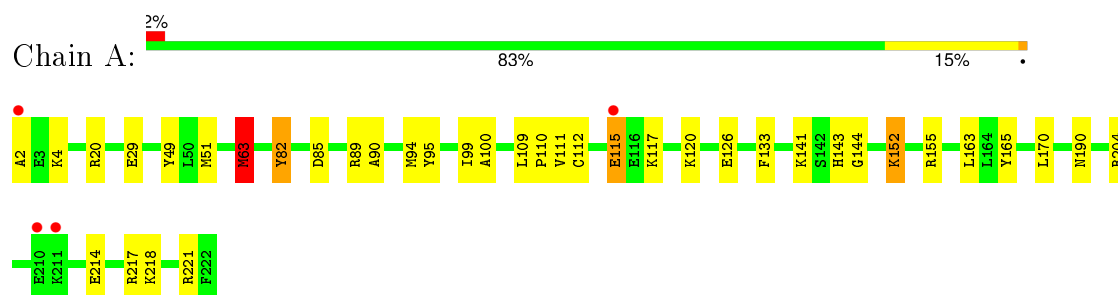
- Molecule 4 is water.

Mol	Chain	Residues	Atoms		ZeroOcc	AltConf
4	A	287	Total	O	0	0
			287	287		
4	B	315	Total	O	0	0
			315	315		

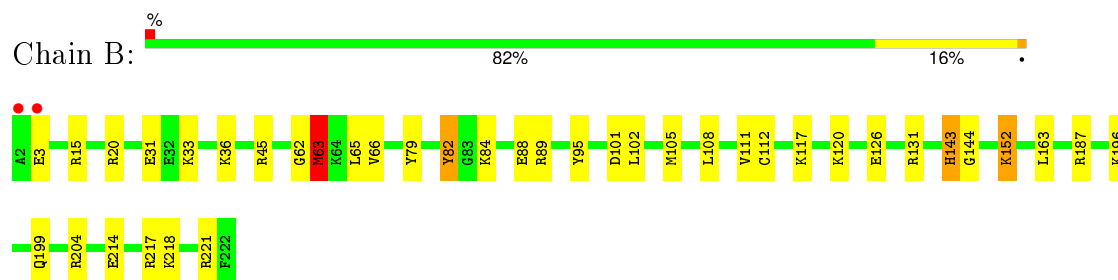
3 Residue-property plots

These plots are drawn for all protein, RNA and DNA chains in the entry. The first graphic for a chain summarises the proportions of errors displayed in the second graphic. The second graphic shows the sequence view annotated by issues in geometry and electron density. Residues are color-coded according to the number of geometric quality criteria for which they contain at least one outlier: green = 0, yellow = 1, orange = 2 and red = 3 or more. A red dot above a residue indicates a poor fit to the electron density ($RSRZ > 2$). Stretches of 2 or more consecutive residues without any outlier are shown as a green connector. Residues present in the sample, but not in the model, are shown in grey.

• Molecule 1: GLUTATHIONE S-TRANSFERASE A1



• Molecule 1: GLUTATHIONE S-TRANSFERASE A1



4 Data and refinement statistics

Property	Value	Source
Space group	C 1 2 1	Depositor
Cell constants a, b, c, α , β , γ	99.38Å 93.77Å 51.63Å 90.00° 93.39° 90.00°	Depositor
Resolution (Å)	10.00 – 1.30 9.98 – 1.30	Depositor EDS
% Data completeness (in resolution range)	94.8 (10.00-1.30) 89.8 (9.98-1.30)	Depositor EDS
R_{merge}	0.03	Depositor
R_{sym}	(Not available)	Depositor
$\langle I/\sigma(I) \rangle$ ¹	3.10 (at 1.30Å)	Xtriage
Refinement program	SHELXL-97	Depositor
R, R_{free}	0.137 , 0.205 0.143 , (Not available)	Depositor DCC
R_{free} test set	No test flags present.	DCC
Wilson B-factor (Å ²)	12.8	Xtriage
Anisotropy	0.051	Xtriage
Bulk solvent k_{sol} (e/Å ³), B_{sol} (Å ²)	0.42 , 71.3	EDS
Estimated twinning fraction	No twinning to report.	Xtriage
L-test for twinning ²	$\langle L \rangle = 0.50$, $\langle L^2 \rangle = 0.34$	Xtriage
Outliers	0 of 109838 reflections	Xtriage
F_o, F_c correlation	0.98	EDS
Total number of atoms	4313	wwPDB-VP
Average B, all atoms (Å ²)	22.0	wwPDB-VP

Xtriage's analysis on translational NCS is as follows: *The largest off-origin peak in the Patterson function is 7.76% of the height of the origin peak. No significant pseudotranslation is detected.*

¹Intensities estimated from amplitudes.

²Theoretical values of $\langle |L| \rangle$, $\langle L^2 \rangle$ for acentric reflections are 0.5, 0.375 respectively for untwinned datasets, and 0.333, 0.2 for perfectly twinned datasets.

5 Model quality

5.1 Standard geometry

Bond lengths and bond angles in the following residue types are not validated in this section: GTX, GOL

The Z score for a bond length (or angle) is the number of standard deviations the observed value is removed from the expected value. A bond length (or angle) with $|Z| > 5$ is considered an outlier worth inspection. RMSZ is the root-mean-square of all Z scores of the bond lengths (or angles).

Mol	Chain	Bond lengths		Bond angles	
		RMSZ	# Z >5	RMSZ	# Z >5
1	A	0.61	0/1902	1.30	28/2552 (1.1%)
1	B	0.64	0/1880	1.34	24/2523 (1.0%)
All	All	0.62	0/3782	1.32	52/5075 (1.0%)

There are no bond length outliers.

All (52) bond angle outliers are listed below:

Mol	Chain	Res	Type	Atoms	Z	Observed(°)	Ideal(°)
1	B	204	ARG	NE-CZ-NH1	12.91	126.75	120.30
1	B	187	ARG	NE-CZ-NH1	12.28	126.44	120.30
1	B	187	ARG	NE-CZ-NH2	-11.16	114.72	120.30
1	A	217	ARG	NE-CZ-NH1	10.04	125.32	120.30
1	A	49	TYR	CB-CG-CD1	9.91	126.94	121.00
1	A	143	HIS	CG-ND1-CE1	9.07	120.90	108.20
1	B	217	ARG	NE-CZ-NH1	8.92	124.76	120.30
1	A	204	ARG	NE-CZ-NH1	8.76	124.68	120.30
1	A	204	ARG	NE-CZ-NH2	-8.75	115.93	120.30
1	A	49	TYR	CB-CG-CD2	-8.14	116.11	121.00
1	B	144	GLY	C-N-CA	7.92	141.49	121.70
1	A	152	LYS	CA-CB-CG	7.46	129.82	113.40
1	B	131	ARG	NE-CZ-NH1	-7.01	116.79	120.30
1	B	62	GLY	O-C-N	-7.01	111.48	122.70
1	A	165	TYR	CB-CG-CD2	7.00	125.20	121.00
1	A	20	ARG	NE-CZ-NH1	6.96	123.78	120.30
1	B	45	ARG	NE-CZ-NH2	-6.95	116.83	120.30
1	A	82	TYR	CB-CG-CD1	6.87	125.12	121.00
1	A	89	ARG	NE-CZ-NH2	-6.76	116.92	120.30
1	B	15	ARG	NE-CZ-NH1	6.61	123.61	120.30
1	B	204	ARG	NE-CZ-NH2	-6.60	117.00	120.30
1	B	95	TYR	CD1-CE1-CZ	6.55	125.70	119.80

Continued on next page...

Continued from previous page...

Mol	Chain	Res	Type	Atoms	Z	Observed(°)	Ideal(°)
1	B	217	ARG	NE-CZ-NH2	-6.38	117.11	120.30
1	B	152	LYS	CA-CB-CG	6.37	127.41	113.40
1	A	133	PHE	CB-CG-CD1	6.31	125.22	120.80
1	B	79	TYR	CB-CG-CD1	6.24	124.74	121.00
1	B	62	GLY	CA-C-O	6.19	131.74	120.60
1	A	95	TYR	CB-CG-CD1	6.15	124.69	121.00
1	A	170	LEU	CA-CB-CG	6.09	129.31	115.30
1	A	221	ARG	NE-CZ-NH2	6.01	123.30	120.30
1	B	144	GLY	O-C-N	-6.00	113.11	122.70
1	A	144	GLY	C-N-CA	5.97	136.64	121.70
1	B	221	ARG	NE-CZ-NH1	5.93	123.27	120.30
1	B	143	HIS	CG-ND1-CE1	5.77	116.28	108.20
1	B	20	ARG	NE-CZ-NH1	5.72	123.16	120.30
1	B	20	ARG	NE-CZ-NH2	-5.61	117.50	120.30
1	A	217	ARG	NE-CZ-NH2	-5.57	117.52	120.30
1	A	144	GLY	O-C-N	-5.57	113.79	122.70
1	A	143	HIS	ND1-CG-CD2	-5.55	98.23	106.00
1	A	95	TYR	CD1-CE1-CZ	5.52	124.77	119.80
1	A	217	ARG	CD-NE-CZ	5.50	131.31	123.60
1	A	85	ASP	CB-CG-OD1	5.35	123.11	118.30
1	A	95	TYR	CB-CG-CD2	-5.29	117.82	121.00
1	B	63[A]	MET	CG-SD-CE	-5.29	91.74	100.20
1	B	63[B]	MET	CG-SD-CE	-5.29	91.74	100.20
1	A	221	ARG	CD-NE-CZ	5.23	130.92	123.60
1	A	63[A]	MET	CA-CB-CG	5.22	122.18	113.30
1	A	63[B]	MET	CA-CB-CG	5.22	122.18	113.30
1	B	214	GLU	OE1-CD-OE2	-5.22	117.04	123.30
1	A	89	ARG	NE-CZ-NH1	5.12	122.86	120.30
1	B	31	GLU	CA-CB-CG	5.11	124.64	113.40
1	A	155	ARG	O-C-N	-5.04	114.63	122.70

There are no chirality outliers.

There are no planarity outliers.

5.2 Too-close contacts ⓘ

In the following table, the Non-H and H(model) columns list the number of non-hydrogen atoms and hydrogen atoms in the chain respectively. The H(added) column lists the number of hydrogen atoms added and optimized by MolProbity. The Clashes column lists the number of clashes within the asymmetric unit, whereas Symm-Clashes lists symmetry related clashes.

Mol	Chain	Non-H	H(model)	H(added)	Clashes	Symm-Clashes
1	A	1827	0	1896	22	0
1	B	1814	0	1880	16	0
2	A	26	0	28	1	0
2	B	26	0	28	0	0
3	A	12	0	16	1	0
3	B	6	0	8	0	0
4	A	287	0	0	6	0
4	B	315	0	0	12	0
All	All	4313	0	3856	35	0

The all-atom clashscore is defined as the number of clashes found per 1000 atoms (including hydrogen atoms). The all-atom clashscore for this structure is 5.

All (35) close contacts within the same asymmetric unit are listed below, sorted by their clash magnitude.

Atom-1	Atom-2	Interatomic distance (Å)	Clash overlap (Å)
1:A:51[B]:MET:CE	4:B:6487:HOH:O	1.98	1.07
1:B:63[B]:MET:HE3	4:B:6567:HOH:O	1.63	0.98
1:A:63[A]:MET:SD	4:B:6488:HOH:O	2.27	0.91
1:A:63[B]:MET:CE	4:B:6488:HOH:O	2.18	0.90
1:A:63[B]:MET:HE2	4:B:6488:HOH:O	1.74	0.85
1:A:51[B]:MET:HE3	4:B:6487:HOH:O	1.66	0.84
1:A:4:LYS:HE2	1:A:29[B]:GLU:OE2	1.84	0.76
1:A:141:LYS:HD3	4:A:6550:HOH:O	1.90	0.72
1:A:126[B]:GLU:HG2	4:A:6587:HOH:O	1.90	0.70
1:A:115:GLU:HB2	4:A:6598:HOH:O	1.90	0.70
1:B:36:LYS:HE2	4:B:6512:HOH:O	1.93	0.69
1:A:63[B]:MET:HE3	4:B:6488:HOH:O	1.90	0.65
1:A:190:ASN:HB3	4:A:6437:HOH:O	2.00	0.61
1:A:2:ALA:HB3	4:A:6341:HOH:O	2.02	0.59
1:B:3:GLU:HA	4:B:6445:HOH:O	2.01	0.59
1:B:196:LYS:O	1:B:199[A]:GLN:HG2	2.05	0.56
1:B:218:LYS:HG3	4:B:6463:HOH:O	2.09	0.53
1:B:101:ASP:O	1:B:105[A]:MET:HG3	2.08	0.53
1:A:111:VAL:HG13	2:A:5100:GTX:HS61	1.93	0.49
1:B:82:TYR:O	1:B:89:ARG:HG2	2.13	0.49
1:B:84[B]:LYS:HG2	1:B:88:GLU:CD	2.34	0.48
1:B:108:LEU:O	1:B:111:VAL:HG22	2.14	0.47
1:A:94[A]:MET:SD	1:B:66:VAL:HG22	2.55	0.46
1:B:33:LYS:NZ	4:B:6308:HOH:O	2.49	0.45
1:A:51[B]:MET:HE2	4:B:6487:HOH:O	1.94	0.44
1:A:29[A]:GLU:HG3	4:A:6351:HOH:O	2.18	0.44

Continued on next page...

Continued from previous page...

Atom-1	Atom-2	Interatomic distance (Å)	Clash overlap (Å)
1:A:90:ALA:HB1	1:B:65:LEU:HD21	2.00	0.43
1:A:214:GLU:HG3	1:A:218:LYS:NZ	2.35	0.41
1:A:100:ALA:HB2	3:A:3001:GOL:H31	2.02	0.41
1:A:94[B]:MET:SD	1:B:65:LEU:HD23	2.61	0.41
1:B:112:CYS:SG	1:B:120:LYS:HD3	2.60	0.41
1:A:99:ILE:HG23	1:A:163:LEU:HD22	2.01	0.41
1:A:109:LEU:N	1:A:110:PRO:HD2	2.36	0.40
1:B:102:LEU:HD23	1:B:163:LEU:HD21	2.04	0.40

There are no symmetry-related clashes.

5.3 Torsion angles [i](#)

5.3.1 Protein backbone [i](#)

In the following table, the Percentiles column shows the percent Ramachandran outliers of the chain as a percentile score with respect to all X-ray entries followed by that with respect to entries of similar resolution.

The Analysed column shows the number of residues for which the backbone conformation was analysed, and the total number of residues.

Mol	Chain	Analysed	Favoured	Allowed	Outliers	Percentiles	
1	A	228/221 (103%)	224 (98%)	4 (2%)	0	100	100
1	B	225/221 (102%)	219 (97%)	6 (3%)	0	100	100
All	All	453/442 (102%)	443 (98%)	10 (2%)	0	100	100

There are no Ramachandran outliers to report.

5.3.2 Protein sidechains [i](#)

In the following table, the Percentiles column shows the percent sidechain outliers of the chain as a percentile score with respect to all X-ray entries followed by that with respect to entries of similar resolution.

The Analysed column shows the number of residues for which the sidechain conformation was analysed, and the total number of residues.

Mol	Chain	Analysed	Rotameric	Outliers	Percentiles	
1	A	204/195 (105%)	196 (96%)	8 (4%)	39	4

Continued on next page...

Continued from previous page...

Mol	Chain	Analysed	Rotameric	Outliers	Percentiles
1	B	201/195 (103%)	194 (96%)	7 (4%)	43 6
All	All	405/390 (104%)	390 (96%)	15 (4%)	45 5

All (15) residues with a non-rotameric sidechain are listed below:

Mol	Chain	Res	Type
1	A	63[A]	MET
1	A	63[B]	MET
1	A	82	TYR
1	A	112	CYS
1	A	115	GLU
1	A	117	LYS
1	A	120	LYS
1	A	152	LYS
1	B	63[A]	MET
1	B	63[B]	MET
1	B	82	TYR
1	B	117	LYS
1	B	126	GLU
1	B	143	HIS
1	B	152	LYS

Some sidechains can be flipped to improve hydrogen bonding and reduce clashes. All (1) such sidechains are listed below:

Mol	Chain	Res	Type
1	A	199	GLN

5.3.3 RNA ⓘ

There are no RNA molecules in this entry.

5.4 Non-standard residues in protein, DNA, RNA chains ⓘ

There are no non-standard protein/DNA/RNA residues in this entry.

5.5 Carbohydrates ⓘ

There are no carbohydrates in this entry.

5.6 Ligand geometry

5 ligands are modelled in this entry.

In the following table, the Counts columns list the number of bonds (or angles) for which Mogul statistics could be retrieved, the number of bonds (or angles) that are observed in the model and the number of bonds (or angles) that are defined in the chemical component dictionary. The Link column lists molecule types, if any, to which the group is linked. The Z score for a bond length (or angle) is the number of standard deviations the observed value is removed from the expected value. A bond length (or angle) with $|Z| > 2$ is considered an outlier worth inspection. RMSZ is the root-mean-square of all Z scores of the bond lengths (or angles).

Mol	Type	Chain	Res	Link	Bond lengths			Bond angles		
					Counts	RMSZ	$\# Z > 2$	Counts	RMSZ	$\# Z > 2$
3	GOL	A	3001	-	5,5,5	0.94	0	5,5,5	2.51	2 (40%)
3	GOL	A	3002	-	5,5,5	0.59	0	5,5,5	2.00	1 (20%)
2	GTX	A	5100	-	19,25,25	1.26	2 (10%)	23,30,30	1.68	9 (39%)
3	GOL	B	3003	-	5,5,5	0.30	0	5,5,5	1.07	0
2	GTX	B	5200	-	19,25,25	1.31	2 (10%)	23,30,30	2.10	7 (30%)

In the following table, the Chirals column lists the number of chiral outliers, the number of chiral centers analysed, the number of these observed in the model and the number defined in the chemical component dictionary. Similar counts are reported in the Torsion and Rings columns. '-' means no outliers of that kind were identified.

Mol	Type	Chain	Res	Link	Chirals	Torsions	Rings
3	GOL	A	3001	-	-	0/4/4/4	0/0/0/0
3	GOL	A	3002	-	-	0/4/4/4	0/0/0/0
2	GTX	A	5100	-	-	0/24/30/30	0/0/0/0
3	GOL	B	3003	-	-	0/4/4/4	0/0/0/0
2	GTX	B	5200	-	-	0/24/30/30	0/0/0/0

All (4) bond length outliers are listed below:

Mol	Chain	Res	Type	Atoms	Z	Observed(Å)	Ideal(Å)
2	B	5200	GTX	CD1-N2	2.73	1.39	1.34
2	A	5100	GTX	CD1-N2	2.95	1.40	1.34
2	A	5100	GTX	C2-N3	3.72	1.41	1.33
2	B	5200	GTX	C2-N3	3.99	1.42	1.33

All (19) bond angle outliers are listed below:

Mol	Chain	Res	Type	Atoms	Z	Observed(°)	Ideal(°)
2	B	5200	GTX	CA3-N3-C2	-4.93	115.56	122.34

Continued on next page...

Continued from previous page...

Mol	Chain	Res	Type	Atoms	Z	Observed(°)	Ideal(°)
3	A	3001	GOL	O2-C2-C3	-4.88	86.25	108.65
2	B	5200	GTX	CA2-C2-N3	-4.03	108.81	116.72
2	A	5100	GTX	CA2-C2-N3	-3.05	110.73	116.72
2	B	5200	GTX	CG1-CB1-CA1	-2.95	108.92	114.03
2	A	5100	GTX	CG1-CD1-N2	-2.91	111.09	115.83
2	A	5100	GTX	CA3-N3-C2	-2.55	118.83	122.34
2	A	5100	GTX	CG1-CB1-CA1	-2.54	109.63	114.03
2	B	5200	GTX	OE1-CD1-N2	-2.35	119.03	123.01
2	A	5100	GTX	C2-CA2-N2	-2.29	104.80	111.26
2	A	5100	GTX	CB1-CA1-N1	-2.25	107.47	110.79
2	B	5200	GTX	C2-CA2-N2	-2.06	105.47	111.26
2	A	5100	GTX	CB1-CG1-CD1	-2.03	108.44	113.27
2	A	5100	GTX	OE1-CD1-CG1	2.34	126.03	121.98
3	A	3001	GOL	C3-C2-C1	2.34	120.31	111.12
2	A	5100	GTX	O2-C2-CA2	2.76	126.47	120.36
2	B	5200	GTX	O2-C2-CA2	3.44	127.97	120.36
2	B	5200	GTX	OE1-CD1-CG1	3.53	128.07	121.98
3	A	3002	GOL	O2-C2-C3	4.28	128.28	108.65

There are no chirality outliers.

There are no torsion outliers.

There are no ring outliers.

2 monomers are involved in 2 short contacts:

Mol	Chain	Res	Type	Clashes	Symm-Clashes
3	A	3001	GOL	1	0
2	A	5100	GTX	1	0

5.7 Other polymers [i](#)

There are no such residues in this entry.

5.8 Polymer linkage issues [i](#)

There are no chain breaks in this entry.

6 Fit of model and data [i](#)

6.1 Protein, DNA and RNA chains [i](#)

In the following table, the column labelled ‘#RSRZ> 2’ contains the number (and percentage) of RSRZ outliers, followed by percent RSRZ outliers for the chain as percentile scores relative to all X-ray entries and entries of similar resolution. The OWAB column contains the minimum, median, 95th percentile and maximum values of the occupancy-weighted average B-factor per residue. The column labelled ‘Q< 0.9’ lists the number of (and percentage) of residues with an average occupancy less than 0.9.

Mol	Chain	Analysed	<RSRZ>	#RSRZ>2	OWAB(Å ²)	Q<0.9
1	A	221/221 (100%)	-0.32	4 (1%) 71 69	10, 17, 40, 76	2 (0%)
1	B	221/221 (100%)	-0.33	2 (0%) 85 85	11, 19, 33, 90	0
All	All	442/442 (100%)	-0.33	6 (1%) 78 76	10, 18, 36, 90	2 (0%)

All (6) RSRZ outliers are listed below:

Mol	Chain	Res	Type	RSRZ
1	B	2	ALA	19.0
1	A	2	ALA	5.5
1	A	115	GLU	5.0
1	B	3	GLU	3.0
1	A	211	LYS	2.1
1	A	210	GLU	2.1

6.2 Non-standard residues in protein, DNA, RNA chains [i](#)

There are no non-standard protein/DNA/RNA residues in this entry.

6.3 Carbohydrates [i](#)

There are no carbohydrates in this entry.

6.4 Ligands [i](#)

In the following table, the Atoms column lists the number of modelled atoms in the group and the number defined in the chemical component dictionary. LLDF column lists the quality of electron density of the group with respect to its neighbouring residues in protein, DNA or RNA chains. The B-factors column lists the minimum, median, 95th percentile and maximum values of B factors

of atoms in the group. The column labelled 'Q< 0.9' lists the number of atoms with occupancy less than 0.9.

Mol	Type	Chain	Res	Atoms	RSCC	RSR	LLDF	B-factors(\AA^2)	Q<0.9
3	GOL	B	3003	6/6	0.89	0.10	11.37	26,27,32,33	0
3	GOL	A	3001	6/6	0.93	0.10	5.60	17,22,27,32	0
3	GOL	A	3002	6/6	0.92	0.08	4.23	33,34,39,42	0
2	GTX	B	5200	26/26	0.99	0.05	-0.59	11,16,36,38	0
2	GTX	A	5100	26/26	0.99	0.05	-0.75	10,14,40,58	0

6.5 Other polymers [i](#)

There are no such residues in this entry.