



wwPDB X-ray Structure Validation Summary Report ⓘ

Jan 31, 2016 – 08:24 PM GMT

PDB ID : 1K4T
Title : HUMAN DNA TOPOISOMERASE I (70 KDA) IN COMPLEX WITH THE
POISON TOPOTECAN AND COVALENT COMPLEX WITH A 22 BASE
PAIR DNA DUPLEX
Authors : Staker, B.L.; Hjerrild, K.; Feese, M.D.; Behnke, C.A.; Burgin Jr., A.B.; Stewart, L.J.
Deposited on : 2001-10-08
Resolution : 2.10 Å(reported)

This is a wwPDB X-ray Structure Validation Summary Report for a publicly released PDB entry.

We welcome your comments at validation@mail.wwpdb.org

A user guide is available at

<http://wwpdb.org/validation/2016/XrayValidationReportHelp>

with specific help available everywhere you see the ⓘ symbol.

The following versions of software and data (see [references ⓘ](#)) were used in the production of this report:

MolProbity : 4.02b-467
Mogul : 1.7 (RC4), CSD as536be (2015)
Xtriage (Phenix) : 1.9-1692
EDS : rb-20026688
Percentile statistics : 20151230.v01 (using entries in the PDB archive December 30th 2015)
Refmac : 5.8.0135
CCP4 : 6.5.0
Ideal geometry (proteins) : Engh & Huber (2001)
Ideal geometry (DNA, RNA) : Parkinson et al. (1996)
Validation Pipeline (wwPDB-VP) : trunk26865

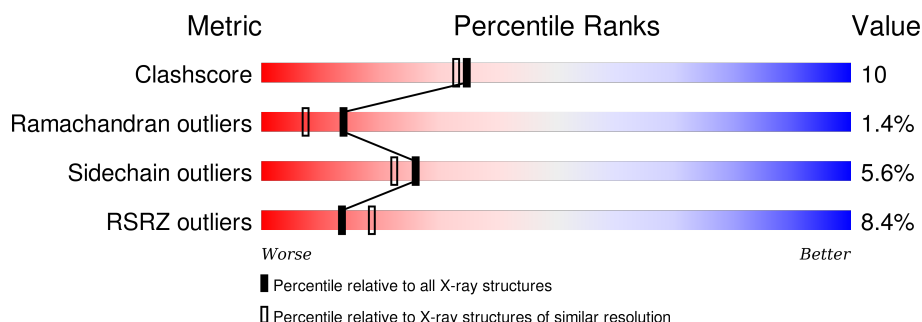
1 Overall quality at a glance

The following experimental techniques were used to determine the structure:

X-RAY DIFFRACTION

The reported resolution of this entry is 2.10 Å.

Percentile scores (ranging between 0-100) for global validation metrics of the entry are shown in the following graphic. The table shows the number of entries on which the scores are based.



Metric	Whole archive (#Entries)	Similar resolution (#Entries, resolution range(Å))
Clashscore	102246	4460 (2.10-2.10)
Ramachandran outliers	100387	4413 (2.10-2.10)
Sidechain outliers	100360	4414 (2.10-2.10)
RSRZ outliers	91569	3948 (2.10-2.10)

The table below summarises the geometric issues observed across the polymeric chains and their fit to the electron density. The red, orange, yellow and green segments on the lower bar indicate the fraction of residues that contain outliers for ≥ 3 , 2, 1 and 0 types of geometric quality criteria. A grey segment represents the fraction of residues that are not modelled. The numeric value for each fraction is indicated below the corresponding segment, with a dot representing fractions $\leq 5\%$. The upper red bar (where present) indicates the fraction of residues that have poor fit to the electron density. The numeric value is given above the bar.

Mol	Chain	Length	Quality of chain
1	B	10	
2	C	12	
3	D	22	
4	A	592	

The following table lists non-polymeric compounds, carbohydrate monomers and non-standard residues in protein, DNA, RNA chains that are outliers for geometric or electron-density-fit criteria:

Mol	Type	Chain	Res	Chirality	Geometry	Clashes	Electron density
8	PG4	A	901	-	-	-	X

2 Entry composition [i](#)

There are 9 unique types of molecules in this entry. The entry contains 5883 atoms, of which 0 are hydrogens and 0 are deuteriums.

In the tables below, the ZeroOcc column contains the number of atoms modelled with zero occupancy, the AltConf column contains the number of residues with at least one atom in alternate conformation and the Trace column contains the number of residues modelled with at most 2 atoms.

- Molecule 1 is a DNA chain called 5'-D(*AP*AP*AP*AP*AP*GP*AP*CP*TP*T)-3'.

Mol	Chain	Residues	Atoms					ZeroOcc	AltConf	Trace
1	B	10	Total	C	N	O	P	0	0	0
			203	99	42	53	9			

- Molecule 2 is a DNA chain called 5'-D(*(TGP)P*GP*AP*AP*AP*AP*AP*TP*TP*TP*TP*T)-3'.

Mol	Chain	Residues	Atoms						ZeroOcc	AltConf	Trace
2	C	12	Total	C	N	O	P	S	0	0	0
			246	120	45	69	11	1			

- Molecule 3 is a DNA chain called 5'-D(*AP*AP*AP*AP*AP*TP*TP*TP*TP*TP*CP*CP*AP*AP*GP*TP*CP*TP*TP*TP*TP*T)-3'.

Mol	Chain	Residues	Atoms					ZeroOcc	AltConf	Trace
3	D	22	Total	C	N	O	P	0	0	0
			443	217	71	134	21			

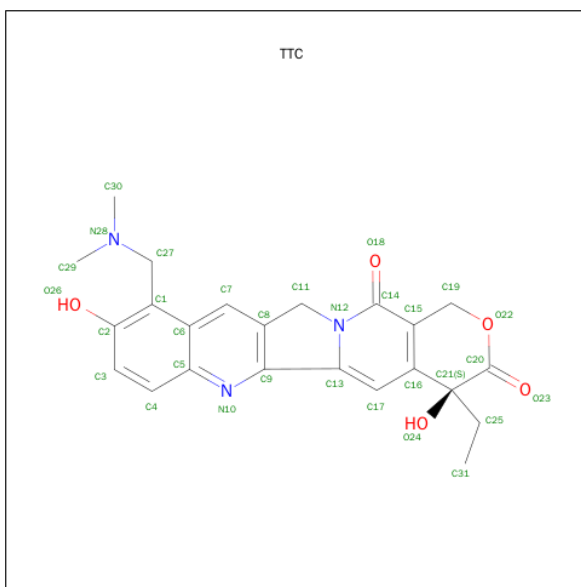
- Molecule 4 is a protein called DNA topoisomerase I.

Mol	Chain	Residues	Atoms						ZeroOcc	AltConf	Trace
4	A	565	Total	C	N	O	P	S	0	0	0
			4687	2980	823	857	1	26			

There is a discrepancy between the modelled and reference sequences:

Chain	Residue	Modelled	Actual	Comment	Reference
A	723	PTR	TYR	MODIFIED RESIDUE	UNP P11387

- Molecule 5 is (S)-10-[(DIMETHYLAMINO)METHYL]-4-ETHYL-4,9-DIHYDROXY-1H-PYRANO[3',4':6,7]INOLIZINO[1,2-B]-QUINOLINE-3,14(4H,12H)-DIONE (three-letter code: TTC) (formula: C₂₃H₂₃N₃O₅).

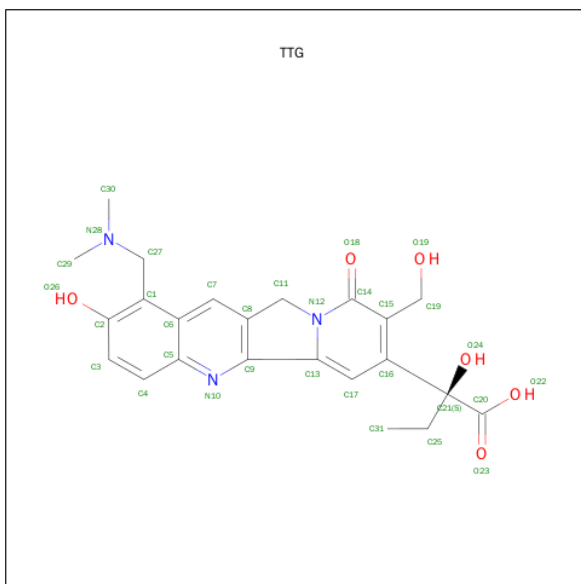


Mol	Chain	Residues	Atoms				ZeroOcc	AltConf
5	D	1	Total	C	N	O	0	1
			31	23	3	5		

- Molecule 6 is MERCURY (II) ION (three-letter code: HG) (formula: Hg).

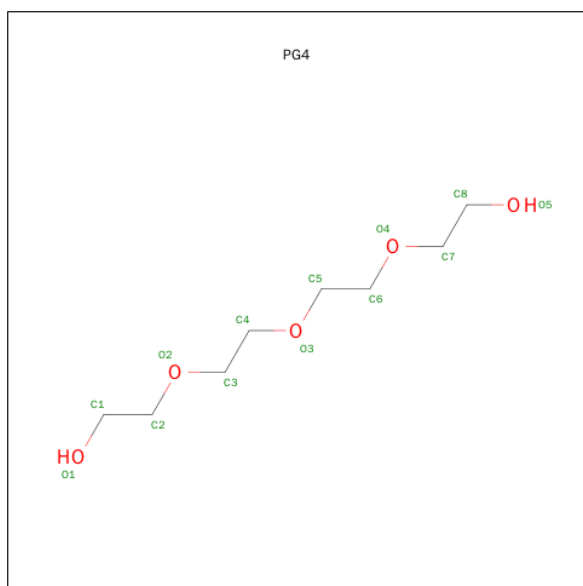
Mol	Chain	Residues	Atoms		ZeroOcc	AltConf
6	A	1	Total	Hg	0	0
			1	1		

- Molecule 7 is 2-(1-DIMETHYLAMINOMETHYL-2-HYDROXY-8-HYDROXYMETHYL-9-OXO-9,11-DIHYDRO-INDOLIZINO[1,2-B]QUINOLIN-7-YL)-2-HYDROXY-BUTYRIC ACID (three-letter code: TTG) (formula: C₂₃H₂₅N₃O₆).



Mol	Chain	Residues	Atoms				ZeroOcc	AltConf
7	C	1	Total	C	N	O	0	1
			32	23	3	6		

- Molecule 8 is TETRAETHYLENE GLYCOL (three-letter code: PG4) (formula: C₈H₁₈O₅).



Mol	Chain	Residues	Atoms			ZeroOcc	AltConf
8	A	1	Total	C	O	0	0
			13	8	5		

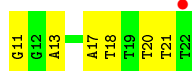
- Molecule 9 is water.

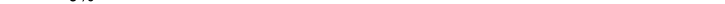
Mol	Chain	Residues	Atoms		ZeroOcc	AltConf
9	A	175	Total	O	0	0
			175	175		
9	B	18	Total	O	0	0
			18	18		
9	C	8	Total	O	0	0
			8	8		
9	D	26	Total	O	0	0
			26	26		

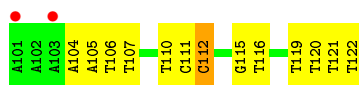
- Molecule 1: 5'-D(*AP*AP*AP*AP*AP*GP*AP*CP*TP*T)-3'

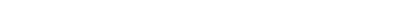


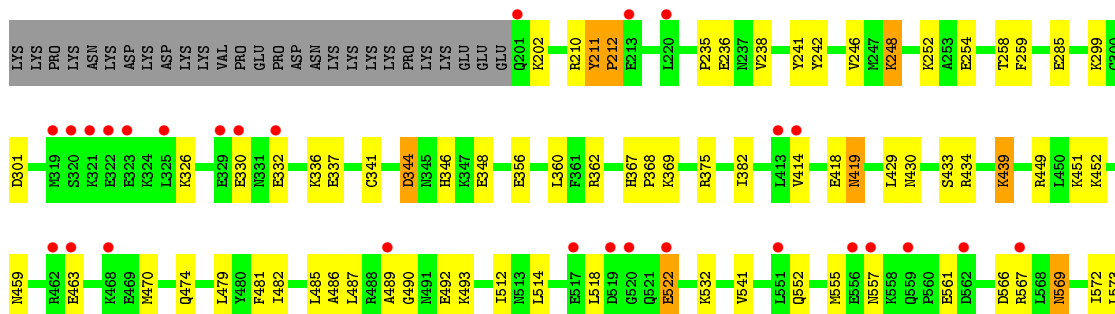
- Chain C: 

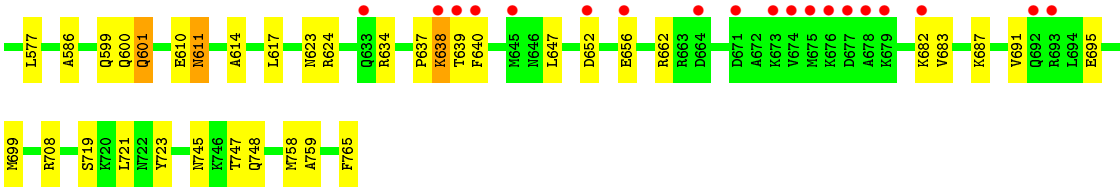


- Chain D:  9% 41% 55% 5%



- Chain A:  8% 77% 17% 5%





4 Data and refinement statistics

Property	Value	Source
Space group	P 1 21 1	Depositor
Cell constants a, b, c, α , β , γ	57.09 Å 116.26 Å 75.22 Å 90.00° 94.16° 90.00°	Depositor
Resolution (Å)	19.89 – 2.10 19.89 – 1.99	Depositor EDS
% Data completeness (in resolution range)	80.2 (19.89-2.10) 65.8 (19.89-1.99)	Depositor EDS
R_{merge}	(Not available)	Depositor
R_{sym}	0.06	Depositor
$\langle I/\sigma(I) \rangle$ ¹	2.65 (at 1.99 Å)	Xtriage
Refinement program	CNX 2000.1	Depositor
R, R_{free}	0.229 , 0.269 0.226 , (Not available)	Depositor DCC
R_{free} test set	No test flags present.	DCC
Wilson B-factor (Å ²)	29.4	Xtriage
Anisotropy	0.328	Xtriage
Bulk solvent k_{sol} (e/Å ³), B_{sol} (Å ²)	0.32 , 41.7	EDS
Estimated twinning fraction	No twinning to report.	Xtriage
L-test for twinning ²	$\langle L \rangle = 0.48$, $\langle L^2 \rangle = 0.31$	Xtriage
Outliers	1 of 45708 reflections (0.002%)	Xtriage
F_o, F_c correlation	0.93	EDS
Total number of atoms	5883	wwPDB-VP
Average B, all atoms (Å ²)	40.0	wwPDB-VP

Xtriage's analysis on translational NCS is as follows: *The largest off-origin peak in the Patterson function is 5.12% of the height of the origin peak. No significant pseudotranslation is detected.*

¹Intensities estimated from amplitudes.

²Theoretical values of $\langle |L| \rangle$, $\langle L^2 \rangle$ for acentric reflections are 0.5, 0.375 respectively for untwinned datasets, and 0.333, 0.2 for perfectly twinned datasets.

5 Model quality [i](#)

5.1 Standard geometry [i](#)

Bond lengths and bond angles in the following residue types are not validated in this section: TGP, HG, PG4, TTC, TTG, PTR

The Z score for a bond length (or angle) is the number of standard deviations the observed value is removed from the expected value. A bond length (or angle) with $|Z| > 5$ is considered an outlier worth inspection. RMSZ is the root-mean-square of all Z scores of the bond lengths (or angles).

Mol	Chain	Bond lengths		Bond angles	
		RMSZ	$\# Z > 5$	RMSZ	$\# Z > 5$
1	B	0.39	0/229	0.69	0/351
2	C	0.32	0/254	0.68	0/390
3	D	0.40	0/494	0.74	0/760
4	A	0.36	0/4770	0.57	0/6401
All	All	0.36	0/5747	0.60	0/7902

Chiral center outliers are detected by calculating the chiral volume of a chiral center and verifying if the center is modelled as a planar moiety or with the opposite hand. A planarity outlier is detected by checking planarity of atoms in a peptide group, atoms in a mainchain group or atoms of a sidechain that are expected to be planar.

Mol	Chain	#Chirality outliers	#Planarity outliers
3	D	0	1

There are no bond length outliers.

There are no bond angle outliers.

There are no chirality outliers.

All (1) planarity outliers are listed below:

Mol	Chain	Res	Type	Group
3	D	112	DC	Sidechain

5.2 Too-close contacts [i](#)

In the following table, the Non-H and H(model) columns list the number of non-hydrogen atoms and hydrogen atoms in the chain respectively. The H(added) column lists the number of hydrogen atoms added and optimized by MolProbity. The Clashes column lists the number of clashes within the asymmetric unit, whereas Symm-Clashes lists symmetry related clashes.

Mol	Chain	Non-H	H(model)	H(added)	Clashes	Symm-Clashes
1	B	203	0	112	9	0
2	C	246	0	138	12	0
3	D	443	0	255	22	0
4	A	4687	0	4720	65	0
5	D	31	0	19	0	0
6	A	1	0	0	0	0
7	C	32	0	17	4	0
8	A	13	0	18	0	0
9	A	175	0	0	4	0
9	B	18	0	0	0	0
9	C	8	0	0	3	0
9	D	26	0	0	1	0
All	All	5883	0	5279	107	0

The all-atom clashscore is defined as the number of clashes found per 1000 atoms (including hydrogen atoms). The all-atom clashscore for this structure is 10.

The worst 5 of 107 close contacts within the same asymmetric unit are listed below, sorted by their clash magnitude.

Atom-1	Atom-2	Interatomic distance (Å)	Clash overlap (Å)
1:B:1:DA:H2'	1:B:2:DA:C8	1.93	1.04
2:C:17:DA:H2''	2:C:18:DT:H5''	1.45	0.98
3:D:110:DT:H2''	3:D:111:DC:H5''	1.44	0.97
4:A:599:GLN:HE22	4:A:765:PHE:H	1.03	0.97
4:A:367:HIS:HD2	4:A:369:LYS:H	1.19	0.89

There are no symmetry-related clashes.

5.3 Torsion angles [i](#)

5.3.1 Protein backbone [i](#)

In the following table, the Percentiles column shows the percent Ramachandran outliers of the chain as a percentile score with respect to all X-ray entries followed by that with respect to entries of similar resolution.

The Analysed column shows the number of residues for which the backbone conformation was analysed, and the total number of residues.

Mol	Chain	Analysed	Favoured	Allowed	Outliers	Percentiles
4	A	562/592 (95%)	542 (96%)	12 (2%)	8 (1%)	14 7

5 of 8 Ramachandran outliers are listed below:

Mol	Chain	Res	Type
4	A	638	LYS
4	A	490	GLY
4	A	344	ASP
4	A	637	PRO
4	A	202	LYS

5.3.2 Protein sidechains ⓘ

In the following table, the Percentiles column shows the percent sidechain outliers of the chain as a percentile score with respect to all X-ray entries followed by that with respect to entries of similar resolution.

The Analysed column shows the number of residues for which the sidechain conformation was analysed, and the total number of residues.

Mol	Chain	Analysed	Rotameric	Outliers	Percentiles	
4	A	504/535 (94%)	476 (94%)	28 (6%)	26	22

5 of 28 residues with a non-rotameric sidechain are listed below:

Mol	Chain	Res	Type
4	A	439	LYS
4	A	518	LEU
4	A	699	MET
4	A	470	MET
4	A	493	LYS

Some sidechains can be flipped to improve hydrogen bonding and reduce clashes. 5 of 18 such sidechains are listed below:

Mol	Chain	Res	Type
4	A	460	GLN
4	A	474	GLN
4	A	601	GLN
4	A	430	ASN
4	A	459	ASN

5.3.3 RNA ⓘ

There are no RNA molecules in this entry.

5.4 Non-standard residues in protein, DNA, RNA chains ⓘ

2 non-standard protein/DNA/RNA residues are modelled in this entry.

In the following table, the Counts columns list the number of bonds (or angles) for which Mogul statistics could be retrieved, the number of bonds (or angles) that are observed in the model and the number of bonds (or angles) that are defined in the chemical component dictionary. The Link column lists molecule types, if any, to which the group is linked. The Z score for a bond length (or angle) is the number of standard deviations the observed value is removed from the expected value. A bond length (or angle) with $|Z| > 2$ is considered an outlier worth inspection. RMSZ is the root-mean-square of all Z scores of the bond lengths (or angles).

Mol	Type	Chain	Res	Link	Bond lengths			Bond angles		
					Counts	RMSZ	# $ Z > 2$	Counts	RMSZ	# $ Z > 2$
4	PTR	A	723	1,4	14,16,17	0.92	0	18,22,24	0.98	2 (11%)
2	TGP	C	11	3,2	17,21,25	1.09	1 (5%)	20,31,38	2.62	4 (20%)

In the following table, the Chirals column lists the number of chiral outliers, the number of chiral centers analysed, the number of these observed in the model and the number defined in the chemical component dictionary. Similar counts are reported in the Torsion and Rings columns. '-' means no outliers of that kind were identified.

Mol	Type	Chain	Res	Link	Chirals	Torsions	Rings
4	PTR	A	723	1,4	-	0/9/11/13	0/1/1/1
2	TGP	C	11	3,2	-	0/2/18/22	0/3/3/3

All (1) bond length outliers are listed below:

Mol	Chain	Res	Type	Atoms	Z	Observed(Å)	Ideal(Å)
2	C	11	TGP	C6-N1	3.61	1.39	1.33

The worst 5 of 6 bond angle outliers are listed below:

Mol	Chain	Res	Type	Atoms	Z	Observed(°)	Ideal(°)
2	C	11	TGP	C5-C6-N1	-8.68	111.72	123.59
2	C	11	TGP	N3-C2-N1	-2.43	123.75	127.44
2	C	11	TGP	C4'-C5'-S5'	-2.29	110.29	113.89
4	A	723	PTR	O-C-CA	-2.00	120.27	125.49
4	A	723	PTR	O2P-P-O1P	2.33	118.08	110.58

There are no chirality outliers.

There are no torsion outliers.

There are no ring outliers.

2 monomers are involved in 2 short contacts:

Mol	Chain	Res	Type	Clashes	Symm-Clashes
4	A	723	PTR	1	0
2	C	11	TGP	1	0

5.5 Carbohydrates [i](#)

There are no carbohydrates in this entry.

5.6 Ligand geometry [i](#)

Of 4 ligands modelled in this entry, 1 is monoatomic - leaving 3 for Mogul analysis.

In the following table, the Counts columns list the number of bonds (or angles) for which Mogul statistics could be retrieved, the number of bonds (or angles) that are observed in the model and the number of bonds (or angles) that are defined in the chemical component dictionary. The Link column lists molecule types, if any, to which the group is linked. The Z score for a bond length (or angle) is the number of standard deviations the observed value is removed from the expected value. A bond length (or angle) with $|Z| > 2$ is considered an outlier worth inspection. RMSZ is the root-mean-square of all Z scores of the bond lengths (or angles).

Mol	Type	Chain	Res	Link	Bond lengths			Bond angles		
					Counts	RMSZ	# $ Z > 2$	Counts	RMSZ	# $ Z > 2$
8	PG4	A	901	-	12,12,12	0.45	0	11,11,11	0.29	0
7	TTG	C	991[B]	-	27,35,35	2.57	5 (18%)	27,54,54	2.89	5 (18%)
5	TTC	D	990[A]	-	31,35,35	2.61	11 (35%)	26,55,55	1.90	6 (23%)

In the following table, the Chirals column lists the number of chiral outliers, the number of chiral centers analysed, the number of these observed in the model and the number defined in the chemical component dictionary. Similar counts are reported in the Torsion and Rings columns. '-' means no outliers of that kind were identified.

Mol	Type	Chain	Res	Link	Chirals	Torsions	Rings
8	PG4	A	901	-	-	0/10/10/10	0/0/0/0
7	TTG	C	991[B]	-	-	0/15/29/29	0/3/4/4
5	TTC	D	990[A]	-	-	0/7/32/32	0/3/5/5

The worst 5 of 16 bond length outliers are listed below:

Mol	Chain	Res	Type	Atoms	Z	Observed(Å)	Ideal(Å)
5	D	990[A]	TTC	O24-C21	-9.22	1.32	1.42
5	D	990[A]	TTC	C13-C9	-3.57	1.40	1.47

Continued on next page...

Continued from previous page...

Mol	Chain	Res	Type	Atoms	Z	Observed(Å)	Ideal(Å)
7	C	991[B]	TTG	C5-N10	-3.10	1.32	1.37
5	D	990[A]	TTC	C4-C5	-2.91	1.36	1.41
5	D	990[A]	TTC	C4-C3	2.14	1.41	1.36

The worst 5 of 11 bond angle outliers are listed below:

Mol	Chain	Res	Type	Atoms	Z	Observed(°)	Ideal(°)
7	C	991[B]	TTG	C9-C13-N12	-5.67	104.92	113.62
7	C	991[B]	TTG	C19-C15-C14	-4.14	114.65	121.23
5	D	990[A]	TTC	C17-C16-C15	-2.88	111.81	118.62
5	D	990[A]	TTC	C19-C15-C16	-2.76	116.82	120.45
5	D	990[A]	TTC	C4-C5-N10	-2.72	114.42	118.73

There are no chirality outliers.

There are no torsion outliers.

There are no ring outliers.

1 monomer is involved in 4 short contacts:

Mol	Chain	Res	Type	Clashes	Symm-Clashes
7	C	991[B]	TTG	4	0

5.7 Other polymers [i](#)

There are no such residues in this entry.

5.8 Polymer linkage issues [i](#)

There are no chain breaks in this entry.

6 Fit of model and data [i](#)

6.1 Protein, DNA and RNA chains [i](#)

In the following table, the column labelled ‘#RSRZ> 2’ contains the number (and percentage) of RSRZ outliers, followed by percent RSRZ outliers for the chain as percentile scores relative to all X-ray entries and entries of similar resolution. The OWAB column contains the minimum, median, 95th percentile and maximum values of the occupancy-weighted average B-factor per residue. The column labelled ‘Q< 0.9’ lists the number of (and percentage) of residues with an average occupancy less than 0.9.

Mol	Chain	Analysed	<RSRZ>	#RSRZ>2	OWAB(Å ²)	Q<0.9
1	B	10/10 (100%)	0.28	1 (10%) 9 13	17, 24, 60, 68	0
2	C	11/12 (91%)	0.58	1 (9%) 11 16	32, 46, 70, 76	0
3	D	22/22 (100%)	0.38	2 (9%) 11 16	15, 42, 61, 70	0
4	A	564/592 (95%)	0.55	47 (8%) 14 19	12, 36, 75, 103	0
All	All	607/636 (95%)	0.54	51 (8%) 14 19	12, 36, 75, 103	0

The worst 5 of 51 RSRZ outliers are listed below:

Mol	Chain	Res	Type	RSRZ
4	A	675	MET	7.3
4	A	638	LYS	6.2
4	A	639	THR	5.0
4	A	321	LYS	4.2
4	A	677	ASP	4.1

6.2 Non-standard residues in protein, DNA, RNA chains [i](#)

In the following table, the Atoms column lists the number of modelled atoms in the group and the number defined in the chemical component dictionary. LLDF column lists the quality of electron density of the group with respect to its neighbouring residues in protein, DNA or RNA chains. The B-factors column lists the minimum, median, 95th percentile and maximum values of B factors of atoms in the group. The column labelled ‘Q< 0.9’ lists the number of atoms with occupancy less than 0.9.

Mol	Type	Chain	Res	Atoms	RSCC	RSR	LLDF	B-factors(Å ²)	Q<0.9
2	TGP	C	11	19/23	0.97	0.10	-	16,24,48,58	0
4	PTR	A	723	16/17	0.98	0.14	-	21,24,28,36	0

6.3 Carbohydrates [i](#)

There are no carbohydrates in this entry.

6.4 Ligands [i](#)

In the following table, the Atoms column lists the number of modelled atoms in the group and the number defined in the chemical component dictionary. LLDF column lists the quality of electron density of the group with respect to its neighbouring residues in protein, DNA or RNA chains. The B-factors column lists the minimum, median, 95th percentile and maximum values of B factors of atoms in the group. The column labelled 'Q< 0.9' lists the number of atoms with occupancy less than 0.9.

Mol	Type	Chain	Res	Atoms	RSCC	RSR	LLDF	B-factors(\AA^2)	Q<0.9
8	PG4	A	901	13/13	0.65	0.27	4.74	48,56,63,63	0
7	TTG	C	991[B]	32/32	0.96	0.12	-0.59	13,23,33,37	32
5	TTC	D	990[A]	31/31	0.96	0.11	-0.85	13,22,33,37	31
6	HG	A	900	1/1	0.89	0.07	-1.62	75,75,75,75	1

6.5 Other polymers [i](#)

There are no such residues in this entry.