



wwPDB X-ray Structure Validation Summary Report ⓘ

Feb 1, 2016 – 09:54 AM GMT

PDB ID : 3K4L
Title : Pyranose 2-oxidase F454N mutant in complex with 2FG
Authors : Divne, C.; Tan, T.C.
Deposited on : 2009-10-05
Resolution : 1.75 Å(reported)

This is a wwPDB X-ray Structure Validation Summary Report for a publicly released PDB entry.
We welcome your comments at validation@mail.wwpdb.org
A user guide is available at
<http://wwpdb.org/validation/2016/XrayValidationReportHelp>
with specific help available everywhere you see the ⓘ symbol.

The following versions of software and data (see [references ⓘ](#)) were used in the production of this report:

MolProbity : 4.02b-467
Mogul : 1.7 (RC4), CSD as536be (2015)
Xtriage (Phenix) : 1.9-1692
EDS : rb-20026688
Percentile statistics : 20151230.v01 (using entries in the PDB archive December 30th 2015)
Refmac : 5.8.0135
CCP4 : 6.5.0
Ideal geometry (proteins) : Engh & Huber (2001)
Ideal geometry (DNA, RNA) : Parkinson et al. (1996)
Validation Pipeline (wwPDB-VP) : trunk26865

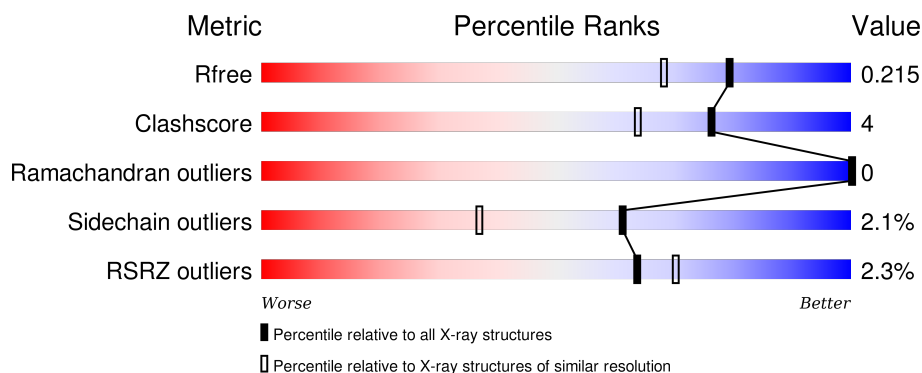
1 Overall quality at a glance

The following experimental techniques were used to determine the structure:

X-RAY DIFFRACTION

The reported resolution of this entry is 1.75 Å.

Percentile scores (ranging between 0-100) for global validation metrics of the entry are shown in the following graphic. The table shows the number of entries on which the scores are based.



Metric	Whole archive (#Entries)	Similar resolution (#Entries, resolution range(Å))
R_{free}	91344	1609 (1.76-1.76)
Clashscore	102246	1730 (1.76-1.76)
Ramachandran outliers	100387	1711 (1.76-1.76)
Sidechain outliers	100360	1711 (1.76-1.76)
RSRZ outliers	91569	1610 (1.76-1.76)

The table below summarises the geometric issues observed across the polymeric chains and their fit to the electron density. The red, orange, yellow and green segments on the lower bar indicate the fraction of residues that contain outliers for ≥ 3 , 2, 1 and 0 types of geometric quality criteria. A grey segment represents the fraction of residues that are not modelled. The numeric value for each fraction is indicated below the corresponding segment, with a dot representing fractions $\leq 5\%$. The upper red bar (where present) indicates the fraction of residues that have poor fit to the electron density. The numeric value is given above the bar.

Mol	Chain	Length	Quality of chain
1	A	623	
1	B	623	

The following table lists non-polymeric compounds, carbohydrate monomers and non-standard residues in protein, DNA, RNA chains that are outliers for geometric or electron-density-fit criteria:

Mol	Type	Chain	Res	Chirality	Geometry	Clashes	Electron density
4	MES	A	902	-	-	-	X
4	MES	B	902	-	-	-	X

2 Entry composition [i](#)

There are 5 unique types of molecules in this entry. The entry contains 9832 atoms, of which 0 are hydrogens and 0 are deuteriums.

In the tables below, the ZeroOcc column contains the number of atoms modelled with zero occupancy, the AltConf column contains the number of residues with at least one atom in alternate conformation and the Trace column contains the number of residues modelled with at most 2 atoms.

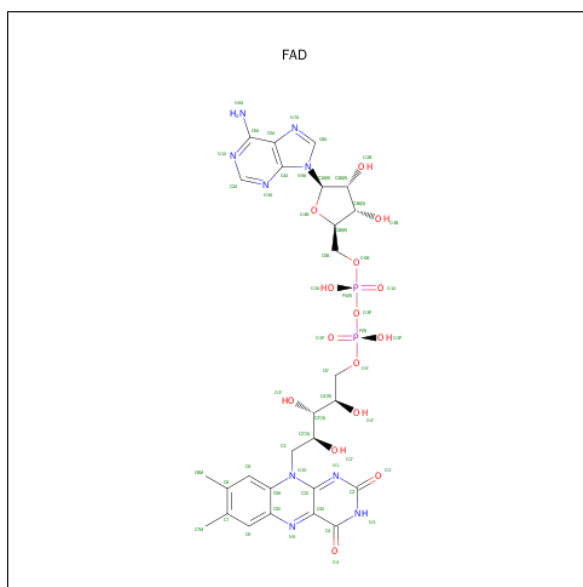
- Molecule 1 is a protein called Pyranose 2-oxidase.

Mol	Chain	Residues	Atoms					ZeroOcc	AltConf	Trace
1	A	567	Total	C	N	O	S	0	0	0
			4472	2821	768	859	24			
1	B	567	Total	C	N	O	S	0	0	0
			4472	2821	768	859	24			

There are 2 discrepancies between the modelled and reference sequences:

Chain	Residue	Modelled	Actual	Comment	Reference
A	454	ASN	PHE	ENGINEERED	UNP Q7ZA32
B	454	ASN	PHE	ENGINEERED	UNP Q7ZA32

- Molecule 2 is FLAVIN-ADENINE DINUCLEOTIDE (three-letter code: FAD) (formula: $C_{27}H_{33}N_9O_{15}P_2$).



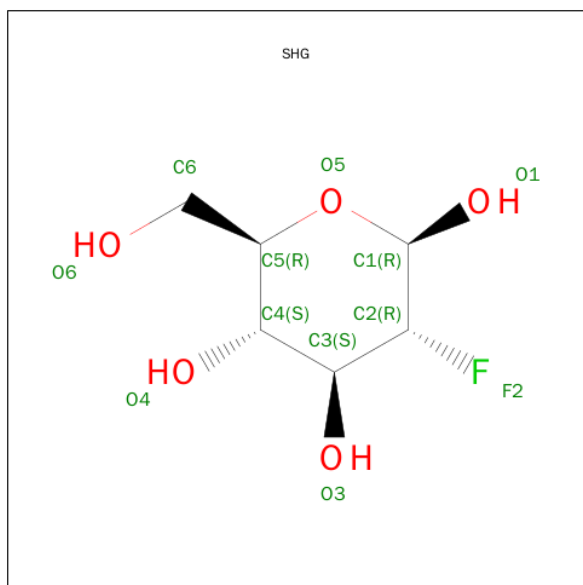
Mol	Chain	Residues	Atoms					ZeroOcc	AltConf
2	A	1	Total	C	N	O	P	0	0
			53	27	9	15	2		

Continued on next page...

Continued from previous page...

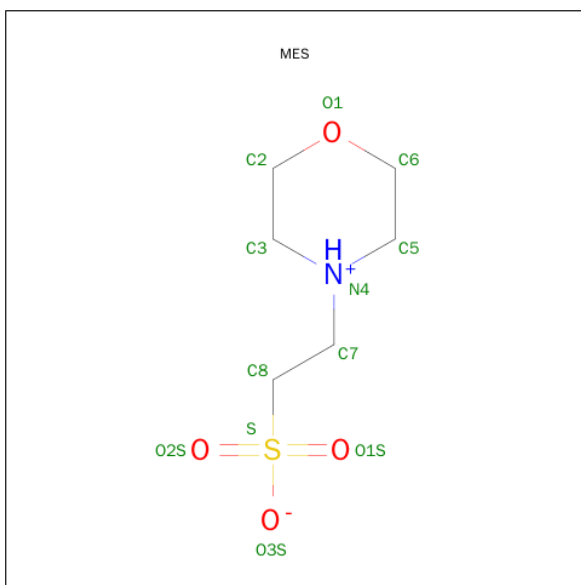
Mol	Chain	Residues	Atoms					ZeroOcc	AltConf
2	B	1	Total	C	N	O	P	0	0
			53	27	9	15	2		

- Molecule 3 is SUGAR (2-DEOXY-2-FLUORO-BETA-D-GLUCOPYRANOSE) (three-letter code: SHG) (formula: $C_6H_{11}FO_5$).



Mol	Chain	Residues	Atoms				ZeroOcc	AltConf
3	A	1	Total	C	F	O	0	0
			12	6	1	5		
3	B	1	Total	C	F	O	0	0
			12	6	1	5		

- Molecule 4 is 2-(N-MORPHOLINO)-ETHANESULFONIC ACID (three-letter code: MES) (formula: $C_6H_{13}NO_4S$).



Mol	Chain	Residues	Atoms					ZeroOcc	AltConf
4	A	1	Total	C	N	O	S	0	0
			12	6	1	4	1		
4	B	1	Total	C	N	O	S	0	0
			12	6	1	4	1		
4	B	1	Total	C	N	O	S	0	0
			12	6	1	4	1		

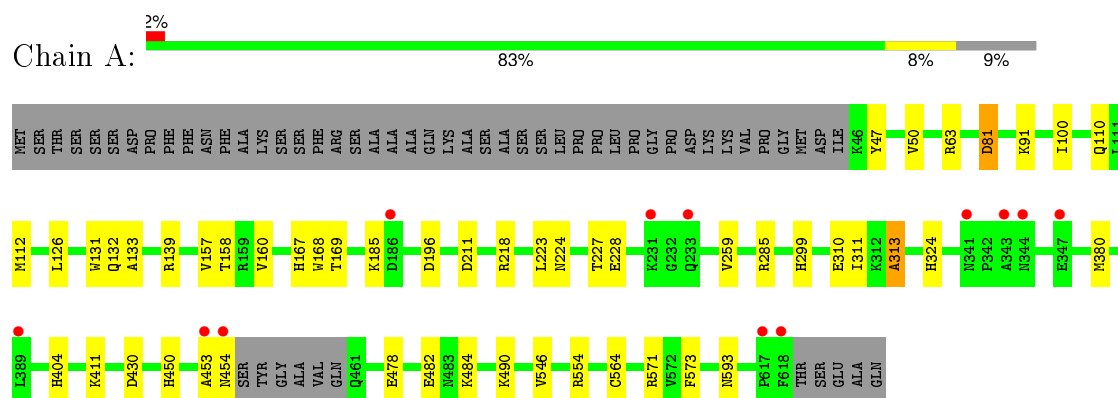
- Molecule 5 is water.

Mol	Chain	Residues	Atoms		ZeroOcc	AltConf
5	A	372	Total	O	0	0
			372	372		
5	B	350	Total	O	0	0
			350	350		

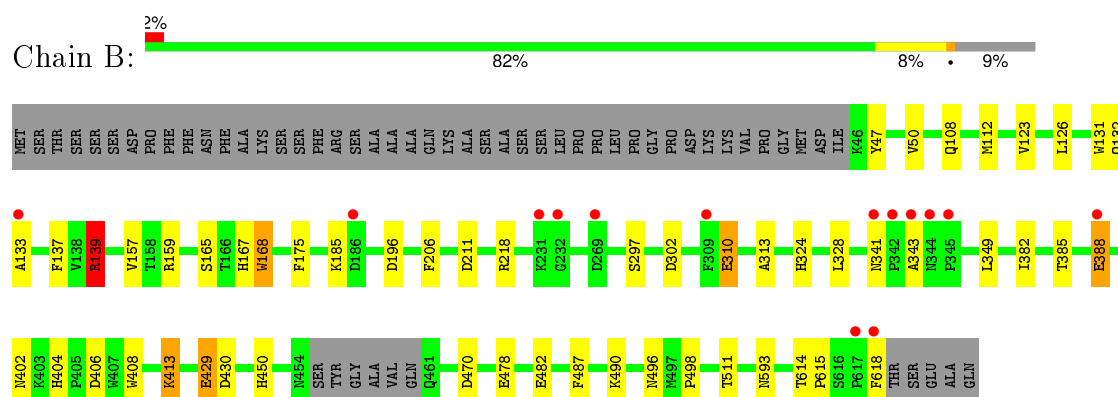
3 Residue-property plots [i](#)

These plots are drawn for all protein, RNA and DNA chains in the entry. The first graphic for a chain summarises the proportions of errors displayed in the second graphic. The second graphic shows the sequence view annotated by issues in geometry and electron density. Residues are color-coded according to the number of geometric quality criteria for which they contain at least one outlier: green = 0, yellow = 1, orange = 2 and red = 3 or more. A red dot above a residue indicates a poor fit to the electron density ($RSRZ > 2$). Stretches of 2 or more consecutive residues without any outlier are shown as a green connector. Residues present in the sample, but not in the model, are shown in grey.

• Molecule 1: Pyranose 2-oxidase



• Molecule 1: Pyranose 2-oxidase



4 Data and refinement statistics

Property	Value	Source
Space group	P 43 21 2	Depositor
Cell constants a, b, c, α , β , γ	101.57Å 101.57Å 250.05Å 90.00° 90.00° 90.00°	Depositor
Resolution (Å)	30.00 – 1.75 28.66 – 1.75	Depositor EDS
% Data completeness (in resolution range)	99.9 (30.00-1.75) 99.9 (28.66-1.75)	Depositor EDS
R_{merge}	(Not available)	Depositor
R_{sym}	0.10	Depositor
$\langle I/\sigma(I) \rangle$ ¹	2.56 (at 1.75Å)	Xtriage
Refinement program	REFMAC 5.2.0019	Depositor
R, R_{free}	0.175 , 0.209 0.182 , 0.215	Depositor DCC
R_{free} test set	1974 reflections (1.52%)	DCC
Wilson B-factor (Å ²)	15.8	Xtriage
Anisotropy	0.051	Xtriage
Bulk solvent k_{sol} (e/Å ³), B_{sol} (Å ²)	0.38 , 52.8	EDS
Estimated twinning fraction	No twinning to report.	Xtriage
L-test for twinning ²	$\langle L \rangle = 0.46$, $\langle L^2 \rangle = 0.29$	Xtriage
Outliers	0 of 132005 reflections	Xtriage
F_o, F_c correlation	0.95	EDS
Total number of atoms	9832	wwPDB-VP
Average B, all atoms (Å ²)	16.0	wwPDB-VP

Xtriage's analysis on translational NCS is as follows: *The analyses of the Patterson function reveals a significant off-origin peak that is 20.98 % of the origin peak, indicating pseudo translational symmetry. The chance of finding a peak of this or larger height randomly in a structure without pseudo translational symmetry is equal to 7.7233e-03.*

¹Intensities estimated from amplitudes.

²Theoretical values of $\langle |L| \rangle$, $\langle L^2 \rangle$ for acentric reflections are 0.5, 0.375 respectively for untwinned datasets, and 0.333, 0.2 for perfectly twinned datasets.

5 Model quality [i](#)

5.1 Standard geometry [i](#)

Bond lengths and bond angles in the following residue types are not validated in this section: MES, FAD, SHG

The Z score for a bond length (or angle) is the number of standard deviations the observed value is removed from the expected value. A bond length (or angle) with $|Z| > 5$ is considered an outlier worth inspection. RMSZ is the root-mean-square of all Z scores of the bond lengths (or angles).

Mol	Chain	Bond lengths		Bond angles	
		RMSZ	# $ Z > 5$	RMSZ	# $ Z > 5$
1	A	1.02	6/4585 (0.1%)	0.95	9/6233 (0.1%)
1	B	0.99	5/4585 (0.1%)	0.96	13/6233 (0.2%)
All	All	1.01	11/9170 (0.1%)	0.95	22/12466 (0.2%)

The worst 5 of 11 bond length outliers are listed below:

Mol	Chain	Res	Type	Atoms	Z	Observed(Å)	Ideal(Å)
1	A	478	GLU	CD-OE1	8.21	1.34	1.25
1	B	211	ASP	CG-OD1	6.95	1.41	1.25
1	A	411	LYS	CD-CE	6.54	1.67	1.51
1	B	388	GLU	CG-CD	5.94	1.60	1.51
1	B	108	GLN	CG-CD	5.74	1.64	1.51

The worst 5 of 22 bond angle outliers are listed below:

Mol	Chain	Res	Type	Atoms	Z	Observed(°)	Ideal(°)
1	A	211	ASP	CB-CG-OD1	11.46	128.62	118.30
1	B	139	ARG	NE-CZ-NH1	11.00	125.80	120.30
1	B	211	ASP	CB-CG-OD1	10.98	128.18	118.30
1	A	139	ARG	NE-CZ-NH1	10.53	125.56	120.30
1	B	211	ASP	CB-CG-OD2	-10.24	109.09	118.30

There are no chirality outliers.

There are no planarity outliers.

5.2 Too-close contacts [i](#)

In the following table, the Non-H and H(model) columns list the number of non-hydrogen atoms and hydrogen atoms in the chain respectively. The H(added) column lists the number of hydrogen

atoms added and optimized by MolProbity. The Clashes column lists the number of clashes within the asymmetric unit, whereas Symm-Clashes lists symmetry related clashes.

Mol	Chain	Non-H	H(model)	H(added)	Clashes	Symm-Clashes
1	A	4472	0	4321	28	0
1	B	4472	0	4321	34	0
2	A	53	0	30	5	0
2	B	53	0	30	10	0
3	A	12	0	11	2	0
3	B	12	0	11	1	0
4	A	12	0	12	1	0
4	B	24	0	24	3	0
5	A	372	0	0	2	0
5	B	350	0	0	4	0
All	All	9832	0	8760	66	0

The all-atom clashscore is defined as the number of clashes found per 1000 atoms (including hydrogen atoms). The all-atom clashscore for this structure is 4.

The worst 5 of 66 close contacts within the same asymmetric unit are listed below, sorted by their clash magnitude.

Atom-1	Atom-2	Interatomic distance (Å)	Clash overlap (Å)
1:B:167:HIS:HE2	2:B:801:FAD:C8M	0.90	1.53
1:B:167:HIS:NE2	2:B:801:FAD:HM82	0.91	1.22
1:B:167:HIS:CD2	2:B:801:FAD:HM82	1.89	1.06
1:B:167:HIS:HE2	2:B:801:FAD:HM81	1.27	1.00
1:B:167:HIS:CE1	2:B:801:FAD:HM82	2.04	0.91

There are no symmetry-related clashes.

5.3 Torsion angles ⓘ

5.3.1 Protein backbone ⓘ

In the following table, the Percentiles column shows the percent Ramachandran outliers of the chain as a percentile score with respect to all X-ray entries followed by that with respect to entries of similar resolution.

The Analysed column shows the number of residues for which the backbone conformation was analysed, and the total number of residues.

Mol	Chain	Analysed	Favoured	Allowed	Outliers	Percentiles
1	A	563/623 (90%)	549 (98%)	14 (2%)	0	100 100

Continued on next page...

Continued from previous page...

Mol	Chain	Analysed	Favoured	Allowed	Outliers	Percentiles	
1	B	563/623 (90%)	546 (97%)	17 (3%)	0	100	100
All	All	1126/1246 (90%)	1095 (97%)	31 (3%)	0	100	100

There are no Ramachandran outliers to report.

5.3.2 Protein sidechains ⓘ

In the following table, the Percentiles column shows the percent sidechain outliers of the chain as a percentile score with respect to all X-ray entries followed by that with respect to entries of similar resolution.

The Analysed column shows the number of residues for which the sidechain conformation was analysed, and the total number of residues.

Mol	Chain	Analysed	Rotameric	Outliers	Percentiles	
1	A	497/542 (92%)	491 (99%)	6 (1%)	78	62
1	B	497/542 (92%)	482 (97%)	15 (3%)	48	22
All	All	994/1084 (92%)	973 (98%)	21 (2%)	61	37

5 of 21 residues with a non-rotameric sidechain are listed below:

Mol	Chain	Res	Type
1	B	206	PHE
1	B	328	LEU
1	B	490	LYS
1	B	168	TRP
1	B	496	ASN

Some sidechains can be flipped to improve hydrogen bonding and reduce clashes. 5 of 7 such sidechains are listed below:

Mol	Chain	Res	Type
1	A	404	HIS
1	B	404	HIS
1	A	563	ASN
1	A	324	HIS
1	B	233	GLN

5.3.3 RNA ⓘ

There are no RNA molecules in this entry.

5.4 Non-standard residues in protein, DNA, RNA chains ⓘ

There are no non-standard protein/DNA/RNA residues in this entry.

5.5 Carbohydrates ⓘ

There are no carbohydrates in this entry.

5.6 Ligand geometry ⓘ

7 ligands are modelled in this entry.

In the following table, the Counts columns list the number of bonds (or angles) for which Mogul statistics could be retrieved, the number of bonds (or angles) that are observed in the model and the number of bonds (or angles) that are defined in the chemical component dictionary. The Link column lists molecule types, if any, to which the group is linked. The Z score for a bond length (or angle) is the number of standard deviations the observed value is removed from the expected value. A bond length (or angle) with $|Z| > 2$ is considered an outlier worth inspection. RMSZ is the root-mean-square of all Z scores of the bond lengths (or angles).

Mol	Type	Chain	Res	Link	Bond lengths			Bond angles		
					Counts	RMSZ	# $ Z > 2$	Counts	RMSZ	# $ Z > 2$
2	FAD	A	801	1	48,58,58	1.42	8 (16%)	54,89,89	3.18	16 (29%)
3	SHG	A	901	-	11,12,12	0.70	0	15,17,17	3.51	6 (40%)
4	MES	A	902	-	11,12,12	0.88	0	14,16,16	4.84	6 (42%)
2	FAD	B	801	1	48,58,58	1.47	9 (18%)	54,89,89	3.24	14 (25%)
3	SHG	B	901	-	11,12,12	0.70	0	15,17,17	4.11	7 (46%)
4	MES	B	902	-	11,12,12	0.68	0	14,16,16	3.91	5 (35%)
4	MES	B	903	-	11,12,12	0.69	0	14,16,16	7.13	7 (50%)

In the following table, the Chirals column lists the number of chiral outliers, the number of chiral centers analysed, the number of these observed in the model and the number defined in the chemical component dictionary. Similar counts are reported in the Torsion and Rings columns. '-' means no outliers of that kind were identified.

Mol	Type	Chain	Res	Link	Chirals	Torsions	Rings
2	FAD	A	801	1	-	0/30/50/50	0/6/6/6
3	SHG	A	901	-	-	0/2/22/22	0/1/1/1

Continued on next page...

Continued from previous page...

Mol	Type	Chain	Res	Link	Chirals	Torsions	Rings
4	MES	A	902	-	-	0/6/14/14	0/1/1/1
2	FAD	B	801	1	-	0/30/50/50	0/6/6/6
3	SHG	B	901	-	-	0/2/22/22	0/1/1/1
4	MES	B	902	-	-	0/6/14/14	0/1/1/1
4	MES	B	903	-	-	0/6/14/14	0/1/1/1

The worst 5 of 17 bond length outliers are listed below:

Mol	Chain	Res	Type	Atoms	Z	Observed(Å)	Ideal(Å)
2	B	801	FAD	C10-N10	-3.77	1.34	1.39
2	A	801	FAD	C4A-N3A	-2.79	1.31	1.35
2	B	801	FAD	O4B-C4B	-2.71	1.38	1.45
2	B	801	FAD	O2B-C2B	-2.24	1.37	1.43
2	A	801	FAD	C2B-C3B	-2.15	1.47	1.53

The worst 5 of 61 bond angle outliers are listed below:

Mol	Chain	Res	Type	Atoms	Z	Observed(°)	Ideal(°)
4	B	903	MES	O1S-S-C8	-20.10	89.75	106.91
4	B	903	MES	O2S-S-C8	-14.35	94.66	106.91
4	A	902	MES	O1S-S-C8	-14.33	94.68	106.91
2	B	801	FAD	N3A-C2A-N1A	-13.46	118.59	128.89
2	A	801	FAD	N3A-C2A-N1A	-13.13	118.84	128.89

There are no chirality outliers.

There are no torsion outliers.

There are no ring outliers.

7 monomers are involved in 20 short contacts:

Mol	Chain	Res	Type	Clashes	Symm-Clashes
2	A	801	FAD	5	0
3	A	901	SHG	2	0
4	A	902	MES	1	0
2	B	801	FAD	10	0
3	B	901	SHG	1	0
4	B	902	MES	2	0
4	B	903	MES	1	0

5.7 Other polymers [i](#)

There are no such residues in this entry.

5.8 Polymer linkage issues [i](#)

There are no chain breaks in this entry.

6 Fit of model and data [i](#)

6.1 Protein, DNA and RNA chains [i](#)

In the following table, the column labelled ‘#RSRZ> 2’ contains the number (and percentage) of RSRZ outliers, followed by percent RSRZ outliers for the chain as percentile scores relative to all X-ray entries and entries of similar resolution. The OWAB column contains the minimum, median, 95th percentile and maximum values of the occupancy-weighted average B-factor per residue. The column labelled ‘Q< 0.9’ lists the number of (and percentage) of residues with an average occupancy less than 0.9.

Mol	Chain	Analysed	<RSRZ>	#RSRZ>2	OWAB(Å ²)	Q<0.9
1	A	567/623 (91%)	-0.24	12 (2%) 67 73	8, 13, 26, 42	0
1	B	567/623 (91%)	-0.04	14 (2%) 61 67	8, 15, 29, 48	0
All	All	1134/1246 (91%)	-0.14	26 (2%) 64 70	8, 14, 28, 48	0

The worst 5 of 26 RSRZ outliers are listed below:

Mol	Chain	Res	Type	RSRZ
1	B	343	ALA	8.2
1	B	618	PHE	5.8
1	A	618	PHE	5.7
1	B	232	GLY	5.0
1	B	617	PRO	4.5

6.2 Non-standard residues in protein, DNA, RNA chains [i](#)

There are no non-standard protein/DNA/RNA residues in this entry.

6.3 Carbohydrates [i](#)

There are no carbohydrates in this entry.

6.4 Ligands [i](#)

In the following table, the Atoms column lists the number of modelled atoms in the group and the number defined in the chemical component dictionary. LLDF column lists the quality of electron density of the group with respect to its neighbouring residues in protein, DNA or RNA chains. The B-factors column lists the minimum, median, 95th percentile and maximum values of B factors of atoms in the group. The column labelled ‘Q< 0.9’ lists the number of atoms with occupancy less than 0.9.

Mol	Type	Chain	Res	Atoms	RSCC	RSR	LLDF	B-factors(\AA^2)	Q<0.9
4	MES	B	902	12/12	0.92	0.23	3.89	24,30,33,35	0
4	MES	A	902	12/12	0.93	0.17	2.44	23,30,32,33	0
4	MES	B	903	12/12	0.98	0.10	0.62	26,32,37,38	0
3	SHG	A	901	12/12	0.91	0.10	0.14	29,31,33,34	0
3	SHG	B	901	12/12	0.91	0.11	0.14	27,32,37,38	0
2	FAD	A	801	53/53	0.98	0.06	-1.02	8,12,16,16	0
2	FAD	B	801	53/53	0.98	0.07	-1.13	9,14,17,21	0

6.5 Other polymers [i](#)

There are no such residues in this entry.