



Full wwPDB X-ray Structure Validation Report ⓘ

Jan 31, 2016 – 08:24 PM GMT

PDB ID : 1K5Q
Title : PENICILLIN ACYLASE, MUTANT COMPLEXED WITH PAA
Authors : Hensgens, C.M.H.; Keizer, E.; Snijder, H.J.; Dijkstra, B.W.
Deposited on : 2001-10-12
Resolution : 2.34 Å(reported)

This is a Full wwPDB X-ray Structure Validation Report for a publicly released PDB entry.
We welcome your comments at validation@mail.wwpdb.org
A user guide is available at
<http://wwpdb.org/validation/2016/XrayValidationReportHelp>
with specific help available everywhere you see the ⓘ symbol.

The following versions of software and data (see [references ⓘ](#)) were used in the production of this report:

MolProbity : 4.02b-467
Mogul : 1.7 (RC4), CSD as536be (2015)
Xtriage (Phenix) : **NOT EXECUTED**
EDS : **NOT EXECUTED**
Percentile statistics : 20151230.v01 (using entries in the PDB archive December 30th 2015)
Ideal geometry (proteins) : Engh & Huber (2001)
Ideal geometry (DNA, RNA) : Parkinson et al. (1996)
Validation Pipeline (wwPDB-VP) : trunk26865

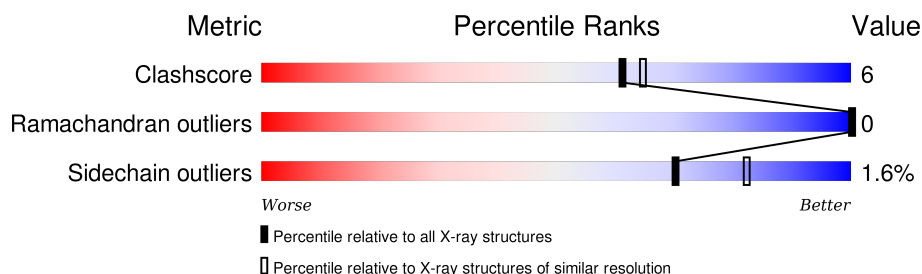
1 Overall quality at a glance

The following experimental techniques were used to determine the structure:

X-RAY DIFFRACTION

The reported resolution of this entry is 2.34 Å.

Percentile scores (ranging between 0-100) for global validation metrics of the entry are shown in the following graphic. The table shows the number of entries on which the scores are based.



Metric	Whole archive (#Entries)	Similar resolution (#Entries, resolution range(Å))
Clashscore	102246	1509 (2.36-2.32)
Ramachandran outliers	100387	1490 (2.36-2.32)
Sidechain outliers	100360	1491 (2.36-2.32)

The table below summarises the geometric issues observed across the polymeric chains and their fit to the electron density. The red, orange, yellow and green segments on the lower bar indicate the fraction of residues that contain outliers for ≥ 3 , 2, 1 and 0 types of geometric quality criteria. A grey segment represents the fraction of residues that are not modelled. The numeric value for each fraction is indicated below the corresponding segment, with a dot representing fractions $\leq 5\%$. The upper red bar (where present) indicates the fraction of residues that have poor fit to the electron density. The numeric value is given above the bar.

Note EDS was not executed.

Mol	Chain	Length	Quality of chain
1	A	209	
2	B	557	

2 Entry composition

There are 5 unique types of molecules in this entry. The entry contains 6436 atoms, of which 0 are hydrogens and 0 are deuteriums.

In the tables below, the ZeroOcc column contains the number of atoms modelled with zero occupancy, the AltConf column contains the number of residues with at least one atom in alternate conformation and the Trace column contains the number of residues modelled with at most 2 atoms.

- Molecule 1 is a protein called PENICILLIN G ACYLASE ALPHA SUBUNIT.

Mol	Chain	Residues	Atoms					ZeroOcc	AltConf	Trace
1	A	206	Total	C	N	O	S	0	0	0
			1657	1058	278	313	8			

- Molecule 2 is a protein called PENICILLIN G ACYLASE BETA SUBUNIT.

Mol	Chain	Residues	Atoms					ZeroOcc	AltConf	Trace
2	B	557	Total	C	N	O	S	0	0	0
			4410	2800	766	834	10			

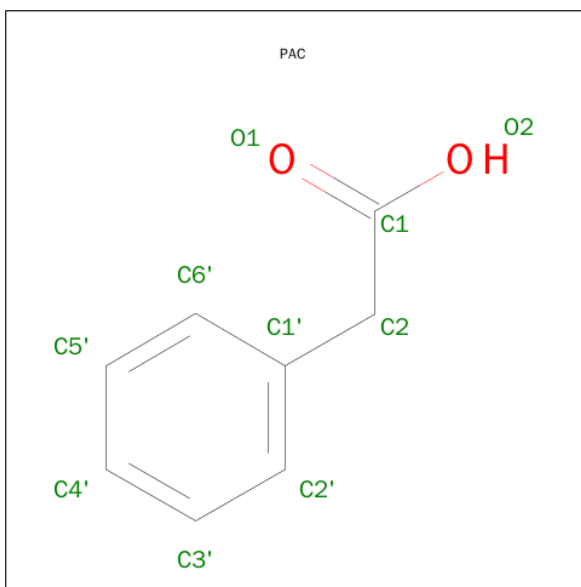
There are 2 discrepancies between the modelled and reference sequences:

Chain	Residue	Modelled	Actual	Comment	Reference
B	24	ALA	PHE	ENGINEERED	UNP P06875
B	148	LEU	VAL	ENGINEERED	UNP P06875

- Molecule 3 is CALCIUM ION (three-letter code: CA) (formula: Ca).

Mol	Chain	Residues	Atoms		ZeroOcc	AltConf
3	B	1	Total	Ca	0	0
			1	1		

- Molecule 4 is 2-PHENYLACETIC ACID (three-letter code: PAC) (formula: C₈H₈O₂).



Mol	Chain	Residues	Atoms			ZeroOcc	AltConf
4	B	1	Total	C	O	0	0
			10	8	2		

- Molecule 5 is water.

Mol	Chain	Residues	Atoms		ZeroOcc	AltConf
5	A	101	Total	O	0	0
			101	101		
5	B	257	Total	O	0	0
			257	257		

4 Data and refinement statistics

Xtriage (Phenix) and EDS were not executed - this section will therefore be incomplete.

Property	Value	Source
Space group	P 1	Depositor
Cell constants a, b, c, α , β , γ	50.76 Å 63.96 Å 64.24 Å 72.86° 73.91° 73.50°	Depositor
Resolution (Å)	19.03 – 2.34	Depositor
% Data completeness (in resolution range)	92.9 (19.03-2.34)	Depositor
R_{merge}	(Not available)	Depositor
R_{sym}	0.04	Depositor
Refinement program	REFMAC 5	Depositor
R, R_{free}	0.163 , 0.218	Depositor
Estimated twinning fraction	No twinning to report.	Xtriage
Total number of atoms	6436	wwPDB-VP
Average B, all atoms (Å ²)	17.0	wwPDB-VP

5 Model quality ⓘ

5.1 Standard geometry ⓘ

Bond lengths and bond angles in the following residue types are not validated in this section: CA, PAC

The Z score for a bond length (or angle) is the number of standard deviations the observed value is removed from the expected value. A bond length (or angle) with $|Z| > 5$ is considered an outlier worth inspection. RMSZ is the root-mean-square of all Z scores of the bond lengths (or angles).

Mol	Chain	Bond lengths		Bond angles	
		RMSZ	$\# Z > 5$	RMSZ	$\# Z > 5$
1	A	0.48	0/1699	0.71	3/2305 (0.1%)
2	B	0.50	1/4535 (0.0%)	0.74	5/6184 (0.1%)
All	All	0.49	1/6234 (0.0%)	0.73	8/8489 (0.1%)

All (1) bond length outliers are listed below:

Mol	Chain	Res	Type	Atoms	Z	Observed(Å)	Ideal(Å)
2	B	165	GLU	CD-OE2	6.88	1.33	1.25

All (8) bond angle outliers are listed below:

Mol	Chain	Res	Type	Atoms	Z	Observed(°)	Ideal(°)
1	A	68	ASP	CB-CG-OD2	6.32	123.98	118.30
1	A	148	ASP	CB-CG-OD2	6.18	123.86	118.30
2	B	13	ASP	CB-CG-OD2	6.16	123.84	118.30
2	B	542	ASP	CB-CG-OD2	6.00	123.70	118.30
2	B	403	ASP	CB-CG-OD2	5.80	123.52	118.30
2	B	523	ASP	CB-CG-OD2	5.54	123.28	118.30
2	B	381	ASP	CB-CG-OD2	5.24	123.01	118.30
1	A	105	ASP	CB-CG-OD2	5.11	122.90	118.30

There are no chirality outliers.

There are no planarity outliers.

5.2 Too-close contacts ⓘ

In the following table, the Non-H and H(model) columns list the number of non-hydrogen atoms and hydrogen atoms in the chain respectively. The H(added) column lists the number of hydrogen atoms added and optimized by MolProbity. The Clashes column lists the number of clashes within

the asymmetric unit, whereas Symm-Clashes lists symmetry related clashes.

Mol	Chain	Non-H	H(model)	H(added)	Clashes	Symm-Clashes
1	A	1657	0	1604	21	0
2	B	4410	0	4240	56	0
3	B	1	0	0	0	0
4	B	10	0	7	0	0
5	A	101	0	0	1	0
5	B	257	0	0	3	0
All	All	6436	0	5851	66	0

The all-atom clashscore is defined as the number of clashes found per 1000 atoms (including hydrogen atoms). The all-atom clashscore for this structure is 6.

All (66) close contacts within the same asymmetric unit are listed below, sorted by their clash magnitude.

Atom-1	Atom-2	Interatomic distance (Å)	Clash overlap (Å)
2:B:287:ARG:NH1	2:B:288:GLN:OE1	2.25	0.69
1:A:181:LEU:HD21	1:A:201:PHE:HB2	1.72	0.69
1:A:81:GLN:HB3	2:B:148:LEU:HD22	1.76	0.68
1:A:82:ILE:HG13	2:B:148:LEU:HD21	1.77	0.65
1:A:181:LEU:CD2	1:A:201:PHE:HB2	2.31	0.60
1:A:82:ILE:CG1	2:B:148:LEU:HD21	2.32	0.59
1:A:4:SER:HA	1:A:22:ASN:HD22	1.66	0.59
1:A:194:GLU:OE2	2:B:233:GLN:HG3	2.04	0.57
2:B:1:SER:HB3	2:B:23:GLN:H	1.69	0.57
2:B:1:SER:HB3	2:B:22:PRO:HA	1.89	0.55
2:B:67:SER:HA	2:B:178:ASN:O	2.06	0.55
2:B:250:ALA:HB2	2:B:258:TRP:CE3	2.41	0.55
2:B:318:GLN:HG3	5:B:737:HOH:O	2.07	0.55
2:B:82:LEU:HD11	2:B:136:ALA:HB2	1.89	0.53
2:B:526:LYS:HA	2:B:526:LYS:HE2	1.91	0.53
2:B:42:TYR:CZ	2:B:159:LYS:HE3	2.44	0.52
2:B:401:GLN:HA	2:B:401:GLN:NE2	2.23	0.52
2:B:1:SER:CB	2:B:22:PRO:HA	2.40	0.51
2:B:315:PRO:HA	2:B:318:GLN:CG	2.40	0.51
1:A:159:LEU:HD11	1:A:163:LYS:HE3	1.92	0.50
2:B:74:ASP:OD1	2:B:75:VAL:HG23	2.11	0.50
2:B:314:ASP:O	2:B:317:ARG:HB3	2.12	0.49
2:B:517:VAL:HG13	2:B:521:TYR:CB	2.43	0.48
1:A:101:ASN:ND2	1:A:128:ARG:HG3	2.28	0.48
2:B:22:PRO:HG3	2:B:57:PHE:CZ	2.48	0.48
2:B:44:VAL:HG11	2:B:158:MET:HB3	1.96	0.48

Continued on next page...

Continued from previous page...

Atom-1	Atom-2	Interatomic distance (Å)	Clash overlap (Å)
2:B:359:VAL:HG22	2:B:413:LEU:HD13	1.95	0.47
2:B:83:SER:HB2	2:B:96:TRP:CH2	2.49	0.47
2:B:132:THR:HG22	2:B:133:THR:H	1.80	0.47
1:A:85:LEU:HD22	2:B:152:LEU:HD11	1.97	0.46
2:B:486:ILE:N	2:B:486:ILE:HD12	2.31	0.45
2:B:16:ALA:HB2	2:B:186:GLY:HA2	1.99	0.45
2:B:472:HIS:HB3	5:B:626:HOH:O	2.16	0.45
1:A:29:TYR:HA	1:A:95:GLY:O	2.17	0.44
2:B:300:LEU:HB3	2:B:301:PRO:HD3	1.99	0.44
1:A:207:GLN:HA	2:B:215:TRP:CZ2	2.53	0.44
1:A:135:ALA:O	1:A:139:VAL:HG23	2.18	0.44
2:B:18:MET:O	2:B:485:MET:HA	2.17	0.44
2:B:520:HIS:NE2	2:B:548:GLU:OE2	2.51	0.44
2:B:274:LYS:HE2	2:B:277:LEU:HG	1.99	0.44
1:A:13:GLU:HB2	5:A:249:HOH:O	2.17	0.43
2:B:414:PHE:HD1	2:B:422:VAL:HG21	1.84	0.43
2:B:156:HIS:HD2	5:B:601:HOH:O	2.01	0.43
2:B:26:TRP:CE2	2:B:452:LEU:HD11	2.53	0.43
2:B:517:VAL:HG13	2:B:521:TYR:HB3	2.00	0.43
2:B:214:LYS:HG2	2:B:214:LYS:O	2.19	0.43
2:B:452:LEU:HB2	2:B:476:TYR:HA	2.01	0.43
2:B:287:ARG:HA	2:B:531:PHE:CE1	2.54	0.42
2:B:270:LEU:HD12	2:B:285:VAL:HG13	2.01	0.42
2:B:358:THR:HB	2:B:413:LEU:HB3	2.02	0.42
2:B:326:TRP:CD2	2:B:328:GLY:HA2	2.54	0.42
2:B:388:ASN:OD1	2:B:389:ILE:N	2.52	0.42
1:A:199:LEU:HG	2:B:225:MET:HE2	2.02	0.42
2:B:333:ASN:ND2	2:B:340:GLN:HG2	2.34	0.42
1:A:199:LEU:HG	2:B:225:MET:CE	2.49	0.42
2:B:319:LEU:O	2:B:322:THR:HB	2.20	0.41
2:B:100:LEU:HB2	2:B:120:ARG:HB3	2.02	0.41
1:A:141:THR:O	1:A:145:ARG:HB2	2.19	0.41
1:A:149:SER:HB3	2:B:253:LEU:HD11	2.02	0.41
1:A:188:THR:HA	2:B:243:SER:O	2.21	0.41
1:A:21:ALA:O	2:B:39:GLY:HA3	2.21	0.41
2:B:333:ASN:HD21	2:B:340:GLN:HA	1.86	0.40
1:A:36:ALA:O	1:A:40:LEU:HB2	2.20	0.40
2:B:303:LEU:HD21	2:B:350:TRP:CE2	2.57	0.40
2:B:348:ASN:ND2	2:B:374:SER:OG	2.54	0.40
2:B:387:LEU:HA	2:B:387:LEU:HD12	1.82	0.40

There are no symmetry-related clashes.

5.3 Torsion angles

5.3.1 Protein backbone

In the following table, the Percentiles column shows the percent Ramachandran outliers of the chain as a percentile score with respect to all X-ray entries followed by that with respect to entries of similar resolution.

The Analysed column shows the number of residues for which the backbone conformation was analysed, and the total number of residues.

Mol	Chain	Analysed	Favoured	Allowed	Outliers	Percentiles	
1	A	204/209 (98%)	197 (97%)	7 (3%)	0	100	100
2	B	555/557 (100%)	543 (98%)	12 (2%)	0	100	100
All	All	759/766 (99%)	740 (98%)	19 (2%)	0	100	100

There are no Ramachandran outliers to report.

5.3.2 Protein sidechains

In the following table, the Percentiles column shows the percent sidechain outliers of the chain as a percentile score with respect to all X-ray entries followed by that with respect to entries of similar resolution.

The Analysed column shows the number of residues for which the sidechain conformation was analysed, and the total number of residues.

Mol	Chain	Analysed	Rotameric	Outliers	Percentiles	
1	A	178/180 (99%)	175 (98%)	3 (2%)	68	80
2	B	459/459 (100%)	452 (98%)	7 (2%)	72	83
All	All	637/639 (100%)	627 (98%)	10 (2%)	70	82

All (10) residues with a non-rotameric sidechain are listed below:

Mol	Chain	Res	Type
1	A	31	TYR
1	A	73	TYR
1	A	112	GLU
2	B	20	ASN
2	B	134	GLN
2	B	154	TRP
2	B	173	GLN
2	B	387	LEU

Continued on next page...

Continued from previous page...

Mol	Chain	Res	Type
2	B	534	LYS
2	B	541	GLN

Some sidechains can be flipped to improve hydrogen bonding and reduce clashes. All (16) such sidechains are listed below:

Mol	Chain	Res	Type
1	A	22	ASN
1	A	120	ASN
2	B	110	ASN
2	B	134	GLN
2	B	156	HIS
2	B	168	GLN
2	B	273	GLN
2	B	292	GLN
2	B	304	GLN
2	B	330	ASN
2	B	333	ASN
2	B	348	ASN
2	B	401	GLN
2	B	472	HIS
2	B	541	GLN
2	B	546	HIS

5.3.3 RNA [i](#)

There are no RNA molecules in this entry.

5.4 Non-standard residues in protein, DNA, RNA chains [i](#)

There are no non-standard protein/DNA/RNA residues in this entry.

5.5 Carbohydrates [i](#)

There are no carbohydrates in this entry.

5.6 Ligand geometry [i](#)

Of 2 ligands modelled in this entry, 1 is monoatomic - leaving 1 for Mogul analysis.

In the following table, the Counts columns list the number of bonds (or angles) for which Mogul statistics could be retrieved, the number of bonds (or angles) that are observed in the model and the number of bonds (or angles) that are defined in the chemical component dictionary. The Link column lists molecule types, if any, to which the group is linked. The Z score for a bond length (or angle) is the number of standard deviations the observed value is removed from the expected value. A bond length (or angle) with $|Z| > 2$ is considered an outlier worth inspection. RMSZ is the root-mean-square of all Z scores of the bond lengths (or angles).

Mol	Type	Chain	Res	Link	Bond lengths			Bond angles		
					Counts	RMSZ	$\# Z > 2$	Counts	RMSZ	$\# Z > 2$
4	PAC	B	559	-	7,10,10	0.32	0	9,12,12	0.64	0

In the following table, the Chirals column lists the number of chiral outliers, the number of chiral centers analysed, the number of these observed in the model and the number defined in the chemical component dictionary. Similar counts are reported in the Torsion and Rings columns. '-' means no outliers of that kind were identified.

Mol	Type	Chain	Res	Link	Chirals	Torsions	Rings
4	PAC	B	559	-	-	0/2/4/4	0/1/1/1

There are no bond length outliers.

There are no bond angle outliers.

There are no chirality outliers.

There are no torsion outliers.

There are no ring outliers.

No monomer is involved in short contacts.

5.7 Other polymers [i](#)

There are no such residues in this entry.

5.8 Polymer linkage issues [i](#)

There are no chain breaks in this entry.

6 Fit of model and data

6.1 Protein, DNA and RNA chains

EDS was not executed - this section will therefore be empty.

6.2 Non-standard residues in protein, DNA, RNA chains

EDS was not executed - this section will therefore be empty.

6.3 Carbohydrates

EDS was not executed - this section will therefore be empty.

6.4 Ligands

EDS was not executed - this section will therefore be empty.

6.5 Other polymers

EDS was not executed - this section will therefore be empty.