



Full wwPDB X-ray Structure Validation Report ⓘ

Feb 1, 2016 – 06:00 PM GMT

PDB ID : 4K87
Title : Crystal structure of human prolyl-tRNA synthetase (substrate bound form)
Authors : Hwang, K.Y.; Son, J.H.; Lee, E.H.
Deposited on : 2013-04-18
Resolution : 2.30 Å(reported)

This is a Full wwPDB X-ray Structure Validation Report for a publicly released PDB entry.
We welcome your comments at validation@mail.wwpdb.org
A user guide is available at
<http://wwpdb.org/validation/2016/XrayValidationReportHelp>
with specific help available everywhere you see the ⓘ symbol.

The following versions of software and data (see [references ⓘ](#)) were used in the production of this report:

MolProbity : 4.02b-467
Mogul : 1.7 (RC4), CSD as536be (2015)
Xtriage (Phenix) : 1.9-1692
EDS : rb-20026688
Percentile statistics : 20151230.v01 (using entries in the PDB archive December 30th 2015)
Refmac : 5.8.0135
CCP4 : 6.5.0
Ideal geometry (proteins) : Engh & Huber (2001)
Ideal geometry (DNA, RNA) : Parkinson et al. (1996)
Validation Pipeline (wwPDB-VP) : trunk26865

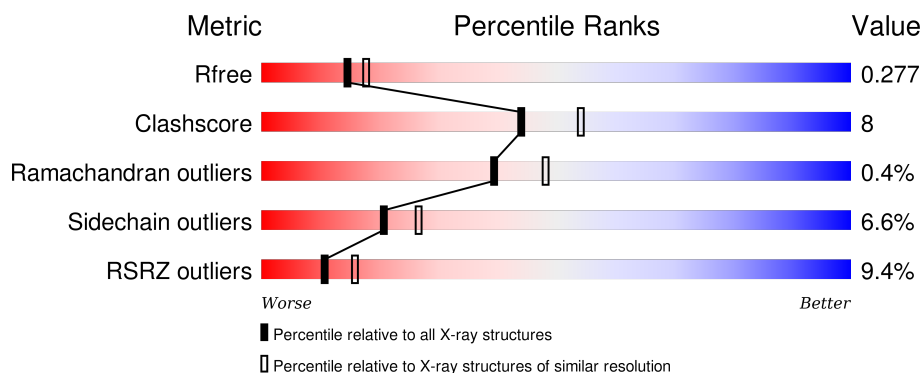
1 Overall quality at a glance

The following experimental techniques were used to determine the structure:

X-RAY DIFFRACTION

The reported resolution of this entry is 2.30 Å.

Percentile scores (ranging between 0-100) for global validation metrics of the entry are shown in the following graphic. The table shows the number of entries on which the scores are based.



Metric	Whole archive (#Entries)	Similar resolution (#Entries, resolution range(Å))
R_{free}	91344	3852 (2.30-2.30)
Clashscore	102246	4452 (2.30-2.30)
Ramachandran outliers	100387	4410 (2.30-2.30)
Sidechain outliers	100360	4409 (2.30-2.30)
RSRZ outliers	91569	3857 (2.30-2.30)

The table below summarises the geometric issues observed across the polymeric chains and their fit to the electron density. The red, orange, yellow and green segments on the lower bar indicate the fraction of residues that contain outliers for ≥ 3 , 2, 1 and 0 types of geometric quality criteria. A grey segment represents the fraction of residues that are not modelled. The numeric value for each fraction is indicated below the corresponding segment, with a dot representing fractions $\leq 5\%$. The upper red bar (where present) indicates the fraction of residues that have poor fit to the electron density. The numeric value is given above the bar.

Mol	Chain	Length	Quality of chain
1	A	535	<div> <div>9%</div> <div>70%</div> <div>19%</div> <div>8%</div> </div>

2 Entry composition

There are 5 unique types of molecules in this entry. The entry contains 4021 atoms, of which 0 are hydrogens and 0 are deuteriums.

In the tables below, the ZeroOcc column contains the number of atoms modelled with zero occupancy, the AltConf column contains the number of residues with at least one atom in alternate conformation and the Trace column contains the number of residues modelled with at most 2 atoms.

- Molecule 1 is a protein called Proline-tRNA ligase.

Mol	Chain	Residues	Atoms					ZeroOcc	AltConf	Trace
1	A	490	Total	C	N	O	S	0	0	0
			3929	2513	665	726	25			

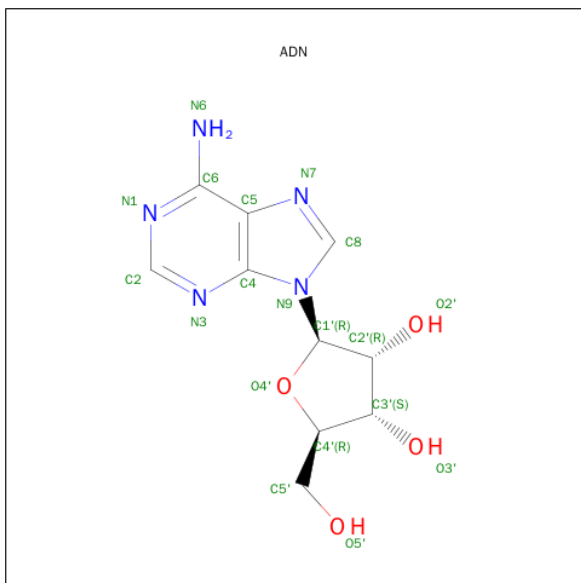
There are 22 discrepancies between the modelled and reference sequences:

Chain	Residue	Modelled	Actual	Comment	Reference
A	-22	MET	-	EXPRESSION TAG	UNP P07814
A	-21	GLY	-	EXPRESSION TAG	UNP P07814
A	-20	SER	-	EXPRESSION TAG	UNP P07814
A	-19	SER	-	EXPRESSION TAG	UNP P07814
A	-18	HIS	-	EXPRESSION TAG	UNP P07814
A	-17	HIS	-	EXPRESSION TAG	UNP P07814
A	-16	HIS	-	EXPRESSION TAG	UNP P07814
A	-15	HIS	-	EXPRESSION TAG	UNP P07814
A	-14	HIS	-	EXPRESSION TAG	UNP P07814
A	-13	HIS	-	EXPRESSION TAG	UNP P07814
A	-12	SER	-	EXPRESSION TAG	UNP P07814
A	-11	SER	-	EXPRESSION TAG	UNP P07814
A	-10	GLY	-	EXPRESSION TAG	UNP P07814
A	-9	LEU	-	EXPRESSION TAG	UNP P07814
A	-8	VAL	-	EXPRESSION TAG	UNP P07814
A	-7	PRO	-	EXPRESSION TAG	UNP P07814
A	-6	ARG	-	EXPRESSION TAG	UNP P07814
A	-5	GLY	-	EXPRESSION TAG	UNP P07814
A	-4	SER	-	EXPRESSION TAG	UNP P07814
A	-3	HIS	-	EXPRESSION TAG	UNP P07814
A	-2	MET	-	EXPRESSION TAG	UNP P07814
A	-1	ALA	-	EXPRESSION TAG	UNP P07814

- Molecule 2 is ZINC ION (three-letter code: ZN) (formula: Zn).

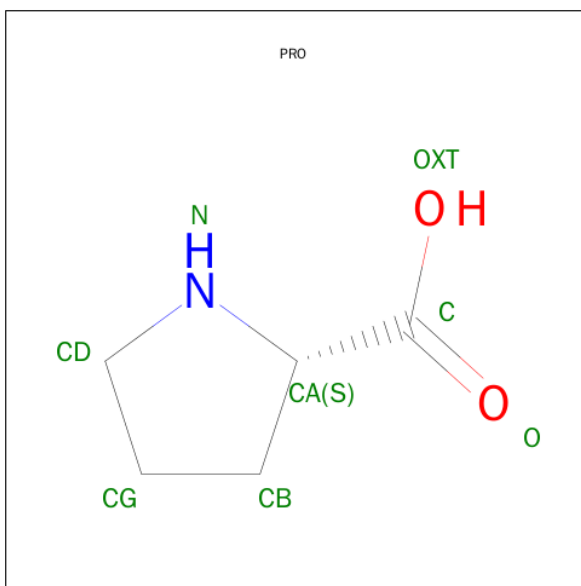
Mol	Chain	Residues	Atoms		ZeroOcc	AltConf
2	A	1	Total	Zn	0	0
			1	1		

- Molecule 3 is ADENOSINE (three-letter code: ADN) (formula: $C_{10}H_{13}N_5O_4$).



Mol	Chain	Residues	Atoms				ZeroOcc	AltConf
3	A	1	Total	C	N	O	0	0
			19	10	5	4		

- Molecule 4 is PROLINE (three-letter code: PRO) (formula: $C_5H_9NO_2$).



Mol	Chain	Residues	Atoms				ZeroOcc	AltConf
4	A	1	Total	C	N	O	0	0
			8	5	1	2		

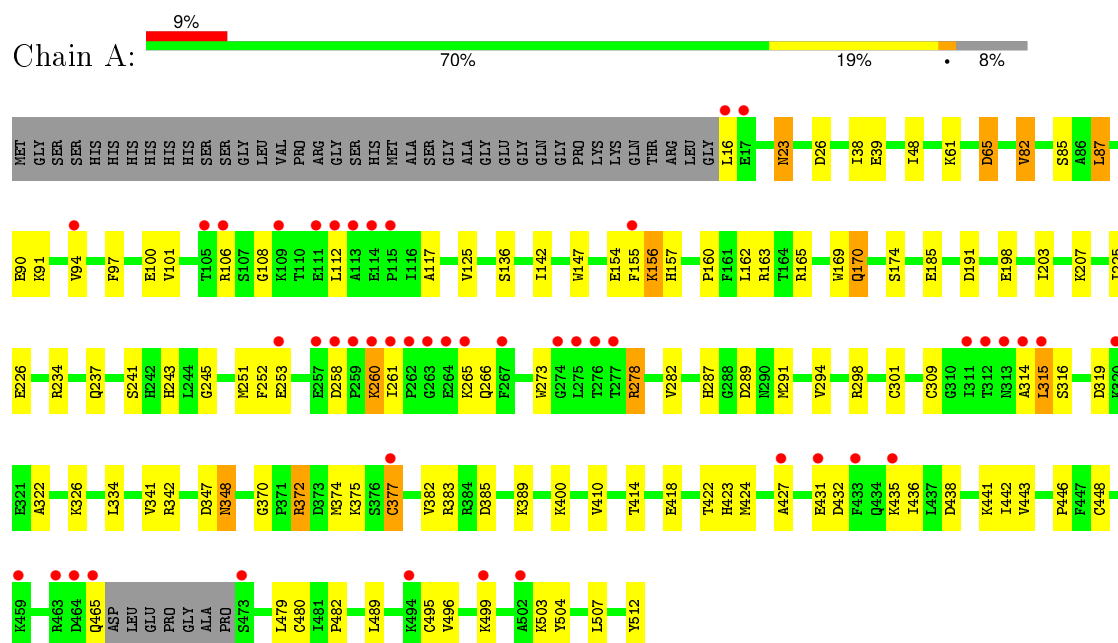
- Molecule 5 is water.

Mol	Chain	Residues	Atoms		ZeroOcc	AltConf
5	A	64	Total	O	0	0
			64	64		

3 Residue-property plots [i](#)

These plots are drawn for all protein, RNA and DNA chains in the entry. The first graphic for a chain summarises the proportions of errors displayed in the second graphic. The second graphic shows the sequence view annotated by issues in geometry and electron density. Residues are color-coded according to the number of geometric quality criteria for which they contain at least one outlier: green = 0, yellow = 1, orange = 2 and red = 3 or more. A red dot above a residue indicates a poor fit to the electron density ($\text{RSRZ} > 2$). Stretches of 2 or more consecutive residues without any outlier are shown as a green connector. Residues present in the sample, but not in the model, are shown in grey.

- Molecule 1: Proline-tRNA ligase



4 Data and refinement statistics

Property	Value	Source
Space group	P 31 2 1	Depositor
Cell constants a, b, c, α , β , γ	120.16Å 120.16Å 107.10Å 90.00° 90.00° 120.00°	Depositor
Resolution (Å)	39.98 – 2.30 39.98 – 2.30	Depositor EDS
% Data completeness (in resolution range)	99.7 (39.98-2.30) 99.7 (39.98-2.30)	Depositor EDS
R_{merge}	(Not available)	Depositor
R_{sym}	(Not available)	Depositor
$\langle I/\sigma(I) \rangle$ ¹	3.46 (at 2.29Å)	Xtriage
Refinement program	PHENIX (phenix.refine: 1.8.1_1168)	Depositor
R, R_{free}	0.217 , 0.267 0.231 , 0.277	Depositor DCC
R_{free} test set	2011 reflections (5.31%)	DCC
Wilson B-factor (Å ²)	49.6	Xtriage
Anisotropy	0.037	Xtriage
Bulk solvent k_{sol} (e/Å ³), B_{sol} (Å ²)	0.35 , 63.2	EDS
Estimated twinning fraction	0.034 for -h,-k,l	Xtriage
L-test for twinning ²	$\langle L \rangle = 0.44$, $\langle L^2 \rangle = 0.27$	Xtriage
Outliers	0 of 39887 reflections	Xtriage
F_o, F_c correlation	0.95	EDS
Total number of atoms	4021	wwPDB-VP
Average B, all atoms (Å ²)	71.0	wwPDB-VP

Xtriage's analysis on translational NCS is as follows: *The largest off-origin peak in the Patterson function is 3.17% of the height of the origin peak. No significant pseudotranslation is detected.*

¹Intensities estimated from amplitudes.

²Theoretical values of $\langle |L| \rangle$, $\langle L^2 \rangle$ for acentric reflections are 0.5, 0.375 respectively for untwinned datasets, and 0.333, 0.2 for perfectly twinned datasets.

5 Model quality [i](#)

5.1 Standard geometry [i](#)

Bond lengths and bond angles in the following residue types are not validated in this section: ADN, ZN

The Z score for a bond length (or angle) is the number of standard deviations the observed value is removed from the expected value. A bond length (or angle) with $|Z| > 5$ is considered an outlier worth inspection. RMSZ is the root-mean-square of all Z scores of the bond lengths (or angles).

Mol	Chain	Bond lengths		Bond angles	
		RMSZ	$\# Z > 5$	RMSZ	$\# Z > 5$
1	A	0.56	2/4022 (0.0%)	0.64	2/5445 (0.0%)

All (2) bond length outliers are listed below:

Mol	Chain	Res	Type	Atoms	Z	Observed(Å)	Ideal(Å)
1	A	377	CYS	CB-SG	13.78	2.05	1.82
1	A	301	CYS	CB-SG	8.72	1.97	1.82

All (2) bond angle outliers are listed below:

Mol	Chain	Res	Type	Atoms	Z	Observed(°)	Ideal(°)
1	A	377	CYS	CA-CB-SG	6.28	125.30	114.00
1	A	301	CYS	CA-CB-SG	6.26	125.26	114.00

There are no chirality outliers.

There are no planarity outliers.

5.2 Too-close contacts [i](#)

In the following table, the Non-H and H(model) columns list the number of non-hydrogen atoms and hydrogen atoms in the chain respectively. The H(added) column lists the number of hydrogen atoms added and optimized by MolProbity. The Clashes column lists the number of clashes within the asymmetric unit, whereas Symm-Clashes lists symmetry related clashes.

Mol	Chain	Non-H	H(model)	H(added)	Clashes	Symm-Clashes
1	A	3929	0	3892	63	0
2	A	1	0	0	0	0
3	A	19	0	13	1	0
4	A	8	0	7	0	0

Continued on next page...

Continued from previous page...

Mol	Chain	Non-H	H(model)	H(added)	Clashes	Symm-Clashes
5	A	64	0	0	4	0
All	All	4021	0	3912	63	0

The all-atom clashscore is defined as the number of clashes found per 1000 atoms (including hydrogen atoms). The all-atom clashscore for this structure is 8.

All (63) close contacts within the same asymmetric unit are listed below, sorted by their clash magnitude.

Atom-1	Atom-2	Interatomic distance (Å)	Clash overlap (Å)
1:A:377:CYS:SG	1:A:377:CYS:CB	2.05	1.44
1:A:322:ALA:O	5:A:759:HOH:O	2.09	0.70
1:A:348:ASN:OD1	1:A:348:ASN:N	2.25	0.68
1:A:410:VAL:O	1:A:414:THR:HG23	1.96	0.66
1:A:163:ARG:NH2	1:A:512:TYR:O	2.30	0.64
1:A:289:ASP:HB3	1:A:291:MET:H	1.63	0.64
1:A:427:ALA:HB2	1:A:436:ILE:HD12	1.81	0.63
1:A:191:ASP:OD1	1:A:207:LYS:NZ	2.34	0.59
1:A:100:GLU:HG2	1:A:154:GLU:HG2	1.85	0.59
1:A:82:VAL:HB	1:A:125:VAL:HG22	1.86	0.56
1:A:207:LYS:HG2	1:A:225:ILE:HG22	1.88	0.56
1:A:258:ASP:HB2	1:A:266:GLN:HG3	1.88	0.56
1:A:155:PHE:HA	1:A:165:ARG:HH21	1.72	0.55
1:A:424:MET:O	5:A:751:HOH:O	2.18	0.54
1:A:156:LYS:HD2	1:A:163:ARG:HD2	1.90	0.54
1:A:154:GLU:HB2	1:A:156:LYS:NZ	2.23	0.54
1:A:432:ASP:HA	1:A:435:LYS:HE3	1.88	0.54
1:A:309:CYS:SG	5:A:728:HOH:O	2.58	0.53
1:A:479:LEU:HD12	1:A:507:LEU:HG	1.91	0.53
1:A:38:ILE:HD13	1:A:160:PRO:HB3	1.89	0.53
1:A:87:LEU:HD22	1:A:94:VAL:HG23	1.91	0.53
1:A:174:SER:OG	1:A:185:GLU:OE2	2.27	0.53
1:A:448:CYS:O	1:A:503:LYS:HG3	2.10	0.52
1:A:316:SER:HB3	1:A:319:ASP:HB2	1.93	0.51
1:A:383:ARG:NH1	1:A:385:ASP:OD2	2.44	0.50
1:A:334:LEU:HB2	1:A:341:VAL:HG11	1.93	0.50
1:A:203:ILE:HD13	1:A:282:VAL:HG12	1.93	0.50
1:A:495:CYS:SG	1:A:496:VAL:N	2.85	0.49
1:A:90:GLU:HG2	1:A:251:MET:HG3	1.94	0.49
1:A:382:VAL:HG22	1:A:389:LYS:HG2	1.94	0.48
1:A:154:GLU:HB2	1:A:156:LYS:CE	2.43	0.48
1:A:480:CYS:O	1:A:482:PRO:HD3	2.12	0.48

Continued on next page...

Continued from previous page...

Atom-1	Atom-2	Interatomic distance (Å)	Clash overlap (Å)
1:A:61:LYS:O	1:A:65:ASP:HB2	2.14	0.48
1:A:237:GLN:OE1	3:A:602:ADN:H3'	2.14	0.48
1:A:446:PRO:HB3	1:A:489:LEU:HD11	1.95	0.47
1:A:260:LYS:HD2	1:A:261:ILE:HG13	1.96	0.47
1:A:198:GLU:HG2	1:A:203:ILE:O	2.15	0.46
1:A:23:ASN:N	1:A:23:ASN:OD1	2.42	0.46
1:A:241:SER:HA	1:A:273:TRP:HB3	1.97	0.46
1:A:147:TRP:CE3	1:A:170:GLN:HB3	2.50	0.46
1:A:424:MET:HA	1:A:442:ILE:O	2.16	0.46
1:A:39:GLU:HB3	1:A:48:ILE:HB	1.97	0.46
1:A:82:VAL:HG13	1:A:117:ALA:HB3	1.97	0.45
1:A:154:GLU:HB2	1:A:156:LYS:HZ3	1.80	0.45
1:A:287:HIS:O	5:A:749:HOH:O	2.21	0.45
1:A:61:LYS:HE3	1:A:61:LYS:HB2	1.74	0.44
1:A:423:HIS:O	1:A:441:LYS:HB3	2.18	0.44
1:A:298:ARG:HB3	1:A:298:ARG:NH1	2.32	0.44
1:A:438:ASP:OD2	1:A:465:GLN:HB3	2.18	0.44
1:A:370:GLY:O	1:A:374:MET:HG3	2.18	0.44
1:A:142:ILE:O	1:A:174:SER:HA	2.18	0.43
1:A:23:ASN:HB2	1:A:26:ASP:HB2	2.00	0.43
1:A:252:PHE:O	1:A:253:GLU:HG2	2.19	0.42
1:A:372:ARG:HG3	1:A:372:ARG:H	1.44	0.42
1:A:243:HIS:CD2	1:A:245:GLY:H	2.38	0.42
1:A:427:ALA:HB3	1:A:443:VAL:HG11	2.02	0.42
1:A:372:ARG:HA	1:A:375:LYS:HD3	2.01	0.42
1:A:106:ARG:NH1	1:A:108:GLY:O	2.52	0.42
1:A:315:LEU:HD22	1:A:315:LEU:HA	1.95	0.41
1:A:418:GLU:O	1:A:422:THR:HG23	2.19	0.41
1:A:162:LEU:O	1:A:278:ARG:NH1	2.52	0.41
1:A:38:ILE:CD1	1:A:160:PRO:HB3	2.51	0.41
1:A:97:PHE:O	1:A:101:VAL:HG23	2.20	0.41

There are no symmetry-related clashes.

5.3 Torsion angles [i](#)

5.3.1 Protein backbone [i](#)

In the following table, the Percentiles column shows the percent Ramachandran outliers of the chain as a percentile score with respect to all X-ray entries followed by that with respect to entries of similar resolution.

The Analysed column shows the number of residues for which the backbone conformation was analysed, and the total number of residues.

Mol	Chain	Analysed	Favoured	Allowed	Outliers	Percentiles	
1	A	486/535 (91%)	462 (95%)	22 (4%)	2 (0%)	39	48

All (2) Ramachandran outliers are listed below:

Mol	Chain	Res	Type
1	A	314	ALA
1	A	499	LYS

5.3.2 Protein sidechains ⓘ

In the following table, the Percentiles column shows the percent sidechain outliers of the chain as a percentile score with respect to all X-ray entries followed by that with respect to entries of similar resolution.

The Analysed column shows the number of residues for which the sidechain conformation was analysed, and the total number of residues.

Mol	Chain	Analysed	Rotameric	Outliers	Percentiles	
1	A	423/456 (93%)	395 (93%)	28 (7%)	21	27

All (28) residues with a non-rotameric sidechain are listed below:

Mol	Chain	Res	Type
1	A	16	LEU
1	A	23	ASN
1	A	65	ASP
1	A	82	VAL
1	A	85	SER
1	A	87	LEU
1	A	91	LYS
1	A	112	LEU
1	A	136	SER
1	A	156	LYS
1	A	157	HIS
1	A	169	TRP
1	A	170	GLN
1	A	226	GLU
1	A	234	ARG
1	A	260	LYS
1	A	265	LYS

Continued on next page...

Continued from previous page...

Mol	Chain	Res	Type
1	A	278	ARG
1	A	294	VAL
1	A	315	LEU
1	A	326	LYS
1	A	342	ARG
1	A	347	ASP
1	A	348	ASN
1	A	372	ARG
1	A	400	LYS
1	A	431	GLU
1	A	504	TYR

Some sidechains can be flipped to improve hydrogen bonding and reduce clashes. There are no such sidechains identified.

5.3.3 RNA [i](#)

There are no RNA molecules in this entry.

5.4 Non-standard residues in protein, DNA, RNA chains [i](#)

There are no non-standard protein/DNA/RNA residues in this entry.

5.5 Carbohydrates [i](#)

There are no carbohydrates in this entry.

5.6 Ligand geometry [i](#)

Of 3 ligands modelled in this entry, 1 is monoatomic - leaving 2 for Mogul analysis.

In the following table, the Counts columns list the number of bonds (or angles) for which Mogul statistics could be retrieved, the number of bonds (or angles) that are observed in the model and the number of bonds (or angles) that are defined in the chemical component dictionary. The Link column lists molecule types, if any, to which the group is linked. The Z score for a bond length (or angle) is the number of standard deviations the observed value is removed from the expected value. A bond length (or angle) with $|Z| > 2$ is considered an outlier worth inspection. RMSZ is the root-mean-square of all Z scores of the bond lengths (or angles).

Mol	Type	Chain	Res	Link	Bond lengths			Bond angles		
					Counts	RMSZ	# Z > 2	Counts	RMSZ	# Z > 2
3	ADN	A	602	-	16,21,21	1.88	4 (25%)	16,31,31	3.74	3 (18%)
4	PRO	A	603	-	4,8,8	0.67	0	5,10,10	1.07	0

In the following table, the Chirals column lists the number of chiral outliers, the number of chiral centers analysed, the number of these observed in the model and the number defined in the chemical component dictionary. Similar counts are reported in the Torsion and Rings columns. '-' means no outliers of that kind were identified.

Mol	Type	Chain	Res	Link	Chirals	Torsions	Rings
3	ADN	A	602	-	-	0/2/22/22	0/3/3/3
4	PRO	A	603	-	-	0/0/11/11	0/1/1/1

All (4) bond length outliers are listed below:

Mol	Chain	Res	Type	Atoms	Z	Observed(Å)	Ideal(Å)
3	A	602	ADN	C5-C4	-3.79	1.31	1.40
3	A	602	ADN	O4'-C4'	-2.37	1.39	1.45
3	A	602	ADN	C5-N7	-2.22	1.31	1.39
3	A	602	ADN	C2-N3	3.93	1.39	1.32

All (3) bond angle outliers are listed below:

Mol	Chain	Res	Type	Atoms	Z	Observed(°)	Ideal(°)
3	A	602	ADN	N3-C2-N1	-13.32	118.69	128.89
3	A	602	ADN	C4'-O4'-C1'	-4.53	104.74	109.72
3	A	602	ADN	C5'-C4'-C3'	-2.78	108.50	115.08

There are no chirality outliers.

There are no torsion outliers.

There are no ring outliers.

1 monomer is involved in 1 short contact:

Mol	Chain	Res	Type	Clashes	Symm-Clashes
3	A	602	ADN	1	0

5.7 Other polymers ⓘ

There are no such residues in this entry.

5.8 Polymer linkage issues ⓘ

There are no chain breaks in this entry.

6 Fit of model and data

6.1 Protein, DNA and RNA chains

In the following table, the column labelled ‘#RSRZ> 2’ contains the number (and percentage) of RSRZ outliers, followed by percent RSRZ outliers for the chain as percentile scores relative to all X-ray entries and entries of similar resolution. The OWAB column contains the minimum, median, 95th percentile and maximum values of the occupancy-weighted average B-factor per residue. The column labelled ‘Q< 0.9’ lists the number of (and percentage) of residues with an average occupancy less than 0.9.

Mol	Chain	Analysed	<RSRZ>	#RSRZ>2	OWAB(Å ²)	Q<0.9
1	A	490/535 (91%)	0.48	46 (9%) 11 16	44, 68, 104, 130	0

All (46) RSRZ outliers are listed below:

Mol	Chain	Res	Type	RSRZ
1	A	313	ASN	6.6
1	A	464	ASP	5.3
1	A	261	ILE	5.1
1	A	314	ALA	4.9
1	A	315	LEU	4.8
1	A	259	PRO	4.7
1	A	312	THR	4.6
1	A	265	LYS	3.9
1	A	499	LYS	3.7
1	A	262	PRO	3.6
1	A	463	ARG	3.6
1	A	155	PHE	3.4
1	A	264	GLU	3.3
1	A	473	SER	3.2
1	A	263	GLY	3.2
1	A	113	ALA	3.1
1	A	502	ALA	3.0
1	A	258	ASP	3.0
1	A	115	PRO	3.0
1	A	105	THR	2.9
1	A	311	ILE	2.9
1	A	260	LYS	2.9
1	A	114	GLU	2.8
1	A	435	LYS	2.8
1	A	94	VAL	2.8
1	A	257	GLU	2.8
1	A	320	LYS	2.8

Continued on next page...

Continued from previous page...

Mol	Chain	Res	Type	RSRZ
1	A	17	GLU	2.7
1	A	427	ALA	2.7
1	A	465	GLN	2.7
1	A	377	CYS	2.6
1	A	109	LYS	2.5
1	A	431	GLU	2.5
1	A	277	THR	2.4
1	A	274	GLY	2.4
1	A	433	PHE	2.4
1	A	275	LEU	2.3
1	A	494	LYS	2.3
1	A	253	GLU	2.3
1	A	112	LEU	2.3
1	A	16	LEU	2.2
1	A	459	LYS	2.2
1	A	276	THR	2.2
1	A	106	ARG	2.1
1	A	111	GLU	2.1
1	A	267	PHE	2.0

6.2 Non-standard residues in protein, DNA, RNA chains [i](#)

There are no non-standard protein/DNA/RNA residues in this entry.

6.3 Carbohydrates [i](#)

There are no carbohydrates in this entry.

6.4 Ligands [i](#)

In the following table, the Atoms column lists the number of modelled atoms in the group and the number defined in the chemical component dictionary. LLDF column lists the quality of electron density of the group with respect to its neighbouring residues in protein, DNA or RNA chains. The B-factors column lists the minimum, median, 95th percentile and maximum values of B factors of atoms in the group. The column labelled 'Q< 0.9' lists the number of atoms with occupancy less than 0.9.

Mol	Type	Chain	Res	Atoms	RSCC	RSR	LLDF	B-factors(Å ²)	Q<0.9
3	ADN	A	602	19/19	0.84	0.24	0.76	80,88,94,95	0
4	PRO	A	603	8/8	0.95	0.17	0.07	57,62,64,65	0
2	ZN	A	601	1/1	0.96	0.10	-0.83	87,87,87,87	0

6.5 Other polymers [i](#)

There are no such residues in this entry.