



Full wwPDB X-ray Structure Validation Report ⓘ

Feb 1, 2016 – 06:01 PM GMT

PDB ID : 4K8X
Title : Binary complex of 9N DNA polymerase in the replicative state
Authors : Betz, K.; Diederichs, K.; Marx, A.
Deposited on : 2013-04-19
Resolution : 2.28 Å(reported)

This is a Full wwPDB X-ray Structure Validation Report for a publicly released PDB entry.
We welcome your comments at validation@mail.wwpdb.org
A user guide is available at
<http://wwpdb.org/validation/2016/XrayValidationReportHelp>
with specific help available everywhere you see the ⓘ symbol.

The following versions of software and data (see [references ⓘ](#)) were used in the production of this report:

MolProbity : 4.02b-467
Mogul : 1.7 (RC4), CSD as536be (2015)
Xtriage (Phenix) : 1.9-1692
EDS : rb-20026688
Percentile statistics : 20151230.v01 (using entries in the PDB archive December 30th 2015)
Refmac : 5.8.0135
CCP4 : 6.5.0
Ideal geometry (proteins) : Engh & Huber (2001)
Ideal geometry (DNA, RNA) : Parkinson et al. (1996)
Validation Pipeline (wwPDB-VP) : trunk26865

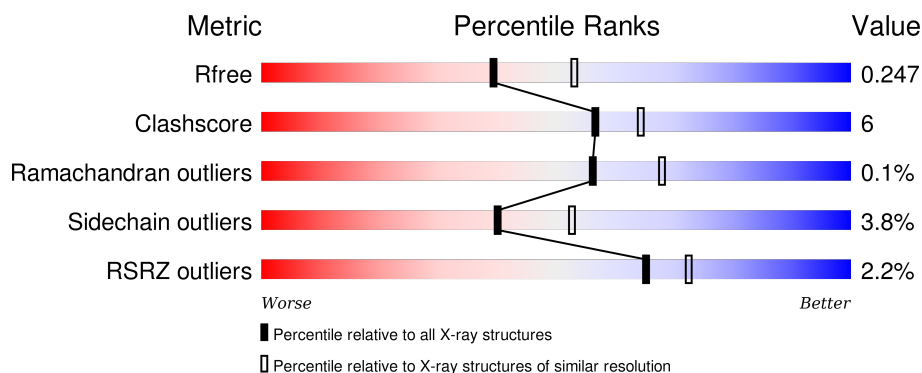
1 Overall quality at a glance ⓘ

The following experimental techniques were used to determine the structure:

X-RAY DIFFRACTION

The reported resolution of this entry is 2.28 Å.

Percentile scores (ranging between 0-100) for global validation metrics of the entry are shown in the following graphic. The table shows the number of entries on which the scores are based.



Metric	Whole archive (#Entries)	Similar resolution (#Entries, resolution range(Å))
R_{free}	91344	5193 (2.30-2.26)
Clashscore	102246	5929 (2.30-2.26)
Ramachandran outliers	100387	5851 (2.30-2.26)
Sidechain outliers	100360	5850 (2.30-2.26)
RSRZ outliers	91569	5204 (2.30-2.26)

The table below summarises the geometric issues observed across the polymeric chains and their fit to the electron density. The red, orange, yellow and green segments on the lower bar indicate the fraction of residues that contain outliers for ≥ 3 , 2, 1 and 0 types of geometric quality criteria. A grey segment represents the fraction of residues that are not modelled. The numeric value for each fraction is indicated below the corresponding segment, with a dot representing fractions $\leq 5\%$. The upper red bar (where present) indicates the fraction of residues that have poor fit to the electron density. The numeric value is given above the bar.

Mol	Chain	Length	Quality of chain
1	A	775	<div> <div>2%</div> <div>82%</div> <div>15%</div> <div>..</div> </div>
2	T	16	<div> <div>25%</div> <div>50%</div> <div>25%</div> </div>
3	P	12	<div> <div>58%</div> <div>42%</div> </div>

The following table lists non-polymeric compounds, carbohydrate monomers and non-standard residues in protein, DNA, RNA chains that are outliers for geometric or electron-density-fit criteria:

Mol	Type	Chain	Res	Chirality	Geometry	Clashes	Electron density
4	SO4	A	812	-	-	-	X
6	5CY	T	101[A]	-	-	-	X
6	5CY	T	101[B]	-	-	-	X

2 Entry composition

There are 8 unique types of molecules in this entry. The entry contains 7110 atoms, of which 0 are hydrogens and 0 are deuteriums.

In the tables below, the ZeroOcc column contains the number of atoms modelled with zero occupancy, the AltConf column contains the number of residues with at least one atom in alternate conformation and the Trace column contains the number of residues modelled with at most 2 atoms.

- Molecule 1 is a protein called DNA polymerase.

Mol	Chain	Residues	Atoms					ZeroOcc	AltConf	Trace
1	A	759	Total	C	N	O	S	0	5	0
			6252	4027	1074	1136	15			

There are 2 discrepancies between the modelled and reference sequences:

Chain	Residue	Modelled	Actual	Comment	Reference
A	141	ALA	ASP	ENGINEERED MUTATION	UNP Q56366
A	143	ALA	GLU	ENGINEERED MUTATION	UNP Q56366

- Molecule 2 is a DNA chain called DNA (5'-D(P*AP*AP*AP*GP*GP*CP*GP*CP*AP*GP*TP*TP*CP*GP*CP*G)-3').

Mol	Chain	Residues	Atoms					ZeroOcc	AltConf	Trace
2	T	16	Total	C	N	O	P	0	1	0
			353	166	71	99	17			

- Molecule 3 is a DNA chain called DNA (5'-D(*CP*GP*CP*GP*AP*AP*CP*TP*GP*CP*GP*(DOC))-3').

Mol	Chain	Residues	Atoms					ZeroOcc	AltConf	Trace
3	P	12	Total	C	N	O	P	0	0	0
			241	115	47	68	11			

- Molecule 4 is SULFATE ION (three-letter code: SO4) (formula: O₄S).

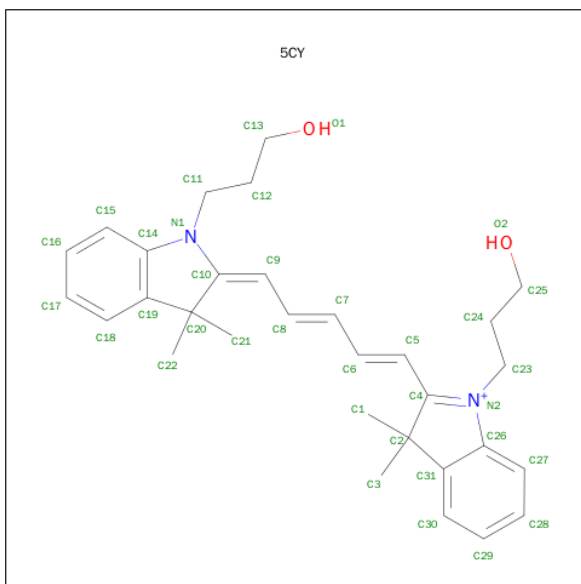


Mol	Chain	Residues	Atoms			ZeroOcc	AltConf
4	A	1	Total	O	S	0	0
			5	4	1		
4	A	1	Total	O	S	0	0
			5	4	1		
4	A	1	Total	O	S	0	0
			5	4	1		
4	A	1	Total	O	S	0	0
			5	4	1		
4	A	1	Total	O	S	0	0
			5	4	1		
4	A	1	Total	O	S	0	0
			5	4	1		
4	A	1	Total	O	S	0	0
			5	4	1		
4	A	1	Total	O	S	0	0
			5	4	1		

- Molecule 5 is CHLORIDE ION (three-letter code: CL) (formula: Cl).

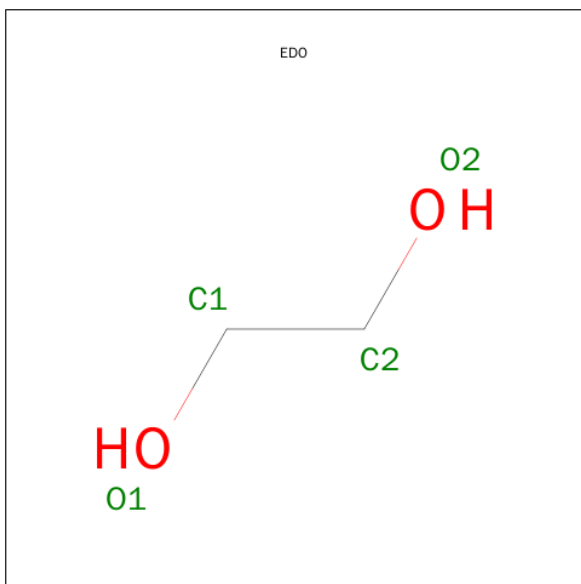
Mol	Chain	Residues	Atoms		ZeroOcc	AltConf
5	A	1	Total	Cl	0	0
			1	1		

- Molecule 6 is 1-(3-HYDROXYPROPYL)-2-{(1E,3E,5E)-5-[1-(3-HYDROXYPROPYL)-3,3-DIMETHYL-1,3-DIHYDRO-2H-INDOL-2-YLIDENE]PENTA-1,3-DIEN-1-YL}-3,3-DIMETHYL-3H-INDOLIUM (three-letter code: 5CY) (formula: $C_{31}H_{39}N_2O_2$).



Mol	Chain	Residues	Atoms				ZeroOcc	AltConf
6	T	1	Total	C	N	O	0	1
			70	62	4	4		

- Molecule 7 is 1,2-ETHANEDIOL (three-letter code: EDO) (formula: $C_2H_6O_2$).



Mol	Chain	Residues	Atoms			ZeroOcc	AltConf
7	T	1	Total	C	O	0	0
			4	2	2		

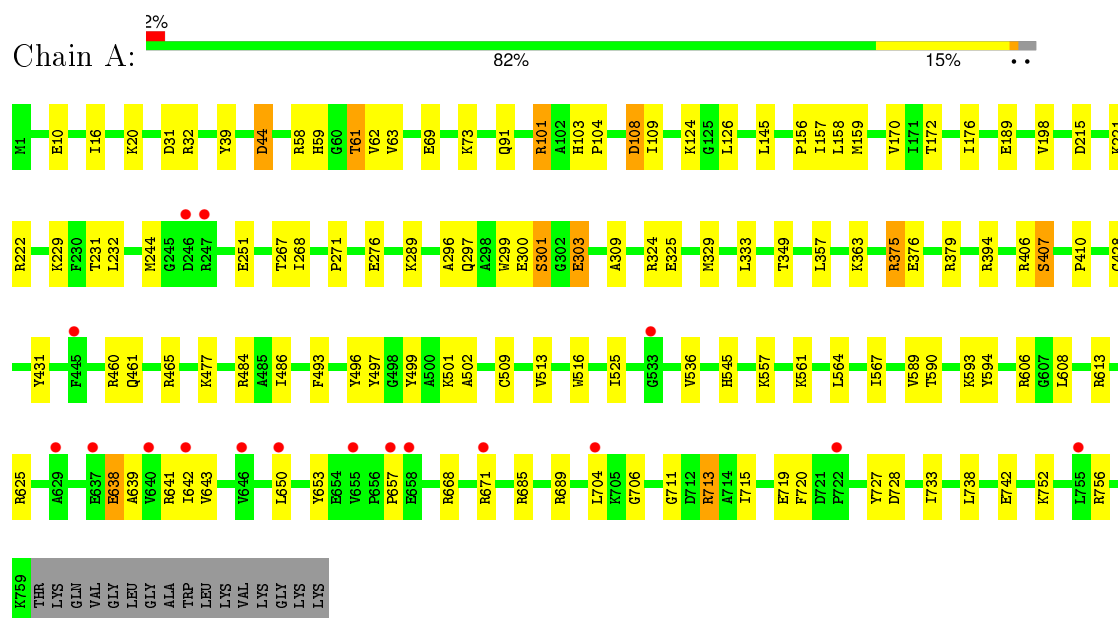
- Molecule 8 is water.

Mol	Chain	Residues	Atoms		ZeroOcc	AltConf
8	A	113	Total 113	O 113	0	0
8	T	12	Total 12	O 12	0	0
8	P	9	Total 9	O 9	0	0

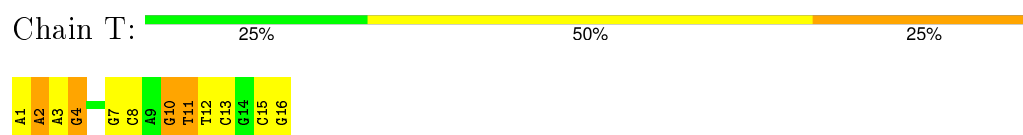
3 Residue-property plots [i](#)

These plots are drawn for all protein, RNA and DNA chains in the entry. The first graphic for a chain summarises the proportions of errors displayed in the second graphic. The second graphic shows the sequence view annotated by issues in geometry and electron density. Residues are color-coded according to the number of geometric quality criteria for which they contain at least one outlier: green = 0, yellow = 1, orange = 2 and red = 3 or more. A red dot above a residue indicates a poor fit to the electron density ($RSRZ > 2$). Stretches of 2 or more consecutive residues without any outlier are shown as a green connector. Residues present in the sample, but not in the model, are shown in grey.

- Molecule 1: DNA polymerase



- Molecule 2: DNA (5'-D(P*AP*AP*AP*GP*GP*CP*GP*CP*AP*GP*TP*TP*CP*GP*CP*G)-3')



- Molecule 3: DNA (5'-D(*CP*GP*CP*GP*AP*AP*CP*TP*GP*CP*GP*(DOC))-3')



4 Data and refinement statistics

Property	Value	Source
Space group	P 21 21 2	Depositor
Cell constants a, b, c, α , β , γ	112.22Å 142.62Å 66.70Å 90.00° 90.00° 90.00°	Depositor
Resolution (Å)	48.71 – 2.28 48.71 – 2.28	Depositor EDS
% Data completeness (in resolution range)	99.8 (48.71-2.28) 99.9 (48.71-2.28)	Depositor EDS
R_{merge}	(Not available)	Depositor
R_{sym}	(Not available)	Depositor
$\langle I/\sigma(I) \rangle$ ¹	1.51 (at 2.29Å)	Xtriage
Refinement program	PHENIX (phenix.refine: dev_1358)	Depositor
R, R_{free}	0.195 , 0.238 0.205 , 0.247	Depositor DCC
R_{free} test set	2524 reflections (5.36%)	DCC
Wilson B-factor (Å ²)	44.0	Xtriage
Anisotropy	0.548	Xtriage
Bulk solvent k_{sol} (e/Å ³), B_{sol} (Å ²)	0.33 , 39.1	EDS
Estimated twinning fraction	No twinning to report.	Xtriage
L-test for twinning ²	$\langle L \rangle = 0.48$, $\langle L^2 \rangle = 0.31$	Xtriage
Outliers	1 of 49586 reflections (0.002%)	Xtriage
F_o, F_c correlation	0.96	EDS
Total number of atoms	7110	wwPDB-VP
Average B, all atoms (Å ²)	61.0	wwPDB-VP

Xtriage's analysis on translational NCS is as follows: *The largest off-origin peak in the Patterson function is 3.41% of the height of the origin peak. No significant pseudotranslation is detected.*

¹Intensities estimated from amplitudes.

²Theoretical values of $\langle |L| \rangle$, $\langle L^2 \rangle$ for acentric reflections are 0.5, 0.375 respectively for untwinned datasets, and 0.333, 0.2 for perfectly twinned datasets.

5 Model quality [i](#)

5.1 Standard geometry [i](#)

Bond lengths and bond angles in the following residue types are not validated in this section: DOC, SO4, EDO, 5CY, CL

The Z score for a bond length (or angle) is the number of standard deviations the observed value is removed from the expected value. A bond length (or angle) with $|Z| > 5$ is considered an outlier worth inspection. RMSZ is the root-mean-square of all Z scores of the bond lengths (or angles).

Mol	Chain	Bond lengths		Bond angles	
		RMSZ	# $ Z > 5$	RMSZ	# $ Z > 5$
1	A	0.41	0/6406	0.56	0/8637
2	T	0.75	0/397	1.49	7/611 (1.1%)
3	P	0.65	0/250	1.28	4/384 (1.0%)
All	All	0.45	0/7053	0.70	11/9632 (0.1%)

There are no bond length outliers.

All (11) bond angle outliers are listed below:

Mol	Chain	Res	Type	Atoms	Z	Observed(°)	Ideal(°)
2	T	2[A]	DA	O4'-C1'-N9	9.38	114.57	108.00
2	T	2[B]	DA	O4'-C1'-N9	9.38	114.57	108.00
3	P	10	DC	O4'-C4'-C3'	-9.21	100.48	106.00
2	T	4	DG	O4'-C1'-N9	6.74	112.72	108.00
2	T	10	DG	O4'-C4'-C3'	-6.16	102.04	104.50
3	P	10	DC	C1'-O4'-C4'	-6.15	103.95	110.10
2	T	13	DC	O4'-C1'-N1	5.62	111.94	108.00
3	P	11	DG	O5'-P-OP2	-5.52	100.73	105.70
2	T	3	DA	O4'-C1'-N9	-5.48	104.16	108.00
3	P	9	DG	O4'-C1'-N9	5.35	111.75	108.00
2	T	11	DT	C5-C4-O4	-5.07	121.35	124.90

There are no chirality outliers.

There are no planarity outliers.

5.2 Too-close contacts [i](#)

In the following table, the Non-H and H(model) columns list the number of non-hydrogen atoms and hydrogen atoms in the chain respectively. The H(added) column lists the number of hydrogen

atoms added and optimized by MolProbity. The Clashes column lists the number of clashes within the asymmetric unit, whereas Symm-Clashes lists symmetry related clashes.

Mol	Chain	Non-H	H(model)	H(added)	Clashes	Symm-Clashes
1	A	6252	0	6323	69	0
2	T	353	0	190	10	0
3	P	241	0	135	1	0
4	A	55	0	0	2	0
5	A	1	0	0	0	0
6	T	70	0	76	9	0
7	T	4	0	6	1	0
8	A	113	0	0	3	0
8	P	9	0	0	0	0
8	T	12	0	0	0	0
All	All	7110	0	6730	80	0

The all-atom clashscore is defined as the number of clashes found per 1000 atoms (including hydrogen atoms). The all-atom clashscore for this structure is 6.

All (80) close contacts within the same asymmetric unit are listed below, sorted by their clash magnitude.

Atom-1	Atom-2	Interatomic distance (Å)	Clash overlap (Å)
2:T:4:DG:H1	7:T:102:EDO:H21	1.56	0.71
1:A:484:ARG:NH2	4:A:803:SO4:O2	2.24	0.71
1:A:638:GLU:OE1	1:A:641:ARG:NH2	2.27	0.68
1:A:376:GLU:OE1	1:A:379:ARG:NH1	2.26	0.67
1:A:333:LEU:HD22	6:T:101[B]:5CY:H3	1.76	0.67
2:T:7:DG:H2''	2:T:8:DC:H5''	1.76	0.66
2:T:1:DA:H4'	6:T:101[B]:5CY:H25	1.77	0.66
1:A:625:ARG:HH21	1:A:642:ILE:HD12	1.61	0.65
1:A:428:CYS:HB2	1:A:431:TYR:CZ	2.32	0.65
1:A:157:ILE:HG13	1:A:222:ARG:HG3	1.79	0.64
1:A:738:LEU:HD11	1:A:756:ARG:HG2	1.81	0.62
1:A:363:LYS:NZ	8:A:912:HOH:O	2.33	0.61
2:T:15:DC:H2''	2:T:16:DG:H5'	1.83	0.60
1:A:407:SER:HB3	1:A:410:PRO:HG2	1.84	0.60
1:A:296:ALA:O	1:A:300:GLU:HG2	2.03	0.58
1:A:39:TYR:CZ	1:A:73:LYS:HE3	2.39	0.58
1:A:32:ARG:NH1	4:A:802:SO4:O3	2.38	0.57
1:A:685:ARG:NH2	1:A:711:GLY:O	2.37	0.57
1:A:101:ARG:NH2	1:A:108:ASP:OD1	2.37	0.56
1:A:689:ARG:NH1	1:A:719:GLU:OE2	2.34	0.56
1:A:101:ARG:HG3	1:A:109:ILE:HG12	1.88	0.55

Continued on next page...

Continued from previous page...

Atom-1	Atom-2	Interatomic distance (Å)	Clash overlap (Å)
2:T:2[B]:DA:H3'	6:T:101[B]:5CY:H27	1.89	0.54
1:A:159:MET:HE1	1:A:170:VAL:HG11	1.89	0.54
1:A:124:LYS:HB3	1:A:126:LEU:HG	1.90	0.53
1:A:267:THR:HA	6:T:101[B]:5CY:H24	1.90	0.53
1:A:159:MET:CE	1:A:309:ALA:HA	2.38	0.53
1:A:325:GLU:HB3	6:T:101[A]:5CY:H19	1.90	0.53
1:A:653:TYR:HA	1:A:727:TYR:OH	2.09	0.52
1:A:525:ILE:HG23	1:A:536:VAL:HG21	1.92	0.52
1:A:460:ARG:HB2	1:A:486:ILE:HG21	1.92	0.51
1:A:329:MET:HG3	6:T:101[B]:5CY:H2	1.93	0.51
1:A:394:ARG:NH2	1:A:590:THR:HG22	2.26	0.50
2:T:2[B]:DA:H5"	6:T:101[B]:5CY:H23	1.93	0.50
1:A:158:LEU:HD22	1:A:299:TRP:CE2	2.45	0.50
1:A:172:THR:HG21	1:A:176:ILE:HD12	1.94	0.50
1:A:198:VAL:HG11	1:A:232:LEU:HD22	1.94	0.50
1:A:58:ARG:HD3	1:A:91:GLN:HB3	1.94	0.50
1:A:496:TYR:CZ	1:A:502:ALA:HB1	2.47	0.50
1:A:499:TYR:CZ	1:A:501:LYS:HB2	2.47	0.49
1:A:301:SER:HB2	1:A:303:GLU:HG3	1.93	0.49
1:A:564:LEU:HA	1:A:567:ILE:HG22	1.94	0.49
1:A:349:THR:HG23	6:T:101[B]:5CY:H29	1.96	0.48
1:A:593:LYS:NZ	2:T:10:DG:H5'	2.29	0.47
2:T:15:DC:H2'	2:T:16:DG:C8	2.50	0.47
1:A:713:ARG:NH1	1:A:728:ASP:OD2	2.42	0.47
2:T:10:DG:H2'	2:T:11:DT:H72	1.97	0.47
1:A:704:LEU:HD11	1:A:715:ILE:HD13	1.97	0.47
1:A:509:CYS:O	1:A:513:VAL:HG23	2.14	0.46
1:A:159:MET:CE	1:A:170:VAL:HG11	2.46	0.46
1:A:557:LYS:O	1:A:561:LYS:HG2	2.15	0.46
1:A:650:LEU:HD23	1:A:733:ILE:HG13	1.98	0.46
1:A:145:LEU:HB3	1:A:156:PRO:HD2	1.98	0.45
1:A:706:GLY:O	1:A:713:ARG:HG2	2.17	0.45
1:A:589:VAL:HG21	1:A:608:LEU:HD21	1.99	0.45
1:A:545:HIS:HD2	8:A:988:HOH:O	2.00	0.44
1:A:357:LEU:HD21	1:A:493:PHE:HE1	1.82	0.44
1:A:594:TYR:CZ	1:A:606:ARG:HG3	2.52	0.44
1:A:58:ARG:O	1:A:61:THR:HG22	2.17	0.44
1:A:657:PRO:HB3	1:A:720:PHE:CD2	2.53	0.44
1:A:276:GLU:HG2	1:A:289:LYS:HB2	1.99	0.44
1:A:639:ALA:O	1:A:643:VAL:HG23	2.18	0.44
1:A:271:PRO:HA	1:A:613:ARG:HD3	1.99	0.44

Continued on next page...

Continued from previous page...

Atom-1	Atom-2	Interatomic distance (Å)	Clash overlap (Å)
1:A:103:HIS:CG	1:A:104:PRO:HD2	2.53	0.44
1:A:742:GLU:HG3	1:A:752:LYS:HG3	2.00	0.43
1:A:229:LYS:HG2	1:A:231:THR:HG23	1.99	0.43
1:A:73:LYS:NZ	8:A:923:HOH:O	2.47	0.43
1:A:159:MET:HE3	1:A:309:ALA:HA	2.00	0.43
1:A:10:GLU:OE2	1:A:32:ARG:NH2	2.52	0.42
1:A:159:MET:HE1	1:A:309:ALA:HA	2.01	0.42
1:A:44:ASP:N	1:A:44:ASP:OD1	2.52	0.42
3:P:1:DC:H2'	3:P:2:DG:C8	2.54	0.42
6:T:101[B]:5CY:H6	6:T:101[B]:5CY:H40	1.81	0.41
1:A:477:LYS:HB2	1:A:477:LYS:HE3	1.93	0.41
1:A:267:THR:HG22	1:A:268:ILE:HG13	2.01	0.41
2:T:11:DT:H2''	2:T:12:DT:H5'	2.02	0.41
1:A:16:ILE:HB	1:A:31:ASP:HB3	2.02	0.41
1:A:145:LEU:HB2	1:A:158:LEU:HD21	2.04	0.40
1:A:375:ARG:HD3	1:A:379:ARG:NH2	2.36	0.40
1:A:461:GLN:O	1:A:465[A]:ARG:HG3	2.21	0.40

There are no symmetry-related clashes.

5.3 Torsion angles ⓘ

5.3.1 Protein backbone ⓘ

In the following table, the Percentiles column shows the percent Ramachandran outliers of the chain as a percentile score with respect to all X-ray entries followed by that with respect to entries of similar resolution.

The Analysed column shows the number of residues for which the backbone conformation was analysed, and the total number of residues.

Mol	Chain	Analysed	Favoured	Allowed	Outliers	Percentiles	
1	A	762/775 (98%)	741 (97%)	20 (3%)	1 (0%)	56	68

All (1) Ramachandran outliers are listed below:

Mol	Chain	Res	Type
1	A	303	GLU

5.3.2 Protein sidechains ⓘ

In the following table, the Percentiles column shows the percent sidechain outliers of the chain as a percentile score with respect to all X-ray entries followed by that with respect to entries of similar resolution.

The Analysed column shows the number of residues for which the sidechain conformation was analysed, and the total number of residues.

Mol	Chain	Analysed	Rotameric	Outliers	Percentiles
1	A	659/666 (99%)	633 (96%)	26 (4%)	39 52

All (26) residues with a non-rotameric sidechain are listed below:

Mol	Chain	Res	Type
1	A	20	LYS
1	A	44	ASP
1	A	61	THR
1	A	62	VAL
1	A	63	VAL
1	A	69	GLU
1	A	101	ARG
1	A	108	ASP
1	A	189[A]	GLU
1	A	189[B]	GLU
1	A	215	ASP
1	A	221	LYS
1	A	244	MET
1	A	251	GLU
1	A	297	GLN
1	A	301	SER
1	A	324	ARG
1	A	375	ARG
1	A	406	ARG
1	A	407	SER
1	A	497	TYR
1	A	516	TRP
1	A	638	GLU
1	A	668	ARG
1	A	671	ARG
1	A	713	ARG

Some sidechains can be flipped to improve hydrogen bonding and reduce clashes. There are no such sidechains identified.

5.3.3 RNA ⓘ

There are no RNA molecules in this entry.

5.4 Non-standard residues in protein, DNA, RNA chains ⓘ

1 non-standard protein/DNA/RNA residue is modelled in this entry.

In the following table, the Counts columns list the number of bonds (or angles) for which Mogul statistics could be retrieved, the number of bonds (or angles) that are observed in the model and the number of bonds (or angles) that are defined in the chemical component dictionary. The Link column lists molecule types, if any, to which the group is linked. The Z score for a bond length (or angle) is the number of standard deviations the observed value is removed from the expected value. A bond length (or angle) with $|Z| > 2$ is considered an outlier worth inspection. RMSZ is the root-mean-square of all Z scores of the bond lengths (or angles).

Mol	Type	Chain	Res	Link	Bond lengths			Bond angles		
					Counts	RMSZ	# $ Z > 2$	Counts	RMSZ	# $ Z > 2$
3	DOC	P	12	3,2	11,19,20	2.53	5 (45%)	14,26,29	1.87	3 (21%)

In the following table, the Chirals column lists the number of chiral outliers, the number of chiral centers analysed, the number of these observed in the model and the number defined in the chemical component dictionary. Similar counts are reported in the Torsion and Rings columns. '-' means no outliers of that kind were identified.

Mol	Type	Chain	Res	Link	Chirals	Torsions	Rings
3	DOC	P	12	3,2	-	0/3/18/19	0/2/2/2

All (5) bond length outliers are listed below:

Mol	Chain	Res	Type	Atoms	Z	Observed(Å)	Ideal(Å)
3	P	12	DOC	C4-N3	-2.77	1.30	1.35
3	P	12	DOC	C5'-C4'	-2.37	1.44	1.50
3	P	12	DOC	C4-N4	3.02	1.44	1.35
3	P	12	DOC	C6-N1	3.67	1.41	1.35
3	P	12	DOC	C5-C4	5.41	1.53	1.40

All (3) bond angle outliers are listed below:

Mol	Chain	Res	Type	Atoms	Z	Observed(°)	Ideal(°)
3	P	12	DOC	C2'-C3'-C4'	-2.16	98.37	102.59
3	P	12	DOC	C2-N3-C4	3.39	120.40	115.61
3	P	12	DOC	O4'-C1'-N1	4.41	115.36	107.72

There are no chirality outliers.

There are no torsion outliers.

There are no ring outliers.

No monomer is involved in short contacts.

5.5 Carbohydrates [i](#)

There are no carbohydrates in this entry.

5.6 Ligand geometry [i](#)

Of 15 ligands modelled in this entry, 1 is monoatomic - leaving 14 for Mogul analysis.

In the following table, the Counts columns list the number of bonds (or angles) for which Mogul statistics could be retrieved, the number of bonds (or angles) that are observed in the model and the number of bonds (or angles) that are defined in the chemical component dictionary. The Link column lists molecule types, if any, to which the group is linked. The Z score for a bond length (or angle) is the number of standard deviations the observed value is removed from the expected value. A bond length (or angle) with $|Z| > 2$ is considered an outlier worth inspection. RMSZ is the root-mean-square of all Z scores of the bond lengths (or angles).

Mol	Type	Chain	Res	Link	Bond lengths			Bond angles		
					Counts	RMSZ	$\# Z > 2$	Counts	RMSZ	$\# Z > 2$
4	SO4	A	801	-	4,4,4	0.24	0	6,6,6	0.40	0
4	SO4	A	802	-	4,4,4	0.22	0	6,6,6	0.09	0
4	SO4	A	803	-	4,4,4	0.21	0	6,6,6	0.12	0
4	SO4	A	804	-	4,4,4	0.18	0	6,6,6	0.27	0
4	SO4	A	805	-	4,4,4	0.17	0	6,6,6	0.38	0
4	SO4	A	806	-	4,4,4	0.17	0	6,6,6	0.11	0
4	SO4	A	807	-	4,4,4	0.20	0	6,6,6	0.14	0
4	SO4	A	808	-	4,4,4	0.21	0	6,6,6	0.16	0
4	SO4	A	809	-	4,4,4	0.24	0	6,6,6	0.11	0
4	SO4	A	811	-	4,4,4	0.26	0	6,6,6	0.17	0
4	SO4	A	812	-	4,4,4	0.14	0	6,6,6	0.36	0
6	5CY	T	101[A]	2	38,38,38	0.23	0	53,55,55	0.88	3 (5%)
6	5CY	T	101[B]	2	38,38,38	0.20	0	53,55,55	1.04	4 (7%)
7	EDO	T	102	-	3,3,3	0.47	0	2,2,2	0.56	0

In the following table, the Chirals column lists the number of chiral outliers, the number of chiral centers analysed, the number of these observed in the model and the number defined in the chemical component dictionary. Similar counts are reported in the Torsion and Rings columns. '-' means no outliers of that kind were identified.

Mol	Type	Chain	Res	Link	Chirals	Torsions	Rings
4	SO4	A	801	-	-	0/0/0/0	0/0/0/0
4	SO4	A	802	-	-	0/0/0/0	0/0/0/0
4	SO4	A	803	-	-	0/0/0/0	0/0/0/0
4	SO4	A	804	-	-	0/0/0/0	0/0/0/0
4	SO4	A	805	-	-	0/0/0/0	0/0/0/0
4	SO4	A	806	-	-	0/0/0/0	0/0/0/0
4	SO4	A	807	-	-	0/0/0/0	0/0/0/0
4	SO4	A	808	-	-	0/0/0/0	0/0/0/0
4	SO4	A	809	-	-	0/0/0/0	0/0/0/0
4	SO4	A	811	-	-	0/0/0/0	0/0/0/0
4	SO4	A	812	-	-	0/0/0/0	0/0/0/0
6	5CY	T	101[A]	2	-	0/16/56/56	0/4/4/4
6	5CY	T	101[B]	2	-	0/16/56/56	0/4/4/4
7	EDO	T	102	-	-	0/1/1/1	0/0/0/0

There are no bond length outliers.

All (7) bond angle outliers are listed below:

Mol	Chain	Res	Type	Atoms	Z	Observed(°)	Ideal(°)
6	T	101[A]	5CY	C11-N1-C10	-2.71	122.77	126.08
6	T	101[B]	5CY	C11-N1-C10	-2.11	123.51	126.08
6	T	101[A]	5CY	C23-C24-C25	-2.06	109.03	113.37
6	T	101[B]	5CY	C6-C7-C8	2.33	130.32	124.94
6	T	101[B]	5CY	C8-C9-C10	2.38	130.18	126.04
6	T	101[A]	5CY	C6-C5-C4	3.23	131.49	125.14
6	T	101[B]	5CY	C6-C5-C4	5.09	135.14	125.14

There are no chirality outliers.

There are no torsion outliers.

There are no ring outliers.

5 monomers are involved in 12 short contacts:

Mol	Chain	Res	Type	Clashes	Symm-Clashes
4	A	802	SO4	1	0
4	A	803	SO4	1	0
6	T	101[A]	5CY	1	0
6	T	101[B]	5CY	8	0
7	T	102	EDO	1	0

5.7 Other polymers

There are no such residues in this entry.

5.8 Polymer linkage issues

There are no chain breaks in this entry.

6 Fit of model and data [i](#)

6.1 Protein, DNA and RNA chains [i](#)

In the following table, the column labelled ‘#RSRZ> 2’ contains the number (and percentage) of RSRZ outliers, followed by percent RSRZ outliers for the chain as percentile scores relative to all X-ray entries and entries of similar resolution. The OWAB column contains the minimum, median, 95th percentile and maximum values of the occupancy-weighted average B-factor per residue. The column labelled ‘Q< 0.9’ lists the number of (and percentage) of residues with an average occupancy less than 0.9.

Mol	Chain	Analysed	<RSRZ>	#RSRZ>2	OWAB(Å ²)	Q<0.9
1	A	759/775 (97%)	0.12	17 (2%) 65 72	30, 57, 97, 153	0
2	T	16/16 (100%)	-0.31	0 100 100	44, 55, 105, 119	0
3	P	11/12 (91%)	-0.40	0 100 100	53, 72, 126, 134	0
All	All	786/803 (97%)	0.10	17 (2%) 65 72	30, 57, 100, 153	0

All (17) RSRZ outliers are listed below:

Mol	Chain	Res	Type	RSRZ
1	A	247	ARG	4.1
1	A	657	PRO	3.6
1	A	655	VAL	3.5
1	A	704	LEU	3.3
1	A	246	ASP	3.1
1	A	445	PHE	2.8
1	A	755	LEU	2.7
1	A	642	ILE	2.7
1	A	658	GLU	2.5
1	A	640	VAL	2.5
1	A	629	ALA	2.4
1	A	637	GLU	2.3
1	A	671	ARG	2.2
1	A	533	GLY	2.2
1	A	722	PRO	2.2
1	A	646	VAL	2.0
1	A	650	LEU	2.0

6.2 Non-standard residues in protein, DNA, RNA chains [i](#)

In the following table, the Atoms column lists the number of modelled atoms in the group and the number defined in the chemical component dictionary. LLDF column lists the quality of electron

density of the group with respect to its neighbouring residues in protein, DNA or RNA chains. The B-factors column lists the minimum, median, 95th percentile and maximum values of B factors of atoms in the group. The column labelled 'Q< 0.9' lists the number of atoms with occupancy less than 0.9.

Mol	Type	Chain	Res	Atoms	RSCC	RSR	LLDF	B-factors(Å ²)	Q<0.9
3	DOC	P	12	18/19	0.97	0.17	-	31,41,52,54	0

6.3 Carbohydrates [i](#)

There are no carbohydrates in this entry.

6.4 Ligands [i](#)

In the following table, the Atoms column lists the number of modelled atoms in the group and the number defined in the chemical component dictionary. LLDF column lists the quality of electron density of the group with respect to its neighbouring residues in protein, DNA or RNA chains. The B-factors column lists the minimum, median, 95th percentile and maximum values of B factors of atoms in the group. The column labelled 'Q< 0.9' lists the number of atoms with occupancy less than 0.9.

Mol	Type	Chain	Res	Atoms	RSCC	RSR	LLDF	B-factors(Å ²)	Q<0.9
4	SO4	A	812	5/5	0.94	0.21	4.09	39,42,46,50	5
6	5CY	T	101[A]	35/35	0.88	0.27	2.13	42,49,60,64	35
6	5CY	T	101[B]	35/35	0.88	0.27	2.03	29,41,50,55	35
4	SO4	A	801	5/5	0.86	0.22	1.66	73,76,79,85	5
4	SO4	A	808	5/5	0.95	0.17	0.72	89,90,91,92	5
4	SO4	A	811	5/5	0.97	0.15	-0.56	84,85,88,88	0
4	SO4	A	809	5/5	0.96	0.11	-0.64	95,96,97,99	0
4	SO4	A	805	5/5	0.95	0.10	-	63,67,69,69	5
4	SO4	A	802	5/5	0.85	0.23	-	143,143,143,144	0
4	SO4	A	804	5/5	0.95	0.14	-	76,77,79,84	5
5	CL	A	810	1/1	0.88	0.19	-	79,79,79,79	0
4	SO4	A	803	5/5	0.92	0.20	-	67,69,71,73	5
4	SO4	A	807	5/5	0.89	0.19	-	64,65,67,68	5
7	EDO	T	102	4/4	0.88	0.17	-	59,60,65,67	0
4	SO4	A	806	5/5	0.94	0.12	-	83,84,87,89	5

6.5 Other polymers [i](#)

There are no such residues in this entry.