



Full wwPDB X-ray Structure Validation Report ⓘ

Feb 1, 2016 – 09:59 AM GMT

PDB ID : 3KCU
Title : Structure of formate channel
Authors : Wang, Y.; Huang, Y.; Wang, J.; Yan, N.; Shi, Y.
Deposited on : 2009-10-22
Resolution : 2.24 Å(reported)

This is a Full wwPDB X-ray Structure Validation Report for a publicly released PDB entry.
We welcome your comments at validation@mail.wwpdb.org
A user guide is available at
<http://wwpdb.org/validation/2016/XrayValidationReportHelp>
with specific help available everywhere you see the ⓘ symbol.

The following versions of software and data (see [references ⓘ](#)) were used in the production of this report:

MolProbity : 4.02b-467
Mogul : 1.7 (RC4), CSD as536be (2015)
Xtriage (Phenix) : 1.9-1692
EDS : rb-20026688
Percentile statistics : 20151230.v01 (using entries in the PDB archive December 30th 2015)
Refmac : 5.8.0135
CCP4 : 6.5.0
Ideal geometry (proteins) : Engh & Huber (2001)
Ideal geometry (DNA, RNA) : Parkinson et al. (1996)
Validation Pipeline (wwPDB-VP) : trunk26865

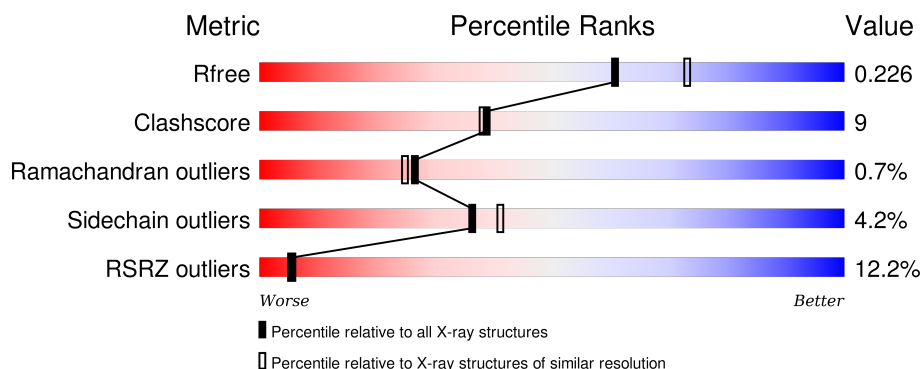
1 Overall quality at a glance

The following experimental techniques were used to determine the structure:

X-RAY DIFFRACTION

The reported resolution of this entry is 2.24 Å.

Percentile scores (ranging between 0-100) for global validation metrics of the entry are shown in the following graphic. The table shows the number of entries on which the scores are based.



Metric	Whole archive (#Entries)	Similar resolution (#Entries, resolution range(Å))
R_{free}	91344	1611 (2.26-2.22)
Clashscore	102246	1764 (2.26-2.22)
Ramachandran outliers	100387	1724 (2.26-2.22)
Sidechain outliers	100360	1724 (2.26-2.22)
RSRZ outliers	91569	1616 (2.26-2.22)

The table below summarises the geometric issues observed across the polymeric chains and their fit to the electron density. The red, orange, yellow and green segments on the lower bar indicate the fraction of residues that contain outliers for ≥ 3 , 2, 1 and 0 types of geometric quality criteria. A grey segment represents the fraction of residues that are not modelled. The numeric value for each fraction is indicated below the corresponding segment, with a dot representing fractions $\leq 5\%$. The upper red bar (where present) indicates the fraction of residues that have poor fit to the electron density. The numeric value is given above the bar.

Mol	Chain	Length	Quality of chain
1	A	285	<div> <div>5%</div> <div>77% 9% • 12%</div> </div>
1	B	285	<div> <div>7%</div> <div>76% 12% 12%</div> </div>
1	C	285	<div> <div>7%</div> <div>71% 11% • 16%</div> </div>
1	D	285	<div> <div>20%</div> <div>65% 20% • 13%</div> </div>
1	E	285	<div> <div>14%</div> <div>70% 16% • 13%</div> </div>

The following table lists non-polymeric compounds, carbohydrate monomers and non-standard residues in protein, DNA, RNA chains that are outliers for geometric or electron-density-fit criteria:

Mol	Type	Chain	Res	Chirality	Geometry	Clashes	Electron density
2	MA5	A	286	-	-	-	X

2 Entry composition [i](#)

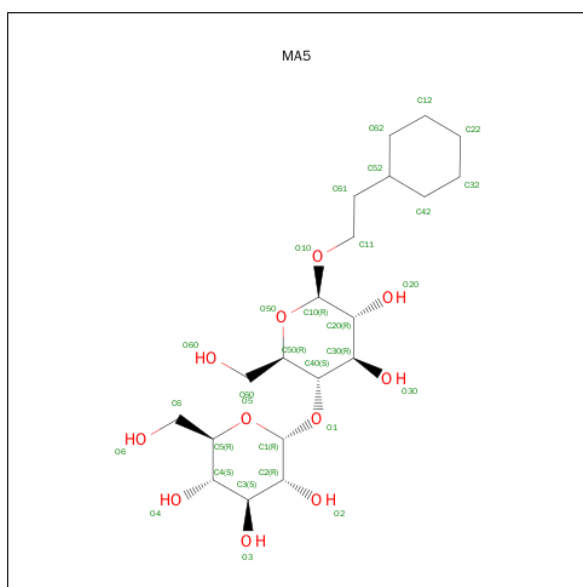
There are 3 unique types of molecules in this entry. The entry contains 9630 atoms, of which 0 are hydrogens and 0 are deuteriums.

In the tables below, the ZeroOcc column contains the number of atoms modelled with zero occupancy, the AltConf column contains the number of residues with at least one atom in alternate conformation and the Trace column contains the number of residues modelled with at most 2 atoms.

- Molecule 1 is a protein called Probable formate transporter 1.

Mol	Chain	Residues	Atoms					ZeroOcc	AltConf	Trace
1	A	252	Total	C	N	O	S	0	2	0
			1947	1298	305	326	18			
1	B	252	Total	C	N	O	S	0	0	0
			1927	1281	304	324	18			
1	C	239	Total	C	N	O	S	0	1	0
			1825	1217	283	307	18			
1	D	248	Total	C	N	O	S	0	0	0
			1888	1254	297	319	18			
1	E	249	Total	C	N	O	S	0	1	0
			1908	1271	297	322	18			

- Molecule 2 is 2-(6-(2-CYCLOHEXYLETHOXY)-TETRAHYDRO-4,5-DIHYDROXY-2(HYDROXYMETHYL)-2H-PYRAN-3-YLOXY)-TETRAHYDRO-6(HYDROXYMETHYL)-2H-PYRAN-3,4,5-TRIOL (three-letter code: MA5) (formula: C₂₀H₃₆O₁₁).



Mol	Chain	Residues	Atoms			ZeroOcc	AltConf
2	A	1	Total	C	O	0	0
			31	20	11		

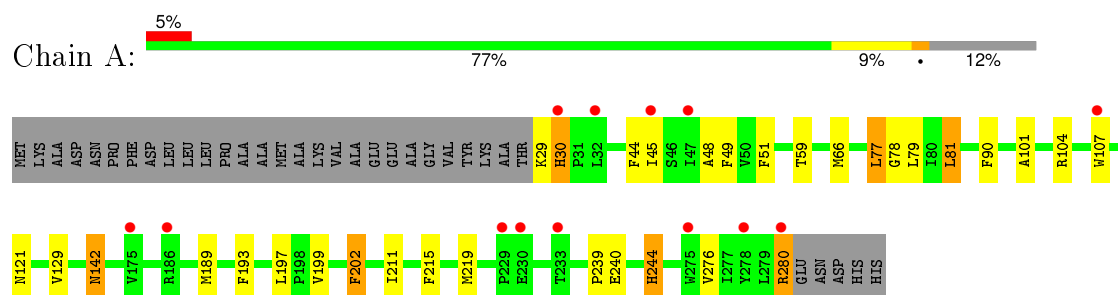
- Molecule 3 is water.

Mol	Chain	Residues	Atoms			ZeroOcc	AltConf
3	A	37	Total	O		0	0
			37	37			
3	B	27	Total	O		0	0
			27	27			
3	C	22	Total	O		0	0
			22	22			
3	D	6	Total	O		0	0
			6	6			
3	E	12	Total	O		0	0
			12	12			

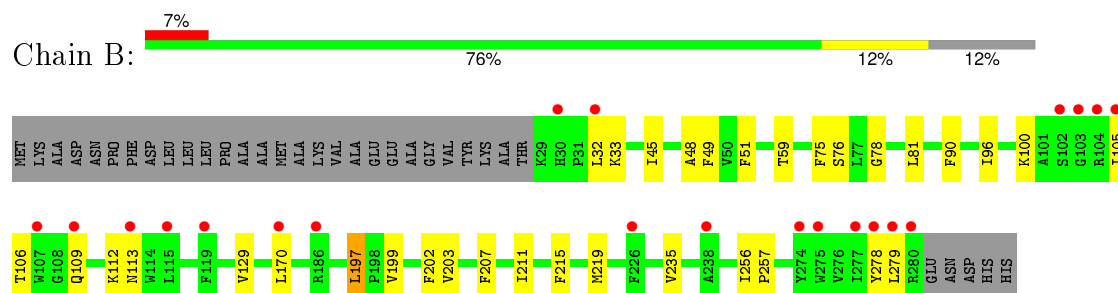
3 Residue-property plots [i](#)

These plots are drawn for all protein, RNA and DNA chains in the entry. The first graphic for a chain summarises the proportions of errors displayed in the second graphic. The second graphic shows the sequence view annotated by issues in geometry and electron density. Residues are color-coded according to the number of geometric quality criteria for which they contain at least one outlier: green = 0, yellow = 1, orange = 2 and red = 3 or more. A red dot above a residue indicates a poor fit to the electron density ($RSRZ > 2$). Stretches of 2 or more consecutive residues without any outlier are shown as a green connector. Residues present in the sample, but not in the model, are shown in grey.

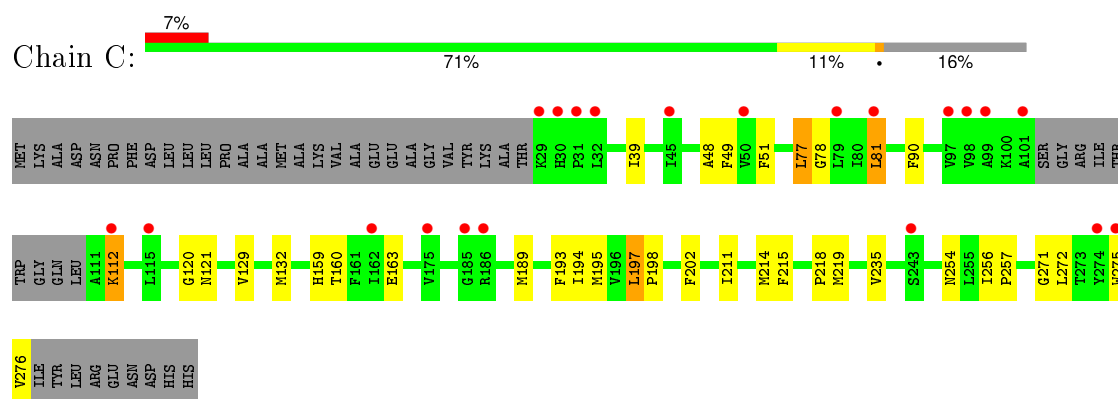
• Molecule 1: Probable formate transporter 1



• Molecule 1: Probable formate transporter 1

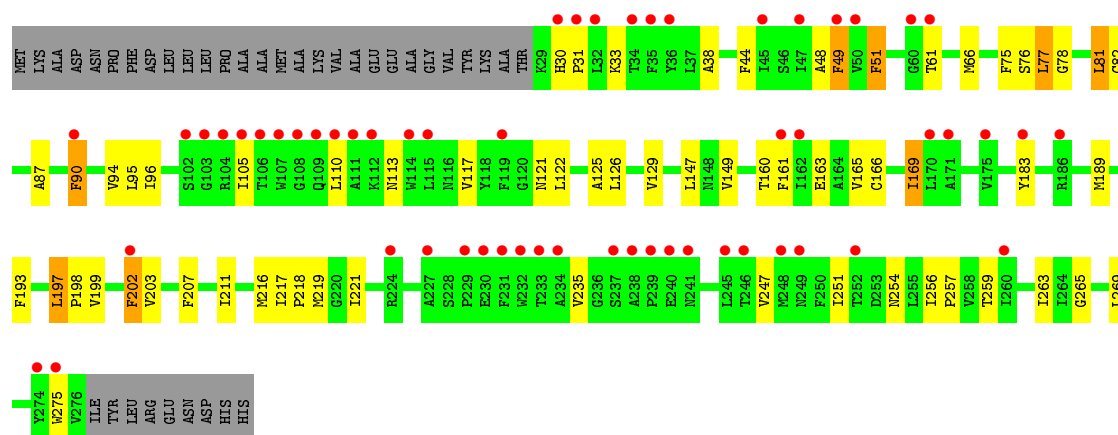


• Molecule 1: Probable formate transporter 1

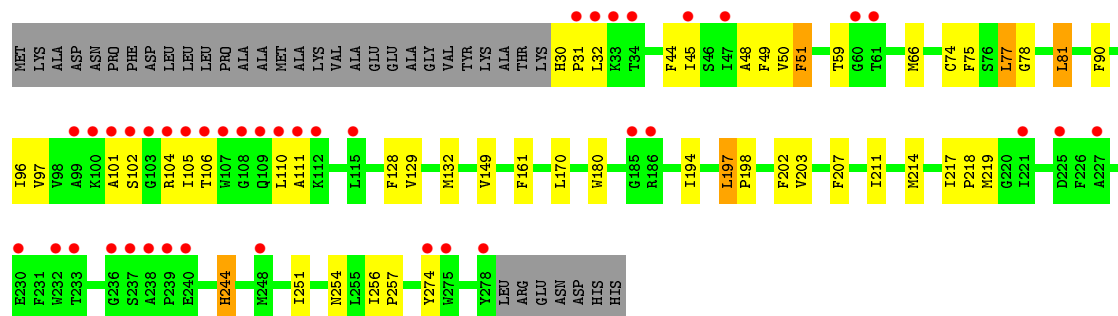


• Molecule 1: Probable formate transporter 1





• Molecule 1: Probable formate transporter 1



4 Data and refinement statistics

Property	Value	Source
Space group	P 21 21 21	Depositor
Cell constants a, b, c, α , β , γ	101.38Å 107.93Å 163.13Å 90.00° 90.00° 90.00°	Depositor
Resolution (Å)	39.99 – 2.24 39.99 – 2.24	Depositor EDS
% Data completeness (in resolution range)	98.8 (39.99-2.24) 98.8 (39.99-2.24)	Depositor EDS
R_{merge}	0.06	Depositor
R_{sym}	(Not available)	Depositor
$\langle I/\sigma(I) \rangle$ ¹	1.75 (at 2.24Å)	Xtriage
Refinement program	PHENIX (phenix.refine: 1.5_2)	Depositor
R, R_{free}	0.203 , 0.232 0.197 , 0.226	Depositor DCC
R_{free} test set	4378 reflections (5.42%)	DCC
Wilson B-factor (Å ²)	50.5	Xtriage
Anisotropy	0.472	Xtriage
Bulk solvent k_{sol} (e/Å ³), B_{sol} (Å ²)	0.36 , 70.5	EDS
Estimated twinning fraction	No twinning to report.	Xtriage
L-test for twinning ²	$\langle L \rangle = 0.50$, $\langle L^2 \rangle = 0.34$	Xtriage
Outliers	0 of 85169 reflections	Xtriage
F_o, F_c correlation	0.96	EDS
Total number of atoms	9630	wwPDB-VP
Average B, all atoms (Å ²)	72.0	wwPDB-VP

Xtriage's analysis on translational NCS is as follows: *The largest off-origin peak in the Patterson function is 3.82% of the height of the origin peak. No significant pseudotranslation is detected.*

¹Intensities estimated from amplitudes.

²Theoretical values of $\langle |L| \rangle$, $\langle L^2 \rangle$ for acentric reflections are 0.5, 0.375 respectively for untwinned datasets, and 0.333, 0.2 for perfectly twinned datasets.

5 Model quality [i](#)

5.1 Standard geometry [i](#)

Bond lengths and bond angles in the following residue types are not validated in this section: MA5

The Z score for a bond length (or angle) is the number of standard deviations the observed value is removed from the expected value. A bond length (or angle) with $|Z| > 5$ is considered an outlier worth inspection. RMSZ is the root-mean-square of all Z scores of the bond lengths (or angles).

Mol	Chain	Bond lengths		Bond angles	
		RMSZ	$\# Z > 5$	RMSZ	$\# Z > 5$
1	A	0.49	0/2003	0.54	0/2729
1	B	0.47	0/1978	0.51	0/2695
1	C	0.43	0/1876	0.52	0/2555
1	D	0.30	0/1938	0.45	0/2641
1	E	0.33	0/1963	0.47	0/2677
All	All	0.41	0/9758	0.50	0/13297

There are no bond length outliers.

There are no bond angle outliers.

There are no chirality outliers.

There are no planarity outliers.

5.2 Too-close contacts [i](#)

In the following table, the Non-H and H(model) columns list the number of non-hydrogen atoms and hydrogen atoms in the chain respectively. The H(added) column lists the number of hydrogen atoms added and optimized by MolProbity. The Clashes column lists the number of clashes within the asymmetric unit, whereas Symm-Clashes lists symmetry related clashes.

Mol	Chain	Non-H	H(model)	H(added)	Clashes	Symm-Clashes
1	A	1947	0	1989	36	0
1	B	1927	0	1972	34	0
1	C	1825	0	1865	30	0
1	D	1888	0	1928	49	0
1	E	1908	0	1944	35	0
2	A	31	0	36	0	0
3	A	37	0	0	1	0
3	B	27	0	0	0	0

Continued on next page...

Continued from previous page...

Mol	Chain	Non-H	H(model)	H(added)	Clashes	Symm-Clashes
3	C	22	0	0	0	0
3	D	6	0	0	0	0
3	E	12	0	0	1	0
All	All	9630	0	9734	173	0

The all-atom clashscore is defined as the number of clashes found per 1000 atoms (including hydrogen atoms). The all-atom clashscore for this structure is 9.

All (173) close contacts within the same asymmetric unit are listed below, sorted by their clash magnitude.

Atom-1	Atom-2	Interatomic distance (Å)	Clash overlap (Å)
1:A:129:VAL:HA	1:A:219:MET:HE1	1.33	1.09
1:C:129:VAL:HA	1:C:219:MET:HE1	1.40	1.04
1:B:129:VAL:HA	1:B:219:MET:CE	1.98	0.93
1:B:129:VAL:HA	1:B:219:MET:HE1	1.51	0.91
1:E:50:VAL:HG21	1:E:132:MET:HE3	1.55	0.89
1:C:129:VAL:HA	1:C:219:MET:CE	2.04	0.88
1:A:129:VAL:HA	1:A:219:MET:CE	2.03	0.88
1:A:129:VAL:HG22	1:A:219:MET:HE2	1.54	0.87
1:A:77:LEU:HD22	1:A:81:LEU:HD22	1.58	0.83
1:D:77:LEU:HD22	1:D:81:LEU:HD22	1.58	0.83
1:C:276:VAL:HG13	1:D:33:LYS:HE3	1.62	0.81
1:A:215:PHE:CE1	1:A:219:MET:HE3	2.16	0.79
1:B:129:VAL:HG22	1:B:219:MET:HE2	1.65	0.78
1:E:77:LEU:HD22	1:E:81:LEU:HD22	1.63	0.78
1:C:189:MET:HE1	1:C:193:PHE:HE2	1.53	0.74
1:C:215:PHE:CE1	1:C:219:MET:CE	2.71	0.74
1:A:215:PHE:CZ	1:A:219:MET:HE3	2.22	0.73
1:B:215:PHE:CE1	1:B:219:MET:HE3	2.26	0.71
1:D:165:VAL:O	1:D:169:ILE:HG22	1.91	0.70
1:C:215:PHE:CE1	1:C:219:MET:HE2	2.26	0.70
1:A:129:VAL:HG22	1:A:219:MET:CE	2.22	0.69
1:A:215:PHE:CE1	1:A:219:MET:CE	2.75	0.69
1:D:90:PHE:HB3	1:D:211:ILE:HD11	1.74	0.69
1:B:129:VAL:HA	1:B:219:MET:HE2	1.74	0.68
1:D:90:PHE:CB	1:D:211:ILE:HD11	2.23	0.68
1:E:30:HIS:HB2	1:E:31:PRO:HD3	1.75	0.68
1:A:29:LYS:HG2	1:A:30:HIS:N	2.08	0.68
1:A:280:ARG:H	1:A:280:ARG:HD2	1.60	0.67
1:B:106:THR:OG1	1:B:109:GLN:HG2	1.94	0.66
1:B:215:PHE:CE1	1:B:219:MET:CE	2.78	0.66

Continued on next page...

Continued from previous page...

Atom-1	Atom-2	Interatomic distance (Å)	Clash overlap (Å)
1:C:189:MET:CE	1:C:193:PHE:HE2	2.09	0.65
1:D:161:PHE:CE1	1:D:257:PRO:HG3	2.31	0.65
1:C:215:PHE:CZ	1:C:219:MET:HE3	2.32	0.63
1:D:160:THR:HB	1:D:163:GLU:HG2	1.80	0.63
1:B:215:PHE:CZ	1:B:219:MET:HE3	2.34	0.63
1:D:161:PHE:CD1	1:D:257:PRO:HG3	2.34	0.62
1:D:105:ILE:HD13	1:D:110:LEU:HG	1.82	0.62
1:A:280:ARG:CD	1:A:280:ARG:H	2.13	0.62
1:C:271:GLY:O	1:C:275:TRP:HD1	1.82	0.61
1:A:129:VAL:CG2	1:A:219:MET:HE2	2.27	0.61
1:C:160:THR:OG1	1:C:163:GLU:HG2	2.01	0.61
1:B:256:ILE:HB	1:B:257:PRO:HD3	1.83	0.60
1:B:129:VAL:HG22	1:B:219:MET:CE	2.31	0.60
1:A:276:VAL:HG13	1:B:33:LYS:HE3	1.82	0.60
1:C:129:VAL:CA	1:C:219:MET:HE1	2.25	0.60
1:D:254:ASN:O	1:D:257:PRO:HD2	2.03	0.59
1:D:189:MET:HE1	1:D:193:PHE:HE2	1.68	0.59
1:C:159:HIS:HB3	1:C:163:GLU:HG3	1.83	0.59
1:D:207:PHE:HZ	1:E:132:MET:HE1	1.68	0.58
1:D:259:THR:O	1:D:263:ILE:HG13	2.03	0.58
1:D:169:ILE:HG13	1:D:265:GLY:HA2	1.86	0.58
1:B:45:ILE:HG21	1:B:211:ILE:HG22	1.86	0.58
1:D:149:VAL:HG11	1:D:219:MET:HG3	1.85	0.58
1:A:280:ARG:N	1:A:280:ARG:HD2	2.18	0.57
1:D:207:PHE:CZ	1:E:132:MET:HE1	2.39	0.57
1:E:254:ASN:O	1:E:257:PRO:HD2	2.03	0.57
1:B:48:ALA:HB2	1:B:78:GLY:HA3	1.86	0.57
1:B:129:VAL:CG2	1:B:219:MET:HE2	2.33	0.57
1:C:215:PHE:CZ	1:C:219:MET:CE	2.88	0.56
1:C:215:PHE:CE1	1:C:219:MET:HE3	2.39	0.56
1:C:77:LEU:HD22	1:C:81:LEU:HD22	1.88	0.55
1:D:90:PHE:HB3	1:D:211:ILE:CD1	2.37	0.55
1:B:96:ILE:N	1:B:96:ILE:HD12	2.22	0.55
1:A:239:PRO:HD2	1:A:240:GLU:OE1	2.07	0.55
1:A:66:MET:HE1	1:B:59:THR:HG21	1.88	0.55
1:C:256:ILE:HB	1:C:257:PRO:HD3	1.89	0.54
1:A:129:VAL:HG13	1:A:219:MET:HE2	1.89	0.54
1:E:129:VAL:HA	1:E:219:MET:HE1	1.90	0.54
1:A:79:LEU:HD12	1:A:199:VAL:CG2	2.38	0.54
1:D:95:LEU:HD21	1:D:269:LEU:HB3	1.89	0.54
1:D:66:MET:CE	1:E:59:THR:HG21	2.38	0.54

Continued on next page...

Continued from previous page...

Atom-1	Atom-2	Interatomic distance (Å)	Clash overlap (Å)
1:C:132:MET:HB2	1:C:219:MET:CE	2.38	0.53
1:B:129:VAL:HG13	1:B:219:MET:HE2	1.91	0.53
1:E:170:LEU:HB3	1:E:207:PHE:CD2	2.44	0.53
1:A:29:LYS:HG2	1:A:30:HIS:H	1.72	0.53
1:E:149:VAL:HG11	1:E:219:MET:HG3	1.91	0.53
1:B:129:VAL:CB	1:B:219:MET:HE2	2.39	0.53
1:E:45:ILE:HG21	1:E:211:ILE:HG22	1.90	0.53
1:A:45:ILE:HG21	1:A:211:ILE:HG22	1.90	0.52
1:D:77:LEU:CD2	1:D:81:LEU:HD22	2.33	0.52
1:E:48:ALA:HB2	1:E:78:GLY:HA3	1.91	0.52
1:C:48:ALA:HB2	1:C:78:GLY:HA3	1.92	0.52
1:B:129:VAL:CA	1:B:219:MET:HE2	2.40	0.52
1:C:189:MET:HE1	1:C:193:PHE:CE2	2.41	0.52
1:D:96:ILE:HG12	1:D:183:TYR:CD1	2.44	0.52
1:B:278:TYR:O	1:B:279:LEU:HD12	2.09	0.52
1:A:44:PHE:CD2	1:A:81:LEU:HB3	2.44	0.52
1:D:49:PHE:CD1	1:D:216:MET:HE3	2.45	0.52
1:E:214:MET:O	1:E:218:PRO:HG2	2.09	0.51
1:B:76:SER:HA	1:B:199:VAL:HG11	1.91	0.51
1:A:48:ALA:HB2	1:A:78:GLY:HA3	1.92	0.51
1:C:197:LEU:HB3	1:D:77:LEU:HG	1.93	0.51
1:E:244:HIS:HB2	3:E:287:HOH:O	2.11	0.51
1:D:90:PHE:HB2	1:D:211:ILE:HD11	1.92	0.50
1:D:256:ILE:HB	1:D:257:PRO:HD3	1.92	0.50
1:A:59:THR:HG21	1:E:66:MET:HE2	1.93	0.50
1:B:215:PHE:CE1	1:B:219:MET:HE1	2.47	0.49
1:E:217:ILE:HB	1:E:218:PRO:HD3	1.94	0.49
1:A:244:HIS:HB2	3:A:292:HOH:O	2.11	0.49
1:E:129:VAL:HA	1:E:219:MET:CE	2.41	0.49
1:D:147:LEU:HD13	1:D:235:VAL:HG11	1.94	0.49
1:D:51:PHE:CD2	1:D:77:LEU:HD12	2.48	0.49
1:D:125:ALA:O	1:D:129:VAL:HG23	2.13	0.49
1:D:161:PHE:O	1:D:165:VAL:HG23	2.14	0.48
1:C:254:ASN:O	1:C:257:PRO:HD2	2.14	0.48
1:D:189:MET:CE	1:D:193:PHE:HE2	2.25	0.48
1:C:195:MET:C	1:C:198:PRO:HD2	2.34	0.47
1:D:247:VAL:O	1:D:251:ILE:HG12	2.15	0.47
1:C:189:MET:CE	1:C:193:PHE:CE2	2.96	0.47
1:D:30:HIS:CD2	1:D:31:PRO:HD2	2.50	0.47
1:D:197:LEU:N	1:D:198:PRO:HD2	2.29	0.47
1:A:215:PHE:CE1	1:A:219:MET:HE1	2.51	0.46

Continued on next page...

Continued from previous page...

Atom-1	Atom-2	Interatomic distance (Å)	Clash overlap (Å)
1:D:96:ILE:H	1:D:96:ILE:HD12	1.79	0.46
1:E:51:PHE:CG	1:E:74:CYS:HB3	2.51	0.46
1:B:197:LEU:HB3	1:C:77:LEU:HG	1.97	0.46
1:C:214:MET:O	1:C:218:PRO:HG2	2.16	0.46
1:D:76:SER:HA	1:D:199:VAL:HG11	1.98	0.45
1:A:202:PHE:CD1	1:A:202:PHE:C	2.90	0.45
1:B:96:ILE:HD12	1:B:96:ILE:H	1.80	0.45
1:B:105:ILE:HG12	1:B:109:GLN:HB2	1.97	0.45
1:B:75:PHE:CD2	1:B:203:VAL:HG21	2.52	0.45
1:C:39:ILE:HA	1:C:120:GLY:O	2.17	0.45
1:D:217:ILE:HB	1:D:218:PRO:HD3	1.99	0.45
1:E:96:ILE:HD12	1:E:180:TRP:HE3	1.81	0.45
1:A:129:VAL:CB	1:A:219:MET:HE2	2.46	0.45
1:D:166:CYS:O	1:D:169:ILE:HG23	2.16	0.45
1:E:75:PHE:CD2	1:E:203:VAL:HG21	2.52	0.44
1:E:251:ILE:O	1:E:256:ILE:HD13	2.17	0.44
1:D:217:ILE:O	1:D:221:ILE:HG13	2.18	0.44
1:B:112:LYS:HG2	1:B:113:ASN:N	2.33	0.44
1:E:128:PHE:CE2	1:E:132:MET:HE2	2.53	0.43
1:D:202:PHE:C	1:D:202:PHE:CD1	2.91	0.43
1:A:79:LEU:HD23	1:A:79:LEU:HA	1.94	0.43
1:A:121:ASN:HB3	1:A:211:ILE:HG23	2.00	0.43
1:E:32:LEU:HA	1:E:32:LEU:HD13	1.85	0.43
1:E:219:MET:HB2	1:E:219:MET:HE2	1.92	0.43
1:E:161:PHE:CD1	1:E:257:PRO:HG3	2.54	0.43
1:E:105:ILE:HG12	1:E:106:THR:N	2.34	0.43
1:B:32:LEU:HA	1:B:32:LEU:HD12	1.90	0.42
1:A:79:LEU:HD12	1:A:199:VAL:HG21	2.01	0.42
1:D:122:LEU:O	1:D:126:LEU:HG	2.19	0.42
1:E:44:PHE:CD2	1:E:81:LEU:HB3	2.55	0.42
1:A:66:MET:CE	1:B:59:THR:HG21	2.50	0.42
1:C:112:LYS:H	1:C:112:LYS:HG2	1.59	0.42
1:E:101:ALA:O	1:E:102:SER:HB2	2.20	0.42
1:D:48:ALA:HB2	1:D:78:GLY:HA3	2.01	0.42
1:C:194:ILE:HD12	1:C:194:ILE:HA	1.90	0.42
1:E:51:PHE:CD2	1:E:74:CYS:HB3	2.55	0.41
1:E:197:LEU:N	1:E:198:PRO:HD2	2.35	0.41
1:B:215:PHE:CZ	1:B:219:MET:CE	3.01	0.41
1:B:96:ILE:HG22	1:B:100:LYS:HD2	2.01	0.41
1:A:66:MET:CE	1:B:59:THR:CG2	2.98	0.41
1:A:142:ASN:HD22	1:A:142:ASN:HA	1.66	0.41

Continued on next page...

Continued from previous page...

Atom-1	Atom-2	Interatomic distance (Å)	Clash overlap (Å)
1:E:256:ILE:HB	1:E:257:PRO:HD3	2.02	0.41
1:A:189:MET:SD	1:A:193:PHE:CE2	3.13	0.41
1:A:101:ALA:O	1:A:104:ARG:HB2	2.20	0.41
1:D:166:CYS:HA	1:D:169:ILE:CG2	2.51	0.41
1:E:102:SER:HB2	1:E:104:ARG:NE	2.36	0.41
1:D:113:ASN:O	1:D:117:VAL:HG23	2.21	0.41
1:D:82:CYS:HA	1:D:87:ALA:HB3	2.03	0.41
1:B:170:LEU:HB3	1:B:207:PHE:CD2	2.55	0.41
1:B:129:VAL:CG1	1:B:219:MET:HE2	2.51	0.40
1:D:96:ILE:HD12	1:D:96:ILE:N	2.35	0.40
1:A:129:VAL:CG1	1:A:219:MET:HE2	2.51	0.40
1:E:30:HIS:CB	1:E:31:PRO:HD3	2.49	0.40
1:D:38:ALA:O	1:D:121:ASN:ND2	2.50	0.40
1:C:121:ASN:HB3	1:C:211:ILE:HG23	2.04	0.40
1:D:75:PHE:CG	1:D:203:VAL:HG21	2.56	0.40
1:D:95:LEU:HD11	1:D:269:LEU:HD13	2.02	0.40
1:E:97:VAL:HG11	1:E:110:LEU:HD21	2.02	0.40
1:E:194:ILE:HD12	1:E:194:ILE:HA	1.93	0.40
1:C:197:LEU:N	1:C:198:PRO:CD	2.84	0.40
1:D:44:PHE:CD2	1:D:81:LEU:HB3	2.56	0.40

There are no symmetry-related clashes.

5.3 Torsion angles [i](#)

5.3.1 Protein backbone [i](#)

In the following table, the Percentiles column shows the percent Ramachandran outliers of the chain as a percentile score with respect to all X-ray entries followed by that with respect to entries of similar resolution.

The Analysed column shows the number of residues for which the backbone conformation was analysed, and the total number of residues.

Mol	Chain	Analysed	Favoured	Allowed	Outliers	Percentiles	
1	A	252/285 (88%)	246 (98%)	4 (2%)	2 (1%)	24	20
1	B	250/285 (88%)	242 (97%)	7 (3%)	1 (0%)	39	42
1	C	236/285 (83%)	231 (98%)	4 (2%)	1 (0%)	39	42
1	D	246/285 (86%)	233 (95%)	11 (4%)	2 (1%)	24	20

Continued on next page...

Continued from previous page...

Mol	Chain	Analysed	Favoured	Allowed	Outliers	Percentiles	
1	E	248/285 (87%)	235 (95%)	11 (4%)	2 (1%)	24	20
All	All	1232/1425 (86%)	1187 (96%)	37 (3%)	8 (1%)	26	29

All (8) Ramachandran outliers are listed below:

Mol	Chain	Res	Type
1	D	90	PHE
1	E	111	ALA
1	A	30	HIS
1	D	275	TRP
1	E	90	PHE
1	B	90	PHE
1	C	90	PHE
1	A	90	PHE

5.3.2 Protein sidechains ⓘ

In the following table, the Percentiles column shows the percent sidechain outliers of the chain as a percentile score with respect to all X-ray entries followed by that with respect to entries of similar resolution.

The Analysed column shows the number of residues for which the sidechain conformation was analysed, and the total number of residues.

Mol	Chain	Analysed	Rotameric	Outliers	Percentiles	
1	A	207/230 (90%)	197 (95%)	10 (5%)	31	33
1	B	205/230 (89%)	199 (97%)	6 (3%)	50	59
1	C	195/230 (85%)	186 (95%)	9 (5%)	33	36
1	D	201/230 (87%)	192 (96%)	9 (4%)	34	37
1	E	203/230 (88%)	195 (96%)	8 (4%)	39	45
All	All	1011/1150 (88%)	969 (96%)	42 (4%)	36	41

All (42) residues with a non-rotameric sidechain are listed below:

Mol	Chain	Res	Type
1	A	49	PHE
1	A	51	PHE
1	A	77	LEU
1	A	81	LEU

Continued on next page...

Continued from previous page...

Mol	Chain	Res	Type
1	A	107	TRP
1	A	142	ASN
1	A	197	LEU
1	A	202	PHE
1	A	244	HIS
1	A	280	ARG
1	B	49	PHE
1	B	51	PHE
1	B	81	LEU
1	B	197	LEU
1	B	202	PHE
1	B	235	VAL
1	C	49	PHE
1	C	51	PHE
1	C	77	LEU
1	C	81	LEU
1	C	112	LYS
1	C	197	LEU
1	C	202	PHE
1	C	235	VAL
1	C	272	LEU
1	D	49	PHE
1	D	51	PHE
1	D	61	THR
1	D	77	LEU
1	D	81	LEU
1	D	94	VAL
1	D	169	ILE
1	D	197	LEU
1	D	202	PHE
1	E	49	PHE
1	E	51	PHE
1	E	77	LEU
1	E	81	LEU
1	E	197	LEU
1	E	202	PHE
1	E	244	HIS
1	E	274	TYR

Some sidechains can be flipped to improve hydrogen bonding and reduce clashes. All (7) such sidechains are listed below:

Mol	Chain	Res	Type
1	A	113	ASN
1	A	142	ASN
1	A	151	GLN
1	C	142	ASN
1	D	30	HIS
1	D	144	GLN
1	E	241	ASN

5.3.3 RNA ⓘ

There are no RNA molecules in this entry.

5.4 Non-standard residues in protein, DNA, RNA chains ⓘ

There are no non-standard protein/DNA/RNA residues in this entry.

5.5 Carbohydrates ⓘ

There are no carbohydrates in this entry.

5.6 Ligand geometry ⓘ

1 ligand is modelled in this entry.

In the following table, the Counts columns list the number of bonds (or angles) for which Mogul statistics could be retrieved, the number of bonds (or angles) that are observed in the model and the number of bonds (or angles) that are defined in the chemical component dictionary. The Link column lists molecule types, if any, to which the group is linked. The Z score for a bond length (or angle) is the number of standard deviations the observed value is removed from the expected value. A bond length (or angle) with $|Z| > 2$ is considered an outlier worth inspection. RMSZ is the root-mean-square of all Z scores of the bond lengths (or angles).

Mol	Type	Chain	Res	Link	Bond lengths			Bond angles		
					Counts	RMSZ	$\# Z > 2$	Counts	RMSZ	$\# Z > 2$
2	MA5	A	286	-	33,33,33	0.46	0	44,46,46	1.01	2 (4%)

In the following table, the Chirals column lists the number of chiral outliers, the number of chiral centers analysed, the number of these observed in the model and the number defined in the chemical component dictionary. Similar counts are reported in the Torsion and Rings columns. '-' means no outliers of that kind were identified.

Mol	Type	Chain	Res	Link	Chirals	Torsions	Rings
2	MA5	A	286	-	-	0/14/62/62	0/3/3/3

There are no bond length outliers.

All (2) bond angle outliers are listed below:

Mol	Chain	Res	Type	Atoms	Z	Observed($^{\circ}$)	Ideal($^{\circ}$)
2	A	286	MA5	C61-C52-C62	-2.31	107.20	112.10
2	A	286	MA5	C61-C52-C42	-2.23	107.38	112.10

There are no chirality outliers.

There are no torsion outliers.

There are no ring outliers.

No monomer is involved in short contacts.

5.7 Other polymers [i](#)

There are no such residues in this entry.

5.8 Polymer linkage issues [i](#)

There are no chain breaks in this entry.

6 Fit of model and data

6.1 Protein, DNA and RNA chains

In the following table, the column labelled ‘#RSRZ> 2’ contains the number (and percentage) of RSRZ outliers, followed by percent RSRZ outliers for the chain as percentile scores relative to all X-ray entries and entries of similar resolution. The OWAB column contains the minimum, median, 95th percentile and maximum values of the occupancy-weighted average B-factor per residue. The column labelled ‘Q< 0.9’ lists the number of (and percentage) of residues with an average occupancy less than 0.9.

Mol	Chain	Analysed	<RSRZ>	#RSRZ>2	OWAB(Å ²)	Q<0.9
1	A	252/285 (88%)	0.01	13 (5%) 31 32	39, 51, 75, 135	0
1	B	252/285 (88%)	0.22	21 (8%) 14 15	38, 54, 97, 148	0
1	C	239/285 (83%)	0.37	21 (8%) 12 13	43, 61, 106, 151	0
1	D	248/285 (87%)	1.10	56 (22%) 1 1	55, 90, 163, 260	0
1	E	249/285 (87%)	0.74	40 (16%) 3 2	45, 73, 128, 181	0
All	All	1240/1425 (87%)	0.49	151 (12%) 5 5	38, 64, 121, 260	0

All (151) RSRZ outliers are listed below:

Mol	Chain	Res	Type	RSRZ
1	D	105	ILE	16.2
1	D	108	GLY	12.2
1	D	107	TRP	10.6
1	E	106	THR	9.8
1	E	107	TRP	9.3
1	E	110	LEU	9.0
1	D	32	LEU	8.7
1	D	104	ARG	8.1
1	C	275	TRP	6.9
1	E	109	GLN	6.7
1	E	108	GLY	6.2
1	C	30	HIS	5.8
1	E	105	ILE	5.8
1	D	109	GLN	5.5
1	D	186	ARG	5.5
1	D	106	THR	5.4
1	E	104	ARG	5.3
1	E	278	TYR	5.2
1	B	280	ARG	5.2
1	D	110	LEU	5.2

Continued on next page...

Continued from previous page...

Mol	Chain	Res	Type	RSRZ
1	C	274	TYR	5.1
1	D	274	TYR	5.0
1	D	233	THR	5.0
1	A	280	ARG	4.9
1	E	237	SER	4.9
1	D	248	MET	4.8
1	D	36	TYR	4.7
1	E	248	MET	4.7
1	C	31	PRO	4.7
1	D	115	LEU	4.6
1	D	275	TRP	4.6
1	B	109	GLN	4.6
1	D	102	SER	4.5
1	B	278	TYR	4.4
1	D	103	GLY	4.2
1	D	61	THR	4.1
1	E	275	TRP	4.1
1	E	112	LYS	4.0
1	E	101	ALA	3.9
1	E	233	THR	3.9
1	B	32	LEU	3.8
1	C	186	ARG	3.8
1	D	162	ILE	3.8
1	E	33	LYS	3.7
1	E	186	ARG	3.7
1	E	274	TYR	3.7
1	D	240	GLU	3.7
1	D	231	PHE	3.6
1	D	170	LEU	3.6
1	E	32	LEU	3.6
1	C	99	ALA	3.6
1	B	275	TRP	3.5
1	D	232	TRP	3.5
1	B	103	GLY	3.4
1	E	99	ALA	3.4
1	B	115	LEU	3.3
1	D	31	PRO	3.3
1	D	229	PRO	3.3
1	E	238	ALA	3.3
1	E	103	GLY	3.3
1	D	230	GLU	3.2
1	C	29	LYS	3.2

Continued on next page...

Continued from previous page...

Mol	Chain	Res	Type	RSRZ
1	D	260	ILE	3.2
1	C	98	VAL	3.2
1	C	243	SER	3.2
1	D	245	LEU	3.2
1	D	35	PHE	3.1
1	A	32	LEU	3.1
1	B	279	LEU	3.1
1	D	249	ASN	3.1
1	D	119	PHE	3.1
1	D	114	TRP	3.1
1	A	275	TRP	3.1
1	D	183	TYR	3.0
1	E	102	SER	3.0
1	D	161	PHE	3.0
1	D	234	ALA	3.0
1	D	238	ALA	3.0
1	D	111	ALA	3.0
1	D	30	HIS	2.9
1	A	45	ILE	2.9
1	A	230	GLU	2.9
1	B	30	HIS	2.9
1	C	175	VAL	2.8
1	C	32	LEU	2.8
1	E	230	GLU	2.8
1	D	241	ASN	2.7
1	D	50	VAL	2.7
1	A	229	PRO	2.7
1	D	34	THR	2.7
1	D	45	ILE	2.7
1	A	186	ARG	2.7
1	D	112	LYS	2.7
1	D	246	THR	2.7
1	E	61	THR	2.6
1	E	227	ALA	2.6
1	E	232	TRP	2.6
1	D	171	ALA	2.6
1	D	202	PHE	2.6
1	A	175	VAL	2.6
1	B	186	ARG	2.6
1	C	112	LYS	2.6
1	B	107	TRP	2.6
1	A	47	ILE	2.6

Continued on next page...

Continued from previous page...

Mol	Chain	Res	Type	RSRZ
1	D	90	PHE	2.5
1	E	60	GLY	2.5
1	D	49	PHE	2.5
1	B	104	ARG	2.5
1	C	101	ALA	2.5
1	E	47	ILE	2.4
1	E	240	GLU	2.4
1	E	100	LYS	2.4
1	D	252	THR	2.4
1	E	221	ILE	2.4
1	D	227	ALA	2.4
1	A	278	TYR	2.4
1	C	97	VAL	2.4
1	D	60	GLY	2.3
1	B	102	SER	2.3
1	E	115	LEU	2.3
1	D	224	ARG	2.3
1	B	274	TYR	2.3
1	D	47	ILE	2.3
1	B	226	PHE	2.3
1	C	115	LEU	2.3
1	A	233	THR	2.3
1	E	185	GLY	2.3
1	E	45	ILE	2.2
1	B	105	ILE	2.2
1	A	30	HIS	2.2
1	C	50	VAL	2.2
1	B	170	LEU	2.2
1	E	239	PRO	2.1
1	E	111	ALA	2.1
1	C	162	ILE	2.1
1	B	113	ASN	2.1
1	B	119	PHE	2.1
1	B	238	ALA	2.1
1	C	45	ILE	2.1
1	D	237	SER	2.1
1	E	225	ASP	2.1
1	D	239	PRO	2.1
1	A	107	TRP	2.0
1	E	31	PRO	2.0
1	C	185	GLY	2.0
1	D	175	VAL	2.0

Continued on next page...

Continued from previous page...

Mol	Chain	Res	Type	RSRZ
1	E	34	THR	2.0
1	B	277	ILE	2.0
1	E	236	GLY	2.0
1	C	79	LEU	2.0
1	C	81	LEU	2.0

6.2 Non-standard residues in protein, DNA, RNA chains [i](#)

There are no non-standard protein/DNA/RNA residues in this entry.

6.3 Carbohydrates [i](#)

There are no carbohydrates in this entry.

6.4 Ligands [i](#)

In the following table, the Atoms column lists the number of modelled atoms in the group and the number defined in the chemical component dictionary. LLDF column lists the quality of electron density of the group with respect to its neighbouring residues in protein, DNA or RNA chains. The B-factors column lists the minimum, median, 95th percentile and maximum values of B factors of atoms in the group. The column labelled 'Q < 0.9' lists the number of atoms with occupancy less than 0.9.

Mol	Type	Chain	Res	Atoms	RSCC	RSR	LLDF	B-factors(Å ²)	Q<0.9
2	MA5	A	286	31/31	0.82	0.24	2.03	61,78,88,98	0

6.5 Other polymers [i](#)

There are no such residues in this entry.