



# Full wwPDB X-ray Structure Validation Report ⓘ

Feb 1, 2016 – 09:57 AM GMT

PDB ID : 3KCZ  
Title : Human poly(ADP-ribose) polymerase 2, catalytic fragment in complex with an inhibitor 3-aminobenzamide  
Authors : Karlberg, T.; Schutz, P.; Arrowsmith, C.H.; Berglund, H.; Bountra, C.; Collins, R.; Edwards, A.M.; Flodin, S.; Flores, A.; Graslund, S.; Hammarstrom, M.; Johansson, A.; Johansson, I.; Kallas, A.; Kotenyova, T.; Kotzsch, A.; Kraulis, P.; Nielsen, T.K.; Moche, M.; Nordlund, P.; Nyman, T.; Persson, C.; Roos, A.K.; Siponen, M.I.; Thorsell, A.G.; Tresaugues, L.; Van Den Berg, S.; Weigelt, J.; Welin, M.; Wisniewska, M.; Schuler, H.; Structural Genomics Consortium (SGC)  
Deposited on : 2009-10-22  
Resolution : 2.00 Å(reported)

This is a Full wwPDB X-ray Structure Validation Report for a publicly released PDB entry.  
We welcome your comments at [validation@mail.wwpdb.org](mailto:validation@mail.wwpdb.org)  
A user guide is available at  
<http://wwpdb.org/validation/2016/XrayValidationReportHelp>  
with specific help available everywhere you see the ⓘ symbol.

---

The following versions of software and data (see [references ⓘ](#)) were used in the production of this report:

MolProbity	:	4.02b-467
Mogul	:	1.7 (RC4), CSD as536be (2015)
Xtriage (Phenix)	:	1.9-1692
EDS	:	rb-20026688
Percentile statistics	:	20151230.v01 (using entries in the PDB archive December 30th 2015)
Refmac	:	5.8.0135
CCP4	:	6.5.0
Ideal geometry (proteins)	:	Engh & Huber (2001)
Ideal geometry (DNA, RNA)	:	Parkinson et al. (1996)
Validation Pipeline (wwPDB-VP)	:	trunk26865

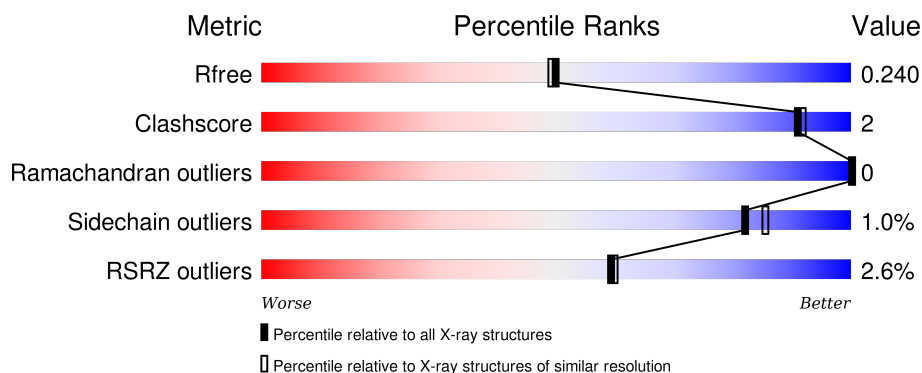
# 1 Overall quality at a glance

The following experimental techniques were used to determine the structure:

## *X-RAY DIFFRACTION*

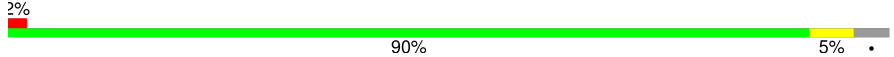

The reported resolution of this entry is 2.00 Å.

Percentile scores (ranging between 0-100) for global validation metrics of the entry are shown in the following graphic. The table shows the number of entries on which the scores are based.



Metric	Whole archive (#Entries)	Similar resolution (#Entries, resolution range(Å))
$R_{free}$	91344	6249 (2.00-2.00)
Clashscore	102246	7340 (2.00-2.00)
Ramachandran outliers	100387	7248 (2.00-2.00)
Sidechain outliers	100360	7247 (2.00-2.00)
RSRZ outliers	91569	6262 (2.00-2.00)

The table below summarises the geometric issues observed across the polymeric chains and their fit to the electron density. The red, orange, yellow and green segments on the lower bar indicate the fraction of residues that contain outliers for  $\geq 3$ , 2, 1 and 0 types of geometric quality criteria. A grey segment represents the fraction of residues that are not modelled. The numeric value for each fraction is indicated below the corresponding segment, with a dot representing fractions  $\leq 5\%$ . The upper red bar (where present) indicates the fraction of residues that have poor fit to the electron density. The numeric value is given above the bar.

Mol	Chain	Length	Quality of chain
1	A	368	
1	B	368	

The following table lists non-polymeric compounds, carbohydrate monomers and non-standard residues in protein, DNA, RNA chains that are outliers for geometric or electron-density-fit criteria:

Mol	Type	Chain	Res	Chirality	Geometry	Clashes	Electron density
3	GOL	B	580	-	-	-	X

## 2 Entry composition

There are 4 unique types of molecules in this entry. The entry contains 6002 atoms, of which 0 are hydrogens and 0 are deuteriums.

In the tables below, the ZeroOcc column contains the number of atoms modelled with zero occupancy, the AltConf column contains the number of residues with at least one atom in alternate conformation and the Trace column contains the number of residues modelled with at most 2 atoms.

- Molecule 1 is a protein called Poly [ADP-ribose] polymerase 2.

Mol	Chain	Residues	Atoms					ZeroOcc	AltConf	Trace
1	A	353	Total	C	N	O	S	0	4	0
			2825	1796	486	523	20			
1	B	348	Total	C	N	O	S	0	0	0
			2758	1751	477	510	20			

There are 48 discrepancies between the modelled and reference sequences:

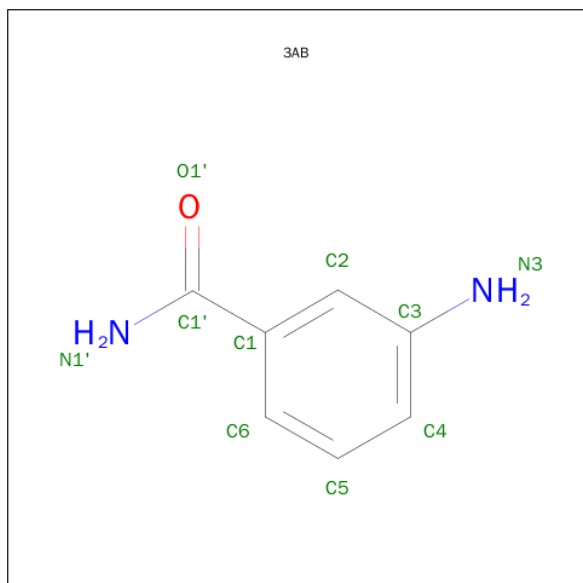
Chain	Residue	Modelled	Actual	Comment	Reference
A	212	MET	-	EXPRESSION TAG	UNP Q9UGN5
A	213	HIS	-	EXPRESSION TAG	UNP Q9UGN5
A	214	HIS	-	EXPRESSION TAG	UNP Q9UGN5
A	215	HIS	-	EXPRESSION TAG	UNP Q9UGN5
A	216	HIS	-	EXPRESSION TAG	UNP Q9UGN5
A	217	HIS	-	EXPRESSION TAG	UNP Q9UGN5
A	218	HIS	-	EXPRESSION TAG	UNP Q9UGN5
A	219	SER	-	EXPRESSION TAG	UNP Q9UGN5
A	220	SER	-	EXPRESSION TAG	UNP Q9UGN5
A	221	GLY	-	EXPRESSION TAG	UNP Q9UGN5
A	222	VAL	-	EXPRESSION TAG	UNP Q9UGN5
A	223	ASP	-	EXPRESSION TAG	UNP Q9UGN5
A	224	LEU	-	EXPRESSION TAG	UNP Q9UGN5
A	225	GLY	-	EXPRESSION TAG	UNP Q9UGN5
A	226	THR	-	EXPRESSION TAG	UNP Q9UGN5
A	227	GLU	-	EXPRESSION TAG	UNP Q9UGN5
A	228	ASN	-	EXPRESSION TAG	UNP Q9UGN5
A	229	LEU	-	EXPRESSION TAG	UNP Q9UGN5
A	230	TYR	-	EXPRESSION TAG	UNP Q9UGN5
A	231	PHE	-	EXPRESSION TAG	UNP Q9UGN5
A	232	GLN	-	EXPRESSION TAG	UNP Q9UGN5
A	233	SER	-	EXPRESSION TAG	UNP Q9UGN5
A	234	MET	-	EXPRESSION TAG	UNP Q9UGN5
A	447	HIS	PRO	SEE REMARK 999	UNP Q9UGN5
B	212	MET	-	EXPRESSION TAG	UNP Q9UGN5

*Continued on next page...*

Continued from previous page...

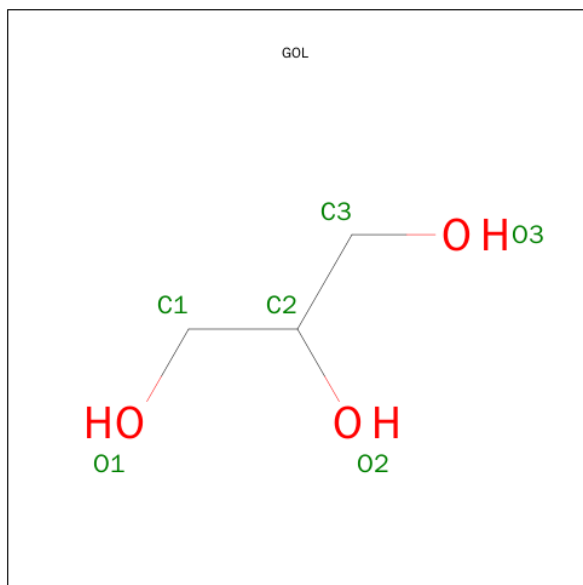
Chain	Residue	Modelled	Actual	Comment	Reference
B	213	HIS	-	EXPRESSION TAG	UNP Q9UGN5
B	214	HIS	-	EXPRESSION TAG	UNP Q9UGN5
B	215	HIS	-	EXPRESSION TAG	UNP Q9UGN5
B	216	HIS	-	EXPRESSION TAG	UNP Q9UGN5
B	217	HIS	-	EXPRESSION TAG	UNP Q9UGN5
B	218	HIS	-	EXPRESSION TAG	UNP Q9UGN5
B	219	SER	-	EXPRESSION TAG	UNP Q9UGN5
B	220	SER	-	EXPRESSION TAG	UNP Q9UGN5
B	221	GLY	-	EXPRESSION TAG	UNP Q9UGN5
B	222	VAL	-	EXPRESSION TAG	UNP Q9UGN5
B	223	ASP	-	EXPRESSION TAG	UNP Q9UGN5
B	224	LEU	-	EXPRESSION TAG	UNP Q9UGN5
B	225	GLY	-	EXPRESSION TAG	UNP Q9UGN5
B	226	THR	-	EXPRESSION TAG	UNP Q9UGN5
B	227	GLU	-	EXPRESSION TAG	UNP Q9UGN5
B	228	ASN	-	EXPRESSION TAG	UNP Q9UGN5
B	229	LEU	-	EXPRESSION TAG	UNP Q9UGN5
B	230	TYR	-	EXPRESSION TAG	UNP Q9UGN5
B	231	PHE	-	EXPRESSION TAG	UNP Q9UGN5
B	232	GLN	-	EXPRESSION TAG	UNP Q9UGN5
B	233	SER	-	EXPRESSION TAG	UNP Q9UGN5
B	234	MET	-	EXPRESSION TAG	UNP Q9UGN5
B	447	HIS	PRO	SEE REMARK 999	UNP Q9UGN5

- Molecule 2 is 3-AMINOBENZAMIDE (three-letter code: 3AB) (formula:  $C_7H_8N_2O$ ).



Mol	Chain	Residues	Atoms				ZeroOcc	AltConf
2	A	1	Total	C	N	O	0	0
			10	7	2	1		
2	B	1	Total	C	N	O	0	0
			10	7	2	1		

- Molecule 3 is GLYCEROL (three-letter code: GOL) (formula:  $C_3H_8O_3$ ).



Mol	Chain	Residues	Atoms			ZeroOcc	AltConf
3	A	1	Total	C	O	0	0
			6	3	3		
3	B	1	Total	C	O	0	0
			6	3	3		

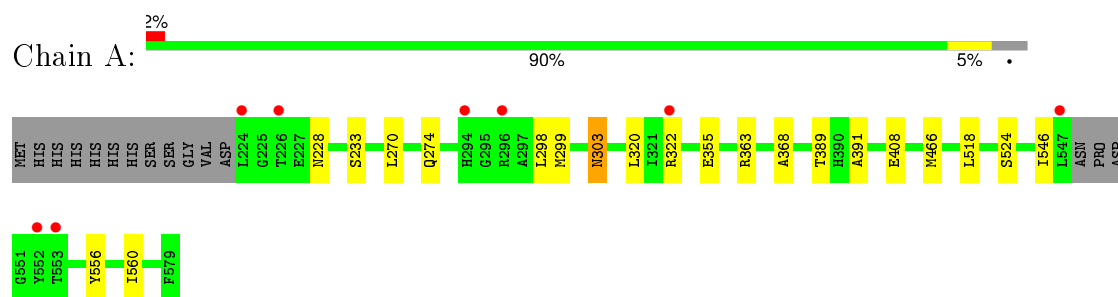
- Molecule 4 is water.

Mol	Chain	Residues	Atoms		ZeroOcc	AltConf
4	A	207	Total	O	0	0
			207	207		
4	B	180	Total	O	0	0
			180	180		

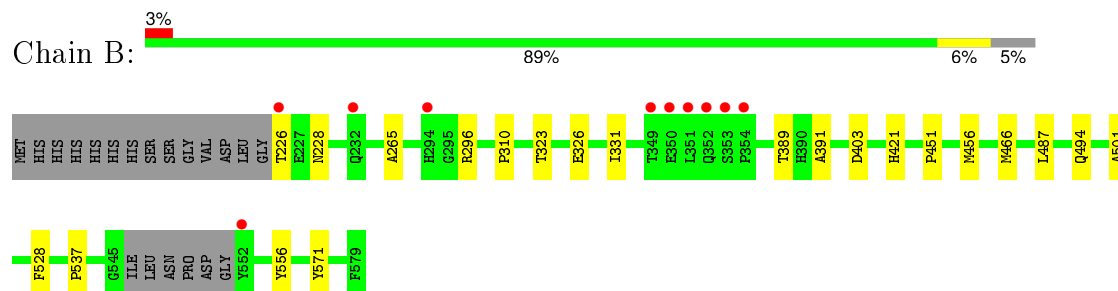
### 3 Residue-property plots [i](#)

These plots are drawn for all protein, RNA and DNA chains in the entry. The first graphic for a chain summarises the proportions of errors displayed in the second graphic. The second graphic shows the sequence view annotated by issues in geometry and electron density. Residues are color-coded according to the number of geometric quality criteria for which they contain at least one outlier: green = 0, yellow = 1, orange = 2 and red = 3 or more. A red dot above a residue indicates a poor fit to the electron density ( $RSRZ > 2$ ). Stretches of 2 or more consecutive residues without any outlier are shown as a green connector. Residues present in the sample, but not in the model, are shown in grey.

- Molecule 1: Poly [ADP-ribose] polymerase 2



- Molecule 1: Poly [ADP-ribose] polymerase 2



## 4 Data and refinement statistics

Property	Value	Source
Space group	P 1 21 1	Depositor
Cell constants a, b, c, $\alpha$ , $\beta$ , $\gamma$	58.28Å 134.72Å 58.25Å 90.00° 117.67° 90.00°	Depositor
Resolution (Å)	40.97 – 2.00 40.97 – 2.00	Depositor EDS
% Data completeness (in resolution range)	100.0 (40.97-2.00) 99.5 (40.97-2.00)	Depositor EDS
$R_{merge}$	0.11	Depositor
$R_{sym}$	0.16	Depositor
$\langle I/\sigma(I) \rangle$ <sup>1</sup>	2.88 (at 2.00Å)	Xtriage
Refinement program	REFMAC 5.5.0102	Depositor
R, $R_{free}$	0.187 , 0.237 0.192 , 0.240	Depositor DCC
$R_{free}$ test set	2667 reflections (5.26%)	DCC
Wilson B-factor (Å <sup>2</sup> )	18.4	Xtriage
Anisotropy	0.128	Xtriage
Bulk solvent $k_{sol}$ (e/Å <sup>3</sup> ), $B_{sol}$ (Å <sup>2</sup> )	0.37 , 47.1	EDS
Estimated twinning fraction	0.004 for l,k,-h-l 0.004 for -h-l,k,h 0.047 for -h-l,-k,l 0.029 for h,-k,-h-l 0.029 for l,-k,h	Xtriage
L-test for twinning <sup>2</sup>	$\langle  L  \rangle = 0.49$ , $\langle L^2 \rangle = 0.33$	Xtriage
Outliers	0 of 53327 reflections	Xtriage
$F_o, F_c$ correlation	0.94	EDS
Total number of atoms	6002	wwPDB-VP
Average B, all atoms (Å <sup>2</sup> )	19.0	wwPDB-VP

Xtriage's analysis on translational NCS is as follows: *The largest off-origin peak in the Patterson function is 5.83% of the height of the origin peak. No significant pseudotranslation is detected.*

<sup>1</sup> Intensities estimated from amplitudes.

<sup>2</sup> Theoretical values of  $\langle |L| \rangle$ ,  $\langle L^2 \rangle$  for acentric reflections are 0.5, 0.375 respectively for untwinned datasets, and 0.333, 0.2 for perfectly twinned datasets.



## 5 Model quality

### 5.1 Standard geometry

Bond lengths and bond angles in the following residue types are not validated in this section: GOL, 3AB

The Z score for a bond length (or angle) is the number of standard deviations the observed value is removed from the expected value. A bond length (or angle) with  $|Z| > 5$  is considered an outlier worth inspection. RMSZ is the root-mean-square of all Z scores of the bond lengths (or angles).

Mol	Chain	Bond lengths		Bond angles	
		RMSZ	$\# Z  > 5$	RMSZ	$\# Z  > 5$
1	A	0.66	0/2895	0.69	0/3904
1	B	0.64	0/2816	0.68	0/3798
All	All	0.65	0/5711	0.69	0/7702

There are no bond length outliers.

There are no bond angle outliers.

There are no chirality outliers.

There are no planarity outliers.

### 5.2 Too-close contacts

In the following table, the Non-H and H(model) columns list the number of non-hydrogen atoms and hydrogen atoms in the chain respectively. The H(added) column lists the number of hydrogen atoms added and optimized by MolProbity. The Clashes column lists the number of clashes within the asymmetric unit, whereas Symm-Clashes lists symmetry related clashes.

Mol	Chain	Non-H	H(model)	H(added)	Clashes	Symm-Clashes
1	A	2825	0	2835	13	0
1	B	2758	0	2744	12	0
2	A	10	0	8	0	0
2	B	10	0	8	0	0
3	A	6	0	8	0	0
3	B	6	0	8	0	0
4	A	207	0	0	0	0
4	B	180	0	0	0	0
All	All	6002	0	5611	25	0

The all-atom clashscore is defined as the number of clashes found per 1000 atoms (including hydrogen atoms). The all-atom clashscore for this structure is 2.

All (25) close contacts within the same asymmetric unit are listed below, sorted by their clash magnitude.

Atom-1	Atom-2	Interatomic distance (Å)	Clash overlap (Å)
1:B:323:THR:HG23	1:B:326:GLU:H	1.33	0.92
1:A:355:GLU:OE1	1:A:363:ARG:NH1	2.34	0.59
1:B:421:HIS:NE2	1:B:494:GLN:OE1	2.35	0.56
1:A:299:MET:HB3	1:A:320:LEU:HD21	1.86	0.56
1:A:298:LEU:HD21	1:A:322:ARG:HG2	1.88	0.54
1:A:518:LEU:HD13	1:A:546:ILE:HD13	1.91	0.52
1:A:298:LEU:HD21	1:A:322:ARG:CG	2.39	0.52
1:B:391:ALA:HB1	1:B:556:TYR:CZ	2.45	0.52
1:A:303:ASN:C	1:A:303:ASN:OD1	2.50	0.49
1:A:518:LEU:HD13	1:A:546:ILE:CD1	2.42	0.49
1:A:391:ALA:HB1	1:A:556:TYR:CZ	2.48	0.48
1:A:368:ALA:HB3	1:A:408:GLU:HB3	1.97	0.47
1:A:389:THR:HB	1:A:466:MET:HA	1.97	0.47
1:A:228[A]:ASN:OD1	1:A:233:SER:HB2	2.16	0.46
1:B:389:THR:HB	1:B:466:MET:HA	1.98	0.46
1:B:456:MET:HG3	1:B:501:ALA:CB	2.47	0.45
1:B:331:ILE:HD11	1:B:451:PRO:HG2	1.99	0.45
1:B:323:THR:HG22	1:B:326:GLU:CG	2.48	0.44
1:B:487:LEU:HB2	1:B:571:TYR:HB2	2.00	0.43
1:B:528:PHE:CD2	1:B:537:PRO:HA	2.55	0.42
1:A:270:LEU:HA	1:A:274:GLN:OE1	2.20	0.42
1:B:265:ALA:HB2	1:B:310:PRO:HG2	2.01	0.41
1:B:323:THR:HG23	1:B:326:GLU:N	2.16	0.41
1:B:456:MET:HG3	1:B:501:ALA:HB2	2.02	0.41
1:A:560:ILE:HD12	1:A:560:ILE:N	2.37	0.40

There are no symmetry-related clashes.

## 5.3 Torsion angles ⓘ

### 5.3.1 Protein backbone ⓘ

In the following table, the Percentiles column shows the percent Ramachandran outliers of the chain as a percentile score with respect to all X-ray entries followed by that with respect to entries of similar resolution.

The Analysed column shows the number of residues for which the backbone conformation was analysed, and the total number of residues.

Mol	Chain	Analysed	Favoured	Allowed	Outliers	Percentiles	
1	A	353/368 (96%)	347 (98%)	6 (2%)	0	100	100
1	B	344/368 (94%)	337 (98%)	7 (2%)	0	100	100
All	All	697/736 (95%)	684 (98%)	13 (2%)	0	100	100

There are no Ramachandran outliers to report.

### 5.3.2 Protein sidechains ⓘ

In the following table, the Percentiles column shows the percent sidechain outliers of the chain as a percentile score with respect to all X-ray entries followed by that with respect to entries of similar resolution.

The Analysed column shows the number of residues for which the sidechain conformation was analysed, and the total number of residues.

Mol	Chain	Analysed	Rotameric	Outliers	Percentiles	
1	A	309/320 (97%)	307 (99%)	2 (1%)	90	93
1	B	298/320 (93%)	294 (99%)	4 (1%)	76	79
All	All	607/640 (95%)	601 (99%)	6 (1%)	82	85

All (6) residues with a non-rotameric sidechain are listed below:

Mol	Chain	Res	Type
1	A	303	ASN
1	A	524	SER
1	B	226	THR
1	B	228	ASN
1	B	296	ARG
1	B	403	ASP

Some sidechains can be flipped to improve hydrogen bonding and reduce clashes. All (1) such sidechains are listed below:

Mol	Chain	Res	Type
1	A	494	GLN

### 5.3.3 RNA ⓘ

There are no RNA molecules in this entry.

## 5.4 Non-standard residues in protein, DNA, RNA chains ⓘ

There are no non-standard protein/DNA/RNA residues in this entry.

## 5.5 Carbohydrates ⓘ

There are no carbohydrates in this entry.

## 5.6 Ligand geometry ⓘ

4 ligands are modelled in this entry.

In the following table, the Counts columns list the number of bonds (or angles) for which Mogul statistics could be retrieved, the number of bonds (or angles) that are observed in the model and the number of bonds (or angles) that are defined in the chemical component dictionary. The Link column lists molecule types, if any, to which the group is linked. The Z score for a bond length (or angle) is the number of standard deviations the observed value is removed from the expected value. A bond length (or angle) with  $|Z| > 2$  is considered an outlier worth inspection. RMSZ is the root-mean-square of all Z scores of the bond lengths (or angles).

Mol	Type	Chain	Res	Link	Bond lengths			Bond angles		
					Counts	RMSZ	# $ Z  > 2$	Counts	RMSZ	# $ Z  > 2$
2	3AB	A	1	-	10,10,10	0.81	1 (10%)	13,13,13	1.19	1 (7%)
3	GOL	A	580	-	5,5,5	0.48	0	5,5,5	0.50	0
2	3AB	B	1	-	10,10,10	0.64	0	13,13,13	0.85	0
3	GOL	B	580	-	5,5,5	0.43	0	5,5,5	0.70	0

In the following table, the Chirals column lists the number of chiral outliers, the number of chiral centers analysed, the number of these observed in the model and the number defined in the chemical component dictionary. Similar counts are reported in the Torsion and Rings columns. '-' means no outliers of that kind were identified.

Mol	Type	Chain	Res	Link	Chirals	Torsions	Rings
2	3AB	A	1	-	-	0/4/4/4	0/1/1/1
3	GOL	A	580	-	-	0/4/4/4	0/0/0/0
2	3AB	B	1	-	-	0/4/4/4	0/1/1/1
3	GOL	B	580	-	-	0/4/4/4	0/0/0/0

All (1) bond length outliers are listed below:

Mol	Chain	Res	Type	Atoms	Z	Observed(Å)	Ideal(Å)
2	A	1	3AB	C1-C1'	2.08	1.53	1.50

All (1) bond angle outliers are listed below:

Mol	Chain	Res	Type	Atoms	Z	Observed( $^{\circ}$ )	Ideal( $^{\circ}$ )
2	A	1	3AB	O1'-C1'-C1	2.08	121.86	119.59

There are no chirality outliers.

There are no torsion outliers.

There are no ring outliers.

No monomer is involved in short contacts.

## 5.7 Other polymers [i](#)

There are no such residues in this entry.

## 5.8 Polymer linkage issues [i](#)

There are no chain breaks in this entry.

## 6 Fit of model and data [i](#)

### 6.1 Protein, DNA and RNA chains [i](#)

In the following table, the column labelled ‘#RSRZ> 2’ contains the number (and percentage) of RSRZ outliers, followed by percent RSRZ outliers for the chain as percentile scores relative to all X-ray entries and entries of similar resolution. The OWAB column contains the minimum, median, 95<sup>th</sup> percentile and maximum values of the occupancy-weighted average B-factor per residue. The column labelled ‘Q< 0.9’ lists the number of (and percentage) of residues with an average occupancy less than 0.9.

Mol	Chain	Analysed	<RSRZ>	#RSRZ>2	OWAB(Å <sup>2</sup> )	Q<0.9
1	A	353/368 (95%)	-0.38	8 (2%) 64 64	7, 17, 33, 44	0
1	B	348/368 (94%)	-0.27	10 (2%) 55 56	8, 18, 37, 48	0
All	All	701/736 (95%)	-0.33	18 (2%) 59 60	7, 18, 34, 48	0

All (18) RSRZ outliers are listed below:

Mol	Chain	Res	Type	RSRZ
1	B	552	TYR	4.3
1	B	226	THR	4.2
1	B	354	PRO	4.2
1	B	352	GLN	4.0
1	A	547	LEU	3.3
1	A	552	TYR	3.0
1	B	351	LEU	2.9
1	A	322	ARG	2.8
1	B	232	GLN	2.8
1	A	294	HIS	2.6
1	B	294	HIS	2.5
1	A	296	ARG	2.4
1	B	353	SER	2.3
1	A	224	LEU	2.3
1	B	349	THR	2.2
1	B	350	GLU	2.1
1	A	226	THR	2.1
1	A	553	THR	2.1

### 6.2 Non-standard residues in protein, DNA, RNA chains [i](#)

There are no non-standard protein/DNA/RNA residues in this entry.

### 6.3 Carbohydrates [i](#)

There are no carbohydrates in this entry.

### 6.4 Ligands [i](#)

In the following table, the Atoms column lists the number of modelled atoms in the group and the number defined in the chemical component dictionary. LLDF column lists the quality of electron density of the group with respect to its neighbouring residues in protein, DNA or RNA chains. The B-factors column lists the minimum, median, 95<sup>th</sup> percentile and maximum values of B factors of atoms in the group. The column labelled 'Q< 0.9' lists the number of atoms with occupancy less than 0.9.

Mol	Type	Chain	Res	Atoms	RSCC	RSR	LLDF	B-factors( $\text{\AA}^2$ )	Q<0.9
3	GOL	B	580	6/6	0.94	0.11	2.47	13,23,23,25	0
2	3AB	B	1	10/10	0.96	0.09	1.09	11,13,14,15	0
3	GOL	A	580	6/6	0.92	0.11	0.66	13,20,21,21	0
2	3AB	A	1	10/10	0.96	0.09	0.12	7,9,11,13	0

### 6.5 Other polymers [i](#)

There are no such residues in this entry.