



Full wwPDB X-ray Structure Validation Report ⓘ

Jan 31, 2016 – 08:27 PM GMT

PDB ID : 1KDG
Title : Crystal structure of the flavin domain of cellobiose dehydrogenase
Authors : Hallberg, B.M.; Henriksson, G.; Pettersson, G.; Divne, C.
Deposited on : 2001-11-13
Resolution : 1.50 Å(reported)

This is a Full wwPDB X-ray Structure Validation Report for a publicly released PDB entry.
We welcome your comments at validation@mail.wwpdb.org
A user guide is available at
<http://wwpdb.org/validation/2016/XrayValidationReportHelp>
with specific help available everywhere you see the ⓘ symbol.

The following versions of software and data (see [references ⓘ](#)) were used in the production of this report:

MolProbity : 4.02b-467
Mogul : 1.7 (RC4), CSD as536be (2015)
Xtriage (Phenix) : 1.9-1692
EDS : rb-20026688
Percentile statistics : 20151230.v01 (using entries in the PDB archive December 30th 2015)
Refmac : 5.8.0135
CCP4 : 6.5.0
Ideal geometry (proteins) : Engh & Huber (2001)
Ideal geometry (DNA, RNA) : Parkinson et al. (1996)
Validation Pipeline (wwPDB-VP) : trunk26865

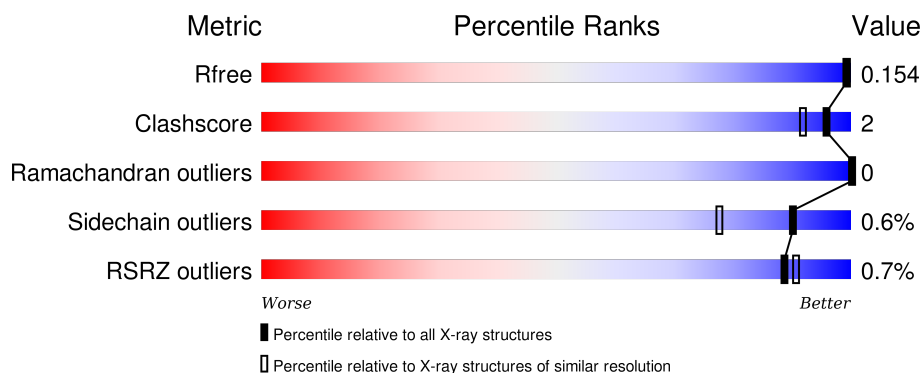
1 Overall quality at a glance

The following experimental techniques were used to determine the structure:

X-RAY DIFFRACTION

The reported resolution of this entry is 1.50 Å.

Percentile scores (ranging between 0-100) for global validation metrics of the entry are shown in the following graphic. The table shows the number of entries on which the scores are based.



Metric	Whole archive (#Entries)	Similar resolution (#Entries, resolution range(Å))
R_{free}	91344	2072 (1.50-1.50)
Clashscore	102246	2274 (1.50-1.50)
Ramachandran outliers	100387	2218 (1.50-1.50)
Sidechain outliers	100360	2216 (1.50-1.50)
RSRZ outliers	91569	2075 (1.50-1.50)

The table below summarises the geometric issues observed across the polymeric chains and their fit to the electron density. The red, orange, yellow and green segments on the lower bar indicate the fraction of residues that contain outliers for ≥ 3 , 2, 1 and 0 types of geometric quality criteria. A grey segment represents the fraction of residues that are not modelled. The numeric value for each fraction is indicated below the corresponding segment, with a dot representing fractions $\leq 5\%$. The upper red bar (where present) indicates the fraction of residues that have poor fit to the electron density. The numeric value is given above the bar.

Mol	Chain	Length	Quality of chain
1	A	546	<div> <div></div> <div>95%</div> <div>5%</div> </div>
1	B	546	<div> <div></div> <div>95%</div> <div>5%</div> </div>

The following table lists non-polymeric compounds, carbohydrate monomers and non-standard residues in protein, DNA, RNA chains that are outliers for geometric or electron-density-fit criteria:

Mol	Type	Chain	Res	Chirality	Geometry	Clashes	Electron density
2	NAG	A	802	-	-	-	X
2	NAG	A	804	-	-	-	X
2	NAG	B	804	-	-	-	X
3	MAN	B	807	-	-	-	X
6	EMT	A	6907	-	-	-	X
7	UNX	B	904	-	-	-	X

2 Entry composition [i](#)

There are 8 unique types of molecules in this entry. The entry contains 9548 atoms, of which 0 are hydrogens and 0 are deuteriums.

In the tables below, the ZeroOcc column contains the number of atoms modelled with zero occupancy, the AltConf column contains the number of residues with at least one atom in alternate conformation and the Trace column contains the number of residues modelled with at most 2 atoms.

- Molecule 1 is a protein called cellobiose dehydrogenase.

Mol	Chain	Residues	Atoms					ZeroOcc	AltConf	Trace
1	A	541	Total	C	N	O	S	0	4	0
			4075	2585	693	789	8			
1	B	546	Total	C	N	O	S	0	7	0
			4110	2605	698	799	8			

- Molecule 2 is SUGAR (N-ACETYL-D-GLUCOSAMINE) (three-letter code: NAG) (formula: $C_8H_{15}NO_6$).



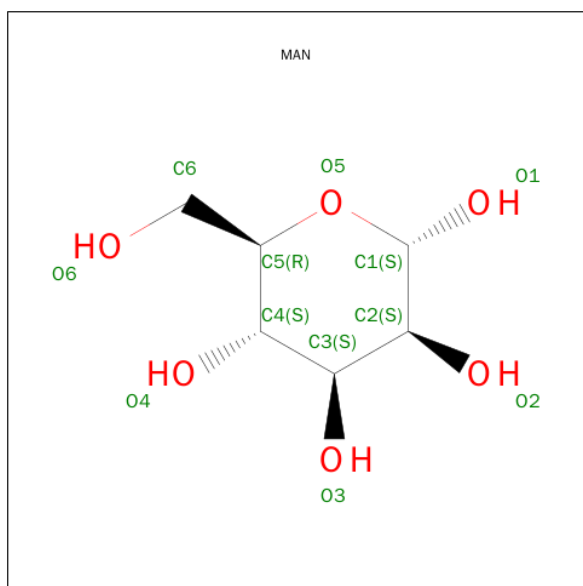
Mol	Chain	Residues	Atoms				ZeroOcc	AltConf
2	A	1	Total	C	N	O	0	0
			14	8	1	5		
2	A	1	Total	C	N	O	0	0
			14	8	1	5		
2	A	1	Total	C	N	O	0	0
			14	8	1	5		
2	B	1	Total	C	N	O	0	0
			14	8	1	5		

Continued on next page...

Continued from previous page...

Mol	Chain	Residues	Atoms				ZeroOcc	AltConf
2	B	1	Total	C	N	O	0	0
			14	8	1	5		

- Molecule 3 is SUGAR (ALPHA-D-MANNOSE) (three-letter code: MAN) (formula: $C_6H_{12}O_6$).

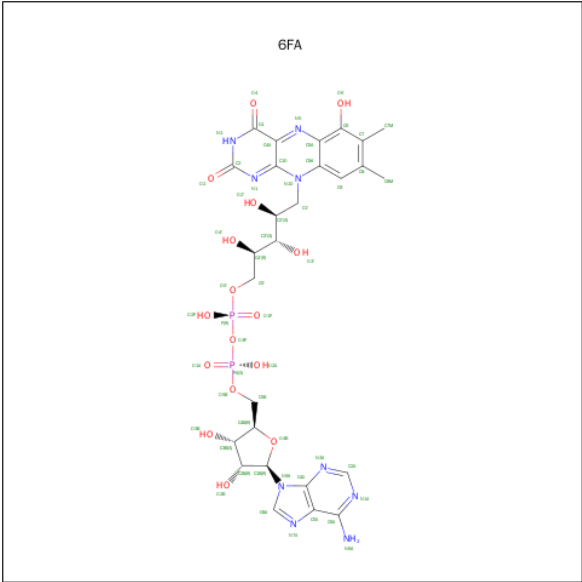


Mol	Chain	Residues	Atoms			ZeroOcc	AltConf
3	A	1	Total	C	O	0	0
			11	6	5		
3	B	1	Total	C	O	0	0
			11	6	5		
3	B	1	Total	C	O	0	0
			11	6	5		
3	B	1	Total	C	O	0	0
			11	6	5		

- Molecule 4 is MERCURY (II) ION (three-letter code: HG) (formula: Hg).

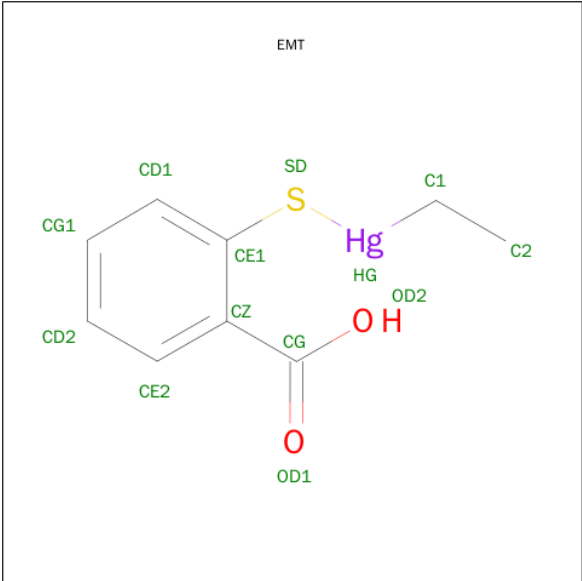
Mol	Chain	Residues	Atoms		ZeroOcc	AltConf
4	B	3	Total	Hg	0	0
			3	3		
4	A	6	Total	Hg	0	0
			6	6		

- Molecule 5 is 6-HYDROXY-FLAVIN-ADENINE DINUCLEOTIDE (three-letter code: 6FA) (formula: $C_{27}H_{33}N_9O_{16}P_2$).



Mol	Chain	Residues	Atoms					ZeroOcc	AltConf
5	A	1	Total	C	N	O	P	0	0
			54	27	9	16	2		
5	B	1	Total	C	N	O	P	0	0
			54	27	9	16	2		

- Molecule 6 is 2-(ETHYLMERCURI-THIO)-BENZOIC ACID (three-letter code: EMT) (formula: C₉H₁₀HgO₂S).



Mol	Chain	Residues	Atoms					ZeroOcc	AltConf
6	A	1	Total	C	Hg	O	S	0	0
			11	7	1	2	1		

- Molecule 7 is UNKNOWN ATOM OR ION (three-letter code: UNX) (formula: X).

Mol	Chain	Residues	Atoms		ZeroOcc	AltConf
7	B	1	Total	X	0	0
			1	1		

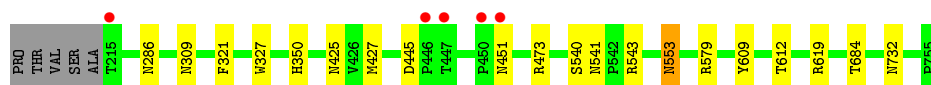
- Molecule 8 is water.

Mol	Chain	Residues	Atoms		ZeroOcc	AltConf
8	A	587	Total	O	0	0
			587	587		
8	B	533	Total	O	0	0
			533	533		

3 Residue-property plots [i](#)

These plots are drawn for all protein, RNA and DNA chains in the entry. The first graphic for a chain summarises the proportions of errors displayed in the second graphic. The second graphic shows the sequence view annotated by issues in geometry and electron density. Residues are color-coded according to the number of geometric quality criteria for which they contain at least one outlier: green = 0, yellow = 1, orange = 2 and red = 3 or more. A red dot above a residue indicates a poor fit to the electron density ($\text{RSRZ} > 2$). Stretches of 2 or more consecutive residues without any outlier are shown as a green connector. Residues present in the sample, but not in the model, are shown in grey.

- Molecule 1: cellobiose dehydrogenase



- Molecule 1: cellobiose dehydrogenase



4 Data and refinement statistics

Property	Value	Source
Space group	H 3	Depositor
Cell constants a, b, c, α , β , γ	185.07Å 185.07Å 81.03Å 90.00° 90.00° 120.00°	Depositor
Resolution (Å)	23.00 – 1.50 24.11 – 1.50	Depositor EDS
% Data completeness (in resolution range)	99.6 (23.00-1.50) 99.6 (24.11-1.50)	Depositor EDS
R_{merge}	0.08	Depositor
R_{sym}	(Not available)	Depositor
$\langle I/\sigma(I) \rangle$ ¹	1.63 (at 1.50Å)	Xtriage
Refinement program	REFMAC 5	Depositor
R, R_{free}	0.133 , 0.169 0.147 , 0.154	Depositor DCC
R_{free} test set	2460 reflections (1.51%)	DCC
Wilson B-factor (Å ²)	12.4	Xtriage
Anisotropy	0.058	Xtriage
Bulk solvent k_{sol} (e/Å ³), B_{sol} (Å ²)	0.39 , 49.0	EDS
Estimated twinning fraction	0.022 for h,-h-k,-l	Xtriage
L-test for twinning ²	$\langle L \rangle = 0.48$, $\langle L^2 \rangle = 0.30$	Xtriage
Outliers	0 of 165039 reflections	Xtriage
F_o, F_c correlation	0.97	EDS
Total number of atoms	9548	wwPDB-VP
Average B, all atoms (Å ²)	15.0	wwPDB-VP

Xtriage's analysis on translational NCS is as follows: *The largest off-origin peak in the Patterson function is 3.20% of the height of the origin peak. No significant pseudotranslation is detected.*

¹Intensities estimated from amplitudes.

²Theoretical values of $\langle |L| \rangle$, $\langle L^2 \rangle$ for acentric reflections are 0.5, 0.375 respectively for untwinned datasets, and 0.333, 0.2 for perfectly twinned datasets.

5 Model quality

5.1 Standard geometry

Bond lengths and bond angles in the following residue types are not validated in this section: NAG, UNX, 6FA, EMT, HG, MAN

The Z score for a bond length (or angle) is the number of standard deviations the observed value is removed from the expected value. A bond length (or angle) with $|Z| > 5$ is considered an outlier worth inspection. RMSZ is the root-mean-square of all Z scores of the bond lengths (or angles).

Mol	Chain	Bond lengths		Bond angles	
		RMSZ	$\# Z > 5$	RMSZ	$\# Z > 5$
1	A	0.98	1/4207 (0.0%)	0.89	4/5767 (0.1%)
1	B	1.01	3/4258 (0.1%)	0.93	8/5837 (0.1%)
All	All	0.99	4/8465 (0.0%)	0.91	12/11604 (0.1%)

All (4) bond length outliers are listed below:

Mol	Chain	Res	Type	Atoms	Z	Observed(Å)	Ideal(Å)
1	B	427	MET	CG-SD	-9.19	1.57	1.81
1	A	427	MET	CG-SD	-8.49	1.59	1.81
1	B	512	MET	CG-SD	-5.93	1.65	1.81
1	B	746	ALA	CA-CB	-5.02	1.41	1.52

All (12) bond angle outliers are listed below:

Mol	Chain	Res	Type	Atoms	Z	Observed(°)	Ideal(°)
1	B	461	ARG	NE-CZ-NH1	7.34	123.97	120.30
1	B	461	ARG	NE-CZ-NH2	-6.74	116.93	120.30
1	B	318	ASP	CB-CG-OD2	6.59	124.23	118.30
1	B	516	ASP	CB-CG-OD2	6.18	123.86	118.30
1	B	572[A]	SER	CA-CB-OG	-6.14	94.61	111.20
1	B	572[B]	SER	CA-CB-OG	-6.14	94.61	111.20
1	A	543	ARG	NE-CZ-NH2	-6.05	117.28	120.30
1	A	473	ARG	NE-CZ-NH2	-5.82	117.39	120.30
1	B	641	ASP	CB-CG-OD2	5.78	123.50	118.30
1	A	619	ARG	NE-CZ-NH2	-5.62	117.49	120.30
1	B	233	ASP	CB-CG-OD2	5.34	123.10	118.30
1	A	445	ASP	CB-CG-OD2	5.12	122.91	118.30

There are no chirality outliers.

There are no planarity outliers.

5.2 Too-close contacts ⓘ

In the following table, the Non-H and H(model) columns list the number of non-hydrogen atoms and hydrogen atoms in the chain respectively. The H(added) column lists the number of hydrogen atoms added and optimized by MolProbity. The Clashes column lists the number of clashes within the asymmetric unit, whereas Symm-Clashes lists symmetry related clashes.

Mol	Chain	Non-H	H(model)	H(added)	Clashes	Symm-Clashes
1	A	4075	0	3950	13	0
1	B	4110	0	3986	10	0
2	A	42	0	38	0	0
2	B	28	0	26	1	0
3	A	11	0	10	0	0
3	B	33	0	30	0	0
4	A	6	0	0	0	0
4	B	3	0	0	0	0
5	A	54	0	28	2	0
5	B	54	0	28	0	0
6	A	11	0	4	0	0
7	B	1	0	0	0	0
8	A	587	0	0	5	0
8	B	533	0	0	3	0
All	All	9548	0	8100	24	0

The all-atom clashscore is defined as the number of clashes found per 1000 atoms (including hydrogen atoms). The all-atom clashscore for this structure is 2.

All (24) close contacts within the same asymmetric unit are listed below, sorted by their clash magnitude.

Atom-1	Atom-2	Interatomic distance (Å)	Clash overlap (Å)
1:B:286:ASN:ND2	8:B:3417:HOH:O	2.03	0.91
1:A:286:ASN:ND2	8:A:1417:HOH:O	1.86	0.86
1:A:540:SER:OG	1:A:541[B]:ASN:ND2	2.22	0.73
1:A:541[B]:ASN:OD1	8:A:2092:HOH:O	2.16	0.58
1:B:540:SER:OG	1:B:541[B]:ASN:ND2	2.39	0.54
1:B:321:PHE:HA	1:B:327:TRP:CD1	2.48	0.48
1:A:579:ARG:HA	1:A:612:THR:O	2.14	0.47
1:A:684:THR:HG21	8:A:2136:HOH:O	2.13	0.47
1:A:309:ASN:HB2	5:A:6801:6FA:C5A	2.44	0.46
1:A:425[B]:ASN:ND2	8:A:1325:HOH:O	2.49	0.46
1:A:350:HIS:HD2	8:A:1092:HOH:O	1.99	0.45
1:B:622:ILE:HA	1:B:627:ARG:O	2.16	0.45
2:B:804:NAG:H62	8:B:3313:HOH:O	2.16	0.45

Continued on next page...

Continued from previous page...

Atom-1	Atom-2	Interatomic distance (Å)	Clash overlap (Å)
1:A:732:ASN:HB3	5:A:6801:6FA:C2	2.48	0.44
1:B:506:ILE:HG22	1:B:508:LEU:HG	1.99	0.43
1:A:553:ASN:C	1:A:553:ASN:HD22	2.21	0.42
1:B:386:TYR:CZ	1:B:390:VAL:HG22	2.54	0.42
1:B:373:GLN:NE2	8:B:3083:HOH:O	2.52	0.41
1:B:611:SER:HB2	1:B:729:PRO:O	2.20	0.41
1:A:321:PHE:HA	1:A:327:TRP:CD1	2.55	0.41
1:B:214:ALA:HB2	1:B:449:GLY:HA2	2.01	0.41
1:B:312:LEU:HD23	1:B:312:LEU:HA	1.97	0.40

There are no symmetry-related clashes.

5.3 Torsion angles [i](#)

5.3.1 Protein backbone [i](#)

In the following table, the Percentiles column shows the percent Ramachandran outliers of the chain as a percentile score with respect to all X-ray entries followed by that with respect to entries of similar resolution.

The Analysed column shows the number of residues for which the backbone conformation was analysed, and the total number of residues.

Mol	Chain	Analysed	Favoured	Allowed	Outliers	Percentiles	
1	A	543/546 (100%)	522 (96%)	21 (4%)	0	100	100
1	B	551/546 (101%)	534 (97%)	17 (3%)	0	100	100
All	All	1094/1092 (100%)	1056 (96%)	38 (4%)	0	100	100

There are no Ramachandran outliers to report.

5.3.2 Protein sidechains [i](#)

In the following table, the Percentiles column shows the percent sidechain outliers of the chain as a percentile score with respect to all X-ray entries followed by that with respect to entries of similar resolution.

The Analysed column shows the number of residues for which the sidechain conformation was analysed, and the total number of residues.

Mol	Chain	Analysed	Rotameric	Outliers	Percentiles	
1	A	443/443 (100%)	440 (99%)	3 (1%)	88	73
1	B	450/443 (102%)	448 (100%)	2 (0%)	93	84
All	All	893/886 (101%)	888 (99%)	5 (1%)	90	78

All (5) residues with a non-rotameric sidechain are listed below:

Mol	Chain	Res	Type
1	A	451	ASN
1	A	553	ASN
1	A	609	TYR
1	B	376	ASN
1	B	553	ASN

Some sidechains can be flipped to improve hydrogen bonding and reduce clashes. All (22) such sidechains are listed below:

Mol	Chain	Res	Type
1	A	333	ASN
1	A	350	HIS
1	A	356	GLN
1	A	373	GLN
1	A	377	GLN
1	A	442	GLN
1	A	451	ASN
1	A	521	ASN
1	A	553	ASN
1	A	566	ASN
1	A	602	GLN
1	A	671	GLN
1	A	701	GLN
1	B	333	ASN
1	B	350	HIS
1	B	373	GLN
1	B	442	GLN
1	B	521	ASN
1	B	553	ASN
1	B	566	ASN
1	B	602	GLN
1	B	671	GLN

5.3.3 RNA ⓘ

There are no RNA molecules in this entry.

5.4 Non-standard residues in protein, DNA, RNA chains ⓘ

There are no non-standard protein/DNA/RNA residues in this entry.

5.5 Carbohydrates ⓘ

There are no carbohydrates in this entry.

5.6 Ligand geometry ⓘ

Of 22 ligands modelled in this entry, 1 is unknown and 9 are monoatomic - leaving 12 for Mogul analysis.

In the following table, the Counts columns list the number of bonds (or angles) for which Mogul statistics could be retrieved, the number of bonds (or angles) that are observed in the model and the number of bonds (or angles) that are defined in the chemical component dictionary. The Link column lists molecule types, if any, to which the group is linked. The Z score for a bond length (or angle) is the number of standard deviations the observed value is removed from the expected value. A bond length (or angle) with $|Z| > 2$ is considered an outlier worth inspection. RMSZ is the root-mean-square of all Z scores of the bond lengths (or angles).

Mol	Type	Chain	Res	Link	Bond lengths			Bond angles		
					Counts	RMSZ	# $ Z > 2$	Counts	RMSZ	# $ Z > 2$
5	6FA	A	6801	-	48,59,59	1.77	11 (22%)	52,91,91	2.80	16 (30%)
6	EMT	A	6907	4	7,11,13	1.65	2 (28%)	8,14,16	1.70	2 (25%)
2	NAG	A	802	1	14,14,15	1.30	3 (21%)	15,19,21	1.34	2 (13%)
2	NAG	A	803	1	14,14,15	0.89	1 (7%)	15,19,21	0.92	0
2	NAG	A	804	1	14,14,15	0.76	1 (7%)	15,19,21	1.38	2 (13%)
3	MAN	A	805	1	11,11,12	0.54	0	14,15,17	1.30	2 (14%)
5	6FA	B	7801	-	48,59,59	2.24	17 (35%)	52,91,91	2.64	14 (26%)
2	NAG	B	803	1	14,14,15	1.05	1 (7%)	15,19,21	1.35	3 (20%)
2	NAG	B	804	1	14,14,15	0.75	0	15,19,21	1.31	2 (13%)
3	MAN	B	805	1	11,11,12	0.66	0	14,15,17	1.09	1 (7%)
3	MAN	B	806	1	11,11,12	0.48	0	14,15,17	1.12	1 (7%)
3	MAN	B	807	1	11,11,12	0.59	0	14,15,17	1.19	1 (7%)

In the following table, the Chirals column lists the number of chiral outliers, the number of chiral

centers analysed, the number of these observed in the model and the number defined in the chemical component dictionary. Similar counts are reported in the Torsion and Rings columns. '-' means no outliers of that kind were identified.

Mol	Type	Chain	Res	Link	Chirals	Torsions	Rings
5	6FA	A	6801	-	-	0/30/50/50	0/6/6/6
6	EMT	A	6907	4	-	0/0/6/8	0/1/1/1
2	NAG	A	802	1	-	0/6/23/26	0/1/1/1
2	NAG	A	803	1	-	0/6/23/26	0/1/1/1
2	NAG	A	804	1	-	0/6/23/26	0/1/1/1
3	MAN	A	805	1	-	0/2/19/22	0/1/1/1
5	6FA	B	7801	-	-	0/30/50/50	0/6/6/6
2	NAG	B	803	1	-	0/6/23/26	0/1/1/1
2	NAG	B	804	1	-	0/6/23/26	0/1/1/1
3	MAN	B	805	1	-	0/2/19/22	0/1/1/1
3	MAN	B	806	1	-	0/2/19/22	0/1/1/1
3	MAN	B	807	1	-	0/2/19/22	0/1/1/1

All (36) bond length outliers are listed below:

Mol	Chain	Res	Type	Atoms	Z	Observed(Å)	Ideal(Å)
5	A	6801	6FA	O3B-C3B	-4.73	1.31	1.43
5	B	7801	6FA	C2B-C3B	-4.62	1.40	1.53
5	A	6801	6FA	C1'-N10	-4.55	1.43	1.48
5	A	6801	6FA	O2B-C2B	-4.26	1.32	1.43
5	B	7801	6FA	C1'-N10	-4.25	1.43	1.48
5	B	7801	6FA	C3B-C4B	-4.17	1.41	1.53
5	B	7801	6FA	O2B-C2B	-4.06	1.33	1.43
5	B	7801	6FA	O3B-C3B	-3.85	1.33	1.43
5	B	7801	6FA	O4B-C4B	-3.54	1.36	1.45
5	A	6801	6FA	C2B-C3B	-3.49	1.43	1.53
5	B	7801	6FA	PA-O2A	-3.08	1.41	1.54
5	A	6801	6FA	C3B-C4B	-3.02	1.44	1.53
2	A	802	NAG	O4-C4	-2.69	1.36	1.43
2	A	802	NAG	C1-C2	-2.40	1.49	1.52
5	B	7801	6FA	O6-C6	-2.23	1.27	1.35
2	A	802	NAG	O5-C1	-2.19	1.40	1.43
6	A	6907	EMT	CE2-CZ	-2.19	1.36	1.39
5	B	7801	6FA	C4X-N3A	-2.15	1.32	1.35
2	B	803	NAG	C4-C3	-2.10	1.46	1.52
5	B	7801	6FA	C4A-C10	-2.10	1.37	1.41
5	A	6801	6FA	C4A-C10	-2.01	1.37	1.41
2	A	803	NAG	O7-C7	2.03	1.27	1.23
5	B	7801	6FA	C10-N1	2.08	1.39	1.35
6	A	6907	EMT	CZ-CE1	2.12	1.46	1.41

Continued on next page...

Continued from previous page...

Mol	Chain	Res	Type	Atoms	Z	Observed(Å)	Ideal(Å)
5	A	6801	6FA	C9A-N10	2.19	1.41	1.38
2	A	804	NAG	C1-C2	2.33	1.55	1.52
5	A	6801	6FA	C6-C5A	2.34	1.47	1.42
5	B	7801	6FA	C6-C5A	2.35	1.47	1.42
5	A	6801	6FA	C5X-C4X	2.43	1.46	1.40
5	A	6801	6FA	C8-C7	2.45	1.45	1.40
5	B	7801	6FA	C8-C7	2.71	1.46	1.40
5	B	7801	6FA	C2A-N1A	3.00	1.39	1.33
5	A	6801	6FA	C4-C4A	3.25	1.47	1.41
5	B	7801	6FA	C4-C4A	3.36	1.48	1.41
5	B	7801	6FA	C4A-N5	4.93	1.41	1.33
5	B	7801	6FA	C9A-N10	5.24	1.46	1.38

All (46) bond angle outliers are listed below:

Mol	Chain	Res	Type	Atoms	Z	Observed(°)	Ideal(°)
5	A	6801	6FA	N3A-C2A-N1A	-8.10	122.69	128.89
5	B	7801	6FA	N3A-C2A-N1A	-7.05	123.50	128.89
5	B	7801	6FA	C4A-C4-N3	-7.03	113.98	123.59
5	A	6801	6FA	C4-C4A-C10	-6.63	115.70	119.94
5	A	6801	6FA	C4A-C4-N3	-6.01	115.37	123.59
5	A	6801	6FA	C4B-O4B-C1B	-3.58	105.78	109.72
2	B	804	NAG	C3-C4-C5	-3.15	104.70	110.20
2	B	803	NAG	C4-C3-C2	-3.11	106.40	111.23
5	A	6801	6FA	C4A-C10-N10	-2.94	118.79	120.52
2	A	804	NAG	C2-N2-C7	-2.92	119.29	123.04
5	B	7801	6FA	C5A-N5-C4A	-2.90	114.86	116.87
6	A	6907	EMT	CG1-CD1-CE1	-2.71	114.81	119.72
5	B	7801	6FA	C5A-C9A-N10	-2.67	115.41	117.72
2	A	802	NAG	C2-N2-C7	-2.57	119.73	123.04
5	B	7801	6FA	C4B-O4B-C1B	-2.53	106.94	109.72
3	B	806	MAN	O5-C1-C2	-2.50	106.80	110.86
3	A	805	MAN	O5-C1-C2	-2.48	106.83	110.86
5	A	6801	6FA	C8M-C8-C7	-2.46	116.91	121.17
3	A	805	MAN	O3-C3-C2	-2.41	105.64	110.00
3	B	807	MAN	O2-C2-C1	-2.37	104.45	109.21
2	B	803	NAG	C1-O5-C5	-2.22	109.43	112.25
3	B	805	MAN	C2-C3-C4	-2.18	107.34	111.04
2	B	803	NAG	C6-C5-C4	-2.15	107.72	113.02
5	B	7801	6FA	C6-C5A-N5	-2.07	114.56	117.59
2	A	804	NAG	O7-C7-C8	-2.04	118.33	122.06
5	A	6801	6FA	C6-C5A-N5	-2.01	114.65	117.59

Continued on next page...

Continued from previous page...

Mol	Chain	Res	Type	Atoms	Z	Observed(°)	Ideal(°)
6	A	6907	EMT	CG1-CD2-CE2	2.00	123.12	120.19
2	A	802	NAG	O3-C3-C2	2.02	113.12	109.11
2	B	804	NAG	O5-C5-C6	2.07	111.82	107.35
5	B	7801	6FA	C5B-C4B-C3B	2.15	123.73	115.21
5	A	6801	6FA	N6A-C6A-N1A	2.30	124.15	119.20
5	A	6801	6FA	O4B-C4B-C3B	2.32	109.82	105.15
5	B	7801	6FA	O4B-C4B-C3B	2.34	109.86	105.15
5	B	7801	6FA	O4B-C1B-N9A	2.50	113.33	108.10
5	A	6801	6FA	C4-C4A-N5	2.64	121.92	118.72
5	A	6801	6FA	C2A-N1A-C6A	2.76	123.70	118.77
5	B	7801	6FA	O2B-C2B-C3B	2.89	121.24	111.83
5	A	6801	6FA	O2B-C2B-C3B	2.97	121.49	111.83
5	B	7801	6FA	O3B-C3B-C4B	3.08	120.28	111.05
5	A	6801	6FA	O3B-C3B-C4B	3.30	120.94	111.05
5	A	6801	6FA	C6-C5A-C9A	4.31	121.96	118.12
5	A	6801	6FA	C2B-C1B-N9A	5.18	122.21	114.29
5	B	7801	6FA	C4A-C10-N10	5.39	123.69	120.52
5	B	7801	6FA	C2B-C1B-N9A	7.54	125.81	114.29
5	B	7801	6FA	C4-N3-C2	8.45	122.55	115.25
5	A	6801	6FA	C4-N3-C2	10.34	124.18	115.25

There are no chirality outliers.

There are no torsion outliers.

There are no ring outliers.

2 monomers are involved in 3 short contacts:

Mol	Chain	Res	Type	Clashes	Symm-Clashes
5	A	6801	6FA	2	0
2	B	804	NAG	1	0

5.7 Other polymers [i](#)

There are no such residues in this entry.

5.8 Polymer linkage issues [i](#)

There are no chain breaks in this entry.

6 Fit of model and data [i](#)

6.1 Protein, DNA and RNA chains [i](#)

In the following table, the column labelled ‘#RSRZ> 2’ contains the number (and percentage) of RSRZ outliers, followed by percent RSRZ outliers for the chain as percentile scores relative to all X-ray entries and entries of similar resolution. The OWAB column contains the minimum, median, 95th percentile and maximum values of the occupancy-weighted average B-factor per residue. The column labelled ‘Q< 0.9’ lists the number of (and percentage) of residues with an average occupancy less than 0.9.

Mol	Chain	Analysed	<RSRZ>	#RSRZ>2		OWAB(Å ²)	Q<0.9
1	A	541/546 (99%)	-0.54	5 (0%)	85 87	7, 12, 21, 32	0
1	B	546/546 (100%)	-0.39	3 (0%)	91 93	8, 14, 23, 38	0
All	All	1087/1092 (99%)	-0.47	8 (0%)	89 91	7, 13, 23, 38	0

All (8) RSRZ outliers are listed below:

Mol	Chain	Res	Type	RSRZ
1	B	210	PRO	5.5
1	A	451	ASN	2.8
1	A	215	THR	2.5
1	A	446	PRO	2.5
1	A	447	THR	2.3
1	B	657	GLY	2.1
1	B	211	THR	2.1
1	A	450	PRO	2.0

6.2 Non-standard residues in protein, DNA, RNA chains [i](#)

There are no non-standard protein/DNA/RNA residues in this entry.

6.3 Carbohydrates [i](#)

There are no carbohydrates in this entry.

6.4 Ligands [i](#)

In the following table, the Atoms column lists the number of modelled atoms in the group and the number defined in the chemical component dictionary. LLDF column lists the quality of electron density of the group with respect to its neighbouring residues in protein, DNA or RNA chains.

The B-factors column lists the minimum, median, 95th percentile and maximum values of B factors of atoms in the group. The column labelled 'Q< 0.9' lists the number of atoms with occupancy less than 0.9.

Mol	Type	Chain	Res	Atoms	RSCC	RSR	LLDF	B-factors(Å ²)	Q<0.9
7	UNX	B	904	1/1	0.90	0.49	18.59	31,31,31,31	0
2	NAG	B	804	14/15	0.81	0.22	18.04	29,35,38,41	0
6	EMT	A	6907	11/13	0.99	0.11	9.78	14,17,25,29	1
2	NAG	A	804	14/15	0.81	0.31	9.77	34,39,49,49	0
3	MAN	B	807	11/12	0.86	0.20	7.31	27,28,31,33	0
2	NAG	A	802	14/15	0.90	0.13	4.32	15,22,29,30	0
2	NAG	B	803	14/15	0.96	0.12	1.96	15,19,24,25	0
3	MAN	B	805	11/12	0.94	0.10	0.59	15,20,23,23	0
2	NAG	A	803	14/15	0.95	0.07	0.33	16,19,22,24	0
5	6FA	A	6801	54/54	0.99	0.05	-0.56	4,7,9,12	0
5	6FA	B	7801	54/54	0.99	0.05	-0.94	6,8,11,13	0
3	MAN	B	806	11/12	0.65	0.40	-	32,34,36,38	0
4	HG	B	902	1/1	0.99	0.04	-	35,35,35,35	1
4	HG	A	901	1/1	1.00	0.05	-	14,14,14,14	1
4	HG	A	906	1/1	0.97	0.11	-	20,20,20,20	1
4	HG	A	902	1/1	0.99	0.03	-	30,30,30,30	1
4	HG	A	903	1/1	0.99	0.02	-	26,26,26,26	1
4	HG	B	903	1/1	1.00	0.04	-	34,34,34,34	1
3	MAN	A	805	11/12	0.62	0.43	-	31,34,38,39	0
4	HG	A	905	1/1	0.82	0.10	-	24,24,24,24	1
4	HG	B	901	1/1	0.99	0.09	-	25,25,25,25	1
4	HG	A	904	1/1	1.00	0.11	-	25,25,25,25	1

6.5 Other polymers [i](#)

There are no such residues in this entry.