



Full wwPDB X-ray Structure Validation Report ⓘ

Feb 1, 2016 – 06:04 PM GMT

PDB ID : 4KFT
Title : Structure of the genome packaging NTPase B204 from Sulfolobus turreted icosahedral virus 2 in complex with ATP-gammaS
Authors : Happonen, L.J.; Oksanen, E.; Kajander, T.; Goldman, A.; Butcher, S.
Deposited on : 2013-04-27
Resolution : 2.24 Å(reported)

This is a Full wwPDB X-ray Structure Validation Report for a publicly released PDB entry.
We welcome your comments at validation@mail.wwpdb.org
A user guide is available at
<http://wwpdb.org/validation/2016/XrayValidationReportHelp>
with specific help available everywhere you see the ⓘ symbol.

The following versions of software and data (see [references ⓘ](#)) were used in the production of this report:

MolProbity : 4.02b-467
Mogul : 1.7 (RC4), CSD as536be (2015)
Xtriage (Phenix) : 1.9-1692
EDS : rb-20026688
Percentile statistics : 20151230.v01 (using entries in the PDB archive December 30th 2015)
Refmac : 5.8.0135
CCP4 : 6.5.0
Ideal geometry (proteins) : Engh & Huber (2001)
Ideal geometry (DNA, RNA) : Parkinson et al. (1996)
Validation Pipeline (wwPDB-VP) : trunk26865

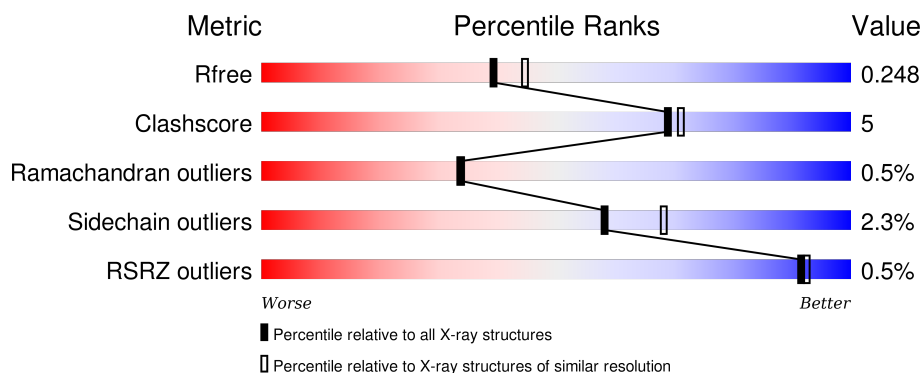
1 Overall quality at a glance

The following experimental techniques were used to determine the structure:

X-RAY DIFFRACTION

The reported resolution of this entry is 2.24 Å.

Percentile scores (ranging between 0-100) for global validation metrics of the entry are shown in the following graphic. The table shows the number of entries on which the scores are based.



Metric	Whole archive (#Entries)	Similar resolution (#Entries, resolution range(Å))
R_{free}	91344	1611 (2.26-2.22)
Clashscore	102246	1764 (2.26-2.22)
Ramachandran outliers	100387	1724 (2.26-2.22)
Sidechain outliers	100360	1724 (2.26-2.22)
RSRZ outliers	91569	1616 (2.26-2.22)

The table below summarises the geometric issues observed across the polymeric chains and their fit to the electron density. The red, orange, yellow and green segments on the lower bar indicate the fraction of residues that contain outliers for ≥ 3 , 2, 1 and 0 types of geometric quality criteria. A grey segment represents the fraction of residues that are not modelled. The numeric value for each fraction is indicated below the corresponding segment, with a dot representing fractions $\leq 5\%$. The upper red bar (where present) indicates the fraction of residues that have poor fit to the electron density. The numeric value is given above the bar.

Mol	Chain	Length	Quality of chain
1	A	212	
1	B	212	
1	C	212	
1	D	212	

The following table lists non-polymeric compounds, carbohydrate monomers and non-standard

residues in protein, DNA, RNA chains that are outliers for geometric or electron-density-fit criteria:

Mol	Type	Chain	Res	Chirality	Geometry	Clashes	Electron density
2	AGS	B	302	-	-	-	X
5	FLC	B	304	-	-	-	X
5	FLC	D	302	-	-	-	X

2 Entry composition

There are 7 unique types of molecules in this entry. The entry contains 6712 atoms, of which 0 are hydrogens and 0 are deuteriums.

In the tables below, the ZeroOcc column contains the number of atoms modelled with zero occupancy, the AltConf column contains the number of residues with at least one atom in alternate conformation and the Trace column contains the number of residues modelled with at most 2 atoms.

- Molecule 1 is a protein called Genome packaging NTPase B204.

Mol	Chain	Residues	Atoms					ZeroOcc	AltConf	Trace
1	A	195	Total	C	N	O	S	0	1	0
			1552	1023	252	274	3			
1	B	197	Total	C	N	O	S	0	0	0
			1578	1040	255	280	3			
1	C	204	Total	C	N	O	S	0	0	0
			1641	1079	268	292	2			
1	D	194	Total	C	N	O	S	0	0	0
			1506	991	240	273	2			

There are 32 discrepancies between the modelled and reference sequences:

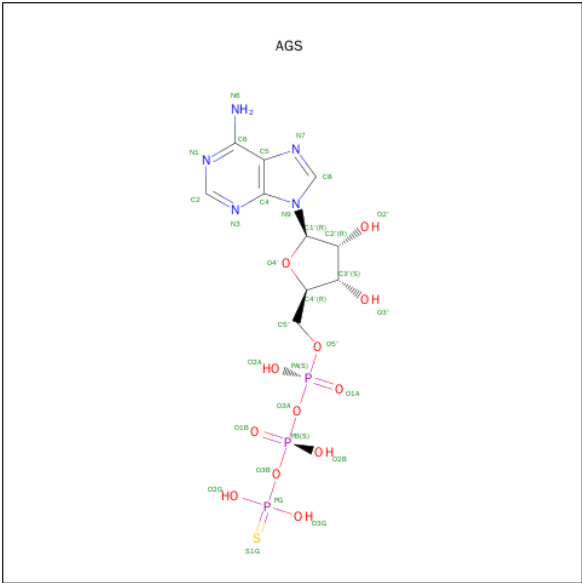
Chain	Residue	Modelled	Actual	Comment	Reference
A	205	LEU	-	EXPRESSION TAG	UNP D5IEZ9
A	206	GLU	-	EXPRESSION TAG	UNP D5IEZ9
A	207	HIS	-	EXPRESSION TAG	UNP D5IEZ9
A	208	HIS	-	EXPRESSION TAG	UNP D5IEZ9
A	209	HIS	-	EXPRESSION TAG	UNP D5IEZ9
A	210	HIS	-	EXPRESSION TAG	UNP D5IEZ9
A	211	HIS	-	EXPRESSION TAG	UNP D5IEZ9
A	212	HIS	-	EXPRESSION TAG	UNP D5IEZ9
B	205	LEU	-	EXPRESSION TAG	UNP D5IEZ9
B	206	GLU	-	EXPRESSION TAG	UNP D5IEZ9
B	207	HIS	-	EXPRESSION TAG	UNP D5IEZ9
B	208	HIS	-	EXPRESSION TAG	UNP D5IEZ9
B	209	HIS	-	EXPRESSION TAG	UNP D5IEZ9
B	210	HIS	-	EXPRESSION TAG	UNP D5IEZ9
B	211	HIS	-	EXPRESSION TAG	UNP D5IEZ9
B	212	HIS	-	EXPRESSION TAG	UNP D5IEZ9
C	205	LEU	-	EXPRESSION TAG	UNP D5IEZ9
C	206	GLU	-	EXPRESSION TAG	UNP D5IEZ9
C	207	HIS	-	EXPRESSION TAG	UNP D5IEZ9
C	208	HIS	-	EXPRESSION TAG	UNP D5IEZ9
C	209	HIS	-	EXPRESSION TAG	UNP D5IEZ9

Continued on next page...

Continued from previous page...

Chain	Residue	Modelled	Actual	Comment	Reference
C	210	HIS	-	EXPRESSION TAG	UNP D5IEZ9
C	211	HIS	-	EXPRESSION TAG	UNP D5IEZ9
C	212	HIS	-	EXPRESSION TAG	UNP D5IEZ9
D	205	LEU	-	EXPRESSION TAG	UNP D5IEZ9
D	206	GLU	-	EXPRESSION TAG	UNP D5IEZ9
D	207	HIS	-	EXPRESSION TAG	UNP D5IEZ9
D	208	HIS	-	EXPRESSION TAG	UNP D5IEZ9
D	209	HIS	-	EXPRESSION TAG	UNP D5IEZ9
D	210	HIS	-	EXPRESSION TAG	UNP D5IEZ9
D	211	HIS	-	EXPRESSION TAG	UNP D5IEZ9
D	212	HIS	-	EXPRESSION TAG	UNP D5IEZ9

- Molecule 2 is PHOSPHOTHIOPHOSPHORIC ACID-ADENYLATE ESTER (three-letter code: AGS) (formula: C₁₀H₁₆N₅O₁₂P₃S).



Mol	Chain	Residues	Atoms					ZeroOcc	AltConf
2	A	1	Total	C	N	O	P	0	0
			23	10	5	7	1		
2	A	1	Total	C	N	O	P	0	0
			27	10	5	10	2		
2	B	1	Total	C	N	O	P	0	0
			27	10	5	10	2		
2	B	1	Total	C	N	O		0	0
			19	10	5	4			
2	C	1	Total	C	N	O	P	0	0
			27	10	5	10	2		

Continued on next page...

Continued from previous page...

Mol	Chain	Residues	Atoms					ZeroOcc	AltConf
2	D	1	Total	C	N	O	P	0	0
			27	10	5	10	2		

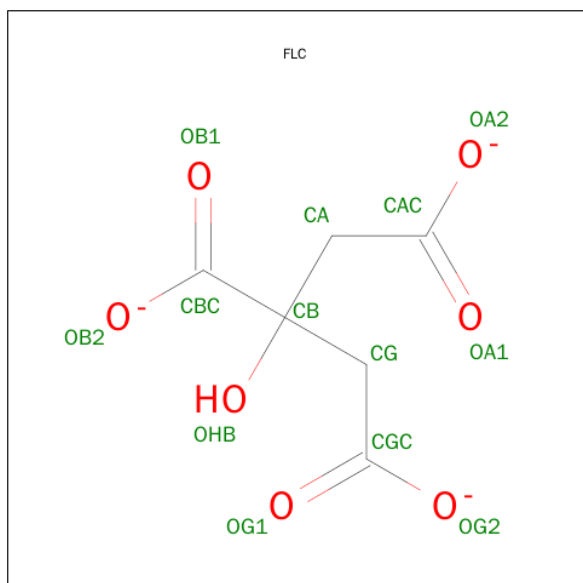
- Molecule 3 is MAGNESIUM ION (three-letter code: MG) (formula: Mg).

Mol	Chain	Residues	Atoms		ZeroOcc	AltConf
3	B	3	Total	Mg	0	0
			3	3		
3	A	1	Total	Mg	0	0
			1	1		
3	D	3	Total	Mg	0	0
			3	3		
3	C	1	Total	Mg	0	0
			1	1		

- Molecule 4 is CHLORIDE ION (three-letter code: CL) (formula: Cl).

Mol	Chain	Residues	Atoms		ZeroOcc	AltConf
4	B	1	Total	Cl	0	0
			1	1		
4	A	1	Total	Cl	0	0
			1	1		

- Molecule 5 is CITRATE ANION (three-letter code: FLC) (formula: C₆H₅O₇).



Mol	Chain	Residues	Atoms	ZeroOcc	AltConf
5	B	1	Total C O 13 6 7	0	0
5	B	1	Total C O 13 6 7	0	0
5	D	1	Total C O 13 6 7	0	0
5	D	1	Total C O 13 6 7	0	0

- Molecule 6 is ZINC ION (three-letter code: ZN) (formula: Zn).

Mol	Chain	Residues	Atoms	ZeroOcc	AltConf
6	B	1	Total Zn 1 1	0	0
6	C	1	Total Zn 1 1	0	0

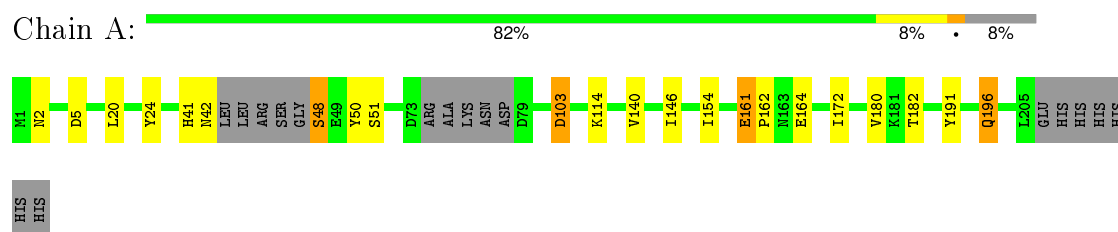
- Molecule 7 is water.

Mol	Chain	Residues	Atoms	ZeroOcc	AltConf
7	A	66	Total O 66 66	0	0
7	B	73	Total O 73 73	0	0
7	C	44	Total O 44 44	0	0
7	D	38	Total O 38 38	0	0

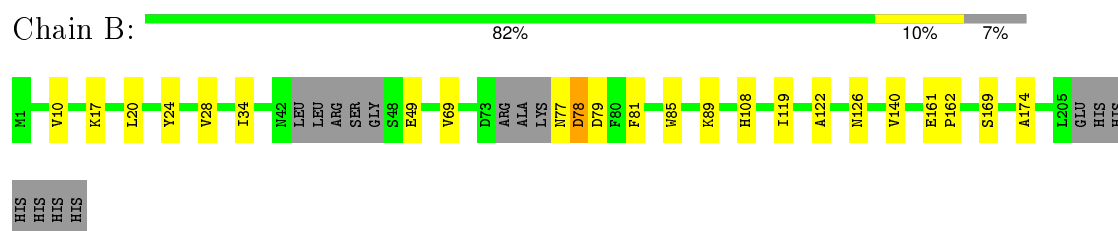
3 Residue-property plots

These plots are drawn for all protein, RNA and DNA chains in the entry. The first graphic for a chain summarises the proportions of errors displayed in the second graphic. The second graphic shows the sequence view annotated by issues in geometry and electron density. Residues are color-coded according to the number of geometric quality criteria for which they contain at least one outlier: green = 0, yellow = 1, orange = 2 and red = 3 or more. A red dot above a residue indicates a poor fit to the electron density ($RSRZ > 2$). Stretches of 2 or more consecutive residues without any outlier are shown as a green connector. Residues present in the sample, but not in the model, are shown in grey.

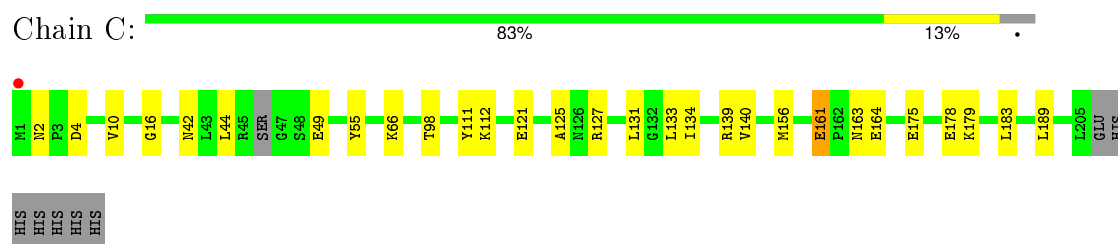
- Molecule 1: Genome packaging NTPase B204



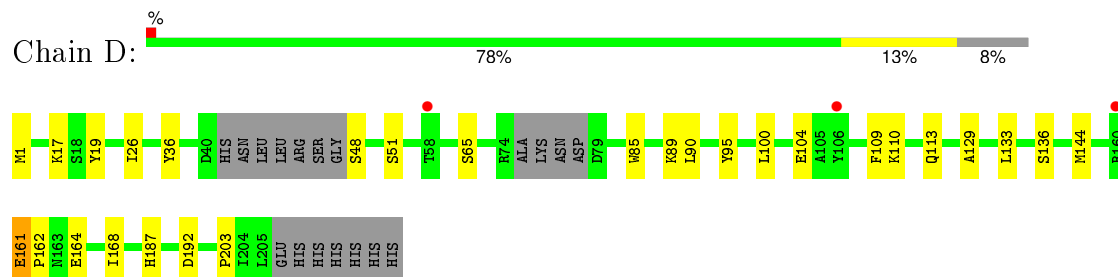
- Molecule 1: Genome packaging NTPase B204



- Molecule 1: Genome packaging NTPase B204



- Molecule 1: Genome packaging NTPase B204



4 Data and refinement statistics

Property	Value	Source
Space group	P 1	Depositor
Cell constants a, b, c, α , β , γ	46.73Å 65.19Å 71.62Å 90.55° 93.65° 91.59°	Depositor
Resolution (Å)	46.61 – 2.24 46.61 – 2.24	Depositor EDS
% Data completeness (in resolution range)	96.9 (46.61-2.24) 96.8 (46.61-2.24)	Depositor EDS
R_{merge}	0.09	Depositor
R_{sym}	(Not available)	Depositor
$\langle I/\sigma(I) \rangle$ ¹	1.87 (at 2.24Å)	Xtriage
Refinement program	PHENIX (phenix.refine: 1.8_1069)	Depositor
R, R_{free}	0.181 , 0.246 0.187 , 0.248	Depositor DCC
R_{free} test set	1963 reflections (5.26%)	DCC
Wilson B-factor (Å ²)	32.0	Xtriage
Anisotropy	0.592	Xtriage
Bulk solvent k_{sol} (e/Å ³), B_{sol} (Å ²)	0.36 , 51.4	EDS
Estimated twinning fraction	0.148 for -h,k,-l	Xtriage
L-test for twinning ²	$\langle L \rangle = 0.49$, $\langle L^2 \rangle = 0.33$	Xtriage
Outliers	0 of 39248 reflections	Xtriage
F_o, F_c correlation	0.95	EDS
Total number of atoms	6712	wwPDB-VP
Average B, all atoms (Å ²)	35.0	wwPDB-VP

Xtriage's analysis on translational NCS is as follows: *The largest off-origin peak in the Patterson function is 7.16% of the height of the origin peak. No significant pseudotranslation is detected.*

¹Intensities estimated from amplitudes.

²Theoretical values of $\langle |L| \rangle$, $\langle L^2 \rangle$ for acentric reflections are 0.5, 0.375 respectively for untwinned datasets, and 0.333, 0.2 for perfectly twinned datasets.

5 Model quality [i](#)

5.1 Standard geometry [i](#)

Bond lengths and bond angles in the following residue types are not validated in this section: MG, AGS, ZN, FLC, CL

The Z score for a bond length (or angle) is the number of standard deviations the observed value is removed from the expected value. A bond length (or angle) with $|Z| > 5$ is considered an outlier worth inspection. RMSZ is the root-mean-square of all Z scores of the bond lengths (or angles).

Mol	Chain	Bond lengths		Bond angles	
		RMSZ	$\# Z > 5$	RMSZ	$\# Z > 5$
1	A	0.43	0/1593	0.58	0/2160
1	B	0.40	0/1616	0.58	0/2189
1	C	0.38	0/1682	0.57	0/2281
1	D	0.34	0/1543	0.53	0/2103
All	All	0.39	0/6434	0.57	0/8733

There are no bond length outliers.

There are no bond angle outliers.

There are no chirality outliers.

There are no planarity outliers.

5.2 Too-close contacts [i](#)

In the following table, the Non-H and H(model) columns list the number of non-hydrogen atoms and hydrogen atoms in the chain respectively. The H(added) column lists the number of hydrogen atoms added and optimized by MolProbity. The Clashes column lists the number of clashes within the asymmetric unit, whereas Symm-Clashes lists symmetry related clashes.

Mol	Chain	Non-H	H(model)	H(added)	Clashes	Symm-Clashes
1	A	1552	0	1544	12	0
1	B	1578	0	1561	14	0
1	C	1641	0	1629	14	0
1	D	1506	0	1437	16	0
2	A	50	0	24	0	0
2	B	46	0	24	5	0
2	C	27	0	12	1	0
2	D	27	0	12	3	0
3	A	1	0	0	0	0

Continued on next page...

Continued from previous page...

Mol	Chain	Non-H	H(model)	H(added)	Clashes	Symm-Clashes
3	B	3	0	0	0	0
3	C	1	0	0	0	0
3	D	3	0	0	0	0
4	A	1	0	0	0	0
4	B	1	0	0	0	0
5	B	26	0	9	0	0
5	D	26	0	8	1	0
6	B	1	0	0	0	0
6	C	1	0	0	0	0
7	A	66	0	0	2	0
7	B	73	0	0	3	0
7	C	44	0	0	0	0
7	D	38	0	0	1	0
All	All	6712	0	6260	58	0

The all-atom clashscore is defined as the number of clashes found per 1000 atoms (including hydrogen atoms). The all-atom clashscore for this structure is 5.

All (58) close contacts within the same asymmetric unit are listed below, sorted by their clash magnitude.

Atom-1	Atom-2	Interatomic distance (Å)	Clash overlap (Å)
1:B:78:ASP:OD1	1:B:108:HIS:ND1	2.11	0.83
1:A:42:ASN:ND2	1:A:103[A]:ASP:OD2	2.26	0.68
1:C:161:GLU:HG2	1:C:164:GLU:HG3	1.76	0.68
1:C:10:VAL:HG11	1:C:140:VAL:HG22	1.78	0.65
1:A:50:TYR:OH	1:A:103[B]:ASP:OD1	2.21	0.58
2:B:302:AGS:H2	1:C:183:LEU:O	2.05	0.55
1:C:161:GLU:OE2	1:C:163:ASN:ND2	2.40	0.55
1:D:161:GLU:HB3	1:D:164:GLU:HG3	1.90	0.54
1:A:2:ASN:N	1:A:5:ASP:OD2	2.40	0.54
1:A:140:VAL:HG12	1:A:164:GLU:HG2	1.88	0.53
1:A:20:LEU:O	1:A:24:TYR:HB3	2.09	0.53
1:D:26:ILE:HG23	1:D:36:TYR:CE2	2.44	0.52
1:A:191:TYR:OH	1:A:196:GLN:HG3	2.10	0.52
1:B:34:ILE:HD11	2:B:302:AGS:H8	1.92	0.52
1:A:48:SER:N	1:A:51:SER:HG	2.08	0.51
1:C:111:TYR:CE2	1:C:112:LYS:HE2	2.47	0.50
1:B:10:VAL:HG11	1:B:140:VAL:HG22	1.94	0.50
1:D:109:PHE:O	1:D:144:MET:HG3	2.12	0.49
1:B:169:SER:HB3	1:B:174:ALA:HA	1.94	0.49
1:D:1:MET:N	7:D:413:HOH:O	2.25	0.49

Continued on next page...

Continued from previous page...

Atom-1	Atom-2	Interatomic distance (Å)	Clash overlap (Å)
1:B:34:ILE:HD11	2:B:302:AGS:C8	2.43	0.48
1:C:121:GLU:HG3	1:C:125:ALA:HB3	1.95	0.48
1:C:4:ASP:HB2	1:C:127:ARG:HG2	1.94	0.48
1:A:182:THR:OG1	7:A:453:HOH:O	2.19	0.48
1:B:28:VAL:HG12	2:B:302:AGS:H5'1	1.95	0.47
1:D:48:SER:N	1:D:51:SER:HG	2.11	0.47
1:C:44:LEU:HD11	1:C:49:GLU:HA	1.97	0.47
1:D:110:LYS:O	1:D:113:GLN:HB3	2.16	0.46
1:A:154:ILE:HD13	1:A:172:ILE:HD13	1.96	0.45
1:C:175:GLU:O	1:C:179:LYS:HG2	2.17	0.45
1:D:164:GLU:O	1:D:168:ILE:HG13	2.17	0.45
1:D:65:SER:O	1:D:95:TYR:OH	2.16	0.45
2:D:301:AGS:H5'1	2:D:301:AGS:H8	2.00	0.44
1:A:42:ASN:HB2	7:A:464:HOH:O	2.18	0.44
1:A:146:ILE:HG23	7:B:449:HOH:O	2.18	0.44
1:D:17:LYS:HG2	2:D:301:AGS:O3B	2.19	0.43
1:C:16:GLY:HA2	2:C:301:AGS:H8	1.99	0.43
1:D:100:LEU:HB3	1:D:133:LEU:HD12	1.99	0.43
1:B:77:ASN:C	1:B:79:ASP:H	2.21	0.43
1:D:192:ASP:OD2	5:D:302:FLC:OHB	2.36	0.43
1:D:85:TRP:NE1	1:D:89:LYS:HD2	2.33	0.43
1:B:85:TRP:NE1	1:B:89:LYS:HD2	2.34	0.43
2:B:302:AGS:O2'	7:B:408:HOH:O	2.21	0.43
1:C:133:LEU:O	1:C:134:ILE:HD13	2.19	0.42
1:C:156:MET:HE3	1:C:189:LEU:HD22	2.02	0.42
1:C:55:TYR:CD2	1:C:66:LYS:HG3	2.55	0.42
1:C:98:THR:HB	1:C:131:LEU:HD23	2.01	0.42
1:B:108:HIS:CD2	7:B:465:HOH:O	2.72	0.42
1:B:161:GLU:HA	1:B:162:PRO:HD3	1.81	0.42
1:D:161:GLU:HA	1:D:162:PRO:HD2	1.92	0.41
1:B:122:ALA:O	1:B:126:ASN:HB3	2.19	0.41
1:A:161:GLU:HA	1:A:162:PRO:HD3	1.95	0.41
1:D:19:TYR:CD1	2:D:301:AGS:H2'	2.56	0.41
1:D:89:LYS:HG2	1:D:129:ALA:HB1	2.03	0.41
1:B:20:LEU:HD12	1:B:24:TYR:HB3	2.02	0.41
1:B:81:PHE:CE2	1:B:119:ILE:HD13	2.56	0.41
1:D:187:HIS:CE1	1:D:203:PRO:HD3	2.56	0.40
1:B:17:LYS:HB2	1:B:17:LYS:HE2	1.83	0.40

There are no symmetry-related clashes.

5.3 Torsion angles [i](#)

5.3.1 Protein backbone [i](#)

In the following table, the Percentiles column shows the percent Ramachandran outliers of the chain as a percentile score with respect to all X-ray entries followed by that with respect to entries of similar resolution.

The Analysed column shows the number of residues for which the backbone conformation was analysed, and the total number of residues.

Mol	Chain	Analysed	Favoured	Allowed	Outliers	Percentiles	
1	A	190/212 (90%)	181 (95%)	9 (5%)	0	100	100
1	B	191/212 (90%)	183 (96%)	6 (3%)	2 (1%)	19	14
1	C	200/212 (94%)	187 (94%)	12 (6%)	1 (0%)	34	34
1	D	188/212 (89%)	179 (95%)	8 (4%)	1 (0%)	34	34
All	All	769/848 (91%)	730 (95%)	35 (5%)	4 (0%)	34	34

All (4) Ramachandran outliers are listed below:

Mol	Chain	Res	Type
1	C	2	ASN
1	D	104	GLU
1	B	78	ASP
1	B	49	GLU

5.3.2 Protein sidechains [i](#)

In the following table, the Percentiles column shows the percent sidechain outliers of the chain as a percentile score with respect to all X-ray entries followed by that with respect to entries of similar resolution.

The Analysed column shows the number of residues for which the sidechain conformation was analysed, and the total number of residues.

Mol	Chain	Analysed	Rotameric	Outliers	Percentiles	
1	A	162/192 (84%)	154 (95%)	8 (5%)	31	33
1	B	164/192 (85%)	163 (99%)	1 (1%)	90	94
1	C	171/192 (89%)	167 (98%)	4 (2%)	58	68
1	D	151/192 (79%)	148 (98%)	3 (2%)	63	73
All	All	648/768 (84%)	632 (98%)	16 (2%)	58	65

All (16) residues with a non-rotameric sidechain are listed below:

Mol	Chain	Res	Type
1	A	41	HIS
1	A	48	SER
1	A	103[A]	ASP
1	A	103[B]	ASP
1	A	114	LYS
1	A	161	GLU
1	A	180	VAL
1	A	196	GLN
1	B	69	VAL
1	C	42	ASN
1	C	139	ARG
1	C	161	GLU
1	C	178	GLU
1	D	90	LEU
1	D	136	SER
1	D	161	GLU

Some sidechains can be flipped to improve hydrogen bonding and reduce clashes. All (4) such sidechains are listed below:

Mol	Chain	Res	Type
1	B	2	ASN
1	B	32	HIS
1	C	56	ASN
1	D	23	HIS

5.3.3 RNA ⓘ

There are no RNA molecules in this entry.

5.4 Non-standard residues in protein, DNA, RNA chains ⓘ

There are no non-standard protein/DNA/RNA residues in this entry.

5.5 Carbohydrates ⓘ

There are no carbohydrates in this entry.

5.6 Ligand geometry

Of 22 ligands modelled in this entry, 12 are monoatomic - leaving 10 for Mogul analysis.

In the following table, the Counts columns list the number of bonds (or angles) for which Mogul statistics could be retrieved, the number of bonds (or angles) that are observed in the model and the number of bonds (or angles) that are defined in the chemical component dictionary. The Link column lists molecule types, if any, to which the group is linked. The Z score for a bond length (or angle) is the number of standard deviations the observed value is removed from the expected value. A bond length (or angle) with $|Z| > 2$ is considered an outlier worth inspection. RMSZ is the root-mean-square of all Z scores of the bond lengths (or angles).

Mol	Type	Chain	Res	Link	Bond lengths			Bond angles		
					Counts	RMSZ	# Z > 2	Counts	RMSZ	# Z > 2
2	AGS	A	301	-	20,25,33	1.67	3 (15%)	22,38,52	2.78	5 (22%)
2	AGS	A	302	3	22,29,33	1.54	3 (13%)	27,45,52	2.73	5 (18%)
2	AGS	B	301	3	22,29,33	1.62	5 (22%)	27,45,52	2.84	4 (14%)
2	AGS	B	302	-	16,21,33	0.96	2 (12%)	16,31,52	2.82	3 (18%)
5	FLC	B	303	3	3,12,12	3.04	3 (100%)	3,17,17	1.94	1 (33%)
5	FLC	B	304	3	3,12,12	2.89	3 (100%)	3,17,17	2.28	2 (66%)
2	AGS	C	301	3	22,29,33	1.63	5 (22%)	27,45,52	2.79	7 (25%)
2	AGS	D	301	3	22,29,33	1.61	4 (18%)	27,45,52	2.62	5 (18%)
5	FLC	D	302	3	3,12,12	3.00	3 (100%)	3,17,17	2.21	2 (66%)
5	FLC	D	303	3	3,12,12	2.86	3 (100%)	3,17,17	1.77	1 (33%)

In the following table, the Chirals column lists the number of chiral outliers, the number of chiral centers analysed, the number of these observed in the model and the number defined in the chemical component dictionary. Similar counts are reported in the Torsion and Rings columns. '-' means no outliers of that kind were identified.

Mol	Type	Chain	Res	Link	Chirals	Torsions	Rings
2	AGS	A	301	-	-	0/6/26/38	0/3/3/3
2	AGS	A	302	3	-	0/12/32/38	0/3/3/3
2	AGS	B	301	3	-	0/12/32/38	0/3/3/3
2	AGS	B	302	-	-	0/2/22/38	0/3/3/3
5	FLC	B	303	3	-	0/6/16/16	0/0/0/0
5	FLC	B	304	3	-	0/6/16/16	0/0/0/0
2	AGS	C	301	3	-	0/12/32/38	0/3/3/3
2	AGS	D	301	3	-	0/12/32/38	0/3/3/3
5	FLC	D	302	3	-	0/6/16/16	0/0/0/0
5	FLC	D	303	3	-	0/6/16/16	0/0/0/0

All (34) bond length outliers are listed below:

Mol	Chain	Res	Type	Atoms	Z	Observed(Å)	Ideal(Å)
2	C	301	AGS	C2'-C3'	-4.63	1.40	1.53
2	A	302	AGS	C2'-C3'	-4.48	1.41	1.53
2	A	301	AGS	C2'-C3'	-4.44	1.41	1.53
2	D	301	AGS	C2'-C3'	-4.41	1.41	1.53
2	B	301	AGS	C2'-C3'	-4.38	1.41	1.53
5	B	303	FLC	CA-CB	-3.41	1.49	1.54
5	D	302	FLC	CG-CB	-3.31	1.49	1.54
5	D	303	FLC	CG-CB	-3.31	1.49	1.54
5	B	304	FLC	CA-CB	-3.11	1.50	1.54
5	D	302	FLC	CA-CB	-3.10	1.50	1.54
5	B	304	FLC	CG-CB	-2.96	1.50	1.54
5	B	303	FLC	CG-CB	-2.85	1.50	1.54
5	B	303	FLC	OHB-CB	-2.83	1.38	1.43
2	B	301	AGS	O4'-C4'	-2.79	1.38	1.45
5	D	303	FLC	CA-CB	-2.77	1.50	1.54
5	B	304	FLC	OHB-CB	-2.59	1.38	1.43
5	D	302	FLC	OHB-CB	-2.52	1.39	1.43
2	C	301	AGS	O2'-C2'	-2.50	1.37	1.43
2	D	301	AGS	O4'-C4'	-2.49	1.39	1.45
5	D	303	FLC	OHB-CB	-2.44	1.39	1.43
2	A	302	AGS	O4'-C4'	-2.43	1.39	1.45
2	C	301	AGS	O3'-C3'	-2.39	1.37	1.43
2	B	301	AGS	O3'-C3'	-2.34	1.37	1.43
2	D	301	AGS	O3'-C3'	-2.31	1.37	1.43
2	B	301	AGS	O2'-C2'	-2.17	1.37	1.43
2	C	301	AGS	O4'-C4'	-2.10	1.40	1.45
2	A	301	AGS	C2-N3	2.12	1.35	1.32
2	B	302	AGS	C2-N3	2.22	1.36	1.32
2	B	302	AGS	C6-N6	2.57	1.42	1.34
2	A	302	AGS	C6-N6	2.59	1.42	1.34
2	A	301	AGS	C6-N6	2.70	1.43	1.34
2	B	301	AGS	C6-N6	2.75	1.43	1.34
2	C	301	AGS	C6-N6	2.78	1.43	1.34
2	D	301	AGS	C6-N6	2.80	1.43	1.34

All (35) bond angle outliers are listed below:

Mol	Chain	Res	Type	Atoms	Z	Observed(°)	Ideal(°)
2	B	301	AGS	N3-C2-N1	-11.38	120.18	128.89
2	A	302	AGS	N3-C2-N1	-10.77	120.65	128.89
2	C	301	AGS	N3-C2-N1	-10.32	120.99	128.89
2	A	301	AGS	N3-C2-N1	-9.73	121.45	128.89
2	D	301	AGS	N3-C2-N1	-9.71	121.46	128.89

Continued on next page...

Continued from previous page...

Mol	Chain	Res	Type	Atoms	Z	Observed(°)	Ideal(°)
2	B	302	AGS	C1'-N9-C4	-8.36	114.33	126.94
2	D	301	AGS	C1'-N9-C4	-7.25	116.00	126.94
2	C	301	AGS	C1'-N9-C4	-7.23	116.04	126.94
2	B	302	AGS	N3-C2-N1	-6.99	123.55	128.89
2	B	301	AGS	C1'-N9-C4	-6.95	116.46	126.94
2	A	302	AGS	C1'-N9-C4	-6.85	116.60	126.94
2	A	301	AGS	C1'-N9-C4	-6.22	117.56	126.94
2	B	301	AGS	C2'-C1'-N9	-3.00	109.70	114.29
2	A	302	AGS	C4-C5-N7	-3.00	106.72	109.48
2	C	301	AGS	C2'-C1'-N9	-2.77	110.06	114.29
2	D	301	AGS	C4-C5-N7	-2.52	107.16	109.48
2	B	302	AGS	C4-C5-N7	-2.47	107.21	109.48
2	A	301	AGS	C2'-C1'-N9	-2.34	110.71	114.29
2	D	301	AGS	PA-O3A-PB	-2.29	124.99	132.67
2	B	301	AGS	PA-O3A-PB	-2.27	125.05	132.67
2	C	301	AGS	C4-C5-N7	-2.19	107.46	109.48
2	C	301	AGS	PA-O3A-PB	-2.14	125.49	132.67
2	A	302	AGS	O3A-PA-O5'	2.16	108.67	102.94
2	A	301	AGS	O4'-C1'-N9	2.25	112.81	108.10
2	D	301	AGS	O3A-PA-O5'	2.29	109.01	102.94
5	D	302	FLC	CB-CG-CGC	2.34	118.71	114.96
5	D	303	FLC	CB-CA-CAC	2.35	118.72	114.96
2	A	302	AGS	O5'-C5'-C4'	2.39	117.94	109.12
2	C	301	AGS	O5'-C5'-C4'	2.43	118.06	109.12
5	B	304	FLC	CB-CA-CAC	2.59	119.09	114.96
2	C	301	AGS	O3A-PA-O5'	2.76	110.27	102.94
5	B	304	FLC	CB-CG-CGC	2.80	119.43	114.96
5	D	302	FLC	CB-CA-CAC	2.96	119.69	114.96
2	A	301	AGS	O5'-C5'-C4'	3.01	120.21	109.12
5	B	303	FLC	CB-CG-CGC	3.26	120.17	114.96

There are no chirality outliers.

There are no torsion outliers.

There are no ring outliers.

4 monomers are involved in 10 short contacts:

Mol	Chain	Res	Type	Clashes	Symm-Clashes
2	B	302	AGS	5	0
2	C	301	AGS	1	0
2	D	301	AGS	3	0
5	D	302	FLC	1	0

5.7 Other polymers [i](#)

There are no such residues in this entry.

5.8 Polymer linkage issues [i](#)

There are no chain breaks in this entry.

6 Fit of model and data [i](#)

6.1 Protein, DNA and RNA chains [i](#)

In the following table, the column labelled ‘#RSRZ> 2’ contains the number (and percentage) of RSRZ outliers, followed by percent RSRZ outliers for the chain as percentile scores relative to all X-ray entries and entries of similar resolution. The OWAB column contains the minimum, median, 95th percentile and maximum values of the occupancy-weighted average B-factor per residue. The column labelled ‘Q< 0.9’ lists the number of (and percentage) of residues with an average occupancy less than 0.9.

Mol	Chain	Analysed	<RSRZ>	#RSRZ>2		OWAB(Å ²)	Q<0.9
1	A	195/212 (91%)	-0.33	0	100 100	20, 29, 46, 57	0
1	B	197/212 (92%)	-0.30	0	100 100	18, 28, 48, 68	0
1	C	204/212 (96%)	-0.22	1 (0%)	91 92	24, 37, 51, 69	0
1	D	194/212 (91%)	0.06	3 (1%)	76 78	24, 42, 59, 69	0
All	All	790/848 (93%)	-0.20	4 (0%)	91 92	18, 34, 53, 69	0

All (4) RSRZ outliers are listed below:

Mol	Chain	Res	Type	RSRZ
1	C	1	MET	3.6
1	D	58	THR	3.0
1	D	160	ARG	2.7
1	D	106	TYR	2.2

6.2 Non-standard residues in protein, DNA, RNA chains [i](#)

There are no non-standard protein/DNA/RNA residues in this entry.

6.3 Carbohydrates [i](#)

There are no carbohydrates in this entry.

6.4 Ligands [i](#)

In the following table, the Atoms column lists the number of modelled atoms in the group and the number defined in the chemical component dictionary. LLDF column lists the quality of electron density of the group with respect to its neighbouring residues in protein, DNA or RNA chains. The B-factors column lists the minimum, median, 95th percentile and maximum values of B factors

of atoms in the group. The column labelled 'Q< 0.9' lists the number of atoms with occupancy less than 0.9.

Mol	Type	Chain	Res	Atoms	RSCC	RSR	LLDF	B-factors(Å ²)	Q<0.9
5	FLC	B	304	13/13	0.91	0.20	4.19	45,54,61,64	0
2	AGS	B	302	19/31	0.84	0.19	3.56	35,47,58,64	0
5	FLC	D	302	13/13	0.90	0.18	2.14	42,49,57,59	0
2	AGS	A	301	23/31	0.90	0.14	0.84	28,47,79,98	0
2	AGS	D	301	27/31	0.96	0.17	0.01	38,55,59,67	0
2	AGS	A	302	27/31	0.98	0.10	-0.35	19,27,37,43	0
3	MG	B	305	1/1	0.75	0.10	-0.77	51,51,51,51	0
2	AGS	C	301	27/31	0.98	0.10	-0.82	21,29,35,43	0
2	AGS	B	301	27/31	0.98	0.09	-0.92	22,26,32,37	0
5	FLC	D	303	13/13	0.95	0.11	-1.34	32,37,43,43	0
6	ZN	B	308	1/1	0.97	0.06	-1.53	49,49,49,49	1
4	CL	B	309	1/1	0.99	0.09	-2.16	32,32,32,32	0
5	FLC	B	303	13/13	0.96	0.09	-2.41	28,32,36,41	0
3	MG	D	306	1/1	0.82	0.10	-3.13	46,46,46,46	0
4	CL	A	304	1/1	0.99	0.07	-3.44	28,28,28,28	0
6	ZN	C	303	1/1	0.96	0.05	-4.39	42,42,42,42	0
3	MG	B	306	1/1	0.88	0.07	-4.96	34,34,34,34	0
3	MG	C	302	1/1	0.95	0.08	-	26,26,26,26	0
3	MG	D	305	1/1	0.93	0.07	-	49,49,49,49	0
3	MG	D	304	1/1	0.95	0.09	-	36,36,36,36	0
3	MG	B	307	1/1	0.90	0.05	-	32,32,32,32	0
3	MG	A	303	1/1	0.95	0.08	-	28,28,28,28	0

6.5 Other polymers [i](#)

There are no such residues in this entry.