



# Full wwPDB X-ray Structure Validation Report ⓘ

Nov 14, 2016 – 08:47 AM EST

PDB ID : 5KF7  
Title : Structure of proline utilization A from Sinorhizobium meliloti complexed with L-tetrahydrofuroic acid and NAD<sup>+</sup> in space group P3121  
Authors : Tanner, J.J.  
Deposited on : 2016-06-12  
Resolution : 1.90 Å(reported)

This is a Full wwPDB X-ray Structure Validation Report for a publicly released PDB entry.

We welcome your comments at [validation@mail.wwpdb.org](mailto:validation@mail.wwpdb.org)

A user guide is available at

<http://wwpdb.org/validation/2016/XrayValidationReportHelp>

with specific help available everywhere you see the ⓘ symbol.

---

The following versions of software and data (see [references ⓘ](#)) were used in the production of this report:

MolProbity : 4.02b-467  
Mogul : 1.7.1 (RC1), CSD as537be (2016)  
Xtriage (Phenix) : 1.9-1692  
EDS : rb-20028320  
Percentile statistics : 20151230.v01 (using entries in the PDB archive December 30th 2015)  
Refmac : 5.8.0135  
CCP4 : 6.5.0  
Ideal geometry (proteins) : Engh & Huber (2001)  
Ideal geometry (DNA, RNA) : Parkinson et al. (1996)  
Validation Pipeline (wwPDB-VP) : rb-20028320

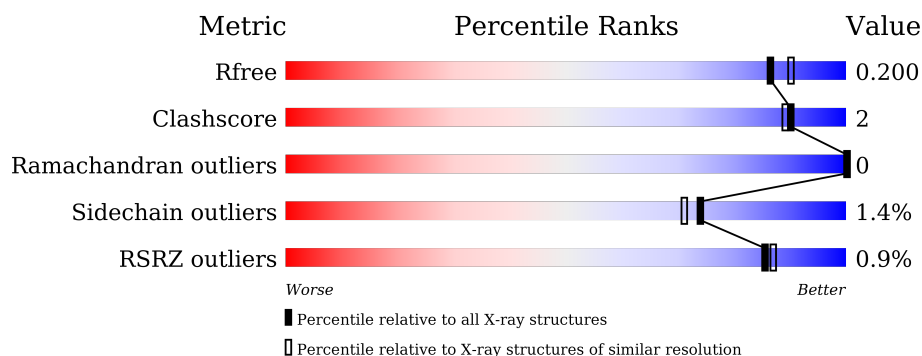
# 1 Overall quality at a glance

The following experimental techniques were used to determine the structure:

*X-RAY DIFFRACTION*

The reported resolution of this entry is 1.90 Å.

Percentile scores (ranging between 0-100) for global validation metrics of the entry are shown in the following graphic. The table shows the number of entries on which the scores are based.



Metric	Whole archive (#Entries)	Similar resolution (#Entries, resolution range(Å))
$R_{free}$	91344	4755 (1.90-1.90)
Clashscore	102246	5398 (1.90-1.90)
Ramachandran outliers	100387	5338 (1.90-1.90)
Sidechain outliers	100360	5339 (1.90-1.90)
RSRZ outliers	91569	4766 (1.90-1.90)

The table below summarises the geometric issues observed across the polymeric chains and their fit to the electron density. The red, orange, yellow and green segments on the lower bar indicate the fraction of residues that contain outliers for  $\geq 3$ , 2, 1 and 0 types of geometric quality criteria. A grey segment represents the fraction of residues that are not modelled. The numeric value for each fraction is indicated below the corresponding segment, with a dot representing fractions  $\leq 5\%$ . The upper red bar (where present) indicates the fraction of residues that have poor fit to the electron density. The numeric value is given above the bar.

Mol	Chain	Length	Quality of chain
1	A	1235	<div> <div></div> <div>92%</div> <div>6%</div> </div>

The following table lists non-polymeric compounds, carbohydrate monomers and non-standard residues in protein, DNA, RNA chains that are outliers for geometric or electron-density-fit criteria:

Mol	Type	Chain	Res	Chirality	Geometry	Clashes	Electron density
5	PGE	A	2004	-	-	-	X
7	1PE	A	2006	-	-	-	X

*Continued on next page...*

*Continued from previous page...*

Mol	Type	Chain	Res	Chirality	Geometry	Clashes	Electron density
7	1PE	A	2007	-	-	-	X

## 2 Entry composition [i](#)

There are 10 unique types of molecules in this entry. The entry contains 9756 atoms, of which 0 are hydrogens and 0 are deuteriums.

In the tables below, the ZeroOcc column contains the number of atoms modelled with zero occupancy, the AltConf column contains the number of residues with at least one atom in alternate conformation and the Trace column contains the number of residues modelled with at most 2 atoms.

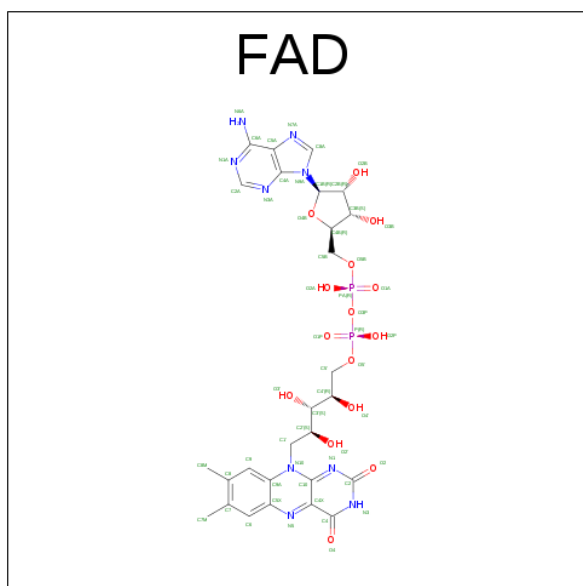
- Molecule 1 is a protein called Bifunctional protein PutA.

Mol	Chain	Residues	Atoms					ZeroOcc	AltConf	Trace
			Total	C	N	O	S			
1	A	1211	9004	5663	1614	1694	33	0	3	0

There are 2 discrepancies between the modelled and reference sequences:

Chain	Residue	Modelled	Actual	Comment	Reference
A	-1	SER	-	expression tag	UNP F7X6I3
A	0	MET	-	expression tag	UNP F7X6I3

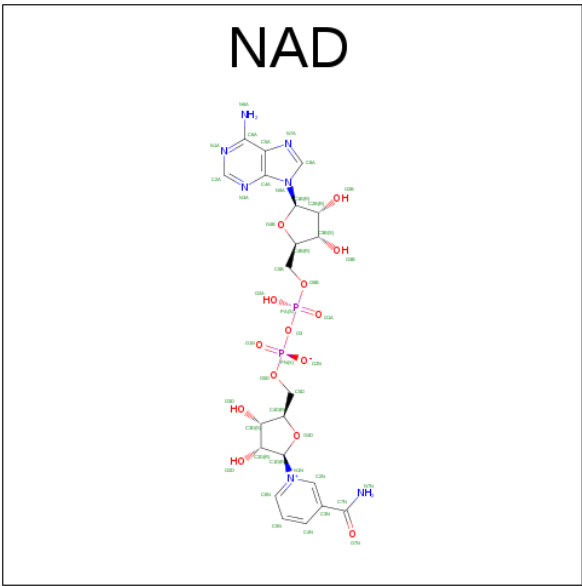
- Molecule 2 is FLAVIN-ADENINE DINUCLEOTIDE (three-letter code: FAD) (formula:  $C_{27}H_{33}N_9O_{15}P_2$ ).



Mol	Chain	Residues	Atoms					ZeroOcc	AltConf
			Total	C	N	O	P		
2	A	1	53	27	9	15	2	0	0

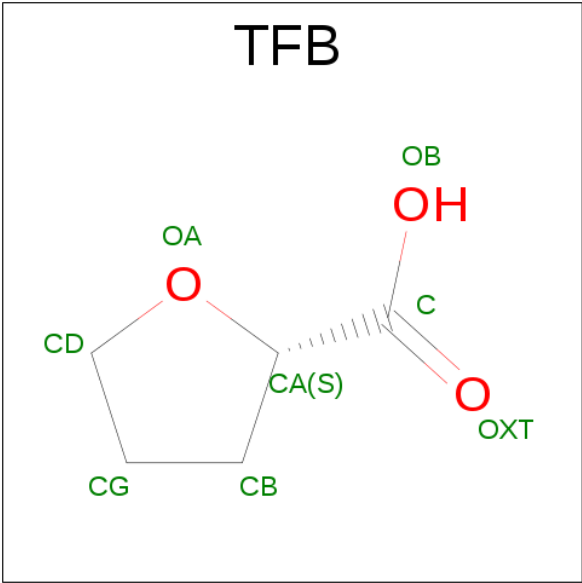
- Molecule 3 is NICOTINAMIDE-ADENINE-DINUCLEOTIDE (three-letter code: NAD)

(formula: C<sub>21</sub>H<sub>27</sub>N<sub>7</sub>O<sub>14</sub>P<sub>2</sub>).



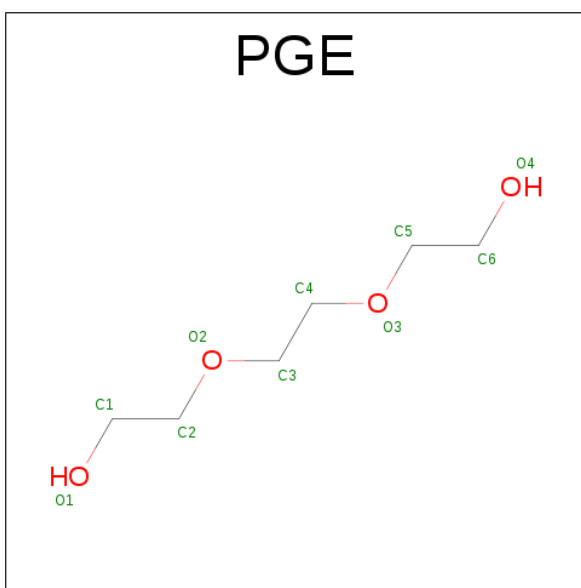
Mol	Chain	Residues	Atoms					ZeroOcc	AltConf
3	A	1	Total	C	N	O	P	0	0
			44	21	7	14	2		

- Molecule 4 is TETRAHYDROFURAN-2-CARBOXYLIC ACID (three-letter code: TFB) (formula: C<sub>5</sub>H<sub>8</sub>O<sub>3</sub>).



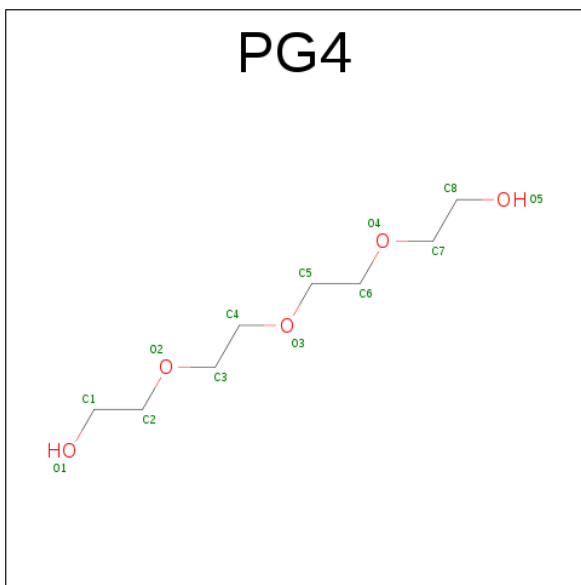
Mol	Chain	Residues	Atoms			ZeroOcc	AltConf
4	A	1	Total	C	O	0	0
			8	5	3		

- Molecule 5 is TRIETHYLENE GLYCOL (three-letter code: PGE) (formula:  $C_6H_{14}O_4$ ).



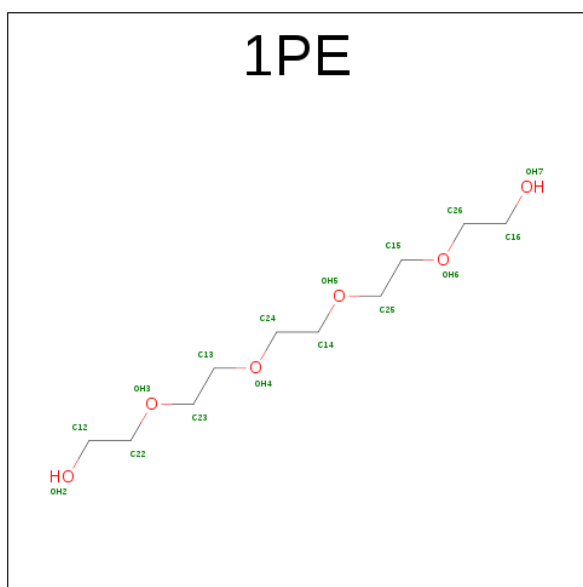
Mol	Chain	Residues	Atoms			ZeroOcc	AltConf
5	A	1	Total	C	O	0	0
			10	6	4		

- Molecule 6 is TETRAETHYLENE GLYCOL (three-letter code: PG4) (formula:  $C_8H_{18}O_5$ ).



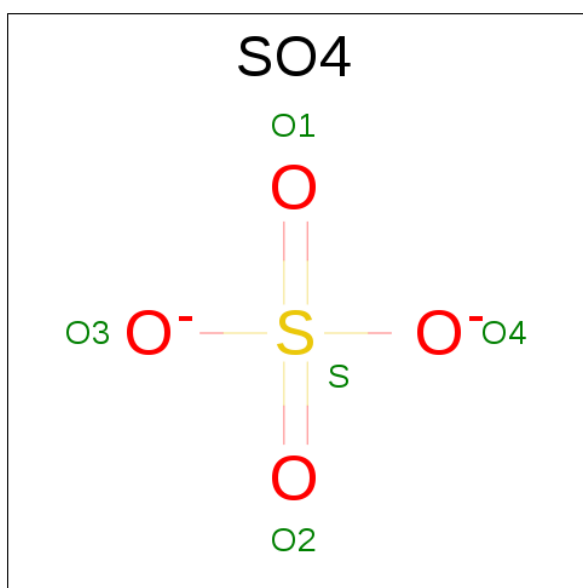
Mol	Chain	Residues	Atoms			ZeroOcc	AltConf
6	A	1	Total	C	O	0	0
			13	8	5		

- Molecule 7 is PENTAETHYLENE GLYCOL (three-letter code: 1PE) (formula:  $C_{10}H_{22}O_6$ ).



Mol	Chain	Residues	Atoms			ZeroOcc	AltConf
7	A	1	Total	C	O	0	0
			7	4	3		
7	A	1	Total	C	O	0	0
			7	4	3		

- Molecule 8 is SULFATE ION (three-letter code: SO4) (formula: O<sub>4</sub>S).



Mol	Chain	Residues	Atoms			ZeroOcc	AltConf
8	A	1	Total	O	S	0	0
			5	4	1		

- Molecule 9 is MAGNESIUM ION (three-letter code: MG) (formula: Mg).

Mol	Chain	Residues	Atoms		ZeroOcc	AltConf
9	A	1	Total 1	Mg 1	0	0

- Molecule 10 is water.

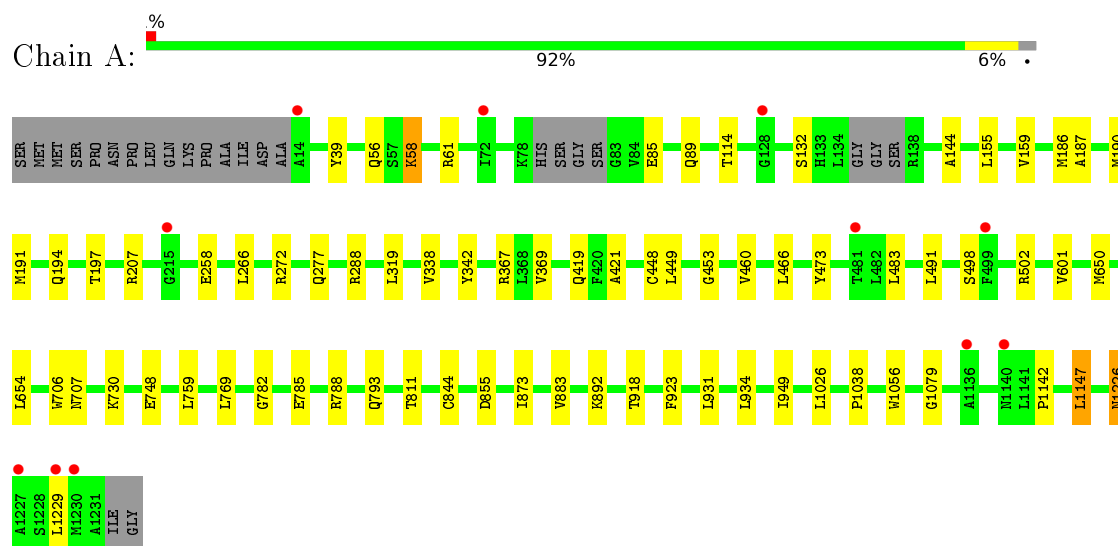
Mol	Chain	Residues	Atoms		ZeroOcc	AltConf
10	A	604	Total 604	O 604	0	0



### 3 Residue-property plots [i](#)

These plots are drawn for all protein, RNA and DNA chains in the entry. The first graphic for a chain summarises the proportions of errors displayed in the second graphic. The second graphic shows the sequence view annotated by issues in geometry and electron density. Residues are color-coded according to the number of geometric quality criteria for which they contain at least one outlier: green = 0, yellow = 1, orange = 2 and red = 3 or more. A red dot above a residue indicates a poor fit to the electron density ( $RSRZ > 2$ ). Stretches of 2 or more consecutive residues without any outlier are shown as a green connector. Residues present in the sample, but not in the model, are shown in grey.

#### • Molecule 1: Bifunctional protein PutA



## 4 Data and refinement statistics

Property	Value	Source
Space group	P 31 2 1	Depositor
Cell constants a, b, c, $\alpha$ , $\beta$ , $\gamma$	128.84Å 128.84Å 150.51Å 90.00° 90.00° 120.00°	Depositor
Resolution (Å)	62.39 – 1.90 62.39 – 1.90	Depositor EDS
% Data completeness (in resolution range)	99.8 (62.39-1.90) 99.8 (62.39-1.90)	Depositor EDS
$R_{merge}$	0.11	Depositor
$R_{sym}$	(Not available)	Depositor
$\langle I/\sigma(I) \rangle$ <sup>1</sup>	1.18 (at 1.90Å)	Xtriage
Refinement program	PHENIX	Depositor
R, $R_{free}$	0.174 , 0.203 0.170 , 0.200	Depositor DCC
$R_{free}$ test set	5644 reflections (4.97%)	DCC
Wilson B-factor (Å <sup>2</sup> )	23.3	Xtriage
Anisotropy	0.414	Xtriage
Bulk solvent $k_{sol}$ (e/Å <sup>3</sup> ), $B_{sol}$ (Å <sup>2</sup> )	0.34 , 48.5	EDS
L-test for twinning <sup>2</sup>	$\langle  L  \rangle = 0.49$ , $\langle L^2 \rangle = 0.32$	Xtriage
Estimated twinning fraction	0.022 for -h,-k,l	Xtriage
$F_o, F_c$ correlation	0.96	EDS
Total number of atoms	9756	wwPDB-VP
Average B, all atoms (Å <sup>2</sup> )	32.0	wwPDB-VP

Xtriage's analysis on translational NCS is as follows: *The largest off-origin peak in the Patterson function is 3.09% of the height of the origin peak. No significant pseudotranslation is detected.*

<sup>1</sup>Intensities estimated from amplitudes.

<sup>2</sup>Theoretical values of  $\langle |L| \rangle$ ,  $\langle L^2 \rangle$  for acentric reflections are 0.5, 0.333 respectively for untwinned datasets, and 0.375, 0.2 for perfectly twinned datasets.

## 5 Model quality [i](#)

### 5.1 Standard geometry [i](#)

Bond lengths and bond angles in the following residue types are not validated in this section: MG, PGE, NAD, 1PE, PG4, SO4, TFB, FAD

The Z score for a bond length (or angle) is the number of standard deviations the observed value is removed from the expected value. A bond length (or angle) with  $|Z| > 5$  is considered an outlier worth inspection. RMSZ is the root-mean-square of all Z scores of the bond lengths (or angles).

Mol	Chain	Bond lengths		Bond angles	
		RMSZ	$\# Z  > 5$	RMSZ	$\# Z  > 5$
1	A	0.36	0/9170	0.52	1/12479 (0.0%)

There are no bond length outliers.

All (1) bond angle outliers are listed below:

Mol	Chain	Res	Type	Atoms	Z	Observed( $^{\circ}$ )	Ideal( $^{\circ}$ )
1	A	1147	LEU	CA-CB-CG	6.48	130.20	115.30

There are no chirality outliers.

There are no planarity outliers.

### 5.2 Too-close contacts [i](#)

In the following table, the Non-H and H(model) columns list the number of non-hydrogen atoms and hydrogen atoms in the chain respectively. The H(added) column lists the number of hydrogen atoms added and optimized by MolProbity. The Clashes column lists the number of clashes within the asymmetric unit, whereas Symm-Clashes lists symmetry related clashes.

Mol	Chain	Non-H	H(model)	H(added)	Clashes	Symm-Clashes
1	A	9004	0	9032	38	1
2	A	53	0	31	5	0
3	A	44	0	26	2	0
4	A	8	0	7	0	0
5	A	10	0	14	2	0
6	A	13	0	18	0	0
7	A	14	0	16	2	0
8	A	5	0	0	0	0
9	A	1	0	0	0	0
10	A	604	0	0	4	0

*Continued on next page...*

*Continued from previous page...*

Mol	Chain	Non-H	H(model)	H(added)	Clashes	Symm-Clashes
All	All	9756	0	9144	42	1

The all-atom clashscore is defined as the number of clashes found per 1000 atoms (including hydrogen atoms). The all-atom clashscore for this structure is 2.

All (42) close contacts within the same asymmetric unit are listed below, sorted by their clash magnitude.

Atom-1	Atom-2	Interatomic distance (Å)	Clash overlap (Å)
1:A:1079:GLY:HA2	5:A:2004:PGE:H2	1.66	0.76
1:A:844:CYS:SG	3:A:2002:NAD:C4N	2.81	0.69
1:A:873:ILE:HG13	1:A:883:VAL:HB	1.78	0.65
1:A:288[B]:ARG:NE	10:A:2101:HOH:O	2.33	0.60
1:A:56:GLN:O	1:A:61:ARG:NH2	2.36	0.58
1:A:85:GLU:O	1:A:89:GLN:HG2	2.02	0.58
1:A:449:LEU:HG	2:A:2001:FAD:HM82	1.87	0.57
1:A:144:ALA:HB3	1:A:159:VAL:HG11	1.90	0.54
1:A:759:LEU:HD13	1:A:769:LEU:HD21	1.91	0.52
1:A:650:MET:O	1:A:654:LEU:HG	2.11	0.50
1:A:793:GLN:HG2	10:A:2190:HOH:O	2.13	0.49
1:A:155:LEU:HD22	1:A:491:LEU:HD21	1.96	0.47
1:A:1079:GLY:HA2	5:A:2004:PGE:C2	2.39	0.46
1:A:421:ALA:HB1	2:A:2001:FAD:C8	2.46	0.46
1:A:460:VAL:HG22	1:A:466:LEU:HD12	1.97	0.46
7:A:2007:1PE:H242	7:A:2007:1PE:H232	1.55	0.45
1:A:266:LEU:HD13	1:A:319:LEU:HD13	1.99	0.45
1:A:473:TYR:HB2	2:A:2001:FAD:HM72	1.98	0.44
1:A:272:ARG:HB3	1:A:277:GLN:HG3	1.99	0.44
1:A:1226:ASN:HB3	1:A:1229:LEU:HB2	2.00	0.44
1:A:918:THR:HB	1:A:923:PHE:CD1	2.53	0.44
1:A:448:CYS:HB2	1:A:453:GLY:HA3	2.00	0.43
1:A:58:LYS:HD2	1:A:61:ARG:NH1	2.33	0.43
1:A:197:THR:O	1:A:207:ARG:HD2	2.18	0.43
1:A:187:ALA:O	1:A:191:MET:HG3	2.19	0.43
1:A:1056:TRP:CD1	1:A:1142:PRO:HD3	2.54	0.43
1:A:931:LEU:HB2	1:A:949:ILE:HG22	2.00	0.42
1:A:449:LEU:HD23	1:A:473:TYR:HB3	2.00	0.42
1:A:498:SER:O	1:A:502:ARG:HG3	2.19	0.42
2:A:2001:FAD:H4'	2:A:2001:FAD:H1'1	1.83	0.42
1:A:782:GLY:O	1:A:811:THR:HA	2.19	0.42
1:A:1026:LEU:HD23	1:A:1038:PRO:HG2	2.01	0.42
2:A:2001:FAD:H9	2:A:2001:FAD:H1'1	1.86	0.42

*Continued on next page...*

Continued from previous page...

Atom-1	Atom-2	Interatomic distance (Å)	Clash overlap (Å)
1:A:706:TRP:CE3	1:A:707:ASN:HA	2.54	0.42
1:A:785:GLU:OE1	1:A:785:GLU:N	2.48	0.42
1:A:601:VAL:HG12	7:A:2006:1PE:H231	2.01	0.41
1:A:367:ARG:HA	1:A:419:GLN:HB2	2.02	0.41
3:A:2002:NAD:H8A	10:A:2623:HOH:O	2.18	0.41
1:A:186:MET:O	1:A:190:MET:HG3	2.20	0.40
1:A:338:VAL:HG22	1:A:367:ARG:HB3	2.02	0.40
1:A:369:VAL:HG12	1:A:421:ALA:HB3	2.02	0.40
1:A:892:LYS:NZ	10:A:2120:HOH:O	2.50	0.40

All (1) symmetry-related close contacts are listed below. The label for Atom-2 includes the symmetry operator and encoded unit-cell translations to be applied.

Atom-1	Atom-2	Interatomic distance (Å)	Clash overlap (Å)
1:A:114:THR:N	1:A:748:GLU:OE1[6_655]	2.17	0.03

## 5.3 Torsion angles ⓘ

### 5.3.1 Protein backbone ⓘ

In the following table, the Percentiles column shows the percent Ramachandran outliers of the chain as a percentile score with respect to all X-ray entries followed by that with respect to entries of similar resolution.

The Analysed column shows the number of residues for which the backbone conformation was analysed, and the total number of residues.

Mol	Chain	Analysed	Favoured	Allowed	Outliers	Percentiles	
1	A	1208/1235 (98%)	1188 (98%)	20 (2%)	0	100	100

There are no Ramachandran outliers to report.

### 5.3.2 Protein sidechains ⓘ

In the following table, the Percentiles column shows the percent sidechain outliers of the chain as a percentile score with respect to all X-ray entries followed by that with respect to entries of similar resolution.

The Analysed column shows the number of residues for which the sidechain conformation was analysed, and the total number of residues.

Mol	Chain	Analysed	Rotameric	Outliers	Percentiles	
1	A	908/951 (96%)	895 (99%)	13 (1%)	74	71

All (13) residues with a non-rotameric sidechain are listed below:

Mol	Chain	Res	Type
1	A	39	TYR
1	A	58	LYS
1	A	132	SER
1	A	194	GLN
1	A	258	GLU
1	A	342	TYR
1	A	483	LEU
1	A	730	LYS
1	A	788	ARG
1	A	855	ASP
1	A	934	LEU
1	A	1147	LEU
1	A	1226	ASN

Some sidechains can be flipped to improve hydrogen bonding and reduce clashes. All (5) such sidechains are listed below:

Mol	Chain	Res	Type
1	A	96	GLN
1	A	304	ASN
1	A	1040	GLN
1	A	1140	ASN
1	A	1226	ASN

### 5.3.3 RNA ⓘ

There are no RNA molecules in this entry.

## 5.4 Non-standard residues in protein, DNA, RNA chains ⓘ

There are no non-standard protein/DNA/RNA residues in this entry.

## 5.5 Carbohydrates ⓘ

There are no carbohydrates in this entry.

## 5.6 Ligand geometry ⓘ

Of 9 ligands modelled in this entry, 1 is monoatomic - leaving 8 for Mogul analysis.

In the following table, the Counts columns list the number of bonds (or angles) for which Mogul statistics could be retrieved, the number of bonds (or angles) that are observed in the model and the number of bonds (or angles) that are defined in the chemical component dictionary. The Link column lists molecule types, if any, to which the group is linked. The Z score for a bond length (or angle) is the number of standard deviations the observed value is removed from the expected value. A bond length (or angle) with  $|Z| > 2$  is considered an outlier worth inspection. RMSZ is the root-mean-square of all Z scores of the bond lengths (or angles).

Mol	Type	Chain	Res	Link	Bond lengths			Bond angles		
					Counts	RMSZ	# Z  > 2	Counts	RMSZ	# Z  > 2
2	FAD	A	2001	-	52,58,58	2.02	16 (30%)	52,89,89	2.28	12 (23%)
3	NAD	A	2002	9	42,48,48	1.77	9 (21%)	46,73,73	2.05	6 (13%)
4	TFB	A	2003	-	5,8,8	2.17	1 (20%)	2,10,10	0.42	0
5	PGE	A	2004	-	9,9,9	0.64	0	8,8,8	0.92	0
6	PG4	A	2005	-	12,12,12	0.65	0	11,11,11	0.71	0
7	1PE	A	2006	-	6,6,15	0.63	0	5,5,14	0.78	0
7	1PE	A	2007	-	6,6,15	0.46	0	5,5,14	0.87	0
8	SO4	A	2008	-	4,4,4	0.44	0	6,6,6	0.21	0

In the following table, the Chirals column lists the number of chiral outliers, the number of chiral centers analysed, the number of these observed in the model and the number defined in the chemical component dictionary. Similar counts are reported in the Torsion and Rings columns. '-' means no outliers of that kind were identified.

Mol	Type	Chain	Res	Link	Chirals	Torsions	Rings
2	FAD	A	2001	-	-	0/30/50/50	0/6/6/6
3	NAD	A	2002	9	-	0/22/62/62	0/5/5/5
4	TFB	A	2003	-	-	0/0/11/11	0/1/1/1
5	PGE	A	2004	-	-	0/7/7/7	0/0/0/0
6	PG4	A	2005	-	-	0/10/10/10	0/0/0/0
7	1PE	A	2006	-	-	0/4/4/13	0/0/0/0
7	1PE	A	2007	-	-	0/4/4/13	0/0/0/0
8	SO4	A	2008	-	-	0/0/0/0	0/0/0/0

All (26) bond length outliers are listed below:

Mol	Chain	Res	Type	Atoms	Z	Observed(Å)	Ideal(Å)
4	A	2003	TFB	CB-CA	-4.42	1.46	1.53
2	A	2001	FAD	C2B-C1B	-3.37	1.48	1.53
3	A	2002	NAD	C2B-C1B	-3.31	1.48	1.53
3	A	2002	NAD	C2D-C1D	-2.56	1.49	1.53

*Continued on next page...*

*Continued from previous page...*

Mol	Chain	Res	Type	Atoms	Z	Observed(Å)	Ideal(Å)
2	A	2001	FAD	O2'-C2'	-2.39	1.38	1.43
2	A	2001	FAD	PA-O2A	-2.36	1.45	1.55
3	A	2002	NAD	PA-O2A	-2.28	1.45	1.55
3	A	2002	NAD	PA-O5B	-2.26	1.49	1.59
2	A	2001	FAD	O3'-C3'	-2.23	1.37	1.43
2	A	2001	FAD	O4'-C4'	-2.13	1.38	1.43
2	A	2001	FAD	O4B-C4B	-2.08	1.40	1.45
3	A	2002	NAD	C6N-N1N	2.21	1.41	1.35
3	A	2002	NAD	C2A-N3A	2.28	1.36	1.32
3	A	2002	NAD	C6A-N6A	2.37	1.43	1.34
2	A	2001	FAD	C2A-N3A	2.42	1.36	1.32
2	A	2001	FAD	C4X-C10	2.60	1.45	1.40
2	A	2001	FAD	C6A-N6A	2.69	1.45	1.34
2	A	2001	FAD	C2-N1	2.86	1.44	1.38
2	A	2001	FAD	C4-N3	3.05	1.38	1.33
2	A	2001	FAD	C9A-N10	3.46	1.43	1.38
2	A	2001	FAD	C5X-N5	3.57	1.40	1.35
2	A	2001	FAD	C4X-N5	4.40	1.40	1.33
2	A	2001	FAD	C4-C4X	4.98	1.51	1.41
3	A	2002	NAD	C7N-N7N	5.14	1.43	1.33
3	A	2002	NAD	C2N-N1N	5.26	1.42	1.35
2	A	2001	FAD	O4-C4	5.42	1.38	1.24

All (18) bond angle outliers are listed below:

Mol	Chain	Res	Type	Atoms	Z	Observed(°)	Ideal(°)
3	A	2002	NAD	N3A-C2A-N1A	-11.20	120.07	128.87
2	A	2001	FAD	N3A-C2A-N1A	-10.88	120.33	128.87
2	A	2001	FAD	C4-C4X-C10	-4.05	117.35	119.94
2	A	2001	FAD	N3-C2-N1	-3.57	121.68	127.69
3	A	2002	NAD	C1B-N9A-C4A	-3.40	123.01	126.81
3	A	2002	NAD	C4B-O4B-C1B	-3.19	106.26	109.64
2	A	2001	FAD	C4X-C4-N3	-2.97	119.64	123.52
2	A	2001	FAD	O2P-P-O3P	-2.33	95.27	105.27
2	A	2001	FAD	O2P-P-O5'	-2.20	97.75	108.24
3	A	2002	NAD	O2A-PA-O5B	-2.05	98.49	108.24
2	A	2001	FAD	O2A-PA-O5B	-2.02	98.59	108.24
3	A	2002	NAD	O4D-C1D-N1N	2.08	110.35	108.10
2	A	2001	FAD	C5X-C9A-N10	2.23	119.25	117.58
3	A	2002	NAD	O2N-PN-O3	2.25	114.91	105.27
2	A	2001	FAD	O5'-P-O1P	2.26	118.45	109.21
2	A	2001	FAD	C4X-N5-C5X	2.86	120.10	116.72

*Continued on next page...*



*Continued from previous page...*

Mol	Chain	Res	Type	Atoms	Z	Observed(°)	Ideal(°)
2	A	2001	FAD	C4-C4X-N5	3.83	123.36	118.70
2	A	2001	FAD	C4-N3-C2	6.49	120.57	115.16

There are no chirality outliers.

There are no torsion outliers.

There are no ring outliers.

5 monomers are involved in 11 short contacts:

Mol	Chain	Res	Type	Clashes	Symm-Clashes
2	A	2001	FAD	5	0
3	A	2002	NAD	2	0
5	A	2004	PGE	2	0
7	A	2006	1PE	1	0
7	A	2007	1PE	1	0

## 5.7 Other polymers [i](#)

There are no such residues in this entry.

## 5.8 Polymer linkage issues [i](#)

There are no chain breaks in this entry.

## 6 Fit of model and data [i](#)

### 6.1 Protein, DNA and RNA chains [i](#)

In the following table, the column labelled ‘#RSRZ> 2’ contains the number (and percentage) of RSRZ outliers, followed by percent RSRZ outliers for the chain as percentile scores relative to all X-ray entries and entries of similar resolution. The OWAB column contains the minimum, median, 95<sup>th</sup> percentile and maximum values of the occupancy-weighted average B-factor per residue. The column labelled ‘Q< 0.9’ lists the number of (and percentage) of residues with an average occupancy less than 0.9.

Mol	Chain	Analysed	<RSRZ>	#RSRZ>2	OWAB(Å <sup>2</sup> )	Q<0.9
1	A	1211/1235 (98%)	-0.26	11 (0%) 85 87	13, 29, 58, 94	0

All (11) RSRZ outliers are listed below:

Mol	Chain	Res	Type	RSRZ
1	A	1227	ALA	4.3
1	A	481	THR	3.2
1	A	128	GLY	3.0
1	A	1140	ASN	3.0
1	A	1230	MET	2.7
1	A	1229	LEU	2.5
1	A	215	GLY	2.5
1	A	14	ALA	2.4
1	A	1136	ALA	2.3
1	A	499	PHE	2.2
1	A	72	ILE	2.2

### 6.2 Non-standard residues in protein, DNA, RNA chains [i](#)

There are no non-standard protein/DNA/RNA residues in this entry.

### 6.3 Carbohydrates [i](#)

There are no carbohydrates in this entry.

### 6.4 Ligands [i](#)

In the following table, the Atoms column lists the number of modelled atoms in the group and the number defined in the chemical component dictionary. LLDF column lists the quality of electron density of the group with respect to its neighbouring residues in protein, DNA or RNA chains.

The B-factors column lists the minimum, median, 95<sup>th</sup> percentile and maximum values of B factors of atoms in the group. The column labelled 'Q< 0.9' lists the number of atoms with occupancy less than 0.9.

Mol	Type	Chain	Res	Atoms	RSCC	RSR	LLDF	B-factors(Å <sup>2</sup> )	Q<0.9
5	PGE	A	2004	10/10	0.89	0.20	6.59	36,41,51,53	0
7	1PE	A	2007	7/16	0.91	0.16	4.66	20,37,46,50	0
7	1PE	A	2006	7/16	0.87	0.13	2.89	48,50,54,59	0
4	TFB	A	2003	8/8	0.95	0.12	1.41	32,37,42,43	0
6	PG4	A	2005	13/13	0.95	0.11	0.71	22,30,53,54	0
2	FAD	A	2001	53/53	0.95	0.10	0.57	19,31,42,45	0
8	SO4	A	2008	5/5	0.99	0.12	0.49	21,21,22,23	0
3	NAD	A	2002	44/44	0.97	0.07	-0.47	15,19,25,29	0
9	MG	A	2009	1/1	0.95	0.19	-	37,37,37,37	0

## 6.5 Other polymers ⓘ

There are no such residues in this entry.