



# Full wwPDB X-ray Structure Validation Report ⓘ

Feb 1, 2016 – 06:05 PM GMT

PDB ID : 4KG5  
Title : Crystal Structure of AmpC beta-lactamase N152G Mutant in Complex with Cefotaxime  
Authors : Docter, B.E.; Baggett, V.L.; Powers, R.A.; Wallar, B.J.  
Deposited on : 2013-04-28  
Resolution : 2.11 Å(reported)

This is a Full wwPDB X-ray Structure Validation Report for a publicly released PDB entry.  
We welcome your comments at [validation@mail.wwpdb.org](mailto:validation@mail.wwpdb.org)  
A user guide is available at  
<http://wwpdb.org/validation/2016/XrayValidationReportHelp>  
with specific help available everywhere you see the ⓘ symbol.

---

The following versions of software and data (see [references ⓘ](#)) were used in the production of this report:

MolProbity : 4.02b-467  
Mogul : 1.7 (RC4), CSD as536be (2015)  
Xtriage (Phenix) : 1.9-1692  
EDS : rb-20026688  
Percentile statistics : 20151230.v01 (using entries in the PDB archive December 30th 2015)  
Refmac : 5.8.0135  
CCP4 : 6.5.0  
Ideal geometry (proteins) : Engh & Huber (2001)  
Ideal geometry (DNA, RNA) : Parkinson et al. (1996)  
Validation Pipeline (wwPDB-VP) : trunk26865

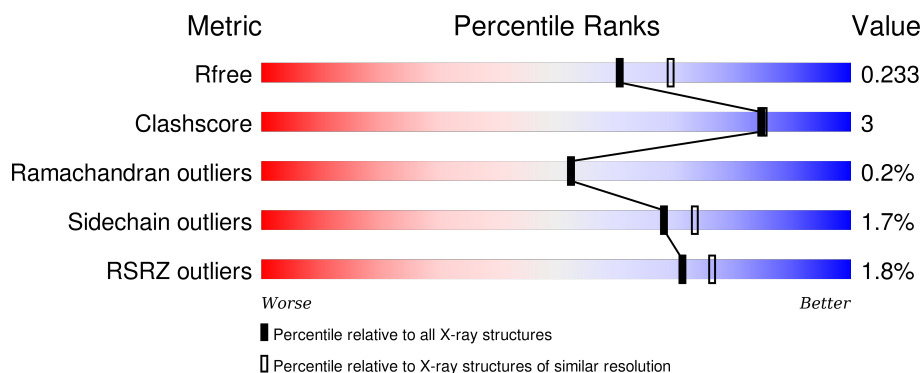
# 1 Overall quality at a glance

The following experimental techniques were used to determine the structure:

## *X-RAY DIFFRACTION*

The reported resolution of this entry is 2.11 Å.

Percentile scores (ranging between 0-100) for global validation metrics of the entry are shown in the following graphic. The table shows the number of entries on which the scores are based.



Metric	Whole archive (#Entries)	Similar resolution (#Entries, resolution range(Å))
$R_{free}$	91344	4587 (2.14-2.10)
Clashscore	102246	5132 (2.14-2.10)
Ramachandran outliers	100387	5080 (2.14-2.10)
Sidechain outliers	100360	5081 (2.14-2.10)
RSRZ outliers	91569	4597 (2.14-2.10)

The table below summarises the geometric issues observed across the polymeric chains and their fit to the electron density. The red, orange, yellow and green segments on the lower bar indicate the fraction of residues that contain outliers for  $\geq 3$ , 2, 1 and 0 types of geometric quality criteria. A grey segment represents the fraction of residues that are not modelled. The numeric value for each fraction is indicated below the corresponding segment, with a dot representing fractions  $\leq 5\%$ . The upper red bar (where present) indicates the fraction of residues that have poor fit to the electron density. The numeric value is given above the bar.

Mol	Chain	Length	Quality of chain
1	A	358	<div> <div>94%</div> <div>6%</div> </div>
1	B	358	<div> <div>92%</div> <div>8%</div> </div>
1	C	358	<div> <div>91%</div> <div>9%</div> </div>
1	D	358	<div> <div>95%</div> <div>5%</div> </div>

The following table lists non-polymeric compounds, carbohydrate monomers and non-standard

residues in protein, DNA, RNA chains that are outliers for geometric or electron-density-fit criteria:

Mol	Type	Chain	Res	Chirality	Geometry	Clashes	Electron density
2	PO4	A	402	-	-	-	X
2	PO4	D	401	-	-	-	X

## 2 Entry composition

There are 4 unique types of molecules in this entry. The entry contains 11765 atoms, of which 0 are hydrogens and 0 are deuteriums.

In the tables below, the ZeroOcc column contains the number of atoms modelled with zero occupancy, the AltConf column contains the number of residues with at least one atom in alternate conformation and the Trace column contains the number of residues modelled with at most 2 atoms.

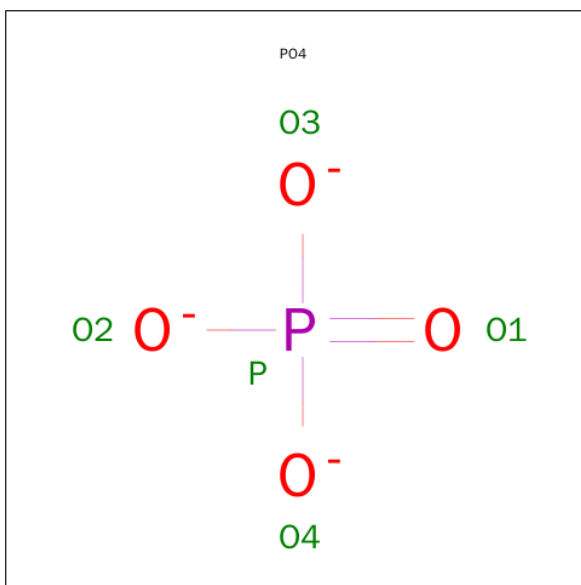
- Molecule 1 is a protein called Beta-lactamase.

Mol	Chain	Residues	Atoms					ZeroOcc	AltConf	Trace
1	B	358	Total	C	N	O	S	0	1	0
			2755	1776	468	505	6			
1	A	358	Total	C	N	O	S	0	5	0
			2803	1801	479	517	6			
1	C	358	Total	C	N	O	S	0	3	0
			2786	1793	472	515	6			
1	D	358	Total	C	N	O	S	0	3	0
			2790	1793	475	516	6			

There are 4 discrepancies between the modelled and reference sequences:

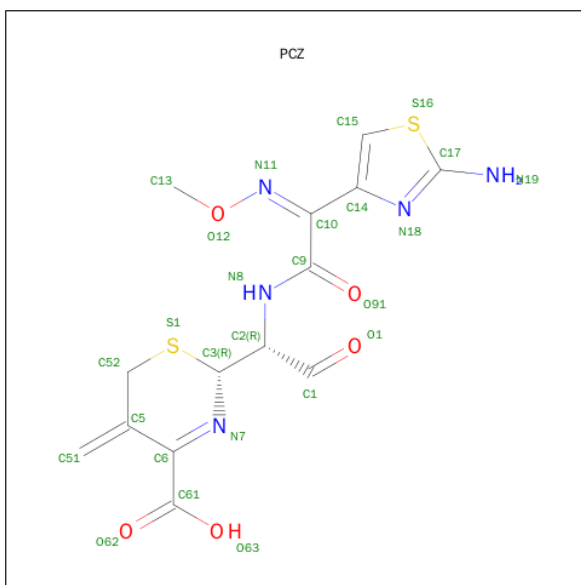
Chain	Residue	Modelled	Actual	Comment	Reference
B	152	GLY	ASN	ENGINEERED MUTATION	UNP P00811
A	152	GLY	ASN	ENGINEERED MUTATION	UNP P00811
C	152	GLY	ASN	ENGINEERED MUTATION	UNP P00811
D	152	GLY	ASN	ENGINEERED MUTATION	UNP P00811

- Molecule 2 is PHOSPHATE ION (three-letter code: PO4) (formula: O<sub>4</sub>P).



Mol	Chain	Residues	Atoms			ZeroOcc	AltConf
2	B	1	Total	O	P	0	0
			5	4	1		
2	A	1	Total	O	P	0	0
			5	4	1		
2	A	1	Total	O	P	0	0
			5	4	1		
2	A	1	Total	O	P	0	0
			5	4	1		
2	D	1	Total	O	P	0	0
			5	4	1		

- Molecule 3 is (2R)-2-[(1R)-1-{[(2Z)-2-(2-AMINO-1,3-THIAZOL-4-YL)-2-(METHOXYIMINO)ACETYL]AMINO}-2-OXOETHYL]-5-METHYLIDENE-5,6-DIHYDRO-2H-1,3-THIAZINE-4-CARBOXYLIC ACID (three-letter code: PCZ) (formula: C<sub>14</sub>H<sub>15</sub>N<sub>5</sub>O<sub>5</sub>S<sub>2</sub>).



Mol	Chain	Residues	Atoms					ZeroOcc	AltConf
3	B	1	Total	C	N	O	S	0	0
			26	14	5	5	2		
3	A	1	Total	C	N	O	S	0	0
			26	14	5	5	2		
3	C	1	Total	C	N	O	S	0	0
			26	14	5	5	2		
3	D	1	Total	C	N	O	S	0	0
			26	14	5	5	2		

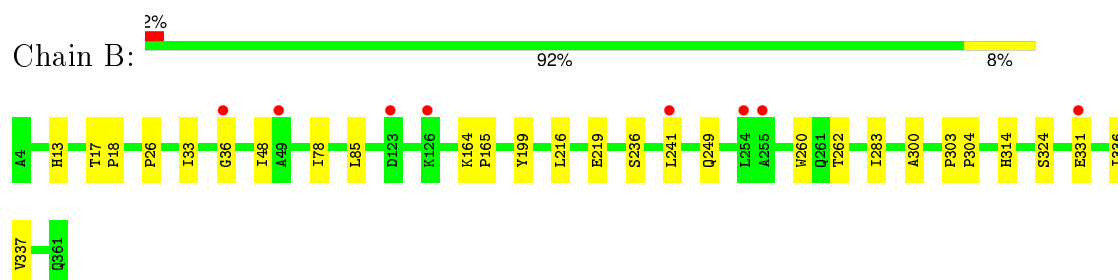
- Molecule 4 is water.

Mol	Chain	Residues	Atoms		ZeroOcc	AltConf
4	B	113	Total	O	0	1
			114	114		
4	A	131	Total	O	0	1
			132	132		
4	C	120	Total	O	0	3
			123	123		
4	D	132	Total	O	0	1
			133	133		

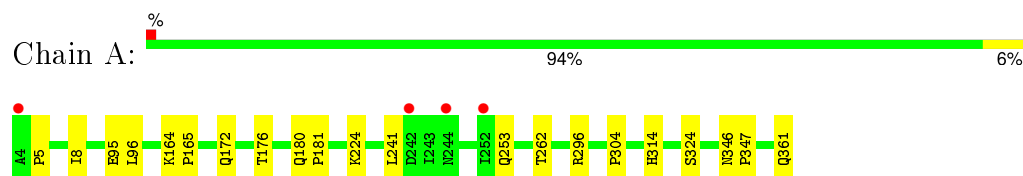
### 3 Residue-property plots [i](#)

These plots are drawn for all protein, RNA and DNA chains in the entry. The first graphic for a chain summarises the proportions of errors displayed in the second graphic. The second graphic shows the sequence view annotated by issues in geometry and electron density. Residues are color-coded according to the number of geometric quality criteria for which they contain at least one outlier: green = 0, yellow = 1, orange = 2 and red = 3 or more. A red dot above a residue indicates a poor fit to the electron density ( $RSRZ > 2$ ). Stretches of 2 or more consecutive residues without any outlier are shown as a green connector. Residues present in the sample, but not in the model, are shown in grey.

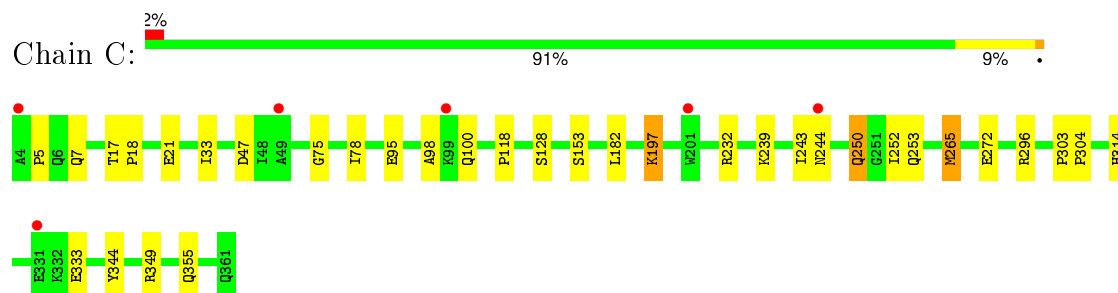
- Molecule 1: Beta-lactamase



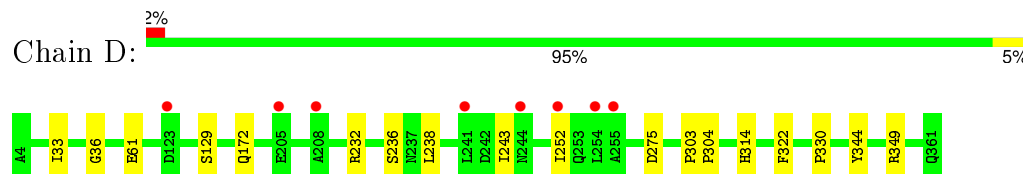
- Molecule 1: Beta-lactamase



- Molecule 1: Beta-lactamase



- Molecule 1: Beta-lactamase



## 4 Data and refinement statistics

Property	Value	Source
Space group	C 1 2 1	Depositor
Cell constants a, b, c, $\alpha$ , $\beta$ , $\gamma$	163.37Å 80.35Å 129.79Å 90.00° 103.99° 90.00°	Depositor
Resolution (Å)	28.23 – 2.11 28.21 – 2.11	Depositor EDS
% Data completeness (in resolution range)	96.8 (28.23-2.11) 96.9 (28.21-2.11)	Depositor EDS
$R_{merge}$	(Not available)	Depositor
$R_{sym}$	(Not available)	Depositor
$\langle I/\sigma(I) \rangle$ <sup>1</sup>	2.53 (at 2.12Å)	Xtriage
Refinement program	REFMAC 5.7.0029	Depositor
R, $R_{free}$	0.179 , 0.232 0.185 , 0.233	Depositor DCC
$R_{free}$ test set	4580 reflections (5.28%)	DCC
Wilson B-factor (Å <sup>2</sup> )	31.7	Xtriage
Anisotropy	0.401	Xtriage
Bulk solvent $k_{sol}$ (e/Å <sup>3</sup> ), $B_{sol}$ (Å <sup>2</sup> )	0.33 , 40.5	EDS
Estimated twinning fraction	No twinning to report.	Xtriage
L-test for twinning <sup>2</sup>	$\langle  L  \rangle = 0.49$ , $\langle L^2 \rangle = 0.33$	Xtriage
Outliers	0 of 91499 reflections	Xtriage
$F_o, F_c$ correlation	0.96	EDS
Total number of atoms	11765	wwPDB-VP
Average B, all atoms (Å <sup>2</sup> )	37.0	wwPDB-VP

Xtriage's analysis on translational NCS is as follows: *The analyses of the Patterson function reveals a significant off-origin peak that is 50.21 % of the origin peak, indicating pseudo translational symmetry. The chance of finding a peak of this or larger height randomly in a structure without pseudo translational symmetry is equal to 6.6803e-05. The detected translational NCS is most likely also responsible for the elevated intensity ratio.*

<sup>1</sup>Intensities estimated from amplitudes.

<sup>2</sup>Theoretical values of  $\langle |L| \rangle$ ,  $\langle L^2 \rangle$  for acentric reflections are 0.5, 0.375 respectively for untwinned datasets, and 0.333, 0.2 for perfectly twinned datasets.

## 5 Model quality [i](#)

### 5.1 Standard geometry [i](#)

Bond lengths and bond angles in the following residue types are not validated in this section: PCZ, PO4

The Z score for a bond length (or angle) is the number of standard deviations the observed value is removed from the expected value. A bond length (or angle) with  $|Z| > 5$  is considered an outlier worth inspection. RMSZ is the root-mean-square of all Z scores of the bond lengths (or angles).

Mol	Chain	Bond lengths		Bond angles	
		RMSZ	# Z  >5	RMSZ	# Z  >5
1	A	0.90	0/2883	0.88	0/3947
1	B	0.85	1/2835 (0.0%)	0.81	0/3883
1	C	0.83	0/2866	0.87	1/3923 (0.0%)
1	D	0.88	0/2870	0.89	1/3929 (0.0%)
All	All	0.87	1/11454 (0.0%)	0.86	2/15682 (0.0%)

All (1) bond length outliers are listed below:

Mol	Chain	Res	Type	Atoms	Z	Observed(Å)	Ideal(Å)
1	B	324	SER	CB-OG	-5.85	1.34	1.42

All (2) bond angle outliers are listed below:

Mol	Chain	Res	Type	Atoms	Z	Observed(°)	Ideal(°)
1	C	47	ASP	CB-CG-OD1	6.95	124.56	118.30
1	D	275	ASP	CB-CG-OD1	6.11	123.79	118.30

There are no chirality outliers.

There are no planarity outliers.

### 5.2 Too-close contacts [i](#)

In the following table, the Non-H and H(model) columns list the number of non-hydrogen atoms and hydrogen atoms in the chain respectively. The H(added) column lists the number of hydrogen atoms added and optimized by MolProbity. The Clashes column lists the number of clashes within the asymmetric unit, whereas Symm-Clashes lists symmetry related clashes.

Mol	Chain	Non-H	H(model)	H(added)	Clashes	Symm-Clashes
1	A	2803	0	2725	15	0

*Continued on next page...*

*Continued from previous page...*

Mol	Chain	Non-H	H(model)	H(added)	Clashes	Symm-Clashes
1	B	2755	0	2680	13	0
1	C	2786	0	2712	25	0
1	D	2790	0	2710	10	0
2	A	15	0	0	0	0
2	B	5	0	0	0	0
2	D	5	0	0	0	0
3	A	26	0	13	2	0
3	B	26	0	13	0	0
3	C	26	0	13	2	0
3	D	26	0	13	2	0
4	A	132	0	0	1	0
4	B	114	0	0	0	0
4	C	123	0	0	5	0
4	D	133	0	0	1	0
All	All	11765	0	10879	64	0

The all-atom clashscore is defined as the number of clashes found per 1000 atoms (including hydrogen atoms). The all-atom clashscore for this structure is 3.

All (64) close contacts within the same asymmetric unit are listed below, sorted by their clash magnitude.

Atom-1	Atom-2	Interatomic distance (Å)	Clash overlap (Å)
1:C:253[B]:GLN:NE2	4:C:592:HOH:O	1.92	1.02
1:C:355[B]:GLN:NE2	4:C:597:HOH:O	1.99	0.94
1:C:296:ARG:HD3	4:C:513:HOH:O	1.92	0.68
1:C:95:GLU:OE2	1:C:95:GLU:N	2.32	0.63
1:D:238:LEU:HD23	1:D:330:PRO:HA	1.83	0.59
1:A:304:PRO:HG2	1:D:303:PRO:HB3	1.85	0.59
1:C:243:ILE:HD12	1:C:252:ILE:HD12	1.86	0.58
1:B:26:PRO:HB3	1:B:48:ILE:HD11	1.86	0.58
3:D:402:PCZ:H15	3:D:402:PCZ:O91	2.04	0.58
1:D:344:TYR:CZ	1:D:349:ARG:HG2	2.38	0.58
1:D:243:ILE:CD1	1:D:252:ILE:HD12	2.34	0.57
3:C:401:PCZ:H15	3:C:401:PCZ:O91	2.04	0.57
1:C:5:PRO:HB2	1:C:7:GLN:NE2	2.20	0.57
1:A:172:GLN:O	1:A:176:THR:HG23	2.03	0.56
3:A:404:PCZ:H522	3:A:404:PCZ:O12	2.07	0.54
1:C:33:ILE:HD12	1:C:33:ILE:N	2.22	0.53
1:A:262:THR:HG21	1:A:296[A]:ARG:CB	2.39	0.53
1:C:344:TYR:CE2	1:C:349:ARG:HG2	2.44	0.52
1:C:265:MET:CE	1:C:272:GLU:HB3	2.41	0.51

*Continued on next page...*

*Continued from previous page...*

Atom-1	Atom-2	Interatomic distance (Å)	Clash overlap (Å)
1:A:164:LYS:HB2	1:A:165:PRO:HD3	1.93	0.51
1:C:197:LYS:HE2	4:C:543:HOH:O	2.10	0.51
1:B:164:LYS:HB2	1:B:165:PRO:HD3	1.93	0.50
1:B:304:PRO:HD2	1:C:304:PRO:HD2	1.94	0.50
1:A:296[A]:ARG:NH2	4:A:595:HOH:O	2.44	0.50
1:D:172:GLN:NE2	4:D:608:HOH:O	2.41	0.50
1:B:304:PRO:HG2	1:C:303:PRO:HB3	1.94	0.49
1:C:239:LYS:HD2	1:C:333:GLU:OE2	2.13	0.48
1:C:265:MET:HE3	1:C:272:GLU:HB3	1.96	0.48
1:C:244:ASN:HD22	1:C:244:ASN:N	2.12	0.47
3:D:402:PCZ:O91	3:D:402:PCZ:C15	2.62	0.47
1:A:180:GLN:HB2	1:A:181:PRO:HD3	1.96	0.47
1:B:304:PRO:HG2	1:C:303:PRO:CB	2.44	0.47
1:B:17:THR:HB	1:B:18:PRO:HD3	1.98	0.46
1:C:5:PRO:CB	1:C:7:GLN:HE22	2.29	0.45
1:A:95:GLU:N	1:A:95:GLU:OE1	2.39	0.45
1:B:33:ILE:HD12	1:B:33:ILE:N	2.32	0.44
3:C:401:PCZ:C15	3:C:401:PCZ:O91	2.61	0.43
1:D:33:ILE:HD12	1:D:33:ILE:N	2.34	0.43
1:B:78:ILE:HD11	1:B:85:LEU:HG	2.01	0.43
1:A:262:THR:HG21	1:A:296[B]:ARG:CB	2.49	0.43
1:A:304:PRO:HD2	1:D:304:PRO:HD2	2.00	0.43
1:A:346:ASN:HB2	1:A:347:PRO:HD3	2.00	0.43
1:D:61:GLU:HB2	1:D:322:PHE:CD1	2.54	0.43
1:C:182:LEU:O	1:C:232:ARG:HD3	2.18	0.42
1:B:260:TRP:CE3	1:B:300:ALA:HA	2.55	0.42
1:A:241:LEU:HD21	1:A:253[B]:GLN:NE2	2.35	0.42
1:A:262:THR:HG21	1:A:296[A]:ARG:HB2	2.00	0.42
1:C:118:PRO:HD2	1:C:153:SER:OG	2.20	0.42
1:C:98:ALA:HB1	1:C:100:GLN:OE1	2.19	0.42
1:D:238:LEU:CD2	1:D:330:PRO:HA	2.48	0.42
1:C:243:ILE:CD1	1:C:252:ILE:HD12	2.50	0.41
3:A:404:PCZ:O91	3:A:404:PCZ:H15	2.19	0.41
1:B:216:LEU:HA	1:B:219:GLU:OE1	2.21	0.41
1:C:75:GLY:HA2	1:C:78:ILE:HD12	2.03	0.41
1:B:241:LEU:HD23	1:B:249:GLN:NE2	2.36	0.41
1:C:17:THR:HB	1:C:18:PRO:HD3	2.04	0.41
1:B:283:ILE:HD13	1:B:283:ILE:HG21	1.79	0.40
1:B:336:ILE:HG12	1:B:337:VAL:N	2.36	0.40
1:A:224:LYS:HD2	1:A:224:LYS:N	2.37	0.40
1:A:96:LEU:HD12	1:A:96:LEU:HA	1.89	0.40

*Continued on next page...*

Continued from previous page...

Atom-1	Atom-2	Interatomic distance (Å)	Clash overlap (Å)
1:C:250:GLN:HG2	4:C:592:HOH:O	2.22	0.40
1:D:243:ILE:HD12	1:D:252:ILE:HD12	2.01	0.40
1:C:5:PRO:HB3	1:C:7:GLN:HE22	1.87	0.40
1:A:5:PRO:HD2	1:A:8:ILE:HD12	2.03	0.40

There are no symmetry-related clashes.

## 5.3 Torsion angles [i](#)

### 5.3.1 Protein backbone [i](#)

In the following table, the Percentiles column shows the percent Ramachandran outliers of the chain as a percentile score with respect to all X-ray entries followed by that with respect to entries of similar resolution.

The Analysed column shows the number of residues for which the backbone conformation was analysed, and the total number of residues.

Mol	Chain	Analysed	Favoured	Allowed	Outliers	Percentiles	
1	A	361/358 (101%)	351 (97%)	10 (3%)	0	100	100
1	B	357/358 (100%)	349 (98%)	6 (2%)	2 (1%)	30	24
1	C	359/358 (100%)	351 (98%)	8 (2%)	0	100	100
1	D	359/358 (100%)	348 (97%)	10 (3%)	1 (0%)	46	44
All	All	1436/1432 (100%)	1399 (97%)	34 (2%)	3 (0%)	52	52

All (3) Ramachandran outliers are listed below:

Mol	Chain	Res	Type
1	B	331	GLU
1	D	36	GLY
1	B	36	GLY

### 5.3.2 Protein sidechains [i](#)

In the following table, the Percentiles column shows the percent sidechain outliers of the chain as a percentile score with respect to all X-ray entries followed by that with respect to entries of similar resolution.

The Analysed column shows the number of residues for which the sidechain conformation was

analysed, and the total number of residues.

Mol	Chain	Analysed	Rotameric	Outliers	Percentiles	
1	A	286/291 (98%)	283 (99%)	3 (1%)	82	86
1	B	279/291 (96%)	273 (98%)	6 (2%)	60	63
1	C	285/291 (98%)	279 (98%)	6 (2%)	61	65
1	D	285/291 (98%)	281 (99%)	4 (1%)	74	79
All	All	1135/1164 (98%)	1116 (98%)	19 (2%)	68	73

All (19) residues with a non-rotameric sidechain are listed below:

Mol	Chain	Res	Type
1	B	13	HIS
1	B	199	TYR
1	B	236	SER
1	B	262	THR
1	B	303	PRO
1	B	314	HIS
1	A	314	HIS
1	A	324	SER
1	A	361	GLN
1	C	21	GLU
1	C	128	SER
1	C	197	LYS
1	C	250	GLN
1	C	265	MET
1	C	314	HIS
1	D	129	SER
1	D	232	ARG
1	D	236	SER
1	D	314	HIS

Some sidechains can be flipped to improve hydrogen bonding and reduce clashes. All (5) such sidechains are listed below:

Mol	Chain	Res	Type
1	B	249	GLN
1	C	57	GLN
1	C	198	ASN
1	C	244	ASN
1	D	190	ASN

### 5.3.3 RNA ⓘ

There are no RNA molecules in this entry.

## 5.4 Non-standard residues in protein, DNA, RNA chains ⓘ

There are no non-standard protein/DNA/RNA residues in this entry.

## 5.5 Carbohydrates ⓘ

There are no carbohydrates in this entry.

## 5.6 Ligand geometry ⓘ

9 ligands are modelled in this entry.

In the following table, the Counts columns list the number of bonds (or angles) for which Mogul statistics could be retrieved, the number of bonds (or angles) that are observed in the model and the number of bonds (or angles) that are defined in the chemical component dictionary. The Link column lists molecule types, if any, to which the group is linked. The Z score for a bond length (or angle) is the number of standard deviations the observed value is removed from the expected value. A bond length (or angle) with  $|Z| > 2$  is considered an outlier worth inspection. RMSZ is the root-mean-square of all Z scores of the bond lengths (or angles).

Mol	Type	Chain	Res	Link	Bond lengths			Bond angles		
					Counts	RMSZ	$\# Z  > 2$	Counts	RMSZ	$\# Z  > 2$
2	PO4	A	401	-	4,4,4	0.41	0	6,6,6	0.33	0
2	PO4	A	402	-	4,4,4	0.48	0	6,6,6	0.29	0
2	PO4	A	403	-	4,4,4	0.28	0	6,6,6	0.32	0
3	PCZ	A	404	1	16,27,27	2.23	4 (25%)	12,37,37	6.09	5 (41%)
2	PO4	B	401	-	4,4,4	0.29	0	6,6,6	0.37	0
3	PCZ	B	402	1	16,27,27	2.32	6 (37%)	12,37,37	5.91	4 (33%)
3	PCZ	C	401	1	16,27,27	2.01	2 (12%)	12,37,37	5.15	5 (41%)
2	PO4	D	401	-	4,4,4	0.33	0	6,6,6	0.31	0
3	PCZ	D	402	1	16,27,27	2.37	4 (25%)	12,37,37	5.70	4 (33%)

In the following table, the Chirals column lists the number of chiral outliers, the number of chiral centers analysed, the number of these observed in the model and the number defined in the chemical component dictionary. Similar counts are reported in the Torsion and Rings columns. '-' means no outliers of that kind were identified.

Mol	Type	Chain	Res	Link	Chirals	Torsions	Rings
2	PO4	A	401	-	-	0/0/0/0	0/0/0/0
2	PO4	A	402	-	-	0/0/0/0	0/0/0/0
2	PO4	A	403	-	-	0/0/0/0	0/0/0/0
3	PCZ	A	404	1	-	0/10/38/38	0/1/2/2
2	PO4	B	401	-	-	0/0/0/0	0/0/0/0
3	PCZ	B	402	1	-	0/10/38/38	0/1/2/2
3	PCZ	C	401	1	-	0/10/38/38	0/1/2/2
2	PO4	D	401	-	-	0/0/0/0	0/0/0/0
3	PCZ	D	402	1	-	0/10/38/38	0/1/2/2

All (16) bond length outliers are listed below:

Mol	Chain	Res	Type	Atoms	Z	Observed(Å)	Ideal(Å)
3	B	402	PCZ	O12-N11	-7.10	1.26	1.40
3	D	402	PCZ	O12-N11	-6.89	1.26	1.40
3	C	401	PCZ	O12-N11	-6.77	1.26	1.40
3	A	404	PCZ	O12-N11	-5.94	1.28	1.40
3	A	404	PCZ	C61-C6	-4.04	1.45	1.52
3	D	402	PCZ	C2-N8	-3.90	1.42	1.46
3	D	402	PCZ	C61-C6	-3.62	1.45	1.52
3	A	404	PCZ	C2-N8	-3.42	1.42	1.46
3	C	401	PCZ	C61-C6	-3.31	1.46	1.52
3	D	402	PCZ	C52-S1	-2.64	1.76	1.82
3	B	402	PCZ	C14-C10	-2.53	1.43	1.48
3	A	404	PCZ	C52-S1	-2.39	1.76	1.82
3	B	402	PCZ	C52-S1	-2.39	1.76	1.82
3	B	402	PCZ	C10-C9	-2.36	1.46	1.50
3	B	402	PCZ	C2-N8	-2.06	1.44	1.46
3	B	402	PCZ	C15-S16	2.00	1.73	1.70

All (18) bond angle outliers are listed below:

Mol	Chain	Res	Type	Atoms	Z	Observed(°)	Ideal(°)
3	A	404	PCZ	C5-C52-S1	-4.52	102.38	111.92
3	D	402	PCZ	C14-C15-S16	-3.56	107.41	111.79
3	B	402	PCZ	C14-C15-S16	-3.37	107.66	111.79
3	C	401	PCZ	O91-C9-C10	-2.57	117.67	120.53
3	A	404	PCZ	O91-C9-C10	2.77	123.62	120.53
3	C	401	PCZ	C10-C9-N8	3.78	120.82	114.41
3	A	404	PCZ	C52-S1-C3	7.42	108.67	94.36
3	C	401	PCZ	C52-S1-C3	7.46	108.74	94.36
3	D	402	PCZ	C52-S1-C3	7.97	109.72	94.36
3	B	402	PCZ	C52-S1-C3	8.61	110.96	94.36

*Continued on next page...*

*Continued from previous page...*

Mol	Chain	Res	Type	Atoms	Z	Observed(°)	Ideal(°)
3	B	402	PCZ	C13-O12-N11	8.66	118.38	108.47
3	C	401	PCZ	C13-O12-N11	9.03	118.81	108.47
3	D	402	PCZ	C13-O12-N11	9.74	119.62	108.47
3	A	404	PCZ	O12-N11-C10	11.01	124.23	111.11
3	C	401	PCZ	O12-N11-C10	12.45	125.96	111.11
3	D	402	PCZ	O12-N11-C10	14.52	128.42	111.11
3	A	404	PCZ	C13-O12-N11	15.33	126.02	108.47
3	B	402	PCZ	O12-N11-C10	15.92	130.09	111.11

There are no chirality outliers.

There are no torsion outliers.

There are no ring outliers.

3 monomers are involved in 6 short contacts:

Mol	Chain	Res	Type	Clashes	Symm-Clashes
3	A	404	PCZ	2	0
3	C	401	PCZ	2	0
3	D	402	PCZ	2	0

## 5.7 Other polymers [i](#)

There are no such residues in this entry.

## 5.8 Polymer linkage issues [i](#)

There are no chain breaks in this entry.

## 6 Fit of model and data ⓘ

### 6.1 Protein, DNA and RNA chains ⓘ

In the following table, the column labelled ‘#RSRZ> 2’ contains the number (and percentage) of RSRZ outliers, followed by percent RSRZ outliers for the chain as percentile scores relative to all X-ray entries and entries of similar resolution. The OWAB column contains the minimum, median, 95<sup>th</sup> percentile and maximum values of the occupancy-weighted average B-factor per residue. The column labelled ‘Q< 0.9’ lists the number of (and percentage) of residues with an average occupancy less than 0.9.

Mol	Chain	Analysed	<RSRZ>	#RSRZ>2	OWAB(Å <sup>2</sup> )	Q<0.9
1	A	358/358 (100%)	-0.30	4 (1%) 82 86	22, 33, 51, 68	0
1	B	358/358 (100%)	-0.25	8 (2%) 65 71	25, 37, 55, 69	0
1	C	358/358 (100%)	-0.22	6 (1%) 73 78	24, 35, 54, 77	0
1	D	358/358 (100%)	-0.24	8 (2%) 65 71	23, 33, 52, 70	0
All	All	1432/1432 (100%)	-0.25	26 (1%) 71 76	22, 34, 53, 77	0

All (26) RSRZ outliers are listed below:

Mol	Chain	Res	Type	RSRZ
1	C	4	ALA	5.0
1	C	49	ALA	3.8
1	C	244	ASN	3.4
1	D	241	LEU	3.2
1	C	201	TRP	2.8
1	B	331	GLU	2.8
1	A	252	ILE	2.8
1	D	123	ASP	2.6
1	B	241	LEU	2.6
1	D	252	ILE	2.5
1	D	255	ALA	2.4
1	B	254	LEU	2.4
1	D	205	GLU	2.4
1	D	254	LEU	2.3
1	C	331	GLU	2.2
1	D	208	ALA	2.2
1	B	255	ALA	2.2
1	B	123	ASP	2.2
1	B	49	ALA	2.2
1	A	4	ALA	2.1
1	D	244	ASN	2.1

*Continued on next page...*

*Continued from previous page...*

Mol	Chain	Res	Type	RSRZ
1	A	242	ASP	2.1
1	B	36	GLY	2.0
1	C	99	LYS	2.0
1	A	244	ASN	2.0
1	B	126	LYS	2.0

## 6.2 Non-standard residues in protein, DNA, RNA chains [i](#)

There are no non-standard protein/DNA/RNA residues in this entry.

## 6.3 Carbohydrates [i](#)

There are no carbohydrates in this entry.

## 6.4 Ligands [i](#)

In the following table, the Atoms column lists the number of modelled atoms in the group and the number defined in the chemical component dictionary. LLDF column lists the quality of electron density of the group with respect to its neighbouring residues in protein, DNA or RNA chains. The B-factors column lists the minimum, median, 95<sup>th</sup> percentile and maximum values of B factors of atoms in the group. The column labelled 'Q < 0.9' lists the number of atoms with occupancy less than 0.9.

Mol	Type	Chain	Res	Atoms	RSCC	RSR	LLDF	B-factors(Å <sup>2</sup> )	Q<0.9
2	PO4	A	402	5/5	0.76	0.54	11.61	122,137,144,153	0
2	PO4	D	401	5/5	0.86	0.17	3.65	64,71,85,86	0
3	PCZ	A	404	26/26	0.90	0.18	1.85	38,58,70,93	0
3	PCZ	B	402	26/26	0.90	0.16	1.59	42,58,63,79	0
3	PCZ	C	401	26/26	0.91	0.15	1.32	35,58,66,70	0
3	PCZ	D	402	26/26	0.91	0.14	0.95	38,56,69,74	0
2	PO4	A	401	5/5	0.91	0.23	-	69,72,77,85	0
2	PO4	B	401	5/5	0.84	0.25	-	58,67,87,88	0
2	PO4	A	403	5/5	0.89	0.22	-	70,74,74,76	0

## 6.5 Other polymers [i](#)

There are no such residues in this entry.