



Full wwPDB X-ray Structure Validation Report ⓘ

May 23, 2016 – 08:04 PM EDT

PDB ID : 1KK8
Title : SCALLOP MYOSIN (S1-ADP-BeFx) IN THE ACTIN-DETACHED CON-
FORMATION
Authors : Himmel, M.; Gourinath, S.; Reshetnikova, L.; Shen, Y.; Szent-Gyorgyi, G.;
Cohen, C.
Deposited on : 2001-12-06
Resolution : 2.30 Å(reported)

This is a Full wwPDB X-ray Structure Validation Report for a publicly released PDB entry.
We welcome your comments at validation@mail.wwpdb.org
A user guide is available at
<http://wwpdb.org/validation/2016/XrayValidationReportHelp>
with specific help available everywhere you see the ⓘ symbol.

The following versions of software and data (see [references ⓘ](#)) were used in the production of this report:

MolProbity : 4.02b-467
Mogul : 1.7.1 (RC1), CSD as537be (2016)
Xtriage (Phenix) : 1.9-1692
EDS : rb-20027674
Percentile statistics : 20151230.v01 (using entries in the PDB archive December 30th 2015)
Refmac : 5.8.0135
CCP4 : 6.5.0
Ideal geometry (proteins) : Engh & Huber (2001)
Ideal geometry (DNA, RNA) : Parkinson et al. (1996)
Validation Pipeline (wwPDB-VP) : rb-20027674

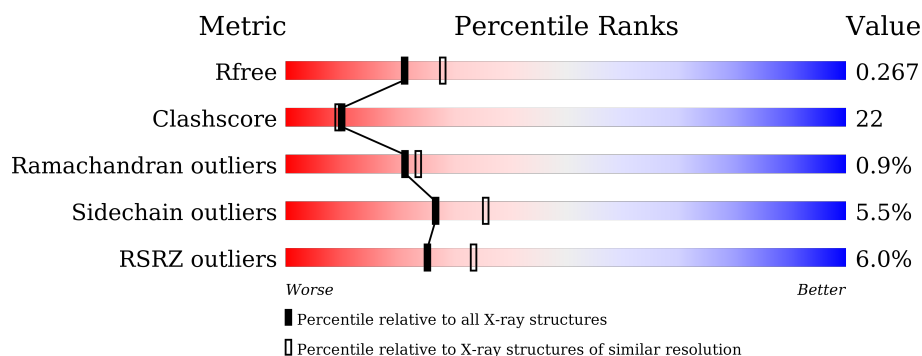
1 Overall quality at a glance

The following experimental techniques were used to determine the structure:

X-RAY DIFFRACTION

The reported resolution of this entry is 2.30 Å.

Percentile scores (ranging between 0-100) for global validation metrics of the entry are shown in the following graphic. The table shows the number of entries on which the scores are based.



Metric	Whole archive (#Entries)	Similar resolution (#Entries, resolution range(Å))
R_{free}	91344	3852 (2.30-2.30)
Clashscore	102246	4452 (2.30-2.30)
Ramachandran outliers	100387	4410 (2.30-2.30)
Sidechain outliers	100360	4409 (2.30-2.30)
RSRZ outliers	91569	3857 (2.30-2.30)

The table below summarises the geometric issues observed across the polymeric chains and their fit to the electron density. The red, orange, yellow and green segments on the lower bar indicate the fraction of residues that contain outliers for ≥ 3 , 2, 1 and 0 types of geometric quality criteria. A grey segment represents the fraction of residues that are not modelled. The numeric value for each fraction is indicated below the corresponding segment, with a dot representing fractions $\leq 5\%$. The upper red bar (where present) indicates the fraction of residues that have poor fit to the electron density. The numeric value is given above the bar.

Mol	Chain	Length	Quality of chain
1	A	837	<div> <div>6%</div> <div> <div></div> <div>60%</div> <div>31%</div> <div>• 5%</div> </div> </div>
2	B	139	<div> <div>7%</div> <div> <div></div> <div>60%</div> <div>37%</div> <div>•</div> </div> </div>
3	C	154	<div> <div>%</div> <div> <div></div> <div>72%</div> <div>25%</div> <div>•</div> </div> </div>

The following table lists non-polymeric compounds, carbohydrate monomers and non-standard residues in protein, DNA, RNA chains that are outliers for geometric or electron-density-fit criteria:

Mol	Type	Chain	Res	Chirality	Geometry	Clashes	Electron density
6	BEF	A	995	-	-	-	X
8	GOL	A	998	-	-	X	-

2 Entry composition

There are 9 unique types of molecules in this entry. The entry contains 8702 atoms, of which 0 are hydrogens and 0 are deuteriums.

In the tables below, the ZeroOcc column contains the number of atoms modelled with zero occupancy, the AltConf column contains the number of residues with at least one atom in alternate conformation and the Trace column contains the number of residues modelled with at most 2 atoms.

- Molecule 1 is a protein called Myosin Heavy Chain, Striated muscle.

Mol	Chain	Residues	Atoms					ZeroOcc	AltConf	Trace
1	A	793	Total	C	N	O	S	3	0	0
			6231	3971	1069	1154	37			

- Molecule 2 is a protein called Myosin Regulatory Light Chain, Striated adductor muscle.

Mol	Chain	Residues	Atoms					ZeroOcc	AltConf	Trace
2	B	139	Total	C	N	O	S	0	0	0
			1059	673	167	210	9			

- Molecule 3 is a protein called Myosin Essential Light Chain, Striated adductor muscle.

Mol	Chain	Residues	Atoms					ZeroOcc	AltConf	Trace
3	C	154	Total	C	N	O	S	3	0	0
			1187	757	192	231	7			

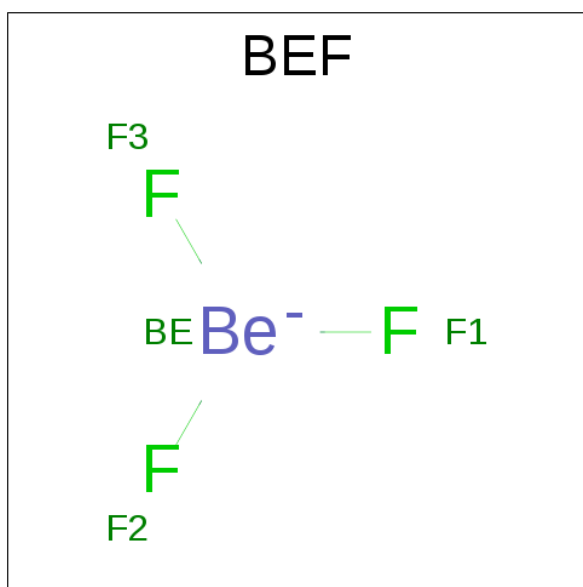
- Molecule 4 is MAGNESIUM ION (three-letter code: MG) (formula: Mg).

Mol	Chain	Residues	Atoms		ZeroOcc	AltConf
4	B	1	Total	Mg	0	0
			1	1		
4	A	1	Total	Mg	0	0
			1	1		

- Molecule 5 is CALCIUM ION (three-letter code: CA) (formula: Ca).

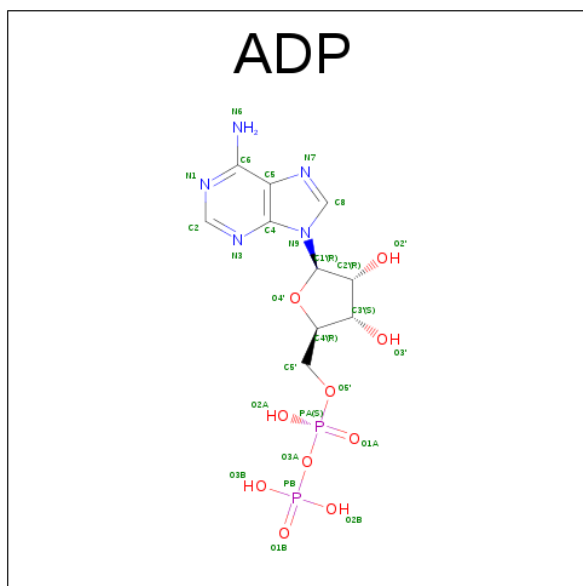
Mol	Chain	Residues	Atoms		ZeroOcc	AltConf
5	C	1	Total	Ca	0	0
			1	1		

- Molecule 6 is BERYLLIUM TRIFLUORIDE ION (three-letter code: BEF) (formula: BeF₃).



Mol	Chain	Residues	Atoms			ZeroOcc	AltConf
6	A	1	Total	Be	F	0	0
			4	1	3		

- Molecule 7 is ADENOSINE-5'-DIPHOSPHATE (three-letter code: ADP) (formula: $C_{10}H_{15}N_5O_{10}P_2$).



Mol	Chain	Residues	Atoms				ZeroOcc	AltConf
7	A	1	Total	C	N	O	P	
			27	10	5	10	2	

- Molecule 8 is GLYCEROL (three-letter code: GOL) (formula: $C_3H_8O_3$).



Mol	Chain	Residues	Atoms			ZeroOcc	AltConf
8	A	1	Total	C	O	0	0
			6	3	3		

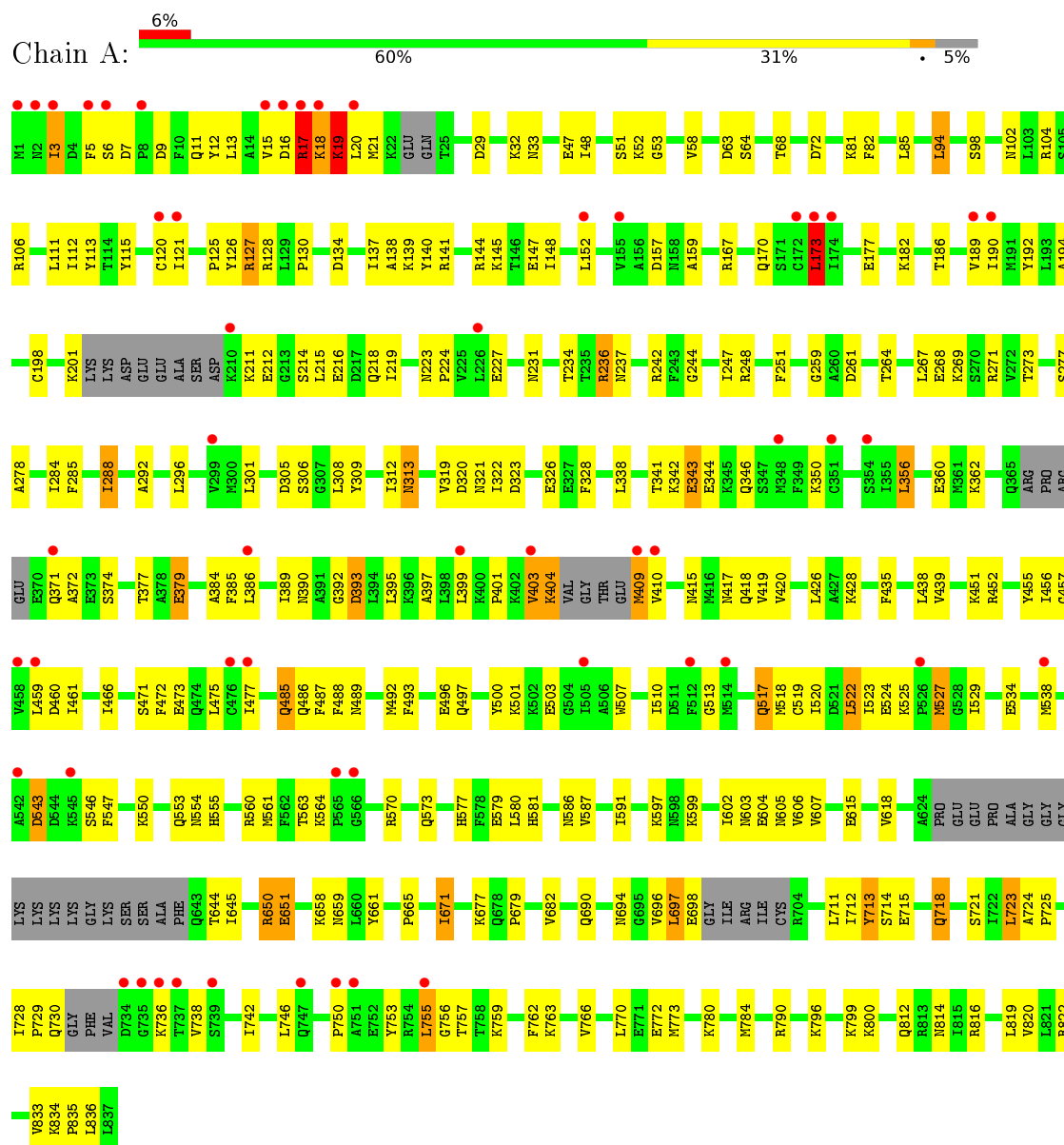
- Molecule 9 is water.

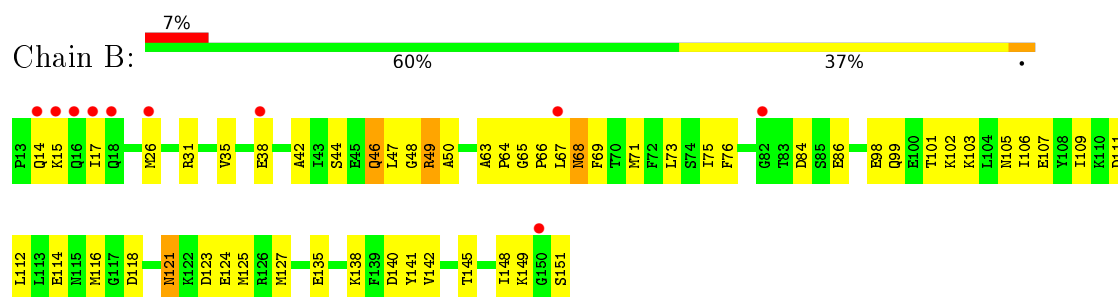
Mol	Chain	Residues	Atoms		ZeroOcc	AltConf
9	A	145	Total	O	0	0
			145	145		
9	B	20	Total	O	0	0
			20	20		
9	C	20	Total	O	0	0
			20	20		

3 Residue-property plots

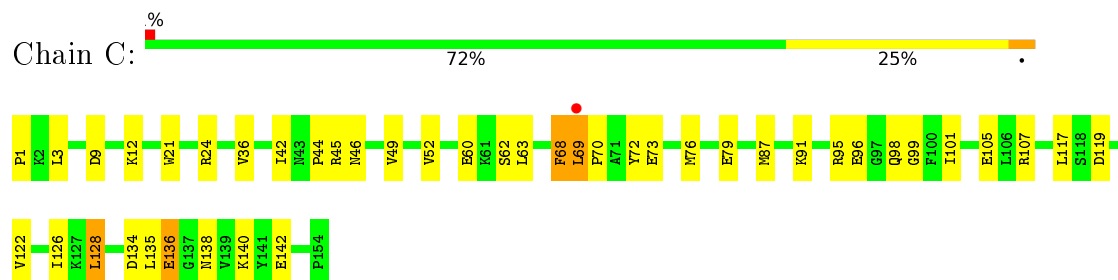
These plots are drawn for all protein, RNA and DNA chains in the entry. The first graphic for a chain summarises the proportions of errors displayed in the second graphic. The second graphic shows the sequence view annotated by issues in geometry and electron density. Residues are color-coded according to the number of geometric quality criteria for which they contain at least one outlier: green = 0, yellow = 1, orange = 2 and red = 3 or more. A red dot above a residue indicates a poor fit to the electron density ($RSRZ > 2$). Stretches of 2 or more consecutive residues without any outlier are shown as a green connector. Residues present in the sample, but not in the model, are shown in grey.

• Molecule 1: Myosin Heavy Chain, Striated muscle





- Molecule 3: Myosin Essential Light Chain, Striated adductor muscle



4 Data and refinement statistics

Property	Value	Source
Space group	P 1	Depositor
Cell constants a, b, c, α , β , γ	51.60 Å 58.53 Å 133.29 Å 81.08° 84.94° 67.24°	Depositor
Resolution (Å)	29.84 – 2.30 29.84 – 2.30	Depositor EDS
% Data completeness (in resolution range)	77.9 (29.84-2.30) 74.7 (29.84-2.30)	Depositor EDS
R_{merge}	(Not available)	Depositor
R_{sym}	0.10	Depositor
$\langle I/\sigma(I) \rangle$ ¹	2.80 (at 2.29 Å)	Xtriage
Refinement program	CNS 0.9	Depositor
R, R_{free}	0.230 , 0.269 0.225 , 0.267	Depositor DCC
R_{free} test set	2519 reflections (5.40%)	DCC
Wilson B-factor (Å ²)	44.2	Xtriage
Anisotropy	0.209	Xtriage
Bulk solvent k_{sol} (e/Å ³), B_{sol} (Å ²)	0.33 , 46.9	EDS
L-test for twinning ²	$\langle L \rangle = 0.50$, $\langle L^2 \rangle = 0.33$	Xtriage
Estimated twinning fraction	No twinning to report.	Xtriage
F_o, F_c correlation	0.94	EDS
Total number of atoms	8702	wwPDB-VP
Average B, all atoms (Å ²)	55.0	wwPDB-VP

Xtriage's analysis on translational NCS is as follows: *The largest off-origin peak in the Patterson function is 4.60% of the height of the origin peak. No significant pseudotranslation is detected.*

¹Intensities estimated from amplitudes.

²Theoretical values of $\langle |L| \rangle$, $\langle L^2 \rangle$ for acentric reflections are 0.5, 0.375 respectively for untwinned datasets, and 0.333, 0.2 for perfectly twinned datasets.

5 Model quality [i](#)

5.1 Standard geometry [i](#)

Bond lengths and bond angles in the following residue types are not validated in this section: GOL, MG, BEF, CA, ADP

The Z score for a bond length (or angle) is the number of standard deviations the observed value is removed from the expected value. A bond length (or angle) with $|Z| > 5$ is considered an outlier worth inspection. RMSZ is the root-mean-square of all Z scores of the bond lengths (or angles).

Mol	Chain	Bond lengths		Bond angles	
		RMSZ	# $ Z > 5$	RMSZ	# $ Z > 5$
1	A	0.52	0/6354	0.70	5/8575 (0.1%)
2	B	0.49	0/1076	0.63	0/1444
3	C	0.48	0/1211	0.65	1/1633 (0.1%)
All	All	0.51	0/8641	0.69	6/11652 (0.1%)

There are no bond length outliers.

All (6) bond angle outliers are listed below:

Mol	Chain	Res	Type	Atoms	Z	Observed(°)	Ideal(°)
1	A	19	LYS	N-CA-C	-7.64	90.38	111.00
1	A	21	MET	N-CA-C	-6.49	93.47	111.00
1	A	173	LEU	CA-CB-CG	6.49	130.23	115.30
3	C	1	PRO	N-CA-CB	5.53	109.94	103.30
1	A	356	LEU	CA-CB-CG	5.21	127.29	115.30
1	A	527	MET	CG-SD-CE	5.18	108.48	100.20

There are no chirality outliers.

There are no planarity outliers.

5.2 Too-close contacts [i](#)

In the following table, the Non-H and H(model) columns list the number of non-hydrogen atoms and hydrogen atoms in the chain respectively. The H(added) column lists the number of hydrogen atoms added and optimized by MolProbity. The Clashes column lists the number of clashes within the asymmetric unit, whereas Symm-Clashes lists symmetry related clashes.

Mol	Chain	Non-H	H(model)	H(added)	Clashes	Symm-Clashes
1	A	6231	0	6104	284	0
2	B	1059	0	1009	62	0

Continued on next page...

Continued from previous page...

Mol	Chain	Non-H	H(model)	H(added)	Clashes	Symm-Clashes
3	C	1187	0	1109	38	0
4	A	1	0	0	0	0
4	B	1	0	0	0	0
5	C	1	0	0	0	0
6	A	4	0	0	0	0
7	A	27	0	12	0	0
8	A	6	0	8	9	0
9	A	145	0	0	47	0
9	B	20	0	0	7	0
9	C	20	0	0	2	0
All	All	8702	0	8242	369	0

The all-atom clashscore is defined as the number of clashes found per 1000 atoms (including hydrogen atoms). The all-atom clashscore for this structure is 22.

All (369) close contacts within the same asymmetric unit are listed below, sorted by their clash magnitude.

Atom-1	Atom-2	Interatomic distance (Å)	Clash overlap (Å)
1:A:523:ILE:HD11	1:A:580:LEU:HD21	1.33	1.08
1:A:98:SER:HB2	9:A:1127:HOH:O	1.57	1.02
1:A:16:ASP:OD2	1:A:19:LYS:HB3	1.60	1.01
1:A:591:ILE:HD13	9:A:1138:HOH:O	1.63	0.97
1:A:350:LYS:HG2	1:A:386:LEU:HD22	1.45	0.95
1:A:833:VAL:C	1:A:835:PRO:HD2	1.90	0.92
1:A:29:ASP:H	1:A:33:ASN:HD22	1.17	0.91
2:B:111:ASP:HA	9:B:1012:HOH:O	1.69	0.91
1:A:390:ASN:ND2	1:A:393:ASP:H	1.69	0.90
1:A:390:ASN:HD22	1:A:393:ASP:H	1.04	0.90
1:A:836:LEU:HD11	2:B:47:LEU:HD21	1.52	0.90
1:A:234:THR:HG21	8:A:998:GOL:O2	1.74	0.88
1:A:603:ASN:HB3	9:A:1117:HOH:O	1.73	0.87
1:A:546:SER:O	9:A:1118:HOH:O	1.93	0.87
1:A:497:GLN:O	1:A:501:LYS:HD3	1.75	0.86
3:C:96:GLU:HG3	3:C:98:GLN:HG2	1.56	0.86
1:A:605:ASN:HB3	9:A:1117:HOH:O	1.75	0.85
1:A:599:LYS:HD2	1:A:644:THR:HG22	1.57	0.85
1:A:755:LEU:H	1:A:755:LEU:HD23	1.42	0.85
1:A:403:VAL:HG22	1:A:404:LYS:H	1.42	0.84
1:A:755:LEU:H	1:A:755:LEU:CD2	1.90	0.84
1:A:661:TYR:OH	9:A:1074:HOH:O	1.95	0.83
2:B:121:ASN:HD22	2:B:123:ASP:H	1.23	0.83

Continued on next page...

Continued from previous page...

Atom-1	Atom-2	Interatomic distance (Å)	Clash overlap (Å)
1:A:137:ILE:O	9:A:1104:HOH:O	1.96	0.81
1:A:577:HIS:ND1	1:A:591:ILE:HG13	1.96	0.81
3:C:42:ILE:HG22	3:C:44:PRO:HD3	1.63	0.81
1:A:29:ASP:H	1:A:33:ASN:ND2	1.78	0.80
1:A:547:PHE:HD2	9:A:1138:HOH:O	1.62	0.80
3:C:9:ASP:O	3:C:12:LYS:HG3	1.82	0.80
1:A:323:ASP:OD2	1:A:326:GLU:HB2	1.84	0.78
3:C:101:ILE:HD11	3:C:105:GLU:HG2	1.66	0.77
1:A:248:ARG:HB2	9:A:1100:HOH:O	1.85	0.76
1:A:485:GLN:NE2	1:A:489:ASN:ND2	2.33	0.76
1:A:518:MET:HE2	1:A:561:MET:HG2	1.67	0.76
1:A:550:LYS:HB2	9:A:1118:HOH:O	1.85	0.76
1:A:836:LEU:HD11	2:B:47:LEU:CD2	2.17	0.75
1:A:343:GLU:HG3	1:A:344:GLU:H	1.51	0.74
1:A:755:LEU:N	1:A:755:LEU:HD23	2.00	0.74
1:A:16:ASP:O	1:A:18:LYS:N	2.22	0.73
3:C:36:VAL:HG11	3:C:68:PHE:HE2	1.53	0.73
2:B:121:ASN:ND2	2:B:123:ASP:H	1.87	0.73
1:A:466:ILE:HG12	1:A:587:VAL:HG22	1.71	0.73
1:A:814:ASN:HD21	2:B:84:ASP:H	1.35	0.72
1:A:140:TYR:N	9:A:1104:HOH:O	2.22	0.72
1:A:215:LEU:HD21	1:A:259:GLY:HA2	1.70	0.72
3:C:3:LEU:HD21	3:C:76:MET:SD	2.29	0.72
1:A:11:GLN:NE2	9:A:1141:HOH:O	2.22	0.71
1:A:538:MET:HG2	1:A:599:LYS:NZ	2.05	0.71
1:A:390:ASN:HD22	1:A:393:ASP:N	1.85	0.71
1:A:603:ASN:O	1:A:607:VAL:HG23	1.90	0.71
1:A:460:ASP:OD2	9:A:1012:HOH:O	2.09	0.71
1:A:342:LYS:O	1:A:346:GLN:HG3	1.90	0.70
1:A:790:ARG:NH1	3:C:117:LEU:HD23	2.05	0.70
1:A:501:LYS:HD2	1:A:501:LYS:N	2.07	0.69
1:A:485:GLN:HE22	1:A:489:ASN:HD21	1.37	0.69
1:A:756:GLY:HA3	1:A:759:LYS:O	1.92	0.69
1:A:714:SER:O	1:A:718:GLN:HG2	1.92	0.69
2:B:44:SER:OG	2:B:50:ALA:HA	1.92	0.69
1:A:145:LYS:HD2	9:A:1123:HOH:O	1.92	0.69
3:C:36:VAL:HG11	3:C:68:PHE:CE2	2.28	0.69
1:A:721:SER:HA	1:A:742:ILE:CD1	2.23	0.69
1:A:485:GLN:NE2	1:A:489:ASN:HD21	1.92	0.68
1:A:834:LYS:N	1:A:835:PRO:HD2	2.10	0.67
1:A:360:GLU:O	1:A:362:LYS:HD2	1.95	0.67

Continued on next page...

Continued from previous page...

Atom-1	Atom-2	Interatomic distance (Å)	Clash overlap (Å)
1:A:350:LYS:HG2	1:A:386:LEU:CD2	2.22	0.67
2:B:138:LYS:HE3	9:B:1003:HOH:O	1.94	0.67
1:A:834:LYS:N	1:A:835:PRO:CD	2.58	0.67
1:A:836:LEU:CD1	2:B:47:LEU:HD21	2.25	0.66
2:B:107:GLU:OE2	9:B:1000:HOH:O	2.13	0.66
1:A:112:ILE:HD13	1:A:125:PRO:HG3	1.76	0.66
1:A:401:PRO:HA	1:A:605:ASN:HD22	1.60	0.66
1:A:248:ARG:CB	9:A:1100:HOH:O	2.41	0.66
2:B:140:ASP:OD1	2:B:142:VAL:HG22	1.95	0.66
1:A:112:ILE:HG21	1:A:125:PRO:HG3	1.77	0.66
1:A:796:LYS:HE2	3:C:128:LEU:HD11	1.78	0.66
1:A:403:VAL:HG13	1:A:404:LYS:N	2.11	0.66
1:A:658:LYS:CB	9:A:1106:HOH:O	2.44	0.65
1:A:696:VAL:C	1:A:698:GLU:H	1.98	0.65
1:A:234:THR:HG23	1:A:237:ASN:H	1.62	0.65
1:A:485:GLN:HE22	1:A:489:ASN:ND2	1.93	0.65
1:A:522:LEU:HD13	1:A:580:LEU:HD11	1.78	0.65
3:C:9:ASP:HA	3:C:12:LYS:HG2	1.79	0.65
1:A:403:VAL:HG12	1:A:410:VAL:HB	1.79	0.65
1:A:52:LYS:O	9:A:1053:HOH:O	2.15	0.64
1:A:538:MET:HG2	1:A:599:LYS:HZ3	1.62	0.64
2:B:86:GLU:HG3	2:B:145:THR:HG22	1.79	0.64
1:A:417:ASN:HA	1:A:420:VAL:HG22	1.80	0.64
1:A:799:LYS:HG2	1:A:800:LYS:N	2.13	0.64
2:B:35:VAL:HB	2:B:67:LEU:HD23	1.79	0.64
3:C:136:GLU:HB2	3:C:138:ASN:OD1	1.98	0.64
2:B:63:ALA:HB1	2:B:71:MET:HG2	1.81	0.63
1:A:390:ASN:ND2	1:A:393:ASP:N	2.45	0.63
1:A:341:THR:HB	1:A:343:GLU:HG3	1.80	0.63
1:A:696:VAL:O	1:A:698:GLU:N	2.32	0.63
1:A:242:ARG:HH22	8:A:998:GOL:H12	1.62	0.63
1:A:137:ILE:O	1:A:141:ARG:HG3	1.99	0.62
1:A:501:LYS:HD2	1:A:501:LYS:H	1.64	0.62
1:A:780:LYS:HE3	3:C:45:ARG:NH1	2.14	0.62
1:A:182:LYS:HB3	1:A:460:ASP:OD1	2.00	0.62
1:A:17:ARG:CZ	9:A:1001:HOH:O	2.48	0.62
1:A:527:MET:HE2	1:A:555:HIS:NE2	2.15	0.62
2:B:102:LYS:O	2:B:103:LYS:HD2	2.00	0.61
1:A:152:LEU:HD21	1:A:189:VAL:HG23	1.83	0.61
1:A:51:SER:CB	3:C:95:ARG:HH21	2.14	0.61
1:A:244:GLY:HA3	1:A:461:ILE:HG22	1.81	0.61

Continued on next page...

Continued from previous page...

Atom-1	Atom-2	Interatomic distance (Å)	Clash overlap (Å)
2:B:84:ASP:O	2:B:149:LYS:NZ	2.32	0.61
1:A:527:MET:HE2	1:A:555:HIS:CD2	2.35	0.61
1:A:563:THR:HG22	1:A:564:LYS:N	2.15	0.61
1:A:487:PHE:HA	9:A:1074:HOH:O	2.00	0.61
1:A:579:GLU:OE1	1:A:586:ASN:HB3	2.01	0.61
1:A:17:ARG:NE	9:A:1001:HOH:O	2.33	0.60
1:A:563:THR:CG2	1:A:564:LYS:N	2.65	0.60
1:A:550:LYS:CB	9:A:1118:HOH:O	2.47	0.60
2:B:63:ALA:HB1	2:B:71:MET:CG	2.32	0.60
1:A:721:SER:HA	1:A:742:ILE:HD11	1.82	0.60
1:A:390:ASN:ND2	1:A:393:ASP:OD1	2.35	0.59
2:B:84:ASP:O	2:B:149:LYS:CE	2.50	0.59
1:A:53:GLY:HA3	9:A:1053:HOH:O	2.02	0.59
3:C:99:GLY:O	3:C:140:LYS:HD3	2.03	0.59
1:A:560:ARG:HH11	1:A:560:ARG:HG2	1.68	0.58
1:A:360:GLU:HB2	1:A:379:GLU:HG3	1.86	0.58
1:A:772:GLU:HA	1:A:772:GLU:OE1	2.04	0.57
1:A:518:MET:CE	1:A:561:MET:HG2	2.34	0.57
2:B:141:TYR:N	9:B:1011:HOH:O	2.38	0.57
1:A:712:ILE:O	1:A:712:ILE:HG13	2.05	0.57
1:A:3:ILE:N	1:A:3:ILE:HD12	2.19	0.57
2:B:98:GLU:H	2:B:98:GLU:CD	2.06	0.57
1:A:523:ILE:HD13	1:A:529:ILE:HD12	1.87	0.57
1:A:284:ILE:HG13	1:A:288:ILE:HD13	1.87	0.56
1:A:343:GLU:HG3	1:A:344:GLU:N	2.20	0.56
1:A:63:ASP:O	1:A:64:SER:HB2	2.05	0.56
1:A:296:LEU:HD11	9:A:1075:HOH:O	2.03	0.56
2:B:15:LYS:HD2	2:B:15:LYS:O	2.05	0.56
1:A:137:ILE:C	9:A:1104:HOH:O	2.42	0.56
1:A:718:GLN:HB2	9:A:1119:HOH:O	2.05	0.56
1:A:341:THR:HG22	1:A:342:LYS:H	1.69	0.56
1:A:513:GLY:HA2	9:A:1109:HOH:O	2.06	0.56
3:C:46:ASN:O	3:C:49:VAL:HG22	2.05	0.56
1:A:501:LYS:CD	1:A:501:LYS:H	2.19	0.56
1:A:248:ARG:CG	9:A:1100:HOH:O	2.54	0.56
1:A:121:ILE:HD12	1:A:121:ILE:N	2.21	0.55
1:A:15:VAL:HG23	9:A:1031:HOH:O	2.06	0.55
1:A:341:THR:HG22	1:A:342:LYS:N	2.21	0.55
1:A:51:SER:HB3	3:C:95:ARG:HH21	1.71	0.55
1:A:603:ASN:ND2	9:A:1130:HOH:O	2.38	0.55
2:B:145:THR:O	2:B:148:ILE:HG22	2.07	0.55

Continued on next page...

Continued from previous page...

Atom-1	Atom-2	Interatomic distance (Å)	Clash overlap (Å)
1:A:12:TYR:CD1	1:A:130:PRO:HD2	2.42	0.55
1:A:212:GLU:HG3	1:A:218:GLN:NE2	2.21	0.55
1:A:248:ARG:HG3	9:A:1100:HOH:O	2.05	0.55
1:A:81:LYS:HG3	1:A:82:PHE:N	2.21	0.55
3:C:62:SER:O	3:C:63:LEU:HD23	2.07	0.55
1:A:234:THR:CG2	1:A:237:ASN:H	2.20	0.54
1:A:486:GLN:C	9:A:1074:HOH:O	2.45	0.54
1:A:137:ILE:HG22	1:A:137:ILE:O	2.07	0.54
1:A:309:TYR:CG	1:A:356:LEU:HG	2.42	0.54
1:A:51:SER:HB2	3:C:95:ARG:HE	1.71	0.54
1:A:321:ASN:OD1	1:A:322:ILE:HG13	2.08	0.54
1:A:397:ALA:HA	1:A:605:ASN:ND2	2.22	0.54
1:A:615:GLU:HG3	1:A:618:VAL:H	1.72	0.54
1:A:177:GLU:OE2	1:A:690:GLN:HG2	2.08	0.54
1:A:715:GLU:HA	1:A:718:GLN:CG	2.38	0.54
1:A:81:LYS:HD2	1:A:82:PHE:CZ	2.42	0.54
1:A:127:ARG:HE	1:A:679:PRO:HB2	1.73	0.54
1:A:301:LEU:HD11	1:A:385:PHE:HD2	1.73	0.54
1:A:374:SER:OG	1:A:395:LEU:HD22	2.08	0.53
1:A:401:PRO:HG3	1:A:603:ASN:HD21	1.73	0.53
1:A:242:ARG:NH2	8:A:998:GOL:H12	2.24	0.53
1:A:242:ARG:HH22	8:A:998:GOL:C1	2.22	0.53
1:A:313:ASN:HD22	1:A:313:ASN:C	2.11	0.53
1:A:597:LYS:O	1:A:645:ILE:HD12	2.08	0.53
1:A:5:PHE:CG	1:A:6:SER:N	2.72	0.52
1:A:201:LYS:HD3	1:A:201:LYS:N	2.24	0.52
1:A:488:PHE:O	1:A:492:MET:HG2	2.09	0.52
1:A:320:ASP:O	1:A:321:ASN:OD1	2.27	0.52
1:A:173:LEU:HD13	1:A:459:LEU:HD23	1.90	0.52
1:A:473:GLU:O	1:A:477:ILE:HG12	2.09	0.52
2:B:121:ASN:HD22	2:B:123:ASP:N	1.99	0.51
2:B:105:ASN:HB3	2:B:107:GLU:OE1	2.10	0.51
2:B:69:PHE:CE2	2:B:73:LEU:HD11	2.46	0.51
2:B:38:GLU:N	2:B:38:GLU:CD	2.64	0.51
2:B:105:ASN:ND2	9:B:999:HOH:O	2.43	0.51
1:A:399:LEU:HD23	1:A:419:VAL:HG21	1.93	0.51
1:A:721:SER:HB2	1:A:728:ILE:CD1	2.41	0.51
1:A:292:ALA:HB3	1:A:328:PHE:HD2	1.76	0.51
1:A:563:THR:HG22	1:A:564:LYS:O	2.10	0.51
1:A:7:ASP:OD1	1:A:9:ASP:HB2	2.10	0.50
1:A:267:LEU:HD22	1:A:435:PHE:CG	2.46	0.50

Continued on next page...

Continued from previous page...

Atom-1	Atom-2	Interatomic distance (Å)	Clash overlap (Å)
1:A:755:LEU:HG	1:A:755:LEU:O	2.11	0.50
2:B:135:GLU:OE2	2:B:138:LYS:HD2	2.11	0.50
1:A:547:PHE:CD2	9:A:1138:HOH:O	2.48	0.50
1:A:599:LYS:HD2	1:A:644:THR:CG2	2.37	0.50
1:A:762:PHE:HB3	1:A:766:VAL:HB	1.92	0.50
2:B:116:MET:HG2	3:C:21:TRP:O	2.11	0.50
2:B:118:ASP:OD1	3:C:24:ARG:HD2	2.11	0.50
1:A:518:MET:CE	1:A:560:ARG:NH1	2.74	0.50
2:B:106:ILE:HG23	2:B:107:GLU:N	2.26	0.50
1:A:115:TYR:CE1	9:A:1143:HOH:O	2.55	0.50
1:A:223:ASN:HB2	1:A:224:PRO:HD3	1.94	0.50
1:A:770:LEU:HD23	1:A:773:MET:CE	2.42	0.50
1:A:784:MET:SD	3:C:79:GLU:HG2	2.52	0.50
1:A:603:ASN:CB	9:A:1117:HOH:O	2.47	0.50
1:A:729:PRO:O	1:A:730:GLN:CB	2.59	0.50
1:A:816:ARG:O	1:A:820:VAL:HG12	2.12	0.50
2:B:107:GLU:H	2:B:107:GLU:CD	2.11	0.50
3:C:96:GLU:HG3	3:C:98:GLN:CG	2.36	0.49
1:A:750:PRO:HA	1:A:753:TYR:CE1	2.47	0.49
3:C:72:TYR:CE2	3:C:76:MET:SD	3.06	0.49
1:A:403:VAL:HG22	1:A:404:LYS:N	2.19	0.49
1:A:543:ASP:H	1:A:546:SER:HB3	1.78	0.49
1:A:277:SER:O	1:A:278:ALA:HB3	2.13	0.49
1:A:696:VAL:C	1:A:698:GLU:N	2.65	0.49
1:A:186:THR:O	1:A:190:ILE:HG12	2.12	0.49
1:A:384:ALA:HB1	1:A:389:ILE:O	2.12	0.48
1:A:520:ILE:O	1:A:524:GLU:HG2	2.13	0.48
3:C:107:ARG:NH1	3:C:119:ASP:OD1	2.44	0.48
1:A:518:MET:HE3	1:A:560:ARG:NH1	2.28	0.48
1:A:603:ASN:ND2	9:A:1117:HOH:O	2.47	0.48
1:A:486:GLN:HE22	1:A:517:GLN:HG2	1.77	0.48
1:A:799:LYS:HG2	9:A:1110:HOH:O	2.13	0.48
1:A:471:SER:OG	1:A:472:PHE:N	2.45	0.48
3:C:69:LEU:O	3:C:73:GLU:HG3	2.14	0.48
1:A:7:ASP:OD2	1:A:139:LYS:NZ	2.47	0.48
1:A:534:GLU:CD	1:A:650:ARG:HH21	2.17	0.48
1:A:305:ASP:O	1:A:308:LEU:HB2	2.14	0.47
1:A:729:PRO:O	1:A:730:GLN:HB2	2.14	0.47
1:A:104:ARG:HG3	1:A:682:VAL:HG21	1.96	0.47
3:C:49:VAL:HA	3:C:52:VAL:HG22	1.96	0.47
1:A:602:ILE:HD12	1:A:602:ILE:O	2.14	0.47

Continued on next page...

Continued from previous page...

Atom-1	Atom-2	Interatomic distance (Å)	Clash overlap (Å)
1:A:651:GLU:HA	1:A:651:GLU:OE2	2.14	0.47
2:B:68:ASN:ND2	2:B:71:MET:H	2.12	0.47
1:A:496:GLU:HG3	1:A:500:TYR:CZ	2.49	0.47
1:A:451:LYS:HE2	1:A:452:ARG:O	2.14	0.47
2:B:109:ILE:O	2:B:109:ILE:HD12	2.14	0.47
1:A:236:ARG:HB2	8:A:998:GOL:C3	2.44	0.47
1:A:812:GLN:O	1:A:816:ARG:HG3	2.15	0.47
1:A:415:ASN:HD21	1:A:418:GLN:HG3	1.80	0.47
1:A:236:ARG:HB2	8:A:998:GOL:H31	1.96	0.47
1:A:570:ARG:O	1:A:573:GLN:HB2	2.15	0.47
1:A:658:LYS:CA	9:A:1106:HOH:O	2.63	0.47
1:A:814:ASN:ND2	2:B:84:ASP:H	2.07	0.47
3:C:122:VAL:O	3:C:126:ILE:HG13	2.14	0.47
1:A:501:LYS:CD	1:A:501:LYS:N	2.76	0.47
1:A:397:ALA:CB	1:A:605:ASN:ND2	2.78	0.47
1:A:268:GLU:OE1	1:A:271:ARG:NE	2.39	0.46
1:A:833:VAL:HG13	2:B:26:MET:SD	2.55	0.46
1:A:214:SER:O	1:A:218:GLN:HG3	2.15	0.46
1:A:312:ILE:HD13	1:A:356:LEU:HD11	1.96	0.46
1:A:426:LEU:HD13	1:A:606:VAL:HG11	1.97	0.46
1:A:713:TYR:CE2	1:A:736:LYS:HG2	2.50	0.46
1:A:85:LEU:N	1:A:102:ASN:HD21	2.14	0.46
1:A:141:ARG:N	9:A:1104:HOH:O	2.18	0.46
1:A:658:LYS:HA	9:A:1106:HOH:O	2.14	0.46
1:A:94:LEU:HD13	1:A:697:LEU:CB	2.45	0.46
3:C:24:ARG:HG2	3:C:24:ARG:O	2.15	0.46
1:A:493:PHE:O	1:A:496:GLU:HB3	2.14	0.46
1:A:306:SER:C	1:A:308:LEU:H	2.19	0.46
3:C:101:ILE:CD1	3:C:105:GLU:HG2	2.42	0.46
1:A:215:LEU:O	1:A:219:ILE:HG13	2.16	0.46
1:A:756:GLY:CA	1:A:759:LYS:O	2.61	0.46
1:A:721:SER:HA	1:A:742:ILE:HD13	1.94	0.46
1:A:538:MET:HG2	1:A:599:LYS:HZ1	1.80	0.46
1:A:126:TYR:CZ	1:A:677:LYS:HA	2.51	0.45
2:B:49:ARG:CB	9:B:1014:HOH:O	2.64	0.45
2:B:69:PHE:CZ	2:B:73:LEU:HD21	2.51	0.45
3:C:69:LEU:CB	3:C:70:PRO:HD3	2.46	0.45
1:A:371:GLN:HG3	1:A:372:ALA:N	2.30	0.45
1:A:814:ASN:O	2:B:148:ILE:HD11	2.16	0.45
2:B:35:VAL:HB	2:B:67:LEU:CD2	2.46	0.45
3:C:69:LEU:HB3	3:C:70:PRO:HD3	1.98	0.45

Continued on next page...

Continued from previous page...

Atom-1	Atom-2	Interatomic distance (Å)	Clash overlap (Å)
1:A:157:ASP:OD2	1:A:192:TYR:OH	2.25	0.45
1:A:106:ARG:HB3	1:A:111:LEU:HB2	1.99	0.45
8:A:998:GOL:H11	9:A:1019:HOH:O	2.18	0.45
1:A:251:PHE:CE1	1:A:456:ILE:HG13	2.52	0.44
1:A:560:ARG:HG2	1:A:560:ARG:NH1	2.31	0.44
1:A:319:VAL:HB	1:A:322:ILE:HB	1.99	0.44
2:B:99:GLN:CB	2:B:101:THR:HG23	2.47	0.44
3:C:135:LEU:H	3:C:135:LEU:HD12	1.83	0.44
1:A:12:TYR:HD1	1:A:130:PRO:HD2	1.82	0.44
1:A:461:ILE:HD12	1:A:461:ILE:O	2.16	0.44
2:B:107:GLU:N	2:B:107:GLU:OE1	2.41	0.44
2:B:121:ASN:ND2	2:B:123:ASP:N	2.62	0.44
1:A:507:TRP:CZ3	1:A:763:LYS:HG3	2.53	0.44
2:B:142:VAL:HG22	9:B:1011:HOH:O	2.17	0.44
2:B:44:SER:O	2:B:48:GLY:N	2.49	0.44
1:A:242:ARG:HD2	1:A:271:ARG:NE	2.33	0.44
1:A:120:CYS:SG	9:A:1143:HOH:O	2.62	0.44
1:A:738:VAL:O	1:A:742:ILE:HG13	2.18	0.44
1:A:409:MET:HA	9:A:1116:HOH:O	2.17	0.43
1:A:247:ILE:O	1:A:457:GLY:HA2	2.19	0.43
2:B:112:LEU:HA	2:B:116:MET:CE	2.48	0.43
1:A:461:ILE:HD12	1:A:461:ILE:C	2.39	0.43
1:A:390:ASN:ND2	1:A:392:GLY:N	2.66	0.43
1:A:713:TYR:HE2	1:A:756:GLY:O	2.02	0.43
1:A:799:LYS:CG	1:A:800:LYS:N	2.81	0.43
1:A:211:LYS:HB3	1:A:211:LYS:HE2	1.62	0.43
1:A:159:ALA:O	1:A:170:GLN:HG3	2.18	0.43
1:A:527:MET:CE	1:A:554:ASN:HB3	2.48	0.43
1:A:604:GLU:HA	1:A:607:VAL:CG2	2.48	0.43
2:B:114:GLU:HB2	2:B:125:MET:SD	2.59	0.43
2:B:42:ALA:O	2:B:46:GLN:HB2	2.19	0.43
2:B:17:ILE:CD1	2:B:73:LEU:HD22	2.48	0.43
2:B:65:GLY:O	2:B:66:PRO:C	2.57	0.43
2:B:68:ASN:H	2:B:68:ASN:ND2	2.16	0.43
1:A:284:ILE:HG23	1:A:285:PHE:N	2.34	0.43
1:A:106:ARG:NH2	1:A:113:TYR:O	2.47	0.42
1:A:659:ASN:HD22	1:A:659:ASN:HA	1.57	0.42
2:B:145:THR:HA	2:B:148:ILE:HG22	2.00	0.42
2:B:38:GLU:H	2:B:38:GLU:CD	2.21	0.42
1:A:321:ASN:C	1:A:321:ASN:OD1	2.57	0.42
1:A:29:ASP:N	1:A:33:ASN:HD22	2.00	0.42

Continued on next page...

Continued from previous page...

Atom-1	Atom-2	Interatomic distance (Å)	Clash overlap (Å)
1:A:497:GLN:O	1:A:501:LYS:CD	2.58	0.42
1:A:724:ALA:N	1:A:725:PRO:HD3	2.34	0.42
1:A:770:LEU:HD23	1:A:773:MET:HE3	2.02	0.42
1:A:799:LYS:HG2	1:A:800:LYS:H	1.84	0.42
1:A:438:LEU:HD23	1:A:438:LEU:C	2.40	0.42
1:A:711:LEU:O	1:A:759:LYS:HB2	2.19	0.42
1:A:822:ARG:HB3	1:A:822:ARG:HE	1.46	0.42
2:B:84:ASP:O	2:B:149:LYS:HE3	2.18	0.42
1:A:721:SER:HB2	1:A:728:ILE:HD13	2.01	0.42
1:A:234:THR:CG2	8:A:998:GOL:O2	2.58	0.42
2:B:101:THR:O	2:B:102:LYS:HB2	2.20	0.42
2:B:111:ASP:O	2:B:116:MET:HE3	2.19	0.42
1:A:148:ILE:HG23	9:A:1088:HOH:O	2.20	0.42
1:A:503:GLU:O	1:A:757:THR:HG23	2.19	0.42
1:A:763:LYS:O	1:A:766:VAL:HG23	2.19	0.42
3:C:134:ASP:OD1	3:C:136:GLU:HG2	2.19	0.42
1:A:194:ALA:O	1:A:198:CYS:HB3	2.19	0.42
2:B:99:GLN:HB2	2:B:101:THR:HG23	2.01	0.42
3:C:87:MET:HE1	3:C:142:GLU:HB2	2.00	0.42
1:A:377:THR:HG22	1:A:395:LEU:HD11	2.01	0.42
1:A:264:THR:HG21	1:A:439:VAL:HG21	2.02	0.42
1:A:170:GLN:O	1:A:456:ILE:HA	2.20	0.42
1:A:261:ASP:OD1	9:A:1100:HOH:O	2.22	0.42
1:A:415:ASN:ND2	1:A:418:GLN:HG3	2.35	0.42
3:C:36:VAL:HG21	3:C:68:PHE:CZ	2.55	0.42
1:A:522:LEU:CD1	1:A:580:LEU:HD11	2.48	0.41
1:A:126:TYR:CE2	1:A:677:LYS:HA	2.55	0.41
1:A:138:ALA:C	9:A:1104:HOH:O	2.58	0.41
2:B:75:ILE:HG13	2:B:76:PHE:N	2.34	0.41
1:A:819:LEU:HD23	1:A:819:LEU:HA	1.93	0.41
1:A:236:ARG:HB2	8:A:998:GOL:O3	2.20	0.41
2:B:121:ASN:C	2:B:121:ASN:HD22	2.24	0.41
1:A:553:GLN:HB3	9:A:1047:HOH:O	2.20	0.41
1:A:48:ILE:HA	1:A:58:VAL:HG12	2.03	0.41
1:A:723:LEU:HB3	1:A:746:LEU:HD21	2.02	0.41
1:A:137:ILE:CG2	1:A:137:ILE:O	2.69	0.41
1:A:216:GLU:HA	1:A:219:ILE:HD12	2.03	0.41
1:A:227:GLU:O	1:A:231:ASN:HB2	2.20	0.41
1:A:32:LYS:O	1:A:47:GLU:HA	2.20	0.41
1:A:438:LEU:HD23	1:A:438:LEU:O	2.20	0.41
1:A:242:ARG:HD2	1:A:271:ARG:HE	1.85	0.41

Continued on next page...

Continued from previous page...

Atom-1	Atom-2	Interatomic distance (Å)	Clash overlap (Å)
2:B:140:ASP:OD1	2:B:142:VAL:CG2	2.66	0.41
1:A:455:TYR:C	1:A:455:TYR:CD1	2.93	0.41
1:A:234:THR:HG22	1:A:237:ASN:O	2.21	0.41
1:A:273:THR:OG1	1:A:428:LYS:HE2	2.21	0.41
3:C:91:LYS:HE2	3:C:91:LYS:HB3	1.76	0.41
1:A:141:ARG:HB3	1:A:141:ARG:HE	1.69	0.41
1:A:212:GLU:CD	1:A:218:GLN:HE22	2.25	0.41
1:A:404:LYS:HD2	1:A:404:LYS:C	2.42	0.40
1:A:513:GLY:C	9:A:1109:HOH:O	2.59	0.40
1:A:650:ARG:HG2	1:A:650:ARG:NH1	2.36	0.40
2:B:123:ASP:O	2:B:127:MET:HG2	2.21	0.40
1:A:671:ILE:C	1:A:671:ILE:HD12	2.42	0.40
1:A:712:ILE:O	1:A:713:TYR:C	2.59	0.40
1:A:650:ARG:HG2	1:A:650:ARG:HH11	1.85	0.40
1:A:713:TYR:CE2	1:A:756:GLY:O	2.75	0.40
2:B:121:ASN:ND2	2:B:124:GLU:HG3	2.36	0.40
3:C:60:GLU:HB2	9:C:1011:HOH:O	2.22	0.40
3:C:98:GLN:HB2	9:C:1015:HOH:O	2.21	0.40

There are no symmetry-related clashes.

5.3 Torsion angles ⓘ

5.3.1 Protein backbone ⓘ

In the following table, the Percentiles column shows the percent Ramachandran outliers of the chain as a percentile score with respect to all X-ray entries followed by that with respect to entries of similar resolution.

The Analysed column shows the number of residues for which the backbone conformation was analysed, and the total number of residues.

Mol	Chain	Analysed	Favoured	Allowed	Outliers	Percentiles	
1	A	777/837 (93%)	723 (93%)	47 (6%)	7 (1%)	21	24
2	B	137/139 (99%)	124 (90%)	10 (7%)	3 (2%)	8	6
3	C	152/154 (99%)	145 (95%)	7 (5%)	0	100	100
All	All	1066/1130 (94%)	992 (93%)	64 (6%)	10 (1%)	21	24

All (10) Ramachandran outliers are listed below:

Mol	Chain	Res	Type
1	A	17	ARG
1	A	697	LEU
1	A	18	LYS
1	A	20	LEU
1	A	713	TYR
2	B	31	ARG
2	B	49	ARG
1	A	19	LYS
1	A	403	VAL
2	B	64	PRO

5.3.2 Protein sidechains ⓘ

In the following table, the Percentiles column shows the percent sidechain outliers of the chain as a percentile score with respect to all X-ray entries followed by that with respect to entries of similar resolution.

The Analysed column shows the number of residues for which the sidechain conformation was analysed, and the total number of residues.

Mol	Chain	Analysed	Rotameric	Outliers	Percentiles	
1	A	657/730 (90%)	617 (94%)	40 (6%)	23	30
2	B	110/122 (90%)	105 (96%)	5 (4%)	34	46
3	C	120/130 (92%)	116 (97%)	4 (3%)	45	61
All	All	887/982 (90%)	838 (94%)	49 (6%)	27	36

All (49) residues with a non-rotameric sidechain are listed below:

Mol	Chain	Res	Type
1	A	3	ILE
1	A	13	LEU
1	A	17	ARG
1	A	68	THR
1	A	72	ASP
1	A	94	LEU
1	A	127	ARG
1	A	128	ARG
1	A	134	ASP
1	A	144	ARG
1	A	147	GLU
1	A	167	ARG
1	A	173	LEU

Continued on next page...

Continued from previous page...

Mol	Chain	Res	Type
1	A	236	ARG
1	A	269	LYS
1	A	288	ILE
1	A	313	ASN
1	A	338	LEU
1	A	343	GLU
1	A	379	GLU
1	A	393	ASP
1	A	404	LYS
1	A	409	MET
1	A	475	LEU
1	A	485	GLN
1	A	510	ILE
1	A	517	GLN
1	A	519	CYS
1	A	522	LEU
1	A	525	LYS
1	A	543	ASP
1	A	581	HIS
1	A	650	ARG
1	A	651	GLU
1	A	665	PRO
1	A	671	ILE
1	A	694	ASN
1	A	718	GLN
1	A	723	LEU
1	A	755	LEU
2	B	14	GLN
2	B	46	GLN
2	B	68	ASN
2	B	121	ASN
2	B	151	SER
3	C	68	PHE
3	C	69	LEU
3	C	128	LEU
3	C	136	GLU

Some sidechains can be flipped to improve hydrogen bonding and reduce clashes. All (28) such sidechains are listed below:

Mol	Chain	Res	Type
1	A	11	GLN
1	A	33	ASN

Continued on next page...

Continued from previous page...

Mol	Chain	Res	Type
1	A	102	ASN
1	A	158	ASN
1	A	162	ASN
1	A	170	GLN
1	A	218	GLN
1	A	238	ASN
1	A	297	ASN
1	A	313	ASN
1	A	390	ASN
1	A	415	ASN
1	A	417	ASN
1	A	485	GLN
1	A	486	GLN
1	A	491	HIS
1	A	581	HIS
1	A	603	ASN
1	A	605	ASN
1	A	643	GLN
1	A	659	ASN
1	A	694	ASN
1	A	747	GLN
1	A	769	ASN
1	A	814	ASN
2	B	68	ASN
2	B	91	ASN
2	B	121	ASN

5.3.3 RNA ⓘ

There are no RNA molecules in this entry.

5.4 Non-standard residues in protein, DNA, RNA chains ⓘ

There are no non-standard protein/DNA/RNA residues in this entry.

5.5 Carbohydrates ⓘ

There are no carbohydrates in this entry.

5.6 Ligand geometry

Of 6 ligands modelled in this entry, 3 are monoatomic - leaving 3 for Mogul analysis.

In the following table, the Counts columns list the number of bonds (or angles) for which Mogul statistics could be retrieved, the number of bonds (or angles) that are observed in the model and the number of bonds (or angles) that are defined in the chemical component dictionary. The Link column lists molecule types, if any, to which the group is linked. The Z score for a bond length (or angle) is the number of standard deviations the observed value is removed from the expected value. A bond length (or angle) with $|Z| > 2$ is considered an outlier worth inspection. RMSZ is the root-mean-square of all Z scores of the bond lengths (or angles).

Mol	Type	Chain	Res	Link	Bond lengths			Bond angles		
					Counts	RMSZ	# $ Z > 2$	Counts	RMSZ	# $ Z > 2$
6	BEF	A	995	4,7	0,3,3	0.00	-	0,3,3	0.00	-
7	ADP	A	996	4,6	24,29,29	1.72	6 (25%)	23,45,45	0.97	1 (4%)
8	GOL	A	998	-	5,5,5	1.40	1 (20%)	5,5,5	1.05	0

In the following table, the Chirals column lists the number of chiral outliers, the number of chiral centers analysed, the number of these observed in the model and the number defined in the chemical component dictionary. Similar counts are reported in the Torsion and Rings columns. '-' means no outliers of that kind were identified.

Mol	Type	Chain	Res	Link	Chirals	Torsions	Rings
6	BEF	A	995	4,7	-	0/0/0/0	0/0/0/0
7	ADP	A	996	4,6	-	0/12/32/32	0/3/3/3
8	GOL	A	998	-	-	0/4/4/4	0/0/0/0

All (7) bond length outliers are listed below:

Mol	Chain	Res	Type	Atoms	Z	Observed(Å)	Ideal(Å)
7	A	996	ADP	PA-O5'	-3.45	1.44	1.59
7	A	996	ADP	C8-N7	-2.61	1.29	1.34
7	A	996	ADP	PB-O2B	-2.59	1.45	1.54
7	A	996	ADP	PA-O2A	-2.17	1.45	1.55
8	A	998	GOL	C3-C2	2.46	1.61	1.52
7	A	996	ADP	O4'-C1'	2.91	1.45	1.41
7	A	996	ADP	C4-N3	3.90	1.41	1.35

All (1) bond angle outliers are listed below:

Mol	Chain	Res	Type	Atoms	Z	Observed(°)	Ideal(°)
7	A	996	ADP	C4'-O4'-C1'	2.35	112.14	109.64

There are no chirality outliers.

There are no torsion outliers.

There are no ring outliers.

1 monomer is involved in 9 short contacts:

Mol	Chain	Res	Type	Clashes	Symm-Clashes
8	A	998	GOL	9	0

5.7 Other polymers [i](#)

There are no such residues in this entry.

5.8 Polymer linkage issues [i](#)

There are no chain breaks in this entry.

6 Fit of model and data ⓘ

6.1 Protein, DNA and RNA chains ⓘ

In the following table, the column labelled ‘#RSRZ> 2’ contains the number (and percentage) of RSRZ outliers, followed by percent RSRZ outliers for the chain as percentile scores relative to all X-ray entries and entries of similar resolution. The OWAB column contains the minimum, median, 95th percentile and maximum values of the occupancy-weighted average B-factor per residue. The column labelled ‘Q< 0.9’ lists the number of (and percentage) of residues with an average occupancy less than 0.9.

Mol	Chain	Analysed	<RSRZ>	#RSRZ>2		OWAB(Å ²)	Q<0.9
1	A	793/837 (94%)	0.45	54 (6%)	20 28	29, 51, 87, 99	3 (0%)
2	B	139/139 (100%)	0.35	10 (7%)	18 26	39, 62, 89, 96	0
3	C	154/154 (100%)	0.17	1 (0%)	90 93	37, 54, 79, 88	1 (0%)
All	All	1086/1130 (96%)	0.39	65 (5%)	25 33	29, 53, 87, 99	4 (0%)

All (65) RSRZ outliers are listed below:

Mol	Chain	Res	Type	RSRZ
1	A	1	MET	5.7
2	B	15	LYS	5.0
1	A	210	LYS	4.4
1	A	17	ARG	4.2
1	A	3	ILE	4.1
2	B	17	ILE	4.1
1	A	2	ASN	4.0
1	A	566	GLY	3.6
1	A	18	LYS	3.5
1	A	5	PHE	3.5
1	A	737	THR	3.5
1	A	172	CYS	3.4
2	B	14	GLN	3.3
1	A	155	VAL	3.2
1	A	403	VAL	3.2
1	A	174	ILE	3.2
1	A	459	LEU	3.2
1	A	477	ILE	3.1
2	B	82	GLY	3.1
1	A	736	LYS	3.0
1	A	526	PRO	3.0
2	B	16	GLN	3.0
2	B	38	GLU	3.0

Continued on next page...

Continued from previous page...

Mol	Chain	Res	Type	RSRZ
1	A	386	LEU	2.8
1	A	458	VAL	2.8
1	A	190	ILE	2.8
1	A	750	PRO	2.7
1	A	6	SER	2.7
1	A	8	PRO	2.7
1	A	120	CYS	2.7
1	A	538	MET	2.7
1	A	226	LEU	2.7
2	B	150	GLY	2.7
1	A	20	LEU	2.6
1	A	371	GLN	2.5
2	B	18	GLN	2.5
1	A	735	GLY	2.5
2	B	26	MET	2.4
1	A	512	PHE	2.4
1	A	542	ALA	2.4
2	B	67	LEU	2.4
1	A	121	ILE	2.3
1	A	505	ILE	2.3
1	A	514	MET	2.3
1	A	299	VAL	2.3
1	A	734	ASP	2.3
1	A	739	SER	2.3
1	A	351	CYS	2.2
1	A	409	MET	2.2
1	A	354	SER	2.2
1	A	152	LEU	2.2
1	A	399	LEU	2.2
1	A	348	MET	2.2
1	A	189	VAL	2.1
1	A	755	LEU	2.1
1	A	410	VAL	2.1
1	A	173	LEU	2.1
1	A	545	LYS	2.1
1	A	16	ASP	2.1
1	A	15	VAL	2.0
1	A	565	PRO	2.0
1	A	747	GLN	2.0
1	A	751	ALA	2.0
1	A	476	CYS	2.0
3	C	69	LEU	2.0

6.2 Non-standard residues in protein, DNA, RNA chains [i](#)

There are no non-standard protein/DNA/RNA residues in this entry.

6.3 Carbohydrates [i](#)

There are no carbohydrates in this entry.

6.4 Ligands [i](#)

In the following table, the Atoms column lists the number of modelled atoms in the group and the number defined in the chemical component dictionary. LLDF column lists the quality of electron density of the group with respect to its neighbouring residues in protein, DNA or RNA chains. The B-factors column lists the minimum, median, 95th percentile and maximum values of B factors of atoms in the group. The column labelled 'Q< 0.9' lists the number of atoms with occupancy less than 0.9.

Mol	Type	Chain	Res	Atoms	RSCC	RSR	LLDF	B-factors(Å ²)	Q<0.9
6	BEF	A	995	4/4	0.92	0.32	2.61	33,35,36,39	0
8	GOL	A	998	6/6	0.86	0.17	0.63	55,56,58,59	0
4	MG	A	997	1/1	0.93	0.18	0.08	29,29,29,29	0
7	ADP	A	996	27/27	0.97	0.14	-0.80	32,34,36,39	0
5	CA	C	999	1/1	0.99	0.08	-1.82	44,44,44,44	0
4	MG	B	998	1/1	0.95	0.08	-1.84	61,61,61,61	0

6.5 Other polymers [i](#)

There are no such residues in this entry.