



# wwPDB X-ray Structure Validation Summary Report ⓘ

Feb 7, 2017 – 03:36 PM EST

PDB ID : 5KKH  
Title : 2.1-Angstrom In situ Mylar structure of bacteriorhodopsin from *Haloquadratum walsbyi* (HwBR) at 100 K  
Authors : Broecker, J.; Ernst, O.P.  
Deposited on : 2016-06-21  
Resolution : 2.12 Å(reported)

This is a wwPDB X-ray Structure Validation Summary Report for a publicly released PDB entry.

We welcome your comments at [validation@mail.wwpdb.org](mailto:validation@mail.wwpdb.org)

A user guide is available at

<http://wwpdb.org/validation/2016/XrayValidationReportHelp>

with specific help available everywhere you see the ⓘ symbol.

---

The following versions of software and data (see [references ⓘ](#)) were used in the production of this report:

MolProbity : 4.02b-467  
Mogul : 1.7.1 (RC1), CSD as537be (2016)  
Xtriage (Phenix) : 1.9-1692  
EDS : rb-20028442  
Percentile statistics : 20151230.v01 (using entries in the PDB archive December 30th 2015)  
Refmac : 5.8.0135  
CCP4 : 6.5.0  
Ideal geometry (proteins) : Engh & Huber (2001)  
Ideal geometry (DNA, RNA) : Parkinson et al. (1996)  
Validation Pipeline (wwPDB-VP) : rb-20028442

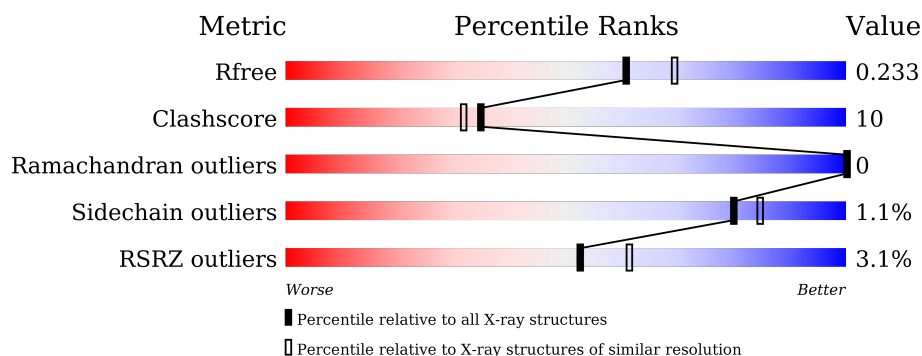
# 1 Overall quality at a glance

The following experimental techniques were used to determine the structure:

*X-RAY DIFFRACTION*

The reported resolution of this entry is 2.12 Å.

Percentile scores (ranging between 0-100) for global validation metrics of the entry are shown in the following graphic. The table shows the number of entries on which the scores are based.



Metric	Whole archive (#Entries)	Similar resolution (#Entries, resolution range(Å))
$R_{free}$	91344	4587 (2.14-2.10)
Clashscore	102246	5132 (2.14-2.10)
Ramachandran outliers	100387	5080 (2.14-2.10)
Sidechain outliers	100360	5081 (2.14-2.10)
RSRZ outliers	91569	4597 (2.14-2.10)

The table below summarises the geometric issues observed across the polymeric chains and their fit to the electron density. The red, orange, yellow and green segments on the lower bar indicate the fraction of residues that contain outliers for  $\geq 3$ , 2, 1 and 0 types of geometric quality criteria. A grey segment represents the fraction of residues that are not modelled. The numeric value for each fraction is indicated below the corresponding segment, with a dot representing fractions  $\leq 5\%$ . The upper red bar (where present) indicates the fraction of residues that have poor fit to the electron density. The numeric value is given above the bar.

Mol	Chain	Length	Quality of chain
1	A	268	<div> <div>3%</div> <div>74%</div> <div>11%</div> <div>15%</div> </div>
1	B	268	<div> <div>2%</div> <div>69%</div> <div>16%</div> <div>15%</div> </div>
1	C	268	<div> <div>2%</div> <div>68%</div> <div>17%</div> <div>15%</div> </div>

The following table lists non-polymeric compounds, carbohydrate monomers and non-standard residues in protein, DNA, RNA chains that are outliers for geometric or electron-density-fit criteria:

Mol	Type	Chain	Res	Chirality	Geometry	Clashes	Electron density
2	OLC	A	301	-	-	-	X
2	OLC	A	303	-	-	-	X
2	OLC	B	302	-	-	-	X
2	OLC	C	301	-	-	-	X
2	OLC	C	302	-	-	-	X
3	OLB	A	302	-	-	-	X
3	OLB	B	303	-	-	-	X
3	OLB	C	303	-	-	-	X

## 2 Entry composition [i](#)

There are 5 unique types of molecules in this entry. The entry contains 5692 atoms, of which 0 are hydrogens and 0 are deuteriums.

In the tables below, the ZeroOcc column contains the number of atoms modelled with zero occupancy, the AltConf column contains the number of residues with at least one atom in alternate conformation and the Trace column contains the number of residues modelled with at most 2 atoms.

- Molecule 1 is a protein called Bacteriorhodopsin-I.

Mol	Chain	Residues	Atoms					ZeroOcc	AltConf	Trace
1	A	228	Total	C	N	O	S	0	3	0
			1776	1184	273	312	7			
1	B	228	Total	C	N	O	S	0	3	0
			1772	1181	271	313	7			
1	C	228	Total	C	N	O	S	0	3	0
			1775	1182	272	314	7			

There are 42 discrepancies between the modelled and reference sequences:

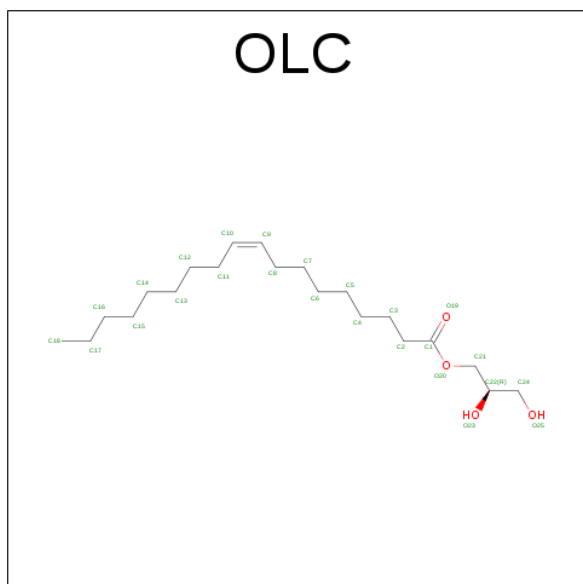
Chain	Residue	Modelled	Actual	Comment	Reference
A	255	LEU	-	expression tag	UNP Q18DH8
A	256	VAL	-	expression tag	UNP Q18DH8
A	257	PRO	-	expression tag	UNP Q18DH8
A	258	ARG	-	expression tag	UNP Q18DH8
A	259	GLY	-	expression tag	UNP Q18DH8
A	260	SER	-	expression tag	UNP Q18DH8
A	261	LEU	-	expression tag	UNP Q18DH8
A	262	GLU	-	expression tag	UNP Q18DH8
A	263	HIS	-	expression tag	UNP Q18DH8
A	264	HIS	-	expression tag	UNP Q18DH8
A	265	HIS	-	expression tag	UNP Q18DH8
A	266	HIS	-	expression tag	UNP Q18DH8
A	267	HIS	-	expression tag	UNP Q18DH8
A	268	HIS	-	expression tag	UNP Q18DH8
B	255	LEU	-	expression tag	UNP Q18DH8
B	256	VAL	-	expression tag	UNP Q18DH8
B	257	PRO	-	expression tag	UNP Q18DH8
B	258	ARG	-	expression tag	UNP Q18DH8
B	259	GLY	-	expression tag	UNP Q18DH8
B	260	SER	-	expression tag	UNP Q18DH8
B	261	LEU	-	expression tag	UNP Q18DH8
B	262	GLU	-	expression tag	UNP Q18DH8
B	263	HIS	-	expression tag	UNP Q18DH8

*Continued on next page...*

*Continued from previous page...*

Chain	Residue	Modelled	Actual	Comment	Reference
B	264	HIS	-	expression tag	UNP Q18DH8
B	265	HIS	-	expression tag	UNP Q18DH8
B	266	HIS	-	expression tag	UNP Q18DH8
B	267	HIS	-	expression tag	UNP Q18DH8
B	268	HIS	-	expression tag	UNP Q18DH8
C	255	LEU	-	expression tag	UNP Q18DH8
C	256	VAL	-	expression tag	UNP Q18DH8
C	257	PRO	-	expression tag	UNP Q18DH8
C	258	ARG	-	expression tag	UNP Q18DH8
C	259	GLY	-	expression tag	UNP Q18DH8
C	260	SER	-	expression tag	UNP Q18DH8
C	261	LEU	-	expression tag	UNP Q18DH8
C	262	GLU	-	expression tag	UNP Q18DH8
C	263	HIS	-	expression tag	UNP Q18DH8
C	264	HIS	-	expression tag	UNP Q18DH8
C	265	HIS	-	expression tag	UNP Q18DH8
C	266	HIS	-	expression tag	UNP Q18DH8
C	267	HIS	-	expression tag	UNP Q18DH8
C	268	HIS	-	expression tag	UNP Q18DH8

- Molecule 2 is (2R)-2,3-dihydroxypropyl (9Z)-octadec-9-enoate (three-letter code: OLC) (formula: C<sub>21</sub>H<sub>40</sub>O<sub>4</sub>).



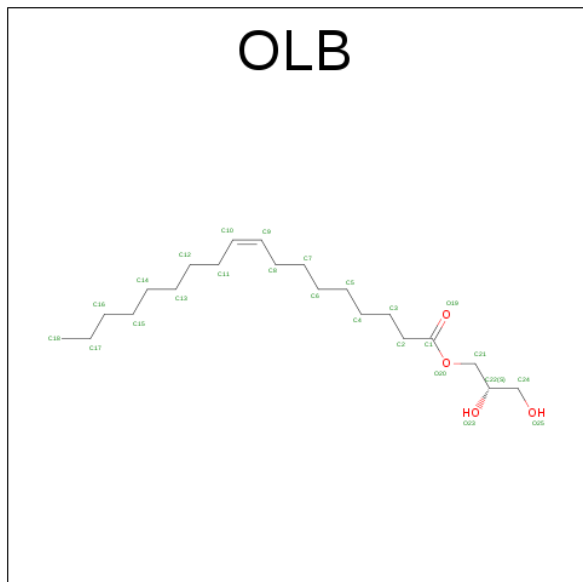
Mol	Chain	Residues	Atoms			ZeroOcc	AltConf
2	A	1	Total	C	O	0	0
			25	21	4		

*Continued on next page...*

*Continued from previous page...*

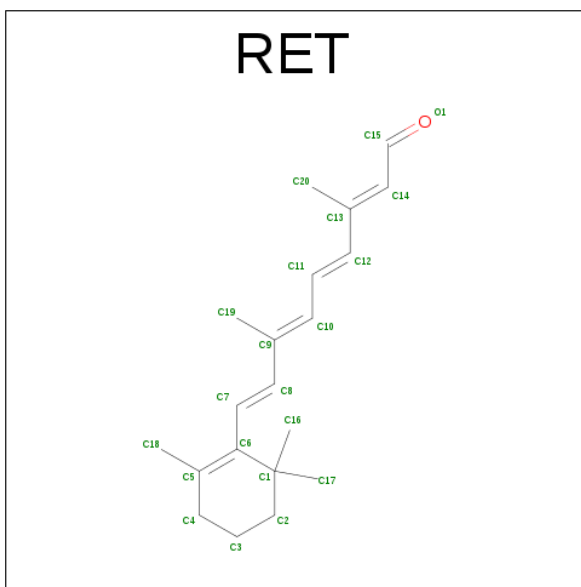
Mol	Chain	Residues	Atoms			ZeroOcc	AltConf
2	A	1	Total	C	O	0	0
			25	21	4		
2	B	1	Total	C	O	0	0
			25	21	4		
2	B	1	Total	C	O	0	0
			25	21	4		
2	C	1	Total	C	O	0	0
			25	21	4		
2	C	1	Total	C	O	0	0
			25	21	4		

- Molecule 3 is (2S)-2,3-dihydroxypropyl (9Z)-octadec-9-enoate (three-letter code: OLB) (formula: C<sub>21</sub>H<sub>40</sub>O<sub>4</sub>).



Mol	Chain	Residues	Atoms			ZeroOcc	AltConf
3	A	1	Total	C	O	0	0
			25	21	4		
3	B	1	Total	C	O	0	0
			25	21	4		
3	C	1	Total	C	O	0	0
			25	21	4		

- Molecule 4 is RETINAL (three-letter code: RET) (formula: C<sub>20</sub>H<sub>28</sub>O).



Mol	Chain	Residues	Atoms	ZeroOcc	AltConf
4	A	1	Total C 20 20	0	0
4	B	1	Total C 20 20	0	0
4	C	1	Total C 20 20	0	0


- Molecule 5 is water.

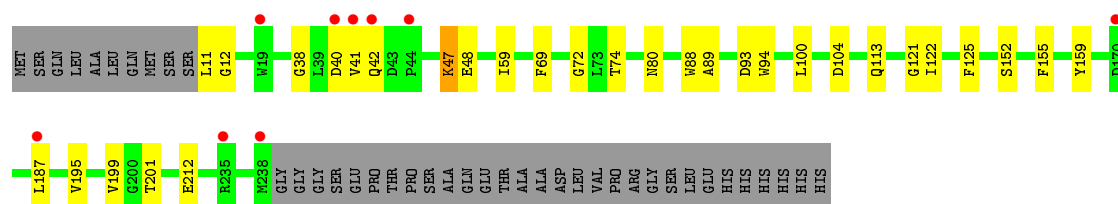
Mol	Chain	Residues	Atoms	ZeroOcc	AltConf
5	A	32	Total O 32 32	0	0
5	B	22	Total O 22 22	0	0
5	C	30	Total O 30 30	0	0

### 3 Residue-property plots [i](#)

These plots are drawn for all protein, RNA and DNA chains in the entry. The first graphic for a chain summarises the proportions of errors displayed in the second graphic. The second graphic shows the sequence view annotated by issues in geometry and electron density. Residues are color-coded according to the number of geometric quality criteria for which they contain at least one outlier: green = 0, yellow = 1, orange = 2 and red = 3 or more. A red dot above a residue indicates a poor fit to the electron density ( $RSRZ > 2$ ). Stretches of 2 or more consecutive residues without any outlier are shown as a green connector. Residues present in the sample, but not in the model, are shown in grey.

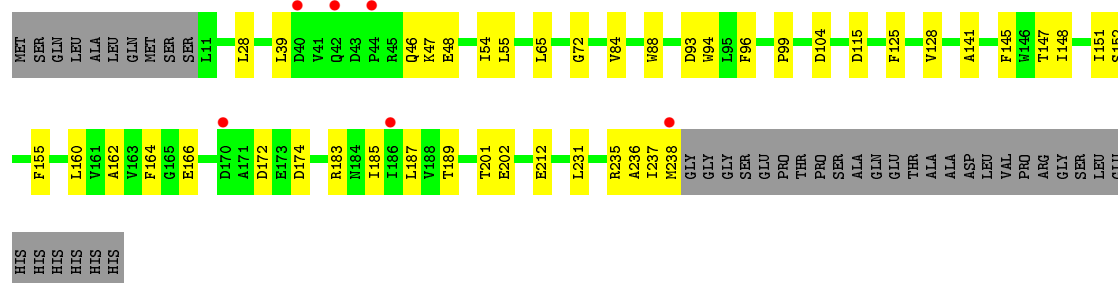
#### • Molecule 1: Bacteriorhodopsin-I

Chain A: 



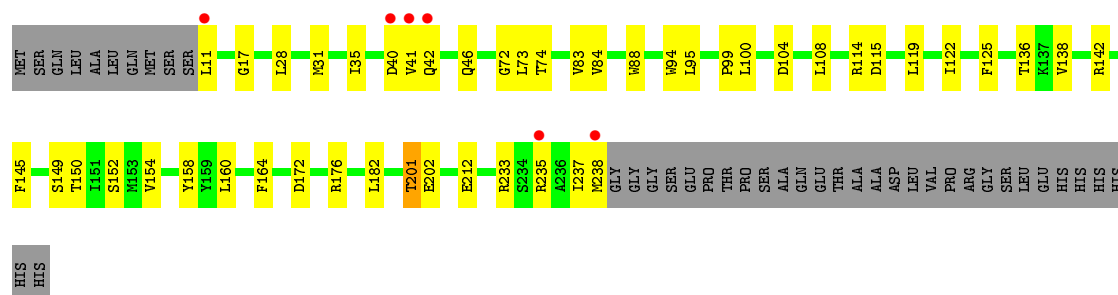
#### • Molecule 1: Bacteriorhodopsin-I

Chain B: 



#### • Molecule 1: Bacteriorhodopsin-I

Chain C: 





## 4 Data and refinement statistics

Property	Value	Source
Space group	C 1 2 1	Depositor
Cell constants a, b, c, $\alpha$ , $\beta$ , $\gamma$	106.11Å 61.27Å 119.03Å 90.00° 116.26° 90.00°	Depositor
Resolution (Å)	29.45 – 2.12 29.45 – 2.12	Depositor EDS
% Data completeness (in resolution range)	90.8 (29.45-2.12) 90.8 (29.45-2.12)	Depositor EDS
$R_{merge}$	0.11	Depositor
$R_{sym}$	(Not available)	Depositor
$\langle I/\sigma(I) \rangle$ <sup>1</sup>	1.08 (at 2.12Å)	Xtriage
Refinement program	PHENIX (1.10.1_2155: ???)	Depositor
R, $R_{free}$	0.213 , 0.233 0.223 , 0.233	Depositor DCC
$R_{free}$ test set	1755 reflections (4.98%)	DCC
Wilson B-factor (Å <sup>2</sup> )	14.9	Xtriage
Anisotropy	0.342	Xtriage
Bulk solvent $k_{sol}$ (e/Å <sup>3</sup> ), $B_{sol}$ (Å <sup>2</sup> )	0.39 , 72.8	EDS
L-test for twinning <sup>2</sup>	$\langle  L  \rangle = 0.49$ , $\langle L^2 \rangle = 0.32$	Xtriage
Estimated twinning fraction	0.032 for h,-k,-h-l	Xtriage
$F_o, F_c$ correlation	0.89	EDS
Total number of atoms	5692	wwPDB-VP
Average B, all atoms (Å <sup>2</sup> )	18.0	wwPDB-VP

Xtriage's analysis on translational NCS is as follows: *The analyses of the Patterson function reveals a significant off-origin peak that is 23.54 % of the origin peak, indicating pseudo translational symmetry. The chance of finding a peak of this or larger height randomly in a structure without pseudo translational symmetry is equal to 4.5712e-03. The detected translational NCS is most likely also responsible for the elevated intensity ratio.*

<sup>1</sup> Intensities estimated from amplitudes.

<sup>2</sup> Theoretical values of  $\langle |L| \rangle$ ,  $\langle L^2 \rangle$  for acentric reflections are 0.5, 0.333 respectively for untwinned datasets, and 0.375, 0.2 for perfectly twinned datasets.

## 5 Model quality [i](#)

### 5.1 Standard geometry [i](#)

Bond lengths and bond angles in the following residue types are not validated in this section: OLB, OLC, RET

The Z score for a bond length (or angle) is the number of standard deviations the observed value is removed from the expected value. A bond length (or angle) with  $|Z| > 5$  is considered an outlier worth inspection. RMSZ is the root-mean-square of all Z scores of the bond lengths (or angles).

Mol	Chain	Bond lengths		Bond angles	
		RMSZ	$\# Z  > 5$	RMSZ	$\# Z  > 5$
1	A	0.43	0/1824	0.61	0/2488
1	B	0.43	0/1817	0.60	1/2480 (0.0%)
1	C	0.45	0/1817	0.60	0/2480
All	All	0.44	0/5458	0.60	1/7448 (0.0%)

There are no bond length outliers.

All (1) bond angle outliers are listed below:

Mol	Chain	Res	Type	Atoms	Z	Observed(°)	Ideal(°)
1	B	93	ASP	CB-CG-OD1	6.27	123.94	118.30

There are no chirality outliers.

There are no planarity outliers.

### 5.2 Too-close contacts [i](#)

In the following table, the Non-H and H(model) columns list the number of non-hydrogen atoms and hydrogen atoms in the chain respectively. The H(added) column lists the number of hydrogen atoms added and optimized by MolProbity. The Clashes column lists the number of clashes within the asymmetric unit, whereas Symm-Clashes lists symmetry related clashes.

Mol	Chain	Non-H	H(model)	H(added)	Clashes	Symm-Clashes
1	A	1776	0	1831	31	1
1	B	1772	0	1823	36	0
1	C	1775	0	1822	35	1
2	A	50	0	80	8	0
2	B	50	0	80	2	0
2	C	50	0	80	6	0
3	A	25	0	40	9	0

*Continued on next page...*

*Continued from previous page...*

Mol	Chain	Non-H	H(model)	H(added)	Clashes	Symm-Clashes
3	B	25	0	40	6	0
3	C	25	0	40	4	0
4	A	20	0	27	5	0
4	B	20	0	27	4	0
4	C	20	0	27	2	0
5	A	32	0	0	2	0
5	B	22	0	0	2	0
5	C	30	0	0	4	0
All	All	5692	0	5917	114	1

The all-atom clashscore is defined as the number of clashes found per 1000 atoms (including hydrogen atoms). The all-atom clashscore for this structure is 10.

The worst 5 of 114 close contacts within the same asymmetric unit are listed below, sorted by their clash magnitude.

Atom-1	Atom-2	Interatomic distance (Å)	Clash overlap (Å)
1:A:155:PHE:HZ	3:A:302:OLB:H19	1.28	0.98
1:C:115:ASP:OD2	5:C:401:HOH:O	1.87	0.91
1:B:47:LYS:NZ	3:B:303:OLB:O25	2.06	0.88
1:C:41:VAL:O	1:C:42:GLN:NE2	2.14	0.78
1:B:145:PHE:HA	1:B:148:ILE:HG22	1.63	0.77

All (1) symmetry-related close contacts are listed below. The label for Atom-2 includes the symmetry operator and encoded unit-cell translations to be applied.

Atom-1	Atom-2	Interatomic distance (Å)	Clash overlap (Å)
1:A:40:ASP:OD2	1:C:233:ARG:NH2[3_545]	2.16	0.04

## 5.3 Torsion angles [i](#)

### 5.3.1 Protein backbone [i](#)

In the following table, the Percentiles column shows the percent Ramachandran outliers of the chain as a percentile score with respect to all X-ray entries followed by that with respect to entries of similar resolution.

The Analysed column shows the number of residues for which the backbone conformation was analysed, and the total number of residues.

Mol	Chain	Analysed	Favoured	Allowed	Outliers	Percentiles	
1	A	229/268 (85%)	227 (99%)	2 (1%)	0	100	100
1	B	229/268 (85%)	226 (99%)	3 (1%)	0	100	100
1	C	229/268 (85%)	227 (99%)	2 (1%)	0	100	100
All	All	687/804 (85%)	680 (99%)	7 (1%)	0	100	100

There are no Ramachandran outliers to report.

### 5.3.2 Protein sidechains ⓘ

In the following table, the Percentiles column shows the percent sidechain outliers of the chain as a percentile score with respect to all X-ray entries followed by that with respect to entries of similar resolution.

The Analysed column shows the number of residues for which the sidechain conformation was analysed, and the total number of residues.

Mol	Chain	Analysed	Rotameric	Outliers	Percentiles	
1	A	184/213 (86%)	182 (99%)	2 (1%)	80	85
1	B	184/213 (86%)	183 (100%)	1 (0%)	92	95
1	C	184/213 (86%)	180 (98%)	4 (2%)	60	63
All	All	552/639 (86%)	545 (99%)	7 (1%)	80	81

5 of 7 residues with a non-rotameric sidechain are listed below:

Mol	Chain	Res	Type
1	C	40	ASP
1	C	201[B]	THR
1	C	104	ASP
1	A	104	ASP
1	C	201[A]	THR

Some sidechains can be flipped to improve hydrogen bonding and reduce clashes. All (1) such sidechains are listed below:

Mol	Chain	Res	Type
1	A	46	GLN

### 5.3.3 RNA ⓘ

There are no RNA molecules in this entry.

## 5.4 Non-standard residues in protein, DNA, RNA chains ⓘ

There are no non-standard protein/DNA/RNA residues in this entry.

## 5.5 Carbohydrates ⓘ

There are no carbohydrates in this entry.

## 5.6 Ligand geometry ⓘ

12 ligands are modelled in this entry.

In the following table, the Counts columns list the number of bonds (or angles) for which Mogul statistics could be retrieved, the number of bonds (or angles) that are observed in the model and the number of bonds (or angles) that are defined in the chemical component dictionary. The Link column lists molecule types, if any, to which the group is linked. The Z score for a bond length (or angle) is the number of standard deviations the observed value is removed from the expected value. A bond length (or angle) with  $|Z| > 2$  is considered an outlier worth inspection. RMSZ is the root-mean-square of all Z scores of the bond lengths (or angles).

Mol	Type	Chain	Res	Link	Bond lengths			Bond angles		
					Counts	RMSZ	$\# Z  > 2$	Counts	RMSZ	$\# Z  > 2$
2	OLC	A	301	-	24,24,24	0.92	1 (4%)	25,25,25	1.08	2 (8%)
3	OLB	A	302	-	24,24,24	0.92	1 (4%)	25,25,25	0.89	0
2	OLC	A	303	-	24,24,24	0.92	1 (4%)	25,25,25	1.03	1 (4%)
4	RET	A	304	1	19,20,21	0.76	1 (5%)	27,27,28	1.59	6 (22%)
2	OLC	B	301	-	24,24,24	0.93	1 (4%)	25,25,25	1.01	1 (4%)
2	OLC	B	302	-	24,24,24	0.91	1 (4%)	25,25,25	0.91	1 (4%)
3	OLB	B	303	-	24,24,24	0.92	1 (4%)	25,25,25	1.00	1 (4%)
4	RET	B	304	1	19,20,21	0.76	1 (5%)	27,27,28	1.91	7 (25%)
2	OLC	C	301	-	24,24,24	0.92	1 (4%)	25,25,25	0.98	1 (4%)
2	OLC	C	302	-	24,24,24	0.93	1 (4%)	25,25,25	1.11	2 (8%)
3	OLB	C	303	-	24,24,24	0.92	1 (4%)	25,25,25	0.84	0
4	RET	C	304	1	19,20,21	0.76	1 (5%)	27,27,28	1.45	4 (14%)

In the following table, the Chirals column lists the number of chiral outliers, the number of chiral centers analysed, the number of these observed in the model and the number defined in the chemical component dictionary. Similar counts are reported in the Torsion and Rings columns. '-' means no outliers of that kind were identified.

Mol	Type	Chain	Res	Link	Chirals	Torsions	Rings
2	OLC	A	301	-	-	0/24/24/24	0/0/0/0
3	OLB	A	302	-	-	0/24/24/24	0/0/0/0
2	OLC	A	303	-	-	0/24/24/24	0/0/0/0
4	RET	A	304	1	-	0/13/30/31	0/1/1/1
2	OLC	B	301	-	-	0/24/24/24	0/0/0/0
2	OLC	B	302	-	-	0/24/24/24	0/0/0/0
3	OLB	B	303	-	-	0/24/24/24	0/0/0/0
4	RET	B	304	1	-	0/13/30/31	0/1/1/1
2	OLC	C	301	-	-	0/24/24/24	0/0/0/0
2	OLC	C	302	-	-	0/24/24/24	0/0/0/0
3	OLB	C	303	-	-	0/24/24/24	0/0/0/0
4	RET	C	304	1	-	0/13/30/31	0/1/1/1

The worst 5 of 12 bond length outliers are listed below:

Mol	Chain	Res	Type	Atoms	Z	Observed(Å)	Ideal(Å)
4	B	304	RET	C11-C10	-2.76	1.35	1.43
4	C	304	RET	C11-C10	-2.68	1.35	1.43
4	A	304	RET	C11-C10	-2.61	1.35	1.43
2	A	301	OLC	O20-C1	3.42	1.43	1.33
3	C	303	OLB	O20-C1	3.43	1.43	1.33

The worst 5 of 26 bond angle outliers are listed below:

Mol	Chain	Res	Type	Atoms	Z	Observed(°)	Ideal(°)
4	B	304	RET	C18-C5-C6	-4.44	119.89	124.62
4	B	304	RET	C10-C11-C12	-4.05	110.60	123.11
4	B	304	RET	C3-C4-C5	-3.59	107.92	113.87
4	B	304	RET	C7-C8-C9	-3.21	121.36	126.21
4	C	304	RET	C3-C4-C5	-3.19	108.58	113.87

There are no chirality outliers.

There are no torsion outliers.

There are no ring outliers.

12 monomers are involved in 44 short contacts:

Mol	Chain	Res	Type	Clashes	Symm-Clashes
2	A	301	OLC	6	0
3	A	302	OLB	9	0
2	A	303	OLC	2	0
4	A	304	RET	5	0

*Continued on next page...*

*Continued from previous page...*

Mol	Chain	Res	Type	Clashes	Symm-Clashes
2	B	301	OLC	1	0
2	B	302	OLC	1	0
3	B	303	OLB	6	0
4	B	304	RET	4	0
2	C	301	OLC	5	0
2	C	302	OLC	1	0
3	C	303	OLB	4	0
4	C	304	RET	2	0

## 5.7 Other polymers [i](#)

There are no such residues in this entry.

## 5.8 Polymer linkage issues [i](#)

There are no chain breaks in this entry.

## 6 Fit of model and data [i](#)

### 6.1 Protein, DNA and RNA chains [i](#)

In the following table, the column labelled ‘#RSRZ> 2’ contains the number (and percentage) of RSRZ outliers, followed by percent RSRZ outliers for the chain as percentile scores relative to all X-ray entries and entries of similar resolution. The OWAB column contains the minimum, median, 95<sup>th</sup> percentile and maximum values of the occupancy-weighted average B-factor per residue. The column labelled ‘Q< 0.9’ lists the number of (and percentage) of residues with an average occupancy less than 0.9.

Mol	Chain	Analysed	<RSRZ>	#RSRZ>2	OWAB(Å <sup>2</sup> )	Q<0.9
1	A	228/268 (85%)	0.27	9 (3%) 43 52	6, 15, 31, 49	0
1	B	228/268 (85%)	0.20	6 (2%) 59 66	6, 15, 30, 46	0
1	C	228/268 (85%)	0.24	6 (2%) 59 66	6, 15, 30, 48	0
All	All	684/804 (85%)	0.24	21 (3%) 52 61	6, 15, 31, 49	0

The worst 5 of 21 RSRZ outliers are listed below:

Mol	Chain	Res	Type	RSRZ
1	C	11	LEU	5.0
1	A	40	ASP	4.5
1	A	42	GLN	4.4
1	C	41	VAL	3.9
1	C	238	MET	3.6

### 6.2 Non-standard residues in protein, DNA, RNA chains [i](#)

There are no non-standard protein/DNA/RNA residues in this entry.

### 6.3 Carbohydrates [i](#)

There are no carbohydrates in this entry.

### 6.4 Ligands [i](#)

In the following table, the Atoms column lists the number of modelled atoms in the group and the number defined in the chemical component dictionary. LLDF column lists the quality of electron density of the group with respect to its neighbouring residues in protein, DNA or RNA chains. The B-factors column lists the minimum, median, 95<sup>th</sup> percentile and maximum values of B factors



of atoms in the group. The column labelled 'Q< 0.9' lists the number of atoms with occupancy less than 0.9.

Mol	Type	Chain	Res	Atoms	RSCC	RSR	LLDF	B-factors( $\text{\AA}^2$ )	Q<0.9
2	OLC	A	303	25/25	0.53	0.32	4.98	21,42,63,72	0
3	OLB	B	303	25/25	0.77	0.22	4.51	15,30,46,56	0
2	OLC	A	301	25/25	0.74	0.24	4.17	22,30,35,45	0
3	OLB	C	303	25/25	0.69	0.24	3.83	19,36,53,56	0
3	OLB	A	302	25/25	0.73	0.24	3.50	17,34,52,58	0
2	OLC	B	302	25/25	0.75	0.26	3.29	15,34,45,66	0
2	OLC	C	301	25/25	0.75	0.24	2.38	17,35,45,52	0
2	OLC	C	302	25/25	0.79	0.26	2.26	16,29,47,64	0
4	RET	C	304	20/21	0.91	0.17	1.61	6,10,15,16	0
4	RET	A	304	20/21	0.90	0.16	1.35	6,9,15,15	0
2	OLC	B	301	25/25	0.84	0.18	1.11	19,34,39,52	0
4	RET	B	304	20/21	0.91	0.15	0.85	4,9,19,20	0

## 6.5 Other polymers

There are no such residues in this entry.