



# Full wwPDB X-ray Structure Validation Report ⓘ

Jan 31, 2016 – 08:31 PM GMT

PDB ID : 1KNY  
Title : KANAMYCIN NUCLEOTIDYLTRANSFERASE  
Authors : Pedersen, L.C.; Benning, M.M.; Holden, H.M.  
Deposited on : 1995-07-07  
Resolution : 2.50 Å(reported)

This is a Full wwPDB X-ray Structure Validation Report for a publicly released PDB entry.  
We welcome your comments at [validation@mail.wwpdb.org](mailto:validation@mail.wwpdb.org)  
A user guide is available at  
<http://wwpdb.org/validation/2016/XrayValidationReportHelp>  
with specific help available everywhere you see the ⓘ symbol.

---

The following versions of software and data (see [references ⓘ](#)) were used in the production of this report:

MolProbity : 4.02b-467  
Mogul : 1.7 (RC4), CSD as536be (2015)  
Xtriage (Phenix) : **NOT EXECUTED**  
EDS : **NOT EXECUTED**  
Percentile statistics : 20151230.v01 (using entries in the PDB archive December 30th 2015)  
Ideal geometry (proteins) : Engh & Huber (2001)  
Ideal geometry (DNA, RNA) : Parkinson et al. (1996)  
Validation Pipeline (wwPDB-VP) : trunk26865

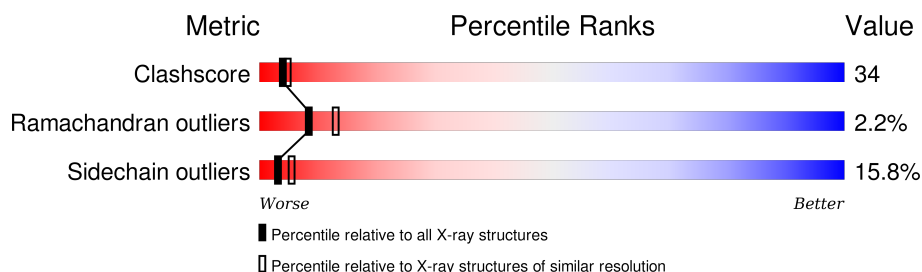
# 1 Overall quality at a glance

The following experimental techniques were used to determine the structure:

*X-RAY DIFFRACTION*

The reported resolution of this entry is 2.50 Å.

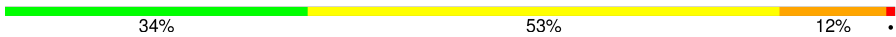
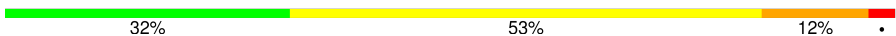
Percentile scores (ranging between 0-100) for global validation metrics of the entry are shown in the following graphic. The table shows the number of entries on which the scores are based.



Metric	Whole archive (#Entries)	Similar resolution (#Entries, resolution range(Å))
Clashscore	102246	4242 (2.50-2.50)
Ramachandran outliers	100387	4156 (2.50-2.50)
Sidechain outliers	100360	4158 (2.50-2.50)

The table below summarises the geometric issues observed across the polymeric chains and their fit to the electron density. The red, orange, yellow and green segments on the lower bar indicate the fraction of residues that contain outliers for  $\geq 3$ , 2, 1 and 0 types of geometric quality criteria. A grey segment represents the fraction of residues that are not modelled. The numeric value for each fraction is indicated below the corresponding segment, with a dot representing fractions  $\leq 5\%$ . The upper red bar (where present) indicates the fraction of residues that have poor fit to the electron density. The numeric value is given above the bar.

Note EDS was not executed.

Mol	Chain	Length	Quality of chain
1	A	253	
1	B	253	

## 2 Entry composition

There are 5 unique types of molecules in this entry. The entry contains 4231 atoms, of which 0 are hydrogens and 0 are deuteriums.

In the tables below, the ZeroOcc column contains the number of atoms modelled with zero occupancy, the AltConf column contains the number of residues with at least one atom in alternate conformation and the Trace column contains the number of residues modelled with at most 2 atoms.

- Molecule 1 is a protein called KANAMYCIN NUCLEOTIDYLTRANSFERASE.

Mol	Chain	Residues	Atoms					ZeroOcc	AltConf	Trace
1	A	253	Total	C	N	O	S	0	0	0
			2029	1294	329	393	13			
1	B	253	Total	C	N	O	S	0	0	0
			2029	1294	329	393	13			

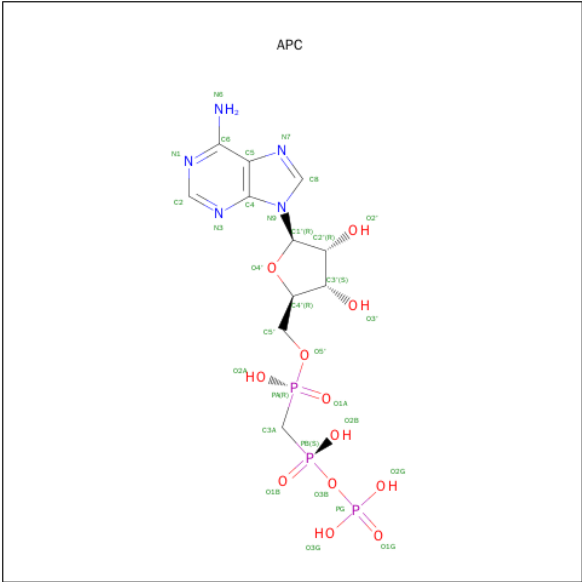
There are 2 discrepancies between the modelled and reference sequences:

Chain	Residue	Modelled	Actual	Comment	Reference
A	80	TYR	ASP	ENGINEERED	UNP P05057
B	80	TYR	ASP	ENGINEERED	UNP P05057

- Molecule 2 is MAGNESIUM ION (three-letter code: MG) (formula: Mg).

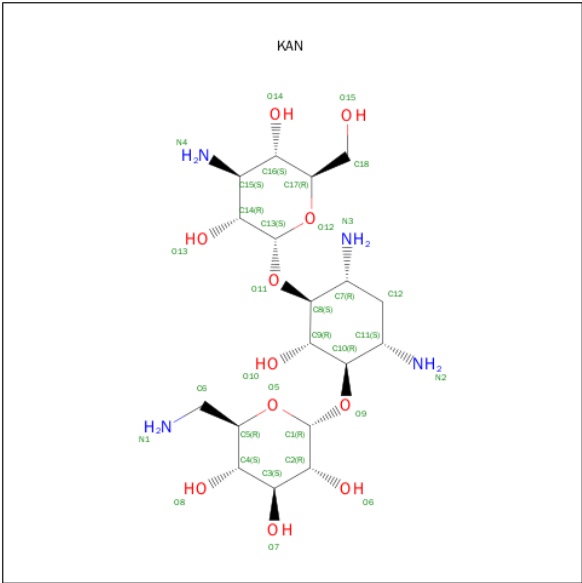
Mol	Chain	Residues	Atoms		ZeroOcc	AltConf
2	B	1	Total	Mg	0	0
			1	1		
2	A	1	Total	Mg	0	0
			1	1		

- Molecule 3 is DIPHOSPHOMETHYLPHOSPHONIC ACID ADENOSYL ESTER (three-letter code: APC) (formula: C<sub>11</sub>H<sub>18</sub>N<sub>5</sub>O<sub>12</sub>P<sub>3</sub>).



Mol	Chain	Residues	Atoms					ZeroOcc	AltConf
3	A	1	Total 31	C 11	N 5	O 12	P 3	0	0
3	B	1	Total 31	C 11	N 5	O 12	P 3	0	0

- Molecule 4 is KANAMYCIN A (three-letter code: KAN) (formula: C<sub>18</sub>H<sub>36</sub>N<sub>4</sub>O<sub>11</sub>).



Mol	Chain	Residues	Atoms				ZeroOcc	AltConf
4	A	1	Total	C	N	O	0	0
			33	18	4	11		
4	B	1	Total	C	N	O	0	0
			33	18	4	11		

- Molecule 5 is water.

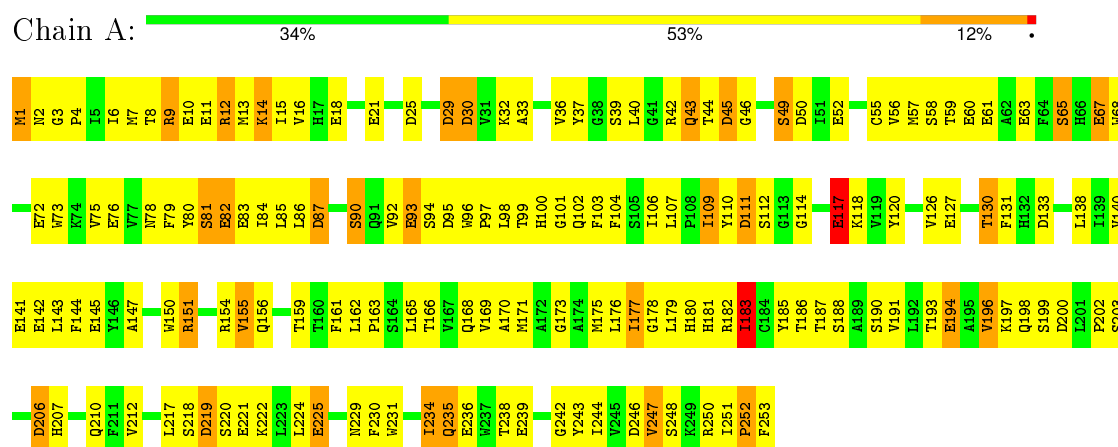
Mol	Chain	Residues	Atoms		ZeroOcc	AltConf
5	A	28	Total 28	O 28	0	0
5	B	15	Total 15	O 15	0	0

### 3 Residue-property plots

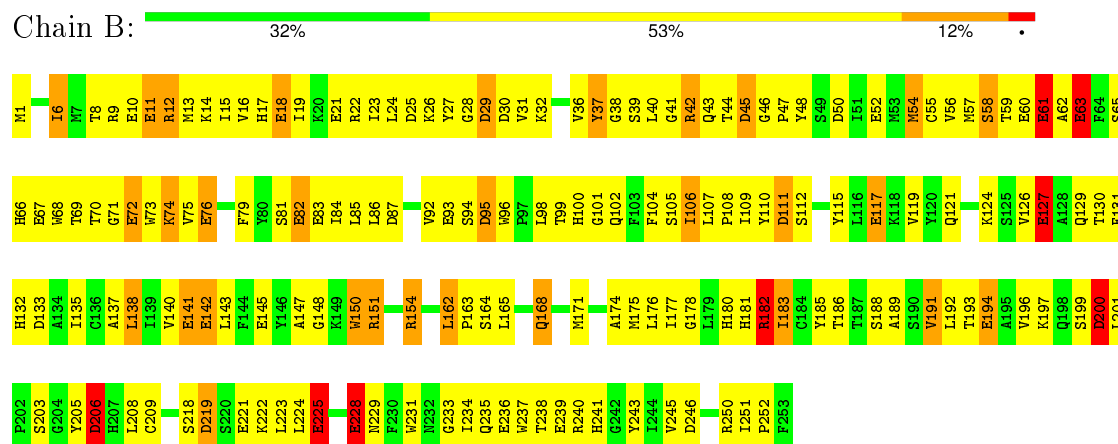
These plots are drawn for all protein, RNA and DNA chains in the entry. The first graphic for a chain summarises the proportions of errors displayed in the second graphic. The second graphic shows the sequence view annotated by issues in geometry and electron density. Residues are color-coded according to the number of geometric quality criteria for which they contain at least one outlier: green = 0, yellow = 1, orange = 2 and red = 3 or more. A red dot above a residue indicates a poor fit to the electron density ( $RSRZ > 2$ ). Stretches of 2 or more consecutive residues without any outlier are shown as a green connector. Residues present in the sample, but not in the model, are shown in grey.

Note EDS was not executed.

#### • Molecule 1: KANAMYCIN NUCLEOTIDYLTRANSFERASE



#### • Molecule 1: KANAMYCIN NUCLEOTIDYLTRANSFERASE



## 4 Data and refinement statistics

Xtriage (Phenix) and EDS were not executed - this section will therefore be incomplete.

Property	Value	Source
Space group	P 21 21 21	Depositor
Cell constants a, b, c, $\alpha$ , $\beta$ , $\gamma$	57.30 Å   102.20 Å   108.80 Å 90.00°   90.00°   90.00°	Depositor
Resolution (Å)	30.00 – 2.50	Depositor
% Data completeness (in resolution range)	(Not available) (30.00-2.50)	Depositor
$R_{merge}$	(Not available)	Depositor
$R_{sym}$	(Not available)	Depositor
Refinement program	TNT	Depositor
R, $R_{free}$	0.168 , (Not available)	Depositor
Estimated twinning fraction	No twinning to report.	Xtriage
Total number of atoms	4231	wwPDB-VP
Average B, all atoms (Å <sup>2</sup> )	37.0	wwPDB-VP

## 5 Model quality ⓘ

### 5.1 Standard geometry ⓘ

Bond lengths and bond angles in the following residue types are not validated in this section: APC, MG, KAN

The Z score for a bond length (or angle) is the number of standard deviations the observed value is removed from the expected value. A bond length (or angle) with  $|Z| > 5$  is considered an outlier worth inspection. RMSZ is the root-mean-square of all Z scores of the bond lengths (or angles).

Mol	Chain	Bond lengths		Bond angles	
		RMSZ	# Z  >5	RMSZ	# Z  >5
1	A	1.11	21/2078 (1.0%)	1.35	20/2815 (0.7%)
1	B	1.08	23/2078 (1.1%)	1.40	23/2815 (0.8%)
All	All	1.10	44/4156 (1.1%)	1.37	43/5630 (0.8%)

All (44) bond length outliers are listed below:

Mol	Chain	Res	Type	Atoms	Z	Observed(Å)	Ideal(Å)
1	A	145	GLU	CD-OE2	8.87	1.35	1.25
1	A	142	GLU	CD-OE1	8.59	1.35	1.25
1	A	60	GLU	CD-OE2	7.19	1.33	1.25
1	A	83	GLU	CD-OE1	7.00	1.33	1.25
1	A	221	GLU	CD-OE1	6.78	1.33	1.25
1	B	117	GLU	CD-OE1	6.76	1.33	1.25
1	B	60	GLU	CD-OE1	6.72	1.33	1.25
1	B	225	GLU	CD-OE2	6.56	1.32	1.25
1	A	127	GLU	CD-OE2	6.52	1.32	1.25
1	B	76	GLU	CD-OE1	6.49	1.32	1.25
1	B	63	GLU	CD-OE1	6.48	1.32	1.25
1	B	82	GLU	CD-OE1	6.48	1.32	1.25
1	A	52	GLU	CD-OE2	6.43	1.32	1.25
1	B	127	GLU	CD-OE1	6.42	1.32	1.25
1	A	236	GLU	CD-OE1	6.41	1.32	1.25
1	A	93	GLU	CD-OE2	6.35	1.32	1.25
1	A	21	GLU	CD-OE1	6.31	1.32	1.25
1	A	225	GLU	CD-OE1	6.30	1.32	1.25
1	B	61	GLU	CD-OE1	6.28	1.32	1.25
1	B	228	GLU	CD-OE1	6.21	1.32	1.25
1	A	63	GLU	CD-OE1	6.18	1.32	1.25
1	B	72	GLU	CD-OE2	6.18	1.32	1.25
1	B	11	GLU	CD-OE1	6.15	1.32	1.25
1	A	141	GLU	CD-OE1	6.11	1.32	1.25

*Continued on next page...*



*Continued from previous page...*

Mol	Chain	Res	Type	Atoms	Z	Observed(Å)	Ideal(Å)
1	A	61	GLU	CD-OE2	6.00	1.32	1.25
1	A	239	GLU	CD-OE1	5.95	1.32	1.25
1	A	117	GLU	CD-OE1	5.93	1.32	1.25
1	A	82	GLU	CD-OE1	5.86	1.32	1.25
1	B	239	GLU	CD-OE2	5.81	1.32	1.25
1	B	83	GLU	CD-OE1	5.78	1.32	1.25
1	A	67	GLU	CD-OE2	5.77	1.31	1.25
1	B	236	GLU	CD-OE2	5.72	1.31	1.25
1	B	142	GLU	CD-OE2	5.66	1.31	1.25
1	B	194	GLU	CD-OE2	5.66	1.31	1.25
1	B	18	GLU	CD-OE2	5.64	1.31	1.25
1	A	72	GLU	CD-OE1	5.62	1.31	1.25
1	B	141	GLU	CD-OE1	5.59	1.31	1.25
1	B	221	GLU	CD-OE2	5.57	1.31	1.25
1	A	194	GLU	CD-OE2	5.46	1.31	1.25
1	B	10	GLU	CD-OE1	5.46	1.31	1.25
1	B	21	GLU	CD-OE2	5.46	1.31	1.25
1	A	18	GLU	CD-OE2	5.41	1.31	1.25
1	B	145	GLU	CD-OE2	5.31	1.31	1.25
1	B	93	GLU	CD-OE2	5.01	1.31	1.25

All (43) bond angle outliers are listed below:

Mol	Chain	Res	Type	Atoms	Z	Observed(°)	Ideal(°)
1	A	12	ARG	NE-CZ-NH2	-8.63	115.98	120.30
1	B	200	ASP	CB-CG-OD1	-8.38	110.75	118.30
1	B	50	ASP	CB-CG-OD2	-8.12	110.99	118.30
1	B	87	ASP	CB-CG-OD2	-7.85	111.23	118.30
1	B	29	ASP	CB-CG-OD2	-7.83	111.26	118.30
1	A	87	ASP	CB-CG-OD2	-7.34	111.69	118.30
1	B	29	ASP	CB-CG-OD1	7.00	124.60	118.30
1	A	45	ASP	CB-CG-OD1	-6.99	112.01	118.30
1	B	45	ASP	CB-CG-OD1	-6.99	112.01	118.30
1	B	25	ASP	CB-CG-OD2	-6.89	112.10	118.30
1	B	50	ASP	CB-CG-OD1	6.84	124.46	118.30
1	B	95	ASP	CB-CG-OD1	-6.46	112.49	118.30
1	B	151	ARG	NE-CZ-NH2	-6.43	117.08	120.30
1	B	151	ARG	NE-CZ-NH1	6.36	123.48	120.30
1	A	219	ASP	CB-CG-OD2	-6.15	112.76	118.30
1	B	111	ASP	CB-CG-OD1	-6.05	112.85	118.30
1	A	111	ASP	CB-CG-OD1	-5.91	112.98	118.30
1	A	151	ARG	NE-CZ-NH2	-5.86	117.37	120.30

*Continued on next page...*

*Continued from previous page...*

Mol	Chain	Res	Type	Atoms	Z	Observed(°)	Ideal(°)
1	A	30	ASP	CB-CG-OD1	-5.86	113.03	118.30
1	A	45	ASP	CB-CG-OD2	5.84	123.56	118.30
1	B	206	ASP	CB-CG-OD2	-5.80	113.08	118.30
1	B	246	ASP	CB-CG-OD2	-5.75	113.13	118.30
1	B	246	ASP	CB-CG-OD1	5.70	123.43	118.30
1	A	219	ASP	CB-CG-OD1	5.63	123.36	118.30
1	B	133	ASP	CB-CG-OD1	-5.59	113.27	118.30
1	A	133	ASP	CB-CG-OD2	5.58	123.32	118.30
1	B	200	ASP	CB-CG-OD2	5.50	123.25	118.30
1	A	206	ASP	CB-CG-OD1	-5.49	113.36	118.30
1	A	206	ASP	CB-CG-OD2	5.46	123.21	118.30
1	B	133	ASP	CB-CG-OD2	5.41	123.17	118.30
1	B	30	ASP	CB-CG-OD1	5.40	123.16	118.30
1	A	29	ASP	CB-CG-OD2	-5.39	113.45	118.30
1	A	202	PRO	N-CA-CB	5.34	109.71	103.30
1	A	247	VAL	CA-CB-CG1	-5.30	102.95	110.90
1	A	183	ILE	CB-CA-C	-5.29	101.03	111.60
1	A	29	ASP	CB-CG-OD1	5.27	123.04	118.30
1	B	37	TYR	N-CA-CB	5.23	120.01	110.60
1	B	219	ASP	CB-CG-OD2	-5.22	113.60	118.30
1	A	25	ASP	CB-CG-OD2	-5.15	113.66	118.30
1	A	30	ASP	CB-CG-OD2	5.07	122.86	118.30
1	A	246	ASP	CB-CG-OD1	-5.05	113.76	118.30
1	B	12	ARG	NE-CZ-NH2	-5.04	117.78	120.30
1	B	182	ARG	NE-CZ-NH1	5.01	122.80	120.30

There are no chirality outliers.

There are no planarity outliers.

## 5.2 Too-close contacts ⓘ

In the following table, the Non-H and H(model) columns list the number of non-hydrogen atoms and hydrogen atoms in the chain respectively. The H(added) column lists the number of hydrogen atoms added and optimized by MolProbity. The Clashes column lists the number of clashes within the asymmetric unit, whereas Symm-Clashes lists symmetry related clashes.

Mol	Chain	Non-H	H(model)	H(added)	Clashes	Symm-Clashes
1	A	2029	0	1957	138	19
1	B	2029	0	1957	165	19
2	A	1	0	0	0	0
2	B	1	0	0	0	0

*Continued on next page...*

*Continued from previous page...*

Mol	Chain	Non-H	H(model)	H(added)	Clashes	Symm-Clashes
3	A	31	0	12	4	0
3	B	31	0	14	4	0
4	A	33	0	36	3	0
4	B	33	0	36	1	0
5	A	28	0	0	3	0
5	B	15	0	0	3	0
All	All	4231	0	4012	281	19

The all-atom clashscore is defined as the number of clashes found per 1000 atoms (including hydrogen atoms). The all-atom clashscore for this structure is 34.

All (281) close contacts within the same asymmetric unit are listed below, sorted by their clash magnitude.

Atom-1	Atom-2	Interatomic distance (Å)	Clash overlap (Å)
1:B:154:ARG:HG3	1:B:224:LEU:HD13	1.38	1.04
1:A:252:PRO:HG3	1:B:68:TRP:CE3	2.08	0.89
1:B:194:GLU:HA	1:B:197:LYS:HE3	1.58	0.85
1:A:252:PRO:HG3	1:B:68:TRP:CD2	2.12	0.84
1:B:219:ASP:O	1:B:223:LEU:HG	1.79	0.82
1:B:42:ARG:HB2	1:B:44:THR:HG23	1.62	0.82
1:B:162:LEU:HB3	1:B:163:PRO:HD3	1.62	0.82
1:A:155:VAL:HG11	1:B:47:PRO:HG2	1.63	0.80
1:A:144:PHE:HD2	1:B:74:LYS:HD2	1.46	0.80
1:A:173:GLY:O	1:A:177:ILE:HD12	1.83	0.79
1:B:67:GLU:HG2	1:B:76:GLU:HG3	1.64	0.79
1:A:8:THR:HB	1:A:10:GLU:OE1	1.81	0.79
1:A:32:LYS:HD2	1:A:58:SER:HA	1.67	0.77
1:B:1:MET:HE3	1:B:71:GLY:HA2	1.69	0.75
1:A:161:PHE:CD2	1:B:189:ALA:HB2	2.22	0.75
1:B:137:ALA:O	1:B:141:GLU:HG3	1.87	0.74
1:B:131:PHE:CE2	1:B:182:ARG:HG3	2.23	0.74
1:B:62:ALA:O	1:B:84:ILE:HD12	1.88	0.74
1:A:55:CYS:SG	1:A:57:MET:HE3	2.28	0.73
1:B:131:PHE:O	1:B:135:ILE:HG13	1.89	0.73
1:A:190:SER:O	1:A:194:GLU:HG3	1.89	0.72
1:B:177:ILE:HG22	1:B:181:HIS:HD2	1.53	0.72
1:B:147:ALA:O	1:B:151:ARG:HG3	1.90	0.72
1:B:15:ILE:O	1:B:19:ILE:HG13	1.89	0.72
1:A:250:ARG:NH2	1:B:18:GLU:OE1	2.23	0.71
1:B:32:LYS:HD3	1:B:115:TYR:CE1	2.26	0.71
1:A:173:GLY:O	1:A:176:LEU:HB3	1.92	0.69

*Continued on next page...*

*Continued from previous page...*

Atom-1	Atom-2	Interatomic distance (Å)	Clash overlap (Å)
1:B:12:ARG:NH2	1:B:46:GLY:O	2.25	0.69
1:A:155:VAL:HG12	1:A:156:GLN:HG2	1.74	0.69
1:B:6:ILE:HD11	1:B:48:TYR:OH	1.92	0.69
1:A:177:ILE:O	1:A:180:HIS:HB3	1.92	0.69
1:B:54:MET:HE3	1:B:106:ILE:HG12	1.73	0.69
1:A:140:VAL:O	1:B:74:LYS:HE2	1.92	0.69
1:A:178:GLY:HA2	1:A:183:ILE:HD12	1.74	0.69
1:A:126:VAL:HG12	1:A:131:PHE:CE2	2.28	0.69
1:A:92:VAL:HG21	1:A:126:VAL:HG11	1.76	0.68
1:A:104:PHE:HD1	1:A:120:TYR:CE1	2.10	0.68
1:A:147:ALA:O	1:A:151:ARG:HG3	1.94	0.68
1:A:81:SER:HB3	1:A:84:ILE:HD13	1.76	0.68
1:B:65:SER:OG	1:B:66:HIS:N	2.28	0.67
1:B:127:GLU:O	1:B:130:THR:HB	1.95	0.67
1:A:12:ARG:NH2	1:A:46:GLY:O	2.28	0.66
1:B:154:ARG:HG3	1:B:224:LEU:CD1	2.22	0.66
1:B:40:LEU:O	1:B:43:GLN:N	2.29	0.66
1:A:144:PHE:CD2	1:B:74:LYS:HG3	2.31	0.66
1:A:11:GLU:O	1:A:15:ILE:HD12	1.96	0.65
1:A:210:GLN:OE1	1:A:210:GLN:HA	1.95	0.65
1:B:52:GLU:OE2	5:B:619:HOH:O	2.13	0.65
1:A:144:PHE:O	1:A:147:ALA:HB3	1.95	0.65
1:A:37:TYR:OH	1:A:78:ASN:ND2	2.30	0.65
1:B:206:ASP:OD1	1:B:206:ASP:N	2.29	0.65
1:B:36:VAL:HG23	1:B:109:ILE:CD1	2.27	0.65
1:A:42:ARG:HB3	1:A:44:THR:HG23	1.78	0.64
1:B:200:ASP:O	1:B:237:TRP:NE1	2.28	0.64
1:A:155:VAL:HG12	1:A:156:GLN:N	2.13	0.64
1:A:162:LEU:HD23	1:A:220:SER:CB	2.28	0.64
1:A:65:SER:HB2	1:A:78:ASN:OD1	1.99	0.63
1:B:39:SER:HA	1:B:42:ARG:NH1	2.14	0.63
1:B:148:GLY:O	1:B:151:ARG:HB2	1.99	0.63
1:B:23:ILE:HG22	1:B:31:VAL:HG21	1.81	0.62
1:A:238:THR:HB	1:A:243:TYR:O	1.98	0.62
1:A:162:LEU:HD23	1:A:220:SER:HB3	1.82	0.62
1:A:155:VAL:HG11	1:B:47:PRO:CG	2.30	0.61
1:A:126:VAL:CG1	1:A:130:THR:HG21	2.29	0.61
1:B:178:GLY:HA2	1:B:183:ILE:HB	1.82	0.61
4:A:558:KAN:H61	3:B:557:APC:C6	2.30	0.61
1:A:13:MET:O	1:A:16:VAL:HB	2.01	0.60
1:B:11:GLU:O	1:B:14:LYS:HB3	2.01	0.60

*Continued on next page...*

*Continued from previous page...*

Atom-1	Atom-2	Interatomic distance (Å)	Clash overlap (Å)
1:A:68:TRP:CG	1:B:252:PRO:HG3	2.36	0.60
1:A:92:VAL:HB	1:A:130:THR:HG23	1.83	0.60
1:B:229:ASN:HD22	1:B:229:ASN:N	1.99	0.60
1:B:205:TYR:O	1:B:208:LEU:HB3	2.02	0.60
1:A:251:ILE:HD11	1:B:19:ILE:HG12	1.82	0.60
1:B:32:LYS:HD3	1:B:115:TYR:CZ	2.37	0.59
1:B:165:LEU:O	1:B:168:GLN:HB2	2.02	0.59
1:A:242:GLY:C	1:A:244:ILE:HD12	2.23	0.59
1:A:67:GLU:HG3	1:A:76:GLU:HG3	1.85	0.59
1:A:1:MET:O	1:B:235:GLN:HG3	2.03	0.58
1:B:92:VAL:CG2	1:B:126:VAL:HG11	2.34	0.58
1:A:43:GLN:HG3	5:A:612:HOH:O	2.03	0.58
1:A:55:CYS:SG	1:A:57:MET:CE	2.91	0.58
1:B:81:SER:OG	1:B:84:ILE:HG13	2.04	0.58
1:A:219:ASP:OD2	1:A:222:LYS:HG3	2.04	0.58
1:B:9:ARG:O	1:B:13:MET:HG2	2.04	0.57
1:B:106:ILE:HG22	1:B:107:LEU:N	2.19	0.57
1:B:36:VAL:HG23	1:B:109:ILE:HD12	1.85	0.57
1:A:207:HIS:O	1:A:210:GLN:HB2	2.04	0.57
1:B:57:MET:SD	1:B:79:PHE:HD2	2.27	0.57
1:A:73:TRP:HZ3	1:A:75:VAL:CG2	2.18	0.57
1:A:32:LYS:HB2	1:A:56:VAL:O	2.04	0.57
1:B:56:VAL:O	1:B:57:MET:HG3	2.05	0.57
1:A:252:PRO:HD3	1:B:68:TRP:CE2	2.39	0.56
1:B:1:MET:CE	1:B:71:GLY:HA2	2.35	0.56
1:A:107:LEU:HD23	1:A:107:LEU:C	2.26	0.56
1:A:95:ASP:HB3	4:A:558:KAN:O13	2.06	0.56
1:B:68:TRP:CH2	1:B:75:VAL:HG11	2.41	0.56
1:A:4:PRO:HD2	1:B:151:ARG:NH1	2.20	0.56
1:A:86:LEU:O	1:A:90:SER:OG	2.24	0.56
1:B:19:ILE:CD1	1:B:75:VAL:HG11	2.36	0.56
1:B:52:GLU:OE2	3:B:557:APC:O1A	2.24	0.56
1:B:69:THR:HA	1:B:73:TRP:O	2.05	0.56
1:B:59:THR:O	1:B:81:SER:HB3	2.05	0.55
1:A:39:SER:HB2	1:A:45:ASP:HA	1.89	0.55
1:A:235:GLN:HA	1:A:235:GLN:NE2	2.22	0.55
1:B:225:GLU:O	1:B:225:GLU:HG3	2.03	0.54
1:B:162:LEU:HB3	1:B:163:PRO:CD	2.35	0.54
1:B:38:GLY:HA3	1:B:52:GLU:OE1	2.07	0.54
1:A:104:PHE:HD1	1:A:120:TYR:HE1	1.56	0.54
1:B:12:ARG:O	1:B:16:VAL:HG23	2.09	0.53

*Continued on next page...*

*Continued from previous page...*

Atom-1	Atom-2	Interatomic distance (Å)	Clash overlap (Å)
1:B:67:GLU:CG	1:B:76:GLU:HG3	2.36	0.53
1:B:135:ILE:HD12	1:B:243:TYR:CE1	2.42	0.53
1:A:93:GLU:H	1:A:96:TRP:HB2	1.74	0.53
1:A:247:VAL:HG11	1:B:1:MET:HE3	1.89	0.53
1:A:166:THR:HG22	1:A:212:VAL:CG2	2.38	0.53
1:B:238:THR:HG22	1:B:243:TYR:HB2	1.89	0.53
1:A:220:SER:O	1:A:224:LEU:HD12	2.08	0.53
1:A:144:PHE:HD2	1:B:74:LYS:CD	2.21	0.53
1:B:171:MET:O	1:B:175:MET:HG2	2.08	0.53
1:B:177:ILE:CG2	1:B:181:HIS:HD2	2.20	0.53
1:B:235:GLN:HA	1:B:235:GLN:OE1	2.09	0.53
1:B:22:ARG:NH2	1:B:26:LYS:HG3	2.24	0.53
1:B:171:MET:HA	1:B:171:MET:HE2	1.91	0.52
1:A:251:ILE:HG22	1:A:253:PHE:O	2.09	0.52
1:B:32:LYS:NZ	1:B:82:GLU:OE1	2.41	0.52
1:A:82:GLU:O	1:A:86:LEU:HG	2.09	0.52
1:B:1:MET:CE	1:B:69:THR:HG21	2.40	0.52
1:B:140:VAL:HG12	1:B:141:GLU:N	2.25	0.52
1:B:19:ILE:O	1:B:23:ILE:HG13	2.10	0.51
1:B:205:TYR:CZ	1:B:209:CYS:SG	3.03	0.51
1:B:106:ILE:C	1:B:108:PRO:HD3	2.31	0.51
1:A:159:THR:O	1:A:163:PRO:HD3	2.11	0.51
1:B:199:SER:OG	1:B:200:ASP:N	2.34	0.51
1:A:57:MET:HE3	1:A:79:PHE:HD2	1.76	0.51
1:A:33:ALA:HA	1:A:110:TYR:O	2.11	0.51
1:B:73:TRP:CZ3	1:B:75:VAL:HG23	2.46	0.50
1:B:59:THR:HG22	1:B:61:GLU:HG3	1.92	0.50
1:A:73:TRP:CZ3	1:A:75:VAL:CG2	2.95	0.50
1:A:181:HIS:HB2	1:A:183:ILE:HD11	1.92	0.50
1:A:3:GLY:HA3	1:B:151:ARG:HH12	1.77	0.50
1:A:126:VAL:HG13	1:A:130:THR:HG21	1.92	0.50
1:B:181:HIS:HB2	1:B:183:ILE:HG13	1.92	0.50
1:B:81:SER:HG	1:B:84:ILE:HG13	1.75	0.50
1:B:9:ARG:NH2	1:B:43:GLN:O	2.45	0.50
1:A:252:PRO:HG2	1:A:253:PHE:HD1	1.76	0.49
1:A:7:MET:HE3	1:A:11:GLU:HB3	1.95	0.49
1:B:1:MET:HE2	1:B:69:THR:HG21	1.94	0.49
1:B:241:HIS:HB2	1:B:243:TYR:CE2	2.48	0.49
1:B:8:THR:O	1:B:12:ARG:HG3	2.11	0.49
1:B:192:LEU:O	1:B:196:VAL:HG12	2.13	0.49
1:B:135:ILE:HD12	1:B:243:TYR:CZ	2.48	0.49

*Continued on next page...*

*Continued from previous page...*

Atom-1	Atom-2	Interatomic distance (Å)	Clash overlap (Å)
1:B:129:GLN:O	1:B:132:HIS:HB3	2.13	0.49
1:A:180:HIS:ND1	1:A:243:TYR:OH	2.39	0.49
1:A:81:SER:HB3	1:A:84:ILE:CD1	2.42	0.49
1:A:4:PRO:N	1:B:151:ARG:NH1	2.61	0.48
1:A:73:TRP:HZ3	1:A:75:VAL:HG21	1.77	0.48
1:A:9:ARG:NE	1:A:45:ASP:OD1	2.32	0.48
1:A:138:LEU:O	1:A:138:LEU:HD23	2.12	0.48
1:A:247:VAL:HB	1:B:70:THR:O	2.14	0.48
1:B:56:VAL:C	1:B:57:MET:HG3	2.34	0.48
1:A:126:VAL:CG1	1:A:131:PHE:CE2	2.95	0.48
1:A:231:TRP:O	1:A:234:ILE:HB	2.13	0.48
1:B:177:ILE:CG2	1:B:181:HIS:CD2	2.97	0.48
1:A:101:GLY:HA3	5:A:606:HOH:O	2.13	0.48
1:A:67:GLU:HG2	1:A:76:GLU:HB2	1.96	0.47
1:B:229:ASN:N	1:B:229:ASN:ND2	2.58	0.47
1:B:40:LEU:HD12	1:B:45:ASP:OD1	2.15	0.47
1:B:115:TYR:O	1:B:119:VAL:HG23	2.14	0.47
1:A:16:VAL:CG1	1:A:109:ILE:HD13	2.43	0.47
1:A:230:PHE:O	1:A:234:ILE:HG13	2.15	0.47
1:B:131:PHE:CZ	1:B:182:ARG:HG3	2.50	0.47
1:A:162:LEU:HD21	1:A:224:LEU:HG	1.96	0.47
1:A:36:VAL:HG11	1:A:40:LEU:HD23	1.97	0.47
1:A:36:VAL:HG23	1:A:109:ILE:CD1	2.44	0.47
1:A:16:VAL:HG11	1:A:109:ILE:CD1	2.45	0.47
1:A:1:MET:N	1:B:235:GLN:HG3	2.30	0.47
1:A:96:TRP:N	1:A:97:PRO:HD2	2.30	0.47
1:A:97:PRO:HG2	1:A:175:MET:HA	1.96	0.47
1:A:170:ALA:HB2	1:A:212:VAL:HG21	1.96	0.47
1:A:168:GLN:O	1:A:171:MET:HB2	2.15	0.46
1:B:106:ILE:CG2	1:B:107:LEU:N	2.78	0.46
1:B:92:VAL:CG2	1:B:130:THR:HG22	2.45	0.46
1:A:162:LEU:HD12	1:A:162:LEU:HA	1.60	0.46
1:A:36:VAL:O	1:A:107:LEU:N	2.43	0.46
1:B:32:LYS:HE3	1:B:58:SER:HA	1.98	0.46
1:B:22:ARG:O	1:B:26:LYS:HB2	2.16	0.46
1:A:10:GLU:CD	1:A:10:GLU:H	2.18	0.46
1:A:234:ILE:O	1:A:238:THR:HG23	2.16	0.46
1:B:117:GLU:O	1:B:121:GLN:N	2.41	0.46
1:B:107:LEU:HD23	1:B:107:LEU:C	2.37	0.46
1:A:187:THR:O	1:A:191:VAL:HG23	2.16	0.46
1:A:49:SER:HB3	3:A:556:APC:O1G	2.16	0.45

*Continued on next page...*

*Continued from previous page...*

Atom-1	Atom-2	Interatomic distance (Å)	Clash overlap (Å)
1:A:16:VAL:HG11	1:A:109:ILE:HD11	1.98	0.45
1:B:37:TYR:CZ	1:B:52:GLU:HB3	2.51	0.45
1:B:171:MET:HA	1:B:171:MET:CE	2.45	0.45
1:A:4:PRO:CD	1:B:151:ARG:NH1	2.79	0.45
1:B:228:GLU:O	1:B:231:TRP:HB3	2.16	0.45
1:B:251:ILE:HA	1:B:252:PRO:HD2	1.64	0.45
1:A:82:GLU:HG2	1:A:82:GLU:O	2.15	0.44
1:A:165:LEU:O	1:A:169:VAL:HG23	2.17	0.44
1:B:63:GLU:HG2	1:B:63:GLU:O	2.18	0.44
1:B:86:LEU:HD23	1:B:86:LEU:HA	1.77	0.44
1:A:143:LEU:HD23	1:A:143:LEU:HA	1.82	0.44
1:B:73:TRP:HZ3	1:B:75:VAL:HG23	1.80	0.44
1:B:162:LEU:HD12	1:B:162:LEU:O	2.18	0.44
1:B:135:ILE:HG23	1:B:176:LEU:HD11	2.00	0.44
1:B:57:MET:O	1:B:81:SER:HA	2.17	0.44
1:B:174:ALA:HB2	1:B:205:TYR:OH	2.18	0.44
1:A:161:PHE:CD2	1:B:189:ALA:CB	2.98	0.44
1:A:99:THR:HA	3:A:556:APC:C8	2.48	0.44
1:A:92:VAL:CG2	1:A:126:VAL:HG11	2.46	0.44
1:B:13:MET:HE3	1:B:13:MET:HA	1.98	0.44
1:A:67:GLU:CG	1:A:76:GLU:HG3	2.47	0.44
1:B:56:VAL:HG12	1:B:57:MET:N	2.33	0.43
1:B:106:ILE:CG2	1:B:107:LEU:H	2.31	0.43
1:B:92:VAL:CG2	1:B:130:THR:CG2	2.96	0.43
1:B:36:VAL:CG2	1:B:109:ILE:CD1	2.96	0.43
1:A:80:TYR:CD2	1:A:85:LEU:HD13	2.52	0.43
4:A:558:KAN:H61	3:B:557:APC:N6	2.32	0.43
1:A:97:PRO:HB2	1:A:185:TYR:CE2	2.53	0.43
1:A:206:ASP:O	1:A:210:GLN:HG2	2.18	0.43
1:A:36:VAL:HG23	1:A:109:ILE:HD12	2.00	0.43
1:B:26:LYS:HD3	1:B:27:TYR:CE1	2.54	0.43
1:B:181:HIS:O	1:B:183:ILE:HG12	2.18	0.43
1:A:247:VAL:H	1:A:247:VAL:HG22	1.44	0.43
1:A:247:VAL:O	1:B:70:THR:HA	2.18	0.43
1:B:100:HIS:O	1:B:104:PHE:CE1	2.72	0.43
1:A:162:LEU:HD23	1:A:220:SER:OG	2.18	0.43
1:A:96:TRP:N	1:A:97:PRO:CD	2.82	0.43
1:B:154:ARG:CG	1:B:224:LEU:HD13	2.28	0.43
1:A:166:THR:HG22	1:A:212:VAL:HG22	1.99	0.43
1:A:6:ILE:HD13	1:A:6:ILE:HG21	1.68	0.43
1:B:92:VAL:HG21	1:B:130:THR:HG22	2.00	0.42

*Continued on next page...*



*Continued from previous page...*

Atom-1	Atom-2	Interatomic distance (Å)	Clash overlap (Å)
1:A:162:LEU:CD2	1:A:220:SER:HB3	2.49	0.42
1:A:36:VAL:CG2	1:A:109:ILE:CD1	2.96	0.42
1:A:10:GLU:O	1:A:14:LYS:HG2	2.19	0.42
1:B:141:GLU:OE1	4:B:559:KAN:N2	2.52	0.42
1:B:95:ASP:OD1	1:B:95:ASP:N	2.52	0.42
1:B:237:TRP:O	1:B:240:ARG:HB3	2.19	0.42
1:A:196:VAL:HG13	1:A:196:VAL:O	2.19	0.42
1:A:247:VAL:HG12	1:B:69:THR:HG23	2.01	0.42
1:A:7:MET:HE1	1:A:15:ILE:HD11	2.00	0.42
1:A:42:ARG:NH2	3:A:556:APC:O1B	2.50	0.42
1:B:180:HIS:HB2	1:B:237:TRP:HH2	1.85	0.42
1:A:242:GLY:HA2	1:A:244:ILE:CD1	2.49	0.42
1:B:68:TRP:CH2	1:B:75:VAL:CG1	3.02	0.42
1:B:1:MET:CE	1:B:69:THR:CG2	2.97	0.42
1:A:154:ARG:HB3	1:A:155:VAL:H	1.60	0.42
1:A:179:LEU:HD23	1:A:179:LEU:HA	1.89	0.42
1:B:36:VAL:CG1	1:B:37:TYR:N	2.81	0.42
3:A:556:APC:O1A	5:A:631:HOH:O	2.22	0.42
1:B:9:ARG:HG3	1:B:45:ASP:OD2	2.19	0.42
1:B:101:GLY:HA3	5:B:612:HOH:O	2.20	0.42
1:A:251:ILE:HG23	1:A:252:PRO:HD2	2.02	0.42
1:A:247:VAL:CG1	1:B:1:MET:HE3	2.50	0.42
1:B:181:HIS:O	1:B:183:ILE:N	2.53	0.41
1:A:225:GLU:O	1:A:229:ASN:N	2.45	0.41
1:B:181:HIS:CB	1:B:183:ILE:HG13	2.51	0.41
1:B:24:LEU:O	1:B:28:GLY:HA2	2.20	0.41
1:A:193:THR:O	1:A:197:LYS:HE3	2.21	0.41
1:B:59:THR:CG2	1:B:61:GLU:HG3	2.51	0.41
1:B:13:MET:HE3	1:B:13:MET:CA	2.50	0.41
1:B:193:THR:O	1:B:196:VAL:HG12	2.20	0.41
1:A:144:PHE:CD2	1:B:74:LYS:HD2	2.38	0.41
1:A:30:ASP:O	1:A:58:SER:N	2.39	0.41
1:B:177:ILE:HG22	1:B:181:HIS:CD2	2.42	0.41
1:B:185:TYR:CD2	1:B:191:VAL:HA	2.55	0.41
3:B:557:APC:O1A	5:B:619:HOH:O	2.21	0.41
1:B:138:LEU:O	1:B:142:GLU:HB2	2.21	0.41
1:B:191:VAL:HG12	1:B:192:LEU:HD23	2.02	0.41
1:B:176:LEU:HA	1:B:176:LEU:HD12	1.80	0.41
1:B:1:MET:HE2	1:B:69:THR:CG2	2.50	0.41
1:B:6:ILE:CD1	1:B:48:TYR:CZ	3.04	0.41
1:B:171:MET:CA	1:B:171:MET:HE2	2.50	0.41

*Continued on next page...*

*Continued from previous page...*

Atom-1	Atom-2	Interatomic distance (Å)	Clash overlap (Å)
1:A:100:HIS:CD2	1:A:103:PHE:HE2	2.39	0.40
1:B:96:TRP:HA	1:B:99:THR:OG1	2.21	0.40
1:B:150:TRP:C	1:B:150:TRP:CD1	2.95	0.40
1:A:155:VAL:CG1	1:A:156:GLN:N	2.79	0.40
1:B:177:ILE:HD13	1:B:201:LEU:HD12	2.04	0.40
1:B:203:SER:O	1:B:233:GLY:HA3	2.22	0.40
1:A:181:HIS:HB2	1:A:183:ILE:CD1	2.50	0.40
1:B:138:LEU:CD2	1:B:143:LEU:HD12	2.51	0.40

All (19) symmetry-related close contacts are listed below. The label for Atom-2 includes the symmetry operator and encoded unit-cell translations to be applied.

Atom-1	Atom-2	Interatomic distance (Å)	Clash overlap (Å)
1:A:112:SER:O	1:B:111:ASP:N[1_455]	1.02	1.18
1:A:114:GLY:N	1:B:109:ILE:O[1_455]	1.47	0.73
1:A:117:GLU:CG	1:B:17:HIS:ND1[1_455]	1.63	0.57
1:A:43:GLN:OE1	1:B:43:GLN:O[1_455]	1.65	0.55
1:A:112:SER:C	1:B:111:ASP:N[1_455]	1.68	0.52
1:A:117:GLU:CG	1:B:17:HIS:CG[1_455]	1.69	0.51
1:A:117:GLU:CG	1:B:17:HIS:CE1[1_455]	1.84	0.36
1:A:111:ASP:CB	1:B:108:PRO:O[1_455]	1.89	0.31
1:A:117:GLU:CB	1:B:17:HIS:CD2[1_455]	1.92	0.28
1:A:117:GLU:CG	1:B:17:HIS:CD2[1_455]	1.99	0.21
1:A:112:SER:O	1:B:110:TYR:C[1_455]	2.03	0.17
1:A:43:GLN:CD	1:B:43:GLN:O[1_455]	2.05	0.15
1:A:114:GLY:CA	1:B:109:ILE:O[1_455]	2.06	0.14
1:A:117:GLU:CG	1:B:17:HIS:NE2[1_455]	2.07	0.13
1:A:117:GLU:CB	1:B:17:HIS:NE2[1_455]	2.10	0.10
1:A:112:SER:O	1:B:111:ASP:CA[1_455]	2.12	0.08
1:A:43:GLN:NE2	1:B:43:GLN:O[1_455]	2.12	0.08
1:A:117:GLU:CD	1:B:17:HIS:CG[1_455]	2.12	0.08
1:A:112:SER:CB	1:B:111:ASP:O[1_455]	2.17	0.03

## 5.3 Torsion angles

### 5.3.1 Protein backbone

In the following table, the Percentiles column shows the percent Ramachandran outliers of the chain as a percentile score with respect to all X-ray entries followed by that with respect to entries of similar resolution.

The Analysed column shows the number of residues for which the backbone conformation was analysed, and the total number of residues.

Mol	Chain	Analysed	Favoured	Allowed	Outliers	Percentiles	
1	A	251/253 (99%)	227 (90%)	19 (8%)	5 (2%)	9	15
1	B	251/253 (99%)	221 (88%)	24 (10%)	6 (2%)	7	11
All	All	502/506 (99%)	448 (89%)	43 (9%)	11 (2%)	8	13

All (11) Ramachandran outliers are listed below:

Mol	Chain	Res	Type
1	B	182	ARG
1	A	155	VAL
1	A	198	GLN
1	A	248	SER
1	B	200	ASP
1	A	186	THR
1	B	63	GLU
1	B	105	SER
1	B	191	VAL
1	B	41	GLY
1	A	252	PRO

### 5.3.2 Protein sidechains ⓘ

In the following table, the Percentiles column shows the percent sidechain outliers of the chain as a percentile score with respect to all X-ray entries followed by that with respect to entries of similar resolution.

The Analysed column shows the number of residues for which the sidechain conformation was analysed, and the total number of residues.

Mol	Chain	Analysed	Rotameric	Outliers	Percentiles	
1	A	222/222 (100%)	188 (85%)	34 (15%)	3	6
1	B	222/222 (100%)	186 (84%)	36 (16%)	3	5
All	All	444/444 (100%)	374 (84%)	70 (16%)	3	5

All (70) residues with a non-rotameric sidechain are listed below:

Mol	Chain	Res	Type
1	A	1	MET
1	A	2	ASN

*Continued on next page...*

*Continued from previous page...*

Mol	Chain	Res	Type
1	A	9	ARG
1	A	14	LYS
1	A	29	ASP
1	A	43	GLN
1	A	49	SER
1	A	50	ASP
1	A	59	THR
1	A	65	SER
1	A	81	SER
1	A	87	ASP
1	A	90	SER
1	A	94	SER
1	A	98	LEU
1	A	102	GLN
1	A	106	ILE
1	A	109	ILE
1	A	117	GLU
1	A	118	LYS
1	A	130	THR
1	A	150	TRP
1	A	177	ILE
1	A	182	ARG
1	A	183	ILE
1	A	188	SER
1	A	196	VAL
1	A	199	SER
1	A	200	ASP
1	A	203	SER
1	A	217	LEU
1	A	218	SER
1	A	234	ILE
1	A	235	GLN
1	B	6	ILE
1	B	29	ASP
1	B	42	ARG
1	B	54	MET
1	B	55	CYS
1	B	58	SER
1	B	61	GLU
1	B	72	GLU
1	B	74	LYS
1	B	85	LEU

*Continued on next page...*

*Continued from previous page...*

Mol	Chain	Res	Type
1	B	94	SER
1	B	98	LEU
1	B	102	GLN
1	B	106	ILE
1	B	112	SER
1	B	124	LYS
1	B	127	GLU
1	B	138	LEU
1	B	150	TRP
1	B	154	ARG
1	B	162	LEU
1	B	164	SER
1	B	168	GLN
1	B	182	ARG
1	B	183	ILE
1	B	186	THR
1	B	188	SER
1	B	200	ASP
1	B	206	ASP
1	B	218	SER
1	B	222	LYS
1	B	225	GLU
1	B	228	GLU
1	B	234	ILE
1	B	245	VAL
1	B	250	ARG

Some sidechains can be flipped to improve hydrogen bonding and reduce clashes. All (11) such sidechains are listed below:

Mol	Chain	Res	Type
1	A	66	HIS
1	A	78	ASN
1	A	102	GLN
1	A	121	GLN
1	A	229	ASN
1	A	235	GLN
1	B	129	GLN
1	B	132	HIS
1	B	156	GLN
1	B	181	HIS
1	B	229	ASN

### 5.3.3 RNA ⓘ

There are no RNA molecules in this entry.

## 5.4 Non-standard residues in protein, DNA, RNA chains ⓘ

There are no non-standard protein/DNA/RNA residues in this entry.

## 5.5 Carbohydrates ⓘ

There are no carbohydrates in this entry.

## 5.6 Ligand geometry ⓘ

Of 6 ligands modelled in this entry, 2 are monoatomic - leaving 4 for Mogul analysis.

In the following table, the Counts columns list the number of bonds (or angles) for which Mogul statistics could be retrieved, the number of bonds (or angles) that are observed in the model and the number of bonds (or angles) that are defined in the chemical component dictionary. The Link column lists molecule types, if any, to which the group is linked. The Z score for a bond length (or angle) is the number of standard deviations the observed value is removed from the expected value. A bond length (or angle) with  $|Z| > 2$  is considered an outlier worth inspection. RMSZ is the root-mean-square of all Z scores of the bond lengths (or angles).

Mol	Type	Chain	Res	Link	Bond lengths			Bond angles		
					Counts	RMSZ	# $ Z  > 2$	Counts	RMSZ	# $ Z  > 2$
3	APC	A	556	2	25,33,33	1.59	6 (24%)	30,52,52	1.93	5 (16%)
4	KAN	A	558	-	35,35,35	0.42	0	44,52,52	1.24	6 (13%)
3	APC	B	557	2	25,33,33	1.37	5 (20%)	30,52,52	1.69	2 (6%)
4	KAN	B	559	-	35,35,35	0.46	0	44,52,52	1.42	5 (11%)

In the following table, the Chirals column lists the number of chiral outliers, the number of chiral centers analysed, the number of these observed in the model and the number defined in the chemical component dictionary. Similar counts are reported in the Torsion and Rings columns. '-' means no outliers of that kind were identified.

Mol	Type	Chain	Res	Link	Chirals	Torsions	Rings
3	APC	A	556	2	-	0/15/38/38	0/3/3/3
4	KAN	A	558	-	-	0/12/72/72	0/3/3/3
3	APC	B	557	2	-	0/15/38/38	0/3/3/3
4	KAN	B	559	-	-	0/12/72/72	0/3/3/3

All (11) bond length outliers are listed below:

Mol	Chain	Res	Type	Atoms	Z	Observed(Å)	Ideal(Å)
3	A	556	APC	C6-N6	-4.01	1.22	1.34
3	B	557	APC	C6-N6	-3.14	1.25	1.34
3	A	556	APC	PB-O2B	-3.11	1.48	1.56
3	B	557	APC	PA-O2A	-2.59	1.50	1.56
3	A	556	APC	C2-N3	-2.48	1.27	1.32
3	B	557	APC	PB-O2B	-2.48	1.50	1.56
3	A	556	APC	PA-O2A	-2.42	1.50	1.56
3	A	556	APC	O4'-C1'	-2.26	1.38	1.41
3	B	557	APC	O4'-C1'	-2.24	1.38	1.41
3	A	556	APC	PA-O5'	2.22	1.59	1.57
3	B	557	APC	PA-O5'	2.77	1.60	1.57

All (18) bond angle outliers are listed below:

Mol	Chain	Res	Type	Atoms	Z	Observed(°)	Ideal(°)
3	A	556	APC	N3-C2-N1	-7.50	123.15	128.89
3	B	557	APC	N3-C2-N1	-7.07	123.48	128.89
4	A	558	KAN	C10-C9-C8	-3.14	102.73	109.06
4	B	559	KAN	C10-C9-C8	-3.04	102.93	109.06
4	A	558	KAN	C6-C5-C4	-3.00	107.50	113.17
4	A	558	KAN	C13-O11-C8	-2.09	112.53	118.01
4	B	559	KAN	C4-C3-C2	2.00	114.53	110.79
3	A	556	APC	C2'-C1'-N9	2.01	117.37	114.29
4	A	558	KAN	O11-C8-C9	2.23	112.93	107.17
3	A	556	APC	O5'-PA-C3A	2.28	110.79	104.42
4	A	558	KAN	O5-C5-C4	2.30	113.99	109.68
4	B	559	KAN	O9-C10-C9	2.42	113.42	107.17
3	A	556	APC	C4'-O4'-C1'	2.47	112.43	109.72
4	B	559	KAN	O11-C8-C9	2.72	114.18	107.17
4	A	558	KAN	O9-C10-C11	3.50	117.39	108.92
3	B	557	APC	C2-N1-C6	4.10	126.09	118.77
4	B	559	KAN	O9-C10-C11	4.69	120.28	108.92
3	A	556	APC	C2-N1-C6	5.06	127.81	118.77

There are no chirality outliers.

There are no torsion outliers.

There are no ring outliers.

4 monomers are involved in 10 short contacts:

Mol	Chain	Res	Type	Clashes	Symm-Clashes
3	A	556	APC	4	0
4	A	558	KAN	3	0
3	B	557	APC	4	0
4	B	559	KAN	1	0

## 5.7 Other polymers [i](#)

There are no such residues in this entry.

## 5.8 Polymer linkage issues [i](#)

There are no chain breaks in this entry.



## 6 Fit of model and data [i](#)

### 6.1 Protein, DNA and RNA chains [i](#)

EDS was not executed - this section will therefore be empty.

### 6.2 Non-standard residues in protein, DNA, RNA chains [i](#)

EDS was not executed - this section will therefore be empty.

### 6.3 Carbohydrates [i](#)

EDS was not executed - this section will therefore be empty.

### 6.4 Ligands [i](#)

EDS was not executed - this section will therefore be empty.

### 6.5 Other polymers [i](#)

EDS was not executed - this section will therefore be empty.