



# wwPDB NMR Structure Validation Summary Report ⓘ

Apr 26, 2016 – 11:23 PM BST

PDB ID : 2KOO  
Title : NMR solution structures of hexanoyl-ACP from the *Streptomyces coelicolor*  
Fatty Acid Synthase  
Authors : Ploskon, E.; Arthur, C.J.; Crump, M.P.  
Deposited on : 2009-09-29

This is a wwPDB NMR Structure Validation Summary Report for a publicly released PDB entry.  
We welcome your comments at [validation@mail.wwpdb.org](mailto:validation@mail.wwpdb.org)  
A user guide is available at  
<http://wwpdb.org/validation/2016/NMRValidationReportHelp>  
with specific help available everywhere you see the ⓘ symbol.

---

The following versions of software and data (see [references ⓘ](#)) were used in the production of this report:

Cyrange : Kirchner and Güntert (2011)  
NmrClust : Kelley et al. (1996)  
MolProbity : 4.02b-467  
Mogul : 1.7.1 (RC1), CSD as537be (2016)  
Percentile statistics : 20151230.v01 (using entries in the PDB archive December 30th 2015)  
RCI : v\_1n\_11\_5\_13\_A (Berjanski et al., 2005)  
PANAV : Wang et al. (2010)  
ShiftChecker : rb-20027457  
Ideal geometry (proteins) : Engh & Huber (2001)  
Ideal geometry (DNA, RNA) : Parkinson et al. (1996)  
Validation Pipeline (wwPDB-VP) : rb-20027457

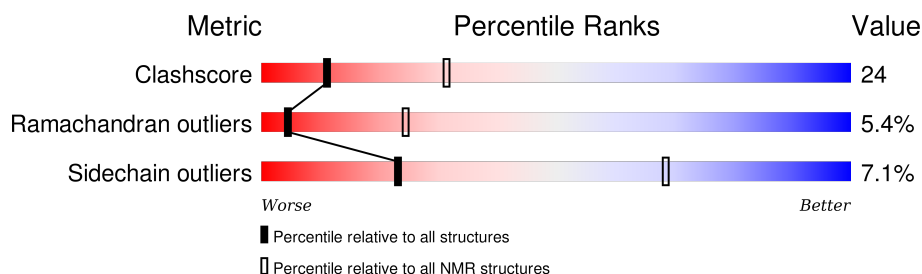
# 1 Overall quality at a glance

The following experimental techniques were used to determine the structure:

*SOLUTION NMR*

The overall completeness of chemical shifts assignment is 85%.

Percentile scores (ranging between 0-100) for global validation metrics of the entry are shown in the following graphic. The table shows the number of entries on which the scores are based.



Metric	Whole archive (#Entries)	NMR archive (#Entries)
Clashscore	114402	11133
Ramachandran outliers	111179	9975
Sidechain outliers	111093	9958

The table below summarises the geometric issues observed across the polymeric chains and their fit to the experimental data. The red, orange, yellow and green segments indicate the fraction of residues that contain outliers for  $\geq 3$ , 2, 1 and 0 types of geometric quality criteria. A cyan segment indicates the fraction of residues that are not part of the well-defined cores, and a grey segment represents the fraction of residues that are not modelled. The numeric value for each fraction is indicated below the corresponding segment, with a dot representing fractions  $\leq 5\%$ .

Mol	Chain	Length	Quality of chain
1	A	81	

The following table lists non-polymeric compounds, carbohydrate monomers and non-standard residues in protein, DNA and RNA chains that are outliers for geometric criteria:

Mol	Chain	Compound	Res	Total models with violations	
				Chirality	Geometry
2	A	SXH	101	20	-

## 2 Ensemble composition and analysis ⓘ

This entry contains 20 models. Model 13 is the overall representative, medoid model (most similar to other models). The authors have identified model 1 as representative, based on the following criterion: *closest to the average*.

The following residues are included in the computation of the global validation metrics.

Well-defined (core) protein residues			
Well-defined core	Residue range (total)	Backbone RMSD (Å)	Medoid model
1	A:3-A:79 (77)	0.20	13

Ill-defined regions of proteins are excluded from the global statistics.

Ligands and non-protein polymers are included in the analysis.

The models can be grouped into 3 clusters and 2 single-model clusters were found.

Cluster number	Models
1	1, 3, 4, 5, 6, 7, 9, 10, 11, 12, 13, 14, 19, 20
2	2, 8
3	16, 17
Single-model clusters	15; 18

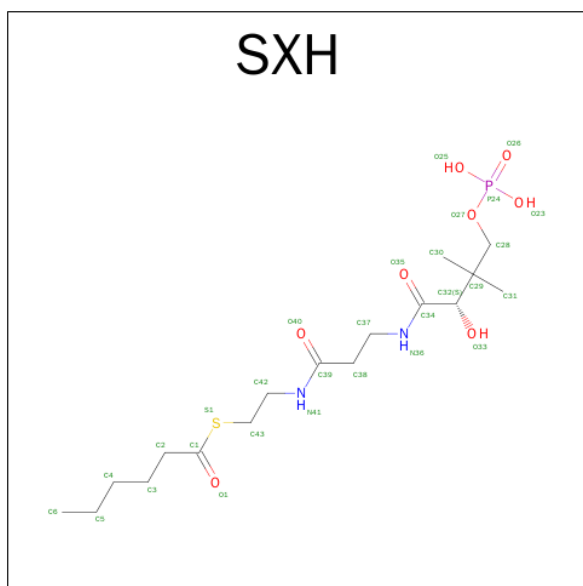
### 3 Entry composition [i](#)

There are 2 unique types of molecules in this entry. The entry contains 1287 atoms, of which 642 are hydrogens and 0 are deuteriums.

- Molecule 1 is a protein called Acyl carrier protein.

Mol	Chain	Residues	Atoms						Trace
1	A	81	Total	C	H	N	O	S	0
			1228	386	611	96	134	1	

- Molecule 2 is S-[2-({N-[(2S)-2-HYDROXY-3,3-DIMETHYL-4-(PHOSPHONOOXY)BUTANOYL]-BETA-ALANYL}AMINO)ETHYL] HEXANETHIOATE (three-letter code: SXH) (formula: C<sub>17</sub>H<sub>33</sub>N<sub>2</sub>O<sub>8</sub>PS).



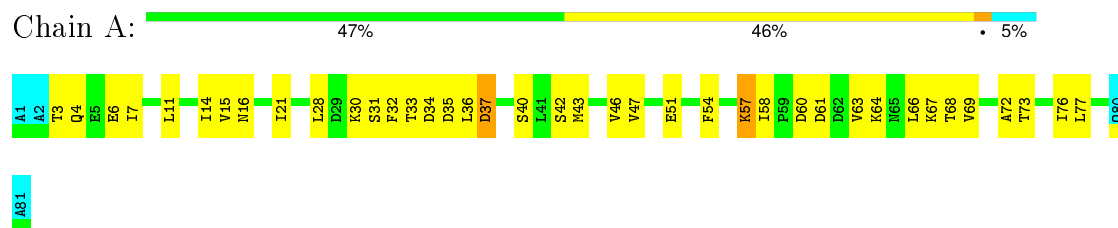
Mol	Chain	Residues	Atoms						
2	A	1	Total	C	H	N	O	P	S
			59	17	31	2	7	1	1

## 4 Residue-property plots [i](#)

### 4.1 Average score per residue in the NMR ensemble

These plots are provided for all protein, RNA and DNA chains in the entry. The first graphic is the same as shown in the summary in section 1 of this report. The second graphic shows the sequence where residues are colour-coded according to the number of geometric quality criteria for which they contain at least one outlier: green = 0, yellow = 1, orange = 2 and red = 3 or more. Stretches of 2 or more consecutive residues without any outliers are shown as green connectors. Residues which are classified as ill-defined in the NMR ensemble, are shown in cyan with an underline colour-coded according to the previous scheme. Residues which were present in the experimental sample, but not modelled in the final structure are shown in grey.

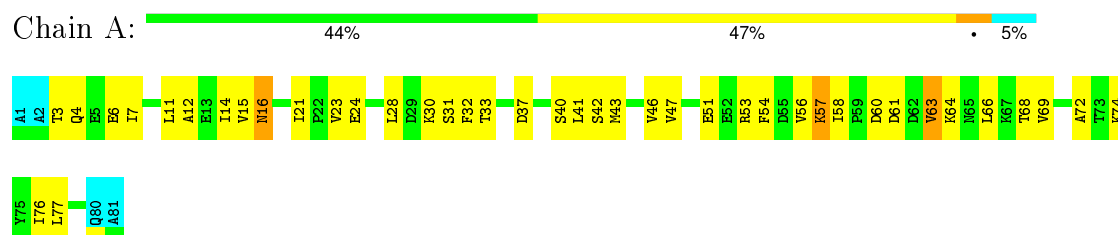
- Molecule 1: Acyl carrier protein



### 4.2 Residue scores for the representative (medoid) model from the NMR ensemble

The representative model is number 13. Colouring as in section 4.1 above.

- Molecule 1: Acyl carrier protein



## 5 Refinement protocol and experimental data overview

The models were refined using the following method: *simulated annealing*.

Of the 100 calculated structures, 20 were deposited, based on the following criterion: *structures with the lowest energy*.

The following table shows the software used for structure solution, optimisation and refinement.

Software name	Classification	Version
ARIA	refinement	1.2
ARIA	structure solution	1.2

The following table shows chemical shift validation statistics as aggregates over all chemical shift files. Detailed validation can be found in section 7 of this report.

Chemical shift file(s)	BMRB entry 16524
Number of chemical shift lists	1
Total number of shifts	952
Number of shifts mapped to atoms	918
Number of unparsed shifts	0
Number of shifts with mapping errors	34
Number of shifts with mapping warnings	0
Assignment completeness (well-defined parts)	85%

No validations of the models with respect to experimental NMR restraints is performed at this time.

## 6 Model quality

### 6.1 Standard geometry

Bond lengths and bond angles in the following residue types are not validated in this section: SXH

The Z score for a bond length (or angle) is the number of standard deviations the observed value is removed from the expected value. A bond length (or angle) with  $|Z| > 5$  is considered an outlier worth inspection. RMSZ is the (average) root-mean-square of all Z scores of the bond lengths (or angles).

Mol	Chain	Bond lengths		Bond angles	
		RMSZ	#Z>5	RMSZ	#Z>5
1	A	0.83±0.04	0±1/598 (0.1±0.1%)	0.77±0.03	0±0/814 (0.0±0.0%)
All	All	0.83	8/11960 (0.1%)	0.77	0/16280 (0.0%)

Chiral center outliers are detected by calculating the chiral volume of a chiral center and verifying if the center is modelled as a planar moiety or with the opposite hand. A planarity outlier is detected by checking planarity of atoms in a peptide group, atoms in a mainchain group or atoms of a sidechain that are expected to be planar.

Mol	Chain	Chirality	Planarity
1	A	0.0±0.0	0.3±0.5
All	All	0	6

All unique bond outliers are listed below. They are sorted according to the Z-score of the worst occurrence in the ensemble.

Mol	Chain	Res	Type	Atoms	Z	Observed(Å)	Ideal(Å)	Models	
								Worst	Total
1	A	32	PHE	CE2-CZ	7.24	1.51	1.37	10	3
1	A	75	TYR	CE2-CZ	-7.20	1.29	1.38	19	1
1	A	75	TYR	CE1-CZ	-6.35	1.30	1.38	3	3
1	A	32	PHE	CE1-CZ	-5.60	1.26	1.37	10	1

There are no bond-angle outliers.

There are no chirality outliers.

All unique planar outliers are listed below. They are sorted by the frequency of occurrence in the ensemble.

Mol	Chain	Res	Type	Group	Models (Total)
1	A	53	ARG	Sidechain	5
1	A	75	TYR	Sidechain	1

## 6.2 Too-close contacts

In the following table, the Non-H and H(model) columns list the number of non-hydrogen atoms and hydrogen atoms in each chain respectively. The H(added) column lists the number of hydrogen atoms added and optimized by MolProbity. The Clashes column lists the number of clashes averaged over the ensemble.

Mol	Chain	Non-H	H(model)	H(added)	Clashes
1	A	592	586	585	29±4
2	A	28	31	31	4±2
All	All	12400	12340	12318	587

The all-atom clashscore is defined as the number of clashes found per 1000 atoms (including hydrogen atoms). The all-atom clashscore for this structure is 24.

5 of 148 unique clashes are listed below, sorted by their clash magnitude.

Atom-1	Atom-2	Clash(Å)	Distance(Å)	Models	
				Worst	Total
1:A:43:MET:HG2	2:A:101:SXH:S1	0.80	2.16	6	4
1:A:31:SER:HB2	1:A:34:ASP:HB3	0.80	1.53	18	10
1:A:67:LYS:HG2	2:A:101:SXH:S1	0.78	2.19	10	1
1:A:43:MET:HG2	2:A:101:SXH:H43A	0.76	1.57	17	4
1:A:63:VAL:HG23	1:A:66:LEU:HD12	0.75	1.57	18	1

## 6.3 Torsion angles

### 6.3.1 Protein backbone

In the following table, the Percentiles column shows the percent Ramachandran outliers of the chain as a percentile score with respect to all PDB entries followed by that with respect to all NMR entries. The Analysed column shows the number of residues for which the backbone conformation was analysed and the total number of residues.

Mol	Chain	Analysed	Favoured	Allowed	Outliers	Percentiles	
1	A	77/81 (95%)	65±2 (84±2%)	8±2 (10±3%)	4±1 (5±1%)	4	24
All	All	1540/1620 (95%)	1301 (84%)	156 (10%)	83 (5%)	4	24

5 of 8 unique Ramachandran outliers are listed below. They are sorted by the frequency of occurrence in the ensemble.

Mol	Chain	Res	Type	Models (Total)
1	A	37	ASP	20
1	A	67	LYS	15

*Continued on next page...*



*Continued from previous page...*

Mol	Chain	Res	Type	Models (Total)
1	A	34	ASP	14
1	A	57	LYS	14
1	A	40	SER	8

### 6.3.2 Protein sidechains [i](#)

In the following table, the Percentiles column shows the percent sidechain outliers of the chain as a percentile score with respect to all PDB entries followed by that with respect to all NMR entries. The Analysed column shows the number of residues for which the sidechain conformation was analysed and the total number of residues.

Mol	Chain	Analysed	Rotameric	Outliers	Percentiles	
1	A	68/69 (99%)	63±2 (93±2%)	5±2 (7±2%)	23	68
All	All	1360/1380 (99%)	1263 (93%)	97 (7%)	23	68

5 of 19 unique residues with a non-rotameric sidechain are listed below. They are sorted by the frequency of occurrence in the ensemble.

Mol	Chain	Res	Type	Models (Total)
1	A	4	GLN	20
1	A	63	VAL	11
1	A	33	THR	10
1	A	16	ASN	10
1	A	58	ILE	9

### 6.3.3 RNA [i](#)

There are no RNA molecules in this entry.

## 6.4 Non-standard residues in protein, DNA, RNA chains [i](#)

There are no non-standard protein/DNA/RNA residues in this entry.

### 6.5 Carbohydrates [i](#)

There are no carbohydrates in this entry.

## 6.6 Ligand geometry ⓘ

1 ligand is modelled in this entry.

In the following table, the Counts columns list the number of bonds for which Mogul statistics could be retrieved, the number of bonds that are observed in the model and the number of bonds that are defined in the chemical component dictionary. The Link column lists molecule types, if any, to which the group is linked. The Z score for a bond length is the number of standard deviations the observed value is removed from the expected value. A bond length with  $|Z| > 2$  is considered an outlier worth inspection. RMSZ is the average root-mean-square of all Z scores of the bond lengths.

Mol	Type	Chain	Res	Link	Bond lengths		
					Counts	RMSZ	#Z>2
2	SXH	A	101	1	20,27,28	1.30±0.17	0±0 (0±0%)

In the following table, the Counts columns list the number of angles for which Mogul statistics could be retrieved, the number of angles that are observed in the model and the number of angles that are defined in the chemical component dictionary. The Link column lists molecule types, if any, to which the group is linked. The Z score for a bond angle is the number of standard deviations the observed value is removed from the expected value. A bond angle with  $|Z| > 2$  is considered an outlier worth inspection. RMSZ is the average root-mean-square of all Z scores of the bond angles.

Mol	Type	Chain	Res	Link	Bond angles		
					Counts	RMSZ	#Z>2
2	SXH	A	101	1	25,34,37	1.24±0.18	0±0 (0±1%)

In the following table, the Chirals column lists the number of chiral outliers, the number of chiral centers analysed, the number of these observed in the model and the number defined in the chemical component dictionary. Similar counts are reported in the Torsion and Rings columns. '-' means no outliers of that kind were identified.

Mol	Type	Chain	Res	Link	Chirals	Torsions	Rings
2	SXH	A	101	1	1±0,1,8,8	2±0,32,34,35	0±0,0,0,0

There are no bond-length outliers.

All unique angle outliers are listed below.

Mol	Chain	Res	Type	Atoms	Z	Observed(°)	Ideal(°)	Models	
								Worst	Total
2	A	101	SXH	O1-C1-C2	5.37	120.25	123.94	3	2

All unique chiral outliers are listed below.

Mol	Chain	Res	Type	Atoms	Models (Total)
2	A	101	SXH	C32	20

All unique torsion outliers are listed below. They are sorted by the frequency of occurrence in the ensemble.

Mol	Chain	Res	Type	Atoms	Models (Total)
2	A	101	SXH	C2-C1-S1-C43	6
2	A	101	SXH	O1-C1-S1-C43	6

There are no ring outliers.

## 6.7 Other polymers [i](#)

There are no such molecules in this entry.

## 6.8 Polymer linkage issues [i](#)

There are no chain breaks in this entry.

## 7 Chemical shift validation

The completeness of assignment taking into account all chemical shift lists is 85% for the well-defined parts and 85% for the entire structure.

### 7.1 Chemical shift list 1

File name: BMRB entry 16524

Chemical shift list name: *assigned\_chem\_shift\_list\_1*

#### 7.1.1 Bookkeeping

The following table shows the results of parsing the chemical shift list and reports the number of nuclei with statistically unusual chemical shifts.

Total number of shifts	952
Number of shifts mapped to atoms	918
Number of unparsed shifts	0
Number of shifts with mapping errors	34
Number of shifts with mapping warnings	0
Number of shift outliers (ShiftChecker)	0

The following assigned chemical shifts were not mapped to the molecules present in the coordinate file.

- Chain not found in structure. First 5 (of 34) occurrences are reported below.

Chain	Res	Type	Atom	Shift Data		
				Value	Uncertainty	Ambiguity
UNMAPPED	1	SXH	H41A	8.16	0.0	1
UNMAPPED	1	SXH	H38B	2.48	0.0	1
UNMAPPED	1	SXH	H38A	2.48	0.0	1
UNMAPPED	1	SXH	H6B	0.73	0.0	1
UNMAPPED	1	SXH	H42A	3.28	0.0	1

#### 7.1.2 Chemical shift referencing

The following table shows the suggested chemical shift referencing corrections.

Nucleus	# values	Correction $\pm$ precision, ppm	Suggested action
$^{13}\text{C}_\alpha$	81	$-0.58 \pm 0.16$	Should be applied
$^{13}\text{C}_\beta$	78	$-0.05 \pm 0.27$	None needed ( $< 0.5$ ppm)
$^{13}\text{C}'$	0	—	—

*Continued on next page...*

Continued from previous page...

Nucleus	# values	Correction $\pm$ precision, ppm	Suggested action
$^{15}\text{N}$	78	$1.04 \pm 0.34$	Should be applied

### 7.1.3 Completeness of resonance assignments [i](#)

The following table shows the completeness of the chemical shift assignments for the well-defined regions of the structure. The overall completeness is 85%, i.e. 757 atoms were assigned a chemical shift out of a possible 894. 0 out of 18 assigned methyl groups (LEU and VAL) were assigned stereospecifically.

	Total	$^1\text{H}$	$^{13}\text{C}$	$^{15}\text{N}$
Backbone	304/381 (80%)	152/152 (100%)	77/154 (50%)	75/75 (100%)
Sidechain	425/479 (89%)	257/270 (95%)	165/197 (84%)	3/12 (25%)
Aromatic	28/34 (82%)	15/18 (83%)	13/14 (93%)	0/2 (0%)
Overall	757/894 (85%)	424/440 (96%)	255/365 (70%)	78/89 (88%)

### 7.1.4 Statistically unusual chemical shifts [i](#)

There are no statistically unusual chemical shifts.

### 7.1.5 Random Coil Index (RCI) plots [i](#)

The image below reports *random coil index* values for the protein chains in the structure. The height of each bar gives a probability of a given residue to be disordered, as predicted from the available chemical shifts and the amino acid sequence. A value above 0.2 is an indication of significant predicted disorder. The colour of the bar shows whether the residue is in the well-defined core (black) or in the ill-defined residue ranges (cyan), as described in section 2 on ensemble composition.

Random coil index (RCI) for chain A:

