



# Full wwPDB X-ray Structure Validation Report ⓘ

Feb 1, 2016 – 06:08 PM GMT

PDB ID : 4KPM  
Title : Crystal structure of the catalytic domain of RpfB from Mycobacterium tuberculosis in complex with triNAG  
Authors : Squeglia, F.; Ruggiero, A.; Berisio, R.  
Deposited on : 2013-05-14  
Resolution : 1.33 Å(reported)

This is a Full wwPDB X-ray Structure Validation Report for a publicly released PDB entry.  
We welcome your comments at [validation@mail.wwpdb.org](mailto:validation@mail.wwpdb.org)  
A user guide is available at  
<http://wwpdb.org/validation/2016/XrayValidationReportHelp>  
with specific help available everywhere you see the ⓘ symbol.

---

The following versions of software and data (see [references ⓘ](#)) were used in the production of this report:

MolProbity : 4.02b-467  
Mogul : 1.7 (RC4), CSD as536be (2015)  
Xtriage (Phenix) : 1.9-1692  
EDS : rb-20026688  
Percentile statistics : 20151230.v01 (using entries in the PDB archive December 30th 2015)  
Refmac : 5.8.0135  
CCP4 : 6.5.0  
Ideal geometry (proteins) : Engh & Huber (2001)  
Ideal geometry (DNA, RNA) : Parkinson et al. (1996)  
Validation Pipeline (wwPDB-VP) : trunk26865

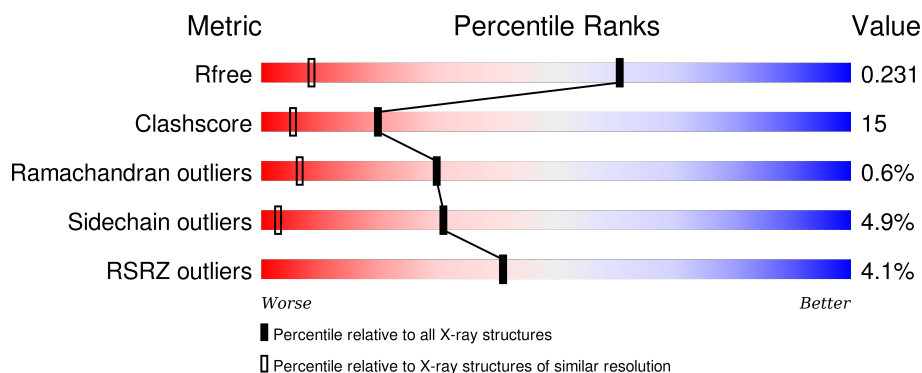
# 1 Overall quality at a glance

The following experimental techniques were used to determine the structure:

## *X-RAY DIFFRACTION*

The reported resolution of this entry is 1.33 Å.

Percentile scores (ranging between 0-100) for global validation metrics of the entry are shown in the following graphic. The table shows the number of entries on which the scores are based.



Metric	Whole archive (#Entries)	Similar resolution (#Entries, resolution range(Å))
$R_{free}$	91344	1723 (1.38-1.30)
Clashscore	102246	1806 (1.38-1.30)
Ramachandran outliers	100387	1749 (1.38-1.30)
Sidechain outliers	100360	1749 (1.38-1.30)
RSRZ outliers	91569	1721 (1.38-1.30)

The table below summarises the geometric issues observed across the polymeric chains and their fit to the electron density. The red, orange, yellow and green segments on the lower bar indicate the fraction of residues that contain outliers for  $\geq 3$ , 2, 1 and 0 types of geometric quality criteria. A grey segment represents the fraction of residues that are not modelled. The numeric value for each fraction is indicated below the corresponding segment, with a dot representing fractions  $\leq 5\%$ . The upper red bar (where present) indicates the fraction of residues that have poor fit to the electron density. The numeric value is given above the bar.

Mol	Chain	Length	Quality of chain
1	A	80	<div> <div>5%</div> <div>80%</div> <div>16%</div> <div>• •</div> </div>
1	B	80	<div> <div>5%</div> <div>81%</div> <div>18%</div> <div>•</div> </div>
1	C	80	<div> <div>3%</div> <div>78%</div> <div>19%</div> <div>•</div> </div>
1	D	80	<div> <div>4%</div> <div>80%</div> <div>18%</div> <div>•</div> </div>

The following table lists non-polymeric compounds, carbohydrate monomers and non-standard

residues in protein, DNA, RNA chains that are outliers for geometric or electron-density-fit criteria:

Mol	Type	Chain	Res	Chirality	Geometry	Clashes	Electron density
3	NAG	A	602	X	-	-	X
3	NAG	A	603	-	-	-	X
3	NAG	A	604	-	-	-	X

## 2 Entry composition [i](#)

There are 5 unique types of molecules in this entry. The entry contains 3066 atoms, of which 0 are hydrogens and 0 are deuteriums.

In the tables below, the ZeroOcc column contains the number of atoms modelled with zero occupancy, the AltConf column contains the number of residues with at least one atom in alternate conformation and the Trace column contains the number of residues modelled with at most 2 atoms.

- Molecule 1 is a protein called Resuscitation-promoting factor RpfB.

Mol	Chain	Residues	Atoms					ZeroOcc	AltConf	Trace
1	A	80	Total	C	N	O	S	0	0	0
			598	373	111	112	2			
1	B	80	Total	C	N	O	S	0	0	0
			598	373	111	112	2			
1	C	80	Total	C	N	O	S	0	0	0
			598	373	111	112	2			
1	D	80	Total	C	N	O	S	0	0	0
			598	373	111	112	2			

- Molecule 2 is SULFATE ION (three-letter code: SO4) (formula: O<sub>4</sub>S).

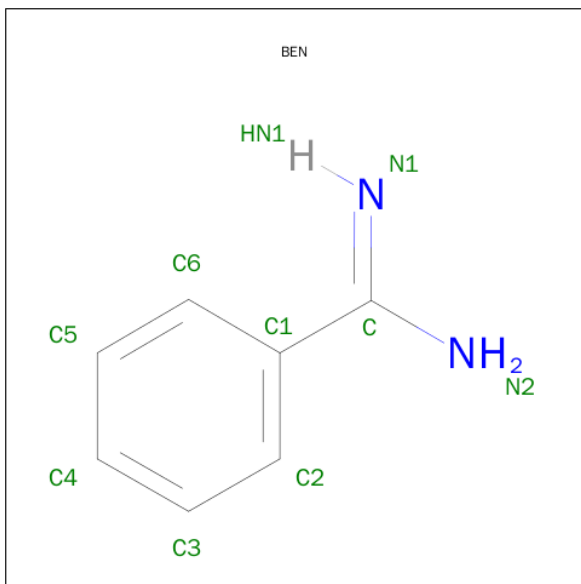


Mol	Chain	Residues	Atoms			ZeroOcc	AltConf
2	A	1	Total	O	S	0	0
			5	4	1		
2	C	1	Total	O	S	0	0
			5	4	1		

- Molecule 3 is a polymer of unknown type called SUGAR (3-MER).

Mol	Chain	Residues	Atoms				ZeroOcc	AltConf
3	A	3	Total	C	N	O	0	0
			42	24	3	15		

- Molecule 4 is BENZAMIDINE (three-letter code: BEN) (formula:  $C_7H_8N_2$ ).



Mol	Chain	Residues	Atoms				ZeroOcc	AltConf
4	B	1	Total	C	N		0	0
			9	7	2			

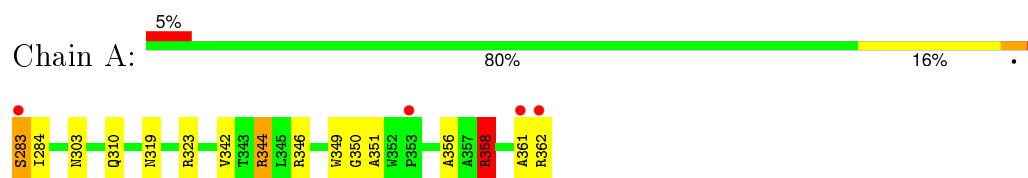
- Molecule 5 is water.

Mol	Chain	Residues	Atoms		ZeroOcc	AltConf
5	A	166	Total	O	0	0
			166	166		
5	B	162	Total	O	0	0
			162	162		
5	C	141	Total	O	0	0
			141	141		
5	D	144	Total	O	0	0
			144	144		

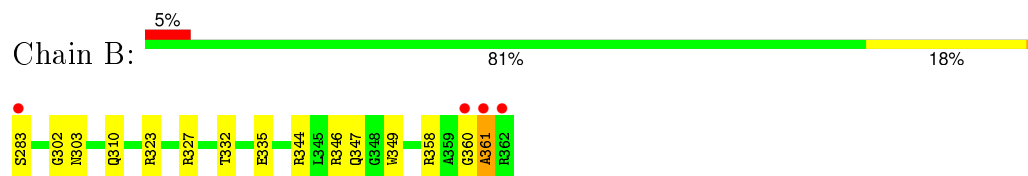
### 3 Residue-property plots [i](#)

These plots are drawn for all protein, RNA and DNA chains in the entry. The first graphic for a chain summarises the proportions of errors displayed in the second graphic. The second graphic shows the sequence view annotated by issues in geometry and electron density. Residues are color-coded according to the number of geometric quality criteria for which they contain at least one outlier: green = 0, yellow = 1, orange = 2 and red = 3 or more. A red dot above a residue indicates a poor fit to the electron density ( $RSRZ > 2$ ). Stretches of 2 or more consecutive residues without any outlier are shown as a green connector. Residues present in the sample, but not in the model, are shown in grey.

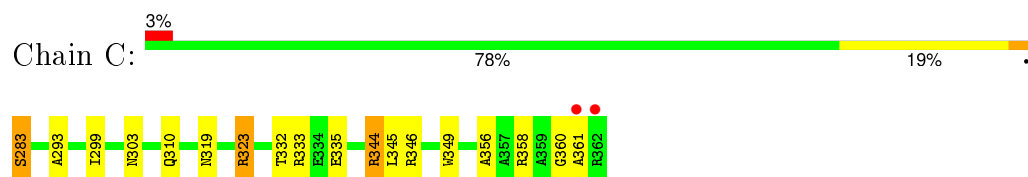
- Molecule 1: Resuscitation-promoting factor RpfB



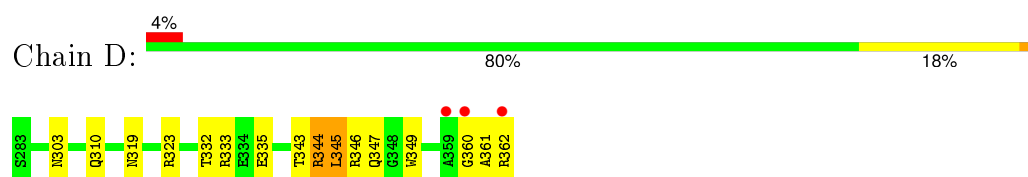
- Molecule 1: Resuscitation-promoting factor RpfB



- Molecule 1: Resuscitation-promoting factor RpfB



- Molecule 1: Resuscitation-promoting factor RpfB



## 4 Data and refinement statistics

Property	Value	Source
Space group	P 1 21 1	Depositor
Cell constants a, b, c, $\alpha$ , $\beta$ , $\gamma$	42.45Å 51.51Å 66.71Å 90.00° 104.39° 90.00°	Depositor
Resolution (Å)	15.00 – 1.33 19.31 – 1.33	Depositor EDS
% Data completeness (in resolution range)	83.3 (15.00-1.33) 83.3 (19.31-1.33)	Depositor EDS
$R_{merge}$	(Not available)	Depositor
$R_{sym}$	(Not available)	Depositor
$\langle I/\sigma(I) \rangle$ <sup>1</sup>	2.24 (at 1.33Å)	Xtriage
Refinement program	REFMAC 5.5.0110	Depositor
R, $R_{free}$	0.177 , 0.229 0.179 , 0.231	Depositor DCC
$R_{free}$ test set	2996 reflections (5.91%)	DCC
Wilson B-factor (Å <sup>2</sup> )	12.7	Xtriage
Anisotropy	0.458	Xtriage
Bulk solvent $k_{sol}$ (e/Å <sup>3</sup> ), $B_{sol}$ (Å <sup>2</sup> )	0.36 , 64.8	EDS
Estimated twinning fraction	No twinning to report.	Xtriage
L-test for twinning <sup>2</sup>	$\langle  L  \rangle = 0.48$ , $\langle L^2 \rangle = 0.32$	Xtriage
Outliers	0 of 59361 reflections	Xtriage
$F_o, F_c$ correlation	0.96	EDS
Total number of atoms	3066	wwPDB-VP
Average B, all atoms (Å <sup>2</sup> )	22.0	wwPDB-VP

Xtriage's analysis on translational NCS is as follows: *The largest off-origin peak in the Patterson function is 14.58% of the height of the origin peak. No significant pseudotranslation is detected.*

<sup>1</sup>Intensities estimated from amplitudes.

<sup>2</sup>Theoretical values of  $\langle |L| \rangle$ ,  $\langle L^2 \rangle$  for acentric reflections are 0.5, 0.375 respectively for untwinned datasets, and 0.333, 0.2 for perfectly twinned datasets.

## 5 Model quality

### 5.1 Standard geometry

Bond lengths and bond angles in the following residue types are not validated in this section: BEN, NAG, SO4

The Z score for a bond length (or angle) is the number of standard deviations the observed value is removed from the expected value. A bond length (or angle) with  $|Z| > 5$  is considered an outlier worth inspection. RMSZ is the root-mean-square of all Z scores of the bond lengths (or angles).

Mol	Chain	Bond lengths		Bond angles	
		RMSZ	$\# Z  > 5$	RMSZ	$\# Z  > 5$
1	A	0.86	1/613 (0.2%)	0.90	0/835
1	B	0.85	0/613	0.91	2/835 (0.2%)
1	C	0.87	0/613	0.91	1/835 (0.1%)
1	D	0.82	0/613	1.08	5/835 (0.6%)
All	All	0.85	1/2452 (0.0%)	0.95	8/3340 (0.2%)

Chiral center outliers are detected by calculating the chiral volume of a chiral center and verifying if the center is modelled as a planar moiety or with the opposite hand. A planarity outlier is detected by checking planarity of atoms in a peptide group, atoms in a mainchain group or atoms of a sidechain that are expected to be planar.

Mol	Chain	#Chirality outliers	#Planarity outliers
3	A	1	0

All (1) bond length outliers are listed below:

Mol	Chain	Res	Type	Atoms	Z	Observed(Å)	Ideal(Å)
1	A	358	ARG	CB-CG	5.03	1.66	1.52

All (8) bond angle outliers are listed below:

Mol	Chain	Res	Type	Atoms	Z	Observed(°)	Ideal(°)
1	D	344	ARG	NE-CZ-NH2	-13.58	113.51	120.30
1	D	344	ARG	NE-CZ-NH1	11.38	125.99	120.30
1	B	327	ARG	NE-CZ-NH1	-6.69	116.95	120.30
1	D	345	LEU	CA-CB-CG	5.90	128.88	115.30
1	D	344	ARG	CD-NE-CZ	5.77	131.67	123.60
1	C	358	ARG	NE-CZ-NH2	-5.60	117.50	120.30
1	B	358	ARG	NE-CZ-NH2	5.55	123.08	120.30
1	D	345	LEU	CB-CG-CD2	5.12	119.71	111.00



All (1) chirality outliers are listed below:

Mol	Chain	Res	Type	Atom
3	A	602	NAG	C5

There are no planarity outliers.

## 5.2 Too-close contacts ⓘ

In the following table, the Non-H and H(model) columns list the number of non-hydrogen atoms and hydrogen atoms in the chain respectively. The H(added) column lists the number of hydrogen atoms added and optimized by MolProbity. The Clashes column lists the number of clashes within the asymmetric unit, whereas Symm-Clashes lists symmetry related clashes.

Mol	Chain	Non-H	H(model)	H(added)	Clashes	Symm-Clashes
1	A	598	0	549	12	0
1	B	598	0	549	16	0
1	C	598	0	549	26	2
1	D	598	0	549	17	1
2	A	5	0	0	0	0
2	C	5	0	0	0	0
3	A	42	0	37	0	0
4	B	9	0	7	0	0
5	A	166	0	0	2	0
5	B	162	0	0	3	2
5	C	141	0	0	7	0
5	D	144	0	0	5	1
All	All	3066	0	2240	70	3

The all-atom clashscore is defined as the number of clashes found per 1000 atoms (including hydrogen atoms). The all-atom clashscore for this structure is 15.

All (70) close contacts within the same asymmetric unit are listed below, sorted by their clash magnitude.

Atom-1	Atom-2	Interatomic distance (Å)	Clash overlap (Å)
1:C:344:ARG:HH21	1:C:345:LEU:CD2	1.63	1.11
1:C:344:ARG:HH21	1:C:345:LEU:HD23	0.95	1.07
1:A:283:SER:HA	5:A:4039:HOH:O	1.59	1.02
1:D:343:THR:HG23	1:D:347:GLN:HE22	1.18	1.01
1:C:344:ARG:NH2	1:C:345:LEU:HD23	1.78	0.97
1:D:343:THR:HG23	1:D:347:GLN:NE2	1.90	0.87
1:C:332:THR:HG21	5:C:618:HOH:O	1.77	0.83

*Continued on next page...*

*Continued from previous page...*

Atom-1	Atom-2	Interatomic distance (Å)	Clash overlap (Å)
1:C:283:SER:HB3	5:C:549:HOH:O	1.78	0.83
1:C:344:ARG:NH1	5:C:556:HOH:O	2.10	0.82
1:C:332:THR:HG23	1:C:335:GLU:H	1.45	0.81
1:D:332:THR:HG21	5:D:465:HOH:O	1.86	0.76
1:B:344:ARG:HD2	1:B:349:TRP:CZ2	2.21	0.76
1:D:332:THR:HG23	1:D:335:GLU:H	1.49	0.75
1:C:344:ARG:NH2	1:C:345:LEU:CD2	2.44	0.70
1:B:344:ARG:CD	1:B:349:TRP:CZ2	2.77	0.68
1:D:343:THR:CG2	1:D:347:GLN:NE2	2.57	0.67
1:D:362:ARG:HG3	1:D:362:ARG:O	1.94	0.66
1:B:332:THR:HG23	1:B:335:GLU:H	1.61	0.65
1:A:319:ASN:HD21	1:A:346:ARG:HH11	1.43	0.64
1:C:303:ASN:HD21	1:C:310:GLN:HE22	1.47	0.62
1:C:319:ASN:HA	5:C:623:HOH:O	1.98	0.62
1:D:343:THR:CG2	1:D:347:GLN:HE22	2.01	0.62
1:C:319:ASN:ND2	1:C:346:ARG:HD3	2.16	0.61
1:B:346:ARG:HB3	1:B:346:ARG:CZ	2.30	0.60
1:B:303:ASN:HD21	1:B:310:GLN:HE22	1.48	0.60
1:A:319:ASN:ND2	1:A:346:ARG:HH11	2.01	0.59
1:C:344:ARG:HD2	1:C:349:TRP:CZ2	2.38	0.58
1:A:303:ASN:HD21	1:A:310:GLN:HE22	1.49	0.58
1:C:332:THR:HB	5:C:537:HOH:O	2.05	0.56
1:A:319:ASN:HD22	1:A:342:VAL:HG12	1.71	0.55
1:A:349:TRP:HE1	1:A:362:ARG:HB2	1.70	0.55
1:C:332:THR:OG1	1:C:333:ARG:N	2.40	0.55
1:A:358:ARG:HD2	1:B:302:GLY:O	2.07	0.54
1:C:319:ASN:ND2	5:C:623:HOH:O	2.40	0.53
1:C:319:ASN:HD21	1:C:346:ARG:HD3	1.73	0.53
1:B:332:THR:HG22	1:B:335:GLU:CG	2.40	0.52
1:C:346:ARG:NH1	5:C:623:HOH:O	2.06	0.50
1:C:332:THR:HG22	1:C:335:GLU:CG	2.41	0.50
1:D:347:GLN:OE1	5:D:520:HOH:O	2.20	0.50
1:A:284:ILE:HD11	1:A:361:ALA:HB2	1.94	0.49
1:B:332:THR:HG22	1:B:335:GLU:HG3	1.94	0.49
1:D:303:ASN:HD21	1:D:310:GLN:HE22	1.60	0.49
1:D:332:THR:CG2	1:D:335:GLU:H	2.23	0.48
1:D:347:GLN:CD	5:D:520:HOH:O	2.51	0.47
1:C:344:ARG:HH21	1:C:345:LEU:HD21	1.70	0.47
1:A:323:ARG:HD3	5:A:4122:HOH:O	2.13	0.47
1:C:332:THR:HG22	1:C:335:GLU:HG3	1.96	0.47
1:B:344:ARG:HD2	1:B:349:TRP:HZ2	1.79	0.47

*Continued on next page...*

Continued from previous page...

Atom-1	Atom-2	Interatomic distance (Å)	Clash overlap (Å)
1:B:347:GLN:NE2	5:B:837:HOH:O	2.45	0.47
1:B:360:GLY:O	1:B:361:ALA:O	2.33	0.47
1:B:283:SER:HA	5:B:836:HOH:O	2.15	0.46
1:B:332:THR:CG2	1:B:335:GLU:H	2.27	0.46
1:D:347:GLN:NE2	5:D:456:HOH:O	2.49	0.46
1:B:360:GLY:HA2	5:B:950:HOH:O	2.16	0.45
1:C:332:THR:CG2	1:C:335:GLU:H	2.22	0.45
1:C:356:ALA:HB1	1:C:361:ALA:HB2	1.98	0.45
1:D:332:THR:HG22	1:D:335:GLU:CG	2.47	0.45
1:C:332:THR:CG2	1:C:335:GLU:HG3	2.47	0.44
1:B:344:ARG:HD3	1:B:349:TRP:CZ2	2.52	0.44
1:D:319:ASN:ND2	1:D:346:ARG:HH21	2.16	0.44
1:D:349:TRP:CD2	1:D:361:ALA:HB1	2.52	0.44
1:A:349:TRP:C	1:A:351:ALA:N	2.72	0.42
1:C:349:TRP:CD2	1:C:361:ALA:HB1	2.54	0.42
1:D:332:THR:OG1	1:D:333:ARG:N	2.52	0.42
1:B:303:ASN:HD21	1:B:310:GLN:NE2	2.16	0.41
1:A:344:ARG:HH21	1:A:362:ARG:CD	2.33	0.41
1:A:356:ALA:O	1:A:361:ALA:HB3	2.21	0.41
1:C:293:ALA:HB1	1:C:299:ILE:HG21	2.03	0.41
1:D:347:GLN:CG	5:D:520:HOH:O	2.68	0.41
1:C:344:ARG:NH2	1:C:345:LEU:HD21	2.31	0.40

All (3) symmetry-related close contacts are listed below. The label for Atom-2 includes the symmetry operator and encoded unit-cell translations to be applied.

Atom-1	Atom-2	Interatomic distance (Å)	Clash overlap (Å)
1:C:360:GLY:O	1:D:360:GLY:O[2_546]	2.03	0.17
5:B:925:HOH:O	5:D:451:HOH:O[2_645]	2.16	0.04
1:C:323:ARG:NH2	5:B:881:HOH:O[1_455]	2.19	0.01

## 5.3 Torsion angles ⓘ

### 5.3.1 Protein backbone ⓘ

In the following table, the Percentiles column shows the percent Ramachandran outliers of the chain as a percentile score with respect to all X-ray entries followed by that with respect to entries of similar resolution.

The Analysed column shows the number of residues for which the backbone conformation was

analysed, and the total number of residues.

Mol	Chain	Analysed	Favoured	Allowed	Outliers	Percentiles	
1	A	78/80 (98%)	76 (97%)	1 (1%)	1 (1%)	15	1
1	B	78/80 (98%)	75 (96%)	2 (3%)	1 (1%)	15	1
1	C	78/80 (98%)	76 (97%)	2 (3%)	0	100	100
1	D	78/80 (98%)	76 (97%)	2 (3%)	0	100	100
All	All	312/320 (98%)	303 (97%)	7 (2%)	2 (1%)	30	6

All (2) Ramachandran outliers are listed below:

Mol	Chain	Res	Type
1	B	361	ALA
1	A	350	GLY

### 5.3.2 Protein sidechains ⓘ

In the following table, the Percentiles column shows the percent sidechain outliers of the chain as a percentile score with respect to all X-ray entries followed by that with respect to entries of similar resolution.

The Analysed column shows the number of residues for which the sidechain conformation was analysed, and the total number of residues.

Mol	Chain	Analysed	Rotameric	Outliers	Percentiles	
1	A	51/52 (98%)	48 (94%)	3 (6%)	24	1
1	B	51/52 (98%)	50 (98%)	1 (2%)	63	23
1	C	51/52 (98%)	48 (94%)	3 (6%)	24	1
1	D	51/52 (98%)	48 (94%)	3 (6%)	24	1
All	All	204/208 (98%)	194 (95%)	10 (5%)	31	3

All (10) residues with a non-rotameric sidechain are listed below:

Mol	Chain	Res	Type
1	A	283	SER
1	A	344	ARG
1	A	358	ARG
1	B	323	ARG
1	C	283	SER
1	C	323	ARG
1	C	344	ARG

*Continued on next page...*

*Continued from previous page...*

Mol	Chain	Res	Type
1	D	323	ARG
1	D	344	ARG
1	D	345	LEU

Some sidechains can be flipped to improve hydrogen bonding and reduce clashes. All (9) such sidechains are listed below:

Mol	Chain	Res	Type
1	A	310	GLN
1	A	319	ASN
1	A	347	GLN
1	B	310	GLN
1	C	310	GLN
1	C	319	ASN
1	D	310	GLN
1	D	319	ASN
1	D	347	GLN

### 5.3.3 RNA ⓘ

There are no RNA molecules in this entry.

## 5.4 Non-standard residues in protein, DNA, RNA chains ⓘ

There are no non-standard protein/DNA/RNA residues in this entry.

## 5.5 Carbohydrates ⓘ

3 carbohydrates are modelled in this entry.

In the following table, the Counts columns list the number of bonds (or angles) for which Mogul statistics could be retrieved, the number of bonds (or angles) that are observed in the model and the number of bonds (or angles) that are defined in the chemical component dictionary. The Link column lists molecule types, if any, to which the group is linked. The Z score for a bond length (or angle) is the number of standard deviations the observed value is removed from the expected value. A bond length (or angle) with  $|Z| > 2$  is considered an outlier worth inspection. RMSZ is the root-mean-square of all Z scores of the bond lengths (or angles).

Mol	Type	Chain	Res	Link	Bond lengths			Bond angles		
					Counts	RMSZ	$\# Z  > 2$	Counts	RMSZ	$\# Z  > 2$
3	NAG	A	602	3	14,14,15	0.68	0	15,19,21	1.48	3 (20%)

Mol	Type	Chain	Res	Link	Bond lengths			Bond angles		
					Counts	RMSZ	# Z  > 2	Counts	RMSZ	# Z  > 2
3	NAG	A	603	3	14,14,15	0.60	0	15,19,21	1.35	1 (6%)
3	NAG	A	604	3	14,14,15	0.50	0	15,19,21	1.25	2 (13%)

In the following table, the Chirals column lists the number of chiral outliers, the number of chiral centers analysed, the number of these observed in the model and the number defined in the chemical component dictionary. Similar counts are reported in the Torsion and Rings columns. '-' means no outliers of that kind were identified.

Mol	Type	Chain	Res	Link	Chirals	Torsions	Rings
3	NAG	A	602	3	1/1/5/7	1/6/23/26	0/1/1/1
3	NAG	A	603	3	-	0/6/23/26	0/1/1/1
3	NAG	A	604	3	-	0/6/23/26	0/1/1/1

There are no bond length outliers.

All (6) bond angle outliers are listed below:

Mol	Chain	Res	Type	Atoms	Z	Observed(°)	Ideal(°)
3	A	603	NAG	O4-C4-C3	-3.20	103.13	110.34
3	A	604	NAG	O7-C7-C8	-2.19	118.03	122.06
3	A	602	NAG	C4-C3-C2	2.39	114.94	111.23
3	A	602	NAG	C3-C4-C5	2.39	114.36	110.20
3	A	604	NAG	O5-C5-C6	2.41	112.57	107.35
3	A	602	NAG	O5-C5-C6	3.20	114.28	107.35

All (1) chirality outliers are listed below:

Mol	Chain	Res	Type	Atom
3	A	602	NAG	C5

All (1) torsion outliers are listed below:

Mol	Chain	Res	Type	Atoms
3	A	602	NAG	O7-C7-N2-C2

There are no ring outliers.

No monomer is involved in short contacts.

## 5.6 Ligand geometry

3 ligands are modelled in this entry.

In the following table, the Counts columns list the number of bonds (or angles) for which Mogul statistics could be retrieved, the number of bonds (or angles) that are observed in the model and the number of bonds (or angles) that are defined in the chemical component dictionary. The Link column lists molecule types, if any, to which the group is linked. The Z score for a bond length (or angle) is the number of standard deviations the observed value is removed from the expected value. A bond length (or angle) with  $|Z| > 2$  is considered an outlier worth inspection. RMSZ is the root-mean-square of all Z scores of the bond lengths (or angles).

Mol	Type	Chain	Res	Link	Bond lengths			Bond angles		
					Counts	RMSZ	$\# Z  > 2$	Counts	RMSZ	$\# Z  > 2$
2	SO4	A	601	-	4,4,4	0.22	0	6,6,6	0.55	0
4	BEN	B	701	-	9,9,9	1.67	1 (11%)	9,11,11	0.84	0
2	SO4	C	401	-	4,4,4	0.43	0	6,6,6	0.84	0

In the following table, the Chirals column lists the number of chiral outliers, the number of chiral centers analysed, the number of these observed in the model and the number defined in the chemical component dictionary. Similar counts are reported in the Torsion and Rings columns. '-' means no outliers of that kind were identified.

Mol	Type	Chain	Res	Link	Chirals	Torsions	Rings
2	SO4	A	601	-	-	0/0/0/0	0/0/0/0
4	BEN	B	701	-	-	0/4/4/4	0/1/1/1
2	SO4	C	401	-	-	0/0/0/0	0/0/0/0

All (1) bond length outliers are listed below:

Mol	Chain	Res	Type	Atoms	Z	Observed(Å)	Ideal(Å)
4	B	701	BEN	C1-C	-4.44	1.40	1.47

There are no bond angle outliers.

There are no chirality outliers.

There are no torsion outliers.

There are no ring outliers.

No monomer is involved in short contacts.

## 5.7 Other polymers

There are no such residues in this entry.

## 5.8 Polymer linkage issues ⓘ

There are no chain breaks in this entry.



## 6 Fit of model and data ⓘ

### 6.1 Protein, DNA and RNA chains ⓘ

In the following table, the column labelled ‘#RSRZ> 2’ contains the number (and percentage) of RSRZ outliers, followed by percent RSRZ outliers for the chain as percentile scores relative to all X-ray entries and entries of similar resolution. The OWAB column contains the minimum, median, 95<sup>th</sup> percentile and maximum values of the occupancy-weighted average B-factor per residue. The column labelled ‘Q< 0.9’ lists the number of (and percentage) of residues with an average occupancy less than 0.9.

Mol	Chain	Analysed	<RSRZ>	#RSRZ>2	OWAB(Å <sup>2</sup> )	Q<0.9
1	A	80/80 (100%)	0.13	4 (5%) 32 32	13, 16, 29, 43	0
1	B	80/80 (100%)	0.14	4 (5%) 32 32	12, 16, 29, 49	0
1	C	80/80 (100%)	0.10	2 (2%) 61 63	12, 16, 28, 44	0
1	D	80/80 (100%)	0.14	3 (3%) 44 45	14, 17, 31, 37	0
All	All	320/320 (100%)	0.13	13 (4%) 41 41	12, 17, 31, 49	0

All (13) RSRZ outliers are listed below:

Mol	Chain	Res	Type	RSRZ
1	B	361	ALA	8.6
1	C	361	ALA	6.9
1	B	360	GLY	6.4
1	C	362	ARG	5.2
1	D	359	ALA	5.0
1	A	362	ARG	4.7
1	B	362	ARG	4.5
1	D	362	ARG	4.1
1	A	283	SER	3.5
1	D	360	GLY	3.0
1	A	361	ALA	2.9
1	B	283	SER	2.8
1	A	353	PRO	2.0

### 6.2 Non-standard residues in protein, DNA, RNA chains ⓘ

There are no non-standard protein/DNA/RNA residues in this entry.

### 6.3 Carbohydrates [i](#)

In the following table, the Atoms column lists the number of modelled atoms in the group and the number defined in the chemical component dictionary. LLDF column lists the quality of electron density of the group with respect to its neighbouring residues in protein, DNA or RNA chains. The B-factors column lists the minimum, median, 95<sup>th</sup> percentile and maximum values of B factors of atoms in the group. The column labelled 'Q< 0.9' lists the number of atoms with occupancy less than 0.9.

Mol	Type	Chain	Res	Atoms	RSCC	RSR	LLDF	B-factors(Å <sup>2</sup> )	Q<0.9
3	NAG	A	604	14/15	0.78	0.23	9.62	25,31,37,38	14
3	NAG	A	602	14/15	0.68	0.20	3.91	27,32,41,41	14
3	NAG	A	603	14/15	0.87	0.17	3.40	17,25,33,38	14

### 6.4 Ligands [i](#)

In the following table, the Atoms column lists the number of modelled atoms in the group and the number defined in the chemical component dictionary. LLDF column lists the quality of electron density of the group with respect to its neighbouring residues in protein, DNA or RNA chains. The B-factors column lists the minimum, median, 95<sup>th</sup> percentile and maximum values of B factors of atoms in the group. The column labelled 'Q< 0.9' lists the number of atoms with occupancy less than 0.9.

Mol	Type	Chain	Res	Atoms	RSCC	RSR	LLDF	B-factors(Å <sup>2</sup> )	Q<0.9
4	BEN	B	701	9/9	0.94	0.08	0.66	20,22,24,25	0
2	SO4	A	601	5/5	0.98	0.05	-0.91	17,17,19,19	0
2	SO4	C	401	5/5	0.97	0.10	-	20,24,27,28	0

### 6.5 Other polymers [i](#)

There are no such residues in this entry.