



# wwPDB X-ray Structure Validation Summary Report ⓘ

Feb 1, 2016 – 10:04 AM GMT

PDB ID : 3KRF  
Title : Mint heterotetrameric geranyl pyrophosphate synthase in complex with magnesium, IPP, and DMASPP (I)  
Authors : Chang, T.-H.; Hsieh, F.-L.; Ko, T.-P.; Wang, A.H.-J.  
Deposited on : 2009-11-18  
Resolution : 2.20 Å(reported)

This is a wwPDB X-ray Structure Validation Summary Report for a publicly released PDB entry.  
We welcome your comments at [validation@mail.wwpdb.org](mailto:validation@mail.wwpdb.org)  
A user guide is available at  
<http://wwpdb.org/validation/2016/XrayValidationReportHelp>  
with specific help available everywhere you see the ⓘ symbol.

---

The following versions of software and data (see [references ⓘ](#)) were used in the production of this report:

MolProbity : 4.02b-467  
Mogul : 1.7 (RC4), CSD as536be (2015)  
Xtriage (Phenix) : 1.9-1692  
EDS : rb-20026688  
Percentile statistics : 20151230.v01 (using entries in the PDB archive December 30th 2015)  
Refmac : 5.8.0135  
CCP4 : 6.5.0  
Ideal geometry (proteins) : Engh & Huber (2001)  
Ideal geometry (DNA, RNA) : Parkinson et al. (1996)  
Validation Pipeline (wwPDB-VP) : trunk26865

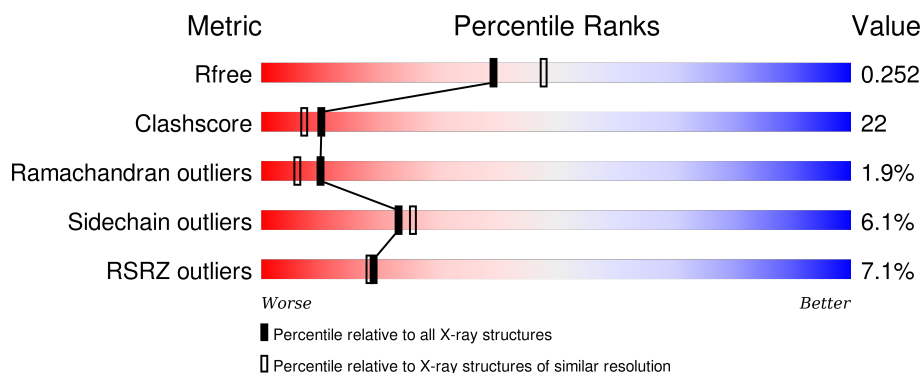
# 1 Overall quality at a glance

The following experimental techniques were used to determine the structure:

## *X-RAY DIFFRACTION*

The reported resolution of this entry is 2.20 Å.

Percentile scores (ranging between 0-100) for global validation metrics of the entry are shown in the following graphic. The table shows the number of entries on which the scores are based.



Metric	Whole archive (#Entries)	Similar resolution (#Entries, resolution range(Å))
$R_{free}$	91344	3774 (2.20-2.20)
Clashscore	102246	4477 (2.20-2.20)
Ramachandran outliers	100387	4404 (2.20-2.20)
Sidechain outliers	100360	4405 (2.20-2.20)
RSRZ outliers	91569	3781 (2.20-2.20)

The table below summarises the geometric issues observed across the polymeric chains and their fit to the electron density. The red, orange, yellow and green segments on the lower bar indicate the fraction of residues that contain outliers for  $\geq 3$ , 2, 1 and 0 types of geometric quality criteria. A grey segment represents the fraction of residues that are not modelled. The numeric value for each fraction is indicated below the corresponding segment, with a dot representing fractions  $\leq 5\%$ . The upper red bar (where present) indicates the fraction of residues that have poor fit to the electron density. The numeric value is given above the bar.

Mol	Chain	Length	Quality of chain
1	A	295	<div> <div>2%</div> <div>65%</div> <div>26%</div> <div>5%</div> </div>
1	D	295	<div> <div>7%</div> <div>68%</div> <div>27%</div> <div>•</div> </div>
2	B	274	<div> <div>9%</div> <div>57%</div> <div>31%</div> <div>5% • 5%</div> </div>
2	C	274	<div> <div>9%</div> <div>62%</div> <div>27%</div> <div>• • 5%</div> </div>

The following table lists non-polymeric compounds, carbohydrate monomers and non-standard

residues in protein, DNA, RNA chains that are outliers for geometric or electron-density-fit criteria:

Mol	Type	Chain	Res	Chirality	Geometry	Clashes	Electron density
5	EDO	C	805	-	-	-	X

## 2 Entry composition

There are 8 unique types of molecules in this entry. The entry contains 9075 atoms, of which 0 are hydrogens and 0 are deuteriums.

In the tables below, the ZeroOcc column contains the number of atoms modelled with zero occupancy, the AltConf column contains the number of residues with at least one atom in alternate conformation and the Trace column contains the number of residues modelled with at most 2 atoms.

- Molecule 1 is a protein called Geranyl diphosphate synthase large subunit.

Mol	Chain	Residues	Atoms					ZeroOcc	AltConf	Trace
1	A	279	Total	C	N	O	S	0	0	0
			2120	1338	372	392	18			
1	D	295	Total	C	N	O	S	0	0	0
			2232	1406	391	417	18			

There are 2 discrepancies between the modelled and reference sequences:

Chain	Residue	Modelled	Actual	Comment	Reference
A	1	MET	-	EXPRESSION TAG	UNP Q9SBR3
D	1	MET	-	EXPRESSION TAG	UNP Q9SBR3

- Molecule 2 is a protein called Geranyl diphosphate synthase small subunit.

Mol	Chain	Residues	Atoms					ZeroOcc	AltConf	Trace
2	B	259	Total	C	N	O	S	0	0	0
			1954	1233	339	368	14			
2	C	259	Total	C	N	O	S	0	0	0
			1954	1233	339	368	14			

There are 18 discrepancies between the modelled and reference sequences:

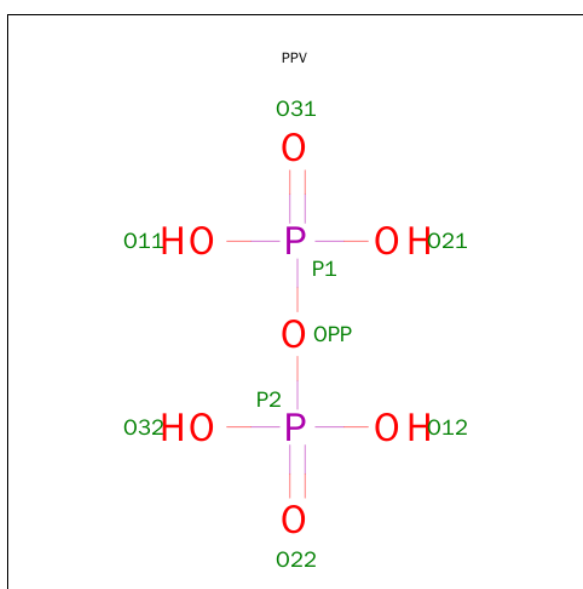
Chain	Residue	Modelled	Actual	Comment	Reference
B	1	MET	-	EXPRESSION TAG	UNP Q9SBR4
B	267	HIS	-	EXPRESSION TAG	UNP Q9SBR4
B	268	HIS	-	EXPRESSION TAG	UNP Q9SBR4
B	269	HIS	-	EXPRESSION TAG	UNP Q9SBR4
B	270	HIS	-	EXPRESSION TAG	UNP Q9SBR4
B	271	HIS	-	EXPRESSION TAG	UNP Q9SBR4
B	272	HIS	-	EXPRESSION TAG	UNP Q9SBR4
B	273	HIS	-	EXPRESSION TAG	UNP Q9SBR4
B	274	HIS	-	EXPRESSION TAG	UNP Q9SBR4
C	1	MET	-	EXPRESSION TAG	UNP Q9SBR4

*Continued on next page...*

Continued from previous page...

Chain	Residue	Modelled	Actual	Comment	Reference
C	267	HIS	-	EXPRESSION TAG	UNP Q9SBR4
C	268	HIS	-	EXPRESSION TAG	UNP Q9SBR4
C	269	HIS	-	EXPRESSION TAG	UNP Q9SBR4
C	270	HIS	-	EXPRESSION TAG	UNP Q9SBR4
C	271	HIS	-	EXPRESSION TAG	UNP Q9SBR4
C	272	HIS	-	EXPRESSION TAG	UNP Q9SBR4
C	273	HIS	-	EXPRESSION TAG	UNP Q9SBR4
C	274	HIS	-	EXPRESSION TAG	UNP Q9SBR4

- Molecule 3 is PYROPHOSPHATE (three-letter code: PPV) (formula:  $\text{H}_4\text{O}_7\text{P}_2$ ).



Mol	Chain	Residues	Atoms	ZeroOcc	AltConf
3	A	1	Total O P 9 7 2	0	0
3	A	1	Total O P 9 7 2	0	0

- Molecule 4 is MAGNESIUM ION (three-letter code: MG) (formula: Mg).

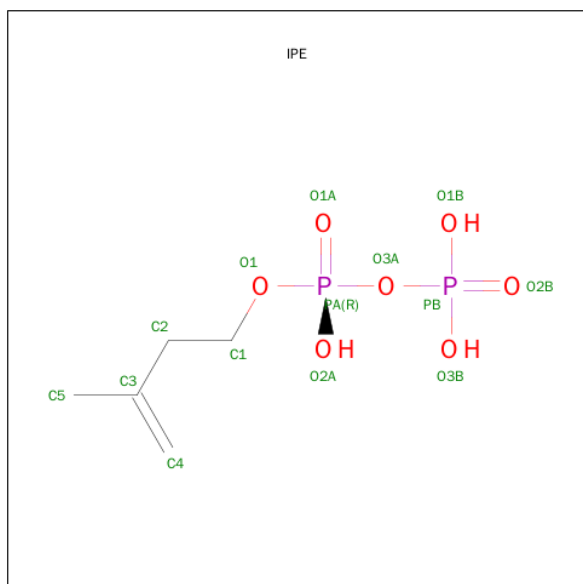
Mol	Chain	Residues	Atoms	ZeroOcc	AltConf
4	A	2	Total Mg 2 2	0	0
4	D	2	Total Mg 2 2	0	0

- Molecule 5 is 1,2-ETHANEDIOL (three-letter code: EDO) (formula:  $\text{C}_2\text{H}_6\text{O}_2$ ).



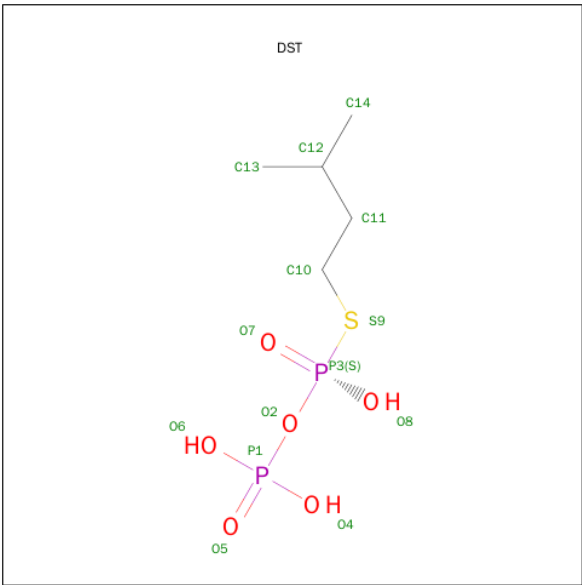
Mol	Chain	Residues	Atoms			ZeroOcc	AltConf
5	C	1	Total	C	O	0	0
			4	2	2		

- Molecule 6 is 3-METHYLBUT-3-ENYL TRIHYDROGEN DIPHOSPHATE (three-letter code: IPE) (formula:  $C_5H_{12}O_7P_2$ ).



Mol	Chain	Residues	Atoms				ZeroOcc	AltConf
6	D	1	Total	C	O	P	0	0
			14	5	7	2		

- Molecule 7 is DIMETHYLALLYL S-THIOLODIPHOSPHATE (three-letter code: DST) (formula:  $C_5H_{14}O_6P_2S$ ).



Mol	Chain	Residues	Atoms					ZeroOcc	AltConf
7	D	1	Total	C	O	P	S	0	0
			14	5	6	2	1		

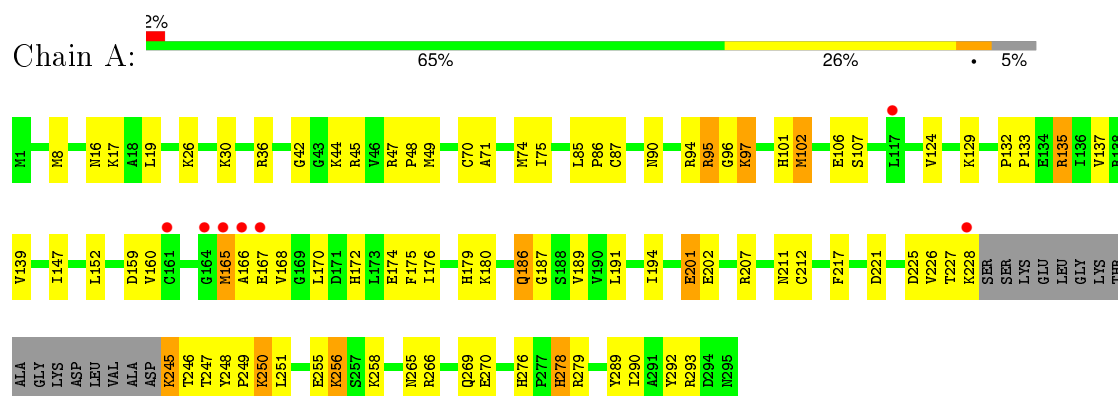
- Molecule 8 is water.

Mol	Chain	Residues	Atoms		ZeroOcc	AltConf
8	A	204	Total	O	0	0
			204	204		
8	B	172	Total	O	0	0
			172	172		
8	C	172	Total	O	0	0
			172	172		
8	D	213	Total	O	0	0
			213	213		

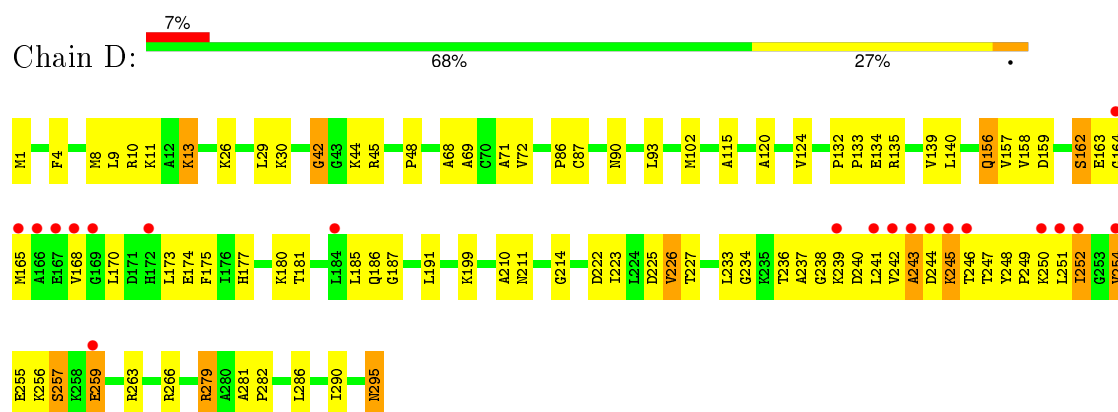
### 3 Residue-property plots [i](#)

These plots are drawn for all protein, RNA and DNA chains in the entry. The first graphic for a chain summarises the proportions of errors displayed in the second graphic. The second graphic shows the sequence view annotated by issues in geometry and electron density. Residues are color-coded according to the number of geometric quality criteria for which they contain at least one outlier: green = 0, yellow = 1, orange = 2 and red = 3 or more. A red dot above a residue indicates a poor fit to the electron density ( $RSRZ > 2$ ). Stretches of 2 or more consecutive residues without any outlier are shown as a green connector. Residues present in the sample, but not in the model, are shown in grey.

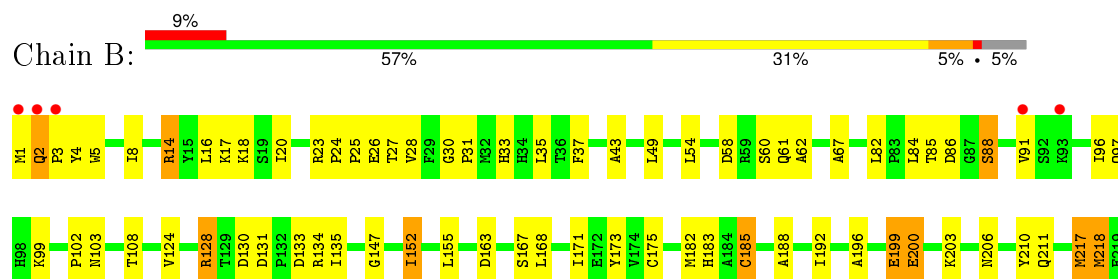
#### • Molecule 1: Geranyl diphosphate synthase large subunit



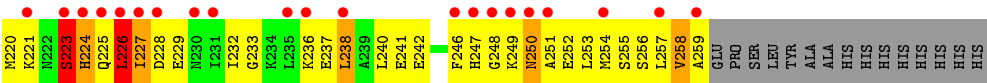
#### • Molecule 1: Geranyl diphosphate synthase large subunit



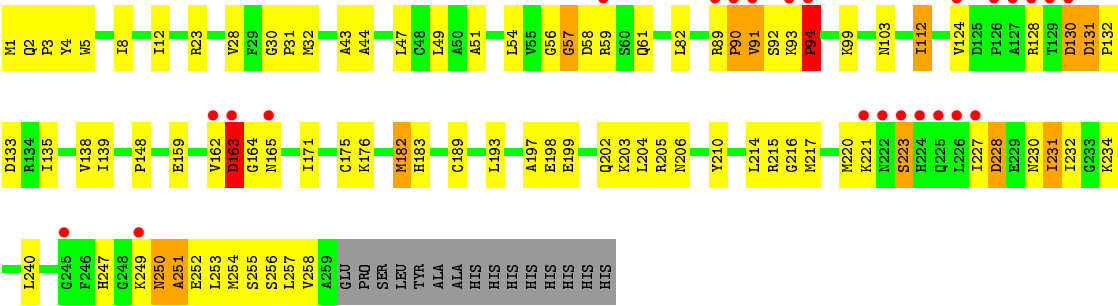
#### • Molecule 2: Geranyl diphosphate synthase small subunit







● Molecule 2: Geranyl diphosphate synthase small subunit



## 4 Data and refinement statistics

Property	Value	Source
Space group	P 21 21 21	Depositor
Cell constants a, b, c, $\alpha$ , $\beta$ , $\gamma$	53.85Å 108.84Å 182.51Å 90.00° 90.00° 90.00°	Depositor
Resolution (Å)	30.00 – 2.20 29.69 – 2.20	Depositor EDS
% Data completeness (in resolution range)	91.5 (30.00-2.20) 91.4 (29.69-2.20)	Depositor EDS
$R_{merge}$	0.08	Depositor
$R_{sym}$	(Not available)	Depositor
$\langle I/\sigma(I) \rangle$ <sup>1</sup>	5.12 (at 2.20Å)	Xtriage
Refinement program	CNS	Depositor
R, $R_{free}$	0.192 , 0.252 0.193 , 0.252	Depositor DCC
$R_{free}$ test set	2535 reflections (5.00%)	DCC
Wilson B-factor (Å <sup>2</sup> )	32.1	Xtriage
Anisotropy	0.929	Xtriage
Bulk solvent $k_{sol}$ (e/Å <sup>3</sup> ), $B_{sol}$ (Å <sup>2</sup> )	0.32 , 54.2	EDS
Estimated twinning fraction	No twinning to report.	Xtriage
L-test for twinning <sup>2</sup>	$\langle  L  \rangle = 0.49$ , $\langle L^2 \rangle = 0.33$	Xtriage
Outliers	1 of 50888 reflections (0.002%)	Xtriage
$F_o, F_c$ correlation	0.96	EDS
Total number of atoms	9075	wwPDB-VP
Average B, all atoms (Å <sup>2</sup> )	51.0	wwPDB-VP

Xtriage's analysis on translational NCS is as follows: *The largest off-origin peak in the Patterson function is 4.75% of the height of the origin peak. No significant pseudotranslation is detected.*

<sup>1</sup>Intensities estimated from amplitudes.

<sup>2</sup>Theoretical values of  $\langle |L| \rangle$ ,  $\langle L^2 \rangle$  for acentric reflections are 0.5, 0.375 respectively for untwinned datasets, and 0.333, 0.2 for perfectly twinned datasets.

## 5 Model quality ⓘ

### 5.1 Standard geometry ⓘ

Bond lengths and bond angles in the following residue types are not validated in this section: PPV, MG, EDO, DST, IPE

The Z score for a bond length (or angle) is the number of standard deviations the observed value is removed from the expected value. A bond length (or angle) with  $|Z| > 5$  is considered an outlier worth inspection. RMSZ is the root-mean-square of all Z scores of the bond lengths (or angles).

Mol	Chain	Bond lengths		Bond angles	
		RMSZ	$\# Z  > 5$	RMSZ	$\# Z  > 5$
1	A	1.01	3/2155 (0.1%)	0.93	2/2903 (0.1%)
1	D	0.91	1/2268 (0.0%)	0.92	1/3055 (0.0%)
2	B	0.90	3/1993 (0.2%)	0.92	3/2695 (0.1%)
2	C	0.83	0/1993	0.89	4/2695 (0.1%)
All	All	0.91	7/8409 (0.1%)	0.91	10/11348 (0.1%)

The worst 5 of 7 bond length outliers are listed below:

Mol	Chain	Res	Type	Atoms	Z	Observed(Å)	Ideal(Å)
2	B	185	CYS	CB-SG	-5.95	1.72	1.81
1	A	102	MET	CG-SD	5.73	1.96	1.81
1	A	212	CYS	CB-SG	5.54	1.91	1.82
2	B	200	GLU	CG-CD	5.30	1.59	1.51
1	D	259	GLU	CG-CD	5.18	1.59	1.51

The worst 5 of 10 bond angle outliers are listed below:

Mol	Chain	Res	Type	Atoms	Z	Observed(°)	Ideal(°)
2	B	226	LEU	N-CA-C	-7.21	91.55	111.00
2	B	86	ASP	N-CA-C	6.22	127.81	111.00
1	A	102	MET	CG-SD-CE	5.89	109.63	100.20
2	C	82	LEU	CA-CB-CG	5.85	128.76	115.30
2	C	23	ARG	NE-CZ-NH1	5.81	123.20	120.30

There are no chirality outliers.

There are no planarity outliers.

## 5.2 Too-close contacts ⓘ

In the following table, the Non-H and H(model) columns list the number of non-hydrogen atoms and hydrogen atoms in the chain respectively. The H(added) column lists the number of hydrogen atoms added and optimized by MolProbity. The Clashes column lists the number of clashes within the asymmetric unit, whereas Symm-Clashes lists symmetry related clashes.

Mol	Chain	Non-H	H(model)	H(added)	Clashes	Symm-Clashes
1	A	2120	0	2146	65	0
1	D	2232	0	2264	94	0
2	B	1954	0	1948	120	1
2	C	1954	0	1948	96	0
3	A	18	0	0	0	0
4	A	2	0	0	0	0
4	D	2	0	0	0	0
5	C	4	0	6	1	0
6	D	14	0	9	2	0
7	D	14	0	10	2	0
8	A	204	0	0	6	0
8	B	172	0	0	12	0
8	C	172	0	0	7	1
8	D	213	0	0	6	3
All	All	9075	0	8331	362	3

The all-atom clashscore is defined as the number of clashes found per 1000 atoms (including hydrogen atoms). The all-atom clashscore for this structure is 22.

The worst 5 of 362 close contacts within the same asymmetric unit are listed below, sorted by their clash magnitude.

Atom-1	Atom-2	Interatomic distance (Å)	Clash overlap (Å)
1:D:102:MET:HG2	8:D:625:HOH:O	1.33	1.22
1:D:10:ARG:HD2	8:D:609:HOH:O	1.41	1.21
2:B:249:LYS:HD3	2:B:253:LEU:HB2	1.36	1.02
2:C:228:ASP:OD2	2:C:230:ASN:HB2	1.63	0.99
2:B:200:GLU:HG3	8:B:475:HOH:O	1.62	0.97

All (3) symmetry-related close contacts are listed below. The label for Atom-2 includes the symmetry operator and encoded unit-cell translations to be applied.

Atom-1	Atom-2	Interatomic distance (Å)	Clash overlap (Å)
8:D:622:HOH:O	8:D:745:HOH:O[1_455]	2.00	0.20
2:B:60:SER:OG	8:D:339:HOH:O[3_555]	2.10	0.10

*Continued on next page...*

*Continued from previous page...*

Atom-1	Atom-2	Interatomic distance (Å)	Clash overlap (Å)
8:C:286:HOH:O	8:D:659:HOH:O[1_655]	2.17	0.03

## 5.3 Torsion angles [i](#)

### 5.3.1 Protein backbone [i](#)

In the following table, the Percentiles column shows the percent Ramachandran outliers of the chain as a percentile score with respect to all X-ray entries followed by that with respect to entries of similar resolution.

The Analysed column shows the number of residues for which the backbone conformation was analysed, and the total number of residues.

Mol	Chain	Analysed	Favoured	Allowed	Outliers	Percentiles	
1	A	275/295 (93%)	265 (96%)	8 (3%)	2 (1%)	26	25
1	D	293/295 (99%)	266 (91%)	21 (7%)	6 (2%)	9	5
2	B	257/274 (94%)	238 (93%)	14 (5%)	5 (2%)	10	6
2	C	257/274 (94%)	233 (91%)	16 (6%)	8 (3%)	5	2
All	All	1082/1138 (95%)	1002 (93%)	59 (6%)	21 (2%)	10	6

5 of 21 Ramachandran outliers are listed below:

Mol	Chain	Res	Type
2	B	223	SER
2	B	227	ILE
2	C	57	GLY
2	C	91	VAL
2	C	163	ASP

### 5.3.2 Protein sidechains [i](#)

In the following table, the Percentiles column shows the percent sidechain outliers of the chain as a percentile score with respect to all X-ray entries followed by that with respect to entries of similar resolution.

The Analysed column shows the number of residues for which the sidechain conformation was analysed, and the total number of residues.

Mol	Chain	Analysed	Rotameric	Outliers	Percentiles	
1	A	222/234 (95%)	208 (94%)	14 (6%)	22	24
1	D	234/234 (100%)	222 (95%)	12 (5%)	29	34
2	B	201/214 (94%)	189 (94%)	12 (6%)	24	26
2	C	201/214 (94%)	187 (93%)	14 (7%)	19	19
All	All	858/896 (96%)	806 (94%)	52 (6%)	23	26

5 of 52 residues with a non-rotameric sidechain are listed below:

Mol	Chain	Res	Type
2	B	224	HIS
2	C	94	PRO
1	D	226	VAL
2	B	228	ASP
2	C	1	MET

Some sidechains can be flipped to improve hydrogen bonding and reduce clashes. 5 of 23 such sidechains are listed below:

Mol	Chain	Res	Type
2	B	156	HIS
2	B	202	GLN
1	D	100	ASN
2	B	183	HIS
2	B	224	HIS

### 5.3.3 RNA ⓘ

There are no RNA molecules in this entry.

## 5.4 Non-standard residues in protein, DNA, RNA chains ⓘ

There are no non-standard protein/DNA/RNA residues in this entry.

## 5.5 Carbohydrates ⓘ

There are no carbohydrates in this entry.

## 5.6 Ligand geometry

Of 9 ligands modelled in this entry, 4 are monoatomic - leaving 5 for Mogul analysis.

In the following table, the Counts columns list the number of bonds (or angles) for which Mogul statistics could be retrieved, the number of bonds (or angles) that are observed in the model and the number of bonds (or angles) that are defined in the chemical component dictionary. The Link column lists molecule types, if any, to which the group is linked. The Z score for a bond length (or angle) is the number of standard deviations the observed value is removed from the expected value. A bond length (or angle) with  $|Z| > 2$  is considered an outlier worth inspection. RMSZ is the root-mean-square of all Z scores of the bond lengths (or angles).

Mol	Type	Chain	Res	Link	Bond lengths			Bond angles		
					Counts	RMSZ	# $ Z  > 2$	Counts	RMSZ	# $ Z  > 2$
3	PPV	A	803	-	6,8,8	1.34	0	11,13,13	2.13	1 (9%)
3	PPV	A	804	4	6,8,8	1.54	1 (16%)	11,13,13	1.92	1 (9%)
5	EDO	C	805	-	3,3,3	0.93	0	2,2,2	0.52	0
6	IPE	D	801	-	10,13,13	2.22	1 (10%)	14,19,19	2.16	4 (28%)
7	DST	D	802	4	8,13,13	1.08	0	11,19,19	2.69	3 (27%)

In the following table, the Chirals column lists the number of chiral outliers, the number of chiral centers analysed, the number of these observed in the model and the number defined in the chemical component dictionary. Similar counts are reported in the Torsion and Rings columns. '-' means no outliers of that kind were identified.

Mol	Type	Chain	Res	Link	Chirals	Torsions	Rings
3	PPV	A	803	-	-	0/6/6/6	0/0/0/0
3	PPV	A	804	4	-	0/6/6/6	0/0/0/0
5	EDO	C	805	-	-	0/1/1/1	0/0/0/0
6	IPE	D	801	-	-	0/13/13/13	0/0/0/0
7	DST	D	802	4	-	0/9/13/13	0/0/0/0

All (2) bond length outliers are listed below:

Mol	Chain	Res	Type	Atoms	Z	Observed(Å)	Ideal(Å)
3	A	804	PPV	P1-O11	2.21	1.62	1.54
6	D	801	IPE	C4-C3	6.56	1.54	1.33

The worst 5 of 9 bond angle outliers are listed below:

Mol	Chain	Res	Type	Atoms	Z	Observed(°)	Ideal(°)
3	A	803	PPV	P2-OPP-P1	-6.66	110.32	132.67
3	A	804	PPV	P2-OPP-P1	-5.90	112.90	132.67
7	D	802	DST	O4-P1-O5	-3.97	97.80	110.58

*Continued on next page...*

*Continued from previous page...*

Mol	Chain	Res	Type	Atoms	Z	Observed(°)	Ideal(°)
6	D	801	IPE	O1-C1-C2	-3.04	94.04	108.63
6	D	801	IPE	O3B-PB-O2B	-2.00	104.14	110.58

There are no chirality outliers.

There are no torsion outliers.

There are no ring outliers.

3 monomers are involved in 4 short contacts:

Mol	Chain	Res	Type	Clashes	Symm-Clashes
5	C	805	EDO	1	0
6	D	801	IPE	2	0
7	D	802	DST	2	0

## 5.7 Other polymers [i](#)

There are no such residues in this entry.

## 5.8 Polymer linkage issues [i](#)

There are no chain breaks in this entry.



## 6 Fit of model and data [i](#)

### 6.1 Protein, DNA and RNA chains [i](#)

In the following table, the column labelled ‘#RSRZ> 2’ contains the number (and percentage) of RSRZ outliers, followed by percent RSRZ outliers for the chain as percentile scores relative to all X-ray entries and entries of similar resolution. The OWAB column contains the minimum, median, 95<sup>th</sup> percentile and maximum values of the occupancy-weighted average B-factor per residue. The column labelled ‘Q< 0.9’ lists the number of (and percentage) of residues with an average occupancy less than 0.9.

Mol	Chain	Analysed	<RSRZ>	#RSRZ>2	OWAB(Å <sup>2</sup> )	Q<0.9
1	A	279/295 (94%)	-0.24	7 (2%) 61 60	27, 39, 65, 98	0
1	D	295/295 (100%)	0.06	20 (6%) 20 20	26, 42, 96, 113	0
2	B	259/274 (94%)	0.28	26 (10%) 9 8	31, 46, 121, 132	0
2	C	259/274 (94%)	0.11	24 (9%) 11 10	29, 48, 97, 115	0
All	All	1092/1138 (95%)	0.05	77 (7%) 19 18	26, 43, 100, 132	0

The worst 5 of 77 RSRZ outliers are listed below:

Mol	Chain	Res	Type	RSRZ
1	D	243	ALA	10.7
2	B	257	LEU	9.7
1	D	251	LEU	8.1
2	B	246	PHE	7.9
2	B	250	ASN	7.5

### 6.2 Non-standard residues in protein, DNA, RNA chains [i](#)

There are no non-standard protein/DNA/RNA residues in this entry.

### 6.3 Carbohydrates [i](#)

There are no carbohydrates in this entry.

### 6.4 Ligands [i](#)

In the following table, the Atoms column lists the number of modelled atoms in the group and the number defined in the chemical component dictionary. LLDF column lists the quality of electron density of the group with respect to its neighbouring residues in protein, DNA or RNA chains. The B-factors column lists the minimum, median, 95<sup>th</sup> percentile and maximum values of B factors

of atoms in the group. The column labelled 'Q< 0.9' lists the number of atoms with occupancy less than 0.9.

Mol	Type	Chain	Res	Atoms	RSCC	RSR	LLDF	B-factors( $\text{\AA}^2$ )	Q<0.9
5	EDO	C	805	4/4	0.97	0.19	2.41	34,37,39,41	0
7	DST	D	802	14/14	0.97	0.21	0.55	54,61,66,66	0
6	IPE	D	801	14/14	0.98	0.18	0.46	42,45,47,50	0
3	PPV	A	803	9/9	0.90	0.14	0.11	117,117,118,118	0
4	MG	D	901	1/1	0.98	0.15	-0.23	52,52,52,52	0
4	MG	D	902	1/1	0.98	0.14	-0.34	53,53,53,53	0
3	PPV	A	804	9/9	0.93	0.11	-0.64	74,76,77,78	0
4	MG	A	904	1/1	0.96	0.04	-	54,54,54,54	0
4	MG	A	903	1/1	0.94	0.06	-	52,52,52,52	0

## 6.5 Other polymers [i](#)

There are no such residues in this entry.