



wwPDB X-ray Structure Validation Summary Report ⓘ

Feb 1, 2016 – 06:10 PM GMT

PDB ID : 4KSZ
Title : Crystal structure of bovine lactoperoxidase complexed with cystiene at 1.98Å resolution
Authors : Singh, R.P.; Singh, N.; Singh, A.K.; Sinha, M.; Kaur, P.; Sharma, S.; Singh, T.P.
Deposited on : 2013-05-19
Resolution : 1.98 Å(reported)

This is a wwPDB X-ray Structure Validation Summary Report for a publicly released PDB entry.
We welcome your comments at validation@mail.wwpdb.org
A user guide is available at
<http://wwpdb.org/validation/2016/XrayValidationReportHelp>
with specific help available everywhere you see the ⓘ symbol.

The following versions of software and data (see [references ⓘ](#)) were used in the production of this report:

MolProbity : 4.02b-467
Mogul : 1.7 (RC4), CSD as536be (2015)
Xtriage (Phenix) : 1.9-1692
EDS : rb-20026688
Percentile statistics : 20151230.v01 (using entries in the PDB archive December 30th 2015)
Refmac : 5.8.0135
CCP4 : 6.5.0
Ideal geometry (proteins) : Engh & Huber (2001)
Ideal geometry (DNA, RNA) : Parkinson et al. (1996)
Validation Pipeline (wwPDB-VP) : trunk26865

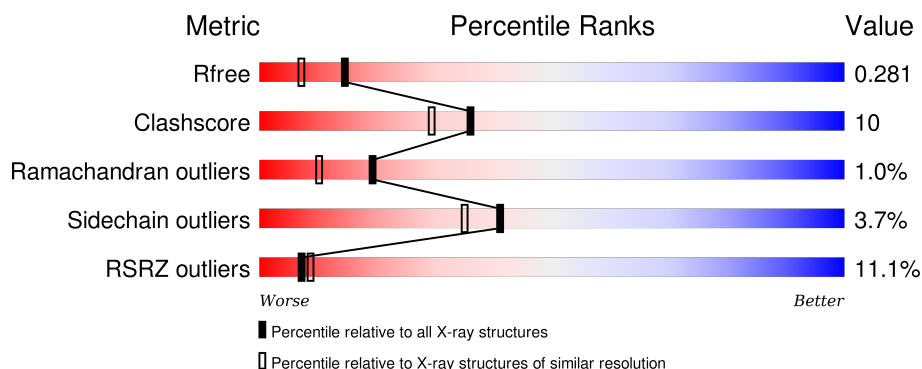
1 Overall quality at a glance

The following experimental techniques were used to determine the structure:

X-RAY DIFFRACTION

The reported resolution of this entry is 1.98 Å.

Percentile scores (ranging between 0-100) for global validation metrics of the entry are shown in the following graphic. The table shows the number of entries on which the scores are based.



Metric	Whole archive (#Entries)	Similar resolution (#Entries, resolution range(Å))
R_{free}	91344	8664 (2.00-1.96)
Clashscore	102246	9905 (2.00-1.96)
Ramachandran outliers	100387	9792 (2.00-1.96)
Sidechain outliers	100360	9791 (2.00-1.96)
RSRZ outliers	91569	8679 (2.00-1.96)

The table below summarises the geometric issues observed across the polymeric chains and their fit to the electron density. The red, orange, yellow and green segments on the lower bar indicate the fraction of residues that contain outliers for ≥ 3 , 2, 1 and 0 types of geometric quality criteria. A grey segment represents the fraction of residues that are not modelled. The numeric value for each fraction is indicated below the corresponding segment, with a dot representing fractions $\leq 5\%$. The upper red bar (where present) indicates the fraction of residues that have poor fit to the electron density. The numeric value is given above the bar.

Mol	Chain	Length	Quality of chain
1	A	595	<div> <div>11%</div> <div>79%</div> <div>18%</div> <div>..</div> </div>

The following table lists non-polymeric compounds, carbohydrate monomers and non-standard residues in protein, DNA, RNA chains that are outliers for geometric or electron-density-fit criteria:

Mol	Type	Chain	Res	Chirality	Geometry	Clashes	Electron density
6	NAG	A	618	-	-	-	X

Continued on next page...

Continued from previous page...

Mol	Type	Chain	Res	Chirality	Geometry	Clashes	Electron density
8	CYS	A	620	-	-	X	X

2 Entry composition [i](#)

There are 9 unique types of molecules in this entry. The entry contains 5209 atoms, of which 0 are hydrogens and 0 are deuteriums.

In the tables below, the ZeroOcc column contains the number of atoms modelled with zero occupancy, the AltConf column contains the number of residues with at least one atom in alternate conformation and the Trace column contains the number of residues modelled with at most 2 atoms.

- Molecule 1 is a protein called Lactoperoxidase.

Mol	Chain	Residues	Atoms						ZeroOcc	AltConf	Trace
1	A	595	Total	C	N	O	P	S	0	0	0
			4774	3037	847	863	1	26			

- Molecule 2 is PROTOPORPHYRIN IX CONTAINING FE (three-letter code: HEM) (formula: $C_{34}H_{32}FeN_4O_4$).



Mol	Chain	Residues	Atoms					ZeroOcc	AltConf
2	A	1	Total	C	Fe	N	O	0	0
			43	34	1	4	4		

- Molecule 3 is CALCIUM ION (three-letter code: CA) (formula: Ca).

Mol	Chain	Residues	Atoms		ZeroOcc	AltConf
3	A	1	Total	Ca	0	0
			1	1		

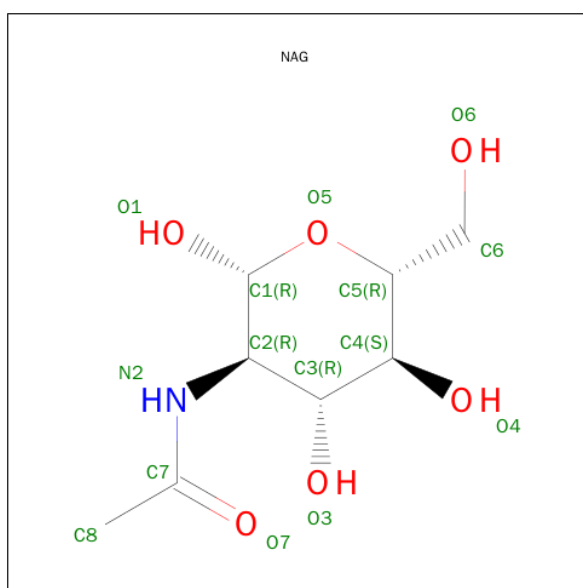
- Molecule 4 is IODIDE ION (three-letter code: IOD) (formula: I).

Mol	Chain	Residues	Atoms	ZeroOcc	AltConf
4	A	11	Total I 11 11	0	0

- Molecule 5 is a polymer of unknown type called SUGAR (2-MER).

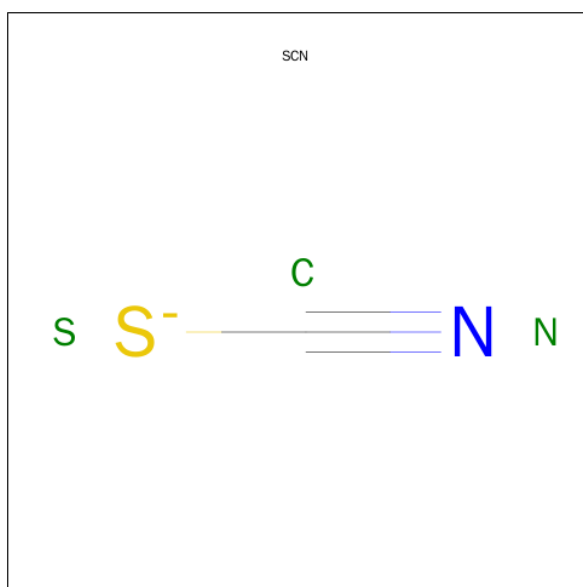
Mol	Chain	Residues	Atoms	ZeroOcc	AltConf
5	A	2	Total C N O 28 16 2 10	0	0

- Molecule 6 is SUGAR (N-ACETYL-D-GLUCOSAMINE) (three-letter code: NAG) (formula: $C_8H_{15}NO_6$).



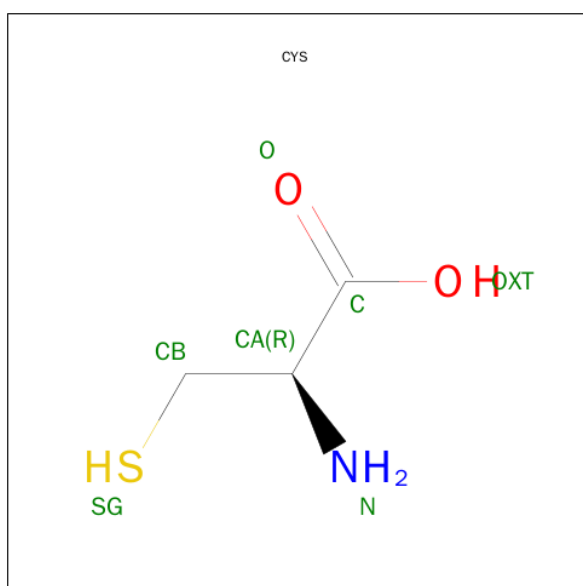
Mol	Chain	Residues	Atoms	ZeroOcc	AltConf
6	A	1	Total C N O 14 8 1 5	0	0
6	A	1	Total C N O 14 8 1 5	0	0
6	A	1	Total C N O 14 8 1 5	0	0

- Molecule 7 is THIOCYANATE ION (three-letter code: SCN) (formula: CNS).



Mol	Chain	Residues	Atoms				ZeroOcc	AltConf
7	A	1	Total	C	N	S	0	0
			3	1	1	1		
7	A	1	Total	C	N	S	0	0
			3	1	1	1		

- Molecule 8 is CYSTEINE (three-letter code: CYS) (formula: $C_3H_7NO_2S$).



Mol	Chain	Residues	Atoms					ZeroOcc	AltConf
8	A	1	Total	C	N	O	S	0	0
			7	3	1	2	1		

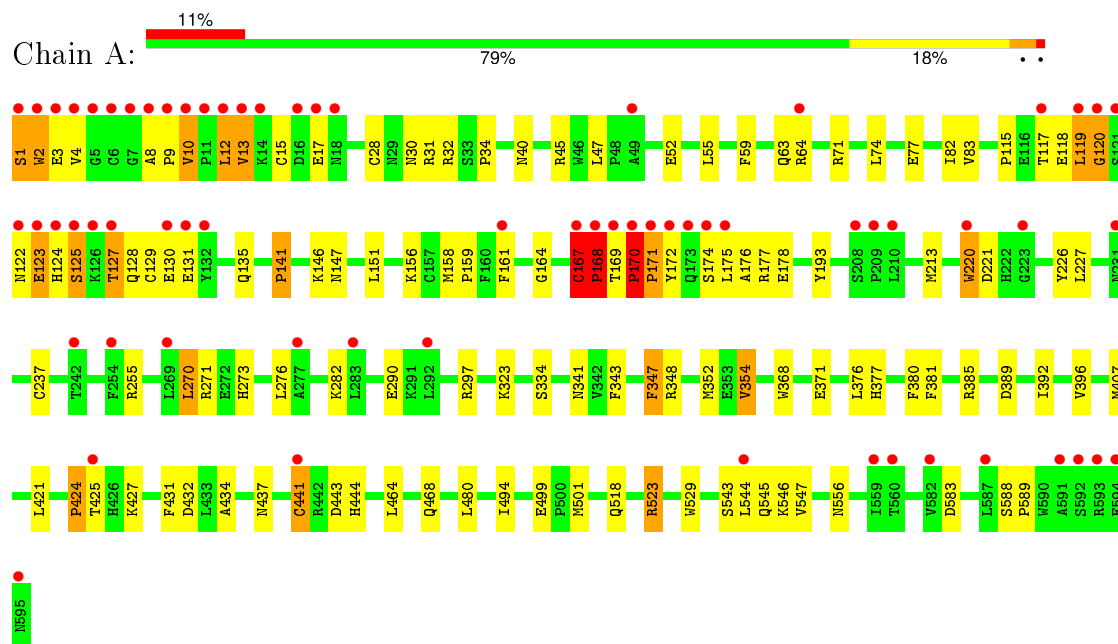
- Molecule 9 is water.

Mol	Chain	Residues	Atoms		ZeroOcc	AltConf
9	A	297	Total 297	O 297	0	0

3 Residue-property plots [i](#)

These plots are drawn for all protein, RNA and DNA chains in the entry. The first graphic for a chain summarises the proportions of errors displayed in the second graphic. The second graphic shows the sequence view annotated by issues in geometry and electron density. Residues are color-coded according to the number of geometric quality criteria for which they contain at least one outlier: green = 0, yellow = 1, orange = 2 and red = 3 or more. A red dot above a residue indicates a poor fit to the electron density ($\text{RSRZ} > 2$). Stretches of 2 or more consecutive residues without any outlier are shown as a green connector. Residues present in the sample, but not in the model, are shown in grey.

• Molecule 1: Lactoperoxidase



4 Data and refinement statistics

Property	Value	Source
Space group	P 1 21 1	Depositor
Cell constants a, b, c, α , β , γ	54.01Å 80.30Å 76.51Å 90.00° 102.02° 90.00°	Depositor
Resolution (Å)	74.83 – 1.98 74.83 – 1.98	Depositor EDS
% Data completeness (in resolution range)	96.7 (74.83-1.98) 96.7 (74.83-1.98)	Depositor EDS
R_{merge}	(Not available)	Depositor
R_{sym}	(Not available)	Depositor
$\langle I/\sigma(I) \rangle$ ¹	2.02 (at 1.98Å)	Xtriage
Refinement program	REFMAC 5.5.0109	Depositor
R, R_{free}	0.217 , 0.252 0.234 , 0.281	Depositor DCC
R_{free} test set	2188 reflections (5.34%)	DCC
Wilson B-factor (Å ²)	35.2	Xtriage
Anisotropy	0.416	Xtriage
Bulk solvent k_{sol} (e/Å ³), B_{sol} (Å ²)	0.37 , 54.4	EDS
Estimated twinning fraction	No twinning to report.	Xtriage
L-test for twinning ²	$\langle L \rangle = 0.48$, $\langle L^2 \rangle = 0.31$	Xtriage
Outliers	3 of 43198 reflections (0.007%)	Xtriage
F_o, F_c correlation	0.93	EDS
Total number of atoms	5209	wwPDB-VP
Average B, all atoms (Å ²)	40.0	wwPDB-VP

Xtriage's analysis on translational NCS is as follows: *The largest off-origin peak in the Patterson function is 6.13% of the height of the origin peak. No significant pseudotranslation is detected.*

¹Intensities estimated from amplitudes.

²Theoretical values of $\langle |L| \rangle$, $\langle L^2 \rangle$ for acentric reflections are 0.5, 0.375 respectively for untwinned datasets, and 0.333, 0.2 for perfectly twinned datasets.

5 Model quality [i](#)

5.1 Standard geometry [i](#)

Bond lengths and bond angles in the following residue types are not validated in this section: SCN, NAG, SEP, CA, HEM, IOD

The Z score for a bond length (or angle) is the number of standard deviations the observed value is removed from the expected value. A bond length (or angle) with $|Z| > 5$ is considered an outlier worth inspection. RMSZ is the root-mean-square of all Z scores of the bond lengths (or angles).

Mol	Chain	Bond lengths		Bond angles	
		RMSZ	$\# Z > 5$	RMSZ	$\# Z > 5$
1	A	1.08	10/4891 (0.2%)	1.03	19/6634 (0.3%)

Chiral center outliers are detected by calculating the chiral volume of a chiral center and verifying if the center is modelled as a planar moiety or with the opposite hand. A planarity outlier is detected by checking planarity of atoms in a peptide group, atoms in a mainchain group or atoms of a sidechain that are expected to be planar.

Mol	Chain	#Chirality outliers	#Planarity outliers
1	A	0	2

The worst 5 of 10 bond length outliers are listed below:

Mol	Chain	Res	Type	Atoms	Z	Observed(Å)	Ideal(Å)
1	A	434	ALA	CA-CB	6.75	1.66	1.52
1	A	499	GLU	CD-OE2	-6.40	1.18	1.25
1	A	178	GLU	CB-CG	6.10	1.63	1.52
1	A	59	PHE	CD2-CE2	5.85	1.50	1.39
1	A	167	CYS	N-CA	5.84	1.58	1.46

The worst 5 of 19 bond angle outliers are listed below:

Mol	Chain	Res	Type	Atoms	Z	Observed(°)	Ideal(°)
1	A	170	PRO	C-N-CD	-12.26	93.64	120.60
1	A	168	PRO	N-CA-C	10.66	139.81	112.10
1	A	125	SER	CA-C-N	-9.03	97.33	117.20
1	A	168	PRO	CA-C-N	-7.66	100.36	117.20
1	A	169	THR	N-CA-C	6.73	129.16	111.00

There are no chirality outliers.

All (2) planarity outliers are listed below:

Mol	Chain	Res	Type	Group
1	A	1	SER	Peptide
1	A	167	CYS	Peptide

5.2 Too-close contacts ⓘ

In the following table, the Non-H and H(model) columns list the number of non-hydrogen atoms and hydrogen atoms in the chain respectively. The H(added) column lists the number of hydrogen atoms added and optimized by MolProbity. The Clashes column lists the number of clashes within the asymmetric unit, whereas Symm-Clashes lists symmetry related clashes.

Mol	Chain	Non-H	H(model)	H(added)	Clashes	Symm-Clashes
1	A	4774	0	4685	90	0
2	A	43	0	30	4	0
3	A	1	0	0	0	0
4	A	11	0	0	1	0
5	A	28	0	25	0	0
6	A	42	0	39	0	0
7	A	6	0	0	0	0
8	A	7	0	4	4	0
9	A	297	0	0	0	0
All	All	5209	0	4783	93	0

The all-atom clashscore is defined as the number of clashes found per 1000 atoms (including hydrogen atoms). The all-atom clashscore for this structure is 10.

The worst 5 of 93 close contacts within the same asymmetric unit are listed below, sorted by their clash magnitude.

Atom-1	Atom-2	Interatomic distance (Å)	Clash overlap (Å)
1:A:170:PRO:HB2	1:A:171:PRO:CD	1.73	1.18
1:A:170:PRO:HB2	1:A:171:PRO:HD2	1.39	1.00
1:A:170:PRO:HB2	1:A:171:PRO:HD3	1.41	0.99
1:A:115:PRO:HG3	1:A:119:LEU:HD13	1.45	0.98
1:A:130:GLU:HA	1:A:159:PRO:HG3	1.58	0.85

There are no symmetry-related clashes.

5.3 Torsion angles [i](#)

5.3.1 Protein backbone [i](#)

In the following table, the Percentiles column shows the percent Ramachandran outliers of the chain as a percentile score with respect to all X-ray entries followed by that with respect to entries of similar resolution.

The Analysed column shows the number of residues for which the backbone conformation was analysed, and the total number of residues.

Mol	Chain	Analysed	Favoured	Allowed	Outliers	Percentiles	
1	A	592/595 (100%)	558 (94%)	28 (5%)	6 (1%)	19	10

5 of 6 Ramachandran outliers are listed below:

Mol	Chain	Res	Type
1	A	120	GLY
1	A	168	PRO
1	A	171	PRO
1	A	123	GLU
1	A	170	PRO

5.3.2 Protein sidechains [i](#)

In the following table, the Percentiles column shows the percent sidechain outliers of the chain as a percentile score with respect to all X-ray entries followed by that with respect to entries of similar resolution.

The Analysed column shows the number of residues for which the sidechain conformation was analysed, and the total number of residues.

Mol	Chain	Analysed	Rotameric	Outliers	Percentiles	
1	A	517/517 (100%)	498 (96%)	19 (4%)	41	35

5 of 19 residues with a non-rotameric sidechain are listed below:

Mol	Chain	Res	Type
1	A	125	SER
1	A	141	PRO
1	A	334	SER
1	A	124	HIS
1	A	347	PHE

Some sidechains can be flipped to improve hydrogen bonding and reduce clashes. 5 of 6 such

sidechains are listed below:

Mol	Chain	Res	Type
1	A	437	ASN
1	A	568	GLN
1	A	468	GLN
1	A	40	ASN
1	A	497	ASN

5.3.3 RNA ⓘ

There are no RNA molecules in this entry.

5.4 Non-standard residues in protein, DNA, RNA chains ⓘ

1 non-standard protein/DNA/RNA residue is modelled in this entry.

In the following table, the Counts columns list the number of bonds (or angles) for which Mogul statistics could be retrieved, the number of bonds (or angles) that are observed in the model and the number of bonds (or angles) that are defined in the chemical component dictionary. The Link column lists molecule types, if any, to which the group is linked. The Z score for a bond length (or angle) is the number of standard deviations the observed value is removed from the expected value. A bond length (or angle) with $|Z| > 2$ is considered an outlier worth inspection. RMSZ is the root-mean-square of all Z scores of the bond lengths (or angles).

Mol	Type	Chain	Res	Link	Bond lengths			Bond angles		
					Counts	RMSZ	$\# Z > 2$	Counts	RMSZ	$\# Z > 2$
1	SEP	A	198	1	8,9,10	1.46	2 (25%)	8,12,14	3.73	5 (62%)

In the following table, the Chirals column lists the number of chiral outliers, the number of chiral centers analysed, the number of these observed in the model and the number defined in the chemical component dictionary. Similar counts are reported in the Torsion and Rings columns. '-' means no outliers of that kind were identified.

Mol	Type	Chain	Res	Link	Chirals	Torsions	Rings
1	SEP	A	198	1	-	0/6/8/10	0/0/0/0

All (2) bond length outliers are listed below:

Mol	Chain	Res	Type	Atoms	Z	Observed(Å)	Ideal(Å)
1	A	198	SEP	CA-N	-2.55	1.39	1.47
1	A	198	SEP	P-O2P	-2.09	1.47	1.54

All (5) bond angle outliers are listed below:

Mol	Chain	Res	Type	Atoms	Z	Observed(°)	Ideal(°)
1	A	198	SEP	OG-P-O1P	-6.09	91.63	107.14
1	A	198	SEP	O2P-P-O1P	-2.83	101.46	110.58
1	A	198	SEP	OG-CB-CA	2.14	110.10	108.27
1	A	198	SEP	O3P-P-OG	4.34	119.05	106.56
1	A	198	SEP	O2P-P-OG	6.19	124.39	106.56

There are no chirality outliers.

There are no torsion outliers.

There are no ring outliers.

No monomer is involved in short contacts.

5.5 Carbohydrates

2 carbohydrates are modelled in this entry.

In the following table, the Counts columns list the number of bonds (or angles) for which Mogul statistics could be retrieved, the number of bonds (or angles) that are observed in the model and the number of bonds (or angles) that are defined in the chemical component dictionary. The Link column lists molecule types, if any, to which the group is linked. The Z score for a bond length (or angle) is the number of standard deviations the observed value is removed from the expected value. A bond length (or angle) with $|Z| > 2$ is considered an outlier worth inspection. RMSZ is the root-mean-square of all Z scores of the bond lengths (or angles).

Mol	Type	Chain	Res	Link	Bond lengths			Bond angles		
					Counts	RMSZ	$\# Z > 2$	Counts	RMSZ	$\# Z > 2$
5	NAG	A	614	1,5	14,14,15	0.99	0	15,19,21	1.61	6 (40%)
5	NAG	A	615	5	14,14,15	0.53	0	15,19,21	2.78	6 (40%)

In the following table, the Chirals column lists the number of chiral outliers, the number of chiral centers analysed, the number of these observed in the model and the number defined in the chemical component dictionary. Similar counts are reported in the Torsion and Rings columns. '-' means no outliers of that kind were identified.

Mol	Type	Chain	Res	Link	Chirals	Torsions	Rings
5	NAG	A	614	1,5	-	0/6/23/26	0/1/1/1
5	NAG	A	615	5	-	0/6/23/26	0/1/1/1

There are no bond length outliers.

The worst 5 of 12 bond angle outliers are listed below:

Mol	Chain	Res	Type	Atoms	Z	Observed(°)	Ideal(°)
5	A	615	NAG	C3-C2-N2	-3.33	102.58	110.56
5	A	614	NAG	O4-C4-C3	-2.40	104.93	110.34
5	A	614	NAG	O7-C7-C8	-2.28	117.88	122.06
5	A	615	NAG	C6-C5-C4	-2.10	107.82	113.02
5	A	614	NAG	O7-C7-N2	2.06	126.07	121.86

There are no chirality outliers.

There are no torsion outliers.

There are no ring outliers.

No monomer is involved in short contacts.

5.6 Ligand geometry [i](#)

Of 19 ligands modelled in this entry, 12 are monoatomic - leaving 7 for Mogul analysis.

In the following table, the Counts columns list the number of bonds (or angles) for which Mogul statistics could be retrieved, the number of bonds (or angles) that are observed in the model and the number of bonds (or angles) that are defined in the chemical component dictionary. The Link column lists molecule types, if any, to which the group is linked. The Z score for a bond length (or angle) is the number of standard deviations the observed value is removed from the expected value. A bond length (or angle) with $|Z| > 2$ is considered an outlier worth inspection. RMSZ is the root-mean-square of all Z scores of the bond lengths (or angles).

Mol	Type	Chain	Res	Link	Bond lengths			Bond angles		
					Counts	RMSZ	$\# Z > 2$	Counts	RMSZ	$\# Z > 2$
2	HEM	A	601	9,1	30,50,50	2.64	12 (40%)	24,82,82	2.38	10 (41%)
6	NAG	A	616	1	14,14,15	0.52	0	15,19,21	1.19	2 (13%)
6	NAG	A	617	1	14,14,15	0.61	0	15,19,21	1.12	1 (6%)
6	NAG	A	618	1	14,14,15	0.61	0	15,19,21	1.15	0
7	SCN	A	619	-	2,2,2	2.08	1 (50%)	1,1,1	0.03	0
8	CYS	A	620	-	3,6,6	3.42	2 (66%)	1,7,7	0.41	0
7	SCN	A	621	-	2,2,2	1.92	1 (50%)	1,1,1	0.82	0

In the following table, the Chirals column lists the number of chiral outliers, the number of chiral centers analysed, the number of these observed in the model and the number defined in the chemical component dictionary. Similar counts are reported in the Torsion and Rings columns. '-' means no outliers of that kind were identified.

Mol	Type	Chain	Res	Link	Chirals	Torsions	Rings
2	HEM	A	601	9,1	-	0/10/54/54	0/0/8/8

Continued on next page...

Continued from previous page...

Mol	Type	Chain	Res	Link	Chirals	Torsions	Rings
6	NAG	A	616	1	-	0/6/23/26	0/1/1/1
6	NAG	A	617	1	-	0/6/23/26	0/1/1/1
6	NAG	A	618	1	-	0/6/23/26	0/1/1/1
7	SCN	A	619	-	-	0/0/0/0	0/0/0/0
8	CYS	A	620	-	-	0/2/6/6	0/0/0/0
7	SCN	A	621	-	-	0/0/0/0	0/0/0/0

The worst 5 of 16 bond length outliers are listed below:

Mol	Chain	Res	Type	Atoms	Z	Observed(Å)	Ideal(Å)
2	A	601	HEM	C3B-C4B	-9.09	1.43	1.51
8	A	620	CYS	CB-SG	-5.21	1.69	1.81
2	A	601	HEM	C2C-C1C	-4.05	1.44	1.52
2	A	601	HEM	C2D-C1D	-3.49	1.40	1.51
2	A	601	HEM	C3D-C4D	-3.23	1.47	1.51

The worst 5 of 13 bond angle outliers are listed below:

Mol	Chain	Res	Type	Atoms	Z	Observed(°)	Ideal(°)
2	A	601	HEM	CBD-CAD-C3D	-2.94	104.99	113.55
6	A	616	NAG	C3-C4-C5	-2.72	105.46	110.20
2	A	601	HEM	C3B-C4B-NB	-2.53	106.80	111.63
2	A	601	HEM	CAD-CBD-CGD	-2.24	103.87	113.02
2	A	601	HEM	CAA-C2A-C3A	-2.11	122.99	129.00

There are no chirality outliers.

There are no torsion outliers.

There are no ring outliers.

2 monomers are involved in 6 short contacts:

Mol	Chain	Res	Type	Clashes	Symm-Clashes
2	A	601	HEM	4	0
8	A	620	CYS	4	0

5.7 Other polymers

There are no such residues in this entry.

5.8 Polymer linkage issues ⓘ

There are no chain breaks in this entry.

6 Fit of model and data

6.1 Protein, DNA and RNA chains

In the following table, the column labelled ‘#RSRZ> 2’ contains the number (and percentage) of RSRZ outliers, followed by percent RSRZ outliers for the chain as percentile scores relative to all X-ray entries and entries of similar resolution. The OWAB column contains the minimum, median, 95th percentile and maximum values of the occupancy-weighted average B-factor per residue. The column labelled ‘Q< 0.9’ lists the number of (and percentage) of residues with an average occupancy less than 0.9.

Mol	Chain	Analysed	<RSRZ>	#RSRZ>2	OWAB(Å ²)	Q<0.9
1	A	594/595 (99%)	1.08	66 (11%) 7 9	20, 37, 79, 109	0

The worst 5 of 66 RSRZ outliers are listed below:

Mol	Chain	Res	Type	RSRZ
1	A	2	TRP	16.1
1	A	121	SER	13.3
1	A	124	HIS	12.3
1	A	10	VAL	11.8
1	A	594	GLU	10.5

6.2 Non-standard residues in protein, DNA, RNA chains

In the following table, the Atoms column lists the number of modelled atoms in the group and the number defined in the chemical component dictionary. LLDF column lists the quality of electron density of the group with respect to its neighbouring residues in protein, DNA or RNA chains. The B-factors column lists the minimum, median, 95th percentile and maximum values of B factors of atoms in the group. The column labelled ‘Q< 0.9’ lists the number of atoms with occupancy less than 0.9.

Mol	Type	Chain	Res	Atoms	RSCC	RSR	LLDF	B-factors(Å ²)	Q<0.9
1	SEP	A	198	10/11	0.94	0.18	-	27,41,44,48	0

6.3 Carbohydrates

In the following table, the Atoms column lists the number of modelled atoms in the group and the number defined in the chemical component dictionary. LLDF column lists the quality of electron density of the group with respect to its neighbouring residues in protein, DNA or RNA chains. The B-factors column lists the minimum, median, 95th percentile and maximum values of B factors of atoms in the group. The column labelled ‘Q< 0.9’ lists the number of atoms with occupancy less than 0.9.

Mol	Type	Chain	Res	Atoms	RSCC	RSR	LLDF	B-factors(\AA^2)	Q<0.9
5	NAG	A	614	14/15	0.88	0.16	0.42	24,29,38,38	0
5	NAG	A	615	14/15	0.75	0.26	-	51,59,62,63	0

6.4 Ligands [i](#)

In the following table, the Atoms column lists the number of modelled atoms in the group and the number defined in the chemical component dictionary. LLDF column lists the quality of electron density of the group with respect to its neighbouring residues in protein, DNA or RNA chains. The B-factors column lists the minimum, median, 95th percentile and maximum values of B factors of atoms in the group. The column labelled 'Q< 0.9' lists the number of atoms with occupancy less than 0.9.

Mol	Type	Chain	Res	Atoms	RSCC	RSR	LLDF	B-factors(\AA^2)	Q<0.9
8	CYS	A	620	7/7	0.89	0.28	12.19	22,36,38,40	0
6	NAG	A	618	14/15	0.85	0.28	2.20	40,45,54,55	0
7	SCN	A	621	3/3	0.94	0.21	1.79	48,48,49,49	0
4	IOD	A	606	1/1	1.00	0.15	-0.11	19,19,19,19	0
6	NAG	A	616	14/15	0.90	0.15	-0.65	22,30,36,39	0
7	SCN	A	619	3/3	0.94	0.14	-0.75	9,9,12,14	0
2	HEM	A	601	43/43	0.96	0.12	-1.54	10,15,22,24	0
4	IOD	A	608	1/1	0.96	0.09	-1.85	37,37,37,37	0
3	CA	A	602	1/1	0.99	0.08	-3.14	17,17,17,17	0
4	IOD	A	604	1/1	0.98	0.03	-3.91	42,42,42,42	0
4	IOD	A	603	1/1	0.99	0.04	-4.62	34,34,34,34	0
4	IOD	A	605	1/1	0.98	0.04	-5.05	31,31,31,31	0
4	IOD	A	607	1/1	0.98	0.06	-5.83	27,27,27,27	0
4	IOD	A	610	1/1	0.94	0.07	-	70,70,70,70	0
4	IOD	A	609	1/1	0.94	0.04	-	47,47,47,47	0
6	NAG	A	617	14/15	0.80	0.22	-	39,44,46,47	0
4	IOD	A	612	1/1	0.89	0.14	-	62,62,62,62	0
4	IOD	A	611	1/1	0.97	0.12	-	45,45,45,45	0
4	IOD	A	613	1/1	0.96	0.09	-	68,68,68,68	0

6.5 Other polymers [i](#)

There are no such residues in this entry.