



Full wwPDB X-ray Structure Validation Report ⓘ

Jan 31, 2016 – 08:33 PM GMT

PDB ID : 1KV2
Title : Human p38 MAP Kinase in Complex with BIRB 796
Authors : Pargellis, C.; Tong, L.; Churchill, L.; Cirillo, P.F.; Gilmore, T.; Graham, A.G.; Grob, P.M.; Hickey, E.R.; Moss, N.; Pav, S.; Regan, J.
Deposited on : 2002-01-23
Resolution : 2.80 Å(reported)

This is a Full wwPDB X-ray Structure Validation Report for a publicly released PDB entry.
We welcome your comments at validation@mail.wwpdb.org
A user guide is available at
<http://wwpdb.org/validation/2016/XrayValidationReportHelp>
with specific help available everywhere you see the ⓘ symbol.

The following versions of software and data (see [references ⓘ](#)) were used in the production of this report:

MolProbity : 4.02b-467
Mogul : 1.7 (RC4), CSD as536be (2015)
Xtriage (Phenix) : **NOT EXECUTED**
EDS : **NOT EXECUTED**
Percentile statistics : 20151230.v01 (using entries in the PDB archive December 30th 2015)
Ideal geometry (proteins) : Engh & Huber (2001)
Ideal geometry (DNA, RNA) : Parkinson et al. (1996)
Validation Pipeline (wwPDB-VP) : trunk26865

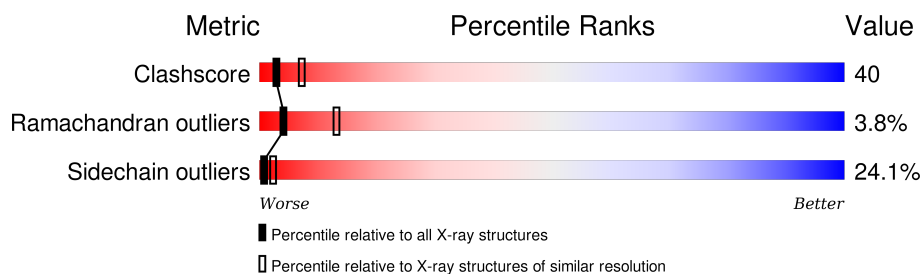
1 Overall quality at a glance

The following experimental techniques were used to determine the structure:

X-RAY DIFFRACTION

The reported resolution of this entry is 2.80 Å.

Percentile scores (ranging between 0-100) for global validation metrics of the entry are shown in the following graphic. The table shows the number of entries on which the scores are based.



Metric	Whole archive (#Entries)	Similar resolution (#Entries, resolution range(Å))
Clashscore	102246	2827 (2.80-2.80)
Ramachandran outliers	100387	2782 (2.80-2.80)
Sidechain outliers	100360	2784 (2.80-2.80)

The table below summarises the geometric issues observed across the polymeric chains and their fit to the electron density. The red, orange, yellow and green segments on the lower bar indicate the fraction of residues that contain outliers for ≥ 3 , 2, 1 and 0 types of geometric quality criteria. A grey segment represents the fraction of residues that are not modelled. The numeric value for each fraction is indicated below the corresponding segment, with a dot representing fractions $\leq 5\%$. The upper red bar (where present) indicates the fraction of residues that have poor fit to the electron density. The numeric value is given above the bar.

Note EDS was not executed.

Mol	Chain	Length	Quality of chain
1	A	360	

2 Entry composition [i](#)

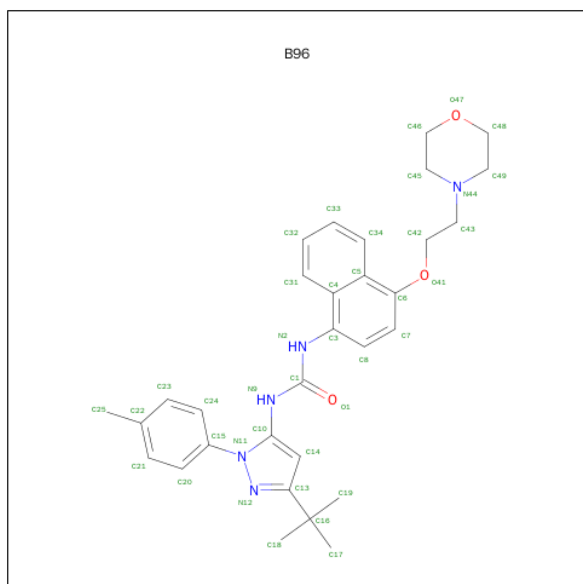
There are 2 unique types of molecules in this entry. The entry contains 2656 atoms, of which 0 are hydrogens and 0 are deuteriums.

In the tables below, the ZeroOcc column contains the number of atoms modelled with zero occupancy, the AltConf column contains the number of residues with at least one atom in alternate conformation and the Trace column contains the number of residues modelled with at most 2 atoms.

- Molecule 1 is a protein called p38 MAP kinase.

Mol	Chain	Residues	Atoms					ZeroOcc	AltConf	Trace
			Total	C	N	O	S			
1	A	325	2617	1679	446	481	11	0	0	0

- Molecule 2 is 1-(5-TERT-BUTYL-2-P-TOLYL-2H-PYRAZOL-3-YL)-3-[4-(2-MORPHOLIN-4-YL-ETHOXY)-NAPHTHALEN-1-YL]-UREA (three-letter code: B96) (formula: C₃₁H₃₇N₅O₃).



Mol	Chain	Residues	Atoms				ZeroOcc	AltConf
			Total	C	N	O		
2	A	1	39	31	5	3	0	0

Note EDS was not executed.

- Molecule 1: p38 MAP kinase



4 Data and refinement statistics

Xtriage (Phenix) and EDS were not executed - this section will therefore be incomplete.

Property	Value	Source
Space group	P 21 21 21	Depositor
Cell constants a, b, c, α , β , γ	64.00 Å 74.00 Å 76.80 Å 90.00° 90.00° 90.00°	Depositor
Resolution (Å)	20.00 – 2.80	Depositor
% Data completeness (in resolution range)	(Not available) (20.00-2.80)	Depositor
R_{merge}	(Not available)	Depositor
R_{sym}	(Not available)	Depositor
Refinement program	CNS	Depositor
R, R_{free}	0.228 , 0.318	Depositor
Estimated twinning fraction	No twinning to report.	Xtriage
Total number of atoms	2656	wwPDB-VP
Average B, all atoms (Å ²)	32.0	wwPDB-VP

5 Model quality [i](#)

5.1 Standard geometry [i](#)

Bond lengths and bond angles in the following residue types are not validated in this section: B96

The Z score for a bond length (or angle) is the number of standard deviations the observed value is removed from the expected value. A bond length (or angle) with $|Z| > 5$ is considered an outlier worth inspection. RMSZ is the root-mean-square of all Z scores of the bond lengths (or angles).

Mol	Chain	Bond lengths		Bond angles	
		RMSZ	$\# Z > 5$	RMSZ	$\# Z > 5$
1	A	0.55	0/2678	0.73	0/3637

There are no bond length outliers.

There are no bond angle outliers.

There are no chirality outliers.

There are no planarity outliers.

5.2 Too-close contacts [i](#)

In the following table, the Non-H and H(model) columns list the number of non-hydrogen atoms and hydrogen atoms in the chain respectively. The H(added) column lists the number of hydrogen atoms added and optimized by MolProbity. The Clashes column lists the number of clashes within the asymmetric unit, whereas Symm-Clashes lists symmetry related clashes.

Mol	Chain	Non-H	H(model)	H(added)	Clashes	Symm-Clashes
1	A	2617	0	2598	209	0
2	A	39	0	37	6	0
All	All	2656	0	2635	209	0

The all-atom clashscore is defined as the number of clashes found per 1000 atoms (including hydrogen atoms). The all-atom clashscore for this structure is 40.

All (209) close contacts within the same asymmetric unit are listed below, sorted by their clash magnitude.

Atom-1	Atom-2	Interatomic distance (Å)	Clash overlap (Å)
1:A:275:ILE:HD12	1:A:275:ILE:H	1.27	0.99
1:A:229:ILE:HG23	1:A:258:TYR:OH	1.70	0.92

Continued on next page...

Continued from previous page...

Atom-1	Atom-2	Interatomic distance (Å)	Clash overlap (Å)
1:A:275:ILE:HD12	1:A:275:ILE:N	1.84	0.91
1:A:233:LYS:NZ	1:A:237:ARG:HH11	1.67	0.91
1:A:141:ILE:HG13	1:A:142:HIS:N	1.83	0.90
1:A:197:TRP:HD1	1:A:198:MET:H	1.21	0.89
1:A:148:HIS:HE1	1:A:167:LEU:O	1.53	0.88
1:A:235:ILE:O	1:A:239:VAL:HG22	1.75	0.87
1:A:197:TRP:HE1	1:A:199:HIS:CE1	1.91	0.87
1:A:93:ALA:HB1	1:A:98:GLU:HB3	1.60	0.84
1:A:258:TYR:CE2	1:A:262:LEU:HD11	2.15	0.81
1:A:193:ILE:HD11	1:A:204:VAL:HG11	1.63	0.80
1:A:62:ILE:HG13	1:A:334:ILE:HG13	1.65	0.79
1:A:148:HIS:HD2	1:A:150:ASP:H	1.31	0.78
1:A:73:ARG:NH2	1:A:324:ASP:O	2.16	0.78
1:A:84:ILE:HG22	1:A:166:ILE:O	1.83	0.77
1:A:233:LYS:NZ	1:A:237:ARG:NH1	2.33	0.76
1:A:193:ILE:HG12	1:A:200:TYR:CD1	2.20	0.76
1:A:36:GLY:O	1:A:37:SER:HB2	1.83	0.76
1:A:155:ASN:ND2	1:A:169:PHE:H	1.82	0.76
1:A:197:TRP:NE1	1:A:199:HIS:ND1	2.34	0.75
1:A:281:ALA:HB2	1:A:307:TYR:CE1	2.21	0.75
1:A:258:TYR:HE2	1:A:262:LEU:HD11	1.54	0.73
1:A:112:ASP:C	1:A:114:ASN:H	1.93	0.72
1:A:43:ASP:HB3	1:A:48:LEU:HD12	1.70	0.72
1:A:137:GLY:O	1:A:141:ILE:HG23	1.90	0.71
1:A:152:LYS:HZ3	1:A:185:THR:N	1.87	0.71
1:A:233:LYS:HZ1	1:A:237:ARG:NH1	1.89	0.70
1:A:66:LYS:HG3	1:A:337:TRP:CZ2	2.27	0.70
1:A:95:SER:OG	1:A:97:GLU:HG3	1.91	0.70
1:A:233:LYS:HZ1	1:A:237:ARG:HH11	1.37	0.70
1:A:193:ILE:HD11	1:A:204:VAL:CG1	2.22	0.69
1:A:74:LEU:HD21	1:A:146:ILE:HD13	1.75	0.69
1:A:257:ASN:O	1:A:261:SER:HB2	1.92	0.69
1:A:148:HIS:CE1	1:A:167:LEU:O	2.43	0.68
1:A:332:LEU:HB3	1:A:336:GLU:OE1	1.93	0.68
1:A:158:VAL:HG22	1:A:164:LEU:HB2	1.76	0.66
1:A:69:TYR:CZ	1:A:73:ARG:HD3	2.31	0.65
1:A:253:GLU:O	1:A:257:ASN:HB2	1.96	0.65
1:A:167:LEU:HA	2:A:391:B96:H172	1.78	0.65
1:A:239:VAL:HG21	1:A:291:LEU:CD1	2.26	0.65
1:A:72:LEU:HD13	1:A:344:GLU:CB	2.26	0.64
1:A:312:HIS:CE1	1:A:317:GLU:OE2	2.51	0.64

Continued on next page...

Continued from previous page...

Atom-1	Atom-2	Interatomic distance (Å)	Clash overlap (Å)
1:A:123:THR:HG22	1:A:125:ASP:H	1.64	0.63
1:A:197:TRP:HD1	1:A:198:MET:N	1.93	0.63
1:A:32:SER:HA	1:A:37:SER:HA	1.80	0.63
1:A:58:PRO:HG2	1:A:101:ASP:HA	1.80	0.63
1:A:80:HIS:CD2	1:A:82:ASN:H	2.16	0.63
1:A:82:ASN:OD1	1:A:136:ARG:HD3	1.98	0.62
1:A:269:ASN:HD22	1:A:272:ASN:HD21	1.46	0.62
1:A:123:THR:HB	1:A:126:HIS:ND1	2.15	0.62
1:A:66:LYS:HG3	1:A:337:TRP:CE2	2.35	0.62
1:A:233:LYS:HZ2	1:A:237:ARG:HH11	1.45	0.62
1:A:197:TRP:CD1	1:A:198:MET:N	2.66	0.62
1:A:275:ILE:N	1:A:275:ILE:CD1	2.55	0.62
1:A:229:ILE:HG13	1:A:258:TYR:CE1	2.35	0.62
1:A:253:GLU:HA	1:A:256:ARG:NH2	2.14	0.61
1:A:7:THR:HB	1:A:22:GLU:CG	2.30	0.61
1:A:185:THR:HG22	1:A:186:ARG:H	1.66	0.61
1:A:288:MET:O	1:A:296:ARG:HD2	2.01	0.61
1:A:239:VAL:HG21	1:A:291:LEU:HD11	1.81	0.61
1:A:140:TYR:CE1	1:A:320:ALA:HB2	2.37	0.60
1:A:292:ASP:OD1	1:A:294:ASP:HB2	2.01	0.60
1:A:141:ILE:HD12	1:A:146:ILE:HG22	1.84	0.59
1:A:152:LYS:HD2	1:A:154:SER:OG	2.01	0.59
1:A:269:ASN:CB	1:A:272:ASN:ND2	2.65	0.59
1:A:155:ASN:HD21	1:A:169:PHE:H	1.49	0.59
1:A:42:PHE:CE1	1:A:47:GLY:O	2.55	0.59
1:A:269:ASN:HB2	1:A:272:ASN:ND2	2.18	0.59
1:A:224:PRO:HD2	1:A:234:LEU:HD13	1.84	0.58
1:A:242:PRO:HG2	1:A:259:ILE:HG21	1.86	0.58
1:A:36:GLY:O	1:A:37:SER:CB	2.51	0.58
1:A:294:ASP:O	1:A:295:LYS:HD3	2.04	0.57
1:A:223:PHE:HB2	1:A:231:GLN:HE22	1.70	0.57
1:A:57:ARG:O	1:A:64:HIS:HD2	1.88	0.57
1:A:49:ARG:HB3	1:A:108:LEU:HD23	1.86	0.57
1:A:127:VAL:HG22	1:A:307:TYR:OH	2.05	0.57
1:A:112:ASP:O	1:A:114:ASN:N	2.38	0.56
1:A:53:LYS:HD3	1:A:55:LEU:CD2	2.36	0.56
1:A:144:ALA:O	1:A:145:ASP:HB2	2.04	0.56
1:A:208:SER:O	1:A:212:ILE:HD12	2.06	0.56
1:A:126:HIS:O	1:A:130:LEU:HB2	2.05	0.55
1:A:195:LEU:HD12	1:A:196:ASN:N	2.21	0.55
1:A:69:TYR:OH	1:A:73:ARG:HD3	2.06	0.55

Continued on next page...

Continued from previous page...

Atom-1	Atom-2	Interatomic distance (Å)	Clash overlap (Å)
1:A:72:LEU:HD13	1:A:344:GLU:HB2	1.89	0.55
1:A:233:LYS:HZ2	1:A:237:ARG:NH1	2.03	0.54
1:A:11:GLN:O	1:A:18:TRP:N	2.40	0.54
1:A:237:ARG:HG2	1:A:268:MET:HE3	1.90	0.54
1:A:312:HIS:HE1	1:A:317:GLU:OE2	1.88	0.54
1:A:252:SER:OG	1:A:255:ALA:N	2.32	0.54
1:A:10:ARG:HG2	1:A:19:GLU:HG2	1.89	0.54
1:A:141:ILE:HD12	1:A:146:ILE:CG2	2.38	0.53
1:A:67:ARG:HG3	2:A:391:B96:C25	2.38	0.53
1:A:72:LEU:HD13	1:A:344:GLU:HB3	1.88	0.53
1:A:29:PRO:HA	1:A:39:CYS:SG	2.47	0.53
1:A:74:LEU:CD2	1:A:146:ILE:HD13	2.39	0.53
1:A:197:TRP:HE1	1:A:199:HIS:HD1	1.50	0.52
1:A:164:LEU:O	1:A:164:LEU:HD23	2.09	0.52
1:A:321:ASP:HB3	1:A:322:PRO:HD2	1.90	0.52
1:A:46:THR:OG1	1:A:48:LEU:HG	2.08	0.52
1:A:194:MET:CE	1:A:231:GLN:HG2	2.40	0.52
1:A:66:LYS:HE3	1:A:337:TRP:CZ2	2.45	0.52
1:A:46:THR:OG1	1:A:48:LEU:HD11	2.10	0.52
1:A:48:LEU:O	1:A:48:LEU:HD12	2.10	0.52
1:A:164:LEU:HD23	1:A:164:LEU:C	2.31	0.52
1:A:46:THR:OG1	1:A:48:LEU:CD1	2.57	0.52
1:A:246:LEU:O	1:A:249:LYS:HB2	2.10	0.51
1:A:21:PRO:HD3	1:A:90:PHE:CE1	2.46	0.51
1:A:124:ASP:O	1:A:128:GLN:HB2	2.11	0.51
1:A:49:ARG:HD3	1:A:108:LEU:HD23	1.92	0.51
1:A:201:ASN:ND2	1:A:203:THR:OG1	2.43	0.51
1:A:139:LYS:O	1:A:143:SER:HB3	2.11	0.51
1:A:141:ILE:CD1	1:A:146:ILE:HG22	2.41	0.50
1:A:94:ARG:O	1:A:95:SER:CB	2.58	0.50
1:A:236:LEU:CD2	1:A:291:LEU:HD21	2.42	0.50
1:A:7:THR:HB	1:A:22:GLU:HG2	1.94	0.50
1:A:13:LEU:N	1:A:16:THR:O	2.45	0.50
1:A:312:HIS:ND1	1:A:317:GLU:OE1	2.42	0.49
1:A:148:HIS:CD2	1:A:150:ASP:H	2.22	0.49
1:A:290:VAL:HG11	1:A:296:ARG:HA	1.94	0.49
1:A:95:SER:OG	1:A:97:GLU:CG	2.59	0.48
1:A:62:ILE:CG1	1:A:334:ILE:HG13	2.39	0.48
1:A:148:HIS:HD2	1:A:150:ASP:N	2.05	0.48
1:A:112:ASP:OD2	1:A:112:ASP:O	2.32	0.48
1:A:74:LEU:HD21	1:A:146:ILE:CD1	2.43	0.48

Continued on next page...

Continued from previous page...

Atom-1	Atom-2	Interatomic distance (Å)	Clash overlap (Å)
1:A:7:THR:HB	1:A:22:GLU:HG3	1.95	0.47
1:A:112:ASP:C	1:A:114:ASN:N	2.58	0.47
1:A:43:ASP:O	1:A:47:GLY:N	2.45	0.47
1:A:239:VAL:HG21	1:A:291:LEU:HD13	1.96	0.47
1:A:127:VAL:CG2	1:A:307:TYR:OH	2.63	0.47
1:A:269:ASN:O	1:A:272:ASN:N	2.48	0.47
1:A:9:TYR:O	1:A:19:GLU:HA	2.14	0.47
1:A:88:ASP:OD2	1:A:89:VAL:N	2.44	0.47
1:A:25:GLN:O	1:A:26:ASN:C	2.53	0.46
1:A:290:VAL:HG13	1:A:296:ARG:HD3	1.98	0.46
1:A:191:PRO:O	1:A:193:ILE:N	2.49	0.46
1:A:42:PHE:HE1	1:A:47:GLY:O	1.94	0.46
1:A:93:ALA:HB1	1:A:98:GLU:CB	2.40	0.46
1:A:267:LYS:HE2	1:A:270:PHE:CE2	2.51	0.46
1:A:45:LYS:HB3	1:A:45:LYS:HE3	1.69	0.46
1:A:123:THR:CB	1:A:126:HIS:ND1	2.80	0.45
1:A:7:THR:O	1:A:22:GLU:HG3	2.16	0.45
1:A:161:ASP:O	1:A:162:CYS:HB2	2.15	0.45
1:A:299:ALA:O	1:A:300:ALA:C	2.54	0.45
1:A:275:ILE:CD1	1:A:275:ILE:H	1.93	0.45
1:A:72:LEU:HD12	1:A:341:THR:HG23	1.98	0.45
1:A:290:VAL:CG1	1:A:296:ARG:HA	2.47	0.45
1:A:138:LEU:HA	1:A:138:LEU:HD12	1.83	0.45
1:A:123:THR:O	1:A:127:VAL:HG13	2.17	0.45
1:A:94:ARG:NH1	1:A:95:SER:HB3	2.32	0.45
1:A:280:LEU:HD23	1:A:280:LEU:HA	1.70	0.45
1:A:88:ASP:HA	1:A:348:PHE:CE2	2.52	0.44
1:A:30:VAL:HG22	1:A:38:VAL:O	2.17	0.44
1:A:55:LEU:O	1:A:58:PRO:HD3	2.17	0.44
1:A:222:LEU:HD13	1:A:223:PHE:CE1	2.52	0.44
1:A:327:PHE:HA	1:A:330:ARG:HH11	1.82	0.44
1:A:5:ARG:NE	1:A:94:ARG:HB2	2.32	0.44
1:A:5:ARG:NH1	1:A:5:ARG:HG2	2.33	0.44
1:A:123:THR:HB	1:A:126:HIS:HB2	2.00	0.44
1:A:123:THR:HG22	1:A:125:ASP:N	2.29	0.44
1:A:255:ALA:O	1:A:259:ILE:HG12	2.18	0.44
1:A:317:GLU:N	1:A:318:PRO:CD	2.81	0.43
1:A:55:LEU:HD21	1:A:104:LEU:CD1	2.48	0.43
1:A:84:ILE:HA	1:A:165:LYS:HD3	1.99	0.43
1:A:267:LYS:HE2	1:A:270:PHE:HE2	1.83	0.43
1:A:258:TYR:C	1:A:258:TYR:CD2	2.92	0.43

Continued on next page...

Continued from previous page...

Atom-1	Atom-2	Interatomic distance (Å)	Clash overlap (Å)
1:A:108:LEU:HD12	2:A:391:B96:H482	1.99	0.43
1:A:130:LEU:HA	1:A:130:LEU:HD12	1.86	0.43
1:A:94:ARG:O	1:A:95:SER:HB3	2.17	0.43
1:A:313:ASP:OD1	1:A:313:ASP:C	2.56	0.43
1:A:53:LYS:O	1:A:103:TYR:HA	2.18	0.43
1:A:247:LEU:C	1:A:249:LYS:H	2.21	0.43
1:A:56:SER:HB3	1:A:57:ARG:H	1.58	0.43
1:A:259:ILE:H	1:A:259:ILE:HG12	1.66	0.43
1:A:72:LEU:CD1	1:A:344:GLU:HB2	2.47	0.43
1:A:252:SER:OG	1:A:255:ALA:CB	2.67	0.43
1:A:32:SER:HG	1:A:37:SER:HG	1.67	0.43
1:A:290:VAL:O	1:A:296:ARG:NH1	2.39	0.42
1:A:13:LEU:HG	1:A:29:PRO:HG3	2.01	0.42
1:A:127:VAL:HG23	1:A:127:VAL:O	2.19	0.42
1:A:166:ILE:HG22	1:A:167:LEU:N	2.34	0.42
1:A:232:LEU:O	1:A:232:LEU:HD12	2.18	0.42
1:A:108:LEU:HD12	2:A:391:B96:O47	2.20	0.42
1:A:108:LEU:HD12	2:A:391:B96:C48	2.50	0.42
1:A:193:ILE:O	1:A:193:ILE:HG22	2.20	0.42
1:A:46:THR:OG1	1:A:48:LEU:CG	2.67	0.42
1:A:250:ILE:HB	1:A:256:ARG:HG3	2.01	0.42
1:A:327:PHE:HA	1:A:330:ARG:NH1	2.35	0.42
1:A:191:PRO:C	1:A:193:ILE:H	2.22	0.41
1:A:193:ILE:HG23	1:A:200:TYR:HE1	1.84	0.41
1:A:201:ASN:OD1	1:A:293:SER:HB2	2.20	0.41
1:A:141:ILE:HD12	1:A:146:ILE:HB	2.02	0.41
1:A:32:SER:OG	1:A:37:SER:OG	2.37	0.41
1:A:127:VAL:O	1:A:131:ILE:HG12	2.21	0.41
1:A:5:ARG:CG	1:A:5:ARG:HH11	2.33	0.41
1:A:30:VAL:HG11	1:A:40:ALA:HB2	2.03	0.41
1:A:159:ASN:OD1	1:A:163:GLU:HB2	2.20	0.41
1:A:5:ARG:HA	1:A:6:PRO:HD2	1.86	0.41
1:A:193:ILE:HG12	1:A:200:TYR:CE1	2.53	0.41
1:A:229:ILE:HG23	1:A:258:TYR:CZ	2.54	0.41
1:A:192:GLU:C	1:A:193:ILE:HG13	2.41	0.41
1:A:112:ASP:OD2	1:A:112:ASP:C	2.58	0.41
1:A:12:GLU:HA	1:A:16:THR:O	2.21	0.41
1:A:227:ASP:N	1:A:227:ASP:OD1	2.53	0.41
1:A:60:GLN:HE21	1:A:60:GLN:HB2	1.70	0.41
1:A:91:THR:OG1	1:A:92:PRO:CD	2.69	0.41
1:A:197:TRP:NE1	1:A:199:HIS:CE1	2.72	0.40

Continued on next page...

Continued from previous page...

Atom-1	Atom-2	Interatomic distance (Å)	Clash overlap (Å)
1:A:269:ASN:HB3	1:A:272:ASN:ND2	2.35	0.40
1:A:167:LEU:HB2	2:A:391:B96:O1	2.22	0.40

There are no symmetry-related clashes.

5.3 Torsion angles [i](#)

5.3.1 Protein backbone [i](#)

In the following table, the Percentiles column shows the percent Ramachandran outliers of the chain as a percentile score with respect to all X-ray entries followed by that with respect to entries of similar resolution.

The Analysed column shows the number of residues for which the backbone conformation was analysed, and the total number of residues.

Mol	Chain	Analysed	Favoured	Allowed	Outliers	Percentiles	
1	A	319/360 (89%)	270 (85%)	37 (12%)	12 (4%)	4	13

All (12) Ramachandran outliers are listed below:

Mol	Chain	Res	Type
1	A	35	TYR
1	A	37	SER
1	A	56	SER
1	A	113	LEU
1	A	192	GLU
1	A	110	GLY
1	A	26	ASN
1	A	95	SER
1	A	242	PRO
1	A	196	ASN
1	A	58	PRO
1	A	193	ILE

5.3.2 Protein sidechains [i](#)

In the following table, the Percentiles column shows the percent sidechain outliers of the chain as a percentile score with respect to all X-ray entries followed by that with respect to entries of similar resolution.

The Analysed column shows the number of residues for which the sidechain conformation was analysed, and the total number of residues.

Mol	Chain	Analysed	Rotameric	Outliers	Percentiles
1	A	286/320 (89%)	217 (76%)	69 (24%)	1 2

All (69) residues with a non-rotameric sidechain are listed below:

Mol	Chain	Res	Type
1	A	5	ARG
1	A	11	GLN
1	A	12	GLU
1	A	13	LEU
1	A	16	THR
1	A	17	ILE
1	A	22	GLU
1	A	37	SER
1	A	39	CYS
1	A	44	THR
1	A	45	LYS
1	A	48	LEU
1	A	49	ARG
1	A	56	SER
1	A	59	PHE
1	A	60	GLN
1	A	64	HIS
1	A	72	LEU
1	A	73	ARG
1	A	74	LEU
1	A	75	LEU
1	A	76	LYS
1	A	81	GLU
1	A	86	LEU
1	A	87	LEU
1	A	89	VAL
1	A	94	ARG
1	A	96	LEU
1	A	101	ASP
1	A	114	ASN
1	A	128	GLN
1	A	130	LEU
1	A	136	ARG
1	A	138	LEU
1	A	141	ILE

Continued on next page...

Continued from previous page...

Mol	Chain	Res	Type
1	A	150	ASP
1	A	151	LEU
1	A	152	LYS
1	A	154	SER
1	A	162	CYS
1	A	164	LEU
1	A	169	PHE
1	A	186	ARG
1	A	189	ARG
1	A	195	LEU
1	A	198	MET
1	A	199	HIS
1	A	200	TYR
1	A	220	ARG
1	A	222	LEU
1	A	226	THR
1	A	227	ASP
1	A	228	HIS
1	A	229	ILE
1	A	232	LEU
1	A	248	LYS
1	A	249	LYS
1	A	254	SER
1	A	259	ILE
1	A	260	GLN
1	A	261	SER
1	A	272	ASN
1	A	275	ILE
1	A	290	VAL
1	A	330	ARG
1	A	331	ASP
1	A	333	LEU
1	A	338	LYS
1	A	346	ILE

Some sidechains can be flipped to improve hydrogen bonding and reduce clashes. All (8) such sidechains are listed below:

Mol	Chain	Res	Type
1	A	60	GLN
1	A	64	HIS
1	A	80	HIS
1	A	114	ASN

Continued on next page...

Continued from previous page...

Mol	Chain	Res	Type
1	A	148	HIS
1	A	155	ASN
1	A	257	ASN
1	A	272	ASN

5.3.3 RNA [i](#)

There are no RNA molecules in this entry.

5.4 Non-standard residues in protein, DNA, RNA chains [i](#)

There are no non-standard protein/DNA/RNA residues in this entry.

5.5 Carbohydrates [i](#)

There are no carbohydrates in this entry.

5.6 Ligand geometry [i](#)

1 ligand is modelled in this entry.

In the following table, the Counts columns list the number of bonds (or angles) for which Mogul statistics could be retrieved, the number of bonds (or angles) that are observed in the model and the number of bonds (or angles) that are defined in the chemical component dictionary. The Link column lists molecule types, if any, to which the group is linked. The Z score for a bond length (or angle) is the number of standard deviations the observed value is removed from the expected value. A bond length (or angle) with $|Z| > 2$ is considered an outlier worth inspection. RMSZ is the root-mean-square of all Z scores of the bond lengths (or angles).

Mol	Type	Chain	Res	Link	Bond lengths			Bond angles		
					Counts	RMSZ	$\# Z > 2$	Counts	RMSZ	$\# Z > 2$
2	B96	A	391	-	42,43,43	2.77	14 (33%)	54,61,61	1.73	10 (18%)

In the following table, the Chirals column lists the number of chiral outliers, the number of chiral centers analysed, the number of these observed in the model and the number defined in the chemical component dictionary. Similar counts are reported in the Torsion and Rings columns. '-' means no outliers of that kind were identified.

Mol	Type	Chain	Res	Link	Chirals	Torsions	Rings
2	B96	A	391	-	-	0/22/32/32	0/5/5/5

All (14) bond length outliers are listed below:

Mol	Chain	Res	Type	Atoms	Z	Observed(Å)	Ideal(Å)
2	A	391	B96	C16-C13	-14.01	1.32	1.52
2	A	391	B96	C15-N11	-4.82	1.34	1.44
2	A	391	B96	C3-C4	-3.57	1.36	1.43
2	A	391	B96	C14-C13	-3.30	1.35	1.39
2	A	391	B96	C5-C4	-3.25	1.37	1.43
2	A	391	B96	C3-N2	-3.08	1.32	1.41
2	A	391	B96	C10-N9	-2.92	1.33	1.39
2	A	391	B96	C20-C15	-2.77	1.33	1.38
2	A	391	B96	C1-N2	-2.55	1.32	1.37
2	A	391	B96	C6-C5	-2.18	1.36	1.42
2	A	391	B96	C1-N9	-2.17	1.33	1.37
2	A	391	B96	O41-C6	-2.13	1.30	1.36
2	A	391	B96	C8-C3	-2.09	1.33	1.38
2	A	391	B96	C32-C31	2.34	1.42	1.36

All (10) bond angle outliers are listed below:

Mol	Chain	Res	Type	Atoms	Z	Observed(°)	Ideal(°)
2	A	391	B96	C14-C13-C16	-3.94	124.29	129.15
2	A	391	B96	C15-N11-C10	-2.70	125.92	129.02
2	A	391	B96	O1-C1-N2	-2.54	119.73	123.58
2	A	391	B96	C43-N44-C49	-2.16	105.72	111.27
2	A	391	B96	C31-C4-C3	-2.06	119.87	123.00
2	A	391	B96	C17-C16-C13	2.39	114.74	109.86
2	A	391	B96	C46-C45-N44	3.39	115.27	110.12
2	A	391	B96	N9-C1-N2	3.52	118.06	112.53
2	A	391	B96	C16-C13-N12	4.71	125.58	120.58
2	A	391	B96	C48-C49-N44	5.15	117.92	110.12

There are no chirality outliers.

There are no torsion outliers.

There are no ring outliers.

1 monomer is involved in 6 short contacts:

Mol	Chain	Res	Type	Clashes	Symm-Clashes
2	A	391	B96	6	0

5.7 Other polymers [i](#)

There are no such residues in this entry.

5.8 Polymer linkage issues [i](#)

There are no chain breaks in this entry.

6 Fit of model and data ⓘ

6.1 Protein, DNA and RNA chains ⓘ

EDS was not executed - this section will therefore be empty.

6.2 Non-standard residues in protein, DNA, RNA chains ⓘ

EDS was not executed - this section will therefore be empty.

6.3 Carbohydrates ⓘ

EDS was not executed - this section will therefore be empty.

6.4 Ligands ⓘ

EDS was not executed - this section will therefore be empty.

6.5 Other polymers ⓘ

EDS was not executed - this section will therefore be empty.