



# Full wwPDB X-ray Structure Validation Report ⓘ

Feb 1, 2016 – 06:12 PM GMT

PDB ID : 4KVG  
Title : Crystal structure of RIAM RA-PH domains in complex with GTP bound Rap1  
Authors : Zhang, H.; Chang, Y.E.; Brennan, M.L.; Wu, J.  
Deposited on : 2013-05-22  
Resolution : 1.65 Å(reported)

This is a Full wwPDB X-ray Structure Validation Report for a publicly released PDB entry.  
We welcome your comments at [validation@mail.wwpdb.org](mailto:validation@mail.wwpdb.org)  
A user guide is available at  
<http://wwpdb.org/validation/2016/XrayValidationReportHelp>  
with specific help available everywhere you see the ⓘ symbol.

---

The following versions of software and data (see [references ⓘ](#)) were used in the production of this report:

MolProbity : 4.02b-467  
Mogul : 1.7 (RC4), CSD as536be (2015)  
Xtriage (Phenix) : 1.9-1692  
EDS : rb-20026688  
Percentile statistics : 20151230.v01 (using entries in the PDB archive December 30th 2015)  
Refmac : 5.8.0135  
CCP4 : 6.5.0  
Ideal geometry (proteins) : Engh & Huber (2001)  
Ideal geometry (DNA, RNA) : Parkinson et al. (1996)  
Validation Pipeline (wwPDB-VP) : trunk26865

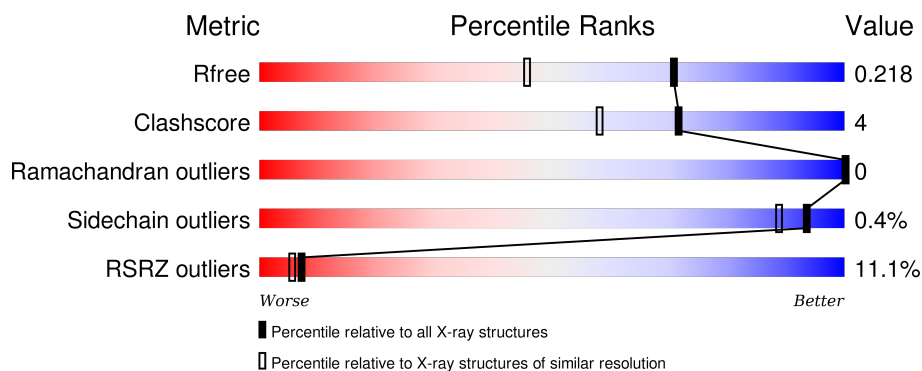
# 1 Overall quality at a glance i

The following experimental techniques were used to determine the structure:

## *X-RAY DIFFRACTION*

The reported resolution of this entry is 1.65 Å.

Percentile scores (ranging between 0-100) for global validation metrics of the entry are shown in the following graphic. The table shows the number of entries on which the scores are based.



Metric	Whole archive (#Entries)	Similar resolution (#Entries, resolution range(Å))
$R_{free}$	91344	1226 (1.66-1.66)
Clashscore	102246	1323 (1.66-1.66)
Ramachandran outliers	100387	1295 (1.66-1.66)
Sidechain outliers	100360	1295 (1.66-1.66)
RSRZ outliers	91569	1227 (1.66-1.66)

The table below summarises the geometric issues observed across the polymeric chains and their fit to the electron density. The red, orange, yellow and green segments on the lower bar indicate the fraction of residues that contain outliers for  $\geq 3$ , 2, 1 and 0 types of geometric quality criteria. A grey segment represents the fraction of residues that are not modelled. The numeric value for each fraction is indicated below the corresponding segment, with a dot representing fractions  $\leq 5\%$ . The upper red bar (where present) indicates the fraction of residues that have poor fit to the electron density. The numeric value is given above the bar.

Mol	Chain	Length	Quality of chain
1	A	168	<div> <div>5%</div> <div>92%</div> <div>5% ..</div> </div>
1	C	168	<div> <div>27%</div> <div>90%</div> <div>5% 5%</div> </div>
2	B	260	<div> <div>6%</div> <div>87%</div> <div>8% 5%</div> </div>
2	D	260	<div> <div>8%</div> <div>84%</div> <div>10% 5%</div> </div>

## 2 Entry composition

There are 6 unique types of molecules in this entry. The entry contains 7731 atoms, of which 0 are hydrogens and 0 are deuteriums.

In the tables below, the ZeroOcc column contains the number of atoms modelled with zero occupancy, the AltConf column contains the number of residues with at least one atom in alternate conformation and the Trace column contains the number of residues modelled with at most 2 atoms.

- Molecule 1 is a protein called Ras-related protein Rap-1A.

Mol	Chain	Residues	Atoms					ZeroOcc	AltConf	Trace
1	A	165	Total	C	N	O	S	0	10	0
			1378	868	237	263	10			
1	C	160	Total	C	N	O	S	0	1	0
			1282	804	219	250	9			

There are 6 discrepancies between the modelled and reference sequences:

Chain	Residue	Modelled	Actual	Comment	Reference
A	0	HIS	-	EXPRESSION TAG	UNP P62834
A	12	VAL	GLY	ENGINEERED MUTATION	UNP P62834
A	63	GLU	GLN	ENGINEERED MUTATION	UNP P62834
C	0	HIS	-	EXPRESSION TAG	UNP P62834
C	12	VAL	GLY	ENGINEERED MUTATION	UNP P62834
C	63	GLU	GLN	ENGINEERED MUTATION	UNP P62834

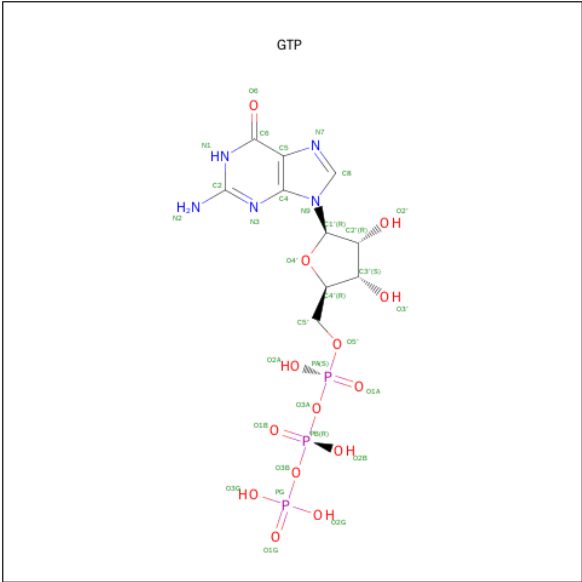
- Molecule 2 is a protein called Amyloid beta A4 precursor protein-binding family B member 1-interacting protein.

Mol	Chain	Residues	Atoms					ZeroOcc	AltConf	Trace
2	B	246	Total	C	N	O	S	0	17	0
			2138	1384	349	388	17			
2	D	247	Total	C	N	O	S	0	12	0
			2125	1373	348	387	17			

There are 2 discrepancies between the modelled and reference sequences:

Chain	Residue	Modelled	Actual	Comment	Reference
B	178	MET	-	EXPRESSION TAG	UNP Q8R5A3
D	178	MET	-	EXPRESSION TAG	UNP Q8R5A3

- Molecule 3 is GUANOSINE-5'-TRIPHOSPHATE (three-letter code: GTP) (formula: C<sub>10</sub>H<sub>16</sub>N<sub>5</sub>O<sub>14</sub>P<sub>3</sub>).



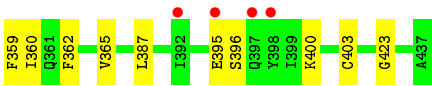


Mol	Chain	Residues	Atoms			ZeroOcc	AltConf
5	B	1	Total	C	O	0	0
			4	2	2		
5	D	1	Total	C	O	0	0
			4	2	2		

- Molecule 6 is water.

Mol	Chain	Residues	Atoms		ZeroOcc	AltConf
6	A	113	Total	O	0	0
			113	113		
6	B	290	Total	O	0	6
			296	296		
6	C	33	Total	O	0	0
			33	33		
6	D	289	Total	O	0	3
			292	292		





## 4 Data and refinement statistics

Property	Value	Source
Space group	P 21 21 21	Depositor
Cell constants a, b, c, $\alpha$ , $\beta$ , $\gamma$	82.47Å 85.85Å 160.85Å 90.00° 90.00° 90.00°	Depositor
Resolution (Å)	47.82 – 1.65 47.82 – 1.65	Depositor EDS
% Data completeness (in resolution range)	99.3 (47.82-1.65) 99.3 (47.82-1.65)	Depositor EDS
$R_{merge}$	(Not available)	Depositor
$R_{sym}$	(Not available)	Depositor
$\langle I/\sigma(I) \rangle$ <sup>1</sup>	2.67 (at 1.65Å)	Xtriage
Refinement program	REFMAC 5.6.0117	Depositor
R, $R_{free}$	0.197 , 0.219 0.196 , 0.218	Depositor DCC
$R_{free}$ test set	6879 reflections (5.29%)	DCC
Wilson B-factor (Å <sup>2</sup> )	19.0	Xtriage
Anisotropy	0.118	Xtriage
Bulk solvent $k_{sol}$ (e/Å <sup>3</sup> ), $B_{sol}$ (Å <sup>2</sup> )	0.34 , 40.0	EDS
Estimated twinning fraction	0.002 for k,h,-l	Xtriage
L-test for twinning <sup>2</sup>	$\langle  L  \rangle = 0.49$ , $\langle L^2 \rangle = 0.33$	Xtriage
Outliers	5 of 137213 reflections (0.004%)	Xtriage
$F_o, F_c$ correlation	0.96	EDS
Total number of atoms	7731	wwPDB-VP
Average B, all atoms (Å <sup>2</sup> )	29.0	wwPDB-VP

Xtriage's analysis on translational NCS is as follows: *The largest off-origin peak in the Patterson function is 14.51% of the height of the origin peak. No significant pseudotranslation is detected.*

<sup>1</sup>Intensities estimated from amplitudes.

<sup>2</sup>Theoretical values of  $\langle |L| \rangle$ ,  $\langle L^2 \rangle$  for acentric reflections are 0.5, 0.375 respectively for untwinned datasets, and 0.333, 0.2 for perfectly twinned datasets.



## 5 Model quality [i](#)

### 5.1 Standard geometry [i](#)

Bond lengths and bond angles in the following residue types are not validated in this section: GTP, MG, EDO

The Z score for a bond length (or angle) is the number of standard deviations the observed value is removed from the expected value. A bond length (or angle) with  $|Z| > 5$  is considered an outlier worth inspection. RMSZ is the root-mean-square of all Z scores of the bond lengths (or angles).

Mol	Chain	Bond lengths		Bond angles	
		RMSZ	$\# Z  > 5$	RMSZ	$\# Z  > 5$
1	A	0.35	1/1418 (0.1%)	0.50	0/1904
1	C	0.33	0/1299	0.47	0/1748
2	B	0.45	2/2233 (0.1%)	0.58	0/3005
2	D	0.44	1/2209 (0.0%)	0.58	0/2971
All	All	0.41	4/7159 (0.1%)	0.55	0/9628

All (4) bond length outliers are listed below:

Mol	Chain	Res	Type	Atoms	Z	Observed(Å)	Ideal(Å)
2	B	250	TRP	CD2-CE2	5.24	1.47	1.41
1	A	138	TRP	CD2-CE2	5.10	1.47	1.41
2	D	330	TRP	CD2-CE2	5.08	1.47	1.41
2	B	330	TRP	CD2-CE2	5.07	1.47	1.41

There are no bond angle outliers.

There are no chirality outliers.

There are no planarity outliers.

### 5.2 Too-close contacts [i](#)

In the following table, the Non-H and H(model) columns list the number of non-hydrogen atoms and hydrogen atoms in the chain respectively. The H(added) column lists the number of hydrogen atoms added and optimized by MolProbity. The Clashes column lists the number of clashes within the asymmetric unit, whereas Symm-Clashes lists symmetry related clashes.

Mol	Chain	Non-H	H(model)	H(added)	Clashes	Symm-Clashes
1	A	1378	0	1407	6	0
1	C	1282	0	1282	9	0
2	B	2138	0	2185	24	0

*Continued on next page...*

*Continued from previous page...*

Mol	Chain	Non-H	H(model)	H(added)	Clashes	Symm-Clashes
2	D	2125	0	2155	21	0
3	A	32	0	12	0	0
3	C	32	0	12	1	0
4	A	1	0	0	0	0
4	C	1	0	0	0	0
5	B	4	0	6	0	0
5	D	4	0	6	0	0
6	A	113	0	0	0	0
6	B	296	0	0	3	0
6	C	33	0	0	0	0
6	D	292	0	0	1	0
All	All	7731	0	7065	60	0

The all-atom clashscore is defined as the number of clashes found per 1000 atoms (including hydrogen atoms). The all-atom clashscore for this structure is 4.

All (60) close contacts within the same asymmetric unit are listed below, sorted by their clash magnitude.

Atom-1	Atom-2	Interatomic distance (Å)	Clash overlap (Å)
2:B:311[B]:ILE:HD11	2:B:424[B]:LYS:CG	1.66	1.23
2:B:311[B]:ILE:HD11	2:B:424[B]:LYS:HG2	1.19	1.11
2:B:311[B]:ILE:CD1	2:B:424[B]:LYS:HG3	1.79	1.10
2:D:342[B]:ILE:HG22	2:D:360:ILE:HG22	1.34	1.10
2:B:311[B]:ILE:CD1	2:B:424[B]:LYS:CG	2.33	1.06
2:B:360[B]:ILE:HD11	2:B:400[B]:LYS:HG3	1.50	0.93
2:B:311[B]:ILE:HD13	2:B:424[B]:LYS:HG3	1.49	0.93
2:B:352:THR:HG21	2:B:355:ASP:HB3	1.59	0.84
2:B:311[B]:ILE:CD1	2:B:424[B]:LYS:HG2	2.07	0.72
2:B:227[B]:ILE:HD11	2:B:257:LYS:NZ	2.07	0.69
2:D:360:ILE:HD12	2:D:400[B]:LYS:HD2	1.77	0.65
2:D:342[B]:ILE:CG2	2:D:360:ILE:HG22	2.20	0.65
1:A:150[A]:SER:O	1:A:151[A]:LYS:HB2	1.96	0.65
2:B:311[B]:ILE:HD11	2:B:424[B]:LYS:HG3	1.47	0.59
1:A:9[A]:LEU:HD21	1:A:71:TYR:CE1	2.39	0.58
2:B:360[B]:ILE:HD11	2:B:400[B]:LYS:CG	2.30	0.57
1:A:24:VAL:HA	1:A:42[A]:LYS:HD2	1.87	0.57
2:D:359:PHE:CZ	2:D:400[B]:LYS:HD3	2.41	0.56
1:A:100:ILE:O	1:A:104:LYS:HG2	2.05	0.56
2:D:336:LEU:HD13	2:D:345:VAL:HG21	1.88	0.55
2:D:227[B]:ILE:HD11	2:D:257:LYS:HE3	1.89	0.55
1:C:80:LEU:HB3	1:C:93:LEU:HD23	1.88	0.54

*Continued on next page...*

*Continued from previous page...*

Atom-1	Atom-2	Interatomic distance (Å)	Clash overlap (Å)
2:B:313[B]:VAL:HG23	6:B:801:HOH:O	2.07	0.54
2:D:227[B]:ILE:HD11	2:D:257:LYS:CE	2.38	0.54
2:D:278:LEU:O	2:D:279:ASP:HB3	2.09	0.52
2:D:360:ILE:HD11	2:D:365:VAL:HG11	1.91	0.52
1:C:89:THR:O	1:C:93:LEU:HD12	2.10	0.51
2:B:227[B]:ILE:HD11	2:B:257:LYS:HZ3	1.75	0.51
2:B:352:THR:CB	2:B:353:SER:HB3	2.41	0.50
1:C:113:LEU:HD23	1:C:138:TRP:CZ3	2.46	0.50
1:A:97[B]:ARG:HD2	1:A:138:TRP:CD2	2.46	0.50
2:B:345:VAL:HG22	6:B:712:HOH:O	2.12	0.49
2:B:227[B]:ILE:HD11	2:B:257:LYS:HZ1	1.74	0.49
2:B:352:THR:HB	2:B:353:SER:C	2.32	0.49
2:B:352:THR:HG21	2:B:355:ASP:CB	2.39	0.48
1:A:24:VAL:HA	1:A:42[B]:LYS:HD2	1.95	0.48
1:C:82:TYR:HE1	1:C:113:LEU:CD1	2.27	0.48
2:D:336:LEU:HD13	2:D:345:VAL:CG2	2.43	0.47
1:C:113:LEU:HD12	1:C:143:PHE:CD2	2.49	0.47
2:D:227[B]:ILE:HG22	2:D:234:GLU:HB3	1.98	0.45
2:D:349:LYS:HE3	2:D:352:THR:HG21	1.98	0.45
2:B:352:THR:HB	2:B:353:SER:HB3	1.98	0.45
1:C:89:THR:O	1:C:93:LEU:CD1	2.65	0.45
1:C:82:TYR:HE1	1:C:113:LEU:HD11	1.82	0.45
2:D:321:TYR:HB2	2:D:403:CYS:HB3	1.99	0.45
2:D:360:ILE:HG21	2:D:387:LEU:HD13	1.99	0.44
2:B:189:ASP:O	2:B:190:SER:HB2	2.19	0.43
2:B:376:LYS:NZ	6:B:808:HOH:O	2.37	0.43
2:B:321:TYR:HB2	2:B:403:CYS:HB3	2.00	0.43
2:D:395:GLU:HG2	6:D:847:HOH:O	2.18	0.43
2:B:360[A]:ILE:HG21	2:B:387:LEU:HD13	2.02	0.42
2:D:311:ILE:HD13	2:D:423:GLY:HA2	2.01	0.42
2:B:232:GLN:OE1	2:B:376:LYS:HD3	2.20	0.42
2:D:342[A]:ILE:HG13	2:D:362:PHE:CZ	2.55	0.41
1:C:113:LEU:HD12	1:C:143:PHE:HD2	1.85	0.41
1:C:117:LYS:HG2	3:C:201:GTP:C6	2.56	0.40
2:D:209:ASN:OD1	2:D:213:LYS:HE2	2.20	0.40
2:D:261:LEU:HD13	2:D:263:LYS:HG2	2.03	0.40
2:D:395:GLU:O	2:D:396:SER:HB3	2.22	0.40
2:D:225:TYR:CZ	2:D:263:LYS:HE3	2.57	0.40

There are no symmetry-related clashes.

## 5.3 Torsion angles [i](#)

### 5.3.1 Protein backbone [i](#)

In the following table, the Percentiles column shows the percent Ramachandran outliers of the chain as a percentile score with respect to all X-ray entries followed by that with respect to entries of similar resolution.

The Analysed column shows the number of residues for which the backbone conformation was analysed, and the total number of residues.

Mol	Chain	Analysed	Favoured	Allowed	Outliers	Percentiles	
1	A	171/168 (102%)	168 (98%)	3 (2%)	0	100	100
1	C	157/168 (94%)	154 (98%)	3 (2%)	0	100	100
2	B	259/260 (100%)	255 (98%)	4 (2%)	0	100	100
2	D	256/260 (98%)	250 (98%)	6 (2%)	0	100	100
All	All	843/856 (98%)	827 (98%)	16 (2%)	0	100	100

There are no Ramachandran outliers to report.

### 5.3.2 Protein sidechains [i](#)

In the following table, the Percentiles column shows the percent sidechain outliers of the chain as a percentile score with respect to all X-ray entries followed by that with respect to entries of similar resolution.

The Analysed column shows the number of residues for which the sidechain conformation was analysed, and the total number of residues.

Mol	Chain	Analysed	Rotameric	Outliers	Percentiles	
1	A	157/150 (105%)	157 (100%)	0	100	100
1	C	144/150 (96%)	143 (99%)	1 (1%)	88	78
2	B	243/239 (102%)	242 (100%)	1 (0%)	93	89
2	D	240/239 (100%)	239 (100%)	1 (0%)	93	89
All	All	784/778 (101%)	781 (100%)	3 (0%)	93	89

All (3) residues with a non-rotameric sidechain are listed below:

Mol	Chain	Res	Type
2	B	351	LYS
1	C	69	ASP
2	D	261	LEU

Some sidechains can be flipped to improve hydrogen bonding and reduce clashes. There are no such sidechains identified.

### 5.3.3 RNA [i](#)

There are no RNA molecules in this entry.

## 5.4 Non-standard residues in protein, DNA, RNA chains [i](#)

There are no non-standard protein/DNA/RNA residues in this entry.

## 5.5 Carbohydrates [i](#)

There are no carbohydrates in this entry.

## 5.6 Ligand geometry [i](#)

Of 6 ligands modelled in this entry, 2 are monoatomic - leaving 4 for Mogul analysis.

In the following table, the Counts columns list the number of bonds (or angles) for which Mogul statistics could be retrieved, the number of bonds (or angles) that are observed in the model and the number of bonds (or angles) that are defined in the chemical component dictionary. The Link column lists molecule types, if any, to which the group is linked. The Z score for a bond length (or angle) is the number of standard deviations the observed value is removed from the expected value. A bond length (or angle) with  $|Z| > 2$  is considered an outlier worth inspection. RMSZ is the root-mean-square of all Z scores of the bond lengths (or angles).

Mol	Type	Chain	Res	Link	Bond lengths			Bond angles		
					Counts	RMSZ	$\# Z  > 2$	Counts	RMSZ	$\# Z  > 2$
3	GTP	A	201	4	25,34,34	1.14	2 (8%)	34,54,54	1.80	8 (23%)
5	EDO	B	501	-	3,3,3	0.46	0	2,2,2	0.25	0
3	GTP	C	201	4	25,34,34	1.22	2 (8%)	34,54,54	1.75	6 (17%)
5	EDO	D	501	-	3,3,3	0.46	0	2,2,2	0.09	0

In the following table, the Chirals column lists the number of chiral outliers, the number of chiral centers analysed, the number of these observed in the model and the number defined in the chemical component dictionary. Similar counts are reported in the Torsion and Rings columns. '-' means no outliers of that kind were identified.

Mol	Type	Chain	Res	Link	Chirals	Torsions	Rings
3	GTP	A	201	4	-	0/18/38/38	0/3/3/3
5	EDO	B	501	-	-	0/1/1/1	0/0/0/0

*Continued on next page...*

*Continued from previous page...*

Mol	Type	Chain	Res	Link	Chirals	Torsions	Rings
3	GTP	C	201	4	-	0/18/38/38	0/3/3/3
5	EDO	D	501	-	-	0/1/1/1	0/0/0/0

All (4) bond length outliers are listed below:

Mol	Chain	Res	Type	Atoms	Z	Observed(Å)	Ideal(Å)
3	A	201	GTP	C5-C4	3.06	1.47	1.40
3	C	201	GTP	C5-C4	3.26	1.47	1.40
3	A	201	GTP	C6-C5	3.54	1.48	1.41
3	C	201	GTP	C6-C5	3.90	1.49	1.41

All (14) bond angle outliers are listed below:

Mol	Chain	Res	Type	Atoms	Z	Observed(°)	Ideal(°)
3	A	201	GTP	C5-C6-N1	-4.38	117.60	123.59
3	C	201	GTP	C5-C6-N1	-4.10	117.98	123.59
3	A	201	GTP	C6-C5-C4	-3.42	116.81	120.90
3	C	201	GTP	C6-C5-C4	-3.34	116.90	120.90
3	A	201	GTP	N3-C2-N1	-3.15	122.65	127.44
3	C	201	GTP	N3-C2-N1	-3.14	122.66	127.44
3	C	201	GTP	C4-C5-N7	-3.13	106.60	109.48
3	C	201	GTP	PA-O3A-PB	-2.86	124.69	132.73
3	A	201	GTP	C4-C5-N7	-2.73	106.97	109.48
3	A	201	GTP	PA-O3A-PB	-2.57	125.52	132.73
3	A	201	GTP	C2'-C1'-N9	-2.44	110.56	114.29
3	A	201	GTP	C1'-N9-C4	-2.31	123.45	126.94
3	C	201	GTP	C6-N1-C2	4.75	122.53	115.94
3	A	201	GTP	C6-N1-C2	5.01	122.89	115.94

There are no chirality outliers.

There are no torsion outliers.

There are no ring outliers.

1 monomer is involved in 1 short contact:

Mol	Chain	Res	Type	Clashes	Symm-Clashes
3	C	201	GTP	1	0

## 5.7 Other polymers ⓘ

There are no such residues in this entry.

## 5.8 Polymer linkage issues

There are no chain breaks in this entry.

## 6 Fit of model and data ⓘ

### 6.1 Protein, DNA and RNA chains ⓘ

In the following table, the column labelled ‘#RSRZ> 2’ contains the number (and percentage) of RSRZ outliers, followed by percent RSRZ outliers for the chain as percentile scores relative to all X-ray entries and entries of similar resolution. The OWAB column contains the minimum, median, 95<sup>th</sup> percentile and maximum values of the occupancy-weighted average B-factor per residue. The column labelled ‘Q< 0.9’ lists the number of (and percentage) of residues with an average occupancy less than 0.9.

Mol	Chain	Analysed	<RSRZ>	#RSRZ>2	OWAB(Å <sup>2</sup> )	Q<0.9
1	A	165/168 (98%)	0.10	9 (5%) 29 26	15, 25, 45, 64	0
1	C	160/168 (95%)	1.27	46 (28%) 1 1	25, 54, 98, 113	0
2	B	246/260 (94%)	0.53	16 (6%) 22 20	11, 18, 41, 78	0
2	D	247/260 (95%)	0.61	20 (8%) 15 13	10, 19, 39, 71	0
All	All	818/856 (95%)	0.61	91 (11%) 7 5	10, 22, 75, 113	0

All (91) RSRZ outliers are listed below:

Mol	Chain	Res	Type	RSRZ
2	B	348	GLY	11.2
2	D	353	SER	10.2
2	B	353	SER	8.9
2	B	350	THR	8.6
1	C	108	ASP	7.4
1	C	29	VAL	7.4
2	B	354	ARG	7.3
2	D	398	TYR	7.2
1	A	66	ALA	7.2
2	D	354	ARG	7.1
2	B	349	LYS	7.0
1	C	139	CYS	6.0
2	B	355	ASP	6.0
1	C	31	LYS	5.5
1	C	105	ASP	5.5
1	A	67	MET	5.4
2	D	352	THR	5.4
2	B	347	LYS	5.3
2	B	345	VAL	5.1
1	C	106	THR	5.1
2	B	178	MET	5.0

*Continued on next page...*



*Continued from previous page...*

Mol	Chain	Res	Type	RSRZ
1	C	109	VAL	5.0
2	B	352	THR	4.8
2	B	346	PRO	4.8
2	D	279	ASP	4.7
2	D	347	LYS	4.6
1	A	61	THR	4.3
1	C	70	LEU	4.3
1	C	101	LEU	4.2
1	C	141	CYS	4.2
1	C	138	TRP	4.1
1	C	2	ARG	4.0
1	C	140	ASN	4.0
1	C	104	LYS	4.0
2	D	348	GLY	3.8
1	C	129	GLU	3.5
2	D	355	ASP	3.5
2	B	351	LYS	3.5
2	D	351	LYS	3.4
2	D	178	MET	3.3
2	D	349	LYS	3.3
1	C	122	ASP	3.1
2	B	252	ARG	3.1
2	B	356	LEU	3.1
1	C	100	ILE	3.0
1	C	88	SER	3.0
1	A	65	THR	2.9
2	D	344[A]	TYR	2.9
1	C	93	LEU	2.9
1	C	137	GLN	2.9
2	B	315	GLU	2.8
1	C	27	ILE	2.7
2	D	346	PRO	2.7
1	C	90	PHE	2.7
1	C	32	TYR	2.7
1	C	121	GLU	2.7
1	C	61	THR	2.7
1	C	9	LEU	2.6
2	D	350	THR	2.6
1	C	113	LEU	2.6
1	C	133	ASN	2.5
1	C	84	ILE	2.5
2	D	300	TYR	2.5

*Continued on next page...*

*Continued from previous page...*

Mol	Chain	Res	Type	RSRZ
2	D	397	GLN	2.5
2	B	278	LEU	2.5
2	D	392[A]	ILE	2.5
1	C	136	ARG	2.5
1	C	107	GLU	2.4
1	C	85	THR	2.4
1	C	134	LEU	2.4
1	C	95	ASP	2.4
2	D	345	VAL	2.3
2	D	395	GLU	2.3
1	A	95	ASP	2.3
1	A	167	ARG	2.3
1	C	30	GLU	2.3
1	C	118	CYS	2.3
1	C	161	LEU	2.3
1	A	108	ASP	2.3
1	C	160	ASP	2.2
1	A	71	TYR	2.2
1	C	71	TYR	2.1
1	C	103	VAL	2.1
2	D	278	LEU	2.1
1	C	132	GLN	2.1
1	A	0	HIS	2.1
1	C	3	GLU	2.1
1	C	125	VAL	2.0
1	C	92	ASP	2.0
1	C	120	LEU	2.0
1	C	91	ASN	2.0

## 6.2 Non-standard residues in protein, DNA, RNA chains [i](#)

There are no non-standard protein/DNA/RNA residues in this entry.

## 6.3 Carbohydrates [i](#)

There are no carbohydrates in this entry.

## 6.4 Ligands [i](#)

In the following table, the Atoms column lists the number of modelled atoms in the group and the number defined in the chemical component dictionary. LLDF column lists the quality of electron

density of the group with respect to its neighbouring residues in protein, DNA or RNA chains. The B-factors column lists the minimum, median, 95<sup>th</sup> percentile and maximum values of B factors of atoms in the group. The column labelled 'Q< 0.9' lists the number of atoms with occupancy less than 0.9.

Mol	Type	Chain	Res	Atoms	RSCC	RSR	LLDF	B-factors(Å <sup>2</sup> )	Q<0.9
3	GTP	C	201	32/32	0.94	0.13	-0.07	29,38,39,39	0
3	GTP	A	201	32/32	0.98	0.07	-0.61	15,19,20,21	0
4	MG	C	202	1/1	0.93	0.07	-0.85	24,24,24,24	0
4	MG	A	202	1/1	0.99	0.07	-1.09	15,15,15,15	0
5	EDO	D	501	4/4	0.95	0.08	-1.39	19,19,20,22	0
5	EDO	B	501	4/4	0.97	0.08	-1.47	18,19,19,20	0

## 6.5 Other polymers

There are no such residues in this entry.