



wwPDB X-ray Structure Validation Summary Report ⓘ

Jan 31, 2016 – 08:34 PM GMT

PDB ID : 1KWO
Title : SCALLOP MYOSIN S1-ATPgammaS-p-PDM IN THE ACTIN-DETACHED CONFORMATION
Authors : Himmel, D.M.; Gourinath, S.; Reshetnikova, L.; Shen, Y.; Szent-Gyorgyi, G.; Cohen, C.
Deposited on : 2002-01-30
Resolution : 3.80 Å(reported)

This is a wwPDB X-ray Structure Validation Summary Report for a publicly released PDB entry.
We welcome your comments at validation@mail.wwpdb.org
A user guide is available at
<http://wwpdb.org/validation/2016/XrayValidationReportHelp>
with specific help available everywhere you see the ⓘ symbol.

The following versions of software and data (see [references ⓘ](#)) were used in the production of this report:

MolProbity : 4.02b-467
Mogul : 1.7 (RC4), CSD as536be (2015)
Xtriage (Phenix) : **NOT EXECUTED**
EDS : **NOT EXECUTED**
Percentile statistics : 20151230.v01 (using entries in the PDB archive December 30th 2015)
Ideal geometry (proteins) : Engh & Huber (2001)
Ideal geometry (DNA, RNA) : Parkinson et al. (1996)
Validation Pipeline (wwPDB-VP) : trunk26865

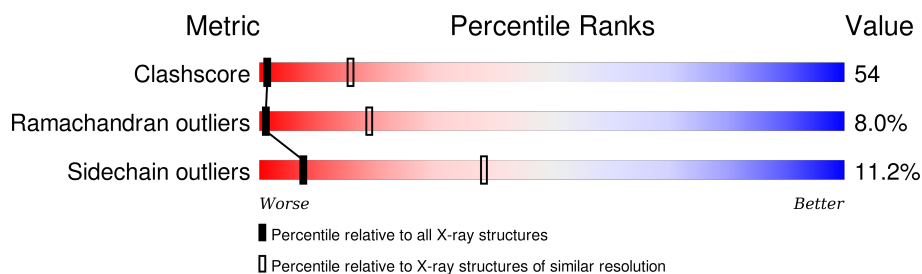
1 Overall quality at a glance

The following experimental techniques were used to determine the structure:

X-RAY DIFFRACTION

The reported resolution of this entry is 3.80 Å.

Percentile scores (ranging between 0-100) for global validation metrics of the entry are shown in the following graphic. The table shows the number of entries on which the scores are based.



Metric	Whole archive (#Entries)	Similar resolution (#Entries, resolution range(Å))
Clashscore	102246	1458 (4.10-3.50)
Ramachandran outliers	100387	1397 (4.10-3.50)
Sidechain outliers	100360	1392 (4.10-3.50)

The table below summarises the geometric issues observed across the polymeric chains and their fit to the electron density. The red, orange, yellow and green segments on the lower bar indicate the fraction of residues that contain outliers for ≥ 3 , 2, 1 and 0 types of geometric quality criteria. A grey segment represents the fraction of residues that are not modelled. The numeric value for each fraction is indicated below the corresponding segment, with a dot representing fractions $\leq 5\%$. The upper red bar (where present) indicates the fraction of residues that have poor fit to the electron density. The numeric value is given above the bar.

Note EDS was not executed.

Mol	Chain	Length	Quality of chain
1	A	835	
2	B	156	
3	C	156	

The following table lists non-polymeric compounds, carbohydrate monomers and non-standard residues in protein, DNA, RNA chains that are outliers for geometric or electron-density-fit criteria:

Mol	Type	Chain	Res	Chirality	Geometry	Clashes	Electron density
7	PDM	A	900	X	-	X	-

2 Entry composition

There are 8 unique types of molecules in this entry. The entry contains 8108 atoms, of which 0 are hydrogens and 0 are deuteriums.

In the tables below, the ZeroOcc column contains the number of atoms modelled with zero occupancy, the AltConf column contains the number of residues with at least one atom in alternate conformation and the Trace column contains the number of residues modelled with at most 2 atoms.

- Molecule 1 is a protein called MYOSIN HEAVY CHAIN.

Mol	Chain	Residues	Atoms					ZeroOcc	AltConf	Trace
1	A	780	Total	C	N	O	S	1	0	0
			5867	3725	1009	1100	33			

- Molecule 2 is a protein called MYOSIN REGULATORY LIGHT CHAIN.

Mol	Chain	Residues	Atoms					ZeroOcc	AltConf	Trace
2	B	142	Total	C	N	O	S	3	0	0
			1032	646	165	214	7			

- Molecule 3 is a protein called MYOSIN ESSENTIAL LIGHT CHAIN.

Mol	Chain	Residues	Atoms					ZeroOcc	AltConf	Trace
3	C	153	Total	C	N	O	S	0	0	0
			1148	722	183	236	7			

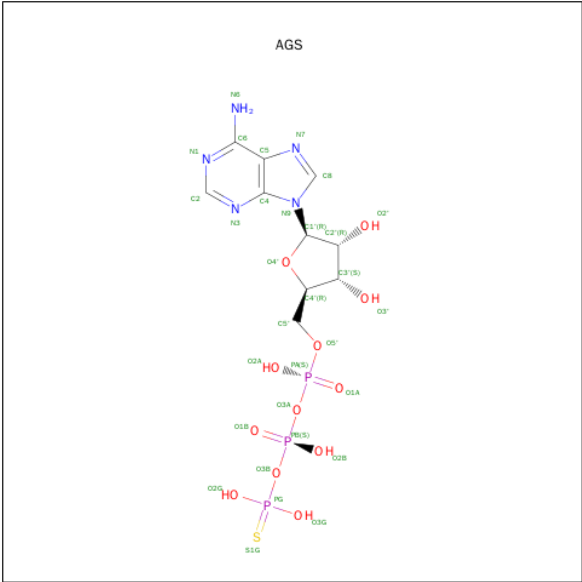
- Molecule 4 is CALCIUM ION (three-letter code: CA) (formula: Ca).

Mol	Chain	Residues	Atoms		ZeroOcc	AltConf
4	C	1	Total	Ca	0	0
			1	1		

- Molecule 5 is MAGNESIUM ION (three-letter code: MG) (formula: Mg).

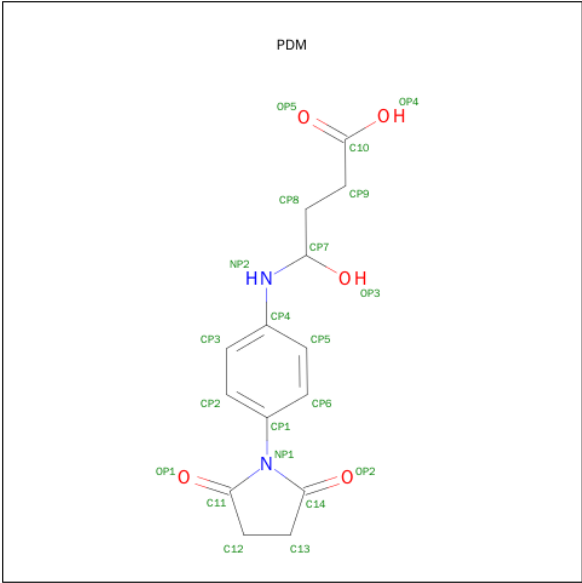
Mol	Chain	Residues	Atoms		ZeroOcc	AltConf
5	A	1	Total	Mg	0	0
			1	1		
5	C	1	Total	Mg	0	0
			1	1		

- Molecule 6 is PHOSPHOTHIOPHOSPHORIC ACID-ADENYLATE ESTER (three-letter code: AGS) (formula: C₁₀H₁₆N₅O₁₂P₃S).



Mol	Chain	Residues	Atoms					ZeroOcc	AltConf	
6	A	1	Total	C	N	O	P	S	0	0
			31	10	5	12	3	1		

- Molecule 7 is 4-[4-(2,5-DIOXO-PYRROLIDIN-1-YL)-PHENYLAMINO]-4-HYDROXY-BU TYRIC ACID (three-letter code: PDM) (formula: C₁₄H₁₆N₂O₅).



Mol	Chain	Residues	Atoms				ZeroOcc	AltConf
7	A	1	Total	C	N	O	0	0
			21	14	2	5		

- Molecule 8 is water.

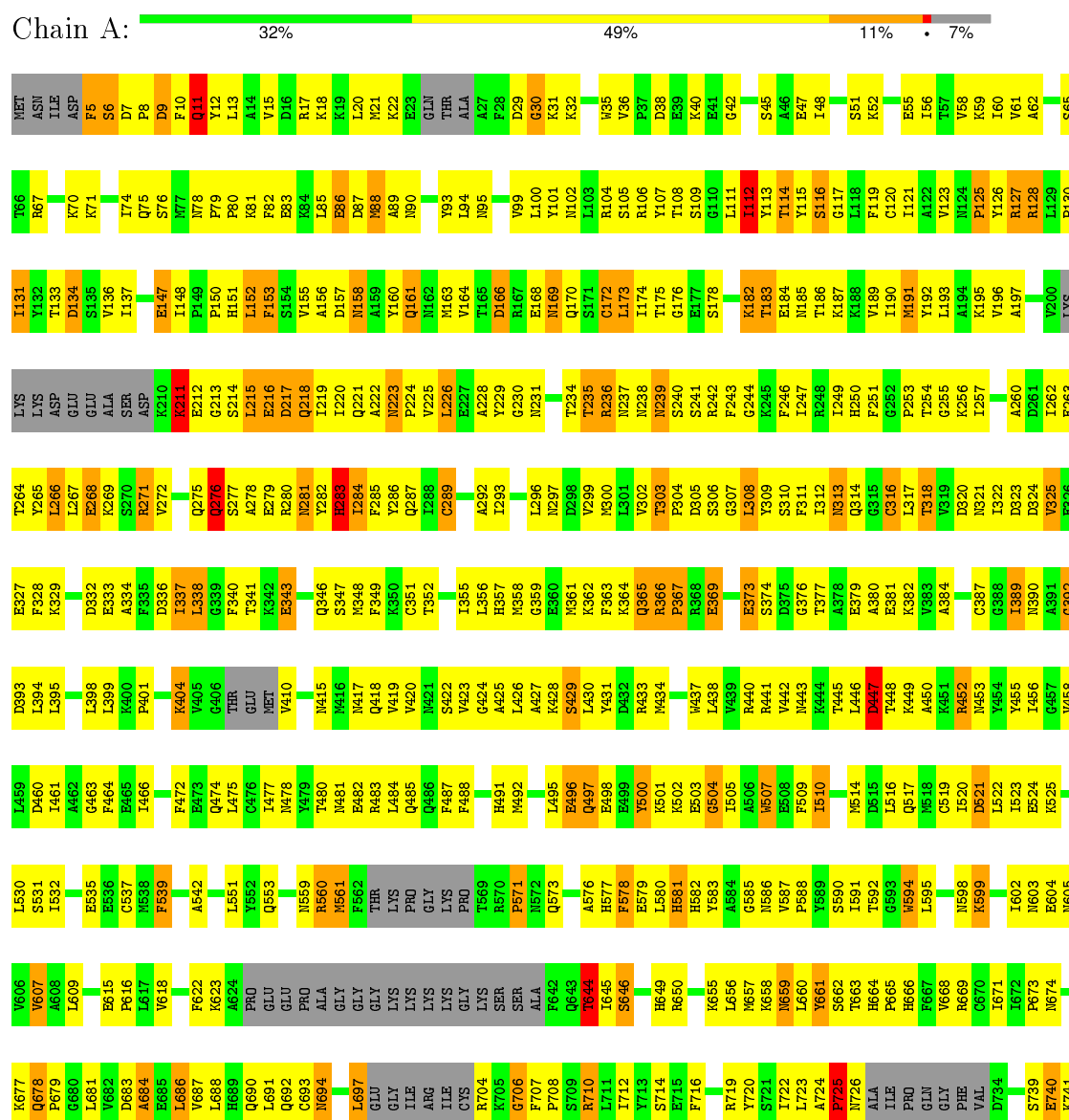
Mol	Chain	Residues	Atoms		ZeroOcc	AltConf
8	A	3	Total 3	O 3	0	0
8	B	1	Total 1	O 1	0	0
8	C	2	Total 2	O 2	0	0

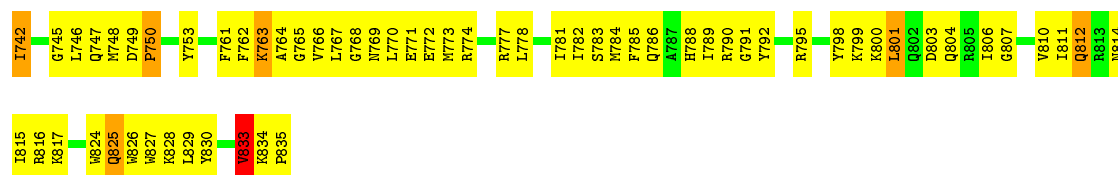
3 Residue-property plots

These plots are drawn for all protein, RNA and DNA chains in the entry. The first graphic for a chain summarises the proportions of errors displayed in the second graphic. The second graphic shows the sequence view annotated by issues in geometry and electron density. Residues are color-coded according to the number of geometric quality criteria for which they contain at least one outlier: green = 0, yellow = 1, orange = 2 and red = 3 or more. A red dot above a residue indicates a poor fit to the electron density ($RSRZ > 2$). Stretches of 2 or more consecutive residues without any outlier are shown as a green connector. Residues present in the sample, but not in the model, are shown in grey.

Note EDS was not executed.

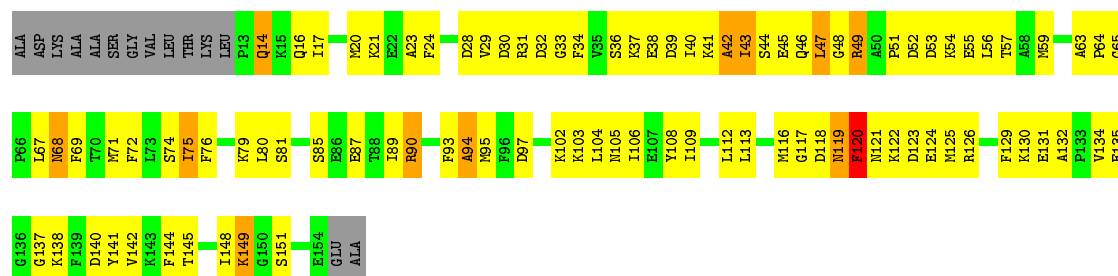
• Molecule 1: MYOSIN HEAVY CHAIN





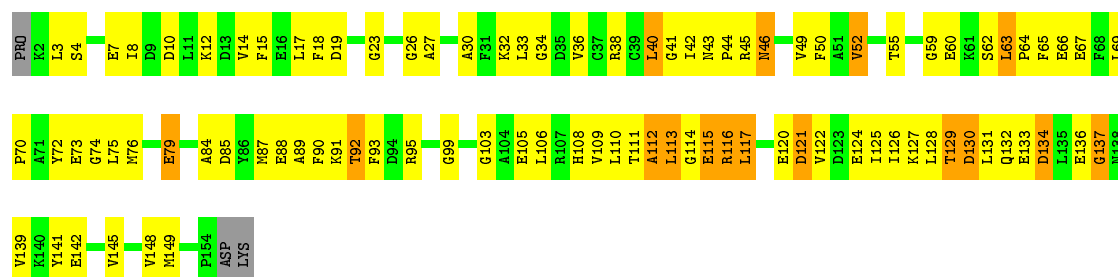
• Molecule 2: MYOSIN REGULATORY LIGHT CHAIN

Chain B: 31% 53% 7% 9%



• Molecule 3: MYOSIN ESSENTIAL LIGHT CHAIN

Chain C: 38% 49% 10%



4 Data and refinement statistics

Xtriage (Phenix) and EDS were not executed - this section will therefore be incomplete.

Property	Value	Source
Space group	P 1	Depositor
Cell constants a, b, c, α , β , γ	51.82Å 57.03Å 151.71Å 95.16° 96.45° 100.93°	Depositor
Resolution (Å)	36.87 – 3.80	Depositor
% Data completeness (in resolution range)	78.8 (36.87-3.80)	Depositor
R_{merge}	(Not available)	Depositor
R_{sym}	0.08	Depositor
Refinement program	CNS 0.9	Depositor
R, R_{free}	0.238 , 0.328	Depositor
Estimated twinning fraction	No twinning to report.	Xtriage
Total number of atoms	8108	wwPDB-VP
Average B, all atoms (Å ²)	53.0	wwPDB-VP

5 Model quality [i](#)

5.1 Standard geometry [i](#)

Bond lengths and bond angles in the following residue types are not validated in this section: MG, AGS, CA, PDM

The Z score for a bond length (or angle) is the number of standard deviations the observed value is removed from the expected value. A bond length (or angle) with $|Z| > 5$ is considered an outlier worth inspection. RMSZ is the root-mean-square of all Z scores of the bond lengths (or angles).

Mol	Chain	Bond lengths		Bond angles	
		RMSZ	$\# Z > 5$	RMSZ	$\# Z > 5$
1	A	0.53	0/5980	0.87	21/8106 (0.3%)
2	B	0.51	0/1048	0.73	1/1415 (0.1%)
3	C	0.49	0/1169	0.72	1/1582 (0.1%)
All	All	0.52	0/8197	0.83	23/11103 (0.2%)

There are no bond length outliers.

The worst 5 of 23 bond angle outliers are listed below:

Mol	Chain	Res	Type	Atoms	Z	Observed(°)	Ideal(°)
1	A	646	SER	N-CA-C	-9.09	86.46	111.00
1	A	644	THR	N-CA-C	8.67	134.41	111.00
1	A	539	PHE	CA-CB-CG	7.81	132.64	113.90
1	A	22	LYS	N-CA-C	7.52	131.29	111.00
1	A	216	GLU	N-CA-C	-7.51	90.73	111.00

There are no chirality outliers.

There are no planarity outliers.

5.2 Too-close contacts [i](#)

In the following table, the Non-H and H(model) columns list the number of non-hydrogen atoms and hydrogen atoms in the chain respectively. The H(added) column lists the number of hydrogen atoms added and optimized by MolProbity. The Clashes column lists the number of clashes within the asymmetric unit, whereas Symm-Clashes lists symmetry related clashes.

Mol	Chain	Non-H	H(model)	H(added)	Clashes	Symm-Clashes
1	A	5867	0	5467	642	0
2	B	1032	0	907	112	0
3	C	1148	0	1032	128	0

Continued on next page...

Continued from previous page...

Mol	Chain	Non-H	H(model)	H(added)	Clashes	Symm-Clashes
4	C	1	0	0	0	0
5	A	1	0	0	0	0
5	C	1	0	0	0	0
6	A	31	0	12	6	0
7	A	21	0	10	10	0
8	A	3	0	0	4	0
8	B	1	0	0	1	0
8	C	2	0	0	0	0
All	All	8108	0	7428	842	0

The all-atom clashscore is defined as the number of clashes found per 1000 atoms (including hydrogen atoms). The all-atom clashscore for this structure is 54.

The worst 5 of 842 close contacts within the same asymmetric unit are listed below, sorted by their clash magnitude.

Atom-1	Atom-2	Interatomic distance (Å)	Clash overlap (Å)
1:A:697:LEU:HA	1:A:704:ARG:HH21	1.02	1.12
1:A:187:LYS:HE2	1:A:223:ASN:HD22	1.13	1.11
1:A:693:CYS:HB2	7:A:900:PDM:OP3	1.48	1.11
1:A:644:THR:CG2	1:A:645:ILE:HG13	1.86	1.05
2:B:43:ILE:O	2:B:47:LEU:HB2	1.57	1.04

There are no symmetry-related clashes.

5.3 Torsion angles [i](#)

5.3.1 Protein backbone [i](#)

In the following table, the Percentiles column shows the percent Ramachandran outliers of the chain as a percentile score with respect to all X-ray entries followed by that with respect to entries of similar resolution.

The Analysed column shows the number of residues for which the backbone conformation was analysed, and the total number of residues.

Mol	Chain	Analysed	Favoured	Allowed	Outliers	Percentiles	
1	A	764/835 (92%)	505 (66%)	197 (26%)	62 (8%)	1	18
2	B	140/156 (90%)	90 (64%)	40 (29%)	10 (7%)	1	23
3	C	151/156 (97%)	98 (65%)	41 (27%)	12 (8%)	1	19

Continued on next page...

Continued from previous page...

Mol	Chain	Analysed	Favoured	Allowed	Outliers	Percentiles	
All	All	1055/1147 (92%)	693 (66%)	278 (26%)	84 (8%)	1	19

5 of 84 Ramachandran outliers are listed below:

Mol	Chain	Res	Type
1	A	88	MET
1	A	235	THR
1	A	389	ILE
1	A	418	GLN
1	A	607	VAL

5.3.2 Protein sidechains ⓘ

In the following table, the Percentiles column shows the percent sidechain outliers of the chain as a percentile score with respect to all X-ray entries followed by that with respect to entries of similar resolution.

The Analysed column shows the number of residues for which the sidechain conformation was analysed, and the total number of residues.

Mol	Chain	Analysed	Rotameric	Outliers	Percentiles	
1	A	577/728 (79%)	508 (88%)	69 (12%)	6	34
2	B	98/133 (74%)	88 (90%)	10 (10%)	9	43
3	C	114/132 (86%)	105 (92%)	9 (8%)	15	55
All	All	789/993 (80%)	701 (89%)	88 (11%)	7	38

5 of 88 residues with a non-rotameric sidechain are listed below:

Mol	Chain	Res	Type
1	A	333	GLU
1	A	502	LYS
3	C	52	VAL
1	A	337	ILE
1	A	452	ARG

Some sidechains can be flipped to improve hydrogen bonding and reduce clashes. 5 of 34 such sidechains are listed below:

Mol	Chain	Res	Type
1	A	436	ASN
1	A	485	GLN

Continued on next page...

Continued from previous page...

Mol	Chain	Res	Type
2	B	99	GLN
1	A	453	ASN
1	A	161	GLN

5.3.3 RNA ⓘ

There are no RNA molecules in this entry.

5.4 Non-standard residues in protein, DNA, RNA chains ⓘ

There are no non-standard protein/DNA/RNA residues in this entry.

5.5 Carbohydrates ⓘ

There are no carbohydrates in this entry.

5.6 Ligand geometry ⓘ

Of 5 ligands modelled in this entry, 3 are monoatomic - leaving 2 for Mogul analysis.

In the following table, the Counts columns list the number of bonds (or angles) for which Mogul statistics could be retrieved, the number of bonds (or angles) that are observed in the model and the number of bonds (or angles) that are defined in the chemical component dictionary. The Link column lists molecule types, if any, to which the group is linked. The Z score for a bond length (or angle) is the number of standard deviations the observed value is removed from the expected value. A bond length (or angle) with $|Z| > 2$ is considered an outlier worth inspection. RMSZ is the root-mean-square of all Z scores of the bond lengths (or angles).

Mol	Type	Chain	Res	Link	Bond lengths			Bond angles		
					Counts	RMSZ	$\# Z > 2$	Counts	RMSZ	$\# Z > 2$
7	PDM	A	900	1	18,22,22	3.63	7 (38%)	26,30,30	2.11	3 (11%)
6	AGS	A	999	1,5	24,33,33	1.96	6 (25%)	28,52,52	1.32	3 (10%)

In the following table, the Chirals column lists the number of chiral outliers, the number of chiral centers analysed, the number of these observed in the model and the number defined in the chemical component dictionary. Similar counts are reported in the Torsion and Rings columns. '-' means no outliers of that kind were identified.

Mol	Type	Chain	Res	Link	Chirals	Torsions	Rings
7	PDM	A	900	1	1/1/5/6	0/10/26/26	0/2/2/2

Continued on next page...

Continued from previous page...

Mol	Type	Chain	Res	Link	Chirals	Torsions	Rings
6	AGS	A	999	1,5	-	0/15/38/38	0/3/3/3

The worst 5 of 13 bond length outliers are listed below:

Mol	Chain	Res	Type	Atoms	Z	Observed(Å)	Ideal(Å)
7	A	900	PDM	OP3-CP7	-9.03	1.24	1.40
7	A	900	PDM	CP7-NP2	-8.54	1.34	1.43
6	A	999	AGS	O5'-C5'	-4.27	1.27	1.44
7	A	900	PDM	C13-C12	-4.25	1.41	1.52
7	A	900	PDM	C14-NP1	-3.79	1.35	1.40

The worst 5 of 6 bond angle outliers are listed below:

Mol	Chain	Res	Type	Atoms	Z	Observed(°)	Ideal(°)
6	A	999	AGS	O3G-PG-O3B	2.35	115.77	105.09
6	A	999	AGS	C4-C5-N7	2.84	112.09	109.48
6	A	999	AGS	O4'-C4'-C5'	3.72	122.61	109.32
7	A	900	PDM	CP8-CP7-NP2	4.56	116.89	110.41
7	A	900	PDM	OP3-CP7-CP8	5.30	121.14	109.35

All (1) chirality outliers are listed below:

Mol	Chain	Res	Type	Atom
7	A	900	PDM	CP7

There are no torsion outliers.

There are no ring outliers.

2 monomers are involved in 16 short contacts:

Mol	Chain	Res	Type	Clashes	Symm-Clashes
7	A	900	PDM	10	0
6	A	999	AGS	6	0

5.7 Other polymers

There are no such residues in this entry.

5.8 Polymer linkage issues ⓘ

There are no chain breaks in this entry.

6 Fit of model and data ⓘ

6.1 Protein, DNA and RNA chains ⓘ

EDS was not executed - this section will therefore be empty.

6.2 Non-standard residues in protein, DNA, RNA chains ⓘ

EDS was not executed - this section will therefore be empty.

6.3 Carbohydrates ⓘ

EDS was not executed - this section will therefore be empty.

6.4 Ligands ⓘ

EDS was not executed - this section will therefore be empty.

6.5 Other polymers ⓘ

EDS was not executed - this section will therefore be empty.