



Full wwPDB X-ray Structure Validation Report ⓘ

Feb 1, 2016 – 10:08 AM GMT

PDB ID : 3KYR
Title : Bace-1 in complex with a norstatine type inhibitor
Authors : Lindberg, J.D.; Borkakoti, N.; Derbyshire, D.; Nystrom, S.
Deposited on : 2009-12-07
Resolution : 2.60 Å(reported)

This is a Full wwPDB X-ray Structure Validation Report for a publicly released PDB entry.
We welcome your comments at validation@mail.wwpdb.org
A user guide is available at
<http://wwpdb.org/validation/2016/XrayValidationReportHelp>
with specific help available everywhere you see the ⓘ symbol.

The following versions of software and data (see [references ⓘ](#)) were used in the production of this report:

MolProbity : 4.02b-467
Mogul : 1.7 (RC4), CSD as536be (2015)
Xtriage (Phenix) : 1.9-1692
EDS : rb-20026688
Percentile statistics : 20151230.v01 (using entries in the PDB archive December 30th 2015)
Refmac : 5.8.0135
CCP4 : 6.5.0
Ideal geometry (proteins) : Engh & Huber (2001)
Ideal geometry (DNA, RNA) : Parkinson et al. (1996)
Validation Pipeline (wwPDB-VP) : trunk26865

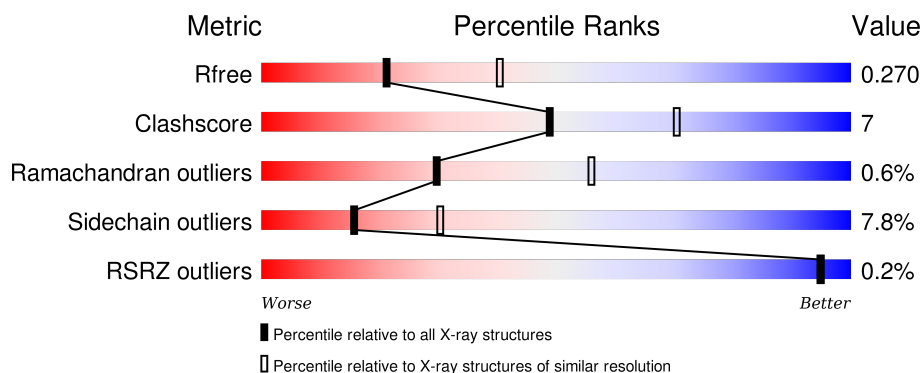
1 Overall quality at a glance

The following experimental techniques were used to determine the structure:

X-RAY DIFFRACTION




The reported resolution of this entry is 2.60 Å.

Percentile scores (ranging between 0-100) for global validation metrics of the entry are shown in the following graphic. The table shows the number of entries on which the scores are based.



Metric	Whole archive (#Entries)	Similar resolution (#Entries, resolution range(Å))
R_{free}	91344	2328 (2.60-2.60)
Clashscore	102246	2679 (2.60-2.60)
Ramachandran outliers	100387	2635 (2.60-2.60)
Sidechain outliers	100360	2635 (2.60-2.60)
RSRZ outliers	91569	2334 (2.60-2.60)

The table below summarises the geometric issues observed across the polymeric chains and their fit to the electron density. The red, orange, yellow and green segments on the lower bar indicate the fraction of residues that contain outliers for ≥ 3 , 2, 1 and 0 types of geometric quality criteria. A grey segment represents the fraction of residues that are not modelled. The numeric value for each fraction is indicated below the corresponding segment, with a dot representing fractions $\leq 5\%$. The upper red bar (where present) indicates the fraction of residues that have poor fit to the electron density. The numeric value is given above the bar.

Mol	Chain	Length	Quality of chain
1	A	405	 71% 17% • 10%
1	B	405	 72% 16% • 10%
1	C	405	 69% 18% • 11%

2 Entry composition ⓘ

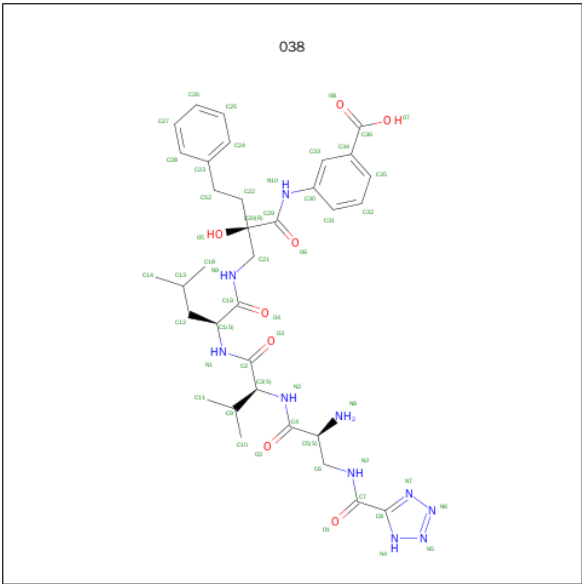
There are 3 unique types of molecules in this entry. The entry contains 8802 atoms, of which 0 are hydrogens and 0 are deuteriums.

In the tables below, the ZeroOcc column contains the number of atoms modelled with zero occupancy, the AltConf column contains the number of residues with at least one atom in alternate conformation and the Trace column contains the number of residues modelled with at most 2 atoms.

- Molecule 1 is a protein called Beta-secretase 1.

Mol	Chain	Residues	Atoms					ZeroOcc	AltConf	Trace
1	A	365	Total	C	N	O	S	0	0	0
			2872	1841	478	539	14			
1	B	363	Total	C	N	O	S	0	0	0
			2857	1829	476	538	14			
1	C	360	Total	C	N	O	S	0	0	0
			2841	1824	474	529	14			

- Molecule 2 is 3-[[[(2S)-2-[[[(2S)-2-[[[(2S)-2-AZANYL-3-(1H-1,2,3,4-TETRAZOL-5-YL CARBONYLAMINO)PROPANOYL]AMINO]-3-METHYL-BUTANOYL]AMINO]-4-MET HYL-PENTANOYL]AMINO]METHYL]-2-HYDROXY-4-PHENYL-BUTANOYL]AMINO] BENZOIC ACID (three-letter code: 038) (formula: C₃₄H₄₆N₁₀O₈).



Mol	Chain	Residues	Atoms				ZeroOcc	AltConf
2	A	1	Total	C	N	O	0	0
			52	34	10	8		
2	B	1	Total	C	N	O	0	0
			52	34	10	8		

Continued on next page...

Continued from previous page...

Mol	Chain	Residues	Atoms				ZeroOcc	AltConf
2	C	1	Total	C	N	O	0	0
			52	34	10	8		

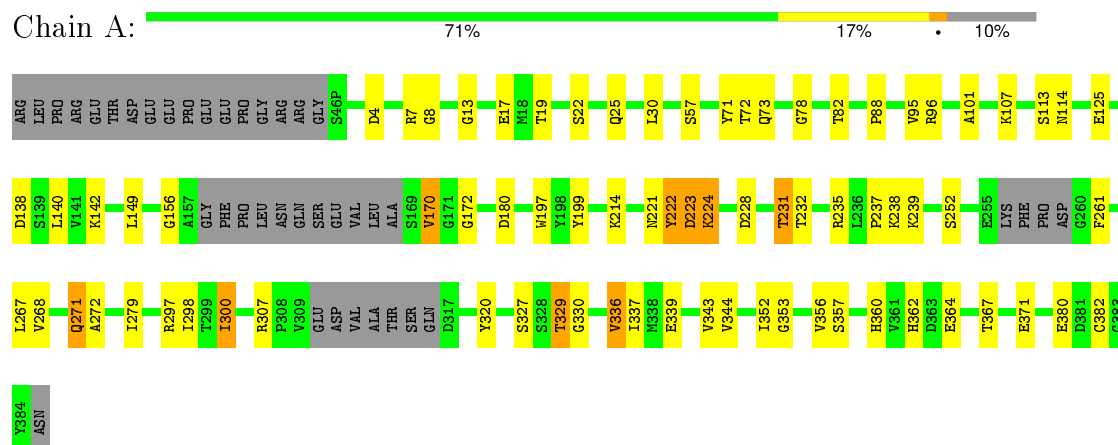
- Molecule 3 is water.

Mol	Chain	Residues	Atoms		ZeroOcc	AltConf
3	A	24	Total	O	0	0
			24	24		
3	B	26	Total	O	0	0
			26	26		
3	C	26	Total	O	0	0
			26	26		

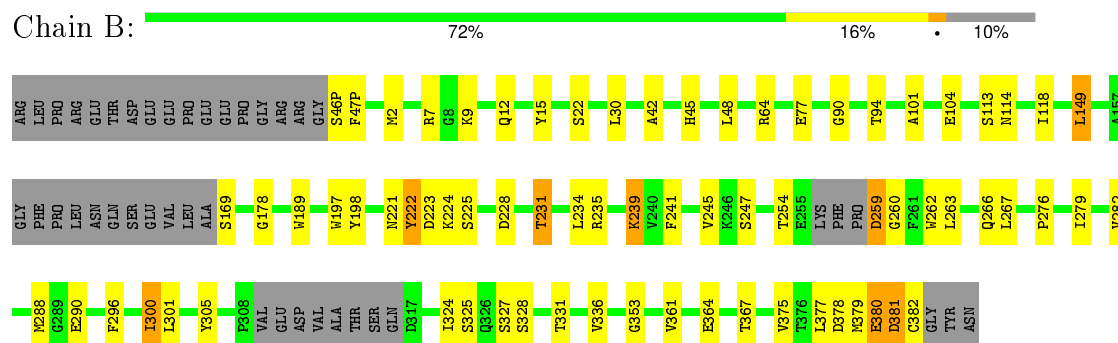
3 Residue-property plots

These plots are drawn for all protein, RNA and DNA chains in the entry. The first graphic for a chain summarises the proportions of errors displayed in the second graphic. The second graphic shows the sequence view annotated by issues in geometry and electron density. Residues are color-coded according to the number of geometric quality criteria for which they contain at least one outlier: green = 0, yellow = 1, orange = 2 and red = 3 or more. A red dot above a residue indicates a poor fit to the electron density ($RSRZ > 2$). Stretches of 2 or more consecutive residues without any outlier are shown as a green connector. Residues present in the sample, but not in the model, are shown in grey.

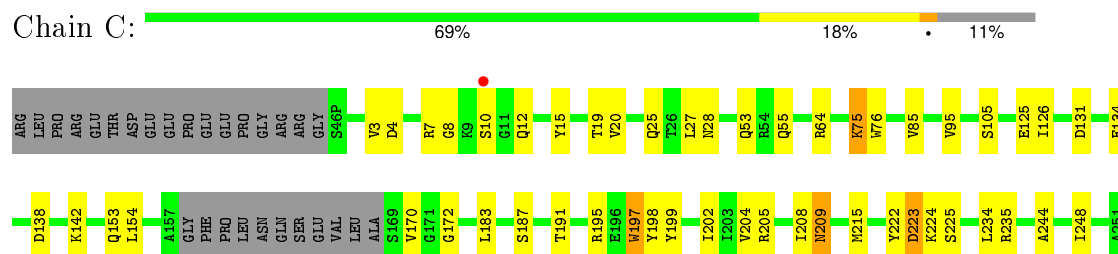
• Molecule 1: Beta-secretase 1



• Molecule 1: Beta-secretase 1



• Molecule 1: Beta-secretase 1





4 Data and refinement statistics

Property	Value	Source
Space group	P 1 21 1	Depositor
Cell constants a, b, c, α , β , γ	81.76Å 102.77Å 101.43Å 90.00° 102.90° 90.00°	Depositor
Resolution (Å)	99.01 – 2.60 98.87 – 2.60	Depositor EDS
% Data completeness (in resolution range)	100.0 (99.01-2.60) 91.1 (98.87-2.60)	Depositor EDS
R_{merge}	0.11	Depositor
R_{sym}	0.11	Depositor
$\langle I/\sigma(I) \rangle$ ¹	2.94 (at 2.62Å)	Xtriage
Refinement program	REFMAC 5.2.0019	Depositor
R, R_{free}	0.207 , 0.269 0.208 , 0.270	Depositor DCC
R_{free} test set	2320 reflections (5.32%)	DCC
Wilson B-factor (Å ²)	29.0	Xtriage
Anisotropy	0.111	Xtriage
Bulk solvent k_{sol} (e/Å ³), B_{sol} (Å ²)	0.36 , 39.5	EDS
Estimated twinning fraction	No twinning to report.	Xtriage
L-test for twinning ²	$\langle L \rangle = 0.49$, $\langle L^2 \rangle = 0.33$	Xtriage
Outliers	0 of 45951 reflections	Xtriage
F_o, F_c correlation	0.92	EDS
Total number of atoms	8802	wwPDB-VP
Average B, all atoms (Å ²)	24.0	wwPDB-VP

Xtriage's analysis on translational NCS is as follows: *The largest off-origin peak in the Patterson function is 3.98% of the height of the origin peak. No significant pseudotranslation is detected.*

¹Intensities estimated from amplitudes.

²Theoretical values of $\langle |L| \rangle$, $\langle L^2 \rangle$ for acentric reflections are 0.5, 0.375 respectively for untwinned datasets, and 0.333, 0.2 for perfectly twinned datasets.

5 Model quality [i](#)

5.1 Standard geometry [i](#)

Bond lengths and bond angles in the following residue types are not validated in this section: 038

The Z score for a bond length (or angle) is the number of standard deviations the observed value is removed from the expected value. A bond length (or angle) with $|Z| > 5$ is considered an outlier worth inspection. RMSZ is the root-mean-square of all Z scores of the bond lengths (or angles).

Mol	Chain	Bond lengths		Bond angles	
		RMSZ	$\# Z > 5$	RMSZ	$\# Z > 5$
1	A	0.78	1/2943 (0.0%)	0.78	0/3996
1	B	0.77	0/2927	0.79	1/3974 (0.0%)
1	C	0.77	0/2912	0.79	1/3953 (0.0%)
All	All	0.77	1/8782 (0.0%)	0.79	2/11923 (0.0%)

All (1) bond length outliers are listed below:

Mol	Chain	Res	Type	Atoms	Z	Observed(Å)	Ideal(Å)
1	A	382	CYS	CB-SG	-5.91	1.72	1.81

All (2) bond angle outliers are listed below:

Mol	Chain	Res	Type	Atoms	Z	Observed(°)	Ideal(°)
1	B	149	LEU	CA-CB-CG	7.22	131.90	115.30
1	C	131	ASP	CB-CG-OD1	5.13	122.92	118.30

There are no chirality outliers.

There are no planarity outliers.

5.2 Too-close contacts [i](#)

In the following table, the Non-H and H(model) columns list the number of non-hydrogen atoms and hydrogen atoms in the chain respectively. The H(added) column lists the number of hydrogen atoms added and optimized by MolProbity. The Clashes column lists the number of clashes within the asymmetric unit, whereas Symm-Clashes lists symmetry related clashes.

Mol	Chain	Non-H	H(model)	H(added)	Clashes	Symm-Clashes
1	A	2872	0	2790	42	0
1	B	2857	0	2773	36	0

Continued on next page...

Continued from previous page...

Mol	Chain	Non-H	H(model)	H(added)	Clashes	Symm-Clashes
1	C	2841	0	2768	41	0
2	A	52	0	45	1	0
2	B	52	0	45	1	0
2	C	52	0	45	2	0
3	A	24	0	0	2	0
3	B	26	0	0	4	0
3	C	26	0	0	1	0
All	All	8802	0	8466	122	0

The all-atom clashscore is defined as the number of clashes found per 1000 atoms (including hydrogen atoms). The all-atom clashscore for this structure is 7.

All (122) close contacts within the same asymmetric unit are listed below, sorted by their clash magnitude.

Atom-1	Atom-2	Interatomic distance (Å)	Clash overlap (Å)
1:A:8:GLY:HA3	1:A:170:VAL:HG12	1.40	1.03
2:C:500:038:O6	2:C:500:038:H33	1.57	1.03
1:A:8:GLY:CA	1:A:170:VAL:HG12	1.93	0.99
1:C:269:CYS:HG	1:C:319:CYS:HG	1.19	0.91
1:C:295:SER:HB3	1:C:379:MET:CE	2.02	0.89
1:A:8:GLY:HA3	1:A:170:VAL:CG1	2.07	0.83
1:B:381:ASP:N	1:B:381:ASP:OD1	2.15	0.79
1:A:224:LYS:HE2	1:A:329:THR:HG21	1.65	0.77
1:C:204:VAL:HG11	1:C:379:MET:HG2	1.67	0.74
1:C:235:ARG:HB3	1:C:327:SER:HB2	1.69	0.74
1:C:75:LYS:HE2	3:C:403:HOH:O	1.87	0.74
2:C:500:038:O6	2:C:500:038:C33	2.32	0.73
1:B:260:GLY:HA3	1:B:266:GLN:HE21	1.54	0.71
1:C:295:SER:HB3	1:C:379:MET:HE1	1.72	0.70
1:A:73:GLN:O	1:A:73:GLN:HG2	1.91	0.68
1:A:235:ARG:HB3	1:A:327:SER:HB2	1.78	0.66
1:B:241:PHE:O	1:B:245:VAL:HG23	1.94	0.66
1:A:222:TYR:O	1:A:223:ASP:CB	2.44	0.65
1:C:125:GLU:OE2	1:C:195:ARG:NH2	2.29	0.65
1:B:231:THR:CG2	3:B:391:HOH:O	2.47	0.62
2:A:500:038:O6	2:A:500:038:H33	2.00	0.60
1:B:228:ASP:OD2	1:B:231:THR:HB	2.01	0.60
1:A:199:TYR:HB3	1:A:352:ILE:HD11	1.83	0.59
1:C:278:ASN:HD22	1:C:278:ASN:N	2.01	0.59
1:C:244:ALA:O	1:C:248:ILE:HG13	2.04	0.57
1:B:231:THR:HG21	3:B:391:HOH:O	2.04	0.57

Continued on next page...

Continued from previous page...

Atom-1	Atom-2	Interatomic distance (Å)	Clash overlap (Å)
1:C:288:MET:HE2	1:C:379:MET:HB3	1.86	0.57
1:B:42:ALA:CB	1:B:101:ALA:HB1	2.34	0.56
1:C:222:TYR:O	1:C:223:ASP:HB3	2.06	0.56
1:A:222:TYR:O	1:A:223:ASP:HB2	2.06	0.56
1:A:300:ILE:HD12	1:A:337:ILE:CD1	2.36	0.56
1:A:261:PHE:CE1	1:A:268:VAL:HG22	2.41	0.56
1:A:95:VAL:HG11	1:A:140:LEU:HA	1.88	0.55
1:A:232:THR:O	1:A:336:VAL:HB	2.06	0.55
1:C:198:TYR:CE1	1:C:224:LYS:HE3	2.41	0.55
1:B:288:MET:HE1	1:B:379:MET:HA	1.88	0.55
1:B:282:VAL:HG12	1:B:301:LEU:HD23	1.87	0.55
1:A:8:GLY:N	1:A:170:VAL:HG12	2.22	0.54
1:A:252:SER:HB2	1:A:279:ILE:HD12	1.88	0.54
1:B:7:ARG:HB2	1:B:15:TYR:CE1	2.42	0.54
1:B:30:LEU:HD23	1:B:118:ILE:HD12	1.89	0.54
1:B:259:ASP:OD1	1:B:259:ASP:N	2.42	0.53
1:B:260:GLY:HA3	1:B:266:GLN:NE2	2.23	0.53
1:B:221:ASN:O	1:B:222:TYR:C	2.47	0.52
1:B:222:TYR:CG	1:B:223:ASP:N	2.76	0.51
1:B:225:SER:HA	1:B:331:THR:O	2.11	0.51
1:A:7:ARG:CG	3:A:402:HOH:O	2.59	0.50
1:C:199:TYR:HB3	1:C:352:ILE:HD11	1.94	0.50
1:A:180:ASP:OD2	1:B:77:GLU:OE2	2.29	0.50
1:C:307:ARG:HG2	1:C:323:ALA:HB2	1.94	0.49
1:B:198:TYR:CE1	1:B:224:LYS:HE3	2.48	0.49
1:C:225:SER:HA	1:C:331:THR:O	2.13	0.49
1:C:202:ILE:HD12	1:C:288:MET:HE3	1.95	0.49
1:B:46(P):SER:HA	3:B:411:HOH:O	2.12	0.49
1:B:276:PRO:O	1:B:279:ILE:HG12	2.12	0.48
2:B:500:038:H33	2:B:500:038:O6	2.12	0.48
1:B:189:TRP:O	1:B:353:GLY:HA2	2.13	0.48
1:C:20:VAL:HG12	1:C:85:VAL:HG22	1.94	0.48
1:A:7:ARG:HG2	3:A:402:HOH:O	2.13	0.48
1:A:344:VAL:O	1:A:352:ILE:HA	2.14	0.48
1:A:13:GLY:HA3	1:A:30:LEU:HD11	1.96	0.48
1:B:290:GLU:HB2	3:B:408:HOH:O	2.14	0.48
1:A:78:GLY:HA3	1:A:101:ALA:O	2.13	0.47
1:A:297:ARG:NH2	1:A:371:GLU:OE1	2.46	0.47
1:A:221:ASN:O	1:A:223:ASP:N	2.48	0.47
1:A:224:LYS:CE	1:A:329:THR:HG21	2.41	0.46
1:C:301:LEU:HB3	1:C:302:PRO:HD2	1.97	0.46

Continued on next page...

Continued from previous page...

Atom-1	Atom-2	Interatomic distance (Å)	Clash overlap (Å)
1:C:280:PHE:HB3	1:C:302:PRO:HB3	1.98	0.45
1:A:156:GLY:HA3	1:A:339:GLU:OE2	2.16	0.45
1:B:45:HIS:HB3	1:B:48:LEU:HG	1.99	0.45
1:A:297:ARG:NE	1:A:371:GLU:OE1	2.48	0.45
1:C:208:ILE:O	1:C:209:ASN:ND2	2.46	0.45
1:B:239:LYS:HA	1:B:239:LYS:HD3	1.57	0.45
1:C:302:PRO:HA	1:C:305:TYR:CE2	2.52	0.45
1:C:154:LEU:O	1:C:339:GLU:HA	2.17	0.44
1:A:228:ASP:OD2	1:A:231:THR:HB	2.18	0.44
1:A:17:GLU:HG2	1:A:88:PRO:HG2	1.99	0.44
1:C:205:ARG:HB2	1:C:286:TYR:CD1	2.53	0.44
1:B:47(P):PHE:CZ	1:B:178:GLY:HA3	2.52	0.44
1:B:235:ARG:HA	1:B:325:SER:O	2.18	0.44
1:A:223:ASP:OD2	1:A:329:THR:HG22	2.18	0.44
1:C:380:GLU:H	1:C:380:GLU:HG2	1.58	0.44
1:C:222:TYR:O	1:C:223:ASP:CB	2.65	0.43
1:C:270:TRP:CE3	1:C:275:THR:HG23	2.53	0.43
1:C:8:GLY:HA3	1:C:170:VAL:HG23	2.00	0.43
1:C:76:TRP:HA	1:C:105:SER:HA	2.00	0.43
1:B:235:ARG:HB3	1:B:327:SER:HB2	2.00	0.43
1:C:15:TYR:CD1	1:C:28:ASN:HB3	2.52	0.43
1:A:343:VAL:HA	1:A:353:GLY:O	2.18	0.43
1:B:259:ASP:HA	1:B:262:TRP:HD1	1.83	0.43
1:B:2:MET:HG2	1:B:90:GLY:HA2	2.01	0.43
1:C:153:GLN:OE1	1:C:183:LEU:HD22	2.19	0.42
1:C:295:SER:HB3	1:C:379:MET:HE3	1.94	0.42
1:B:300:ILE:HD11	1:B:305:TYR:HD2	1.84	0.42
1:A:82:THR:OG1	1:A:96:ARG:NH1	2.52	0.42
1:C:300:ILE:HD13	1:C:337:ILE:HD13	2.00	0.42
1:C:126:ILE:HG23	1:C:197:TRP:HB2	2.01	0.42
1:A:125:GLU:O	1:A:125:GLU:HG3	2.18	0.42
1:C:3:VAL:O	1:C:4:ASP:HB2	2.18	0.42
1:A:271:GLN:O	1:A:272:ALA:C	2.56	0.42
1:A:22:SER:O	1:A:57:SER:HA	2.20	0.42
1:A:307:ARG:O	1:A:320:TYR:HA	2.20	0.42
1:A:237:PRO:HG3	1:A:330:GLY:HA2	2.02	0.41
1:C:19:THR:HA	1:C:25:GLN:O	2.19	0.41
1:C:234:LEU:HD22	1:C:337:ILE:HD11	2.01	0.41
1:B:12:GLN:HE21	1:B:113:SER:HA	1.84	0.41
1:B:288:MET:HE2	1:B:378:ASP:C	2.40	0.41
1:C:4:ASP:HA	1:C:172:GLY:O	2.21	0.41

Continued on next page...

Continued from previous page...

Atom-1	Atom-2	Interatomic distance (Å)	Clash overlap (Å)
1:B:234:LEU:O	1:B:324:ILE:HA	2.19	0.41
1:A:19:THR:HA	1:A:25:GLN:O	2.21	0.41
1:C:204:VAL:HG21	1:C:379:MET:HE2	2.02	0.41
1:C:53:GLN:HE21	1:C:55:GLN:NE2	2.18	0.41
1:C:298:ILE:O	1:C:298:ILE:HG13	2.21	0.41
1:A:71:TYR:O	1:A:72:THR:C	2.59	0.41
1:B:380:GLU:N	1:B:380:GLU:CD	2.74	0.41
1:A:231:THR:HG21	1:A:235:ARG:HH11	1.85	0.40
1:B:288:MET:CE	1:B:379:MET:N	2.84	0.40
1:C:134:GLU:OE2	1:C:142:LYS:HD3	2.22	0.40
1:A:113:SER:O	1:A:114:ASN:HB3	2.21	0.40
1:A:357:SER:O	1:A:360:HIS:HB3	2.21	0.40
1:B:189:TRP:HB3	1:B:296:PHE:CD1	2.57	0.40
1:A:4:ASP:HA	1:A:172:GLY:O	2.21	0.40

There are no symmetry-related clashes.

5.3 Torsion angles [i](#)

5.3.1 Protein backbone [i](#)

In the following table, the Percentiles column shows the percent Ramachandran outliers of the chain as a percentile score with respect to all X-ray entries followed by that with respect to entries of similar resolution.

The Analysed column shows the number of residues for which the backbone conformation was analysed, and the total number of residues.

Mol	Chain	Analysed	Favoured	Allowed	Outliers	Percentiles	
1	A	357/405 (88%)	341 (96%)	13 (4%)	3 (1%)	24	46
1	B	355/405 (88%)	333 (94%)	21 (6%)	1 (0%)	46	72
1	C	352/405 (87%)	325 (92%)	25 (7%)	2 (1%)	30	56
All	All	1064/1215 (88%)	999 (94%)	59 (6%)	6 (1%)	30	56

All (6) Ramachandran outliers are listed below:

Mol	Chain	Res	Type
1	A	223	ASP
1	B	222	TYR
1	A	222	TYR

Continued on next page...

Continued from previous page...

Mol	Chain	Res	Type
1	C	223	ASP
1	C	277	TRP
1	A	238	LYS

5.3.2 Protein sidechains ⓘ

In the following table, the Percentiles column shows the percent sidechain outliers of the chain as a percentile score with respect to all X-ray entries followed by that with respect to entries of similar resolution.

The Analysed column shows the number of residues for which the sidechain conformation was analysed, and the total number of residues.

Mol	Chain	Analysed	Rotameric	Outliers	Percentiles	
1	A	311/346 (90%)	290 (93%)	21 (7%)	20	39
1	B	310/346 (90%)	283 (91%)	27 (9%)	13	24
1	C	307/346 (89%)	283 (92%)	24 (8%)	16	30
All	All	928/1038 (89%)	856 (92%)	72 (8%)	16	30

All (72) residues with a non-rotameric sidechain are listed below:

Mol	Chain	Res	Type
1	A	107	LYS
1	A	138	ASP
1	A	142	LYS
1	A	149	LEU
1	A	170	VAL
1	A	197	TRP
1	A	214	LYS
1	A	224	LYS
1	A	231	THR
1	A	239	LYS
1	A	267	LEU
1	A	271	GLN
1	A	298	ILE
1	A	300	ILE
1	A	329	THR
1	A	336	VAL
1	A	356	VAL
1	A	362	HIS
1	A	364	GLU

Continued on next page...

Continued from previous page...

Mol	Chain	Res	Type
1	A	367	THR
1	A	380	GLU
1	B	9	LYS
1	B	22	SER
1	B	64	ARG
1	B	94	THR
1	B	104	GLU
1	B	114	ASN
1	B	149	LEU
1	B	169	SER
1	B	197	TRP
1	B	231	THR
1	B	239	LYS
1	B	247	SER
1	B	254	THR
1	B	259	ASP
1	B	263	LEU
1	B	267	LEU
1	B	300	ILE
1	B	328	SER
1	B	336	VAL
1	B	361	VAL
1	B	364	GLU
1	B	367	THR
1	B	375	VAL
1	B	377	LEU
1	B	380	GLU
1	B	381	ASP
1	B	382	CYS
1	C	7	ARG
1	C	10	SER
1	C	12	GLN
1	C	27	LEU
1	C	64	ARG
1	C	75	LYS
1	C	95	VAL
1	C	138	ASP
1	C	187	SER
1	C	191	THR
1	C	197	TRP
1	C	209	ASN
1	C	215	MET

Continued on next page...

Continued from previous page...

Mol	Chain	Res	Type
1	C	269	CYS
1	C	275	THR
1	C	278	ASN
1	C	292	THR
1	C	304	GLN
1	C	328	SER
1	C	336	VAL
1	C	350	LYS
1	C	356	VAL
1	C	362	HIS
1	C	380	GLU

Some sidechains can be flipped to improve hydrogen bonding and reduce clashes. All (15) such sidechains are listed below:

Mol	Chain	Res	Type
1	A	28	ASN
1	A	181	HIS
1	A	266	GLN
1	A	293	ASN
1	B	12	GLN
1	B	28	ASN
1	B	266	GLN
1	B	326	GLN
1	C	28	ASN
1	C	53	GLN
1	C	73	GLN
1	C	278	ASN
1	C	293	ASN
1	C	326	GLN
1	C	360	HIS

5.3.3 RNA ⓘ

There are no RNA molecules in this entry.

5.4 Non-standard residues in protein, DNA, RNA chains ⓘ

There are no non-standard protein/DNA/RNA residues in this entry.

5.5 Carbohydrates [i](#)

There are no carbohydrates in this entry.

5.6 Ligand geometry [i](#)

3 ligands are modelled in this entry.

In the following table, the Counts columns list the number of bonds (or angles) for which Mogul statistics could be retrieved, the number of bonds (or angles) that are observed in the model and the number of bonds (or angles) that are defined in the chemical component dictionary. The Link column lists molecule types, if any, to which the group is linked. The Z score for a bond length (or angle) is the number of standard deviations the observed value is removed from the expected value. A bond length (or angle) with $|Z| > 2$ is considered an outlier worth inspection. RMSZ is the root-mean-square of all Z scores of the bond lengths (or angles).

Mol	Type	Chain	Res	Link	Bond lengths			Bond angles		
					Counts	RMSZ	$\# Z > 2$	Counts	RMSZ	$\# Z > 2$
2	038	A	500	-	48,54,54	2.40	5 (10%)	59,74,74	1.49	8 (13%)
2	038	B	500	-	48,54,54	2.21	5 (10%)	59,74,74	1.81	15 (25%)
2	038	C	500	-	48,54,54	2.43	7 (14%)	59,74,74	1.77	13 (22%)

In the following table, the Chirals column lists the number of chiral outliers, the number of chiral centers analysed, the number of these observed in the model and the number defined in the chemical component dictionary. Similar counts are reported in the Torsion and Rings columns. '-' means no outliers of that kind were identified.

Mol	Type	Chain	Res	Link	Chirals	Torsions	Rings
2	038	A	500	-	-	0/55/63/63	0/3/3/3
2	038	B	500	-	-	0/55/63/63	0/3/3/3
2	038	C	500	-	-	0/55/63/63	0/3/3/3

All (17) bond length outliers are listed below:

Mol	Chain	Res	Type	Atoms	Z	Observed(Å)	Ideal(Å)
2	A	500	038	C8-C7	-14.11	1.46	1.53
2	C	500	038	C8-C7	-12.71	1.47	1.53
2	B	500	038	C8-C7	-12.22	1.47	1.53
2	B	500	038	C4-N2	-3.35	1.26	1.34
2	A	500	038	C30-N10	-3.35	1.35	1.41
2	C	500	038	C30-N10	-3.21	1.35	1.41
2	C	500	038	C4-N2	-3.00	1.27	1.34
2	A	500	038	C4-N2	-2.80	1.27	1.34
2	C	500	038	C8-N7	2.26	1.36	1.34

Continued on next page...

Continued from previous page...

Mol	Chain	Res	Type	Atoms	Z	Observed(Å)	Ideal(Å)
2	C	500	038	C8-N4	2.31	1.36	1.34
2	B	500	038	C8-N4	2.34	1.36	1.34
2	A	500	038	N4-N5	3.46	1.40	1.34
2	B	500	038	N4-N5	4.04	1.41	1.34
2	A	500	038	N7-N6	4.28	1.41	1.34
2	B	500	038	N7-N6	4.42	1.41	1.34
2	C	500	038	N4-N5	5.38	1.43	1.34
2	C	500	038	N7-N6	5.83	1.43	1.34

All (36) bond angle outliers are listed below:

Mol	Chain	Res	Type	Atoms	Z	Observed(°)	Ideal(°)
2	C	500	038	O1-C7-C8	-5.83	113.13	121.01
2	B	500	038	N7-N6-N5	-4.28	107.12	109.59
2	C	500	038	C30-N10-C29	-4.06	119.12	126.72
2	B	500	038	O5-C20-C29	-4.05	101.43	109.05
2	A	500	038	N4-N5-N6	-3.81	107.40	109.59
2	C	500	038	O5-C20-C29	-3.75	102.00	109.05
2	B	500	038	O1-C7-C8	-3.41	116.39	121.01
2	A	500	038	C34-C33-C30	-3.34	118.41	121.52
2	B	500	038	C35-C34-C36	-3.14	116.23	120.45
2	A	500	038	O1-C7-C8	-3.05	116.89	121.01
2	C	500	038	C12-C1-C19	-2.72	103.51	110.60
2	B	500	038	C9-C3-N2	-2.68	104.30	111.36
2	B	500	038	N4-C8-N7	-2.56	109.38	111.69
2	B	500	038	O5-C20-C21	-2.54	102.55	108.29
2	C	500	038	N4-C8-N7	-2.42	109.51	111.69
2	A	500	038	N4-C8-N7	-2.42	109.51	111.69
2	C	500	038	N7-N6-N5	-2.38	108.22	109.59
2	C	500	038	N4-N5-N6	-2.26	108.29	109.59
2	B	500	038	C34-C33-C30	-2.22	119.45	121.52
2	B	500	038	C12-C1-C19	-2.16	104.96	110.60
2	C	500	038	C12-C1-N1	-2.04	105.39	110.49
2	B	500	038	C6-C5-N8	-2.02	106.37	109.56
2	C	500	038	C35-C34-C36	2.04	123.19	120.45
2	B	500	038	C35-C34-C33	2.19	121.07	118.17
2	C	500	038	C1-C19-N9	2.25	121.14	116.72
2	B	500	038	C21-C20-C29	2.41	116.63	110.29
2	A	500	038	C35-C34-C33	2.65	121.69	118.17
2	C	500	038	C8-N7-N6	2.76	106.85	104.59
2	A	500	038	C21-N9-C19	2.95	127.58	122.77
2	C	500	038	C8-N4-N5	3.11	107.14	104.59

Continued on next page...

Continued from previous page...

Mol	Chain	Res	Type	Atoms	Z	Observed(°)	Ideal(°)
2	A	500	038	C6-N3-C7	3.37	127.89	121.85
2	B	500	038	C8-N7-N6	3.66	107.58	104.59
2	B	500	038	C6-N3-C7	3.83	128.73	121.85
2	A	500	038	C8-N4-N5	3.83	107.73	104.59
2	B	500	038	C21-N9-C19	4.34	129.83	122.77
2	C	500	038	C6-N3-C7	4.64	130.19	121.85

There are no chirality outliers.

There are no torsion outliers.

There are no ring outliers.

3 monomers are involved in 4 short contacts:

Mol	Chain	Res	Type	Clashes	Symm-Clashes
2	A	500	038	1	0
2	B	500	038	1	0
2	C	500	038	2	0

5.7 Other polymers [i](#)

There are no such residues in this entry.

5.8 Polymer linkage issues [i](#)

There are no chain breaks in this entry.

6 Fit of model and data [i](#)

6.1 Protein, DNA and RNA chains [i](#)

In the following table, the column labelled ‘#RSRZ> 2’ contains the number (and percentage) of RSRZ outliers, followed by percent RSRZ outliers for the chain as percentile scores relative to all X-ray entries and entries of similar resolution. The OWAB column contains the minimum, median, 95th percentile and maximum values of the occupancy-weighted average B-factor per residue. The column labelled ‘Q< 0.9’ lists the number of (and percentage) of residues with an average occupancy less than 0.9.

Mol	Chain	Analysed	<RSRZ>	#RSRZ>2		OWAB(Å ²)	Q<0.9
1	A	365/405 (90%)	-0.07	0	100 100	7, 24, 40, 50	0
1	B	363/405 (89%)	-0.08	0	100 100	6, 21, 42, 53	0
1	C	360/405 (88%)	-0.01	2 (0%)	90 88	4, 23, 54, 64	0
All	All	1088/1215 (89%)	-0.06	2 (0%)	95 95	4, 22, 45, 64	0

All (2) RSRZ outliers are listed below:

Mol	Chain	Res	Type	RSRZ
1	C	361	VAL	2.5
1	C	10	SER	2.4

6.2 Non-standard residues in protein, DNA, RNA chains [i](#)

There are no non-standard protein/DNA/RNA residues in this entry.

6.3 Carbohydrates [i](#)

There are no carbohydrates in this entry.

6.4 Ligands [i](#)

In the following table, the Atoms column lists the number of modelled atoms in the group and the number defined in the chemical component dictionary. LLDF column lists the quality of electron density of the group with respect to its neighbouring residues in protein, DNA or RNA chains. The B-factors column lists the minimum, median, 95th percentile and maximum values of B factors of atoms in the group. The column labelled ‘Q< 0.9’ lists the number of atoms with occupancy less than 0.9.

Mol	Type	Chain	Res	Atoms	RSCC	RSR	LLDF	B-factors(\AA^2)	Q<0.9
2	038	C	500	52/52	0.92	0.21	1.41	4,24,52,54	0
2	038	A	500	52/52	0.95	0.21	0.89	8,16,38,40	0
2	038	B	500	52/52	0.96	0.17	0.29	7,17,36,38	0

6.5 Other polymers [i](#)

There are no such residues in this entry.