



Full wwPDB X-ray Structure Validation Report ⓘ

Feb 1, 2016 – 06:13 PM GMT

PDB ID : 4KZS
Title : Crystal structure of the secreted protein HP1454 from the human pathogen *Helicobacter pylori*
Authors : Quarantini, S.; Cendron, L.; Fischer, W.; Zanotti, G.
Deposited on : 2013-05-30
Resolution : 2.70 Å(reported)

This is a Full wwPDB X-ray Structure Validation Report for a publicly released PDB entry.
We welcome your comments at validation@mail.wwpdb.org
A user guide is available at
<http://wwpdb.org/validation/2016/XrayValidationReportHelp>
with specific help available everywhere you see the ⓘ symbol.

The following versions of software and data (see [references ⓘ](#)) were used in the production of this report:

MolProbity : 4.02b-467
Mogul : 1.7 (RC4), CSD as536be (2015)
Xtriage (Phenix) : 1.9-1692
EDS : rb-20026688
Percentile statistics : 20151230.v01 (using entries in the PDB archive December 30th 2015)
Refmac : 5.8.0135
CCP4 : 6.5.0
Ideal geometry (proteins) : Engh & Huber (2001)
Ideal geometry (DNA, RNA) : Parkinson et al. (1996)
Validation Pipeline (wwPDB-VP) : trunk26865

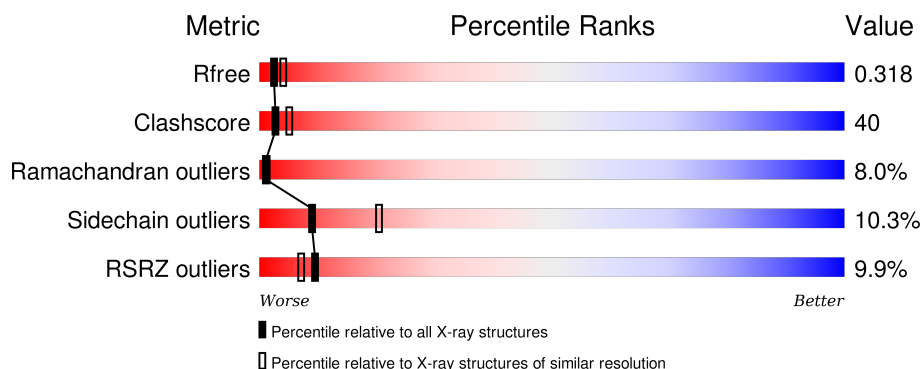
1 Overall quality at a glance

The following experimental techniques were used to determine the structure:

X-RAY DIFFRACTION

The reported resolution of this entry is 2.70 Å.

Percentile scores (ranging between 0-100) for global validation metrics of the entry are shown in the following graphic. The table shows the number of entries on which the scores are based.



Metric	Whole archive (#Entries)	Similar resolution (#Entries, resolution range(Å))
R_{free}	91344	2103 (2.70-2.70)
Clashscore	102246	2422 (2.70-2.70)
Ramachandran outliers	100387	2382 (2.70-2.70)
Sidechain outliers	100360	2382 (2.70-2.70)
RSRZ outliers	91569	2107 (2.70-2.70)

The table below summarises the geometric issues observed across the polymeric chains and their fit to the electron density. The red, orange, yellow and green segments on the lower bar indicate the fraction of residues that contain outliers for ≥ 3 , 2, 1 and 0 types of geometric quality criteria. A grey segment represents the fraction of residues that are not modelled. The numeric value for each fraction is indicated below the corresponding segment, with a dot representing fractions $\leq 5\%$. The upper red bar (where present) indicates the fraction of residues that have poor fit to the electron density. The numeric value is given above the bar.

Mol	Chain	Length	Quality of chain
1	A	285	

2 Entry composition [i](#)

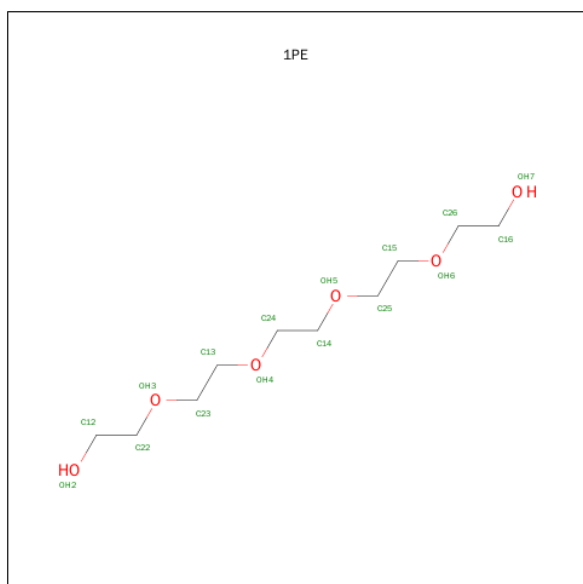
There are 3 unique types of molecules in this entry. The entry contains 1961 atoms, of which 0 are hydrogens and 0 are deuteriums.

In the tables below, the ZeroOcc column contains the number of atoms modelled with zero occupancy, the AltConf column contains the number of residues with at least one atom in alternate conformation and the Trace column contains the number of residues modelled with at most 2 atoms.

- Molecule 1 is a protein called LPP20 lipofamily protein.

Mol	Chain	Residues	Atoms					ZeroOcc	AltConf	Trace
1	A	242	Total	C	N	O	S	0	0	0
			1912	1211	329	367	5			

- Molecule 2 is PENTAETHYLENE GLYCOL (three-letter code: 1PE) (formula: C₁₀H₂₂O₆).



Mol	Chain	Residues	Atoms			ZeroOcc	AltConf
2	A	1	Total	C	O	0	0
			14	10	4		

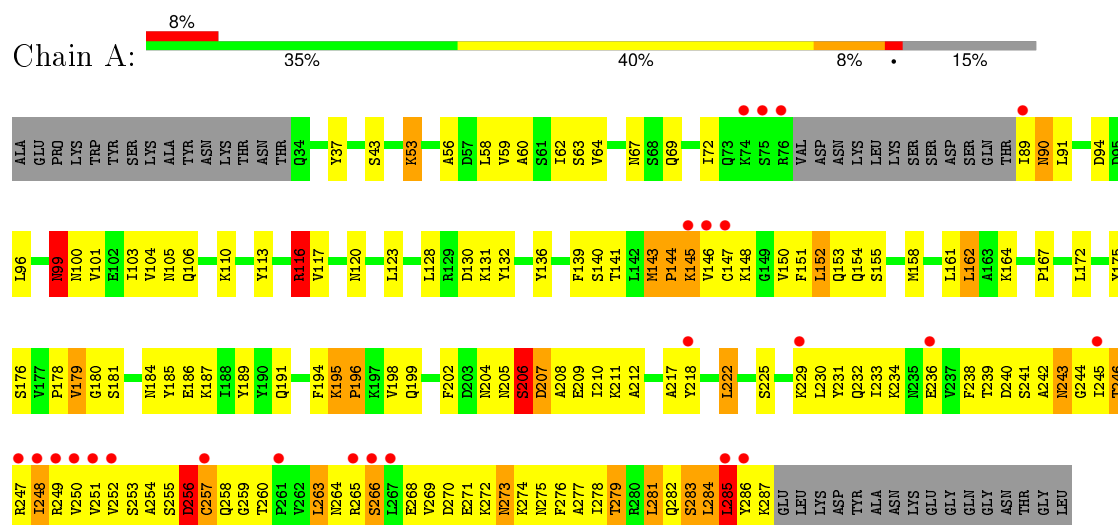
- Molecule 3 is water.

Mol	Chain	Residues	Atoms		ZeroOcc	AltConf
3	A	35	Total	O	0	0
			35	35		

3 Residue-property plots [i](#)

These plots are drawn for all protein, RNA and DNA chains in the entry. The first graphic for a chain summarises the proportions of errors displayed in the second graphic. The second graphic shows the sequence view annotated by issues in geometry and electron density. Residues are color-coded according to the number of geometric quality criteria for which they contain at least one outlier: green = 0, yellow = 1, orange = 2 and red = 3 or more. A red dot above a residue indicates a poor fit to the electron density ($RSRZ > 2$). Stretches of 2 or more consecutive residues without any outlier are shown as a green connector. Residues present in the sample, but not in the model, are shown in grey.

- Molecule 1: LPP20 lipofamily protein



4 Data and refinement statistics

Property	Value	Source
Space group	C 2 2 21	Depositor
Cell constants a, b, c, α , β , γ	73.64Å 101.35Å 121.08Å 90.00° 90.00° 90.00°	Depositor
Resolution (Å)	33.44 – 2.70 33.41 – 2.70	Depositor EDS
% Data completeness (in resolution range)	99.3 (33.44-2.70) 99.3 (33.41-2.70)	Depositor EDS
R_{merge}	0.09	Depositor
R_{sym}	(Not available)	Depositor
$\langle I/\sigma(I) \rangle$ ¹	2.59 (at 2.68Å)	Xtriage
Refinement program	REFMAC 5.7.0029	Depositor
R, R_{free}	0.248 , 0.304 0.260 , 0.318	Depositor DCC
R_{free} test set	623 reflections (5.16%)	DCC
Wilson B-factor (Å ²)	67.8	Xtriage
Anisotropy	0.617	Xtriage
Bulk solvent k_{sol} (e/Å ³), B_{sol} (Å ²)	0.31 , 77.5	EDS
Estimated twinning fraction	No twinning to report.	Xtriage
L-test for twinning ²	$\langle L \rangle = 0.47$, $\langle L^2 \rangle = 0.30$	Xtriage
Outliers	0 of 12698 reflections	Xtriage
F_o, F_c correlation	0.92	EDS
Total number of atoms	1961	wwPDB-VP
Average B, all atoms (Å ²)	84.0	wwPDB-VP

Xtriage's analysis on translational NCS is as follows: *The largest off-origin peak in the Patterson function is 6.24% of the height of the origin peak. No significant pseudotranslation is detected.*

¹Intensities estimated from amplitudes.

²Theoretical values of $\langle |L| \rangle$, $\langle L^2 \rangle$ for acentric reflections are 0.5, 0.375 respectively for untwinned datasets, and 0.333, 0.2 for perfectly twinned datasets.

5 Model quality [i](#)

5.1 Standard geometry [i](#)

Bond lengths and bond angles in the following residue types are not validated in this section: 1PE

The Z score for a bond length (or angle) is the number of standard deviations the observed value is removed from the expected value. A bond length (or angle) with $|Z| > 5$ is considered an outlier worth inspection. RMSZ is the root-mean-square of all Z scores of the bond lengths (or angles).

Mol	Chain	Bond lengths		Bond angles	
		RMSZ	$\# Z > 5$	RMSZ	$\# Z > 5$
1	A	0.69	0/1937	1.03	10/2611 (0.4%)

There are no bond length outliers.

All (10) bond angle outliers are listed below:

Mol	Chain	Res	Type	Atoms	Z	Observed($^{\circ}$)	Ideal($^{\circ}$)
1	A	256	ASP	CB-CA-C	-9.49	91.41	110.40
1	A	208	ALA	CB-CA-C	-8.43	97.46	110.10
1	A	99	ASN	N-CA-C	8.33	133.50	111.00
1	A	208	ALA	N-CA-C	7.55	131.39	111.00
1	A	238	PHE	CB-CA-C	7.29	124.97	110.40
1	A	246	THR	N-CA-C	-6.35	93.87	111.00
1	A	236	GLU	N-CA-C	-5.95	94.94	111.00
1	A	116	ARG	NE-CZ-NH2	-5.87	117.36	120.30
1	A	181	SER	N-CA-C	5.73	126.47	111.00
1	A	53	LYS	CD-CE-NZ	5.33	123.97	111.70

There are no chirality outliers.

There are no planarity outliers.

5.2 Too-close contacts [i](#)

In the following table, the Non-H and H(model) columns list the number of non-hydrogen atoms and hydrogen atoms in the chain respectively. The H(added) column lists the number of hydrogen atoms added and optimized by MolProbity. The Clashes column lists the number of clashes within the asymmetric unit, whereas Symm-Clashes lists symmetry related clashes.

Mol	Chain	Non-H	H(model)	H(added)	Clashes	Symm-Clashes
1	A	1912	0	1961	158	1

Continued on next page...

Continued from previous page...

Mol	Chain	Non-H	H(model)	H(added)	Clashes	Symm-Clashes
2	A	14	0	16	0	1
3	A	35	0	0	4	0
All	All	1961	0	1977	158	2

The all-atom clashscore is defined as the number of clashes found per 1000 atoms (including hydrogen atoms). The all-atom clashscore for this structure is 40.

All (158) close contacts within the same asymmetric unit are listed below, sorted by their clash magnitude.

Atom-1	Atom-2	Interatomic distance (Å)	Clash overlap (Å)
1:A:101:VAL:HA	3:A:510:HOH:O	1.01	1.17
1:A:245:ILE:CG2	1:A:254:ALA:H	1.59	1.16
1:A:233:ILE:HA	1:A:244:GLY:O	1.54	1.07
1:A:143:MET:HB3	1:A:144:PRO:HD2	1.39	1.04
1:A:153:GLN:HG2	1:A:283:SER:HA	1.45	0.96
1:A:245:ILE:HD13	1:A:254:ALA:HB3	1.48	0.94
1:A:198:VAL:HG22	1:A:222:LEU:HG	1.47	0.94
1:A:217:ALA:HB2	1:A:272:LYS:HG3	1.49	0.93
1:A:146:VAL:HB	1:A:247:ARG:NH1	1.86	0.90
1:A:245:ILE:HG21	1:A:254:ALA:HB3	1.51	0.90
1:A:245:ILE:CG2	1:A:254:ALA:N	2.33	0.90
1:A:245:ILE:HG23	1:A:254:ALA:H	1.33	0.90
1:A:240:ASP:HB3	1:A:259:GLY:HA2	1.51	0.89
1:A:195:LYS:HB2	1:A:196:PRO:HA	1.58	0.86
1:A:246:THR:OG1	1:A:251:VAL:HA	1.78	0.84
1:A:281:LEU:HD22	1:A:285:LEU:HD13	1.61	0.83
1:A:245:ILE:HG21	1:A:254:ALA:CA	2.10	0.82
1:A:278:ILE:HG23	1:A:287:LYS:HZ3	1.44	0.82
1:A:146:VAL:CG1	1:A:247:ARG:HH12	1.93	0.81
1:A:245:ILE:HG21	1:A:254:ALA:CB	2.10	0.81
1:A:229:LYS:HA	1:A:248:ILE:HG13	1.63	0.81
1:A:43:SER:H	1:A:53:LYS:HD3	1.47	0.79
1:A:195:LYS:CB	1:A:196:PRO:HA	2.14	0.77
1:A:143:MET:HB3	1:A:144:PRO:CD	2.17	0.74
1:A:153:GLN:NE2	1:A:284:LEU:HG	2.03	0.74
1:A:143:MET:O	1:A:145:LYS:HD3	1.87	0.72
1:A:153:GLN:NE2	1:A:282:GLN:O	2.21	0.72
1:A:278:ILE:HG23	1:A:287:LYS:NZ	2.04	0.72
1:A:269:VAL:HG13	1:A:273:ASN:OD1	1.90	0.72
1:A:273:ASN:H	1:A:273:ASN:ND2	1.89	0.71
1:A:209:GLU:O	1:A:212:ALA:HB3	1.92	0.70

Continued on next page...

Continued from previous page...

Atom-1	Atom-2	Interatomic distance (Å)	Clash overlap (Å)
1:A:245:ILE:HG21	1:A:254:ALA:C	2.11	0.70
1:A:99:ASN:OD1	1:A:99:ASN:N	2.25	0.70
1:A:100:ASN:OD1	1:A:100:ASN:O	2.12	0.68
1:A:150:VAL:HG12	1:A:151:PHE:N	2.08	0.68
1:A:269:VAL:HG22	1:A:273:ASN:HD21	1.57	0.68
1:A:245:ILE:HG22	1:A:255:SER:OG	1.94	0.67
1:A:245:ILE:HG22	1:A:254:ALA:H	1.57	0.67
1:A:187:LYS:HE3	1:A:191:GLN:NE2	2.09	0.67
1:A:248:ILE:HD13	1:A:249:ARG:N	2.10	0.66
1:A:187:LYS:HE3	1:A:191:GLN:HE21	1.61	0.66
1:A:245:ILE:CG2	1:A:254:ALA:CA	2.72	0.65
1:A:146:VAL:CB	1:A:247:ARG:HH12	2.10	0.65
1:A:245:ILE:O	1:A:245:ILE:HG23	1.96	0.64
1:A:245:ILE:N	1:A:255:SER:OG	2.33	0.61
1:A:282:GLN:C	1:A:284:LEU:H	2.05	0.61
1:A:194:PHE:O	1:A:195:LYS:HB2	2.01	0.60
1:A:245:ILE:CG2	1:A:254:ALA:C	2.69	0.60
1:A:146:VAL:HB	1:A:247:ARG:HH12	1.60	0.60
1:A:273:ASN:N	1:A:273:ASN:ND2	2.49	0.59
1:A:56:ALA:O	1:A:59:VAL:HG22	2.03	0.59
1:A:229:LYS:HA	1:A:248:ILE:CG1	2.31	0.58
1:A:91:LEU:O	1:A:91:LEU:HD12	2.04	0.58
1:A:248:ILE:O	1:A:249:ARG:HB2	2.03	0.58
1:A:120:ASN:HB3	1:A:123:LEU:HB2	1.87	0.57
1:A:278:ILE:HD12	1:A:287:LYS:HZ3	1.69	0.57
1:A:195:LYS:CB	1:A:196:PRO:CA	2.83	0.57
1:A:153:GLN:HG2	1:A:283:SER:CA	2.27	0.56
1:A:144:PRO:O	1:A:145:LYS:HB2	2.05	0.56
1:A:273:ASN:N	1:A:273:ASN:HD22	2.01	0.56
1:A:248:ILE:CD1	1:A:249:ARG:HH11	2.19	0.56
1:A:241:SER:OG	1:A:242:ALA:N	2.38	0.56
1:A:278:ILE:HD12	1:A:287:LYS:NZ	2.21	0.56
1:A:139:PHE:CD2	1:A:185:TYR:CD1	2.94	0.56
1:A:258:GLN:HA	3:A:523:HOH:O	2.05	0.56
1:A:198:VAL:CG2	1:A:222:LEU:HG	2.30	0.55
1:A:202:PHE:CE2	1:A:211:LYS:HG3	2.42	0.55
1:A:69:GLN:HG2	1:A:175:TYR:CZ	2.42	0.55
1:A:150:VAL:HG12	1:A:151:PHE:H	1.70	0.55
1:A:263:LEU:HD12	1:A:263:LEU:H	1.71	0.54
1:A:146:VAL:CB	1:A:247:ARG:NH1	2.62	0.54
1:A:243:ASN:OD1	1:A:243:ASN:N	2.41	0.54

Continued on next page...

Continued from previous page...

Atom-1	Atom-2	Interatomic distance (Å)	Clash overlap (Å)
1:A:245:ILE:CG2	1:A:254:ALA:HB3	2.32	0.54
1:A:240:ASP:CB	1:A:259:GLY:HA2	2.30	0.54
1:A:246:THR:CG2	1:A:246:THR:O	2.54	0.54
1:A:268:GLU:O	1:A:268:GLU:HG2	2.08	0.54
1:A:43:SER:N	1:A:53:LYS:HD3	2.21	0.53
1:A:147:CYS:SG	1:A:248:ILE:HG22	2.49	0.53
1:A:245:ILE:O	1:A:245:ILE:CG2	2.56	0.53
1:A:105:ASN:OD1	1:A:116:ARG:HD2	2.10	0.52
1:A:250:VAL:HG12	1:A:251:VAL:N	2.25	0.51
1:A:67:ASN:ND2	1:A:89:ILE:HD12	2.25	0.51
1:A:274:LYS:NZ	1:A:278:ILE:HG13	2.26	0.51
1:A:271:GLU:O	1:A:275:ASN:HB2	2.10	0.51
1:A:58:LEU:HD12	1:A:58:LEU:O	2.11	0.51
1:A:229:LYS:HG3	1:A:248:ILE:HG13	1.93	0.51
1:A:147:CYS:SG	1:A:247:ARG:HB2	2.52	0.50
1:A:150:VAL:HG13	1:A:154:GLN:CD	2.31	0.50
1:A:199:GLN:HA	1:A:225:SER:O	2.12	0.49
1:A:148:LYS:CE	1:A:229:LYS:HD3	2.43	0.49
1:A:246:THR:HA	1:A:252:VAL:O	2.12	0.49
1:A:245:ILE:HG12	1:A:246:THR:N	2.27	0.49
1:A:148:LYS:HE3	1:A:229:LYS:HD3	1.95	0.48
1:A:247:ARG:O	1:A:250:VAL:O	2.32	0.48
1:A:198:VAL:HA	1:A:230:LEU:HD13	1.96	0.48
1:A:239:THR:OG1	1:A:263:LEU:HD11	2.13	0.48
1:A:245:ILE:HG23	1:A:254:ALA:N	2.13	0.48
1:A:152:LEU:O	1:A:155:SER:HB3	2.13	0.47
1:A:67:ASN:HD22	1:A:89:ILE:HD12	1.78	0.47
1:A:246:THR:HG23	1:A:246:THR:O	2.08	0.47
1:A:103:ILE:HD13	1:A:117:VAL:HG12	1.96	0.47
1:A:256:ASP:HB2	1:A:258:GLN:HE22	1.80	0.47
1:A:207:ASP:O	1:A:211:LYS:HB2	2.14	0.47
1:A:151:PHE:CE1	1:A:233:ILE:HD11	2.49	0.47
1:A:139:PHE:CZ	1:A:158:MET:HE3	2.50	0.47
1:A:150:VAL:CG1	1:A:151:PHE:N	2.76	0.47
1:A:196:PRO:O	1:A:222:LEU:HD12	2.14	0.47
1:A:139:PHE:CZ	1:A:158:MET:CE	2.97	0.46
1:A:218:TYR:O	1:A:222:LEU:HB2	2.14	0.46
1:A:283:SER:O	1:A:284:LEU:HB2	2.15	0.46
1:A:152:LEU:N	1:A:152:LEU:CD2	2.79	0.46
1:A:242:ALA:HA	1:A:257:CYS:HB2	1.98	0.45
1:A:113:TYR:CD1	1:A:113:TYR:N	2.84	0.45

Continued on next page...

Continued from previous page...

Atom-1	Atom-2	Interatomic distance (Å)	Clash overlap (Å)
1:A:100:ASN:O	1:A:100:ASN:CG	2.55	0.45
1:A:153:GLN:HE21	1:A:284:LEU:N	2.15	0.45
1:A:128:LEU:HA	1:A:128:LEU:HD23	1.82	0.45
1:A:99:ASN:HB2	1:A:100:ASN:H	1.37	0.45
1:A:110:LYS:HA	1:A:110:LYS:HD3	1.77	0.45
1:A:94:ASP:OD1	1:A:96:LEU:HB2	2.17	0.45
1:A:187:LYS:HG3	1:A:191:GLN:HE21	1.81	0.45
1:A:277:ALA:O	1:A:281:LEU:HG	2.17	0.45
1:A:139:PHE:HD2	1:A:185:TYR:CD1	2.34	0.44
1:A:269:VAL:O	1:A:272:LYS:HB3	2.18	0.44
1:A:139:PHE:HD1	1:A:161:LEU:HD12	1.82	0.44
1:A:59:VAL:HG23	1:A:60:ALA:N	2.33	0.44
1:A:194:PHE:O	1:A:195:LYS:CB	2.64	0.44
1:A:151:PHE:HB2	1:A:231:TYR:CD2	2.52	0.43
1:A:90:ASN:C	1:A:90:ASN:HD22	2.21	0.43
1:A:67:ASN:CG	1:A:89:ILE:HA	2.38	0.43
1:A:136:TYR:CD1	1:A:185:TYR:HE2	2.36	0.43
1:A:248:ILE:HD12	1:A:249:ARG:HH11	1.81	0.43
1:A:233:ILE:CA	1:A:244:GLY:O	2.45	0.43
1:A:260:THR:HG23	1:A:260:THR:O	2.19	0.43
1:A:231:TYR:HA	1:A:247:ARG:HA	2.00	0.42
1:A:229:LYS:NZ	1:A:249:ARG:HH12	2.17	0.42
1:A:276:PHE:O	1:A:279:THR:N	2.52	0.42
1:A:172:LEU:HA	1:A:172:LEU:HD23	1.82	0.42
1:A:130:ASP:OD2	3:A:506:HOH:O	2.22	0.42
1:A:132:TYR:CE1	1:A:136:TYR:HD2	2.38	0.42
1:A:264:ASN:O	1:A:265:ARG:HB2	2.19	0.42
1:A:139:PHE:CE2	1:A:158:MET:HE3	2.54	0.41
1:A:164:LYS:O	1:A:167:PRO:HD2	2.20	0.41
1:A:175:TYR:O	1:A:176:SER:HB2	2.20	0.41
1:A:205:ASN:O	1:A:206:SER:O	2.39	0.41
1:A:251:VAL:O	1:A:253:SER:N	2.53	0.41
1:A:284:LEU:HD23	1:A:284:LEU:HA	1.89	0.41
1:A:152:LEU:O	1:A:155:SER:N	2.40	0.41
1:A:186:GLU:O	1:A:189:TYR:HB3	2.20	0.41
1:A:265:ARG:HB3	1:A:266:SER:H	1.66	0.41
1:A:232:GLN:OE1	1:A:234:LYS:HE2	2.20	0.41
1:A:43:SER:HA	1:A:113:TYR:O	2.20	0.41
1:A:139:PHE:CE1	1:A:162:LEU:HD13	2.55	0.41
1:A:251:VAL:O	1:A:252:VAL:C	2.59	0.41
1:A:104:VAL:HG12	1:A:105:ASN:OD1	2.20	0.41

Continued on next page...

Continued from previous page...

Atom-1	Atom-2	Interatomic distance (Å)	Clash overlap (Å)
1:A:62:ILE:O	1:A:63:SER:C	2.60	0.41
1:A:131:LYS:NZ	3:A:502:HOH:O	2.54	0.40
1:A:140:SER:O	1:A:143:MET:HE2	2.21	0.40
1:A:222:LEU:HD12	1:A:222:LEU:HA	1.58	0.40

All (2) symmetry-related close contacts are listed below. The label for Atom-2 includes the symmetry operator and encoded unit-cell translations to be applied.

Atom-1	Atom-2	Interatomic distance (Å)	Clash overlap (Å)
1:A:259:GLY:O	1:A:259:GLY:O[4_565]	1.99	0.21
2:A:401:1PE:C12	2:A:401:1PE:C12[3_555]	2.16	0.04

5.3 Torsion angles ⓘ

5.3.1 Protein backbone ⓘ

In the following table, the Percentiles column shows the percent Ramachandran outliers of the chain as a percentile score with respect to all X-ray entries followed by that with respect to entries of similar resolution.

The Analysed column shows the number of residues for which the backbone conformation was analysed, and the total number of residues.

Mol	Chain	Analysed	Favoured	Allowed	Outliers	Percentiles
1	A	238/285 (84%)	183 (77%)	36 (15%)	19 (8%)	1 1

All (19) Ramachandran outliers are listed below:

Mol	Chain	Res	Type
1	A	179	VAL
1	A	195	LYS
1	A	196	PRO
1	A	206	SER
1	A	178	PRO
1	A	180	GLY
1	A	145	LYS
1	A	204	ASN
1	A	263	LEU
1	A	266	SER
1	A	281	LEU

Continued on next page...

Continued from previous page...

Mol	Chain	Res	Type
1	A	286	TYR
1	A	284	LEU
1	A	285	LEU
1	A	283	SER
1	A	144	PRO
1	A	72	ILE
1	A	143	MET
1	A	64	VAL

5.3.2 Protein sidechains ⓘ

In the following table, the Percentiles column shows the percent sidechain outliers of the chain as a percentile score with respect to all X-ray entries followed by that with respect to entries of similar resolution.

The Analysed column shows the number of residues for which the sidechain conformation was analysed, and the total number of residues.

Mol	Chain	Analysed	Rotameric	Outliers	Percentiles
1	A	213/250 (85%)	191 (90%)	22 (10%)	9 20

All (22) residues with a non-rotameric sidechain are listed below:

Mol	Chain	Res	Type
1	A	37	TYR
1	A	90	ASN
1	A	99	ASN
1	A	106	GLN
1	A	116	ARG
1	A	141	THR
1	A	152	LEU
1	A	162	LEU
1	A	179	VAL
1	A	184	ASN
1	A	206	SER
1	A	207	ASP
1	A	210	ILE
1	A	222	LEU
1	A	243	ASN
1	A	248	ILE
1	A	256	ASP
1	A	257	CYS

Continued on next page...

Continued from previous page...

Mol	Chain	Res	Type
1	A	270	ASP
1	A	273	ASN
1	A	279	THR
1	A	285	LEU

Some sidechains can be flipped to improve hydrogen bonding and reduce clashes. All (8) such sidechains are listed below:

Mol	Chain	Res	Type
1	A	90	ASN
1	A	153	GLN
1	A	154	GLN
1	A	191	GLN
1	A	205	ASN
1	A	258	GLN
1	A	264	ASN
1	A	273	ASN

5.3.3 RNA [i](#)

There are no RNA molecules in this entry.

5.4 Non-standard residues in protein, DNA, RNA chains [i](#)

There are no non-standard protein/DNA/RNA residues in this entry.

5.5 Carbohydrates [i](#)

There are no carbohydrates in this entry.

5.6 Ligand geometry [i](#)

1 ligand is modelled in this entry.

In the following table, the Counts columns list the number of bonds (or angles) for which Mogul statistics could be retrieved, the number of bonds (or angles) that are observed in the model and the number of bonds (or angles) that are defined in the chemical component dictionary. The Link column lists molecule types, if any, to which the group is linked. The Z score for a bond length (or angle) is the number of standard deviations the observed value is removed from the expected value. A bond length (or angle) with $|Z| > 2$ is considered an outlier worth inspection. RMSZ is the root-mean-square of all Z scores of the bond lengths (or angles).

Mol	Type	Chain	Res	Link	Bond lengths			Bond angles		
					Counts	RMSZ	# Z > 2	Counts	RMSZ	# Z > 2
2	1PE	A	401	-	13,13,15	0.80	0	12,12,14	0.85	1 (8%)

In the following table, the Chirals column lists the number of chiral outliers, the number of chiral centers analysed, the number of these observed in the model and the number defined in the chemical component dictionary. Similar counts are reported in the Torsion and Rings columns. '-' means no outliers of that kind were identified.

Mol	Type	Chain	Res	Link	Chirals	Torsions	Rings
2	1PE	A	401	-	-	0/11/11/13	0/0/0/0

There are no bond length outliers.

All (1) bond angle outliers are listed below:

Mol	Chain	Res	Type	Atoms	Z	Observed(°)	Ideal(°)
2	A	401	1PE	C26-OH6-C15	-2.68	102.54	112.80

There are no chirality outliers.

There are no torsion outliers.

There are no ring outliers.

1 monomer is involved in 1 short contact:

Mol	Chain	Res	Type	Clashes	Symm-Clashes
2	A	401	1PE	0	1

5.7 Other polymers [i](#)

There are no such residues in this entry.

5.8 Polymer linkage issues [i](#)

There are no chain breaks in this entry.

6 Fit of model and data ⓘ

6.1 Protein, DNA and RNA chains ⓘ

In the following table, the column labelled ‘#RSRZ> 2’ contains the number (and percentage) of RSRZ outliers, followed by percent RSRZ outliers for the chain as percentile scores relative to all X-ray entries and entries of similar resolution. The OWAB column contains the minimum, median, 95th percentile and maximum values of the occupancy-weighted average B-factor per residue. The column labelled ‘Q< 0.9’ lists the number of (and percentage) of residues with an average occupancy less than 0.9.

Mol	Chain	Analysed	<RSRZ>	#RSRZ>2	OWAB(Å ²)	Q<0.9
1	A	242/285 (84%)	0.48	24 (9%) 9 7	35, 75, 149, 172	0

All (24) RSRZ outliers are listed below:

Mol	Chain	Res	Type	RSRZ
1	A	89	ILE	8.3
1	A	286	TYR	6.5
1	A	146	VAL	5.9
1	A	76	ARG	5.6
1	A	75	SER	5.2
1	A	266	SER	4.5
1	A	147	CYS	4.5
1	A	229	LYS	4.5
1	A	248	ILE	4.5
1	A	74	LYS	4.3
1	A	236	GLU	4.2
1	A	249	ARG	4.2
1	A	265	ARG	4.0
1	A	145	LYS	3.7
1	A	251	VAL	3.3
1	A	250	VAL	3.0
1	A	285	LEU	2.7
1	A	245	ILE	2.6
1	A	247	ARG	2.6
1	A	218	TYR	2.3
1	A	261	PRO	2.3
1	A	252	VAL	2.3
1	A	257	CYS	2.2
1	A	267	LEU	2.2

6.2 Non-standard residues in protein, DNA, RNA chains [i](#)

There are no non-standard protein/DNA/RNA residues in this entry.

6.3 Carbohydrates [i](#)

There are no carbohydrates in this entry.

6.4 Ligands [i](#)

In the following table, the Atoms column lists the number of modelled atoms in the group and the number defined in the chemical component dictionary. LLDF column lists the quality of electron density of the group with respect to its neighbouring residues in protein, DNA or RNA chains. The B-factors column lists the minimum, median, 95th percentile and maximum values of B factors of atoms in the group. The column labelled 'Q< 0.9' lists the number of atoms with occupancy less than 0.9.

Mol	Type	Chain	Res	Atoms	RSCC	RSR	LLDF	B-factors(\AA^2)	Q<0.9
2	1PE	A	401	14/16	0.91	0.16	-0.57	61,69,90,90	0

6.5 Other polymers [i](#)

There are no such residues in this entry.