



Full wwPDB X-ray Structure Validation Report ⓘ

Feb 1, 2016 – 10:09 AM GMT

PDB ID : 3L0T
Title : Crystal structure of catalytic domain of TACE with hydantoin inhibitor
Authors : Orth, P.
Deposited on : 2009-12-10
Resolution : 1.92 Å(reported)

This is a Full wwPDB X-ray Structure Validation Report for a publicly released PDB entry.
We welcome your comments at validation@mail.wwpdb.org
A user guide is available at
<http://wwpdb.org/validation/2016/XrayValidationReportHelp>
with specific help available everywhere you see the ⓘ symbol.

The following versions of software and data (see [references ⓘ](#)) were used in the production of this report:

MolProbity : 4.02b-467
Mogul : 1.7 (RC4), CSD as536be (2015)
Xtriage (Phenix) : 1.9-1692
EDS : rb-20026688
Percentile statistics : 20151230.v01 (using entries in the PDB archive December 30th 2015)
Refmac : 5.8.0135
CCP4 : 6.5.0
Ideal geometry (proteins) : Engh & Huber (2001)
Ideal geometry (DNA, RNA) : Parkinson et al. (1996)
Validation Pipeline (wwPDB-VP) : trunk26865

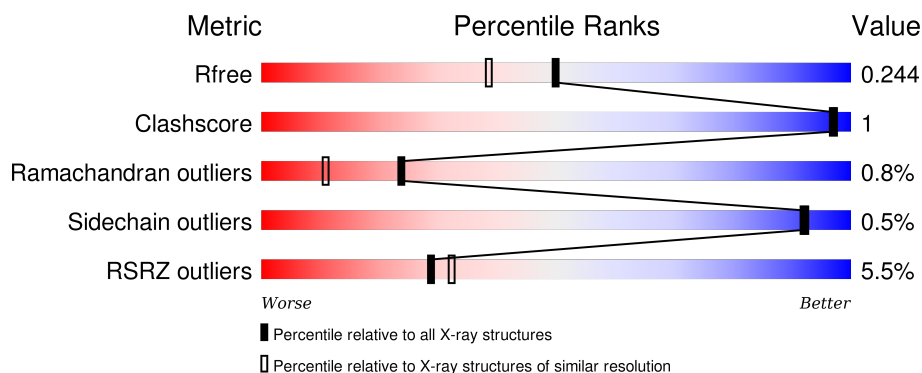
1 Overall quality at a glance

The following experimental techniques were used to determine the structure:

X-RAY DIFFRACTION

The reported resolution of this entry is 1.92 Å.

Percentile scores (ranging between 0-100) for global validation metrics of the entry are shown in the following graphic. The table shows the number of entries on which the scores are based.



Metric	Whole archive (#Entries)	Similar resolution (#Entries, resolution range(Å))
R_{free}	91344	5832 (1.94-1.90)
Clashscore	102246	6540 (1.94-1.90)
Ramachandran outliers	100387	6464 (1.94-1.90)
Sidechain outliers	100360	6465 (1.94-1.90)
RSRZ outliers	91569	5846 (1.94-1.90)

The table below summarises the geometric issues observed across the polymeric chains and their fit to the electron density. The red, orange, yellow and green segments on the lower bar indicate the fraction of residues that contain outliers for ≥ 3 , 2, 1 and 0 types of geometric quality criteria. A grey segment represents the fraction of residues that are not modelled. The numeric value for each fraction is indicated below the corresponding segment, with a dot representing fractions $\leq 5\%$. The upper red bar (where present) indicates the fraction of residues that have poor fit to the electron density. The numeric value is given above the bar.

Mol	Chain	Length	Quality of chain
1	A	270	<div> <div>4%</div> <div>91%</div> <div>6%</div> </div>
1	B	270	<div> <div>6%</div> <div>91%</div> <div>6%</div> </div>

The following table lists non-polymeric compounds, carbohydrate monomers and non-standard residues in protein, DNA, RNA chains that are outliers for geometric or electron-density-fit criteria:

Mol	Type	Chain	Res	Chirality	Geometry	Clashes	Electron density
3	INN	A	502	-	-	-	X
5	Z94	B	502[A]	-	-	-	X
5	Z94	B	502[B]	X	-	-	X

2 Entry composition

There are 6 unique types of molecules in this entry. The entry contains 4244 atoms, of which 0 are hydrogens and 0 are deuteriums.

In the tables below, the ZeroOcc column contains the number of atoms modelled with zero occupancy, the AltConf column contains the number of residues with at least one atom in alternate conformation and the Trace column contains the number of residues modelled with at most 2 atoms.

- Molecule 1 is a protein called Disintegrin and metalloproteinase domain-containing protein 17.

Mol	Chain	Residues	Atoms					ZeroOcc	AltConf	Trace
1	A	254	Total	C	N	O	S	0	1	0
			1986	1251	331	391	13			
1	B	254	Total	C	N	O	S	0	1	0
			1930	1221	320	376	13			

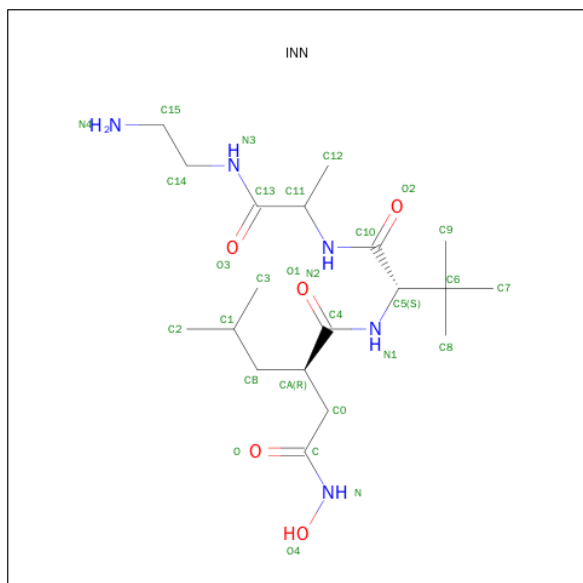
There are 22 discrepancies between the modelled and reference sequences:

Chain	Residue	Modelled	Actual	Comment	Reference
A	266	ALA	SER	ENGINEERED	UNP P78536
A	353	GLY	VAL	ENGINEERED	UNP P78536
A	452	GLN	ASN	ENGINEERED	UNP P78536
A	477	GLY	-	EXPRESSION TAG	UNP P78536
A	478	SER	-	EXPRESSION TAG	UNP P78536
A	479	HIS	-	EXPRESSION TAG	UNP P78536
A	480	HIS	-	EXPRESSION TAG	UNP P78536
A	481	HIS	-	EXPRESSION TAG	UNP P78536
A	482	HIS	-	EXPRESSION TAG	UNP P78536
A	483	HIS	-	EXPRESSION TAG	UNP P78536
A	484	HIS	-	EXPRESSION TAG	UNP P78536
B	266	ALA	SER	ENGINEERED	UNP P78536
B	353	GLY	VAL	ENGINEERED	UNP P78536
B	452	GLN	ASN	ENGINEERED	UNP P78536
B	477	GLY	-	EXPRESSION TAG	UNP P78536
B	478	SER	-	EXPRESSION TAG	UNP P78536
B	479	HIS	-	EXPRESSION TAG	UNP P78536
B	480	HIS	-	EXPRESSION TAG	UNP P78536
B	481	HIS	-	EXPRESSION TAG	UNP P78536
B	482	HIS	-	EXPRESSION TAG	UNP P78536
B	483	HIS	-	EXPRESSION TAG	UNP P78536
B	484	HIS	-	EXPRESSION TAG	UNP P78536

- Molecule 2 is ZINC ION (three-letter code: ZN) (formula: Zn).

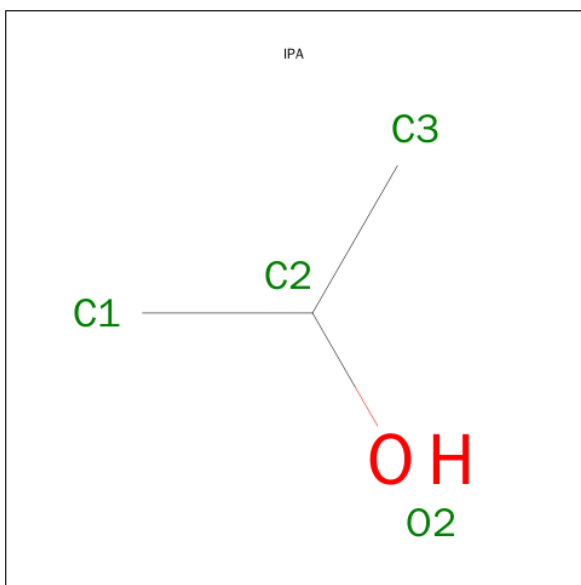
Mol	Chain	Residues	Atoms		ZeroOcc	AltConf
2	B	1	Total	Zn	0	0
			1	1		
2	A	1	Total	Zn	0	0
			1	1		

- Molecule 3 is N-{(2R)-2-[2-(HYDROXYAMINO)-2-OXOETHYL]-4-METHYLPENTANOYL}-3-METHYL-L-VALYL-N-(2-AMINOETHYL)-L-ALANINAMIDE (three-letter code: INN) (formula: $C_{19}H_{37}N_5O_5$).



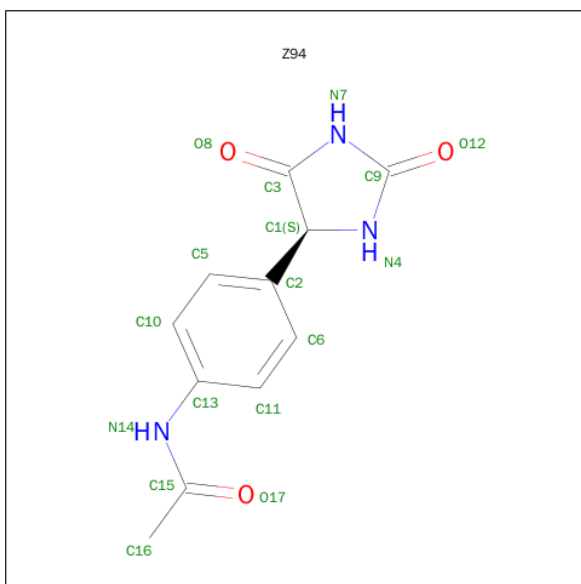
Mol	Chain	Residues	Atoms				ZeroOcc	AltConf
3	A	1	Total	C	N	O	0	0
			29	19	5	5		

- Molecule 4 is ISOPROPYL ALCOHOL (three-letter code: IPA) (formula: C_3H_8O).



Mol	Chain	Residues	Atoms			ZeroOcc	AltConf
4	A	1	Total	C	O	0	0
			4	3	1		
4	B	1	Total	C	O	0	0
			4	3	1		

- Molecule 5 is N-{4-[(4S)-2,5-DIOXOIMIDAZOLIDIN-4-YL]PHENYL} ACETAMIDE (three-letter code: Z94) (formula: C₁₁H₁₁N₃O₃).



Mol	Chain	Residues	Atoms				ZeroOcc	AltConf
5	B	1	Total	C	N	O	0	1
			34	22	6	6		

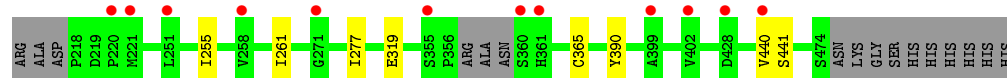
- Molecule 6 is water.

Mol	Chain	Residues	Atoms		ZeroOcc	AltConf
6	A	150	Total 150	O 150	0	0
6	B	105	Total 105	O 105	0	0

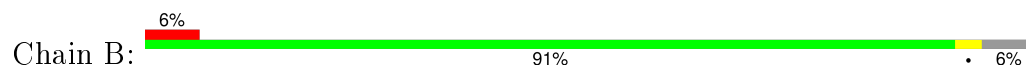
3 Residue-property plots [i](#)

These plots are drawn for all protein, RNA and DNA chains in the entry. The first graphic for a chain summarises the proportions of errors displayed in the second graphic. The second graphic shows the sequence view annotated by issues in geometry and electron density. Residues are color-coded according to the number of geometric quality criteria for which they contain at least one outlier: green = 0, yellow = 1, orange = 2 and red = 3 or more. A red dot above a residue indicates a poor fit to the electron density ($RSRZ > 2$). Stretches of 2 or more consecutive residues without any outlier are shown as a green connector. Residues present in the sample, but not in the model, are shown in grey.

- Molecule 1: Disintegrin and metalloproteinase domain-containing protein 17



- Molecule 1: Disintegrin and metalloproteinase domain-containing protein 17



4 Data and refinement statistics

Property	Value	Source
Space group	P 21 21 21	Depositor
Cell constants a, b, c, α , β , γ	74.20Å 75.51Å 102.72Å 90.00° 90.00° 90.00°	Depositor
Resolution (Å)	28.11 – 1.92 33.65 – 1.92	Depositor EDS
% Data completeness (in resolution range)	(Not available) (28.11-1.92) 98.7 (33.65-1.92)	Depositor EDS
R_{merge}	(Not available)	Depositor
R_{sym}	(Not available)	Depositor
$\langle I/\sigma(I) \rangle$ ¹	2.43 (at 1.92Å)	Xtriage
Refinement program	BUSTER 2.9.2	Depositor
R, R_{free}	0.212 , 0.239 0.214 , 0.244	Depositor DCC
R_{free} test set	836 reflections (1.93%)	DCC
Wilson B-factor (Å ²)	26.2	Xtriage
Anisotropy	0.379	Xtriage
Bulk solvent k_{sol} (e/Å ³), B_{sol} (Å ²)	0.33 , 48.0	EDS
Estimated twinning fraction	0.017 for k,h,-l	Xtriage
L-test for twinning ²	$\langle L \rangle = 0.49$, $\langle L^2 \rangle = 0.32$	Xtriage
Outliers	0 of 44164 reflections	Xtriage
F_o, F_c correlation	0.94	EDS
Total number of atoms	4244	wwPDB-VP
Average B, all atoms (Å ²)	32.0	wwPDB-VP

Xtriage's analysis on translational NCS is as follows: *The largest off-origin peak in the Patterson function is 4.54% of the height of the origin peak. No significant pseudotranslation is detected.*

¹Intensities estimated from amplitudes.

²Theoretical values of $\langle |L| \rangle$, $\langle L^2 \rangle$ for acentric reflections are 0.5, 0.375 respectively for untwinned datasets, and 0.333, 0.2 for perfectly twinned datasets.

5 Model quality

5.1 Standard geometry

Bond lengths and bond angles in the following residue types are not validated in this section: Z94, INN, IPA, ZN

The Z score for a bond length (or angle) is the number of standard deviations the observed value is removed from the expected value. A bond length (or angle) with $|Z| > 5$ is considered an outlier worth inspection. RMSZ is the root-mean-square of all Z scores of the bond lengths (or angles).

Mol	Chain	Bond lengths		Bond angles	
		RMSZ	$\# Z > 5$	RMSZ	$\# Z > 5$
1	A	0.51	0/2035	0.65	0/2750
1	B	0.49	0/1976	0.65	0/2684
All	All	0.50	0/4011	0.65	0/5434

There are no bond length outliers.

There are no bond angle outliers.

There are no chirality outliers.

There are no planarity outliers.

5.2 Too-close contacts

In the following table, the Non-H and H(model) columns list the number of non-hydrogen atoms and hydrogen atoms in the chain respectively. The H(added) column lists the number of hydrogen atoms added and optimized by MolProbity. The Clashes column lists the number of clashes within the asymmetric unit, whereas Symm-Clashes lists symmetry related clashes.

Mol	Chain	Non-H	H(model)	H(added)	Clashes	Symm-Clashes
1	A	1986	0	1865	4	0
1	B	1930	0	1752	4	0
2	A	1	0	0	0	0
2	B	1	0	0	0	0
3	A	29	0	37	2	0
4	A	4	0	7	0	0
4	B	4	0	8	1	0
5	B	34	0	20	3	0
6	A	150	0	0	2	0
6	B	105	0	0	0	0
All	All	4244	0	3689	10	0

The all-atom clashscore is defined as the number of clashes found per 1000 atoms (including hydrogen atoms). The all-atom clashscore for this structure is 1.

All (10) close contacts within the same asymmetric unit are listed below, sorted by their clash magnitude.

Atom-1	Atom-2	Interatomic distance (Å)	Clash overlap (Å)
1:B:279:ILE:HG21	1:B:282:ILE:HG13	1.91	0.53
1:B:347:THR:HG23	5:B:502[B]:Z94:O8	2.13	0.49
5:B:502[B]:Z94:C9	4:B:503:IPA:H33	2.43	0.48
1:A:390:TYR:HE2	3:A:502:INN:O3	1.98	0.46
1:A:255:ILE:HG23	1:A:277:ILE:HD12	2.00	0.44
1:B:314:VAL:HG11	1:B:347:THR:HG21	2.01	0.43
1:A:261:ILE:HD13	6:A:739:HOH:O	2.20	0.42
1:A:319:GLU:HG3	6:A:703:HOH:O	2.19	0.42
1:B:405:HIS:HB2	5:B:502[B]:Z94:H16A	2.02	0.41
3:A:502:INN:H23	3:A:502:INN:HA	1.90	0.41

There are no symmetry-related clashes.

5.3 Torsion angles [i](#)

5.3.1 Protein backbone [i](#)

In the following table, the Percentiles column shows the percent Ramachandran outliers of the chain as a percentile score with respect to all X-ray entries followed by that with respect to entries of similar resolution.

The Analysed column shows the number of residues for which the backbone conformation was analysed, and the total number of residues.

Mol	Chain	Analysed	Favoured	Allowed	Outliers	Percentiles	
1	A	251/270 (93%)	242 (96%)	6 (2%)	3 (1%)	16	5
1	B	253/270 (94%)	245 (97%)	7 (3%)	1 (0%)	39	27
All	All	504/540 (93%)	487 (97%)	13 (3%)	4 (1%)	24	11

All (4) Ramachandran outliers are listed below:

Mol	Chain	Res	Type
1	A	440	VAL
1	A	441	SER
1	A	365	CYS
1	B	365	CYS

5.3.2 Protein sidechains [i](#)

In the following table, the Percentiles column shows the percent sidechain outliers of the chain as a percentile score with respect to all X-ray entries followed by that with respect to entries of similar resolution.

The Analysed column shows the number of residues for which the sidechain conformation was analysed, and the total number of residues.

Mol	Chain	Analysed	Rotameric	Outliers	Percentiles	
1	A	210/230 (91%)	210 (100%)	0	100	100
1	B	191/230 (83%)	189 (99%)	2 (1%)	82	80
All	All	401/460 (87%)	399 (100%)	2 (0%)	92	92

All (2) residues with a non-rotameric sidechain are listed below:

Mol	Chain	Res	Type
1	B	295	GLU
1	B	344	ASP

Some sidechains can be flipped to improve hydrogen bonding and reduce clashes. All (2) such sidechains are listed below:

Mol	Chain	Res	Type
1	B	359	ASN
1	B	471	GLN

5.3.3 RNA [i](#)

There are no RNA molecules in this entry.

5.4 Non-standard residues in protein, DNA, RNA chains [i](#)

There are no non-standard protein/DNA/RNA residues in this entry.

5.5 Carbohydrates [i](#)

There are no carbohydrates in this entry.

5.6 Ligand geometry

Of 7 ligands modelled in this entry, 2 are monoatomic - leaving 5 for Mogul analysis.

In the following table, the Counts columns list the number of bonds (or angles) for which Mogul statistics could be retrieved, the number of bonds (or angles) that are observed in the model and the number of bonds (or angles) that are defined in the chemical component dictionary. The Link column lists molecule types, if any, to which the group is linked. The Z score for a bond length (or angle) is the number of standard deviations the observed value is removed from the expected value. A bond length (or angle) with $|Z| > 2$ is considered an outlier worth inspection. RMSZ is the root-mean-square of all Z scores of the bond lengths (or angles).

Mol	Type	Chain	Res	Link	Bond lengths			Bond angles		
					Counts	RMSZ	$\# Z > 2$	Counts	RMSZ	$\# Z > 2$
3	INN	A	502	2	28,28,28	1.44	7 (25%)	33,38,38	2.37	9 (27%)
4	IPA	A	503	-	3,3,3	1.05	0	3,3,3	1.19	0
5	Z94	B	502[A]	2	17,18,18	1.69	5 (29%)	19,25,25	2.07	4 (21%)
5	Z94	B	502[B]	-	17,18,18	2.02	6 (35%)	19,25,25	1.89	5 (26%)
4	IPA	B	503	-	3,3,3	0.64	0	3,3,3	0.52	0

In the following table, the Chirals column lists the number of chiral outliers, the number of chiral centers analysed, the number of these observed in the model and the number defined in the chemical component dictionary. Similar counts are reported in the Torsion and Rings columns. '-' means no outliers of that kind were identified.

Mol	Type	Chain	Res	Link	Chirals	Torsions	Rings
3	INN	A	502	2	-	0/40/40/40	0/0/0/0
4	IPA	A	503	-	-	0/0/0/0	0/0/0/0
5	Z94	B	502[A]	2	-	0/8/20/20	0/2/2/2
5	Z94	B	502[B]	-	1/1/4/7	0/8/20/20	0/2/2/2
4	IPA	B	503	-	-	0/0/0/0	0/0/0/0

All (18) bond length outliers are listed below:

Mol	Chain	Res	Type	Atoms	Z	Observed(Å)	Ideal(Å)
5	B	502[A]	Z94	C1-C3	-3.55	1.49	1.53
5	B	502[B]	Z94	C1-C3	-3.00	1.50	1.53
5	B	502[A]	Z94	C11-C6	2.01	1.42	1.38
3	A	502	INN	C13-N3	2.04	1.37	1.33
3	A	502	INN	CA-C4	2.05	1.55	1.51
5	B	502[B]	Z94	C10-C13	2.12	1.42	1.39
5	B	502[B]	Z94	C11-C6	2.13	1.42	1.38
5	B	502[A]	Z94	C6-C2	2.14	1.42	1.39
3	A	502	INN	C8-C6	2.27	1.58	1.53
3	A	502	INN	C0-CA	2.40	1.58	1.53

Continued on next page...

Continued from previous page...

Mol	Chain	Res	Type	Atoms	Z	Observed(Å)	Ideal(Å)
3	A	502	INN	C4-N1	2.48	1.39	1.34
5	B	502[B]	Z94	C15-N14	2.74	1.40	1.36
5	B	502[B]	Z94	C9-N4	2.88	1.39	1.35
3	A	502	INN	C10-N2	3.03	1.41	1.34
5	B	502[A]	Z94	C5-C2	3.04	1.44	1.39
5	B	502[A]	Z94	C9-N4	3.13	1.39	1.35
3	A	502	INN	C-N	3.18	1.35	1.32
5	B	502[B]	Z94	C5-C2	4.93	1.47	1.39

All (18) bond angle outliers are listed below:

Mol	Chain	Res	Type	Atoms	Z	Observed(°)	Ideal(°)
3	A	502	INN	O4-N-C	-6.02	110.45	119.56
3	A	502	INN	C13-C11-N2	-5.29	98.45	111.67
3	A	502	INN	C6-C5-N1	-4.57	107.27	112.34
5	B	502[A]	Z94	C16-C15-N14	-3.41	110.12	114.97
3	A	502	INN	C5-C10-N2	-2.82	111.48	115.46
5	B	502[B]	Z94	C13-N14-C15	-2.75	123.78	128.03
3	A	502	INN	CA-C4-N1	-2.51	112.33	116.30
5	B	502[B]	Z94	C11-C13-C10	2.04	121.89	119.06
3	A	502	INN	O1-C4-N1	2.06	126.97	122.93
3	A	502	INN	C9-C6-C5	2.35	114.61	109.75
5	B	502[A]	Z94	O8-C3-N7	2.74	128.14	124.83
5	B	502[B]	Z94	C2-C1-C3	3.13	117.10	111.58
5	B	502[B]	Z94	O8-C3-N7	3.27	128.78	124.83
5	B	502[B]	Z94	O17-C15-N14	3.95	127.84	123.13
3	A	502	INN	O-C-N	4.20	128.50	123.53
5	B	502[A]	Z94	O17-C15-N14	4.66	128.69	123.13
3	A	502	INN	C12-C11-N2	4.75	119.27	110.31
5	B	502[A]	Z94	C2-C1-C3	4.99	120.38	111.58

All (1) chirality outliers are listed below:

Mol	Chain	Res	Type	Atom
5	B	502[B]	Z94	C1

There are no torsion outliers.

There are no ring outliers.

3 monomers are involved in 5 short contacts:

Mol	Chain	Res	Type	Clashes	Symm-Clashes
3	A	502	INN	2	0
5	B	502[B]	Z94	3	0
4	B	503	IPA	1	0

5.7 Other polymers [i](#)

There are no such residues in this entry.

5.8 Polymer linkage issues [i](#)

There are no chain breaks in this entry.

6 Fit of model and data ⓘ

6.1 Protein, DNA and RNA chains ⓘ

In the following table, the column labelled ‘#RSRZ> 2’ contains the number (and percentage) of RSRZ outliers, followed by percent RSRZ outliers for the chain as percentile scores relative to all X-ray entries and entries of similar resolution. The OWAB column contains the minimum, median, 95th percentile and maximum values of the occupancy-weighted average B-factor per residue. The column labelled ‘Q< 0.9’ lists the number of (and percentage) of residues with an average occupancy less than 0.9.

Mol	Chain	Analysed	<RSRZ>	#RSRZ>2	OWAB(Å ²)	Q<0.9
1	A	254/270 (94%)	0.20	12 (4%) 35 39	16, 25, 51, 62	0
1	B	254/270 (94%)	0.56	16 (6%) 23 26	20, 34, 57, 75	0
All	All	508/540 (94%)	0.38	28 (5%) 29 32	16, 30, 55, 75	0

All (28) RSRZ outliers are listed below:

Mol	Chain	Res	Type	RSRZ
1	A	271	GLY	4.3
1	A	221	MET	4.3
1	B	459	TYR	3.9
1	B	466	ALA	3.8
1	B	238	TYR	3.8
1	B	361	HIS	3.8
1	B	220	PRO	3.3
1	A	355	SER	3.3
1	A	440	VAL	3.3
1	B	294	GLY	3.1
1	B	270	ALA	3.0
1	B	240	GLY	3.0
1	A	220	PRO	2.9
1	B	359	ASN	2.8
1	B	271	GLY	2.7
1	B	293	PRO	2.7
1	A	258	VAL	2.5
1	B	304	TYR	2.5
1	B	272	PHE	2.4
1	A	399	ALA	2.4
1	A	360	SER	2.3
1	A	361	HIS	2.3
1	B	467	GLN	2.3
1	A	428	ASP	2.2

Continued on next page...

Continued from previous page...

Mol	Chain	Res	Type	RSRZ
1	A	402	VAL	2.2
1	B	323	PHE	2.1
1	A	251	LEU	2.1
1	B	356	PRO	2.0

6.2 Non-standard residues in protein, DNA, RNA chains [i](#)

There are no non-standard protein/DNA/RNA residues in this entry.

6.3 Carbohydrates [i](#)

There are no carbohydrates in this entry.

6.4 Ligands [i](#)

In the following table, the Atoms column lists the number of modelled atoms in the group and the number defined in the chemical component dictionary. LLDF column lists the quality of electron density of the group with respect to its neighbouring residues in protein, DNA or RNA chains. The B-factors column lists the minimum, median, 95th percentile and maximum values of B factors of atoms in the group. The column labelled 'Q< 0.9' lists the number of atoms with occupancy less than 0.9.

Mol	Type	Chain	Res	Atoms	RSCC	RSR	LLDF	B-factors(\AA^2)	Q<0.9
5	Z94	B	502[A]	17/17	0.82	0.31	8.37	17,26,36,36	17
5	Z94	B	502[B]	17/17	0.82	0.31	5.23	17,20,29,30	17
3	INN	A	502	29/29	0.85	0.18	2.09	23,35,59,60	0
4	IPA	B	503	4/4	0.91	0.15	0.58	36,37,38,39	0
4	IPA	A	503	4/4	0.97	0.10	-0.26	19,22,23,24	0
2	ZN	A	501	1/1	1.00	0.09	-	22,22,22,22	0
2	ZN	B	501	1/1	1.00	0.07	-	24,24,24,24	0

6.5 Other polymers [i](#)

There are no such residues in this entry.