



Full wwPDB X-ray Structure Validation Report ⓘ

Jan 31, 2016 – 08:36 PM GMT

PDB ID : 1L1E
Title : Crystal Structure of Mycolic Acid Cyclopropane Synthase PcaA Complexed with S-adenosyl-L-homocysteine
Authors : Huang, C.-C.; Smith, C.V.; Glickman, M.S.; Jacobs Jr., W.R.; Sacchettini, J.C.; TB Structural Genomics Consortium (TBSGC)
Deposited on : 2002-02-15
Resolution : 2.00 Å(reported)

This is a Full wwPDB X-ray Structure Validation Report for a publicly released PDB entry.
We welcome your comments at validation@mail.wwpdb.org
A user guide is available at
<http://wwpdb.org/validation/2016/XrayValidationReportHelp>
with specific help available everywhere you see the ⓘ symbol.

The following versions of software and data (see [references ⓘ](#)) were used in the production of this report:

MolProbity : 4.02b-467
Mogul : 1.7 (RC4), CSD as536be (2015)
Xtriage (Phenix) : 1.9-1692
EDS : rb-20026688
Percentile statistics : 20151230.v01 (using entries in the PDB archive December 30th 2015)
Refmac : 5.8.0135
CCP4 : 6.5.0
Ideal geometry (proteins) : Engh & Huber (2001)
Ideal geometry (DNA, RNA) : Parkinson et al. (1996)
Validation Pipeline (wwPDB-VP) : trunk26865

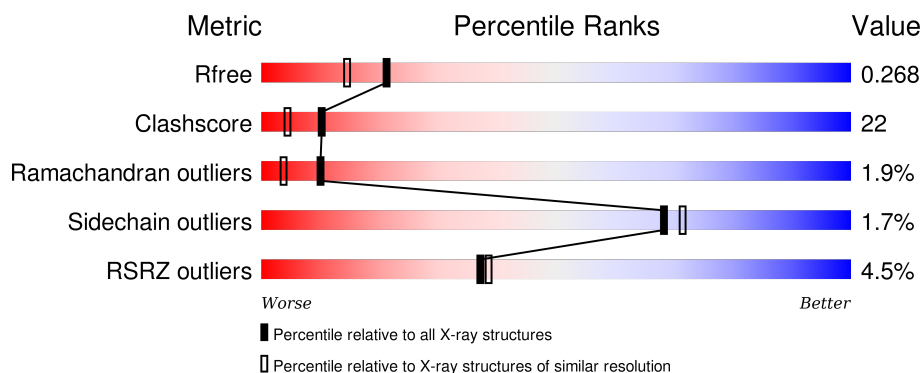
1 Overall quality at a glance

The following experimental techniques were used to determine the structure:

X-RAY DIFFRACTION

The reported resolution of this entry is 2.00 Å.

Percentile scores (ranging between 0-100) for global validation metrics of the entry are shown in the following graphic. The table shows the number of entries on which the scores are based.



Metric	Whole archive (#Entries)	Similar resolution (#Entries, resolution range(Å))
R_{free}	91344	6249 (2.00-2.00)
Clashscore	102246	7340 (2.00-2.00)
Ramachandran outliers	100387	7248 (2.00-2.00)
Sidechain outliers	100360	7247 (2.00-2.00)
RSRZ outliers	91569	6262 (2.00-2.00)

The table below summarises the geometric issues observed across the polymeric chains and their fit to the electron density. The red, orange, yellow and green segments on the lower bar indicate the fraction of residues that contain outliers for ≥ 3 , 2, 1 and 0 types of geometric quality criteria. A grey segment represents the fraction of residues that are not modelled. The numeric value for each fraction is indicated below the corresponding segment, with a dot representing fractions $\leq 5\%$. The upper red bar (where present) indicates the fraction of residues that have poor fit to the electron density. The numeric value is given above the bar.

Mol	Chain	Length	Quality of chain
1	A	287	<div> <div>5%</div> <div>68%</div> <div>23%</div> <div>• 5%</div> </div>
1	B	287	<div> <div>4%</div> <div>59%</div> <div>30%</div> <div>• 9%</div> </div>

2 Entry composition [i](#)

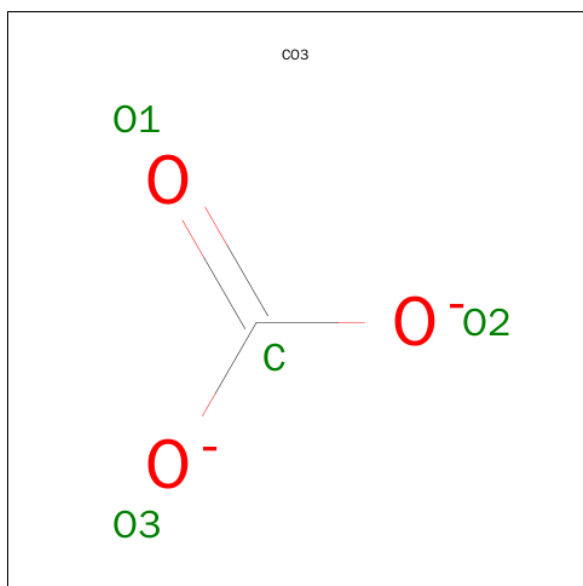
There are 4 unique types of molecules in this entry. The entry contains 4591 atoms, of which 0 are hydrogens and 0 are deuteriums.

In the tables below, the ZeroOcc column contains the number of atoms modelled with zero occupancy, the AltConf column contains the number of residues with at least one atom in alternate conformation and the Trace column contains the number of residues modelled with at most 2 atoms.

- Molecule 1 is a protein called mycolic acid synthase.

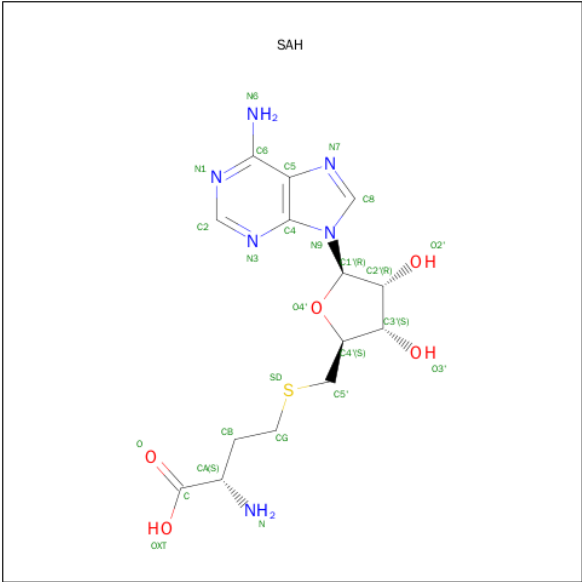
Mol	Chain	Residues	Atoms					ZeroOcc	AltConf	Trace
1	A	272	Total	C	N	O	S	0	0	0
			2213	1419	378	405	11			
1	B	260	Total	C	N	O	S	0	0	0
			2118	1362	360	385	11			

- Molecule 2 is CARBONATE ION (three-letter code: CO3) (formula: CO₃).



Mol	Chain	Residues	Atoms			ZeroOcc	AltConf
2	A	1	Total	C	O	0	0
			4	1	3		
2	B	1	Total	C	O	0	0
			4	1	3		

- Molecule 3 is S-ADENOSYL-L-HOMOCYSTEINE (three-letter code: SAH) (formula: C₁₄H₂₀N₆O₅S).



Mol	Chain	Residues	Atoms					ZeroOcc	AltConf
3	A	1	Total	C	N	O	S	0	0
			26	14	6	5	1		
3	B	1	Total	C	N	O	S	0	0
			26	14	6	5	1		

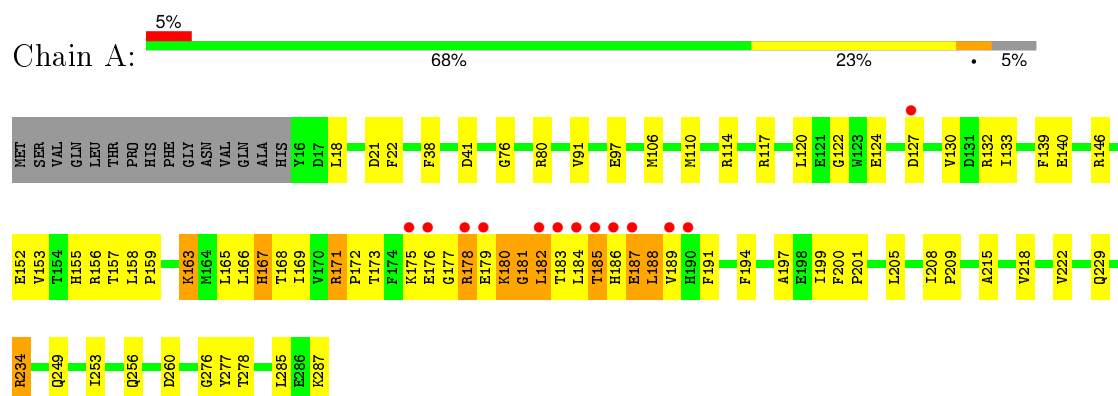
- Molecule 4 is water.

Mol	Chain	Residues	Atoms		ZeroOcc	AltConf
4	A	121	Total	O	0	0
			121	121		
4	B	79	Total	O	0	0
			79	79		

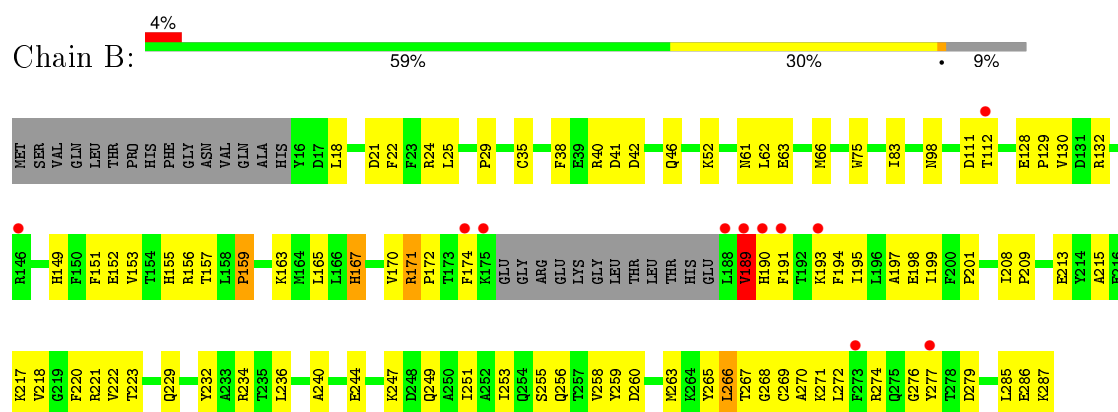
3 Residue-property plots [i](#)

These plots are drawn for all protein, RNA and DNA chains in the entry. The first graphic for a chain summarises the proportions of errors displayed in the second graphic. The second graphic shows the sequence view annotated by issues in geometry and electron density. Residues are color-coded according to the number of geometric quality criteria for which they contain at least one outlier: green = 0, yellow = 1, orange = 2 and red = 3 or more. A red dot above a residue indicates a poor fit to the electron density ($RSRZ > 2$). Stretches of 2 or more consecutive residues without any outlier are shown as a green connector. Residues present in the sample, but not in the model, are shown in grey.

• Molecule 1: mycolic acid synthase



• Molecule 1: mycolic acid synthase



4 Data and refinement statistics

Property	Value	Source
Space group	P 65	Depositor
Cell constants a, b, c, α , β , γ	45.34Å 45.34Å 446.02Å 90.00° 90.00° 120.00°	Depositor
Resolution (Å)	28.21 – 2.00 28.21 – 2.01	Depositor EDS
% Data completeness (in resolution range)	95.7 (28.21-2.00) 97.9 (28.21-2.01)	Depositor EDS
R_{merge}	(Not available)	Depositor
R_{sym}	(Not available)	Depositor
$\langle I/\sigma(I) \rangle$ ¹	8.20 (at 2.01Å)	Xtriage
Refinement program	CNS 1.0	Depositor
R, R_{free}	0.222 , 0.270 0.221 , 0.268	Depositor DCC
R_{free} test set	1619 reflections (4.96%)	DCC
Wilson B-factor (Å ²)	27.7	Xtriage
Anisotropy	0.115	Xtriage
Bulk solvent k_{sol} (e/Å ³), B_{sol} (Å ²)	0.31 , 21.2	EDS
Estimated twinning fraction	0.268 for h,-h-k,-l	Xtriage
L-test for twinning ²	$\langle L \rangle = 0.40$, $\langle L^2 \rangle = 0.23$	Xtriage
Outliers	0 of 33417 reflections	Xtriage
F_o, F_c correlation	0.95	EDS
Total number of atoms	4591	wwPDB-VP
Average B, all atoms (Å ²)	33.0	wwPDB-VP

Xtriage's analysis on translational NCS is as follows: *The largest off-origin peak in the Patterson function is 7.24% of the height of the origin peak. No significant pseudotranslation is detected.*

¹Intensities estimated from amplitudes.

²Theoretical values of $\langle |L| \rangle$, $\langle L^2 \rangle$ for acentric reflections are 0.5, 0.375 respectively for untwinned datasets, and 0.333, 0.2 for perfectly twinned datasets.

5 Model quality [i](#)

5.1 Standard geometry [i](#)

Bond lengths and bond angles in the following residue types are not validated in this section: CO3, SAH

The Z score for a bond length (or angle) is the number of standard deviations the observed value is removed from the expected value. A bond length (or angle) with $|Z| > 5$ is considered an outlier worth inspection. RMSZ is the root-mean-square of all Z scores of the bond lengths (or angles).

Mol	Chain	Bond lengths		Bond angles	
		RMSZ	$\# Z > 5$	RMSZ	$\# Z > 5$
1	A	0.43	0/2268	0.71	4/3069 (0.1%)
1	B	0.35	0/2171	0.61	1/2938 (0.0%)
All	All	0.40	0/4439	0.67	5/6007 (0.1%)

There are no bond length outliers.

All (5) bond angle outliers are listed below:

Mol	Chain	Res	Type	Atoms	Z	Observed(°)	Ideal(°)
1	A	178	ARG	NE-CZ-NH2	7.38	123.99	120.30
1	A	171	ARG	NE-CZ-NH2	7.15	123.88	120.30
1	B	171	ARG	NE-CZ-NH2	6.73	123.66	120.30
1	A	76	GLY	N-CA-C	5.22	126.16	113.10
1	A	185	THR	CB-CA-C	-5.22	97.49	111.60

There are no chirality outliers.

There are no planarity outliers.

5.2 Too-close contacts [i](#)

In the following table, the Non-H and H(model) columns list the number of non-hydrogen atoms and hydrogen atoms in the chain respectively. The H(added) column lists the number of hydrogen atoms added and optimized by MolProbity. The Clashes column lists the number of clashes within the asymmetric unit, whereas Symm-Clashes lists symmetry related clashes.

Mol	Chain	Non-H	H(model)	H(added)	Clashes	Symm-Clashes
1	A	2213	0	2166	103	1
1	B	2118	0	2072	85	0
2	A	4	0	0	0	0
2	B	4	0	0	0	0

Continued on next page...

Continued from previous page...

Mol	Chain	Non-H	H(model)	H(added)	Clashes	Symm-Clashes
3	A	26	0	19	0	0
3	B	26	0	19	0	0
4	A	121	0	0	4	0
4	B	79	0	0	6	0
All	All	4591	0	4276	188	1

The all-atom clashscore is defined as the number of clashes found per 1000 atoms (including hydrogen atoms). The all-atom clashscore for this structure is 22.

All (188) close contacts within the same asymmetric unit are listed below, sorted by their clash magnitude.

Atom-1	Atom-2	Interatomic distance (Å)	Clash overlap (Å)
1:A:176:GLU:HB3	1:A:182:LEU:CD2	1.39	1.51
1:A:185:THR:HG21	1:A:186:HIS:CD2	1.56	1.37
1:A:185:THR:CG2	1:A:186:HIS:CD2	2.12	1.33
1:A:176:GLU:CB	1:A:182:LEU:CD2	2.22	1.15
1:A:176:GLU:OE1	1:A:180:LYS:CE	1.85	1.14
1:A:176:GLU:OE1	1:A:180:LYS:HE2	1.42	1.09
1:A:176:GLU:HB3	1:A:182:LEU:HD23	1.09	1.06
1:A:176:GLU:CB	1:A:182:LEU:HD21	1.89	0.99
1:A:176:GLU:HB3	1:A:182:LEU:HD21	1.44	0.97
1:A:179:GLU:HG3	1:A:180:LYS:H	1.30	0.96
1:A:185:THR:HG22	1:A:186:HIS:CD2	1.99	0.96
1:A:185:THR:HG22	1:A:186:HIS:N	1.85	0.91
1:B:63:GLU:H	1:B:66:MET:CE	1.85	0.90
1:B:170:VAL:HG21	1:B:208:ILE:HD13	1.54	0.88
1:B:163:LYS:HG2	1:B:286:GLU:HG2	1.55	0.86
1:A:185:THR:HG21	1:A:186:HIS:HD2	0.95	0.86
1:A:176:GLU:O	1:A:179:GLU:O	1.92	0.86
1:B:63:GLU:H	1:B:66:MET:HE1	1.40	0.85
1:A:185:THR:O	1:A:189:VAL:HB	1.78	0.83
1:A:178:ARG:HD3	1:A:178:ARG:O	1.79	0.83
1:A:176:GLU:C	1:A:179:GLU:O	2.18	0.82
1:A:185:THR:HG22	1:A:186:HIS:CG	2.14	0.82
1:A:176:GLU:OE1	1:A:180:LYS:HE3	1.79	0.80
1:B:215:ALA:O	1:B:220:PHE:HB2	1.82	0.79
1:B:249:GLN:HE21	1:B:253:ILE:HG13	1.47	0.78
1:B:24:ARG:HB3	1:B:24:ARG:NH1	1.99	0.78
1:B:189:VAL:HG12	1:B:190:HIS:HD2	1.48	0.78
1:A:176:GLU:O	1:A:182:LEU:HD21	1.84	0.77
1:B:263:MET:O	1:B:267:THR:HG22	1.86	0.76

Continued on next page...

Continued from previous page...

Atom-1	Atom-2	Interatomic distance (Å)	Clash overlap (Å)
1:A:180:LYS:HG3	1:A:182:LEU:HD23	1.66	0.75
1:B:271:LYS:HA	1:B:274:ARG:HD2	1.67	0.74
1:B:62:LEU:HA	1:B:66:MET:HE1	1.69	0.72
1:A:249:GLN:HE21	1:A:253:ILE:HD11	1.54	0.72
1:A:185:THR:O	1:A:189:VAL:CG2	2.38	0.71
1:B:267:THR:HG23	1:B:267:THR:O	1.90	0.71
1:A:179:GLU:HG3	1:A:180:LYS:N	2.05	0.69
1:A:187:GLU:O	1:A:188:LEU:HG	1.92	0.69
1:A:173:THR:HG23	1:A:175:LYS:HG3	1.74	0.69
1:A:180:LYS:O	1:A:182:LEU:N	2.25	0.69
1:A:176:GLU:CB	1:A:182:LEU:HD23	2.04	0.68
1:A:176:GLU:C	1:A:182:LEU:HD21	2.15	0.67
1:A:249:GLN:HE21	1:A:253:ILE:CD1	2.08	0.67
1:B:189:VAL:HG12	1:B:190:HIS:CD2	2.28	0.67
1:A:185:THR:O	1:A:189:VAL:CB	2.43	0.66
1:A:185:THR:CG2	1:A:186:HIS:N	2.44	0.64
1:B:170:VAL:HG22	1:B:171:ARG:N	2.14	0.63
1:A:146:ARG:HD2	4:A:1015:HOH:O	1.99	0.63
1:A:173:THR:CG2	1:A:175:LYS:HE3	2.29	0.63
1:B:83:ILE:HA	4:B:982:HOH:O	1.99	0.62
1:B:24:ARG:HB3	1:B:24:ARG:HH11	1.65	0.62
1:B:276:GLY:O	1:B:277:TYR:HB2	2.00	0.61
1:B:111:ASP:O	1:B:112:THR:HG23	2.00	0.60
1:B:21:ASP:O	1:B:25:LEU:HG	2.02	0.60
1:A:176:GLU:CA	1:A:182:LEU:HD21	2.31	0.60
1:A:132:ARG:HD2	1:A:163:LYS:HG2	1.84	0.59
1:B:191:PHE:CE2	1:B:195:ILE:HD11	2.37	0.59
1:B:159:PRO:O	1:B:287:LYS:HD3	2.02	0.58
1:B:208:ILE:HB	1:B:209:PRO:HD3	1.86	0.58
1:B:271:LYS:HG2	4:B:983:HOH:O	2.02	0.58
1:B:152:GLU:HA	1:B:218:VAL:HG11	1.86	0.58
1:A:38:PHE:CZ	1:A:234:ARG:HD2	2.39	0.58
1:A:132:ARG:NE	1:A:163:LYS:HD3	2.19	0.57
1:A:186:HIS:C	1:A:188:LEU:H	2.07	0.57
1:A:187:GLU:O	1:A:188:LEU:CG	2.51	0.57
1:A:188:LEU:HD11	1:A:277:TYR:CE2	2.39	0.57
1:B:170:VAL:HG21	1:B:208:ILE:CD1	2.30	0.57
1:B:149:HIS:O	1:B:153:VAL:HG23	2.04	0.56
1:A:168:THR:HG22	1:A:169:ILE:O	2.04	0.56
1:A:155:HIS:CE1	1:A:287:LYS:HG3	2.40	0.56
1:B:213:GLU:HG2	1:B:217:LYS:HE3	1.87	0.56

Continued on next page...

Continued from previous page...

Atom-1	Atom-2	Interatomic distance (Å)	Clash overlap (Å)
1:A:197:ALA:O	1:A:201:PRO:HG3	2.06	0.56
1:A:187:GLU:O	1:A:188:LEU:CD2	2.54	0.56
1:A:124:GLU:H	1:A:124:GLU:CD	2.09	0.56
1:A:124:GLU:OE1	1:A:146:ARG:NH2	2.38	0.56
1:A:97:GLU:OE1	1:A:97:GLU:HA	2.06	0.56
1:A:187:GLU:O	1:A:188:LEU:HD23	2.06	0.56
1:B:132:ARG:HH11	1:B:132:ARG:HG3	1.71	0.55
1:B:201:PRO:HG2	4:B:977:HOH:O	2.04	0.55
1:A:106:MET:HG2	1:A:110:MET:CE	2.37	0.55
1:B:75:TRP:HE1	1:B:98:ASN:ND2	2.05	0.55
1:B:256:GLN:HG3	1:B:260:ASP:OD2	2.07	0.54
1:B:63:GLU:H	1:B:66:MET:HE2	1.68	0.54
1:A:18:LEU:HD21	1:A:22:PHE:CD2	2.43	0.54
1:B:189:VAL:O	1:B:193:LYS:HB3	2.08	0.54
1:B:63:GLU:N	1:B:66:MET:HE1	2.16	0.54
1:B:229:GLN:HB2	1:B:279:ASP:OD1	2.08	0.54
1:A:106:MET:HG2	1:A:110:MET:HE3	1.90	0.53
1:B:163:LYS:HE2	1:B:286:GLU:CD	2.27	0.53
1:B:277:TYR:HB3	4:B:970:HOH:O	2.07	0.53
1:A:208:ILE:HB	1:A:209:PRO:HD3	1.91	0.53
1:A:172:PRO:HD3	1:A:278:THR:HA	1.89	0.53
1:B:247:LYS:HB3	4:B:915:HOH:O	2.08	0.53
1:A:179:GLU:O	1:A:180:LYS:HB3	2.08	0.53
1:B:172:PRO:HD2	1:B:277:TYR:O	2.09	0.52
1:B:130:VAL:O	1:B:159:PRO:HD3	2.09	0.52
1:B:269:CYS:HA	1:B:272:LEU:HD22	1.90	0.52
1:A:191:PHE:O	1:A:194:PHE:HB3	2.09	0.51
1:B:172:PRO:HD2	1:B:277:TYR:C	2.30	0.51
1:B:40:ARG:O	1:B:42:ASP:N	2.43	0.51
1:B:29:PRO:HG2	1:B:46:GLN:OE1	2.11	0.51
1:B:40:ARG:C	1:B:42:ASP:H	2.15	0.50
1:B:128:GLU:HG3	1:B:129:PRO:HD2	1.92	0.50
1:A:168:THR:HG22	1:A:169:ILE:N	2.27	0.50
1:A:180:LYS:O	1:A:182:LEU:HG	2.11	0.49
1:B:236:LEU:HD12	1:B:270:ALA:HA	1.93	0.49
1:A:249:GLN:NE2	1:A:253:ILE:HD11	2.26	0.49
1:A:222:VAL:HG22	1:A:285:LEU:HD22	1.95	0.49
1:A:256:GLN:HG3	1:A:260:ASP:OD2	2.13	0.49
1:B:218:VAL:HG12	1:B:218:VAL:O	2.12	0.49
1:A:80:ARG:NH1	1:A:110:MET:HE2	2.27	0.48
1:A:188:LEU:CD1	1:A:277:TYR:CE2	2.97	0.48

Continued on next page...

Continued from previous page...

Atom-1	Atom-2	Interatomic distance (Å)	Clash overlap (Å)
1:A:139:PHE:HB3	1:A:168:THR:OG1	2.13	0.48
1:A:80:ARG:NH1	1:A:110:MET:CE	2.76	0.48
1:B:18:LEU:HD13	1:B:22:PHE:CD2	2.49	0.48
1:B:265:TYR:CE1	1:B:269:CYS:SG	3.06	0.47
1:B:244:GLU:HA	1:B:259:TYR:OH	2.14	0.47
1:B:153:VAL:O	1:B:157:THR:HG23	2.13	0.47
1:B:38:PHE:CD1	1:B:234:ARG:HD2	2.49	0.47
1:B:155:HIS:CD2	1:B:218:VAL:O	2.67	0.47
1:A:215:ALA:O	1:A:218:VAL:HG22	2.15	0.47
1:B:269:CYS:O	1:B:272:LEU:HB2	2.14	0.46
1:A:184:LEU:HD12	4:A:955:HOH:O	2.14	0.46
1:A:176:GLU:HB3	1:A:182:LEU:HD22	1.70	0.46
1:A:249:GLN:HE21	1:A:253:ILE:CG1	2.28	0.46
1:B:151:PHE:CE2	1:B:215:ALA:HB2	2.51	0.46
1:A:97:GLU:OE1	1:A:120:LEU:HD22	2.16	0.46
1:A:222:VAL:HG22	1:A:285:LEU:CD2	2.45	0.46
1:A:152:GLU:OE2	1:A:156:ARG:NH1	2.50	0.45
1:B:132:ARG:HD3	1:B:163:LYS:H	1.82	0.45
1:B:24:ARG:CB	1:B:24:ARG:HH11	2.28	0.45
1:B:199:ILE:HG13	1:B:265:TYR:CD1	2.51	0.45
1:B:247:LYS:O	1:B:251:ILE:HG13	2.17	0.45
1:A:106:MET:HE1	4:A:959:HOH:O	2.17	0.45
1:B:38:PHE:CG	1:B:234:ARG:HD2	2.52	0.45
1:A:91:VAL:HA	1:A:117:ARG:O	2.17	0.45
1:A:185:THR:O	1:A:189:VAL:HG21	2.14	0.45
1:A:173:THR:HG22	1:A:175:LYS:HE3	1.98	0.44
1:A:165:LEU:HD13	1:A:165:LEU:C	2.37	0.44
1:A:187:GLU:C	1:A:188:LEU:HG	2.38	0.44
1:B:63:GLU:N	1:B:66:MET:CE	2.68	0.44
1:B:267:THR:CG2	1:B:267:THR:O	2.62	0.44
1:A:200:PHE:N	1:A:201:PRO:HD3	2.32	0.44
1:A:199:ILE:C	1:A:201:PRO:HD3	2.38	0.44
1:A:41:ASP:OD1	1:A:234:ARG:NH2	2.50	0.44
1:A:122:GLY:HA3	1:A:124:GLU:OE2	2.18	0.44
1:A:140:GLU:HG3	1:A:168:THR:HG23	1.99	0.44
1:A:153:VAL:O	1:A:157:THR:HG23	2.18	0.44
1:B:170:VAL:CG2	1:B:171:ARG:N	2.80	0.44
1:B:153:VAL:HA	1:B:156:ARG:NH1	2.33	0.43
1:A:167:HIS:CD2	1:A:167:HIS:C	2.91	0.43
1:B:165:LEU:C	1:B:165:LEU:HD13	2.38	0.43
1:A:177:GLY:C	1:A:179:GLU:H	2.20	0.43

Continued on next page...

Continued from previous page...

Atom-1	Atom-2	Interatomic distance (Å)	Clash overlap (Å)
1:A:181:GLY:C	1:A:183:THR:H	2.21	0.43
1:A:229:GLN:NE2	1:A:276:GLY:HA2	2.32	0.43
1:B:256:GLN:HE21	1:B:260:ASP:CG	2.22	0.43
1:A:171:ARG:HD2	1:A:205:LEU:O	2.19	0.43
1:A:130:VAL:O	1:A:159:PRO:HD3	2.19	0.43
1:B:222:VAL:HG22	1:B:285:LEU:CD2	2.49	0.43
1:A:256:GLN:HB3	4:A:936:HOH:O	2.18	0.43
1:B:170:VAL:HG22	1:B:171:ARG:H	1.84	0.42
1:A:179:GLU:CG	1:A:180:LYS:H	2.14	0.42
1:A:140:GLU:CD	1:A:168:THR:HG23	2.40	0.42
1:A:176:GLU:OE2	1:A:180:LYS:HE2	2.12	0.42
1:B:191:PHE:HA	1:B:194:PHE:HB3	2.01	0.42
1:A:175:LYS:C	1:A:177:GLY:H	2.22	0.42
1:B:61:ASN:O	1:B:132:ARG:NH1	2.53	0.42
1:B:255:SER:OG	1:B:258:VAL:HG23	2.20	0.42
1:A:124:GLU:CD	1:A:146:ARG:HH22	2.23	0.41
1:B:194:PHE:HD1	1:B:198:GLU:OE1	2.03	0.41
1:A:168:THR:CG2	1:A:169:ILE:N	2.83	0.41
1:B:240:ALA:HB2	1:B:266:LEU:HB3	2.02	0.41
1:A:186:HIS:C	1:A:188:LEU:N	2.73	0.41
1:B:221:ARG:HG3	1:B:223:THR:HG23	2.02	0.41
1:B:62:LEU:HA	1:B:66:MET:CE	2.44	0.41
1:B:52:LYS:HB3	1:B:52:LYS:HE2	1.90	0.41
1:A:180:LYS:HD2	1:A:180:LYS:HA	1.81	0.41
1:A:256:GLN:HE21	1:A:260:ASP:CG	2.24	0.41
1:B:35:CYS:HB2	1:B:232:TYR:CD1	2.56	0.41
1:A:132:ARG:HE	1:A:163:LYS:HD3	1.84	0.41
1:B:189:VAL:O	1:B:193:LYS:CB	2.69	0.41
1:B:213:GLU:CG	1:B:217:LYS:HE3	2.50	0.41
1:B:152:GLU:HA	1:B:218:VAL:CG1	2.50	0.40
1:A:114:ARG:HA	1:A:114:ARG:HD3	1.93	0.40
1:B:270:ALA:HB3	4:B:983:HOH:O	2.20	0.40
1:B:167:HIS:CD2	1:B:167:HIS:C	2.94	0.40
1:B:193:LYS:O	1:B:197:ALA:N	2.54	0.40
1:A:133:ILE:HG13	1:A:158:LEU:HD21	2.04	0.40
1:B:272:LEU:C	1:B:274:ARG:H	2.25	0.40

All (1) symmetry-related close contacts are listed below. The label for Atom-2 includes the symmetry operator and encoded unit-cell translations to be applied.

Atom-1	Atom-2	Interatomic distance (Å)	Clash overlap (Å)
1:A:127:ASP:OD2	1:A:179:GLU:OE2[1_455]	1.87	0.33

5.3 Torsion angles [i](#)

5.3.1 Protein backbone [i](#)

In the following table, the Percentiles column shows the percent Ramachandran outliers of the chain as a percentile score with respect to all X-ray entries followed by that with respect to entries of similar resolution.

The Analysed column shows the number of residues for which the backbone conformation was analysed, and the total number of residues.

Mol	Chain	Analysed	Favoured	Allowed	Outliers	Percentiles	
1	A	270/287 (94%)	253 (94%)	13 (5%)	4 (2%)	13	5
1	B	256/287 (89%)	236 (92%)	14 (6%)	6 (2%)	8	3
All	All	526/574 (92%)	489 (93%)	27 (5%)	10 (2%)	10	4

All (10) Ramachandran outliers are listed below:

Mol	Chain	Res	Type
1	A	181	GLY
1	A	182	LEU
1	B	189	VAL
1	A	188	LEU
1	B	41	ASP
1	B	174	PHE
1	B	268	GLY
1	B	159	PRO
1	B	266	LEU
1	A	187	GLU

5.3.2 Protein sidechains [i](#)

In the following table, the Percentiles column shows the percent sidechain outliers of the chain as a percentile score with respect to all X-ray entries followed by that with respect to entries of similar resolution.

The Analysed column shows the number of residues for which the sidechain conformation was analysed, and the total number of residues.

Mol	Chain	Analysed	Rotameric	Outliers	Percentiles	
1	A	235/248 (95%)	229 (97%)	6 (3%)	54	54
1	B	225/248 (91%)	223 (99%)	2 (1%)	84	88
All	All	460/496 (93%)	452 (98%)	8 (2%)	68	71

All (8) residues with a non-rotameric sidechain are listed below:

Mol	Chain	Res	Type
1	A	21	ASP
1	A	163	LYS
1	A	166	LEU
1	A	167	HIS
1	A	180	LYS
1	A	234	ARG
1	B	167	HIS
1	B	189	VAL

Some sidechains can be flipped to improve hydrogen bonding and reduce clashes. All (18) such sidechains are listed below:

Mol	Chain	Res	Type
1	A	31	GLN
1	A	99	GLN
1	A	109	GLN
1	A	141	HIS
1	A	149	HIS
1	A	155	HIS
1	A	186	HIS
1	A	246	ASN
1	A	249	GLN
1	A	256	GLN
1	A	275	GLN
1	B	61	ASN
1	B	98	ASN
1	B	99	GLN
1	B	109	GLN
1	B	155	HIS
1	B	190	HIS
1	B	249	GLN

5.3.3 RNA ⓘ

There are no RNA molecules in this entry.

5.4 Non-standard residues in protein, DNA, RNA chains ⓘ

There are no non-standard protein/DNA/RNA residues in this entry.

5.5 Carbohydrates ⓘ

There are no carbohydrates in this entry.

5.6 Ligand geometry ⓘ

4 ligands are modelled in this entry.

In the following table, the Counts columns list the number of bonds (or angles) for which Mogul statistics could be retrieved, the number of bonds (or angles) that are observed in the model and the number of bonds (or angles) that are defined in the chemical component dictionary. The Link column lists molecule types, if any, to which the group is linked. The Z score for a bond length (or angle) is the number of standard deviations the observed value is removed from the expected value. A bond length (or angle) with $|Z| > 2$ is considered an outlier worth inspection. RMSZ is the root-mean-square of all Z scores of the bond lengths (or angles).

Mol	Type	Chain	Res	Link	Bond lengths			Bond angles		
					Counts	RMSZ	$\# Z > 2$	Counts	RMSZ	$\# Z > 2$
3	SAH	A	900	-	20,28,28	1.23	2 (10%)	19,40,40	0.77	0
2	CO3	A	903	-	0,3,3	0.00	-	0,3,3	0.00	-
3	SAH	B	901	-	20,28,28	1.19	2 (10%)	19,40,40	0.81	0
2	CO3	B	904	-	0,3,3	0.00	-	0,3,3	0.00	-

In the following table, the Chirals column lists the number of chiral outliers, the number of chiral centers analysed, the number of these observed in the model and the number defined in the chemical component dictionary. Similar counts are reported in the Torsion and Rings columns. '-' means no outliers of that kind were identified.

Mol	Type	Chain	Res	Link	Chirals	Torsions	Rings
3	SAH	A	900	-	-	0/7/31/31	0/3/3/3
2	CO3	A	903	-	-	0/0/0/0	0/0/0/0
3	SAH	B	901	-	-	0/7/31/31	0/3/3/3
2	CO3	B	904	-	-	0/0/0/0	0/0/0/0

All (4) bond length outliers are listed below:

Mol	Chain	Res	Type	Atoms	Z	Observed(Å)	Ideal(Å)
3	A	900	SAH	C8-N7	-2.59	1.29	1.34
3	B	901	SAH	C8-N7	-2.47	1.29	1.34

Continued on next page...

Continued from previous page...

Mol	Chain	Res	Type	Atoms	Z	Observed(Å)	Ideal(Å)
3	B	901	SAH	O4'-C1'	3.27	1.45	1.41
3	A	900	SAH	O4'-C1'	3.45	1.45	1.41

There are no bond angle outliers.

There are no chirality outliers.

There are no torsion outliers.

There are no ring outliers.

No monomer is involved in short contacts.

5.7 Other polymers [i](#)

There are no such residues in this entry.

5.8 Polymer linkage issues [i](#)

There are no chain breaks in this entry.

6 Fit of model and data

6.1 Protein, DNA and RNA chains

In the following table, the column labelled ‘#RSRZ> 2’ contains the number (and percentage) of RSRZ outliers, followed by percent RSRZ outliers for the chain as percentile scores relative to all X-ray entries and entries of similar resolution. The OWAB column contains the minimum, median, 95th percentile and maximum values of the occupancy-weighted average B-factor per residue. The column labelled ‘Q< 0.9’ lists the number of (and percentage) of residues with an average occupancy less than 0.9.

Mol	Chain	Analysed	<RSRZ>	#RSRZ>2	OWAB(Å ²)	Q<0.9
1	A	272/287 (94%)	-0.04	13 (4%) 34 36	15, 26, 61, 81	14 (5%)
1	B	260/287 (90%)	0.33	11 (4%) 40 41	20, 37, 59, 82	14 (5%)
All	All	532/574 (92%)	0.14	24 (4%) 37 38	15, 31, 60, 82	28 (5%)

All (24) RSRZ outliers are listed below:

Mol	Chain	Res	Type	RSRZ
1	B	277	TYR	8.0
1	B	189	VAL	6.6
1	A	183	THR	6.5
1	B	174	PHE	5.9
1	A	178	ARG	5.0
1	A	187	GLU	4.9
1	B	190	HIS	4.5
1	A	189	VAL	4.4
1	B	188	LEU	4.3
1	B	193	LYS	4.2
1	B	175	LYS	4.0
1	A	175	LYS	3.8
1	A	176	GLU	3.7
1	A	184	LEU	3.5
1	A	185	THR	3.4
1	A	186	HIS	3.1
1	A	190	HIS	3.0
1	A	182	LEU	2.6
1	A	179	GLU	2.4
1	B	146	ARG	2.3
1	B	112	THR	2.1
1	B	273	PHE	2.1
1	B	191	PHE	2.0
1	A	127	ASP	2.0

6.2 Non-standard residues in protein, DNA, RNA chains [i](#)

There are no non-standard protein/DNA/RNA residues in this entry.

6.3 Carbohydrates [i](#)

There are no carbohydrates in this entry.

6.4 Ligands [i](#)

In the following table, the Atoms column lists the number of modelled atoms in the group and the number defined in the chemical component dictionary. LLDF column lists the quality of electron density of the group with respect to its neighbouring residues in protein, DNA or RNA chains. The B-factors column lists the minimum, median, 95th percentile and maximum values of B factors of atoms in the group. The column labelled 'Q< 0.9' lists the number of atoms with occupancy less than 0.9.

Mol	Type	Chain	Res	Atoms	RSCC	RSR	LLDF	B-factors(\AA^2)	Q<0.9
2	CO3	B	904	4/4	0.94	0.12	0.20	30,32,34,36	0
3	SAH	A	900	26/26	0.97	0.09	-0.40	15,19,23,25	0
3	SAH	B	901	26/26	0.94	0.09	-0.97	25,28,31,33	0
2	CO3	A	903	4/4	0.95	0.09	-1.15	19,21,24,26	0

6.5 Other polymers [i](#)

There are no such residues in this entry.