



# wwPDB X-ray Structure Validation Summary Report ⓘ

Oct 31, 2016 – 07:47 PM EDT

PDB ID : 5L32  
Title : Crystal structure of the Zn-RIDC1 complex bearing six interfacial disulfide bonds  
Authors : Churchfield, L.A.; Tezcan, F.A.  
Deposited on : 2016-08-02  
Resolution : 2.10 Å(reported)

This is a wwPDB X-ray Structure Validation Summary Report for a publicly released PDB entry.

We welcome your comments at [validation@mail.wwpdb.org](mailto:validation@mail.wwpdb.org)

A user guide is available at

<http://wwpdb.org/validation/2016/XrayValidationReportHelp>

with specific help available everywhere you see the ⓘ symbol.

---

The following versions of software and data (see [references ⓘ](#)) were used in the production of this report:

MolProbity : 4.02b-467  
Mogul : 1.7.1 (RC1), CSD as537be (2016)  
Xtriage (Phenix) : 1.9-1692  
EDS : rb-20028320  
Percentile statistics : 20151230.v01 (using entries in the PDB archive December 30th 2015)  
Refmac : 5.8.0135  
CCP4 : 6.5.0  
Ideal geometry (proteins) : Engh & Huber (2001)  
Ideal geometry (DNA, RNA) : Parkinson et al. (1996)  
Validation Pipeline (wwPDB-VP) : rb-20028320

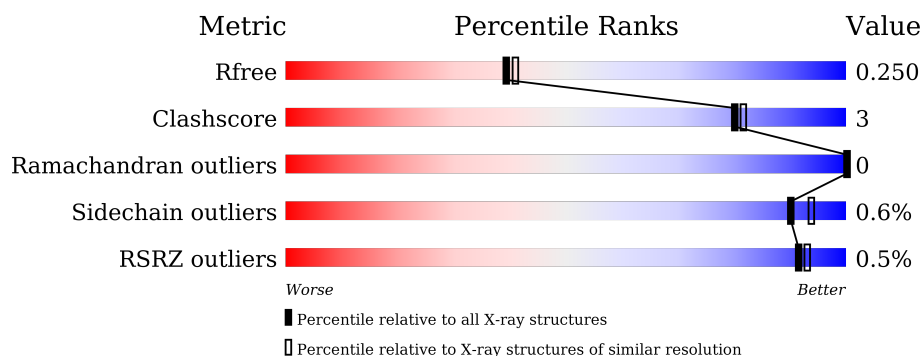
# 1 Overall quality at a glance

The following experimental techniques were used to determine the structure:

*X-RAY DIFFRACTION*

The reported resolution of this entry is 2.10 Å.

Percentile scores (ranging between 0-100) for global validation metrics of the entry are shown in the following graphic. The table shows the number of entries on which the scores are based.



Metric	Whole archive (#Entries)	Similar resolution (#Entries, resolution range(Å))
$R_{free}$	91344	3939 (2.10-2.10)
Clashscore	102246	4460 (2.10-2.10)
Ramachandran outliers	100387	4413 (2.10-2.10)
Sidechain outliers	100360	4414 (2.10-2.10)
RSRZ outliers	91569	3948 (2.10-2.10)

The table below summarises the geometric issues observed across the polymeric chains and their fit to the electron density. The red, orange, yellow and green segments on the lower bar indicate the fraction of residues that contain outliers for  $\geq 3$ , 2, 1 and 0 types of geometric quality criteria. A grey segment represents the fraction of residues that are not modelled. The numeric value for each fraction is indicated below the corresponding segment, with a dot representing fractions  $\leq 5\%$ . The upper red bar (where present) indicates the fraction of residues that have poor fit to the electron density. The numeric value is given above the bar.

Mol	Chain	Length	Quality of chain
1	A	106	<div> <div style="width: 100%; height: 10px; background-color: red;"></div> <div style="width: 96%; height: 10px; background-color: green;"></div> <div style="width: 96%; text-align: center;">96%</div> <div style="width: 100%; height: 10px; background-color: yellow;"></div> <div style="width: 96%; text-align: center;">96%</div> </div>
1	B	106	<div> <div style="width: 92%; height: 10px; background-color: green;"></div> <div style="width: 92%; text-align: center;">92%</div> <div style="width: 8%; height: 10px; background-color: yellow;"></div> <div style="width: 8%; text-align: center;">8%</div> </div>
1	C	106	<div> <div style="width: 93%; height: 10px; background-color: green;"></div> <div style="width: 93%; text-align: center;">93%</div> <div style="width: 6%; height: 10px; background-color: yellow;"></div> <div style="width: 6%; text-align: center;">6%</div> </div>
1	D	106	<div> <div style="width: 94%; height: 10px; background-color: green;"></div> <div style="width: 94%; text-align: center;">94%</div> <div style="width: 6%; height: 10px; background-color: yellow;"></div> <div style="width: 6%; text-align: center;">6%</div> </div>

## 2 Entry composition

There are 5 unique types of molecules in this entry. The entry contains 3532 atoms, of which 0 are hydrogens and 0 are deuteriums.

In the tables below, the ZeroOcc column contains the number of atoms modelled with zero occupancy, the AltConf column contains the number of residues with at least one atom in alternate conformation and the Trace column contains the number of residues modelled with at most 2 atoms.

- Molecule 1 is a protein called Soluble cytochrome b562.

Mol	Chain	Residues	Atoms					ZeroOcc	AltConf	Trace
1	A	106	Total	C	N	O	S	0	0	0
			816	503	145	160	8			
1	B	106	Total	C	N	O	S	0	0	0
			816	503	145	160	8			
1	C	106	Total	C	N	O	S	0	0	0
			816	503	145	160	8			
1	D	106	Total	C	N	O	S	0	0	0
			816	503	145	160	8			

There are 52 discrepancies between the modelled and reference sequences:

Chain	Residue	Modelled	Actual	Comment	Reference
A	34	ALA	ARG	engineered mutation	UNP P0ABE7
A	38	CYS	LEU	engineered mutation	UNP P0ABE7
A	41	TRP	GLN	engineered mutation	UNP P0ABE7
A	42	SER	LYS	engineered mutation	UNP P0ABE7
A	59	HIS	LYS	engineered mutation	UNP P0ABE7
A	66	TRP	ASP	engineered mutation	UNP P0ABE7
A	69	ILE	VAL	engineered mutation	UNP P0ABE7
A	73	HIS	ASP	engineered mutation	UNP P0ABE7
A	77	HIS	LYS	engineered mutation	UNP P0ABE7
A	81	CYS	GLU	engineered mutation	UNP P0ABE7
A	96	CYS	THR	engineered mutation	UNP P0ABE7
A	98	CYS	ARG	engineered mutation	UNP P0ABE7
A	101	CYS	TYR	engineered mutation	UNP P0ABE7
B	34	ALA	ARG	engineered mutation	UNP P0ABE7
B	38	CYS	LEU	engineered mutation	UNP P0ABE7
B	41	TRP	GLN	engineered mutation	UNP P0ABE7
B	42	SER	LYS	engineered mutation	UNP P0ABE7
B	59	HIS	LYS	engineered mutation	UNP P0ABE7
B	66	TRP	ASP	engineered mutation	UNP P0ABE7
B	69	ILE	VAL	engineered mutation	UNP P0ABE7
B	73	HIS	ASP	engineered mutation	UNP P0ABE7

*Continued on next page...*

*Continued from previous page...*

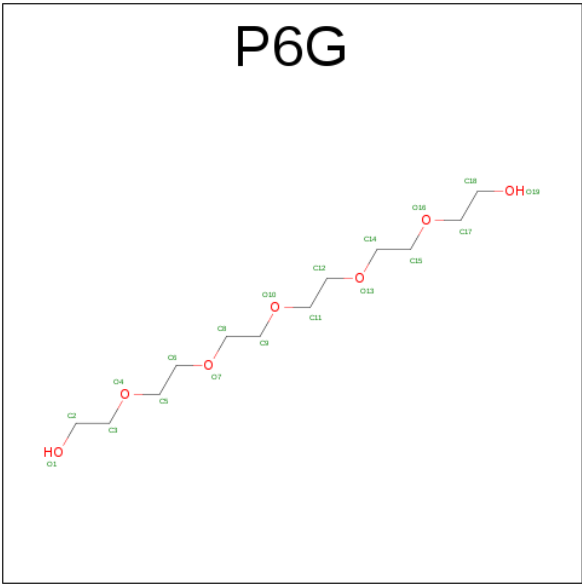
Chain	Residue	Modelled	Actual	Comment	Reference
B	77	HIS	LYS	engineered mutation	UNP P0ABE7
B	81	CYS	GLU	engineered mutation	UNP P0ABE7
B	96	CYS	THR	engineered mutation	UNP P0ABE7
B	98	CYS	ARG	engineered mutation	UNP P0ABE7
B	101	CYS	TYR	engineered mutation	UNP P0ABE7
C	34	ALA	ARG	engineered mutation	UNP P0ABE7
C	38	CYS	LEU	engineered mutation	UNP P0ABE7
C	41	TRP	GLN	engineered mutation	UNP P0ABE7
C	42	SER	LYS	engineered mutation	UNP P0ABE7
C	59	HIS	LYS	engineered mutation	UNP P0ABE7
C	66	TRP	ASP	engineered mutation	UNP P0ABE7
C	69	ILE	VAL	engineered mutation	UNP P0ABE7
C	73	HIS	ASP	engineered mutation	UNP P0ABE7
C	77	HIS	LYS	engineered mutation	UNP P0ABE7
C	81	CYS	GLU	engineered mutation	UNP P0ABE7
C	96	CYS	THR	engineered mutation	UNP P0ABE7
C	98	CYS	ARG	engineered mutation	UNP P0ABE7
C	101	CYS	TYR	engineered mutation	UNP P0ABE7
D	34	ALA	ARG	engineered mutation	UNP P0ABE7
D	38	CYS	LEU	engineered mutation	UNP P0ABE7
D	41	TRP	GLN	engineered mutation	UNP P0ABE7
D	42	SER	LYS	engineered mutation	UNP P0ABE7
D	59	HIS	LYS	engineered mutation	UNP P0ABE7
D	66	TRP	ASP	engineered mutation	UNP P0ABE7
D	69	ILE	VAL	engineered mutation	UNP P0ABE7
D	73	HIS	ASP	engineered mutation	UNP P0ABE7
D	77	HIS	LYS	engineered mutation	UNP P0ABE7
D	81	CYS	GLU	engineered mutation	UNP P0ABE7
D	96	CYS	THR	engineered mutation	UNP P0ABE7
D	98	CYS	ARG	engineered mutation	UNP P0ABE7
D	101	CYS	TYR	engineered mutation	UNP P0ABE7

- Molecule 2 is PROTOPORPHYRIN IX CONTAINING FE (three-letter code: HEM) (formula:  $C_{34}H_{32}FeN_4O_4$ ).



Mol	Chain	Residues	Atoms					ZeroOcc	AltConf
2	A	1	Total 43	C 34	Fe 1	N 4	O 4	0	0
2	B	1	Total 43	C 34	Fe 1	N 4	O 4	0	0
2	C	1	Total 43	C 34	Fe 1	N 4	O 4	0	0
2	D	1	Total 43	C 34	Fe 1	N 4	O 4	0	0

- Molecule 3 is HEXAETHYLENE GLYCOL (three-letter code: P6G) (formula: C<sub>12</sub>H<sub>26</sub>O<sub>7</sub>).



Mol	Chain	Residues	Atoms			ZeroOcc	AltConf
3	A	1	Total	C	O	0	0
			19	12	7		

- Molecule 4 is ZINC ION (three-letter code: ZN) (formula: Zn).

Mol	Chain	Residues	Atoms		ZeroOcc	AltConf
4	B	1	Total	Zn	0	0
			1	1		
4	A	3	Total	Zn	0	0
			3	3		

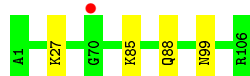
- Molecule 5 is water.

Mol	Chain	Residues	Atoms		ZeroOcc	AltConf
5	A	19	Total	O	0	0
			19	19		
5	B	19	Total	O	0	0
			19	19		
5	C	21	Total	O	0	0
			21	21		
5	D	14	Total	O	0	0
			14	14		

### 3 Residue-property plots [i](#)

These plots are drawn for all protein, RNA and DNA chains in the entry. The first graphic for a chain summarises the proportions of errors displayed in the second graphic. The second graphic shows the sequence view annotated by issues in geometry and electron density. Residues are color-coded according to the number of geometric quality criteria for which they contain at least one outlier: green = 0, yellow = 1, orange = 2 and red = 3 or more. A red dot above a residue indicates a poor fit to the electron density ( $RSRZ > 2$ ). Stretches of 2 or more consecutive residues without any outlier are shown as a green connector. Residues present in the sample, but not in the model, are shown in grey.

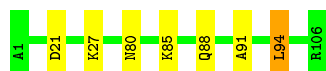
- Molecule 1: Soluble cytochrome b562



- Molecule 1: Soluble cytochrome b562



- Molecule 1: Soluble cytochrome b562



- Molecule 1: Soluble cytochrome b562



## 4 Data and refinement statistics

Property	Value	Source
Space group	P 1 21 1	Depositor
Cell constants a, b, c, $\alpha$ , $\beta$ , $\gamma$	48.06 Å 62.53 Å 72.44 Å 90.00° 99.01° 90.00°	Depositor
Resolution (Å)	37.81 – 2.10 36.98 – 2.10	Depositor EDS
% Data completeness (in resolution range)	99.4 (37.81-2.10) 99.4 (36.98-2.10)	Depositor EDS
$R_{merge}$	0.05	Depositor
$R_{sym}$	(Not available)	Depositor
$\langle I/\sigma(I) \rangle$ <sup>1</sup>	3.52 (at 2.10 Å)	Xtriage
Refinement program	REFMAC 5.8.0103	Depositor
R, $R_{free}$	0.214 , 0.250 0.213 , 0.250	Depositor DCC
$R_{free}$ test set	1257 reflections (5.34%)	DCC
Wilson B-factor (Å <sup>2</sup> )	38.2	Xtriage
Anisotropy	0.098	Xtriage
Bulk solvent $k_{sol}$ (e/Å <sup>3</sup> ), $B_{sol}$ (Å <sup>2</sup> )	0.34 , 38.4	EDS
L-test for twinning <sup>2</sup>	$\langle  L  \rangle = 0.49$ , $\langle L^2 \rangle = 0.33$	Xtriage
Estimated twinning fraction	No twinning to report.	Xtriage
$F_o, F_c$ correlation	0.96	EDS
Total number of atoms	3532	wwPDB-VP
Average B, all atoms (Å <sup>2</sup> )	46.0	wwPDB-VP

Xtriage's analysis on translational NCS is as follows: *The largest off-origin peak in the Patterson function is 7.21% of the height of the origin peak. No significant pseudotranslation is detected.*

<sup>1</sup>Intensities estimated from amplitudes.

<sup>2</sup>Theoretical values of  $\langle |L| \rangle$ ,  $\langle L^2 \rangle$  for acentric reflections are 0.5, 0.333 respectively for untwinned datasets, and 0.375, 0.2 for perfectly twinned datasets.



## 5 Model quality [i](#)

### 5.1 Standard geometry [i](#)

Bond lengths and bond angles in the following residue types are not validated in this section: HEM, ZN, P6G

The Z score for a bond length (or angle) is the number of standard deviations the observed value is removed from the expected value. A bond length (or angle) with  $|Z| > 5$  is considered an outlier worth inspection. RMSZ is the root-mean-square of all Z scores of the bond lengths (or angles).

Mol	Chain	Bond lengths		Bond angles	
		RMSZ	$\# Z  > 5$	RMSZ	$\# Z  > 5$
1	A	0.92	0/831	0.70	0/1122
1	B	0.83	0/831	0.74	0/1122
1	C	0.80	0/831	0.80	2/1122 (0.2%)
1	D	0.83	0/831	0.75	0/1122
All	All	0.85	0/3324	0.75	2/4488 (0.0%)

There are no bond length outliers.

All (2) bond angle outliers are listed below:

Mol	Chain	Res	Type	Atoms	Z	Observed(°)	Ideal(°)
1	C	94	LEU	CB-CG-CD1	-5.46	101.72	111.00
1	C	94	LEU	CB-CG-CD2	-5.38	101.85	111.00

There are no chirality outliers.

There are no planarity outliers.

### 5.2 Too-close contacts [i](#)

In the following table, the Non-H and H(model) columns list the number of non-hydrogen atoms and hydrogen atoms in the chain respectively. The H(added) column lists the number of hydrogen atoms added and optimized by MolProbity. The Clashes column lists the number of clashes within the asymmetric unit, whereas Symm-Clashes lists symmetry related clashes.

Mol	Chain	Non-H	H(model)	H(added)	Clashes	Symm-Clashes
1	A	816	0	785	4	0
1	B	816	0	785	4	0
1	C	816	0	785	6	0
1	D	816	0	785	4	0
2	A	43	0	30	2	0

*Continued on next page...*

*Continued from previous page...*

Mol	Chain	Non-H	H(model)	H(added)	Clashes	Symm-Clashes
2	B	43	0	30	2	0
2	C	43	0	30	2	0
2	D	43	0	30	1	0
3	A	19	0	26	4	0
4	A	3	0	0	0	0
4	B	1	0	0	0	0
5	A	19	0	0	1	0
5	B	19	0	0	0	0
5	C	21	0	0	1	0
5	D	14	0	0	0	0
All	All	3532	0	3286	23	0

The all-atom clashscore is defined as the number of clashes found per 1000 atoms (including hydrogen atoms). The all-atom clashscore for this structure is 3.

The worst 5 of 23 close contacts within the same asymmetric unit are listed below, sorted by their clash magnitude.

Atom-1	Atom-2	Interatomic distance (Å)	Clash overlap (Å)
1:C:94:LEU:HD21	2:C:201:HEM:HBB1	1.73	0.71
1:A:27:LYS:NZ	5:A:301:HOH:O	2.25	0.69
2:A:201:HEM:HBC2	2:A:201:HEM:CMC	2.34	0.57
2:B:201:HEM:HMC2	2:B:201:HEM:HBC2	1.87	0.57
2:A:201:HEM:HBC2	2:A:201:HEM:HMC2	1.87	0.57

There are no symmetry-related clashes.

## 5.3 Torsion angles [i](#)

### 5.3.1 Protein backbone [i](#)

In the following table, the Percentiles column shows the percent Ramachandran outliers of the chain as a percentile score with respect to all X-ray entries followed by that with respect to entries of similar resolution.

The Analysed column shows the number of residues for which the backbone conformation was analysed, and the total number of residues.

Mol	Chain	Analysed	Favoured	Allowed	Outliers	Percentiles	
1	A	104/106 (98%)	104 (100%)	0	0	100	100
1	B	104/106 (98%)	104 (100%)	0	0	100	100

*Continued on next page...*

*Continued from previous page...*

Mol	Chain	Analysed	Favoured	Allowed	Outliers	Percentiles	
1	C	104/106 (98%)	104 (100%)	0	0	100	100
1	D	104/106 (98%)	102 (98%)	2 (2%)	0	100	100
All	All	416/424 (98%)	414 (100%)	2 (0%)	0	100	100

There are no Ramachandran outliers to report.

### 5.3.2 Protein sidechains ⓘ

In the following table, the Percentiles column shows the percent sidechain outliers of the chain as a percentile score with respect to all X-ray entries followed by that with respect to entries of similar resolution.

The Analysed column shows the number of residues for which the sidechain conformation was analysed, and the total number of residues.

Mol	Chain	Analysed	Rotameric	Outliers	Percentiles	
1	A	85/85 (100%)	85 (100%)	0	100	100
1	B	85/85 (100%)	83 (98%)	2 (2%)	57	61
1	C	85/85 (100%)	85 (100%)	0	100	100
1	D	85/85 (100%)	85 (100%)	0	100	100
All	All	340/340 (100%)	338 (99%)	2 (1%)	90	94

All (2) residues with a non-rotameric sidechain are listed below:

Mol	Chain	Res	Type
1	B	10	LEU
1	B	38	CYS

Some sidechains can be flipped to improve hydrogen bonding and reduce clashes. 5 of 12 such sidechains are listed below:

Mol	Chain	Res	Type
1	B	88	GLN
1	B	99	ASN
1	C	99	ASN
1	B	80	ASN
1	C	88	GLN

### 5.3.3 RNA ⓘ

There are no RNA molecules in this entry.

## 5.4 Non-standard residues in protein, DNA, RNA chains ⓘ

There are no non-standard protein/DNA/RNA residues in this entry.

## 5.5 Carbohydrates ⓘ

There are no carbohydrates in this entry.

## 5.6 Ligand geometry ⓘ

Of 9 ligands modelled in this entry, 4 are monoatomic - leaving 5 for Mogul analysis.

In the following table, the Counts columns list the number of bonds (or angles) for which Mogul statistics could be retrieved, the number of bonds (or angles) that are observed in the model and the number of bonds (or angles) that are defined in the chemical component dictionary. The Link column lists molecule types, if any, to which the group is linked. The Z score for a bond length (or angle) is the number of standard deviations the observed value is removed from the expected value. A bond length (or angle) with  $|Z| > 2$  is considered an outlier worth inspection. RMSZ is the root-mean-square of all Z scores of the bond lengths (or angles).

Mol	Type	Chain	Res	Link	Bond lengths			Bond angles		
					Counts	RMSZ	# $ Z  > 2$	Counts	RMSZ	# $ Z  > 2$
2	HEM	A	201	1	24,50,50	1.10	2 (8%)	16,82,82	1.70	2 (12%)
3	P6G	A	202	-	18,18,18	1.06	0	17,17,17	1.13	1 (5%)
2	HEM	B	201	1	24,50,50	0.88	1 (4%)	16,82,82	1.86	4 (25%)
2	HEM	C	201	1	24,50,50	1.03	1 (4%)	16,82,82	0.93	1 (6%)
2	HEM	D	201	1	24,50,50	1.19	3 (12%)	16,82,82	1.58	1 (6%)

In the following table, the Chirals column lists the number of chiral outliers, the number of chiral centers analysed, the number of these observed in the model and the number defined in the chemical component dictionary. Similar counts are reported in the Torsion and Rings columns. '-' means no outliers of that kind were identified.

Mol	Type	Chain	Res	Link	Chirals	Torsions	Rings
2	HEM	A	201	1	-	0/6/54/54	0/0/8/8
3	P6G	A	202	-	-	0/16/16/16	0/0/0/0
2	HEM	B	201	1	-	0/6/54/54	0/0/8/8
2	HEM	C	201	1	-	0/6/54/54	0/0/8/8

*Continued on next page...*

*Continued from previous page...*

Mol	Type	Chain	Res	Link	Chirals	Torsions	Rings
2	HEM	D	201	1	-	0/6/54/54	0/0/8/8

The worst 5 of 7 bond length outliers are listed below:

Mol	Chain	Res	Type	Atoms	Z	Observed(Å)	Ideal(Å)
2	A	201	HEM	C3B-C2B	-3.16	1.36	1.40
2	C	201	HEM	C1B-NB	-3.00	1.32	1.36
2	A	201	HEM	C1B-NB	-2.98	1.32	1.36
2	D	201	HEM	C1B-NB	-2.97	1.32	1.36
2	D	201	HEM	C3B-C2B	-2.37	1.37	1.40

The worst 5 of 9 bond angle outliers are listed below:

Mol	Chain	Res	Type	Atoms	Z	Observed(°)	Ideal(°)
2	D	201	HEM	C3B-CAB-CBB	-4.23	117.89	126.40
2	A	201	HEM	C3C-CAC-CBC	-4.14	118.07	126.40
2	B	201	HEM	C3C-CAC-CBC	-4.05	118.25	126.40
2	B	201	HEM	CAD-CBD-CGD	-3.48	106.01	112.78
3	A	202	P6G	C8-O7-C6	-2.44	102.87	113.31

There are no chirality outliers.

There are no torsion outliers.

There are no ring outliers.

5 monomers are involved in 11 short contacts:

Mol	Chain	Res	Type	Clashes	Symm-Clashes
2	A	201	HEM	2	0
3	A	202	P6G	4	0
2	B	201	HEM	2	0
2	C	201	HEM	2	0
2	D	201	HEM	1	0

## 5.7 Other polymers ⓘ

There are no such residues in this entry.

## 5.8 Polymer linkage issues ⓘ

There are no chain breaks in this entry.

## 6 Fit of model and data [i](#)

### 6.1 Protein, DNA and RNA chains [i](#)

In the following table, the column labelled ‘#RSRZ> 2’ contains the number (and percentage) of RSRZ outliers, followed by percent RSRZ outliers for the chain as percentile scores relative to all X-ray entries and entries of similar resolution. The OWAB column contains the minimum, median, 95<sup>th</sup> percentile and maximum values of the occupancy-weighted average B-factor per residue. The column labelled ‘Q< 0.9’ lists the number of (and percentage) of residues with an average occupancy less than 0.9.

Mol	Chain	Analysed	<RSRZ>	#RSRZ>2	OWAB(Å <sup>2</sup> )	Q<0.9
1	A	106/106 (100%)	0.03	1 (0%) 85 88	31, 39, 53, 62	0
1	B	106/106 (100%)	0.05	0 100 100	30, 45, 65, 73	0
1	C	106/106 (100%)	0.04	0 100 100	32, 47, 64, 69	0
1	D	106/106 (100%)	0.18	1 (0%) 85 88	32, 52, 75, 85	0
All	All	424/424 (100%)	0.07	2 (0%) 91 93	30, 46, 66, 85	0

All (2) RSRZ outliers are listed below:

Mol	Chain	Res	Type	RSRZ
1	D	1	ALA	2.9
1	A	70	GLY	2.1

### 6.2 Non-standard residues in protein, DNA, RNA chains [i](#)

There are no non-standard protein/DNA/RNA residues in this entry.

### 6.3 Carbohydrates [i](#)

There are no carbohydrates in this entry.

### 6.4 Ligands [i](#)

In the following table, the Atoms column lists the number of modelled atoms in the group and the number defined in the chemical component dictionary. LLDF column lists the quality of electron density of the group with respect to its neighbouring residues in protein, DNA or RNA chains. The B-factors column lists the minimum, median, 95<sup>th</sup> percentile and maximum values of B factors of atoms in the group. The column labelled ‘Q< 0.9’ lists the number of atoms with occupancy less than 0.9.

Mol	Type	Chain	Res	Atoms	RSCC	RSR	LLDF	B-factors( $\text{\AA}^2$ )	Q<0.9
3	P6G	A	202	19/19	0.88	0.20	1.56	33,39,46,48	0
2	HEM	C	201	43/43	0.96	0.14	0.25	36,43,57,70	0
2	HEM	D	201	43/43	0.94	0.14	0.20	45,52,64,69	0
2	HEM	A	201	43/43	0.96	0.12	-0.16	29,35,42,48	0
2	HEM	B	201	43/43	0.96	0.11	-0.57	33,38,53,58	0
4	ZN	A	204	1/1	0.99	0.07	-	31,31,31,31	0
4	ZN	A	203	1/1	1.00	0.08	-	31,31,31,31	0
4	ZN	B	202	1/1	1.00	0.07	-	32,32,32,32	0
4	ZN	A	205	1/1	0.99	0.08	-	30,30,30,30	0

## 6.5 Other polymers [i](#)

There are no such residues in this entry.