



Full wwPDB X-ray Structure Validation Report ⓘ

Feb 1, 2016 – 06:18 PM GMT

PDB ID : 4L7D
Title : Structure of keap1 kelch domain with (1S,2R)-2-[[[(1S)-5-methyl-1-[(1-oxo-1,3-dihydro-2H-isoindol-2-yl)methyl]-3,4-dihydroisoquinolin-2(1H)-yl]carbonyl}cyclohexanecarboxylic acid
Authors : Jnoff, E.; Brookfield, F.; Albrecht, C.; Barker, J.J.; Barker, O.; Beaumont, E.; Bromidge, S.; Brooks, M.; Ceska, T.; Courade, J.P.; Crabbe, T.; Duclos, S.; Fryatt, T.; Jigorel, E.; Kwong, J.; Sands, Z.; Smith, M.A.
Deposited on : 2013-06-13
Resolution : 2.25 Å(reported)

This is a Full wwPDB X-ray Structure Validation Report for a publicly released PDB entry.
We welcome your comments at validation@mail.wwpdb.org
A user guide is available at
<http://wwpdb.org/validation/2016/XrayValidationReportHelp>
with specific help available everywhere you see the ⓘ symbol.

The following versions of software and data (see [references ⓘ](#)) were used in the production of this report:

MolProbity : 4.02b-467
Mogul : 1.7 (RC4), CSD as536be (2015)
Xtriage (Phenix) : 1.9-1692
EDS : rb-20026688
Percentile statistics : 20151230.v01 (using entries in the PDB archive December 30th 2015)
Refmac : 5.8.0135
CCP4 : 6.5.0
Ideal geometry (proteins) : Engh & Huber (2001)
Ideal geometry (DNA, RNA) : Parkinson et al. (1996)
Validation Pipeline (wwPDB-VP) : trunk26865

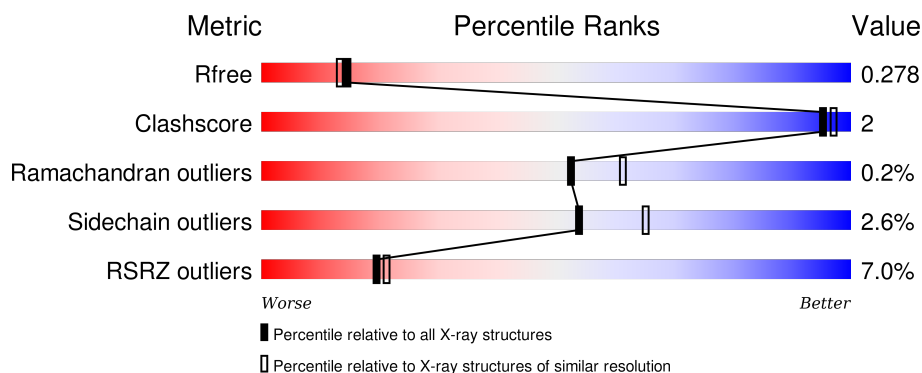
1 Overall quality at a glance

The following experimental techniques were used to determine the structure:

X-RAY DIFFRACTION

The reported resolution of this entry is 2.25 Å.

Percentile scores (ranging between 0-100) for global validation metrics of the entry are shown in the following graphic. The table shows the number of entries on which the scores are based.



Metric	Whole archive (#Entries)	Similar resolution (#Entries, resolution range(Å))
R_{free}	91344	1640 (2.28-2.24)
Clashscore	102246	1095 (2.26-2.26)
Ramachandran outliers	100387	1063 (2.26-2.26)
Sidechain outliers	100360	1063 (2.26-2.26)
RSRZ outliers	91569	1647 (2.28-2.24)

The table below summarises the geometric issues observed across the polymeric chains and their fit to the electron density. The red, orange, yellow and green segments on the lower bar indicate the fraction of residues that contain outliers for ≥ 3 , 2, 1 and 0 types of geometric quality criteria. A grey segment represents the fraction of residues that are not modelled. The numeric value for each fraction is indicated below the corresponding segment, with a dot representing fractions $\leq 5\%$. The upper red bar (where present) indicates the fraction of residues that have poor fit to the electron density. The numeric value is given above the bar.

Mol	Chain	Length	Quality of chain
1	A	300	<div> <div>3%</div> <div>90%</div> <div>5%</div> <div>5%</div> </div>
1	B	300	<div> <div>15%</div> <div>90%</div> <div>5%</div> <div>5%</div> </div>
1	C	300	<div> <div>3%</div> <div>90%</div> <div>5%</div> <div>.</div> </div>

The following table lists non-polymeric compounds, carbohydrate monomers and non-standard residues in protein, DNA, RNA chains that are outliers for geometric or electron-density-fit criteria:

Mol	Type	Chain	Res	Chirality	Geometry	Clashes	Electron density
3	ACT	C	702	-	-	-	X
3	ACT	C	705	-	-	-	X

2 Entry composition [i](#)

There are 4 unique types of molecules in this entry. The entry contains 7081 atoms, of which 0 are hydrogens and 0 are deuteriums.

In the tables below, the ZeroOcc column contains the number of atoms modelled with zero occupancy, the AltConf column contains the number of residues with at least one atom in alternate conformation and the Trace column contains the number of residues modelled with at most 2 atoms.

- Molecule 1 is a protein called Kelch-like ECH-associated protein 1.

Mol	Chain	Residues	Atoms					ZeroOcc	AltConf	Trace
1	A	286	Total	C	N	O	S	0	2	0
			2220	1380	399	426	15			
1	B	285	Total	C	N	O	S	0	2	0
			2210	1374	396	425	15			
1	C	287	Total	C	N	O	S	0	4	0
			2242	1392	406	428	16			

There are 36 discrepancies between the modelled and reference sequences:

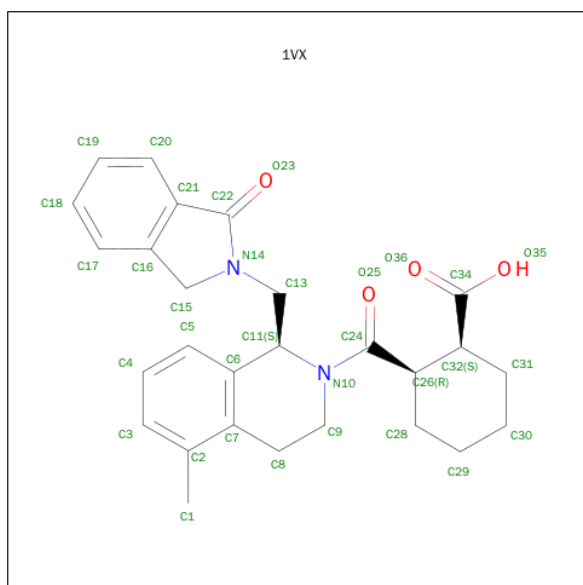
Chain	Residue	Modelled	Actual	Comment	Reference
A	318	MET	-	EXPRESSION TAG	UNP Q14145
A	319	GLY	-	EXPRESSION TAG	UNP Q14145
A	320	HIS	-	EXPRESSION TAG	UNP Q14145
A	354	ASP	ARG	ENGINEERED MUTATION	UNP Q14145
A	610	LEU	-	EXPRESSION TAG	UNP Q14145
A	611	GLU	-	EXPRESSION TAG	UNP Q14145
A	612	HIS	-	EXPRESSION TAG	UNP Q14145
A	613	HIS	-	EXPRESSION TAG	UNP Q14145
A	614	HIS	-	EXPRESSION TAG	UNP Q14145
A	615	HIS	-	EXPRESSION TAG	UNP Q14145
A	616	HIS	-	EXPRESSION TAG	UNP Q14145
A	617	HIS	-	EXPRESSION TAG	UNP Q14145
B	318	MET	-	EXPRESSION TAG	UNP Q14145
B	319	GLY	-	EXPRESSION TAG	UNP Q14145
B	320	HIS	-	EXPRESSION TAG	UNP Q14145
B	354	ASP	ARG	ENGINEERED MUTATION	UNP Q14145
B	610	LEU	-	EXPRESSION TAG	UNP Q14145
B	611	GLU	-	EXPRESSION TAG	UNP Q14145
B	612	HIS	-	EXPRESSION TAG	UNP Q14145
B	613	HIS	-	EXPRESSION TAG	UNP Q14145
B	614	HIS	-	EXPRESSION TAG	UNP Q14145
B	615	HIS	-	EXPRESSION TAG	UNP Q14145
B	616	HIS	-	EXPRESSION TAG	UNP Q14145

Continued on next page...

Continued from previous page...

Chain	Residue	Modelled	Actual	Comment	Reference
B	617	HIS	-	EXPRESSION TAG	UNP Q14145
C	318	MET	-	EXPRESSION TAG	UNP Q14145
C	319	GLY	-	EXPRESSION TAG	UNP Q14145
C	320	HIS	-	EXPRESSION TAG	UNP Q14145
C	354	ASP	ARG	ENGINEERED MUTATION	UNP Q14145
C	610	LEU	-	EXPRESSION TAG	UNP Q14145
C	611	GLU	-	EXPRESSION TAG	UNP Q14145
C	612	HIS	-	EXPRESSION TAG	UNP Q14145
C	613	HIS	-	EXPRESSION TAG	UNP Q14145
C	614	HIS	-	EXPRESSION TAG	UNP Q14145
C	615	HIS	-	EXPRESSION TAG	UNP Q14145
C	616	HIS	-	EXPRESSION TAG	UNP Q14145
C	617	HIS	-	EXPRESSION TAG	UNP Q14145

- Molecule 2 is (1S,2R)-2-{[(1S)-5-METHYL-1-[(1-OXO-1,3-DIHYDRO-2H-ISOINDOL-2-YL)METHYL]-3,4-DIHYDROISOQUINOLIN-2(1H)-YL]CARBONYL}CYCLOHEXANECARBOXYLIC ACID (three-letter code: 1VX) (formula: C₂₇H₃₀N₂O₄).



Mol	Chain	Residues	Atoms				ZeroOcc	AltConf
2	A	1	Total	C	N	O	0	0
			33	27	2	4		
2	B	1	Total	C	N	O	0	0
			33	27	2	4		
2	C	1	Total	C	N	O	0	0
			33	27	2	4		

- Molecule 3 is ACETATE ION (three-letter code: ACT) (formula: C₂H₃O₂).



Mol	Chain	Residues	Atoms			ZeroOcc	AltConf
3	A	1	Total	C	O	0	0
			4	2	2		
3	A	1	Total	C	O	0	0
			4	2	2		
3	B	1	Total	C	O	0	0
			4	2	2		
3	B	1	Total	C	O	0	0
			4	2	2		
3	B	1	Total	C	O	0	0
			4	2	2		
3	C	1	Total	C	O	0	0
			4	2	2		
3	C	1	Total	C	O	0	0
			4	2	2		
3	C	1	Total	C	O	0	0
			4	2	2		
3	C	1	Total	C	O	0	0
			4	2	2		

- Molecule 4 is water.

Mol	Chain	Residues	Atoms		ZeroOcc	AltConf
4	A	115	Total	O	0	0
			115	115		
4	B	44	Total	O	0	0
			44	44		

Continued on next page...

Continued from previous page...

Mol	Chain	Residues	Atoms		ZeroOcc	AltConf
4	C	111	Total	O	0	0
			111	111		

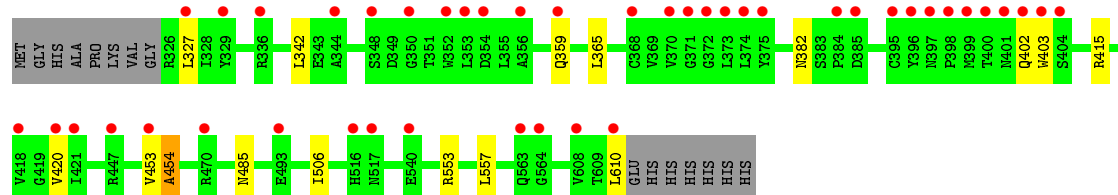
3 Residue-property plots [i](#)

These plots are drawn for all protein, RNA and DNA chains in the entry. The first graphic for a chain summarises the proportions of errors displayed in the second graphic. The second graphic shows the sequence view annotated by issues in geometry and electron density. Residues are color-coded according to the number of geometric quality criteria for which they contain at least one outlier: green = 0, yellow = 1, orange = 2 and red = 3 or more. A red dot above a residue indicates a poor fit to the electron density ($RSRZ > 2$). Stretches of 2 or more consecutive residues without any outlier are shown as a green connector. Residues present in the sample, but not in the model, are shown in grey.

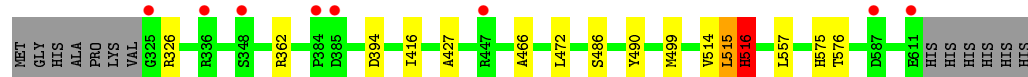
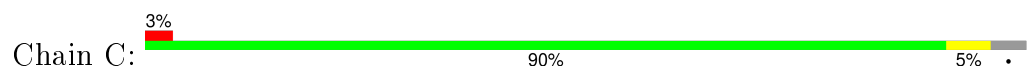
- Molecule 1: Kelch-like ECH-associated protein 1



- Molecule 1: Kelch-like ECH-associated protein 1



- Molecule 1: Kelch-like ECH-associated protein 1



4 Data and refinement statistics

Property	Value	Source
Space group	P 21 2 21	Depositor
Cell constants a, b, c, α , β , γ	75.92Å 126.00Å 130.30Å 90.00° 90.00° 90.00°	Depositor
Resolution (Å)	46.02 – 2.25 46.02 – 2.25	Depositor EDS
% Data completeness (in resolution range)	96.3 (46.02-2.25) 96.3 (46.02-2.25)	Depositor EDS
R_{merge}	(Not available)	Depositor
R_{sym}	(Not available)	Depositor
$\langle I/\sigma(I) \rangle$ ¹	3.59 (at 2.24Å)	Xtriage
Refinement program	REFMAC 5.7.0032	Depositor
R, R_{free}	0.252 , 0.276 0.251 , 0.278	Depositor DCC
R_{free} test set	3032 reflections (5.52%)	DCC
Wilson B-factor (Å ²)	37.7	Xtriage
Anisotropy	0.145	Xtriage
Bulk solvent k_{sol} (e/Å ³), B_{sol} (Å ²)	0.32 , 24.1	EDS
Estimated twinning fraction	0.027 for -h,l,k	Xtriage
L-test for twinning ²	$\langle L \rangle = 0.47$, $\langle L^2 \rangle = 0.29$	Xtriage
Outliers	0 of 57810 reflections	Xtriage
F_o, F_c correlation	0.92	EDS
Total number of atoms	7081	wwPDB-VP
Average B, all atoms (Å ²)	41.0	wwPDB-VP

Xtriage's analysis on translational NCS is as follows: *The largest off-origin peak in the Patterson function is 3.47% of the height of the origin peak. No significant pseudotranslation is detected.*

¹Intensities estimated from amplitudes.

²Theoretical values of $\langle |L| \rangle$, $\langle L^2 \rangle$ for acentric reflections are 0.5, 0.375 respectively for untwinned datasets, and 0.333, 0.2 for perfectly twinned datasets.

5 Model quality [i](#)

5.1 Standard geometry [i](#)

Bond lengths and bond angles in the following residue types are not validated in this section: 1VX, ACT

The Z score for a bond length (or angle) is the number of standard deviations the observed value is removed from the expected value. A bond length (or angle) with $|Z| > 5$ is considered an outlier worth inspection. RMSZ is the root-mean-square of all Z scores of the bond lengths (or angles).

Mol	Chain	Bond lengths		Bond angles	
		RMSZ	# Z >5	RMSZ	# Z >5
1	A	0.24	0/2274	0.48	0/3098
1	B	0.25	0/2263	0.48	0/3083
1	C	0.24	0/2295	0.47	0/3124
All	All	0.25	0/6832	0.48	0/9305

There are no bond length outliers.

There are no bond angle outliers.

There are no chirality outliers.

There are no planarity outliers.

5.2 Too-close contacts [i](#)

In the following table, the Non-H and H(model) columns list the number of non-hydrogen atoms and hydrogen atoms in the chain respectively. The H(added) column lists the number of hydrogen atoms added and optimized by MolProbity. The Clashes column lists the number of clashes within the asymmetric unit, whereas Symm-Clashes lists symmetry related clashes.

Mol	Chain	Non-H	H(model)	H(added)	Clashes	Symm-Clashes
1	A	2220	0	2100	8	0
1	B	2210	0	2094	3	0
1	C	2242	0	2127	9	0
2	A	33	0	29	0	0
2	B	33	0	29	0	0
2	C	33	0	29	1	0
3	A	8	0	6	1	0
3	B	12	0	9	0	0
3	C	20	0	15	0	0
4	A	115	0	0	0	0

Continued on next page...

Continued from previous page...

Mol	Chain	Non-H	H(model)	H(added)	Clashes	Symm-Clashes
4	B	44	0	0	0	0
4	C	111	0	0	0	0
All	All	7081	0	6438	21	0

The all-atom clashscore is defined as the number of clashes found per 1000 atoms (including hydrogen atoms). The all-atom clashscore for this structure is 2.

All (21) close contacts within the same asymmetric unit are listed below, sorted by their clash magnitude.

Atom-1	Atom-2	Interatomic distance (Å)	Clash overlap (Å)
1:C:575:HIS:CD2	1:C:576:THR:HG23	2.25	0.72
1:A:385:ASP:HB3	1:A:386:GLY:HA2	1.87	0.56
1:A:385:ASP:CB	1:A:386:GLY:HA2	2.41	0.51
1:A:471:LEU:HD21	3:A:703:ACT:H2	1.92	0.51
1:C:514[A]:VAL:HG13	1:C:514[A]:VAL:O	2.12	0.50
1:B:453:VAL:O	1:B:454:ALA:HB3	2.12	0.50
1:C:486:SER:HB2	1:C:499:MET:CE	2.46	0.45
1:C:416:ILE:HD11	1:C:427:ALA:HB1	1.97	0.45
1:B:342:LEU:HD22	1:B:403:TRP:CZ2	2.52	0.44
1:C:486:SER:HB2	1:C:499:MET:HE2	1.98	0.44
1:B:485:ASN:HB3	1:B:506:ILE:HD13	1.98	0.44
1:C:466:ALA:HB1	1:C:514[B]:VAL:HG23	1.98	0.43
1:C:515:LEU:O	1:C:516:HIS:C	2.57	0.43
1:C:362:ARG:NH2	1:C:394:ASP:OD2	2.50	0.43
1:A:466:ALA:HB2	1:A:512:VAL:HG12	2.01	0.43
1:A:515:LEU:HD22	1:A:566:ILE:HG13	2.01	0.43
2:C:701:IVX:H6	2:C:701:IVX:H20	1.67	0.42
1:A:466:ALA:HB1	1:A:514:VAL:CG2	2.49	0.42
1:A:383:SER:HB2	1:A:384:PRO:HA	2.01	0.42
1:A:416:ILE:HD11	1:A:427:ALA:HB1	2.01	0.41
1:C:472:LEU:HB3	1:C:490:TYR:HB3	2.02	0.41

There are no symmetry-related clashes.

5.3 Torsion angles ⓘ

5.3.1 Protein backbone ⓘ

In the following table, the Percentiles column shows the percent Ramachandran outliers of the chain as a percentile score with respect to all X-ray entries followed by that with respect to entries of similar resolution.

The Analysed column shows the number of residues for which the backbone conformation was analysed, and the total number of residues.

Mol	Chain	Analysed	Favoured	Allowed	Outliers	Percentiles	
1	A	286/300 (95%)	281 (98%)	5 (2%)	0	100	100
1	B	285/300 (95%)	275 (96%)	9 (3%)	1 (0%)	39	43
1	C	289/300 (96%)	280 (97%)	8 (3%)	1 (0%)	46	52
All	All	860/900 (96%)	836 (97%)	22 (3%)	2 (0%)	52	61

All (2) Ramachandran outliers are listed below:

Mol	Chain	Res	Type
1	C	516	HIS
1	B	454	ALA

5.3.2 Protein sidechains ⓘ

In the following table, the Percentiles column shows the percent sidechain outliers of the chain as a percentile score with respect to all X-ray entries followed by that with respect to entries of similar resolution.

The Analysed column shows the number of residues for which the sidechain conformation was analysed, and the total number of residues.

Mol	Chain	Analysed	Rotameric	Outliers	Percentiles	
1	A	235/244 (96%)	231 (98%)	4 (2%)	68	79
1	B	234/244 (96%)	224 (96%)	10 (4%)	35	41
1	C	237/244 (97%)	233 (98%)	4 (2%)	68	79
All	All	706/732 (96%)	688 (98%)	18 (2%)	54	66

All (18) residues with a non-rotameric sidechain are listed below:

Mol	Chain	Res	Type
1	A	382	ASN
1	A	385	ASP
1	A	557	LEU
1	A	596	ARG
1	B	327	LEU
1	B	359	GLN
1	B	365	LEU
1	B	382	ASN

Continued on next page...

Continued from previous page...

Mol	Chain	Res	Type
1	B	402	GLN
1	B	415	ARG
1	B	420	VAL
1	B	553	ARG
1	B	557	LEU
1	B	610	LEU
1	C	326	ARG
1	C	515	LEU
1	C	516	HIS
1	C	557	LEU

Some sidechains can be flipped to improve hydrogen bonding and reduce clashes. All (4) such sidechains are listed below:

Mol	Chain	Res	Type
1	B	359	GLN
1	B	562	HIS
1	C	562	HIS
1	C	575	HIS

5.3.3 RNA [i](#)

There are no RNA molecules in this entry.

5.4 Non-standard residues in protein, DNA, RNA chains [i](#)

There are no non-standard protein/DNA/RNA residues in this entry.

5.5 Carbohydrates [i](#)

There are no carbohydrates in this entry.

5.6 Ligand geometry [i](#)

13 ligands are modelled in this entry.

In the following table, the Counts columns list the number of bonds (or angles) for which Mogul statistics could be retrieved, the number of bonds (or angles) that are observed in the model and the number of bonds (or angles) that are defined in the chemical component dictionary. The Link column lists molecule types, if any, to which the group is linked. The Z score for a bond length

(or angle) is the number of standard deviations the observed value is removed from the expected value. A bond length (or angle) with $|Z| > 2$ is considered an outlier worth inspection. RMSZ is the root-mean-square of all Z scores of the bond lengths (or angles).

Mol	Type	Chain	Res	Link	Bond lengths			Bond angles		
					Counts	RMSZ	# Z > 2	Counts	RMSZ	# Z > 2
2	1VX	A	701	-	33,37,37	1.25	4 (12%)	41,54,54	1.28	4 (9%)
3	ACT	A	702	-	1,3,3	1.13	0	0,3,3	0.00	-
3	ACT	A	703	-	1,3,3	1.07	0	0,3,3	0.00	-
2	1VX	B	701	-	33,37,37	1.25	4 (12%)	41,54,54	1.27	5 (12%)
3	ACT	B	702	-	1,3,3	1.16	0	0,3,3	0.00	-
3	ACT	B	703	-	1,3,3	1.16	0	0,3,3	0.00	-
3	ACT	B	704	-	1,3,3	1.10	0	0,3,3	0.00	-
2	1VX	C	701	-	33,37,37	2.73	16 (48%)	41,54,54	1.36	4 (9%)
3	ACT	C	702	-	1,3,3	1.23	0	0,3,3	0.00	-
3	ACT	C	703	-	1,3,3	1.13	0	0,3,3	0.00	-
3	ACT	C	704	-	1,3,3	1.16	0	0,3,3	0.00	-
3	ACT	C	705	-	1,3,3	1.16	0	0,3,3	0.00	-
3	ACT	C	706	-	1,3,3	1.17	0	0,3,3	0.00	-

In the following table, the Chirals column lists the number of chiral outliers, the number of chiral centers analysed, the number of these observed in the model and the number defined in the chemical component dictionary. Similar counts are reported in the Torsion and Rings columns. '-' means no outliers of that kind were identified.

Mol	Type	Chain	Res	Link	Chirals	Torsions	Rings
2	1VX	A	701	-	-	0/12/52/52	0/5/5/5
3	ACT	A	702	-	-	0/0/0/0	0/0/0/0
3	ACT	A	703	-	-	0/0/0/0	0/0/0/0
2	1VX	B	701	-	-	0/12/52/52	0/5/5/5
3	ACT	B	702	-	-	0/0/0/0	0/0/0/0
3	ACT	B	703	-	-	0/0/0/0	0/0/0/0
3	ACT	B	704	-	-	0/0/0/0	0/0/0/0
2	1VX	C	701	-	-	0/12/52/52	0/5/5/5
3	ACT	C	702	-	-	0/0/0/0	0/0/0/0
3	ACT	C	703	-	-	0/0/0/0	0/0/0/0
3	ACT	C	704	-	-	0/0/0/0	0/0/0/0
3	ACT	C	705	-	-	0/0/0/0	0/0/0/0
3	ACT	C	706	-	-	0/0/0/0	0/0/0/0

All (24) bond length outliers are listed below:

Mol	Chain	Res	Type	Atoms	Z	Observed(Å)	Ideal(Å)
2	C	701	1VX	C11-N10	-6.85	1.40	1.47

Continued on next page...

Continued from previous page...

Mol	Chain	Res	Type	Atoms	Z	Observed(Å)	Ideal(Å)
2	C	701	1VX	C6-C11	-4.75	1.46	1.52
2	C	701	1VX	C9-N10	-4.53	1.41	1.47
2	C	701	1VX	C21-C16	-4.04	1.34	1.39
2	C	701	1VX	C26-C32	-3.92	1.49	1.55
2	C	701	1VX	C21-C22	-3.69	1.42	1.48
2	C	701	1VX	C31-C32	-3.42	1.49	1.53
2	C	701	1VX	C15-N14	-3.36	1.41	1.46
2	C	701	1VX	C13-N14	-3.33	1.41	1.47
2	C	701	1VX	C8-C7	-3.02	1.46	1.51
2	C	701	1VX	C5-C6	-2.77	1.35	1.39
2	C	701	1VX	C15-C16	-2.74	1.45	1.50
2	A	701	1VX	C11-N10	-2.64	1.45	1.47
2	B	701	1VX	C11-N10	-2.63	1.45	1.47
2	C	701	1VX	C2-C7	-2.47	1.36	1.40
2	C	701	1VX	C7-C6	-2.41	1.36	1.40
2	B	701	1VX	C21-C16	-2.31	1.36	1.39
2	B	701	1VX	C6-C11	-2.30	1.49	1.52
2	A	701	1VX	C21-C16	-2.30	1.36	1.39
2	C	701	1VX	C1-C2	-2.21	1.46	1.51
2	A	701	1VX	C6-C11	-2.16	1.49	1.52
2	C	701	1VX	C20-C21	-2.05	1.36	1.39
2	A	701	1VX	C24-N10	2.36	1.39	1.34
2	B	701	1VX	C24-N10	2.41	1.39	1.34

All (13) bond angle outliers are listed below:

Mol	Chain	Res	Type	Atoms	Z	Observed(°)	Ideal(°)
2	C	701	1VX	C16-C15-N14	-5.55	99.67	102.42
2	A	701	1VX	C16-C15-N14	-3.75	100.56	102.42
2	B	701	1VX	C16-C15-N14	-3.72	100.58	102.42
2	C	701	1VX	C13-N14-C22	-2.38	118.65	123.74
2	A	701	1VX	O23-C22-C21	-2.35	124.00	128.68
2	B	701	1VX	O23-C22-C21	-2.26	124.17	128.68
2	B	701	1VX	C3-C2-C7	2.05	120.36	118.18
2	A	701	1VX	C15-C16-C21	2.07	110.97	109.66
2	C	701	1VX	C3-C2-C7	2.16	120.47	118.18
2	B	701	1VX	C15-C16-C21	2.20	111.06	109.66
2	B	701	1VX	O23-C22-N14	2.27	131.41	125.13
2	A	701	1VX	O23-C22-N14	2.32	131.56	125.13
2	C	701	1VX	C15-C16-C21	2.60	111.31	109.66

There are no chirality outliers.

There are no torsion outliers.

There are no ring outliers.

2 monomers are involved in 2 short contacts:

Mol	Chain	Res	Type	Clashes	Symm-Clashes
3	A	703	ACT	1	0
2	C	701	1VX	1	0

5.7 Other polymers [i](#)

There are no such residues in this entry.

5.8 Polymer linkage issues [i](#)

There are no chain breaks in this entry.

6 Fit of model and data ⓘ

6.1 Protein, DNA and RNA chains ⓘ

In the following table, the column labelled ‘#RSRZ> 2’ contains the number (and percentage) of RSRZ outliers, followed by percent RSRZ outliers for the chain as percentile scores relative to all X-ray entries and entries of similar resolution. The OWAB column contains the minimum, median, 95th percentile and maximum values of the occupancy-weighted average B-factor per residue. The column labelled ‘Q< 0.9’ lists the number of (and percentage) of residues with an average occupancy less than 0.9.

Mol	Chain	Analysed	<RSRZ>	#RSRZ>2	OWAB(Å ²)	Q<0.9
1	A	286/300 (95%)	0.10	8 (2%) 56 61	29, 37, 47, 53	0
1	B	285/300 (95%)	0.96	44 (15%) 3 3	32, 52, 70, 76	1 (0%)
1	C	287/300 (95%)	0.28	8 (2%) 56 61	28, 36, 46, 51	0
All	All	858/900 (95%)	0.45	60 (6%) 19 21	28, 39, 62, 76	1 (0%)

All (60) RSRZ outliers are listed below:

Mol	Chain	Res	Type	RSRZ
1	A	386	GLY	5.9
1	B	610	LEU	5.4
1	B	329	TYR	5.3
1	A	384	PRO	5.1
1	B	397	ASN	5.0
1	B	400	THR	4.9
1	B	399	MET	4.9
1	B	353	LEU	4.2
1	B	375	TYR	4.1
1	B	385	ASP	4.1
1	B	395	CYS	4.0
1	B	370	VAL	3.9
1	C	384	PRO	3.8
1	A	611	GLU	3.7
1	B	327	LEU	3.7
1	B	384	PRO	3.6
1	B	470	ARG	3.6
1	C	385	ASP	3.6
1	B	374	LEU	3.5
1	B	493	GLU	3.4
1	B	421	ILE	3.3
1	C	336	ARG	3.2
1	B	401	ASN	3.1

Continued on next page...

Continued from previous page...

Mol	Chain	Res	Type	RSRZ
1	A	383	SER	3.1
1	B	396	TYR	3.1
1	B	516	HIS	3.1
1	B	344	ALA	3.0
1	B	403	TRP	2.9
1	A	385	ASP	2.9
1	C	611	GLU	2.9
1	B	398	PRO	2.9
1	B	336	ARG	2.9
1	B	373	LEU	2.9
1	C	325	GLY	2.8
1	B	563	GLN	2.8
1	B	447	ARG	2.7
1	B	564	GLY	2.7
1	B	608	VAL	2.7
1	B	368	CYS	2.6
1	A	575[A]	HIS	2.5
1	B	356	ALA	2.4
1	B	402	GLN	2.4
1	B	404	SER	2.4
1	B	453	VAL	2.4
1	C	348	SER	2.4
1	C	447	ARG	2.4
1	B	348	SER	2.3
1	A	336	ARG	2.3
1	B	517	ASN	2.3
1	A	596	ARG	2.3
1	C	587	ASP	2.3
1	B	372	GLY	2.2
1	B	371	GLY	2.2
1	B	350	GLY	2.2
1	B	418	VAL	2.1
1	B	359	GLN	2.1
1	B	352	TRP	2.1
1	B	420	VAL	2.1
1	B	354	ASP	2.1
1	B	540	GLU	2.0

6.2 Non-standard residues in protein, DNA, RNA chains ⓘ

There are no non-standard protein/DNA/RNA residues in this entry.

6.3 Carbohydrates [i](#)

There are no carbohydrates in this entry.

6.4 Ligands [i](#)

In the following table, the Atoms column lists the number of modelled atoms in the group and the number defined in the chemical component dictionary. LLDF column lists the quality of electron density of the group with respect to its neighbouring residues in protein, DNA or RNA chains. The B-factors column lists the minimum, median, 95th percentile and maximum values of B factors of atoms in the group. The column labelled 'Q< 0.9' lists the number of atoms with occupancy less than 0.9.

Mol	Type	Chain	Res	Atoms	RSCC	RSR	LLDF	B-factors(Å ²)	Q<0.9
3	ACT	C	702	4/4	0.85	0.24	12.12	36,36,36,37	0
3	ACT	C	705	4/4	0.89	0.22	2.05	45,45,45,45	0
3	ACT	C	706	4/4	0.86	0.22	1.48	40,40,40,40	0
3	ACT	B	704	4/4	0.94	0.22	0.96	53,53,53,53	0
3	ACT	C	704	4/4	0.95	0.14	0.50	34,34,34,34	0
3	ACT	A	703	4/4	0.97	0.13	0.05	34,34,34,34	0
2	1VX	A	701	33/33	0.90	0.13	-1.19	36,36,36,36	0
2	1VX	B	701	33/33	0.91	0.12	-1.35	38,38,39,39	0
2	1VX	C	701	33/33	0.94	0.11	-2.73	33,34,34,34	0
3	ACT	B	702	4/4	0.96	0.10	-7.20	40,40,40,40	0
3	ACT	B	703	4/4	0.90	0.22	-	48,48,48,49	0
3	ACT	C	703	4/4	0.87	0.21	-	46,46,46,46	0
3	ACT	A	702	4/4	0.94	0.21	-	46,46,46,46	0

6.5 Other polymers [i](#)

There are no such residues in this entry.