



# Full wwPDB X-ray Structure Validation Report ⓘ

Feb 1, 2016 – 10:13 AM GMT

PDB ID : 3L9M  
Title : Crystal structure of PKAB3 (pka triple mutant V123A, L173M, Q181K) with compound 18  
Authors : Huang, X.  
Deposited on : 2010-01-05  
Resolution : 1.90 Å(reported)

This is a Full wwPDB X-ray Structure Validation Report for a publicly released PDB entry.  
We welcome your comments at [validation@mail.wwpdb.org](mailto:validation@mail.wwpdb.org)  
A user guide is available at  
<http://wwpdb.org/validation/2016/XrayValidationReportHelp>  
with specific help available everywhere you see the ⓘ symbol.

---

The following versions of software and data (see [references ⓘ](#)) were used in the production of this report:

MolProbity : 4.02b-467  
Mogul : 1.7 (RC4), CSD as536be (2015)  
Xtriage (Phenix) : 1.9-1692  
EDS : rb-20026688  
Percentile statistics : 20151230.v01 (using entries in the PDB archive December 30th 2015)  
Refmac : 5.8.0135  
CCP4 : 6.5.0  
Ideal geometry (proteins) : Engh & Huber (2001)  
Ideal geometry (DNA, RNA) : Parkinson et al. (1996)  
Validation Pipeline (wwPDB-VP) : trunk26865

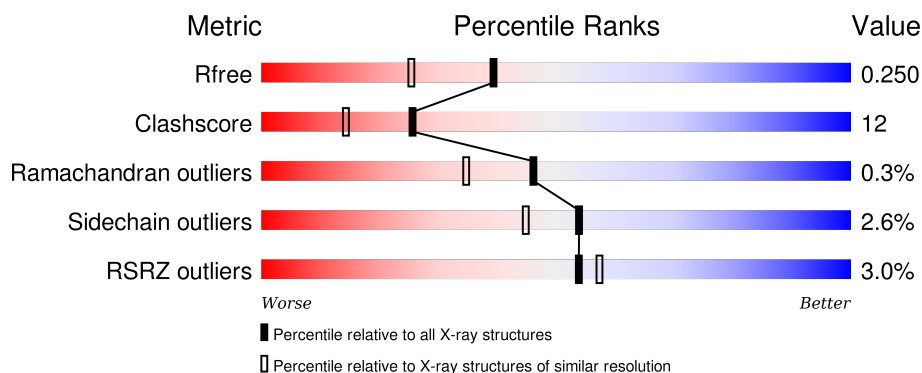
# 1 Overall quality at a glance

The following experimental techniques were used to determine the structure:

## *X-RAY DIFFRACTION*

The reported resolution of this entry is 1.90 Å.

Percentile scores (ranging between 0-100) for global validation metrics of the entry are shown in the following graphic. The table shows the number of entries on which the scores are based.



Metric	Whole archive (#Entries)	Similar resolution (#Entries, resolution range(Å))
$R_{free}$	91344	4755 (1.90-1.90)
Clashscore	102246	5398 (1.90-1.90)
Ramachandran outliers	100387	5338 (1.90-1.90)
Sidechain outliers	100360	5339 (1.90-1.90)
RSRZ outliers	91569	4766 (1.90-1.90)

The table below summarises the geometric issues observed across the polymeric chains and their fit to the electron density. The red, orange, yellow and green segments on the lower bar indicate the fraction of residues that contain outliers for  $\geq 3$ , 2, 1 and 0 types of geometric quality criteria. A grey segment represents the fraction of residues that are not modelled. The numeric value for each fraction is indicated below the corresponding segment, with a dot representing fractions  $\leq 5\%$ . The upper red bar (where present) indicates the fraction of residues that have poor fit to the electron density. The numeric value is given above the bar.

Mol	Chain	Length	Quality of chain
1	A	351	<div> <div></div> <div>75% 20% . .</div> </div>
1	B	351	<div> <div>4%</div> <div>77% 19% . .</div> </div>
2	C	20	<div> <div>5%</div> <div>90% 5% 5%</div> </div>
2	D	20	<div> <div>5%</div> <div>80% 10% 10%</div> </div>

## 2 Entry composition

There are 4 unique types of molecules in this entry. The entry contains 6669 atoms, of which 0 are hydrogens and 0 are deuteriums.

In the tables below, the ZeroOcc column contains the number of atoms modelled with zero occupancy, the AltConf column contains the number of residues with at least one atom in alternate conformation and the Trace column contains the number of residues modelled with at most 2 atoms.

- Molecule 1 is a protein called cAMP-dependent protein kinase catalytic subunit alpha.

Mol	Chain	Residues	Atoms						ZeroOcc	AltConf	Trace
1	A	340	Total	C	N	O	P	S	0	0	0
			2778	1802	463	502	2	9			
1	B	338	Total	C	N	O	P	S	0	0	0
			2772	1796	465	500	2	9			

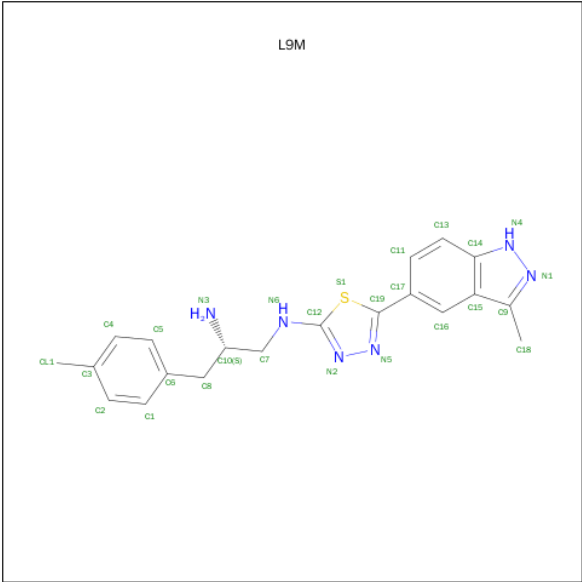
There are 6 discrepancies between the modelled and reference sequences:

Chain	Residue	Modelled	Actual	Comment	Reference
A	123	ALA	VAL	ENGINEERED MUTATION	UNP P17612
A	173	MET	LEU	ENGINEERED MUTATION	UNP P17612
A	181	LYS	GLN	ENGINEERED MUTATION	UNP P17612
B	123	ALA	VAL	ENGINEERED MUTATION	UNP P17612
B	173	MET	LEU	ENGINEERED MUTATION	UNP P17612
B	181	LYS	GLN	ENGINEERED MUTATION	UNP P17612

- Molecule 2 is a protein called cAMP-dependent protein kinase inhibitor alpha.

Mol	Chain	Residues	Atoms				ZeroOcc	AltConf	Trace
2	C	19	Total	C	N	O	0	0	0
			148	90	31	27			
2	D	18	Total	C	N	O	0	0	0
			138	84	28	26			

- Molecule 3 is (2S)-N 1 -[5-(3-METHYL-1H-INDAZOL-5-YL)-1,3,4-THIADIAZOL-2-YL]-3-(4-METHYLPHENYL)PROPANE-1,2-DIAMINE (three-letter code: L9M) (formula: C<sub>20</sub>H<sub>22</sub>N<sub>6</sub>S).



Mol	Chain	Residues	Atoms				ZeroOcc	AltConf
3	A	1	Total	C	N	S	0	0
			27	20	6	1		
3	B	1	Total	C	N	S	0	0
			27	20	6	1		

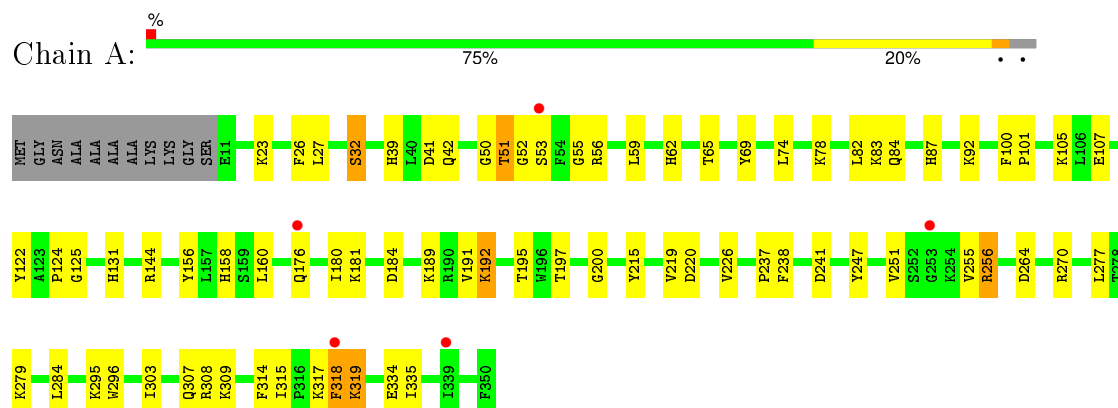
- Molecule 4 is water.

Mol	Chain	Residues	Atoms		ZeroOcc	AltConf
4	A	349	Total	O	4	0
			349	349		
4	C	40	Total	O	0	0
			40	40		
4	B	350	Total	O	0	0
			350	350		
4	D	40	Total	O	1	0
			40	40		

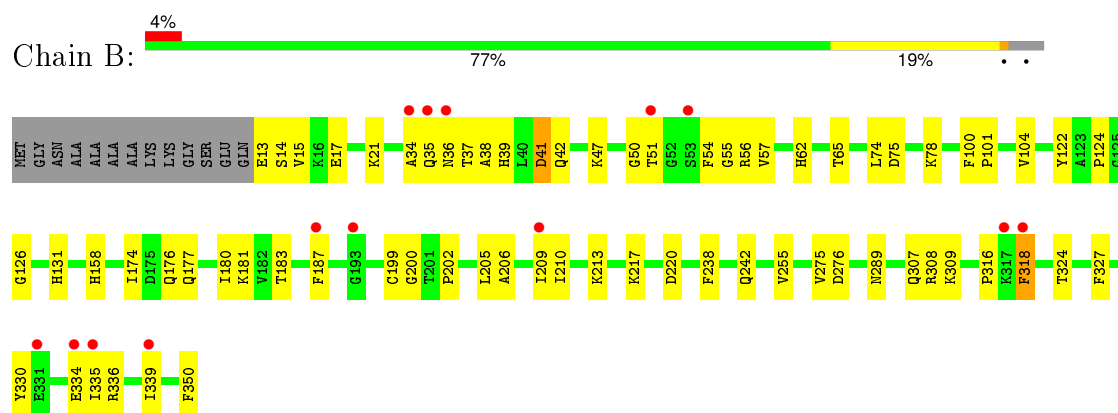
### 3 Residue-property plots [i](#)

These plots are drawn for all protein, RNA and DNA chains in the entry. The first graphic for a chain summarises the proportions of errors displayed in the second graphic. The second graphic shows the sequence view annotated by issues in geometry and electron density. Residues are color-coded according to the number of geometric quality criteria for which they contain at least one outlier: green = 0, yellow = 1, orange = 2 and red = 3 or more. A red dot above a residue indicates a poor fit to the electron density ( $RSRZ > 2$ ). Stretches of 2 or more consecutive residues without any outlier are shown as a green connector. Residues present in the sample, but not in the model, are shown in grey.

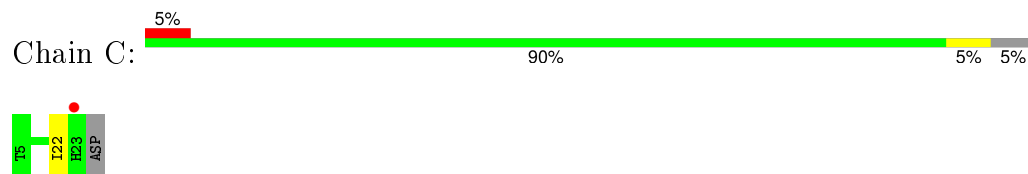
- Molecule 1: cAMP-dependent protein kinase catalytic subunit alpha



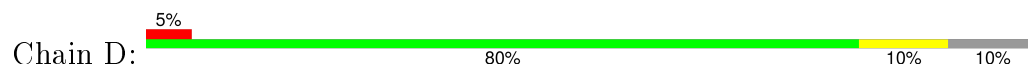
- Molecule 1: cAMP-dependent protein kinase catalytic subunit alpha

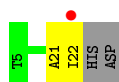


- Molecule 2: cAMP-dependent protein kinase inhibitor alpha



- Molecule 2: cAMP-dependent protein kinase inhibitor alpha





## 4 Data and refinement statistics

Property	Value	Source
Space group	C 1 2 1	Depositor
Cell constants a, b, c, $\alpha$ , $\beta$ , $\gamma$	117.91Å 114.99Å 72.06Å 90.00° 125.44° 90.00°	Depositor
Resolution (Å)	30.00 – 1.90 29.68 – 1.90	Depositor EDS
% Data completeness (in resolution range)	(Not available) (30.00-1.90) 97.9 (29.68-1.90)	Depositor EDS
$R_{merge}$	(Not available)	Depositor
$R_{sym}$	(Not available)	Depositor
$\langle I/\sigma(I) \rangle$ <sup>1</sup>	3.20 (at 1.89Å)	Xtriage
Refinement program	CNS	Depositor
R, $R_{free}$	0.223 , 0.270 0.212 , 0.250	Depositor DCC
$R_{free}$ test set	3044 reflections (5.04%)	DCC
Wilson B-factor (Å <sup>2</sup> )	18.4	Xtriage
Anisotropy	0.295	Xtriage
Bulk solvent $k_{sol}$ (e/Å <sup>3</sup> ), $B_{sol}$ (Å <sup>2</sup> )	0.32 , 50.8	EDS
Estimated twinning fraction	0.088 for -h-2*k,l	Xtriage
L-test for twinning <sup>2</sup>	$\langle  L  \rangle = 0.50$ , $\langle L^2 \rangle = 0.33$	Xtriage
Outliers	0 of 60408 reflections	Xtriage
$F_o, F_c$ correlation	0.94	EDS
Total number of atoms	6669	wwPDB-VP
Average B, all atoms (Å <sup>2</sup> )	20.0	wwPDB-VP

Xtriage's analysis on translational NCS is as follows: *The largest off-origin peak in the Patterson function is 4.47% of the height of the origin peak. No significant pseudotranslation is detected.*

<sup>1</sup>Intensities estimated from amplitudes.

<sup>2</sup>Theoretical values of  $\langle |L| \rangle$ ,  $\langle L^2 \rangle$  for acentric reflections are 0.5, 0.375 respectively for untwinned datasets, and 0.333, 0.2 for perfectly twinned datasets.

## 5 Model quality [i](#)

### 5.1 Standard geometry [i](#)

Bond lengths and bond angles in the following residue types are not validated in this section: TPO, L9M, SEP

The Z score for a bond length (or angle) is the number of standard deviations the observed value is removed from the expected value. A bond length (or angle) with  $|Z| > 5$  is considered an outlier worth inspection. RMSZ is the root-mean-square of all Z scores of the bond lengths (or angles).

Mol	Chain	Bond lengths		Bond angles	
		RMSZ	$\# Z  > 5$	RMSZ	$\# Z  > 5$
1	A	0.36	0/2828	0.59	0/3811
1	B	0.37	0/2822	0.60	0/3803
2	C	0.37	0/150	0.57	0/201
2	D	0.38	0/139	0.56	0/186
All	All	0.37	0/5939	0.59	0/8001

There are no bond length outliers.

There are no bond angle outliers.

There are no chirality outliers.

There are no planarity outliers.

### 5.2 Too-close contacts [i](#)

In the following table, the Non-H and H(model) columns list the number of non-hydrogen atoms and hydrogen atoms in the chain respectively. The H(added) column lists the number of hydrogen atoms added and optimized by MolProbity. The Clashes column lists the number of clashes within the asymmetric unit, whereas Symm-Clashes lists symmetry related clashes.

Mol	Chain	Non-H	H(model)	H(added)	Clashes	Symm-Clashes
1	A	2778	0	2737	63	0
1	B	2772	0	2733	79	0
2	C	148	0	142	1	0
2	D	138	0	135	4	0
3	A	27	0	22	4	0
3	B	27	0	22	1	0
4	A	349	0	0	14	2
4	B	350	0	0	20	0
4	C	40	0	0	0	0

*Continued on next page...*



*Continued from previous page...*

Mol	Chain	Non-H	H(model)	H(added)	Clashes	Symm-Clashes
4	D	40	0	0	1	0
All	All	6669	0	5791	146	2

The all-atom clashscore is defined as the number of clashes found per 1000 atoms (including hydrogen atoms). The all-atom clashscore for this structure is 12.

All (146) close contacts within the same asymmetric unit are listed below, sorted by their clash magnitude.

Atom-1	Atom-2	Interatomic distance (Å)	Clash overlap (Å)
3:A:351:L9M:C3	3:A:351:L9M:CL1	1.76	1.58
1:B:206:ALA:O	1:B:209:ILE:HG22	1.65	0.96
1:B:205:LEU:HD22	1:B:209:ILE:HD13	1.46	0.94
1:A:319:LYS:N	1:A:319:LYS:HE3	1.90	0.86
1:B:13:GLU:HG3	1:B:15:VAL:H	1.42	0.80
1:A:41:ASP:HB3	4:A:748:HOH:O	1.83	0.78
1:B:39:HIS:HD2	1:B:41:ASP:H	1.33	0.76
1:B:275:VAL:HG12	4:B:743:HOH:O	1.85	0.76
1:B:39:HIS:H	1:B:42:GLN:NE2	1.84	0.74
1:B:35:GLN:HA	4:B:437:HOH:O	1.87	0.74
1:B:176:GLN:HG3	1:B:318:PHE:HZ	1.52	0.74
1:B:318:PHE:HD1	1:B:318:PHE:N	1.86	0.73
1:B:34:ALA:HB1	4:B:959:HOH:O	1.87	0.73
1:B:36:ASN:ND2	4:B:364:HOH:O	2.21	0.72
1:B:205:LEU:HB3	1:B:209:ILE:HG21	1.71	0.71
1:B:334:GLU:OE1	1:B:336:ARG:HB2	1.91	0.71
1:B:176:GLN:CG	1:B:318:PHE:HZ	2.06	0.69
1:B:318:PHE:CD1	1:B:318:PHE:N	2.59	0.68
1:A:78:LYS:HE2	1:A:82:LEU:HD11	1.73	0.68
1:A:23:LYS:O	1:A:27:LEU:HD23	1.94	0.67
2:D:22:ILE:HA	4:D:607:HOH:O	1.93	0.67
1:A:62:HIS:HD2	1:A:65:THR:H	1.41	0.67
1:A:39:HIS:H	1:A:42:GLN:NE2	1.93	0.66
1:B:35:GLN:HG2	1:B:350:PHE:OXT	1.96	0.66
1:A:264:ASP:CG	1:A:295:LYS:HG2	2.16	0.66
1:A:319:LYS:HE3	1:A:319:LYS:H	1.60	0.66
1:B:39:HIS:N	1:B:42:GLN:NE2	2.44	0.65
1:B:47:LYS:HD3	1:B:324:THR:HG21	1.79	0.65
1:B:205:LEU:HB3	1:B:209:ILE:CG2	2.27	0.64
1:B:187:PHE:HE2	2:D:21:ALA:HB1	1.63	0.64
1:B:13:GLU:HG3	1:B:15:VAL:N	2.12	0.63
1:A:317:LYS:NZ	4:A:1011:HOH:O	2.31	0.63

*Continued on next page...*

*Continued from previous page...*

Atom-1	Atom-2	Interatomic distance (Å)	Clash overlap (Å)
1:A:51:THR:HG23	1:A:56:ARG:HB3	1.80	0.63
1:A:51:THR:HG22	1:A:52:GLY:H	1.65	0.62
1:B:335:ILE:O	1:B:335:ILE:HG23	1.99	0.62
1:B:39:HIS:N	1:B:42:GLN:HE21	1.98	0.61
1:B:55:GLY:HA2	4:B:982:HOH:O	2.00	0.60
1:B:47:LYS:HD3	1:B:324:THR:CG2	2.31	0.60
1:B:213:LYS:HE2	4:B:833:HOH:O	2.01	0.59
1:A:189:LYS:HE2	1:A:191:VAL:CG1	2.31	0.59
1:B:17:GLU:O	1:B:21:LYS:HE2	2.03	0.59
1:B:62:HIS:HD2	1:B:65:THR:H	1.49	0.59
1:A:100:PHE:CG	1:A:101:PRO:HD2	2.39	0.58
1:B:62:HIS:CD2	1:B:65:THR:H	2.21	0.58
1:B:39:HIS:H	1:B:42:GLN:HE21	1.52	0.58
3:A:351:L9M:CL1	3:A:351:L9M:C2	2.73	0.58
1:B:316:PRO:HG2	4:B:535:HOH:O	2.05	0.57
1:A:100:PHE:CD1	1:A:101:PRO:HD2	2.39	0.56
1:B:316:PRO:HB3	4:B:601:HOH:O	2.05	0.56
1:A:158:HIS:HE1	1:A:220:ASP:OD2	1.89	0.56
1:B:308:ARG:NH1	4:B:424:HOH:O	2.38	0.56
1:B:37:THR:HG23	4:B:959:HOH:O	2.05	0.56
1:B:187:PHE:CE2	2:D:21:ALA:HB1	2.41	0.56
1:B:74:LEU:HD12	1:B:74:LEU:N	2.21	0.56
1:B:200:GLY:O	2:D:22:ILE:HG12	2.07	0.54
1:A:39:HIS:H	1:A:42:GLN:HE21	1.54	0.54
1:A:74:LEU:HD12	1:A:74:LEU:N	2.23	0.53
1:A:189:LYS:HE2	1:A:191:VAL:HG11	1.91	0.53
1:B:275:VAL:CG1	4:B:743:HOH:O	2.52	0.53
1:A:192:LYS:O	1:A:192:LYS:HG3	2.09	0.52
1:B:209:ILE:HG23	1:B:210:ILE:N	2.23	0.52
1:B:318:PHE:CB	4:B:744:HOH:O	2.58	0.52
1:B:100:PHE:CD1	1:B:101:PRO:HD2	2.45	0.51
1:A:56:ARG:HH22	1:A:335:ILE:HA	1.75	0.51
1:B:176:GLN:HG3	1:B:318:PHE:CZ	2.40	0.51
1:A:303:ILE:HD13	4:A:756:HOH:O	2.11	0.50
1:A:314:PHE:C	1:A:315:ILE:HD12	2.32	0.50
1:A:318:PHE:O	1:A:318:PHE:CD1	2.65	0.50
1:A:122:TYR:O	1:A:124:PRO:HD3	2.11	0.49
1:A:189:LYS:HG2	1:A:191:VAL:HG13	1.92	0.49
1:A:39:HIS:N	1:A:42:GLN:HE21	2.11	0.49
1:B:318:PHE:H	1:B:318:PHE:HD1	1.59	0.49
1:A:39:HIS:N	1:A:42:GLN:NE2	2.60	0.49

*Continued on next page...*

*Continued from previous page...*

Atom-1	Atom-2	Interatomic distance (Å)	Clash overlap (Å)
1:A:335:ILE:N	1:A:335:ILE:HD12	2.27	0.49
1:A:23:LYS:O	1:A:27:LEU:CD2	2.61	0.49
1:A:180:ILE:CG2	1:A:181:LYS:N	2.76	0.48
1:B:177:GLN:HB2	4:B:395:HOH:O	2.11	0.48
1:A:105:LYS:HE2	4:A:708:HOH:O	2.13	0.48
1:B:174:ILE:HD13	1:B:180:ILE:HD13	1.95	0.48
1:A:26:PHE:HD2	1:A:27:LEU:HD22	1.79	0.47
1:A:192:LYS:HE2	1:A:192:LYS:O	2.15	0.47
1:A:53:SER:C	1:A:55:GLY:H	2.17	0.47
1:A:279:LYS:HA	1:A:284:LEU:HD21	1.96	0.47
1:B:51:THR:HG22	1:B:330:TYR:CD2	2.50	0.47
1:B:275:VAL:HG23	1:B:276:ASP:N	2.29	0.47
1:B:104:VAL:HG11	1:B:183:THR:HG22	1.97	0.47
1:A:180:ILE:HG22	1:A:181:LYS:N	2.30	0.46
1:B:158:HIS:HE1	1:B:220:ASP:OD2	1.97	0.46
1:B:176:GLN:CD	1:B:318:PHE:HZ	2.18	0.46
1:A:158:HIS:HD2	4:A:408:HOH:O	1.97	0.46
1:A:247:TYR:O	1:A:251:VAL:HG22	2.15	0.46
1:A:238:PHE:CZ	1:A:255:VAL:HG22	2.51	0.46
1:B:307:GLN:HE21	1:B:309:LYS:HD2	1.81	0.46
1:B:47:LYS:CD	1:B:324:THR:HG21	2.46	0.46
1:B:335:ILE:HG22	4:B:475:HOH:O	2.16	0.46
3:A:351:L9M:CL1	3:A:351:L9M:C4	2.77	0.45
1:A:50:GLY:HA3	3:A:351:L9M:H4	1.99	0.45
1:B:131:HIS:HB2	4:B:534:HOH:O	2.15	0.45
1:B:238:PHE:CZ	1:B:255:VAL:HG22	2.51	0.45
1:B:318:PHE:HB3	4:B:744:HOH:O	2.16	0.45
1:A:84:GLN:HA	1:A:87:HIS:HD2	1.80	0.45
1:B:75:ASP:HB3	1:B:78:LYS:HD2	1.99	0.45
1:A:195:THR:OG1	1:A:197:TPO:O2P	2.26	0.45
1:B:289:ASN:ND2	4:B:781:HOH:O	2.49	0.45
1:B:334:GLU:HG3	1:B:334:GLU:O	2.15	0.45
1:B:177:GLN:NE2	4:B:403:HOH:O	2.50	0.45
1:B:199:CYS:O	1:B:209:ILE:HD11	2.16	0.44
1:A:144:ARG:NE	1:A:296:TRP:O	2.51	0.44
1:B:176:GLN:CG	1:B:318:PHE:CZ	2.94	0.44
1:A:105:LYS:HD3	4:A:580:HOH:O	2.17	0.44
1:B:209:ILE:CG2	1:B:210:ILE:N	2.80	0.44
1:A:156:TYR:O	1:A:160:LEU:HD13	2.18	0.43
1:A:256:ARG:HG3	4:A:929:HOH:O	2.18	0.43
1:A:69:TYR:CE1	1:A:107:GLU:HG3	2.52	0.43

*Continued on next page...*

*Continued from previous page...*

Atom-1	Atom-2	Interatomic distance (Å)	Clash overlap (Å)
1:A:308:ARG:NH1	1:A:308:ARG:HB3	2.33	0.43
1:B:55:GLY:CA	4:B:982:HOH:O	2.64	0.43
1:B:180:ILE:CG2	1:B:181:LYS:N	2.81	0.43
1:B:180:ILE:HG22	1:B:181:LYS:N	2.34	0.43
1:B:38:ALA:HA	1:B:42:GLN:HE22	1.84	0.43
1:B:39:HIS:CD2	1:B:41:ASP:H	2.24	0.43
1:B:50:GLY:HA3	3:B:351:L9M:H4	2.01	0.42
1:B:54:PHE:HE2	1:B:57:VAL:HG23	1.83	0.42
1:B:176:GLN:CD	1:B:318:PHE:CZ	2.93	0.42
1:B:13:GLU:HG2	1:B:15:VAL:HB	2.00	0.42
1:A:307:GLN:HE21	1:A:309:LYS:HD2	1.84	0.42
1:B:13:GLU:CG	1:B:15:VAL:HB	2.50	0.42
1:A:83:LYS:NZ	4:A:370:HOH:O	2.53	0.42
1:A:264:ASP:OD1	1:A:295:LYS:HG2	2.19	0.42
1:A:125:GLY:O	1:A:131:HIS:CE1	2.73	0.42
1:A:226:VAL:HG13	1:A:237:PRO:HD2	2.01	0.42
1:A:315:ILE:N	1:A:315:ILE:HD12	2.34	0.41
1:A:131:HIS:HD2	4:A:377:HOH:O	2.03	0.41
1:B:126:GLY:HA2	1:B:327:PHE:CZ	2.55	0.41
1:A:215:TYR:CD2	1:A:219:VAL:HG11	2.55	0.41
1:A:131:HIS:CD2	4:A:377:HOH:O	2.73	0.41
1:B:122:TYR:O	1:B:124:PRO:HD3	2.20	0.41
1:B:339:ILE:O	1:B:339:ILE:HG22	2.19	0.41
1:A:32:SER:HB2	4:A:530:HOH:O	2.20	0.41
1:B:104:VAL:HG13	1:B:181:LYS:HB3	2.02	0.41
1:B:176:GLN:NE2	4:B:474:HOH:O	2.54	0.41
1:A:308:ARG:HD2	4:A:897:HOH:O	2.21	0.41
1:A:270:ARG:NH2	4:A:465:HOH:O	2.53	0.41
1:A:200:GLY:O	2:C:22:ILE:HG12	2.21	0.40
1:A:189:LYS:CE	1:A:191:VAL:HG11	2.51	0.40
1:A:277:LEU:HD13	4:A:485:HOH:O	2.20	0.40
1:B:217:LYS:HE2	1:B:217:LYS:HB3	1.94	0.40

All (2) symmetry-related close contacts are listed below. The label for Atom-2 includes the symmetry operator and encoded unit-cell translations to be applied.

Atom-1	Atom-2	Interatomic distance (Å)	Clash overlap (Å)
4:A:521:HOH:O	4:A:521:HOH:O[2_555]	1.65	0.55
4:A:792:HOH:O	4:A:792:HOH:O[2_555]	1.77	0.43

## 5.3 Torsion angles [i](#)

### 5.3.1 Protein backbone [i](#)

In the following table, the Percentiles column shows the percent Ramachandran outliers of the chain as a percentile score with respect to all X-ray entries followed by that with respect to entries of similar resolution.

The Analysed column shows the number of residues for which the backbone conformation was analysed, and the total number of residues.

Mol	Chain	Analysed	Favoured	Allowed	Outliers	Percentiles	
1	A	336/351 (96%)	326 (97%)	9 (3%)	1 (0%)	46	35
1	B	334/351 (95%)	322 (96%)	11 (3%)	1 (0%)	46	35
2	C	17/20 (85%)	17 (100%)	0	0	100	100
2	D	16/20 (80%)	16 (100%)	0	0	100	100
All	All	703/742 (95%)	681 (97%)	20 (3%)	2 (0%)	46	35

All (2) Ramachandran outliers are listed below:

Mol	Chain	Res	Type
1	A	184	ASP
1	B	202	PRO

### 5.3.2 Protein sidechains [i](#)

In the following table, the Percentiles column shows the percent sidechain outliers of the chain as a percentile score with respect to all X-ray entries followed by that with respect to entries of similar resolution.

The Analysed column shows the number of residues for which the sidechain conformation was analysed, and the total number of residues.

Mol	Chain	Analysed	Rotameric	Outliers	Percentiles	
1	A	291/303 (96%)	280 (96%)	11 (4%)	40	28
1	B	291/303 (96%)	286 (98%)	5 (2%)	68	64
2	C	14/15 (93%)	14 (100%)	0	100	100
2	D	13/15 (87%)	13 (100%)	0	100	100
All	All	609/636 (96%)	593 (97%)	16 (3%)	54	45

All (16) residues with a non-rotameric sidechain are listed below:

Mol	Chain	Res	Type
1	A	32	SER
1	A	51	THR
1	A	59	LEU
1	A	92	LYS
1	A	176	GLN
1	A	192	LYS
1	A	241	ASP
1	A	256	ARG
1	A	318	PHE
1	A	319	LYS
1	A	334	GLU
1	B	14	SER
1	B	41	ASP
1	B	56	ARG
1	B	242	GLN
1	B	318	PHE

Some sidechains can be flipped to improve hydrogen bonding and reduce clashes. All (28) such sidechains are listed below:

Mol	Chain	Res	Type
1	A	39	HIS
1	A	42	GLN
1	A	62	HIS
1	A	67	ASN
1	A	84	GLN
1	A	113	ASN
1	A	131	HIS
1	A	158	HIS
1	A	271	ASN
1	A	307	GLN
2	C	20	ASN
1	B	35	GLN
1	B	36	ASN
1	B	39	HIS
1	B	42	GLN
1	B	62	HIS
1	B	68	HIS
1	B	84	GLN
1	B	87	HIS
1	B	99	ASN
1	B	113	ASN
1	B	158	HIS
1	B	176	GLN

*Continued on next page...*

*Continued from previous page...*

Mol	Chain	Res	Type
1	B	242	GLN
1	B	271	ASN
1	B	289	ASN
1	B	307	GLN
2	D	20	ASN

### 5.3.3 RNA ⓘ

There are no RNA molecules in this entry.

## 5.4 Non-standard residues in protein, DNA, RNA chains ⓘ

4 non-standard protein/DNA/RNA residues are modelled in this entry.

In the following table, the Counts columns list the number of bonds (or angles) for which Mogul statistics could be retrieved, the number of bonds (or angles) that are observed in the model and the number of bonds (or angles) that are defined in the chemical component dictionary. The Link column lists molecule types, if any, to which the group is linked. The Z score for a bond length (or angle) is the number of standard deviations the observed value is removed from the expected value. A bond length (or angle) with  $|Z| > 2$  is considered an outlier worth inspection. RMSZ is the root-mean-square of all Z scores of the bond lengths (or angles).

Mol	Type	Chain	Res	Link	Bond lengths			Bond angles		
					Counts	RMSZ	$\# Z  > 2$	Counts	RMSZ	$\# Z  > 2$
1	TPO	A	197	1	8,10,11	0.75	0	7,14,16	1.90	2 (28%)
1	SEP	A	338	1	8,9,10	0.88	0	8,12,14	2.07	1 (12%)
1	TPO	B	197	1	8,10,11	0.65	0	7,14,16	1.76	2 (28%)
1	SEP	B	338	1	8,9,10	0.88	0	8,12,14	1.77	1 (12%)

In the following table, the Chirals column lists the number of chiral outliers, the number of chiral centers analysed, the number of these observed in the model and the number defined in the chemical component dictionary. Similar counts are reported in the Torsion and Rings columns. '-' means no outliers of that kind were identified.

Mol	Type	Chain	Res	Link	Chirals	Torsions	Rings
1	TPO	A	197	1	-	0/8/11/13	0/0/0/0
1	SEP	A	338	1	-	0/6/8/10	0/0/0/0
1	TPO	B	197	1	-	0/8/11/13	0/0/0/0
1	SEP	B	338	1	-	0/6/8/10	0/0/0/0

There are no bond length outliers.

All (6) bond angle outliers are listed below:

Mol	Chain	Res	Type	Atoms	Z	Observed(°)	Ideal(°)
1	A	197	TPO	CG2-CB-CA	-2.38	108.33	113.17
1	B	197	TPO	CG2-CB-CA	-2.18	108.73	113.17
1	B	197	TPO	C-CA-N	3.34	116.81	109.83
1	A	197	TPO	C-CA-N	3.73	117.63	109.83
1	B	338	SEP	OG-CB-CA	4.12	111.79	108.27
1	A	338	SEP	OG-CB-CA	5.37	112.86	108.27

There are no chirality outliers.

There are no torsion outliers.

There are no ring outliers.

1 monomer is involved in 1 short contact:

Mol	Chain	Res	Type	Clashes	Symm-Clashes
1	A	197	TPO	1	0

## 5.5 Carbohydrates [i](#)

There are no carbohydrates in this entry.

## 5.6 Ligand geometry [i](#)

2 ligands are modelled in this entry.

In the following table, the Counts columns list the number of bonds (or angles) for which Mogul statistics could be retrieved, the number of bonds (or angles) that are observed in the model and the number of bonds (or angles) that are defined in the chemical component dictionary. The Link column lists molecule types, if any, to which the group is linked. The Z score for a bond length (or angle) is the number of standard deviations the observed value is removed from the expected value. A bond length (or angle) with  $|Z| > 2$  is considered an outlier worth inspection. RMSZ is the root-mean-square of all Z scores of the bond lengths (or angles).

Mol	Type	Chain	Res	Link	Bond lengths			Bond angles		
					Counts	RMSZ	$\# Z  > 2$	Counts	RMSZ	$\# Z  > 2$
3	L9M	A	351	-	24,30,30	3.22	17 (70%)	21,42,42	2.71	9 (42%)
3	L9M	B	351	-	24,30,30	3.09	17 (70%)	21,42,42	2.88	11 (52%)

In the following table, the Chirals column lists the number of chiral outliers, the number of chiral centers analysed, the number of these observed in the model and the number defined in the chemical component dictionary. Similar counts are reported in the Torsion and Rings columns. '-' means



no outliers of that kind were identified.

Mol	Type	Chain	Res	Link	Chirals	Torsions	Rings
3	L9M	A	351	-	-	0/11/13/13	0/3/4/4
3	L9M	B	351	-	-	0/11/13/13	0/3/4/4

All (34) bond length outliers are listed below:

Mol	Chain	Res	Type	Atoms	Z	Observed(Å)	Ideal(Å)
3	A	351	L9M	N5-N2	-6.39	1.24	1.37
3	B	351	L9M	N5-N2	-6.24	1.25	1.37
3	A	351	L9M	C18-C9	-4.52	1.47	1.50
3	B	351	L9M	C18-C9	-4.43	1.47	1.50
3	B	351	L9M	N4-N1	-2.13	1.33	1.37
3	A	351	L9M	C19-S1	2.13	1.76	1.73
3	A	351	L9M	C7-N6	2.17	1.49	1.45
3	B	351	L9M	C2-C3	2.20	1.45	1.38
3	A	351	L9M	C15-C14	2.32	1.48	1.42
3	B	351	L9M	C4-C3	2.43	1.45	1.38
3	B	351	L9M	C15-C14	2.47	1.49	1.42
3	B	351	L9M	C1-C6	2.48	1.44	1.38
3	B	351	L9M	C19-S1	2.50	1.77	1.73
3	A	351	L9M	C2-C3	2.53	1.46	1.38
3	A	351	L9M	C4-C3	2.54	1.46	1.38
3	B	351	L9M	C2-C1	2.62	1.43	1.38
3	A	351	L9M	C13-C14	2.75	1.46	1.41
3	A	351	L9M	C5-C4	2.75	1.43	1.38
3	B	351	L9M	C5-C4	2.78	1.43	1.38
3	B	351	L9M	C5-C6	2.92	1.45	1.38
3	B	351	L9M	C13-C14	3.02	1.47	1.41
3	B	351	L9M	C11-C17	3.09	1.45	1.39
3	A	351	L9M	C5-C6	3.22	1.45	1.38
3	A	351	L9M	C1-C6	3.35	1.45	1.38
3	A	351	L9M	C2-C1	3.46	1.45	1.38
3	A	351	L9M	C11-C17	3.50	1.46	1.39
3	A	351	L9M	C12-N6	3.52	1.40	1.35
3	B	351	L9M	C16-C17	3.99	1.48	1.38
3	A	351	L9M	C16-C17	4.02	1.48	1.38
3	A	351	L9M	C13-C11	4.02	1.45	1.36
3	B	351	L9M	C13-C11	4.25	1.45	1.36
3	B	351	L9M	C12-N6	4.60	1.42	1.35
3	B	351	L9M	CL1-C3	5.61	1.71	1.51
3	A	351	L9M	CL1-C3	6.70	1.76	1.51

All (20) bond angle outliers are listed below:

Mol	Chain	Res	Type	Atoms	Z	Observed(°)	Ideal(°)
3	A	351	L9M	C16-C15-C14	-8.48	116.99	120.34
3	B	351	L9M	C16-C15-C14	-7.55	117.36	120.34
3	B	351	L9M	C5-C4-C3	-3.77	116.32	121.39
3	B	351	L9M	C1-C2-C3	-3.36	116.86	121.39
3	A	351	L9M	C5-C4-C3	-3.10	117.22	121.39
3	B	351	L9M	C11-C13-C14	-3.02	117.60	120.88
3	A	351	L9M	C1-C2-C3	-2.88	117.52	121.39
3	B	351	L9M	C2-C1-C6	-2.51	117.60	121.04
3	B	351	L9M	C4-C5-C6	-2.44	117.70	121.04
3	A	351	L9M	C2-C1-C6	-2.35	117.83	121.04
3	A	351	L9M	C18-C9-N1	2.18	124.60	119.73
3	B	351	L9M	C11-C17-C16	2.32	121.65	118.11
3	A	351	L9M	C13-C14-N4	2.58	134.57	130.22
3	A	351	L9M	C4-C3-C2	2.74	124.74	118.15
3	B	351	L9M	C18-C9-N1	2.75	125.89	119.73
3	A	351	L9M	C11-C17-C16	2.80	122.38	118.11
3	B	351	L9M	C13-C14-N4	3.15	135.53	130.22
3	B	351	L9M	C4-C3-C2	3.26	126.00	118.15
3	A	351	L9M	C5-C6-C1	3.63	123.94	118.13
3	B	351	L9M	C5-C6-C1	4.61	125.51	118.13

There are no chirality outliers.

There are no torsion outliers.

There are no ring outliers.

2 monomers are involved in 5 short contacts:

Mol	Chain	Res	Type	Clashes	Symm-Clashes
3	A	351	L9M	4	0
3	B	351	L9M	1	0

## 5.7 Other polymers

There are no such residues in this entry.

## 5.8 Polymer linkage issues

There are no chain breaks in this entry.

## 6 Fit of model and data

### 6.1 Protein, DNA and RNA chains

In the following table, the column labelled ‘#RSRZ> 2’ contains the number (and percentage) of RSRZ outliers, followed by percent RSRZ outliers for the chain as percentile scores relative to all X-ray entries and entries of similar resolution. The OWAB column contains the minimum, median, 95<sup>th</sup> percentile and maximum values of the occupancy-weighted average B-factor per residue. The column labelled ‘Q< 0.9’ lists the number of (and percentage) of residues with an average occupancy less than 0.9.

Mol	Chain	Analysed	<RSRZ>	#RSRZ>2	OWAB(Å <sup>2</sup> )	Q<0.9
1	A	338/351 (96%)	0.07	5 (1%) 76 79	10, 19, 32, 37	0
1	B	336/351 (95%)	0.14	14 (4%) 40 44	11, 18, 32, 41	0
2	C	19/20 (95%)	-0.09	1 (5%) 30 33	13, 17, 28, 37	0
2	D	18/20 (90%)	-0.19	1 (5%) 28 31	12, 16, 25, 33	0
All	All	711/742 (95%)	0.09	21 (2%) 54 57	10, 18, 32, 41	0

All (21) RSRZ outliers are listed below:

Mol	Chain	Res	Type	RSRZ
1	B	318	PHE	7.9
1	B	34	ALA	6.1
1	A	318	PHE	5.8
2	C	23	HIS	5.1
1	A	339	ILE	4.3
2	D	22	ILE	3.3
1	B	193	GLY	3.0
1	B	335	ILE	2.9
1	A	253	GLY	2.9
1	B	36	ASN	2.8
1	B	339	ILE	2.8
1	A	53	SER	2.8
1	B	334	GLU	2.6
1	A	176	GLN	2.6
1	B	53	SER	2.5
1	B	35	GLN	2.4
1	B	51	THR	2.4
1	B	209	ILE	2.2
1	B	331	GLU	2.1
1	B	317	LYS	2.1
1	B	187	PHE	2.0

## 6.2 Non-standard residues in protein, DNA, RNA chains ⓘ

In the following table, the Atoms column lists the number of modelled atoms in the group and the number defined in the chemical component dictionary. LLDF column lists the quality of electron density of the group with respect to its neighbouring residues in protein, DNA or RNA chains. The B-factors column lists the minimum, median, 95<sup>th</sup> percentile and maximum values of B factors of atoms in the group. The column labelled 'Q< 0.9' lists the number of atoms with occupancy less than 0.9.

Mol	Type	Chain	Res	Atoms	RSCC	RSR	LLDF	B-factors(Å <sup>2</sup> )	Q<0.9
1	SEP	A	338	10/11	0.89	0.14	-	33,34,36,36	0
1	TPO	A	197	11/12	0.96	0.09	-	14,15,16,17	0
1	SEP	B	338	10/11	0.94	0.08	-	25,26,27,27	0
1	TPO	B	197	11/12	0.95	0.08	-	16,18,18,19	0

## 6.3 Carbohydrates ⓘ

There are no carbohydrates in this entry.

## 6.4 Ligands ⓘ

In the following table, the Atoms column lists the number of modelled atoms in the group and the number defined in the chemical component dictionary. LLDF column lists the quality of electron density of the group with respect to its neighbouring residues in protein, DNA or RNA chains. The B-factors column lists the minimum, median, 95<sup>th</sup> percentile and maximum values of B factors of atoms in the group. The column labelled 'Q< 0.9' lists the number of atoms with occupancy less than 0.9.

Mol	Type	Chain	Res	Atoms	RSCC	RSR	LLDF	B-factors(Å <sup>2</sup> )	Q<0.9
3	L9M	A	351	27/27	0.82	0.16	1.44	10,15,20,29	0
3	L9M	B	351	27/27	0.82	0.17	1.29	13,15,21,31	0

## 6.5 Other polymers ⓘ

There are no such residues in this entry.