



Full wwPDB X-ray Structure Validation Report ⓘ

Feb 1, 2016 – 10:15 AM GMT

PDB ID : 3LEV
Title : HIV-1 antibody 2F5 in complex with epitope scaffold ES2
Authors : Ofek, G.; Guenaga, F.J.; Schief, W.R.; Skinner, J.; Baker, D.; Wyatt, R.;
Kwong, P.D.
Deposited on : 2010-01-15
Resolution : 2.50 Å(reported)

This is a Full wwPDB X-ray Structure Validation Report for a publicly released PDB entry.
We welcome your comments at validation@mail.wwpdb.org
A user guide is available at
<http://wwpdb.org/validation/2016/XrayValidationReportHelp>
with specific help available everywhere you see the ⓘ symbol.

The following versions of software and data (see [references ⓘ](#)) were used in the production of this report:

MolProbity : 4.02b-467
Mogul : 1.7 (RC4), CSD as536be (2015)
Xtriage (Phenix) : 1.9-1692
EDS : rb-20026688
Percentile statistics : 20151230.v01 (using entries in the PDB archive December 30th 2015)
Refmac : 5.8.0135
CCP4 : 6.5.0
Ideal geometry (proteins) : Engh & Huber (2001)
Ideal geometry (DNA, RNA) : Parkinson et al. (1996)
Validation Pipeline (wwPDB-VP) : trunk26865

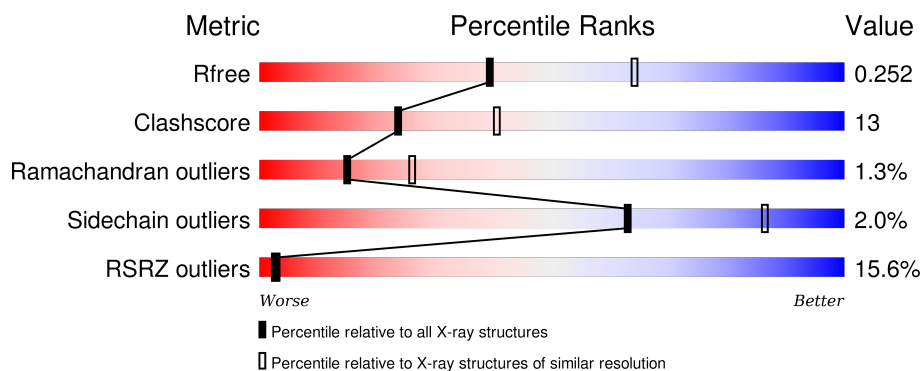
1 Overall quality at a glance

The following experimental techniques were used to determine the structure:

X-RAY DIFFRACTION

The reported resolution of this entry is 2.50 Å.

Percentile scores (ranging between 0-100) for global validation metrics of the entry are shown in the following graphic. The table shows the number of entries on which the scores are based.



Metric	Whole archive (#Entries)	Similar resolution (#Entries, resolution range(Å))
R_{free}	91344	3553 (2.50-2.50)
Clashscore	102246	4242 (2.50-2.50)
Ramachandran outliers	100387	4156 (2.50-2.50)
Sidechain outliers	100360	4158 (2.50-2.50)
RSRZ outliers	91569	3562 (2.50-2.50)

The table below summarises the geometric issues observed across the polymeric chains and their fit to the electron density. The red, orange, yellow and green segments on the lower bar indicate the fraction of residues that contain outliers for ≥ 3 , 2, 1 and 0 types of geometric quality criteria. A grey segment represents the fraction of residues that are not modelled. The numeric value for each fraction is indicated below the corresponding segment, with a dot representing fractions $\leq 5\%$. The upper red bar (where present) indicates the fraction of residues that have poor fit to the electron density. The numeric value is given above the bar.

Mol	Chain	Length	Quality of chain
1	A	179	<div> <div>40%</div> <div>68% 30% ..</div> </div>
2	L	214	<div> <div>7%</div> <div>67% 31% .</div> </div>
3	H	237	<div> <div>5%</div> <div>78% 21% .</div> </div>

2 Entry composition

There are 7 unique types of molecules in this entry. The entry contains 5002 atoms, of which 0 are hydrogens and 0 are deuteriums.

In the tables below, the ZeroOcc column contains the number of atoms modelled with zero occupancy, the AltConf column contains the number of residues with at least one atom in alternate conformation and the Trace column contains the number of residues modelled with at most 2 atoms.

- Molecule 1 is a protein called RNA polymerase sigma factor.

Mol	Chain	Residues	Atoms					ZeroOcc	AltConf	Trace
1	A	177	Total	C	N	O	S	0	0	0
			1408	898	250	259	1			

There are 14 discrepancies between the modelled and reference sequences:

Chain	Residue	Modelled	Actual	Comment	Reference
A	105	GLU	GLN	ENGINEERED	UNP Q9EZJ8
A	107	LEU	PRO	ENGINEERED	UNP Q9EZJ8
A	108	GLU	LEU	ENGINEERED	UNP Q9EZJ8
A	110	ASP	THR	ENGINEERED	UNP Q9EZJ8
A	111	LYS	LEU	ENGINEERED	UNP Q9EZJ8
A	112	TRP	GLU	ENGINEERED	UNP Q9EZJ8
A	113	ALA	GLU	ENGINEERED	UNP Q9EZJ8
A	115	LEU	ILE	ENGINEERED	UNP Q9EZJ8
A	116	GLY	ASP	ENGINEERED	UNP Q9EZJ8
A	117	ALA	LEU	ENGINEERED	UNP Q9EZJ8
A	119	ALA	ARG	ENGINEERED	UNP Q9EZJ8
A	155	ALA	ARG	ENGINEERED	UNP Q9EZJ8
A	247	GLY	ARG	ENGINEERED	UNP Q9EZJ8
A	249	ALA	LYS	ENGINEERED	UNP Q9EZJ8

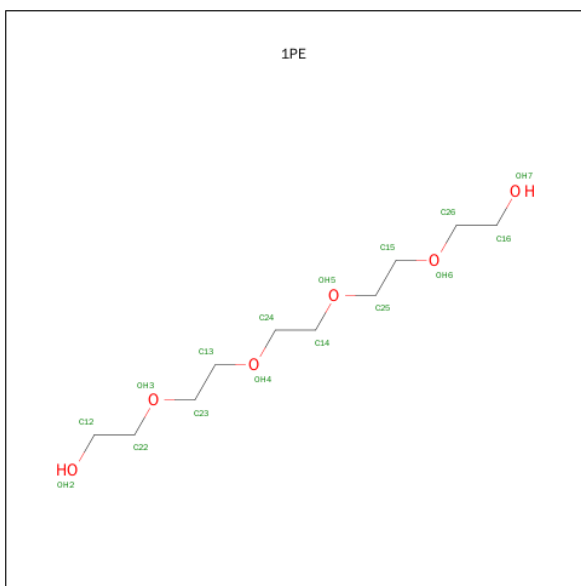
- Molecule 2 is a protein called 2F5 ANTIBODY LIGHT CHAIN.

Mol	Chain	Residues	Atoms					ZeroOcc	AltConf	Trace
2	L	214	Total	C	N	O	S	0	0	0
			1640	1023	281	331	5			

- Molecule 3 is a protein called 2F5 ANTIBODY HEAVY CHAIN.

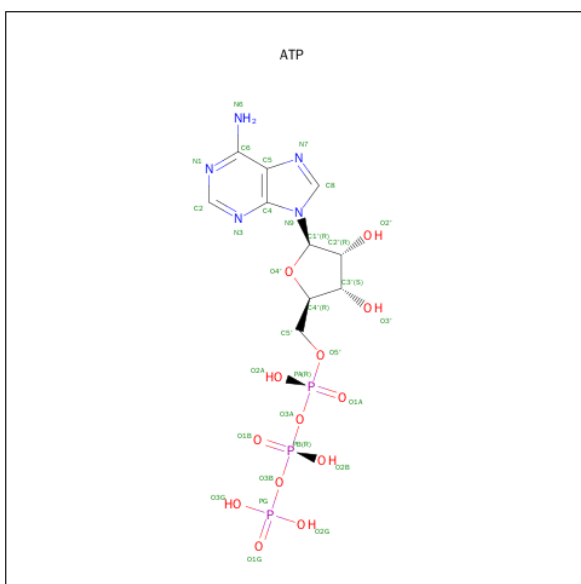
Mol	Chain	Residues	Atoms					ZeroOcc	AltConf	Trace
3	H	237	Total	C	N	O	S	0	0	0
			1773	1124	299	343	7			

- Molecule 4 is PENTAETHYLENE GLYCOL (three-letter code: 1PE) (formula: $C_{10}H_{22}O_6$).



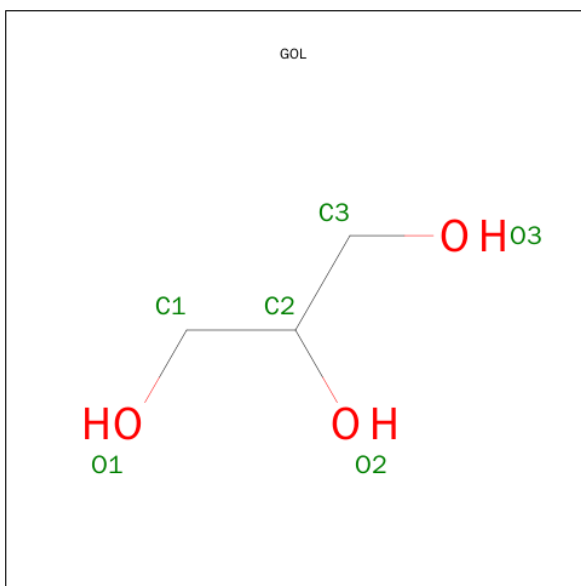
Mol	Chain	Residues	Atoms			ZeroOcc	AltConf
4	L	1	Total	C	O	0	0
			16	10	6		

- Molecule 5 is ADENOSINE-5'-TRIPHOSPHATE (three-letter code: ATP) (formula: $\text{C}_{10}\text{H}_{16}\text{N}_5\text{O}_{13}\text{P}_3$).



Mol	Chain	Residues	Atoms					ZeroOcc	AltConf
5	H	1	Total	C	N	O	P	0	1
			62	20	10	26	6		

- Molecule 6 is GLYCEROL (three-letter code: GOL) (formula: $C_3H_8O_3$).



Mol	Chain	Residues	Atoms			ZeroOcc	AltConf
6	H	1	Total	C	O	0	0
			6	3	3		

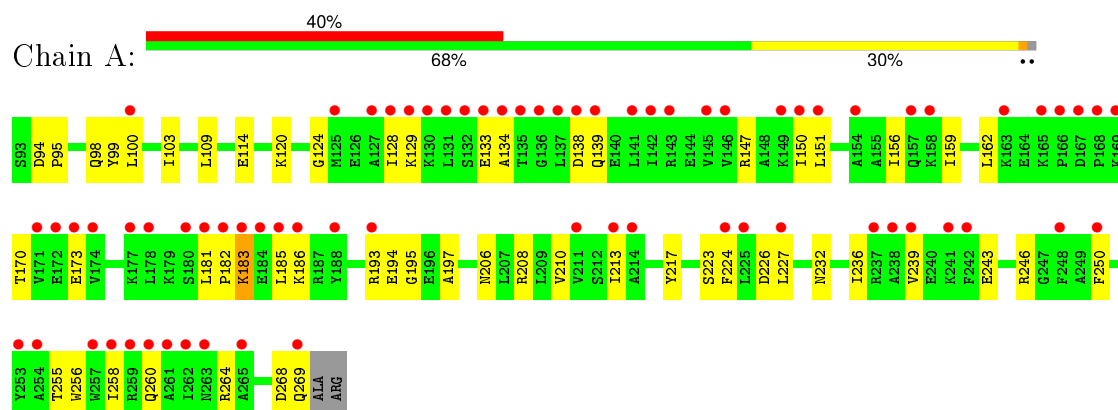
- Molecule 7 is water.

Mol	Chain	Residues	Atoms		ZeroOcc	AltConf
7	A	9	Total	O	0	0
			9	9		
7	L	28	Total	O	0	0
			28	28		
7	H	60	Total	O	0	0
			60	60		

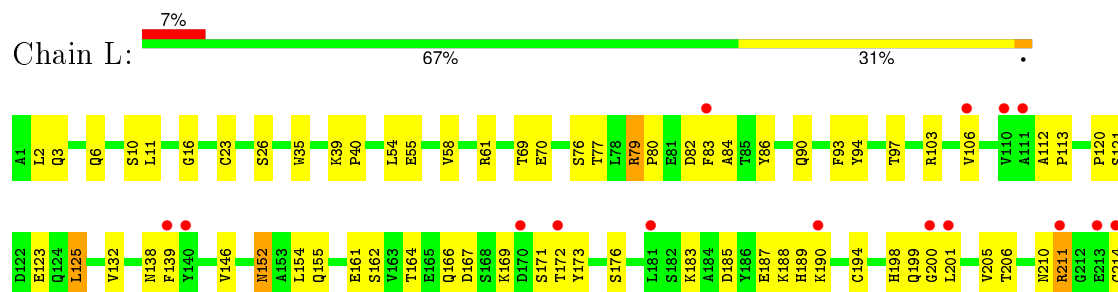
3 Residue-property plots [i](#)

These plots are drawn for all protein, RNA and DNA chains in the entry. The first graphic for a chain summarises the proportions of errors displayed in the second graphic. The second graphic shows the sequence view annotated by issues in geometry and electron density. Residues are color-coded according to the number of geometric quality criteria for which they contain at least one outlier: green = 0, yellow = 1, orange = 2 and red = 3 or more. A red dot above a residue indicates a poor fit to the electron density ($RSRZ > 2$). Stretches of 2 or more consecutive residues without any outlier are shown as a green connector. Residues present in the sample, but not in the model, are shown in grey.

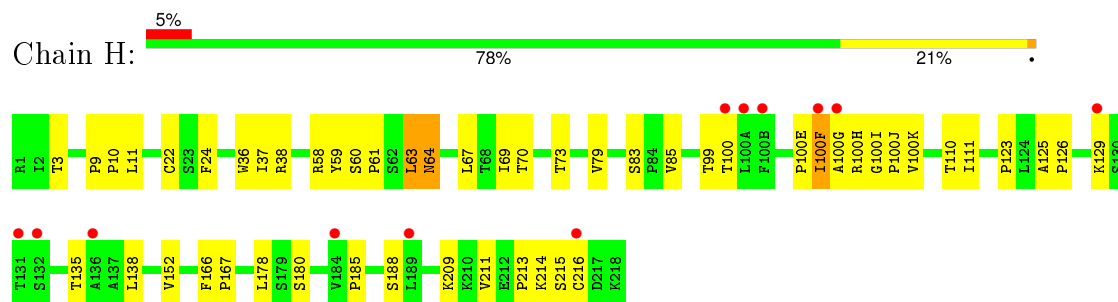
- Molecule 1: RNA polymerase sigma factor



- Molecule 2: 2F5 ANTIBODY LIGHT CHAIN



- Molecule 3: 2F5 ANTIBODY HEAVY CHAIN



4 Data and refinement statistics

Property	Value	Source
Space group	P 21 21 21	Depositor
Cell constants a, b, c, α , β , γ	58.51Å 63.93Å 200.02Å 90.00° 90.00° 90.00°	Depositor
Resolution (Å)	46.15 – 2.50 46.15 – 2.50	Depositor EDS
% Data completeness (in resolution range)	84.0 (46.15-2.50) 84.0 (46.15-2.50)	Depositor EDS
R_{merge}	(Not available)	Depositor
R_{sym}	0.09	Depositor
$\langle I/\sigma(I) \rangle$ ¹	1.25 (at 2.51Å)	Xtriage
Refinement program	PHENIX (PHENIX.REFINE)	Depositor
R, R_{free}	0.201 , 0.253 0.199 , 0.252	Depositor DCC
R_{free} test set	2329 reflections (11.51%)	DCC
Wilson B-factor (Å ²)	69.0	Xtriage
Anisotropy	0.185	Xtriage
Bulk solvent k_{sol} (e/Å ³), B_{sol} (Å ²)	0.34 , 87.0	EDS
Estimated twinning fraction	No twinning to report.	Xtriage
L-test for twinning ²	$\langle L \rangle = 0.48$, $\langle L^2 \rangle = 0.31$	Xtriage
Outliers	0 of 23617 reflections	Xtriage
F_o, F_c correlation	0.95	EDS
Total number of atoms	5002	wwPDB-VP
Average B, all atoms (Å ²)	106.0	wwPDB-VP

Xtriage's analysis on translational NCS is as follows: *The largest off-origin peak in the Patterson function is 5.05% of the height of the origin peak. No significant pseudotranslation is detected.*

¹Intensities estimated from amplitudes.

²Theoretical values of $\langle |L| \rangle$, $\langle L^2 \rangle$ for acentric reflections are 0.5, 0.375 respectively for untwinned datasets, and 0.333, 0.2 for perfectly twinned datasets.

5 Model quality

5.1 Standard geometry

Bond lengths and bond angles in the following residue types are not validated in this section: GOL, ATP, 1PE

The Z score for a bond length (or angle) is the number of standard deviations the observed value is removed from the expected value. A bond length (or angle) with $|Z| > 5$ is considered an outlier worth inspection. RMSZ is the root-mean-square of all Z scores of the bond lengths (or angles).

Mol	Chain	Bond lengths		Bond angles	
		RMSZ	# Z >5	RMSZ	# Z >5
1	A	0.27	0/1430	0.41	0/1923
2	L	0.37	0/1677	0.46	0/2279
3	H	0.33	0/1816	0.49	0/2480
All	All	0.33	0/4923	0.46	0/6682

There are no bond length outliers.

There are no bond angle outliers.

There are no chirality outliers.

There are no planarity outliers.

5.2 Too-close contacts

In the following table, the Non-H and H(model) columns list the number of non-hydrogen atoms and hydrogen atoms in the chain respectively. The H(added) column lists the number of hydrogen atoms added and optimized by MolProbity. The Clashes column lists the number of clashes within the asymmetric unit, whereas Symm-Clashes lists symmetry related clashes.

Mol	Chain	Non-H	H(model)	H(added)	Clashes	Symm-Clashes
1	A	1408	0	1457	41	0
2	L	1640	0	1587	55	0
3	H	1773	0	1794	36	0
4	L	16	0	22	2	0
5	H	62	0	24	1	0
6	H	6	0	8	0	0
7	A	9	0	0	1	0
7	H	60	0	0	1	0
7	L	28	0	0	0	0
All	All	5002	0	4892	129	0

The all-atom clashscore is defined as the number of clashes found per 1000 atoms (including hydrogen atoms). The all-atom clashscore for this structure is 13.

All (129) close contacts within the same asymmetric unit are listed below, sorted by their clash magnitude.

Atom-1	Atom-2	Interatomic distance (Å)	Clash overlap (Å)
1:A:150:ILE:HD11	1:A:193:ARG:HG3	1.27	1.08
1:A:150:ILE:HD11	1:A:193:ARG:CG	1.87	1.04
2:L:16:GLY:HA2	2:L:77:THR:HG23	1.49	0.92
2:L:79:ARG:HH11	2:L:79:ARG:HB3	1.43	0.83
3:H:126:PRO:HG3	3:H:138:LEU:HB3	1.66	0.77
2:L:3:GLN:H	2:L:26:SER:HB3	1.50	0.77
1:A:208:ARG:HD2	7:A:280:HOH:O	1.85	0.77
3:H:100:THR:HG22	3:H:100(E):PRO:HA	1.66	0.75
1:A:268:ASP:O	1:A:269:GLN:HB2	1.84	0.75
2:L:187:GLU:HA	2:L:211:ARG:HH12	1.52	0.73
2:L:40:PRO:HA	4:L:215:1PE:H222	1.70	0.73
1:A:183:LYS:H	1:A:183:LYS:HD2	1.53	0.72
2:L:39:LYS:HD2	2:L:84:ALA:HB2	1.72	0.72
2:L:190:LYS:HA	2:L:211:ARG:HG2	1.71	0.72
2:L:187:GLU:HA	2:L:211:ARG:NH1	2.05	0.71
3:H:100(H):ARG:O	3:H:100(K):VAL:HG22	1.93	0.69
3:H:126:PRO:HD2	3:H:213:PRO:HA	1.74	0.68
1:A:120:LYS:HE2	1:A:194:GLU:HB3	1.78	0.65
3:H:123:PRO:HG3	3:H:209:LYS:HE2	1.78	0.64
1:A:147:ARG:O	1:A:151:LEU:HB2	1.96	0.64
1:A:182:PRO:HD2	1:A:185:LEU:HD22	1.80	0.64
2:L:167:ASP:O	2:L:171:SER:HA	1.99	0.63
2:L:106:VAL:HG22	2:L:166:GLN:NE2	2.14	0.62
1:A:109:LEU:HB2	1:A:114:GLU:HG3	1.83	0.61
2:L:69:THR:HG22	2:L:70:GLU:HG2	1.84	0.60
2:L:189:HIS:O	2:L:211:ARG:HD3	2.01	0.59
2:L:83:PHE:CD2	2:L:106:VAL:HG12	2.39	0.58
3:H:63:LEU:HA	7:H:265:HOH:O	2.03	0.58
2:L:125:LEU:O	2:L:183:LYS:HD3	2.04	0.58
1:A:128:ILE:HG22	1:A:139:GLN:HB3	1.86	0.57
1:A:243:GLU:CD	1:A:246:ARG:HG3	2.24	0.57
1:A:213:ILE:HD11	1:A:255:THR:HG23	1.85	0.57
1:A:268:ASP:O	1:A:269:GLN:CB	2.52	0.57
1:A:129:LYS:O	1:A:133:GLU:HG2	2.04	0.57
2:L:79:ARG:NH1	2:L:79:ARG:HB3	2.18	0.56
1:A:95:PRO:HA	1:A:98:GLN:HB2	1.87	0.56
3:H:59:TYR:HB2	3:H:64:ASN:HB2	1.87	0.56

Continued on next page...

Continued from previous page...

Atom-1	Atom-2	Interatomic distance (Å)	Clash overlap (Å)
1:A:150:ILE:HD11	1:A:193:ARG:HG2	1.80	0.56
2:L:121:SER:OG	3:H:123:PRO:HD2	2.06	0.55
1:A:186:LYS:O	1:A:186:LYS:HD3	2.06	0.55
3:H:100(F):ILE:HG13	3:H:100(G):ALA:H	1.73	0.54
1:A:150:ILE:CD1	1:A:193:ARG:HG3	2.19	0.54
1:A:151:LEU:HD23	1:A:151:LEU:O	2.09	0.53
1:A:159:ILE:HB	1:A:162:LEU:HD12	1.91	0.53
1:A:260:GLN:O	1:A:264:ARG:HG2	2.09	0.53
1:A:156:ILE:O	1:A:159:ILE:HD11	2.09	0.53
2:L:166:GLN:HB2	2:L:173:TYR:CE1	2.44	0.52
3:H:100:THR:HG22	3:H:100(E):PRO:CA	2.37	0.52
3:H:99:THR:HB	3:H:100(G):ALA:HB3	1.91	0.52
1:A:206:ASN:OD1	1:A:250:PHE:HE2	1.91	0.52
1:A:210:VAL:HG22	1:A:258:ILE:HD13	1.92	0.52
1:A:128:ILE:CG2	1:A:139:GLN:HB3	2.40	0.52
1:A:124:GLY:HA3	1:A:195:GLY:HA3	1.90	0.52
2:L:121:SER:HB3	2:L:123:GLU:OE2	2.10	0.51
2:L:139:PHE:O	2:L:172:THR:HB	2.11	0.51
1:A:150:ILE:HD13	1:A:193:ARG:HE	1.76	0.51
2:L:80:PRO:O	2:L:83:PHE:HD1	1.95	0.50
3:H:214:LYS:C	3:H:216:CYS:H	2.15	0.50
1:A:150:ILE:HG21	1:A:197:ALA:HA	1.93	0.50
2:L:121:SER:O	2:L:125:LEU:HD22	2.12	0.49
2:L:94:TYR:CE2	3:H:58:ARG:HG3	2.46	0.49
2:L:185:ASP:HA	2:L:188:LYS:HE2	1.93	0.49
1:A:159:ILE:HD12	1:A:159:ILE:N	2.28	0.49
2:L:80:PRO:HA	2:L:83:PHE:HE1	1.76	0.49
2:L:201:LEU:HD13	2:L:205:VAL:HG23	1.95	0.49
2:L:198:HIS:CD2	2:L:200:GLY:H	2.31	0.48
1:A:99:TYR:CE2	1:A:103:ILE:HD13	2.48	0.48
3:H:61:PRO:O	5:H:219[A]:ATP:N6	2.47	0.47
3:H:64:ASN:ND2	3:H:64:ASN:C	2.67	0.47
2:L:164:THR:HG23	3:H:166:PHE:CD2	2.50	0.47
2:L:199:GLN:C	2:L:201:LEU:H	2.18	0.47
3:H:100(F):ILE:HG13	3:H:100(G):ALA:N	2.29	0.47
2:L:54:LEU:HD11	2:L:58:VAL:HG12	1.96	0.47
2:L:2:LEU:HD13	2:L:93:PHE:HD1	1.78	0.47
1:A:162:LEU:HD21	1:A:236:ILE:HG13	1.97	0.47
2:L:79:ARG:HB3	2:L:80:PRO:HD2	1.97	0.47
2:L:152:ASN:O	2:L:152:ASN:ND2	2.49	0.46
2:L:23:CYS:HB2	2:L:35:TRP:CH2	2.50	0.46

Continued on next page...

Continued from previous page...

Atom-1	Atom-2	Interatomic distance (Å)	Clash overlap (Å)
3:H:135:THR:HG22	3:H:185:PRO:HA	1.98	0.46
2:L:167:ASP:OD1	2:L:169:LYS:HB2	2.15	0.46
2:L:211:ARG:HA	2:L:214:CYS:OXT	2.16	0.46
3:H:138:LEU:HD12	3:H:211:VAL:HB	1.97	0.45
3:H:60:SER:HB3	3:H:63:LEU:HD11	1.98	0.45
1:A:99:TYR:HD2	1:A:100:LEU:HD23	1.81	0.45
3:H:178:LEU:HD12	3:H:178:LEU:C	2.36	0.45
1:A:94:ASP:OD1	1:A:95:PRO:HD2	2.17	0.45
1:A:217:TYR:HB2	1:A:227:LEU:HD13	1.99	0.45
2:L:161:GLU:HA	2:L:176:SER:O	2.16	0.45
2:L:79:ARG:HH11	2:L:80:PRO:HD2	1.82	0.45
2:L:113:PRO:HD3	2:L:198:HIS:HD2	1.82	0.45
3:H:83:SER:OG	3:H:85:VAL:HG12	2.17	0.45
1:A:232:ASN:O	1:A:236:ILE:HG12	2.17	0.45
2:L:90:GLN:HE21	2:L:97:THR:HG23	1.82	0.45
3:H:100(I):GLY:N	3:H:100(J):PRO:CD	2.79	0.44
3:H:111:ILE:N	3:H:111:ILE:HD12	2.32	0.44
2:L:154:LEU:HD12	2:L:155:GLN:H	1.83	0.44
3:H:125:ALA:HA	3:H:126:PRO:HD3	1.83	0.44
2:L:194:CYS:O	2:L:206:THR:HA	2.18	0.44
1:A:236:ILE:HA	1:A:239:VAL:HG12	1.99	0.44
3:H:9:PRO:HA	3:H:10:PRO:HD3	1.85	0.44
1:A:124:GLY:O	1:A:128:ILE:HG13	2.18	0.43
2:L:80:PRO:O	2:L:83:PHE:CD1	2.71	0.43
2:L:79:ARG:NH1	2:L:80:PRO:HD2	2.33	0.43
3:H:59:TYR:CE2	3:H:69:ILE:HG22	2.53	0.43
1:A:170:THR:HA	1:A:173:GLU:HB3	1.99	0.43
2:L:162:SER:OG	3:H:167:PRO:HD2	2.19	0.43
2:L:112:ALA:HA	2:L:113:PRO:HD3	1.79	0.43
2:L:79:ARG:HB3	2:L:80:PRO:CD	2.49	0.43
3:H:37:ILE:HD12	3:H:37:ILE:N	2.33	0.43
2:L:146:VAL:HG13	2:L:194:CYS:SG	2.58	0.43
4:L:215:1PE:H251	4:L:215:1PE:H261	1.83	0.42
1:A:181:LEU:HB3	1:A:182:PRO:HD2	2.01	0.42
2:L:183:LYS:O	2:L:187:GLU:HG3	2.20	0.42
1:A:223:SER:O	1:A:226:ASP:HB2	2.19	0.42
3:H:63:LEU:HD13	3:H:67:LEU:CD1	2.49	0.42
3:H:152:VAL:HG11	3:H:180:SER:CB	2.49	0.42
2:L:10:SER:HA	2:L:103:ARG:O	2.20	0.42
2:L:120:PRO:HD3	2:L:132:VAL:HG22	2.01	0.42
3:H:11:LEU:HA	3:H:110:THR:O	2.20	0.42

Continued on next page...

Continued from previous page...

Atom-1	Atom-2	Interatomic distance (Å)	Clash overlap (Å)
3:H:22:CYS:HB2	3:H:36:TRP:CZ2	2.55	0.42
2:L:55:GLU:O	2:L:58:VAL:HB	2.20	0.41
2:L:6:GLN:NE2	2:L:86:TYR:O	2.53	0.41
2:L:120:PRO:HB2	2:L:125:LEU:HD22	2.02	0.41
1:A:138:ASP:OD2	1:A:139:GLN:HG3	2.21	0.41
2:L:120:PRO:HB2	2:L:125:LEU:CD2	2.51	0.41
3:H:3:THR:O	3:H:24:PHE:HA	2.21	0.41
3:H:129:LYS:HD3	3:H:129:LYS:HA	1.90	0.40
3:H:70:THR:HG22	3:H:79:VAL:HB	2.04	0.40
2:L:61:ARG:HH21	2:L:82:ASP:CG	2.24	0.40

There are no symmetry-related clashes.

5.3 Torsion angles [i](#)

5.3.1 Protein backbone [i](#)

In the following table, the Percentiles column shows the percent Ramachandran outliers of the chain as a percentile score with respect to all X-ray entries followed by that with respect to entries of similar resolution.

The Analysed column shows the number of residues for which the backbone conformation was analysed, and the total number of residues.

Mol	Chain	Analysed	Favoured	Allowed	Outliers	Percentiles	
1	A	175/179 (98%)	153 (87%)	20 (11%)	2 (1%)	17	31
2	L	212/214 (99%)	189 (89%)	20 (9%)	3 (1%)	14	24
3	H	235/237 (99%)	213 (91%)	19 (8%)	3 (1%)	15	26
All	All	622/630 (99%)	555 (89%)	59 (10%)	8 (1%)	15	26

All (8) Ramachandran outliers are listed below:

Mol	Chain	Res	Type
3	H	188	SER
1	A	134	ALA
2	L	76	SER
2	L	138	ASN
3	H	215	SER
1	A	224	PHE
2	L	211	ARG

Continued on next page...

Continued from previous page...

Mol	Chain	Res	Type
3	H	100(F)	ILE

5.3.2 Protein sidechains ⓘ

In the following table, the Percentiles column shows the percent sidechain outliers of the chain as a percentile score with respect to all X-ray entries followed by that with respect to entries of similar resolution.

The Analysed column shows the number of residues for which the sidechain conformation was analysed, and the total number of residues.

Mol	Chain	Analysed	Rotameric	Outliers	Percentiles	
1	A	144/145 (99%)	142 (99%)	2 (1%)	74	91
2	L	186/186 (100%)	181 (97%)	5 (3%)	52	79
3	H	207/207 (100%)	203 (98%)	4 (2%)	65	87
All	All	537/538 (100%)	526 (98%)	11 (2%)	63	86

All (11) residues with a non-rotameric sidechain are listed below:

Mol	Chain	Res	Type
1	A	183	LYS
1	A	256	TRP
2	L	11	LEU
2	L	79	ARG
2	L	125	LEU
2	L	152	ASN
2	L	210	ASN
3	H	38	ARG
3	H	63	LEU
3	H	64	ASN
3	H	73	THR

Some sidechains can be flipped to improve hydrogen bonding and reduce clashes. All (1) such sidechains are listed below:

Mol	Chain	Res	Type
2	L	92	HIS

5.3.3 RNA ⓘ

There are no RNA molecules in this entry.

5.4 Non-standard residues in protein, DNA, RNA chains ⓘ

There are no non-standard protein/DNA/RNA residues in this entry.

5.5 Carbohydrates ⓘ

There are no carbohydrates in this entry.

5.6 Ligand geometry ⓘ

4 ligands are modelled in this entry.

In the following table, the Counts columns list the number of bonds (or angles) for which Mogul statistics could be retrieved, the number of bonds (or angles) that are observed in the model and the number of bonds (or angles) that are defined in the chemical component dictionary. The Link column lists molecule types, if any, to which the group is linked. The Z score for a bond length (or angle) is the number of standard deviations the observed value is removed from the expected value. A bond length (or angle) with $|Z| > 2$ is considered an outlier worth inspection. RMSZ is the root-mean-square of all Z scores of the bond lengths (or angles).

Mol	Type	Chain	Res	Link	Bond lengths			Bond angles		
					Counts	RMSZ	$\# Z > 2$	Counts	RMSZ	$\# Z > 2$
5	ATP	H	219[A]	-	24,33,33	0.99	1 (4%)	31,52,52	1.98	6 (19%)
5	ATP	H	219[B]	-	24,33,33	1.15	2 (8%)	31,52,52	1.37	5 (16%)
6	GOL	H	220	-	5,5,5	0.33	0	5,5,5	0.17	0
4	1PE	L	215	-	15,15,15	0.56	0	14,14,14	0.81	0

In the following table, the Chirals column lists the number of chiral outliers, the number of chiral centers analysed, the number of these observed in the model and the number defined in the chemical component dictionary. Similar counts are reported in the Torsion and Rings columns. '-' means no outliers of that kind were identified.

Mol	Type	Chain	Res	Link	Chirals	Torsions	Rings
5	ATP	H	219[A]	-	-	0/18/38/38	0/3/3/3
5	ATP	H	219[B]	-	-	0/18/38/38	0/3/3/3
6	GOL	H	220	-	-	0/4/4/4	0/0/0/0
4	1PE	L	215	-	-	0/13/13/13	0/0/0/0

All (3) bond length outliers are listed below:

Mol	Chain	Res	Type	Atoms	Z	Observed(Å)	Ideal(Å)
5	H	219[B]	ATP	PG-O3G	-2.06	1.47	1.54
5	H	219[B]	ATP	C2-N1	2.60	1.38	1.33
5	H	219[A]	ATP	C5-C4	3.14	1.47	1.40

All (11) bond angle outliers are listed below:

Mol	Chain	Res	Type	Atoms	Z	Observed(°)	Ideal(°)
5	H	219[A]	ATP	N3-C2-N1	-6.96	123.56	128.89
5	H	219[A]	ATP	PA-O3A-PB	-4.02	121.45	132.73
5	H	219[A]	ATP	PB-O3B-PG	-3.42	121.21	132.67
5	H	219[B]	ATP	C2'-C1'-N9	-3.13	109.51	114.29
5	H	219[A]	ATP	C4'-O4'-C1'	-2.94	106.49	109.72
5	H	219[A]	ATP	C4-C5-N7	-2.72	106.98	109.48
5	H	219[A]	ATP	C2'-C1'-N9	-2.62	110.28	114.29
5	H	219[B]	ATP	O3'-C3'-C2'	-2.05	105.16	111.83
5	H	219[B]	ATP	O3A-PA-O5'	2.10	108.51	102.94
5	H	219[B]	ATP	O4'-C1'-N9	2.28	112.86	108.10
5	H	219[B]	ATP	N3-C2-N1	2.46	130.78	128.89

There are no chirality outliers.

There are no torsion outliers.

There are no ring outliers.

2 monomers are involved in 3 short contacts:

Mol	Chain	Res	Type	Clashes	Symm-Clashes
5	H	219[A]	ATP	1	0
4	L	215	1PE	2	0

5.7 Other polymers [i](#)

There are no such residues in this entry.

5.8 Polymer linkage issues [i](#)

There are no chain breaks in this entry.

6 Fit of model and data

6.1 Protein, DNA and RNA chains

In the following table, the column labelled ‘#RSRZ> 2’ contains the number (and percentage) of RSRZ outliers, followed by percent RSRZ outliers for the chain as percentile scores relative to all X-ray entries and entries of similar resolution. The OWAB column contains the minimum, median, 95th percentile and maximum values of the occupancy-weighted average B-factor per residue. The column labelled ‘Q< 0.9’ lists the number of (and percentage) of residues with an average occupancy less than 0.9.

Mol	Chain	Analysed	<RSRZ>	#RSRZ>2	OWAB(Å ²)	Q<0.9
1	A	177/179 (98%)	2.22	71 (40%) 0 0	60, 148, 226, 247	0
2	L	214/214 (100%)	0.57	15 (7%) 19 22	49, 89, 129, 176	0
3	H	237/237 (100%)	0.43	12 (5%) 32 36	48, 74, 138, 179	0
All	All	628/630 (99%)	0.98	98 (15%) 3 2	48, 95, 200, 247	0

All (98) RSRZ outliers are listed below:

Mol	Chain	Res	Type	RSRZ
1	A	131	LEU	13.3
1	A	185	LEU	11.2
2	L	214	CYS	9.5
1	A	135	THR	9.4
1	A	183	LYS	9.1
1	A	132	SER	8.8
1	A	269	GLN	8.1
1	A	178	LEU	8.0
1	A	130	LYS	7.8
1	A	128	ILE	7.3
2	L	213	GLU	7.1
1	A	180	SER	7.1
1	A	181	LEU	6.9
1	A	137	LEU	6.8
1	A	182	PRO	6.6
1	A	141	LEU	6.3
1	A	172	GLU	6.2
3	H	216	CYS	6.2
1	A	173	GLU	6.0
1	A	166	PRO	6.0
1	A	224	PHE	5.7
1	A	171	VAL	5.6
1	A	265	ALA	5.6

Continued on next page...

Continued from previous page...

Mol	Chain	Res	Type	RSRZ
3	H	100(A)	LEU	5.5
1	A	237	ARG	5.0
1	A	127	ALA	4.9
1	A	129	LYS	4.8
1	A	100	LEU	4.6
1	A	257	TRP	4.6
1	A	258	ILE	4.6
1	A	138	ASP	4.4
1	A	142	ILE	4.2
1	A	133	GLU	4.2
1	A	157	GLN	4.1
1	A	262	ILE	4.0
3	H	131	THR	4.0
1	A	214	ALA	3.9
1	A	169	LYS	3.9
1	A	145	VAL	3.8
2	L	139	PHE	3.7
1	A	263	ASN	3.7
1	A	139	GLN	3.6
3	H	132	SER	3.6
1	A	146	VAL	3.5
1	A	167	ASP	3.5
1	A	184	GLU	3.4
1	A	227	LEU	3.4
2	L	201	LEU	3.3
1	A	165	LYS	3.3
1	A	213	ILE	3.3
3	H	136	ALA	3.2
3	H	189	LEU	3.2
1	A	260	GLN	3.2
2	L	140	TYR	3.1
1	A	136	GLY	3.1
1	A	149	LYS	3.1
1	A	177	LYS	3.1
2	L	170	ASP	3.0
1	A	150	ILE	3.0
1	A	211	VAL	3.0
1	A	154	ALA	3.0
1	A	158	LYS	3.0
1	A	188	TYR	2.9
1	A	174	VAL	2.9
1	A	125	MET	2.8

Continued on next page...

Continued from previous page...

Mol	Chain	Res	Type	RSRZ
3	H	100(B)	PHE	2.8
1	A	168	PRO	2.8
1	A	239	VAL	2.8
2	L	110	VAL	2.7
2	L	106	VAL	2.6
1	A	151	LEU	2.6
1	A	186	LYS	2.6
2	L	111	ALA	2.6
1	A	143	ARG	2.5
3	H	184	VAL	2.5
1	A	253	TYR	2.5
3	H	100(G)	ALA	2.5
2	L	83	PHE	2.4
1	A	134	ALA	2.4
1	A	242	PHE	2.4
2	L	181	LEU	2.4
1	A	241	LYS	2.3
2	L	200	GLY	2.3
1	A	254	ALA	2.3
1	A	225	LEU	2.3
1	A	250	PHE	2.3
3	H	100(F)	ILE	2.2
1	A	248	PHE	2.2
2	L	211	ARG	2.2
1	A	259	ARG	2.2
2	L	190	LYS	2.2
2	L	172	THR	2.1
3	H	129	LYS	2.1
1	A	193	ARG	2.1
1	A	163	LYS	2.1
1	A	238	ALA	2.0
1	A	261	ALA	2.0
3	H	100	THR	2.0

6.2 Non-standard residues in protein, DNA, RNA chains [i](#)

There are no non-standard protein/DNA/RNA residues in this entry.

6.3 Carbohydrates [i](#)

There are no carbohydrates in this entry.

6.4 Ligands

In the following table, the Atoms column lists the number of modelled atoms in the group and the number defined in the chemical component dictionary. LLDF column lists the quality of electron density of the group with respect to its neighbouring residues in protein, DNA or RNA chains. The B-factors column lists the minimum, median, 95th percentile and maximum values of B factors of atoms in the group. The column labelled 'Q< 0.9' lists the number of atoms with occupancy less than 0.9.

Mol	Type	Chain	Res	Atoms	RSCC	RSR	LLDF	B-factors(Å ²)	Q<0.9
4	1PE	L	215	16/16	0.84	0.16	0.51	81,109,120,122	0
5	ATP	H	219[A]	31/31	0.72	0.25	-0.13	118,147,218,221	31
5	ATP	H	219[B]	31/31	0.72	0.25	-0.25	128,149,218,220	31
6	GOL	H	220	6/6	0.87	0.30	-	112,116,125,128	0

6.5 Other polymers

There are no such residues in this entry.