



Full wwPDB X-ray Structure Validation Report ⓘ

Jan 31, 2016 – 08:40 PM GMT

PDB ID : 1LIJ
Title : STRUCTURE OF T. GONDII ADENOSINE KINASE BOUND TO PRO-
DRUG 2 7-IODOTUBERCIDIN AND AMP-PCP
Authors : Schumacher, M.A.; Scott, D.M.; Mathews, I.I.; Ealick, S.E.; Roos, D.S.; Ull-
man, B.; Brennan, R.G.
Deposited on : 2002-04-17
Resolution : 1.86 Å(reported)

This is a Full wwPDB X-ray Structure Validation Report for a publicly released PDB entry.
We welcome your comments at validation@mail.wwpdb.org
A user guide is available at
<http://wwpdb.org/validation/2016/XrayValidationReportHelp>
with specific help available everywhere you see the ⓘ symbol.

The following versions of software and data (see [references ⓘ](#)) were used in the production of this report:

MolProbity : 4.02b-467
Mogul : 1.7 (RC4), CSD as536be (2015)
Xtriage (Phenix) : **NOT EXECUTED**
EDS : **NOT EXECUTED**
Percentile statistics : 20151230.v01 (using entries in the PDB archive December 30th 2015)
Ideal geometry (proteins) : Engh & Huber (2001)
Ideal geometry (DNA, RNA) : Parkinson et al. (1996)
Validation Pipeline (wwPDB-VP) : trunk26865

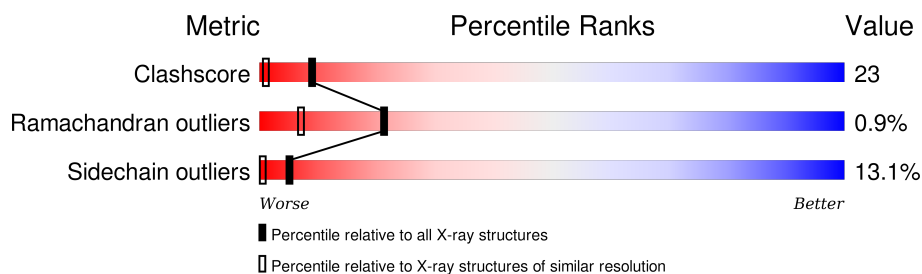
1 Overall quality at a glance

The following experimental techniques were used to determine the structure:

X-RAY DIFFRACTION

The reported resolution of this entry is 1.86 Å.

Percentile scores (ranging between 0-100) for global validation metrics of the entry are shown in the following graphic. The table shows the number of entries on which the scores are based.



Metric	Whole archive (#Entries)	Similar resolution (#Entries, resolution range(Å))
Clashscore	102246	1898 (1.86-1.86)
Ramachandran outliers	100387	1875 (1.86-1.86)
Sidechain outliers	100360	1875 (1.86-1.86)

The table below summarises the geometric issues observed across the polymeric chains and their fit to the electron density. The red, orange, yellow and green segments on the lower bar indicate the fraction of residues that contain outliers for ≥ 3 , 2, 1 and 0 types of geometric quality criteria. A grey segment represents the fraction of residues that are not modelled. The numeric value for each fraction is indicated below the corresponding segment, with a dot representing fractions $\leq 5\%$. The upper red bar (where present) indicates the fraction of residues that have poor fit to the electron density. The numeric value is given above the bar.

Note EDS was not executed.

Mol	Chain	Length	Quality of chain
1	A	363	

The following table lists non-polymeric compounds, carbohydrate monomers and non-standard residues in protein, DNA, RNA chains that are outliers for geometric or electron-density-fit criteria:

Mol	Type	Chain	Res	Chirality	Geometry	Clashes	Electron density
4	RPP	A	699	X	-	-	-

2 Entry composition

There are 6 unique types of molecules in this entry. The entry contains 2631 atoms, of which 0 are hydrogens and 0 are deuteriums.

In the tables below, the ZeroOcc column contains the number of atoms modelled with zero occupancy, the AltConf column contains the number of residues with at least one atom in alternate conformation and the Trace column contains the number of residues modelled with at most 2 atoms.

- Molecule 1 is a protein called adenosine kinase.

Mol	Chain	Residues	Atoms					ZeroOcc	AltConf	Trace
1	A	330	Total	C	N	O	S	0	0	0
			2433	1546	415	457	15			

There are 6 discrepancies between the modelled and reference sequences:

Chain	Residue	Modelled	Actual	Comment	Reference
A	126	THR	VAL	CONFLICT	UNP Q9TVW2
A	150	ILE	LEU	CONFLICT	UNP Q9TVW2
A	153	ASN	ASP	CONFLICT	UNP Q9TVW2
A	242	VAL	THR	CONFLICT	UNP Q9TVW2
A	246	VAL	THR	CONFLICT	UNP Q9TVW2
A	327	GLY	ALA	CONFLICT	UNP Q9TVW2

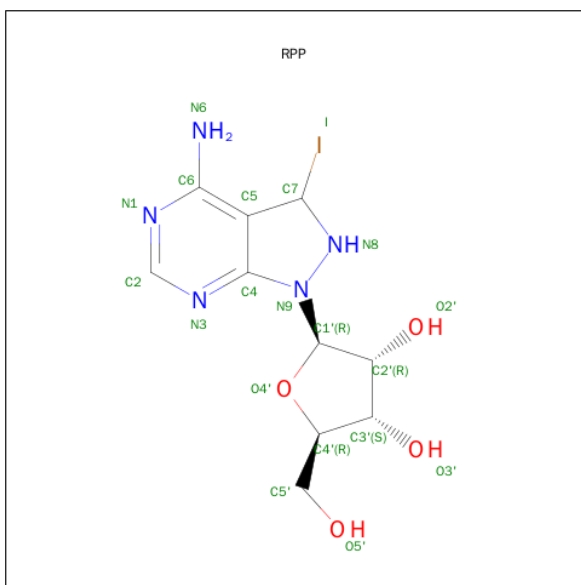
- Molecule 2 is CHLORIDE ION (three-letter code: CL) (formula: Cl).

Mol	Chain	Residues	Atoms		ZeroOcc	AltConf
2	A	1	Total	Cl	0	0
			1	1		

- Molecule 3 is MAGNESIUM ION (three-letter code: MG) (formula: Mg).

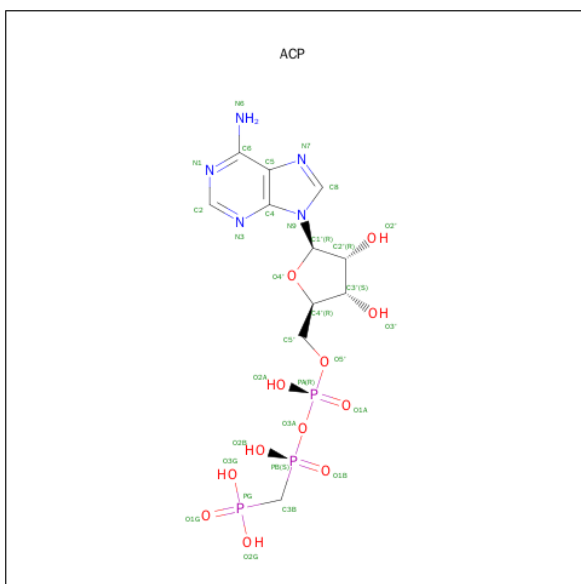
Mol	Chain	Residues	Atoms		ZeroOcc	AltConf
3	A	1	Total	Mg	0	0
			1	1		

- Molecule 4 is 2-RIBOFURANOSYL-3-iodo-2,3-dihydro-1H-pyrazolo[3,4-d]pyrimidin-4-ylamine (three-letter code: RPP) (formula: C₁₀H₁₄IN₅O₄).



Mol	Chain	Residues	Atoms					ZeroOcc	AltConf
4	A	1	Total	C	I	N	O	0	0
			20	10	1	5	4		

- Molecule 5 is PHOSPHOMETHYLPHOSPHONIC ACID ADENYLATE ESTER (three-letter code: ACP) (formula: $C_{11}H_{18}N_5O_{12}P_3$).



Mol	Chain	Residues	Atoms					ZeroOcc	AltConf
5	A	1	Total	C	N	O	P	0	0
			31	11	5	12	3		

- Molecule 6 is water.

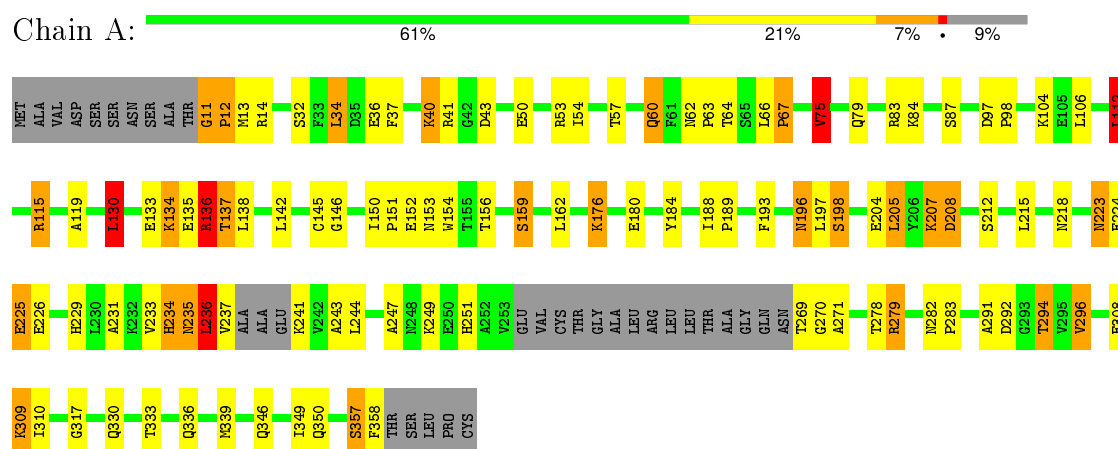
Mol	Chain	Residues	Atoms		ZeroOcc	AltConf
6	A	145	Total 145	O 145	0	0

3 Residue-property plots

These plots are drawn for all protein, RNA and DNA chains in the entry. The first graphic for a chain summarises the proportions of errors displayed in the second graphic. The second graphic shows the sequence view annotated by issues in geometry and electron density. Residues are color-coded according to the number of geometric quality criteria for which they contain at least one outlier: green = 0, yellow = 1, orange = 2 and red = 3 or more. A red dot above a residue indicates a poor fit to the electron density ($RSRZ > 2$). Stretches of 2 or more consecutive residues without any outlier are shown as a green connector. Residues present in the sample, but not in the model, are shown in grey.

Note EDS was not executed.

- Molecule 1: adenosine kinase



4 Data and refinement statistics

Xtriage (Phenix) and EDS were not executed - this section will therefore be incomplete.

Property	Value	Source
Space group	P 21 21 2	Depositor
Cell constants a, b, c, α , β , γ	167.70 Å 46.97 Å 44.09 Å 90.00° 90.00° 90.00°	Depositor
Resolution (Å)	10.00 – 1.86	Depositor
% Data completeness (in resolution range)	99.0 (10.00-1.86)	Depositor
R_{merge}	0.09	Depositor
R_{sym}	(Not available)	Depositor
Refinement program	TNT	Depositor
R, R_{free}	0.185 , 0.239	Depositor
Estimated twinning fraction	No twinning to report.	Xtriage
Total number of atoms	2631	wwPDB-VP
Average B, all atoms (Å ²)	30.0	wwPDB-VP

5 Model quality

5.1 Standard geometry

Bond lengths and bond angles in the following residue types are not validated in this section: RPP, MG, ACP, CL

The Z score for a bond length (or angle) is the number of standard deviations the observed value is removed from the expected value. A bond length (or angle) with $|Z| > 5$ is considered an outlier worth inspection. RMSZ is the root-mean-square of all Z scores of the bond lengths (or angles).

Mol	Chain	Bond lengths		Bond angles	
		RMSZ	$\# Z > 5$	RMSZ	$\# Z > 5$
1	A	0.70	2/2479 (0.1%)	1.15	18/3369 (0.5%)

Chiral center outliers are detected by calculating the chiral volume of a chiral center and verifying if the center is modelled as a planar moiety or with the opposite hand. A planarity outlier is detected by checking planarity of atoms in a peptide group, atoms in a mainchain group or atoms of a sidechain that are expected to be planar.

Mol	Chain	#Chirality outliers	#Planarity outliers
1	A	1	0

All (2) bond length outliers are listed below:

Mol	Chain	Res	Type	Atoms	Z	Observed(Å)	Ideal(Å)
1	A	137	THR	C-N	-10.99	1.08	1.34
1	A	224	GLU	CD-OE2	-5.53	1.19	1.25

All (18) bond angle outliers are listed below:

Mol	Chain	Res	Type	Atoms	Z	Observed(°)	Ideal(°)
1	A	137	THR	O-C-N	-7.95	109.98	122.70
1	A	136	ARG	O-C-N	-7.55	110.62	122.70
1	A	11	GLY	C-N-CD	-7.13	104.92	120.60
1	A	249	LYS	CB-CA-C	6.73	123.85	110.40
1	A	130	LEU	CB-CA-C	6.67	122.88	110.20
1	A	75	VAL	CG1-CB-CG2	6.63	121.51	110.90
1	A	234	HIS	CB-CA-C	6.10	122.60	110.40
1	A	137	THR	CA-C-N	5.86	130.09	117.20
1	A	137	THR	C-N-CA	5.74	136.04	121.70
1	A	130	LEU	CB-CG-CD2	-5.58	101.52	111.00
1	A	296	VAL	CG1-CB-CG2	5.54	119.76	110.90

Continued on next page...

Continued from previous page...

Mol	Chain	Res	Type	Atoms	Z	Observed(°)	Ideal(°)
1	A	308	GLU	N-CA-CB	5.53	120.55	110.60
1	A	43	ASP	CB-CA-C	-5.48	99.45	110.40
1	A	112	LEU	CA-CB-CG	5.47	127.89	115.30
1	A	251	HIS	CB-CA-C	-5.45	99.49	110.40
1	A	241	LYS	N-CA-CB	5.08	119.75	110.60
1	A	243	ALA	CB-CA-C	5.05	117.67	110.10
1	A	205	LEU	CB-CA-C	-5.00	100.69	110.20

All (1) chirality outliers are listed below:

Mol	Chain	Res	Type	Atom
1	A	241	LYS	CA

There are no planarity outliers.

5.2 Too-close contacts ⓘ

In the following table, the Non-H and H(model) columns list the number of non-hydrogen atoms and hydrogen atoms in the chain respectively. The H(added) column lists the number of hydrogen atoms added and optimized by MolProbity. The Clashes column lists the number of clashes within the asymmetric unit, whereas Symm-Clashes lists symmetry related clashes.

Mol	Chain	Non-H	H(model)	H(added)	Clashes	Symm-Clashes
1	A	2433	0	2400	113	0
2	A	1	0	0	0	0
3	A	1	0	0	0	0
4	A	20	0	13	0	0
5	A	31	0	14	4	0
6	A	145	0	0	17	0
All	All	2631	0	2427	114	0

The all-atom clashscore is defined as the number of clashes found per 1000 atoms (including hydrogen atoms). The all-atom clashscore for this structure is 23.

All (114) close contacts within the same asymmetric unit are listed below, sorted by their clash magnitude.

Atom-1	Atom-2	Interatomic distance (Å)	Clash overlap (Å)
1:A:333:THR:H	1:A:336:GLN:NE2	1.44	1.12
1:A:310:ILE:HD12	1:A:349:ILE:HD12	1.35	1.04
1:A:193:PHE:H	1:A:218:ASN:HD22	1.17	0.92

Continued on next page...

Continued from previous page...

Atom-1	Atom-2	Interatomic distance (Å)	Clash overlap (Å)
1:A:333:THR:N	1:A:336:GLN:HE21	1.66	0.91
1:A:196:ASN:HD22	1:A:198:SER:H	1.20	0.87
1:A:137:THR:HB	6:A:1132:HOH:O	1.79	0.82
1:A:333:THR:H	1:A:336:GLN:HE21	0.84	0.81
1:A:231:ALA:HA	1:A:236:LEU:CD1	2.11	0.81
1:A:333:THR:HG23	1:A:336:GLN:NE2	1.96	0.78
1:A:119:ALA:HB1	6:A:1121:HOH:O	1.83	0.78
1:A:223:ASN:ND2	1:A:226:GLU:H	1.82	0.77
1:A:225:GLU:HG2	1:A:226:GLU:N	1.97	0.77
1:A:196:ASN:ND2	1:A:198:SER:H	1.84	0.75
1:A:142:LEU:HB3	6:A:1119:HOH:O	1.89	0.72
1:A:231:ALA:HA	1:A:236:LEU:HD12	1.71	0.72
1:A:310:ILE:CD1	1:A:349:ILE:HD12	2.19	0.71
1:A:333:THR:N	1:A:336:GLN:NE2	2.30	0.68
1:A:12:PRO:HG2	1:A:13:MET:H	1.58	0.68
1:A:236:LEU:CB	1:A:247:ALA:HB1	2.24	0.68
1:A:317:GLY:H	5:A:799:ACP:H3B2	1.58	0.68
1:A:235:ASN:O	1:A:237:VAL:N	2.27	0.67
1:A:41:ARG:HG2	1:A:135:GLU:OE2	1.95	0.67
1:A:207:LYS:HD3	1:A:207:LYS:H	1.60	0.67
1:A:235:ASN:N	1:A:235:ASN:OD1	2.29	0.66
1:A:309:LYS:HZ2	1:A:309:LYS:HB2	1.60	0.66
1:A:207:LYS:HD3	1:A:207:LYS:N	2.10	0.65
5:A:799:ACP:N7	6:A:1000:HOH:O	2.29	0.65
1:A:104:LYS:NZ	6:A:1117:HOH:O	2.29	0.65
1:A:330:GLN:NE2	6:A:1039:HOH:O	2.30	0.64
1:A:357:SER:OG	1:A:358:PHE:N	2.30	0.64
1:A:40:LYS:HA	1:A:40:LYS:HE3	1.81	0.62
1:A:40:LYS:HB3	6:A:1087:HOH:O	2.00	0.62
1:A:184:TYR:CZ	1:A:188:ILE:HD11	2.34	0.62
1:A:130:LEU:HB2	6:A:1132:HOH:O	1.97	0.62
1:A:231:ALA:HA	1:A:236:LEU:HD11	1.82	0.61
1:A:146:GLY:N	6:A:1119:HOH:O	2.25	0.61
1:A:11:GLY:O	1:A:14:ARG:HD2	2.00	0.61
1:A:136:ARG:NE	5:A:799:ACP:O3G	2.31	0.60
1:A:66:LEU:HB2	1:A:67:PRO:HD2	1.82	0.60
1:A:309:LYS:O	1:A:309:LYS:HG3	2.00	0.59
1:A:207:LYS:HG2	1:A:208:ASP:N	2.18	0.59
1:A:207:LYS:HG2	1:A:208:ASP:H	1.68	0.59
1:A:133:GLU:CD	1:A:134:LYS:HG2	2.23	0.59
1:A:204:GLU:OE1	1:A:229:HIS:HD2	1.87	0.58

Continued on next page...

Continued from previous page...

Atom-1	Atom-2	Interatomic distance (Å)	Clash overlap (Å)
1:A:271:ALA:N	6:A:1126:HOH:O	2.25	0.58
1:A:223:ASN:HD22	1:A:223:ASN:C	2.08	0.57
1:A:223:ASN:HD22	1:A:226:GLU:H	1.53	0.56
1:A:57:THR:O	1:A:60:GLN:HG3	2.03	0.56
1:A:189:PRO:HA	6:A:1019:HOH:O	2.06	0.56
1:A:236:LEU:HB3	1:A:247:ALA:HB1	1.87	0.56
1:A:97:ASP:HB2	1:A:98:PRO:HD2	1.88	0.55
1:A:193:PHE:H	1:A:218:ASN:ND2	1.97	0.55
1:A:236:LEU:HB2	1:A:247:ALA:HB1	1.88	0.55
1:A:133:GLU:OE2	1:A:134:LYS:HG2	2.07	0.55
1:A:153:ASN:ND2	6:A:1136:HOH:O	2.39	0.55
1:A:196:ASN:HD22	1:A:197:LEU:N	2.05	0.54
1:A:336:GLN:HA	1:A:339:MET:HE2	1.90	0.54
1:A:40:LYS:HE2	1:A:41:ARG:N	2.23	0.54
1:A:346:GLN:HE21	5:A:799:ACP:H2	1.73	0.54
1:A:235:ASN:C	1:A:236:LEU:HG	2.28	0.52
1:A:207:LYS:HE2	1:A:208:ASP:OD1	2.09	0.52
1:A:346:GLN:O	1:A:350:GLN:NE2	2.43	0.52
1:A:145:CYS:HB2	6:A:1119:HOH:O	2.09	0.52
1:A:150:ILE:HG21	1:A:154:TRP:CD1	2.46	0.50
1:A:156:THR:O	1:A:159:SER:HB2	2.11	0.50
1:A:115:ARG:NH1	6:A:1028:HOH:O	2.29	0.50
1:A:50:GLU:HB2	6:A:1007:HOH:O	2.11	0.50
1:A:330:GLN:HG2	6:A:1039:HOH:O	2.11	0.49
1:A:244:LEU:O	1:A:247:ALA:HB3	2.13	0.49
1:A:223:ASN:HD21	1:A:225:GLU:CD	2.16	0.49
1:A:207:LYS:H	1:A:207:LYS:CD	2.26	0.49
1:A:151:PRO:HB2	1:A:153:ASN:OD1	2.13	0.48
1:A:231:ALA:HB1	1:A:237:VAL:HA	1.94	0.48
1:A:184:TYR:CE2	1:A:188:ILE:HD11	2.48	0.48
1:A:12:PRO:CG	1:A:13:MET:H	2.25	0.48
1:A:176:LYS:O	1:A:180:GLU:HG3	2.13	0.48
1:A:225:GLU:HG2	1:A:226:GLU:HG3	1.94	0.48
1:A:269:THR:O	1:A:269:THR:OG1	2.30	0.47
1:A:79:GLN:HE22	1:A:87:SER:N	2.12	0.47
1:A:57:THR:O	1:A:57:THR:HG22	2.15	0.46
1:A:309:LYS:NZ	1:A:309:LYS:HB2	2.29	0.46
1:A:32:SER:O	1:A:36:GLU:HG2	2.15	0.46
1:A:115:ARG:HH22	1:A:153:ASN:ND2	2.13	0.45
1:A:188:ILE:HG23	1:A:189:PRO:HD2	1.99	0.45
1:A:278:THR:C	1:A:279:ARG:HG2	2.28	0.45

Continued on next page...

Continued from previous page...

Atom-1	Atom-2	Interatomic distance (Å)	Clash overlap (Å)
1:A:270:GLY:HA3	1:A:291:ALA:HB2	1.98	0.45
1:A:223:ASN:OD1	1:A:225:GLU:OE2	2.34	0.45
1:A:75:VAL:HG13	1:A:112:LEU:HD21	1.98	0.45
1:A:150:ILE:CG2	1:A:154:TRP:CD1	3.00	0.45
1:A:79:GLN:HE22	1:A:87:SER:H	1.63	0.44
1:A:196:ASN:C	1:A:196:ASN:HD22	2.21	0.44
1:A:223:ASN:HD21	1:A:225:GLU:CG	2.31	0.44
1:A:97:ASP:HB2	1:A:98:PRO:CD	2.47	0.44
1:A:292:ASP:OD1	1:A:294:THR:OG1	2.30	0.43
1:A:150:ILE:HG22	1:A:151:PRO:O	2.18	0.43
1:A:134:LYS:HE3	1:A:134:LYS:HB3	1.59	0.43
1:A:40:LYS:CE	1:A:40:LYS:HA	2.48	0.43
1:A:229:HIS:O	1:A:233:VAL:HG23	2.18	0.43
1:A:279:ARG:HB2	1:A:282:ASN:HB2	2.01	0.42
1:A:37:PHE:HE2	1:A:53:ARG:HB3	1.85	0.42
1:A:34:LEU:HD12	1:A:34:LEU:HA	1.81	0.42
1:A:14:ARG:HG2	6:A:1131:HOH:O	2.20	0.42
1:A:205:LEU:CD1	1:A:205:LEU:N	2.83	0.42
1:A:233:VAL:HG12	1:A:234:HIS:CD2	2.55	0.42
1:A:193:PHE:N	1:A:218:ASN:HD22	2.00	0.41
1:A:282:ASN:HB3	1:A:283:PRO:HD2	2.02	0.41
1:A:223:ASN:HD21	1:A:226:GLU:HG3	1.85	0.41
1:A:333:THR:OG1	1:A:336:GLN:HG3	2.20	0.41
1:A:223:ASN:HD21	1:A:226:GLU:H	1.62	0.41
1:A:162:LEU:HA	1:A:162:LEU:HD13	1.81	0.41
1:A:235:ASN:HB2	1:A:236:LEU:H	1.61	0.40
1:A:309:LYS:CB	1:A:309:LYS:NZ	2.80	0.40
1:A:62:ASN:N	1:A:63:PRO:HD3	2.36	0.40
1:A:333:THR:HG23	1:A:336:GLN:HE21	1.84	0.40

There are no symmetry-related clashes.

5.3 Torsion angles ⓘ

5.3.1 Protein backbone ⓘ

In the following table, the Percentiles column shows the percent Ramachandran outliers of the chain as a percentile score with respect to all X-ray entries followed by that with respect to entries of similar resolution.

The Analysed column shows the number of residues for which the backbone conformation was analysed, and the total number of residues.

Mol	Chain	Analysed	Favoured	Allowed	Outliers	Percentiles
1	A	324/363 (89%)	306 (94%)	15 (5%)	3 (1%)	21 7

All (3) Ramachandran outliers are listed below:

Mol	Chain	Res	Type
1	A	236	LEU
1	A	12	PRO
1	A	198	SER

5.3.2 Protein sidechains ⓘ

In the following table, the Percentiles column shows the percent sidechain outliers of the chain as a percentile score with respect to all X-ray entries followed by that with respect to entries of similar resolution.

The Analysed column shows the number of residues for which the sidechain conformation was analysed, and the total number of residues.

Mol	Chain	Analysed	Rotameric	Outliers	Percentiles
1	A	252/287 (88%)	219 (87%)	33 (13%)	5 0

All (33) residues with a non-rotameric sidechain are listed below:

Mol	Chain	Res	Type
1	A	34	LEU
1	A	40	LYS
1	A	54	ILE
1	A	60	GLN
1	A	64	THR
1	A	67	PRO
1	A	75	VAL
1	A	83	ARG
1	A	84	LYS
1	A	106	LEU
1	A	112	LEU
1	A	115	ARG
1	A	130	LEU
1	A	134	LYS
1	A	136	ARG
1	A	138	LEU
1	A	152	GLU
1	A	159	SER

Continued on next page...

Continued from previous page...

Mol	Chain	Res	Type
1	A	176	LYS
1	A	196	ASN
1	A	207	LYS
1	A	208	ASP
1	A	212	SER
1	A	215	LEU
1	A	223	ASN
1	A	225	GLU
1	A	235	ASN
1	A	236	LEU
1	A	279	ARG
1	A	294	THR
1	A	296	VAL
1	A	309	LYS
1	A	357	SER

Some sidechains can be flipped to improve hydrogen bonding and reduce clashes. All (11) such sidechains are listed below:

Mol	Chain	Res	Type
1	A	62	ASN
1	A	79	GLN
1	A	132	ASN
1	A	196	ASN
1	A	218	ASN
1	A	223	ASN
1	A	229	HIS
1	A	234	HIS
1	A	336	GLN
1	A	342	ASN
1	A	351	HIS

5.3.3 RNA ⓘ

There are no RNA molecules in this entry.

5.4 Non-standard residues in protein, DNA, RNA chains ⓘ

There are no non-standard protein/DNA/RNA residues in this entry.

5.5 Carbohydrates [i](#)

There are no carbohydrates in this entry.

5.6 Ligand geometry [i](#)

Of 4 ligands modelled in this entry, 2 are monoatomic - leaving 2 for Mogul analysis.

In the following table, the Counts columns list the number of bonds (or angles) for which Mogul statistics could be retrieved, the number of bonds (or angles) that are observed in the model and the number of bonds (or angles) that are defined in the chemical component dictionary. The Link column lists molecule types, if any, to which the group is linked. The Z score for a bond length (or angle) is the number of standard deviations the observed value is removed from the expected value. A bond length (or angle) with $|Z| > 2$ is considered an outlier worth inspection. RMSZ is the root-mean-square of all Z scores of the bond lengths (or angles).

Mol	Type	Chain	Res	Link	Bond lengths			Bond angles		
					Counts	RMSZ	$\# Z > 2$	Counts	RMSZ	$\# Z > 2$
4	RPP	A	699	-	20,22,22	3.44	4 (20%)	22,33,33	1.02	1 (4%)
5	ACP	A	799	3	25,33,33	2.19	2 (8%)	31,52,52	2.08	5 (16%)

In the following table, the Chirals column lists the number of chiral outliers, the number of chiral centers analysed, the number of these observed in the model and the number defined in the chemical component dictionary. Similar counts are reported in the Torsion and Rings columns. '-' means no outliers of that kind were identified.

Mol	Type	Chain	Res	Link	Chirals	Torsions	Rings
4	RPP	A	699	-	1/1/6/7	0/6/34/34	0/3/3/3
5	ACP	A	799	3	-	0/15/38/38	0/3/3/3

All (6) bond length outliers are listed below:

Mol	Chain	Res	Type	Atoms	Z	Observed(Å)	Ideal(Å)
4	A	699	RPP	C5-C7	-12.21	1.39	1.50
4	A	699	RPP	C7-I	-6.39	1.97	2.16
4	A	699	RPP	N8-N9	-5.99	1.36	1.43
4	A	699	RPP	C5-C4	-2.80	1.38	1.45
5	A	799	ACP	PB-O1B	-2.14	1.46	1.51
5	A	799	ACP	PB-O3A	9.79	1.69	1.58

All (6) bond angle outliers are listed below:

Mol	Chain	Res	Type	Atoms	Z	Observed(°)	Ideal(°)
5	A	799	ACP	C1'-N9-C4	-7.44	115.72	126.94

Continued on next page...

Continued from previous page...

Mol	Chain	Res	Type	Atoms	Z	Observed(°)	Ideal(°)
5	A	799	ACP	O1B-PB-C3B	-4.71	97.17	109.02
5	A	799	ACP	O1G-PG-C3B	-4.09	101.80	111.13
4	A	699	RPP	C4-N9-C1'	-3.13	119.39	126.75
5	A	799	ACP	O3G-PG-O2G	2.72	116.11	108.13
5	A	799	ACP	O2B-PB-O1B	4.59	124.54	110.12

All (1) chirality outliers are listed below:

Mol	Chain	Res	Type	Atom
4	A	699	RPP	C7

There are no torsion outliers.

There are no ring outliers.

1 monomer is involved in 4 short contacts:

Mol	Chain	Res	Type	Clashes	Symm-Clashes
5	A	799	ACP	4	0

5.7 Other polymers [i](#)

There are no such residues in this entry.

5.8 Polymer linkage issues [i](#)

There are no chain breaks in this entry.

6 Fit of model and data ⓘ

6.1 Protein, DNA and RNA chains ⓘ

EDS was not executed - this section will therefore be empty.

6.2 Non-standard residues in protein, DNA, RNA chains ⓘ

EDS was not executed - this section will therefore be empty.

6.3 Carbohydrates ⓘ

EDS was not executed - this section will therefore be empty.

6.4 Ligands ⓘ

EDS was not executed - this section will therefore be empty.

6.5 Other polymers ⓘ

EDS was not executed - this section will therefore be empty.