



Full wwPDB X-ray Structure Validation Report ⓘ

Jan 31, 2016 – 08:43 PM GMT

PDB ID : 1LOO
Title : Crystal Structure of the Mouse-Muscle Adenylosuccinate Synthetase Ligated with GTP
Authors : Iancu, C.V.; Borza, T.; Fromm, H.J.; Honzatko, R.B.
Deposited on : 2002-05-06
Resolution : 2.20 Å(reported)

This is a Full wwPDB X-ray Structure Validation Report for a publicly released PDB entry.
We welcome your comments at validation@mail.wwpdb.org
A user guide is available at
<http://wwpdb.org/validation/2016/XrayValidationReportHelp>
with specific help available everywhere you see the ⓘ symbol.

The following versions of software and data (see [references ⓘ](#)) were used in the production of this report:

MolProbity : 4.02b-467
Mogul : 1.7 (RC4), CSD as536be (2015)
Xtriage (Phenix) : 1.9-1692
EDS : rb-20026688
Percentile statistics : 20151230.v01 (using entries in the PDB archive December 30th 2015)
Refmac : 5.8.0135
CCP4 : 6.5.0
Ideal geometry (proteins) : Engh & Huber (2001)
Ideal geometry (DNA, RNA) : Parkinson et al. (1996)
Validation Pipeline (wwPDB-VP) : trunk26865

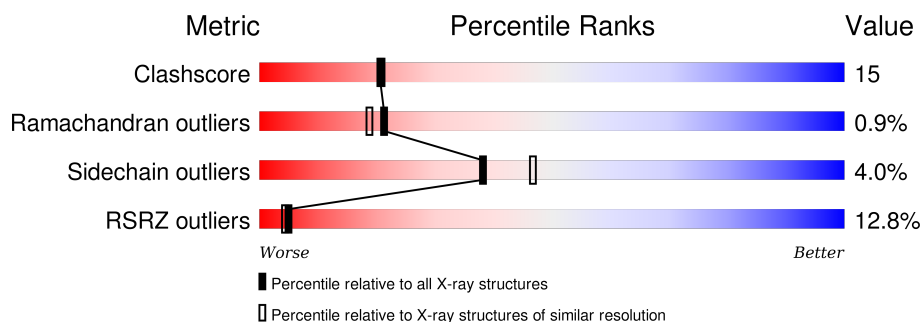
1 Overall quality at a glance

The following experimental techniques were used to determine the structure:

X-RAY DIFFRACTION

The reported resolution of this entry is 2.20 Å.

Percentile scores (ranging between 0-100) for global validation metrics of the entry are shown in the following graphic. The table shows the number of entries on which the scores are based.



Metric	Whole archive (#Entries)	Similar resolution (#Entries, resolution range(Å))
Clashscore	102246	4477 (2.20-2.20)
Ramachandran outliers	100387	4404 (2.20-2.20)
Sidechain outliers	100360	4405 (2.20-2.20)
RSRZ outliers	91569	3781 (2.20-2.20)

The table below summarises the geometric issues observed across the polymeric chains and their fit to the electron density. The red, orange, yellow and green segments on the lower bar indicate the fraction of residues that contain outliers for ≥ 3 , 2, 1 and 0 types of geometric quality criteria. A grey segment represents the fraction of residues that are not modelled. The numeric value for each fraction is indicated below the corresponding segment, with a dot representing fractions $\leq 5\%$. The upper red bar (where present) indicates the fraction of residues that have poor fit to the electron density. The numeric value is given above the bar.

Mol	Chain	Length	Quality of chain
1	A	457	

2 Entry composition [i](#)

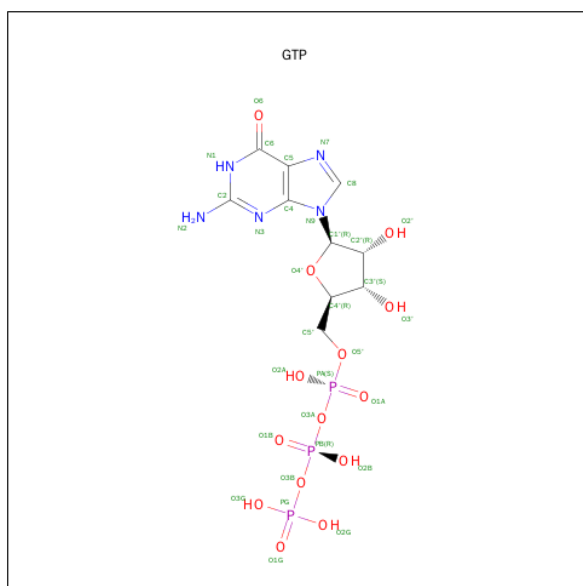
There are 3 unique types of molecules in this entry. The entry contains 3485 atoms, of which 0 are hydrogens and 0 are deuteriums.

In the tables below, the ZeroOcc column contains the number of atoms modelled with zero occupancy, the AltConf column contains the number of residues with at least one atom in alternate conformation and the Trace column contains the number of residues modelled with at most 2 atoms.

- Molecule 1 is a protein called adenylosuccinate synthetase.

Mol	Chain	Residues	Atoms					ZeroOcc	AltConf	Trace
1	A	431	Total	C	N	O	S	0	0	0
			3353	2133	589	619	12			

- Molecule 2 is GUANOSINE-5'-TRIPHOSPHATE (three-letter code: GTP) (formula: $C_{10}H_{16}N_5O_{14}P_3$).



- Molecule 1: adenylosuccinate synthetase



4 Data and refinement statistics

Property	Value	Source
Space group	P 43 21 2	Depositor
Cell constants a, b, c, α , β , γ	69.94Å 69.94Å 198.09Å 90.00° 90.00° 90.00°	Depositor
Resolution (Å)	10.00 – 2.20 29.82 – 2.20	Depositor EDS
% Data completeness (in resolution range)	(Not available) (10.00-2.20) 99.4 (29.82-2.20)	Depositor EDS
R_{merge}	0.04	Depositor
R_{sym}	(Not available)	Depositor
$\langle I/\sigma(I) \rangle$ ¹	2.17 (at 2.20Å)	Xtriage
Refinement program	CNS	Depositor
R, R_{free}	0.244 , 0.276 0.249 , (Not available)	Depositor DCC
R_{free} test set	No test flags present.	DCC
Wilson B-factor (Å ²)	48.1	Xtriage
Anisotropy	0.016	Xtriage
Bulk solvent k_{sol} (e/Å ³), B_{sol} (Å ²)	0.34 , 40.2	EDS
Estimated twinning fraction	No twinning to report.	Xtriage
L-test for twinning ²	$\langle L \rangle = 0.50$, $\langle L^2 \rangle = 0.33$	Xtriage
Outliers	2 of 25715 reflections (0.008%)	Xtriage
F_o, F_c correlation	0.94	EDS
Total number of atoms	3485	wwPDB-VP
Average B, all atoms (Å ²)	48.0	wwPDB-VP

Xtriage's analysis on translational NCS is as follows: *The largest off-origin peak in the Patterson function is 6.66% of the height of the origin peak. No significant pseudotranslation is detected.*

¹Intensities estimated from amplitudes.

²Theoretical values of $\langle |L| \rangle$, $\langle L^2 \rangle$ for acentric reflections are 0.5, 0.375 respectively for untwinned datasets, and 0.333, 0.2 for perfectly twinned datasets.

5 Model quality

5.1 Standard geometry

Bond lengths and bond angles in the following residue types are not validated in this section: GTP

The Z score for a bond length (or angle) is the number of standard deviations the observed value is removed from the expected value. A bond length (or angle) with $|Z| > 5$ is considered an outlier worth inspection. RMSZ is the root-mean-square of all Z scores of the bond lengths (or angles).

Mol	Chain	Bond lengths		Bond angles	
		RMSZ	$\# Z > 5$	RMSZ	$\# Z > 5$
1	A	0.33	0/3423	0.58	0/4628

There are no bond length outliers.

There are no bond angle outliers.

There are no chirality outliers.

There are no planarity outliers.

5.2 Too-close contacts

In the following table, the Non-H and H(model) columns list the number of non-hydrogen atoms and hydrogen atoms in the chain respectively. The H(added) column lists the number of hydrogen atoms added and optimized by MolProbity. The Clashes column lists the number of clashes within the asymmetric unit, whereas Symm-Clashes lists symmetry related clashes.

Mol	Chain	Non-H	H(model)	H(added)	Clashes	Symm-Clashes
1	A	3353	0	3359	98	0
2	A	32	0	12	0	0
3	A	100	0	0	1	0
All	All	3485	0	3371	98	0

The all-atom clashscore is defined as the number of clashes found per 1000 atoms (including hydrogen atoms). The all-atom clashscore for this structure is 15.

All (98) close contacts within the same asymmetric unit are listed below, sorted by their clash magnitude.

Atom-1	Atom-2	Interatomic distance (Å)	Clash overlap (Å)
1:A:178:THR:HG23	1:A:199:LEU:HD13	1.59	0.84

Continued on next page...

Continued from previous page...

Atom-1	Atom-2	Interatomic distance (Å)	Clash overlap (Å)
1:A:163:THR:HG22	1:A:164:LYS:H	1.47	0.79
1:A:185:LEU:HD22	1:A:225:ALA:HB2	1.71	0.72
1:A:233:ARG:HG3	1:A:233:ARG:HH11	1.54	0.72
1:A:86:PRO:HD3	1:A:98:ILE:HD11	1.72	0.72
1:A:105:HIS:CE1	1:A:107:PRO:HG2	2.27	0.70
1:A:95:VAL:HG11	1:A:129:ILE:HD12	1.74	0.69
1:A:262:ILE:O	1:A:262:ILE:HD13	1.95	0.66
1:A:229:ARG:HH21	1:A:229:ARG:HB2	1.60	0.66
1:A:163:THR:HG22	1:A:164:LYS:N	2.11	0.65
1:A:62:ARG:HG2	1:A:62:ARG:HH11	1.61	0.65
1:A:150:VAL:HA	1:A:154:ALA:HB2	1.78	0.65
1:A:229:ARG:NH2	1:A:229:ARG:HB2	2.11	0.64
1:A:193:SER:HB3	1:A:218:LEU:HD21	1.80	0.63
1:A:155:GLN:OE1	1:A:156:GLU:HG2	2.00	0.61
1:A:177:ARG:HG2	1:A:177:ARG:HH11	1.66	0.60
1:A:95:VAL:CG1	1:A:129:ILE:HD12	2.30	0.60
1:A:75:VAL:HG11	1:A:90:ILE:HG21	1.84	0.60
1:A:153:GLN:HA	1:A:157:GLY:HA3	1.84	0.60
1:A:75:VAL:HG23	1:A:78:LYS:NZ	2.18	0.59
1:A:117:GLU:HA	1:A:121:LEU:O	2.03	0.59
1:A:31:SER:O	1:A:243:LEU:HD22	2.03	0.58
1:A:129:ILE:HD13	1:A:238:PHE:CE2	2.37	0.58
1:A:78:LYS:HB2	1:A:78:LYS:NZ	2.19	0.57
1:A:331:VAL:HG13	1:A:332:THR:HG23	1.86	0.57
1:A:351:HIS:HD2	1:A:356:PHE:H	1.50	0.57
1:A:145:ASP:HB2	1:A:169:PRO:HG2	1.87	0.56
1:A:233:ARG:HG3	1:A:233:ARG:NH1	2.20	0.56
1:A:122:LYS:HD3	1:A:123:ASP:H	1.68	0.56
1:A:185:LEU:CD2	1:A:225:ALA:HB2	2.36	0.55
1:A:349:TYR:HA	1:A:352:MET:CE	2.37	0.55
1:A:122:LYS:HD3	1:A:123:ASP:N	2.22	0.55
1:A:123:ASP:HA	1:A:125:GLU:OE2	2.06	0.54
1:A:442:LYS:HD3	1:A:443:TRP:CH2	2.43	0.54
1:A:189:PHE:CZ	1:A:222:LYS:HB2	2.41	0.54
1:A:178:THR:HG23	1:A:199:LEU:CD1	2.34	0.54
1:A:198:ASN:O	1:A:202:GLN:HG3	2.07	0.54
1:A:92:THR:HG22	1:A:127:ARG:NH2	2.23	0.53
1:A:144:VAL:O	1:A:148:GLN:HG3	2.09	0.53
1:A:143:ALA:O	1:A:147:LEU:HD13	2.10	0.52
1:A:380:LYS:HE2	1:A:383:GLY:O	2.09	0.52
1:A:204:GLN:HG3	1:A:212:ILE:HD12	1.92	0.52

Continued on next page...

Continued from previous page...

Atom-1	Atom-2	Interatomic distance (Å)	Clash overlap (Å)
1:A:115:LYS:HD2	1:A:115:LYS:C	2.31	0.52
1:A:229:ARG:CB	1:A:229:ARG:HH21	2.22	0.51
1:A:323:GLN:NE2	1:A:336:LYS:HB3	2.25	0.51
1:A:210:LEU:HD12	1:A:212:ILE:HG13	1.92	0.51
1:A:349:TYR:HA	1:A:352:MET:HE2	1.91	0.51
1:A:66:GLY:HA2	1:A:273:SER:OG	2.11	0.51
1:A:237:TYR:CE1	1:A:241:GLU:HG3	2.45	0.51
1:A:75:VAL:HG23	1:A:78:LYS:HZ2	1.77	0.50
1:A:442:LYS:HD3	1:A:443:TRP:CZ3	2.47	0.50
1:A:317:GLU:CD	1:A:317:GLU:H	2.14	0.50
1:A:323:GLN:OE1	1:A:336:LYS:HD3	2.12	0.49
1:A:153:GLN:HB3	1:A:158:LYS:O	2.12	0.49
1:A:80:TYR:OH	1:A:120:GLY:HA3	2.13	0.48
1:A:321:LEU:HD23	1:A:370:LEU:HD21	1.95	0.48
1:A:144:VAL:HG21	1:A:203:HIS:HD2	1.77	0.48
1:A:200:ALA:HB1	1:A:212:ILE:HD13	1.93	0.48
1:A:434:GLU:HG2	1:A:441:VAL:HG23	1.96	0.47
1:A:404:GLU:HG2	1:A:432:PHE:CZ	2.50	0.47
1:A:351:HIS:CD2	1:A:356:PHE:H	2.31	0.47
1:A:106:LEU:CD2	1:A:136:LEU:HD22	2.45	0.47
1:A:60:VAL:HG11	1:A:88:GLY:HA3	1.96	0.46
1:A:276:THR:HB	1:A:354:ASN:OD1	2.15	0.46
1:A:160:ILE:HG22	1:A:161:GLY:N	2.29	0.46
1:A:262:ILE:C	1:A:262:ILE:HD13	2.37	0.45
1:A:150:VAL:O	1:A:150:VAL:HG12	2.16	0.45
1:A:196:PHE:HZ	1:A:217:GLN:HE21	1.64	0.45
1:A:193:SER:CB	1:A:218:LEU:HD21	2.45	0.45
1:A:75:VAL:HG11	1:A:90:ILE:CG2	2.46	0.45
1:A:259:LEU:HD11	1:A:346:ILE:HG12	1.99	0.45
1:A:341:TRP:CE2	1:A:374:LYS:HB2	2.52	0.45
1:A:43:ASP:O	1:A:299:LYS:HE2	2.17	0.45
1:A:146:GLY:O	1:A:150:VAL:HG23	2.16	0.44
1:A:113:ALA:HB1	1:A:124:TRP:CZ2	2.52	0.44
1:A:92:THR:HA	1:A:127:ARG:HE	1.83	0.44
1:A:38:GLY:N	1:A:46:LYS:HD3	2.33	0.44
1:A:79:GLU:O	1:A:119:LYS:NZ	2.49	0.43
1:A:67:ASN:HB3	1:A:256:ASN:HD21	1.84	0.43
1:A:78:LYS:HD3	1:A:78:LYS:N	2.34	0.43
1:A:319:GLY:O	1:A:323:GLN:HB2	2.19	0.43
1:A:67:ASN:CB	1:A:256:ASN:HD21	2.31	0.43
1:A:163:THR:CG2	1:A:164:LYS:H	2.23	0.43

Continued on next page...

Continued from previous page...

Atom-1	Atom-2	Interatomic distance (Å)	Clash overlap (Å)
1:A:160:ILE:HG23	1:A:268:PRO:O	2.18	0.43
1:A:132:ASP:HB3	1:A:232:VAL:CG1	2.49	0.42
1:A:62:ARG:HG2	1:A:62:ARG:NH1	2.29	0.42
1:A:210:LEU:HD13	1:A:211:GLU:N	2.35	0.42
1:A:98:ILE:HG21	1:A:104:ILE:HD11	2.02	0.42
1:A:443:TRP:HA	1:A:454:ILE:O	2.20	0.42
1:A:41:TRP:NE1	1:A:304:ARG:NH2	2.68	0.42
1:A:93:LYS:NZ	1:A:93:LYS:HB3	2.34	0.41
1:A:351:HIS:CD2	1:A:356:PHE:N	2.88	0.41
1:A:392:ASN:OD1	1:A:394:GLU:HB2	2.20	0.41
1:A:182:ILE:O	1:A:186:LEU:HD13	2.20	0.41
1:A:259:LEU:HA	1:A:265:GLY:HA2	2.02	0.41
1:A:135:HIS:HD2	3:A:546:HOH:O	2.03	0.41
1:A:105:HIS:NE2	1:A:107:PRO:HG2	2.36	0.40
1:A:177:ARG:HG2	1:A:177:ARG:NH1	2.34	0.40

There are no symmetry-related clashes.

5.3 Torsion angles

5.3.1 Protein backbone

In the following table, the Percentiles column shows the percent Ramachandran outliers of the chain as a percentile score with respect to all X-ray entries followed by that with respect to entries of similar resolution.

The Analysed column shows the number of residues for which the backbone conformation was analysed, and the total number of residues.

Mol	Chain	Analysed	Favoured	Allowed	Outliers	Percentiles	
1	A	429/457 (94%)	406 (95%)	19 (4%)	4 (1%)	21	19

All (4) Ramachandran outliers are listed below:

Mol	Chain	Res	Type
1	A	160	ILE
1	A	151	GLN
1	A	214	VAL
1	A	150	VAL

5.3.2 Protein sidechains ⓘ

In the following table, the Percentiles column shows the percent sidechain outliers of the chain as a percentile score with respect to all X-ray entries followed by that with respect to entries of similar resolution.

The Analysed column shows the number of residues for which the sidechain conformation was analysed, and the total number of residues.

Mol	Chain	Analysed	Rotameric	Outliers	Percentiles
1	A	354/373 (95%)	340 (96%)	14 (4%)	38 47

All (14) residues with a non-rotameric sidechain are listed below:

Mol	Chain	Res	Type
1	A	41	TRP
1	A	78	LYS
1	A	125	GLU
1	A	152	ARG
1	A	153	GLN
1	A	155	GLN
1	A	177	ARG
1	A	178	THR
1	A	185	LEU
1	A	210	LEU
1	A	262	ILE
1	A	310	PHE
1	A	347	LEU
1	A	450	ARG

Some sidechains can be flipped to improve hydrogen bonding and reduce clashes. All (12) such sidechains are listed below:

Mol	Chain	Res	Type
1	A	68	ASN
1	A	135	HIS
1	A	153	GLN
1	A	159	ASN
1	A	198	ASN
1	A	202	GLN
1	A	203	HIS
1	A	204	GLN
1	A	217	GLN
1	A	324	ASN
1	A	351	HIS

Continued on next page...

Continued from previous page...

Mol	Chain	Res	Type
1	A	382	ASN

5.3.3 RNA ⓘ

There are no RNA molecules in this entry.

5.4 Non-standard residues in protein, DNA, RNA chains ⓘ

There are no non-standard protein/DNA/RNA residues in this entry.

5.5 Carbohydrates ⓘ

There are no carbohydrates in this entry.

5.6 Ligand geometry ⓘ

1 ligand is modelled in this entry.

In the following table, the Counts columns list the number of bonds (or angles) for which Mogul statistics could be retrieved, the number of bonds (or angles) that are observed in the model and the number of bonds (or angles) that are defined in the chemical component dictionary. The Link column lists molecule types, if any, to which the group is linked. The Z score for a bond length (or angle) is the number of standard deviations the observed value is removed from the expected value. A bond length (or angle) with $|Z| > 2$ is considered an outlier worth inspection. RMSZ is the root-mean-square of all Z scores of the bond lengths (or angles).

Mol	Type	Chain	Res	Link	Bond lengths			Bond angles		
					Counts	RMSZ	$\# Z > 2$	Counts	RMSZ	$\# Z > 2$
2	GTP	A	458	-	25,34,34	0.99	1 (4%)	34,54,54	2.12	4 (11%)

In the following table, the Chirals column lists the number of chiral outliers, the number of chiral centers analysed, the number of these observed in the model and the number defined in the chemical component dictionary. Similar counts are reported in the Torsion and Rings columns. '-' means no outliers of that kind were identified.

Mol	Type	Chain	Res	Link	Chirals	Torsions	Rings
2	GTP	A	458	-	-	0/18/38/38	0/3/3/3

All (1) bond length outliers are listed below:

Mol	Chain	Res	Type	Atoms	Z	Observed(Å)	Ideal(Å)
2	A	458	GTP	C6-N1	3.38	1.39	1.33

All (4) bond angle outliers are listed below:

Mol	Chain	Res	Type	Atoms	Z	Observed(°)	Ideal(°)
2	A	458	GTP	C5-C6-N1	-8.78	111.59	123.59
2	A	458	GTP	N3-C2-N1	-2.40	123.79	127.44
2	A	458	GTP	PB-O3B-PG	-2.08	125.68	132.67
2	A	458	GTP	C6-N1-C2	6.70	125.24	115.94

There are no chirality outliers.

There are no torsion outliers.

There are no ring outliers.

No monomer is involved in short contacts.

5.7 Other polymers [i](#)

There are no such residues in this entry.

5.8 Polymer linkage issues [i](#)

There are no chain breaks in this entry.

6 Fit of model and data ⓘ

6.1 Protein, DNA and RNA chains ⓘ

In the following table, the column labelled ‘#RSRZ> 2’ contains the number (and percentage) of RSRZ outliers, followed by percent RSRZ outliers for the chain as percentile scores relative to all X-ray entries and entries of similar resolution. The OWAB column contains the minimum, median, 95th percentile and maximum values of the occupancy-weighted average B-factor per residue. The column labelled ‘Q< 0.9’ lists the number of (and percentage) of residues with an average occupancy less than 0.9.

Mol	Chain	Analysed	<RSRZ>	#RSRZ>2	OWAB(Å ²)	Q<0.9
1	A	431/457 (94%)	0.91	55 (12%) 5 4	26, 43, 79, 101	0

All (55) RSRZ outliers are listed below:

Mol	Chain	Res	Type	RSRZ
1	A	162	THR	12.7
1	A	160	ILE	11.8
1	A	161	GLY	10.6
1	A	150	VAL	10.3
1	A	163	THR	10.2
1	A	155	GLN	9.0
1	A	159	ASN	8.9
1	A	156	GLU	7.6
1	A	154	ALA	7.6
1	A	157	GLY	6.9
1	A	153	GLN	6.7
1	A	146	GLY	6.6
1	A	75	VAL	6.2
1	A	149	GLU	6.0
1	A	147	LEU	5.4
1	A	158	LYS	5.3
1	A	121	LEU	5.2
1	A	67	ASN	5.0
1	A	382	ASN	4.8
1	A	66	GLY	4.8
1	A	76	ASP	4.8
1	A	164	LYS	4.8
1	A	151	GLN	4.3
1	A	152	ARG	4.3
1	A	77	GLY	4.1
1	A	190	ASP	3.5
1	A	74	VAL	3.5

Continued on next page...

Continued from previous page...

Mol	Chain	Res	Type	RSRZ
1	A	78	LYS	3.4
1	A	342	LEU	3.4
1	A	209	THR	3.3
1	A	182	ILE	3.2
1	A	300	ALA	3.2
1	A	331	VAL	3.1
1	A	222	LYS	2.9
1	A	381	LEU	2.9
1	A	117	GLU	2.8
1	A	28	ALA	2.8
1	A	134	ALA	2.8
1	A	191	GLU	2.8
1	A	344	LEU	2.7
1	A	225	ALA	2.7
1	A	384	LYS	2.3
1	A	361	LEU	2.3
1	A	210	LEU	2.3
1	A	123	ASP	2.2
1	A	375	VAL	2.2
1	A	199	LEU	2.2
1	A	298	VAL	2.1
1	A	346	ILE	2.1
1	A	131	SER	2.1
1	A	367	LEU	2.1
1	A	347	LEU	2.1
1	A	143	ALA	2.0
1	A	181	ARG	2.0
1	A	275	CYS	2.0

6.2 Non-standard residues in protein, DNA, RNA chains [i](#)

There are no non-standard protein/DNA/RNA residues in this entry.

6.3 Carbohydrates [i](#)

There are no carbohydrates in this entry.

6.4 Ligands [i](#)

In the following table, the Atoms column lists the number of modelled atoms in the group and the number defined in the chemical component dictionary. LLDF column lists the quality of electron

density of the group with respect to its neighbouring residues in protein, DNA or RNA chains. The B-factors column lists the minimum, median, 95th percentile and maximum values of B factors of atoms in the group. The column labelled 'Q< 0.9' lists the number of atoms with occupancy less than 0.9.

Mol	Type	Chain	Res	Atoms	RSCC	RSR	LLDF	B-factors(Å ²)	Q<0.9
2	GTP	A	458	32/32	0.88	0.16	-0.00	35,43,52,57	5

6.5 Other polymers [i](#)

There are no such residues in this entry.