



# Full wwPDB X-ray Structure Validation Report ⓘ

Feb 1, 2016 – 06:31 PM GMT

PDB ID : 4LUT  
Title : alanine racemase [Clostridium difficile 630] complex with cycloserine  
Authors : Asojo, O.A.  
Deposited on : 2013-07-25  
Resolution : 2.26 Å(reported)

This is a Full wwPDB X-ray Structure Validation Report for a publicly released PDB entry.  
We welcome your comments at [validation@mail.wwpdb.org](mailto:validation@mail.wwpdb.org)  
A user guide is available at  
<http://wwpdb.org/validation/2016/XrayValidationReportHelp>  
with specific help available everywhere you see the ⓘ symbol.

---

The following versions of software and data (see [references ⓘ](#)) were used in the production of this report:

MolProbity : 4.02b-467  
Mogul : 1.7 (RC4), CSD as536be (2015)  
Xtriage (Phenix) : 1.9-1692  
EDS : rb-20026688  
Percentile statistics : 20151230.v01 (using entries in the PDB archive December 30th 2015)  
Refmac : 5.8.0135  
CCP4 : 6.5.0  
Ideal geometry (proteins) : Engh & Huber (2001)  
Ideal geometry (DNA, RNA) : Parkinson et al. (1996)  
Validation Pipeline (wwPDB-VP) : trunk26865

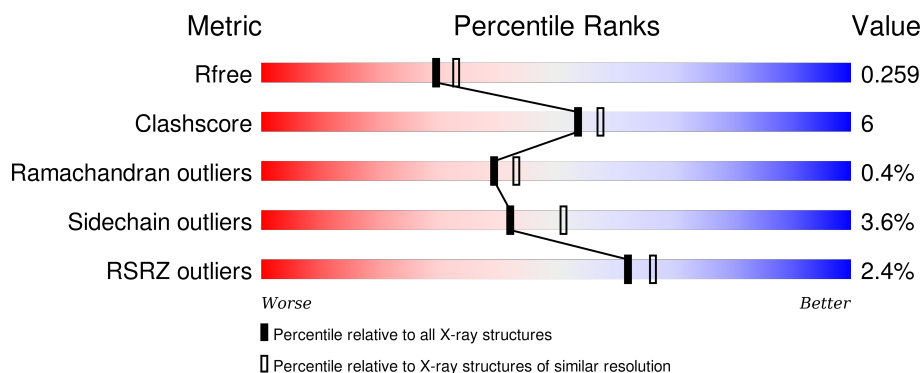
# 1 Overall quality at a glance

The following experimental techniques were used to determine the structure:

## *X-RAY DIFFRACTION*

The reported resolution of this entry is 2.26 Å.

Percentile scores (ranging between 0-100) for global validation metrics of the entry are shown in the following graphic. The table shows the number of entries on which the scores are based.



Metric	Whole archive (#Entries)	Similar resolution (#Entries, resolution range(Å))
$R_{free}$	91344	1640 (2.28-2.24)
Clashscore	102246	1095 (2.26-2.26)
Ramachandran outliers	100387	1063 (2.26-2.26)
Sidechain outliers	100360	1063 (2.26-2.26)
RSRZ outliers	91569	1647 (2.28-2.24)

The table below summarises the geometric issues observed across the polymeric chains and their fit to the electron density. The red, orange, yellow and green segments on the lower bar indicate the fraction of residues that contain outliers for  $\geq 3$ , 2, 1 and 0 types of geometric quality criteria. A grey segment represents the fraction of residues that are not modelled. The numeric value for each fraction is indicated below the corresponding segment, with a dot representing fractions  $\leq 5\%$ . The upper red bar (where present) indicates the fraction of residues that have poor fit to the electron density. The numeric value is given above the bar.

Mol	Chain	Length	Quality of chain
1	A	385	<div> <div>3%</div> <div> <div></div> <div>78%</div> <div>19%</div> <div>• •</div> </div> </div>
2	B	385	<div> <div>2%</div> <div> <div></div> <div>84%</div> <div>9%</div> <div>• 5%</div> </div> </div>

## 2 Entry composition [i](#)

There are 4 unique types of molecules in this entry. The entry contains 6061 atoms, of which 0 are hydrogens and 0 are deuteriums.

In the tables below, the ZeroOcc column contains the number of atoms modelled with zero occupancy, the AltConf column contains the number of residues with at least one atom in alternate conformation and the Trace column contains the number of residues modelled with at most 2 atoms.

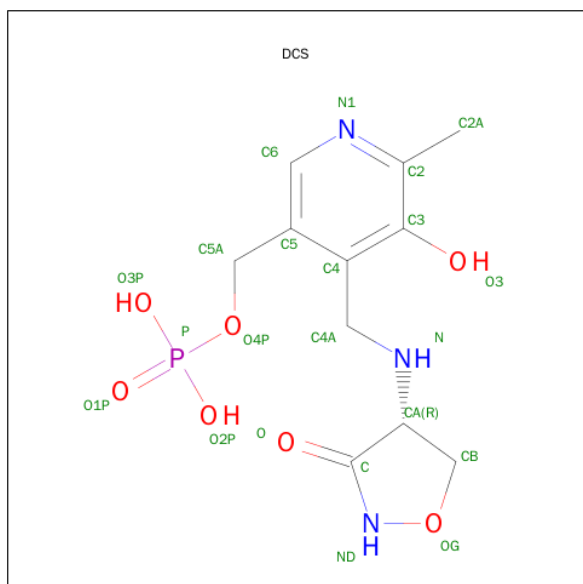
- Molecule 1 is a protein called Alanine racemase.

Mol	Chain	Residues	Atoms					ZeroOcc	AltConf	Trace
1	A	375	Total	C	N	O	S	0	0	0
			2963	1886	493	569	15			

- Molecule 2 is a protein called Alanine racemase.

Mol	Chain	Residues	Atoms					ZeroOcc	AltConf	Trace
2	B	364	Total	C	N	O	S	0	0	0
			2883	1830	483	554	16			

- Molecule 3 is D-[3-HYDROXY-2-METHYL-5-PHOSPHONOOXYMETHYL-PYRIDIN-4-YLMETHYL]-N,O-CYCLOSERYLAMIDE (three-letter code: DCS) (formula:  $C_{11}H_{16}N_3O_7P$ ).



Mol	Chain	Residues	Atoms					ZeroOcc	AltConf
3	A	1	Total	C	N	O	P	0	0
			22	11	3	7	1		

*Continued on next page...*

*Continued from previous page...*

Mol	Chain	Residues	Atoms					ZeroOcc	AltConf
3	B	1	Total	C	N	O	P	0	0
			22	11	3	7	1		

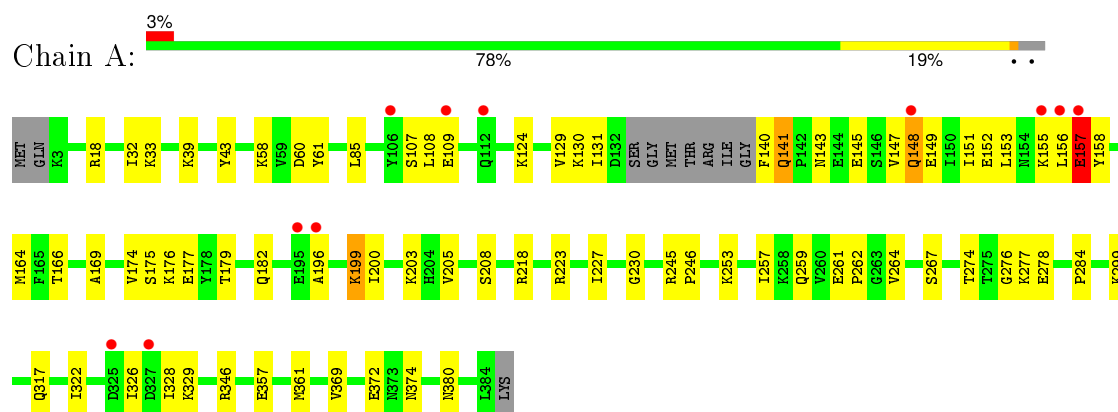
- Molecule 4 is water.

Mol	Chain	Residues	Atoms		ZeroOcc	AltConf
4	A	82	Total	O	0	0
			82	82		
4	B	89	Total	O	0	0
			89	89		

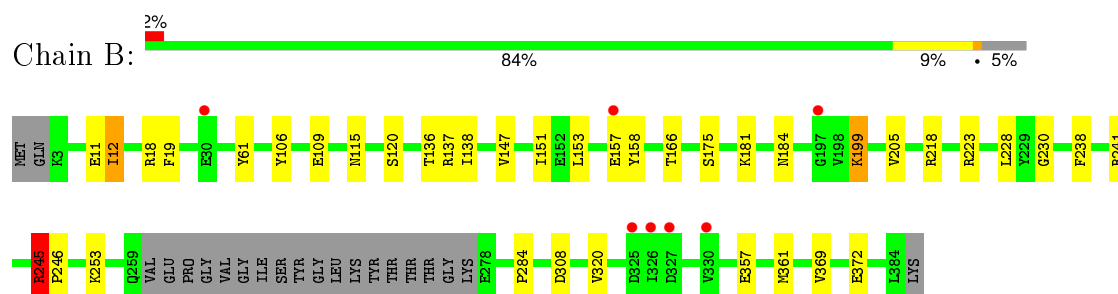
### 3 Residue-property plots [i](#)

These plots are drawn for all protein, RNA and DNA chains in the entry. The first graphic for a chain summarises the proportions of errors displayed in the second graphic. The second graphic shows the sequence view annotated by issues in geometry and electron density. Residues are color-coded according to the number of geometric quality criteria for which they contain at least one outlier: green = 0, yellow = 1, orange = 2 and red = 3 or more. A red dot above a residue indicates a poor fit to the electron density ( $RSRZ > 2$ ). Stretches of 2 or more consecutive residues without any outlier are shown as a green connector. Residues present in the sample, but not in the model, are shown in grey.

#### • Molecule 1: Alanine racemase



#### • Molecule 2: Alanine racemase



## 4 Data and refinement statistics

Property	Value	Source
Space group	P 21 21 21	Depositor
Cell constants a, b, c, $\alpha$ , $\beta$ , $\gamma$	57.84Å 138.97Å 144.89Å 90.00° 90.00° 90.00°	Depositor
Resolution (Å)	45.62 – 2.26 45.20 – 2.26	Depositor EDS
% Data completeness (in resolution range)	64.0 (45.62-2.26) 64.0 (45.20-2.26)	Depositor EDS
$R_{merge}$	0.13	Depositor
$R_{sym}$	(Not available)	Depositor
$\langle I/\sigma(I) \rangle$ <sup>1</sup>	1.94 (at 2.27Å)	Xtriage
Refinement program	REFMAC 5.8.0049	Depositor
R, $R_{free}$	0.210 , 0.248 0.224 , 0.259	Depositor DCC
$R_{free}$ test set	1785 reflections (5.28%)	DCC
Wilson B-factor (Å <sup>2</sup> )	27.2	Xtriage
Anisotropy	0.549	Xtriage
Bulk solvent $k_{sol}$ (e/Å <sup>3</sup> ), $B_{sol}$ (Å <sup>2</sup> )	0.35 , 29.0	EDS
Estimated twinning fraction	0.000 for -h,l,k	Xtriage
L-test for twinning <sup>2</sup>	$\langle  L  \rangle = 0.50$ , $\langle L^2 \rangle = 0.34$	Xtriage
Outliers	0 of 35577 reflections	Xtriage
$F_o, F_c$ correlation	0.93	EDS
Total number of atoms	6061	wwPDB-VP
Average B, all atoms (Å <sup>2</sup> )	33.0	wwPDB-VP

Xtriage's analysis on translational NCS is as follows: *The largest off-origin peak in the Patterson function is 19.01% of the height of the origin peak. No significant pseudotranslation is detected.*

<sup>1</sup>Intensities estimated from amplitudes.

<sup>2</sup>Theoretical values of  $\langle |L| \rangle$ ,  $\langle L^2 \rangle$  for acentric reflections are 0.5, 0.375 respectively for untwinned datasets, and 0.333, 0.2 for perfectly twinned datasets.

## 5 Model quality [i](#)

### 5.1 Standard geometry [i](#)

Bond lengths and bond angles in the following residue types are not validated in this section: DCS, KCX

The Z score for a bond length (or angle) is the number of standard deviations the observed value is removed from the expected value. A bond length (or angle) with  $|Z| > 5$  is considered an outlier worth inspection. RMSZ is the root-mean-square of all Z scores of the bond lengths (or angles).

Mol	Chain	Bond lengths		Bond angles	
		RMSZ	$\# Z  > 5$	RMSZ	$\# Z  > 5$
1	A	0.56	0/3005	0.77	8/4054 (0.2%)
2	B	0.57	0/2909	0.71	5/3921 (0.1%)
All	All	0.57	0/5914	0.74	13/7975 (0.2%)

There are no bond length outliers.

All (13) bond angle outliers are listed below:

Mol	Chain	Res	Type	Atoms	Z	Observed(°)	Ideal(°)
1	A	245	ARG	NE-CZ-NH1	10.03	125.32	120.30
1	A	245	ARG	NE-CZ-NH2	-9.95	115.33	120.30
1	A	157	GLU	N-CA-C	8.95	135.16	111.00
1	A	158	TYR	N-CA-CB	-8.82	94.72	110.60
2	B	223	ARG	NE-CZ-NH1	7.86	124.23	120.30
2	B	245	ARG	NE-CZ-NH1	7.35	123.97	120.30
2	B	223	ARG	NE-CZ-NH2	-7.24	116.68	120.30
2	B	245	ARG	NE-CZ-NH2	-6.73	116.93	120.30
1	A	223	ARG	NE-CZ-NH1	6.59	123.59	120.30
1	A	141	GLN	C-N-CD	5.68	140.32	128.40
1	A	199	LYS	N-CA-C	5.55	125.99	111.00
1	A	223	ARG	NE-CZ-NH2	-5.39	117.61	120.30
2	B	245	ARG	C-N-CD	5.24	139.41	128.40

There are no chirality outliers.

There are no planarity outliers.

### 5.2 Too-close contacts [i](#)

In the following table, the Non-H and H(model) columns list the number of non-hydrogen atoms and hydrogen atoms in the chain respectively. The H(added) column lists the number of hydrogen

atoms added and optimized by MolProbity. The Clashes column lists the number of clashes within the asymmetric unit, whereas Symm-Clashes lists symmetry related clashes.

Mol	Chain	Non-H	H(model)	H(added)	Clashes	Symm-Clashes
1	A	2963	0	3022	60	0
2	B	2883	0	2935	18	0
3	A	22	0	13	3	0
3	B	22	0	14	0	0
4	A	82	0	0	4	0
4	B	89	0	0	1	0
All	All	6061	0	5984	77	0

The all-atom clashscore is defined as the number of clashes found per 1000 atoms (including hydrogen atoms). The all-atom clashscore for this structure is 6.

All (77) close contacts within the same asymmetric unit are listed below, sorted by their clash magnitude.

Atom-1	Atom-2	Interatomic distance (Å)	Clash overlap (Å)
1:A:326:ILE:HD12	1:A:328:ILE:CG2	2.09	0.82
1:A:33:LYS:HA	1:A:60:ASP:OD2	1.80	0.81
1:A:33:LYS:CA	1:A:60:ASP:OD2	2.34	0.75
1:A:326:ILE:HD12	1:A:328:ILE:HG23	1.67	0.75
1:A:33:LYS:CB	1:A:60:ASP:OD2	2.40	0.69
2:B:147:VAL:O	2:B:151:ILE:HD12	1.93	0.68
1:A:148:GLN:O	1:A:151:ILE:HG13	1.96	0.66
2:B:115:ASN:OD1	2:B:157:GLU:O	2.14	0.65
1:A:200:ILE:HG21	1:A:203:LYS:HE3	1.78	0.65
1:A:200:ILE:CG2	1:A:203:LYS:HG2	2.27	0.65
1:A:274:THR:CG2	1:A:276:GLY:O	2.46	0.64
1:A:169:ALA:H	1:A:182:GLN:HE22	1.47	0.63
1:A:176:LYS:HA	4:A:519:HOH:O	1.97	0.63
1:A:131:ILE:HD11	1:A:164:MET:SD	2.41	0.60
1:A:176:LYS:O	1:A:179:THR:N	2.35	0.60
1:A:200:ILE:CG2	1:A:203:LYS:HE3	2.33	0.57
1:A:39:LYS:CE	3:A:401:DCS:H4A1	2.34	0.57
1:A:274:THR:HG22	1:A:276:GLY:O	2.03	0.57
1:A:200:ILE:HG22	1:A:203:LYS:HG2	1.88	0.56
2:B:18:ARG:NH2	2:B:372:GLU:OE2	2.38	0.56
1:A:257:ILE:HD11	1:A:328:ILE:HD11	1.88	0.56
1:A:322:ILE:HG13	1:A:328:ILE:CD1	2.35	0.56
1:A:85:LEU:HD22	3:A:401:DCS:H2A3	1.87	0.56
1:A:176:LYS:O	1:A:177:GLU:C	2.44	0.55
1:A:200:ILE:HG22	1:A:200:ILE:O	2.07	0.54

*Continued on next page...*



*Continued from previous page...*

Atom-1	Atom-2	Interatomic distance (Å)	Clash overlap (Å)
1:A:257:ILE:CD1	1:A:328:ILE:CD1	2.86	0.53
1:A:107:SER:OG	1:A:109:GLU:HG2	2.08	0.53
1:A:200:ILE:HG21	1:A:203:LYS:HG2	1.91	0.53
2:B:19:PHE:CD1	2:B:245:ARG:HG3	2.44	0.52
1:A:129:VAL:HG13	1:A:140:PHE:CD2	2.44	0.52
2:B:106:TYR:CD1	2:B:138:ILE:HG23	2.45	0.51
1:A:33:LYS:HB3	1:A:60:ASP:OD2	2.08	0.51
1:A:166:THR:HG22	1:A:205:VAL:HG12	1.93	0.51
1:A:259:GLN:HG2	1:A:277:LYS:HE2	1.93	0.50
1:A:200:ILE:CB	1:A:203:LYS:HE3	2.41	0.50
1:A:317:GLN:HG3	2:B:137:ARG:HD2	1.92	0.50
1:A:33:LYS:HG2	1:A:60:ASP:CG	2.32	0.50
1:A:253:LYS:O	1:A:284:PRO:HD2	2.12	0.49
2:B:166:THR:HG22	2:B:205:VAL:HG12	1.93	0.49
1:A:155:LYS:O	1:A:156:LEU:C	2.51	0.49
1:A:299:LYS:HD2	1:A:346:ARG:NH2	2.27	0.49
1:A:357:GLU:O	1:A:361:MET:HG3	2.12	0.49
1:A:108:LEU:HD21	1:A:152:GLU:HG2	1.96	0.48
1:A:230:GLY:HA3	1:A:246:PRO:HA	1.96	0.47
1:A:257:ILE:HD12	1:A:328:ILE:HD12	1.96	0.47
1:A:261:GLU:O	1:A:264:VAL:HG13	2.14	0.47
2:B:253:LYS:O	2:B:284:PRO:HD2	2.15	0.47
2:B:357:GLU:O	2:B:361:MET:HG3	2.14	0.47
1:A:147:VAL:O	1:A:151:ILE:HG23	2.15	0.47
2:B:184:ASN:HA	2:B:184:ASN:HD22	1.60	0.47
1:A:200:ILE:HB	1:A:203:LYS:HE3	1.96	0.46
2:B:106:TYR:CZ	2:B:138:ILE:HD12	2.50	0.46
1:A:143:ASN:O	1:A:147:VAL:HG23	2.17	0.45
2:B:308:ASP:O	2:B:320:VAL:HG13	2.17	0.45
1:A:124:LYS:NZ	1:A:157:GLU:O	2.51	0.43
2:B:11:GLU:C	2:B:12:ILE:HD12	2.39	0.43
1:A:374:ASN:HB2	4:A:534:HOH:O	2.18	0.43
2:B:199:LYS:HB2	2:B:199:LYS:HE3	1.86	0.43
1:A:326:ILE:HD12	1:A:328:ILE:HG21	1.98	0.43
1:A:157:GLU:HG2	4:A:573:HOH:O	2.17	0.43
1:A:18:ARG:NH2	1:A:372:GLU:OE1	2.48	0.43
1:A:257:ILE:HD11	1:A:328:ILE:CD1	2.49	0.42
1:A:274:THR:HG23	1:A:278:GLU:CD	2.39	0.42
2:B:230:GLY:HA3	2:B:246:PRO:HA	2.01	0.42
1:A:208:SER:HB3	1:A:227:ILE:HG23	2.01	0.42
2:B:238:PHE:HB3	2:B:241:ARG:HG3	2.01	0.42

*Continued on next page...*

Continued from previous page...

Atom-1	Atom-2	Interatomic distance (Å)	Clash overlap (Å)
1:A:39:LYS:NZ	3:A:401:DCS:H4A1	2.35	0.41
1:A:259:GLN:HG2	1:A:277:LYS:CE	2.51	0.41
1:A:322:ILE:HG13	1:A:328:ILE:HD13	2.03	0.41
1:A:174:VAL:HG13	1:A:175:SER:N	2.35	0.41
1:A:32:ILE:HD13	1:A:218:ARG:HB3	2.02	0.41
1:A:380:ASN:ND2	4:A:529:HOH:O	2.54	0.41
1:A:257:ILE:HD12	1:A:328:ILE:CD1	2.49	0.41
1:A:145:GLU:O	1:A:149:GLU:HG3	2.22	0.40
2:B:157:GLU:O	2:B:158:TYR:HB2	2.21	0.40
1:A:200:ILE:HD12	1:A:203:LYS:HE3	2.03	0.40
2:B:218:ARG:NH2	4:B:527:HOH:O	2.54	0.40

There are no symmetry-related clashes.

## 5.3 Torsion angles [i](#)

### 5.3.1 Protein backbone [i](#)

In the following table, the Percentiles column shows the percent Ramachandran outliers of the chain as a percentile score with respect to all X-ray entries followed by that with respect to entries of similar resolution.

The Analysed column shows the number of residues for which the backbone conformation was analysed, and the total number of residues.

Mol	Chain	Analysed	Favoured	Allowed	Outliers	Percentiles	
1	A	371/385 (96%)	354 (95%)	14 (4%)	3 (1%)	24	21
2	B	359/385 (93%)	347 (97%)	12 (3%)	0	100	100
All	All	730/770 (95%)	701 (96%)	26 (4%)	3 (0%)	39	43

All (3) Ramachandran outliers are listed below:

Mol	Chain	Res	Type
1	A	157	GLU
1	A	196	ALA
1	A	58	LYS

### 5.3.2 Protein sidechains ⓘ

In the following table, the Percentiles column shows the percent sidechain outliers of the chain as a percentile score with respect to all X-ray entries followed by that with respect to entries of similar resolution.

The Analysed column shows the number of residues for which the sidechain conformation was analysed, and the total number of residues.

Mol	Chain	Analysed	Rotameric	Outliers	Percentiles	
1	A	326/334 (98%)	315 (97%)	11 (3%)	44	54
2	B	316/333 (95%)	304 (96%)	12 (4%)	40	49
All	All	642/667 (96%)	619 (96%)	23 (4%)	42	51

All (23) residues with a non-rotameric sidechain are listed below:

Mol	Chain	Res	Type
1	A	43	TYR
1	A	61	TYR
1	A	130	LYS
1	A	141	GLN
1	A	148	GLN
1	A	153	LEU
1	A	199	LYS
1	A	262	PRO
1	A	267	SER
1	A	329	LYS
1	A	369	VAL
2	B	12	ILE
2	B	61	TYR
2	B	109	GLU
2	B	120	SER
2	B	136	THR
2	B	153	LEU
2	B	175	SER
2	B	181	LYS
2	B	199	LYS
2	B	228	LEU
2	B	245	ARG
2	B	369	VAL

Some sidechains can be flipped to improve hydrogen bonding and reduce clashes. All (9) such sidechains are listed below:

Mol	Chain	Res	Type
1	A	76	ASN
1	A	141	GLN
1	A	182	GLN
1	A	317	GLN
1	A	380	ASN
2	B	76	ASN
2	B	115	ASN
2	B	184	ASN
2	B	256	HIS

### 5.3.3 RNA ⓘ

There are no RNA molecules in this entry.

## 5.4 Non-standard residues in protein, DNA, RNA chains ⓘ

1 non-standard protein/DNA/RNA residue is modelled in this entry.

In the following table, the Counts columns list the number of bonds (or angles) for which Mogul statistics could be retrieved, the number of bonds (or angles) that are observed in the model and the number of bonds (or angles) that are defined in the chemical component dictionary. The Link column lists molecule types, if any, to which the group is linked. The Z score for a bond length (or angle) is the number of standard deviations the observed value is removed from the expected value. A bond length (or angle) with  $|Z| > 2$  is considered an outlier worth inspection. RMSZ is the root-mean-square of all Z scores of the bond lengths (or angles).

Mol	Type	Chain	Res	Link	Bond lengths			Bond angles		
					Counts	RMSZ	$\# Z  > 2$	Counts	RMSZ	$\# Z  > 2$
2	KCX	B	130	2	7,11,12	0.39	0	7,12,14	1.05	1 (14%)

In the following table, the Chirals column lists the number of chiral outliers, the number of chiral centers analysed, the number of these observed in the model and the number defined in the chemical component dictionary. Similar counts are reported in the Torsion and Rings columns. '-' means no outliers of that kind were identified.

Mol	Type	Chain	Res	Link	Chirals	Torsions	Rings
2	KCX	B	130	2	-	0/6/10/12	0/0/0/0

There are no bond length outliers.

All (1) bond angle outliers are listed below:

Mol	Chain	Res	Type	Atoms	Z	Observed(°)	Ideal(°)
2	B	130	KCX	O-C-CA	-2.25	119.64	125.49

There are no chirality outliers.

There are no torsion outliers.

There are no ring outliers.

No monomer is involved in short contacts.

## 5.5 Carbohydrates [i](#)

There are no carbohydrates in this entry.

## 5.6 Ligand geometry [i](#)

2 ligands are modelled in this entry.

In the following table, the Counts columns list the number of bonds (or angles) for which Mogul statistics could be retrieved, the number of bonds (or angles) that are observed in the model and the number of bonds (or angles) that are defined in the chemical component dictionary. The Link column lists molecule types, if any, to which the group is linked. The Z score for a bond length (or angle) is the number of standard deviations the observed value is removed from the expected value. A bond length (or angle) with  $|Z| > 2$  is considered an outlier worth inspection. RMSZ is the root-mean-square of all Z scores of the bond lengths (or angles).

Mol	Type	Chain	Res	Link	Bond lengths			Bond angles		
					Counts	RMSZ	$\# Z  > 2$	Counts	RMSZ	$\# Z  > 2$
3	DCS	A	401	-	23,23,23	3.61	5 (21%)	24,33,33	1.91	5 (20%)
3	DCS	B	401	-	23,23,23	3.59	5 (21%)	24,33,33	1.74	7 (29%)

In the following table, the Chirals column lists the number of chiral outliers, the number of chiral centers analysed, the number of these observed in the model and the number defined in the chemical component dictionary. Similar counts are reported in the Torsion and Rings columns. '-' means no outliers of that kind were identified.

Mol	Type	Chain	Res	Link	Chirals	Torsions	Rings
3	DCS	A	401	-	-	0/10/21/21	0/2/2/2
3	DCS	B	401	-	-	0/10/21/21	0/2/2/2

All (10) bond length outliers are listed below:

Mol	Chain	Res	Type	Atoms	Z	Observed(Å)	Ideal(Å)
3	B	401	DCS	CA-C	-5.65	1.48	1.52
3	B	401	DCS	OG-ND	-5.37	1.33	1.45
3	A	401	DCS	OG-ND	-5.20	1.34	1.45
3	A	401	DCS	C4A-C4	2.01	1.54	1.51
3	B	401	DCS	C5-C4	5.81	1.48	1.40
3	A	401	DCS	C3-C4	6.60	1.50	1.40
3	B	401	DCS	C3-C4	6.62	1.50	1.40
3	A	401	DCS	C5-C4	6.91	1.50	1.40
3	B	401	DCS	C3-C2	12.34	1.49	1.40
3	A	401	DCS	C3-C2	12.99	1.49	1.40

All (12) bond angle outliers are listed below:

Mol	Chain	Res	Type	Atoms	Z	Observed(°)	Ideal(°)
3	A	401	DCS	C3-C4-C5	-3.63	115.00	118.82
3	B	401	DCS	C4A-C4-C5	-2.30	117.66	119.71
3	B	401	DCS	C3-C4-C5	-2.06	116.64	118.82
3	A	401	DCS	C6-N1-C2	2.05	123.47	119.28
3	B	401	DCS	O3P-P-O2P	2.19	115.71	107.38
3	B	401	DCS	C6-N1-C2	2.23	123.82	119.28
3	B	401	DCS	O-C-ND	2.64	128.81	125.49
3	A	401	DCS	CA-C-ND	3.10	109.52	107.45
3	B	401	DCS	CA-C-ND	3.43	109.74	107.45
3	A	401	DCS	C6-C5-C4	3.67	120.83	118.09
3	B	401	DCS	C4A-N-CA	3.90	119.77	113.81
3	A	401	DCS	C4A-N-CA	5.01	121.47	113.81

There are no chirality outliers.

There are no torsion outliers.

There are no ring outliers.

1 monomer is involved in 3 short contacts:

Mol	Chain	Res	Type	Clashes	Symm-Clashes
3	A	401	DCS	3	0

## 5.7 Other polymers ⓘ

There are no such residues in this entry.

## 5.8 Polymer linkage issues ⓘ

There are no chain breaks in this entry.

## 6 Fit of model and data [i](#)

### 6.1 Protein, DNA and RNA chains [i](#)

In the following table, the column labelled ‘#RSRZ> 2’ contains the number (and percentage) of RSRZ outliers, followed by percent RSRZ outliers for the chain as percentile scores relative to all X-ray entries and entries of similar resolution. The OWAB column contains the minimum, median, 95<sup>th</sup> percentile and maximum values of the occupancy-weighted average B-factor per residue. The column labelled ‘Q< 0.9’ lists the number of (and percentage) of residues with an average occupancy less than 0.9.

Mol	Chain	Analysed	<RSRZ>	#RSRZ>2	OWAB(Å <sup>2</sup> )	Q<0.9
1	A	375/385 (97%)	-0.00	11 (2%) 55 60	16, 30, 56, 72	0
2	B	363/385 (94%)	-0.01	7 (1%) 70 74	16, 32, 52, 74	0
All	All	738/770 (95%)	-0.00	18 (2%) 62 66	16, 31, 55, 74	0

All (18) RSRZ outliers are listed below:

Mol	Chain	Res	Type	RSRZ
2	B	325	ASP	4.0
2	B	326	ILE	3.6
1	A	148	GLN	3.4
2	B	197	GLY	3.2
1	A	195	GLU	2.9
2	B	327	ASP	2.7
1	A	155	LYS	2.6
1	A	106	TYR	2.3
2	B	157	GLU	2.3
1	A	109	GLU	2.3
1	A	157	GLU	2.3
2	B	330	VAL	2.3
2	B	30	GLU	2.3
1	A	112	GLN	2.2
1	A	196	ALA	2.2
1	A	327	ASP	2.1
1	A	325	ASP	2.1
1	A	156	LEU	2.0

### 6.2 Non-standard residues in protein, DNA, RNA chains [i](#)

In the following table, the Atoms column lists the number of modelled atoms in the group and the number defined in the chemical component dictionary. LLDF column lists the quality of electron density of the group with respect to its neighbouring residues in protein, DNA or RNA chains.



The B-factors column lists the minimum, median, 95<sup>th</sup> percentile and maximum values of B factors of atoms in the group. The column labelled 'Q< 0.9' lists the number of atoms with occupancy less than 0.9.

Mol	Type	Chain	Res	Atoms	RSCC	RSR	LLDF	B-factors(Å <sup>2</sup> )	Q<0.9
2	KCX	B	130	12/13	0.94	0.14	-	29,33,40,60	0

### 6.3 Carbohydrates [i](#)

There are no carbohydrates in this entry.

### 6.4 Ligands [i](#)

In the following table, the Atoms column lists the number of modelled atoms in the group and the number defined in the chemical component dictionary. LLDF column lists the quality of electron density of the group with respect to its neighbouring residues in protein, DNA or RNA chains. The B-factors column lists the minimum, median, 95<sup>th</sup> percentile and maximum values of B factors of atoms in the group. The column labelled 'Q< 0.9' lists the number of atoms with occupancy less than 0.9.

Mol	Type	Chain	Res	Atoms	RSCC	RSR	LLDF	B-factors(Å <sup>2</sup> )	Q<0.9
3	DCS	A	401	22/22	0.96	0.15	0.55	19,38,60,65	0
3	DCS	B	401	22/22	0.98	0.12	-0.45	17,24,43,57	0

### 6.5 Other polymers [i](#)

There are no such residues in this entry.