



# Full wwPDB X-ray Structure Validation Report ⓘ

Feb 1, 2016 – 06:31 PM GMT

PDB ID : 4LV7  
Title : Crystal structure of inositol 1,3,4,5,6-pentakisphosphate 2-kinase E82C/S142C  
Authors : Gosein, V.; Miller, G.J.  
Deposited on : 2013-07-26  
Resolution : 2.60 Å(reported)

This is a Full wwPDB X-ray Structure Validation Report for a publicly released PDB entry.  
We welcome your comments at [validation@mail.wwpdb.org](mailto:validation@mail.wwpdb.org)  
A user guide is available at  
<http://wwpdb.org/validation/2016/XrayValidationReportHelp>  
with specific help available everywhere you see the ⓘ symbol.

---

The following versions of software and data (see [references ⓘ](#)) were used in the production of this report:

MolProbity : 4.02b-467  
Mogul : 1.7 (RC4), CSD as536be (2015)  
Xtriage (Phenix) : 1.9-1692  
EDS : rb-20026688  
Percentile statistics : 20151230.v01 (using entries in the PDB archive December 30th 2015)  
Refmac : 5.8.0135  
CCP4 : 6.5.0  
Ideal geometry (proteins) : Engh & Huber (2001)  
Ideal geometry (DNA, RNA) : Parkinson et al. (1996)  
Validation Pipeline (wwPDB-VP) : trunk26865

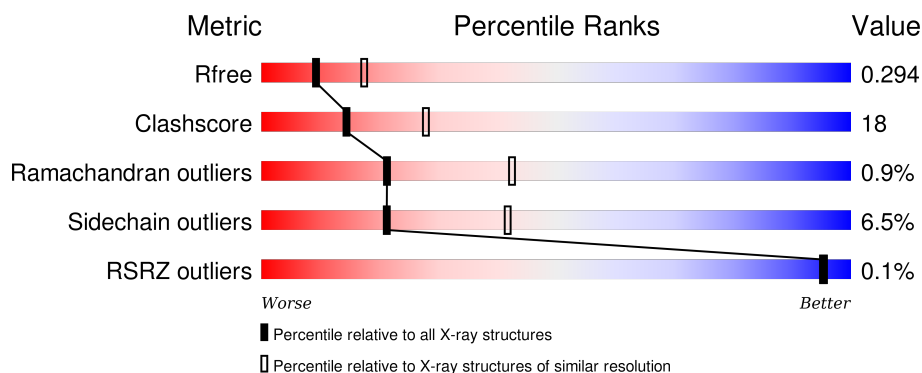
# 1 Overall quality at a glance

The following experimental techniques were used to determine the structure:

## *X-RAY DIFFRACTION*

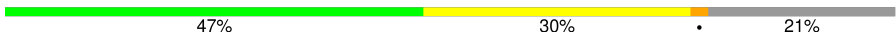

The reported resolution of this entry is 2.60 Å.

Percentile scores (ranging between 0-100) for global validation metrics of the entry are shown in the following graphic. The table shows the number of entries on which the scores are based.



Metric	Whole archive (#Entries)	Similar resolution (#Entries, resolution range(Å))
$R_{free}$	91344	2328 (2.60-2.60)
Clashscore	102246	2679 (2.60-2.60)
Ramachandran outliers	100387	2635 (2.60-2.60)
Sidechain outliers	100360	2635 (2.60-2.60)
RSRZ outliers	91569	2334 (2.60-2.60)

The table below summarises the geometric issues observed across the polymeric chains and their fit to the electron density. The red, orange, yellow and green segments on the lower bar indicate the fraction of residues that contain outliers for  $\geq 3$ , 2, 1 and 0 types of geometric quality criteria. A grey segment represents the fraction of residues that are not modelled. The numeric value for each fraction is indicated below the corresponding segment, with a dot representing fractions  $\leq 5\%$ . The upper red bar (where present) indicates the fraction of residues that have poor fit to the electron density. The numeric value is given above the bar.

Mol	Chain	Length	Quality of chain
1	A	493	
1	B	493	

The following table lists non-polymeric compounds, carbohydrate monomers and non-standard residues in protein, DNA, RNA chains that are outliers for geometric or electron-density-fit criteria:

Mol	Type	Chain	Res	Chirality	Geometry	Clashes	Electron density
3	ADP	A	502	-	-	-	X

## 2 Entry composition

There are 5 unique types of molecules in this entry. The entry contains 6380 atoms, of which 0 are hydrogens and 0 are deuteriums.

In the tables below, the ZeroOcc column contains the number of atoms modelled with zero occupancy, the AltConf column contains the number of residues with at least one atom in alternate conformation and the Trace column contains the number of residues modelled with at most 2 atoms.

- Molecule 1 is a protein called Inositol-pentakisphosphate 2-kinase.

Mol	Chain	Residues	Atoms					ZeroOcc	AltConf	Trace
1	A	390	Total	C	N	O	S	0	0	0
			3114	1992	526	582	14			
1	B	394	Total	C	N	O	S	0	0	0
			3136	2003	528	591	14			

There are 106 discrepancies between the modelled and reference sequences:

Chain	Residue	Modelled	Actual	Comment	Reference
A	-33	MET	-	INITIATING METHIONINE	UNP Q93YN9
A	-32	GLY	-	EXPRESSION TAG	UNP Q93YN9
A	-31	SER	-	EXPRESSION TAG	UNP Q93YN9
A	-30	SER	-	EXPRESSION TAG	UNP Q93YN9
A	-29	HIS	-	EXPRESSION TAG	UNP Q93YN9
A	-28	HIS	-	EXPRESSION TAG	UNP Q93YN9
A	-27	HIS	-	EXPRESSION TAG	UNP Q93YN9
A	-26	HIS	-	EXPRESSION TAG	UNP Q93YN9
A	-25	HIS	-	EXPRESSION TAG	UNP Q93YN9
A	-24	HIS	-	EXPRESSION TAG	UNP Q93YN9
A	-23	SER	-	EXPRESSION TAG	UNP Q93YN9
A	-22	SER	-	EXPRESSION TAG	UNP Q93YN9
A	-21	GLY	-	EXPRESSION TAG	UNP Q93YN9
A	-20	LEU	-	EXPRESSION TAG	UNP Q93YN9
A	-19	VAL	-	EXPRESSION TAG	UNP Q93YN9
A	-18	PRO	-	EXPRESSION TAG	UNP Q93YN9
A	-17	ARG	-	EXPRESSION TAG	UNP Q93YN9
A	-16	GLY	-	EXPRESSION TAG	UNP Q93YN9
A	-15	SER	-	EXPRESSION TAG	UNP Q93YN9
A	-14	HIS	-	EXPRESSION TAG	UNP Q93YN9
A	-13	MET	-	EXPRESSION TAG	UNP Q93YN9
A	-12	ALA	-	EXPRESSION TAG	UNP Q93YN9
A	-11	SER	-	EXPRESSION TAG	UNP Q93YN9
A	-10	MET	-	EXPRESSION TAG	UNP Q93YN9
A	-9	THR	-	EXPRESSION TAG	UNP Q93YN9

*Continued on next page...*

*Continued from previous page...*

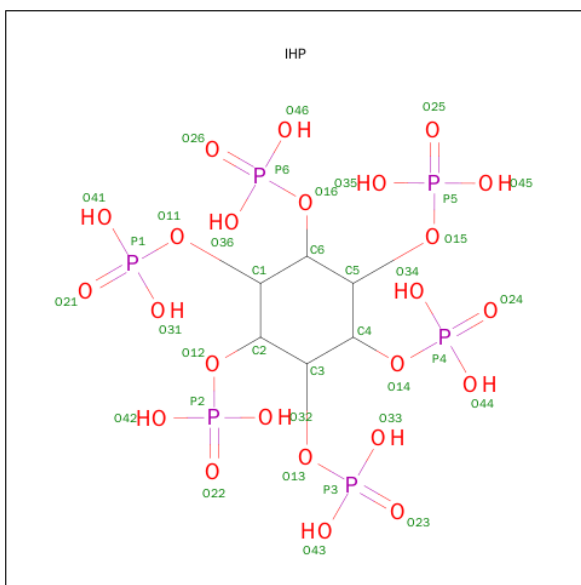
Chain	Residue	Modelled	Actual	Comment	Reference
A	-8	GLY	-	EXPRESSION TAG	UNP Q93YN9
A	-7	GLY	-	EXPRESSION TAG	UNP Q93YN9
A	-6	GLN	-	EXPRESSION TAG	UNP Q93YN9
A	-5	GLN	-	EXPRESSION TAG	UNP Q93YN9
A	-4	MET	-	EXPRESSION TAG	UNP Q93YN9
A	-3	GLY	-	EXPRESSION TAG	UNP Q93YN9
A	-2	ARG	-	EXPRESSION TAG	UNP Q93YN9
A	-1	ILE	-	EXPRESSION TAG	UNP Q93YN9
A	0	LEU	-	EXPRESSION TAG	UNP Q93YN9
A	54	SER	ALA	CONFLICT	UNP Q93YN9
A	82	CYS	GLU	ENGINEERED MUTATION	UNP Q93YN9
A	90	GLN	LYS	CONFLICT	UNP Q93YN9
A	142	CYS	SER	ENGINEERED MUTATION	UNP Q93YN9
A	157	THR	SER	CONFLICT	UNP Q93YN9
A	185	ILE	MET	CONFLICT	UNP Q93YN9
A	204	ILE	ASN	CONFLICT	UNP Q93YN9
A	224	ARG	SER	CONFLICT	UNP Q93YN9
A	321	CYS	SER	CONFLICT	UNP Q93YN9
A	325	ILE	LEU	CONFLICT	UNP Q93YN9
A	337	ARG	LYS	CONFLICT	UNP Q93YN9
A	452	ASP	-	EXPRESSION TAG	UNP Q93YN9
A	453	TYR	-	EXPRESSION TAG	UNP Q93YN9
A	454	LYS	-	EXPRESSION TAG	UNP Q93YN9
A	455	ASP	-	EXPRESSION TAG	UNP Q93YN9
A	456	ASP	-	EXPRESSION TAG	UNP Q93YN9
A	457	ASP	-	EXPRESSION TAG	UNP Q93YN9
A	458	ASP	-	EXPRESSION TAG	UNP Q93YN9
A	459	LYS	-	EXPRESSION TAG	UNP Q93YN9
B	-33	MET	-	INITIATING METHIONINE	UNP Q93YN9
B	-32	GLY	-	EXPRESSION TAG	UNP Q93YN9
B	-31	SER	-	EXPRESSION TAG	UNP Q93YN9
B	-30	SER	-	EXPRESSION TAG	UNP Q93YN9
B	-29	HIS	-	EXPRESSION TAG	UNP Q93YN9
B	-28	HIS	-	EXPRESSION TAG	UNP Q93YN9
B	-27	HIS	-	EXPRESSION TAG	UNP Q93YN9
B	-26	HIS	-	EXPRESSION TAG	UNP Q93YN9
B	-25	HIS	-	EXPRESSION TAG	UNP Q93YN9
B	-24	HIS	-	EXPRESSION TAG	UNP Q93YN9
B	-23	SER	-	EXPRESSION TAG	UNP Q93YN9
B	-22	SER	-	EXPRESSION TAG	UNP Q93YN9
B	-21	GLY	-	EXPRESSION TAG	UNP Q93YN9
B	-20	LEU	-	EXPRESSION TAG	UNP Q93YN9

*Continued on next page...*

*Continued from previous page...*

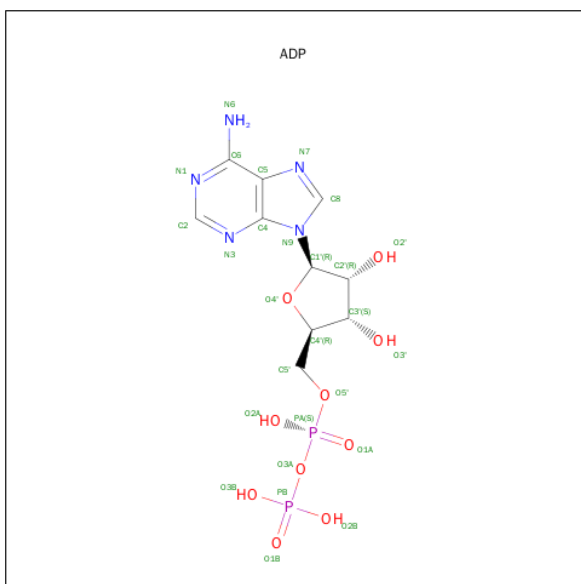
Chain	Residue	Modelled	Actual	Comment	Reference
B	-19	VAL	-	EXPRESSION TAG	UNP Q93YN9
B	-18	PRO	-	EXPRESSION TAG	UNP Q93YN9
B	-17	ARG	-	EXPRESSION TAG	UNP Q93YN9
B	-16	GLY	-	EXPRESSION TAG	UNP Q93YN9
B	-15	SER	-	EXPRESSION TAG	UNP Q93YN9
B	-14	HIS	-	EXPRESSION TAG	UNP Q93YN9
B	-13	MET	-	EXPRESSION TAG	UNP Q93YN9
B	-12	ALA	-	EXPRESSION TAG	UNP Q93YN9
B	-11	SER	-	EXPRESSION TAG	UNP Q93YN9
B	-10	MET	-	EXPRESSION TAG	UNP Q93YN9
B	-9	THR	-	EXPRESSION TAG	UNP Q93YN9
B	-8	GLY	-	EXPRESSION TAG	UNP Q93YN9
B	-7	GLY	-	EXPRESSION TAG	UNP Q93YN9
B	-6	GLN	-	EXPRESSION TAG	UNP Q93YN9
B	-5	GLN	-	EXPRESSION TAG	UNP Q93YN9
B	-4	MET	-	EXPRESSION TAG	UNP Q93YN9
B	-3	GLY	-	EXPRESSION TAG	UNP Q93YN9
B	-2	ARG	-	EXPRESSION TAG	UNP Q93YN9
B	-1	ILE	-	EXPRESSION TAG	UNP Q93YN9
B	0	LEU	-	EXPRESSION TAG	UNP Q93YN9
B	54	SER	ALA	CONFLICT	UNP Q93YN9
B	82	CYS	GLU	ENGINEERED MUTATION	UNP Q93YN9
B	90	GLN	LYS	CONFLICT	UNP Q93YN9
B	142	CYS	SER	ENGINEERED MUTATION	UNP Q93YN9
B	157	THR	SER	CONFLICT	UNP Q93YN9
B	185	ILE	MET	CONFLICT	UNP Q93YN9
B	204	ILE	ASN	CONFLICT	UNP Q93YN9
B	224	ARG	SER	CONFLICT	UNP Q93YN9
B	321	CYS	SER	CONFLICT	UNP Q93YN9
B	325	ILE	LEU	CONFLICT	UNP Q93YN9
B	337	ARG	LYS	CONFLICT	UNP Q93YN9
B	452	ASP	-	EXPRESSION TAG	UNP Q93YN9
B	453	TYR	-	EXPRESSION TAG	UNP Q93YN9
B	454	LYS	-	EXPRESSION TAG	UNP Q93YN9
B	455	ASP	-	EXPRESSION TAG	UNP Q93YN9
B	456	ASP	-	EXPRESSION TAG	UNP Q93YN9
B	457	ASP	-	EXPRESSION TAG	UNP Q93YN9
B	458	ASP	-	EXPRESSION TAG	UNP Q93YN9
B	459	LYS	-	EXPRESSION TAG	UNP Q93YN9

- Molecule 2 is INOSITOL HEXAKISPHOSPHATE (three-letter code: IHP) (formula:  $C_6H_{18}O_{24}P_6$ ).



Mol	Chain	Residues	Atoms				ZeroOcc	AltConf
2	A	1	Total 36	C 6	O 24	P 6	0	0
2	B	1	Total 36	C 6	O 24	P 6	0	0

- Molecule 3 is ADENOSINE-5'-DIPHOSPHATE (three-letter code: ADP) (formula:  $\text{C}_{10}\text{H}_{15}\text{N}_5\text{O}_{10}\text{P}_2$ ).



Mol	Chain	Residues	Atoms					ZeroOcc	AltConf
3	A	1	Total	C	N	O	P	0	0
			27	10	5	10	2		

*Continued on next page...*

*Continued from previous page...*

Mol	Chain	Residues	Atoms					ZeroOcc	AltConf
3	B	1	Total	C	N	O	P	0	0
			27	10	5	10	2		

- Molecule 4 is MAGNESIUM ION (three-letter code: MG) (formula: Mg).

Mol	Chain	Residues	Atoms		ZeroOcc	AltConf
4	B	1	Total	Mg	0	0
			1	1		
4	A	1	Total	Mg	0	0
			1	1		

- Molecule 5 is ZINC ION (three-letter code: ZN) (formula: Zn).

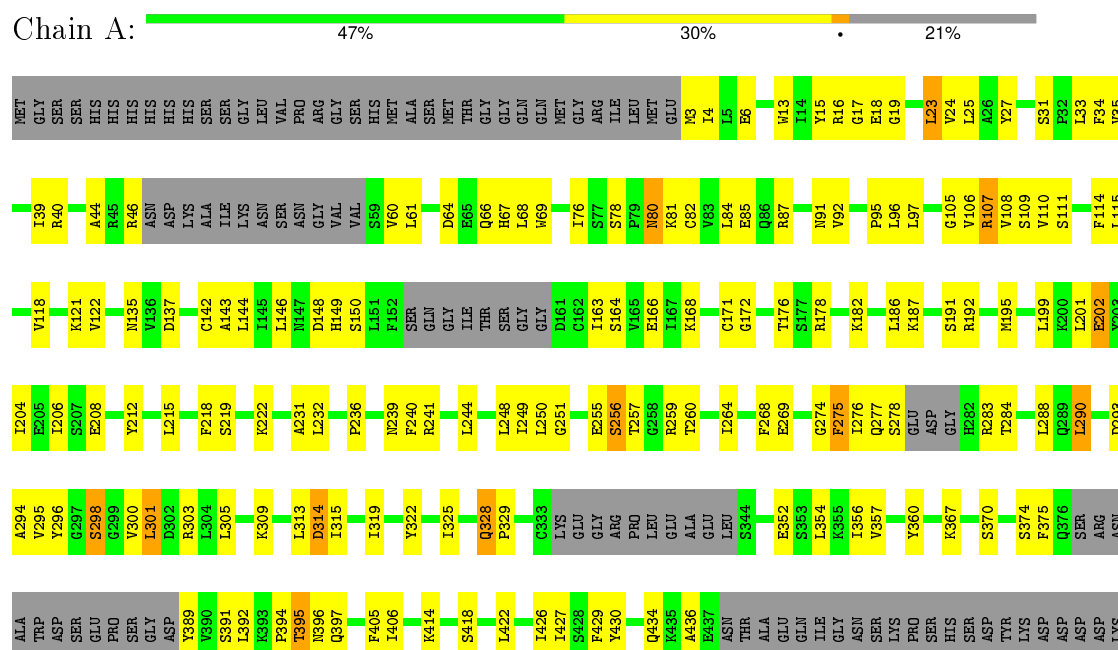
Mol	Chain	Residues	Atoms		ZeroOcc	AltConf
5	B	1	Total	Zn	0	0
			1	1		
5	A	1	Total	Zn	0	0
			1	1		



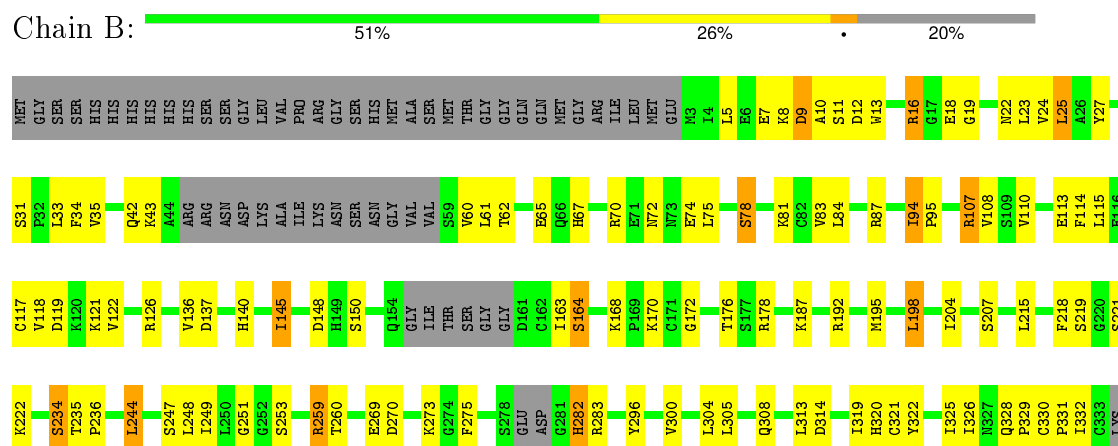
### 3 Residue-property plots

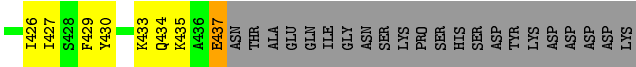
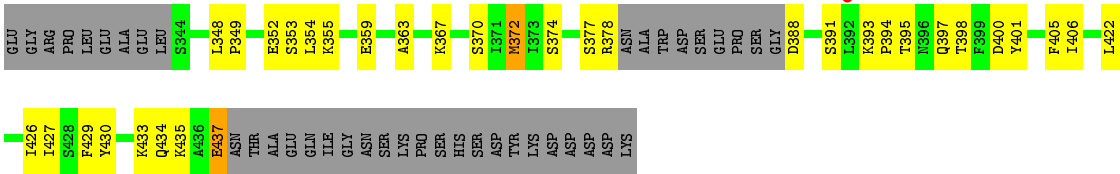
These plots are drawn for all protein, RNA and DNA chains in the entry. The first graphic for a chain summarises the proportions of errors displayed in the second graphic. The second graphic shows the sequence view annotated by issues in geometry and electron density. Residues are color-coded according to the number of geometric quality criteria for which they contain at least one outlier: green = 0, yellow = 1, orange = 2 and red = 3 or more. A red dot above a residue indicates a poor fit to the electron density ( $RSRZ > 2$ ). Stretches of 2 or more consecutive residues without any outlier are shown as a green connector. Residues present in the sample, but not in the model, are shown in grey.

#### • Molecule 1: Inositol-pentakisphosphate 2-kinase



#### • Molecule 1: Inositol-pentakisphosphate 2-kinase





## 4 Data and refinement statistics

Property	Value	Source
Space group	P 1	Depositor
Cell constants a, b, c, $\alpha$ , $\beta$ , $\gamma$	59.76Å 59.35Å 82.23Å 83.01° 89.92° 63.41°	Depositor
Resolution (Å)	34.55 – 2.60 34.55 – 2.50	Depositor EDS
% Data completeness (in resolution range)	93.4 (34.55-2.60) 72.9 (34.55-2.50)	Depositor EDS
$R_{merge}$	0.10	Depositor
$R_{sym}$	(Not available)	Depositor
$\langle I/\sigma(I) \rangle$ <sup>1</sup>	3.39 (at 2.51Å)	Xtriage
Refinement program	PHENIX (phenix.refine: 1.6.3_473)	Depositor
R, $R_{free}$	0.224 , 0.294 0.223 , 0.294	Depositor DCC
$R_{free}$ test set	1821 reflections (6.74%)	DCC
Wilson B-factor (Å <sup>2</sup> )	30.8	Xtriage
Anisotropy	0.113	Xtriage
Bulk solvent $k_{sol}$ (e/Å <sup>3</sup> ), $B_{sol}$ (Å <sup>2</sup> )	(Not available) , (Not available)	EDS
Estimated twinning fraction	No twinning to report.	Xtriage
L-test for twinning <sup>2</sup>	$\langle  L  \rangle = 0.49$ , $\langle L^2 \rangle = 0.31$	Xtriage
Outliers	0 of 32955 reflections	Xtriage
$F_o, F_c$ correlation	0.91	EDS
Total number of atoms	6380	wwPDB-VP
Average B, all atoms (Å <sup>2</sup> )	32.0	wwPDB-VP

Xtriage's analysis on translational NCS is as follows: *The largest off-origin peak in the Patterson function is 5.91% of the height of the origin peak. No significant pseudotranslation is detected.*

<sup>1</sup>Intensities estimated from amplitudes.

<sup>2</sup>Theoretical values of  $\langle |L| \rangle$ ,  $\langle L^2 \rangle$  for acentric reflections are 0.5, 0.375 respectively for untwinned datasets, and 0.333, 0.2 for perfectly twinned datasets.

## 5 Model quality

### 5.1 Standard geometry

Bond lengths and bond angles in the following residue types are not validated in this section: MG, IHP, ZN, ADP

The Z score for a bond length (or angle) is the number of standard deviations the observed value is removed from the expected value. A bond length (or angle) with  $|Z| > 5$  is considered an outlier worth inspection. RMSZ is the root-mean-square of all Z scores of the bond lengths (or angles).

Mol	Chain	Bond lengths		Bond angles	
		RMSZ	# Z  >5	RMSZ	# Z  >5
1	A	0.44	0/3170	0.60	0/4271
1	B	0.45	0/3192	0.58	0/4301
All	All	0.45	0/6362	0.59	0/8572

There are no bond length outliers.

There are no bond angle outliers.

There are no chirality outliers.

There are no planarity outliers.

### 5.2 Too-close contacts

In the following table, the Non-H and H(model) columns list the number of non-hydrogen atoms and hydrogen atoms in the chain respectively. The H(added) column lists the number of hydrogen atoms added and optimized by MolProbity. The Clashes column lists the number of clashes within the asymmetric unit, whereas Symm-Clashes lists symmetry related clashes.

Mol	Chain	Non-H	H(model)	H(added)	Clashes	Symm-Clashes
1	A	3114	0	3150	119	0
1	B	3136	0	3162	110	0
2	A	36	0	6	0	0
2	B	36	0	6	0	0
3	A	27	0	12	3	0
3	B	27	0	12	1	0
4	A	1	0	0	0	0
4	B	1	0	0	0	0
5	A	1	0	0	0	0
5	B	1	0	0	0	0
All	All	6380	0	6348	229	0

The all-atom clashscore is defined as the number of clashes found per 1000 atoms (including hydrogen atoms). The all-atom clashscore for this structure is 18.

All (229) close contacts within the same asymmetric unit are listed below, sorted by their clash magnitude.

Atom-1	Atom-2	Interatomic distance (Å)	Clash overlap (Å)
1:A:82:CYS:HB2	1:A:107:ARG:HE	0.99	1.07
1:A:107:ARG:HH11	1:A:107:ARG:HG3	1.18	1.04
1:A:82:CYS:HB2	1:A:107:ARG:NE	1.76	1.01
1:B:107:ARG:HG3	1:B:107:ARG:HH11	1.32	0.93
1:A:275:PHE:HD1	1:A:276:ILE:HD12	1.40	0.87
1:A:422:LEU:O	1:A:426:ILE:HG12	1.78	0.83
1:A:107:ARG:NH2	1:A:142:CYS:SG	2.51	0.83
1:B:5:LEU:HB2	1:B:110:VAL:HG12	1.60	0.83
1:A:107:ARG:NH1	1:A:107:ARG:HG3	1.93	0.80
1:B:150:SER:HA	1:B:164:SER:OG	1.82	0.79
1:B:187:LYS:HG3	1:B:427:ILE:HD13	1.65	0.78
1:A:187:LYS:HA	1:A:195:MET:HE1	1.64	0.78
1:A:82:CYS:CB	1:A:107:ARG:HE	1.89	0.77
1:B:172:GLY:HA3	1:B:218:PHE:CD2	2.20	0.77
1:B:355:LYS:O	1:B:359:GLU:HG3	1.85	0.76
1:A:275:PHE:CD1	1:A:276:ILE:HD12	2.20	0.76
1:B:27:TYR:CD2	1:B:34:PHE:HB2	2.20	0.75
1:B:74:GLU:HG2	1:B:75:LEU:N	2.04	0.73
1:B:248:LEU:HD21	1:B:251:GLY:O	1.89	0.73
1:A:31:SER:O	1:A:35:VAL:HG23	1.91	0.71
1:B:31:SER:O	1:B:35:VAL:HG23	1.91	0.71
1:B:107:ARG:CG	1:B:107:ARG:HH11	2.04	0.70
1:A:80:ASN:OD1	1:A:107:ARG:NH2	2.25	0.69
1:B:150:SER:HA	1:B:164:SER:HG	1.55	0.69
1:A:260:THR:HG23	1:A:264:ILE:CG2	2.22	0.69
1:B:244:LEU:HB2	1:B:249:ILE:HD13	1.75	0.69
1:A:204:ILE:O	1:A:204:ILE:HG22	1.91	0.68
1:B:273:LYS:HA	1:B:283:ARG:NH1	2.08	0.68
1:B:18:GLU:OE1	1:B:126:ARG:HD2	1.93	0.68
1:A:110:VAL:HG21	1:A:115:LEU:HD21	1.75	0.67
1:A:395:THR:OG1	1:A:397:GLN:HG3	1.94	0.67
1:B:325:ILE:HD12	1:B:354:LEU:HD23	1.77	0.66
1:B:269:GLU:OE2	1:B:283:ARG:HB2	1.96	0.66
1:A:66:GLN:HA	1:A:76:ILE:HD12	1.78	0.65
1:A:178:ARG:HH11	1:A:178:ARG:HG3	1.61	0.65
1:A:15:TYR:CZ	1:A:17:GLY:HA2	2.31	0.65
1:B:326:ILE:HG13	1:B:328:GLN:HG3	1.77	0.65

*Continued on next page...*

*Continued from previous page...*

Atom-1	Atom-2	Interatomic distance (Å)	Clash overlap (Å)
1:A:255:GLU:HG3	1:A:256:SER:O	1.96	0.65
1:A:172:GLY:HA3	1:A:218:PHE:CD2	2.32	0.64
1:B:108:VAL:HG11	1:B:145:ILE:HD12	1.78	0.64
1:B:222:LYS:HB3	1:B:296:TYR:CZ	2.31	0.64
1:B:282:HIS:N	1:B:282:HIS:CD2	2.65	0.64
1:B:422:LEU:O	1:B:426:ILE:HG12	1.97	0.64
1:A:13:TRP:O	1:A:121:LYS:HE2	1.97	0.64
1:B:325:ILE:HD12	1:B:354:LEU:CD2	2.28	0.64
1:B:429:PHE:CZ	1:B:433:LYS:HD2	2.32	0.64
1:B:430:TYR:O	1:B:434:GLN:HG2	1.98	0.64
1:B:235:THR:HG22	1:B:259:ARG:HB2	1.80	0.63
1:A:325:ILE:HD11	1:A:354:LEU:HA	1.81	0.63
1:B:348:LEU:HD22	1:B:352:GLU:HG2	1.79	0.62
1:B:378:ARG:HD2	1:B:400:ASP:OD1	1.98	0.62
1:A:222:LYS:NZ	1:A:293:ASP:HA	2.14	0.62
1:B:374:SER:O	1:B:401:TYR:HA	2.00	0.62
1:A:260:THR:HG23	1:A:264:ILE:HG22	1.81	0.62
1:A:106:VAL:HG12	1:A:107:ARG:N	2.14	0.61
1:A:107:ARG:NH1	1:A:107:ARG:CG	2.59	0.61
1:B:12:ASP:HB3	1:B:27:TYR:CE1	2.36	0.61
1:A:19:GLY:HA3	3:A:502:ADP:O2B	2.01	0.61
1:A:430:TYR:O	1:A:434:GLN:HG2	2.01	0.60
1:B:300:VAL:HG22	1:B:405:PHE:CZ	2.37	0.60
1:B:304:LEU:O	1:B:308:GLN:HG3	2.01	0.60
1:B:273:LYS:HA	1:B:283:ARG:CZ	2.32	0.59
1:A:149:HIS:O	1:A:374:SER:OG	2.21	0.59
1:B:12:ASP:HB3	1:B:27:TYR:HE1	1.66	0.58
1:B:363:ALA:O	1:B:367:LYS:HG3	2.03	0.58
1:A:69:TRP:HB2	1:A:76:ILE:HD11	1.84	0.58
1:A:46:ARG:HH21	1:A:135:ASN:CG	2.06	0.57
1:A:66:GLN:HA	1:A:76:ILE:CD1	2.34	0.57
1:B:62:THR:OG1	1:B:65:GLU:HG3	2.04	0.57
1:A:18:GLU:HB3	1:A:23:LEU:HD12	1.86	0.57
1:B:94:ILE:HG22	1:B:95:PRO:HD3	1.86	0.57
1:A:215:LEU:O	1:A:219:SER:HB3	2.05	0.57
1:A:3:MET:CE	1:A:33:LEU:HD13	2.35	0.57
1:B:378:ARG:HD3	1:B:398:THR:HG22	1.87	0.56
1:B:218:PHE:CD1	1:B:305:LEU:HD13	2.41	0.56
1:B:107:ARG:HG3	1:B:107:ARG:NH1	2.13	0.56
1:B:215:LEU:O	1:B:219:SER:HB3	2.06	0.55
1:A:44:ALA:HB2	1:A:137:ASP:HB2	1.89	0.55

*Continued on next page...*

*Continued from previous page...*

Atom-1	Atom-2	Interatomic distance (Å)	Clash overlap (Å)
1:B:67:HIS:O	1:B:70:ARG:HD3	2.06	0.55
1:A:106:VAL:CG1	1:A:107:ARG:N	2.70	0.55
1:A:202:GLU:HG2	1:A:429:PHE:CZ	2.41	0.55
1:B:23:LEU:HD21	1:B:122:VAL:HG21	1.89	0.54
1:A:276:ILE:HG22	1:A:283:ARG:HG2	1.89	0.54
1:B:319:ILE:O	1:B:322:TYR:HB3	2.08	0.54
1:A:275:PHE:HD1	1:A:276:ILE:CD1	2.15	0.54
1:B:74:GLU:HG2	1:B:75:LEU:H	1.73	0.54
1:B:83:VAL:HG12	1:B:87:ARG:HD2	1.89	0.54
1:A:352:GLU:O	1:A:356:ILE:HG13	2.08	0.54
1:B:27:TYR:CE2	1:B:34:PHE:HB2	2.43	0.53
1:A:40:ARG:NH1	1:A:85:GLU:OE2	2.42	0.53
1:B:195:MET:HG2	1:B:430:TYR:CD1	2.43	0.53
1:B:72:ASN:HB3	1:B:74:GLU:OE2	2.10	0.52
1:A:81:LYS:O	1:A:84:LEU:HB3	2.10	0.52
1:A:232:LEU:HB3	1:A:240:PHE:CD1	2.44	0.52
1:B:114:PHE:O	1:B:118:VAL:HG23	2.10	0.52
1:A:60:VAL:HG11	1:A:78:SER:O	2.10	0.51
1:A:222:LYS:HZ1	1:A:293:ASP:HA	1.75	0.51
1:A:319:ILE:O	1:A:322:TYR:HB3	2.10	0.51
1:A:222:LYS:HA	1:A:296:TYR:CD1	2.45	0.51
1:A:290:LEU:O	1:A:290:LEU:HD12	2.11	0.51
1:A:199:LEU:HD22	1:A:426:ILE:HD13	1.93	0.51
1:A:296:TYR:CD2	1:A:296:TYR:C	2.84	0.51
1:A:300:VAL:HG22	1:A:405:PHE:CZ	2.46	0.51
1:A:187:LYS:HG3	1:A:427:ILE:HD13	1.92	0.51
1:B:107:ARG:CG	1:B:107:ARG:NH1	2.67	0.50
1:A:13:TRP:HB3	1:A:25:LEU:HB3	1.93	0.50
1:B:7:GLU:HB2	1:B:113:GLU:HB3	1.92	0.50
1:B:74:GLU:CG	1:B:75:LEU:N	2.74	0.50
1:A:328:GLN:HG2	1:A:329:PRO:HD2	1.94	0.50
1:B:22:ASN:ND2	1:B:42:GLN:HG3	2.26	0.50
1:A:300:VAL:HG23	1:A:303:ARG:HH22	1.76	0.50
1:A:168:LYS:HB3	1:A:239:ASN:HA	1.93	0.50
1:A:25:LEU:HB2	1:A:39:ILE:HG22	1.94	0.50
1:A:15:TYR:CE2	1:A:17:GLY:HA2	2.48	0.49
1:B:393:LYS:NZ	1:B:393:LYS:HB3	2.27	0.49
1:B:329:PRO:O	1:B:331:PRO:HD3	2.13	0.49
1:A:325:ILE:HD12	1:A:357:VAL:HG21	1.95	0.49
1:A:248:LEU:HD11	1:A:250:LEU:O	2.12	0.49
1:A:178:ARG:HH11	1:A:178:ARG:CG	2.24	0.49

*Continued on next page...*

*Continued from previous page...*

Atom-1	Atom-2	Interatomic distance (Å)	Clash overlap (Å)
1:B:25:LEU:HD21	1:B:118:VAL:CG1	2.42	0.49
1:A:4:ILE:HG12	1:A:109:SER:HB2	1.94	0.49
1:A:315:ILE:HB	1:A:360:TYR:OH	2.13	0.48
1:A:3:MET:HE3	1:A:33:LEU:HD13	1.95	0.48
1:A:269:GLU:OE2	1:A:283:ARG:HB2	2.13	0.48
1:B:325:ILE:CD1	1:B:354:LEU:HD23	2.43	0.48
1:B:435:LYS:C	1:B:437:GLU:H	2.16	0.48
1:B:321:CYS:O	1:B:325:ILE:HG12	2.13	0.48
1:A:96:LEU:N	1:A:96:LEU:CD1	2.77	0.48
1:B:395:THR:HB	1:B:397:GLN:HG3	1.95	0.48
1:B:163:ILE:CD1	1:B:244:LEU:HG	2.43	0.48
1:A:305:LEU:O	1:A:309:LYS:HG3	2.13	0.48
1:A:212:TYR:N	1:A:231:ALA:HB1	2.29	0.48
1:A:107:ARG:CZ	1:A:142:CYS:HB2	2.43	0.47
1:A:61:LEU:HD13	1:A:76:ILE:HD13	1.96	0.47
1:B:395:THR:OG1	1:B:397:GLN:HG3	2.15	0.47
1:A:148:ASP:OD1	1:A:150:SER:OG	2.23	0.47
1:B:137:ASP:CG	1:B:140:HIS:HD2	2.18	0.47
1:B:222:LYS:HB3	1:B:296:TYR:CE2	2.49	0.47
1:A:40:ARG:NH2	3:A:502:ADP:O1B	2.47	0.47
1:A:60:VAL:HG23	1:A:61:LEU:N	2.30	0.47
1:B:81:LYS:HA	1:B:84:LEU:HB3	1.96	0.47
1:A:16:ARG:HB3	1:A:24:VAL:O	2.14	0.47
1:A:19:GLY:HA3	3:A:502:ADP:PB	2.55	0.47
1:A:92:VAL:O	1:A:96:LEU:HD13	2.13	0.47
1:B:395:THR:CB	1:B:397:GLN:HG3	2.44	0.47
1:B:259:ARG:CG	1:B:260:THR:N	2.78	0.47
1:A:290:LEU:HD11	1:A:375:PHE:CE2	2.50	0.47
1:B:25:LEU:HD21	1:B:118:VAL:HG11	1.96	0.46
1:A:166:GLU:HB3	1:A:241:ARG:HB2	1.98	0.46
1:B:16:ARG:HB3	1:B:24:VAL:O	2.15	0.46
1:A:68:LEU:O	1:A:68:LEU:HG	2.15	0.46
1:B:330:CYS:SG	1:B:332:ILE:HB	2.55	0.46
1:A:96:LEU:N	1:A:96:LEU:HD12	2.30	0.46
1:B:168:LYS:HE2	1:B:170:LYS:HD3	1.98	0.46
1:B:195:MET:HG2	1:B:430:TYR:CG	2.51	0.46
1:A:171:CYS:HB2	1:A:367:LYS:HG2	1.97	0.46
1:B:372:MET:HG3	1:B:406:ILE:HD13	1.96	0.46
1:A:204:ILE:O	1:A:204:ILE:CG2	2.64	0.46
1:B:234:SER:O	1:B:236:PRO:HD3	2.16	0.46
1:B:10:ALA:HB3	1:B:117:CYS:SG	2.55	0.45

*Continued on next page...*



*Continued from previous page...*

Atom-1	Atom-2	Interatomic distance (Å)	Clash overlap (Å)
1:A:295:VAL:HG12	1:A:296:TYR:N	2.31	0.45
1:B:19:GLY:HA3	3:B:502:ADP:O2B	2.14	0.45
1:B:222:LYS:HE3	1:B:222:LYS:HB2	1.71	0.45
1:B:23:LEU:HD11	1:B:126:ARG:HD3	1.98	0.45
1:A:370:SER:HB2	1:A:406:ILE:HG13	1.98	0.45
1:B:313:LEU:O	1:B:314:ASP:HB3	2.16	0.45
1:A:295:VAL:HG13	1:A:301:LEU:HD22	1.99	0.45
1:A:236:PRO:HB3	1:A:240:PHE:HB3	1.97	0.45
1:B:192:ARG:HD3	1:B:192:ARG:O	2.17	0.45
1:A:78:SER:OG	1:A:87:ARG:HD2	2.17	0.45
1:B:349:PRO:HG2	1:B:352:GLU:HB2	1.99	0.45
1:B:8:LYS:HG3	1:B:9:ASP:N	2.31	0.44
1:A:105:GLY:HA3	1:A:146:LEU:HD23	1.99	0.44
1:B:393:LYS:N	1:B:394:PRO:HD2	2.32	0.44
1:B:119:ASP:HB2	1:B:136:VAL:CG1	2.48	0.44
1:A:108:VAL:HG12	1:A:143:ALA:O	2.18	0.44
1:A:85:GLU:HB3	1:A:144:LEU:HD11	1.99	0.44
1:A:201:LEU:HD12	1:A:206:ILE:HG13	1.99	0.44
1:A:259:ARG:HG2	1:A:260:THR:N	2.32	0.44
1:A:91:ASN:O	1:A:95:PRO:HG2	2.17	0.44
1:B:204:ILE:HG22	1:B:204:ILE:O	2.18	0.44
1:A:64:ASP:O	1:A:67:HIS:HB3	2.18	0.44
1:A:61:LEU:CD1	1:A:76:ILE:HD13	2.48	0.43
1:B:198:LEU:CD2	1:B:433:LYS:HD3	2.48	0.43
1:B:18:GLU:OE2	1:B:43:LYS:NZ	2.42	0.43
1:A:27:TYR:CD2	1:A:34:PHE:HB2	2.53	0.43
1:A:82:CYS:HB2	1:A:107:ARG:CZ	2.43	0.43
1:B:137:ASP:CG	1:B:140:HIS:CD2	2.92	0.43
1:A:166:GLU:OE1	1:A:241:ARG:HD2	2.19	0.43
1:A:249:ILE:HG13	1:A:268:PHE:CE1	2.53	0.43
1:B:325:ILE:HD11	1:B:353:SER:HB2	2.00	0.43
1:B:119:ASP:HB2	1:B:136:VAL:HG13	2.00	0.42
1:B:282:HIS:N	1:B:282:HIS:HD2	2.16	0.42
1:B:378:ARG:HD3	1:B:398:THR:CG2	2.49	0.42
1:A:6:GLU:O	1:A:114:PHE:HD1	2.02	0.42
1:B:163:ILE:HD13	1:B:244:LEU:HG	2.00	0.42
1:A:248:LEU:HD21	1:A:251:GLY:O	2.19	0.42
1:B:60:VAL:HG21	1:B:78:SER:O	2.20	0.42
1:B:110:VAL:HG21	1:B:115:LEU:HD21	2.02	0.42
1:B:27:TYR:OH	1:B:31:SER:HB3	2.20	0.42
1:A:277:GLN:HA	1:A:277:GLN:OE1	2.20	0.42

*Continued on next page...*

*Continued from previous page...*

Atom-1	Atom-2	Interatomic distance (Å)	Clash overlap (Å)
1:A:313:LEU:O	1:A:314:ASP:HB3	2.19	0.42
1:B:13:TRP:O	1:B:121:LYS:HE2	2.20	0.42
1:A:284:THR:O	1:A:288:LEU:HG	2.20	0.42
1:B:16:ARG:NH2	1:B:150:SER:OG	2.52	0.41
1:A:218:PHE:CE1	1:A:301:LEU:HG	2.55	0.41
1:A:27:TYR:CE2	1:A:34:PHE:HB2	2.55	0.41
1:A:392:LEU:O	1:A:396:ASN:HA	2.20	0.41
1:A:274:GLY:O	1:A:275:PHE:C	2.58	0.41
1:B:198:LEU:HD22	1:B:433:LYS:HD3	2.02	0.41
1:B:319:ILE:HG23	1:B:320:HIS:N	2.34	0.41
1:A:414:LYS:HG3	1:A:414:LYS:O	2.20	0.41
1:A:294:ALA:O	1:A:298:SER:HB3	2.21	0.41
1:A:97:LEU:O	1:A:303:ARG:NE	2.53	0.41
1:B:163:ILE:HG13	1:B:275:PHE:CE1	2.55	0.41
1:A:298:SER:OG	1:A:300:VAL:HB	2.19	0.41
1:A:118:VAL:O	1:A:122:VAL:HG22	2.20	0.41
1:B:74:GLU:CG	1:B:75:LEU:H	2.33	0.41
1:A:259:ARG:CG	1:A:260:THR:N	2.84	0.41
1:A:389:TYR:C	1:A:389:TYR:CD1	2.94	0.41
1:B:437:GLU:O	1:B:437:GLU:HG2	2.21	0.41
1:A:6:GLU:HA	1:A:111:SER:OG	2.20	0.41
1:B:33:LEU:HD23	1:B:33:LEU:HA	1.88	0.41
1:B:395:THR:C	1:B:397:GLN:H	2.24	0.41
1:B:329:PRO:O	1:B:331:PRO:CD	2.69	0.40
1:B:60:VAL:HG13	1:B:61:LEU:N	2.35	0.40
1:B:330:CYS:HA	1:B:331:PRO:HD2	1.93	0.40
1:A:251:GLY:HA2	1:A:257:THR:HG21	2.03	0.40
1:B:148:ASP:C	1:B:148:ASP:OD1	2.60	0.40

There are no symmetry-related clashes.

## 5.3 Torsion angles [i](#)

### 5.3.1 Protein backbone [i](#)

In the following table, the Percentiles column shows the percent Ramachandran outliers of the chain as a percentile score with respect to all X-ray entries followed by that with respect to entries of similar resolution.

The Analysed column shows the number of residues for which the backbone conformation was analysed, and the total number of residues.

Mol	Chain	Analysed	Favoured	Allowed	Outliers	Percentiles	
1	A	378/493 (77%)	350 (93%)	23 (6%)	5 (1%)	15	30
1	B	382/493 (78%)	356 (93%)	24 (6%)	2 (0%)	34	60
All	All	760/986 (77%)	706 (93%)	47 (6%)	7 (1%)	21	42

All (7) Ramachandran outliers are listed below:

Mol	Chain	Res	Type
1	A	394	PRO
1	A	182	LYS
1	A	314	ASP
1	A	436	ALA
1	B	234	SER
1	A	275	PHE
1	B	178	ARG

### 5.3.2 Protein sidechains ⓘ

In the following table, the Percentiles column shows the percent sidechain outliers of the chain as a percentile score with respect to all X-ray entries followed by that with respect to entries of similar resolution.

The Analysed column shows the number of residues for which the sidechain conformation was analysed, and the total number of residues.

Mol	Chain	Analysed	Rotameric	Outliers	Percentiles	
1	A	350/434 (81%)	329 (94%)	21 (6%)	24	47
1	B	353/434 (81%)	328 (93%)	25 (7%)	18	36
All	All	703/868 (81%)	657 (94%)	46 (6%)	21	42

All (46) residues with a non-rotameric sidechain are listed below:

Mol	Chain	Res	Type
1	A	23	LEU
1	A	80	ASN
1	A	107	ARG
1	A	163	ILE
1	A	164	SER
1	A	176	THR
1	A	186	LEU
1	A	191	SER
1	A	192	ARG

*Continued on next page...*

*Continued from previous page...*

Mol	Chain	Res	Type
1	A	202	GLU
1	A	208	GLU
1	A	244	LEU
1	A	256	SER
1	A	278	SER
1	A	290	LEU
1	A	298	SER
1	A	301	LEU
1	A	328	GLN
1	A	391	SER
1	A	395	THR
1	A	418	SER
1	B	9	ASP
1	B	11	SER
1	B	16	ARG
1	B	25	LEU
1	B	78	SER
1	B	94	ILE
1	B	107	ARG
1	B	145	ILE
1	B	164	SER
1	B	176	THR
1	B	198	LEU
1	B	207	SER
1	B	221	SER
1	B	244	LEU
1	B	247	SER
1	B	253	SER
1	B	259	ARG
1	B	270	ASP
1	B	282	HIS
1	B	370	SER
1	B	372	MET
1	B	377	SER
1	B	388	ASP
1	B	391	SER
1	B	437	GLU

Some sidechains can be flipped to improve hydrogen bonding and reduce clashes. All (8) such sidechains are listed below:

Mol	Chain	Res	Type
1	A	140	HIS

*Continued on next page...*

*Continued from previous page...*

Mol	Chain	Res	Type
1	A	147	ASN
1	A	196	HIS
1	B	72	ASN
1	B	140	HIS
1	B	147	ASN
1	B	196	HIS
1	B	282	HIS

### 5.3.3 RNA [i](#)

There are no RNA molecules in this entry.

## 5.4 Non-standard residues in protein, DNA, RNA chains [i](#)

There are no non-standard protein/DNA/RNA residues in this entry.

## 5.5 Carbohydrates [i](#)

There are no carbohydrates in this entry.

## 5.6 Ligand geometry [i](#)

Of 8 ligands modelled in this entry, 4 are monoatomic - leaving 4 for Mogul analysis.

In the following table, the Counts columns list the number of bonds (or angles) for which Mogul statistics could be retrieved, the number of bonds (or angles) that are observed in the model and the number of bonds (or angles) that are defined in the chemical component dictionary. The Link column lists molecule types, if any, to which the group is linked. The Z score for a bond length (or angle) is the number of standard deviations the observed value is removed from the expected value. A bond length (or angle) with  $|Z| > 2$  is considered an outlier worth inspection. RMSZ is the root-mean-square of all Z scores of the bond lengths (or angles).

Mol	Type	Chain	Res	Link	Bond lengths			Bond angles		
					Counts	RMSZ	$\# Z  > 2$	Counts	RMSZ	$\# Z  > 2$
2	IHP	A	501	-	36,36,36	1.14	2 (5%)	48,60,60	1.46	9 (18%)
3	ADP	A	502	4	22,29,29	1.11	2 (9%)	27,45,45	2.02	4 (14%)
2	IHP	B	501	4	36,36,36	1.09	2 (5%)	48,60,60	1.46	7 (14%)
3	ADP	B	502	4	22,29,29	1.12	2 (9%)	27,45,45	1.94	4 (14%)

In the following table, the Chirals column lists the number of chiral outliers, the number of chiral

centers analysed, the number of these observed in the model and the number defined in the chemical component dictionary. Similar counts are reported in the Torsion and Rings columns. '-' means no outliers of that kind were identified.

Mol	Type	Chain	Res	Link	Chirals	Torsions	Rings
2	IHP	A	501	-	-	0/30/54/54	0/1/1/1
3	ADP	A	502	4	-	0/12/32/32	0/3/3/3
2	IHP	B	501	4	-	0/30/54/54	0/1/1/1
3	ADP	B	502	4	-	0/12/32/32	0/3/3/3

All (8) bond length outliers are listed below:

Mol	Chain	Res	Type	Atoms	Z	Observed(Å)	Ideal(Å)
2	A	501	IHP	O12-C2	-2.42	1.36	1.44
2	B	501	IHP	O12-C2	-2.36	1.36	1.44
2	A	501	IHP	O15-C5	-2.25	1.37	1.44
2	B	501	IHP	C2-C1	-2.08	1.47	1.52
3	A	502	ADP	O4'-C1'	2.66	1.44	1.41
3	B	502	ADP	O4'-C1'	2.92	1.44	1.41
3	A	502	ADP	C5-C4	3.42	1.48	1.40
3	B	502	ADP	C5-C4	3.42	1.48	1.40

All (24) bond angle outliers are listed below:

Mol	Chain	Res	Type	Atoms	Z	Observed(°)	Ideal(°)
3	B	502	ADP	N3-C2-N1	-6.53	123.90	128.89
3	A	502	ADP	N3-C2-N1	-6.44	123.97	128.89
3	A	502	ADP	C2'-C1'-N9	-5.58	105.76	114.29
3	B	502	ADP	C2'-C1'-N9	-5.25	106.27	114.29
2	A	501	IHP	C4-C3-C2	-4.12	101.33	110.43
2	A	501	IHP	C6-C1-C2	-3.79	102.06	110.43
2	B	501	IHP	C6-C1-C2	-3.62	102.43	110.43
2	B	501	IHP	C4-C3-C2	-3.41	102.90	110.43
3	B	502	ADP	PA-O3A-PB	-3.03	122.50	132.67
3	A	502	ADP	PA-O3A-PB	-2.89	122.98	132.67
3	A	502	ADP	C4-C5-N7	-2.58	107.10	109.48
2	A	501	IHP	C3-C2-C1	-2.57	104.75	110.43
3	B	502	ADP	C4-C5-N7	-2.54	107.14	109.48
2	A	501	IHP	O16-C6-C5	2.07	113.28	108.47
2	A	501	IHP	O13-C3-C2	2.26	113.72	108.47
2	A	501	IHP	C6-C5-C4	2.27	115.44	110.43
2	B	501	IHP	P1-O11-C1	2.27	127.00	121.56
2	B	501	IHP	C6-C5-C4	2.36	115.65	110.43
2	B	501	IHP	O12-C2-C3	2.40	114.03	108.47

*Continued on next page...*

*Continued from previous page...*

Mol	Chain	Res	Type	Atoms	Z	Observed(°)	Ideal(°)
2	A	501	IHP	O14-C4-C5	2.53	114.35	108.47
2	A	501	IHP	P1-O11-C1	2.82	128.34	121.56
2	A	501	IHP	O12-P2-O22	3.25	115.23	107.11
2	B	501	IHP	O12-P2-O22	3.46	115.76	107.11
2	B	501	IHP	O11-C1-C6	4.04	117.83	108.47

There are no chirality outliers.

There are no torsion outliers.

There are no ring outliers.

2 monomers are involved in 4 short contacts:

Mol	Chain	Res	Type	Clashes	Symm-Clashes
3	A	502	ADP	3	0
3	B	502	ADP	1	0

## 5.7 Other polymers [i](#)

There are no such residues in this entry.

## 5.8 Polymer linkage issues [i](#)

There are no chain breaks in this entry.

## 6 Fit of model and data [i](#)

### 6.1 Protein, DNA and RNA chains [i](#)

In the following table, the column labelled ‘#RSRZ> 2’ contains the number (and percentage) of RSRZ outliers, followed by percent RSRZ outliers for the chain as percentile scores relative to all X-ray entries and entries of similar resolution. The OWAB column contains the minimum, median, 95<sup>th</sup> percentile and maximum values of the occupancy-weighted average B-factor per residue. The column labelled ‘Q< 0.9’ lists the number of (and percentage) of residues with an average occupancy less than 0.9.

Mol	Chain	Analysed	<RSRZ>	#RSRZ>2	OWAB(Å <sup>2</sup> )	Q<0.9
1	A	390/493 (79%)	-0.59	0 <b>100</b> <b>100</b>	13, 32, 56, 80	0
1	B	394/493 (79%)	-0.63	1 (0%) <b>94</b> <b>93</b>	13, 29, 54, 82	0
All	All	784/986 (79%)	-0.61	1 (0%) <b>95</b> <b>95</b>	13, 31, 55, 82	0

All (1) RSRZ outliers are listed below:

Mol	Chain	Res	Type	RSRZ
1	B	392	LEU	2.3

### 6.2 Non-standard residues in protein, DNA, RNA chains [i](#)

There are no non-standard protein/DNA/RNA residues in this entry.

### 6.3 Carbohydrates [i](#)

There are no carbohydrates in this entry.

### 6.4 Ligands [i](#)

In the following table, the Atoms column lists the number of modelled atoms in the group and the number defined in the chemical component dictionary. LLDF column lists the quality of electron density of the group with respect to its neighbouring residues in protein, DNA or RNA chains. The B-factors column lists the minimum, median, 95<sup>th</sup> percentile and maximum values of B factors of atoms in the group. The column labelled ‘Q< 0.9’ lists the number of atoms with occupancy less than 0.9.

Mol	Type	Chain	Res	Atoms	RSCC	RSR	LLDF	B-factors(Å <sup>2</sup> )	Q<0.9
3	ADP	A	502	27/27	0.92	0.15	<b>2.07</b>	23,33,45,53	0
3	ADP	B	502	27/27	0.92	0.14	0.49	19,27,38,42	0

*Continued on next page...*



*Continued from previous page...*

Mol	Type	Chain	Res	Atoms	RSCC	RSR	LLDF	B-factors( $\text{\AA}^2$ )	Q<0.9
2	IHP	B	501	36/36	0.98	0.10	-1.00	11,20,31,32	0
2	IHP	A	501	36/36	0.98	0.09	-1.11	13,19,27,32	0
4	MG	A	503	1/1	0.98	0.10	-1.61	29,29,29,29	0
5	ZN	B	504	1/1	0.99	0.11	-	27,27,27,27	0
5	ZN	A	504	1/1	0.99	0.10	-	23,23,23,23	0
4	MG	B	503	1/1	0.97	0.07	-	29,29,29,29	0

## 6.5 Other polymers [i](#)

There are no such residues in this entry.