



# Full wwPDB X-ray Structure Validation Report ⓘ

Feb 1, 2016 – 06:32 PM GMT

PDB ID : 4LXU  
Title : dTdp-Fuc3N and 5-N-Formyl-THF  
Authors : Thoden, J.B.; Goneau, M.-F.; Gilbert, M.; Holden, H.M.  
Deposited on : 2013-07-30  
Resolution : 1.40 Å(reported)

This is a Full wwPDB X-ray Structure Validation Report for a publicly released PDB entry.  
We welcome your comments at [validation@mail.wwpdb.org](mailto:validation@mail.wwpdb.org)  
A user guide is available at  
<http://wwpdb.org/validation/2016/XrayValidationReportHelp>  
with specific help available everywhere you see the ⓘ symbol.

---

The following versions of software and data (see [references ⓘ](#)) were used in the production of this report:

MolProbity : 4.02b-467  
Mogul : 1.7 (RC4), CSD as536be (2015)  
Xtriage (Phenix) : 1.9-1692  
EDS : rb-20026688  
Percentile statistics : 20151230.v01 (using entries in the PDB archive December 30th 2015)  
Refmac : 5.8.0135  
CCP4 : 6.5.0  
Ideal geometry (proteins) : Engh & Huber (2001)  
Ideal geometry (DNA, RNA) : Parkinson et al. (1996)  
Validation Pipeline (wwPDB-VP) : trunk26865

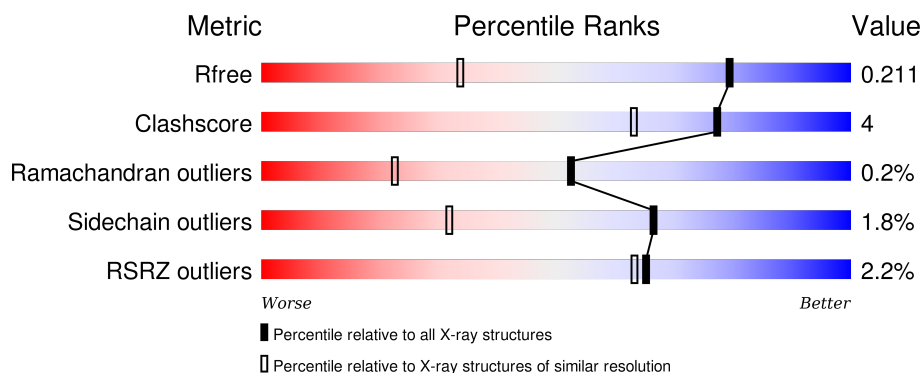
# 1 Overall quality at a glance ⓘ

The following experimental techniques were used to determine the structure:

## *X-RAY DIFFRACTION*

The reported resolution of this entry is 1.40 Å.

Percentile scores (ranging between 0-100) for global validation metrics of the entry are shown in the following graphic. The table shows the number of entries on which the scores are based.



Metric	Whole archive (#Entries)	Similar resolution (#Entries, resolution range(Å))
$R_{free}$	91344	1199 (1.40-1.40)
Clashscore	102246	1295 (1.40-1.40)
Ramachandran outliers	100387	1259 (1.40-1.40)
Sidechain outliers	100360	1258 (1.40-1.40)
RSRZ outliers	91569	1198 (1.40-1.40)

The table below summarises the geometric issues observed across the polymeric chains and their fit to the electron density. The red, orange, yellow and green segments on the lower bar indicate the fraction of residues that contain outliers for  $\geq 3$ , 2, 1 and 0 types of geometric quality criteria. A grey segment represents the fraction of residues that are not modelled. The numeric value for each fraction is indicated below the corresponding segment, with a dot representing fractions  $\leq 5\%$ . The upper red bar (where present) indicates the fraction of residues that have poor fit to the electron density. The numeric value is given above the bar.

Mol	Chain	Length	Quality of chain
1	A	274	<div> <div></div> <div>92%8%</div> </div>
1	B	274	<div> <div>3%</div> <div>87%12%</div> </div>

The following table lists non-polymeric compounds, carbohydrate monomers and non-standard residues in protein, DNA, RNA chains that are outliers for geometric or electron-density-fit criteria:

Mol	Type	Chain	Res	Chirality	Geometry	Clashes	Electron density
3	MPO	B	302	-	-	-	X
5	EDO	A	305	-	-	-	X
5	EDO	A	307	-	-	-	X
5	EDO	B	307	-	-	-	X
7	SO4	A	311	-	-	-	X

## 2 Entry composition [i](#)

There are 8 unique types of molecules in this entry. The entry contains 5723 atoms, of which 0 are hydrogens and 0 are deuteriums.

In the tables below, the ZeroOcc column contains the number of atoms modelled with zero occupancy, the AltConf column contains the number of residues with at least one atom in alternate conformation and the Trace column contains the number of residues modelled with at most 2 atoms.

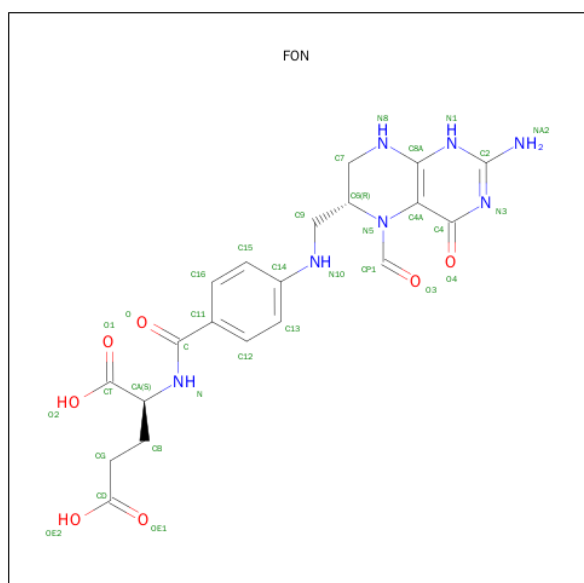
- Molecule 1 is a protein called WlaRD, a sugar 3N-formyl transferase.

Mol	Chain	Residues	Atoms					ZeroOcc	AltConf	Trace
1	A	273	Total	C	N	O	S	0	9	0
			2304	1509	375	417	3			
1	B	274	Total	C	N	O	S	0	8	0
			2299	1499	375	422	3			

There are 4 discrepancies between the modelled and reference sequences:

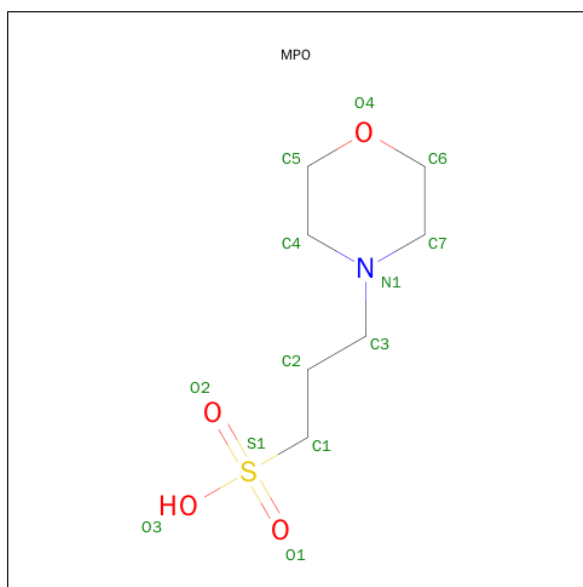
Chain	Residue	Modelled	Actual	Comment	Reference
A	-1	GLY	-	EXPRESSION TAG	UNP A8FMJ3
A	0	HIS	-	EXPRESSION TAG	UNP A8FMJ3
B	-1	GLY	-	EXPRESSION TAG	UNP A8FMJ3
B	0	HIS	-	EXPRESSION TAG	UNP A8FMJ3

- Molecule 2 is N-{[4-({[(6R)-2-AMINO-5-FORMYL-4-OXO-1,4,5,6,7,8-HEXAHYDRO PTERIDIN-6-YL]METHYL}AMINO)PHENYL]CARBONYL}-L-GLUTAMIC ACID (three-letter code: FON) (formula: C<sub>20</sub>H<sub>23</sub>N<sub>7</sub>O<sub>7</sub>).



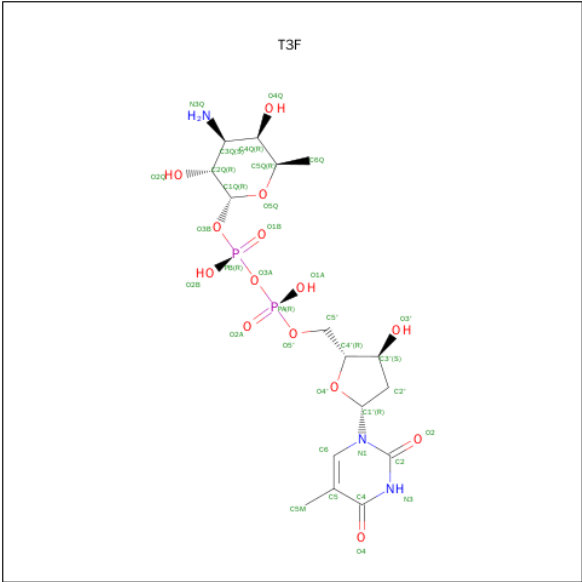
Mol	Chain	Residues	Atoms				ZeroOcc	AltConf
2	A	1	Total	C	N	O	0	0
			34	20	7	7		
2	B	1	Total	C	N	O	0	0
			34	20	7	7		

- Molecule 3 is 3[N-MORPHOLINO]PROPANE SULFONIC ACID (three-letter code: MPO) (formula:  $C_7H_{15}NO_4S$ ).



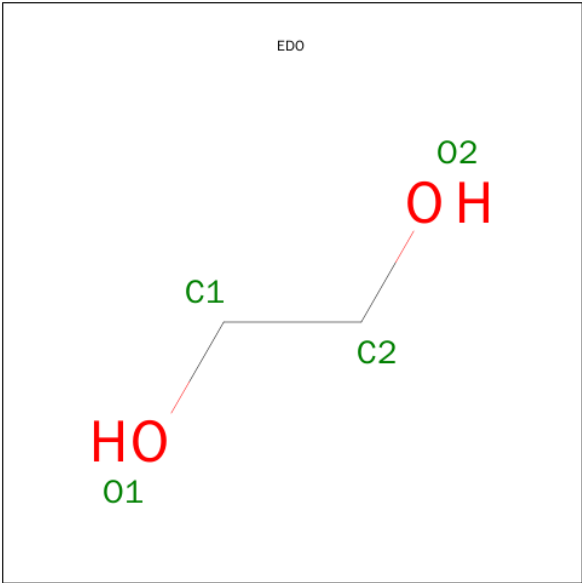
Mol	Chain	Residues	Atoms					ZeroOcc	AltConf
3	A	1	Total	C	N	O	S	0	0
			13	7	1	4	1		
3	B	1	Total	C	N	O	S	0	0
			13	7	1	4	1		

- Molecule 4 is (3R,4S,5R,6R)-4-AMINO-3,5-DIHYDROXY-6-METHYLOXAN-2-YL[[HYDROXY-[(2R,3S,5R)-3-HYDROXY-5-(5-METHYL-2,4-DIOXOPYRIMIDIN-1-YL)OXOLAN-2-YL]METHOXY]PHOSPHORYL] HYDROGEN PHOSPHATE (three-letter code: T3F) (formula:  $C_{16}H_{27}N_3O_{14}P_2$ ).



Mol	Chain	Residues	Atoms					ZeroOcc	AltConf
4	A	1	Total 35	C 16	N 3	O 14	P 2	0	0
4	B	1	Total 35	C 16	N 3	O 14	P 2	0	0

- Molecule 5 is 1,2-ETHANEDIOL (three-letter code: EDO) (formula: C<sub>2</sub>H<sub>6</sub>O<sub>2</sub>).



Mol	Chain	Residues	Atoms			ZeroOcc	AltConf
5	A	1	Total	C	O	0	0
			4	2	2		
5	A	1	Total	C	O	0	0
			4	2	2		

Continued on next page...

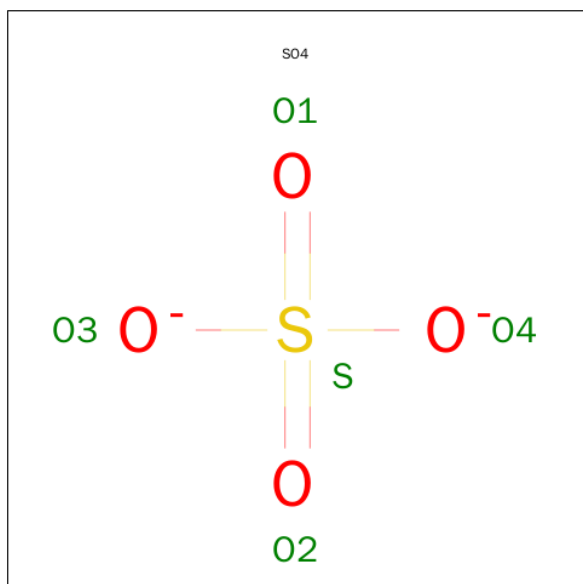
Continued from previous page...

Mol	Chain	Residues	Atoms	ZeroOcc	AltConf
5	A	1	Total C O 4 2 2	0	0
5	A	1	Total C O 4 2 2	0	0
5	A	1	Total C O 4 2 2	0	0
5	B	1	Total C O 4 2 2	0	0
5	B	1	Total C O 4 2 2	0	0
5	B	1	Total C O 4 2 2	0	0
5	B	1	Total C O 4 2 2	0	0
5	B	1	Total C O 4 2 2	0	0

- Molecule 6 is CHLORIDE ION (three-letter code: CL) (formula: Cl).

Mol	Chain	Residues	Atoms	ZeroOcc	AltConf
6	A	2	Total Cl 2 2	0	0

- Molecule 7 is SULFATE ION (three-letter code: SO4) (formula: O<sub>4</sub>S).



Mol	Chain	Residues	Atoms			ZeroOcc	AltConf
7	A	1	Total	O	S	0	0
			5	4	1		

- Molecule 8 is water.

Mol	Chain	Residues	Atoms		ZeroOcc	AltConf
8	A	503	Total	O	0	0
			503	503		
8	B	406	Total	O	0	0
			406	406		

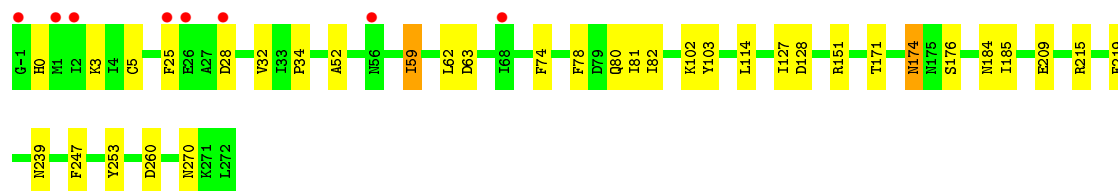
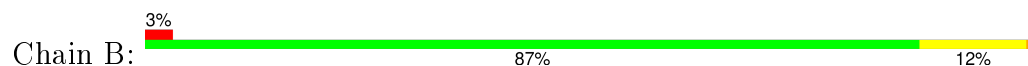
### 3 Residue-property plots [i](#)

These plots are drawn for all protein, RNA and DNA chains in the entry. The first graphic for a chain summarises the proportions of errors displayed in the second graphic. The second graphic shows the sequence view annotated by issues in geometry and electron density. Residues are color-coded according to the number of geometric quality criteria for which they contain at least one outlier: green = 0, yellow = 1, orange = 2 and red = 3 or more. A red dot above a residue indicates a poor fit to the electron density ( $RSRZ > 2$ ). Stretches of 2 or more consecutive residues without any outlier are shown as a green connector. Residues present in the sample, but not in the model, are shown in grey.

- Molecule 1: WlaRD, a sugar 3N-formyl transferase



- Molecule 1: WlaRD, a sugar 3N-formyl transferase



## 4 Data and refinement statistics

Property	Value	Source
Space group	C 1 2 1	Depositor
Cell constants a, b, c, $\alpha$ , $\beta$ , $\gamma$	96.53Å 64.88Å 134.46Å 90.00° 110.67° 90.00°	Depositor
Resolution (Å)	30.00 – 1.40 29.85 – 1.40	Depositor EDS
% Data completeness (in resolution range)	95.1 (30.00-1.40) 95.2 (29.85-1.40)	Depositor EDS
$R_{merge}$	0.06	Depositor
$R_{sym}$	0.06	Depositor
$\langle I/\sigma(I) \rangle$ <sup>1</sup>	6.98 (at 1.40Å)	Xtriage
Refinement program	REFMAC 5.5.0109	Depositor
R, $R_{free}$	0.180 , 0.211 0.180 , 0.211	Depositor DCC
$R_{free}$ test set	7658 reflections (5.55%)	DCC
Wilson B-factor (Å <sup>2</sup> )	14.5	Xtriage
Anisotropy	0.069	Xtriage
Bulk solvent $k_{sol}$ (e/Å <sup>3</sup> ), $B_{sol}$ (Å <sup>2</sup> )	0.36 , 48.4	EDS
Estimated twinning fraction	0.011 for h,-k,-h-l	Xtriage
L-test for twinning <sup>2</sup>	$\langle  L  \rangle = 0.49$ , $\langle L^2 \rangle = 0.32$	Xtriage
Outliers	0 of 145263 reflections	Xtriage
$F_o, F_c$ correlation	0.97	EDS
Total number of atoms	5723	wwPDB-VP
Average B, all atoms (Å <sup>2</sup> )	20.0	wwPDB-VP

Xtriage's analysis on translational NCS is as follows: *The largest off-origin peak in the Patterson function is 4.37% of the height of the origin peak. No significant pseudotranslation is detected.*

<sup>1</sup>Intensities estimated from amplitudes.

<sup>2</sup>Theoretical values of  $\langle |L| \rangle$ ,  $\langle L^2 \rangle$  for acentric reflections are 0.5, 0.375 respectively for untwinned datasets, and 0.333, 0.2 for perfectly twinned datasets.

## 5 Model quality

### 5.1 Standard geometry

Bond lengths and bond angles in the following residue types are not validated in this section: CL, T3F, MPO, EDO, SO4, FON

The Z score for a bond length (or angle) is the number of standard deviations the observed value is removed from the expected value. A bond length (or angle) with  $|Z| > 5$  is considered an outlier worth inspection. RMSZ is the root-mean-square of all Z scores of the bond lengths (or angles).

Mol	Chain	Bond lengths		Bond angles	
		RMSZ	$\# Z  > 5$	RMSZ	$\# Z  > 5$
1	A	0.70	0/2380	1.07	6/3208 (0.2%)
1	B	0.67	1/2369 (0.0%)	1.12	9/3194 (0.3%)
All	All	0.69	1/4749 (0.0%)	1.09	15/6402 (0.2%)

All (1) bond length outliers are listed below:

Mol	Chain	Res	Type	Atoms	Z	Observed(Å)	Ideal(Å)
1	B	5	CYS	CB-SG	-6.85	1.70	1.82

All (15) bond angle outliers are listed below:

Mol	Chain	Res	Type	Atoms	Z	Observed(°)	Ideal(°)
1	B	215	ARG	NE-CZ-NH1	9.07	124.84	120.30
1	B	5	CYS	CA-CB-SG	7.99	128.38	114.00
1	B	114	LEU	CB-CG-CD2	-7.06	99.00	111.00
1	B	260	ASP	CB-CG-OD2	-6.92	112.07	118.30
1	A	126	ARG	NE-CZ-NH1	-6.63	116.98	120.30
1	B	151	ARG	NE-CZ-NH1	-6.53	117.03	120.30
1	A	103	TYR	CB-CG-CD1	-6.25	117.25	121.00
1	A	209	GLU	OE1-CD-OE2	-6.16	115.91	123.30
1	B	209	GLU	OE1-CD-OE2	-6.01	116.08	123.30
1	B	253	TYR	CB-CG-CD1	-5.87	117.48	121.00
1	B	28	ASP	CB-CG-OD2	5.51	123.26	118.30
1	A	28	ASP	CB-CG-OD1	5.47	123.22	118.30
1	B	128	ASP	CB-CG-OD1	-5.44	113.40	118.30
1	A	253	TYR	CZ-CE2-CD2	-5.17	115.15	119.80
1	A	97	PHE	CB-CG-CD1	5.15	124.41	120.80

There are no chirality outliers.

There are no planarity outliers.

## 5.2 Too-close contacts ⓘ

In the following table, the Non-H and H(model) columns list the number of non-hydrogen atoms and hydrogen atoms in the chain respectively. The H(added) column lists the number of hydrogen atoms added and optimized by MolProbity. The Clashes column lists the number of clashes within the asymmetric unit, whereas Symm-Clashes lists symmetry related clashes.

Mol	Chain	Non-H	H(model)	H(added)	Clashes	Symm-Clashes
1	A	2304	0	2369	15	0
1	B	2299	0	2339	18	0
2	A	34	0	21	1	0
2	B	34	0	21	2	0
3	A	13	0	15	0	0
3	B	13	0	15	2	0
4	A	35	0	25	0	0
4	B	35	0	25	0	0
5	A	20	0	30	2	0
5	B	20	0	30	0	0
6	A	2	0	0	0	0
7	A	5	0	0	0	0
8	A	503	0	0	4	0
8	B	406	0	0	3	1
All	All	5723	0	4890	36	1

The all-atom clashscore is defined as the number of clashes found per 1000 atoms (including hydrogen atoms). The all-atom clashscore for this structure is 4.

All (36) close contacts within the same asymmetric unit are listed below, sorted by their clash magnitude.

Atom-1	Atom-2	Interatomic distance (Å)	Clash overlap (Å)
1:B:3:LYS:HD3	1:B:25:PHE:HE1	1.34	0.93
1:A:193:LYS:HE3	8:B:670:HOH:O	1.75	0.86
1:B:3:LYS:HD3	1:B:25:PHE:CE1	2.14	0.82
1:A:20[B]:ILE:HD11	1:A:30:ILE:CD1	2.13	0.79
1:B:174[A]:ASN:ND2	1:B:176:SER:OG	2.19	0.75
1:B:82:ILE:H	2:B:301:FON:HN1	1.34	0.73
1:A:82:ILE:H	2:A:301:FON:HN1	1.35	0.72
5:A:307:EDO:H12	8:A:662:HOH:O	1.92	0.68
1:A:20[B]:ILE:HD11	1:A:30:ILE:HD11	1.74	0.67
1:A:16:SER:O	1:A:20[B]:ILE:HG23	1.94	0.67
3:B:302:MPO:H41	8:B:664:HOH:O	1.99	0.62
1:A:56[A]:ASN:OD1	8:A:820:HOH:O	2.18	0.56
1:B:82:ILE:HD11	1:B:127:ILE:HG21	1.90	0.53

*Continued on next page...*

Continued from previous page...

Atom-1	Atom-2	Interatomic distance (Å)	Clash overlap (Å)
1:A:107:PHE:CE2	1:A:192[A]:ARG:NH2	2.76	0.52
1:B:184:ASN:OD1	1:B:185[B]:ILE:HD13	2.10	0.52
1:B:239[B]:ASN:ND2	8:B:665:HOH:O	2.46	0.48
1:B:171:THR:HA	1:B:174[A]:ASN:ND2	2.29	0.48
2:B:301:FON:O4	2:B:301:FON:HCP1	2.14	0.47
1:A:20[B]:ILE:CD1	1:A:25:PHE:HB2	2.44	0.47
1:B:32:VAL:HG12	1:B:34:PRO:HD3	1.96	0.47
1:B:52:ALA:CB	1:B:59:ILE:HD11	2.45	0.46
1:A:84:ILE:HD11	8:A:736:HOH:O	2.16	0.45
1:B:247:PHE:CD1	3:B:302:MPO:H71	2.52	0.45
1:A:69:GLU:HG2	1:A:88:LYS:CD	2.48	0.44
1:A:69:GLU:HG2	1:A:88:LYS:HD3	1.99	0.44
1:B:59:ILE:HD13	1:B:59:ILE:N	2.33	0.44
1:B:81[A]:ILE:HD13	1:B:81[A]:ILE:HA	1.79	0.43
1:A:193:LYS:NZ	8:A:449:HOH:O	2.32	0.42
1:B:52:ALA:HB3	1:B:59:ILE:HD11	2.01	0.42
1:A:204:LYS:HD2	5:A:304:EDO:H12	2.02	0.41
1:A:20[B]:ILE:CD1	1:A:30:ILE:HD11	2.46	0.41
1:B:102:LYS:HB3	1:B:103:TYR:CD2	2.56	0.41
1:B:78:PHE:CE1	1:B:80:GLN:HB2	2.56	0.41
1:B:62:LEU:HD23	1:B:62:LEU:HA	1.93	0.40

All (1) symmetry-related close contacts are listed below. The label for Atom-2 includes the symmetry operator and encoded unit-cell translations to be applied.

Atom-1	Atom-2	Interatomic distance (Å)	Clash overlap (Å)
8:B:613:HOH:O	8:B:732:HOH:O[2_556]	2.15	0.05

## 5.3 Torsion angles [i](#)

### 5.3.1 Protein backbone [i](#)

In the following table, the Percentiles column shows the percent Ramachandran outliers of the chain as a percentile score with respect to all X-ray entries followed by that with respect to entries of similar resolution.

The Analysed column shows the number of residues for which the backbone conformation was analysed, and the total number of residues.

Mol	Chain	Analysed	Favoured	Allowed	Outliers	Percentiles	
1	A	281/274 (103%)	272 (97%)	9 (3%)	0	100	100
1	B	280/274 (102%)	272 (97%)	7 (2%)	1 (0%)	39	14
All	All	561/548 (102%)	544 (97%)	16 (3%)	1 (0%)	52	22

All (1) Ramachandran outliers are listed below:

Mol	Chain	Res	Type
1	B	0	HIS

### 5.3.2 Protein sidechains ⓘ

In the following table, the Percentiles column shows the percent sidechain outliers of the chain as a percentile score with respect to all X-ray entries followed by that with respect to entries of similar resolution.

The Analysed column shows the number of residues for which the sidechain conformation was analysed, and the total number of residues.

Mol	Chain	Analysed	Rotameric	Outliers	Percentiles	
1	A	263/254 (104%)	260 (99%)	3 (1%)	80	56
1	B	262/254 (103%)	254 (97%)	8 (3%)	47	12
All	All	525/508 (103%)	514 (98%)	11 (2%)	66	24

All (11) residues with a non-rotameric sidechain are listed below:

Mol	Chain	Res	Type
1	A	36	LYS
1	A	74	PHE
1	A	219	PHE
1	B	59	ILE
1	B	63[A]	ASP
1	B	63[B]	ASP
1	B	74	PHE
1	B	174[A]	ASN
1	B	174[B]	ASN
1	B	219	PHE
1	B	270	ASN

Some sidechains can be flipped to improve hydrogen bonding and reduce clashes. All (2) such sidechains are listed below:

Mol	Chain	Res	Type
1	A	94	ASN
1	B	94	ASN

### 5.3.3 RNA ⓘ

There are no RNA molecules in this entry.

## 5.4 Non-standard residues in protein, DNA, RNA chains ⓘ

There are no non-standard protein/DNA/RNA residues in this entry.

## 5.5 Carbohydrates ⓘ

There are no carbohydrates in this entry.

## 5.6 Ligand geometry ⓘ

Of 19 ligands modelled in this entry, 2 are monoatomic - leaving 17 for Mogul analysis.

In the following table, the Counts columns list the number of bonds (or angles) for which Mogul statistics could be retrieved, the number of bonds (or angles) that are observed in the model and the number of bonds (or angles) that are defined in the chemical component dictionary. The Link column lists molecule types, if any, to which the group is linked. The Z score for a bond length (or angle) is the number of standard deviations the observed value is removed from the expected value. A bond length (or angle) with  $|Z| > 2$  is considered an outlier worth inspection. RMSZ is the root-mean-square of all Z scores of the bond lengths (or angles).

Mol	Type	Chain	Res	Link	Bond lengths			Bond angles		
					Counts	RMSZ	# $ Z  > 2$	Counts	RMSZ	# $ Z  > 2$
2	FON	A	301	-	27,36,36	1.27	2 (7%)	30,50,50	1.70	5 (16%)
3	MPO	A	302	-	12,13,13	0.66	0	15,17,17	2.89	7 (46%)
4	T3F	A	303	-	29,37,37	1.08	2 (6%)	41,57,57	1.61	5 (12%)
5	EDO	A	304	-	3,3,3	0.47	0	2,2,2	0.83	0
5	EDO	A	305	-	3,3,3	0.60	0	2,2,2	0.49	0
5	EDO	A	306	-	3,3,3	0.51	0	2,2,2	0.52	0
5	EDO	A	307	-	3,3,3	0.60	0	2,2,2	0.60	0
5	EDO	A	308	-	3,3,3	0.54	0	2,2,2	0.74	0
7	SO4	A	311	-	4,4,4	0.17	0	6,6,6	0.10	0
2	FON	B	301	-	27,36,36	1.31	2 (7%)	30,50,50	1.69	7 (23%)
3	MPO	B	302	-	12,13,13	0.66	0	15,17,17	2.76	10 (66%)

Mol	Type	Chain	Res	Link	Bond lengths			Bond angles		
					Counts	RMSZ	# Z  > 2	Counts	RMSZ	# Z  > 2
4	T3F	B	303	-	29,37,37	1.22	2 (6%)	41,57,57	1.49	4 (9%)
5	EDO	B	304	-	3,3,3	0.48	0	2,2,2	0.70	0
5	EDO	B	305	-	3,3,3	0.50	0	2,2,2	0.62	0
5	EDO	B	306	-	3,3,3	0.62	0	2,2,2	0.76	0
5	EDO	B	307	-	3,3,3	0.60	0	2,2,2	0.21	0
5	EDO	B	308	-	3,3,3	0.49	0	2,2,2	0.80	0

In the following table, the Chirals column lists the number of chiral outliers, the number of chiral centers analysed, the number of these observed in the model and the number defined in the chemical component dictionary. Similar counts are reported in the Torsion and Rings columns. '-' means no outliers of that kind were identified.

Mol	Type	Chain	Res	Link	Chirals	Torsions	Rings
2	FON	A	301	-	-	0/18/37/37	0/2/3/3
3	MPO	A	302	-	-	0/7/15/15	0/1/1/1
4	T3F	A	303	-	-	0/17/53/53	0/3/3/3
5	EDO	A	304	-	-	0/1/1/1	0/0/0/0
5	EDO	A	305	-	-	0/1/1/1	0/0/0/0
5	EDO	A	306	-	-	0/1/1/1	0/0/0/0
5	EDO	A	307	-	-	0/1/1/1	0/0/0/0
5	EDO	A	308	-	-	0/1/1/1	0/0/0/0
7	SO4	A	311	-	-	0/0/0/0	0/0/0/0
2	FON	B	301	-	-	0/18/37/37	0/2/3/3
3	MPO	B	302	-	-	0/7/15/15	0/1/1/1
4	T3F	B	303	-	-	0/17/53/53	0/3/3/3
5	EDO	B	304	-	-	0/1/1/1	0/0/0/0
5	EDO	B	305	-	-	0/1/1/1	0/0/0/0
5	EDO	B	306	-	-	0/1/1/1	0/0/0/0
5	EDO	B	307	-	-	0/1/1/1	0/0/0/0
5	EDO	B	308	-	-	0/1/1/1	0/0/0/0

All (8) bond length outliers are listed below:

Mol	Chain	Res	Type	Atoms	Z	Observed(Å)	Ideal(Å)
2	B	301	FON	CP1-N5	-3.80	1.28	1.36
2	A	301	FON	CP1-N5	-3.58	1.29	1.36
4	A	303	T3F	PB-O2B	-2.20	1.45	1.54
4	B	303	T3F	C4-N3	3.15	1.39	1.33
4	A	303	T3F	O4-C4	3.88	1.34	1.24
2	A	301	FON	O4-C4	3.97	1.34	1.24
2	B	301	FON	O4-C4	4.12	1.34	1.24
4	B	303	T3F	O4-C4	4.14	1.34	1.24

All (38) bond angle outliers are listed below:

Mol	Chain	Res	Type	Atoms	Z	Observed(°)	Ideal(°)
4	B	303	T3F	C5-C4-N3	-5.94	118.52	125.14
3	B	302	MPO	C3-C2-C1	-4.26	105.35	112.37
2	A	301	FON	O3-CP1-N5	-4.03	118.15	124.21
3	B	302	MPO	C5-C4-N1	-3.99	104.08	110.12
4	A	303	T3F	C5-C4-N3	-3.94	120.75	125.14
2	A	301	FON	C4A-N5-C6	-3.17	114.28	119.81
2	B	301	FON	C4A-N5-C6	-3.02	114.55	119.81
2	A	301	FON	C9-N10-C14	-2.82	114.34	121.46
4	B	303	T3F	O3A-PB-O3B	-2.74	95.74	103.63
3	B	302	MPO	C2-C3-N1	-2.38	107.91	113.89
3	A	302	MPO	O3-S1-O1	-2.37	106.09	111.61
3	B	302	MPO	O3-S1-O1	-2.21	106.47	111.61
2	B	301	FON	O3-CP1-N5	-2.15	120.98	124.21
3	B	302	MPO	O2-S1-O1	-2.04	106.06	113.48
4	A	303	T3F	O2Q-C2Q-C3Q	-2.03	106.88	110.31
2	B	301	FON	C9-C6-N5	2.01	115.05	110.94
3	B	302	MPO	O2-S1-C1	2.10	108.70	106.91
4	B	303	T3F	O2B-PB-O1B	2.19	124.41	112.53
4	A	303	T3F	O2B-PB-O1B	2.20	124.47	112.53
3	A	302	MPO	C3-N1-C4	2.23	116.99	111.27
2	B	301	FON	NA2-C2-N1	2.31	121.02	117.20
3	B	302	MPO	O1-S1-C1	2.35	108.91	106.91
2	B	301	FON	C4-N3-C2	2.54	119.46	115.94
3	A	302	MPO	C6-C7-N1	2.65	114.13	110.12
3	A	302	MPO	O2-S1-C1	2.86	109.35	106.91
4	A	303	T3F	O5Q-C1Q-O3B	2.93	115.23	111.36
3	B	302	MPO	C3-N1-C7	3.32	119.78	111.27
2	B	301	FON	C12-C13-C14	3.38	124.08	120.28
4	B	303	T3F	C4-N3-C2	3.42	118.20	115.25
3	B	302	MPO	C3-N1-C4	3.44	120.08	111.27
2	B	301	FON	C4-C4A-C8A	3.47	117.19	114.43
2	A	301	FON	C4-C4A-C8A	4.09	117.69	114.43
3	A	302	MPO	C3-N1-C7	4.52	122.87	111.27
2	A	301	FON	C9-C6-N5	4.59	120.34	110.94
3	B	302	MPO	C7-N1-C4	5.15	120.06	108.90
3	A	302	MPO	C7-N1-C4	5.16	120.06	108.90
4	A	303	T3F	C4-N3-C2	6.34	120.72	115.25
3	A	302	MPO	O1-S1-C1	6.45	112.41	106.91

There are no chirality outliers.

There are no torsion outliers.

There are no ring outliers.

5 monomers are involved in 7 short contacts:

Mol	Chain	Res	Type	Clashes	Symm-Clashes
2	A	301	FON	1	0
5	A	304	EDO	1	0
5	A	307	EDO	1	0
2	B	301	FON	2	0
3	B	302	MPO	2	0

## 5.7 Other polymers [i](#)

There are no such residues in this entry.

## 5.8 Polymer linkage issues [i](#)

There are no chain breaks in this entry.

## 6 Fit of model and data [i](#)

### 6.1 Protein, DNA and RNA chains [i](#)

In the following table, the column labelled ‘#RSRZ> 2’ contains the number (and percentage) of RSRZ outliers, followed by percent RSRZ outliers for the chain as percentile scores relative to all X-ray entries and entries of similar resolution. The OWAB column contains the minimum, median, 95<sup>th</sup> percentile and maximum values of the occupancy-weighted average B-factor per residue. The column labelled ‘Q< 0.9’ lists the number of (and percentage) of residues with an average occupancy less than 0.9.

Mol	Chain	Analysed	<RSRZ>	#RSRZ>2	OWAB(Å <sup>2</sup> )	Q<0.9
1	A	273/274 (99%)	-0.33	4 (1%) 76 75	9, 14, 27, 52	0
1	B	274/274 (100%)	0.02	8 (2%) 55 52	10, 18, 36, 54	0
All	All	547/548 (99%)	-0.15	12 (2%) 65 63	9, 15, 33, 54	0

All (12) RSRZ outliers are listed below:

Mol	Chain	Res	Type	RSRZ
1	A	-1	GLY	11.5
1	B	-1	GLY	7.1
1	A	271	LYS	4.2
1	A	270	ASN	3.3
1	B	56[A]	ASN	2.9
1	B	28	ASP	2.7
1	A	229	ASN	2.6
1	B	2	ILE	2.3
1	B	68	ILE	2.2
1	B	26	GLU	2.2
1	B	1	MET	2.2
1	B	25	PHE	2.2

### 6.2 Non-standard residues in protein, DNA, RNA chains [i](#)

There are no non-standard protein/DNA/RNA residues in this entry.

### 6.3 Carbohydrates [i](#)

There are no carbohydrates in this entry.

## 6.4 Ligands [i](#)

In the following table, the Atoms column lists the number of modelled atoms in the group and the number defined in the chemical component dictionary. LLDF column lists the quality of electron density of the group with respect to its neighbouring residues in protein, DNA or RNA chains. The B-factors column lists the minimum, median, 95<sup>th</sup> percentile and maximum values of B factors of atoms in the group. The column labelled 'Q< 0.9' lists the number of atoms with occupancy less than 0.9.

Mol	Type	Chain	Res	Atoms	RSCC	RSR	LLDF	B-factors(Å <sup>2</sup> )	Q<0.9
5	EDO	A	307	4/4	0.94	0.17	4.41	19,25,30,40	0
5	EDO	A	305	4/4	0.92	0.11	2.82	20,24,27,30	0
7	SO4	A	311	5/5	0.87	0.20	2.73	78,78,81,81	0
5	EDO	B	307	4/4	0.80	0.20	2.54	28,32,33,34	0
3	MPO	B	302	13/13	0.96	0.16	2.41	27,31,43,44	0
3	MPO	A	302	13/13	0.94	0.20	1.74	28,34,39,41	0
5	EDO	B	306	4/4	0.77	0.14	1.65	30,30,36,41	0
5	EDO	A	308	4/4	0.93	0.10	1.62	22,25,33,34	0
5	EDO	B	305	4/4	0.96	0.10	1.35	17,25,34,36	0
5	EDO	B	308	4/4	0.92	0.10	0.77	27,33,36,39	0
2	FON	B	301	34/34	0.92	0.10	0.26	14,18,30,36	0
2	FON	A	301	34/34	0.95	0.07	-0.24	9,13,26,30	0
4	T3F	A	303	35/35	0.98	0.06	-0.48	10,12,15,15	0
4	T3F	B	303	35/35	0.98	0.06	-1.16	11,14,17,19	0
6	CL	A	310	1/1	0.97	0.08	-	23,23,23,23	0
5	EDO	A	304	4/4	0.91	0.15	-	20,28,30,32	0
5	EDO	A	306	4/4	0.96	0.10	-	26,34,36,41	0
6	CL	A	309	1/1	0.99	0.11	-	24,24,24,24	0
5	EDO	B	304	4/4	0.95	0.10	-	17,23,24,28	0

## 6.5 Other polymers [i](#)

There are no such residues in this entry.