



Full wwPDB X-ray Structure Validation Report ⓘ

Jan 31, 2016 – 08:45 PM GMT

PDB ID : 1LY3
Title : ANALYSIS OF QUINAZOLINE AND PYRIDOPYRIMIDINE N9-C10 REVERSED BRIDGE ANTIFOLATES IN COMPLEX WITH NADP+ AND PNEUMOCYSTIS CARINII DIHYDROFOLATE REDUCTASE
Authors : Cody, V.; Galitsky, N.; Luft, J.R.; Pangborn, W.; Queener, S.F.; Gangjee, A.
Deposited on : 2002-06-06
Resolution : 1.90 Å(reported)

This is a Full wwPDB X-ray Structure Validation Report for a publicly released PDB entry.
We welcome your comments at validation@mail.wwpdb.org
A user guide is available at
<http://wwpdb.org/validation/2016/XrayValidationReportHelp>
with specific help available everywhere you see the ⓘ symbol.

The following versions of software and data (see [references ⓘ](#)) were used in the production of this report:

MolProbity : 4.02b-467
Mogul : 1.7 (RC4), CSD as536be (2015)
Xtriage (Phenix) : 1.9-1692
EDS : rb-20026688
Percentile statistics : 20151230.v01 (using entries in the PDB archive December 30th 2015)
Refmac : 5.8.0135
CCP4 : 6.5.0
Ideal geometry (proteins) : Engh & Huber (2001)
Ideal geometry (DNA, RNA) : Parkinson et al. (1996)
Validation Pipeline (wwPDB-VP) : trunk26865

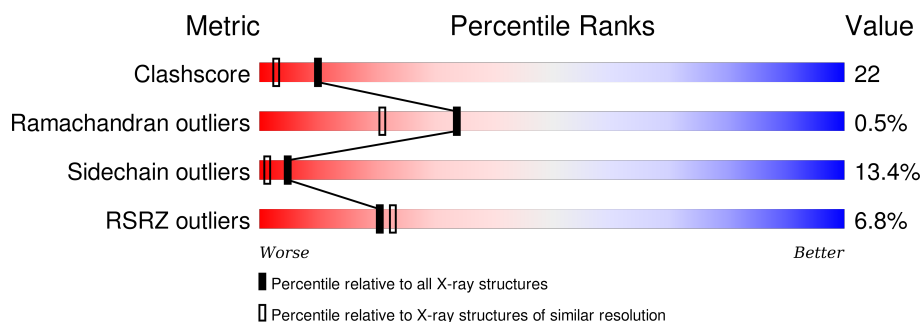
1 Overall quality at a glance

The following experimental techniques were used to determine the structure:

X-RAY DIFFRACTION

The reported resolution of this entry is 1.90 Å.

Percentile scores (ranging between 0-100) for global validation metrics of the entry are shown in the following graphic. The table shows the number of entries on which the scores are based.



Metric	Whole archive (#Entries)	Similar resolution (#Entries, resolution range(Å))
Clashscore	102246	5398 (1.90-1.90)
Ramachandran outliers	100387	5338 (1.90-1.90)
Sidechain outliers	100360	5339 (1.90-1.90)
RSRZ outliers	91569	4766 (1.90-1.90)

The table below summarises the geometric issues observed across the polymeric chains and their fit to the electron density. The red, orange, yellow and green segments on the lower bar indicate the fraction of residues that contain outliers for ≥ 3 , 2, 1 and 0 types of geometric quality criteria. A grey segment represents the fraction of residues that are not modelled. The numeric value for each fraction is indicated below the corresponding segment, with a dot representing fractions $\leq 5\%$. The upper red bar (where present) indicates the fraction of residues that have poor fit to the electron density. The numeric value is given above the bar.

Mol	Chain	Length	Quality of chain
1	A	206	

2 Entry composition [i](#)

There are 4 unique types of molecules in this entry. The entry contains 1836 atoms, of which 0 are hydrogens and 0 are deuteriums.

In the tables below, the ZeroOcc column contains the number of atoms modelled with zero occupancy, the AltConf column contains the number of residues with at least one atom in alternate conformation and the Trace column contains the number of residues modelled with at most 2 atoms.

- Molecule 1 is a protein called DIHYDROFOLATE REDUCTASE.

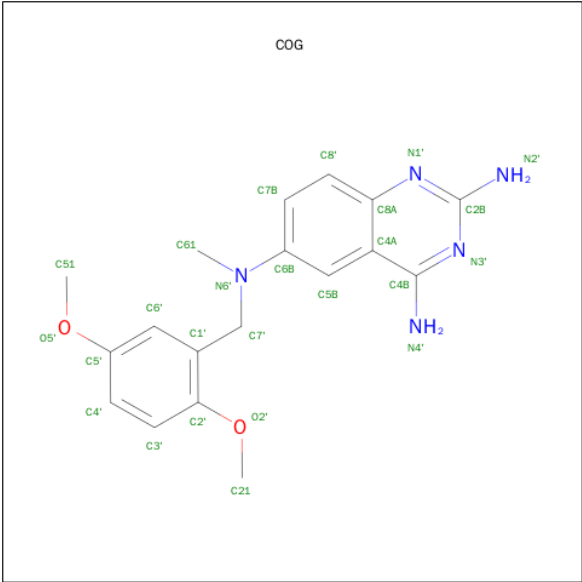
Mol	Chain	Residues	Atoms					ZeroOcc	AltConf	Trace
			Total	C	N	O	S			
1	A	206	1686	1086	288	305	7	0	0	0

- Molecule 2 is NADP NICOTINAMIDE-ADENINE-DINUCLEOTIDE PHOSPHATE (three-letter code: NAP) (formula: C₂₁H₂₈N₇O₁₇P₃).



Mol	Chain	Residues	Atoms					ZeroOcc	AltConf
			Total	C	N	O	P		
2	A	1	48	21	7	17	3	0	0

- Molecule 3 is 2,4-DIAMINO-6-[N-(2',5'-DIMETHOXYBENZYL)-N-METHYLAMINO]QUINAZOLINE (three-letter code: COG) (formula: C₁₈H₂₁N₅O₂).



Mol	Chain	Residues	Atoms				ZeroOcc	AltConf
3	A	1	Total	C	N	O	0	0
			25	18	5	2		

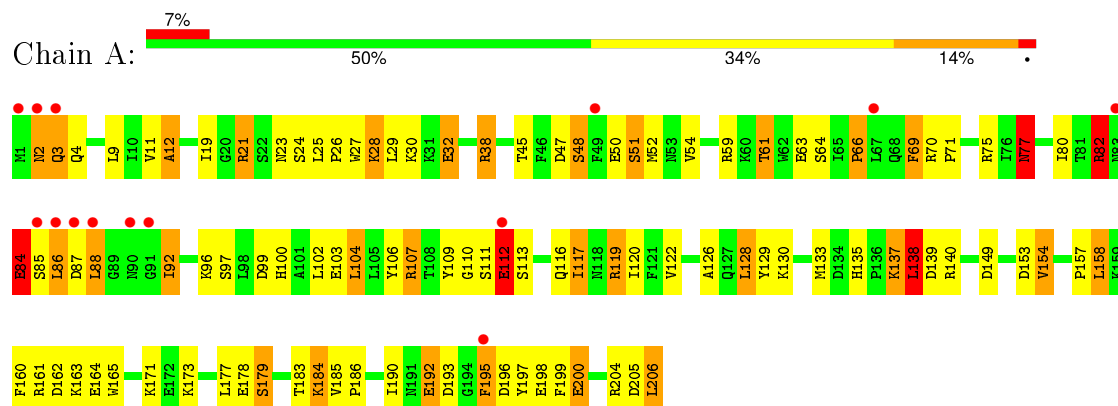
- Molecule 4 is water.

Mol	Chain	Residues	Atoms		ZeroOcc	AltConf
4	A	77	Total	O	0	0
			77	77		

3 Residue-property plots

These plots are drawn for all protein, RNA and DNA chains in the entry. The first graphic for a chain summarises the proportions of errors displayed in the second graphic. The second graphic shows the sequence view annotated by issues in geometry and electron density. Residues are color-coded according to the number of geometric quality criteria for which they contain at least one outlier: green = 0, yellow = 1, orange = 2 and red = 3 or more. A red dot above a residue indicates a poor fit to the electron density ($RSRZ > 2$). Stretches of 2 or more consecutive residues without any outlier are shown as a green connector. Residues present in the sample, but not in the model, are shown in grey.

• Molecule 1: DIHYDROFOLATE REDUCTASE



4 Data and refinement statistics

Property	Value	Source
Space group	P 1 21 1	Depositor
Cell constants a, b, c, α , β , γ	37.37Å 43.26Å 61.37Å 90.00° 94.77° 90.00°	Depositor
Resolution (Å)	8.00 – 1.90 35.32 – 1.90	Depositor EDS
% Data completeness (in resolution range)	88.3 (8.00-1.90) 85.4 (35.32-1.90)	Depositor EDS
R_{merge}	(Not available)	Depositor
R_{sym}	(Not available)	Depositor
$\langle I/\sigma(I) \rangle$ ¹	1.29 (at 1.89Å)	Xtriage
Refinement program	PROLSQ	Depositor
R, R_{free}	0.178 , (Not available) 0.193 , (Not available)	Depositor DCC
R_{free} test set	No test flags present.	DCC
Wilson B-factor (Å ²)	22.8	Xtriage
Anisotropy	0.200	Xtriage
Bulk solvent k_{sol} (e/Å ³), B_{sol} (Å ²)	0.29 , 66.2	EDS
Estimated twinning fraction	No twinning to report.	Xtriage
L-test for twinning ²	$\langle L \rangle = 0.49$, $\langle L^2 \rangle = 0.32$	Xtriage
Outliers	0 of 13776 reflections	Xtriage
F_o, F_c correlation	0.95	EDS
Total number of atoms	1836	wwPDB-VP
Average B, all atoms (Å ²)	24.0	wwPDB-VP

Xtriage's analysis on translational NCS is as follows: *The largest off-origin peak in the Patterson function is 8.70% of the height of the origin peak. No significant pseudotranslation is detected.*

¹Intensities estimated from amplitudes.

²Theoretical values of $\langle |L| \rangle$, $\langle L^2 \rangle$ for acentric reflections are 0.5, 0.375 respectively for untwinned datasets, and 0.333, 0.2 for perfectly twinned datasets.

5 Model quality [i](#)

5.1 Standard geometry [i](#)

Bond lengths and bond angles in the following residue types are not validated in this section: NAP, COG

The Z score for a bond length (or angle) is the number of standard deviations the observed value is removed from the expected value. A bond length (or angle) with $|Z| > 5$ is considered an outlier worth inspection. RMSZ is the root-mean-square of all Z scores of the bond lengths (or angles).

Mol	Chain	Bond lengths		Bond angles	
		RMSZ	$\# Z > 5$	RMSZ	$\# Z > 5$
1	A	1.12	5/1728 (0.3%)	2.26	68/2330 (2.9%)

Chiral center outliers are detected by calculating the chiral volume of a chiral center and verifying if the center is modelled as a planar moiety or with the opposite hand. A planarity outlier is detected by checking planarity of atoms in a peptide group, atoms in a mainchain group or atoms of a sidechain that are expected to be planar.

Mol	Chain	#Chirality outliers	#Planarity outliers
1	A	0	1

All (5) bond length outliers are listed below:

Mol	Chain	Res	Type	Atoms	Z	Observed(Å)	Ideal(Å)
1	A	48	SER	C-N	7.30	1.50	1.34
1	A	87	ASP	C-N	-7.16	1.17	1.34
1	A	192	GLU	CD-OE1	-7.05	1.17	1.25
1	A	200	GLU	CD-OE1	-6.64	1.18	1.25
1	A	198	GLU	CD-OE1	-6.09	1.19	1.25

All (68) bond angle outliers are listed below:

Mol	Chain	Res	Type	Atoms	Z	Observed(°)	Ideal(°)
1	A	140	ARG	NE-CZ-NH1	22.16	131.38	120.30
1	A	75	ARG	CD-NE-CZ	17.83	148.56	123.60
1	A	119	ARG	NE-CZ-NH1	15.25	127.93	120.30
1	A	75	ARG	NE-CZ-NH1	14.60	127.60	120.30
1	A	139	ASP	CB-CG-OD1	14.03	130.93	118.30
1	A	205	ASP	CB-CG-OD1	13.97	130.87	118.30
1	A	119	ARG	NE-CZ-NH2	-13.32	113.64	120.30
1	A	107	ARG	NE-CZ-NH1	-12.20	114.20	120.30

Continued on next page...

Continued from previous page...

Mol	Chain	Res	Type	Atoms	Z	Observed(°)	Ideal(°)
1	A	21	ARG	CD-NE-CZ	11.97	140.36	123.60
1	A	140	ARG	NH1-CZ-NH2	-10.77	107.55	119.40
1	A	162	ASP	CB-CG-OD1	9.95	127.25	118.30
1	A	204	ARG	NE-CZ-NH1	-9.94	115.33	120.30
1	A	99	ASP	CB-CG-OD2	-9.84	109.45	118.30
1	A	149	ASP	CB-CG-OD1	9.78	127.10	118.30
1	A	107	ARG	CD-NE-CZ	8.95	136.13	123.60
1	A	198	GLU	N-CA-CB	-8.84	94.68	110.60
1	A	162	ASP	CB-CG-OD2	-8.21	110.91	118.30
1	A	12	ALA	N-CA-CB	7.62	120.76	110.10
1	A	75	ARG	NE-CZ-NH2	-7.61	116.50	120.30
1	A	161	ARG	NE-CZ-NH2	7.54	124.07	120.30
1	A	205	ASP	CB-CG-OD2	-7.50	111.55	118.30
1	A	199	PHE	CB-CG-CD2	-7.27	115.71	120.80
1	A	138	LEU	CB-CA-C	7.25	123.98	110.20
1	A	198	GLU	CG-CD-OE2	-7.24	103.81	118.30
1	A	199	PHE	CB-CG-CD1	7.16	125.81	120.80
1	A	196	ASP	CB-CG-OD1	6.98	124.58	118.30
1	A	129	TYR	CD1-CE1-CZ	-6.88	113.61	119.80
1	A	87	ASP	CB-CG-OD1	6.85	124.47	118.30
1	A	85	SER	CB-CA-C	6.73	122.89	110.10
1	A	198	GLU	CG-CD-OE1	6.73	131.76	118.30
1	A	109	TYR	CB-CG-CD1	-6.58	117.05	121.00
1	A	204	ARG	NE-CZ-NH2	6.57	123.58	120.30
1	A	32	GLU	OE1-CD-OE2	6.48	131.07	123.30
1	A	21	ARG	CG-CD-NE	6.33	125.09	111.80
1	A	21	ARG	CA-CB-CG	6.27	127.19	113.40
1	A	112	GLU	CA-CB-CG	6.22	127.08	113.40
1	A	38	ARG	CA-CB-CG	6.14	126.91	113.40
1	A	107	ARG	NE-CZ-NH2	6.11	123.35	120.30
1	A	161	ARG	NH1-CZ-NH2	-6.04	112.75	119.40
1	A	153	ASP	CB-CG-OD2	6.02	123.72	118.30
1	A	63	GLU	CG-CD-OE2	-5.99	106.33	118.30
1	A	84	GLU	N-CA-C	-5.87	95.14	111.00
1	A	158	LEU	CB-CA-C	5.86	121.33	110.20
1	A	52	MET	CG-SD-CE	-5.79	90.93	100.20
1	A	154	VAL	CG1-CB-CG2	-5.77	101.67	110.90
1	A	66	PRO	O-C-N	5.75	131.91	122.70
1	A	161	ARG	NE-CZ-NH1	5.75	123.17	120.30
1	A	82	ARG	NE-CZ-NH2	-5.74	117.43	120.30
1	A	48	SER	O-C-N	-5.72	113.55	122.70
1	A	139	ASP	OD1-CG-OD2	-5.66	112.56	123.30

Continued on next page...

Continued from previous page...

Mol	Chain	Res	Type	Atoms	Z	Observed(°)	Ideal(°)
1	A	99	ASP	O-C-N	5.60	131.66	122.70
1	A	160	PHE	CB-CG-CD2	-5.58	116.89	120.80
1	A	153	ASP	CB-CG-OD1	5.54	123.29	118.30
1	A	109	TYR	CB-CG-CD2	5.52	124.31	121.00
1	A	197	TYR	CB-CG-CD2	5.51	124.31	121.00
1	A	82	ARG	NE-CZ-NH1	5.49	123.04	120.30
1	A	153	ASP	OD1-CG-OD2	-5.44	112.96	123.30
1	A	179	SER	N-CA-CB	5.38	118.57	110.50
1	A	77	ASN	O-C-N	5.31	131.20	122.70
1	A	48	SER	C-N-CA	-5.25	108.58	121.70
1	A	173	LYS	CB-CA-C	-5.24	99.93	110.40
1	A	38	ARG	NE-CZ-NH1	5.18	122.89	120.30
1	A	92	ILE	O-C-N	5.14	130.93	122.70
1	A	70	ARG	NE-CZ-NH1	5.13	122.87	120.30
1	A	161	ARG	CD-NE-CZ	5.08	130.71	123.60
1	A	61	THR	CA-CB-OG1	-5.06	98.36	109.00
1	A	117	ILE	CA-CB-CG1	-5.06	101.38	111.00
1	A	85	SER	N-CA-C	-5.05	97.35	111.00

There are no chirality outliers.

All (1) planarity outliers are listed below:

Mol	Chain	Res	Type	Group
1	A	69	PHE	Mainchain

5.2 Too-close contacts

In the following table, the Non-H and H(model) columns list the number of non-hydrogen atoms and hydrogen atoms in the chain respectively. The H(added) column lists the number of hydrogen atoms added and optimized by MolProbity. The Clashes column lists the number of clashes within the asymmetric unit, whereas Symm-Clashes lists symmetry related clashes.

Mol	Chain	Non-H	H(model)	H(added)	Clashes	Symm-Clashes
1	A	1686	0	1692	76	1
2	A	48	0	25	4	0
3	A	25	0	21	2	0
4	A	77	0	0	5	0
All	All	1836	0	1738	77	1

The all-atom clashscore is defined as the number of clashes found per 1000 atoms (including hydrogen atoms). The all-atom clashscore for this structure is 22.

All (77) close contacts within the same asymmetric unit are listed below, sorted by their clash magnitude.

Atom-1	Atom-2	Interatomic distance (Å)	Clash overlap (Å)
1:A:82:ARG:HH11	1:A:82:ARG:HG3	1.09	1.13
1:A:82:ARG:NH1	1:A:82:ARG:HG3	1.69	0.89
1:A:28:LYS:HG2	1:A:28:LYS:O	1.71	0.86
1:A:104:LEU:HD12	1:A:104:LEU:O	1.76	0.85
1:A:66:PRO:HB2	1:A:69:PHE:CD2	2.13	0.83
1:A:104:LEU:HD12	1:A:104:LEU:C	2.00	0.82
1:A:82:ARG:HH11	1:A:82:ARG:CG	1.88	0.82
1:A:23:ASN:HD22	2:A:207:NAP:H3D	1.47	0.80
1:A:23:ASN:ND2	2:A:207:NAP:H3D	1.97	0.79
1:A:66:PRO:HB2	1:A:69:PHE:HD2	1.49	0.75
1:A:135:HIS:HD2	1:A:137:LYS:H	1.31	0.75
1:A:84:GLU:O	1:A:84:GLU:OE1	2.05	0.75
1:A:117:ILE:HG21	1:A:120:ILE:HD11	1.67	0.74
1:A:28:LYS:CG	1:A:28:LYS:O	2.37	0.72
1:A:112:GLU:O	1:A:112:GLU:OE2	2.07	0.72
1:A:26:PRO:HG2	1:A:27:TRP:CE3	2.25	0.71
1:A:171:LYS:NZ	1:A:200:GLU:OE2	2.26	0.68
1:A:54:VAL:HG21	1:A:117:ILE:HD13	1.77	0.67
1:A:107:ARG:HG2	4:A:220:HOH:O	1.97	0.65
1:A:130:LYS:HG2	1:A:157:PRO:HB3	1.78	0.64
1:A:117:ILE:CG2	1:A:120:ILE:HD11	2.28	0.64
1:A:96:LYS:HE2	1:A:100:HIS:CE1	2.32	0.63
1:A:135:HIS:CD2	1:A:137:LYS:H	2.15	0.62
1:A:122:VAL:HG13	1:A:128:LEU:HD13	1.82	0.60
1:A:88:LEU:C	1:A:88:LEU:HD23	2.22	0.59
1:A:186:PRO:HB2	1:A:190:ILE:HD11	1.85	0.59
1:A:164:GLU:HG3	1:A:165:TRP:CD1	2.38	0.58
1:A:45:THR:HA	1:A:48:SER:OG	2.02	0.58
1:A:104:LEU:CD1	1:A:104:LEU:C	2.73	0.57
1:A:50:GLU:HG2	1:A:51:SER:N	2.20	0.56
1:A:3:GLN:HA	1:A:106:TYR:HE2	1.70	0.56
1:A:84:GLU:O	1:A:84:GLU:CD	2.45	0.55
1:A:177:LEU:HD23	1:A:177:LEU:C	2.27	0.55
1:A:71:PRO:HG3	1:A:92:ILE:HD11	1.89	0.55
1:A:126:ALA:HB2	1:A:154:VAL:CG1	2.37	0.55
1:A:192:GLU:O	1:A:193:ASP:HB2	2.07	0.55
1:A:29:LEU:HD11	1:A:195:PHE:CD1	2.43	0.54
1:A:88:LEU:HA	4:A:247:HOH:O	2.08	0.53
1:A:110:GLY:O	1:A:113:SER:N	2.40	0.53
1:A:9:LEU:HB2	1:A:138:LEU:HD21	1.91	0.53

Continued on next page...

Continued from previous page...

Atom-1	Atom-2	Interatomic distance (Å)	Clash overlap (Å)
1:A:185:VAL:HG13	1:A:186:PRO:HD2	1.91	0.53
1:A:61:THR:O	1:A:64:SER:HB2	2.09	0.52
1:A:133:MET:HE3	1:A:158:LEU:HD22	1.92	0.52
1:A:130:LYS:HG2	1:A:157:PRO:CB	2.40	0.52
1:A:185:VAL:CG1	1:A:186:PRO:HD2	2.40	0.51
1:A:133:MET:CE	1:A:158:LEU:HD22	2.42	0.50
1:A:66:PRO:CB	1:A:69:PHE:HD2	2.21	0.50
1:A:69:PHE:CB	3:A:307:COG:H513	2.42	0.50
1:A:19:ILE:O	2:A:207:NAP:H2N	2.12	0.50
1:A:178:GLU:HG2	1:A:184:LYS:HA	1.94	0.50
1:A:2:ASN:O	1:A:102:LEU:HB3	2.14	0.48
1:A:47:ASP:HA	1:A:50:GLU:OE2	2.14	0.48
1:A:185:VAL:HA	1:A:186:PRO:HD3	1.79	0.47
1:A:3:GLN:HA	1:A:106:TYR:CE2	2.50	0.47
1:A:77:ASN:HD22	1:A:77:ASN:N	2.11	0.47
1:A:107:ARG:CG	4:A:220:HOH:O	2.59	0.47
1:A:54:VAL:HB	1:A:120:ILE:HD12	1.96	0.47
3:A:307:COG:H5'	3:A:307:COG:H612	1.57	0.47
1:A:19:ILE:HD11	1:A:126:ALA:HB2	1.97	0.47
1:A:103:GLU:CG	4:A:253:HOH:O	2.64	0.45
1:A:2:ASN:O	1:A:106:TYR:CE2	2.69	0.45
1:A:110:GLY:O	1:A:112:GLU:N	2.50	0.45
1:A:2:ASN:O	1:A:106:TYR:HE2	2.00	0.44
1:A:29:LEU:HB3	1:A:32:GLU:HB2	1.98	0.44
1:A:113:SER:O	1:A:116:GLN:NE2	2.49	0.44
1:A:171:LYS:HZ2	1:A:200:GLU:CD	2.20	0.43
1:A:11:VAL:HG22	1:A:12:ALA:N	2.34	0.43
1:A:80:ILE:O	2:A:207:NAP:H1B	2.19	0.43
1:A:84:GLU:HG2	4:A:249:HOH:O	2.18	0.42
1:A:82:ARG:C	1:A:84:GLU:H	2.23	0.42
1:A:119:ARG:C	1:A:120:ILE:HD13	2.39	0.42
1:A:178:GLU:HG2	1:A:185:VAL:H	1.85	0.42
1:A:137:LYS:HA	1:A:137:LYS:HE2	2.02	0.42
1:A:97:SER:OG	1:A:100:HIS:HD2	2.03	0.41
1:A:137:LYS:CE	1:A:137:LYS:HA	2.51	0.40
1:A:25:LEU:HA	1:A:26:PRO:HD2	1.85	0.40
1:A:86:LEU:HD12	1:A:86:LEU:O	2.21	0.40

All (1) symmetry-related close contacts are listed below. The label for Atom-2 includes the symmetry operator and encoded unit-cell translations to be applied.

Atom-1	Atom-2	Interatomic distance (Å)	Clash overlap (Å)
1:A:163:LYS:NZ	1:A:206:LEU:O[2_546]	1.84	0.36

5.3 Torsion angles [i](#)

5.3.1 Protein backbone [i](#)

In the following table, the Percentiles column shows the percent Ramachandran outliers of the chain as a percentile score with respect to all X-ray entries followed by that with respect to entries of similar resolution.

The Analysed column shows the number of residues for which the backbone conformation was analysed, and the total number of residues.

Mol	Chain	Analysed	Favoured	Allowed	Outliers	Percentiles
1	A	204/206 (99%)	191 (94%)	12 (6%)	1 (0%)	34 21

All (1) Ramachandran outliers are listed below:

Mol	Chain	Res	Type
1	A	111	SER

5.3.2 Protein sidechains [i](#)

In the following table, the Percentiles column shows the percent sidechain outliers of the chain as a percentile score with respect to all X-ray entries followed by that with respect to entries of similar resolution.

The Analysed column shows the number of residues for which the sidechain conformation was analysed, and the total number of residues.

Mol	Chain	Analysed	Rotameric	Outliers	Percentiles
1	A	187/187 (100%)	162 (87%)	25 (13%)	5 1

All (25) residues with a non-rotameric sidechain are listed below:

Mol	Chain	Res	Type
1	A	2	ASN
1	A	3	GLN
1	A	4	GLN
1	A	21	ARG
1	A	24	SER

Continued on next page...

Continued from previous page...

Mol	Chain	Res	Type
1	A	28	LYS
1	A	30	LYS
1	A	38	ARG
1	A	51	SER
1	A	59	ARG
1	A	77	ASN
1	A	82	ARG
1	A	84	GLU
1	A	86	LEU
1	A	88	LEU
1	A	104	LEU
1	A	112	GLU
1	A	128	LEU
1	A	137	LYS
1	A	138	LEU
1	A	179	SER
1	A	183	THR
1	A	184	LYS
1	A	195	PHE
1	A	206	LEU

Some sidechains can be flipped to improve hydrogen bonding and reduce clashes. All (4) such sidechains are listed below:

Mol	Chain	Res	Type
1	A	23	ASN
1	A	100	HIS
1	A	135	HIS
1	A	187	HIS

5.3.3 RNA ⓘ

There are no RNA molecules in this entry.

5.4 Non-standard residues in protein, DNA, RNA chains ⓘ

There are no non-standard protein/DNA/RNA residues in this entry.

5.5 Carbohydrates ⓘ

There are no carbohydrates in this entry.

5.6 Ligand geometry

2 ligands are modelled in this entry.

In the following table, the Counts columns list the number of bonds (or angles) for which Mogul statistics could be retrieved, the number of bonds (or angles) that are observed in the model and the number of bonds (or angles) that are defined in the chemical component dictionary. The Link column lists molecule types, if any, to which the group is linked. The Z score for a bond length (or angle) is the number of standard deviations the observed value is removed from the expected value. A bond length (or angle) with $|Z| > 2$ is considered an outlier worth inspection. RMSZ is the root-mean-square of all Z scores of the bond lengths (or angles).

Mol	Type	Chain	Res	Link	Bond lengths			Bond angles		
					Counts	RMSZ	# Z > 2	Counts	RMSZ	# Z > 2
2	NAP	A	207	-	42,52,52	2.89	18 (42%)	54,80,80	3.28	27 (50%)
3	COG	A	307	-	27,27,27	1.72	4 (14%)	35,38,38	3.42	15 (42%)

In the following table, the Chirals column lists the number of chiral outliers, the number of chiral centers analysed, the number of these observed in the model and the number defined in the chemical component dictionary. Similar counts are reported in the Torsion and Rings columns. '-' means no outliers of that kind were identified.

Mol	Type	Chain	Res	Link	Chirals	Torsions	Rings
2	NAP	A	207	-	-	0/27/67/67	0/5/5/5
3	COG	A	307	-	-	0/12/12/12	0/3/3/3

All (22) bond length outliers are listed below:

Mol	Chain	Res	Type	Atoms	Z	Observed(Å)	Ideal(Å)
2	A	207	NAP	O4B-C4B	-7.72	1.27	1.45
3	A	307	COG	C4B-C4A	-5.59	1.41	1.45
2	A	207	NAP	C5A-C4A	-3.82	1.31	1.40
2	A	207	NAP	P2B-O2X	-3.01	1.43	1.54
2	A	207	NAP	C6N-C5N	-2.91	1.32	1.38
2	A	207	NAP	PN-O1N	-2.86	1.40	1.51
2	A	207	NAP	PA-O2A	-2.57	1.44	1.54
2	A	207	NAP	C8A-N7A	-2.35	1.30	1.34
2	A	207	NAP	O7N-C7N	-2.35	1.19	1.24
2	A	207	NAP	PN-O2N	-2.09	1.46	1.54
3	A	307	COG	C4B-N4'	2.12	1.41	1.34
2	A	207	NAP	PA-O5B	2.29	1.69	1.59
2	A	207	NAP	O4D-C4D	2.49	1.50	1.45
2	A	207	NAP	C7N-N7N	2.71	1.38	1.33
3	A	307	COG	C2B-N3'	3.54	1.41	1.35
3	A	307	COG	C2B-N2'	3.60	1.41	1.34

Continued on next page...

Continued from previous page...

Mol	Chain	Res	Type	Atoms	Z	Observed(Å)	Ideal(Å)
2	A	207	NAP	C3B-C4B	3.90	1.63	1.53
2	A	207	NAP	O3B-C3B	3.92	1.52	1.43
2	A	207	NAP	O4D-C1D	4.10	1.46	1.41
2	A	207	NAP	P2B-O2B	5.27	1.76	1.60
2	A	207	NAP	C5N-C4N	5.34	1.49	1.38
2	A	207	NAP	C4N-C3N	8.72	1.54	1.39

All (42) bond angle outliers are listed below:

Mol	Chain	Res	Type	Atoms	Z	Observed(°)	Ideal(°)
2	A	207	NAP	C5N-C4N-C3N	-9.13	108.86	120.33
2	A	207	NAP	O7N-C7N-C3N	-8.76	110.02	119.59
3	A	307	COG	C5B-C6B-N6'	-6.52	112.23	121.22
3	A	307	COG	C61-N6'-C6B	-5.38	110.33	119.56
3	A	307	COG	N1'-C2B-N3'	-4.88	120.01	127.44
2	A	207	NAP	O2B-P2B-O1X	-4.61	95.60	107.11
2	A	207	NAP	C4D-O4D-C1D	-4.60	104.66	109.72
3	A	307	COG	C7B-C8'-C8A	-4.02	116.52	120.88
3	A	307	COG	C5B-C4A-C4B	-3.76	121.68	124.74
3	A	307	COG	O2'-C2'-C3'	-3.73	118.07	124.35
2	A	207	NAP	O3B-C3B-C4B	-3.67	100.04	111.05
2	A	207	NAP	C3N-C7N-N7N	-3.01	114.53	117.82
2	A	207	NAP	O5B-PA-O1A	-2.97	98.09	109.62
2	A	207	NAP	O2D-C2D-C3D	-2.92	102.32	111.83
2	A	207	NAP	O4B-C1B-C2B	-2.87	101.41	106.60
2	A	207	NAP	C3B-C2B-C1B	-2.86	97.20	102.73
2	A	207	NAP	C2B-C3B-C4B	-2.60	95.71	101.85
2	A	207	NAP	C5B-C4B-C3B	-2.38	105.74	115.21
2	A	207	NAP	O3X-P2B-O1X	-2.37	102.95	110.58
2	A	207	NAP	O4D-C1D-N1N	-2.37	105.53	108.13
2	A	207	NAP	O5D-C5D-C4D	-2.34	100.48	109.12
2	A	207	NAP	O3-PA-O5B	-2.23	97.03	102.94
2	A	207	NAP	O5B-C5B-C4B	-2.17	101.10	109.12
3	A	307	COG	C4A-C8A-N1'	-2.12	120.83	122.90
2	A	207	NAP	O2B-C2B-C3B	2.21	120.10	111.51
3	A	307	COG	C4A-C4B-N4'	2.34	123.81	121.11
3	A	307	COG	C8'-C8A-C4A	2.45	121.84	119.07
2	A	207	NAP	O2X-P2B-O1X	2.72	119.34	110.58
2	A	207	NAP	N3A-C2A-N1A	3.37	131.47	128.89
2	A	207	NAP	PN-O3-PA	3.41	142.30	132.73
3	A	307	COG	C7B-C6B-N6'	3.86	127.53	121.68
2	A	207	NAP	C6N-C5N-C4N	3.87	125.30	119.44

Continued on next page...

Continued from previous page...

Mol	Chain	Res	Type	Atoms	Z	Observed(°)	Ideal(°)
3	A	307	COG	C51-O5'-C5'	4.02	126.92	117.51
2	A	207	NAP	O2A-PA-O3	4.34	124.80	105.09
3	A	307	COG	C61-N6'-C7'	4.87	127.44	114.23
3	A	307	COG	C4B-C4A-C8A	5.24	118.91	115.78
2	A	207	NAP	O3X-P2B-O2X	5.26	127.39	107.38
2	A	207	NAP	C4B-O4B-C1B	5.34	115.58	109.72
3	A	307	COG	O2'-C2'-C1'	5.61	123.03	115.83
2	A	207	NAP	C2N-C3N-C4N	6.17	125.16	118.29
2	A	207	NAP	O7N-C7N-N7N	9.13	135.45	122.59
3	A	307	COG	C21-O2'-C2'	10.99	134.21	117.54

There are no chirality outliers.

There are no torsion outliers.

There are no ring outliers.

2 monomers are involved in 6 short contacts:

Mol	Chain	Res	Type	Clashes	Symm-Clashes
2	A	207	NAP	4	0
3	A	307	COG	2	0

5.7 Other polymers [i](#)

There are no such residues in this entry.

5.8 Polymer linkage issues [i](#)

There are no chain breaks in this entry.

6 Fit of model and data [i](#)

6.1 Protein, DNA and RNA chains [i](#)

In the following table, the column labelled ‘#RSRZ> 2’ contains the number (and percentage) of RSRZ outliers, followed by percent RSRZ outliers for the chain as percentile scores relative to all X-ray entries and entries of similar resolution. The OWAB column contains the minimum, median, 95th percentile and maximum values of the occupancy-weighted average B-factor per residue. The column labelled ‘Q< 0.9’ lists the number of (and percentage) of residues with an average occupancy less than 0.9.

Mol	Chain	Analysed	<RSRZ>	#RSRZ>2		OWAB(Å ²)	Q<0.9
1	A	206/206 (100%)	0.28	14 (6%)	20 23	10, 22, 45, 48	0

All (14) RSRZ outliers are listed below:

Mol	Chain	Res	Type	RSRZ
1	A	2	ASN	9.9
1	A	1	MET	7.3
1	A	88	LEU	6.6
1	A	86	LEU	6.2
1	A	3	GLN	6.0
1	A	87	ASP	5.9
1	A	49	PHE	5.3
1	A	85	SER	4.2
1	A	112	GLU	3.9
1	A	195	PHE	3.6
1	A	90	ASN	3.5
1	A	91	GLY	2.9
1	A	67	LEU	2.5
1	A	83	ASN	2.5

6.2 Non-standard residues in protein, DNA, RNA chains [i](#)

There are no non-standard protein/DNA/RNA residues in this entry.

6.3 Carbohydrates [i](#)

There are no carbohydrates in this entry.

6.4 Ligands [i](#)

In the following table, the Atoms column lists the number of modelled atoms in the group and the number defined in the chemical component dictionary. LLDF column lists the quality of electron density of the group with respect to its neighbouring residues in protein, DNA or RNA chains. The B-factors column lists the minimum, median, 95th percentile and maximum values of B factors of atoms in the group. The column labelled 'Q< 0.9' lists the number of atoms with occupancy less than 0.9.

Mol	Type	Chain	Res	Atoms	RSCC	RSR	LLDF	B-factors(\AA^2)	Q<0.9
3	COG	A	307	25/25	0.91	0.12	0.74	8,23,36,37	0
2	NAP	A	207	48/48	0.95	0.09	-0.41	12,25,31,33	0

6.5 Other polymers [i](#)

There are no such residues in this entry.