



Full wwPDB X-ray Structure Validation Report ⓘ

Feb 1, 2016 – 06:32 PM GMT

PDB ID : 4LY3
Title : Crystal structure of WlaRD, a sugar 3N-formyl transferase in the presence of dTPD-Qui3N, dTDP-Qui3NFo, and THF
Authors : Thoden, J.B.; Goneau, M.-F.; Gilbert, M.; Holden, H.M.
Deposited on : 2013-07-30
Resolution : 1.90 Å(reported)

This is a Full wwPDB X-ray Structure Validation Report for a publicly released PDB entry.
We welcome your comments at validation@mail.wwpdb.org
A user guide is available at
<http://wwpdb.org/validation/2016/XrayValidationReportHelp>
with specific help available everywhere you see the ⓘ symbol.

The following versions of software and data (see [references ⓘ](#)) were used in the production of this report:

MolProbity : 4.02b-467
Mogul : 1.7 (RC4), CSD as536be (2015)
Xtriage (Phenix) : 1.9-1692
EDS : rb-20026688
Percentile statistics : 20151230.v01 (using entries in the PDB archive December 30th 2015)
Refmac : 5.8.0135
CCP4 : 6.5.0
Ideal geometry (proteins) : Engh & Huber (2001)
Ideal geometry (DNA, RNA) : Parkinson et al. (1996)
Validation Pipeline (wwPDB-VP) : trunk26865

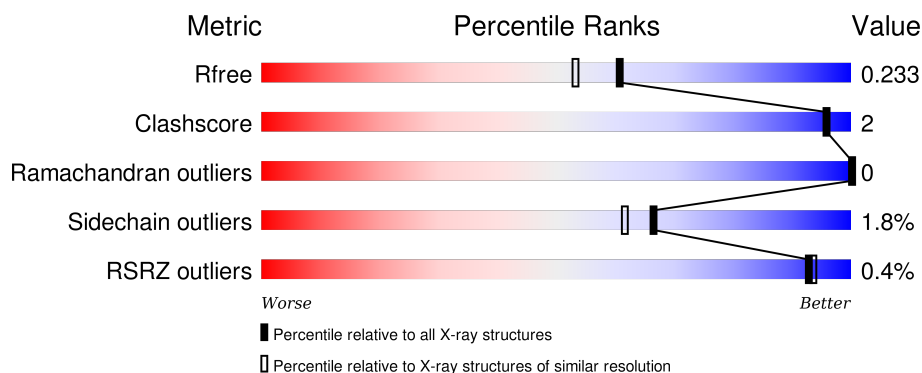
1 Overall quality at a glance

The following experimental techniques were used to determine the structure:

X-RAY DIFFRACTION

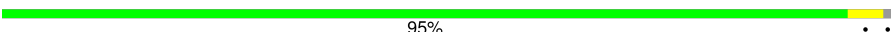

The reported resolution of this entry is 1.90 Å.

Percentile scores (ranging between 0-100) for global validation metrics of the entry are shown in the following graphic. The table shows the number of entries on which the scores are based.



Metric	Whole archive (#Entries)	Similar resolution (#Entries, resolution range(Å))
R_{free}	91344	4755 (1.90-1.90)
Clashscore	102246	5398 (1.90-1.90)
Ramachandran outliers	100387	5338 (1.90-1.90)
Sidechain outliers	100360	5339 (1.90-1.90)
RSRZ outliers	91569	4766 (1.90-1.90)

The table below summarises the geometric issues observed across the polymeric chains and their fit to the electron density. The red, orange, yellow and green segments on the lower bar indicate the fraction of residues that contain outliers for ≥ 3 , 2, 1 and 0 types of geometric quality criteria. A grey segment represents the fraction of residues that are not modelled. The numeric value for each fraction is indicated below the corresponding segment, with a dot representing fractions $\leq 5\%$. The upper red bar (where present) indicates the fraction of residues that have poor fit to the electron density. The numeric value is given above the bar.

Mol	Chain	Length	Quality of chain
1	A	274	 95%
1	B	274	 92% 7%

The following table lists non-polymeric compounds, carbohydrate monomers and non-standard residues in protein, DNA, RNA chains that are outliers for geometric or electron-density-fit criteria:

Mol	Type	Chain	Res	Chirality	Geometry	Clashes	Electron density
4	MPO	A	303	-	-	-	X
4	MPO	B	303	-	-	-	X

2 Entry composition [i](#)

There are 6 unique types of molecules in this entry. The entry contains 5254 atoms, of which 0 are hydrogens and 0 are deuteriums.

In the tables below, the ZeroOcc column contains the number of atoms modelled with zero occupancy, the AltConf column contains the number of residues with at least one atom in alternate conformation and the Trace column contains the number of residues modelled with at most 2 atoms.

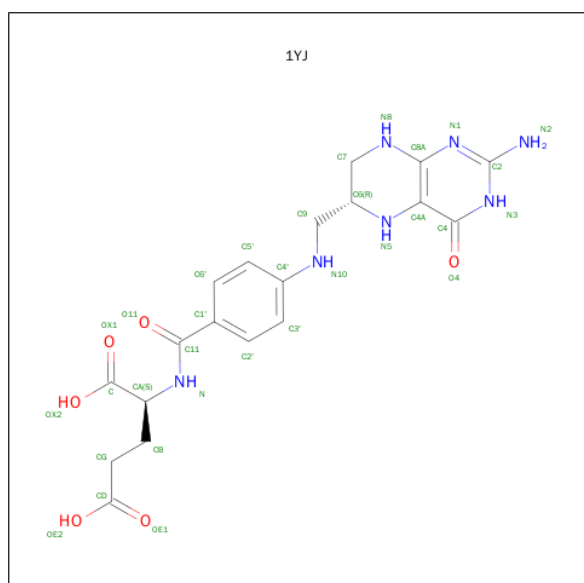
- Molecule 1 is a protein called WlaRD a sugar 3N formyltransferase.

Mol	Chain	Residues	Atoms					ZeroOcc	AltConf	Trace
1	A	271	Total	C	N	O	S	0	2	0
			2246	1462	368	413	3			
1	B	271	Total	C	N	O	S	0	1	0
			2237	1457	366	411	3			

There are 4 discrepancies between the modelled and reference sequences:

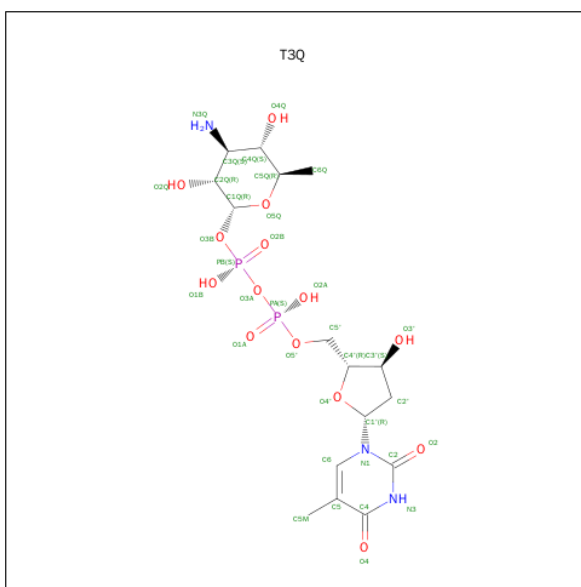
Chain	Residue	Modelled	Actual	Comment	Reference
A	-1	GLY	-	EXPRESSION TAG	UNP A8FMJ3
A	0	HIS	-	EXPRESSION TAG	UNP A8FMJ3
B	-1	GLY	-	EXPRESSION TAG	UNP A8FMJ3
B	0	HIS	-	EXPRESSION TAG	UNP A8FMJ3

- Molecule 2 is N-[4-({[(6R)-2-AMINO-4-OXO-3,4,5,6,7,8-HEXAHYDROPTERIDIN-6-YL]METHYL}AMINO)BENZOYL]-L-GLUTAMIC ACID (three-letter code: 1YJ) (formula: C₁₉H₂₃N₇O₆).



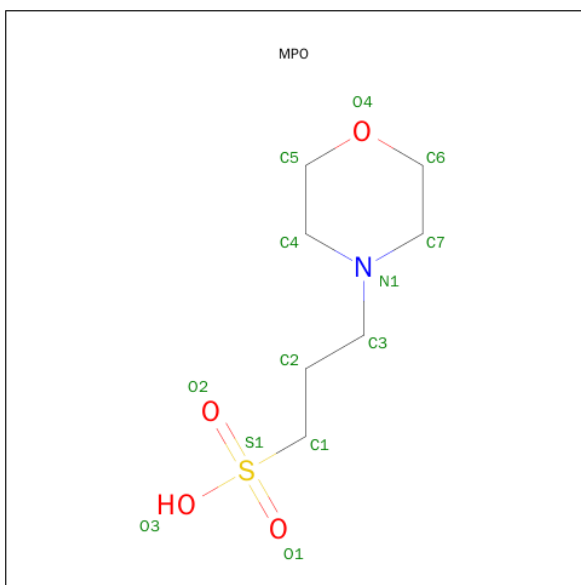
Mol	Chain	Residues	Atoms				ZeroOcc	AltConf
2	A	1	Total 32	C 19	N 7	O 6	0	0
2	B	1	Total 32	C 19	N 7	O 6	0	0

- Molecule 3 is [(3R,4S,5S,6R)-4-AMINO-3,5-DIHYDROXY-6-METHYLOXAN-2-YL][HYDROXY-[(2R,3S,5R)-3-HYDROXY-5-(5-METHYL-2,4-DIOXOPYRIMIDIN-1-YL)OXOLAN-2-YL]METHOXY]PHOSPHORYL] HYDROGEN PHOSPHATE (three-letter code: T3Q) (formula: C₁₆H₂₇N₃O₁₄P₂).



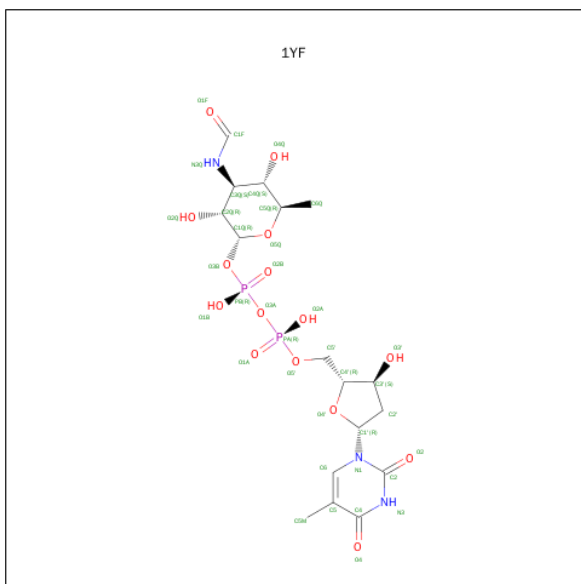
Mol	Chain	Residues	Atoms					ZeroOcc	AltConf
3	A	1	Total	C	N	O	P	0	0
			35	16	3	14	2		

- Molecule 4 is 3[N-MORPHOLINO]PROPANE SULFONIC ACID (three-letter code: MPO) (formula: C₇H₁₅NO₄S).



Mol	Chain	Residues	Atoms					ZeroOcc	AltConf
4	A	1	Total	C	N	O	S	0	0
			13	7	1	4	1		
4	B	1	Total	C	N	O	S	0	0
			13	7	1	4	1		

- Molecule 5 is [(2R,3R,4S,5S,6R)-4-FORMAMIDO-6-METHYL-3,5-BIS(OXIDANYL)OXAN-2-YL] [[[(2R,3S,5R)-5-[5-METHYL-2,4-BIS(OXIDANYLIDENE)PYRIMIDIN-1-YL]-3-OXIDANYL-OXOLAN-2-YL]METHOXY-OXIDANYL-PHOSPHORYL] HYDROGEN PHOSPHATE (three-letter code: 1YF) (formula: C₁₇H₂₇N₃O₁₅P₂).



Mol	Chain	Residues	Atoms					ZeroOcc	AltConf
5	B	1	Total	C	N	O	P	0	0
			37	17	3	15	2		

- Molecule 6 is water.

Mol	Chain	Residues	Atoms		ZeroOcc	AltConf
6	A	308	Total	O	0	0
			308	308		
6	B	301	Total	O	0	0
			301	301		

3 Residue-property plots [i](#)

These plots are drawn for all protein, RNA and DNA chains in the entry. The first graphic for a chain summarises the proportions of errors displayed in the second graphic. The second graphic shows the sequence view annotated by issues in geometry and electron density. Residues are color-coded according to the number of geometric quality criteria for which they contain at least one outlier: green = 0, yellow = 1, orange = 2 and red = 3 or more. A red dot above a residue indicates a poor fit to the electron density ($RSRZ > 2$). Stretches of 2 or more consecutive residues without any outlier are shown as a green connector. Residues present in the sample, but not in the model, are shown in grey.

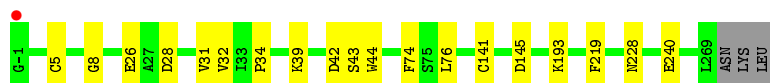
- Molecule 1: WlaRD a sugar 3N formyltransferase

Chain A:  95% ..



- Molecule 1: WlaRD a sugar 3N formyltransferase

Chain B:  92% 7% .



4 Data and refinement statistics

Property	Value	Source
Space group	C 1 2 1	Depositor
Cell constants a, b, c, α , β , γ	96.00Å 65.55Å 134.50Å 90.00° 109.83° 90.00°	Depositor
Resolution (Å)	50.00 – 1.90 63.26 – 1.89	Depositor EDS
% Data completeness (in resolution range)	91.9 (50.00-1.90) 92.0 (63.26-1.89)	Depositor EDS
R_{merge}	0.05	Depositor
R_{sym}	0.05	Depositor
$\langle I/\sigma(I) \rangle$ ¹	1.65 (at 1.88Å)	Xtriage
Refinement program	REFMAC 5.7.0029	Depositor
R, R_{free}	0.178 , 0.226 0.187 , 0.233	Depositor DCC
R_{free} test set	3141 reflections (5.73%)	DCC
Wilson B-factor (Å ²)	16.0	Xtriage
Anisotropy	0.071	Xtriage
Bulk solvent k_{sol} (e/Å ³), B_{sol} (Å ²)	0.34 , 47.5	EDS
Estimated twinning fraction	0.023 for h,-k,-h-l	Xtriage
L-test for twinning ²	$\langle L \rangle = 0.48$, $\langle L^2 \rangle = 0.31$	Xtriage
Outliers	0 of 58443 reflections	Xtriage
F_o, F_c correlation	0.94	EDS
Total number of atoms	5254	wwPDB-VP
Average B, all atoms (Å ²)	19.0	wwPDB-VP

Xtriage's analysis on translational NCS is as follows: *The largest off-origin peak in the Patterson function is 4.54% of the height of the origin peak. No significant pseudotranslation is detected.*

¹Intensities estimated from amplitudes.

²Theoretical values of $\langle |L| \rangle$, $\langle L^2 \rangle$ for acentric reflections are 0.5, 0.375 respectively for untwinned datasets, and 0.333, 0.2 for perfectly twinned datasets.

5 Model quality [i](#)

5.1 Standard geometry [i](#)

Bond lengths and bond angles in the following residue types are not validated in this section: MPO, 1YF, 1YJ, T3Q

The Z score for a bond length (or angle) is the number of standard deviations the observed value is removed from the expected value. A bond length (or angle) with $|Z| > 5$ is considered an outlier worth inspection. RMSZ is the root-mean-square of all Z scores of the bond lengths (or angles).

Mol	Chain	Bond lengths		Bond angles	
		RMSZ	$\# Z > 5$	RMSZ	$\# Z > 5$
1	A	0.65	0/2298	0.93	1/3100 (0.0%)
1	B	0.66	0/2286	0.94	2/3083 (0.1%)
All	All	0.66	0/4584	0.94	3/6183 (0.0%)

There are no bond length outliers.

All (3) bond angle outliers are listed below:

Mol	Chain	Res	Type	Atoms	Z	Observed(°)	Ideal(°)
1	B	28	ASP	CB-CG-OD2	5.88	123.59	118.30
1	A	151	ARG	NE-CZ-NH2	5.01	122.81	120.30
1	B	28	ASP	CB-CG-OD1	-5.01	113.79	118.30

There are no chirality outliers.

There are no planarity outliers.

5.2 Too-close contacts [i](#)

In the following table, the Non-H and H(model) columns list the number of non-hydrogen atoms and hydrogen atoms in the chain respectively. The H(added) column lists the number of hydrogen atoms added and optimized by MolProbity. The Clashes column lists the number of clashes within the asymmetric unit, whereas Symm-Clashes lists symmetry related clashes.

Mol	Chain	Non-H	H(model)	H(added)	Clashes	Symm-Clashes
1	A	2246	0	2266	3	0
1	B	2237	0	2257	10	0
2	A	32	0	21	0	0
2	B	32	0	21	0	0
3	A	35	0	25	0	0
4	A	13	0	15	0	0

Continued on next page...

Continued from previous page...

Mol	Chain	Non-H	H(model)	H(added)	Clashes	Symm-Clashes
4	B	13	0	15	1	0
5	B	37	0	25	1	0
6	A	308	0	0	1	0
6	B	301	0	0	6	2
All	All	5254	0	4645	14	2

The all-atom clashscore is defined as the number of clashes found per 1000 atoms (including hydrogen atoms). The all-atom clashscore for this structure is 2.

All (14) close contacts within the same asymmetric unit are listed below, sorted by their clash magnitude.

Atom-1	Atom-2	Interatomic distance (Å)	Clash overlap (Å)
5:B:302:IYF:H2	6:B:418:HOH:O	1.74	0.87
1:B:42:ASP:OD2	6:B:642:HOH:O	1.95	0.83
1:B:141:CYS:SG	6:B:490:HOH:O	2.48	0.72
1:B:240:GLU:OE1	6:B:622:HOH:O	2.10	0.68
1:A:18:GLN:NE2	6:A:638:HOH:O	2.42	0.51
1:B:26:GLU:HB3	6:B:569:HOH:O	2.10	0.50
1:B:43[B]:SER:OG	1:B:44:TRP:N	2.44	0.50
1:B:8:GLY:HA3	1:B:76:LEU:O	2.13	0.49
1:B:228:ASN:OD1	4:B:303:MPO:H12	2.18	0.43
1:A:81:ILE:HD12	1:A:131:ILE:HG12	2.01	0.42
1:B:32:VAL:HG23	1:B:34:PRO:HD3	2.02	0.41
1:A:61:THR:OG1	1:A:64:GLU:HG3	2.20	0.41
1:B:5:CYS:HA	1:B:31:VAL:O	2.21	0.41
1:B:145:ASP:HB3	6:B:595:HOH:O	2.21	0.40

All (2) symmetry-related close contacts are listed below. The label for Atom-2 includes the symmetry operator and encoded unit-cell translations to be applied.

Atom-1	Atom-2	Interatomic distance (Å)	Clash overlap (Å)
6:B:541:HOH:O	6:B:650:HOH:O[3_445]	2.15	0.05
6:B:416:HOH:O	6:B:650:HOH:O[3_445]	2.16	0.04

5.3 Torsion angles

5.3.1 Protein backbone

In the following table, the Percentiles column shows the percent Ramachandran outliers of the chain as a percentile score with respect to all X-ray entries followed by that with respect to entries of similar resolution.

The Analysed column shows the number of residues for which the backbone conformation was analysed, and the total number of residues.

Mol	Chain	Analysed	Favoured	Allowed	Outliers	Percentiles	
1	A	271/274 (99%)	258 (95%)	13 (5%)	0	100	100
1	B	270/274 (98%)	260 (96%)	10 (4%)	0	100	100
All	All	541/548 (99%)	518 (96%)	23 (4%)	0	100	100

There are no Ramachandran outliers to report.

5.3.2 Protein sidechains

In the following table, the Percentiles column shows the percent sidechain outliers of the chain as a percentile score with respect to all X-ray entries followed by that with respect to entries of similar resolution.

The Analysed column shows the number of residues for which the sidechain conformation was analysed, and the total number of residues.

Mol	Chain	Analysed	Rotameric	Outliers	Percentiles	
1	A	254/254 (100%)	249 (98%)	5 (2%)	63	57
1	B	252/254 (99%)	248 (98%)	4 (2%)	70	66
All	All	506/508 (100%)	497 (98%)	9 (2%)	66	61

All (9) residues with a non-rotameric sidechain are listed below:

Mol	Chain	Res	Type
1	A	58	LYS
1	A	74	PHE
1	A	172	ILE
1	A	219	PHE
1	A	239	ASN
1	B	39	LYS
1	B	74	PHE
1	B	193	LYS

Continued on next page...

Continued from previous page...

Mol	Chain	Res	Type
1	B	219	PHE

Some sidechains can be flipped to improve hydrogen bonding and reduce clashes. All (8) such sidechains are listed below:

Mol	Chain	Res	Type
1	A	18	GLN
1	A	80	GLN
1	A	94	ASN
1	A	140	HIS
1	A	239	ASN
1	B	67	ASN
1	B	80	GLN
1	B	94	ASN

5.3.3 RNA ⓘ

There are no RNA molecules in this entry.

5.4 Non-standard residues in protein, DNA, RNA chains ⓘ

There are no non-standard protein/DNA/RNA residues in this entry.

5.5 Carbohydrates ⓘ

There are no carbohydrates in this entry.

5.6 Ligand geometry ⓘ

6 ligands are modelled in this entry.

In the following table, the Counts columns list the number of bonds (or angles) for which Mogul statistics could be retrieved, the number of bonds (or angles) that are observed in the model and the number of bonds (or angles) that are defined in the chemical component dictionary. The Link column lists molecule types, if any, to which the group is linked. The Z score for a bond length (or angle) is the number of standard deviations the observed value is removed from the expected value. A bond length (or angle) with $|Z| > 2$ is considered an outlier worth inspection. RMSZ is the root-mean-square of all Z scores of the bond lengths (or angles).

Mol	Type	Chain	Res	Link	Bond lengths			Bond angles		
					Counts	RMSZ	# Z > 2	Counts	RMSZ	# Z > 2
2	1YJ	A	301	-	26,34,34	1.28	2 (7%)	28,47,47	2.01	9 (32%)
3	T3Q	A	302	-	29,37,37	1.05	2 (6%)	41,57,57	1.97	9 (21%)
4	MPO	A	303	-	12,13,13	0.81	0	15,17,17	2.85	6 (40%)
2	1YJ	B	301	-	26,34,34	1.17	2 (7%)	28,47,47	2.16	9 (32%)
5	1YF	B	302	-	31,39,39	1.38	3 (9%)	43,59,59	1.95	10 (23%)
4	MPO	B	303	-	12,13,13	0.79	0	15,17,17	2.96	7 (46%)

In the following table, the Chirals column lists the number of chiral outliers, the number of chiral centers analysed, the number of these observed in the model and the number defined in the chemical component dictionary. Similar counts are reported in the Torsion and Rings columns. '-' means no outliers of that kind were identified.

Mol	Type	Chain	Res	Link	Chirals	Torsions	Rings
2	1YJ	A	301	-	-	0/16/31/31	0/3/3/3
3	T3Q	A	302	-	-	0/17/53/53	0/3/3/3
4	MPO	A	303	-	-	0/7/15/15	0/1/1/1
2	1YJ	B	301	-	-	0/16/31/31	0/3/3/3
5	1YF	B	302	-	-	1/20/56/56	0/3/3/3
4	MPO	B	303	-	-	0/7/15/15	0/1/1/1

All (9) bond length outliers are listed below:

Mol	Chain	Res	Type	Atoms	Z	Observed(Å)	Ideal(Å)
3	A	302	T3Q	C6-C5	-3.67	1.30	1.40
3	A	302	T3Q	C6-N1	-2.30	1.31	1.35
5	B	302	1YF	O1F-C1F	2.31	1.30	1.22
2	A	301	1YJ	C7-C6	2.47	1.54	1.52
2	B	301	1YJ	C7-C6	3.00	1.55	1.52
2	B	301	1YJ	O4-C4	3.67	1.33	1.24
5	B	302	1YF	C1F-N3Q	3.94	1.48	1.33
5	B	302	1YF	O4-C4	4.92	1.36	1.24
2	A	301	1YJ	O4-C4	4.96	1.36	1.24

All (50) bond angle outliers are listed below:

Mol	Chain	Res	Type	Atoms	Z	Observed(°)	Ideal(°)
3	A	302	T3Q	C5-C4-N3	-6.08	118.37	125.14
2	B	301	1YJ	O11-C11-C1'	-5.17	112.13	120.97
3	A	302	T3Q	O4Q-C4Q-C3Q	-4.61	102.52	110.31
4	A	303	MPO	C6-C7-N1	-4.57	103.19	110.12
3	A	302	T3Q	O3A-PB-O3B	-4.44	90.85	103.63

Continued on next page...

Continued from previous page...

Mol	Chain	Res	Type	Atoms	Z	Observed(°)	Ideal(°)
5	B	302	1YF	C5-C4-N3	-4.22	120.44	125.14
2	B	301	1YJ	N3-C2-N1	-3.59	119.65	125.53
5	B	302	1YF	O3A-PB-O3B	-3.49	93.58	103.63
2	A	301	1YJ	O11-C11-C1'	-3.29	115.35	120.97
2	A	301	1YJ	C3'-C4'-N10	-3.12	115.09	121.06
2	B	301	1YJ	C9-C6-N5	-3.01	103.11	109.34
2	A	301	1YJ	C9-C6-N5	-2.57	104.03	109.34
4	B	303	MPO	C5-C4-N1	-2.48	106.37	110.12
3	A	302	T3Q	C5M-C5-C4	-2.47	116.86	120.05
4	A	303	MPO	O3-S1-O1	-2.22	106.45	111.61
4	B	303	MPO	O2-S1-O1	-2.15	105.65	113.48
5	B	302	1YF	O5Q-C1Q-O3B	-2.04	108.67	111.36
5	B	302	1YF	O4Q-C4Q-C3Q	-2.01	105.57	109.66
5	B	302	1YF	O1B-PB-O3A	2.04	114.33	105.09
2	B	301	1YJ	C4-C4A-C8A	2.15	116.51	114.56
3	A	302	T3Q	O4Q-C4Q-C5Q	2.16	114.90	109.84
5	B	302	1YF	PA-O3A-PB	2.19	138.88	132.73
4	A	303	MPO	O2-S1-C1	2.22	108.80	106.91
4	B	303	MPO	C3-N1-C4	2.24	117.01	111.27
5	B	302	1YF	C5M-C5-C6	2.27	123.18	118.62
3	A	302	T3Q	O2A-PA-O1A	2.40	125.52	112.53
2	A	301	1YJ	C8A-C4A-N5	2.44	121.93	118.85
2	B	301	1YJ	C2-N1-C8A	2.47	120.08	114.54
3	A	302	T3Q	O1B-PB-O2B	2.55	126.32	112.53
3	A	302	T3Q	O2A-PA-O3A	2.66	117.18	105.09
2	A	301	1YJ	C5'-C4'-N10	2.84	126.50	121.06
5	B	302	1YF	O5Q-C1Q-C2Q	2.85	116.13	110.28
2	B	301	1YJ	C4-N3-C2	2.92	119.99	115.94
4	B	303	MPO	C6-C7-N1	2.95	114.59	110.12
2	B	301	1YJ	N2-C2-N1	2.97	122.12	117.20
2	A	301	1YJ	C1'-C11-N	3.05	122.37	116.93
2	A	301	1YJ	C4A-C8A-N8	3.12	122.10	118.43
4	B	303	MPO	C3-N1-C7	3.18	119.42	111.27
2	A	301	1YJ	C4-N3-C2	3.43	120.69	115.94
2	B	301	1YJ	C8A-C4A-N5	3.64	123.43	118.85
5	B	302	1YF	O1F-C1F-N3Q	3.71	130.10	124.76
2	A	301	1YJ	C4-C4A-C8A	4.50	118.63	114.56
2	B	301	1YJ	C1'-C11-N	4.59	125.10	116.93
4	A	303	MPO	C7-N1-C4	4.59	118.84	108.90
3	A	302	T3Q	C4-N3-C2	4.84	119.43	115.25
4	A	303	MPO	O1-S1-C1	5.08	111.24	106.91
4	A	303	MPO	C3-N1-C7	5.35	124.99	111.27

Continued on next page...

Continued from previous page...

Mol	Chain	Res	Type	Atoms	Z	Observed($^{\circ}$)	Ideal($^{\circ}$)
4	B	303	MPO	O1-S1-C1	6.60	112.53	106.91
4	B	303	MPO	C7-N1-C4	6.76	123.53	108.90
5	B	302	1YF	C4-N3-C2	7.37	121.61	115.25

There are no chirality outliers.

All (1) torsion outliers are listed below:

Mol	Chain	Res	Type	Atoms
5	B	302	1YF	O1F-C1F-N3Q-C3Q

There are no ring outliers.

2 monomers are involved in 2 short contacts:

Mol	Chain	Res	Type	Clashes	Symm-Clashes
5	B	302	1YF	1	0
4	B	303	MPO	1	0

5.7 Other polymers [i](#)

There are no such residues in this entry.

5.8 Polymer linkage issues [i](#)

There are no chain breaks in this entry.

6 Fit of model and data [i](#)

6.1 Protein, DNA and RNA chains [i](#)

In the following table, the column labelled '#RSRZ > 2' contains the number (and percentage) of RSRZ outliers, followed by percent RSRZ outliers for the chain as percentile scores relative to all X-ray entries and entries of similar resolution. The OWAB column contains the minimum, median, 95th percentile and maximum values of the occupancy-weighted average B-factor per residue. The column labelled 'Q < 0.9' lists the number of (and percentage) of residues with an average occupancy less than 0.9.

Mol	Chain	Analysed	<RSRZ>	#RSRZ>2	OWAB(Å ²)	Q<0.9
1	A	271/274 (98%)	-0.58	1 (0%) 93 93	8, 16, 30, 55	0
1	B	271/274 (98%)	-0.52	1 (0%) 93 93	8, 15, 33, 63	0
All	All	542/548 (98%)	-0.55	2 (0%) 93 93	8, 16, 31, 63	0

All (2) RSRZ outliers are listed below:

Mol	Chain	Res	Type	RSRZ
1	A	270	ASN	3.1
1	B	-1	GLY	2.2

6.2 Non-standard residues in protein, DNA, RNA chains [i](#)

There are no non-standard protein/DNA/RNA residues in this entry.

6.3 Carbohydrates [i](#)

There are no carbohydrates in this entry.

6.4 Ligands [i](#)

In the following table, the Atoms column lists the number of modelled atoms in the group and the number defined in the chemical component dictionary. LLDF column lists the quality of electron density of the group with respect to its neighbouring residues in protein, DNA or RNA chains. The B-factors column lists the minimum, median, 95th percentile and maximum values of B factors of atoms in the group. The column labelled 'Q < 0.9' lists the number of atoms with occupancy less than 0.9.

Mol	Type	Chain	Res	Atoms	RSCC	RSR	LLDF	B-factors(Å ²)	Q<0.9
4	MPO	B	303	13/13	0.92	0.17	12.17	37,46,53,56	0

Continued on next page...

Continued from previous page...

Mol	Type	Chain	Res	Atoms	RSCC	RSR	LLDF	B-factors(\AA^2)	Q<0.9
4	MPO	A	303	13/13	0.88	0.16	2.77	40,45,63,70	0
3	T3Q	A	302	35/35	0.97	0.09	0.64	14,17,24,28	0
2	1YJ	A	301	32/32	0.95	0.09	0.51	12,19,33,39	0
5	1YF	B	302	37/37	0.97	0.08	0.42	12,16,25,30	0
2	1YJ	B	301	32/32	0.94	0.10	0.34	14,21,34,44	0

6.5 Other polymers [i](#)

There are no such residues in this entry.