



# Full wwPDB X-ray Structure Validation Report ⓘ

Feb 1, 2016 – 06:34 PM GMT

PDB ID : 4M09  
Title : Crystal Structure of Mutant Chlorite Dismutase from Candidatus Nitrospira defluvii W146Y R173Q  
Authors : Gysel, K.; Hagmueller, A.; Djinovic-Carugo, K.  
Deposited on : 2013-08-01  
Resolution : 2.45 Å(reported)

This is a Full wwPDB X-ray Structure Validation Report for a publicly released PDB entry.  
We welcome your comments at [validation@mail.wwpdb.org](mailto:validation@mail.wwpdb.org)  
A user guide is available at  
<http://wwpdb.org/validation/2016/XrayValidationReportHelp>  
with specific help available everywhere you see the ⓘ symbol.

---

The following versions of software and data (see [references ⓘ](#)) were used in the production of this report:

MolProbity : 4.02b-467  
Mogul : 1.7 (RC4), CSD as536be (2015)  
Xtriage (Phenix) : 1.9-1692  
EDS : rb-20026688  
Percentile statistics : 20151230.v01 (using entries in the PDB archive December 30th 2015)  
Refmac : 5.8.0135  
CCP4 : 6.5.0  
Ideal geometry (proteins) : Engh & Huber (2001)  
Ideal geometry (DNA, RNA) : Parkinson et al. (1996)  
Validation Pipeline (wwPDB-VP) : trunk26865

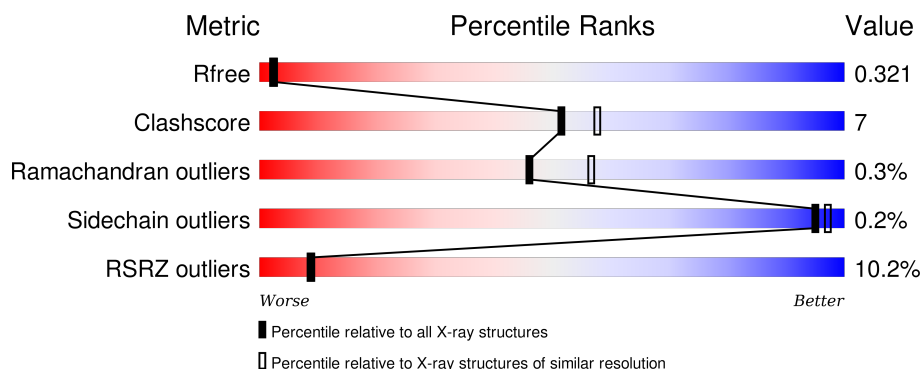
# 1 Overall quality at a glance

The following experimental techniques were used to determine the structure:

## *X-RAY DIFFRACTION*

The reported resolution of this entry is 2.45 Å.

Percentile scores (ranging between 0-100) for global validation metrics of the entry are shown in the following graphic. The table shows the number of entries on which the scores are based.



Metric	Whole archive (#Entries)	Similar resolution (#Entries, resolution range(Å))
$R_{free}$	91344	4776 (2.50-2.42)
Clashscore	102246	1030 (2.48-2.44)
Ramachandran outliers	100387	1024 (2.48-2.44)
Sidechain outliers	100360	1024 (2.48-2.44)
RSRZ outliers	91569	4787 (2.50-2.42)

The table below summarises the geometric issues observed across the polymeric chains and their fit to the electron density. The red, orange, yellow and green segments on the lower bar indicate the fraction of residues that contain outliers for  $\geq 3$ , 2, 1 and 0 types of geometric quality criteria. A grey segment represents the fraction of residues that are not modelled. The numeric value for each fraction is indicated below the corresponding segment, with a dot representing fractions  $\leq 5\%$ . The upper red bar (where present) indicates the fraction of residues that have poor fit to the electron density. The numeric value is given above the bar.

Mol	Chain	Length	Quality of chain
1	A	241	<div> <div>12%</div> <div>83%</div> <div>16%</div> </div>
1	B	241	<div> <div>9%</div> <div>79%</div> <div>20%</div> </div>
1	C	241	<div> <div>10%</div> <div>83%</div> <div>15%</div> </div>
1	D	241	<div> <div>10%</div> <div>85%</div> <div>13%</div> </div>
1	E	241	<div> <div>10%</div> <div>80%</div> <div>18%</div> </div>

The following table lists non-polymeric compounds, carbohydrate monomers and non-standard residues in protein, DNA, RNA chains that are outliers for geometric or electron-density-fit criteria:

Mol	Type	Chain	Res	Chirality	Geometry	Clashes	Electron density
4	EDO	E	303	-	-	-	X

## 2 Entry composition

There are 6 unique types of molecules in this entry. The entry contains 10015 atoms, of which 0 are hydrogens and 0 are deuteriums.

In the tables below, the ZeroOcc column contains the number of atoms modelled with zero occupancy, the AltConf column contains the number of residues with at least one atom in alternate conformation and the Trace column contains the number of residues modelled with at most 2 atoms.

- Molecule 1 is a protein called Chlorite dismutase.

Mol	Chain	Residues	Atoms					ZeroOcc	AltConf	Trace
1	A	238	Total	C	N	O	S	0	0	0
			1915	1220	332	357	6			
1	B	238	Total	C	N	O	S	0	0	0
			1915	1220	332	357	6			
1	C	236	Total	C	N	O	S	0	0	0
			1902	1213	330	353	6			
1	D	236	Total	C	N	O	S	0	0	0
			1902	1213	330	353	6			
1	E	237	Total	C	N	O	S	0	0	0
			1910	1217	331	356	6			

There are 25 discrepancies between the modelled and reference sequences:

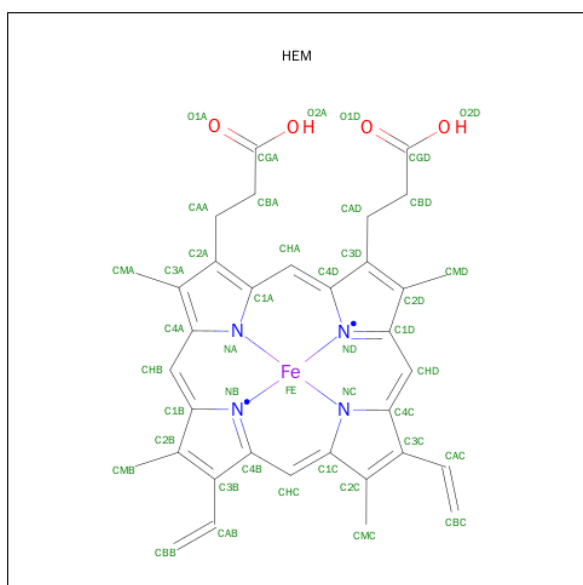
Chain	Residue	Modelled	Actual	Comment	Reference
A	-2	GLY	-	EXPRESSION TAG	UNP B3U4H7
A	-1	ALA	-	EXPRESSION TAG	UNP B3U4H7
A	0	MET	-	EXPRESSION TAG	UNP B3U4H7
A	146	TYR	TRP	ENGINEERED MUTATION	UNP B3U4H7
A	173	GLN	ARG	ENGINEERED MUTATION	UNP B3U4H7
B	-2	GLY	-	EXPRESSION TAG	UNP B3U4H7
B	-1	ALA	-	EXPRESSION TAG	UNP B3U4H7
B	0	MET	-	EXPRESSION TAG	UNP B3U4H7
B	146	TYR	TRP	ENGINEERED MUTATION	UNP B3U4H7
B	173	GLN	ARG	ENGINEERED MUTATION	UNP B3U4H7
C	-2	GLY	-	EXPRESSION TAG	UNP B3U4H7
C	-1	ALA	-	EXPRESSION TAG	UNP B3U4H7
C	0	MET	-	EXPRESSION TAG	UNP B3U4H7
C	146	TYR	TRP	ENGINEERED MUTATION	UNP B3U4H7
C	173	GLN	ARG	ENGINEERED MUTATION	UNP B3U4H7
D	-2	GLY	-	EXPRESSION TAG	UNP B3U4H7
D	-1	ALA	-	EXPRESSION TAG	UNP B3U4H7
D	0	MET	-	EXPRESSION TAG	UNP B3U4H7
D	146	TYR	TRP	ENGINEERED MUTATION	UNP B3U4H7

*Continued on next page...*

Continued from previous page...

Chain	Residue	Modelled	Actual	Comment	Reference
D	173	GLN	ARG	ENGINEERED MUTATION	UNP B3U4H7
E	-2	GLY	-	EXPRESSION TAG	UNP B3U4H7
E	-1	ALA	-	EXPRESSION TAG	UNP B3U4H7
E	0	MET	-	EXPRESSION TAG	UNP B3U4H7
E	146	TYR	TRP	ENGINEERED MUTATION	UNP B3U4H7
E	173	GLN	ARG	ENGINEERED MUTATION	UNP B3U4H7

- Molecule 2 is PROTOPORPHYRIN IX CONTAINING FE (three-letter code: HEM) (formula:  $C_{34}H_{32}FeN_4O_4$ ).





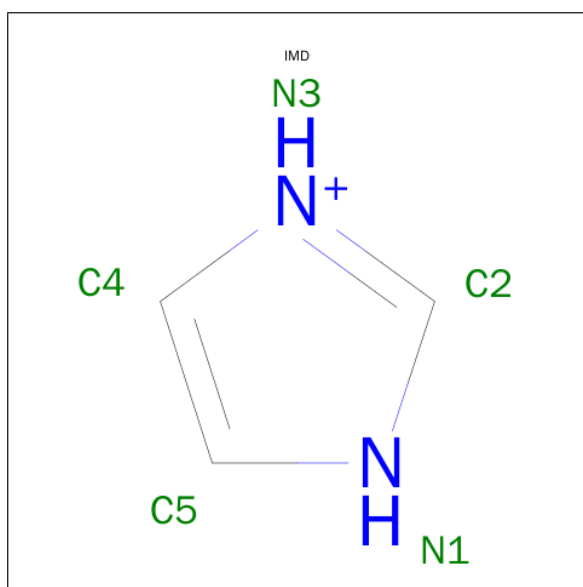
Mol	Chain	Residues	Atoms			ZeroOcc	AltConf
3	A	1	Total	O	S	0	0
			5	4	1		
3	A	1	Total	O	S	0	0
			5	4	1		
3	B	1	Total	O	S	0	0
			5	4	1		
3	B	1	Total	O	S	0	0
			5	4	1		
3	C	1	Total	O	S	0	0
			5	4	1		
3	C	1	Total	O	S	0	0
			5	4	1		
3	D	1	Total	O	S	0	0
			5	4	1		
3	D	1	Total	O	S	0	0
			5	4	1		
3	E	1	Total	O	S	0	0
			5	4	1		

- Molecule 4 is 1,2-ETHANEDIOL (three-letter code: EDO) (formula: C<sub>2</sub>H<sub>6</sub>O<sub>2</sub>).



Mol	Chain	Residues	Atoms			ZeroOcc	AltConf
4	A	1	Total	C	O	0	0
			4	2	2		
4	B	1	Total	C	O	0	0
			4	2	2		
4	C	1	Total	C	O	0	0
			4	2	2		
4	C	1	Total	C	O	0	0
			4	2	2		
4	C	1	Total	C	O	0	0
			4	2	2		
4	D	1	Total	C	O	0	0
			4	2	2		
4	E	1	Total	C	O	0	0
			4	2	2		
4	E	1	Total	C	O	0	0
			4	2	2		
4	E	1	Total	C	O	0	0
			4	2	2		

- Molecule 5 is IMIDAZOLE (three-letter code: IMD) (formula:  $C_3H_5N_2$ ).



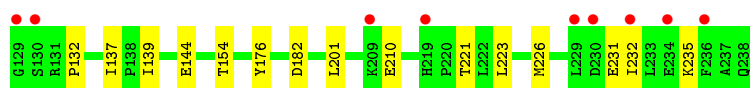
Mol	Chain	Residues	Atoms			ZeroOcc	AltConf
5	A	1	Total	C	N	0	0
			5	3	2		
5	D	1	Total	C	N	0	0
			5	3	2		

- Molecule 6 is water.

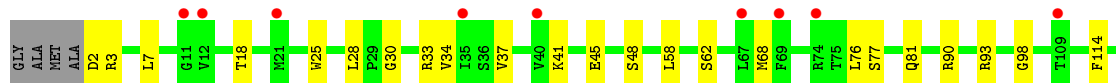
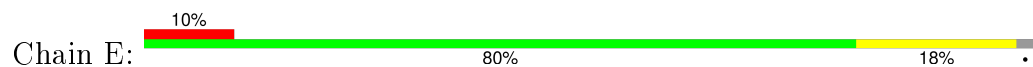
Mol	Chain	Residues	Atoms		ZeroOcc	AltConf
6	A	38	Total	O	0	0
			38	38		
6	B	38	Total	O	0	0
			38	38		
6	C	36	Total	O	0	0
			36	36		
6	D	27	Total	O	0	0
			27	27		
6	E	26	Total	O	0	0
			26	26		







● Molecule 1: Chlorite dismutase



## 4 Data and refinement statistics

Property	Value	Source
Space group	C 1 2 1	Depositor
Cell constants a, b, c, $\alpha$ , $\beta$ , $\gamma$	138.10Å 114.98Å 118.87Å 90.00° 118.08° 90.00°	Depositor
Resolution (Å)	44.38 – 2.45 44.38 – 2.45	Depositor EDS
% Data completeness (in resolution range)	97.7 (44.38-2.45) 98.3 (44.38-2.45)	Depositor EDS
$R_{merge}$	0.23	Depositor
$R_{sym}$	(Not available)	Depositor
$\langle I/\sigma(I) \rangle$ <sup>1</sup>	1.85 (at 2.45Å)	Xtriage
Refinement program	PHENIX (phenix.refine: dev_1388)	Depositor
R, $R_{free}$	0.277 , 0.333 0.265 , 0.321	Depositor DCC
$R_{free}$ test set	2976 reflections (5.03%)	DCC
Wilson B-factor (Å <sup>2</sup> )	34.3	Xtriage
Anisotropy	0.229	Xtriage
Bulk solvent $k_{sol}$ (e/Å <sup>3</sup> ), $B_{sol}$ (Å <sup>2</sup> )	0.30 , 62.1	EDS
Estimated twinning fraction	No twinning to report.	Xtriage
L-test for twinning <sup>2</sup>	$\langle  L  \rangle = 0.46$ , $\langle L^2 \rangle = 0.29$	Xtriage
Outliers	5 of 59228 reflections (0.008%)	Xtriage
$F_o, F_c$ correlation	0.90	EDS
Total number of atoms	10015	wwPDB-VP
Average B, all atoms (Å <sup>2</sup> )	68.0	wwPDB-VP

Xtriage's analysis on translational NCS is as follows: *The largest off-origin peak in the Patterson function is 4.12% of the height of the origin peak. No significant pseudotranslation is detected.*

<sup>1</sup>Intensities estimated from amplitudes.

<sup>2</sup>Theoretical values of  $\langle |L| \rangle$ ,  $\langle L^2 \rangle$  for acentric reflections are 0.5, 0.375 respectively for untwinned datasets, and 0.333, 0.2 for perfectly twinned datasets.

## 5 Model quality [i](#)

### 5.1 Standard geometry [i](#)

Bond lengths and bond angles in the following residue types are not validated in this section: HEM, SO4, EDO, IMD

The Z score for a bond length (or angle) is the number of standard deviations the observed value is removed from the expected value. A bond length (or angle) with  $|Z| > 5$  is considered an outlier worth inspection. RMSZ is the root-mean-square of all Z scores of the bond lengths (or angles).

Mol	Chain	Bond lengths		Bond angles	
		RMSZ	# Z  >5	RMSZ	# Z  >5
1	A	0.23	0/1960	0.45	0/2650
1	B	0.22	0/1960	0.41	0/2650
1	C	0.22	0/1947	0.40	0/2632
1	D	0.21	0/1947	0.37	0/2632
1	E	0.22	0/1955	0.41	0/2643
All	All	0.22	0/9769	0.41	0/13207

There are no bond length outliers.

There are no bond angle outliers.

There are no chirality outliers.

There are no planarity outliers.

### 5.2 Too-close contacts [i](#)

In the following table, the Non-H and H(model) columns list the number of non-hydrogen atoms and hydrogen atoms in the chain respectively. The H(added) column lists the number of hydrogen atoms added and optimized by MolProbity. The Clashes column lists the number of clashes within the asymmetric unit, whereas Symm-Clashes lists symmetry related clashes.

Mol	Chain	Non-H	H(model)	H(added)	Clashes	Symm-Clashes
1	A	1915	0	1887	25	0
1	B	1915	0	1887	34	0
1	C	1902	0	1875	22	0
1	D	1902	0	1875	18	0
1	E	1910	0	1879	29	0
2	A	43	0	30	2	0
2	B	43	0	30	5	0
2	C	43	0	30	4	0

*Continued on next page...*

*Continued from previous page...*

Mol	Chain	Non-H	H(model)	H(added)	Clashes	Symm-Clashes
2	D	43	0	30	4	0
2	E	43	0	30	3	0
3	A	10	0	0	1	0
3	B	10	0	0	1	0
3	C	10	0	0	0	0
3	D	10	0	0	1	0
3	E	5	0	0	1	0
4	A	4	0	6	2	0
4	B	4	0	6	0	0
4	C	12	0	18	0	0
4	D	4	0	6	0	0
4	E	12	0	18	1	0
5	A	5	0	5	0	0
5	D	5	0	5	0	0
6	A	38	0	0	0	0
6	B	38	0	0	2	0
6	C	36	0	0	3	0
6	D	27	0	0	0	0
6	E	26	0	0	0	0
All	All	10015	0	9617	133	0

The all-atom clashscore is defined as the number of clashes found per 1000 atoms (including hydrogen atoms). The all-atom clashscore for this structure is 7.

All (133) close contacts within the same asymmetric unit are listed below, sorted by their clash magnitude.

Atom-1	Atom-2	Interatomic distance (Å)	Clash overlap (Å)
1:A:93:ARG:NH1	4:A:303:EDO:O1	2.14	0.81
1:E:233:LEU:HA	1:E:236:PHE:HD2	1.51	0.76
1:E:28:LEU:O	1:E:33:ARG:NH1	2.21	0.73
1:B:28:LEU:O	1:B:33:ARG:NH1	2.22	0.73
1:B:33:ARG:NH2	1:B:238:GLN:O	2.22	0.72
2:E:301:HEM:HHC	2:E:301:HEM:HBB2	1.72	0.70
2:A:301:HEM:HBB2	2:A:301:HEM:HHC	1.75	0.68
1:E:232:ILE:HG22	1:E:236:PHE:HE2	1.61	0.66
1:A:179:THR:O	1:B:199:HIS:ND1	2.22	0.66
1:E:7:LEU:O	1:E:174:LYS:NZ	2.29	0.66
1:D:139:ILE:HD11	2:D:301:HEM:HAC	1.79	0.65
1:D:201:LEU:HD21	2:D:301:HEM:HAB	1.80	0.62
1:B:139:ILE:HD11	2:B:301:HEM:HAC	1.80	0.61
1:C:58:LEU:HD11	1:C:68:MET:HB2	1.81	0.61

*Continued on next page...*

*Continued from previous page...*

Atom-1	Atom-2	Interatomic distance (Å)	Clash overlap (Å)
1:C:97:SER:OG	6:C:413:HOH:O	2.16	0.61
1:B:58:LEU:HD11	1:B:68:MET:HB2	1.82	0.60
1:A:58:LEU:HD11	1:A:68:MET:HB2	1.84	0.60
1:E:30:GLY:H	4:E:302:EDO:H12	1.66	0.59
1:B:192:THR:HG22	1:B:194:ARG:H	1.66	0.59
1:A:160:HIS:ND1	1:A:210:GLU:OE1	2.36	0.58
1:D:132:PRO:HD2	1:D:226:MET:HB3	1.85	0.58
1:B:136:VAL:HB	1:B:222:LEU:HB2	1.86	0.57
1:E:137:ILE:HG12	1:E:221:THR:HG23	1.85	0.57
2:D:301:HEM:HMC2	2:D:301:HEM:HBC2	1.87	0.56
1:A:80:GLN:NE2	1:B:57:LEU:O	2.38	0.55
1:A:90:ARG:HG3	1:A:93:ARG:HE	1.71	0.55
2:D:301:HEM:HBB2	2:D:301:HEM:HMB1	1.88	0.55
1:C:20:GLN:NE2	6:C:431:HOH:O	2.31	0.55
2:C:301:HEM:HBB2	2:C:301:HEM:HMB2	1.89	0.54
1:B:37:VAL:HG12	1:B:41:LYS:HE3	1.90	0.54
1:B:25:TRP:CE2	1:B:33:ARG:HD2	2.43	0.54
1:D:144:GLU:N	1:D:144:GLU:OE2	2.40	0.54
2:A:301:HEM:HMC1	2:A:301:HEM:HBC2	1.89	0.54
1:E:62:SER:OG	1:E:223:LEU:O	2.25	0.54
1:D:58:LEU:HB3	1:D:62:SER:HB2	1.90	0.53
2:E:301:HEM:HBC2	2:E:301:HEM:HMC1	1.90	0.53
1:B:160:HIS:ND1	1:B:210:GLU:OE1	2.33	0.53
1:C:132:PRO:HD2	1:C:226:MET:HB3	1.90	0.53
1:C:25:TRP:CE2	1:C:33:ARG:HD3	2.43	0.53
1:B:132:PRO:HD2	1:B:226:MET:HB3	1.89	0.53
1:C:160:HIS:ND1	1:C:210:GLU:OE1	2.38	0.53
1:D:117:SER:N	3:D:304:SO4:O4	2.37	0.52
1:B:62:SER:OG	1:B:223:LEU:O	2.26	0.52
1:B:137:ILE:HG12	1:B:221:THR:HG23	1.92	0.52
1:B:89:THR:HG22	1:B:91:LEU:H	1.74	0.52
1:A:62:SER:OG	1:A:223:LEU:O	2.25	0.52
1:E:18:THR:OG1	1:E:98:GLY:O	2.27	0.52
1:C:77:SER:O	1:C:81:GLN:HG2	2.10	0.51
1:C:144:GLU:OE1	1:C:144:GLU:N	2.42	0.51
1:E:233:LEU:HA	1:E:236:PHE:CD2	2.39	0.51
3:A:302:SO4:O1	1:B:20:GLN:NE2	2.44	0.51
1:A:37:VAL:HG12	1:A:41:LYS:HE3	1.92	0.50
1:E:58:LEU:HD11	1:E:68:MET:HB2	1.94	0.50
1:E:232:ILE:HG22	1:E:236:PHE:CE2	2.44	0.50
1:B:170:THR:O	1:B:192:THR:HG23	2.12	0.50

*Continued on next page...*

*Continued from previous page...*

Atom-1	Atom-2	Interatomic distance (Å)	Clash overlap (Å)
1:B:25:TRP:O	1:B:33:ARG:HD3	2.12	0.50
1:E:2:ASP:O	1:E:3:ARG:HB2	2.11	0.49
1:B:18:THR:OG1	1:B:98:GLY:O	2.27	0.49
1:E:37:VAL:HG12	1:E:41:LYS:HE3	1.95	0.49
2:B:301:HEM:HBB2	2:B:301:HEM:HMB2	1.94	0.48
1:C:139:ILE:HD11	2:C:301:HEM:HAC	1.94	0.48
1:D:57:LEU:HD13	1:D:232:ILE:HG23	1.96	0.48
1:D:40:VAL:HG21	1:D:91:LEU:HD23	1.96	0.48
1:E:90:ARG:O	1:E:93:ARG:HG2	2.13	0.48
1:C:221:THR:OG1	1:E:183:ASP:OD1	2.25	0.48
1:A:230:ASP:OD2	1:A:231:GLU:N	2.46	0.48
2:E:301:HEM:HBA1	2:E:301:HEM:HHA	1.96	0.47
1:A:179:THR:HB	1:B:199:HIS:CE1	2.49	0.47
1:B:139:ILE:CD1	2:B:301:HEM:HAC	2.45	0.47
1:E:132:PRO:HD2	1:E:226:MET:HB3	1.97	0.47
1:D:110:TYR:HB3	1:D:154:THR:HG23	1.97	0.47
1:E:219:HIS:NE2	3:E:305:SO4:O4	2.48	0.47
1:E:127:GLU:HB2	1:E:169:LYS:O	2.14	0.46
1:E:30:GLY:O	1:E:34:VAL:HG23	2.16	0.46
1:E:77:SER:O	1:E:81:GLN:HG2	2.15	0.46
2:B:301:HEM:HMC1	2:B:301:HEM:HBC2	1.97	0.46
1:B:37:VAL:HG22	1:B:233:LEU:HB3	1.98	0.46
1:C:109:THR:N	2:C:301:HEM:O1A	2.48	0.46
1:C:89:THR:HG22	1:C:91:LEU:H	1.81	0.46
1:A:127:GLU:HB2	1:A:169:LYS:O	2.16	0.46
1:D:80:GLN:NE2	1:E:225:THR:OG1	2.42	0.45
1:A:144:GLU:OE1	1:A:144:GLU:N	2.47	0.45
1:E:161:THR:O	1:E:165:LEU:HG	2.17	0.45
1:A:221:THR:OG1	1:C:183:ASP:OD1	2.27	0.45
1:E:216:ARG:NH2	1:E:219:HIS:O	2.30	0.44
1:C:176:TYR:HB2	1:C:187:ILE:HB	1.99	0.44
1:D:137:ILE:HG12	1:D:221:THR:HG23	1.99	0.44
1:E:90:ARG:HG3	1:E:93:ARG:HE	1.83	0.44
1:C:178:SER:OG	1:C:182:ASP:OD1	2.35	0.44
1:C:136:VAL:HB	1:C:222:LEU:HB2	1.98	0.44
1:C:149:ASP:OD1	6:C:427:HOH:O	2.20	0.44
1:B:68:MET:O	6:B:427:HOH:O	2.21	0.43
1:D:77:SER:O	1:D:81:GLN:HG2	2.18	0.43
1:C:67:LEU:HD12	1:C:232:ILE:HG21	1.99	0.43
1:A:106:LYS:HD2	1:A:177:HIS:CG	2.53	0.43
1:A:77:SER:O	1:A:81:GLN:HG2	2.17	0.43

*Continued on next page...*

*Continued from previous page...*

Atom-1	Atom-2	Interatomic distance (Å)	Clash overlap (Å)
1:C:198:PHE:O	1:C:202:VAL:HG23	2.19	0.43
1:B:161:THR:O	1:B:165:LEU:HG	2.17	0.43
1:B:198:PHE:O	1:B:202:VAL:HG23	2.17	0.43
1:E:76:LEU:HD23	1:E:76:LEU:HA	1.86	0.43
1:D:51:ILE:HG22	1:D:73:ALA:HB2	2.00	0.43
1:A:40:VAL:HG22	1:A:89:THR:HG21	1.99	0.43
1:B:111:VAL:HA	1:B:114:PHE:CD2	2.53	0.43
1:B:109:THR:N	2:B:301:HEM:O1A	2.44	0.43
1:A:111:VAL:HA	1:A:114:PHE:CD2	2.54	0.43
1:B:107:LYS:HA	1:B:108:PRO:HD3	1.92	0.43
1:C:70:ARG:HG2	1:C:72:HIS:CE1	2.53	0.43
1:A:198:PHE:O	1:A:202:VAL:HG23	2.19	0.43
1:D:231:GLU:O	1:D:235:LYS:HG2	2.19	0.42
1:D:70:ARG:NH1	1:D:176:TYR:OH	2.52	0.42
1:A:37:VAL:HG13	1:A:233:LEU:HB3	2.01	0.42
1:D:67:LEU:HD23	1:D:68:MET:N	2.34	0.42
1:D:62:SER:OG	1:D:223:LEU:O	2.33	0.42
1:A:161:THR:O	1:A:165:LEU:HG	2.19	0.42
1:B:17:ALA:O	1:B:68:MET:HA	2.20	0.42
1:E:114:PHE:O	1:E:119:LYS:HE3	2.19	0.42
1:D:89:THR:HG22	1:D:91:LEU:H	1.85	0.42
1:B:182:ASP:HB2	1:B:183:ASP:H	1.71	0.42
1:E:25:TRP:CE2	1:E:33:ARG:HD2	2.55	0.42
1:A:93:ARG:NH2	4:A:303:EDO:O2	2.40	0.41
1:B:56:TYR:O	6:B:427:HOH:O	2.22	0.41
1:A:76:LEU:HA	1:A:76:LEU:HD23	1.86	0.41
1:C:138:PRO:HB2	1:C:184:VAL:HG11	2.02	0.41
1:E:45:GLU:HA	1:E:48:SER:HB3	2.02	0.41
1:E:136:VAL:HB	1:E:222:LEU:HB2	2.02	0.41
1:A:178:SER:OG	1:A:182:ASP:OD1	2.38	0.41
1:B:178:SER:OG	1:B:182:ASP:OD1	2.37	0.40
1:C:76:LEU:HD23	1:C:76:LEU:HA	1.81	0.40
1:A:44:VAL:HG21	1:A:229:LEU:CD2	2.51	0.40
2:C:301:HEM:HMC1	2:C:301:HEM:HBC2	2.04	0.40
1:B:93:ARG:NH2	3:B:302:SO4:O2	2.54	0.40
1:A:176:TYR:HB2	1:A:187:ILE:HB	2.03	0.40
1:B:53:VAL:HG21	1:B:82:PHE:CZ	2.56	0.40

There are no symmetry-related clashes.



## 5.3 Torsion angles

### 5.3.1 Protein backbone

In the following table, the Percentiles column shows the percent Ramachandran outliers of the chain as a percentile score with respect to all X-ray entries followed by that with respect to entries of similar resolution.

The Analysed column shows the number of residues for which the backbone conformation was analysed, and the total number of residues.

Mol	Chain	Analysed	Favoured	Allowed	Outliers	Percentiles	
1	A	236/241 (98%)	227 (96%)	8 (3%)	1 (0%)	39	49
1	B	236/241 (98%)	228 (97%)	8 (3%)	0	100	100
1	C	234/241 (97%)	227 (97%)	7 (3%)	0	100	100
1	D	234/241 (97%)	221 (94%)	12 (5%)	1 (0%)	39	49
1	E	235/241 (98%)	227 (97%)	7 (3%)	1 (0%)	39	49
All	All	1175/1205 (98%)	1130 (96%)	42 (4%)	3 (0%)	46	57

All (3) Ramachandran outliers are listed below:

Mol	Chain	Res	Type
1	A	237	ALA
1	E	237	ALA
1	D	125	ASN

### 5.3.2 Protein sidechains

In the following table, the Percentiles column shows the percent sidechain outliers of the chain as a percentile score with respect to all X-ray entries followed by that with respect to entries of similar resolution.

The Analysed column shows the number of residues for which the sidechain conformation was analysed, and the total number of residues.

Mol	Chain	Analysed	Rotameric	Outliers	Percentiles	
1	A	205/206 (100%)	205 (100%)	0	100	100
1	B	205/206 (100%)	205 (100%)	0	100	100
1	C	204/206 (99%)	204 (100%)	0	100	100
1	D	204/206 (99%)	202 (99%)	2 (1%)	82	89
1	E	205/206 (100%)	205 (100%)	0	100	100

*Continued on next page...*

*Continued from previous page...*

Mol	Chain	Analysed	Rotameric	Outliers	Percentiles
All	All	1023/1030 (99%)	1021 (100%)	2 (0%)	95 97

All (2) residues with a non-rotameric sidechain are listed below:

Mol	Chain	Res	Type
1	D	182	ASP
1	D	210	GLU

Some sidechains can be flipped to improve hydrogen bonding and reduce clashes. There are no such sidechains identified.

### 5.3.3 RNA ⓘ

There are no RNA molecules in this entry.

## 5.4 Non-standard residues in protein, DNA, RNA chains ⓘ

There are no non-standard protein/DNA/RNA residues in this entry.

## 5.5 Carbohydrates ⓘ

There are no carbohydrates in this entry.

## 5.6 Ligand geometry ⓘ

25 ligands are modelled in this entry.

In the following table, the Counts columns list the number of bonds (or angles) for which Mogul statistics could be retrieved, the number of bonds (or angles) that are observed in the model and the number of bonds (or angles) that are defined in the chemical component dictionary. The Link column lists molecule types, if any, to which the group is linked. The Z score for a bond length (or angle) is the number of standard deviations the observed value is removed from the expected value. A bond length (or angle) with  $|Z| > 2$  is considered an outlier worth inspection. RMSZ is the root-mean-square of all Z scores of the bond lengths (or angles).

Mol	Type	Chain	Res	Link	Bond lengths			Bond angles		
					Counts	RMSZ	# Z  > 2	Counts	RMSZ	# Z  > 2
2	HEM	A	301	1	30,50,50	2.07	11 (36%)	24,82,82	2.31	9 (37%)
3	SO4	A	302	-	4,4,4	0.23	0	6,6,6	0.06	0
4	EDO	A	303	-	3,3,3	0.47	0	2,2,2	0.27	0

Mol	Type	Chain	Res	Link	Bond lengths			Bond angles		
					Counts	RMSZ	# Z  > 2	Counts	RMSZ	# Z  > 2
5	IMD	A	304	-	3,5,5	0.52	0	4,5,5	0.59	0
3	SO4	A	305	-	4,4,4	0.24	0	6,6,6	0.08	0
2	HEM	B	301	1	30,50,50	2.24	9 (30%)	24,82,82	2.32	7 (29%)
3	SO4	B	302	-	4,4,4	0.23	0	6,6,6	0.09	0
3	SO4	B	303	-	4,4,4	0.23	0	6,6,6	0.08	0
4	EDO	B	304	-	3,3,3	0.47	0	2,2,2	0.42	0
2	HEM	C	301	1	30,50,50	2.21	9 (30%)	24,82,82	2.34	6 (25%)
3	SO4	C	302	-	4,4,4	0.24	0	6,6,6	0.09	0
3	SO4	C	303	-	4,4,4	0.24	0	6,6,6	0.08	0
4	EDO	C	304	-	3,3,3	0.46	0	2,2,2	0.42	0
4	EDO	C	305	-	3,3,3	0.46	0	2,2,2	0.42	0
4	EDO	C	306	-	3,3,3	0.47	0	2,2,2	0.42	0
2	HEM	D	301	1,5	30,50,50	2.21	11 (36%)	24,82,82	2.33	7 (29%)
5	IMD	D	302	2	3,5,5	0.50	0	4,5,5	0.60	0
3	SO4	D	303	-	4,4,4	0.23	0	6,6,6	0.09	0
3	SO4	D	304	-	4,4,4	0.24	0	6,6,6	0.07	0
4	EDO	D	305	-	3,3,3	0.48	0	2,2,2	0.40	0
2	HEM	E	301	1	30,50,50	2.10	12 (40%)	24,82,82	2.33	8 (33%)
4	EDO	E	302	-	3,3,3	0.47	0	2,2,2	0.42	0
4	EDO	E	303	-	3,3,3	0.48	0	2,2,2	0.41	0
4	EDO	E	304	-	3,3,3	0.47	0	2,2,2	0.41	0
3	SO4	E	305	-	4,4,4	0.23	0	6,6,6	0.08	0

In the following table, the Chirals column lists the number of chiral outliers, the number of chiral centers analysed, the number of these observed in the model and the number defined in the chemical component dictionary. Similar counts are reported in the Torsion and Rings columns. '-' means no outliers of that kind were identified.

Mol	Type	Chain	Res	Link	Chirals	Torsions	Rings
2	HEM	A	301	1	-	0/10/54/54	0/0/8/8
3	SO4	A	302	-	-	0/0/0/0	0/0/0/0
4	EDO	A	303	-	-	0/1/1/1	0/0/0/0
5	IMD	A	304	-	-	0/0/0/0	0/1/1/1
3	SO4	A	305	-	-	0/0/0/0	0/0/0/0
2	HEM	B	301	1	-	0/10/54/54	0/0/8/8
3	SO4	B	302	-	-	0/0/0/0	0/0/0/0
3	SO4	B	303	-	-	0/0/0/0	0/0/0/0
4	EDO	B	304	-	-	0/1/1/1	0/0/0/0
2	HEM	C	301	1	-	0/10/54/54	0/0/8/8
3	SO4	C	302	-	-	0/0/0/0	0/0/0/0
3	SO4	C	303	-	-	0/0/0/0	0/0/0/0
4	EDO	C	304	-	-	0/1/1/1	0/0/0/0

*Continued on next page...*

*Continued from previous page...*

Mol	Type	Chain	Res	Link	Chirals	Torsions	Rings
4	EDO	C	305	-	-	0/1/1/1	0/0/0/0
4	EDO	C	306	-	-	0/1/1/1	0/0/0/0
2	HEM	D	301	1,5	-	0/10/54/54	0/0/8/8
5	IMD	D	302	2	-	0/0/0/0	0/1/1/1
3	SO4	D	303	-	-	0/0/0/0	0/0/0/0
3	SO4	D	304	-	-	0/0/0/0	0/0/0/0
4	EDO	D	305	-	-	0/1/1/1	0/0/0/0
2	HEM	E	301	1	-	0/10/54/54	0/0/8/8
4	EDO	E	302	-	-	0/1/1/1	0/0/0/0
4	EDO	E	303	-	-	0/1/1/1	0/0/0/0
4	EDO	E	304	-	-	0/1/1/1	0/0/0/0
3	SO4	E	305	-	-	0/0/0/0	0/0/0/0

All (52) bond length outliers are listed below:

Mol	Chain	Res	Type	Atoms	Z	Observed(Å)	Ideal(Å)
2	B	301	HEM	C3B-C4B	-7.29	1.45	1.51
2	D	301	HEM	C3B-C4B	-7.05	1.45	1.51
2	C	301	HEM	C3B-C4B	-7.02	1.45	1.51
2	A	301	HEM	C3B-C4B	-6.11	1.46	1.51
2	E	301	HEM	C3B-C4B	-6.10	1.46	1.51
2	C	301	HEM	C3D-C4D	-5.19	1.44	1.51
2	B	301	HEM	C3D-C4D	-5.18	1.44	1.51
2	E	301	HEM	C3D-C4D	-5.08	1.45	1.51
2	D	301	HEM	C3D-C4D	-5.01	1.45	1.51
2	A	301	HEM	C3D-C4D	-4.77	1.45	1.51
2	C	301	HEM	C2C-C1C	-3.80	1.45	1.52
2	B	301	HEM	C2C-C1C	-3.77	1.45	1.52
2	D	301	HEM	C2C-C1C	-3.64	1.45	1.52
2	A	301	HEM	C2C-C1C	-3.59	1.45	1.52
2	E	301	HEM	C2C-C1C	-3.57	1.45	1.52
2	E	301	HEM	C2B-C1B	-2.08	1.45	1.51
2	A	301	HEM	C2D-C1D	-2.05	1.45	1.51
2	A	301	HEM	C2B-C1B	-2.04	1.45	1.51
2	E	301	HEM	C2D-C1D	-2.03	1.45	1.51
2	B	301	HEM	C2D-C1D	-2.02	1.45	1.51
2	D	301	HEM	C2D-C1D	-2.01	1.45	1.51
2	D	301	HEM	C2B-C1B	-2.00	1.45	1.51
2	B	301	HEM	C4C-NC	2.05	1.38	1.36
2	D	301	HEM	C4C-NC	2.06	1.38	1.36
2	A	301	HEM	C1C-NC	2.06	1.38	1.36
2	E	301	HEM	FE-NB	2.07	2.08	1.97

*Continued on next page...*

*Continued from previous page...*

Mol	Chain	Res	Type	Atoms	Z	Observed(Å)	Ideal(Å)
2	A	301	HEM	FE-NB	2.08	2.08	1.97
2	A	301	HEM	C3B-CAB	2.08	1.55	1.51
2	D	301	HEM	C1C-NC	2.08	1.38	1.36
2	C	301	HEM	C1C-NC	2.09	1.38	1.36
2	D	301	HEM	FE-NB	2.10	2.08	1.97
2	C	301	HEM	C4C-NC	2.10	1.38	1.36
2	E	301	HEM	C3B-CAB	2.12	1.55	1.51
2	E	301	HEM	C4C-NC	2.12	1.38	1.36
2	E	301	HEM	C1C-NC	2.13	1.38	1.36
2	E	301	HEM	FE-ND	2.17	2.09	1.97
2	B	301	HEM	FE-NB	2.22	2.09	1.97
2	C	301	HEM	C3C-CAC	2.25	1.55	1.51
2	B	301	HEM	C3C-CAC	2.29	1.55	1.51
2	D	301	HEM	C3B-CAB	2.34	1.55	1.51
2	A	301	HEM	FE-ND	2.35	2.09	1.97
2	E	301	HEM	C3C-CAC	2.36	1.55	1.51
2	B	301	HEM	C3B-CAB	2.36	1.55	1.51
2	C	301	HEM	FE-ND	2.36	2.10	1.97
2	D	301	HEM	C3C-CAC	2.36	1.55	1.51
2	C	301	HEM	C3B-CAB	2.38	1.55	1.51
2	A	301	HEM	C3C-CAC	2.42	1.55	1.51
2	C	301	HEM	FE-NC	2.55	2.05	1.95
2	E	301	HEM	FE-NC	2.59	2.06	1.95
2	A	301	HEM	FE-NC	2.61	2.06	1.95
2	B	301	HEM	FE-NC	3.00	2.07	1.95
2	D	301	HEM	FE-NC	3.06	2.07	1.95

All (37) bond angle outliers are listed below:

Mol	Chain	Res	Type	Atoms	Z	Observed(°)	Ideal(°)
2	A	301	HEM	CAA-CBA-CGA	-2.41	108.34	112.75
2	D	301	HEM	CAA-CBA-CGA	-2.21	108.70	112.75
2	A	301	HEM	C3B-C4B-NB	-2.15	107.52	111.63
2	E	301	HEM	C3B-C4B-NB	-2.09	107.63	111.63
2	B	301	HEM	CBD-CAD-C3D	-2.03	107.64	113.55
2	C	301	HEM	C2D-C3D-C4D	2.24	105.30	101.50
2	A	301	HEM	C2D-C3D-C4D	2.24	105.30	101.50
2	D	301	HEM	C2D-C3D-C4D	2.29	105.38	101.50
2	E	301	HEM	C2D-C3D-C4D	2.35	105.49	101.50
2	B	301	HEM	C2D-C3D-C4D	2.58	105.87	101.50
2	A	301	HEM	CMD-C2D-C3D	2.71	126.32	114.35
2	B	301	HEM	CMD-C2D-C3D	2.88	127.10	114.35

*Continued on next page...*

*Continued from previous page...*

Mol	Chain	Res	Type	Atoms	Z	Observed(°)	Ideal(°)
2	E	301	HEM	CMD-C2D-C3D	2.89	127.13	114.35
2	D	301	HEM	CMD-C2D-C3D	2.97	127.47	114.35
2	C	301	HEM	CMD-C2D-C3D	2.99	127.59	114.35
2	A	301	HEM	C3B-C4B-CHC	3.45	128.02	123.16
2	E	301	HEM	C3B-C4B-CHC	3.52	128.12	123.16
2	A	301	HEM	CMB-C2B-C3B	3.68	125.72	116.53
2	C	301	HEM	CAD-C3D-C4D	3.74	125.65	112.47
2	E	301	HEM	CMB-C2B-C3B	3.79	126.00	116.53
2	D	301	HEM	CAD-C3D-C4D	3.92	126.31	112.47
2	B	301	HEM	CAD-C3D-C4D	4.06	126.80	112.47
2	E	301	HEM	CAD-C3D-C4D	4.12	126.99	112.47
2	A	301	HEM	CAD-C3D-C2D	4.18	125.24	113.22
2	E	301	HEM	CMC-C2C-C3C	4.73	128.34	116.53
2	A	301	HEM	CMC-C2C-C3C	4.80	128.51	116.53
2	A	301	HEM	CAD-C3D-C4D	4.82	129.46	112.47
2	B	301	HEM	CMB-C2B-C3B	4.86	128.66	116.53
2	D	301	HEM	CMC-C2C-C3C	4.87	128.69	116.53
2	C	301	HEM	CMB-C2B-C3B	4.88	128.71	116.53
2	B	301	HEM	CAD-C3D-C2D	4.91	127.33	113.22
2	C	301	HEM	CMC-C2C-C3C	4.94	128.85	116.53
2	B	301	HEM	CMC-C2C-C3C	4.95	128.90	116.53
2	E	301	HEM	CAD-C3D-C2D	4.97	127.51	113.22
2	D	301	HEM	CMB-C2B-C3B	5.00	129.02	116.53
2	D	301	HEM	CAD-C3D-C2D	5.25	128.31	113.22
2	C	301	HEM	CAD-C3D-C2D	5.51	129.05	113.22

There are no chirality outliers.

There are no torsion outliers.

There are no ring outliers.

11 monomers are involved in 25 short contacts:

Mol	Chain	Res	Type	Clashes	Symm-Clashes
2	A	301	HEM	2	0
3	A	302	SO4	1	0
4	A	303	EDO	2	0
2	B	301	HEM	5	0
3	B	302	SO4	1	0
2	C	301	HEM	4	0
2	D	301	HEM	4	0
3	D	304	SO4	1	0
2	E	301	HEM	3	0

*Continued on next page...*

*Continued from previous page...*

Mol	Chain	Res	Type	Clashes	Symm-Clashes
4	E	302	EDO	1	0
3	E	305	SO4	1	0

## 5.7 Other polymers [i](#)

There are no such residues in this entry.

## 5.8 Polymer linkage issues [i](#)

There are no chain breaks in this entry.

## 6 Fit of model and data ⓘ

### 6.1 Protein, DNA and RNA chains ⓘ

In the following table, the column labelled ‘#RSRZ> 2’ contains the number (and percentage) of RSRZ outliers, followed by percent RSRZ outliers for the chain as percentile scores relative to all X-ray entries and entries of similar resolution. The OWAB column contains the minimum, median, 95<sup>th</sup> percentile and maximum values of the occupancy-weighted average B-factor per residue. The column labelled ‘Q< 0.9’ lists the number of (and percentage) of residues with an average occupancy less than 0.9.

Mol	Chain	Analysed	<RSRZ>	#RSRZ>2	OWAB(Å <sup>2</sup> )	Q<0.9
1	A	238/241 (98%)	0.80	28 (11%) 6 5	31, 63, 114, 150	0
1	B	238/241 (98%)	0.78	21 (8%) 12 13	30, 62, 113, 146	1 (0%)
1	C	236/241 (97%)	0.74	23 (9%) 10 10	32, 65, 114, 136	1 (0%)
1	D	236/241 (97%)	0.71	25 (10%) 8 8	36, 66, 110, 131	1 (0%)
1	E	237/241 (98%)	0.73	24 (10%) 9 9	29, 65, 112, 149	1 (0%)
All	All	1185/1205 (98%)	0.75	121 (10%) 9 9	29, 64, 113, 150	4 (0%)

All (121) RSRZ outliers are listed below:

Mol	Chain	Res	Type	RSRZ
1	E	236	PHE	6.8
1	B	3	ARG	6.7
1	A	125	ASN	6.2
1	D	232	ILE	5.4
1	A	123	GLN	5.4
1	D	236	PHE	4.8
1	D	229	LEU	4.7
1	A	236	PHE	4.7
1	B	21	MET	4.4
1	D	69	PHE	4.3
1	C	26	TRP	4.3
1	E	69	PHE	4.3
1	B	237	ALA	4.1
1	E	237	ALA	3.9
1	C	35	ILE	3.8
1	A	124	VAL	3.8
1	B	120	THR	3.7
1	C	125	ASN	3.7
1	B	74	ARG	3.7
1	B	211	PHE	3.6

*Continued on next page...*



*Continued from previous page...*

Mol	Chain	Res	Type	RSRZ
1	E	124	VAL	3.5
1	C	229	LEU	3.4
1	C	8	THR	3.4
1	B	236	PHE	3.3
1	B	125	ASN	3.3
1	A	127	GLU	3.3
1	A	207	GLN	3.2
1	A	3	ARG	3.2
1	D	6	LEU	3.2
1	C	108	PRO	3.2
1	A	35	ILE	3.1
1	D	88	GLY	3.1
1	A	4	GLU	3.1
1	A	122	LEU	3.0
1	E	207	GLN	2.9
1	A	6	LEU	2.9
1	B	7	LEU	2.8
1	E	12	VAL	2.8
1	C	69	PHE	2.8
1	B	48	SER	2.7
1	B	238	GLN	2.7
1	D	209	LYS	2.7
1	E	167	TYR	2.7
1	C	146	TYR	2.6
1	E	233	LEU	2.6
1	A	232	ILE	2.6
1	D	98	GLY	2.6
1	D	125	ASN	2.6
1	A	128	SER	2.6
1	D	26	TRP	2.6
1	D	124	VAL	2.5
1	A	90	ARG	2.5
1	B	126	GLY	2.5
1	C	99	GLY	2.5
1	D	35	ILE	2.5
1	D	44	VAL	2.4
1	D	219	HIS	2.4
1	A	31	GLU	2.4
1	C	131	ARG	2.4
1	D	129	GLY	2.4
1	D	107	LYS	2.4
1	A	209	LYS	2.4

*Continued on next page...*

*Continued from previous page...*

Mol	Chain	Res	Type	RSRZ
1	B	117	SER	2.4
1	D	234	GLU	2.4
1	A	67	LEU	2.4
1	D	230	ASP	2.4
1	B	127	GLU	2.4
1	A	69	PHE	2.4
1	E	234	GLU	2.4
1	A	5	LYS	2.4
1	B	121	GLU	2.4
1	C	113	GLY	2.3
1	C	111	VAL	2.3
1	C	194	ARG	2.3
1	E	194	ARG	2.3
1	E	125	ASN	2.3
1	E	35	ILE	2.3
1	E	127	GLU	2.3
1	E	109	THR	2.3
1	A	126	GLY	2.3
1	A	28	LEU	2.3
1	E	74	ARG	2.3
1	C	67	LEU	2.2
1	C	189	TYR	2.2
1	D	28	LEU	2.2
1	B	35	ILE	2.2
1	E	21	MET	2.2
1	C	217	PHE	2.2
1	A	120	THR	2.2
1	B	146	TYR	2.2
1	A	97	SER	2.2
1	E	67	LEU	2.2
1	A	110	TYR	2.2
1	A	91	LEU	2.2
1	B	213	HIS	2.2
1	C	21	MET	2.2
1	C	195	LEU	2.2
1	D	48	SER	2.1
1	E	164	ALA	2.1
1	B	216	ARG	2.1
1	D	3	ARG	2.1
1	C	11	GLY	2.1
1	E	11	GLY	2.1
1	C	230	ASP	2.1

*Continued on next page...*

*Continued from previous page...*

Mol	Chain	Res	Type	RSRZ
1	A	165	LEU	2.1
1	A	55	SER	2.1
1	B	31	GLU	2.1
1	D	47	TRP	2.1
1	D	83	LEU	2.1
1	E	128	SER	2.1
1	C	28	LEU	2.1
1	C	175	LEU	2.1
1	C	105	SER	2.1
1	A	2	ASP	2.1
1	E	232	ILE	2.0
1	B	8	THR	2.0
1	E	40	VAL	2.0
1	D	29	PRO	2.0
1	E	146	TYR	2.0
1	E	186	PHE	2.0
1	D	130	SER	2.0

## 6.2 Non-standard residues in protein, DNA, RNA chains [i](#)

There are no non-standard protein/DNA/RNA residues in this entry.

## 6.3 Carbohydrates [i](#)

There are no carbohydrates in this entry.

## 6.4 Ligands [i](#)

In the following table, the Atoms column lists the number of modelled atoms in the group and the number defined in the chemical component dictionary. LLDF column lists the quality of electron density of the group with respect to its neighbouring residues in protein, DNA or RNA chains. The B-factors column lists the minimum, median, 95<sup>th</sup> percentile and maximum values of B factors of atoms in the group. The column labelled 'Q< 0.9' lists the number of atoms with occupancy less than 0.9.

Mol	Type	Chain	Res	Atoms	RSCC	RSR	LLDF	B-factors(Å <sup>2</sup> )	Q<0.9
4	EDO	E	303	4/4	0.69	0.34	2.53	54,72,77,79	0
4	EDO	B	304	4/4	0.89	0.36	1.69	43,44,50,51	0
5	IMD	D	302	5/5	0.94	0.20	1.28	67,69,77,79	0
3	SO4	A	302	5/5	0.91	0.25	1.03	18,28,51,61	5

*Continued on next page...*

*Continued from previous page...*

Mol	Type	Chain	Res	Atoms	RSCC	RSR	LLDF	B-factors( $\text{\AA}^2$ )	Q<0.9
4	EDO	C	304	4/4	0.87	0.26	0.94	66,74,79,79	0
3	SO4	B	303	5/5	0.85	0.22	0.03	133,134,138,146	0
2	HEM	D	301	43/43	0.93	0.17	-0.35	29,57,71,73	0
2	HEM	C	301	43/43	0.94	0.17	-0.54	13,38,56,70	0
2	HEM	E	301	43/43	0.96	0.17	-0.65	10,33,60,77	0
2	HEM	B	301	43/43	0.95	0.17	-0.69	6,35,59,66	0
3	SO4	D	303	5/5	0.88	0.13	-0.91	110,119,126,130	0
2	HEM	A	301	43/43	0.95	0.15	-0.97	11,31,61,72	0
3	SO4	C	302	5/5	0.91	0.13	-1.90	84,97,112,117	0
3	SO4	E	305	5/5	0.83	0.21	-	96,104,110,115	0
3	SO4	B	302	5/5	0.93	0.19	-	95,108,114,117	0
3	SO4	A	305	5/5	0.82	0.41	-	148,152,156,156	0
4	EDO	A	303	4/4	0.82	0.21	-	64,74,81,91	0
3	SO4	C	303	5/5	0.72	0.33	-	113,114,118,121	0
4	EDO	D	305	4/4	0.91	0.10	-	46,49,60,68	0
4	EDO	C	306	4/4	0.80	0.17	-	56,65,75,88	0
5	IMD	A	304	5/5	0.85	0.32	-	35,51,60,62	0
4	EDO	E	304	4/4	0.95	0.11	-	59,61,64,67	0
4	EDO	E	302	4/4	0.86	0.12	-	72,75,83,86	0
3	SO4	D	304	5/5	0.65	0.29	-	115,120,133,138	0
4	EDO	C	305	4/4	0.84	0.16	-	69,75,79,80	0

## 6.5 Other polymers

There are no such residues in this entry.