



# wwPDB X-ray Structure Validation Summary Report ⓘ

Feb 1, 2016 – 06:35 PM GMT

PDB ID : 4M11  
Title : Crystal Structure of Murine Cyclooxygenase-2 Complex with Meloxicam  
Authors : Xu, S.; Banerjee, S.; Hermanson, D.J.; Marnett, L.J.  
Deposited on : 2013-08-02  
Resolution : 2.45 Å(reported)

This is a wwPDB X-ray Structure Validation Summary Report for a publicly released PDB entry.  
We welcome your comments at [validation@mail.wwpdb.org](mailto:validation@mail.wwpdb.org)  
A user guide is available at  
<http://wwpdb.org/validation/2016/XrayValidationReportHelp>  
with specific help available everywhere you see the ⓘ symbol.

---

The following versions of software and data (see [references ⓘ](#)) were used in the production of this report:

MolProbity : 4.02b-467  
Mogul : 1.7 (RC4), CSD as536be (2015)  
Xtriage (Phenix) : 1.9-1692  
EDS : rb-20026688  
Percentile statistics : 20151230.v01 (using entries in the PDB archive December 30th 2015)  
Refmac : 5.8.0135  
CCP4 : 6.5.0  
Ideal geometry (proteins) : Engh & Huber (2001)  
Ideal geometry (DNA, RNA) : Parkinson et al. (1996)  
Validation Pipeline (wwPDB-VP) : trunk26865

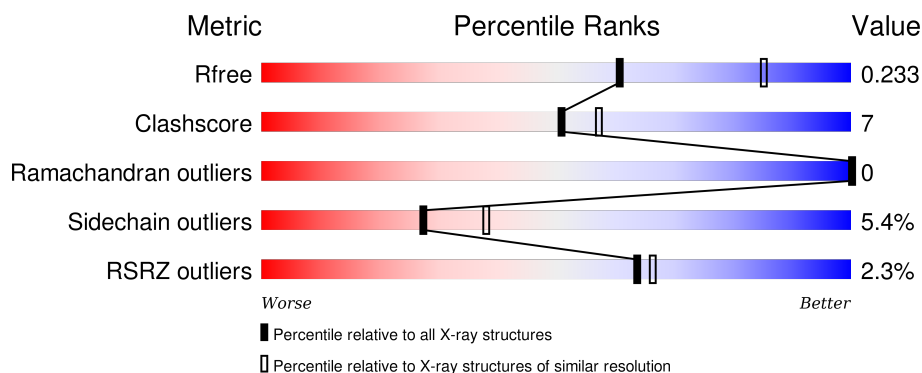
# 1 Overall quality at a glance ⓘ

The following experimental techniques were used to determine the structure:

## *X-RAY DIFFRACTION*

The reported resolution of this entry is 2.45 Å.

Percentile scores (ranging between 0-100) for global validation metrics of the entry are shown in the following graphic. The table shows the number of entries on which the scores are based.



Metric	Whole archive (#Entries)	Similar resolution (#Entries, resolution range(Å))
$R_{free}$	91344	4776 (2.50-2.42)
Clashscore	102246	1030 (2.48-2.44)
Ramachandran outliers	100387	1024 (2.48-2.44)
Sidechain outliers	100360	1024 (2.48-2.44)
RSRZ outliers	91569	4787 (2.50-2.42)

The table below summarises the geometric issues observed across the polymeric chains and their fit to the electron density. The red, orange, yellow and green segments on the lower bar indicate the fraction of residues that contain outliers for  $\geq 3$ , 2, 1 and 0 types of geometric quality criteria. A grey segment represents the fraction of residues that are not modelled. The numeric value for each fraction is indicated below the corresponding segment, with a dot representing fractions  $\leq 5\%$ . The upper red bar (where present) indicates the fraction of residues that have poor fit to the electron density. The numeric value is given above the bar.

Mol	Chain	Length	Quality of chain
1	A	552	<div> <div>81%</div> <div>17%</div> <div>•</div> </div>
1	B	552	<div> <div>4%</div> <div>82%</div> <div>16%</div> <div>•</div> </div>
1	C	552	<div> <div>2%</div> <div>84%</div> <div>14%</div> <div>•</div> </div>
1	D	552	<div> <div>2%</div> <div>86%</div> <div>12%</div> <div>•</div> </div>

## 2 Entry composition [i](#)

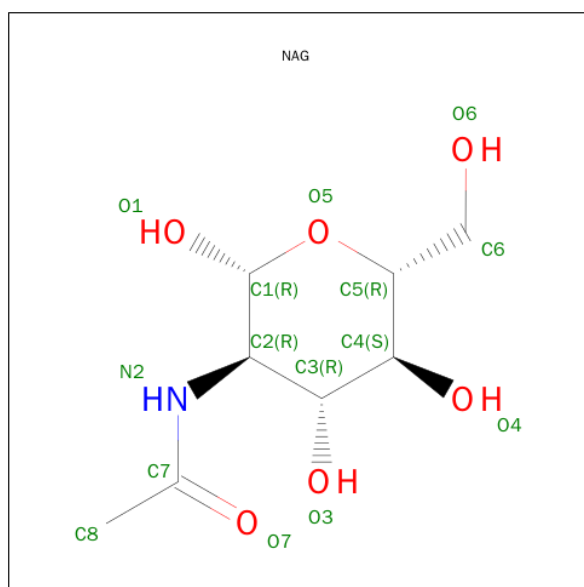
There are 7 unique types of molecules in this entry. The entry contains 19520 atoms, of which 0 are hydrogens and 0 are deuteriums.

In the tables below, the ZeroOcc column contains the number of atoms modelled with zero occupancy, the AltConf column contains the number of residues with at least one atom in alternate conformation and the Trace column contains the number of residues modelled with at most 2 atoms.

- Molecule 1 is a protein called Prostaglandin G/H synthase 2.

Mol	Chain	Residues	Atoms					ZeroOcc	AltConf	Trace
1	A	552	Total	C	N	O	S	0	0	0
			4474	2885	750	814	25			
1	B	552	Total	C	N	O	S	0	0	0
			4474	2885	750	814	25			
1	C	552	Total	C	N	O	S	0	0	0
			4474	2885	750	814	25			
1	D	552	Total	C	N	O	S	0	0	0
			4474	2885	750	814	25			

- Molecule 2 is SUGAR (N-ACETYL-D-GLUCOSAMINE) (three-letter code: NAG) (formula:  $C_8H_{15}NO_6$ ).



Mol	Chain	Residues	Atoms				ZeroOcc	AltConf
2	A	1	Total	C	N	O	0	0
			14	8	1	5		
2	A	1	Total	C	N	O	0	0
			14	8	1	5		

*Continued on next page...*

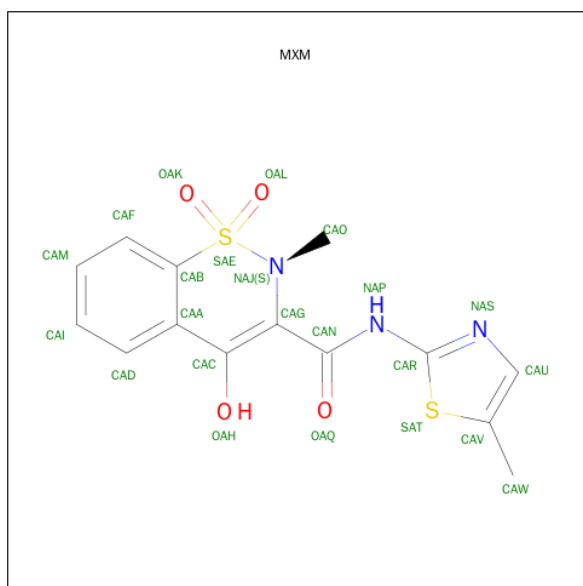
Mol	Chain	Residues	Atoms				ZeroOcc	AltConf
2	B	1	Total 14	C 8	N 1	O 5	0	0
2	B	1	Total 14	C 8	N 1	O 5	0	0
2	C	1	Total 14	C 8	N 1	O 5	0	0
2	C	1	Total 14	C 8	N 1	O 5	0	0
2	D	1	Total 14	C 8	N 1	O 5	0	0
2	D	1	Total 14	C 8	N 1	O 5	0	0

- | Mol | Chain | Residues | Atoms       |         |        |         | ZeroOcc | AltConf |
|-----|-------|----------|-------------|---------|--------|---------|---------|---------|
| 3   | A     | 2        | Total<br>28 | C<br>16 | N<br>2 | O<br>10 | 0       | 0       |
| 3   | B     | 2        | Total<br>28 | C<br>16 | N<br>2 | O<br>10 | 0       | 0       |
| 3   | C     | 2        | Total<br>28 | C<br>16 | N<br>2 | O<br>10 | 0       | 0       |
| 3   | D     | 2        | Total<br>28 | C<br>16 | N<br>2 | O<br>10 | 0       | 0       |

- 
- Chemical structure of HEM (Heme) showing a central iron atom coordinated by four nitrogen atoms in a porphyrin-like ring, with various side chains and a central heme group.

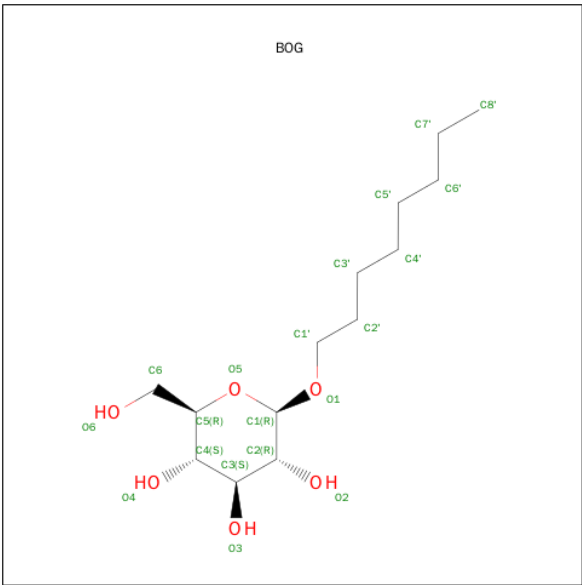
Mol	Chain	Residues	Atoms				ZeroOcc	AltConf
4	A	1	Total	C	Fe	N	O	
			43	34	1	4	4	
4	B	1	Total	C	Fe	N	O	
			43	34	1	4	4	
4	C	1	Total	C	Fe	N	O	
			43	34	1	4	4	
4	D	1	Total	C	Fe	N	O	
			43	34	1	4	4	

- Molecule 5 is 4-HYDROXY-2-METHYL-N-(5-METHYL-1,3-THIAZOL-2-YL)-2H-1,2-BENZOTHAZINE-3-CARBOXAMIDE 1,1-DIOXIDE (three-letter code: MXM) (formula:  $C_{14}H_{13}N_3O_4S_2$ ).



Mol	Chain	Residues	Atoms				ZeroOcc	AltConf
5	A	1	Total	C	N	O	S	
			46	28	6	8	4	
5	B	1	Total	C	N	O	S	
			46	28	6	8	4	
5	C	1	Total	C	N	O	S	
			46	28	6	8	4	
5	D	1	Total	C	N	O	S	
			46	28	6	8	4	

- Molecule 6 is SUGAR (B-OCTYLGLUCOSIDE) (three-letter code: BOG) (formula:  $C_{14}H_{28}O_6$ ).



Mol	Chain	Residues	Atoms			ZeroOcc	AltConf
6	B	1	Total	C	O	0	0
			20	14	6		
6	C	1	Total	C	O	0	0
			20	14	6		

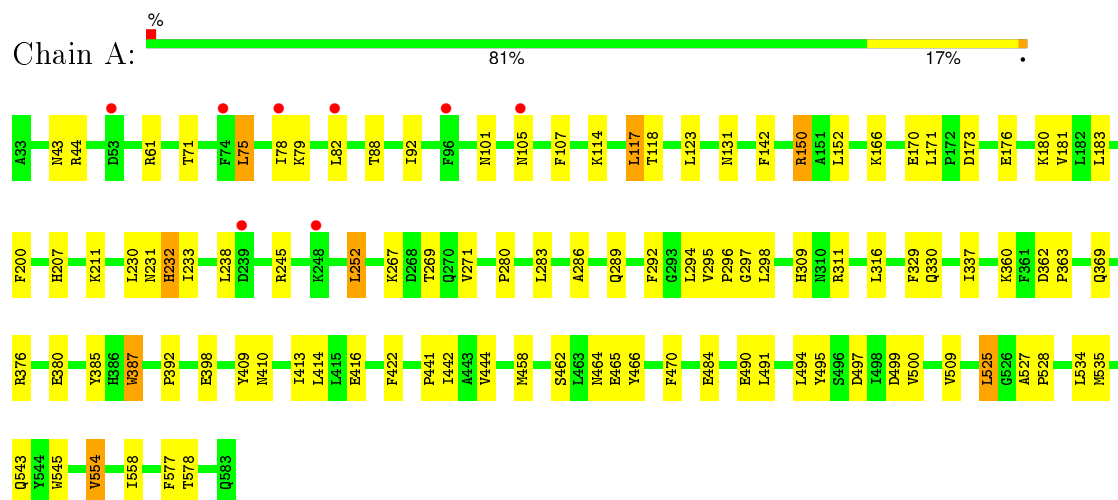
- Molecule 7 is water.

Mol	Chain	Residues	Atoms		ZeroOcc	AltConf
7	A	232	Total	O	0	0
			232	232		
7	B	216	Total	O	0	0
			216	216		
7	C	261	Total	O	0	0
			261	261		
7	D	295	Total	O	0	0
			295	295		

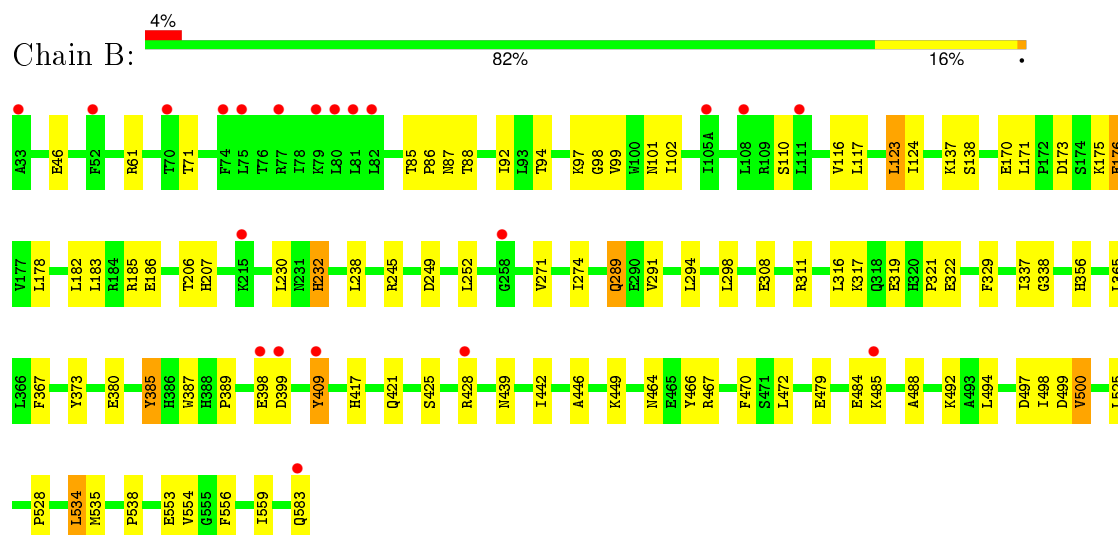
### 3 Residue-property plots

These plots are drawn for all protein, RNA and DNA chains in the entry. The first graphic for a chain summarises the proportions of errors displayed in the second graphic. The second graphic shows the sequence view annotated by issues in geometry and electron density. Residues are color-coded according to the number of geometric quality criteria for which they contain at least one outlier: green = 0, yellow = 1, orange = 2 and red = 3 or more. A red dot above a residue indicates a poor fit to the electron density ( $\text{RSRZ} > 2$ ). Stretches of 2 or more consecutive residues without any outlier are shown as a green connector. Residues present in the sample, but not in the model, are shown in grey.

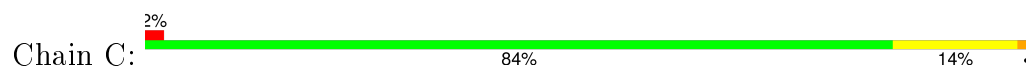
#### • Molecule 1: Prostaglandin G/H synthase 2

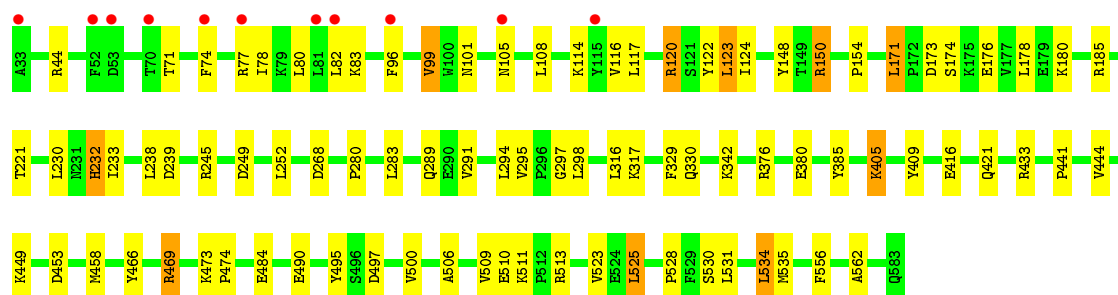


#### • Molecule 1: Prostaglandin G/H synthase 2

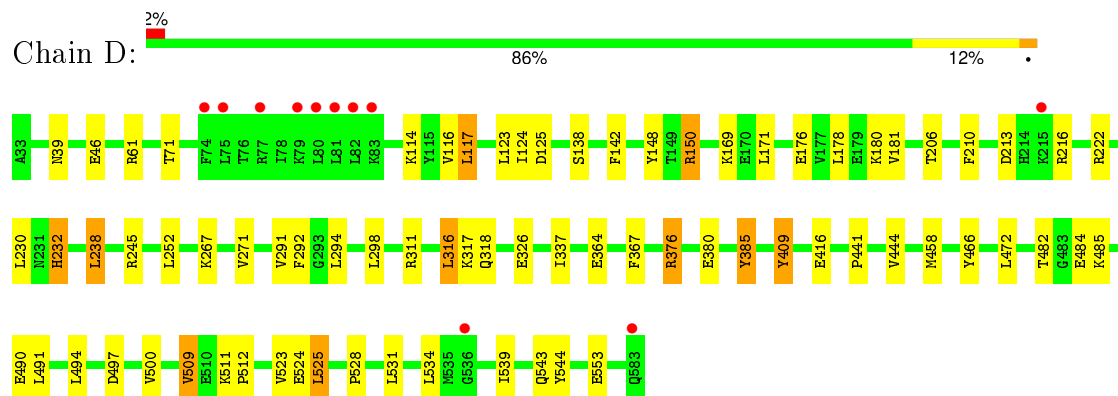


#### • Molecule 1: Prostaglandin G/H synthase 2





• Molecule 1: Prostaglandin G/H synthase 2





## 4 Data and refinement statistics

Property	Value	Source
Space group	P 2 21 21	Depositor
Cell constants a, b, c, $\alpha$ , $\beta$ , $\gamma$	121.63Å 133.54Å 180.23Å 90.00° 90.00° 90.00°	Depositor
Resolution (Å)	49.95 – 2.45 49.95 – 2.45	Depositor EDS
% Data completeness (in resolution range)	98.4 (49.95-2.45) 91.0 (49.95-2.45)	Depositor EDS
$R_{merge}$	(Not available)	Depositor
$R_{sym}$	0.13	Depositor
$\langle I/\sigma(I) \rangle$ <sup>1</sup>	4.84 (at 2.45Å)	Xtriage
Refinement program	PHENIX (phenix.refine: 1.8.2_1309)	Depositor
R, $R_{free}$	0.202 , 0.231 0.204 , 0.233	Depositor DCC
$R_{free}$ test set	5333 reflections (5.69%)	DCC
Wilson B-factor (Å <sup>2</sup> )	33.6	Xtriage
Anisotropy	0.563	Xtriage
Bulk solvent $k_{sol}$ (e/Å <sup>3</sup> ), $B_{sol}$ (Å <sup>2</sup> )	0.34 , 41.3	EDS
Estimated twinning fraction	No twinning to report.	Xtriage
L-test for twinning <sup>2</sup>	$\langle  L  \rangle = 0.48$ , $\langle L^2 \rangle = 0.31$	Xtriage
Outliers	8 of 106829 reflections (0.007%)	Xtriage
$F_o, F_c$ correlation	0.94	EDS
Total number of atoms	19520	wwPDB-VP
Average B, all atoms (Å <sup>2</sup> )	34.0	wwPDB-VP

Xtriage's analysis on translational NCS is as follows: *The analyses of the Patterson function reveals a significant off-origin peak that is 47.87 % of the origin peak, indicating pseudo translational symmetry. The chance of finding a peak of this or larger height randomly in a structure without pseudo translational symmetry is equal to 9.3299e-05. The detected translational NCS is most likely also responsible for the elevated intensity ratio.*

<sup>1</sup> Intensities estimated from amplitudes.

<sup>2</sup> Theoretical values of  $\langle |L| \rangle$ ,  $\langle L^2 \rangle$  for acentric reflections are 0.5, 0.375 respectively for untwinned datasets, and 0.333, 0.2 for perfectly twinned datasets.

## 5 Model quality [i](#)

### 5.1 Standard geometry [i](#)

Bond lengths and bond angles in the following residue types are not validated in this section: HEM, MXM, NAG, BOG

The Z score for a bond length (or angle) is the number of standard deviations the observed value is removed from the expected value. A bond length (or angle) with  $|Z| > 5$  is considered an outlier worth inspection. RMSZ is the root-mean-square of all Z scores of the bond lengths (or angles).

Mol	Chain	Bond lengths		Bond angles	
		RMSZ	$\# Z  > 5$	RMSZ	$\# Z  > 5$
1	A	0.42	2/4601 (0.0%)	0.51	0/6239
1	B	0.37	0/4601	0.48	0/6239
1	C	0.34	0/4601	0.49	0/6239
1	D	0.35	0/4601	0.48	0/6239
All	All	0.37	2/18404 (0.0%)	0.49	0/24956

All (2) bond length outliers are listed below:

Mol	Chain	Res	Type	Atoms	Z	Observed(Å)	Ideal(Å)
1	A	392	PRO	N-CD	5.40	1.55	1.47
1	A	387	TRP	NE1-CE2	-5.38	1.30	1.37

There are no bond angle outliers.

There are no chirality outliers.

There are no planarity outliers.

### 5.2 Too-close contacts [i](#)

In the following table, the Non-H and H(model) columns list the number of non-hydrogen atoms and hydrogen atoms in the chain respectively. The H(added) column lists the number of hydrogen atoms added and optimized by MolProbity. The Clashes column lists the number of clashes within the asymmetric unit, whereas Symm-Clashes lists symmetry related clashes.

Mol	Chain	Non-H	H(model)	H(added)	Clashes	Symm-Clashes
1	A	4474	0	4372	65	0
1	B	4474	0	4373	69	0
1	C	4474	0	4373	57	0
1	D	4474	0	4373	42	0
2	A	28	0	26	1	0

*Continued on next page...*

*Continued from previous page...*

Mol	Chain	Non-H	H(model)	H(added)	Clashes	Symm-Clashes
2	B	28	0	26	0	0
2	C	28	0	26	0	0
2	D	28	0	26	1	0
3	A	28	0	25	0	0
3	B	28	0	25	0	0
3	C	28	0	25	0	0
3	D	28	0	25	1	0
4	A	43	0	30	2	0
4	B	43	0	30	2	0
4	C	43	0	30	2	0
4	D	43	0	30	2	0
5	A	46	0	26	3	0
5	B	46	0	25	7	0
5	C	46	0	26	9	0
5	D	46	0	26	5	0
6	B	20	0	25	1	0
6	C	20	0	25	2	0
7	A	232	0	0	9	0
7	B	216	0	0	9	0
7	C	261	0	0	9	0
7	D	295	0	0	11	0
All	All	19520	0	17968	251	0

The all-atom clashscore is defined as the number of clashes found per 1000 atoms (including hydrogen atoms). The all-atom clashscore for this structure is 7.

The worst 5 of 251 close contacts within the same asymmetric unit are listed below, sorted by their clash magnitude.

Atom-1	Atom-2	Interatomic distance (Å)	Clash overlap (Å)
1:B:97:LYS:HD3	1:B:356:HIS:CG	2.07	0.88
1:B:97:LYS:HD3	1:B:356:HIS:CD2	2.08	0.88
1:D:294:LEU:HD23	1:D:409:TYR:HE1	1.39	0.86
1:D:294:LEU:HD23	1:D:409:TYR:CE1	2.12	0.84
1:C:74:PHE:HD1	1:C:77:ARG:NH2	1.78	0.81

There are no symmetry-related clashes.

## 5.3 Torsion angles [i](#)

### 5.3.1 Protein backbone [i](#)

In the following table, the Percentiles column shows the percent Ramachandran outliers of the chain as a percentile score with respect to all X-ray entries followed by that with respect to entries of similar resolution.

The Analysed column shows the number of residues for which the backbone conformation was analysed, and the total number of residues.

Mol	Chain	Analysed	Favoured	Allowed	Outliers	Percentiles	
1	A	550/552 (100%)	531 (96%)	19 (4%)	0	100	100
1	B	550/552 (100%)	529 (96%)	21 (4%)	0	100	100
1	C	550/552 (100%)	534 (97%)	16 (3%)	0	100	100
1	D	550/552 (100%)	535 (97%)	15 (3%)	0	100	100
All	All	2200/2208 (100%)	2129 (97%)	71 (3%)	0	100	100

There are no Ramachandran outliers to report.

### 5.3.2 Protein sidechains [i](#)

In the following table, the Percentiles column shows the percent sidechain outliers of the chain as a percentile score with respect to all X-ray entries followed by that with respect to entries of similar resolution.

The Analysed column shows the number of residues for which the sidechain conformation was analysed, and the total number of residues.

Mol	Chain	Analysed	Rotameric	Outliers	Percentiles	
1	A	493/493 (100%)	468 (95%)	25 (5%)	29	41
1	B	493/493 (100%)	467 (95%)	26 (5%)	28	39
1	C	493/493 (100%)	464 (94%)	29 (6%)	24	34
1	D	493/493 (100%)	467 (95%)	26 (5%)	28	39
All	All	1972/1972 (100%)	1866 (95%)	106 (5%)	27	38

5 of 106 residues with a non-rotameric sidechain are listed below:

Mol	Chain	Res	Type
1	B	500	VAL
1	C	178	LEU
1	D	376	ARG

*Continued on next page...*

*Continued from previous page...*

Mol	Chain	Res	Type
1	B	535	MET
1	C	114	LYS

Some sidechains can be flipped to improve hydrogen bonding and reduce clashes. All (5) such sidechains are listed below:

Mol	Chain	Res	Type
1	A	207	HIS
1	A	270	GLN
1	A	369	GLN
1	B	386	HIS
1	B	421	GLN

### 5.3.3 RNA ⓘ

There are no RNA molecules in this entry.

## 5.4 Non-standard residues in protein, DNA, RNA chains ⓘ

There are no non-standard protein/DNA/RNA residues in this entry.

## 5.5 Carbohydrates ⓘ

8 carbohydrates are modelled in this entry.

In the following table, the Counts columns list the number of bonds (or angles) for which Mogul statistics could be retrieved, the number of bonds (or angles) that are observed in the model and the number of bonds (or angles) that are defined in the chemical component dictionary. The Link column lists molecule types, if any, to which the group is linked. The Z score for a bond length (or angle) is the number of standard deviations the observed value is removed from the expected value. A bond length (or angle) with  $|Z| > 2$  is considered an outlier worth inspection. RMSZ is the root-mean-square of all Z scores of the bond lengths (or angles).

Mol	Type	Chain	Res	Link	Bond lengths			Bond angles		
					Counts	RMSZ	$\# Z  > 2$	Counts	RMSZ	$\# Z  > 2$
3	NAG	A	602	1,3	14,14,15	0.59	0	15,19,21	0.25	0
3	NAG	A	603	3	14,14,15	0.33	0	15,19,21	0.47	0
3	NAG	B	602	1,3	14,14,15	0.51	0	15,19,21	0.32	0
3	NAG	B	603	3	14,14,15	0.49	0	15,19,21	0.76	0
3	NAG	C	602	1,3	14,14,15	0.41	0	15,19,21	0.40	0
3	NAG	C	603	3	14,14,15	0.21	0	15,19,21	0.48	0

Mol	Type	Chain	Res	Link	Bond lengths			Bond angles		
					Counts	RMSZ	# Z  > 2	Counts	RMSZ	# Z  > 2
3	NAG	D	602	1,3	14,14,15	0.54	0	15,19,21	0.30	0
3	NAG	D	603	3	14,14,15	0.27	0	15,19,21	0.43	0

In the following table, the Chirals column lists the number of chiral outliers, the number of chiral centers analysed, the number of these observed in the model and the number defined in the chemical component dictionary. Similar counts are reported in the Torsion and Rings columns. '-' means no outliers of that kind were identified.

Mol	Type	Chain	Res	Link	Chirals	Torsions	Rings
3	NAG	A	602	1,3	-	0/6/23/26	0/1/1/1
3	NAG	A	603	3	-	0/6/23/26	0/1/1/1
3	NAG	B	602	1,3	-	0/6/23/26	0/1/1/1
3	NAG	B	603	3	-	0/6/23/26	0/1/1/1
3	NAG	C	602	1,3	-	0/6/23/26	0/1/1/1
3	NAG	C	603	3	-	0/6/23/26	0/1/1/1
3	NAG	D	602	1,3	-	0/6/23/26	0/1/1/1
3	NAG	D	603	3	-	0/6/23/26	0/1/1/1

There are no bond length outliers.

There are no bond angle outliers.

There are no chirality outliers.

There are no torsion outliers.

There are no ring outliers.

1 monomer is involved in 1 short contact:

Mol	Chain	Res	Type	Clashes	Symm-Clashes
3	D	603	NAG	1	0

## 5.6 Ligand geometry

22 ligands are modelled in this entry.

In the following table, the Counts columns list the number of bonds (or angles) for which Mogul statistics could be retrieved, the number of bonds (or angles) that are observed in the model and the number of bonds (or angles) that are defined in the chemical component dictionary. The Link column lists molecule types, if any, to which the group is linked. The Z score for a bond length (or angle) is the number of standard deviations the observed value is removed from the expected value. A bond length (or angle) with  $|Z| > 2$  is considered an outlier worth inspection. RMSZ is the root-mean-square of all Z scores of the bond lengths (or angles).

Mol	Type	Chain	Res	Link	Bond lengths			Bond angles		
					Counts	RMSZ	# Z  > 2	Counts	RMSZ	# Z  > 2
2	NAG	A	601	1	14,14,15	1.02	1 (7%)	15,19,21	0.60	0
2	NAG	A	604	1	14,14,15	0.74	1 (7%)	15,19,21	0.42	0
4	HEM	A	605	1,7	30,50,50	2.30	9 (30%)	24,82,82	2.32	8 (33%)
5	MXM	A	606[A]	-	23,25,25	6.19	11 (47%)	31,38,38	4.89	18 (58%)
5	MXM	A	606[B]	-	23,25,25	7.25	10 (43%)	31,38,38	5.24	16 (51%)
2	NAG	B	601	1	14,14,15	0.68	0	15,19,21	0.32	0
2	NAG	B	604	1	14,14,15	0.44	0	15,19,21	0.40	0
4	HEM	B	605	1,7	30,50,50	2.28	10 (33%)	24,82,82	2.30	8 (33%)
5	MXM	B	606[A]	-	23,25,25	5.99	10 (43%)	31,38,38	4.83	18 (58%)
5	MXM	B	606[B]	-	23,25,25	5.75	10 (43%)	31,38,38	4.89	15 (48%)
6	BOG	B	607	-	20,20,20	1.41	2 (10%)	25,25,25	1.65	3 (12%)
2	NAG	C	601	1	14,14,15	0.48	0	15,19,21	0.30	0
2	NAG	C	604	1	14,14,15	0.86	1 (7%)	15,19,21	0.53	0
4	HEM	C	605	1	30,50,50	2.24	9 (30%)	24,82,82	2.35	8 (33%)
5	MXM	C	606[A]	-	23,25,25	7.42	12 (52%)	31,38,38	5.45	20 (64%)
5	MXM	C	606[B]	-	23,25,25	8.10	11 (47%)	31,38,38	5.09	19 (61%)
6	BOG	C	607	-	20,20,20	1.59	3 (15%)	25,25,25	1.49	5 (20%)
2	NAG	D	601	1	14,14,15	0.89	1 (7%)	15,19,21	0.75	0
2	NAG	D	604	1	14,14,15	0.28	0	15,19,21	0.53	0
4	HEM	D	605	1,7	30,50,50	2.28	9 (30%)	24,82,82	2.32	9 (37%)
5	MXM	D	606[A]	-	23,25,25	7.83	12 (52%)	31,38,38	4.99	18 (58%)
5	MXM	D	606[B]	-	23,25,25	7.94	11 (47%)	31,38,38	5.32	18 (58%)

In the following table, the Chirals column lists the number of chiral outliers, the number of chiral centers analysed, the number of these observed in the model and the number defined in the chemical component dictionary. Similar counts are reported in the Torsion and Rings columns. '-' means no outliers of that kind were identified.

Mol	Type	Chain	Res	Link	Chirals	Torsions	Rings
2	NAG	A	601	1	-	0/6/23/26	0/1/1/1
2	NAG	A	604	1	-	0/6/23/26	0/1/1/1
4	HEM	A	605	1,7	-	0/10/54/54	0/0/8/8
5	MXM	A	606[A]	-	-	0/6/32/32	0/3/3/3
5	MXM	A	606[B]	-	-	0/6/32/32	0/3/3/3
2	NAG	B	601	1	-	0/6/23/26	0/1/1/1
2	NAG	B	604	1	-	0/6/23/26	0/1/1/1
4	HEM	B	605	1,7	-	0/10/54/54	0/0/8/8
5	MXM	B	606[A]	-	-	0/6/32/32	0/3/3/3

*Continued on next page...*

*Continued from previous page...*

Mol	Type	Chain	Res	Link	Chirals	Torsions	Rings
5	MXM	B	606[B]	-	-	0/6/32/32	0/3/3/3
6	BOG	B	607	-	-	0/11/31/31	0/1/1/1
2	NAG	C	601	1	-	0/6/23/26	0/1/1/1
2	NAG	C	604	1	-	0/6/23/26	0/1/1/1
4	HEM	C	605	1	-	0/10/54/54	0/0/8/8
5	MXM	C	606[A]	-	-	0/6/32/32	0/3/3/3
5	MXM	C	606[B]	-	-	0/6/32/32	0/3/3/3
6	BOG	C	607	-	-	0/11/31/31	0/1/1/1
2	NAG	D	601	1	-	0/6/23/26	0/1/1/1
2	NAG	D	604	1	-	0/6/23/26	0/1/1/1
4	HEM	D	605	1,7	-	0/10/54/54	0/0/8/8
5	MXM	D	606[A]	-	-	0/6/32/32	0/3/3/3
5	MXM	D	606[B]	-	-	0/6/32/32	0/3/3/3

The worst 5 of 133 bond length outliers are listed below:

Mol	Chain	Res	Type	Atoms	Z	Observed(Å)	Ideal(Å)
5	C	606[B]	MXM	SAE-NAJ	-30.56	1.33	1.64
5	D	606[A]	MXM	SAE-NAJ	-28.35	1.35	1.64
5	D	606[B]	MXM	SAE-NAJ	-27.59	1.36	1.64
5	C	606[A]	MXM	SAE-NAJ	-27.22	1.36	1.64
5	A	606[B]	MXM	SAE-NAJ	-23.04	1.40	1.64

The worst 5 of 183 bond angle outliers are listed below:

Mol	Chain	Res	Type	Atoms	Z	Observed(°)	Ideal(°)
5	C	606[A]	MXM	OAL-SAE-OAK	-11.89	102.37	118.63
5	D	606[B]	MXM	OAL-SAE-OAK	-11.78	102.51	118.63
5	D	606[A]	MXM	OAL-SAE-OAK	-11.41	103.02	118.63
5	C	606[B]	MXM	OAL-SAE-OAK	-11.38	103.06	118.63
5	A	606[B]	MXM	CAB-CAA-CAC	-10.60	114.69	120.53

There are no chirality outliers.

There are no torsion outliers.

There are no ring outliers.

16 monomers are involved in 37 short contacts:

Mol	Chain	Res	Type	Clashes	Symm-Clashes
2	A	604	NAG	1	0
4	A	605	HEM	2	0
5	A	606[A]	MXM	2	0

*Continued on next page...*



*Continued from previous page...*

Mol	Chain	Res	Type	Clashes	Symm-Clashes
5	A	606[B]	MXM	1	0
4	B	605	HEM	2	0
5	B	606[A]	MXM	4	0
5	B	606[B]	MXM	3	0
6	B	607	BOG	1	0
4	C	605	HEM	2	0
5	C	606[A]	MXM	4	0
5	C	606[B]	MXM	5	0
6	C	607	BOG	2	0
2	D	601	NAG	1	0
4	D	605	HEM	2	0
5	D	606[A]	MXM	1	0
5	D	606[B]	MXM	4	0

## 5.7 Other polymers [i](#)

There are no such residues in this entry.

## 5.8 Polymer linkage issues [i](#)

There are no chain breaks in this entry.

## 6 Fit of model and data [i](#)

### 6.1 Protein, DNA and RNA chains [i](#)

In the following table, the column labelled ‘#RSRZ> 2’ contains the number (and percentage) of RSRZ outliers, followed by percent RSRZ outliers for the chain as percentile scores relative to all X-ray entries and entries of similar resolution. The OWAB column contains the minimum, median, 95<sup>th</sup> percentile and maximum values of the occupancy-weighted average B-factor per residue. The column labelled ‘Q< 0.9’ lists the number of (and percentage) of residues with an average occupancy less than 0.9.

Mol	Chain	Analysed	<RSRZ>	#RSRZ>2	OWAB(Å <sup>2</sup> )	Q<0.9
1	A	552/552 (100%)	-0.04	8 (1%) 78 80	16, 33, 57, 75	0
1	B	552/552 (100%)	-0.04	21 (3%) 44 48	18, 37, 65, 96	0
1	C	552/552 (100%)	-0.13	11 (1%) 68 71	16, 28, 53, 69	0
1	D	552/552 (100%)	-0.19	11 (1%) 68 71	17, 29, 51, 83	0
All	All	2208/2208 (100%)	-0.10	51 (2%) 64 66	16, 31, 58, 96	0

The worst 5 of 51 RSRZ outliers are listed below:

Mol	Chain	Res	Type	RSRZ
1	B	82	LEU	7.8
1	D	82	LEU	6.5
1	B	74	PHE	5.7
1	A	82	LEU	5.4
1	D	81	LEU	5.3

### 6.2 Non-standard residues in protein, DNA, RNA chains [i](#)

There are no non-standard protein/DNA/RNA residues in this entry.

### 6.3 Carbohydrates [i](#)

In the following table, the Atoms column lists the number of modelled atoms in the group and the number defined in the chemical component dictionary. LLDF column lists the quality of electron density of the group with respect to its neighbouring residues in protein, DNA or RNA chains. The B-factors column lists the minimum, median, 95<sup>th</sup> percentile and maximum values of B factors of atoms in the group. The column labelled ‘Q< 0.9’ lists the number of atoms with occupancy less than 0.9.

Mol	Type	Chain	Res	Atoms	RSCC	RSR	LLDF	B-factors( $\text{\AA}^2$ )	Q<0.9
3	NAG	B	602	14/15	0.94	0.11	-0.86	25,29,34,38	0
3	NAG	C	602	14/15	0.95	0.12	-1.02	21,28,32,35	0
3	NAG	A	602	14/15	0.94	0.12	-1.23	24,30,32,37	0
3	NAG	D	602	14/15	0.96	0.11	-1.26	25,27,30,35	0
3	NAG	D	603	14/15	0.86	0.23	-	40,43,45,45	0
3	NAG	A	603	14/15	0.92	0.14	-	40,42,45,46	0
3	NAG	C	603	14/15	0.94	0.14	-	39,43,45,46	0
3	NAG	B	603	14/15	0.88	0.22	-	42,46,49,51	0

## 6.4 Ligands

In the following table, the Atoms column lists the number of modelled atoms in the group and the number defined in the chemical component dictionary. LLDF column lists the quality of electron density of the group with respect to its neighbouring residues in protein, DNA or RNA chains. The B-factors column lists the minimum, median, 95<sup>th</sup> percentile and maximum values of B factors of atoms in the group. The column labelled 'Q< 0.9' lists the number of atoms with occupancy less than 0.9.

Mol	Type	Chain	Res	Atoms	RSCC	RSR	LLDF	B-factors( $\text{\AA}^2$ )	Q<0.9
6	BOG	B	607	20/20	0.88	0.23	1.97	37,43,45,46	0
2	NAG	C	601	14/15	0.83	0.26	1.81	43,47,49,50	0
2	NAG	C	604	14/15	0.88	0.18	1.41	35,40,43,43	0
2	NAG	A	601	14/15	0.78	0.20	1.34	38,53,56,56	0
6	BOG	C	607	20/20	0.90	0.15	0.95	36,40,42,42	0
5	MXM	B	606[B]	23/23	0.94	0.16	0.40	29,31,32,33	23
5	MXM	B	606[A]	23/23	0.94	0.16	0.33	29,31,32,33	23
4	HEM	D	605	43/43	0.95	0.14	0.26	20,25,44,52	0
2	NAG	D	604	14/15	0.91	0.22	0.25	42,46,48,49	0
5	MXM	D	606[A]	23/23	0.93	0.14	0.22	20,25,26,26	23
2	NAG	B	604	14/15	0.87	0.23	0.18	37,42,43,45	0
5	MXM	D	606[B]	23/23	0.93	0.14	0.08	20,24,26,26	23
2	NAG	A	604	14/15	0.94	0.16	0.00	34,40,42,43	0
5	MXM	A	606[B]	23/23	0.93	0.16	-0.07	27,32,33,34	23
4	HEM	A	605	43/43	0.96	0.14	-0.14	23,26,42,46	0
5	MXM	A	606[A]	23/23	0.93	0.16	-0.14	27,32,33,34	23
4	HEM	B	605	43/43	0.96	0.13	-0.41	26,30,44,51	0
4	HEM	C	605	43/43	0.96	0.14	-0.43	17,22,36,44	0
5	MXM	C	606[B]	23/23	0.95	0.15	-0.47	22,27,28,29	23
5	MXM	C	606[A]	23/23	0.95	0.15	-0.52	23,27,28,29	23
2	NAG	B	601	14/15	0.82	0.25	-	41,48,50,50	0
2	NAG	D	601	14/15	0.83	0.23	-	38,44,45,47	0

## 6.5 Other polymers [i](#)

There are no such residues in this entry.