



Full wwPDB X-ray Structure Validation Report ⓘ

Feb 1, 2016 – 06:35 PM GMT

PDB ID : 4M1S
Title : Crystal Structure of small molecule vinylsulfonamide 13 covalently bound to K-Ras G12C
Authors : Ostrem, J.M.; Peters, U.; Sos, M.L.; Wells, J.A.; Shokat, K.M.
Deposited on : 2013-08-04
Resolution : 1.55 Å(reported)

This is a Full wwPDB X-ray Structure Validation Report for a publicly released PDB entry.
We welcome your comments at validation@mail.wwpdb.org
A user guide is available at
<http://wwpdb.org/validation/2016/XrayValidationReportHelp>
with specific help available everywhere you see the ⓘ symbol.

The following versions of software and data (see [references ⓘ](#)) were used in the production of this report:

MolProbity : 4.02b-467
Mogul : 1.7 (RC4), CSD as536be (2015)
Xtriage (Phenix) : 1.9-1692
EDS : rb-20026688
Percentile statistics : 20151230.v01 (using entries in the PDB archive December 30th 2015)
Refmac : 5.8.0135
CCP4 : 6.5.0
Ideal geometry (proteins) : Engh & Huber (2001)
Ideal geometry (DNA, RNA) : Parkinson et al. (1996)
Validation Pipeline (wwPDB-VP) : trunk26865

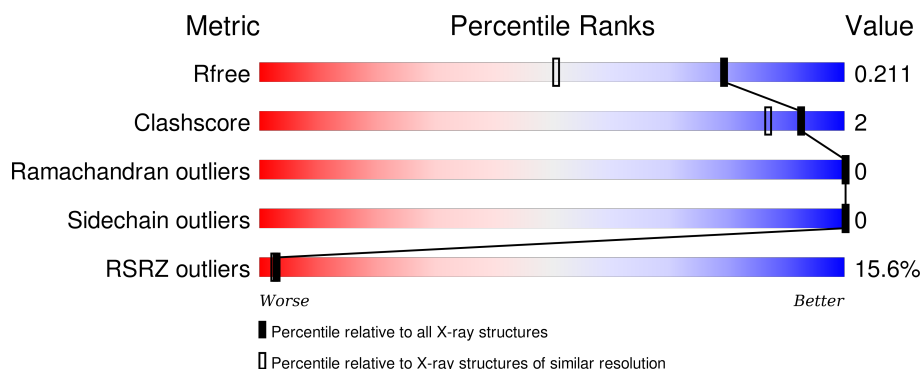
1 Overall quality at a glance

The following experimental techniques were used to determine the structure:

X-RAY DIFFRACTION

The reported resolution of this entry is 1.55 Å.

Percentile scores (ranging between 0-100) for global validation metrics of the entry are shown in the following graphic. The table shows the number of entries on which the scores are based.



Metric	Whole archive (#Entries)	Similar resolution (#Entries, resolution range(Å))
R_{free}	91344	1665 (1.58-1.54)
Clashscore	102246	1014 (1.56-1.56)
Ramachandran outliers	100387	1704 (1.58-1.54)
Sidechain outliers	100360	1702 (1.58-1.54)
RSRZ outliers	91569	1668 (1.58-1.54)

The table below summarises the geometric issues observed across the polymeric chains and their fit to the electron density. The red, orange, yellow and green segments on the lower bar indicate the fraction of residues that contain outliers for ≥ 3 , 2, 1 and 0 types of geometric quality criteria. A grey segment represents the fraction of residues that are not modelled. The numeric value for each fraction is indicated below the corresponding segment, with a dot representing fractions $\leq 5\%$. The upper red bar (where present) indicates the fraction of residues that have poor fit to the electron density. The numeric value is given above the bar.

Mol	Chain	Length	Quality of chain
1	A	170	<div> <div>12%</div> <div>91%</div> <div>5%</div> </div>
1	B	170	<div> <div>12%</div> <div>89%</div> <div>6%</div> </div>
1	C	170	<div> <div>19%</div> <div>83%</div> <div>13%</div> </div>

2 Entry composition

There are 4 unique types of molecules in this entry. The entry contains 7594 atoms, of which 3650 are hydrogens and 0 are deuteriums.

In the tables below, the ZeroOcc column contains the number of atoms modelled with zero occupancy, the AltConf column contains the number of residues with at least one atom in alternate conformation and the Trace column contains the number of residues modelled with at most 2 atoms.

- Molecule 1 is a protein called K-Ras GTPase.

Mol	Chain	Residues	Atoms						ZeroOcc	AltConf	Trace
1	A	161	Total	C	H	N	O	S	0	0	0
			2478	782	1230	219	242	5			
1	B	159	Total	C	H	N	O	S	0	2	0
			2492	784	1242	220	241	5			
1	C	148	Total	C	H	N	O	S	0	2	0
			2259	719	1122	198	215	5			

There are 33 discrepancies between the modelled and reference sequences:

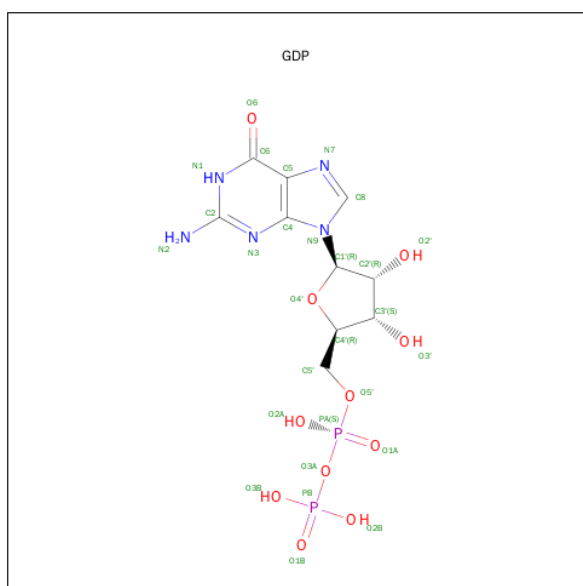
Chain	Residue	Modelled	Actual	Comment	Reference
A	0	GLY	-	EXPRESSION TAG	UNP P01116
A	12	CYS	GLY	VARIANT	UNP P01116
A	51	SER	CYS	ENGINEERED MUTATION	UNP P01116
A	80	LEU	CYS	ENGINEERED MUTATION	UNP P01116
A	118	SER	CYS	ENGINEERED MUTATION	UNP P01116
A	151	GLY	ARG	SEE REMARK 999	UNP P01116
A	153	ASP	GLU	SEE REMARK 999	UNP P01116
A	165	LYS	GLN	SEE REMARK 999	UNP P01116
A	166	HIS	TYR	SEE REMARK 999	UNP P01116
A	167	LYS	ARG	SEE REMARK 999	UNP P01116
A	168	GLU	LEU	SEE REMARK 999	UNP P01116
B	0	GLY	-	EXPRESSION TAG	UNP P01116
B	12	CYS	GLY	VARIANT	UNP P01116
B	51	SER	CYS	ENGINEERED MUTATION	UNP P01116
B	80	LEU	CYS	ENGINEERED MUTATION	UNP P01116
B	118	SER	CYS	ENGINEERED MUTATION	UNP P01116
B	151	GLY	ARG	SEE REMARK 999	UNP P01116
B	153	ASP	GLU	SEE REMARK 999	UNP P01116
B	165	LYS	GLN	SEE REMARK 999	UNP P01116
B	166	HIS	TYR	SEE REMARK 999	UNP P01116
B	167	LYS	ARG	SEE REMARK 999	UNP P01116
B	168	GLU	LEU	SEE REMARK 999	UNP P01116
C	0	GLY	-	EXPRESSION TAG	UNP P01116

Continued on next page...

Continued from previous page...

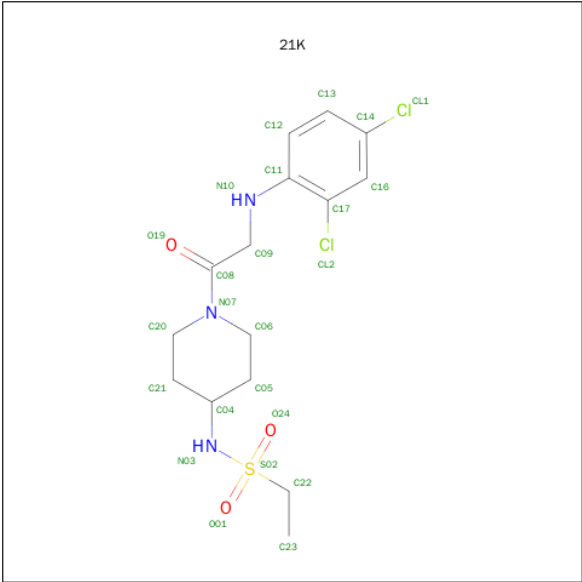
Chain	Residue	Modelled	Actual	Comment	Reference
C	12	CYS	GLY	VARIANT	UNP P01116
C	51	SER	CYS	ENGINEERED MUTATION	UNP P01116
C	80	LEU	CYS	ENGINEERED MUTATION	UNP P01116
C	118	SER	CYS	ENGINEERED MUTATION	UNP P01116
C	151	GLY	ARG	SEE REMARK 999	UNP P01116
C	153	ASP	GLU	SEE REMARK 999	UNP P01116
C	165	LYS	GLN	SEE REMARK 999	UNP P01116
C	166	HIS	TYR	SEE REMARK 999	UNP P01116
C	167	LYS	ARG	SEE REMARK 999	UNP P01116
C	168	GLU	LEU	SEE REMARK 999	UNP P01116

- Molecule 2 is GUANOSINE-5'-DIPHOSPHATE (three-letter code: GDP) (formula: $C_{10}H_{15}N_5O_{11}P_2$).



Mol	Chain	Residues	Atoms						ZeroOcc	AltConf
2	A	1	Total	C	H	N	O	P	0	0
			40	10	12	5	11	2		
2	B	1	Total	C	H	N	O	P	0	0
			40	10	12	5	11	2		
2	C	1	Total	C	H	N	O	P	0	0
			40	10	12	5	11	2		

- Molecule 3 is N-{1-[N-(2,4-DICHLOROPHENYL)GLYCYL]PIPERIDIN-4-YL}ETHANES ULFONAMIDE (three-letter code: 21K) (formula: $C_{15}H_{21}Cl_2N_3O_3S$).



Mol	Chain	Residues	Atoms							ZeroOcc	AltConf
3	B	1	Total	C	Cl	H	N	O	S	0	0
			44	15	2	20	3	3	1		

- Molecule 4 is water.

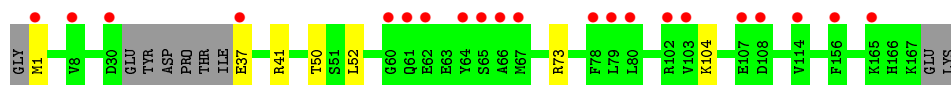
Mol	Chain	Residues	Atoms		ZeroOcc	AltConf
4	A	79	Total	O	0	0
			79	79		
4	B	84	Total	O	0	0
			84	84		
4	C	38	Total	O	0	0
			38	38		

3 Residue-property plots [i](#)


These plots are drawn for all protein, RNA and DNA chains in the entry. The first graphic for a chain summarises the proportions of errors displayed in the second graphic. The second graphic shows the sequence view annotated by issues in geometry and electron density. Residues are color-coded according to the number of geometric quality criteria for which they contain at least one outlier: green = 0, yellow = 1, orange = 2 and red = 3 or more. A red dot above a residue indicates a poor fit to the electron density ($RSRZ > 2$). Stretches of 2 or more consecutive residues without any outlier are shown as a green connector. Residues present in the sample, but not in the model, are shown in grey.

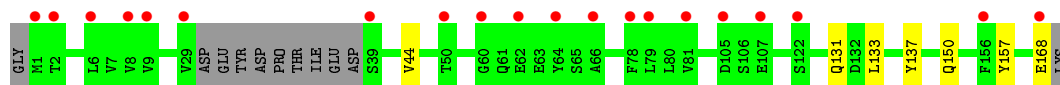
• Molecule 1: K-Ras GTPase

Chain A: 




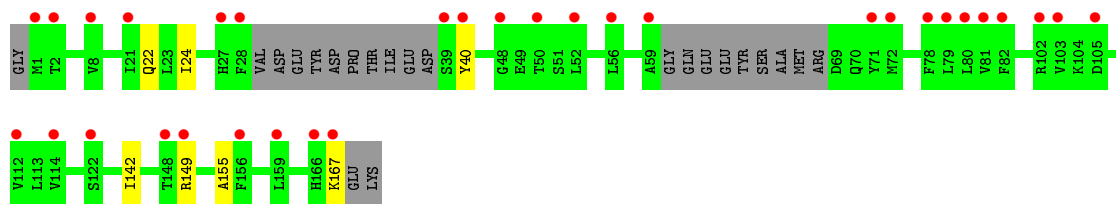
• Molecule 1: K-Ras GTPase

Chain B: 



• Molecule 1: K-Ras GTPase

Chain C: 



4 Data and refinement statistics

Property	Value	Source
Space group	C 1 2 1	Depositor
Cell constants a, b, c, α , β , γ	68.49 Å 84.82 Å 86.78 Å 90.00° 110.93° 90.00°	Depositor
Resolution (Å)	21.95 – 1.55 21.94 – 1.55	Depositor EDS
% Data completeness (in resolution range)	99.2 (21.95-1.55) 94.7 (21.94-1.55)	Depositor EDS
R_{merge}	0.04	Depositor
R_{sym}	0.04	Depositor
$\langle I/\sigma(I) \rangle$ ¹	3.65 (at 1.55 Å)	Xtriage
Refinement program	PHENIX (phenix.refine: dev_1402)	Depositor
R, R_{free}	0.180 , 0.197 0.193 , 0.211	Depositor DCC
R_{free} test set	2003 reflections (3.26%)	DCC
Wilson B-factor (Å ²)	25.0	Xtriage
Anisotropy	0.335	Xtriage
Bulk solvent k_{sol} (e/Å ³), B_{sol} (Å ²)	0.41 , 49.3	EDS
Estimated twinning fraction	0.010 for h,-k,-h-l	Xtriage
L-test for twinning ²	$\langle L \rangle = 0.50$, $\langle L^2 \rangle = 0.34$	Xtriage
Outliers	0 of 66351 reflections	Xtriage
F_o, F_c correlation	0.97	EDS
Total number of atoms	7594	wwPDB-VP
Average B, all atoms (Å ²)	45.0	wwPDB-VP

Xtriage's analysis on translational NCS is as follows: *The largest off-origin peak in the Patterson function is 5.31% of the height of the origin peak. No significant pseudotranslation is detected.*

¹ Intensities estimated from amplitudes.

² Theoretical values of $\langle |L| \rangle$, $\langle L^2 \rangle$ for acentric reflections are 0.5, 0.375 respectively for untwinned datasets, and 0.333, 0.2 for perfectly twinned datasets.

5 Model quality

5.1 Standard geometry

Bond lengths and bond angles in the following residue types are not validated in this section: GDP, 21K

The Z score for a bond length (or angle) is the number of standard deviations the observed value is removed from the expected value. A bond length (or angle) with $|Z| > 5$ is considered an outlier worth inspection. RMSZ is the root-mean-square of all Z scores of the bond lengths (or angles).

Mol	Chain	Bond lengths		Bond angles	
		RMSZ	# Z >5	RMSZ	# Z >5
1	A	0.42	0/1264	0.58	0/1703
1	B	0.39	0/1273	0.54	0/1714
1	C	0.35	0/1158	0.52	0/1563
All	All	0.39	0/3695	0.55	0/4980

There are no bond length outliers.

There are no bond angle outliers.

There are no chirality outliers.

There are no planarity outliers.

5.2 Too-close contacts

In the following table, the Non-H and H(model) columns list the number of non-hydrogen atoms and hydrogen atoms in the chain respectively. The H(added) column lists the number of hydrogen atoms added and optimized by MolProbity. The Clashes column lists the number of clashes within the asymmetric unit, whereas Symm-Clashes lists symmetry related clashes.

Mol	Chain	Non-H	H(model)	H(added)	Clashes	Symm-Clashes
1	A	1248	1230	1229	5	1
1	B	1250	1242	1239	6	0
1	C	1137	1122	1123	4	0
2	A	28	12	12	0	0
2	B	28	12	12	0	0
2	C	28	12	12	0	0
3	B	24	20	20	0	0
4	A	79	0	0	1	0
4	B	84	0	0	4	0
4	C	38	0	0	1	0
All	All	3944	3650	3647	15	1

The all-atom clashscore is defined as the number of clashes found per 1000 atoms (including hydrogen atoms). The all-atom clashscore for this structure is 2.

All (15) close contacts within the same asymmetric unit are listed below, sorted by their clash magnitude.

Atom-1	Atom-2	Interatomic distance (Å)	Clash overlap (Å)
1:A:37:GLU:OE2	4:A:343:HOH:O	2.15	0.65
1:B:150:GLN:NE2	4:B:339:HOH:O	2.38	0.56
1:B:131:GLN:OE1	4:B:380:HOH:O	2.18	0.55
1:A:41:ARG:HG3	1:A:52:LEU:HD21	1.93	0.50
1:B:168:GLU:C	4:B:346:HOH:O	2.51	0.49
1:A:41:ARG:CG	1:A:52:LEU:HD21	2.42	0.49
1:B:168:GLU:O	4:B:346:HOH:O	2.19	0.48
1:B:44:VAL:HG21	1:B:157:TYR:CE1	2.49	0.48
1:C:167:LYS:O	4:C:328:HOH:O	2.20	0.47
1:A:1:MET:HE1	1:A:52:LEU:HB2	1.98	0.46
1:C:22:GLN:O	1:C:149:ARG:NH1	2.46	0.45
1:C:142:ILE:HD12	1:C:155:ALA:HA	1.99	0.45
1:C:24:ILE:CD1	1:C:40:TYR:HB3	2.48	0.44
1:B:133:LEU:HD11	1:B:137:TYR:CZ	2.54	0.42
1:A:73:ARG:O	1:A:104:LYS:NZ	2.53	0.41

All (1) symmetry-related close contacts are listed below. The label for Atom-2 includes the symmetry operator and encoded unit-cell translations to be applied.

Atom-1	Atom-2	Interatomic distance (Å)	Clash overlap (Å)
1:A:50:THR:HG1	1:A:50:THR:HG1[2_655]	1.14	0.46

5.3 Torsion angles ⓘ

5.3.1 Protein backbone ⓘ

In the following table, the Percentiles column shows the percent Ramachandran outliers of the chain as a percentile score with respect to all X-ray entries followed by that with respect to entries of similar resolution.

The Analysed column shows the number of residues for which the backbone conformation was analysed, and the total number of residues.

Mol	Chain	Analysed	Favoured	Allowed	Outliers	Percentiles	
1	A	157/170 (92%)	155 (99%)	2 (1%)	0	100	100

Continued on next page...

Continued from previous page...

Mol	Chain	Analysed	Favoured	Allowed	Outliers	Percentiles	
1	B	157/170 (92%)	156 (99%)	1 (1%)	0	100	100
1	C	144/170 (85%)	141 (98%)	3 (2%)	0	100	100
All	All	458/510 (90%)	452 (99%)	6 (1%)	0	100	100

There are no Ramachandran outliers to report.

5.3.2 Protein sidechains [i](#)

In the following table, the Percentiles column shows the percent sidechain outliers of the chain as a percentile score with respect to all X-ray entries followed by that with respect to entries of similar resolution.

The Analysed column shows the number of residues for which the sidechain conformation was analysed, and the total number of residues.

Mol	Chain	Analysed	Rotameric	Outliers	Percentiles	
1	A	133/150 (89%)	133 (100%)	0	100	100
1	B	135/150 (90%)	135 (100%)	0	100	100
1	C	121/150 (81%)	121 (100%)	0	100	100
All	All	389/450 (86%)	389 (100%)	0	100	100

There are no protein residues with a non-rotameric sidechain to report.

Some sidechains can be flipped to improve hydrogen bonding and reduce clashes. There are no such sidechains identified.

5.3.3 RNA [i](#)

There are no RNA molecules in this entry.

5.4 Non-standard residues in protein, DNA, RNA chains [i](#)

There are no non-standard protein/DNA/RNA residues in this entry.

5.5 Carbohydrates [i](#)

There are no carbohydrates in this entry.

5.6 Ligand geometry

4 ligands are modelled in this entry.

In the following table, the Counts columns list the number of bonds (or angles) for which Mogul statistics could be retrieved, the number of bonds (or angles) that are observed in the model and the number of bonds (or angles) that are defined in the chemical component dictionary. The Link column lists molecule types, if any, to which the group is linked. The Z score for a bond length (or angle) is the number of standard deviations the observed value is removed from the expected value. A bond length (or angle) with $|Z| > 2$ is considered an outlier worth inspection. RMSZ is the root-mean-square of all Z scores of the bond lengths (or angles).

Mol	Type	Chain	Res	Link	Bond lengths			Bond angles		
					Counts	RMSZ	# $ Z > 2$	Counts	RMSZ	# $ Z > 2$
2	GDP	A	201	-	23,30,30	1.04	1 (4%)	28,47,47	1.66	2 (7%)
3	21K	B	201	1	24,25,25	1.25	2 (8%)	32,35,35	2.24	7 (21%)
2	GDP	B	202	-	23,30,30	1.03	2 (8%)	28,47,47	2.09	5 (17%)
2	GDP	C	201	-	23,30,30	1.28	3 (13%)	28,47,47	1.56	6 (21%)

In the following table, the Chirals column lists the number of chiral outliers, the number of chiral centers analysed, the number of these observed in the model and the number defined in the chemical component dictionary. Similar counts are reported in the Torsion and Rings columns. '-' means no outliers of that kind were identified.

Mol	Type	Chain	Res	Link	Chirals	Torsions	Rings
2	GDP	A	201	-	-	0/12/32/32	0/3/3/3
3	21K	B	201	1	-	0/17/27/27	0/2/2/2
2	GDP	B	202	-	-	0/12/32/32	0/3/3/3
2	GDP	C	201	-	-	0/12/32/32	0/3/3/3

All (8) bond length outliers are listed below:

Mol	Chain	Res	Type	Atoms	Z	Observed(Å)	Ideal(Å)
2	C	201	GDP	C6-N1	-2.16	1.33	1.36
3	B	201	21K	C11-N10	2.20	1.43	1.37
2	B	202	GDP	C6-C5	2.41	1.45	1.41
2	A	201	GDP	C5-C4	2.56	1.46	1.40
2	B	202	GDP	C5-C4	2.66	1.46	1.40
2	C	201	GDP	C5-C4	2.87	1.47	1.40
3	B	201	21K	C08-N07	3.34	1.42	1.35
2	C	201	GDP	C6-C5	3.39	1.47	1.41

All (20) bond angle outliers are listed below:

Mol	Chain	Res	Type	Atoms	Z	Observed(°)	Ideal(°)
3	B	201	21K	O24-S02-O01	-8.20	105.17	119.34
2	B	202	GDP	N2-C2-N3	-4.47	114.59	120.29
2	C	201	GDP	C4-C5-N7	-3.48	106.28	109.48
2	C	201	GDP	C1'-N9-C4	-3.03	122.37	126.94
3	B	201	21K	C16-C17-C11	-3.00	118.88	121.75
2	A	201	GDP	C4-C5-N7	-2.93	106.78	109.48
2	B	202	GDP	C1'-N9-C4	-2.87	122.62	126.94
2	B	202	GDP	C4-C5-N7	-2.42	107.25	109.48
3	B	201	21K	C09-N10-C11	-2.26	120.25	123.73
2	C	201	GDP	C2'-C1'-N9	-2.20	110.93	114.29
2	C	201	GDP	PA-O3A-PB	-2.18	125.37	132.67
2	C	201	GDP	N2-C2-N3	-2.12	117.59	120.29
3	B	201	21K	C08-C09-N10	2.37	116.52	111.08
3	B	201	21K	C06-C05-C04	2.94	115.10	110.37
3	B	201	21K	C20-C21-C04	3.56	116.09	110.37
3	B	201	21K	C05-C06-N07	3.87	116.68	111.07
2	B	202	GDP	N2-C2-N1	4.02	122.19	117.80
2	C	201	GDP	C6-N1-C2	4.03	122.47	120.20
2	A	201	GDP	C6-N1-C2	6.54	123.89	120.20
2	B	202	GDP	C6-N1-C2	7.72	124.56	120.20

There are no chirality outliers.

There are no torsion outliers.

There are no ring outliers.

No monomer is involved in short contacts.

5.7 Other polymers ⓘ

There are no such residues in this entry.

5.8 Polymer linkage issues ⓘ

There are no chain breaks in this entry.

6 Fit of model and data

6.1 Protein, DNA and RNA chains

In the following table, the column labelled ‘#RSRZ> 2’ contains the number (and percentage) of RSRZ outliers, followed by percent RSRZ outliers for the chain as percentile scores relative to all X-ray entries and entries of similar resolution. The OWAB column contains the minimum, median, 95th percentile and maximum values of the occupancy-weighted average B-factor per residue. The column labelled ‘Q< 0.9’ lists the number of (and percentage) of residues with an average occupancy less than 0.9.

Mol	Chain	Analysed	<RSRZ>	#RSRZ>2	OWAB(Å ²)	Q<0.9
1	A	161/170 (94%)	0.54	21 (13%) 5 4	18, 32, 72, 88	0
1	B	159/170 (93%)	0.56	20 (12%) 5 5	19, 36, 70, 89	0
1	C	148/170 (87%)	0.96	32 (21%) 1 1	22, 46, 73, 89	0
All	All	468/510 (91%)	0.68	73 (15%) 3 2	18, 37, 72, 89	0

All (73) RSRZ outliers are listed below:

Mol	Chain	Res	Type	RSRZ
1	B	64	TYR	6.7
1	C	48	GLY	6.6
1	C	40	TYR	6.4
1	C	59	ALA	6.0
1	A	103	VAL	5.8
1	C	79	LEU	5.6
1	C	71	TYR	5.3
1	B	29	VAL	5.1
1	C	39	SER	4.9
1	B	1	MET	4.7
1	C	27	HIS	4.3
1	A	1	MET	4.2
1	A	61	GLN	4.2
1	A	60	GLY	4.1
1	B	39	SER	4.0
1	A	66	ALA	4.0
1	C	80	LEU	3.8
1	C	1	MET	3.7
1	A	67	MET	3.6
1	C	81	VAL	3.5
1	A	30	ASP	3.5
1	C	28	PHE	3.5
1	C	21	ILE	3.4

Continued on next page...

Continued from previous page...

Mol	Chain	Res	Type	RSRZ
1	A	65	SER	3.3
1	C	78	PHE	3.3
1	A	79	LEU	3.3
1	A	64	TYR	3.3
1	C	103	VAL	3.3
1	C	122	SER	3.1
1	B	60	GLY	3.1
1	A	80	LEU	3.1
1	A	165	LYS	3.0
1	C	56	LEU	2.9
1	B	79	LEU	2.9
1	C	72	MET	2.8
1	B	2	THR	2.8
1	B	50	THR	2.8
1	B	9	VAL	2.8
1	C	167	LYS	2.8
1	C	159	LEU	2.7
1	C	156	PHE	2.7
1	C	50	THR	2.7
1	A	107	GLU	2.7
1	A	102	ARG	2.6
1	C	102	ARG	2.6
1	B	105	ASP	2.6
1	C	52	LEU	2.5
1	C	112	VAL	2.5
1	A	114	VAL	2.5
1	A	37	GLU	2.5
1	C	105	ASP	2.5
1	B	156	PHE	2.4
1	B	168	GLU	2.4
1	C	82	PHE	2.3
1	A	8	VAL	2.3
1	A	108	ASP	2.3
1	C	2	THR	2.3
1	B	81	VAL	2.3
1	C	166	HIS	2.3
1	A	78	PHE	2.3
1	A	62	GLU	2.2
1	B	66	ALA	2.2
1	B	107	GLU	2.2
1	C	149	ARG	2.2
1	B	62	GLU	2.2

Continued on next page...

Continued from previous page...

Mol	Chain	Res	Type	RSRZ
1	C	148	THR	2.1
1	C	114	VAL	2.1
1	B	78	PHE	2.1
1	A	156	PHE	2.1
1	B	8	VAL	2.1
1	C	8	VAL	2.0
1	B	6	LEU	2.0
1	B	122	SER	2.0

6.2 Non-standard residues in protein, DNA, RNA chains [i](#)

There are no non-standard protein/DNA/RNA residues in this entry.

6.3 Carbohydrates [i](#)

There are no carbohydrates in this entry.

6.4 Ligands [i](#)

In the following table, the Atoms column lists the number of modelled atoms in the group and the number defined in the chemical component dictionary. LLDF column lists the quality of electron density of the group with respect to its neighbouring residues in protein, DNA or RNA chains. The B-factors column lists the minimum, median, 95th percentile and maximum values of B factors of atoms in the group. The column labelled 'Q< 0.9' lists the number of atoms with occupancy less than 0.9.

Mol	Type	Chain	Res	Atoms	RSCC	RSR	LLDF	B-factors(Å ²)	Q<0.9
2	GDP	C	201	28/28	0.93	0.10	-0.20	28,40,61,81	0
2	GDP	A	201	28/28	0.97	0.07	-0.38	19,26,37,44	0
3	21K	B	201	24/24	0.94	0.10	-0.70	27,34,44,73	0
2	GDP	B	202	28/28	0.98	0.06	-0.96	22,29,38,43	0

6.5 Other polymers [i](#)

There are no such residues in this entry.