



Full wwPDB X-ray Structure Validation Report ⓘ

Feb 1, 2016 – 10:27 AM GMT

PDB ID : 3M24
Title : Crystal structure of TagBFP fluorescent protein
Authors : Malashkevich, V.N.; Subach, O.M.; Almo, S.C.; Verkhusha, V.V.
Deposited on : 2010-03-06
Resolution : 2.20 Å(reported)

This is a Full wwPDB X-ray Structure Validation Report for a publicly released PDB entry.
We welcome your comments at validation@mail.wwpdb.org
A user guide is available at
<http://wwpdb.org/validation/2016/XrayValidationReportHelp>
with specific help available everywhere you see the ⓘ symbol.

The following versions of software and data (see [references ⓘ](#)) were used in the production of this report:

MolProbity : 4.02b-467
Mogul : 1.7 (RC4), CSD as536be (2015)
Xtriage (Phenix) : 1.9-1692
EDS : rb-20026688
Percentile statistics : 20151230.v01 (using entries in the PDB archive December 30th 2015)
Refmac : 5.8.0135
CCP4 : 6.5.0
Ideal geometry (proteins) : Engh & Huber (2001)
Ideal geometry (DNA, RNA) : Parkinson et al. (1996)
Validation Pipeline (wwPDB-VP) : trunk26865

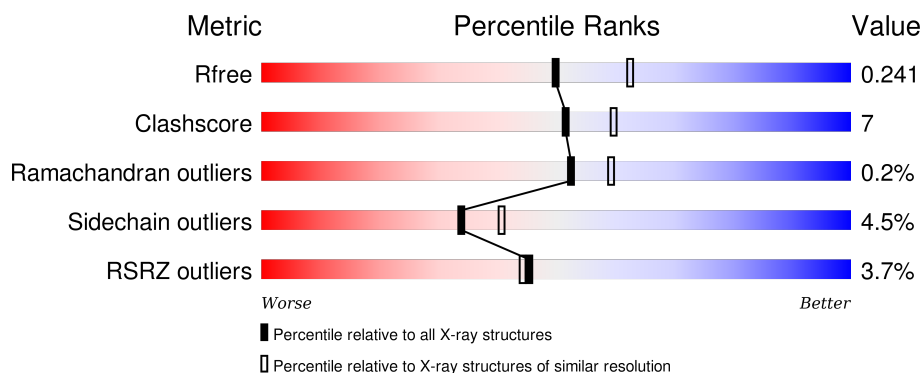
1 Overall quality at a glance ⓘ

The following experimental techniques were used to determine the structure:

X-RAY DIFFRACTION

The reported resolution of this entry is 2.20 Å.

Percentile scores (ranging between 0-100) for global validation metrics of the entry are shown in the following graphic. The table shows the number of entries on which the scores are based.



Metric	Whole archive (#Entries)	Similar resolution (#Entries, resolution range(Å))
R_{free}	91344	3774 (2.20-2.20)
Clashscore	102246	4477 (2.20-2.20)
Ramachandran outliers	100387	4404 (2.20-2.20)
Sidechain outliers	100360	4405 (2.20-2.20)
RSRZ outliers	91569	3781 (2.20-2.20)

The table below summarises the geometric issues observed across the polymeric chains and their fit to the electron density. The red, orange, yellow and green segments on the lower bar indicate the fraction of residues that contain outliers for ≥ 3 , 2, 1 and 0 types of geometric quality criteria. A grey segment represents the fraction of residues that are not modelled. The numeric value for each fraction is indicated below the corresponding segment, with a dot representing fractions $\leq 5\%$. The upper red bar (where present) indicates the fraction of residues that have poor fit to the electron density. The numeric value is given above the bar.

Mol	Chain	Length	Quality of chain
1	A	232	<div> <div>2%</div> <div>82%</div> <div>13%</div> <div>• •</div> </div>
1	B	232	<div> <div>3%</div> <div>79%</div> <div>17%</div> <div>• •</div> </div>
1	C	232	<div> <div>3%</div> <div>83%</div> <div>14%</div> <div>• •</div> </div>
1	D	232	<div> <div>6%</div> <div>78%</div> <div>18%</div> <div>• •</div> </div>

The following table lists non-polymeric compounds, carbohydrate monomers and non-standard

residues in protein, DNA, RNA chains that are outliers for geometric or electron-density-fit criteria:

Mol	Type	Chain	Res	Chirality	Geometry	Clashes	Electron density
1	NRP	D	63	-	-	X	-
2	DTT	A	501	-	-	-	X
2	DTT	B	501	-	-	-	X
2	DTT	C	501	-	-	-	X
2	DTT	D	501	-	-	-	X

2 Entry composition [i](#)

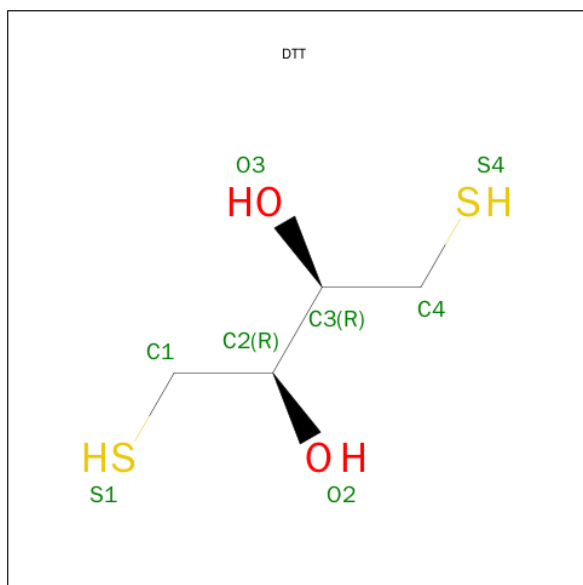
There are 5 unique types of molecules in this entry. The entry contains 7761 atoms, of which 0 are hydrogens and 0 are deuteriums.

In the tables below, the ZeroOcc column contains the number of atoms modelled with zero occupancy, the AltConf column contains the number of residues with at least one atom in alternate conformation and the Trace column contains the number of residues modelled with at most 2 atoms.

- Molecule 1 is a protein called TagBFP.

Mol	Chain	Residues	Atoms					ZeroOcc	AltConf	Trace
1	A	226	Total	C	N	O	S	0	0	0
			1809	1151	302	345	11			
1	B	228	Total	C	N	O	S	0	1	0
			1826	1162	305	348	11			
1	C	227	Total	C	N	O	S	0	0	0
			1817	1157	303	346	11			
1	D	225	Total	C	N	O	S	0	0	0
			1803	1149	301	343	10			

- Molecule 2 is 2,3-DIHYDROXY-1,4-DITHIOBUTANE (three-letter code: DTT) (formula: $C_4H_{10}O_2S_2$).



Mol	Chain	Residues	Atoms			ZeroOcc	AltConf
2	A	1	Total	C	S	0	0
			3	2	1		
2	B	1	Total	C	S	0	0
			3	2	1		

Continued on next page...

Continued from previous page...

Mol	Chain	Residues	Atoms			ZeroOcc	AltConf
2	C	1	Total	C	S	0	0
			3	2	1		
2	D	1	Total	C	S	0	0
			3	2	1		

- Molecule 3 is GLYCEROL (three-letter code: GOL) (formula: $C_3H_8O_3$).



Mol	Chain	Residues	Atoms			ZeroOcc	AltConf
3	A	1	Total	C	O	0	0
			6	3	3		
3	A	1	Total	C	O	0	0
			6	3	3		
3	A	1	Total	C	O	0	0
			6	3	3		
3	A	1	Total	C	O	0	0
			6	3	3		
3	B	1	Total	C	O	0	0
			6	3	3		
3	C	1	Total	C	O	0	0
			6	3	3		
3	D	1	Total	C	O	0	0
			6	3	3		

- Molecule 4 is CHLORIDE ION (three-letter code: CL) (formula: Cl).

Mol	Chain	Residues	Atoms		ZeroOcc	AltConf
4	A	1	Total 1	Cl 1	0	0
4	C	1	Total 1	Cl 1	0	0

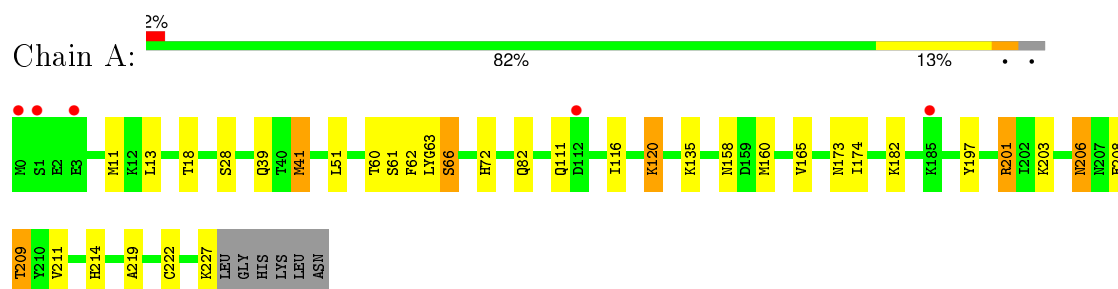
- Molecule 5 is water.

Mol	Chain	Residues	Atoms		ZeroOcc	AltConf
5	A	137	Total 137	O 137	0	0
5	B	126	Total 126	O 126	0	0
5	C	114	Total 114	O 114	0	0
5	D	73	Total 73	O 73	0	0

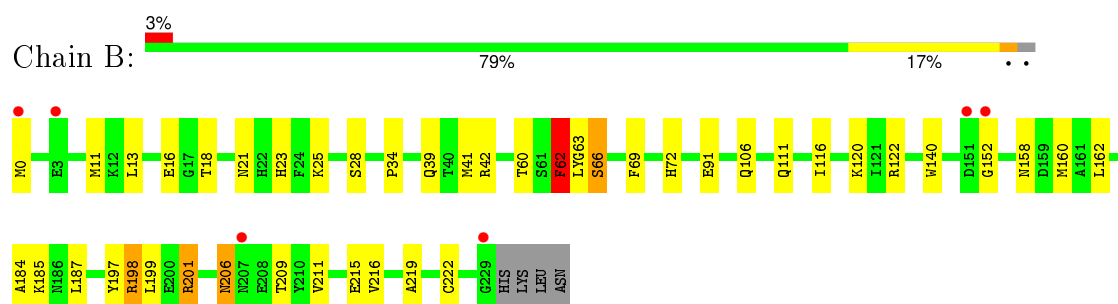
3 Residue-property plots [i](#)

These plots are drawn for all protein, RNA and DNA chains in the entry. The first graphic for a chain summarises the proportions of errors displayed in the second graphic. The second graphic shows the sequence view annotated by issues in geometry and electron density. Residues are color-coded according to the number of geometric quality criteria for which they contain at least one outlier: green = 0, yellow = 1, orange = 2 and red = 3 or more. A red dot above a residue indicates a poor fit to the electron density ($RSRZ > 2$). Stretches of 2 or more consecutive residues without any outlier are shown as a green connector. Residues present in the sample, but not in the model, are shown in grey.

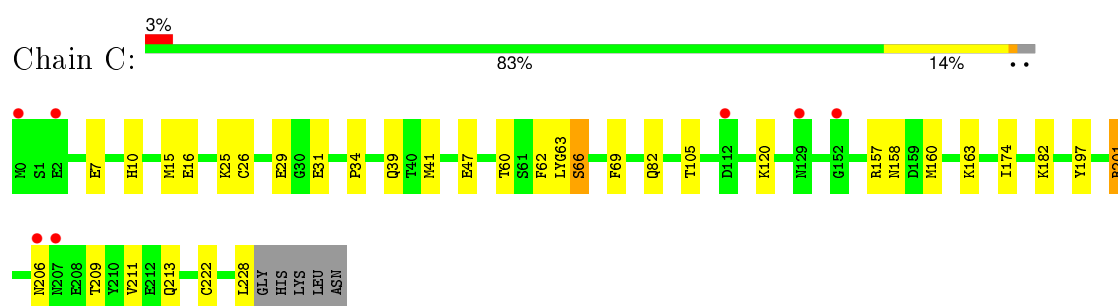
• Molecule 1: TagBFP



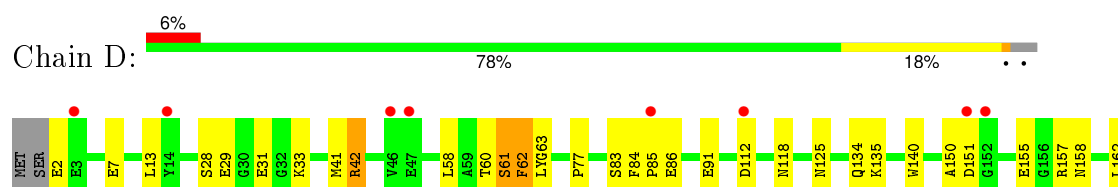
• Molecule 1: TagBFP

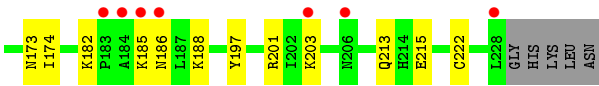


• Molecule 1: TagBFP



• Molecule 1: TagBFP





4 Data and refinement statistics

Property	Value	Source
Space group	P 21 21 21	Depositor
Cell constants a, b, c, α , β , γ	82.95Å 105.94Å 137.16Å 90.00° 90.00° 90.00°	Depositor
Resolution (Å)	19.94 – 2.20 19.94 – 2.20	Depositor EDS
% Data completeness (in resolution range)	87.8 (19.94-2.20) 87.8 (19.94-2.20)	Depositor EDS
R_{merge}	0.07	Depositor
R_{sym}	(Not available)	Depositor
$\langle I/\sigma(I) \rangle$ ¹	3.93 (at 2.19Å)	Xtriage
Refinement program	REFMAC 5.5.0089	Depositor
R, R_{free}	0.193 , 0.238 0.195 , 0.241	Depositor DCC
R_{free} test set	2739 reflections (5.30%)	DCC
Wilson B-factor (Å ²)	23.2	Xtriage
Anisotropy	0.119	Xtriage
Bulk solvent k_{sol} (e/Å ³), B_{sol} (Å ²)	0.31 , 31.2	EDS
Estimated twinning fraction	No twinning to report.	Xtriage
L-test for twinning ²	$\langle L \rangle = 0.49$, $\langle L^2 \rangle = 0.33$	Xtriage
Outliers	1 of 54375 reflections (0.002%)	Xtriage
F_o, F_c correlation	0.94	EDS
Total number of atoms	7761	wwPDB-VP
Average B, all atoms (Å ²)	16.0	wwPDB-VP

Xtriage's analysis on translational NCS is as follows: *The largest off-origin peak in the Patterson function is 4.30% of the height of the origin peak. No significant pseudotranslation is detected.*

¹Intensities estimated from amplitudes.

²Theoretical values of $\langle |L| \rangle$, $\langle L^2 \rangle$ for acentric reflections are 0.5, 0.375 respectively for untwinned datasets, and 0.333, 0.2 for perfectly twinned datasets.

5 Model quality

5.1 Standard geometry

Bond lengths and bond angles in the following residue types are not validated in this section: GOL, CL, NRP, DTT

The Z score for a bond length (or angle) is the number of standard deviations the observed value is removed from the expected value. A bond length (or angle) with $|Z| > 5$ is considered an outlier worth inspection. RMSZ is the root-mean-square of all Z scores of the bond lengths (or angles).

Mol	Chain	Bond lengths		Bond angles	
		RMSZ	$\# Z > 5$	RMSZ	$\# Z > 5$
1	A	0.64	5/1826 (0.3%)	0.66	2/2464 (0.1%)
1	B	0.57	1/1846 (0.1%)	0.66	3/2491 (0.1%)
1	C	0.56	0/1834	0.65	3/2475 (0.1%)
1	D	0.53	2/1820 (0.1%)	0.61	1/2457 (0.0%)
All	All	0.58	8/7326 (0.1%)	0.64	9/9887 (0.1%)

Chiral center outliers are detected by calculating the chiral volume of a chiral center and verifying if the center is modelled as a planar moiety or with the opposite hand. A planarity outlier is detected by checking planarity of atoms in a peptide group, atoms in a mainchain group or atoms of a sidechain that are expected to be planar.

Mol	Chain	#Chirality outliers	#Planarity outliers
1	B	0	1

All (8) bond length outliers are listed below:

Mol	Chain	Res	Type	Atoms	Z	Observed(Å)	Ideal(Å)
1	A	62	PHE	CA-C	-8.75	1.30	1.52
1	A	66	SER	N-CA	-5.89	1.34	1.46
1	B	66	SER	N-CA	-5.53	1.35	1.46
1	A	61	SER	CB-OG	-5.26	1.35	1.42
1	A	62	PHE	C-O	5.24	1.33	1.23
1	D	62	PHE	CA-C	-5.17	1.39	1.52
1	A	208	GLU	CG-CD	5.09	1.59	1.51
1	D	62	PHE	C-O	5.09	1.33	1.23

All (9) bond angle outliers are listed below:

Mol	Chain	Res	Type	Atoms	Z	Observed(°)	Ideal(°)
1	A	62	PHE	CB-CA-C	10.07	130.55	110.40

Continued on next page...

Continued from previous page...

Mol	Chain	Res	Type	Atoms	Z	Observed(°)	Ideal(°)
1	C	62	PHE	CB-CA-C	9.68	129.76	110.40
1	D	62	PHE	CB-CA-C	8.90	128.20	110.40
1	B	66	SER	N-CA-CB	-8.79	97.31	110.50
1	C	66	SER	N-CA-CB	-7.96	98.56	110.50
1	A	66	SER	N-CA-CB	-5.90	101.65	110.50
1	B	62	PHE	CA-C-O	5.88	132.45	120.10
1	C	62	PHE	N-CA-CB	-5.41	100.86	110.60
1	B	198	ARG	NE-CZ-NH2	-5.08	117.76	120.30

There are no chirality outliers.

All (1) planarity outliers are listed below:

Mol	Chain	Res	Type	Group
1	B	62	PHE	Mainchain

5.2 Too-close contacts

In the following table, the Non-H and H(model) columns list the number of non-hydrogen atoms and hydrogen atoms in the chain respectively. The H(added) column lists the number of hydrogen atoms added and optimized by MolProbity. The Clashes column lists the number of clashes within the asymmetric unit, whereas Symm-Clashes lists symmetry related clashes.

Mol	Chain	Non-H	H(model)	H(added)	Clashes	Symm-Clashes
1	A	1809	0	1765	22	0
1	B	1826	0	1786	27	0
1	C	1817	0	1777	21	0
1	D	1803	0	1760	28	0
2	A	3	0	3	1	0
2	B	3	0	3	1	0
2	C	3	0	3	2	0
2	D	3	0	3	1	0
3	A	24	0	32	0	0
3	B	6	0	8	2	0
3	C	6	0	8	1	0
3	D	6	0	8	1	0
4	A	1	0	0	0	0
4	C	1	0	0	0	0
5	A	137	0	0	1	0
5	B	126	0	0	2	0
5	C	114	0	0	2	0
5	D	73	0	0	2	0

Continued on next page...

Continued from previous page...

Mol	Chain	Non-H	H(model)	H(added)	Clashes	Symm-Clashes
All	All	7761	0	7156	98	0

The all-atom clashscore is defined as the number of clashes found per 1000 atoms (including hydrogen atoms). The all-atom clashscore for this structure is 7.

All (98) close contacts within the same asymmetric unit are listed below, sorted by their clash magnitude.

Atom-1	Atom-2	Interatomic distance (Å)	Clash overlap (Å)
1:C:222:CYS:SG	2:C:501:DTT:S4	2.50	0.98
1:D:150:ALA:HB3	1:D:155:GLU:HG3	1.49	0.93
1:A:82:GLN:O	1:A:182:LYS:HE3	1.75	0.84
1:A:60:THR:HB	1:A:63:NRP:HD1	1.60	0.83
1:D:63:NRP:HD3A	1:D:213:GLN:HE21	1.47	0.78
1:B:201:ARG:HD2	1:B:211:VAL:HG13	1.72	0.72
1:D:77:PRO:HB3	1:D:188:LYS:HG3	1.73	0.71
1:A:222:CYS:SG	2:A:501:DTT:S4	2.48	0.69
1:A:63:NRP:HD4A	1:A:66:SER:HB3	1.75	0.66
1:D:222:CYS:SG	2:D:501:DTT:S4	2.45	0.66
1:C:82:GLN:O	1:C:182:LYS:HE3	1.94	0.66
1:B:122:ARG:HH22	3:B:506:GOL:H2	1.62	0.64
1:B:222:CYS:SG	2:B:501:DTT:S4	2.49	0.64
1:A:111:GLN:HB2	1:A:116:ILE:HD13	1.80	0.63
1:D:63:NRP:HD4A	1:D:215:GLU:OE2	2.00	0.62
1:D:150:ALA:HB3	1:D:155:GLU:CG	2.29	0.61
1:D:60:THR:HB	1:D:63:NRP:HD1	1.83	0.60
1:B:16:GLU:HB3	1:B:25:LYS:HG3	1.83	0.60
1:A:39:GLN:CD	1:A:63:NRP:HD4	2.23	0.58
1:B:63:NRP:HD2	1:B:197:TYR:CE2	2.40	0.57
1:D:63:NRP:HD4A	1:D:215:GLU:CD	2.26	0.56
1:B:63:NRP:HD4	1:B:215:GLU:HB2	1.88	0.56
1:B:111:GLN:HB2	1:B:116:ILE:HD13	1.87	0.55
1:A:214:HIS:HD2	5:A:344:HOH:O	1.88	0.55
1:C:60:THR:HB	1:C:63:NRP:HD1	1.89	0.55
1:A:39:GLN:NE2	1:A:63:NRP:HD4	2.22	0.55
1:D:188:LYS:HA	5:D:368:HOH:O	2.06	0.54
1:A:63:NRP:HD2	1:A:197:TYR:CZ	2.43	0.54
1:A:201:ARG:HD2	1:A:211:VAL:HG13	1.90	0.54
1:D:150:ALA:CB	1:D:155:GLU:HG3	2.30	0.54
1:D:63:NRP:HD3A	1:D:213:GLN:NE2	2.21	0.53
1:B:34:PRO:HA	1:B:69:PHE:HA	1.90	0.52
1:A:63:NRP:HD4A	1:A:66:SER:CB	2.40	0.52

Continued on next page...

Continued from previous page...

Atom-1	Atom-2	Interatomic distance (Å)	Clash overlap (Å)
1:D:58:LEU:O	1:D:61:SER:HB2	2.10	0.52
1:C:63:NRP:HD2	1:C:197:TYR:CE2	2.45	0.51
1:A:158:ASN:ND2	1:A:160:MET:HG3	2.25	0.51
1:D:182:LYS:HD3	1:D:186:ASN:HB3	1.91	0.51
1:D:173:ASN:C	1:D:174:ILE:HD12	2.31	0.51
1:D:63:NRP:N	1:D:63:NRP:HD3B	2.26	0.51
1:C:10:HIS:HD2	1:C:31:GLU:HB3	1.75	0.51
1:B:60:THR:HB	1:B:63:NRP:HD1	1.93	0.50
1:C:82:GLN:O	1:C:182:LYS:CE	2.59	0.50
1:A:51:LEU:O	1:A:135:LYS:HE3	2.12	0.49
1:C:201:ARG:HD2	1:C:211:VAL:HG13	1.94	0.49
1:B:18:THR:HG22	1:B:23:HIS:HA	1.94	0.49
1:A:39:GLN:HE22	1:A:66:SER:HB3	1.78	0.49
1:C:158:ASN:ND2	1:C:160:MET:HG3	2.28	0.48
5:B:379:HOH:O	1:D:125:ASN:HB3	2.12	0.48
1:D:62:PHE:C	1:D:63:NRP:HD3B	2.34	0.48
1:A:72:HIS:HA	1:A:219:ALA:HB3	1.96	0.47
1:C:7:GLU:HG2	5:C:312:HOH:O	2.14	0.47
1:D:174:ILE:N	1:D:174:ILE:HD12	2.29	0.47
1:D:63:NRP:CD4	1:D:215:GLU:HB2	2.45	0.47
1:A:11:MET:HG3	1:A:41:MET:CE	2.45	0.47
1:C:63:NRP:OH	1:C:158:ASN:OD1	2.33	0.46
1:A:120:LYS:HE3	3:D:503:GOL:H31	1.98	0.46
1:C:34:PRO:HA	1:C:69:PHE:HA	1.97	0.46
1:B:91:GLU:HG3	5:C:302:HOH:O	2.16	0.46
1:D:63:NRP:HD2	1:D:197:TYR:CE2	2.50	0.46
1:B:63:NRP:HD4B	1:B:199:LEU:HD13	1.97	0.46
3:B:506:GOL:H31	1:C:120:LYS:HE3	1.97	0.46
1:D:63:NRP:HB2	1:D:197:TYR:CE1	2.50	0.46
1:B:13:LEU:HB3	1:B:28:SER:OG	2.16	0.46
1:B:63:NRP:CD4	1:B:199:LEU:HD13	2.46	0.45
1:D:157:ARG:O	1:D:158:ASN:HB3	2.15	0.45
1:D:83:SER:O	1:D:86:GLU:HG2	2.17	0.45
1:A:63:NRP:CD4	1:A:66:SER:HB3	2.46	0.45
1:B:11:MET:HG3	1:B:41:MET:HE3	1.99	0.45
1:A:51:LEU:O	1:A:135:LYS:CE	2.65	0.44
1:D:91:GLU:HG3	5:D:300:HOH:O	2.17	0.44
1:B:140:TRP:CZ3	1:B:162:LEU:HB2	2.53	0.44
1:C:15:MET:HB3	1:C:26:CYS:HB2	1.99	0.43
1:B:158:ASN:ND2	1:B:160:MET:HG3	2.34	0.43
1:B:72:HIS:HA	1:B:219:ALA:HB3	2.00	0.43

Continued on next page...

Continued from previous page...

Atom-1	Atom-2	Interatomic distance (Å)	Clash overlap (Å)
1:C:25:LYS:HB2	1:C:47:GLU:HB2	1.99	0.43
1:C:157:ARG:O	1:C:158:ASN:HB3	2.19	0.43
1:D:84:PHE:HB3	1:D:85:PRO:HA	2.01	0.42
1:A:13:LEU:HB3	1:A:28:SER:OG	2.19	0.42
1:B:206:ASN:HB2	1:B:209:THR:HB	2.01	0.42
1:B:42:ARG:NE	5:B:418:HOH:O	2.41	0.42
1:B:158:ASN:HD21	1:B:160:MET:HG3	1.85	0.42
1:B:63:NRP:HD2	1:B:197:TYR:CZ	2.54	0.42
1:B:39:GLN:HE22	1:B:66:SER:HB3	1.84	0.42
1:D:140:TRP:CZ3	1:D:162:LEU:HB2	2.55	0.41
1:C:206:ASN:O	1:C:209:THR:HB	2.20	0.41
1:D:13:LEU:HB3	1:D:28:SER:OG	2.20	0.41
1:C:174:ILE:N	1:C:174:ILE:HD12	2.35	0.41
1:D:31:GLU:OE1	1:D:42:ARG:NH2	2.54	0.41
1:B:184:ALA:HA	1:B:187:LEU:HD12	2.03	0.41
1:A:173:ASN:C	1:A:174:ILE:HD12	2.40	0.41
1:C:63:NRP:HD3A	1:C:213:GLN:HE21	1.84	0.41
1:B:120:LYS:HZ1	3:C:502:GOL:H31	1.85	0.41
1:C:39:GLN:HE22	1:C:66:SER:HB3	1.86	0.41
1:C:16:GLU:HB3	1:C:25:LYS:HG3	2.03	0.40
1:B:62:PHE:CA	1:B:63:NRP:HB1A	2.51	0.40
1:B:198:ARG:HB3	1:B:216:VAL:CG1	2.51	0.40
1:A:206:ASN:O	1:A:209:THR:HB	2.20	0.40
1:C:222:CYS:HG	2:C:501:DTT:C4	2.28	0.40

There are no symmetry-related clashes.

5.3 Torsion angles [i](#)

5.3.1 Protein backbone [i](#)

In the following table, the Percentiles column shows the percent Ramachandran outliers of the chain as a percentile score with respect to all X-ray entries followed by that with respect to entries of similar resolution.

The Analysed column shows the number of residues for which the backbone conformation was analysed, and the total number of residues.

Mol	Chain	Analysed	Favoured	Allowed	Outliers	Percentiles
1	A	223/232 (96%)	218 (98%)	5 (2%)	0	100 100

Continued on next page...

Continued from previous page...

Mol	Chain	Analysed	Favoured	Allowed	Outliers	Percentiles	
1	B	226/232 (97%)	220 (97%)	5 (2%)	1 (0%)	39	42
1	C	224/232 (97%)	217 (97%)	7 (3%)	0	100	100
1	D	222/232 (96%)	212 (96%)	9 (4%)	1 (0%)	34	35
All	All	895/928 (96%)	867 (97%)	26 (3%)	2 (0%)	52	59

All (2) Ramachandran outliers are listed below:

Mol	Chain	Res	Type
1	D	112	ASP
1	B	152	GLY

5.3.2 Protein sidechains ⓘ

In the following table, the Percentiles column shows the percent sidechain outliers of the chain as a percentile score with respect to all X-ray entries followed by that with respect to entries of similar resolution.

The Analysed column shows the number of residues for which the sidechain conformation was analysed, and the total number of residues.

Mol	Chain	Analysed	Rotameric	Outliers	Percentiles	
1	A	194/199 (98%)	185 (95%)	9 (5%)	33	40
1	B	196/199 (98%)	190 (97%)	6 (3%)	47	59
1	C	195/199 (98%)	189 (97%)	6 (3%)	47	59
1	D	193/199 (97%)	179 (93%)	14 (7%)	17	18
All	All	778/796 (98%)	743 (96%)	35 (4%)	34	41

All (35) residues with a non-rotameric sidechain are listed below:

Mol	Chain	Res	Type
1	A	18	THR
1	A	41	MET
1	A	120	LYS
1	A	165	VAL
1	A	201	ARG
1	A	203	LYS
1	A	206	ASN
1	A	209	THR
1	A	227	LYS

Continued on next page...

Continued from previous page...

Mol	Chain	Res	Type
1	B	0	MET
1	B	21	ASN
1	B	106	GLN
1	B	185	LYS
1	B	201	ARG
1	B	206	ASN
1	C	29	GLU
1	C	41	MET
1	C	105	THR
1	C	163	LYS
1	C	201	ARG
1	C	228	LEU
1	D	2	GLU
1	D	7	GLU
1	D	29	GLU
1	D	33	LYS
1	D	41	MET
1	D	42	ARG
1	D	61	SER
1	D	118	ASN
1	D	134	GLN
1	D	135	LYS
1	D	151	ASP
1	D	185	LYS
1	D	201	ARG
1	D	203	LYS

Some sidechains can be flipped to improve hydrogen bonding and reduce clashes. All (14) such sidechains are listed below:

Mol	Chain	Res	Type
1	A	158	ASN
1	A	214	HIS
1	B	21	ASN
1	B	23	HIS
1	B	39	GLN
1	B	158	ASN
1	C	10	HIS
1	C	39	GLN
1	C	158	ASN
1	C	186	ASN
1	C	213	GLN
1	D	125	ASN

Continued on next page...

Continued from previous page...

Mol	Chain	Res	Type
1	D	158	ASN
1	D	213	GLN

5.3.3 RNA ⓘ

There are no RNA molecules in this entry.

5.4 Non-standard residues in protein, DNA, RNA chains ⓘ

4 non-standard protein/DNA/RNA residues are modelled in this entry.

In the following table, the Counts columns list the number of bonds (or angles) for which Mogul statistics could be retrieved, the number of bonds (or angles) that are observed in the model and the number of bonds (or angles) that are defined in the chemical component dictionary. The Link column lists molecule types, if any, to which the group is linked. The Z score for a bond length (or angle) is the number of standard deviations the observed value is removed from the expected value. A bond length (or angle) with $|Z| > 2$ is considered an outlier worth inspection. RMSZ is the root-mean-square of all Z scores of the bond lengths (or angles).

Mol	Type	Chain	Res	Link	Bond lengths			Bond angles		
					Counts	RMSZ	# Z > 2	Counts	RMSZ	# Z > 2
1	NRP	A	63	1	22,24,25	4.34	8 (36%)	24,33,35	5.73	9 (37%)
1	NRP	B	63	1	22,24,25	4.82	9 (40%)	24,33,35	5.83	11 (45%)
1	NRP	C	63	1	22,24,25	4.56	7 (31%)	24,33,35	5.66	10 (41%)
1	NRP	D	63	1	22,24,25	4.35	9 (40%)	24,33,35	5.89	11 (45%)

In the following table, the Chirals column lists the number of chiral outliers, the number of chiral centers analysed, the number of these observed in the model and the number defined in the chemical component dictionary. Similar counts are reported in the Torsion and Rings columns. '-' means no outliers of that kind were identified.

Mol	Type	Chain	Res	Link	Chirals	Torsions	Rings
1	NRP	A	63	1	-	0/9/31/32	0/2/2/2
1	NRP	B	63	1	-	0/9/31/32	0/2/2/2
1	NRP	C	63	1	-	0/9/31/32	0/2/2/2
1	NRP	D	63	1	-	0/9/31/32	0/2/2/2

All (33) bond length outliers are listed below:

Mol	Chain	Res	Type	Atoms	Z	Observed(Å)	Ideal(Å)
1	C	63	NRP	C2-N3	-6.71	1.25	1.39

Continued on next page...

Continued from previous page...

Mol	Chain	Res	Type	Atoms	Z	Observed(Å)	Ideal(Å)
1	A	63	NRP	C2-N3	-5.57	1.27	1.39
1	B	63	NRP	C2-N3	-5.49	1.28	1.39
1	C	63	NRP	CA2-C2	-5.42	1.42	1.48
1	D	63	NRP	C2-N3	-5.37	1.28	1.39
1	A	63	NRP	CA3-N3	-4.70	1.39	1.47
1	A	63	NRP	CA2-C2	-4.28	1.43	1.48
1	B	63	NRP	CA2-N2	-3.96	1.29	1.38
1	D	63	NRP	CA2-N2	-3.54	1.30	1.38
1	C	63	NRP	CA3-N3	-3.47	1.41	1.47
1	C	63	NRP	CA2-N2	-3.44	1.30	1.38
1	B	63	NRP	CA3-N3	-3.25	1.41	1.47
1	D	63	NRP	CA2-C2	-3.09	1.45	1.48
1	A	63	NRP	CA2-N2	-2.95	1.32	1.38
1	D	63	NRP	C1-N3	-2.55	1.33	1.38
1	B	63	NRP	CA2-C2	-2.44	1.45	1.48
1	B	63	NRP	C1-N3	-2.23	1.34	1.38
1	A	63	NRP	CA3-C	-2.04	1.41	1.49
1	D	63	NRP	OH-CZ	-2.01	1.32	1.37
1	A	63	NRP	C1-N2	2.11	1.37	1.33
1	B	63	NRP	C1-N2	2.34	1.38	1.33
1	D	63	NRP	O-C	3.10	1.39	1.19
1	C	63	NRP	CA1-N	4.17	1.41	1.28
1	D	63	NRP	CA1-N	4.61	1.42	1.28
1	B	63	NRP	CA1-N	6.26	1.47	1.28
1	C	63	NRP	O2-C2	8.83	1.41	1.23
1	D	63	NRP	O2-C2	9.28	1.42	1.23
1	B	63	NRP	O2-C2	9.73	1.43	1.23
1	A	63	NRP	O2-C2	9.85	1.43	1.23
1	A	63	NRP	CB2-CA2	14.60	1.48	1.35
1	D	63	NRP	CB2-CA2	15.01	1.48	1.35
1	C	63	NRP	CB2-CA2	15.78	1.49	1.35
1	B	63	NRP	CB2-CA2	16.90	1.50	1.35

All (41) bond angle outliers are listed below:

Mol	Chain	Res	Type	Atoms	Z	Observed(°)	Ideal(°)
1	A	63	NRP	O2-C2-CA2	-15.35	122.66	130.95
1	C	63	NRP	O2-C2-CA2	-14.33	123.21	130.95
1	D	63	NRP	CG2-CB2-CA2	-13.40	112.82	130.22
1	B	63	NRP	CG2-CB2-CA2	-12.50	113.98	130.22
1	D	63	NRP	O2-C2-CA2	-11.22	124.89	130.95
1	A	63	NRP	CG2-CB2-CA2	-10.44	116.66	130.22

Continued on next page...

Continued from previous page...

Mol	Chain	Res	Type	Atoms	Z	Observed(°)	Ideal(°)
1	B	63	NRP	C2-CA2-N2	-9.96	100.97	108.91
1	B	63	NRP	O2-C2-CA2	-9.93	125.58	130.95
1	A	63	NRP	C2-CA2-N2	-8.89	101.82	108.91
1	C	63	NRP	C2-CA2-N2	-8.57	102.07	108.91
1	C	63	NRP	CG2-CB2-CA2	-8.53	119.15	130.22
1	D	63	NRP	C2-CA2-N2	-7.59	102.86	108.91
1	A	63	NRP	N3-C1-N2	-6.90	105.44	113.26
1	C	63	NRP	N3-C1-N2	-5.83	106.66	113.26
1	B	63	NRP	N3-C1-N2	-4.92	107.69	113.26
1	A	63	NRP	CD4-CG1-CB1	-3.98	94.65	111.31
1	B	63	NRP	CG1-CB1-CA1	-3.69	103.16	112.92
1	B	63	NRP	CD4-CG1-CB1	-3.32	97.42	111.31
1	C	63	NRP	CE1-CD1-CG2	-2.95	117.60	121.29
1	D	63	NRP	CD3-CG1-CB1	-2.35	101.46	111.31
1	D	63	NRP	CE1-CD1-CG2	-2.19	118.55	121.29
1	B	63	NRP	CD3-CG1-CB1	2.21	120.57	111.31
1	C	63	NRP	CG1-CB1-CA1	2.29	118.98	112.92
1	B	63	NRP	CD2-CG2-CD1	2.48	121.43	117.64
1	A	63	NRP	CD3-CG1-CB1	2.57	122.09	111.31
1	C	63	NRP	C-CA3-N3	2.61	118.71	113.00
1	C	63	NRP	CD2-CG2-CD1	2.68	121.74	117.64
1	D	63	NRP	CD2-CG2-CD1	2.88	122.04	117.64
1	D	63	NRP	CD4-CG1-CB1	3.22	124.80	111.31
1	D	63	NRP	C-CA3-N3	3.28	120.18	113.00
1	A	63	NRP	CG1-CB1-CA1	3.32	121.69	112.92
1	B	63	NRP	C-CA3-N3	4.28	122.36	113.00
1	C	63	NRP	CB2-CA2-C2	5.09	129.82	122.36
1	D	63	NRP	CB2-CA2-C2	5.69	130.70	122.36
1	A	63	NRP	CB2-CA2-C2	5.92	131.03	122.36
1	B	63	NRP	CB2-CA2-C2	6.44	131.80	122.36
1	D	63	NRP	CA3-N3-C2	7.55	136.28	123.99
1	A	63	NRP	CA2-C2-N3	15.31	111.07	103.40
1	C	63	NRP	CA2-C2-N3	17.88	112.36	103.40
1	D	63	NRP	CA2-C2-N3	18.13	112.49	103.40
1	B	63	NRP	CA2-C2-N3	18.14	112.49	103.40

There are no chirality outliers.

There are no torsion outliers.

There are no ring outliers.

4 monomers are involved in 28 short contacts:

Mol	Chain	Res	Type	Clashes	Symm-Clashes
1	A	63	NRP	7	0
1	B	63	NRP	7	0
1	C	63	NRP	4	0
1	D	63	NRP	10	0

5.5 Carbohydrates [i](#)

There are no carbohydrates in this entry.

5.6 Ligand geometry [i](#)

Of 13 ligands modelled in this entry, 2 are monoatomic - leaving 11 for Mogul analysis.

In the following table, the Counts columns list the number of bonds (or angles) for which Mogul statistics could be retrieved, the number of bonds (or angles) that are observed in the model and the number of bonds (or angles) that are defined in the chemical component dictionary. The Link column lists molecule types, if any, to which the group is linked. The Z score for a bond length (or angle) is the number of standard deviations the observed value is removed from the expected value. A bond length (or angle) with $|Z| > 2$ is considered an outlier worth inspection. RMSZ is the root-mean-square of all Z scores of the bond lengths (or angles).

Mol	Type	Chain	Res	Link	Bond lengths			Bond angles		
					Counts	RMSZ	$\# Z > 2$	Counts	RMSZ	$\# Z > 2$
2	DTT	A	501	-	2,2,7	0.75	0	0,1,8	0.00	-
3	GOL	A	503	-	5,5,5	0.40	0	5,5,5	0.15	0
3	GOL	A	504	-	5,5,5	0.41	0	5,5,5	0.20	0
3	GOL	A	505	-	5,5,5	0.46	0	5,5,5	0.31	0
3	GOL	A	507	-	5,5,5	0.37	0	5,5,5	0.52	0
2	DTT	B	501	-	2,2,7	0.65	0	0,1,8	0.00	-
3	GOL	B	506	-	5,5,5	0.50	0	5,5,5	0.26	0
2	DTT	C	501	-	2,2,7	0.52	0	0,1,8	0.00	-
3	GOL	C	502	-	5,5,5	0.39	0	5,5,5	0.16	0
2	DTT	D	501	-	2,2,7	0.70	0	0,1,8	0.00	-
3	GOL	D	503	-	5,5,5	0.40	0	5,5,5	0.13	0

In the following table, the Chirals column lists the number of chiral outliers, the number of chiral centers analysed, the number of these observed in the model and the number defined in the chemical component dictionary. Similar counts are reported in the Torsion and Rings columns. '-' means no outliers of that kind were identified.

Mol	Type	Chain	Res	Link	Chirals	Torsions	Rings
2	DTT	A	501	-	-	0/0/0/8	0/0/0/0
3	GOL	A	503	-	-	0/4/4/4	0/0/0/0

Continued on next page...

Continued from previous page...

Mol	Type	Chain	Res	Link	Chirals	Torsions	Rings
3	GOL	A	504	-	-	0/4/4/4	0/0/0/0
3	GOL	A	505	-	-	0/4/4/4	0/0/0/0
3	GOL	A	507	-	-	0/4/4/4	0/0/0/0
2	DTT	B	501	-	-	0/0/0/8	0/0/0/0
3	GOL	B	506	-	-	0/4/4/4	0/0/0/0
2	DTT	C	501	-	-	0/0/0/8	0/0/0/0
3	GOL	C	502	-	-	0/4/4/4	0/0/0/0
2	DTT	D	501	-	-	0/0/0/8	0/0/0/0
3	GOL	D	503	-	-	0/4/4/4	0/0/0/0

There are no bond length outliers.

There are no bond angle outliers.

There are no chirality outliers.

There are no torsion outliers.

There are no ring outliers.

7 monomers are involved in 9 short contacts:

Mol	Chain	Res	Type	Clashes	Symm-Clashes
2	A	501	DTT	1	0
2	B	501	DTT	1	0
3	B	506	GOL	2	0
2	C	501	DTT	2	0
3	C	502	GOL	1	0
2	D	501	DTT	1	0
3	D	503	GOL	1	0

5.7 Other polymers [i](#)

There are no such residues in this entry.

5.8 Polymer linkage issues [i](#)

There are no chain breaks in this entry.

6 Fit of model and data ⓘ

6.1 Protein, DNA and RNA chains ⓘ

In the following table, the column labelled ‘#RSRZ> 2’ contains the number (and percentage) of RSRZ outliers, followed by percent RSRZ outliers for the chain as percentile scores relative to all X-ray entries and entries of similar resolution. The OWAB column contains the minimum, median, 95th percentile and maximum values of the occupancy-weighted average B-factor per residue. The column labelled ‘Q< 0.9’ lists the number of (and percentage) of residues with an average occupancy less than 0.9.

Mol	Chain	Analysed	<RSRZ>	#RSRZ>2	OWAB(Å ²)	Q<0.9
1	A	225/232 (96%)	-0.35	5 (2%) 65 64	3, 10, 24, 45	1 (0%)
1	B	227/232 (97%)	-0.30	6 (2%) 59 58	4, 12, 29, 43	1 (0%)
1	C	226/232 (97%)	-0.28	7 (3%) 52 51	5, 14, 28, 39	1 (0%)
1	D	224/232 (96%)	0.21	15 (6%) 21 20	7, 20, 36, 46	1 (0%)
All	All	902/928 (97%)	-0.18	33 (3%) 45 44	3, 14, 32, 46	4 (0%)

All (33) RSRZ outliers are listed below:

Mol	Chain	Res	Type	RSRZ
1	A	1	SER	5.2
1	D	185	LYS	5.2
1	D	112	ASP	4.8
1	D	152	GLY	4.3
1	D	151	ASP	3.9
1	D	228	LEU	3.7
1	B	207	ASN	3.6
1	D	3	GLU	3.4
1	D	186	ASN	3.3
1	B	229	GLY	3.3
1	C	0	MET	3.1
1	D	184	ALA	2.9
1	D	14	TYR	2.9
1	B	152	GLY	2.8
1	B	151	ASP	2.8
1	D	206	ASN	2.7
1	A	112	ASP	2.7
1	D	85	PRO	2.6
1	D	183	PRO	2.6
1	D	203	LYS	2.6
1	C	152	GLY	2.5

Continued on next page...

Continued from previous page...

Mol	Chain	Res	Type	RSRZ
1	D	47	GLU	2.5
1	D	46	VAL	2.5
1	C	206	ASN	2.4
1	B	0	MET	2.4
1	A	3	GLU	2.3
1	C	129	ASN	2.3
1	B	3	GLU	2.3
1	C	207	ASN	2.3
1	C	2	GLU	2.2
1	A	0	MET	2.2
1	C	112	ASP	2.1
1	A	185	LYS	2.0

6.2 Non-standard residues in protein, DNA, RNA chains [i](#)

In the following table, the Atoms column lists the number of modelled atoms in the group and the number defined in the chemical component dictionary. LLDF column lists the quality of electron density of the group with respect to its neighbouring residues in protein, DNA or RNA chains. The B-factors column lists the minimum, median, 95th percentile and maximum values of B factors of atoms in the group. The column labelled 'Q< 0.9' lists the number of atoms with occupancy less than 0.9.

Mol	Type	Chain	Res	Atoms	RSCC	RSR	LLDF	B-factors(Å ²)	Q<0.9
1	NRP	A	63	23/24	0.83	0.19	-	31,33,34,35	0
1	NRP	D	63	23/24	0.83	0.18	-	43,44,44,45	0
1	NRP	B	63	23/24	0.83	0.19	-	34,35,37,37	0
1	NRP	C	63	23/24	0.88	0.17	-	32,33,35,35	0

6.3 Carbohydrates [i](#)

There are no carbohydrates in this entry.

6.4 Ligands [i](#)

In the following table, the Atoms column lists the number of modelled atoms in the group and the number defined in the chemical component dictionary. LLDF column lists the quality of electron density of the group with respect to its neighbouring residues in protein, DNA or RNA chains. The B-factors column lists the minimum, median, 95th percentile and maximum values of B factors of atoms in the group. The column labelled 'Q< 0.9' lists the number of atoms with occupancy less than 0.9.

Mol	Type	Chain	Res	Atoms	RSCC	RSR	LLDF	B-factors(\AA^2)	Q<0.9
2	DTT	B	501	3/8	0.88	0.21	10.01	16,16,17,18	0
2	DTT	C	501	3/8	0.86	0.18	6.58	16,16,18,19	0
2	DTT	A	501	3/8	0.81	0.24	4.17	11,11,17,18	0
2	DTT	D	501	3/8	0.89	0.21	2.37	15,15,16,17	0
3	GOL	A	505	6/6	0.80	0.20	0.90	31,31,33,33	0
3	GOL	B	506	6/6	0.88	0.14	0.64	36,36,38,38	0
3	GOL	D	503	6/6	0.92	0.18	0.25	23,24,26,26	0
3	GOL	A	507	6/6	0.86	0.17	0.19	26,27,32,32	0
3	GOL	C	502	6/6	0.82	0.14	-0.06	35,35,39,40	0
4	CL	C	509	1/1	0.98	0.04	-4.26	14,14,14,14	0
4	CL	A	508	1/1	1.00	0.03	-5.53	11,11,11,11	0
3	GOL	A	504	6/6	0.88	0.17	-	32,32,46,46	0
3	GOL	A	503	6/6	0.75	0.23	-	39,39,40,40	0

6.5 Other polymers [i](#)

There are no such residues in this entry.