



Full wwPDB X-ray Structure Validation Report ⓘ

Feb 1, 2016 – 06:36 PM GMT

PDB ID : 4M49
Title : Lactate Dehydrogenase A in complex with a substituted pyrazine inhibitor compound 18
Authors : Eigenbrot, C.; Ultsch, M.
Deposited on : 2013-08-06
Resolution : 2.05 Å(reported)

This is a Full wwPDB X-ray Structure Validation Report for a publicly released PDB entry.
We welcome your comments at validation@mail.wwpdb.org
A user guide is available at
<http://wwpdb.org/validation/2016/XrayValidationReportHelp>
with specific help available everywhere you see the ⓘ symbol.

The following versions of software and data (see [references ⓘ](#)) were used in the production of this report:

MolProbity : 4.02b-467
Mogul : 1.7 (RC4), CSD as536be (2015)
Xtriage (Phenix) : 1.9-1692
EDS : rb-20026688
Percentile statistics : 20151230.v01 (using entries in the PDB archive December 30th 2015)
Refmac : 5.8.0135
CCP4 : 6.5.0
Ideal geometry (proteins) : Engh & Huber (2001)
Ideal geometry (DNA, RNA) : Parkinson et al. (1996)
Validation Pipeline (wwPDB-VP) : trunk26865

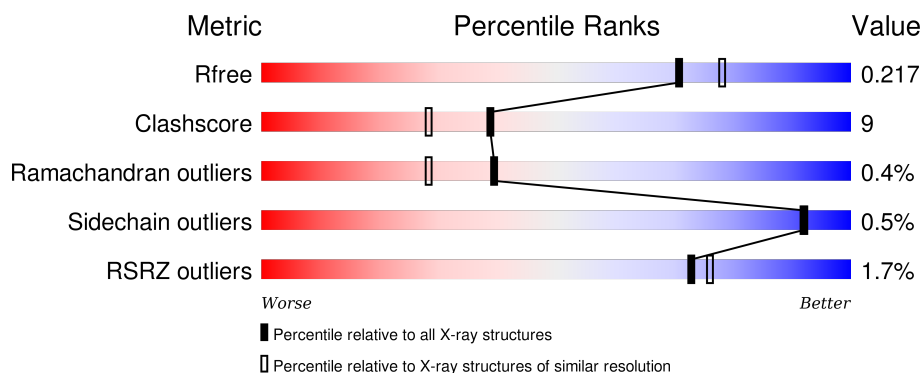
1 Overall quality at a glance ⓘ

The following experimental techniques were used to determine the structure:

X-RAY DIFFRACTION

The reported resolution of this entry is 2.05 Å.

Percentile scores (ranging between 0-100) for global validation metrics of the entry are shown in the following graphic. The table shows the number of entries on which the scores are based.



Metric	Whole archive (#Entries)	Similar resolution (#Entries, resolution range(Å))
R_{free}	91344	1799 (2.08-2.04)
Clashscore	102246	1910 (2.08-2.04)
Ramachandran outliers	100387	1893 (2.08-2.04)
Sidechain outliers	100360	1893 (2.08-2.04)
RSRZ outliers	91569	1802 (2.08-2.04)

The table below summarises the geometric issues observed across the polymeric chains and their fit to the electron density. The red, orange, yellow and green segments on the lower bar indicate the fraction of residues that contain outliers for ≥ 3 , 2, 1 and 0 types of geometric quality criteria. A grey segment represents the fraction of residues that are not modelled. The numeric value for each fraction is indicated below the corresponding segment, with a dot representing fractions $\leq 5\%$. The upper red bar (where present) indicates the fraction of residues that have poor fit to the electron density. The numeric value is given above the bar.

Mol	Chain	Length	Quality of chain
1	A	331	<div> <div>2%</div> <div>85%</div> <div>14%</div> <div>.</div> </div>
1	B	331	<div> <div>%</div> <div>86%</div> <div>14%</div> </div>
1	C	331	<div> <div>2%</div> <div>82%</div> <div>18%</div> </div>
1	D	331	<div> <div>2%</div> <div>88%</div> <div>11%</div> <div>.</div> </div>

The following table lists non-polymeric compounds, carbohydrate monomers and non-standard

residues in protein, DNA, RNA chains that are outliers for geometric or electron-density-fit criteria:

Mol	Type	Chain	Res	Chirality	Geometry	Clashes	Electron density
3	EPE	A	802	-	-	-	X
3	EPE	B	802	-	-	-	X
3	EPE	C	802	-	-	-	X
5	SO4	A	804	-	-	-	X
5	SO4	C	804	-	-	-	X
6	LAC	B	803	-	-	-	X

2 Entry composition [i](#)

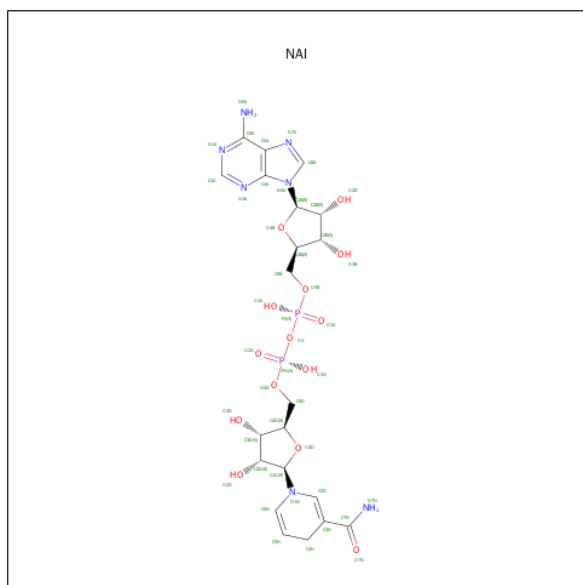
There are 7 unique types of molecules in this entry. The entry contains 11255 atoms, of which 7 are hydrogens and 0 are deuteriums.

In the tables below, the ZeroOcc column contains the number of atoms modelled with zero occupancy, the AltConf column contains the number of residues with at least one atom in alternate conformation and the Trace column contains the number of residues modelled with at most 2 atoms.

- Molecule 1 is a protein called L-lactate dehydrogenase A chain.

Mol	Chain	Residues	Atoms					ZeroOcc	AltConf	Trace
1	A	331	Total	C	N	O	S	0	7	0
			2601	1662	440	484	15			
1	B	331	Total	C	N	O	S	0	10	0
			2632	1691	445	482	14			
1	C	331	Total	C	N	O	S	0	7	0
			2605	1666	443	482	14			
1	D	331	Total	C	N	O	S	0	6	0
			2600	1667	440	478	15			

- Molecule 2 is 1,4-DIHYDRONICOTINAMIDE ADENINE DINUCLEOTIDE (three-letter code: NAI) (formula: C₂₁H₂₉N₇O₁₄P₂).



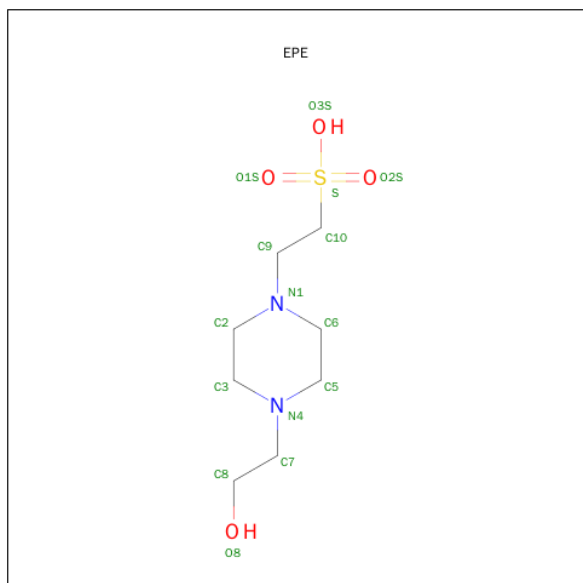
Mol	Chain	Residues	Atoms					ZeroOcc	AltConf
2	A	1	Total	C	N	O	P	0	0
			44	21	7	14	2		
2	B	1	Total	C	N	O	P	0	0
			44	21	7	14	2		

Continued on next page...

Continued from previous page...

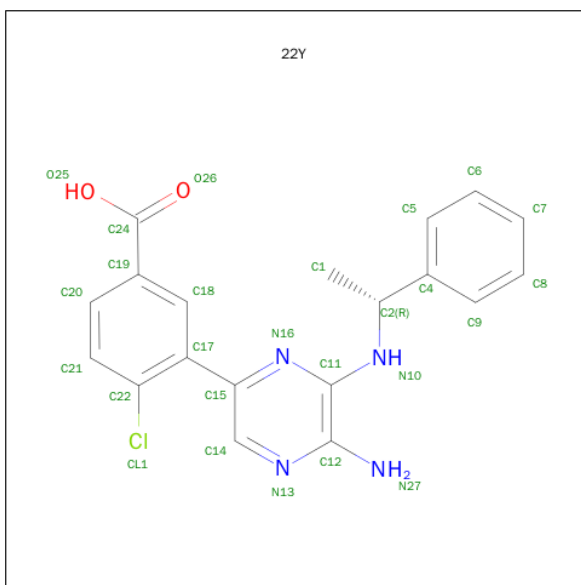
Mol	Chain	Residues	Atoms					ZeroOcc	AltConf
2	C	1	Total	C	N	O	P	0	0
			44	21	7	14	2		
2	D	1	Total	C	N	O	P	0	0
			44	21	7	14	2		

- Molecule 3 is 4-(2-HYDROXYETHYL)-1-PIPERAZINE ETHANESULFONIC ACID (three-letter code: EPE) (formula: C₈H₁₈N₂O₄S).



Mol	Chain	Residues	Atoms					ZeroOcc	AltConf
3	A	1	Total	C	N	O	S	0	0
			15	8	2	4	1		
3	B	1	Total	C	N	O	S	0	0
			15	8	2	4	1		
3	C	1	Total	C	N	O	S	0	0
			15	8	2	4	1		

- Molecule 4 is 3-(5-AMINO-6-[(1R)-1-PHENYLETHYL]AMINO}PYRAZIN-2-YL)-4-CHLOROBENZOIC ACID (three-letter code: 22Y) (formula: C₁₉H₁₇ClN₄O₂).



Mol	Chain	Residues	Atoms						ZeroOcc	AltConf
4	A	1	Total	C	Cl	H	N	O	0	0
			27	19	1	1	4	2		
4	C	1	Total	C	Cl	H	N	O	0	0
			27	19	1	1	4	2		
4	D	1	Total	C	Cl	N	O		0	0
			26	19	1	4	2			

- Molecule 5 is SULFATE ION (three-letter code: SO₄) (formula: O₄S).



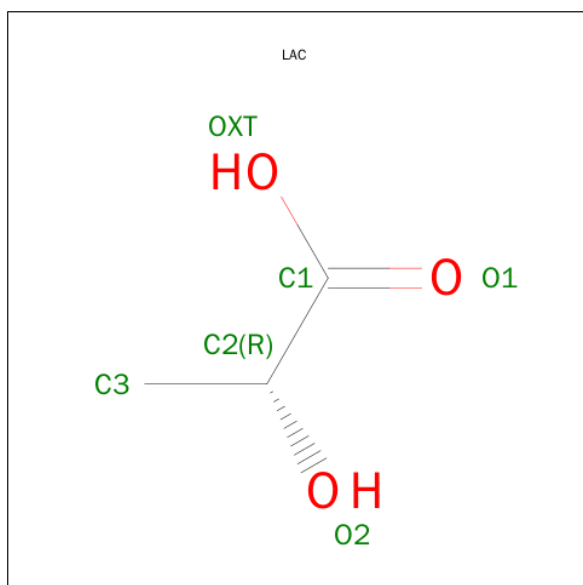
Mol	Chain	Residues	Atoms		ZeroOcc	AltConf
5	A	1	Total	O S	0	0
			5	4 1		

Continued on next page...

Continued from previous page...

Mol	Chain	Residues	Atoms			ZeroOcc	AltConf
5	C	1	Total	O	S	0	0
			5	4	1		
5	D	1	Total	O	S	0	0
			5	4	1		

- Molecule 6 is LACTIC ACID (three-letter code: LAC) (formula: $C_3H_6O_3$).



Mol	Chain	Residues	Atoms				ZeroOcc	AltConf
6	B	1	Total	C	H	O	0	0
			11	3	5	3		

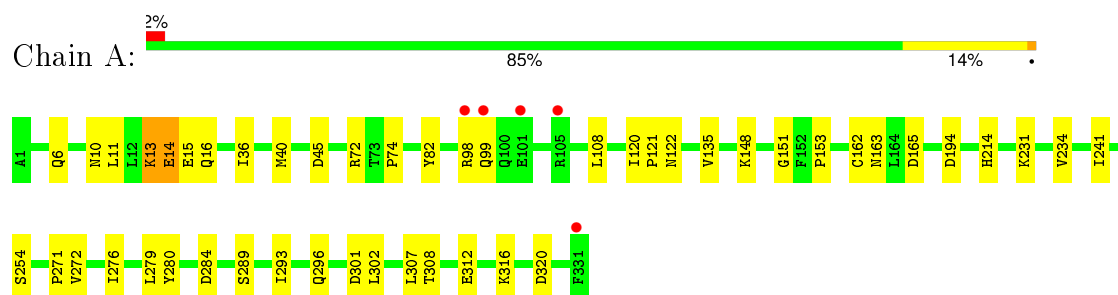
- Molecule 7 is water.

Mol	Chain	Residues	Atoms		ZeroOcc	AltConf
7	A	109	Total	O	0	0
			109	109		
7	B	166	Total	O	0	0
			166	166		
7	C	76	Total	O	0	0
			76	76		
7	D	139	Total	O	0	0
			139	139		

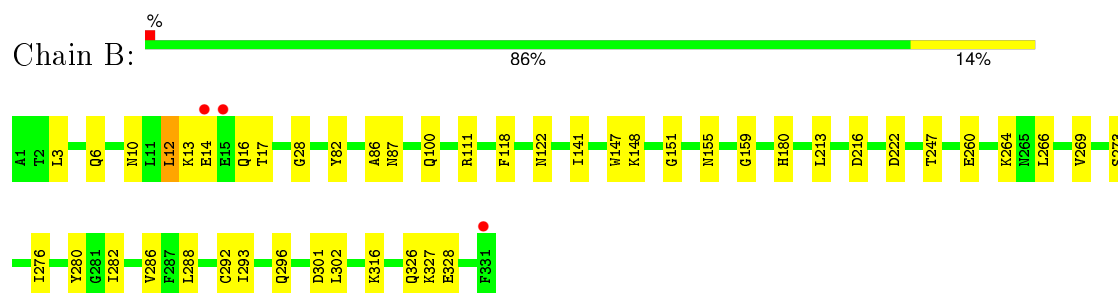
3 Residue-property plots

These plots are drawn for all protein, RNA and DNA chains in the entry. The first graphic for a chain summarises the proportions of errors displayed in the second graphic. The second graphic shows the sequence view annotated by issues in geometry and electron density. Residues are color-coded according to the number of geometric quality criteria for which they contain at least one outlier: green = 0, yellow = 1, orange = 2 and red = 3 or more. A red dot above a residue indicates a poor fit to the electron density ($RSRZ > 2$). Stretches of 2 or more consecutive residues without any outlier are shown as a green connector. Residues present in the sample, but not in the model, are shown in grey.

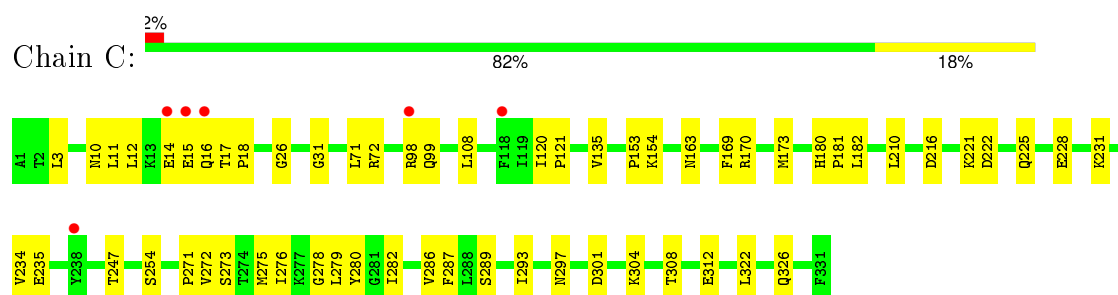
- Molecule 1: L-lactate dehydrogenase A chain



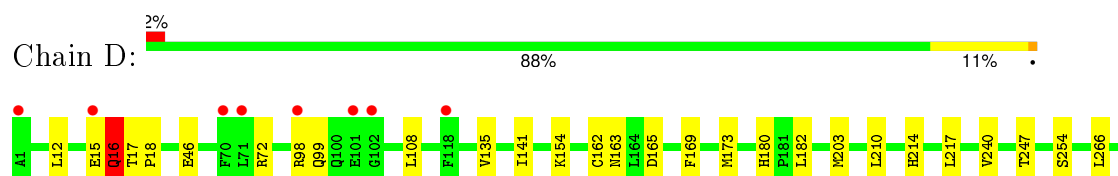
- Molecule 1: L-lactate dehydrogenase A chain



- Molecule 1: L-lactate dehydrogenase A chain



- Molecule 1: L-lactate dehydrogenase A chain





4 Data and refinement statistics

Property	Value	Source
Space group	C 1 2 1	Depositor
Cell constants a, b, c, α , β , γ	168.38Å 81.82Å 120.67Å 90.00° 117.65° 90.00°	Depositor
Resolution (Å)	41.74 – 2.05 41.74 – 2.05	Depositor EDS
% Data completeness (in resolution range)	99.5 (41.74-2.05) 99.5 (41.74-2.05)	Depositor EDS
R_{merge}	0.06	Depositor
R_{sym}	(Not available)	Depositor
$\langle I/\sigma(I) \rangle$ ¹	3.35 (at 2.05Å)	Xtriage
Refinement program	PHENIX (phenix.refine: 1.7.3_928)	Depositor
R, R_{free}	0.171 , 0.224 0.170 , 0.217	Depositor DCC
R_{free} test set	545 reflections (0.61%)	DCC
Wilson B-factor (Å ²)	35.2	Xtriage
Anisotropy	0.716	Xtriage
Bulk solvent k_{sol} (e/Å ³), B_{sol} (Å ²)	0.30 , 46.7	EDS
Estimated twinning fraction	No twinning to report.	Xtriage
L-test for twinning ²	$\langle L \rangle = 0.51$, $\langle L^2 \rangle = 0.34$	Xtriage
Outliers	0 of 90472 reflections	Xtriage
F_o, F_c correlation	0.97	EDS
Total number of atoms	11255	wwPDB-VP
Average B, all atoms (Å ²)	49.0	wwPDB-VP

Xtriage's analysis on translational NCS is as follows: *The largest off-origin peak in the Patterson function is 4.12% of the height of the origin peak. No significant pseudotranslation is detected.*

¹Intensities estimated from amplitudes.

²Theoretical values of $\langle |L| \rangle$, $\langle L^2 \rangle$ for acentric reflections are 0.5, 0.375 respectively for untwinned datasets, and 0.333, 0.2 for perfectly twinned datasets.

5 Model quality [i](#)

5.1 Standard geometry [i](#)

Bond lengths and bond angles in the following residue types are not validated in this section: EPE, NAI, SO4, 22Y, LAC

The Z score for a bond length (or angle) is the number of standard deviations the observed value is removed from the expected value. A bond length (or angle) with $|Z| > 5$ is considered an outlier worth inspection. RMSZ is the root-mean-square of all Z scores of the bond lengths (or angles).

Mol	Chain	Bond lengths		Bond angles	
		RMSZ	$\# Z > 5$	RMSZ	$\# Z > 5$
1	A	0.33	0/2666	0.47	0/3603
1	B	0.37	0/2708	0.51	0/3660
1	C	0.30	0/2670	0.46	0/3608
1	D	0.36	0/2663	0.49	0/3598
All	All	0.34	0/10707	0.48	0/14469

There are no bond length outliers.

There are no bond angle outliers.

There are no chirality outliers.

There are no planarity outliers.

5.2 Too-close contacts [i](#)

In the following table, the Non-H and H(model) columns list the number of non-hydrogen atoms and hydrogen atoms in the chain respectively. The H(added) column lists the number of hydrogen atoms added and optimized by MolProbity. The Clashes column lists the number of clashes within the asymmetric unit, whereas Symm-Clashes lists symmetry related clashes.

Mol	Chain	Non-H	H(model)	H(added)	Clashes	Symm-Clashes
1	A	2601	0	2702	45	0
1	B	2632	0	2752	50	0
1	C	2605	0	2715	70	0
1	D	2600	0	2712	54	0
2	A	44	0	26	1	0
2	B	44	0	26	4	0
2	C	44	0	26	1	0
2	D	44	0	26	3	0
3	A	15	0	17	2	0

Continued on next page...

Continued from previous page...

Mol	Chain	Non-H	H(model)	H(added)	Clashes	Symm-Clashes
3	B	15	0	17	1	0
3	C	15	0	17	6	0
4	A	26	1	16	2	0
4	C	26	1	16	4	0
4	D	26	0	16	0	0
5	A	5	0	0	0	0
5	C	5	0	0	0	0
5	D	5	0	0	0	0
6	B	6	5	5	2	0
7	A	109	0	0	2	0
7	B	166	0	0	2	0
7	C	76	0	0	0	0
7	D	139	0	0	3	0
All	All	11248	7	11089	196	0

The all-atom clashscore is defined as the number of clashes found per 1000 atoms (including hydrogen atoms). The all-atom clashscore for this structure is 9.

All (196) close contacts within the same asymmetric unit are listed below, sorted by their clash magnitude.

Atom-1	Atom-2	Interatomic distance (Å)	Clash overlap (Å)
1:A:14:GLU:HB3	1:A:15:GLU:CA	1.66	1.24
1:D:154[B]:LYS:CE	1:D:275:MET:HE3	1.76	1.14
1:C:276:ILE:HD11	1:C:286[B]:VAL:HG23	1.19	1.11
1:B:302:LEU:HD13	1:C:11:LEU:HD11	1.34	1.09
1:A:14:GLU:HB3	1:A:15:GLU:HA	1.07	1.06
1:A:14:GLU:CB	1:A:15:GLU:HA	1.87	1.03
1:D:154[B]:LYS:HE2	1:D:275:MET:HE3	1.00	1.00
1:C:247:THR:HG22	4:C:803:22Y:N13	1.77	0.99
1:C:154[B]:LYS:HG3	3:C:802:EPE:O2S	1.65	0.96
1:D:154[B]:LYS:HE2	1:D:275:MET:CE	1.97	0.92
1:C:98:ARG:HG2	4:C:803:22Y:H3	1.52	0.92
1:A:14:GLU:HB3	1:A:15:GLU:CB	2.02	0.89
1:D:203[A]:MET:CE	1:D:217:LEU:HD21	2.02	0.88
1:A:16:GLN:HB2	1:D:296:GLN:NE2	1.92	0.85
1:B:280:TYR:O	1:B:316:LYS:HE2	1.78	0.83
1:C:276:ILE:CD1	1:C:286[B]:VAL:HG23	2.08	0.82
1:C:71:LEU:O	1:C:72[B]:ARG:HD3	1.82	0.80
1:B:13:LYS:HE2	1:B:13:LYS:HA	1.65	0.78
1:D:280:TYR:O	7:D:1032:HOH:O	2.04	0.76
1:A:276:ILE:CD1	1:A:279:LEU:HD12	2.17	0.75

Continued on next page...

Continued from previous page...

Atom-1	Atom-2	Interatomic distance (Å)	Clash overlap (Å)
1:D:15:GLU:HG3	1:D:16:GLN:H	1.51	0.75
1:A:6[B]:GLN:CD	1:B:213[B]:LEU:HG	2.08	0.74
1:A:14:GLU:CB	1:A:15:GLU:CA	2.51	0.74
1:A:153:PRO:HA	3:A:802:EPE:H92	1.69	0.74
1:B:302:LEU:CD1	1:C:11:LEU:HD11	2.13	0.73
1:C:182:LEU:HD11	1:D:72:ARG:NH2	2.03	0.73
1:D:203[A]:MET:HE2	1:D:217:LEU:HD21	1.69	0.72
1:B:10:ASN:ND2	1:B:13:LYS:HE3	2.05	0.70
1:D:154[B]:LYS:CE	1:D:275:MET:CE	2.64	0.70
1:A:163:ASN:ND2	1:A:254[B]:SER:OG	2.23	0.70
1:D:15:GLU:HG3	1:D:16:GLN:N	2.07	0.70
1:B:12:LEU:O	1:B:12:LEU:HD12	1.91	0.70
1:A:98:ARG:HB3	4:A:803:22Y:H3	1.72	0.69
2:B:801:NAI:C5N	6:B:803:LAC:H32	2.21	0.69
1:C:15:GLU:HG2	1:C:16:GLN:H	1.57	0.69
1:B:286:VAL:HA	1:B:326:GLN:HE22	1.58	0.69
1:A:36:ILE:O	1:A:40[A]:MET:HG2	1.92	0.68
1:A:276:ILE:HD11	1:A:279:LEU:HD12	1.75	0.67
1:A:194:ASP:O	7:A:927:HOH:O	2.13	0.67
1:D:203[A]:MET:HG2	1:D:210:LEU:HD22	1.77	0.67
1:B:288:LEU:C	1:B:288:LEU:HD12	2.15	0.67
1:D:279:LEU:O	1:D:281:GLY:N	2.28	0.67
1:C:231:LYS:HE2	1:C:235:GLU:OE1	1.95	0.66
1:D:141:ILE:HG12	1:D:322:LEU:HD22	1.79	0.65
1:D:154[B]:LYS:NZ	1:D:275:MET:CE	2.60	0.64
1:D:98:ARG:HH21	2:D:801:NAI:PA	2.19	0.64
1:D:281:GLY:HA3	7:D:1032:HOH:O	1.97	0.64
1:A:6[B]:GLN:HG2	1:B:213[B]:LEU:HD11	1.79	0.64
1:C:98:ARG:CG	4:C:803:22Y:H3	2.28	0.63
1:A:14:GLU:HB3	1:A:15:GLU:HB2	1.82	0.62
1:B:10:ASN:HD21	1:B:13:LYS:HE3	1.65	0.62
1:C:98:ARG:HG2	4:C:803:22Y:C1	2.26	0.62
1:C:276:ILE:HD11	1:C:286[B]:VAL:CG2	2.12	0.62
1:C:120:ILE:HB	1:C:121:PRO:HD3	1.82	0.61
1:C:280:TYR:HB3	1:C:312[A]:GLU:HG3	1.83	0.61
1:C:231:LYS:HE2	1:C:235:GLU:CD	2.21	0.61
1:B:159:GLY:HA3	1:B:273:SER:HB2	1.83	0.61
1:A:11:LEU:HD23	1:D:154[A]:LYS:HG3	1.82	0.61
1:C:72[B]:ARG:CZ	1:D:182:LEU:HD11	2.31	0.61
1:B:155:ASN:ND2	1:C:12:LEU:HD11	2.15	0.60
1:D:154[B]:LYS:NZ	1:D:275:MET:HE3	2.16	0.60

Continued on next page...

Continued from previous page...

Atom-1	Atom-2	Interatomic distance (Å)	Clash overlap (Å)
1:B:293:ILE:HD12	1:B:301:ASP:HB2	1.83	0.59
1:C:108:LEU:HD13	1:C:108:LEU:C	2.23	0.59
1:B:151:GLY:O	3:B:802:EPE:H72	2.03	0.59
1:A:162:CYS:HA	1:A:165:ASP:OD2	2.03	0.59
1:D:163:ASN:HD22	1:D:271:PRO:HD2	1.68	0.58
1:B:276:ILE:HD13	1:B:282:ILE:HD13	1.85	0.58
1:B:276:ILE:HD13	1:B:282:ILE:CD1	2.34	0.58
1:A:163:ASN:HA	1:A:271:PRO:HG2	1.86	0.57
1:B:12:LEU:HD11	1:C:297:ASN:ND2	2.19	0.57
1:A:241:ILE:HD13	4:A:803:22Y:CL1	2.41	0.57
1:C:153:PRO:HA	3:C:802:EPE:C9	2.35	0.57
1:C:180:HIS:ND1	1:C:181:PRO:HD2	2.20	0.57
1:A:276:ILE:HD12	1:A:279:LEU:HD12	1.87	0.57
1:D:279:LEU:C	1:D:281:GLY:H	2.07	0.56
1:D:203[A]:MET:SD	1:D:210:LEU:HD22	2.45	0.56
1:C:182:LEU:HD11	1:D:72:ARG:CZ	2.36	0.56
1:D:293[A]:ILE:HD12	1:D:301:ASP:HB2	1.87	0.56
1:D:141:ILE:CG1	1:D:322:LEU:HD22	2.35	0.55
1:C:163:ASN:HA	1:C:271:PRO:HG2	1.88	0.55
1:C:293:ILE:HD12	1:C:301:ASP:HB2	1.89	0.55
1:C:322:LEU:O	1:C:326:GLN:HG3	2.06	0.55
1:A:120:ILE:HB	1:A:121:PRO:HD3	1.87	0.55
1:D:154[B]:LYS:NZ	1:D:275:MET:HE1	2.22	0.54
1:C:98:ARG:HH11	1:C:98:ARG:HB2	1.71	0.54
1:B:276:ILE:CD1	1:B:282:ILE:HD13	2.37	0.54
1:B:12:LEU:HD11	1:C:297:ASN:HD21	1.72	0.54
1:B:16:GLN:HG3	1:B:17:THR:H	1.72	0.53
1:B:100:GLN:OE1	1:B:100:GLN:HA	2.08	0.53
1:A:302:LEU:C	1:A:302:LEU:HD12	2.28	0.53
1:B:6:GLN:O	1:C:304:LYS:HE3	2.09	0.53
1:C:153:PRO:HA	3:C:802:EPE:H92	1.91	0.52
1:C:154[B]:LYS:HE3	3:C:802:EPE:O1S	2.10	0.52
1:B:327:LYS:HE3	1:B:328:GLU:OE2	2.09	0.52
1:A:14:GLU:CB	1:A:15:GLU:HB2	2.39	0.51
1:C:154[B]:LYS:CG	3:C:802:EPE:O2S	2.50	0.51
1:D:169:PHE:CE2	1:D:173[B]:MET:SD	3.03	0.51
1:D:203[A]:MET:CG	1:D:210:LEU:HD22	2.39	0.51
1:D:15:GLU:OE2	1:D:17:THR:HG22	2.09	0.51
1:B:276:ILE:HD11	1:B:286:VAL:HG13	1.93	0.51
1:B:276:ILE:CD1	1:B:282:ILE:HG21	2.40	0.51
1:B:13:LYS:CE	1:B:13:LYS:HA	2.36	0.51

Continued on next page...

Continued from previous page...

Atom-1	Atom-2	Interatomic distance (Å)	Clash overlap (Å)
1:D:279:LEU:C	1:D:281:GLY:N	2.64	0.51
1:C:173[A]:MET:CE	1:C:210:LEU:HD11	2.41	0.51
1:B:111[B]:ARG:HG3	7:B:1062:HOH:O	2.11	0.51
1:C:98:ARG:NH1	1:C:98:ARG:HB2	2.26	0.51
1:A:10:ASN:OD1	1:A:13:LYS:HE3	2.11	0.50
1:C:278:GLY:O	1:C:279:LEU:HD12	2.11	0.50
1:B:141[B]:ILE:CD1	1:B:326:GLN:HG3	2.42	0.50
1:A:293:ILE:HD12	1:A:301:ASP:HB2	1.93	0.50
1:C:169:PHE:O	1:C:173[B]:MET:HG3	2.12	0.49
1:C:17:THR:HG23	1:C:18:PRO:HD2	1.94	0.49
1:D:169:PHE:HE2	1:D:173[B]:MET:SD	2.36	0.49
1:A:316:LYS:HE2	1:A:320:ASP:OD2	2.13	0.48
1:D:277:LYS:HD2	1:D:285:ASP:OD1	2.13	0.48
1:C:71:LEU:C	1:C:72[B]:ARG:HD3	2.33	0.48
1:B:276:ILE:C	1:B:276:ILE:HD12	2.33	0.48
1:C:222:ASP:O	1:C:225:GLN:NE2	2.47	0.48
1:B:276:ILE:HD11	1:B:286:VAL:CG1	2.44	0.47
1:D:163:ASN:OD1	1:D:254[B]:SER:OG	2.33	0.47
1:A:99:GLN:CD	1:A:108:LEU:HD22	2.34	0.47
1:D:169:PHE:CZ	1:D:203[B]:MET:SD	3.08	0.47
1:B:302:LEU:HD13	1:C:11:LEU:CD1	2.25	0.47
1:A:296:GLN:NE2	1:D:16:GLN:HA	2.30	0.47
1:C:163:ASN:OD1	1:C:254[B]:SER:OG	2.32	0.47
1:B:86:ALA:O	1:B:87:ASN:HB2	2.15	0.47
1:C:72[B]:ARG:NH1	1:D:182:LEU:HD11	2.30	0.47
1:D:240:VAL:CG1	1:D:247:THR:HG22	2.45	0.47
1:D:203[A]:MET:HE1	1:D:217:LEU:HD21	1.95	0.47
1:C:17:THR:HG22	1:C:18:PRO:O	2.15	0.47
1:C:308:THR:O	1:C:312[B]:GLU:HG3	2.15	0.46
1:C:278:GLY:C	1:C:279:LEU:HD12	2.35	0.46
1:B:288:LEU:C	1:B:288:LEU:CD1	2.83	0.46
1:C:216:ASP:HB3	1:C:222:ASP:HA	1.98	0.46
1:D:281:GLY:CA	7:D:1032:HOH:O	2.61	0.46
1:C:26:GLY:O	1:C:31:GLY:HA3	2.15	0.46
1:D:15:GLU:CG	1:D:16:GLN:H	2.14	0.45
1:A:284:ASP:HA	7:A:923:HOH:O	2.17	0.45
1:B:155:ASN:CG	1:C:12:LEU:HD11	2.37	0.45
1:A:99:GLN:HB2	1:A:108:LEU:HD22	1.98	0.45
1:C:231:LYS:O	1:C:234:VAL:CG1	2.64	0.45
1:D:18:PRO:HG3	1:D:46:GLU:OE1	2.16	0.45
1:A:135:VAL:O	2:A:801:NAI:H2N	2.17	0.45

Continued on next page...

Continued from previous page...

Atom-1	Atom-2	Interatomic distance (Å)	Clash overlap (Å)
1:A:148:LYS:HD2	1:A:148:LYS:HA	1.66	0.45
1:D:293[B]:ILE:HD13	1:D:301:ASP:HB2	1.98	0.45
1:A:82:TYR:CG	1:A:122:ASN:HB3	2.52	0.45
1:B:266:LEU:O	1:D:180:HIS:HB2	2.17	0.45
1:C:273:SER:OG	1:C:287:PHE:HB3	2.17	0.45
1:C:276:ILE:HD13	1:C:282:ILE:HG21	1.99	0.45
1:C:286[A]:VAL:HG12	1:C:287:PHE:N	2.32	0.44
1:C:153:PRO:HA	3:C:802:EPE:H91	1.98	0.44
1:A:214:HIS:HB2	1:B:3:LEU:HD13	1.99	0.44
1:D:169:PHE:HZ	1:D:203[B]:MET:SD	2.41	0.44
1:C:173[A]:MET:HE1	1:C:210:LEU:HD11	1.99	0.44
1:B:147:TRP:CZ3	1:B:148:LYS:HD3	2.52	0.44
1:B:118[A]:PHE:HE2	7:B:921:HOH:O	1.99	0.44
1:B:180:HIS:HB2	1:D:266:LEU:O	2.18	0.43
2:B:801:NAI:H42N	6:B:803:LAC:C1	2.48	0.43
1:B:216:ASP:O	1:B:222:ASP:HB2	2.18	0.43
1:B:260:GLU:HG3	1:B:264:LYS:HE3	2.01	0.43
1:B:288:LEU:O	1:B:288:LEU:HD12	2.18	0.43
1:D:98:ARG:NH2	2:D:801:NAI:O2A	2.50	0.43
1:C:154[B]:LYS:CE	1:C:275:MET:HG2	2.49	0.43
1:D:135:VAL:O	2:D:801:NAI:H2N	2.19	0.43
1:C:272:VAL:O	1:C:289:SER:HA	2.17	0.43
1:A:280:TYR:CE1	1:A:307:LEU:HD12	2.53	0.43
1:A:16:GLN:HB2	1:D:296:GLN:HE22	1.81	0.43
1:C:154[B]:LYS:HE2	1:C:275:MET:HG2	2.00	0.43
1:C:15:GLU:HG2	1:C:16:GLN:N	2.31	0.43
1:C:170:ARG:HA	1:C:173[B]:MET:HE2	2.00	0.42
1:B:28:GLY:HA3	2:B:801:NAI:O5B	2.20	0.42
1:B:82:TYR:CG	1:B:122:ASN:HB3	2.54	0.42
1:D:162:CYS:HA	1:D:165:ASP:OD2	2.19	0.42
1:D:169:PHE:O	1:D:173[B]:MET:HG3	2.20	0.42
1:D:99:GLN:HB2	1:D:108:LEU:HD22	2.02	0.42
1:A:272:VAL:O	1:A:289:SER:HA	2.20	0.42
1:C:3:LEU:HD13	1:D:214:HIS:HB2	2.02	0.42
1:A:151:GLY:O	3:A:802:EPE:H51	2.20	0.41
1:B:301:ASP:OD1	1:C:10:ASN:HA	2.20	0.41
1:B:269:VAL:HA	1:B:292:CYS:O	2.20	0.41
1:B:247:THR:OG1	2:B:801:NAI:H5N	2.20	0.41
1:C:228:GLU:O	1:C:231:LYS:HB3	2.20	0.41
1:B:296:GLN:NE2	1:C:16:GLN:HB3	2.36	0.41
1:C:99:GLN:HA	1:C:108:LEU:HD23	2.03	0.41

Continued on next page...

Continued from previous page...

Atom-1	Atom-2	Interatomic distance (Å)	Clash overlap (Å)
1:C:180:HIS:CE1	1:C:181:PRO:HD2	2.56	0.41
1:B:12:LEU:HD12	1:B:12:LEU:C	2.40	0.41
1:A:45:ASP:O	1:A:74:PRO:HD2	2.21	0.41
1:C:276:ILE:C	1:C:276:ILE:HD12	2.41	0.41
1:C:15:GLU:CG	1:C:16:GLN:H	2.31	0.41
1:C:221:LYS:H	1:C:221:LYS:HG2	1.73	0.41
1:C:135:VAL:O	2:C:801:NAI:H2N	2.21	0.41
1:A:14:GLU:HG3	1:D:297:ASN:ND2	2.36	0.40
1:A:13:LYS:HA	1:A:13:LYS:HD3	1.94	0.40
1:A:276:ILE:O	1:A:276:ILE:HG13	2.22	0.40
1:A:308:THR:O	1:A:312[A]:GLU:HG3	2.22	0.40
1:A:231:LYS:O	1:A:234:VAL:HG22	2.21	0.40

There are no symmetry-related clashes.

5.3 Torsion angles ⓘ

5.3.1 Protein backbone ⓘ

In the following table, the Percentiles column shows the percent Ramachandran outliers of the chain as a percentile score with respect to all X-ray entries followed by that with respect to entries of similar resolution.

The Analysed column shows the number of residues for which the backbone conformation was analysed, and the total number of residues.

Mol	Chain	Analysed	Favoured	Allowed	Outliers	Percentiles	
1	A	336/331 (102%)	326 (97%)	9 (3%)	1 (0%)	46	36
1	B	339/331 (102%)	325 (96%)	13 (4%)	1 (0%)	46	36
1	C	336/331 (102%)	329 (98%)	6 (2%)	1 (0%)	46	36
1	D	335/331 (101%)	325 (97%)	8 (2%)	2 (1%)	30	17
All	All	1346/1324 (102%)	1305 (97%)	36 (3%)	5 (0%)	39	28

All (5) Ramachandran outliers are listed below:

Mol	Chain	Res	Type
1	D	280	TYR
1	B	14	GLU
1	D	16	GLN

Continued on next page...

Continued from previous page...

Mol	Chain	Res	Type
1	A	14	GLU
1	C	14	GLU

5.3.2 Protein sidechains ⓘ

In the following table, the Percentiles column shows the percent sidechain outliers of the chain as a percentile score with respect to all X-ray entries followed by that with respect to entries of similar resolution.

The Analysed column shows the number of residues for which the sidechain conformation was analysed, and the total number of residues.

Mol	Chain	Analysed	Rotameric	Outliers	Percentiles	
1	A	294/287 (102%)	292 (99%)	2 (1%)	88	88
1	B	297/287 (104%)	296 (100%)	1 (0%)	94	95
1	C	294/287 (102%)	294 (100%)	0	100	100
1	D	293/287 (102%)	290 (99%)	3 (1%)	82	81
All	All	1178/1148 (103%)	1172 (100%)	6 (0%)	92	92

All (6) residues with a non-rotameric sidechain are listed below:

Mol	Chain	Res	Type
1	A	13	LYS
1	A	72	ARG
1	B	12	LEU
1	D	12	LEU
1	D	16	GLN
1	D	275	MET

Some sidechains can be flipped to improve hydrogen bonding and reduce clashes. All (5) such sidechains are listed below:

Mol	Chain	Res	Type
1	A	163	ASN
1	A	296	GLN
1	B	326	GLN
1	D	16	GLN
1	D	296	GLN

5.3.3 RNA ⓘ

There are no RNA molecules in this entry.

5.4 Non-standard residues in protein, DNA, RNA chains ⓘ

There are no non-standard protein/DNA/RNA residues in this entry.

5.5 Carbohydrates ⓘ

There are no carbohydrates in this entry.

5.6 Ligand geometry ⓘ

14 ligands are modelled in this entry.

In the following table, the Counts columns list the number of bonds (or angles) for which Mogul statistics could be retrieved, the number of bonds (or angles) that are observed in the model and the number of bonds (or angles) that are defined in the chemical component dictionary. The Link column lists molecule types, if any, to which the group is linked. The Z score for a bond length (or angle) is the number of standard deviations the observed value is removed from the expected value. A bond length (or angle) with $|Z| > 2$ is considered an outlier worth inspection. RMSZ is the root-mean-square of all Z scores of the bond lengths (or angles).

Mol	Type	Chain	Res	Link	Bond lengths			Bond angles		
					Counts	RMSZ	$\# Z > 2$	Counts	RMSZ	$\# Z > 2$
2	NAI	A	801	-	38,48,48	1.91	8 (21%)	48,73,73	2.12	8 (16%)
3	EPE	A	802	-	14,15,15	0.36	0	18,20,20	1.83	4 (22%)
4	22Y	A	803	-	25,28,28	0.99	3 (12%)	32,39,39	1.07	1 (3%)
5	SO4	A	804	-	4,4,4	0.14	0	6,6,6	0.24	0
2	NAI	B	801	-	38,48,48	1.86	11 (28%)	48,73,73	2.05	10 (20%)
3	EPE	B	802	-	14,15,15	0.53	0	18,20,20	2.02	6 (33%)
6	LAC	B	803	-	2,5,5	0.77	0	1,6,6	0.79	0
2	NAI	C	801	-	38,48,48	1.95	11 (28%)	48,73,73	2.06	10 (20%)
3	EPE	C	802	-	14,15,15	0.37	0	18,20,20	2.02	5 (27%)
4	22Y	C	803	-	25,28,28	0.92	3 (12%)	32,39,39	1.06	2 (6%)
5	SO4	C	804	-	4,4,4	0.15	0	6,6,6	0.26	0
2	NAI	D	801	-	38,48,48	1.94	11 (28%)	48,73,73	2.00	10 (20%)
4	22Y	D	802	-	25,28,28	0.93	3 (12%)	32,39,39	1.11	2 (6%)
5	SO4	D	803	-	4,4,4	0.18	0	6,6,6	0.16	0

In the following table, the Chirals column lists the number of chiral outliers, the number of chiral centers analysed, the number of these observed in the model and the number defined in the chemical component dictionary. Similar counts are reported in the Torsion and Rings columns. '-' means no outliers of that kind were identified.

Mol	Type	Chain	Res	Link	Chirals	Torsions	Rings
2	NAI	A	801	-	-	0/25/72/72	0/5/5/5
3	EPE	A	802	-	-	0/9/19/19	0/1/1/1
4	22Y	A	803	-	-	0/12/16/16	0/3/3/3
5	SO4	A	804	-	-	0/0/0/0	0/0/0/0
2	NAI	B	801	-	-	0/25/72/72	0/5/5/5
3	EPE	B	802	-	-	0/9/19/19	0/1/1/1
6	LAC	B	803	-	-	0/0/4/4	0/0/0/0
2	NAI	C	801	-	-	0/25/72/72	0/5/5/5
3	EPE	C	802	-	-	0/9/19/19	0/1/1/1
4	22Y	C	803	-	-	0/12/16/16	0/3/3/3
5	SO4	C	804	-	-	0/0/0/0	0/0/0/0
2	NAI	D	801	-	-	0/25/72/72	0/5/5/5
4	22Y	D	802	-	-	0/12/16/16	0/3/3/3
5	SO4	D	803	-	-	0/0/0/0	0/0/0/0

All (50) bond length outliers are listed below:

Mol	Chain	Res	Type	Atoms	Z	Observed(Å)	Ideal(Å)
2	A	801	NAI	C2B-C3B	-4.64	1.40	1.53
2	D	801	NAI	C2B-C3B	-4.54	1.41	1.53
2	C	801	NAI	C2B-C3B	-4.38	1.41	1.53
2	B	801	NAI	C2B-C3B	-4.09	1.42	1.53
2	C	801	NAI	C4N-C5N	-3.97	1.40	1.49
2	D	801	NAI	C4N-C5N	-3.81	1.40	1.49
2	A	801	NAI	C4N-C5N	-3.80	1.40	1.49
2	B	801	NAI	C4N-C5N	-3.28	1.42	1.49
2	C	801	NAI	O2D-C2D	-3.13	1.35	1.43
2	D	801	NAI	O2D-C2D	-3.09	1.35	1.43
2	A	801	NAI	O2D-C2D	-2.95	1.35	1.43
2	B	801	NAI	O2D-C2D	-2.95	1.35	1.43
2	D	801	NAI	C5D-C4D	-2.59	1.43	1.51
2	A	801	NAI	C5D-C4D	-2.50	1.43	1.51
2	B	801	NAI	C2D-C3D	-2.45	1.46	1.53
2	C	801	NAI	C5D-C4D	-2.39	1.43	1.51
2	B	801	NAI	C5D-C4D	-2.37	1.43	1.51
4	A	803	22Y	C12-C11	-2.35	1.41	1.45
2	C	801	NAI	O4B-C4B	-2.23	1.39	1.45
4	C	803	22Y	C12-C11	-2.22	1.41	1.45
4	D	802	22Y	C12-C11	-2.16	1.41	1.45

Continued on next page...

Continued from previous page...

Mol	Chain	Res	Type	Atoms	Z	Observed(Å)	Ideal(Å)
2	D	801	NAI	C2D-C3D	-2.13	1.47	1.53
2	C	801	NAI	C5B-C4B	-2.06	1.45	1.51
2	B	801	NAI	O4B-C4B	-2.05	1.40	1.45
2	B	801	NAI	C5B-C4B	-2.02	1.45	1.51
2	A	801	NAI	C2D-C3D	-2.01	1.47	1.53
2	D	801	NAI	O4B-C4B	-2.01	1.40	1.45
2	D	801	NAI	C5B-C4B	-2.01	1.45	1.51
2	C	801	NAI	O4B-C1B	-2.00	1.38	1.41
4	D	802	22Y	C12-N27	2.05	1.39	1.34
4	C	803	22Y	C12-N27	2.12	1.39	1.34
4	A	803	22Y	C12-N27	2.37	1.40	1.34
2	B	801	NAI	C2N-C3N	2.40	1.40	1.34
2	C	801	NAI	C2N-C3N	2.44	1.40	1.34
2	D	801	NAI	C2N-C3N	2.47	1.40	1.34
4	D	802	22Y	C11-N10	2.86	1.39	1.35
4	C	803	22Y	C11-N10	2.99	1.39	1.35
4	A	803	22Y	C11-N10	3.09	1.39	1.35
2	D	801	NAI	C7N-N7N	3.49	1.43	1.33
2	A	801	NAI	C7N-N7N	3.52	1.43	1.33
2	C	801	NAI	C7N-N7N	3.55	1.43	1.33
2	B	801	NAI	C7N-N7N	3.56	1.43	1.33
2	B	801	NAI	C6A-N6A	3.59	1.46	1.34
2	D	801	NAI	C6A-N6A	3.63	1.46	1.34
2	A	801	NAI	C6A-N6A	3.67	1.46	1.34
2	C	801	NAI	C6A-N6A	3.70	1.46	1.34
2	D	801	NAI	C6N-C5N	4.08	1.41	1.33
2	C	801	NAI	C6N-C5N	4.23	1.41	1.33
2	A	801	NAI	C6N-C5N	4.30	1.41	1.33
2	B	801	NAI	C6N-C5N	4.42	1.41	1.33

All (58) bond angle outliers are listed below:

Mol	Chain	Res	Type	Atoms	Z	Observed(°)	Ideal(°)
2	B	801	NAI	N3A-C2A-N1A	-9.31	121.77	128.89
2	A	801	NAI	N3A-C2A-N1A	-9.04	121.97	128.89
2	C	801	NAI	N3A-C2A-N1A	-9.01	121.99	128.89
2	D	801	NAI	N3A-C2A-N1A	-8.33	122.52	128.89
2	A	801	NAI	C4B-O4B-C1B	-5.74	103.41	109.72
2	B	801	NAI	C4B-O4B-C1B	-5.72	103.43	109.72
2	C	801	NAI	C4B-O4B-C1B	-5.07	104.14	109.72
2	D	801	NAI	C4B-O4B-C1B	-4.79	104.45	109.72
2	D	801	NAI	PN-O3-PA	-3.82	121.99	132.73

Continued on next page...

Continued from previous page...

Mol	Chain	Res	Type	Atoms	Z	Observed(°)	Ideal(°)
2	C	801	NAI	PN-O3-PA	-3.57	122.72	132.73
2	B	801	NAI	PN-O3-PA	-3.35	123.33	132.73
2	A	801	NAI	C4A-C5A-N7A	-3.24	106.50	109.48
3	B	802	EPE	C9-N1-C6	-2.93	103.75	111.27
2	A	801	NAI	PN-O3-PA	-2.80	124.86	132.73
2	C	801	NAI	C4A-C5A-N7A	-2.79	106.91	109.48
2	B	801	NAI	C4A-C5A-N7A	-2.79	106.92	109.48
4	C	803	22Y	C14-C15-C17	-2.64	118.14	122.03
2	D	801	NAI	C4D-O4D-C1D	-2.55	103.90	109.52
2	D	801	NAI	C4A-C5A-N7A	-2.50	107.18	109.48
3	C	802	EPE	C5-C6-N1	-2.17	106.74	110.63
2	B	801	NAI	C4N-C5N-C6N	-2.15	119.04	122.58
4	C	803	22Y	C11-C12-N27	-2.12	120.24	123.53
4	D	802	22Y	C4-C2-N10	-2.04	108.51	112.65
4	D	802	22Y	C11-C12-N27	-2.03	120.39	123.53
4	A	803	22Y	C11-C12-N27	-2.01	120.42	123.53
2	D	801	NAI	O3-PA-O5B	2.01	108.28	102.94
2	D	801	NAI	O4B-C1B-N9A	2.05	112.38	108.10
2	C	801	NAI	C5N-C4N-C3N	2.11	118.34	112.52
3	B	802	EPE	C6-N1-C2	2.12	113.50	108.90
2	D	801	NAI	C5N-C4N-C3N	2.13	118.38	112.52
2	B	801	NAI	C5N-C4N-C3N	2.14	118.41	112.52
2	B	801	NAI	O3-PA-O5B	2.16	108.68	102.94
2	C	801	NAI	O3-PN-O5D	2.27	108.96	102.94
2	C	801	NAI	O4B-C1B-N9A	2.29	112.89	108.10
2	D	801	NAI	O5B-C5B-C4B	2.30	117.59	109.12
2	B	801	NAI	O5D-C5D-C4D	2.31	117.64	109.12
2	A	801	NAI	O5D-C5D-C4D	2.47	118.21	109.12
2	A	801	NAI	C5N-C4N-C3N	2.47	119.33	112.52
2	C	801	NAI	O5D-C5D-C4D	2.53	118.44	109.12
2	C	801	NAI	O5B-C5B-C4B	2.54	118.49	109.12
3	A	802	EPE	C7-N4-C5	2.71	118.22	111.27
2	B	801	NAI	O4D-C1D-N1N	2.73	113.82	108.07
3	C	802	EPE	C7-N4-C5	2.78	118.40	111.27
3	C	802	EPE	C7-N4-C3	2.93	118.79	111.27
3	A	802	EPE	C7-N4-C3	2.98	118.90	111.27
3	A	802	EPE	O1S-S-C10	3.12	109.56	106.91
2	B	801	NAI	O4B-C1B-N9A	3.18	114.75	108.10
3	B	802	EPE	C7-N4-C5	3.26	119.62	111.27
3	B	802	EPE	O2S-S-C10	3.56	109.94	106.91
2	A	801	NAI	O4B-C1B-N9A	3.68	115.81	108.10
3	B	802	EPE	C5-N4-C3	3.81	117.15	108.90

Continued on next page...

Continued from previous page...

Mol	Chain	Res	Type	Atoms	Z	Observed($^{\circ}$)	Ideal($^{\circ}$)
3	B	802	EPE	C7-N4-C3	3.89	121.25	111.27
2	C	801	NAI	O4D-C1D-N1N	4.30	117.16	108.07
2	A	801	NAI	O4D-C1D-N1N	4.35	117.25	108.07
3	C	802	EPE	O1S-S-C10	4.38	110.64	106.91
3	A	802	EPE	C5-N4-C3	4.53	118.71	108.90
2	D	801	NAI	O4D-C1D-N1N	4.74	118.08	108.07
3	C	802	EPE	C5-N4-C3	4.88	119.47	108.90

There are no chirality outliers.

There are no torsion outliers.

There are no ring outliers.

10 monomers are involved in 24 short contacts:

Mol	Chain	Res	Type	Clashes	Symm-Clashes
2	A	801	NAI	1	0
3	A	802	EPE	2	0
4	A	803	22Y	2	0
2	B	801	NAI	4	0
3	B	802	EPE	1	0
6	B	803	LAC	2	0
2	C	801	NAI	1	0
3	C	802	EPE	6	0
4	C	803	22Y	4	0
2	D	801	NAI	3	0

5.7 Other polymers [i](#)

There are no such residues in this entry.

5.8 Polymer linkage issues [i](#)

There are no chain breaks in this entry.

6 Fit of model and data

6.1 Protein, DNA and RNA chains

In the following table, the column labelled ‘#RSRZ> 2’ contains the number (and percentage) of RSRZ outliers, followed by percent RSRZ outliers for the chain as percentile scores relative to all X-ray entries and entries of similar resolution. The OWAB column contains the minimum, median, 95th percentile and maximum values of the occupancy-weighted average B-factor per residue. The column labelled ‘Q< 0.9’ lists the number of (and percentage) of residues with an average occupancy less than 0.9.

Mol	Chain	Analysed	<RSRZ>	#RSRZ>2	OWAB(Å ²)	Q<0.9
1	A	331/331 (100%)	-0.46	5 (1%) 76 79	29, 46, 81, 126	0
1	B	331/331 (100%)	-0.60	3 (0%) 85 87	28, 40, 65, 122	0
1	C	331/331 (100%)	-0.25	6 (1%) 71 74	32, 51, 85, 117	0
1	D	331/331 (100%)	-0.42	8 (2%) 62 66	30, 40, 74, 134	0
All	All	1324/1324 (100%)	-0.43	22 (1%) 73 76	28, 44, 80, 134	0

All (22) RSRZ outliers are listed below:

Mol	Chain	Res	Type	RSRZ
1	A	98	ARG	5.9
1	D	101	GLU	5.1
1	D	1	ALA	3.7
1	C	14	GLU	3.2
1	B	14	GLU	3.2
1	C	15	GLU	3.1
1	B	15	GLU	3.1
1	A	331	PHE	3.0
1	D	15	GLU	2.8
1	A	99	GLN	2.8
1	B	331	PHE	2.8
1	D	71	LEU	2.7
1	D	118[A]	PHE	2.7
1	D	98	ARG	2.4
1	D	102	GLY	2.3
1	C	16	GLN	2.3
1	A	105	ARG	2.3
1	A	101	GLU	2.2
1	C	238	TYR	2.2
1	D	70	PHE	2.1
1	C	118	PHE	2.1
1	C	98	ARG	2.1

6.2 Non-standard residues in protein, DNA, RNA chains [i](#)

There are no non-standard protein/DNA/RNA residues in this entry.

6.3 Carbohydrates [i](#)

There are no carbohydrates in this entry.

6.4 Ligands [i](#)

In the following table, the Atoms column lists the number of modelled atoms in the group and the number defined in the chemical component dictionary. LLDF column lists the quality of electron density of the group with respect to its neighbouring residues in protein, DNA or RNA chains. The B-factors column lists the minimum, median, 95th percentile and maximum values of B factors of atoms in the group. The column labelled 'Q< 0.9' lists the number of atoms with occupancy less than 0.9.

Mol	Type	Chain	Res	Atoms	RSCC	RSR	LLDF	B-factors(Å ²)	Q<0.9
3	EPE	A	802	15/15	0.92	0.16	6.55	82,93,98,98	0
5	SO4	A	804	5/5	0.90	0.21	5.92	44,47,57,58	5
5	SO4	C	804	5/5	0.91	0.20	4.66	35,41,51,52	5
6	LAC	B	803	6/6	0.95	0.12	4.19	30,36,50,51	0
3	EPE	C	802	15/15	0.88	0.16	2.68	93,96,118,118	0
3	EPE	B	802	15/15	0.94	0.16	2.66	81,118,125,126	0
5	SO4	D	803	5/5	0.97	0.16	1.78	29,36,44,45	5
4	22Y	A	803	26/26	0.80	0.25	0.95	30,54,63,65	27
2	NAI	A	801	44/44	0.96	0.09	0.17	41,55,61,66	0
2	NAI	C	801	44/44	0.95	0.10	0.06	42,59,71,77	0
4	22Y	C	803	26/26	0.89	0.13	0.00	47,58,69,74	27
4	22Y	D	802	26/26	0.94	0.11	-0.01	28,44,51,51	26
2	NAI	D	801	44/44	0.96	0.09	-0.21	39,50,63,67	0
2	NAI	B	801	44/44	0.97	0.07	-0.76	27,36,40,43	0

6.5 Other polymers [i](#)

There are no such residues in this entry.