



# wwPDB X-ray Structure Validation Summary Report ⓘ

Feb 16, 2017 – 05:59 PM EST

PDB ID : 5M7E  
Title : Tubulin-BKM120 complex  
Authors : Bohnacker, T.; Protá, A.E.; Steinmetz, M.O.; Wymann, M.P.  
Deposited on : 2016-10-27  
Resolution : 2.05 Å(reported)

This is a wwPDB X-ray Structure Validation Summary Report for a publicly released PDB entry.

We welcome your comments at [validation@mail.wwpdb.org](mailto:validation@mail.wwpdb.org)

A user guide is available at

<http://wwpdb.org/validation/2016/XrayValidationReportHelp>

with specific help available everywhere you see the ⓘ symbol.

---

The following versions of software and data (see [references ⓘ](#)) were used in the production of this report:

MolProbity : 4.02b-467  
Mogul : 1.7.1 (RC1), CSD as537be (2016)  
Xtriage (Phenix) : 1.9-1692  
EDS : rb-20028442  
Percentile statistics : 20151230.v01 (using entries in the PDB archive December 30th 2015)  
Refmac : 5.8.0135  
CCP4 : 6.5.0  
Ideal geometry (proteins) : Engh & Huber (2001)  
Ideal geometry (DNA, RNA) : Parkinson et al. (1996)  
Validation Pipeline (wwPDB-VP) : rb-20028442

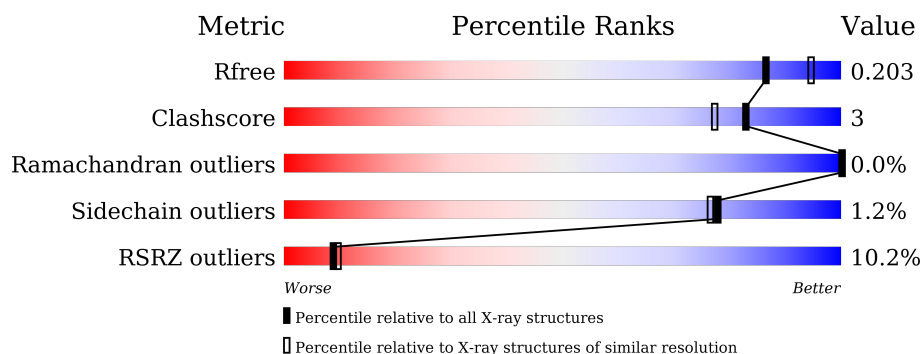
# 1 Overall quality at a glance

The following experimental techniques were used to determine the structure:

*X-RAY DIFFRACTION*

The reported resolution of this entry is 2.05 Å.

Percentile scores (ranging between 0-100) for global validation metrics of the entry are shown in the following graphic. The table shows the number of entries on which the scores are based.



Metric	Whole archive (#Entries)	Similar resolution (#Entries, resolution range(Å))
$R_{free}$	91344	1192 (2.04-2.04)
Clashscore	102246	1269 (2.04-2.04)
Ramachandran outliers	100387	1258 (2.04-2.04)
Sidechain outliers	100360	1258 (2.04-2.04)
RSRZ outliers	91569	1194 (2.04-2.04)

The table below summarises the geometric issues observed across the polymeric chains and their fit to the electron density. The red, orange, yellow and green segments on the lower bar indicate the fraction of residues that contain outliers for  $\geq 3$ , 2, 1 and 0 types of geometric quality criteria. A grey segment represents the fraction of residues that are not modelled. The numeric value for each fraction is indicated below the corresponding segment, with a dot representing fractions  $\leq 5\%$ . The upper red bar (where present) indicates the fraction of residues that have poor fit to the electron density. The numeric value is given above the bar.

Mol	Chain	Length	Quality of chain
1	A	451	<div> <div>5%</div> <div>89%</div> <div>7%</div> <div>.</div> </div>
1	C	451	<div> <div>2%</div> <div>89%</div> <div>8%</div> <div>.</div> </div>
2	B	445	<div> <div>5%</div> <div>88%</div> <div>7%</div> <div>5%</div> </div>
2	D	445	<div> <div>11%</div> <div>86%</div> <div>9%</div> <div>.</div> </div>
3	E	143	<div> <div>10%</div> <div>78%</div> <div>8%</div> <div>14%</div> </div>
4	F	384	<div> <div>28%</div> <div>76%</div> <div>7%</div> <div>.</div> <div>16%</div> </div>

The following table lists non-polymeric compounds, carbohydrate monomers and non-standard residues in protein, DNA, RNA chains that are outliers for geometric or electron-density-fit criteria:

Mol	Type	Chain	Res	Chirality	Geometry	Clashes	Electron density
8	GOL	A	504	-	-	-	X
8	GOL	F	403	-	-	-	X
8	GOL	F	404	-	-	-	X

## 2 Entry composition

There are 13 unique types of molecules in this entry. The entry contains 18092 atoms, of which 0 are hydrogens and 0 are deuteriums.

In the tables below, the ZeroOcc column contains the number of atoms modelled with zero occupancy, the AltConf column contains the number of residues with at least one atom in alternate conformation and the Trace column contains the number of residues modelled with at most 2 atoms.

- Molecule 1 is a protein called Tubulin alpha-1B chain.

Mol	Chain	Residues	Atoms					ZeroOcc	AltConf	Trace
1	A	436	Total	C	N	O	S	0	1	0
			3412	2160	580	649	23			
1	C	440	Total	C	N	O	S	0	4	0
			3449	2183	584	657	25			

- Molecule 2 is a protein called Tubulin beta-2B chain.

Mol	Chain	Residues	Atoms					ZeroOcc	AltConf	Trace
2	B	423	Total	C	N	O	S	0	1	0
			3339	2099	571	643	26			
2	D	427	Total	C	N	O	S	0	0	0
			3349	2101	572	650	26			

- Molecule 3 is a protein called Stathmin-4.

Mol	Chain	Residues	Atoms					ZeroOcc	AltConf	Trace
3	E	123	Total	C	N	O	S	0	1	0
			1021	630	185	201	5			

There are 2 discrepancies between the modelled and reference sequences:

Chain	Residue	Modelled	Actual	Comment	Reference
E	3	MET	ILE	cloning artifact	UNP P63043
E	4	ALA	SER	cloning artifact	UNP P63043

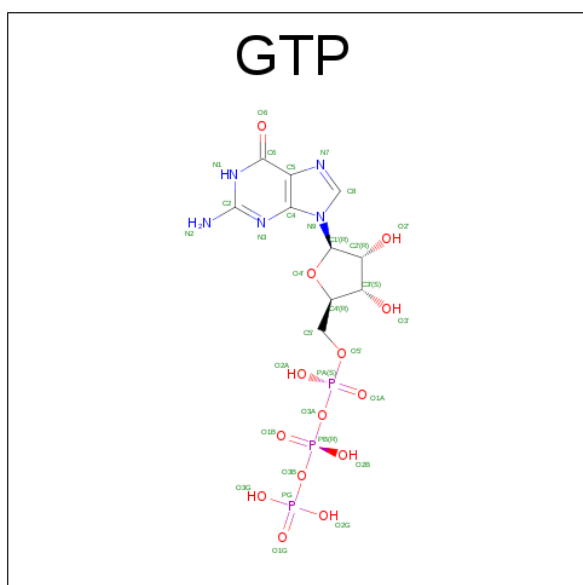
- Molecule 4 is a protein called Uncharacterized protein.

Mol	Chain	Residues	Atoms					ZeroOcc	AltConf	Trace
4	F	322	Total	C	N	O	S	0	0	0
			2623	1693	440	476	14			

There are 6 discrepancies between the modelled and reference sequences:

Chain	Residue	Modelled	Actual	Comment	Reference
F	379	HIS	-	expression tag	UNP E1BQ43
F	380	HIS	-	expression tag	UNP E1BQ43
F	381	HIS	-	expression tag	UNP E1BQ43
F	382	HIS	-	expression tag	UNP E1BQ43
F	383	HIS	-	expression tag	UNP E1BQ43
F	384	HIS	-	expression tag	UNP E1BQ43

- Molecule 5 is GUANOSINE-5'-TRIPHOSPHATE (three-letter code: GTP) (formula:  $C_{10}H_{16}N_5O_{14}P_3$ ).



Mol	Chain	Residues	Atoms					ZeroOcc	AltConf
5	A	1	Total	C	N	O	P	0	0
			32	10	5	14	3		
5	C	1	Total	C	N	O	P	0	0
			32	10	5	14	3		

- Molecule 6 is MAGNESIUM ION (three-letter code: MG) (formula: Mg).

Mol	Chain	Residues	Atoms		ZeroOcc	AltConf
6	B	1	Total	Mg	0	0
			1	1		
6	A	1	Total	Mg	0	0
			1	1		
6	D	1	Total	Mg	0	0
			1	1		
6	C	1	Total	Mg	0	0
			1	1		

*Continued on next page...*

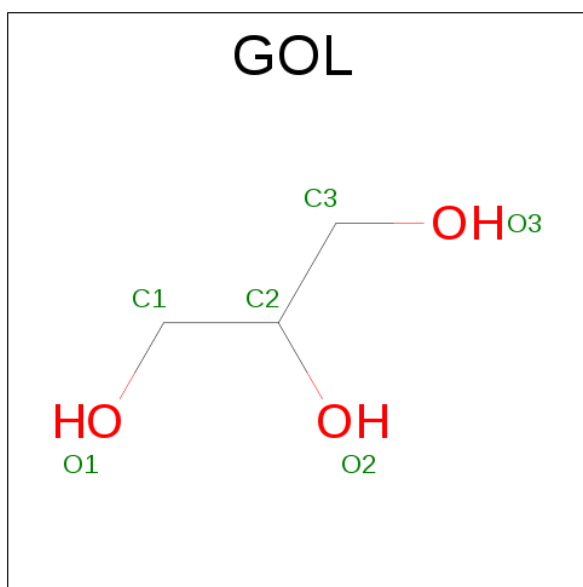
*Continued from previous page...*

Mol	Chain	Residues	Atoms		ZeroOcc	AltConf
6	F	1	Total	Mg	0	0
			1	1		

- Molecule 7 is CALCIUM ION (three-letter code: CA) (formula: Ca).

Mol	Chain	Residues	Atoms		ZeroOcc	AltConf
7	B	1	Total	Ca	0	0
			1	1		
7	A	1	Total	Ca	0	0
			1	1		
7	C	1	Total	Ca	0	0
			1	1		

- Molecule 8 is GLYCEROL (three-letter code: GOL) (formula: C<sub>3</sub>H<sub>8</sub>O<sub>3</sub>).



Mol	Chain	Residues	Atoms			ZeroOcc	AltConf
8	A	1	Total	C	O	0	0
			6	3	3		
8	F	1	Total	C	O	0	0
			6	3	3		
8	F	1	Total	C	O	0	0
			6	3	3		

- Molecule 9 is GUANOSINE-5'-DIPHOSPHATE (three-letter code: GDP) (formula: C<sub>10</sub>H<sub>15</sub>N<sub>5</sub>O<sub>11</sub>P<sub>2</sub>).



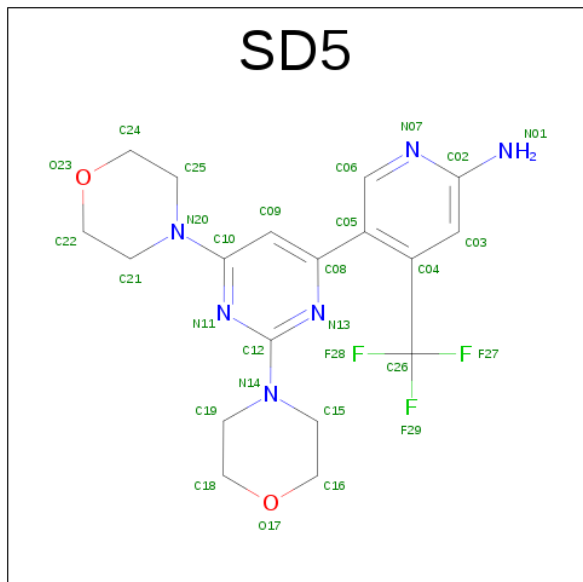
Mol	Chain	Residues	Atoms					ZeroOcc	AltConf
9	B	1	Total 28	C 10	N 5	O 11	P 2	0	0
9	D	1	Total 28	C 10	N 5	O 11	P 2	0	0

- Molecule 10 is 2-(N-MORPHOLINO)-ETHANESULFONIC ACID (three-letter code: MES) (formula:  $\text{C}_6\text{H}_{13}\text{NO}_4\text{S}$ ).



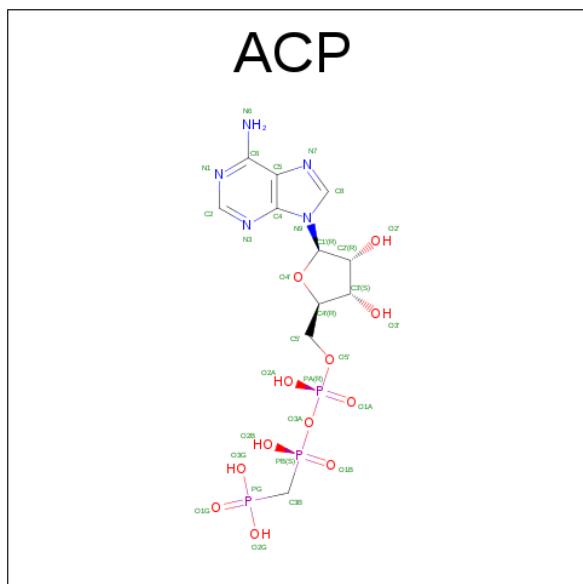
Mol	Chain	Residues	Atoms					ZeroOcc	AltConf
10	B	1	Total	C	N	O	S	0	0
			12	6	1	4	1		

- Molecule 11 is 5-[2,6-di(morpholin-4-yl)pyrimidin-4-yl]-4-(trifluoromethyl)pyridin-2-amine (three-letter code: SD5) (formula: C<sub>18</sub>H<sub>21</sub>F<sub>3</sub>N<sub>6</sub>O<sub>2</sub>).



Mol	Chain	Residues	Atoms					ZeroOcc	AltConf
11	B	1	Total	C	F	N	O	0	0
			29	18	3	6	2		

- Molecule 12 is PHOSPHOMETHYLPHOSPHONIC ACID ADENYLATE ESTER (three-letter code: ACP) (formula: C<sub>11</sub>H<sub>18</sub>N<sub>5</sub>O<sub>12</sub>P<sub>3</sub>).



Mol	Chain	Residues	Atoms					ZeroOcc	AltConf
12	F	1	Total	C	N	O	P	0	0
			31	11	5	12	3		

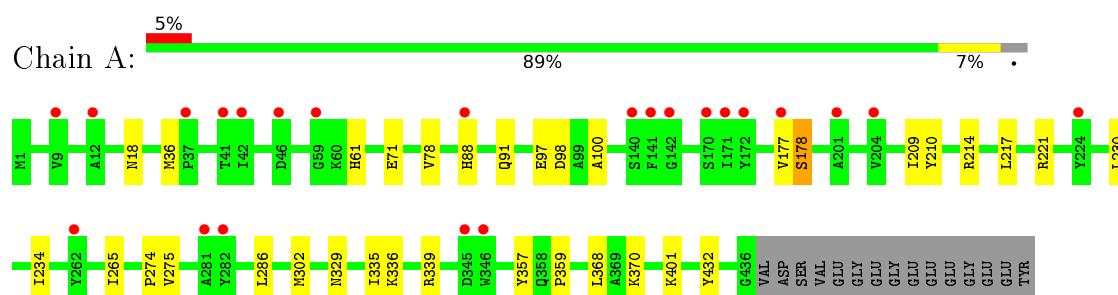
- Molecule 13 is water.

Mol	Chain	Residues	Atoms		ZeroOcc	AltConf
13	A	137	Total 137	O 137	0	0
13	B	130	Total 130	O 130	0	0
13	C	232	Total 232	O 232	0	0
13	D	100	Total 100	O 100	0	0
13	E	25	Total 25	O 25	0	0
13	F	57	Total 57	O 57	0	0

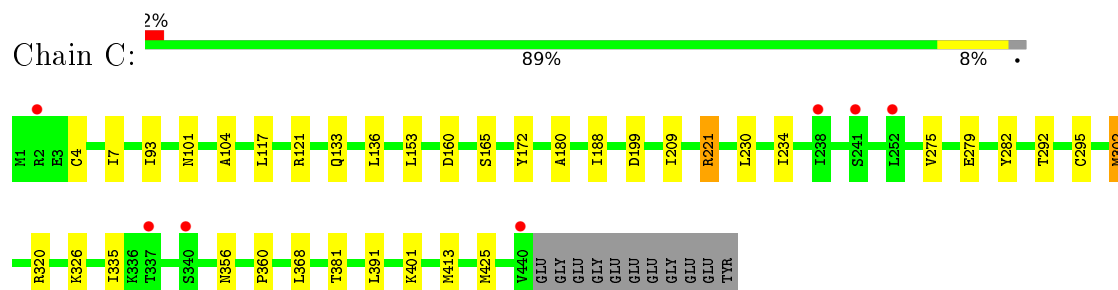
### 3 Residue-property plots [i](#)

These plots are drawn for all protein, RNA and DNA chains in the entry. The first graphic for a chain summarises the proportions of errors displayed in the second graphic. The second graphic shows the sequence view annotated by issues in geometry and electron density. Residues are color-coded according to the number of geometric quality criteria for which they contain at least one outlier: green = 0, yellow = 1, orange = 2 and red = 3 or more. A red dot above a residue indicates a poor fit to the electron density ( $RSRZ > 2$ ). Stretches of 2 or more consecutive residues without any outlier are shown as a green connector. Residues present in the sample, but not in the model, are shown in grey.

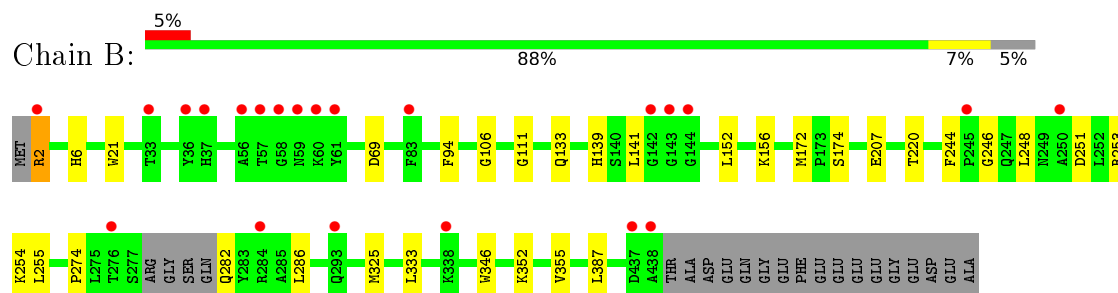
- Molecule 1: Tubulin alpha-1B chain



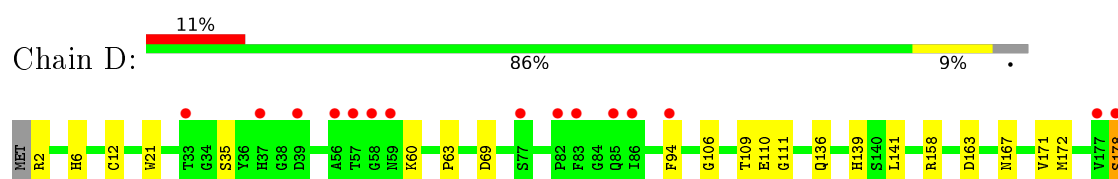
- Molecule 1: Tubulin alpha-1B chain



- Molecule 2: Tubulin beta-2B chain



- Molecule 2: Tubulin beta-2B chain





## 4 Data and refinement statistics

Property	Value	Source
Space group	P 21 21 21	Depositor
Cell constants a, b, c, $\alpha$ , $\beta$ , $\gamma$	104.59Å 157.99Å 179.73Å 90.00° 90.00° 90.00°	Depositor
Resolution (Å)	44.93 – 2.05 49.38 – 2.05	Depositor EDS
% Data completeness (in resolution range)	99.8 (44.93-2.05) 99.8 (49.38-2.05)	Depositor EDS
$R_{merge}$	0.11	Depositor
$R_{sym}$	(Not available)	Depositor
$\langle I/\sigma(I) \rangle$ <sup>1</sup>	1.24 (at 2.05Å)	Xtriage
Refinement program	PHENIX (1.10.1 _2155: ???)	Depositor
R, $R_{free}$	0.173 , 0.203 0.172 , 0.203	Depositor DCC
$R_{free}$ test set	9353 reflections (5.00%)	DCC
Wilson B-factor (Å <sup>2</sup> )	41.3	Xtriage
Anisotropy	0.121	Xtriage
Bulk solvent $k_{sol}$ (e/Å <sup>3</sup> ), $B_{sol}$ (Å <sup>2</sup> )	0.35 , 52.2	EDS
L-test for twinning <sup>2</sup>	$\langle  L  \rangle = 0.48$ , $\langle L^2 \rangle = 0.31$	Xtriage
Estimated twinning fraction	No twinning to report.	Xtriage
$F_o, F_c$ correlation	0.97	EDS
Total number of atoms	18092	wwPDB-VP
Average B, all atoms (Å <sup>2</sup> )	57.0	wwPDB-VP

Xtriage's analysis on translational NCS is as follows: *The largest off-origin peak in the Patterson function is 2.36% of the height of the origin peak. No significant pseudotranslation is detected.*

<sup>1</sup>Intensities estimated from amplitudes.

<sup>2</sup>Theoretical values of  $\langle |L| \rangle$ ,  $\langle L^2 \rangle$  for acentric reflections are 0.5, 0.333 respectively for untwinned datasets, and 0.375, 0.2 for perfectly twinned datasets.

## 5 Model quality

### 5.1 Standard geometry

Bond lengths and bond angles in the following residue types are not validated in this section: GDP, SD5, MG, GOL, CA, GTP, ACP, MES

The Z score for a bond length (or angle) is the number of standard deviations the observed value is removed from the expected value. A bond length (or angle) with  $|Z| > 5$  is considered an outlier worth inspection. RMSZ is the root-mean-square of all Z scores of the bond lengths (or angles).

Mol	Chain	Bond lengths		Bond angles	
		RMSZ	$\# Z  > 5$	RMSZ	$\# Z  > 5$
1	A	0.39	0/3493	0.53	0/4741
1	C	0.48	1/3539 (0.0%)	0.58	0/4805
2	B	0.41	0/3416	0.54	0/4626
2	D	0.35	0/3422	0.52	0/4635
3	E	0.39	0/1033	0.45	0/1371
4	F	0.34	0/2680	0.48	0/3619
All	All	0.40	1/17583 (0.0%)	0.53	0/23797

Chiral center outliers are detected by calculating the chiral volume of a chiral center and verifying if the center is modelled as a planar moiety or with the opposite hand. A planarity outlier is detected by checking planarity of atoms in a peptide group, atoms in a mainchain group or atoms of a sidechain that are expected to be planar.

Mol	Chain	#Chirality outliers	#Planarity outliers
2	D	0	1

All (1) bond length outliers are listed below:

Mol	Chain	Res	Type	Atoms	Z	Observed(Å)	Ideal(Å)
1	C	295	CYS	CB-SG	-6.45	1.71	1.82

There are no bond angle outliers.

There are no chirality outliers.

All (1) planarity outliers are listed below:

Mol	Chain	Res	Type	Group
2	D	178	SER	Peptide

## 5.2 Too-close contacts ⓘ

In the following table, the Non-H and H(model) columns list the number of non-hydrogen atoms and hydrogen atoms in the chain respectively. The H(added) column lists the number of hydrogen atoms added and optimized by MolProbity. The Clashes column lists the number of clashes within the asymmetric unit, whereas Symm-Clashes lists symmetry related clashes.

Mol	Chain	Non-H	H(model)	H(added)	Clashes	Symm-Clashes
1	A	3412	0	3327	22	0
1	C	3449	0	3368	23	0
2	B	3339	0	3221	22	0
2	D	3349	0	3223	24	0
3	E	1021	0	1036	7	0
4	F	2623	0	2605	16	0
5	A	32	0	12	0	0
5	C	32	0	12	0	0
6	A	1	0	0	0	0
6	B	1	0	0	0	0
6	C	1	0	0	0	0
6	D	1	0	0	0	0
6	F	1	0	0	0	0
7	A	1	0	0	0	0
7	B	1	0	0	0	0
7	C	1	0	0	0	0
8	A	6	0	8	0	0
8	F	12	0	16	0	0
9	B	28	0	12	0	0
9	D	28	0	12	1	0
10	B	12	0	12	2	0
11	B	29	0	21	1	0
12	F	31	0	14	5	0
13	A	137	0	0	0	0
13	B	130	0	0	1	1
13	C	232	0	0	4	1
13	D	100	0	0	2	0
13	E	25	0	0	0	0
13	F	57	0	0	1	0
All	All	18092	0	16899	105	1

The all-atom clashscore is defined as the number of clashes found per 1000 atoms (including hydrogen atoms). The all-atom clashscore for this structure is 3.

The worst 5 of 105 close contacts within the same asymmetric unit are listed below, sorted by their clash magnitude.

Atom-1	Atom-2	Interatomic distance (Å)	Clash overlap (Å)
4:F:146:VAL:O	4:F:184:LYS:NZ	2.15	0.80
1:A:221:ARG:HD3	2:B:325:MET:HG3	1.66	0.76
1:C:279:GLU:O	13:C:601:HOH:O	2.09	0.69
1:C:4[B]:CYS:SG	1:C:136:LEU:HG	2.38	0.64
2:D:269:MET:HG3	2:D:303:ALA:HB3	1.79	0.63

All (1) symmetry-related close contacts are listed below. The label for Atom-2 includes the symmetry operator and encoded unit-cell translations to be applied.

Atom-1	Atom-2	Interatomic distance (Å)	Clash overlap (Å)
13:B:642:HOH:O	13:C:601:HOH:O[4_555]	1.97	0.23

## 5.3 Torsion angles [i](#)

### 5.3.1 Protein backbone [i](#)

In the following table, the Percentiles column shows the percent Ramachandran outliers of the chain as a percentile score with respect to all X-ray entries followed by that with respect to entries of similar resolution.

The Analysed column shows the number of residues for which the backbone conformation was analysed, and the total number of residues.

Mol	Chain	Analysed	Favoured	Allowed	Outliers	Percentiles	
1	A	435/451 (96%)	429 (99%)	5 (1%)	1 (0%)	52	43
1	C	442/451 (98%)	433 (98%)	9 (2%)	0	100	100
2	B	420/445 (94%)	415 (99%)	5 (1%)	0	100	100
2	D	423/445 (95%)	418 (99%)	5 (1%)	0	100	100
3	E	120/143 (84%)	120 (100%)	0	0	100	100
4	F	306/384 (80%)	302 (99%)	4 (1%)	0	100	100
All	All	2146/2319 (92%)	2117 (99%)	28 (1%)	1 (0%)	100	100

All (1) Ramachandran outliers are listed below:

Mol	Chain	Res	Type
1	A	178	SER

### 5.3.2 Protein sidechains [i](#)

In the following table, the Percentiles column shows the percent sidechain outliers of the chain as a percentile score with respect to all X-ray entries followed by that with respect to entries of similar resolution.

The Analysed column shows the number of residues for which the sidechain conformation was analysed, and the total number of residues.

Mol	Chain	Analysed	Rotameric	Outliers	Percentiles	
1	A	368/379 (97%)	367 (100%)	1 (0%)	94	95
1	C	375/379 (99%)	372 (99%)	3 (1%)	86	86
2	B	367/383 (96%)	363 (99%)	4 (1%)	80	79
2	D	368/383 (96%)	364 (99%)	4 (1%)	80	79
3	E	111/127 (87%)	109 (98%)	2 (2%)	66	62
4	F	289/342 (84%)	280 (97%)	9 (3%)	47	39
All	All	1878/1993 (94%)	1855 (99%)	23 (1%)	78	76

5 of 23 residues with a non-rotameric sidechain are listed below:

Mol	Chain	Res	Type
2	D	158	ARG
3	E	6	MET
4	F	320	MET
2	D	384	ILE
3	E	51	GLN

Some sidechains can be flipped to improve hydrogen bonding and reduce clashes. All (1) such sidechains are listed below:

Mol	Chain	Res	Type
2	D	334	ASN

### 5.3.3 RNA [i](#)

There are no RNA molecules in this entry.

## 5.4 Non-standard residues in protein, DNA, RNA chains [i](#)

There are no non-standard protein/DNA/RNA residues in this entry.

## 5.5 Carbohydrates [i](#)

There are no carbohydrates in this entry.

## 5.6 Ligand geometry [i](#)

Of 18 ligands modelled in this entry, 8 are monoatomic - leaving 10 for Mogul analysis.

In the following table, the Counts columns list the number of bonds (or angles) for which Mogul statistics could be retrieved, the number of bonds (or angles) that are observed in the model and the number of bonds (or angles) that are defined in the chemical component dictionary. The Link column lists molecule types, if any, to which the group is linked. The Z score for a bond length (or angle) is the number of standard deviations the observed value is removed from the expected value. A bond length (or angle) with  $|Z| > 2$  is considered an outlier worth inspection. RMSZ is the root-mean-square of all Z scores of the bond lengths (or angles).

Mol	Type	Chain	Res	Link	Bond lengths			Bond angles		
					Counts	RMSZ	$\# Z  > 2$	Counts	RMSZ	$\# Z  > 2$
5	GTP	A	501	6	26,34,34	0.94	2 (7%)	29,54,54	1.87	6 (20%)
8	GOL	A	504	-	5,5,5	0.30	0	5,5,5	0.39	0
9	GDP	B	501	6	24,30,30	1.12	3 (12%)	26,47,47	2.00	6 (23%)
10	MES	B	504	-	12,12,12	1.95	1 (8%)	15,16,16	2.61	3 (20%)
11	SD5	B	505	-	32,32,32	1.38	4 (12%)	43,46,46	1.62	9 (20%)
5	GTP	C	501	6	26,34,34	0.94	1 (3%)	29,54,54	1.97	4 (13%)
9	GDP	D	501	6	24,30,30	1.03	2 (8%)	26,47,47	1.92	5 (19%)
12	ACP	F	402	6	29,33,33	1.69	7 (24%)	29,52,52	1.53	2 (6%)
8	GOL	F	403	-	5,5,5	0.33	0	5,5,5	0.30	0
8	GOL	F	404	-	5,5,5	0.34	0	5,5,5	0.17	0

In the following table, the Chirals column lists the number of chiral outliers, the number of chiral centers analysed, the number of these observed in the model and the number defined in the chemical component dictionary. Similar counts are reported in the Torsion and Rings columns. '-' means no outliers of that kind were identified.

Mol	Type	Chain	Res	Link	Chirals	Torsions	Rings
5	GTP	A	501	6	-	0/18/38/38	0/3/3/3
8	GOL	A	504	-	-	0/4/4/4	0/0/0/0
9	GDP	B	501	6	-	0/12/32/32	0/3/3/3
10	MES	B	504	-	-	0/6/14/14	0/1/1/1
11	SD5	B	505	-	-	0/18/34/34	0/4/4/4
5	GTP	C	501	6	-	0/18/38/38	0/3/3/3
9	GDP	D	501	6	-	0/12/32/32	0/3/3/3
12	ACP	F	402	6	-	0/15/38/38	0/3/3/3

*Continued on next page...*

*Continued from previous page...*

Mol	Type	Chain	Res	Link	Chirals	Torsions	Rings
8	GOL	F	403	-	-	0/4/4/4	0/0/0/0
8	GOL	F	404	-	-	0/4/4/4	0/0/0/0

The worst 5 of 20 bond length outliers are listed below:

Mol	Chain	Res	Type	Atoms	Z	Observed(Å)	Ideal(Å)
10	B	504	MES	C8-S	-6.44	1.67	1.77
11	B	505	SD5	C26-C04	-4.30	1.41	1.50
11	B	505	SD5	F29-C26	-3.51	1.20	1.32
11	B	505	SD5	C05-C08	-2.68	1.39	1.48
12	F	402	ACP	PG-O2G	-2.68	1.48	1.54

The worst 5 of 35 bond angle outliers are listed below:

Mol	Chain	Res	Type	Atoms	Z	Observed(°)	Ideal(°)
12	F	402	ACP	N3-C2-N1	-6.32	123.91	128.87
5	C	501	GTP	N3-C2-N1	-5.94	119.48	127.56
5	A	501	GTP	N3-C2-N1	-5.23	120.44	127.56
9	B	501	GDP	C6-C5-C4	-4.38	115.85	120.86
9	D	501	GDP	C5-C6-N1	-3.96	118.35	123.52

There are no chirality outliers.

There are no torsion outliers.

There are no ring outliers.

4 monomers are involved in 9 short contacts:

Mol	Chain	Res	Type	Clashes	Symm-Clashes
10	B	504	MES	2	0
11	B	505	SD5	1	0
9	D	501	GDP	1	0
12	F	402	ACP	5	0

## 5.7 Other polymers ⓘ

There are no such residues in this entry.

## 5.8 Polymer linkage issues ⓘ

There are no chain breaks in this entry.

## 6 Fit of model and data ⓘ

### 6.1 Protein, DNA and RNA chains ⓘ

In the following table, the column labelled ‘#RSRZ> 2’ contains the number (and percentage) of RSRZ outliers, followed by percent RSRZ outliers for the chain as percentile scores relative to all X-ray entries and entries of similar resolution. The OWAB column contains the minimum, median, 95<sup>th</sup> percentile and maximum values of the occupancy-weighted average B-factor per residue. The column labelled ‘Q< 0.9’ lists the number of (and percentage) of residues with an average occupancy less than 0.9.

Mol	Chain	Analysed	<RSRZ>	#RSRZ>2	OWAB(Å <sup>2</sup> )	Q<0.9
1	A	436/451 (96%)	0.43	23 (5%) 30 34	32, 53, 85, 97	0
1	C	440/451 (97%)	0.17	7 (1%) 74 79	28, 41, 67, 90	0
2	B	423/445 (95%)	0.34	22 (5%) 31 36	30, 50, 85, 115	2 (0%)
2	D	427/445 (95%)	0.64	48 (11%) 7 7	33, 58, 89, 110	4 (0%)
3	E	123/143 (86%)	0.57	15 (12%) 5 6	37, 63, 103, 116	0
4	F	322/384 (83%)	1.35	107 (33%) 0 0	39, 72, 115, 138	0
All	All	2171/2319 (93%)	0.54	222 (10%) 9 10	28, 54, 93, 138	6 (0%)

The worst 5 of 222 RSRZ outliers are listed below:

Mol	Chain	Res	Type	RSRZ
4	F	132	LEU	9.4
4	F	182	ILE	7.7
4	F	161	LEU	7.0
4	F	372	THR	6.8
4	F	179	VAL	6.6

### 6.2 Non-standard residues in protein, DNA, RNA chains ⓘ

There are no non-standard protein/DNA/RNA residues in this entry.

### 6.3 Carbohydrates ⓘ

There are no carbohydrates in this entry.

## 6.4 Ligands ⓘ

In the following table, the Atoms column lists the number of modelled atoms in the group and the number defined in the chemical component dictionary. LLDF column lists the quality of electron density of the group with respect to its neighbouring residues in protein, DNA or RNA chains. The B-factors column lists the minimum, median, 95<sup>th</sup> percentile and maximum values of B factors of atoms in the group. The column labelled 'Q< 0.9' lists the number of atoms with occupancy less than 0.9.

Mol	Type	Chain	Res	Atoms	RSCC	RSR	LLDF	B-factors(Å <sup>2</sup> )	Q<0.9
8	GOL	F	404	6/6	0.82	0.29	4.60	110,116,117,118	0
8	GOL	A	504	6/6	0.87	0.16	3.20	68,78,84,87	0
8	GOL	F	403	6/6	0.80	0.23	2.81	105,109,111,113	0
6	MG	C	502	1/1	0.99	0.18	0.58	36,36,36,36	0
9	GDP	B	501	28/28	0.99	0.17	0.13	27,34,37,41	0
5	GTP	C	501	32/32	0.99	0.15	-0.01	24,30,34,35	0
6	MG	A	502	1/1	0.96	0.17	-0.04	36,36,36,36	0
10	MES	B	504	12/12	0.94	0.12	-0.04	50,58,77,82	0
5	GTP	A	501	32/32	0.98	0.19	-0.08	30,34,38,41	0
9	GDP	D	501	28/28	0.97	0.11	-0.43	40,52,59,61	0
12	ACP	F	402	31/31	0.86	0.19	-0.50	121,133,175,180	0
11	SD5	B	505	29/29	0.93	0.14	-0.58	39,54,72,77	0
7	CA	A	503	1/1	0.95	0.06	-2.64	73,73,73,73	0
7	CA	C	503	1/1	0.98	0.03	-4.26	53,53,53,53	0
6	MG	B	502	1/1	0.98	0.24	-	31,31,31,31	0
6	MG	D	502	1/1	0.90	0.07	-	50,50,50,50	0
7	CA	B	503	1/1	0.88	0.21	-	114,114,114,114	0
6	MG	F	401	1/1	0.56	0.31	-	118,118,118,118	0

## 6.5 Other polymers ⓘ

There are no such residues in this entry.